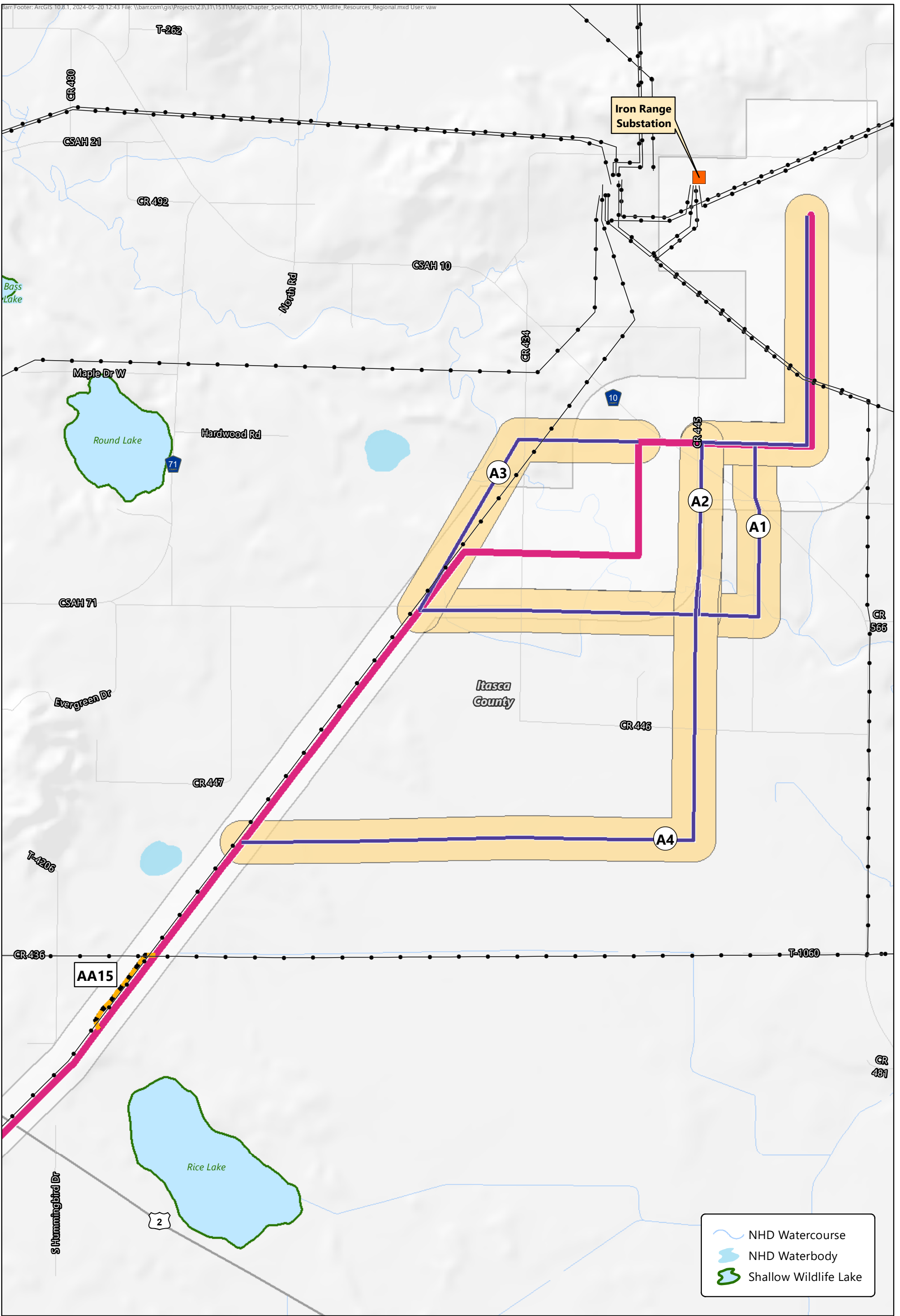

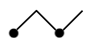





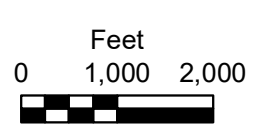


Map Book 5H
Wildlife Resources

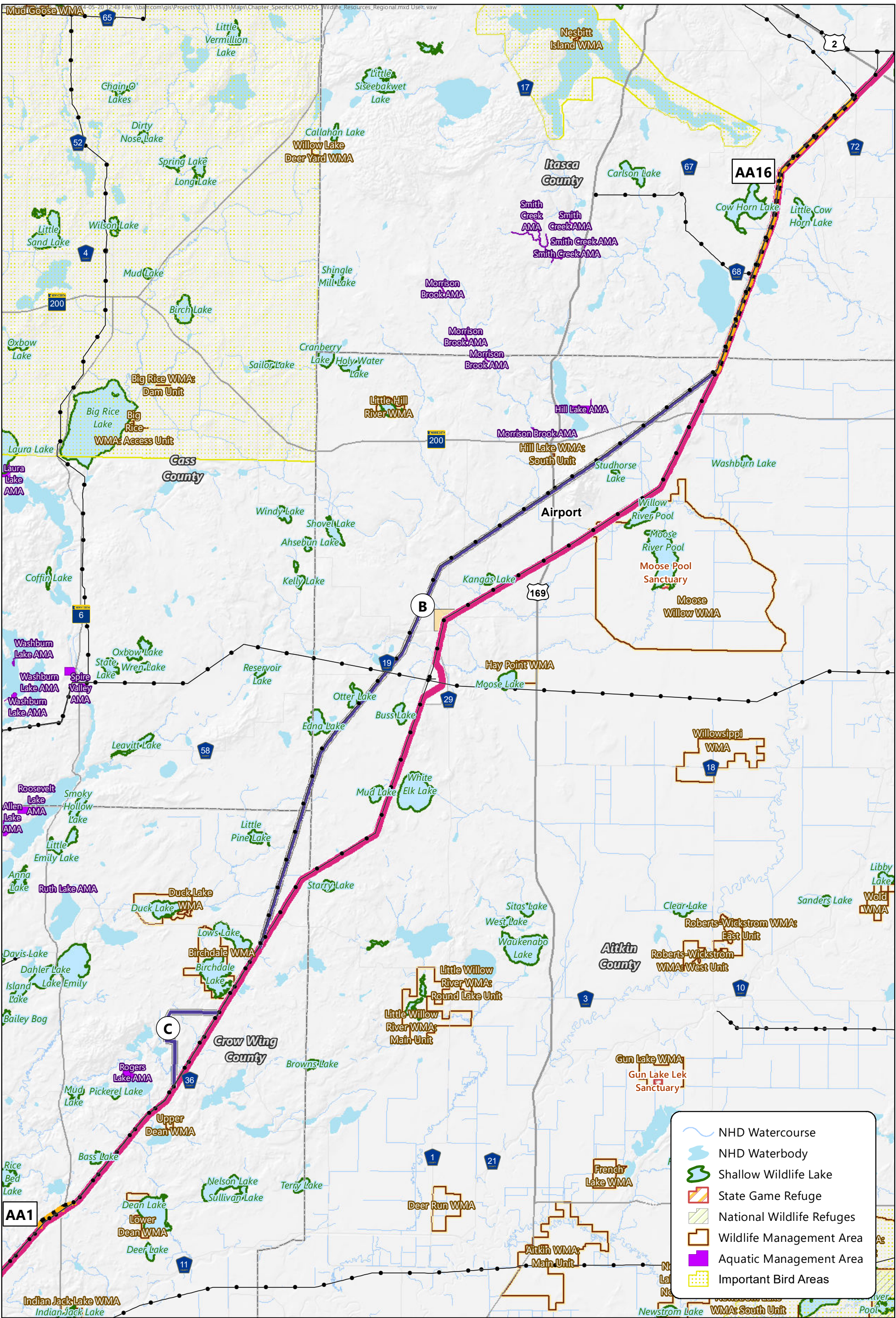


-  Applicants' Proposed Route
-  Existing Transmission Line
-  Route Width
-  Iron Range Substation
-  Route Alternative
-  Alignment Alternative
-  Route Alternative Width



Map 5H-1

WILDLIFE RESOURCES
 Iron Range Substation Region
 Northland Reliability Project

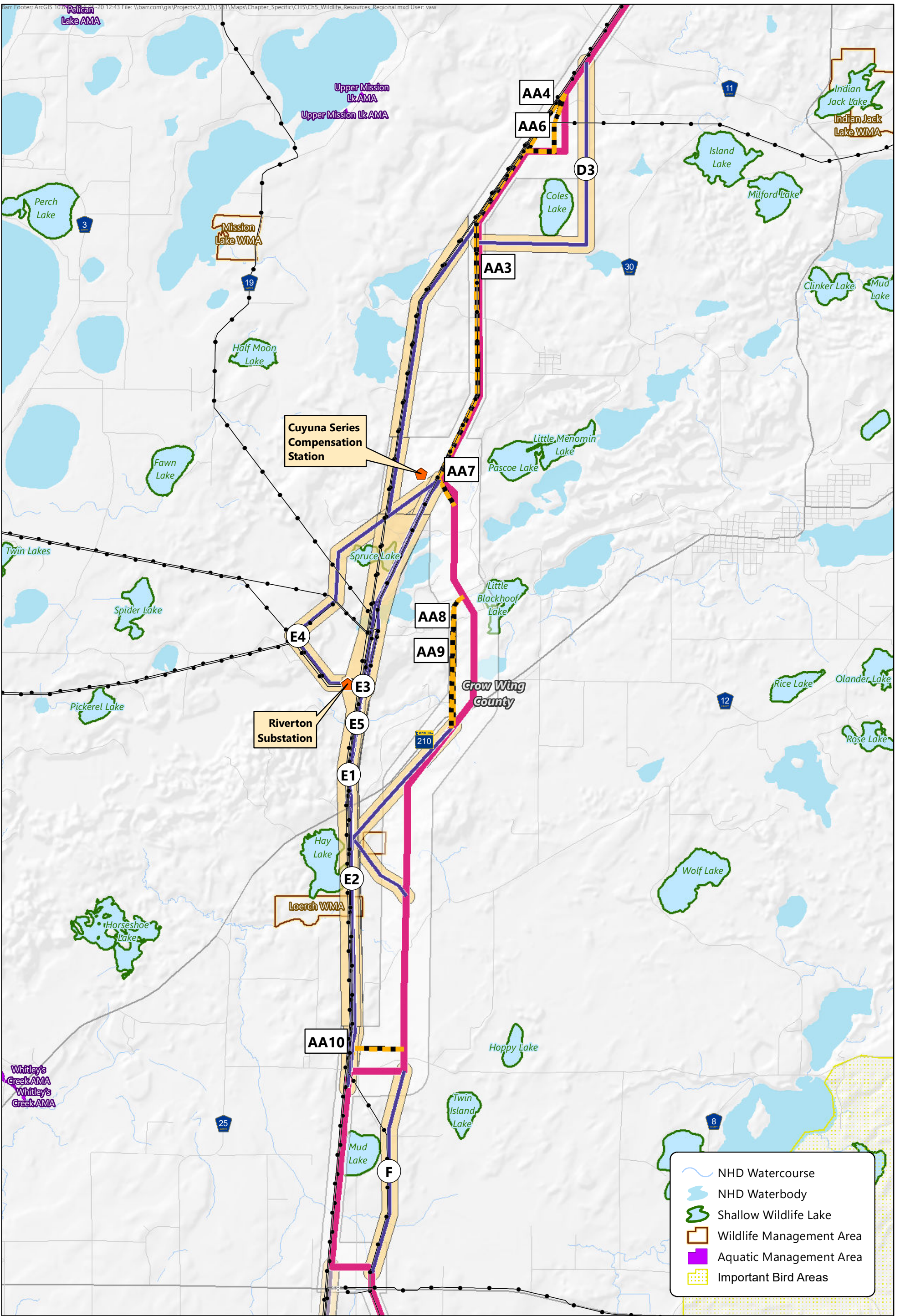


- Applicants' Proposed Route
- Route Width
- Route Alternative
- Alignment Alternative
- Route Alternative Width
- Existing Transmission Line



Map 5H-2

WILDLIFE RESOURCES
Hill City to Little Pine Region
Northland Reliability Project

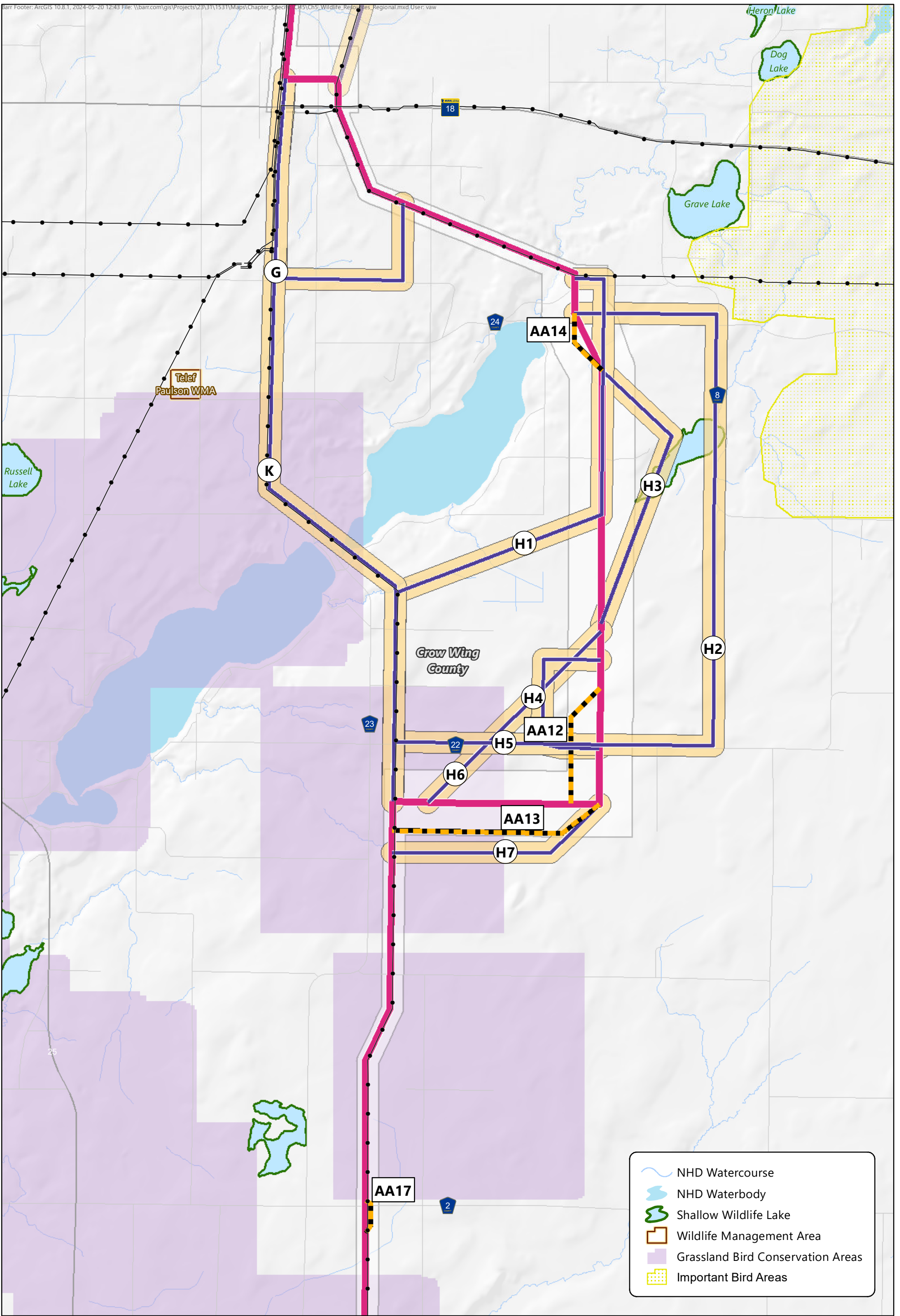


	NHD Watercourse
	NHD Waterbody
	Shallow Wildlife Lake
	Wildlife Management Area
	Aquatic Management Area
	Important Bird Areas

	Applicants' Proposed Route		Existing Transmission Line
	Route Width		Riverton Substation
	Route Alternative		Cuyuna Series Compensation Station
	Alignment Alternative		
	Route Alternative Width		

Miles
 0 0.5 1

Map 5H-3
WILDLIFE RESOURCES
 Cole Lake/Riverton Region
 Northland Reliability Project



- Applicants' Proposed Route
- Existing Transmission Line
- Route Width
- Route Alternative
- Alignment Alternative
- Route Alternative Width

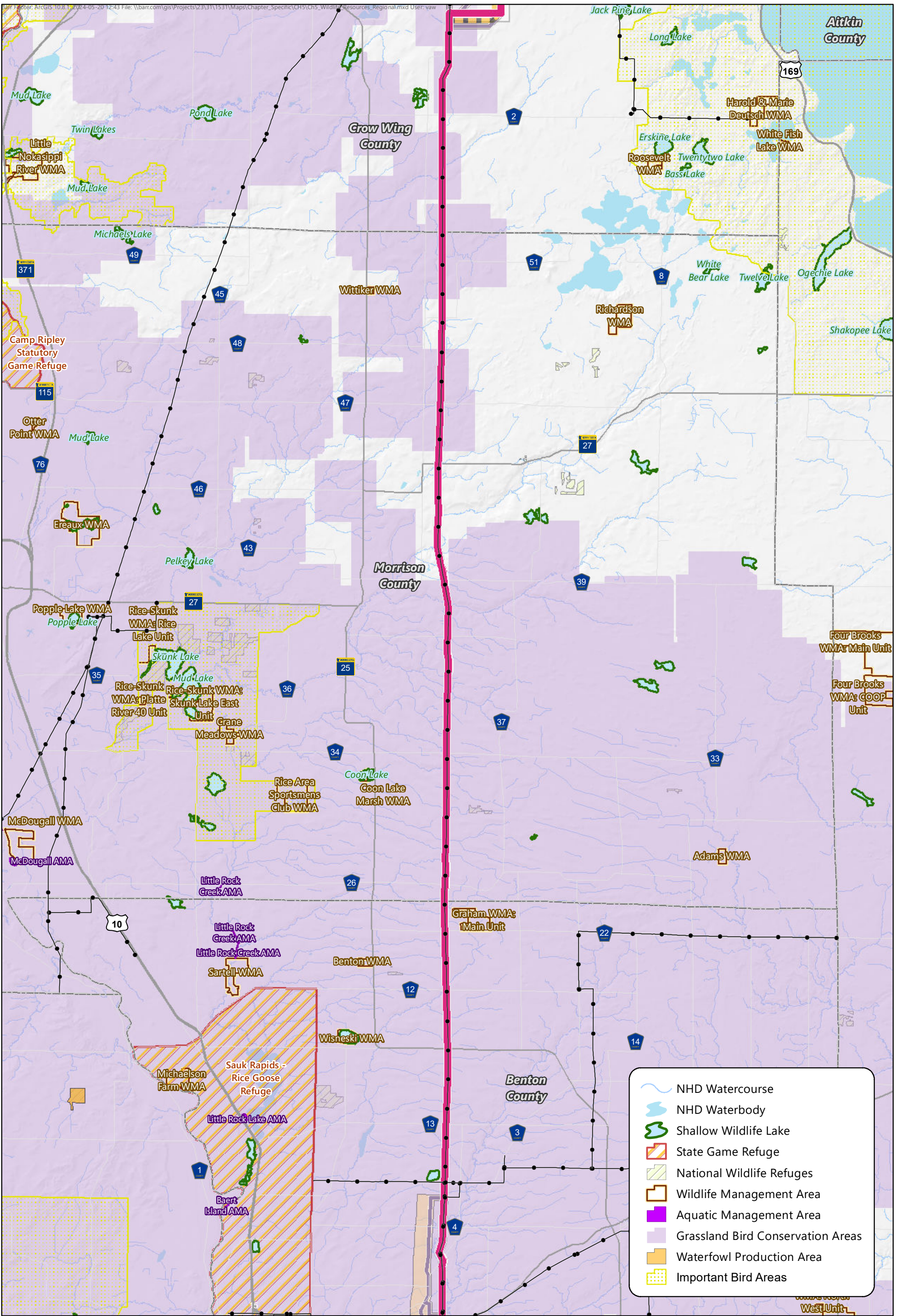
- NHD Watercourse
- NHD Waterbody
- Shallow Wildlife Lake
- Wildlife Management Area
- Grassland Bird Conservation Areas
- Important Bird Areas



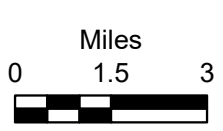
Feet
0 2,000 4,000

Map 5H-4

WILDLIFE RESOURCES
Long Lake Region
Northland Reliability Project

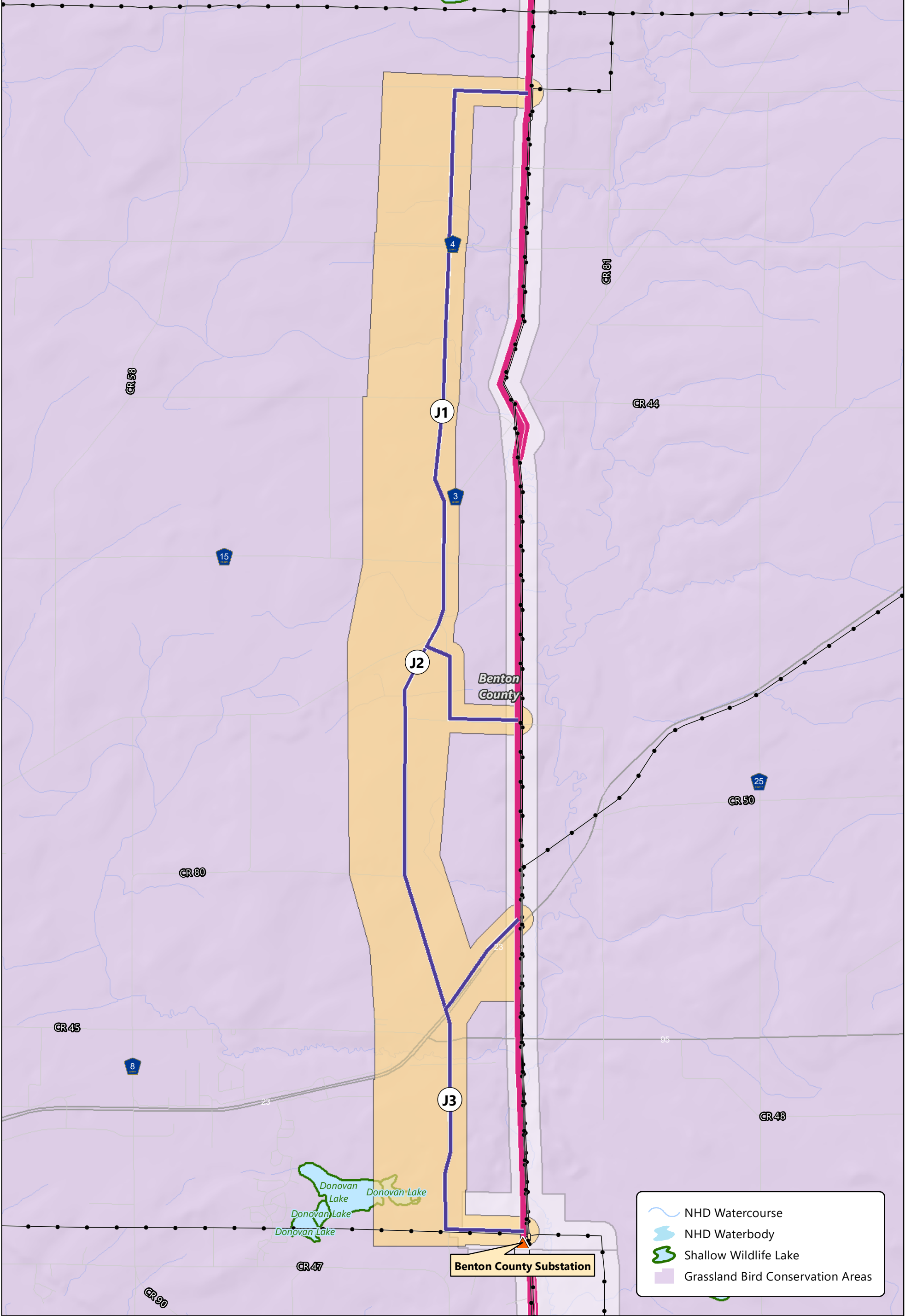









- Applicants' Proposed Route
- Existing Transmission Line
- Route Width
- Route Alternative
- Alignment Alternative
- Route Alternative Width

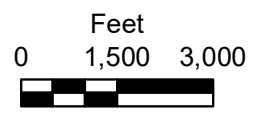


Map 5H-5

WILDLIFE RESOURCES
Morrison County Region
Northland Reliability Project

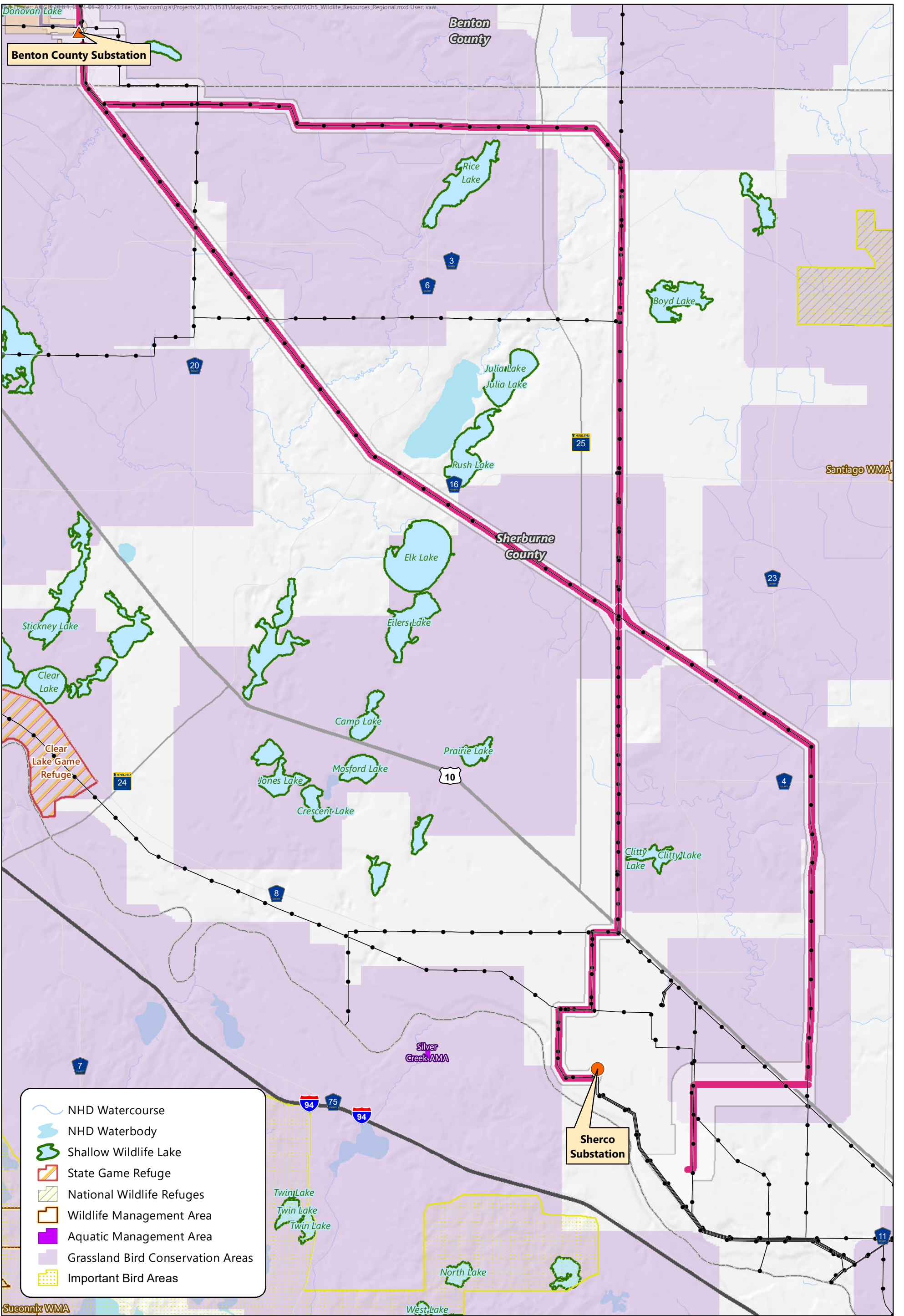


-  Applicants' Proposed Route
-  Existing Transmission Line
-  Route Width
-  Route Alternative
-  Alignment Alternative
-  Route Alternative Width
-  Benton County Substation



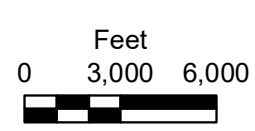
Map 5H-6

WILDLIFE RESOURCES
 Benton County Elk River Region
 Northland Reliability Project



- NHD Watercourse
- NHD Waterbody
- Shallow Wildlife Lake
- State Game Refuge
- National Wildlife Refuges
- Wildlife Management Area
- Aquatic Management Area
- Grassland Bird Conservation Areas
- Important Bird Areas

- Applicants' Proposed Route
- Existing Transmission Line
- Route Width
- Route Alternative
- Alignment Alternative
- Route Alternative Width
- Benton County Substation
- Sherco Substation



Map 5H-7

WILDLIFE RESOURCES
 Sherburne County Region
 Northland Reliability Project