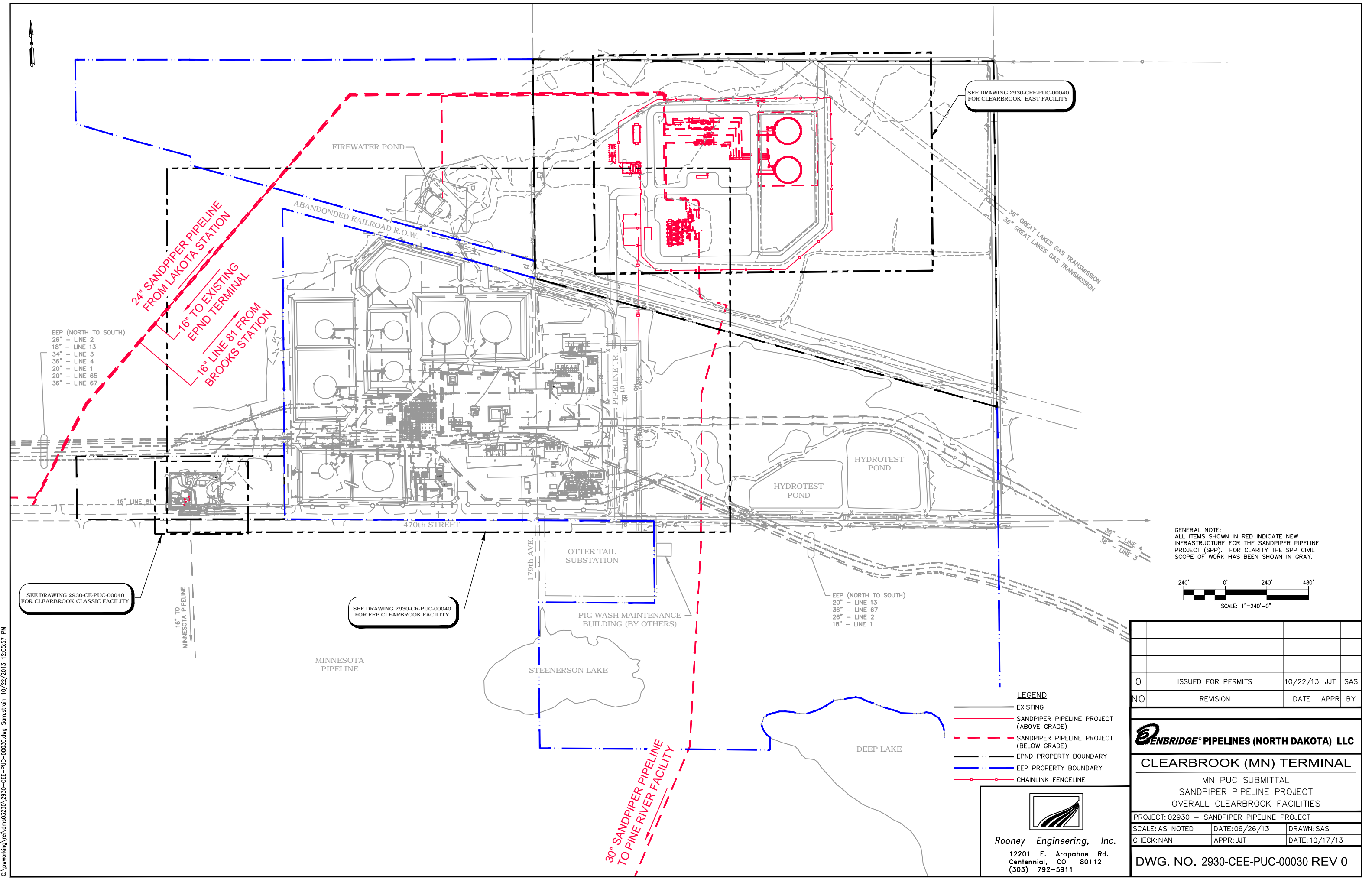


Appendix G.3

Preliminary Clearbrook, Minnesota Facility Drawings

Preliminary Pine River, Minnesota Facility Drawing

*(These drawings indicate both the preliminary facility locations
and designs pending additional engineering design and
geotechnical site studies)*



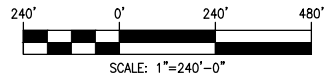
EEP (NORTH TO SOUTH)
 26" - LINE 2
 18" - LINE 13
 34" - LINE 3
 36" - LINE 4
 20" - LINE 1
 20" - LINE 65
 36" - LINE 67

SEE DRAWING 2930-CEE-PUC-00040
 FOR CLEARBROOK EAST FACILITY


SEE DRAWING 2930-CE-PUC-00040
 FOR CLEARBROOK CLASSIC FACILITY

SEE DRAWING 2930-CR-PUC-00040
 FOR EEP CLEARBROOK FACILITY

GENERAL NOTE:
 ALL ITEMS SHOWN IN RED INDICATE NEW
 INFRASTRUCTURE FOR THE SANDPIPER PIPELINE
 PROJECT (SPP). FOR CLARITY THE SPP CIVIL
 SCOPE OF WORK HAS BEEN SHOWN IN GRAY.



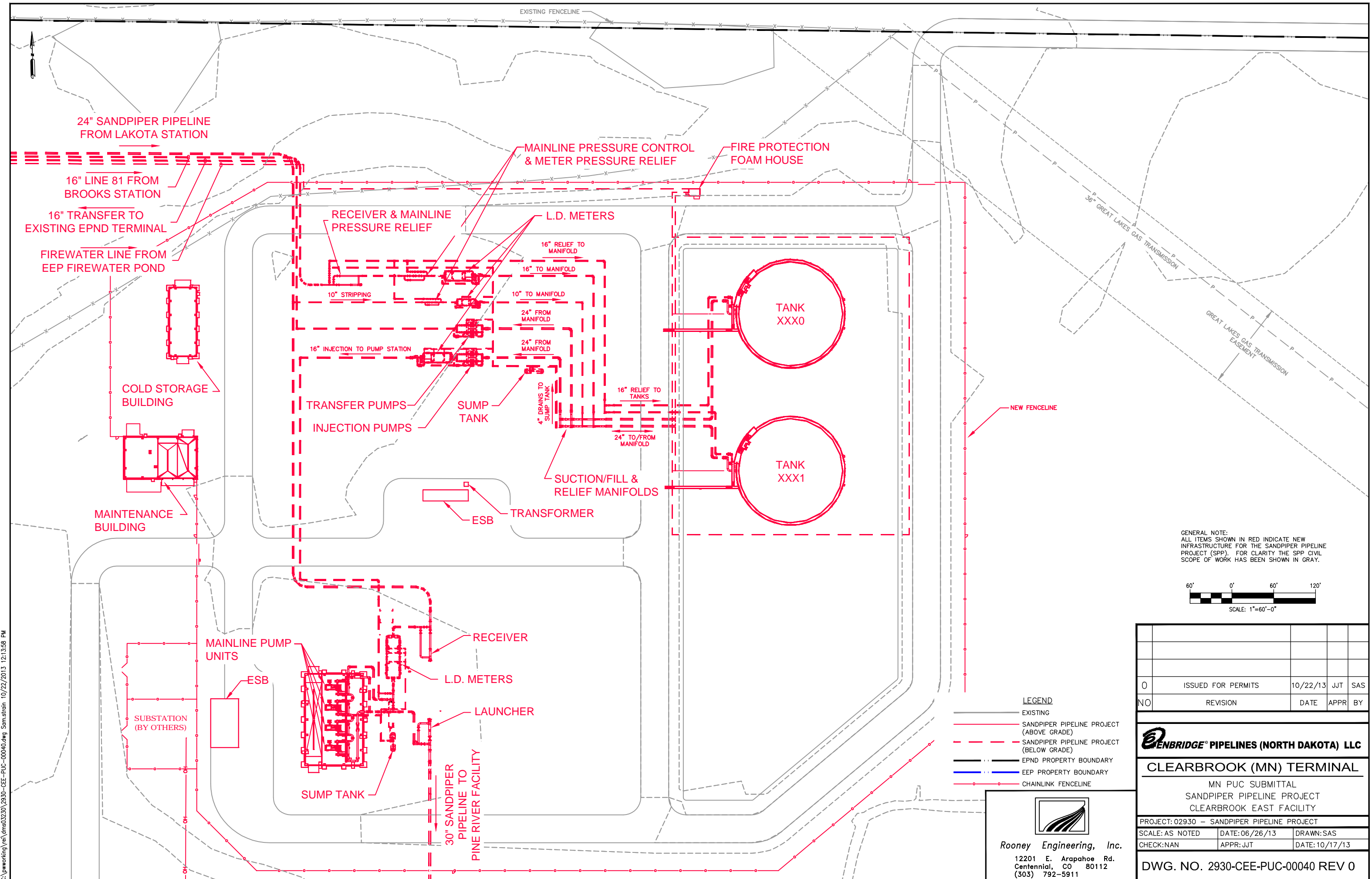
- LEGEND**
- EXISTING
 - SANDPIPER PIPELINE PROJECT (ABOVE GRADE)
 - - - SANDPIPER PIPELINE PROJECT (BELOW GRADE)
 - - - EPND PROPERTY BOUNDARY
 - EEP PROPERTY BOUNDARY
 - CHAINLINK FENCELINE



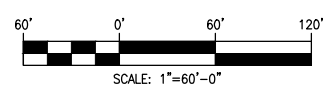
Rooney Engineering, Inc.
 12201 E. Arapahoe Rd.
 Centennial, CO 80112
 (303) 792-5911

0	ISSUED FOR PERMITS	10/22/13	JJT	SAS
NO	REVISION	DATE	APPR	BY
ENBRIDGE PIPELINES (NORTH DAKOTA) LLC				
CLEARBROOK (MN) TERMINAL				
MN PUC SUBMITTAL SANDPIPER PIPELINE PROJECT OVERALL CLEARBROOK FACILITIES				
PROJECT: 02930 - SANDPIPER PIPELINE PROJECT				
SCALE: AS NOTED	DATE: 06/26/13	DRAWN: SAS		
CHECK: NAN	APPR: JJT	DATE: 10/17/13		
DWG. NO. 2930-CEE-PUC-00030 REV 0				

C:\pwworking\ref\dms03230_2930-CEE-PUC-00030.dwg Sumstrain 10/22/2013 12:05:57 PM



GENERAL NOTE:
 ALL ITEMS SHOWN IN RED INDICATE NEW
 INFRASTRUCTURE FOR THE SANDPIPER PIPELINE
 PROJECT (SPP). FOR CLARITY THE SPP CIVIL
 SCOPE OF WORK HAS BEEN SHOWN IN GRAY.



0	ISSUED FOR PERMITS	10/22/13	JJT	SAS
NO	REVISION	DATE	APPR	BY

ENBRIDGE PIPELINES (NORTH DAKOTA) LLC

CLEARBROOK (MN) TERMINAL


MN PUC SUBMITTAL
 SANDPIPER PIPELINE PROJECT
 CLEARBROOK EAST FACILITY

PROJECT: 02930 - SANDPIPER PIPELINE PROJECT

SCALE: AS NOTED	DATE: 06/26/13	DRAWN: SAS
CHECK: NAN	APPR: JJT	DATE: 10/17/13

DWG. NO. 2930-CEE-PUC-00040 REV 0

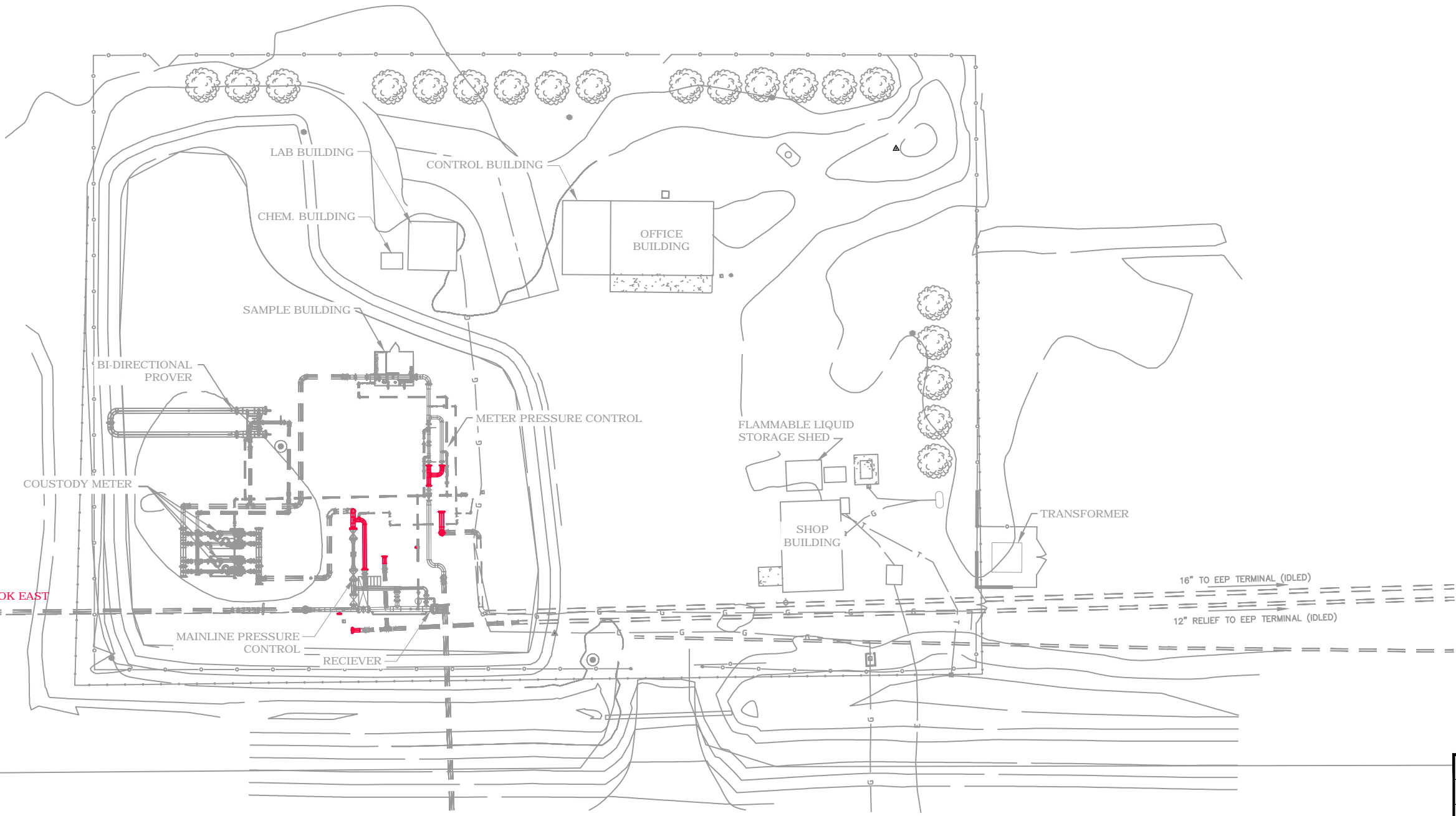
- LEGEND**
- EXISTING
 - SANDPIPER PIPELINE PROJECT (ABOVE GRADE)
 - - - SANDPIPER PIPELINE PROJECT (BELOW GRADE)
 - - - EPND PROPERTY BOUNDARY
 - - - EEP PROPERTY BOUNDARY
 - - - CHAINLINK FENCELINE



Rooney Engineering, Inc.
 12201 E. Arapahoe Rd.
 Centennial, CO 80112
 (303) 792-5911

C:\pwworking\ref\dms03230_2930-CEE-PUC-00040.dwg Sam.stain 10/22/2013 12:13:58 PM

C:\pwworking\ref\dms01794_2930-CE-PUC-00040.dwg Sam.stain 10/22/2013 12:21:56 PM



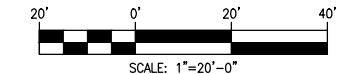
16" FROM CLEARBROOK EAST

16" TO EEP TERMINAL (IDLED)

12" RELIEF TO EEP TERMINAL (IDLED)


470th STREET

16" TO MINNESOTA PIPELINE



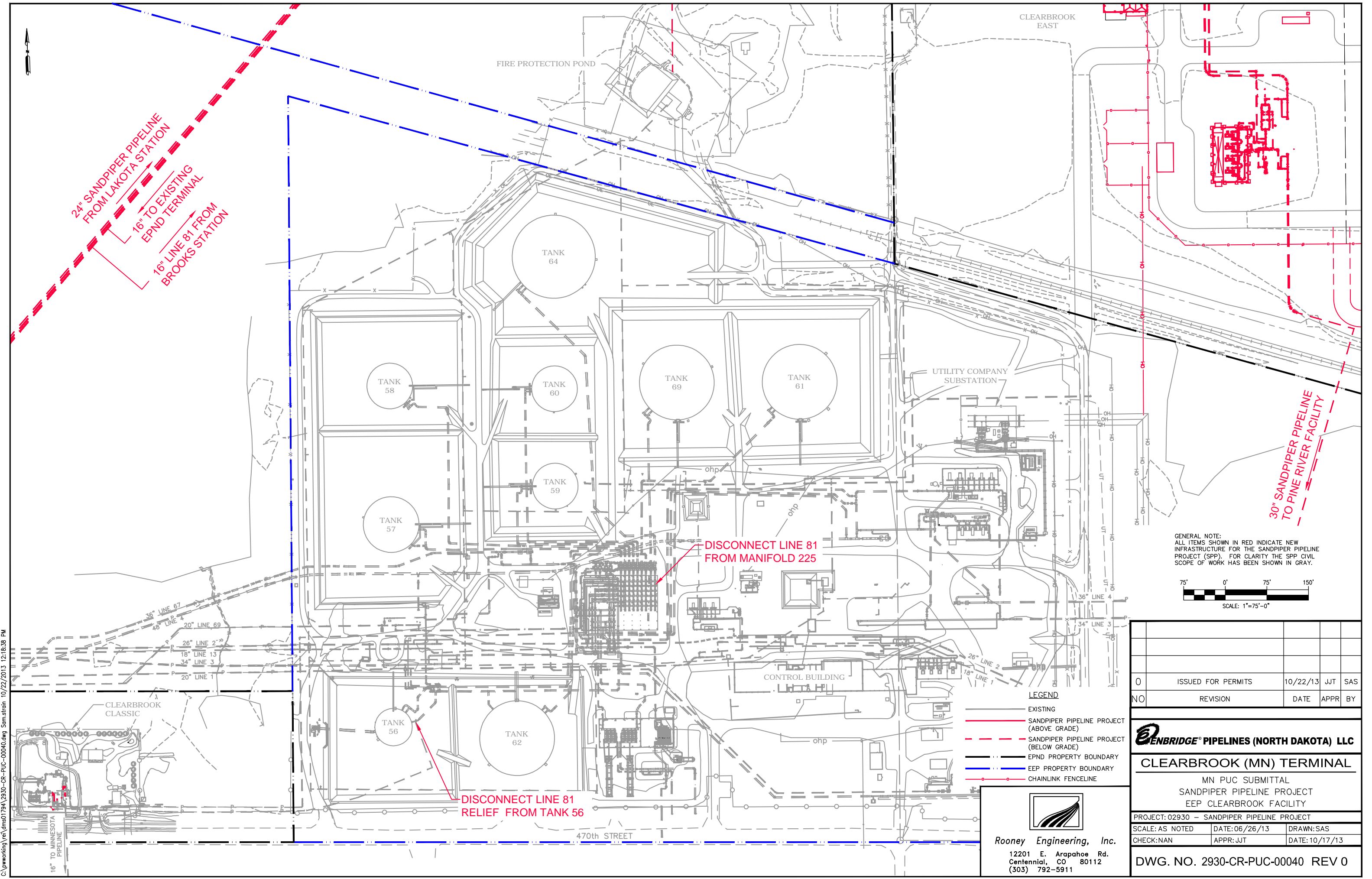
GENERAL NOTE:
ALL ITEMS SHOWN IN RED INDICATE NEW INFRASTRUCTURE FOR THE SANDPIPER PIPELINE PROJECT (SPP). FOR CLARITY THE SPP CIVIL SCOPE OF WORK HAS BEEN SHOWN IN GRAY.

- LEGEND**
- EXISTING
 - SANDPIPER PIPELINE PROJECT (ABOVE GRADE)
 - - - SANDPIPER PIPELINE PROJECT (BELOW GRADE)
 - - - EPND PROPERTY BOUNDARY
 - - - EEP PROPERTY BOUNDARY
 - - - CHAINLINK FENCELINE

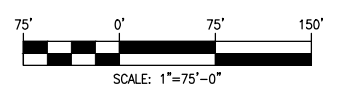


Rooney Engineering, Inc.
12201 E. Arapahoe Rd.
Centennial, CO 80112
(303) 792-5911

0	ISSUED FOR PERMITS	10/22/13	JJT	SAS
NO	REVISION	DATE	APPR	BY
ENBRIDGE PIPELINES (NORTH DAKOTA) LLC				
CLEARBROOK (MN) TERMINAL				
MN PUC SUBMITTAL SANDPIPER PIPELINE PROJECT CLEARBROOK CLASSIC FACILITY				
PROJECT: 02930 — SANDPIPER PIPELINE PROJECT				
SCALE: AS NOTED	DATE: 06/26/13	DRAWN: SAS		
CHECK: NAN	APPR: JJT	DATE: 10/17/13		
DWG. NO. 2930-CE-PUC-00040 REV 0				



GENERAL NOTE:
 ALL ITEMS SHOWN IN RED INDICATE NEW INFRASTRUCTURE FOR THE SANDPIPER PIPELINE PROJECT (SPP). FOR CLARITY THE SPP CIVIL SCOPE OF WORK HAS BEEN SHOWN IN GRAY.



- LEGEND**
- EXISTING
 - SANDPIPER PIPELINE PROJECT (ABOVE GRADE)
 - - - SANDPIPER PIPELINE PROJECT (BELOW GRADE)
 - - - EPND PROPERTY BOUNDARY
 - - - EEP PROPERTY BOUNDARY
 - - - CHAINLINK FENCELINE

Rooney Engineering, Inc.
 12201 E. Arapahoe Rd.
 Centennial, CO 80112
 (303) 792-5911

0	ISSUED FOR PERMITS	10/22/13	JJT	SAS
NO	REVISION	DATE	APPR	BY

ENBRIDGE PIPELINES (NORTH DAKOTA) LLC

CLEARBROOK (MN) TERMINAL

MN PUC SUBMITTAL
 SANDPIPER PIPELINE PROJECT
 EEP CLEARBROOK FACILITY

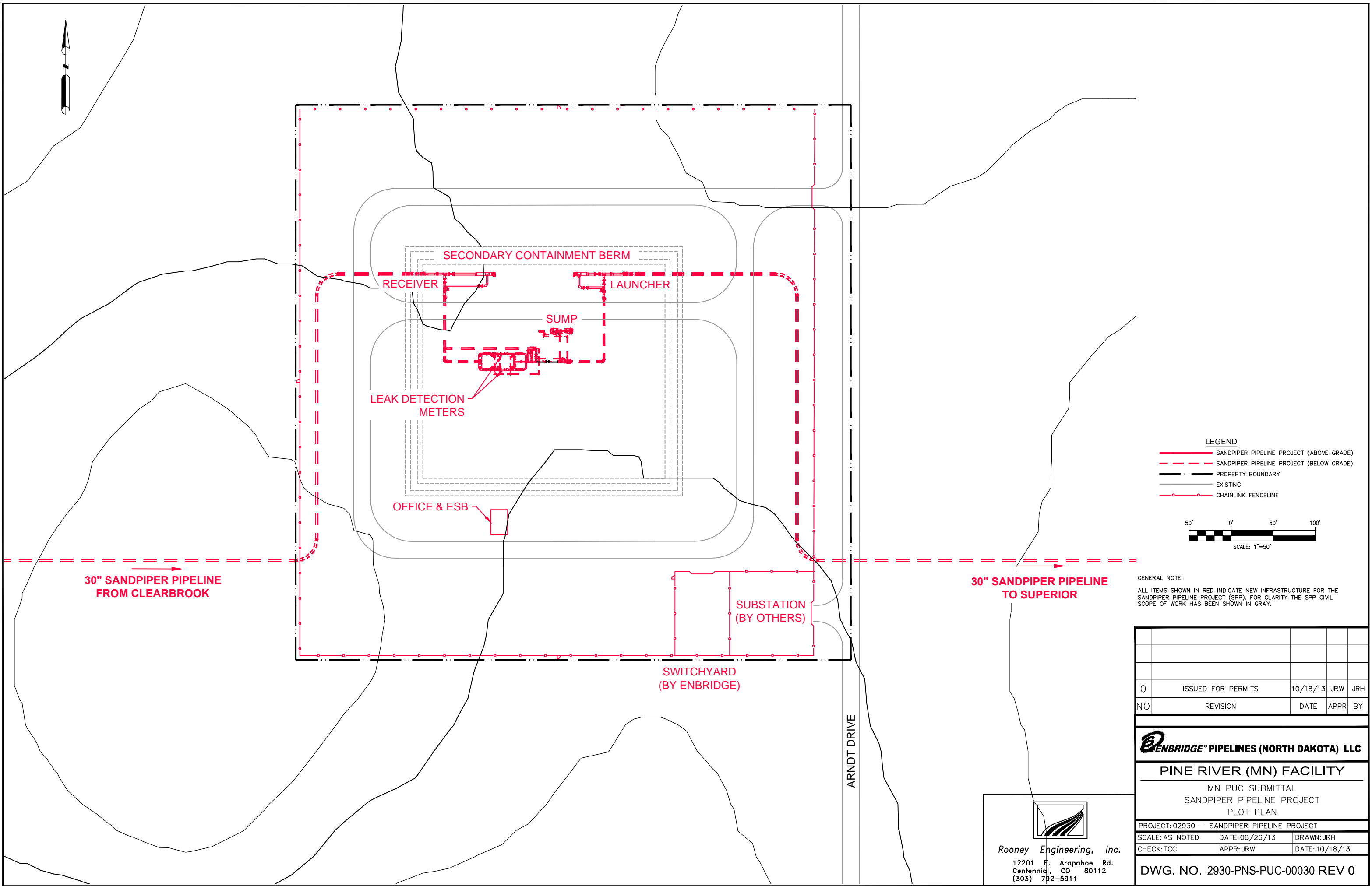
PROJECT: 02930 - SANDPIPER PIPELINE PROJECT

SCALE: AS NOTED	DATE: 06/26/13	DRAWN: SAS
CHECK: NAN	APPR: JJT	DATE: 10/17/13

DWG. NO. 2930-CR-PUC-00040 REV 0

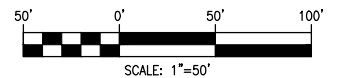
C:\pwworking\ref\dms01794_2930-CR-PUC-00040.dwg Som.stn 10/22/2013 12:16:38 PM

C:\pwworking\ref\dms01838_2930-PNS-PUC-00030.dwg Nicholas.reichard 10/18/2013 3:34:29 PM



LEGEND

- SANDPIPER PIPELINE PROJECT (ABOVE GRADE)
- - - - SANDPIPER PIPELINE PROJECT (BELOW GRADE)
- PROPERTY BOUNDARY
- EXISTING
- CHAINLINK FENCELINE



GENERAL NOTE:
 ALL ITEMS SHOWN IN RED INDICATE NEW INFRASTRUCTURE FOR THE SANDPIPER PIPELINE PROJECT (SPP). FOR CLARITY THE SPP CIVIL SCOPE OF WORK HAS BEEN SHOWN IN GRAY.

NO	REVISION	DATE	APPR	BY
0	ISSUED FOR PERMITS	10/18/13	JRW	JRH

ENBRIDGE PIPELINES (NORTH DAKOTA) LLC


PINE RIVER (MN) FACILITY

MN PUC SUBMITTAL
 SANDPIPER PIPELINE PROJECT
 PLOT PLAN

PROJECT: 02930 – SANDPIPER PIPELINE PROJECT

SCALE: AS NOTED	DATE: 06/26/13	DRAWN: JRH
CHECK: TCC	APPR: JRW	DATE: 10/18/13

DWG. NO. 2930-PNS-PUC-00030 REV 0



Rooney Engineering, Inc.
 12201 E. Arapahoe Rd.
 Centennial, CO 80112
 (303) 792-5911

ARNDT DRIVE