

PALMER'S CREEK WIND FARM, LLC

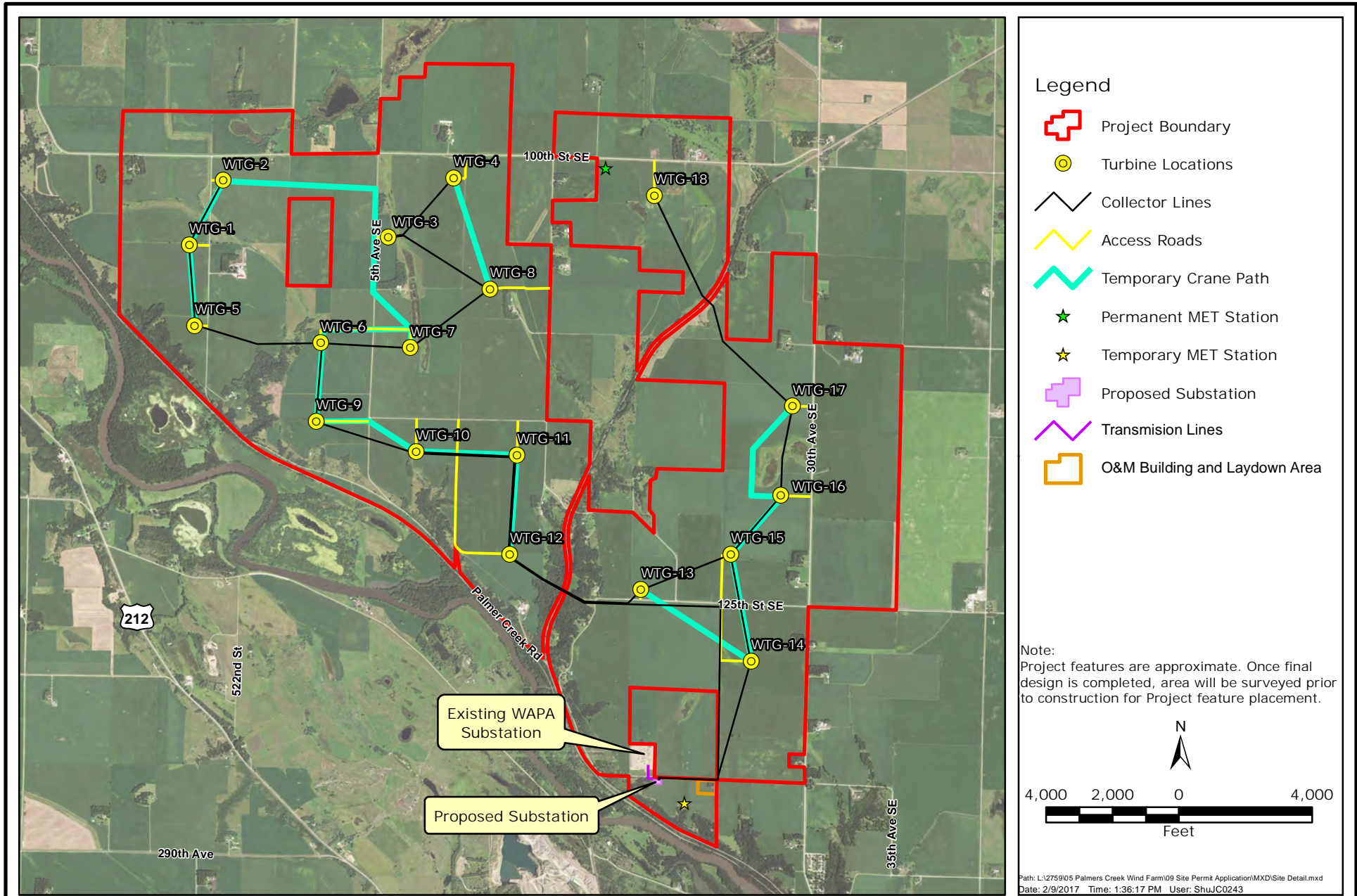
Site Location Map



Responsive partner. Exceptional outcomes.

FEB 2017

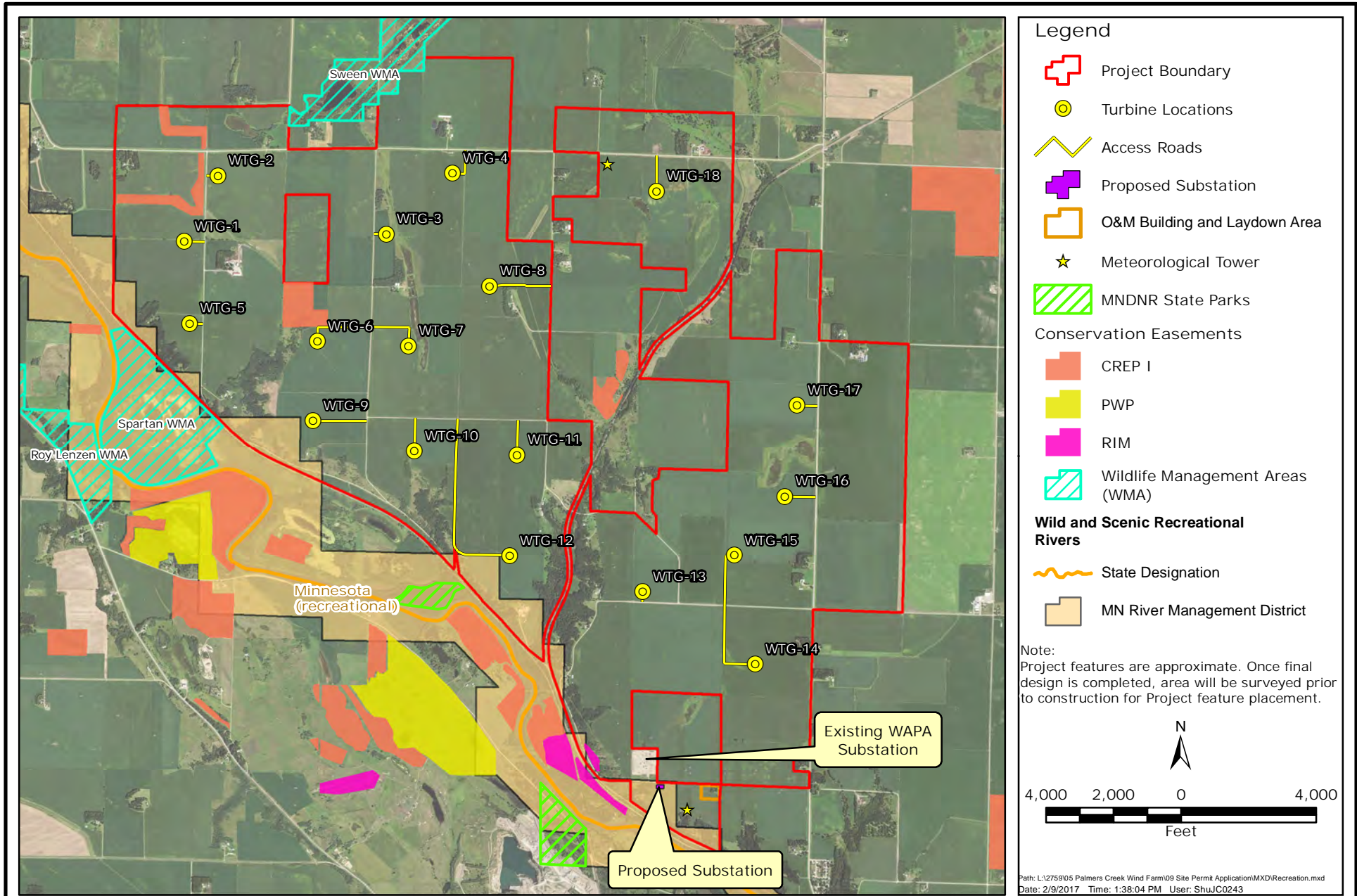
Figure 1



PALMER'S CREEK WIND FARM, LLC
 Site Detail Map



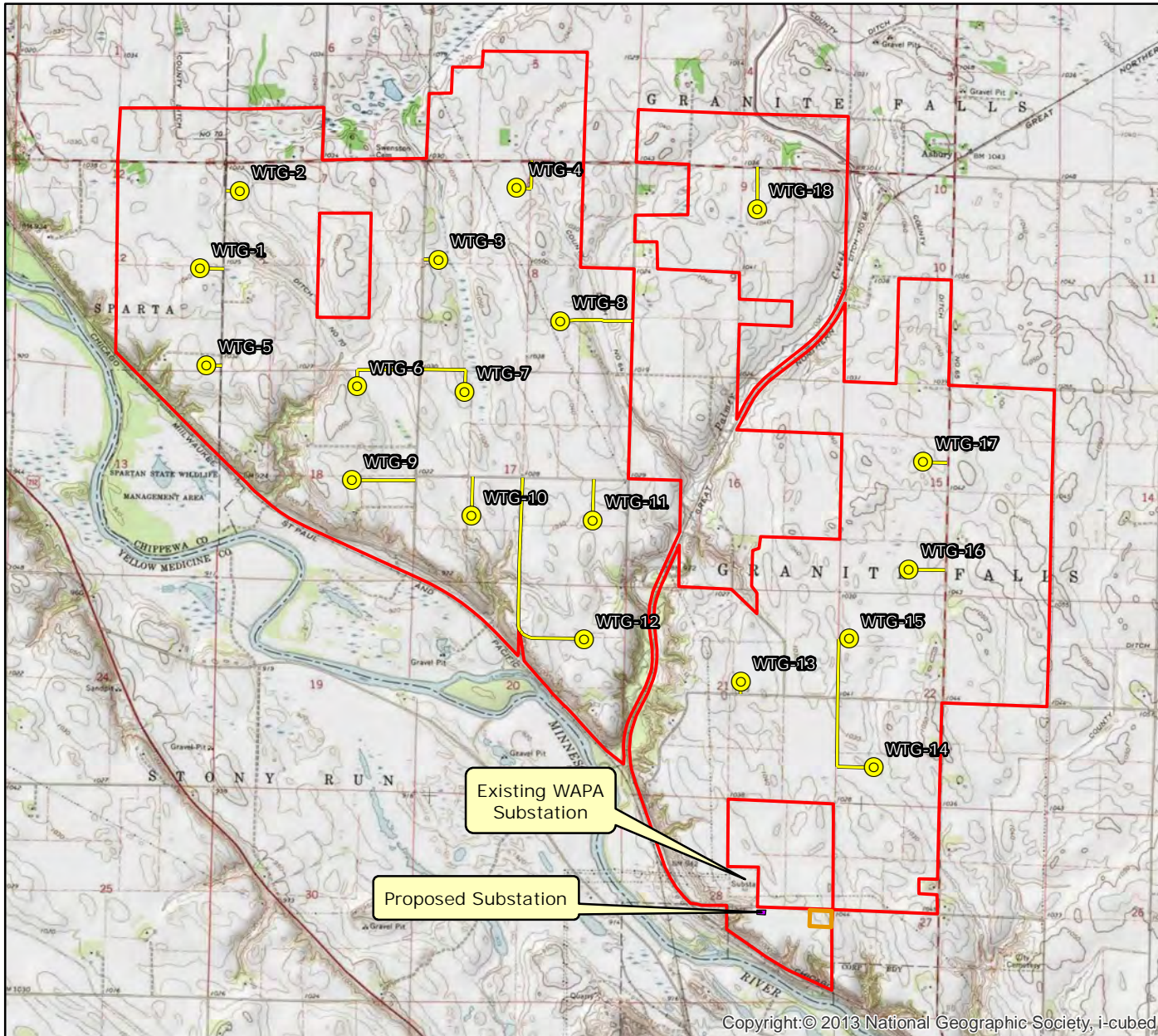
FEB 2017
 Figure 2








PALMER'S CREEK WIND FARM, LLC
Recreation and Conservation Areas



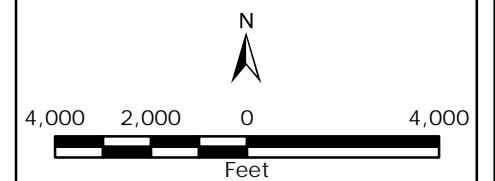
FEB 2017
Figure 3



Legend

-  Project Location
-  Turbine Locations
-  Access Roads
-  Proposed Substation
-  O&M Building and Laydown Area

Note:
Project features are approximate. Once final design is completed, area will be surveyed prior to construction for Project feature placement.



Path: L:\2759\05 Palmers Creek Wind Farm\09 Site Permit Application\MXD\Topo.mxd
Date: 2/9/2017 Time: 1:36:35 PM User: ShuJC0243

Copyright © 2013 National Geographic Society, i-cubed

PALMER'S CREEK WIND FARM, LLC

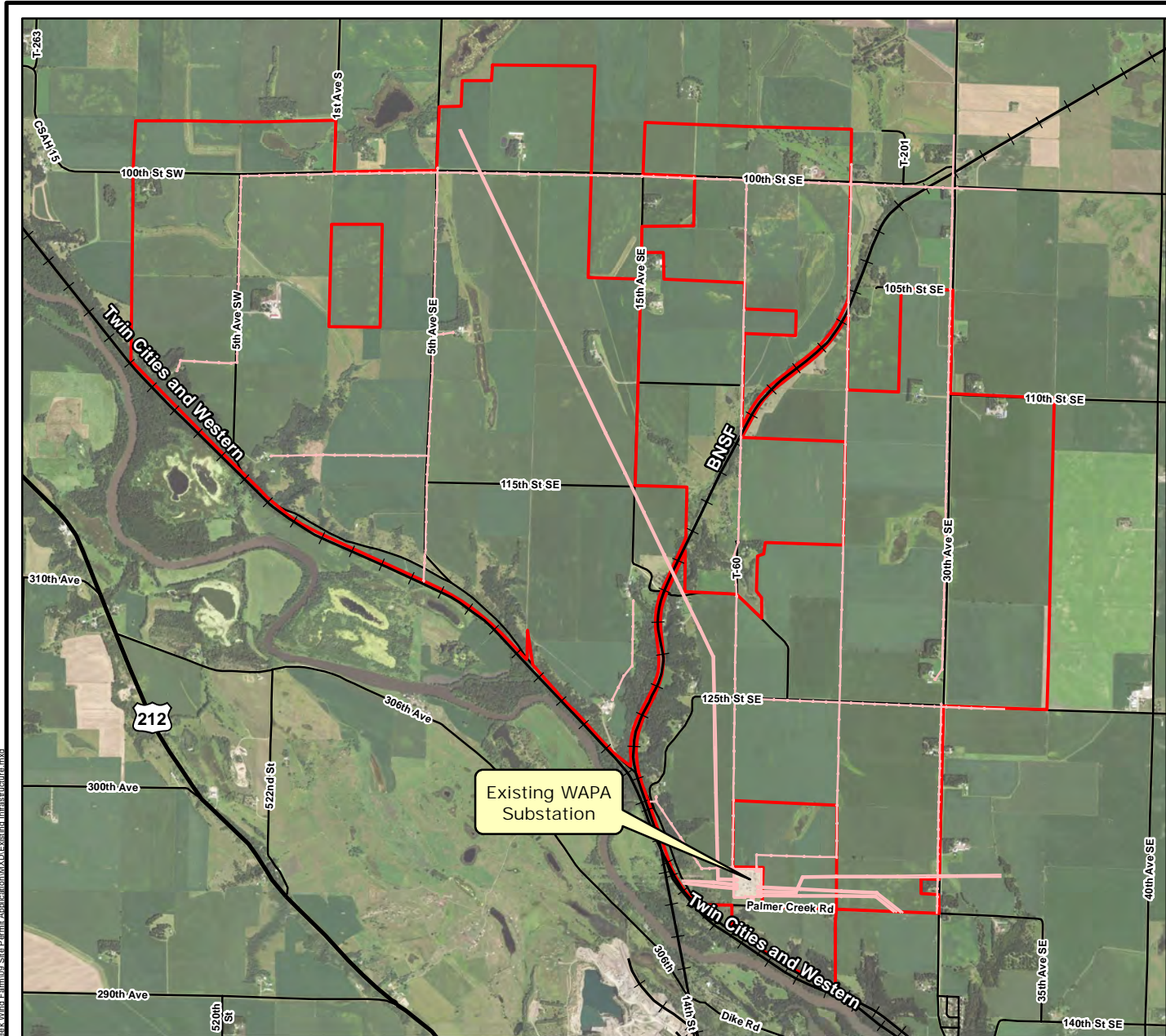
Topographic Map






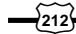


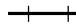
Responsive partner. Exceptional outcomes.

FEB 2017

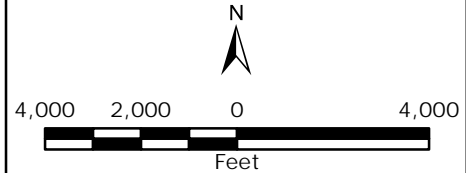
Figure 4



Legend

-  Project Boundary
-  Existing Overhead Power Lines
- Existing Roads**
-  Interstate Highway
-  US Highway
-  Minnesota State Highway
-  City, County, or Township Road
-  Railroad

Note:
Project features are approximate. Once final design is completed, area will be surveyed prior to construction for Project feature placement.



Date: 2/9/2017 Time: 2:24:27 PM User: ShuJC0243

PALMER'S CREEK WIND FARM, LLC

Existing Infrastructure



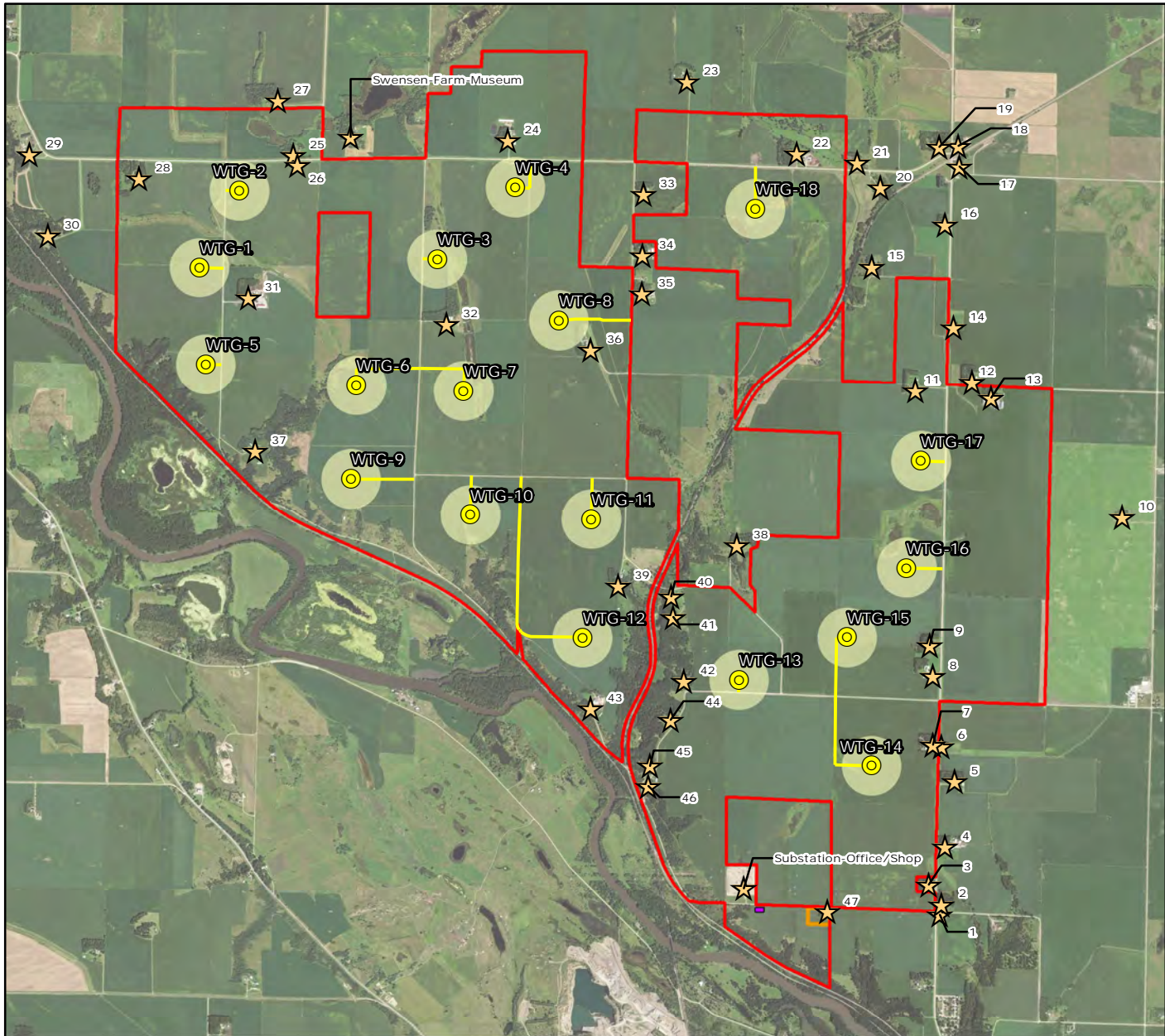
Responsive partner. Exceptional outcomes.

FEB 2017

Figure 5

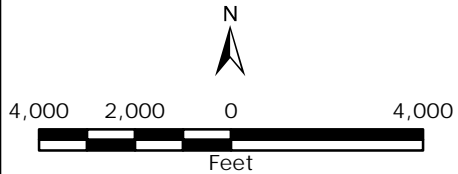
Path: L:\2725605_Palmer's_Creek_Wind_Farm\09_Site_Permit_Application\MXD\Existing_Infrastructure.mxd

Path: L:\2725605_Palmer's Creek Wind Farm\09_Site Permits_Application\MXD\Occupied Buildings.mxd



- Project
- Turbine Locations
- Turbine Setbacks (750FT)
- Occupied Buildings
- Access Roads
- O&M Building and Laydown Area
- Proposed Substation

Note:
Project features are approximate. Once final design is completed, area will be surveyed prior to construction for Project feature placement.



Date: 2/9/2017 Time: 1:39:17 PM User: ShuJC0243

PALMER'S CREEK WIND FARM, LLC

Occupied Buildings

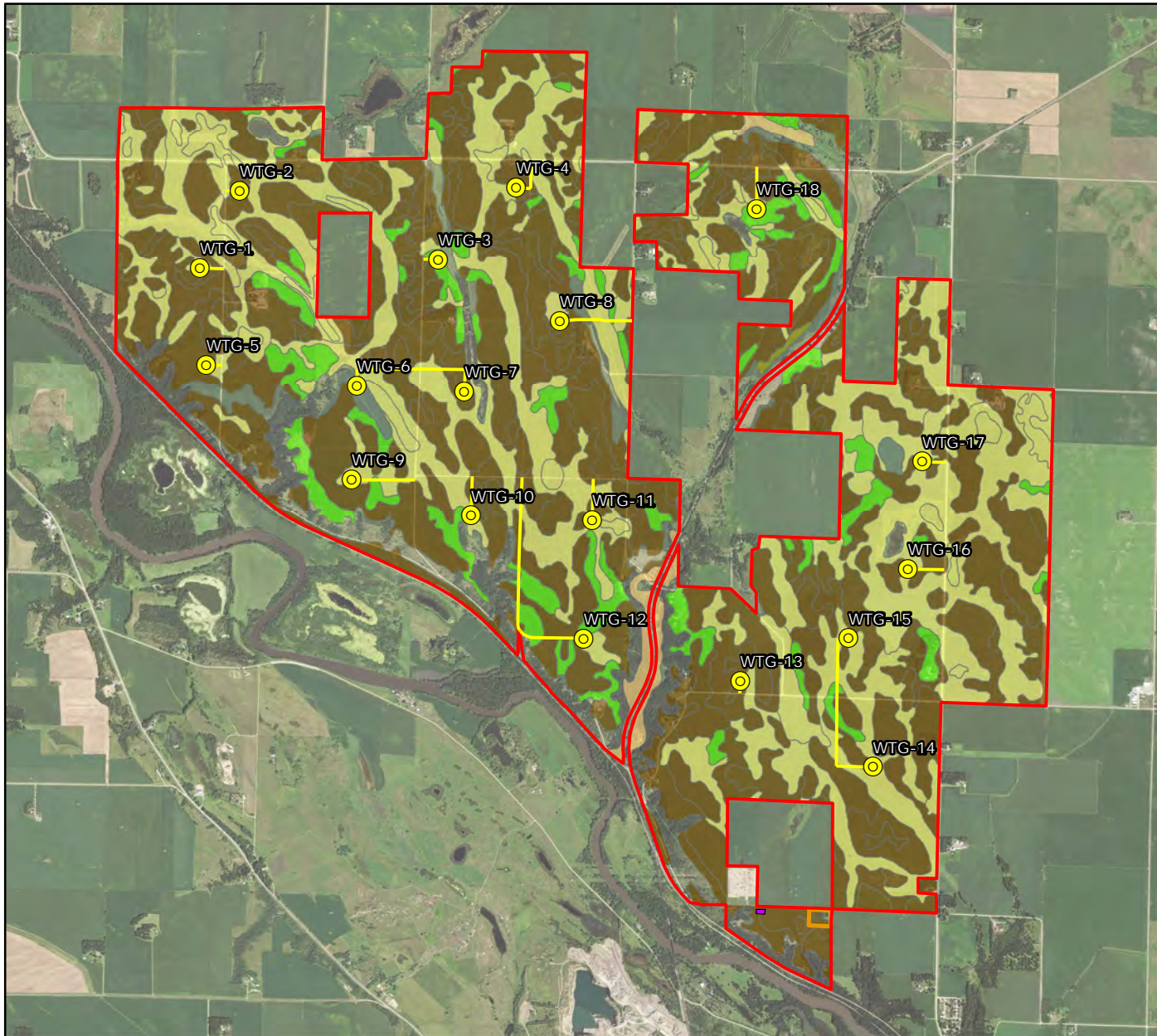


Responsive partner. Exceptional outcomes.

FEB 2017

Figure 6

Path: L:\275605\Palmer's Creek Wind Farm\09 Site Permit Application\MXD\Prime Farmland.mxd



- Project
- Turbine Locations
- Access Roads
- Prime
 - Not prime farmland
 - Farmland of statewide importance
 - Prime farmland if drained
 - Prime farmland if drained and either protected from flooding or not frequently flooded during the growing season
 - Prime farmland if protected from flooding or not frequently flooded during the growing season
 - All areas are prime farmland
- O&M Building and Laydown Area
- Proposed Substation

Note:
Project features are approximate. Once final design is completed, area will be surveyed prior to construction for Project feature placement.

N

4,000 2,000 0 4,000

Feet

Date: 2/9/2017 Time: 2:24:08 PM User: ShuJC0243

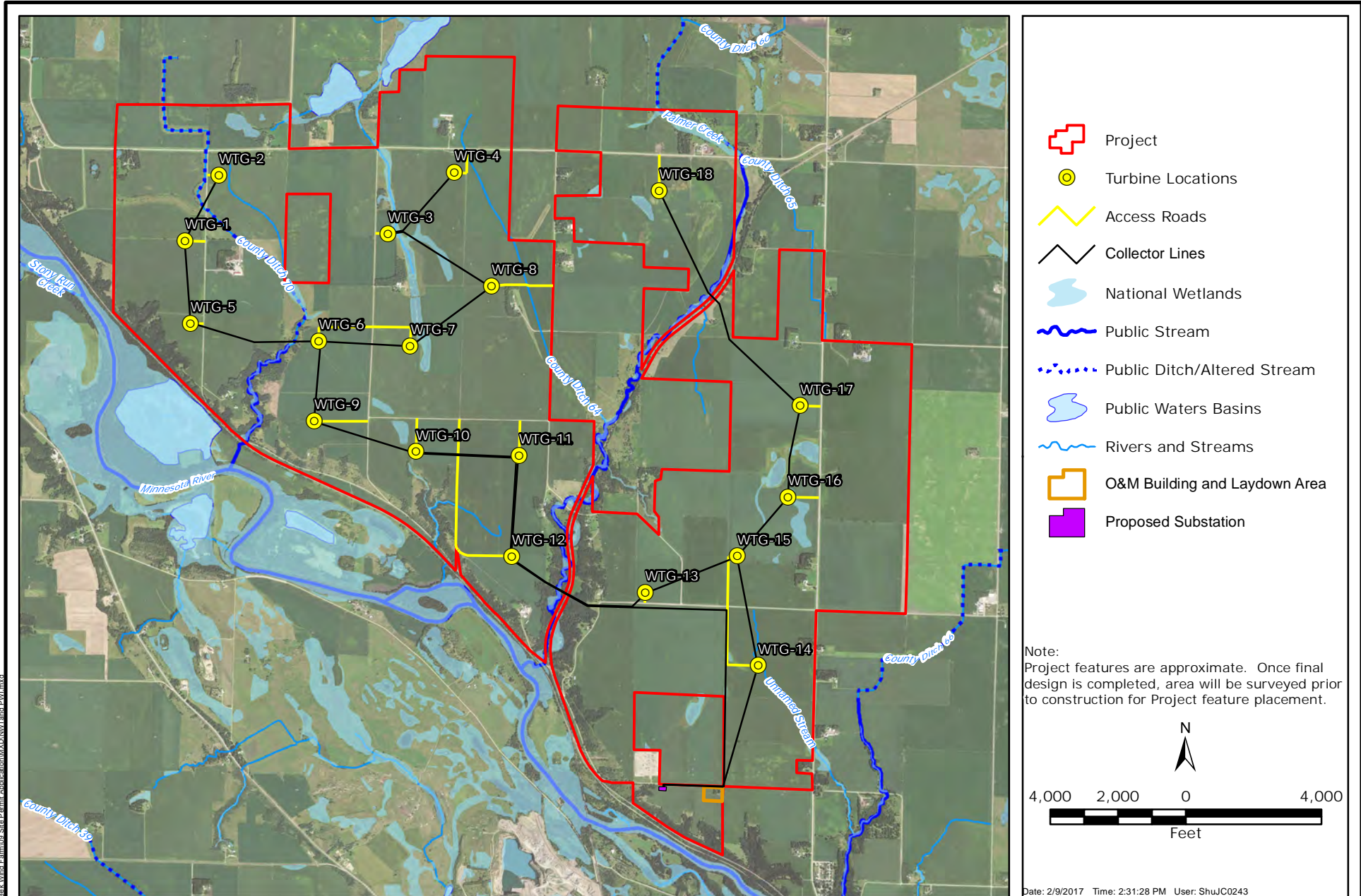
PALMER'S CREEK WIND FARM, LLC

Prime Farmland



FEB 2017

Figure 7



Path: L:\2725605\Palmer's Creek Wind Farm\09 Site Permits\Addition\MXD\NW1 Land PW1.mxd

PALMER'S CREEK WIND FARM, LLC

Waterbodies and Wetlands

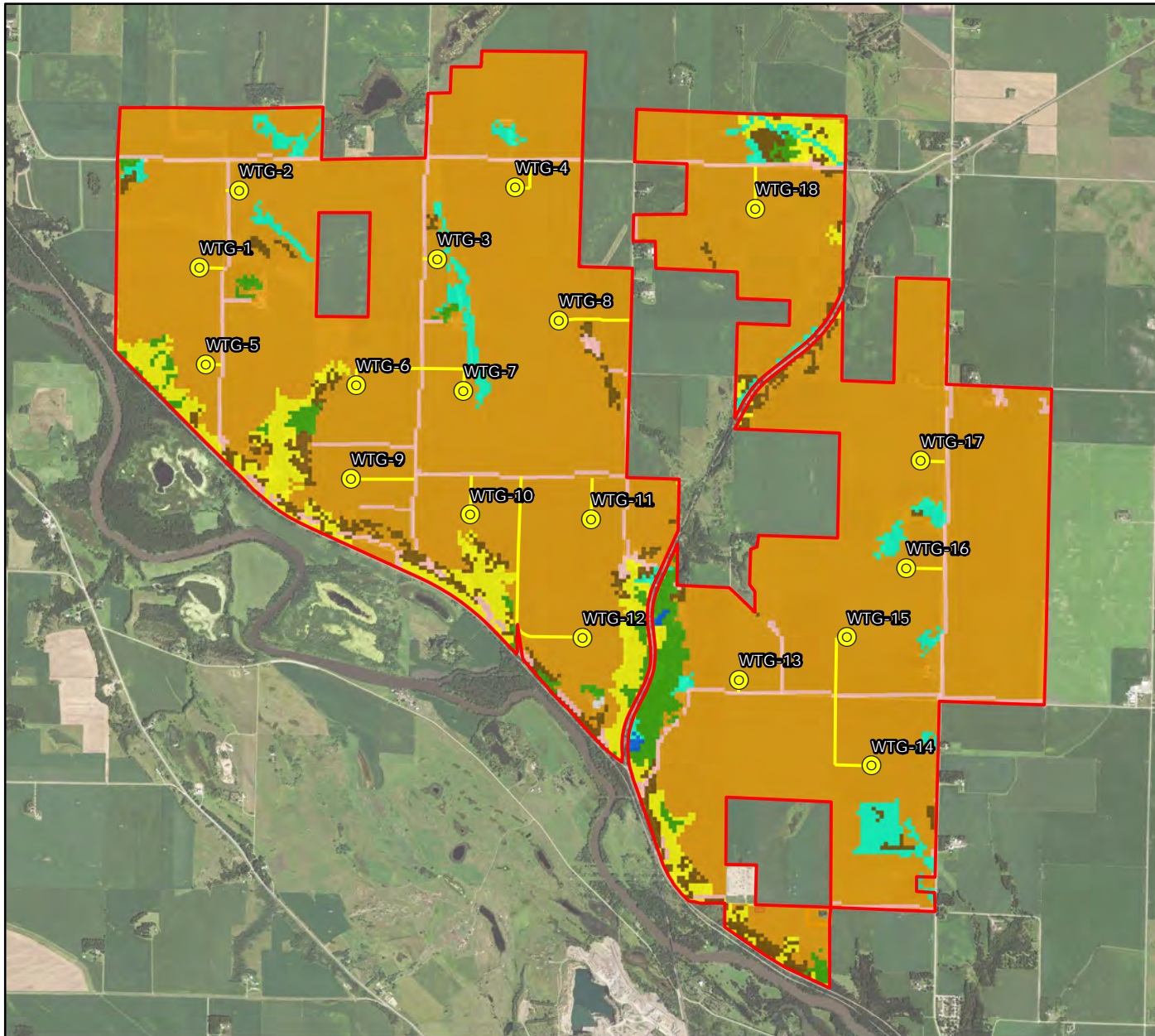















Responsive partner. Exceptional outcomes.

FEB 2017

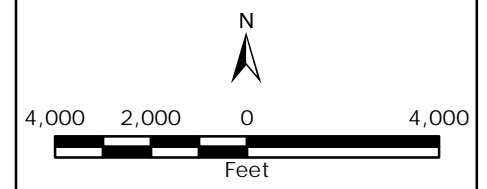
Figure 8

Path: L:\275605\Palmer's Creek Wind Farm\09 Site Permit Application\MXDLandCover.mxd



-  Project
-  Turbine Locations
-  Access Roads
- NLCD
 -  Barren Land
 -  Cultivated Crops
 -  Wooded
 -  Developed
 -  Wetland
 -  Hay/Pasture
 -  Grassland
 -  Open
 -  O&M Building and Laydown Area
 -  Proposed Substation

Note:
Project features are approximate. Once final design is completed, area will be surveyed prior to construction for Project feature placement.



Date: 2/9/2017 Time: 2:30:12 PM User: ShuJC0243

PALMER'S CREEK WIND FARM, LLC

Land Cover

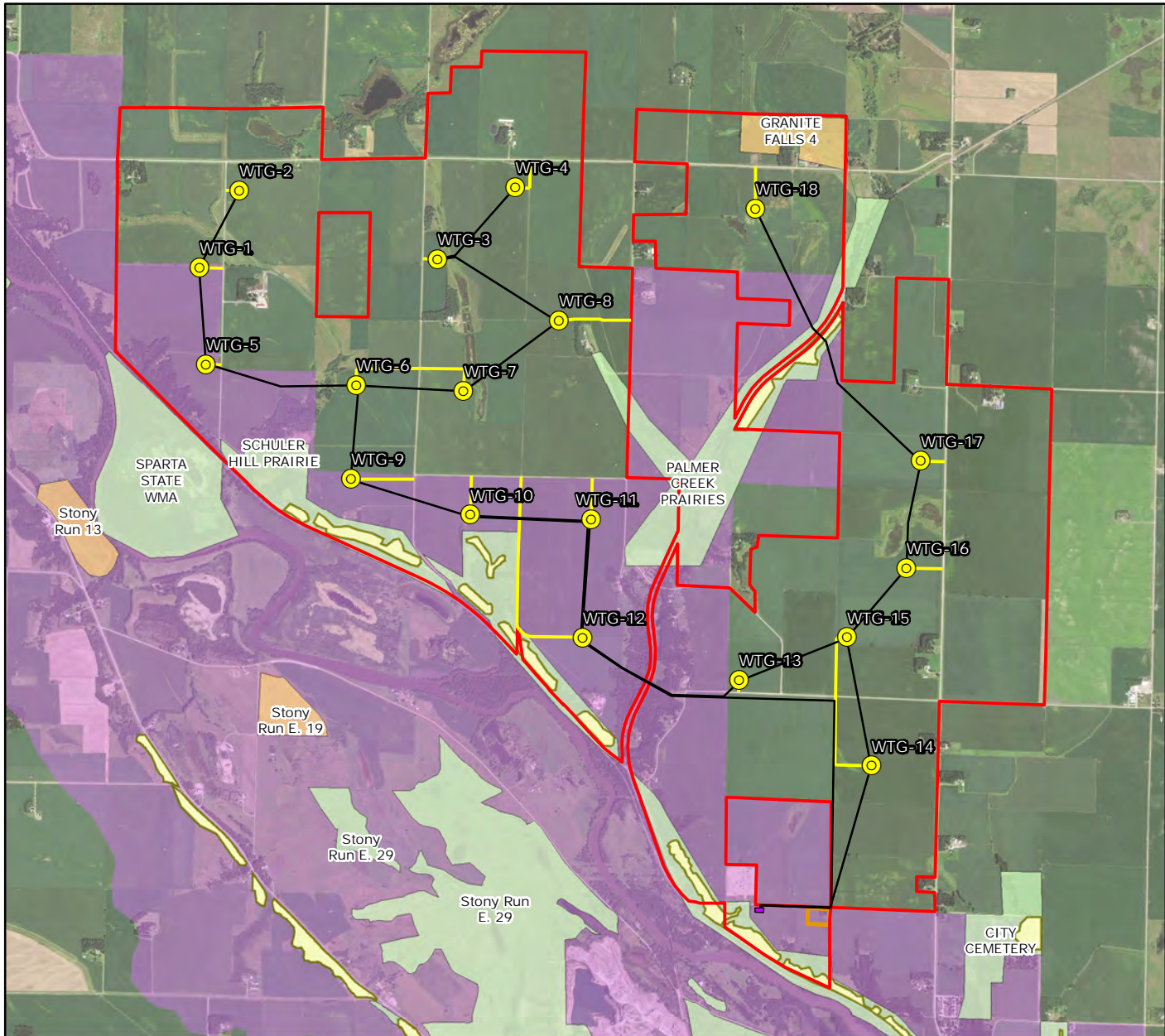


Responsive partner. Exceptional outcomes.

FEB 2017

Figure 9

Path: L:\2725605\Palmer's Creek Wind Farm\09_Site\Permit_Application\MXD\Ecologically_Significant_Areas.mxd



Legend

- Project
- Turbine Locations
- Access Roads
- Collector Lines
- Proposed Substation
- O&M Building and Laydown Area
- Upper Minn. R. Valley Prairie Corridor Restoration Plan

DNR Prairie Native Plant Communities

- Upland Prairie
- Wetland Prairie
- Complex community

MBS Sites of Biodiversity Significance

- Outstanding
- High
- Moderate
- Below

Note:
Project features are approximate. Once final design is completed, area will be surveyed prior to construction for Project feature placement.

N

4,000 2,000 0 4,000

Feet

Date: 2/9/2017 Time: 2:29:11 PM User: ShuJC0243

PALMER'S CREEK WIND FARM, LLC
Ecologically Significant Areas



FEB 2017
Figure 10