

# Appendix L

## Public Outreach Materials

**THIS PAGE INTENTIONALLY BLANK**

## Postcard

Dairyland Power Cooperative  
3200 East Avenue South  
P.O. Box 817  
La Crosse, WI 54602

# Wabasha Relocation Project

Join us at our upcoming open house – in person, or online. We need your feedback on relocation of transmission lines in your area. Your feedback will inform the route development process.



### WE WANT TO HEAR FROM YOU

Call: 608-791-2993

Visit: [www.dairylandpower.com/wabasha-relocation-project](http://www.dairylandpower.com/wabasha-relocation-project)

Email: [connect@dairylandtransmissionproject.com](mailto:connect@dairylandtransmissionproject.com)



October 2023

## LEARN MORE ABOUT THE WABASHA RELOCATION PROJECT



### Learn more.

Call: 608-791-2993

Visit: [www.dairylandpower.com/wabasha-relocation-project](http://www.dairylandpower.com/wabasha-relocation-project)

Email: [connect@dairylandtransmissionproject.com](mailto:connect@dairylandtransmissionproject.com)

The Wabasha Relocation Project will relocate an existing electric transmission line that serves a critical role in providing reliable electric service to homes and businesses in southeast Minnesota.

As a critical services provider, Dairyland Power Cooperative is relocating this existing transmission line on a new right-of-way.

## PUBLIC OPEN HOUSES

Join us for in-person or virtual open houses to learn more and provide your feedback.



### In-person open houses:

Thursday, November 9,

11 am-1pm **OR** 4-6pm

Self-guided online open house available starting November 2.

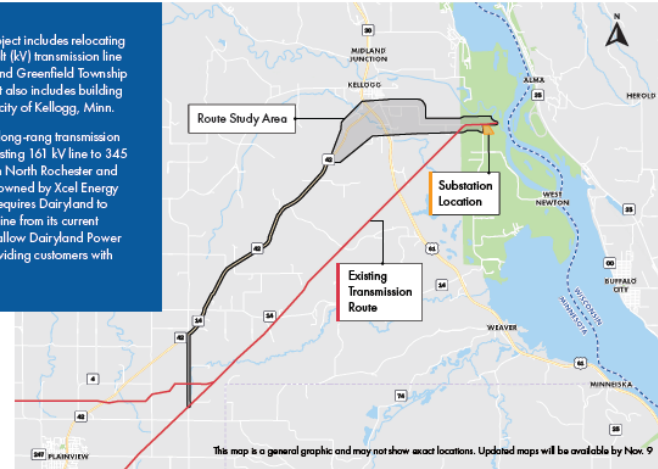
Additional details and a project map are inside this postcard.



## LEARN MORE ABOUT THE WABASHA RELOCATION PROJECT

The Wabasha Relocation Project includes relocating about 14 miles of 161-kilovolt (kV) transmission line between Plainview, Minn., and Greenfield Township in Wabasha County, Minn. It also includes building a new substation east of the city of Kellogg, Minn.

In 2020, MISO identified a long-range transmission project that upgrades the existing 161 kV line to 345 kV along a corridor between North Rochester and Alma. The new 345 kV line, owned by Xcel Energy and other project partners, requires Dairyland to relocate the existing 161 kV line from its current location. The new route will allow Dairyland Power Cooperative to continue providing customers with reliable and resilient energy.



## OPEN HOUSE SCHEDULE



Join us in-person  
Thursday, November 9, 2023

11 am-1pm **OR** 4-6pm

Saint Agnes Catholic Church  
125 W. Glasgow Ave.  
Kellogg, MN 55945



Join us online  
Nov. 2 through Nov. 23

Self-guided online open house,  
[www.dairylandpower.com/wabasha-relocation-project](http://www.dairylandpower.com/wabasha-relocation-project)

Provide feedback and learn more:

- Visit: [www.dairylandpower.com/wabasha-relocation-project](http://www.dairylandpower.com/wabasha-relocation-project)
- Call: 608-791-2993
- Email: [connect@dairylandtransmissionproject.com](mailto:connect@dairylandtransmissionproject.com)

## PROJECT TIMELINE

We currently anticipate the following schedule during project development. Stay up to date on any changes to the timeline at [www.dairylandpower.com/wabasha-relocation-project](http://www.dairylandpower.com/wabasha-relocation-project).

\* Schedule is subject to change.

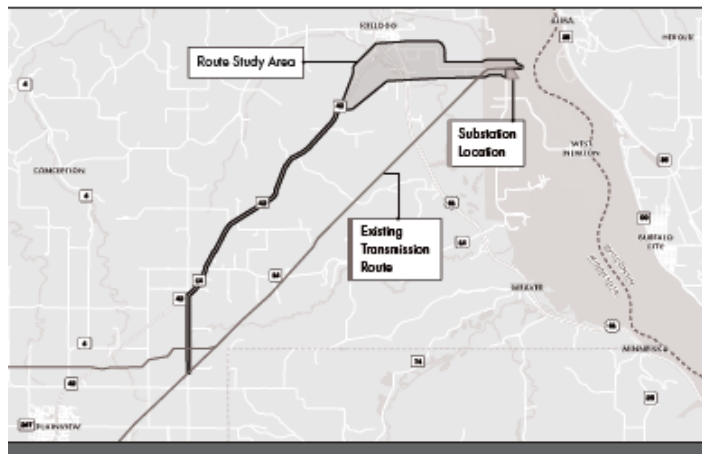
2022	2023	2024 – 2025	2026 – 2027	2028
Project identified by MISO	<ul style="list-style-type: none"> <li>Begin route development process</li> <li>Public and stakeholder outreach</li> <li>Preliminary engineering</li> </ul>	<ul style="list-style-type: none"> <li>Submit Route Permit Application (RPA)</li> <li>Land surveying and design</li> <li>Working with landowners to purchase easements</li> <li>Acquire additional permits</li> </ul>	Construction	In-service and project area restoration

## Newspaper Ad

# Wabasha Relocation Project



The Wabasha Relocation Project includes relocating about 14 miles of 161 kilovolt (kV) transmission line between Plainview, Minn., and Greenfield Township in Wabasha County, Minn. It also includes building a new substation east of the city of Kellogg, Minn.



Join us at our upcoming open house—in person, or online to learn more and provide your feedback on relocation of transmission lines in your area. Your feedback will inform the route development process.

### IN-PERSON PUBLIC OPEN HOUSE



Thursday,  
November 9, 2023  
11 am-1 pm OR 4-6 pm

📍 Saint Agnes Catholic Church  
115 W. Belvidere Ave.  
Kellogg, MN 55945

### SELF-GUIDED ONLINE OPEN HOUSE



Available anytime  
Nov. 2 – Nov. 23



Scan the code or visit:  
[dairylandpower.com/  
wabasha-relocation-project](https://dairylandpower.com/wabasha-relocation-project)

### FOR MORE INFORMATION

🌐 [www.dairylandpower.com/wabasha-relocation-project](https://www.dairylandpower.com/wabasha-relocation-project)  
✉ [connect@dairylandtransmissionproject.com](mailto:connect@dairylandtransmissionproject.com)  
☎ 608-791-2993

## Stakeholder Letter



3200 East Avenue South  
P.O. Box 817  
La Crosse, WI 54602

October 19, 2023

NAME  
TITLE  
ORGANIZATION  
ADDRESS  
CITY, STATE, ZIP CODE

### RE: Wabasha Relocation Project – Upcoming Engagement Opportunities

Hello [name],

Dairyland Power Cooperative is proposing to relocate about 14 miles of transmission line between Plainview, Minn., and Greenfield Township in Wabasha County, Minn. The Wabasha Relocation Project will relocate an existing electric transmission line that serves a critical role in providing reliable electric service to homes and businesses in southeast Minnesota. You are invited to participate in an open house to share your feedback on the project and proposed route.

#### About the Project

The Wabasha Relocation Project includes relocating about 14 miles of 161-kilovolt (kV) transmission line between Plainview, Minn., and Greenfield Township in Wabasha County, Minn. It also includes building a new substation east of the city of Kellogg, Minn.

In 2020, MISO identified a long-range transmission project that upgrades the existing 161 kV line to 345 kV along a corridor between North Rochester and Alma. The new 345 kV line, owned by Xcel Energy and other project partners, requires Dairyland to relocate the existing 161 kV line from its current location on a new right-of-way. The new route will allow Dairyland Power Cooperative to continue providing customers with reliable and resilient energy.

#### Open Houses – In Person and Online

Dairyland Power Cooperative is currently gathering information in preparation for filing its route permit application with the Minnesota Public Utilities Commission (PUC), planned for early Winter 2024. Join us for in-person or online open houses to learn more about the project and share your insights:

- **Date:** Thursday, November 9
- **Time:** 11 am-1 pm or 4-6 pm
- **Location:** Saint Agnes Catholic Church (115 W. Belvidere Ave., Kellogg, MN 55945)

There will be no formal presentation. The same information will be on display at both open houses for participants to review at their own pace, and staff will be available to answer questions. Refreshments will be served.

At your convenience, a self-guided online open house will also be available from Nov. 2 through Nov. 23 at [www.dairylandpower.com/wabasha-relocation-project](http://www.dairylandpower.com/wabasha-relocation-project). This website will have all of the information available at the in-person open house along with opportunities to provide feedback online.

You can also share your feedback in other ways:

- Visit: [www.dairylandpower.com/wabasha-relocation-project](http://www.dairylandpower.com/wabasha-relocation-project)
- Email: [Connect@DairylandTransmissionProject.com](mailto:Connect@DairylandTransmissionProject.com)
- Call: [608-791-2993](tel:608-791-2993)

All comments received from the in-person and online open houses will be factored into our proposed route.

**At your convenience, please RSVP if you are planning to attend the in-person open house by November 8 at [Connect@DairylandTransmissionProject.com](mailto:Connect@DairylandTransmissionProject.com) with your name, contact information and the meeting time that best aligns with your schedule.** Refreshments will be served, so please let us know in your RSVP if you have food allergies or restrictions. You can also contact us at 608-791-2993.

Sincerely,

[signature]

Sage Williams  
Manager – Transmission Operations and Development  
Dairyland Power Cooperative

## Stakeholder Email

### Dairyland L RTP 4 Stakeholder Email Notice

**Subject: You're Invited! Wabasha Relocation Project – Upcoming Open Houses**

#### WABASHA RELOCATION PROJECT

Greetings,

You're invited to participate in an open house to share your feedback on a proposed transmission line relocation project in your area. This project will allow Dairyland Power Cooperative to continue providing reliable electric service to homes and businesses in southeast Minnesota.

#### About the Project

The Wabasha Relocation Project includes relocating about 14 miles of 161-kilovolt (kV) transmission line between Plainview, Minn., and Greenfield Township in Wabasha County, Minn. It also includes building a new substation east of the city of Kellogg, Minn.

#### In-Person Open House

We are currently gathering information in preparation for filing our route permit application with the Minnesota Public Utilities Commission (PUC), planned for early Winter 2024. Join us for in-person or online open houses to learn more about the project and share your insights:

- **Date:** Thursday, November 9
- **Time:** 11 am-1 pm or 4-6 pm
- **Location:** Saint Agnes Catholic Church (115 W. Belvidere Ave., Kellogg, MN 55945) - [view map](#)

There will be no formal presentation. The same information will be on display at both open houses for participants to review at their own pace, and staff will be available to answer questions.

\*\*RSVP by November 8 at [Connect@DairylandTransmissionProject.com](mailto:Connect@DairylandTransmissionProject.com) with your name, contact information and the meeting time that best aligns with your schedule. Refreshments will be served, so please let us know in your RSVP if you have food allergies or [restrictions](#).\*\*

#### Online Open House

At your convenience, a self-guided online open house will also be available from Nov. 2 through Nov. 23 at [www.dairylandpower.com/wabasha-relocation-project](http://www.dairylandpower.com/wabasha-relocation-project).

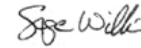
All comments received from the in-person and online open houses will be considered in the route development process.

#### Contact Us

Visit: [www.dairylandpower.com/wabasha-relocation-project](http://www.dairylandpower.com/wabasha-relocation-project)

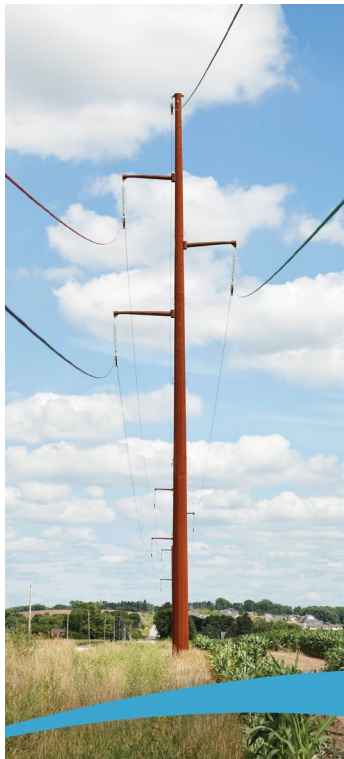
Email: [Connect@DairylandTransmissionProject.com](mailto:Connect@DairylandTransmissionProject.com)

Call: [608-791-2993](tel:608-791-2993)



Sage Williams  
Manager – Transmission Operations and Development  
Dairyland Power Cooperative

## Social Media Posts



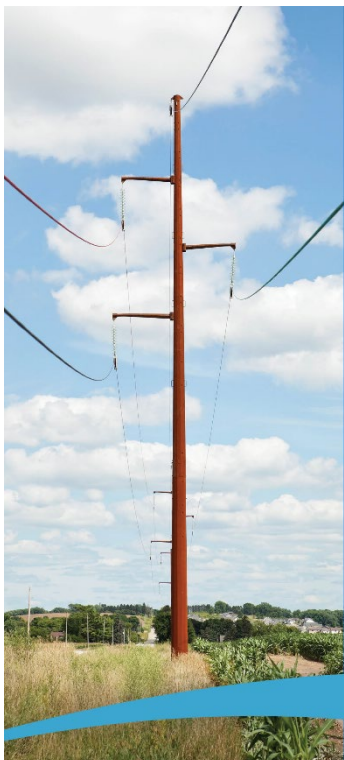
**Wabasha  
Relocation Project**

JOIN US IN PERSON:


**Nov. 9**  
11 am-1 pm  
or 4-6 pm

OR ONLINE:

**Nov. 2 – 23**



**Wabasha  
Relocation Project**



**Online  
engagement  
available**

THROUGH NOV. 23

## Agency and Tribal Letter



December 18, 2023

NAME  
AGENCY  
ADDRESS  
EMAIL

Re: **In the Matter of the Application of Dairyland Power Cooperative to Relocate an Existing 161-kV Transmission Line in Wabasha County, Minnesota  
MPUC Docket Nos. ET3/CN-23-504 and ET3/TL23-388**

Dear NAME:

Dairyland Power Cooperative (Dairyland) is proposing to relocate approximately 13.3 miles of 161-kilovolt (kV) high voltage transmission line (HVTL) and construct a new substation in Wabasha County, Minnesota (the Wabasha Relocation Project, or the Project). The Project starts in Plainview Township, northeast of the Town of Plainview, and traverses northeast through Highland, Watopa, and Greenfield Townships, ending east of the City of Kellogg near the Mississippi River.

The Project is a reroute of approximately 10.4 miles of the existing Dairyland LQ34 161-kV transmission line which is presently located on the existing CapX2020 Hampton-Rochester-LaCrosse 345-kV structures. In July 2020, the Midwest Independent System Operator (MISO) approved a long-range transmission portfolio including a new Wilmarth-North Rochester-Tremval transmission line. This new 345-kV line would utilize the double circuit capability of the CapX2020 system between North Rochester and Alma, Wisconsin. Therefore, Dairyland's existing 161-kV transmission line must be removed from the existing CapX2020 structures and relocated to make room for the new 345-kV circuit on the CapX2020 structures.

The Project would involve installation of 70- to 110-foot-high steel monopoles placed 400 to 800 feet apart within a 100-foot-wide right-of-way, and construction of a new substation east of the City of Kellogg, Minnesota. The enclosed Project Fact Sheet provides additional information on the Project, including a map of the Project area and proposed route.

Dairyland plans to file a joint Certificate of Need and Route Permit application (Application) with the Minnesota Public Utilities Commission (Commission) in March 2024. Dairyland would appreciate any input you may have on the Project and the proposed route. This letter, and any responses received, will be submitted along with Dairyland's Application. There will also be numerous public input opportunities as part of the Commission's Certificate of Need and Route Permit process.

We would welcome the opportunity to meet with you regarding the proposed Project. If you would like to request a meeting, please contact me at 608-791-2993 or [Sage.Williams@Dairylandpower.com](mailto:Sage.Williams@Dairylandpower.com).<sup>1</sup> We also welcome written comments, and I am available to answer any questions you have.

Sincerely,

DAIRYLAND POWER COOPERATIVE

A handwritten signature in black ink that reads "Sage Williams".

Sage Williams  
Manager, Transmission Operations and Development

Encl: Project Fact Sheet

<sup>1</sup> This letter is intended to serve as notice of the opportunity for a pre-application consultation meeting under Minn. Stat. § 216E.03, subd. 3a.





Dairyland Power Cooperative  
Manager, Transmission Operations and Development  
3200 East Avenue South  
P.O. Box 817  
La Crosse, WI 54602-0817

## Wabasha Relocation Project

### Project Overview

Dairyland Power Cooperative (Dairyland) is proposing to relocate approximately 13.3 miles of 161-kilovolt (kV) high voltage transmission line (HVTL) in Wabasha County (the Project). The Project will make room for a second 345-kV circuit to be attached to the existing CapX Hampton-Rochester-LaCrosse (CapX) structures, which extend diagonally northeast from the Town of Plainview to the City of Kellogg, Minnesota. The Project will allow Dairyland to maintain its transmission system, supply the Wabaco Substation, and provide power to the Town of Plainview and neighboring areas. Once the 161-kV transmission line has been relocated to the new right of way, the existing transmission circuit located on the CapX 2020 345-kV structures will be transferred to Xcel Energy. Structures would consist of 70- to 110-foot steel monopoles with spans of 400 to 800 feet apart. Dairyland will seek a 100-foot-wide right-of-way – 50 feet on each side of the centerline.

This Project also includes the construction of a new substation proposed near the City of Kellogg. This substation is required because the new CapX 345-kV circuit across the Mississippi River will eliminate Dairyland's existing 69-kV transmission line crossing and connection to the Alma Station in Wisconsin. The new Kellogg Substation will supply power to Dairyland's existing north-south 69-kV transmission line supplying the Weaver Substation, which provides power to communities within the southeast Minnesota area.

### Permitting and Public Involvement

Dairyland plans to submit a Certificate of Need and Route Permit Application to the Minnesota Public Utilities Commission (Commission) in March 2024. During this process, the public and regulatory agencies will have several opportunities to review and provide input on the Project, including public meetings hosted by the Commission and the Department of Commerce Energy Environmental Review and Analysis (DOC-EERA). DOC-EERA will also prepare an environmental assessment for the Project that will be available for public review. Once the Commission issues a decision, Dairyland will finalize the Project route and obtain any additional permits needed from federal, state, and local agencies.

### Landowner Coordination and Easement Negotiation

After Dairyland submits the Certificate of Need and Route Permit application to the Commission, a representative from Dairyland will contact property owners to discuss access to the Proposed Route and the process for acquisition of easements. Dairyland will continue to engage with landowners throughout the permitting process to answer any questions they may have regarding the easement process or the Project, including those with respect to construction or operation of the transmission line.

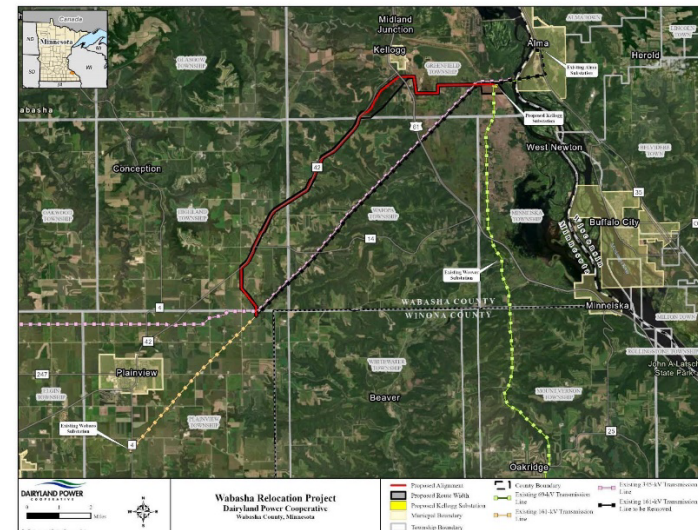
### About Dairyland

Dairyland is a Touchstone Energy Cooperative formed in December 1941 and based in La Crosse, Wisconsin. Dairyland provides wholesale electrical requirements to more than 700,000 people through its 24 distribution cooperatives and 27 municipals in a four-state area including Wisconsin, Minnesota, Iowa, and Illinois.



Dairyland Power Cooperative  
Manager, Transmission Operations and Development  
3200 East Avenue South  
P.O. Box 817  
La Crosse, WI 54602-0817

Project Schedule	
Timeframe	Project Phase/Activity
November 2023	Notifications and Open Houses
Winter 2024 – Summer 2025	Certificate of Need and Route Permit
Summer/Fall 2025	Survey/Design
Winter 2025 – Fall 2025	Easements/Additional Permits
Spring 2026 – Summer 2027	Construction
Summer 2028	Energization



Dairyland Representatives	
<b>Jessica Sandry</b>	<b>Sage Williams</b>
Jessica Sandry, Real Estate and Right-of-Way	Project Manager, Transmission Operations and Development
608-792-3359	608-791-2993
<a href="mailto:Jessica.Sandry@DairylandPower.com">Jessica.Sandry@DairylandPower.com</a>	<a href="mailto:Sage.Williams@DairylandPower.com">Sage.Williams@DairylandPower.com</a>