

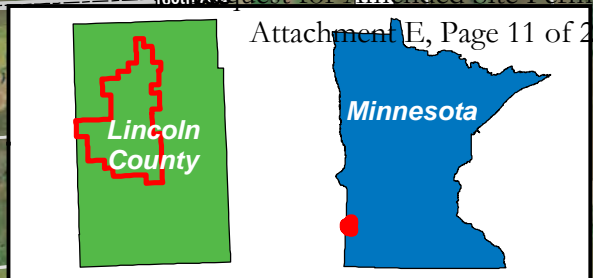
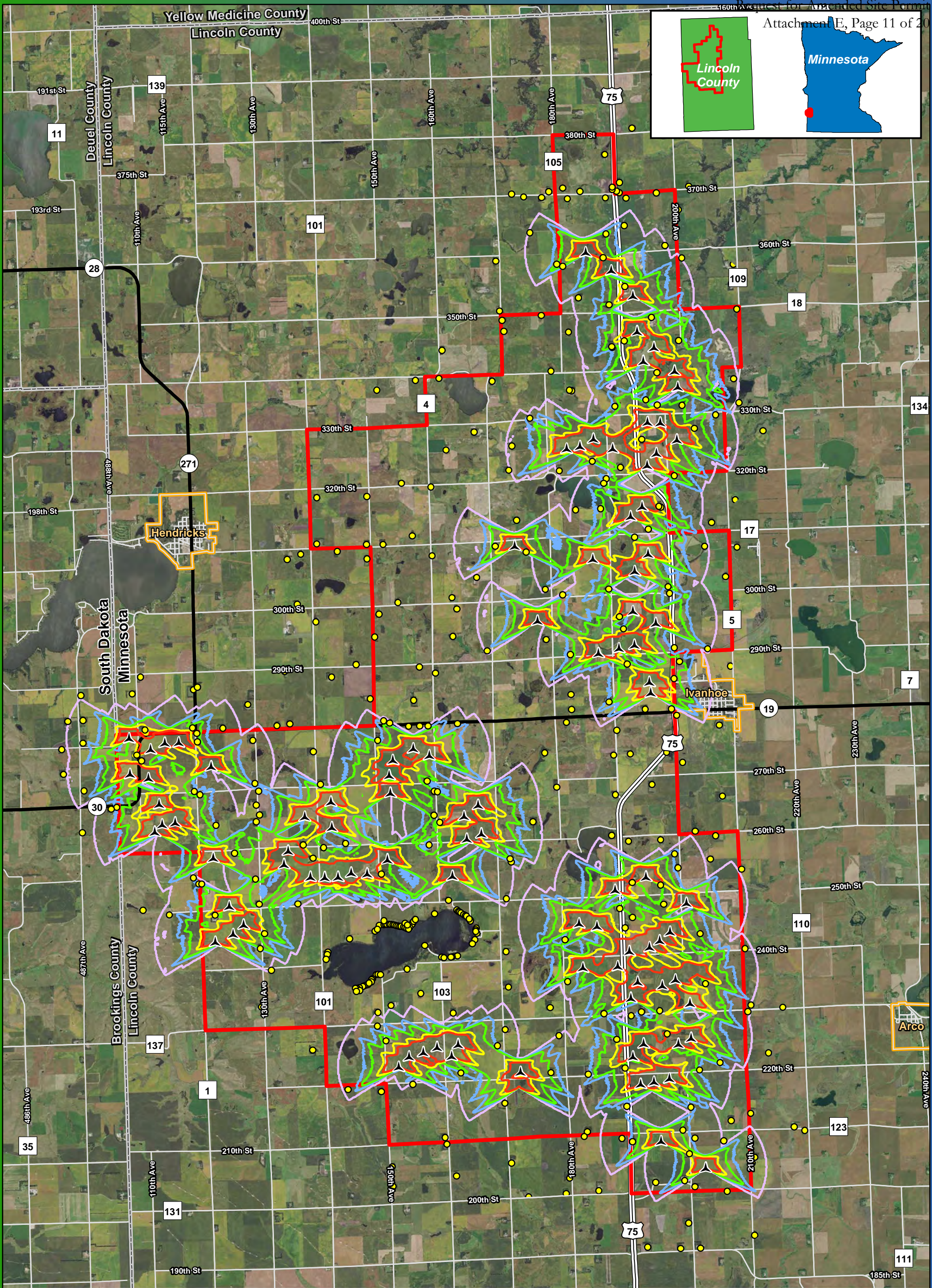
Service Layer Credits: Copyright: © 2013 National Geographic Society, i-cubed  
Data Source: Geronimo Energy, USGS, Census

**Figure 9**  
**Topographic Map**  
**Vestas V110/V120**

**Blazing Star Wind Farm 2**  
**Lincoln County, MN**

**44.460125, -96.336861**

- Preliminary Turbine Location
- Alternate Turbine Location
- Project Area Boundary
- County Boundary
- City/Township
- Project Substation
- Access Road
- Alternate Access Road
- Collection Line
- Crane Path



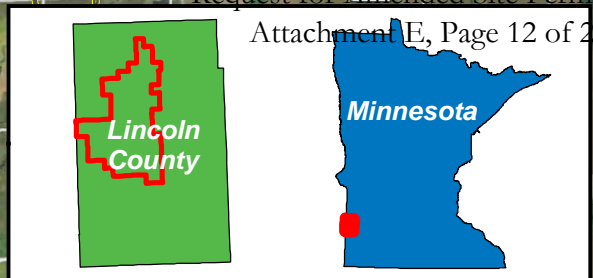
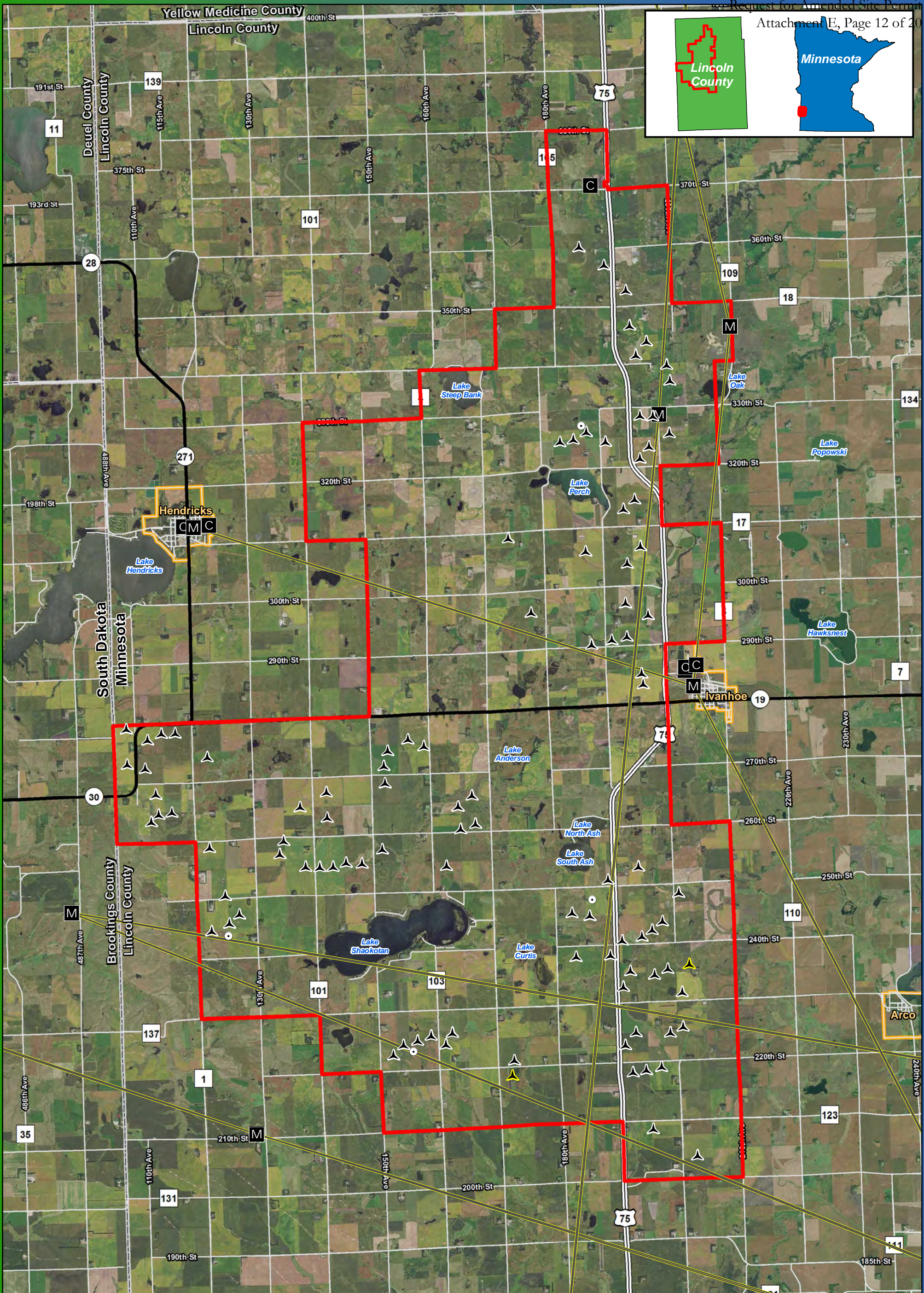
Lincoln County, MN

Imagery Source: 2015 Color FSA  
 Data Source: Geronimo Energy, MN DNR, Census, Lincoln Co.

**Figure 10**  
**Shadow Flicker**  
**Vestas V110/V120**  
**Blazing Star Wind Farm 2**  
**Lincoln County, MN**

44.460125, -96.336861

- |  |                              |
|--|------------------------------|
| ▲ Preliminary Turbine Location   | <b>Shadow Hours Per Year</b> |
| ▲ Alternate Turbine Location   | — 0                          |
| ● Residential Structures within 1 Mile (excluding cities of Hendricks and Ivanhoe) | — 5                          |
| □ Project Area Boundary  | — 10                         |
|  | — 30                         |
|  | — 50                         |



**BLAZING STAR 2**  
WIND FARM  
Lincoln County, MN

0 0.75 1.5 3  
Miles

Imagery Source: 2015 Color FSA  
Data Source: Geronimo Energy, MN DNR, Census, Lincoln Co.

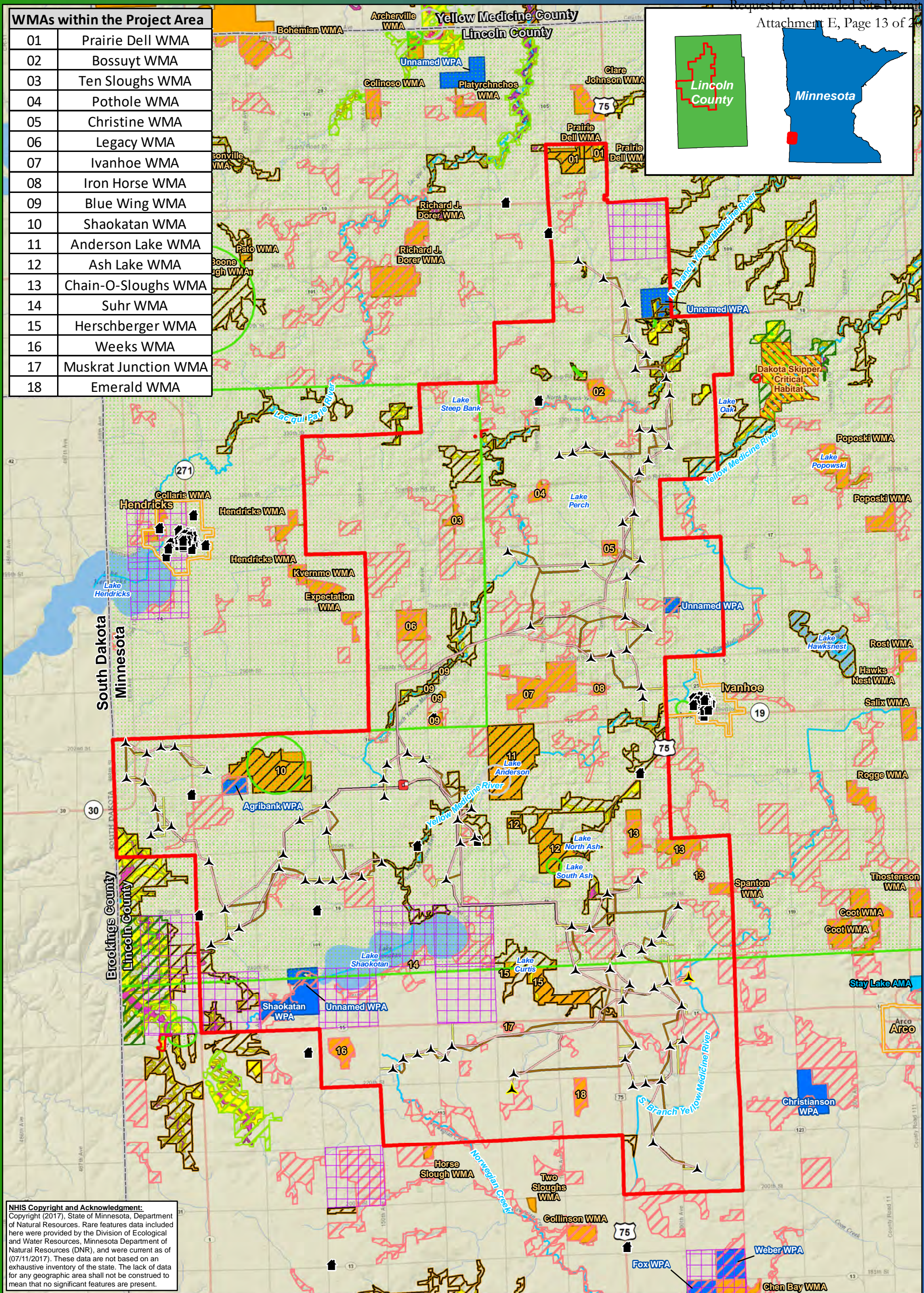
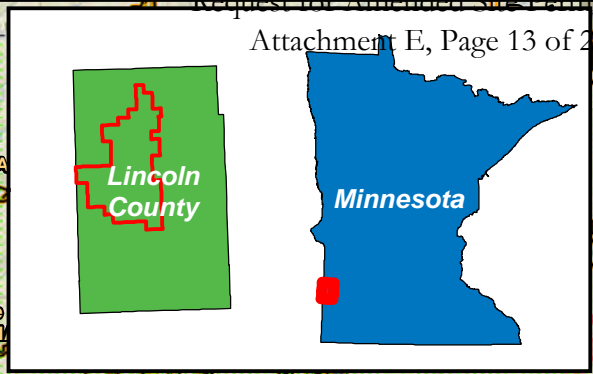
**Figure 11**  
**Microwave Beam Path**  
**Vestas V110/V120**

**Blazing Star Wind Farm 2**  
**Lincoln County, MN**

**44.460125, -96.336861**

- Preliminary Turbine Location
  - Alternate Turbine Location
  - Microwave Tower
  - Permanent Met Tower
  - Communication Tower
  - Microwave Beam Path (wcfz)
  - Project Area Boundary
  - County Boundary
- \*Turbines are not to scale  
\*There are no turbines in the Microwave Beam Path Worst Case Fresnel Zone

WMAs within the Project Area	
01	Prairie Dell WMA
02	Bossuyt WMA
03	Ten Sloughs WMA
04	Pothole WMA
05	Christine WMA
06	Legacy WMA
07	Ivanhoe WMA
08	Iron Horse WMA
09	Blue Wing WMA
10	Shaokatan WMA
11	Anderson Lake WMA
12	Ash Lake WMA
13	Chain-O-Sloughs WMA
14	Suhr WMA
15	Herschberger WMA
16	Weeks WMA
17	Muskrat Junction WMA
18	Emerald WMA



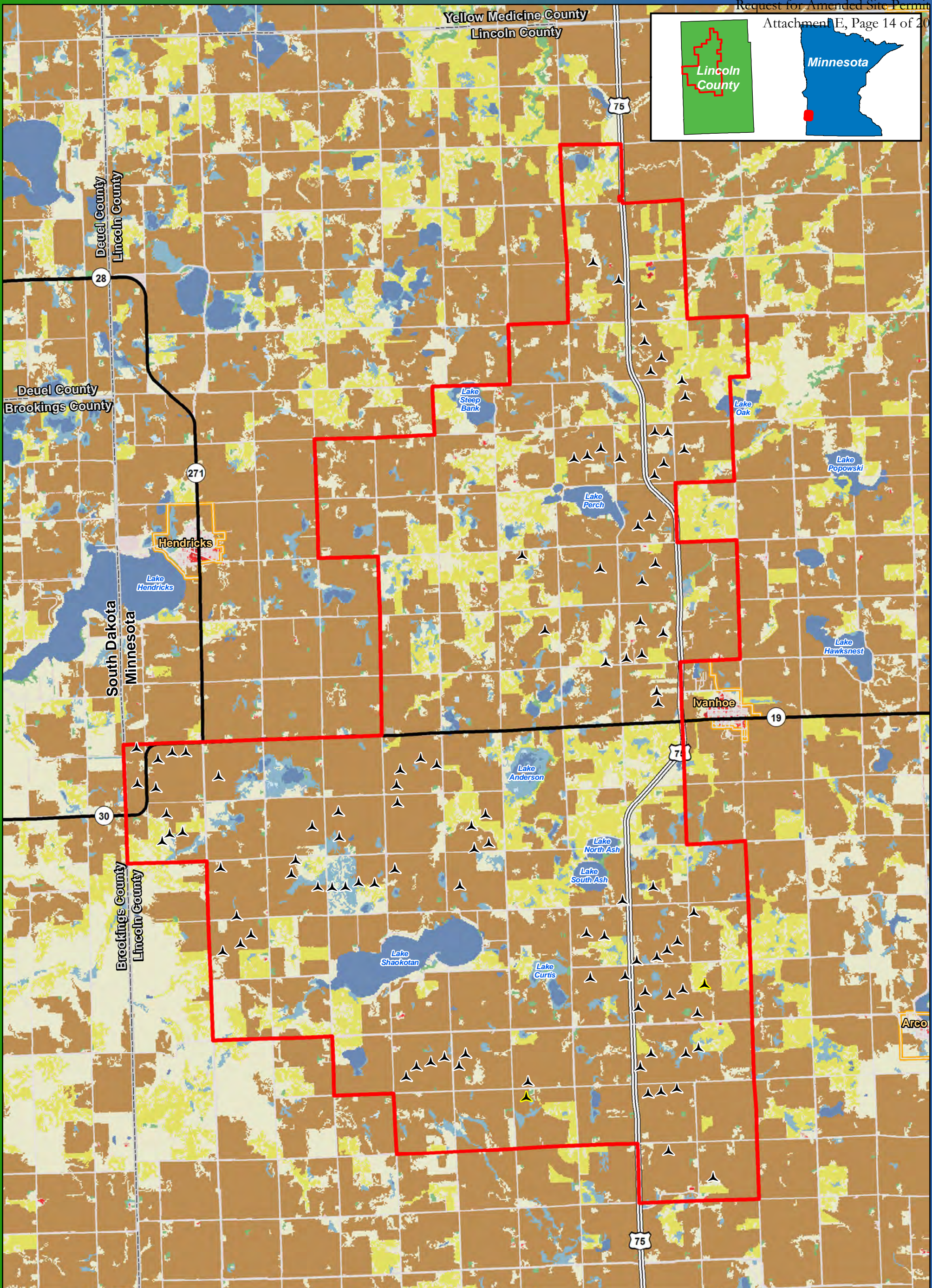
**NHIS Copyright and Acknowledgment:**  
 Copyright (2017), State of Minnesota, Department of Natural Resources. Rare features data included here were provided by the Division of Ecological and Water Resources, Minnesota Department of Natural Resources (DNR), and were current as of (07/11/2017). These data are not based on an exhaustive inventory of the state. The lack of data for any geographic area shall not be construed to mean that no significant features are present.

0 0.75 1.5 3  
Miles

Imagery Source: National Geographic World Map  
 Data Source: Geronimo Energy, MN DNR, USFWS, Mn Geo, MN SHPO

**Figure 12**  
**Unique Natural Features**  
**Vestas V110/V120**  
**Blazing Star Wind Farm 2**  
**Lincoln County, MN**  
 44.460125, -96.336861

- ▲ Preliminary Turbine Location
  - ▲ Alternate Turbine Location
  - ▭ Project Area Boundary
  - ▭ Project Substation
  - Access Road
  - Alternate Access Road
  - Collection Line
  - Crane Path
  - 24k Stream or Ditch
  - ▭ Architectural/Historic Resource
  - ▭ Archaeological Site in Section
  - ▭ Aquatic Management Area (AMA)
  - ▭ Waterfowl Production Area (WPA)
  - ▭ Wildlife Management Area (WMA)
  - ▭ USFWS Critical Habitat
  - ▭ Native Prairie
  - ▭ Native Plant Community
- Sites of Biodiversity Significance**
- ▭ Outstanding
  - ▭ High
  - ▭ Moderate
  - ▭ Below
- Natural Heritage Inventory System (NHIS)**
- ▭ Endangered
  - ▭ Special Concern
  - ▭ Watchlist
  - ▭ N/A



**BLAZING STAR 2  
WIND FARM**  
Lincoln County, MN

0 0.75 1.5 3  
Miles

Data Source: Geronimo Energy, USGS, Census

**Figure 13  
Land Cover  
Vestas V110/V120**

**Blazing Star Wind Farm 2  
Lincoln County, MN**

44.460125, -96.336861

- ▲ Preliminary Turbine Location
  - ▲ Alternate Turbine Location
  - ▭ Project Area Boundary
- NLCD Land Cover**
- Open Water
  - Developed, Open Space
  - Developed, Low Intensity
  - Developed, Medium Intensity
  - Developed, High Intensity
  - Barren Land
  - Deciduous Forest
  - Shrub/Scrub
  - Grassland/Herbaceous
  - Hay/Pasture
  - Cultivated Crops
  - Woody Wetlands
  - Emergent Herbaceous Wetlands