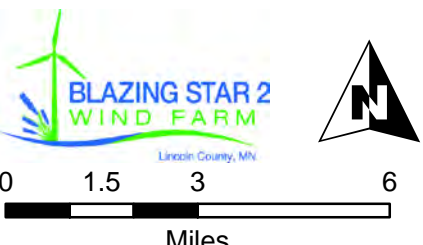
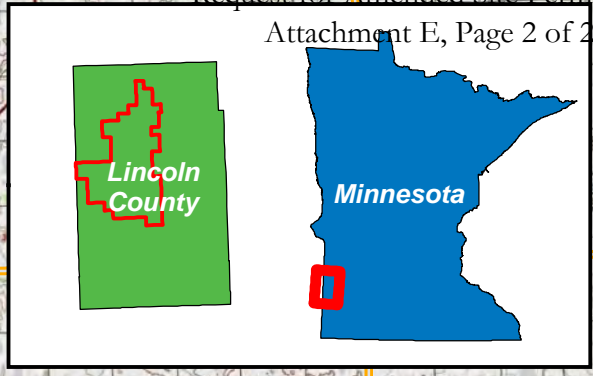
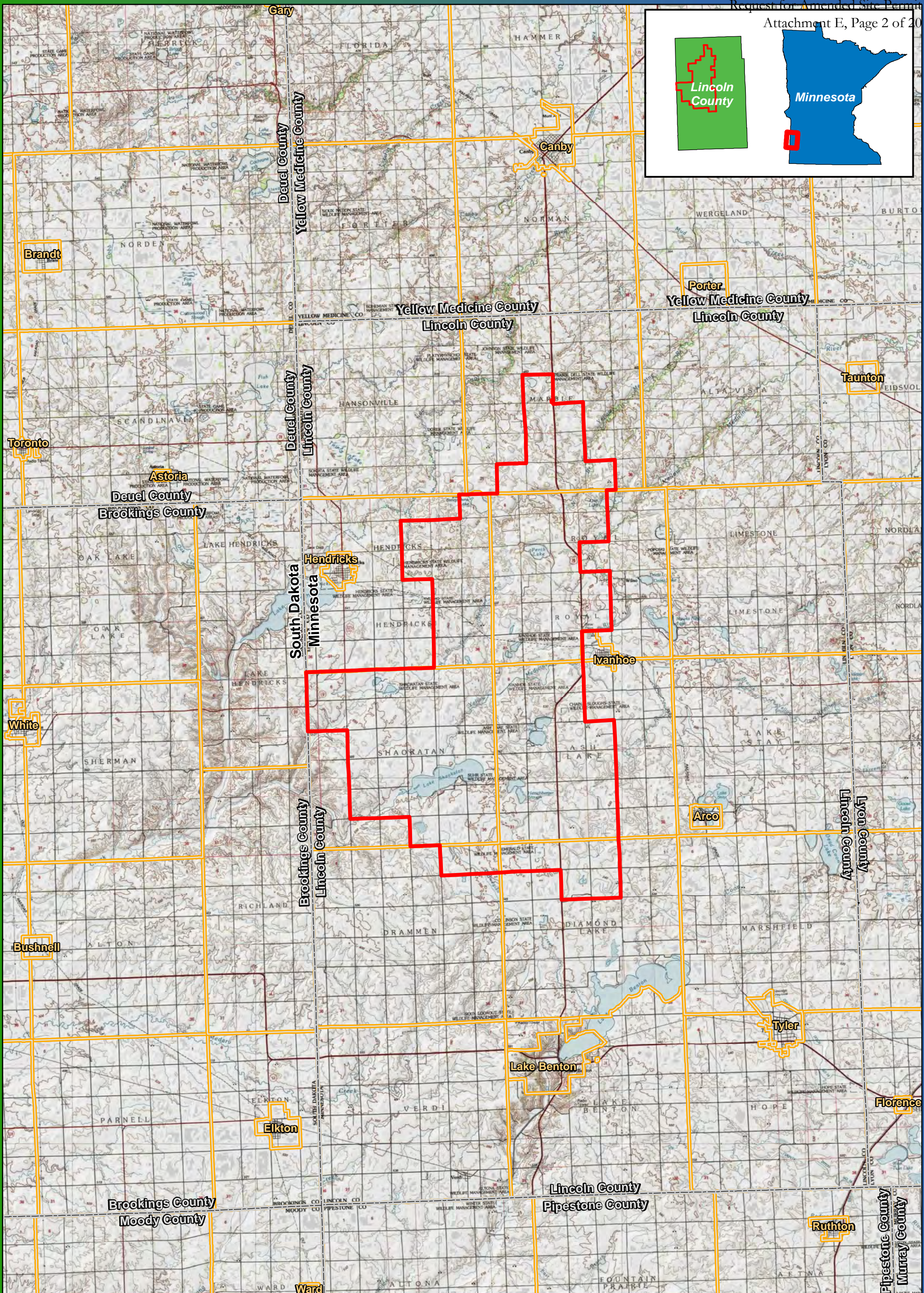


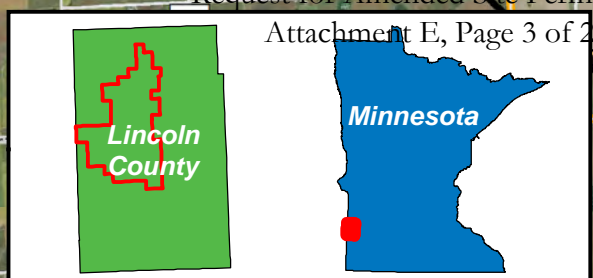
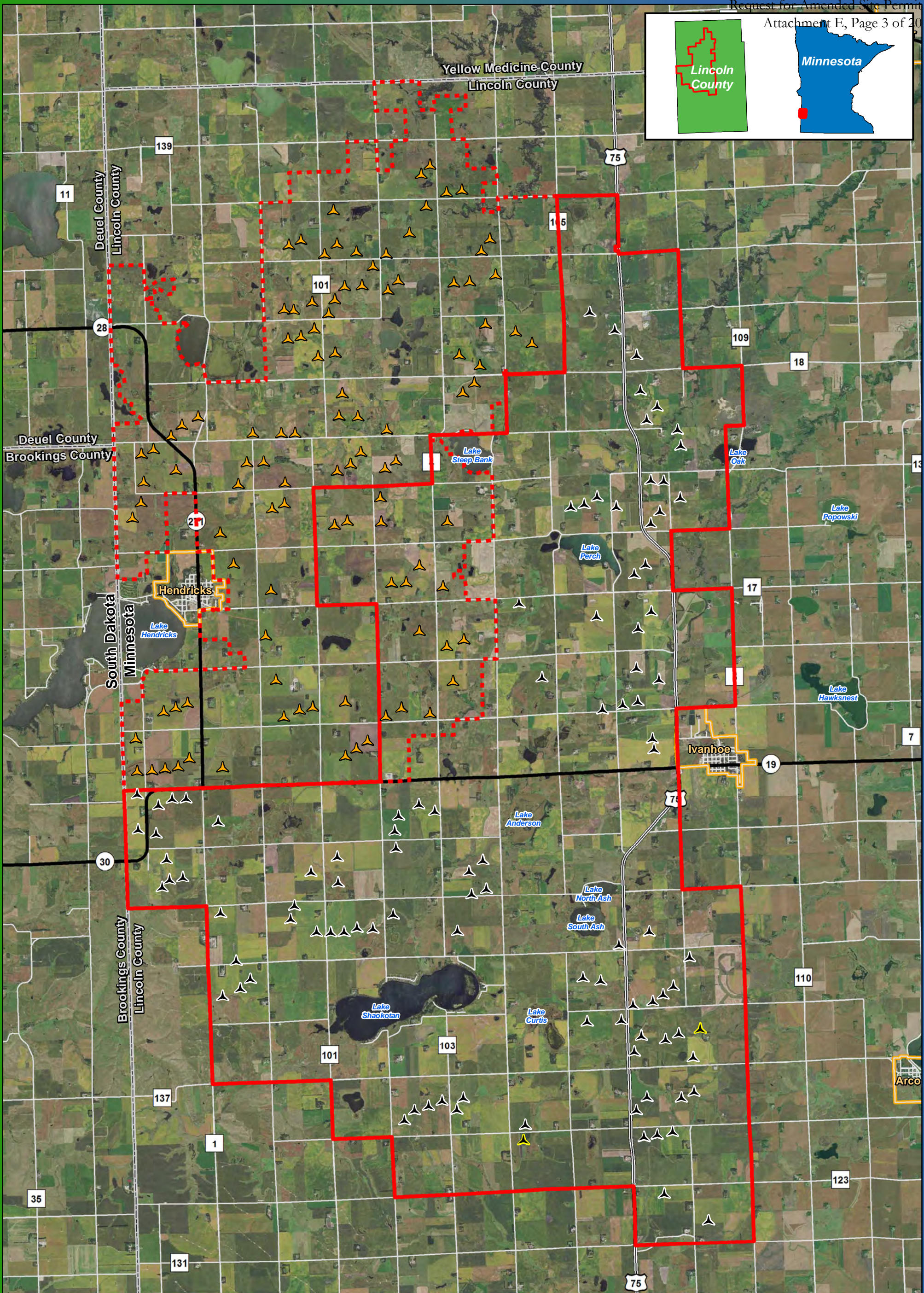
## **Attachment E – Updated Environmental Maps**



**Figure 1**  
**Project Location**  
**Blazing Star Wind Farm 2**  
**Lincoln County, MN**  
**44.460125, -96.336861**

- Project Area Boundary
- County Boundary
- City/Township

Data Source: Geronimo Energy, USGS  
 Service Layer Credits: Copyright © 2013 National Geographic Society, i-cubed



**BLAZING STAR 2**  
WIND FARM  
Lincoln County, MN

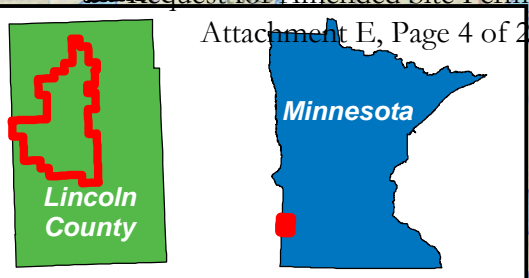
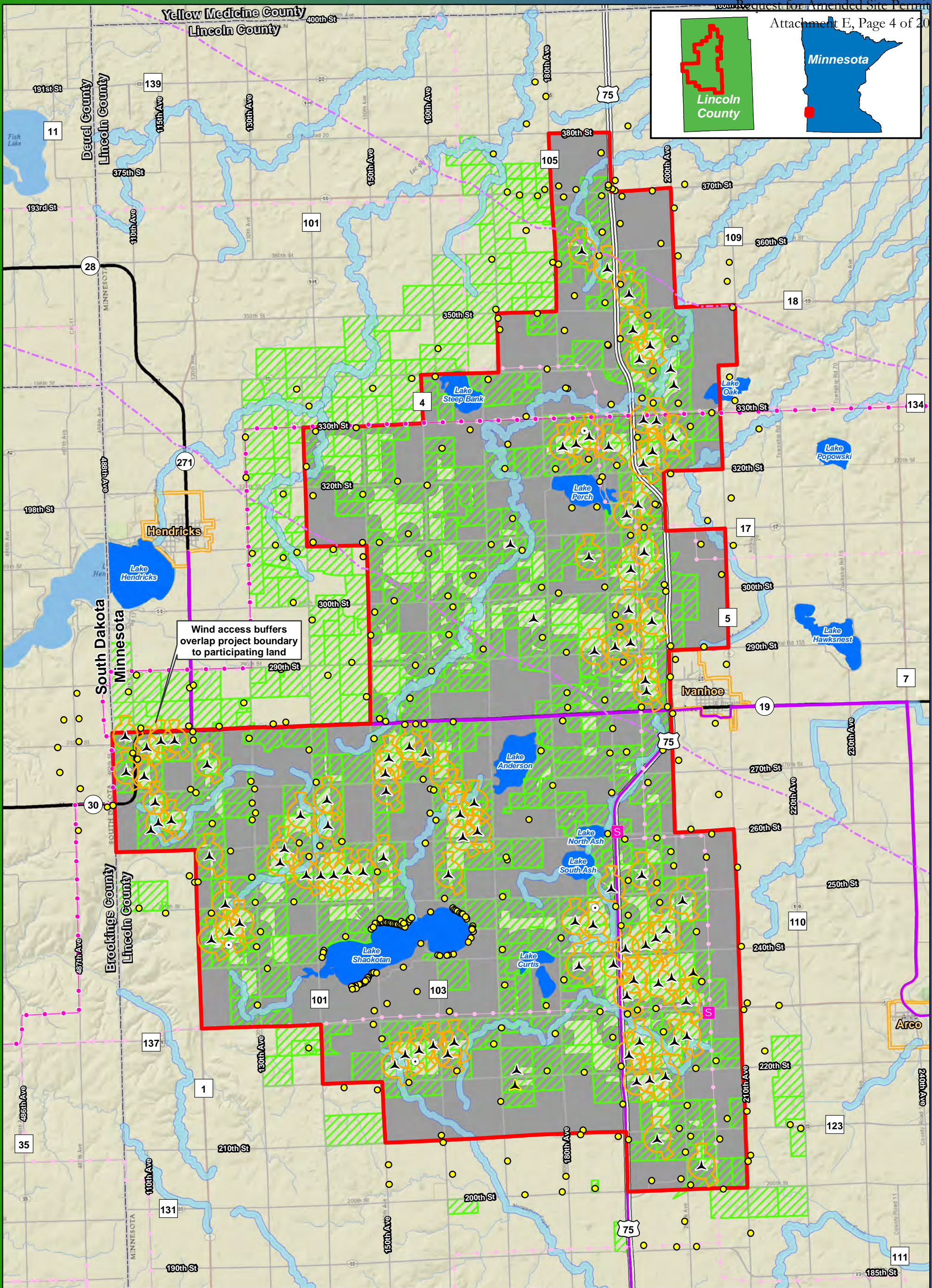
0 0.75 1.5 3  
Miles

Imagery Source: 2015 Color FSA  
Data Source: Geronimo Energy, MN DNR, USGS, Census

**Figure 2**  
**Blazing Star Project**  
**Comparison**  
**Vestas V110/V120**

**Blazing Star Wind Farm 2**  
**Lincoln County, MN**  
**44.460125, -96.336861**

- Blazing Star Permitted Turbine (V110/V120)
- Blazing Star 2 Preliminary Turbine Location
- Alternate Turbine Location
- Blazing Star Project Boundary
- Blazing Star 2 Project Boundary



Wind access buffers overlap project boundary to participating land

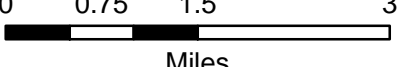
**Figure 3**  
**Turbine Layout and Constraints**  
**Vestas V110/V120**

**Blazing Star Wind Farm 2**  
**Lincoln County, MN**

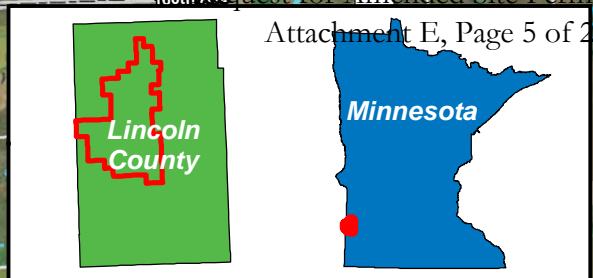
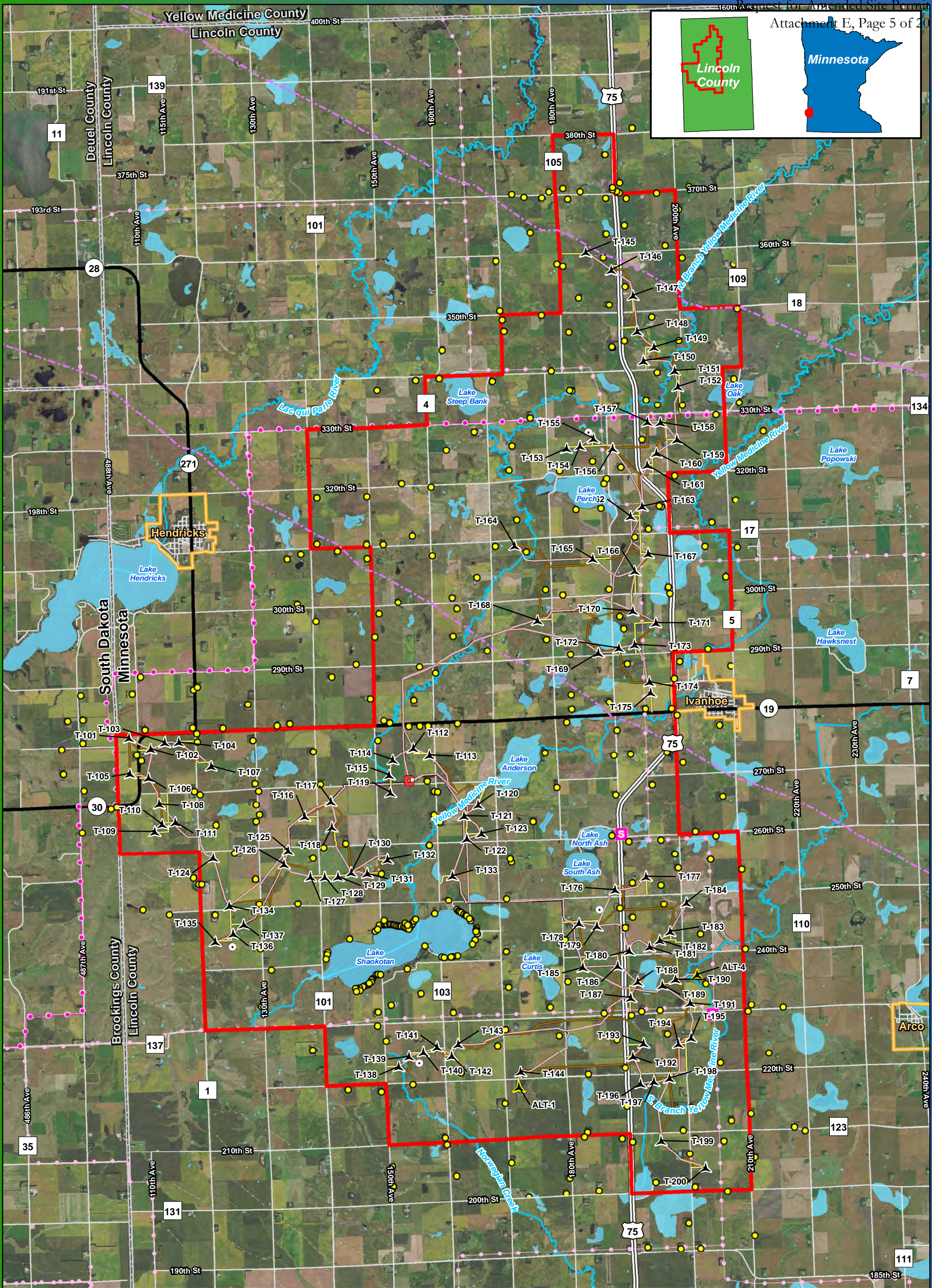
44.460125, -96.336861

- ▲ Preliminary Turbine Location
- ▲ Alternate Turbine Location
- Permanent Met Tower
- Residential Structures within 1 Mile (excluding cities of Hendricks and Ivanhoe)
- Project Area
- 3x5 Wind Access
- Setbacks
- Shoreland Management District
- Participants within 1 Mile
- Existing Substation
- Existing Transmission Line
- MVP 345kV Transmission Line
- Existing Pipeline
- Snowmobile Trail

\* Turbines are not to scale



Imagery Source: National Geographic World Map  
 Data Source: Geronimo Energy, MN DNR, Census, Lincoln Co.



**BLAZING STAR 2 WIND FARM**  
Lincoln County, MN

0 0.75 1.5 3  
Miles

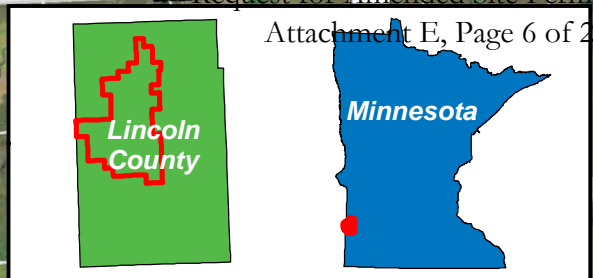
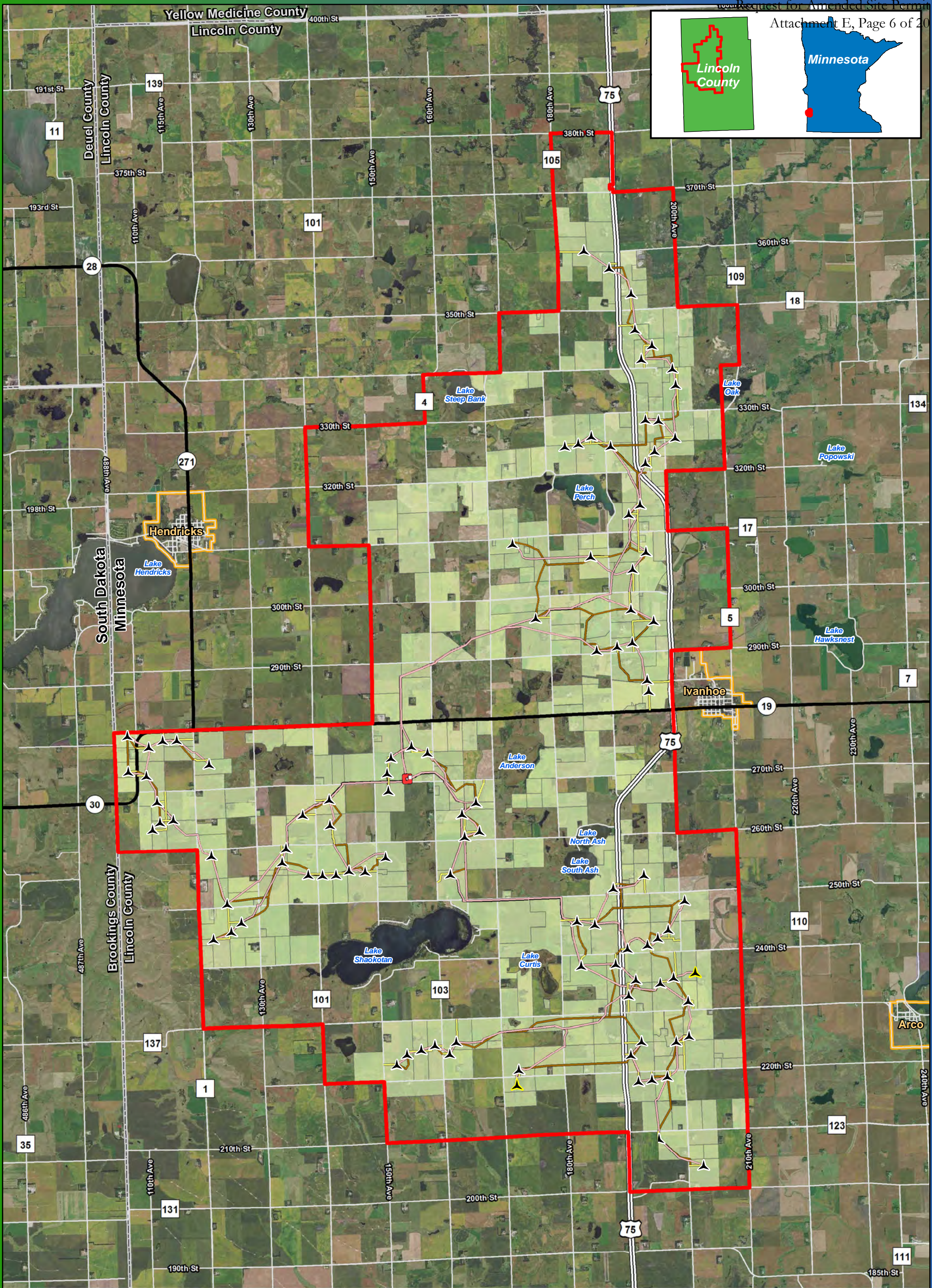
Imagery Source: 2015 Color FSA  
Data Source: Geronimo Energy, MN DNR, Census, Lincoln Co.

**Figure 4**  
**Project Area and Facilities**  
**Vestas V110/V120**

**Blazing Star Wind Farm 2**  
**Lincoln County, MN**

**44.460125, -96.336861**

- Preliminary Turbine Location
- Alternate Turbine Location
- Permanent Met Tower
- Residential Structures within 1 Mile (excluding cities of Hendricks and Ivanhoe)
- Project Area Boundary
- Access Road
- Alternate Access
- Collection Line
- Crane Path
- Project Substation
- 24k Stream or Ditch
- Lake, Pond or Reservoir
- Substation
- Existing Transmission Line
- MVP 345kV Transmission Line
- Existing Pipeline



Lincoln County, MN

0 0.75 1.5 3  
Miles

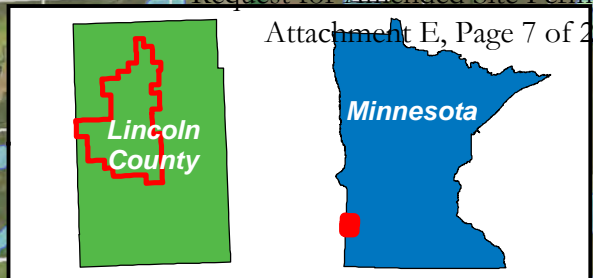
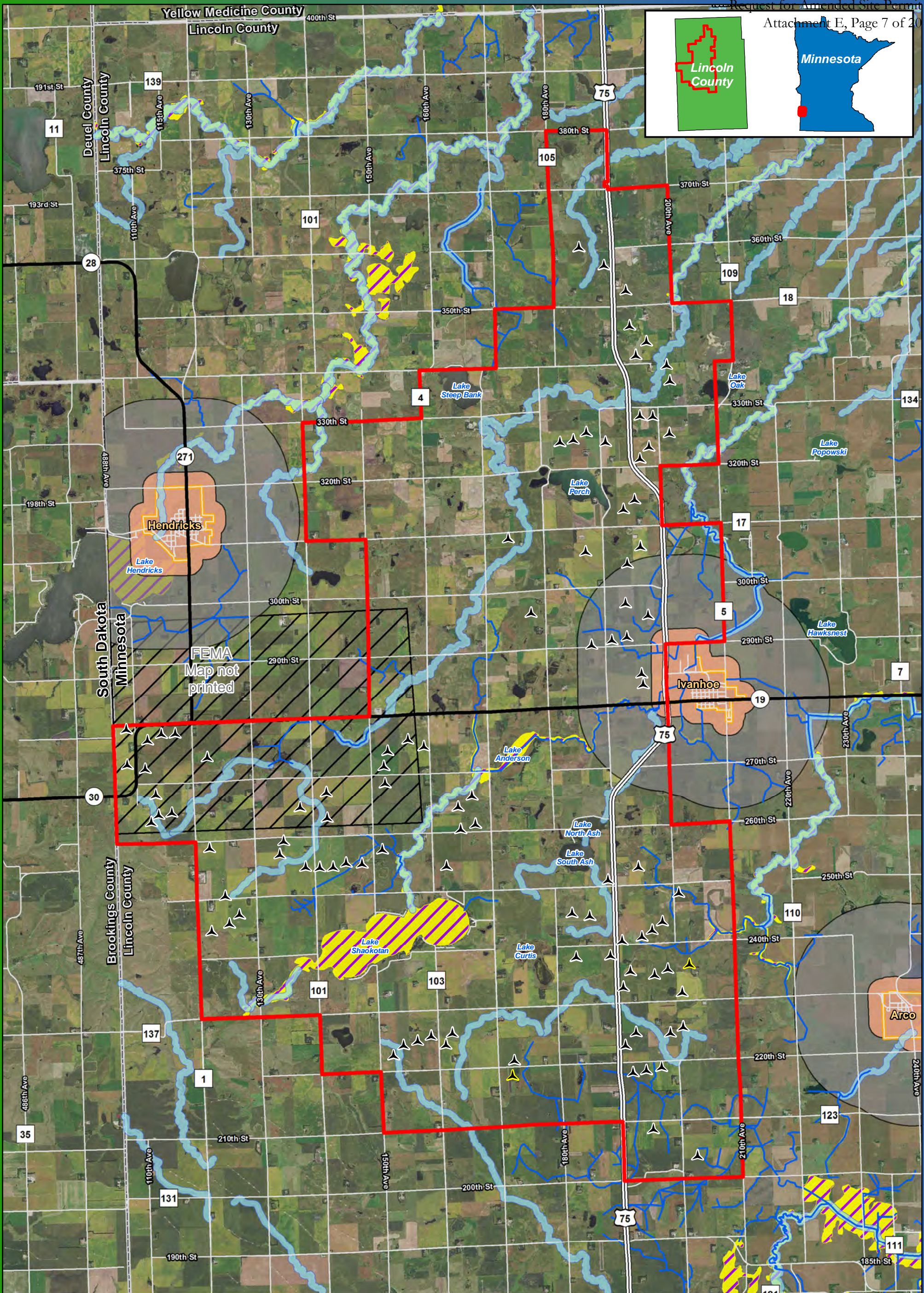
Imagery Source: 2015 Color FSA  
Data Source: Geronimo Energy, MN DNR, Census, Lincoln Co.

**Figure 5**  
**Land Ownership**  
**Vestas V110/V120**

**Blazing Star Wind Farm 2**  
**Lincoln County, MN**

**44.460125, -96.336861**

- |                                |                            |
|--------------------------------|----------------------------|
| ▲ Preliminary Turbine Location | <b>Site Control Status</b> |
| ▲ Alternate Turbine Location   | ■ Participants             |
| □ Project Area Boundary        | □ Non-Participant          |
| □ Project Substation           |                            |
| — Access Road                  |                            |
| - - - Alternate Access Road    |                            |
| — Collection Line              |                            |
| — Crane Path                   |                            |



**BLAZING STAR 2**  
WIND FARM  
Lincoln County, MN

0 0.75 1.5 3  
Miles

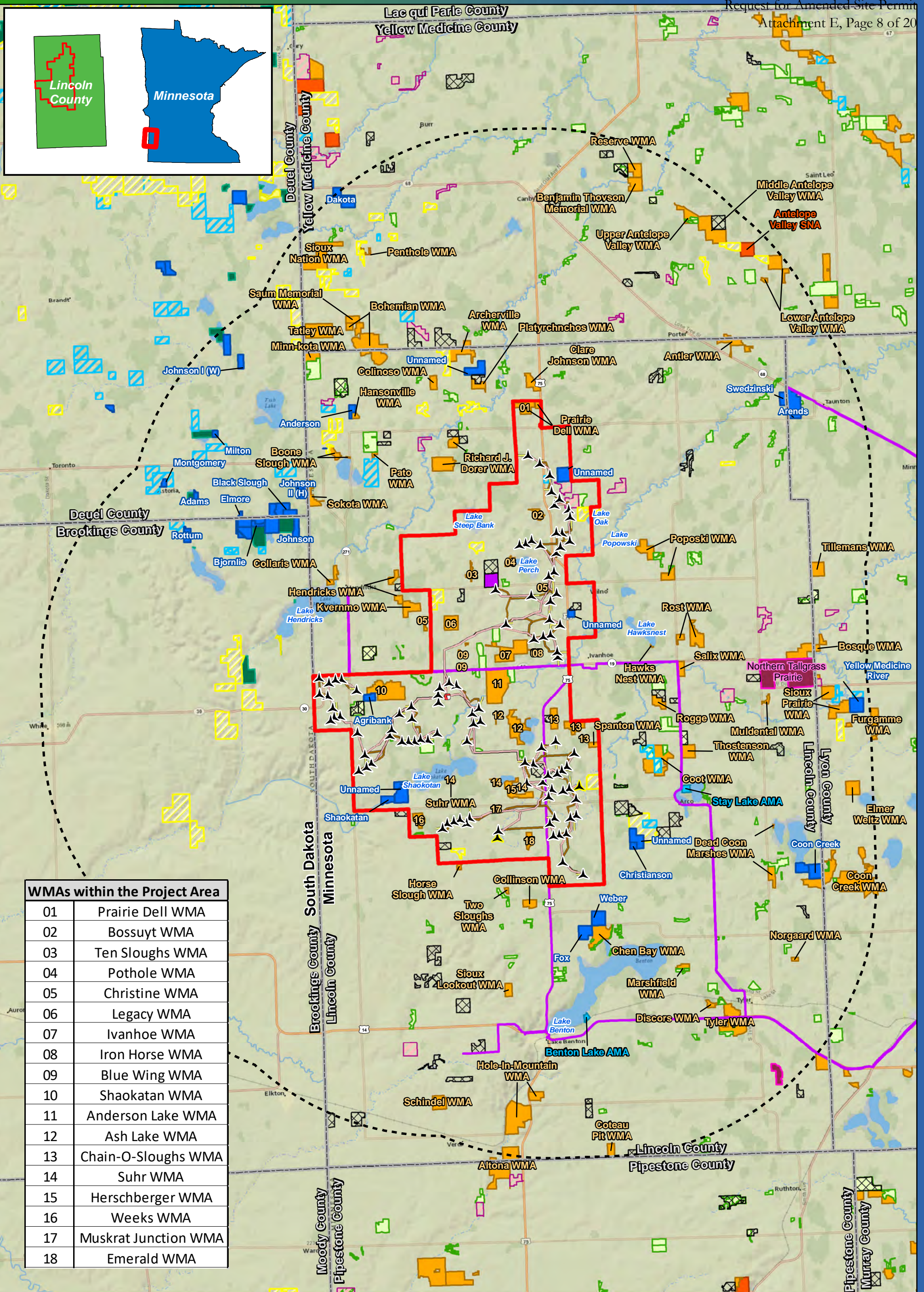
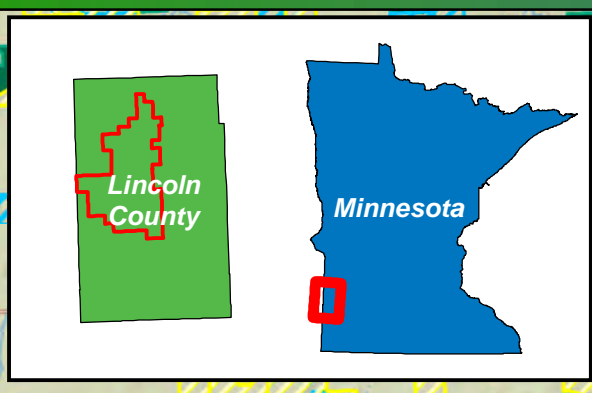
Imagery Source: 2015 Color FSA  
Data Source: Geronimo Energy, MN DNR, Census, Lincoln Co.

**Figure 6**  
**Zoning Map**  
**Vestas V110/V120**

**Blazing Star Wind Farm 2**  
**Lincoln County, MN**

**44.460125, -96.336861**

- Preliminary Turbine Location
- Alternate Turbine Location
- Project Area Boundary
- County and Judicial Ditch
- Shoreland Management District
- Urban Expansion District
- Business and Industry District
- 100 Year Floodplain
- FEMA Map Not Printed



| WMAs within the Project Area |                      |
|------------------------------|----------------------|
| 01                           | Prairie Dell WMA     |
| 02                           | Bossuyt WMA          |
| 03                           | Ten Sloughs WMA      |
| 04                           | Pothole WMA          |
| 05                           | Christine WMA        |
| 06                           | Legacy WMA           |
| 07                           | Ivanhoe WMA          |
| 08                           | Iron Horse WMA       |
| 09                           | Blue Wing WMA        |
| 10                           | Shaokatan WMA        |
| 11                           | Anderson Lake WMA    |
| 12                           | Ash Lake WMA         |
| 13                           | Chain-O-Sloughs WMA  |
| 14                           | Suhr WMA             |
| 15                           | Herschberger WMA     |
| 16                           | Weeks WMA            |
| 17                           | Muskrat Junction WMA |
| 18                           | Emerald WMA          |

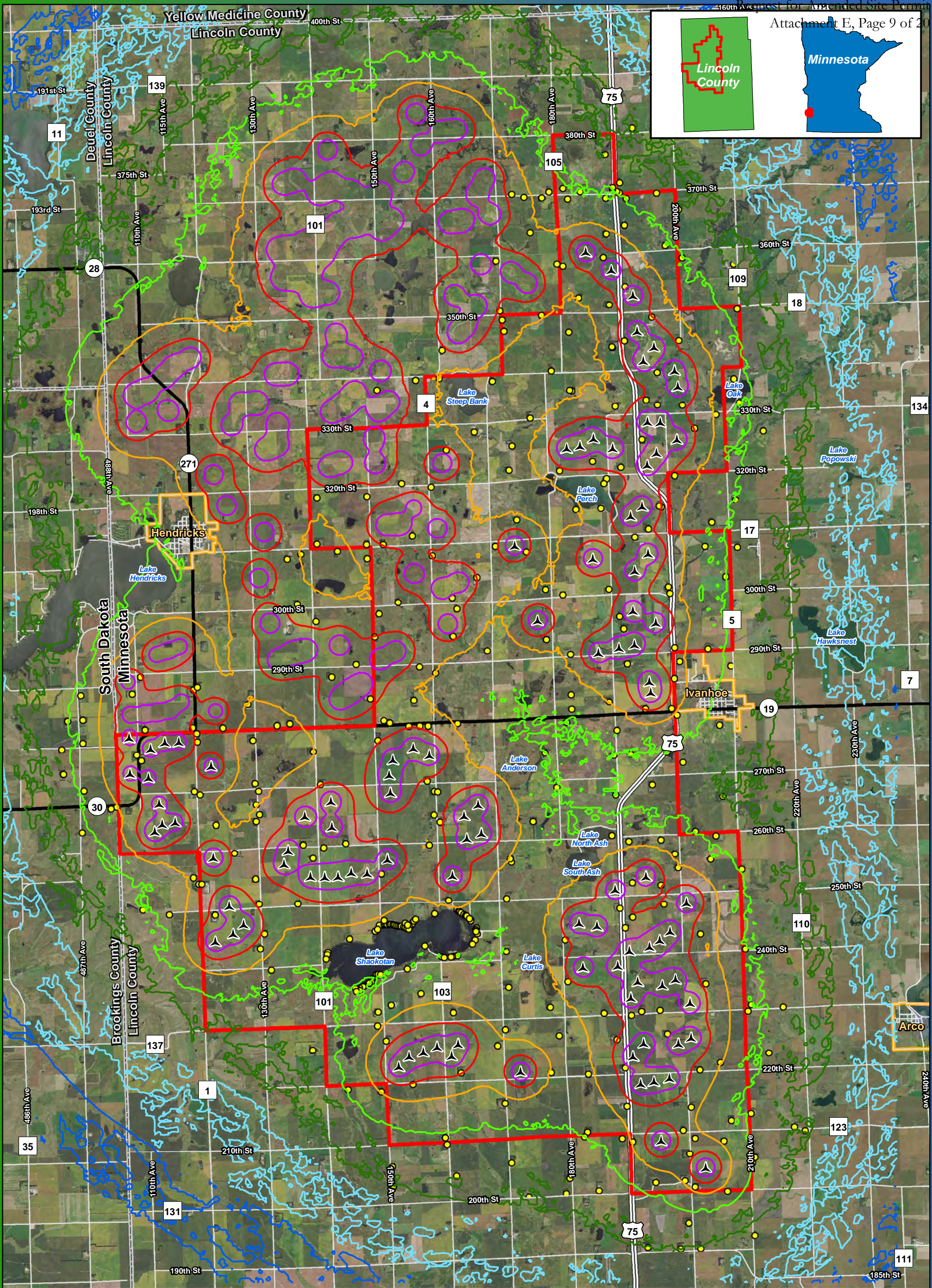
**Figure 7**  
**Public Land Ownership and Recreation**  
**Vestas V110/V120**  
**Blazing Star Wind Farm 2**  
**Lincoln County, MN**  
 44.460125, -96.336861

|                                |                                   |  |
|--------------------------------|-----------------------------------|--|
| ▲ Preliminary Turbine Location | — Snowmobile Trail                | ■ Aquatic Management Area (AMA)          |
| ▲ Alternate Turbine Location   | ■ SD Park and Recreation          | ⊗ Minnesota Walk-In Hunting Access Sites |
| - - - 10 Mile Buffer           | ■ Game Production Area            | ■ Federal Interest                       |
| ■ Project Area                 | ■ Reinvest in Minnesota (RIM)     | ■ National Wildlife Refuge               |
| ■ Project Substation           | ■ Pheasant Forever Easement       | ■ NWR Easement                           |
| — Access Road                  | ■ Wildlife Management Area (WMA)  | ■ Waterfowl Production                   |
| - - - Alternate Access Road    | ■ Scientific & Natural Area (SNA) | ■ Grassland Easement                     |
| — Collection Line              |                                   | ■ Wetland Easement                       |
| — Crane Path                   |                                   |  |

0 1.5 3 6  
Miles

Imagery Source: National Geographic World Map  
 Data Source: Geronimo Energy, MN DNR, USFWS, SD GFP





**BLAZING STAR 2**  
WIND FARM

Lincoln County, MN

0 0.75 1.5 3  
Miles

Imagery Source: 2015 Color FSA  
Data Source: Geronimo Energy, MN DNR, Census, Lincoln Co.

**Figure 8**  
**Sound/Noise**  
**Vestas V110/V120**

**Blazing Star Wind Farm 2**  
**Lincoln County, MN**

44.460125, -96.336861

|  |                              |
|--|------------------------------|
| ▲ Preliminary Turbine Location   | <b>Sound Pressure Levels</b> |
| ● Residential Structures within 1 Mile (excluding cities of Hendricks and Ivanhoe) | — 20 dBA                     |
| □ Project Area Boundary  | — 25 dBA                     |
|  | — 30 dBA                     |
|  | — 35 dBA                     |
|  | — 40 dBA                     |
|  | — 45 dBA                     |
|  | — 50 dBA                     |