

Proposed Pipeline - Sandpiper	Milepost - Sandpiper	Tract Boundary
Existing Enbridge Pipelines	Potential Block Valve	Facility Boundary
Foreign Pipes	Environmental Survey Area (ESA)	Previously Sited Facility Boundary
Transmission Lines		Section Lines
SPREAD BREAK		

500 250 0 500 1,000 Feet

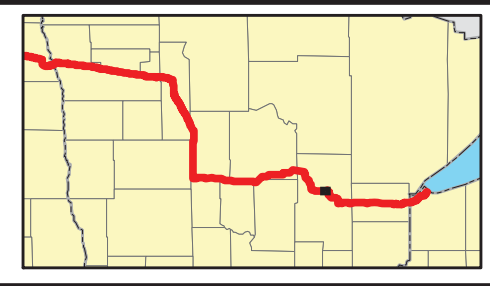
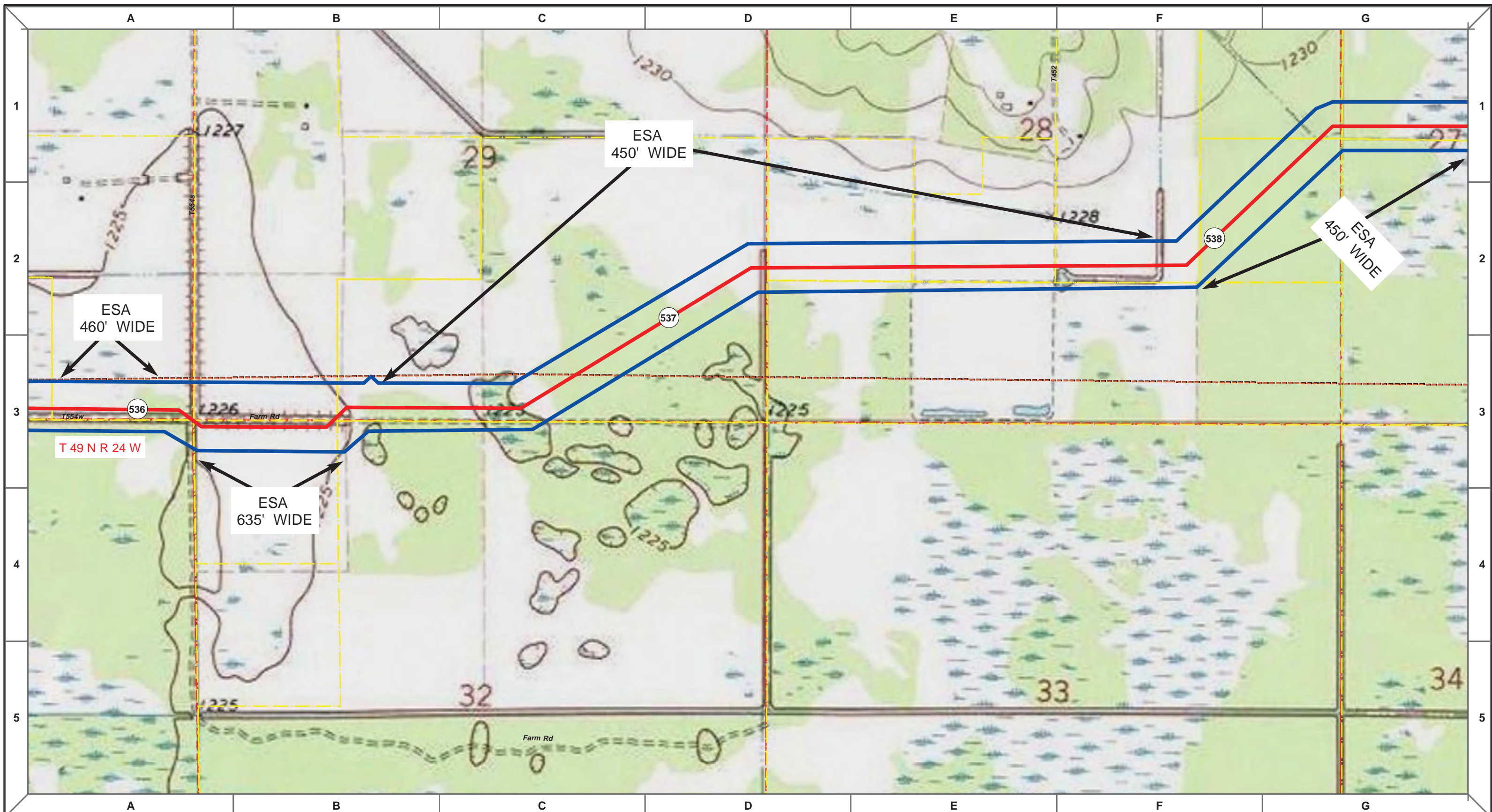
MLB	DATE	REV NO.	DESCRIPTION
	10/10/13	0	PUC Submittal

ENBRIDGE PIPELINES (NORTH DAKOTA) LLC

PROPOSED SANDPIPER PIPELINE PROJECT
ROUTE MAP
Aitkin County, MN

<small>DRAWN:</small> MLB	<small>CHECKED:</small> --
<small>DATE:</small> Nov 05, 2013	<small>SCALE:</small> AS SHOWN

Spread:8 Map: 99 of 128



Proposed Pipeline - Sandpiper	Milepost - Sandpiper	Tract Boundary
Existing Enbridge Pipelines	Potential Block Valve	Facility Boundary
Foreign Pipes	Environmental Survey Area (ESA)	Previously Sited Facility Boundary
Transmission Lines		Section Lines
SPREAD BREAK		

500 250 0 500 1,000
 Feet

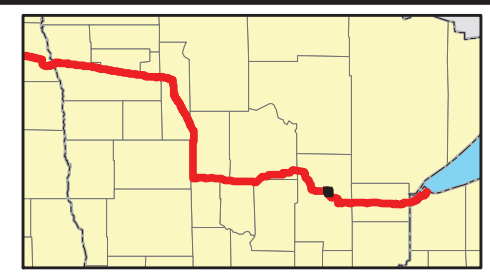
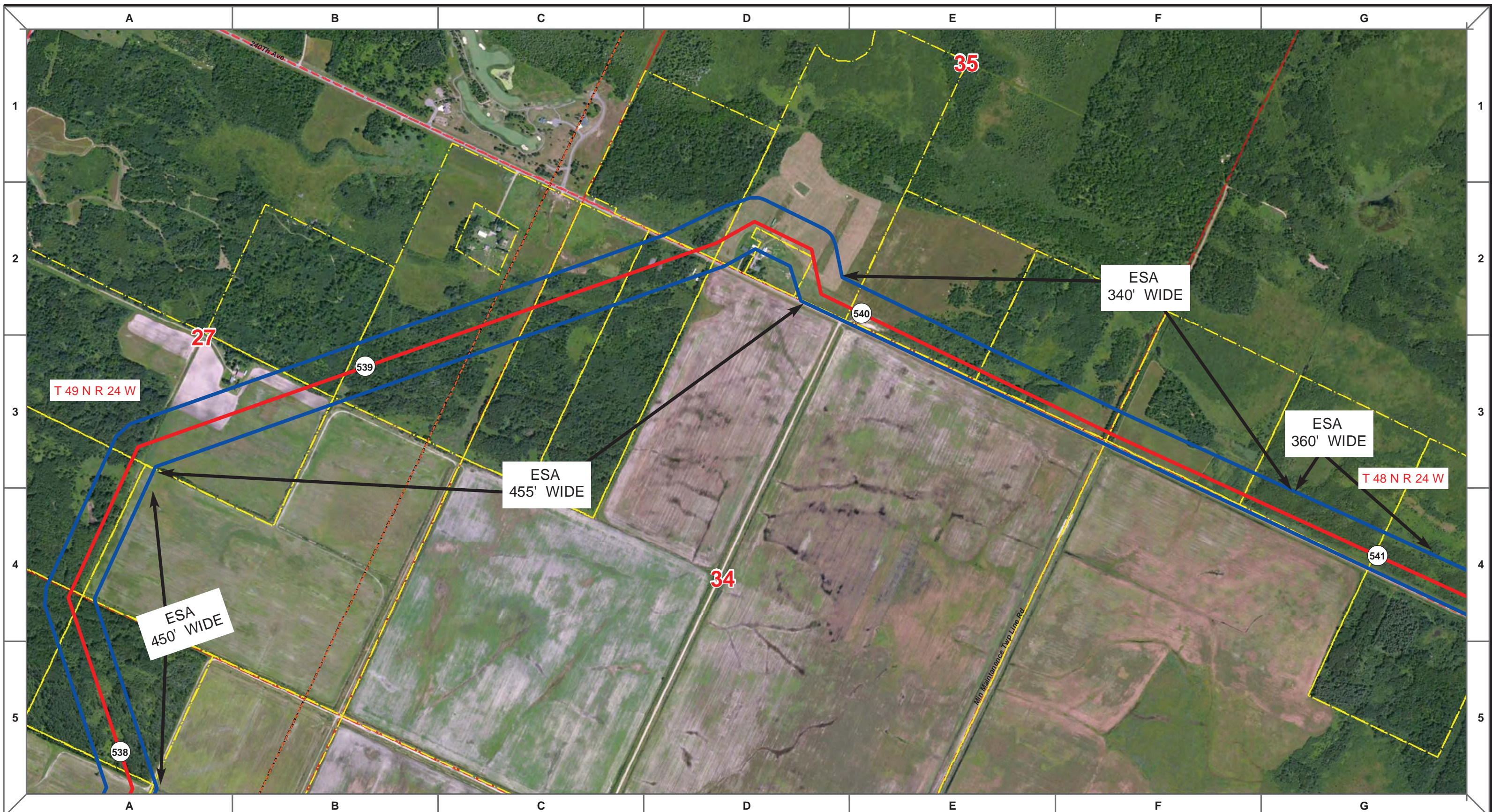
MLB	DATE	REV NO.	DESCRIPTION
	10/10/13	0	PUC Submittal

ENBRIDGE PIPELINES (NORTH DAKOTA) LLC

**PROPOSED SANDPIPER
PIPELINE PROJECT
ROUTE MAP
Aitkin County, MN**

<small>DRAWN:</small> MLB	<small>CHECKED:</small> --
<small>DATE:</small> Nov 05, 2013	<small>SCALE:</small> AS SHOWN

Spread:8 Map: 99 of 128



Proposed Pipeline - Sandpiper	Milepost - Sandpiper	Tract Boundary
Existing Enbridge Pipelines	Potential Block Valve	Facility Boundary
Foreign Pipes	Environmental Survey Area (ESA)	Previously Sited Facility Boundary
Transmission Lines		Section Lines
SPREAD BREAK		

500 250 0 500 1,000 Feet

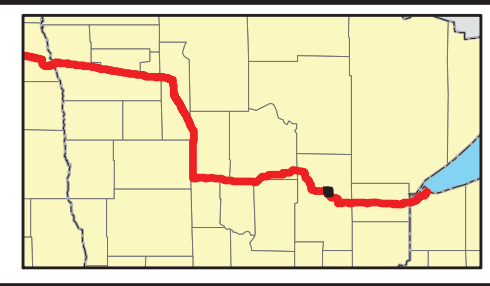
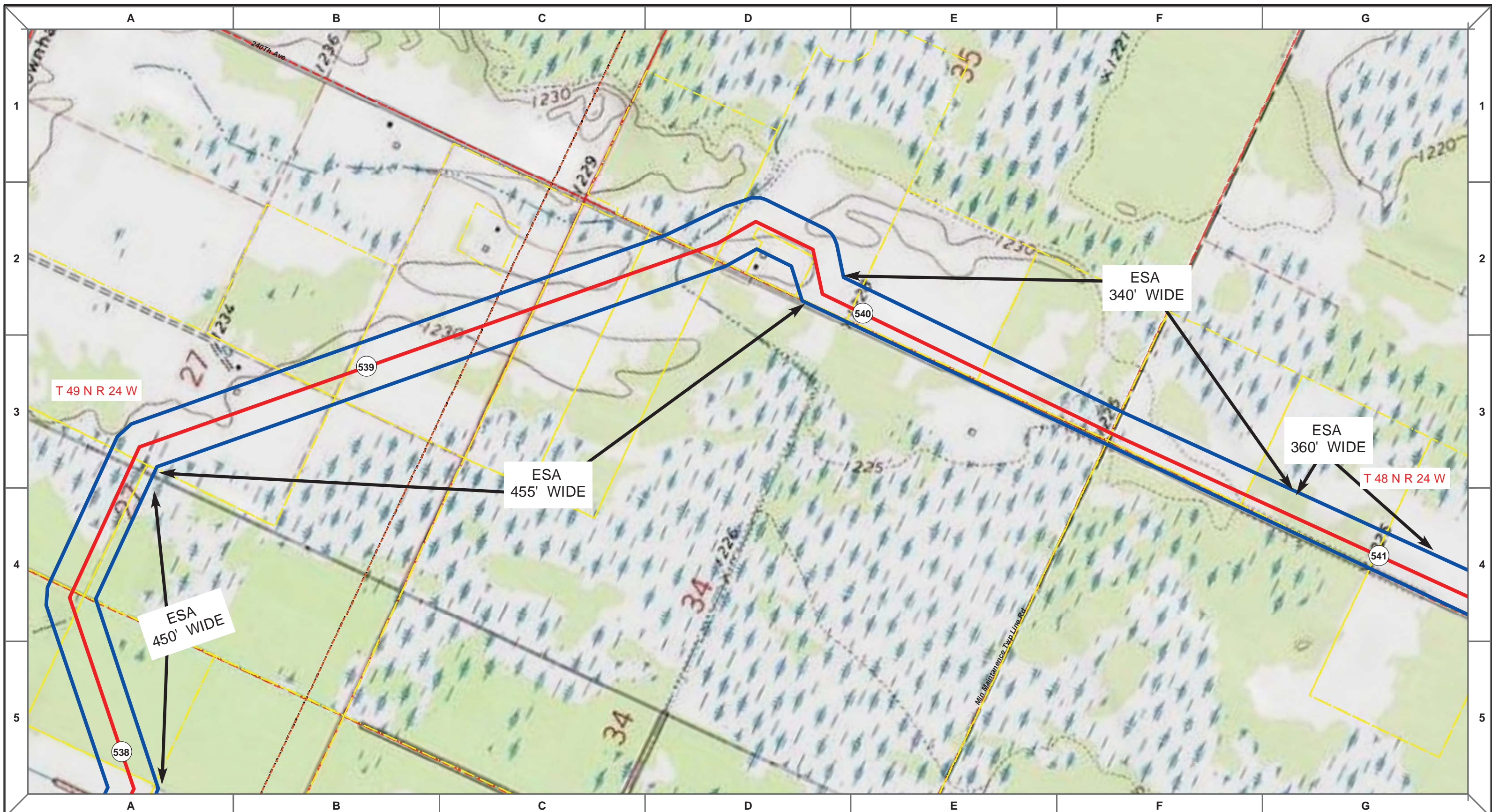
MLB	DATE	REV NO.	DESCRIPTION
	10/10/13	0	PUC Submittal

ENBRIDGE PIPELINES (NORTH DAKOTA) LLC

PROPOSED SANDPIPER PIPELINE PROJECT
ROUTE MAP
Aitkin County, MN

<small>DRAWN:</small> MLB	<small>CHECKED:</small> --
<small>DATE:</small> Nov 05, 2013	<small>SCALE:</small> AS SHOWN

Spread:8 Map: 100 of 128



Proposed Pipeline - Sandpiper	Milepost - Sandpiper	Tract Boundary
Existing Enbridge Pipelines	Potential Block Valve	Facility Boundary
Foreign Pipes	Environmental Survey Area (ESA)	Previously Sited Facility Boundary
Transmission Lines		Section Lines
SPREAD BREAK		

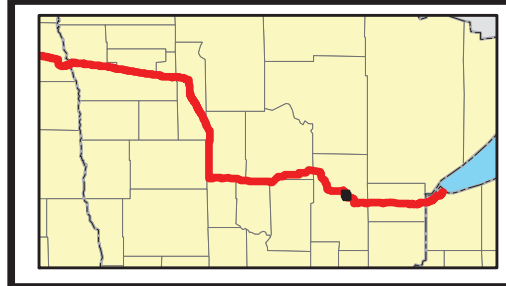
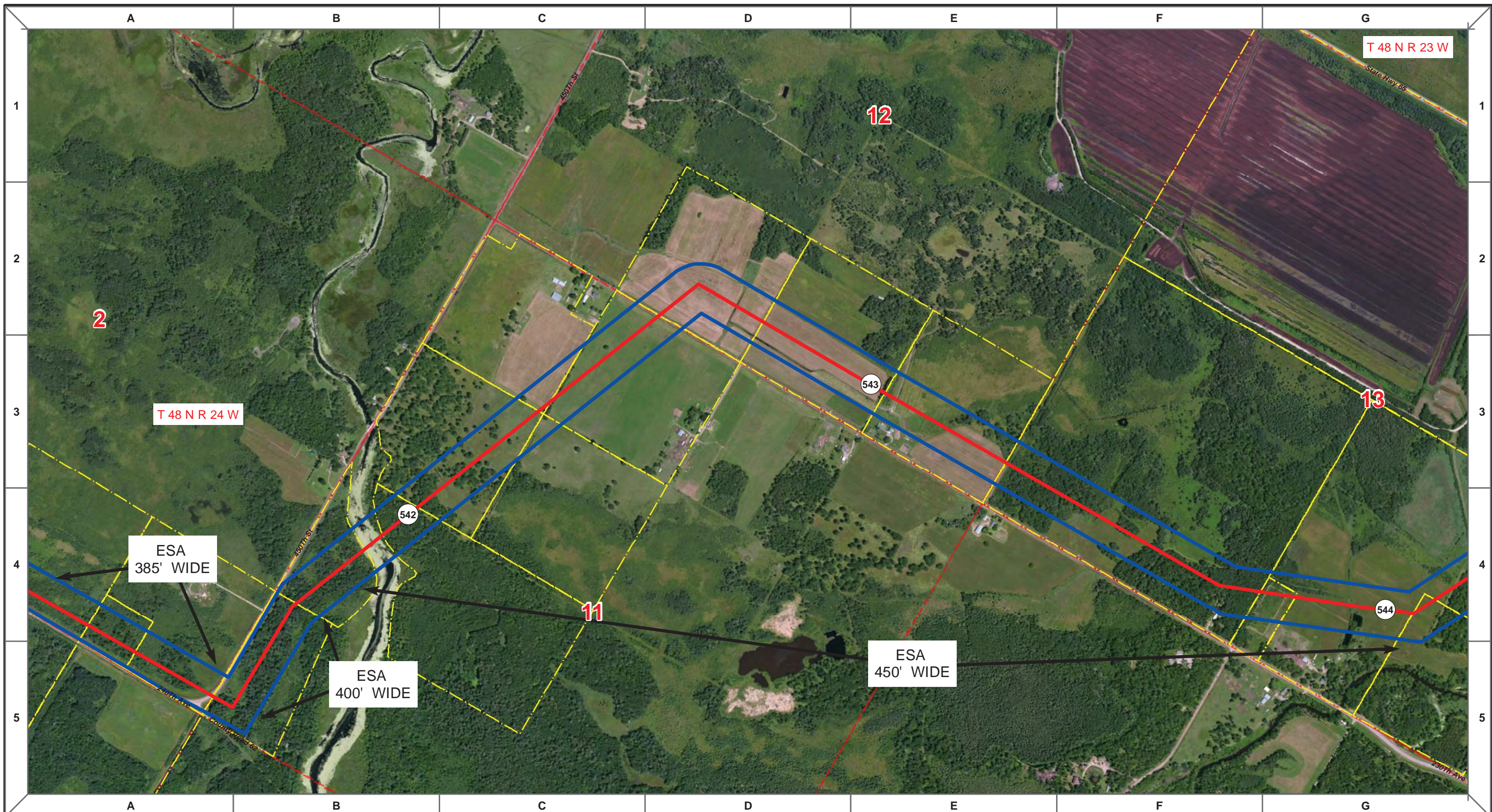
MLB	DATE	REV NO.	DESCRIPTION
	10/10/13	0	PUC Submittal

ENBRIDGE PIPELINES (NORTH DAKOTA) LLC

PROPOSED SANDPIPER PIPELINE PROJECT
ROUTE MAP
Aitkin County, MN

DRAWN: MLB	CHECKED: --
DATE: Nov 05, 2013	SCALE: AS SHOWN

Spread:8 Map: 100 of 128



Proposed Pipeline - Sandpiper	Milepost - Sandpiper	Tract Boundary
Existing Enbridge Pipelines	Potential Block Valve	Facility Boundary
Foreign Pipes	Environmental Survey Area (ESA)	Previously Sited Facility Boundary
Transmission Lines	Section Lines	
SPREAD BREAK		

500 250 0 500 1,000 Feet

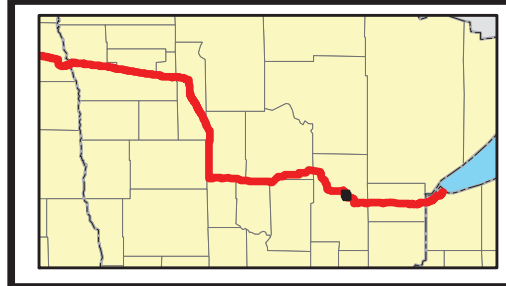
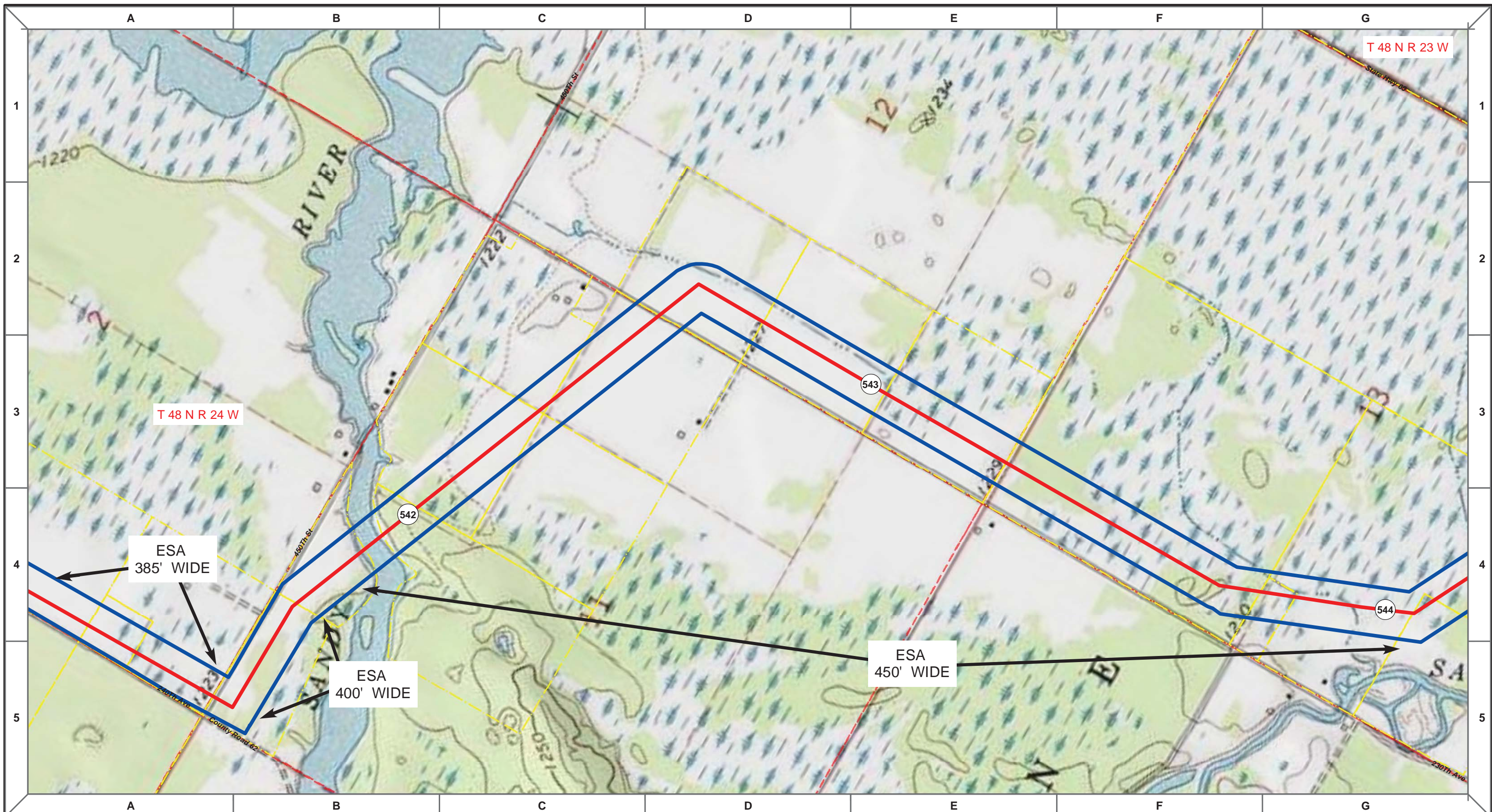
MLB	DATE	REV NO.	DESCRIPTION
	10/10/13	0	PUC Submittal

ENBRIDGE PIPELINES (NORTH DAKOTA) LLC

**PROPOSED SANDPIPER
PIPELINE PROJECT
ROUTE MAP
Aitkin County, MN**

<small>DRAWN:</small> MLB	<small>CHECKED:</small> --
<small>DATE:</small> Oct 18, 2013	<small>SCALE:</small> AS SHOWN

Spread:8 Map: 101 of 128



Proposed Pipeline - Sandpiper	Milepost - Sandpiper	Tract Boundary
Existing Enbridge Pipelines	Potential Block Valve	Facility Boundary
Foreign Pipes	Environmental Survey Area (ESA)	Previously Sited Facility Boundary
Transmission Lines		Section Lines
SPREAD BREAK		

500 250 0 500 1,000 Feet

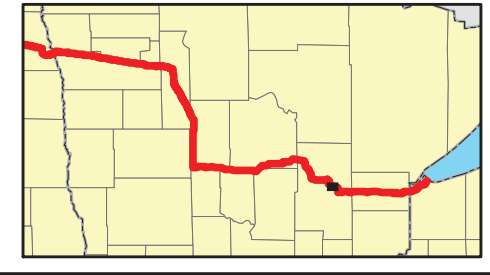
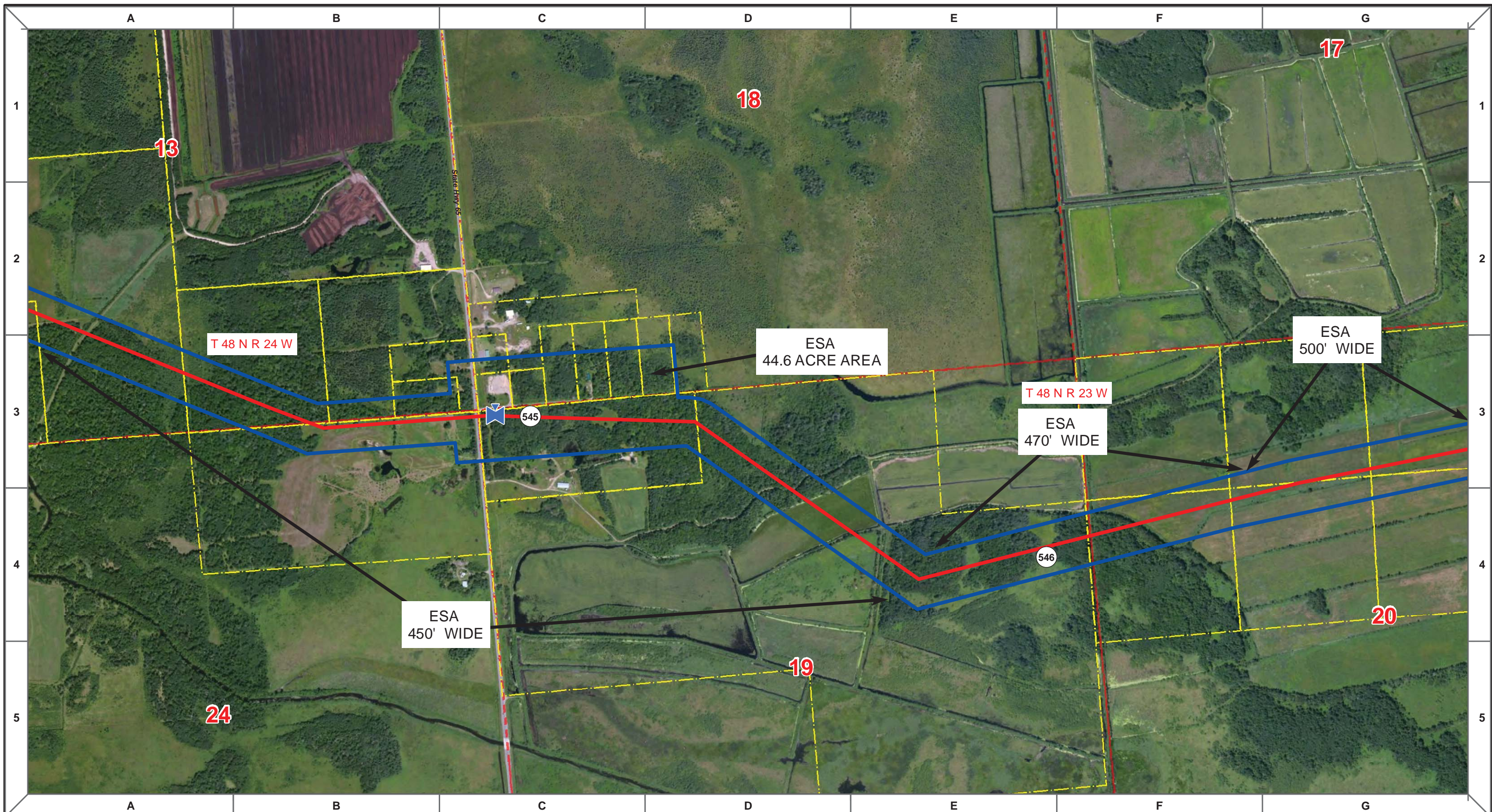
MLB		10/10/13	0		
DRAWN	CHECKED	APPROVED	DATE	REV NO.	DESCRIPTION

ENBRIDGE PIPELINES (NORTH DAKOTA) LLC

**PROPOSED SANDPIPER PIPELINE PROJECT
ROUTE MAP
Aitkin County, MN**

DRAWN: MLB	CHECKED: --
DATE: Oct 18, 2013	SCALE: AS SHOWN

Spread:8 Map: 101 of 128



Proposed Pipeline - Sandpiper	Milepost - Sandpiper	Tract Boundary
Existing Enbridge Pipelines	Potential Block Valve	Facility Boundary
Foreign Pipes	Environmental Survey Area (ESA)	Previously Sited Facility Boundary
Transmission Lines		Section Lines
SPREAD BREAK		

500 250 0 500 1,000 Feet

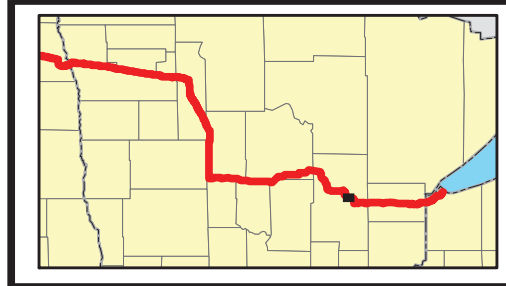
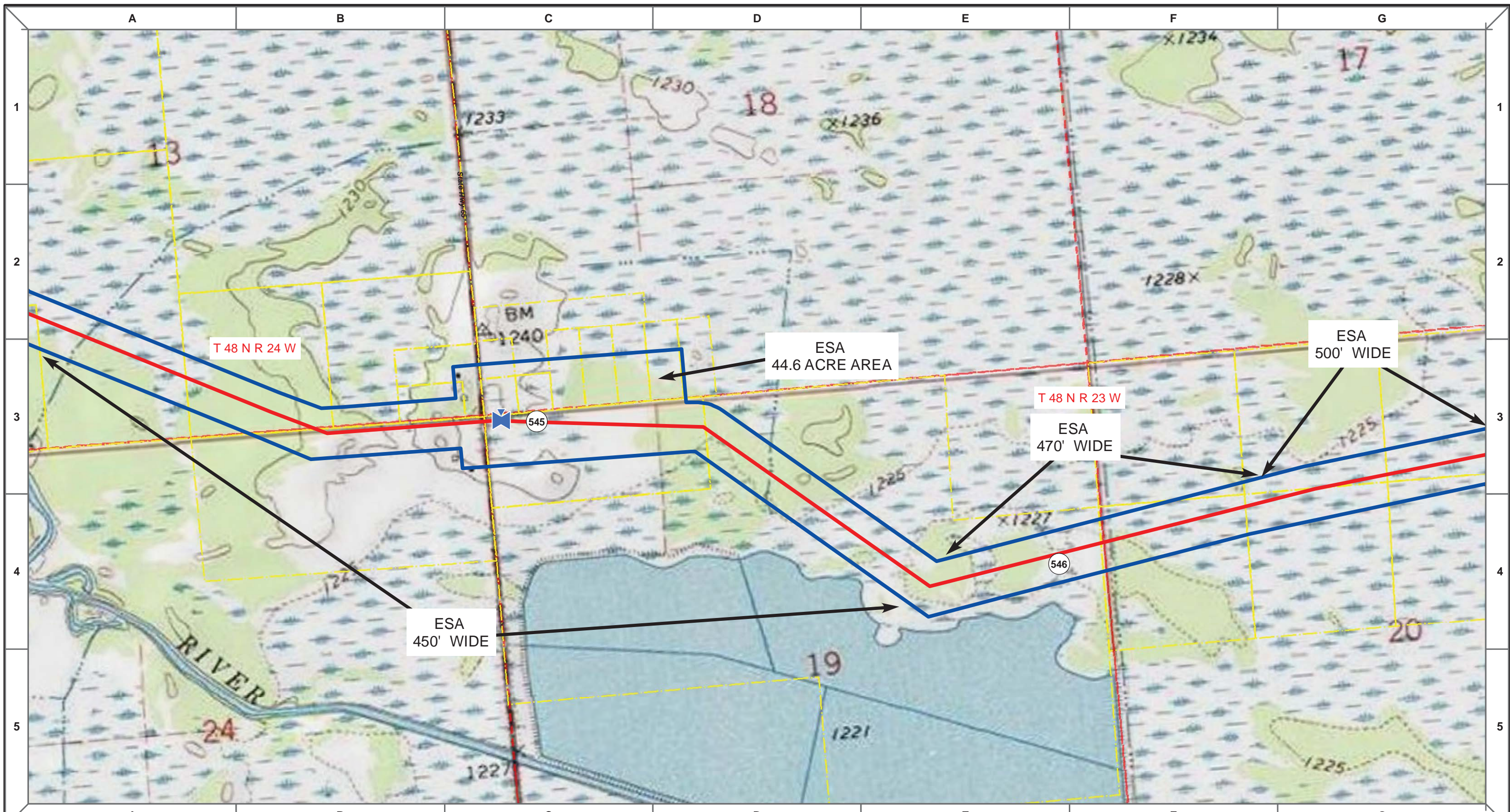
MLB		10/10/13	0		
DRAWN	CHECKED	APPROVED	DATE	REV NO.	DESCRIPTION
					PUC Submittal

ENBRIDGE PIPELINES (NORTH DAKOTA) LLC

**PROPOSED SANDPIPER PIPELINE PROJECT
ROUTE MAP
Aitkin County, MN**

<small>DRAWN:</small> MLB	<small>CHECKED:</small> --
<small>DATE:</small> Oct 18, 2013	<small>SCALE:</small> AS SHOWN

Spread:8 Map: 102 of 128



Proposed Pipeline - Sandpiper	Milepost - Sandpiper	Tract Boundary
Existing Enbridge Pipelines	Potential Block Valve	Facility Boundary
Foreign Pipes	Environmental Survey Area (ESA)	Previously Sited Facility Boundary
Transmission Lines		Section Lines
SPREAD BREAK		

500 250 0 500 1,000 Feet

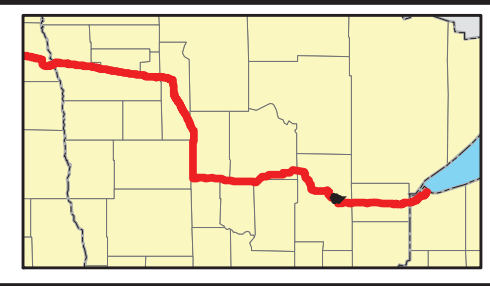
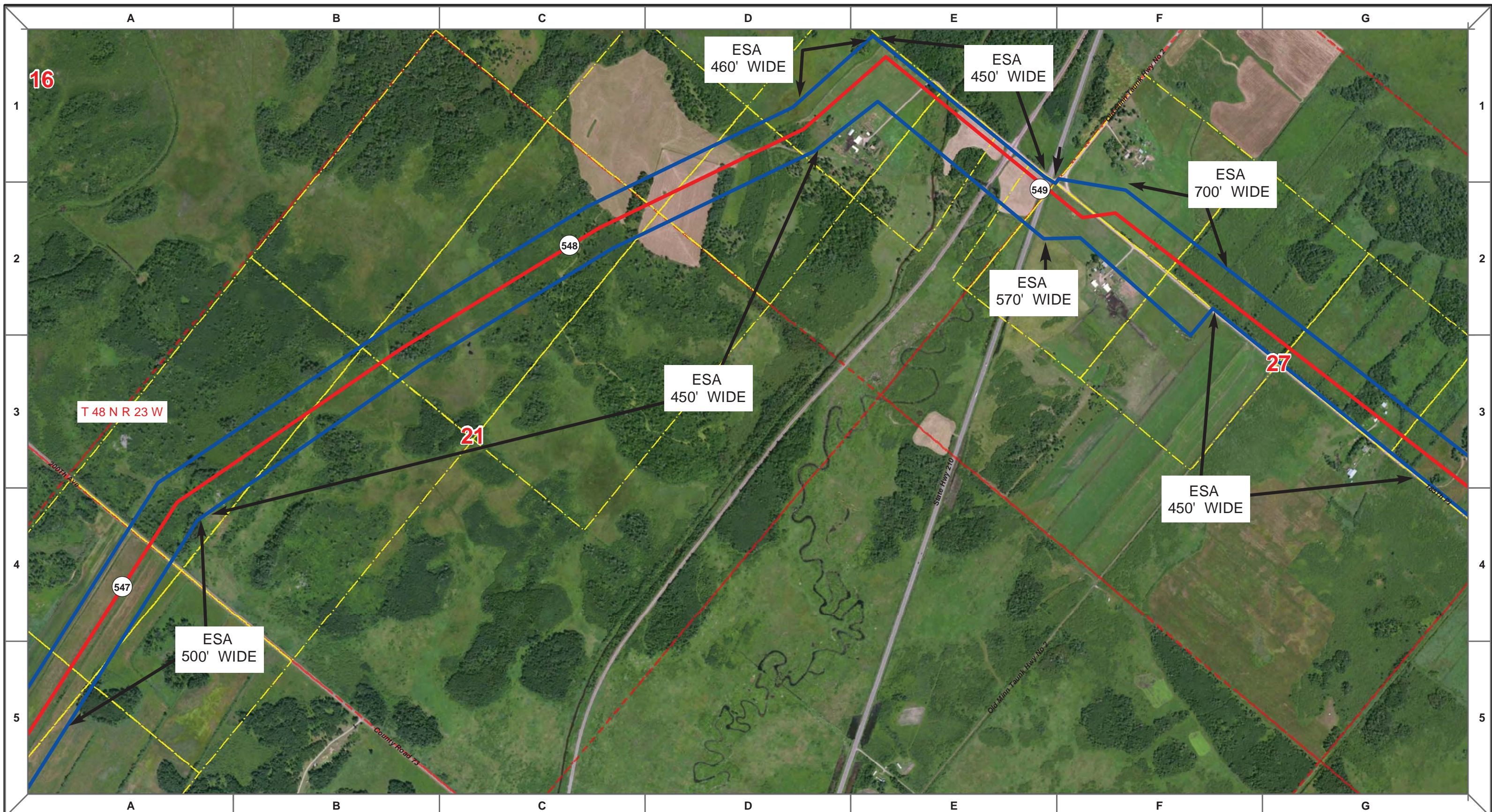
MLB	DATE	REV NO.	DESCRIPTION
	10/10/13	0	PUC Submittal

ENBRIDGE PIPELINES (NORTH DAKOTA) LLC

**PROPOSED SANDPIPER PIPELINE PROJECT
ROUTE MAP
Aitkin County, MN**

<small>DRAWN:</small> MLB	<small>CHECKED:</small> --
<small>DATE:</small> Oct 18, 2013	<small>SCALE:</small> AS SHOWN

Spread:8 Map: 102 of 128



- Proposed Pipeline - Sandpiper
- Existing Enbridge Pipelines
- Foreign Pipes
- - - Transmission Lines
- SPREAD BREAK
- 1 Milepost - Sandpiper
- Potential Block Valve
- Environmental Survey Area (ESA)
- Tract Boundary
- Facility Boundary
- Previously Sited Facility Boundary
- Section Lines



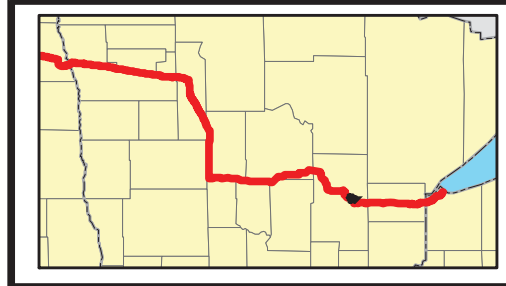
MLB		10/10/13	0	PUC Submittal
DRAWN	CHECKED	APPROVED	DATE	REV NO.
DESCRIPTION				

ENBRIDGE PIPELINES (NORTH DAKOTA) LLC

**PROPOSED SANDPIPER PIPELINE PROJECT
ROUTE MAP
Aitkin County, MN**

DRAWN: <i>MLB</i>	CHECKED: <i>—</i>
DATE: <i>Oct 18, 2013</i>	SCALE: <i>AS SHOWN</i>

Spread:8Map: 103 of 128



Proposed Pipeline - Sandpiper	Milepost - Sandpiper	Tract Boundary
Existing Enbridge Pipelines	Potential Block Valve	Facility Boundary
Foreign Pipes	Environmental Survey Area (ESA)	Previously Sited Facility Boundary
Transmission Lines		Section Lines
SPREAD BREAK		

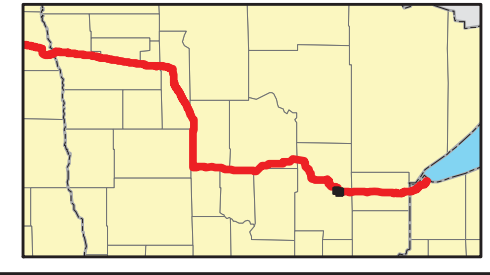
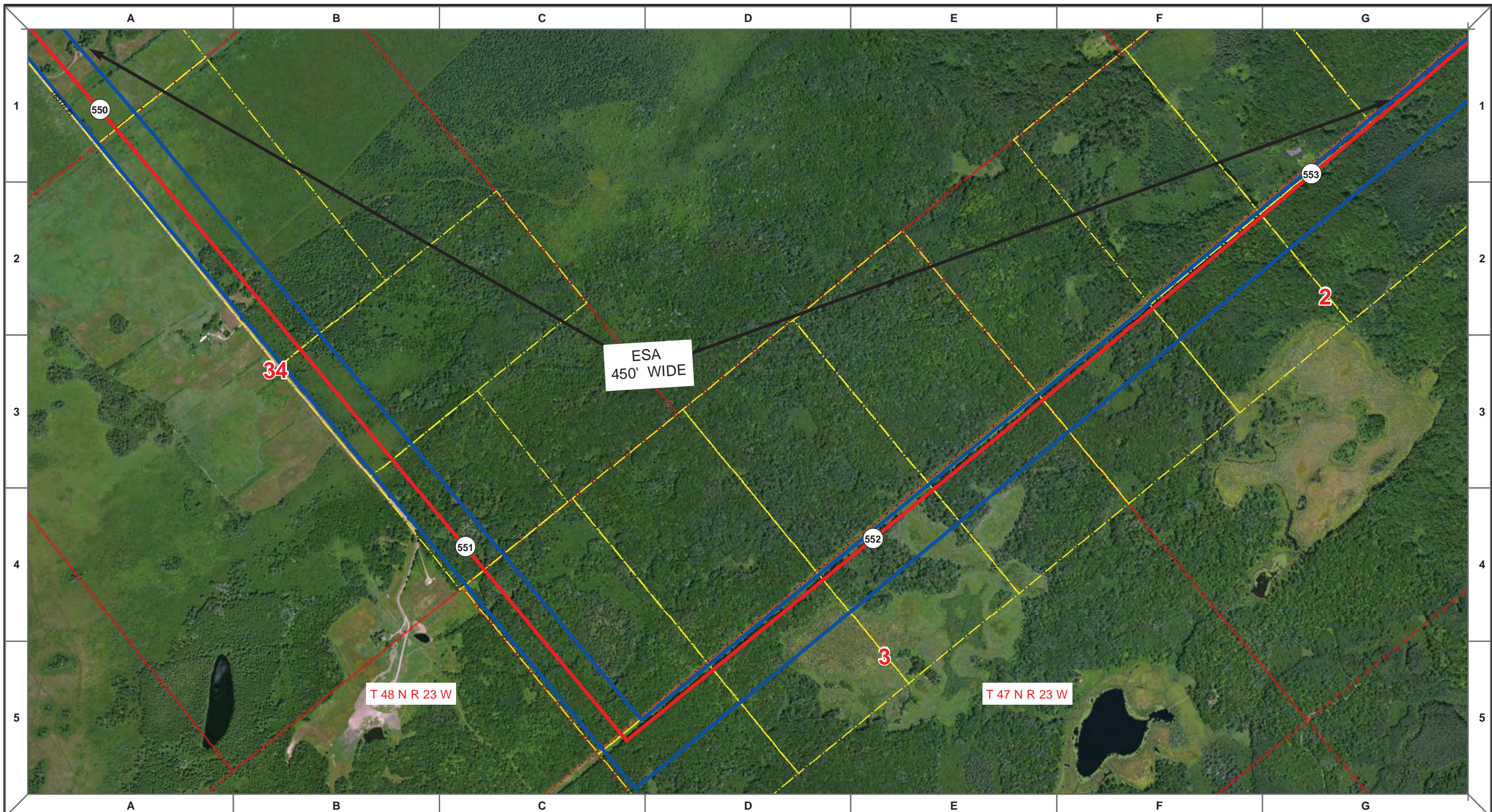
MLB	DATE	REV NO.	DESCRIPTION
	10/10/13	0	PUC Submittal

ENBRIDGE PIPELINES (NORTH DAKOTA) LLC

PROPOSED SANDPIPER PIPELINE PROJECT
ROUTE MAP
Aitkin County, MN

<small>DRAWN:</small> MLB	<small>CHECKED:</small> --
<small>DATE:</small> Oct 18, 2013	<small>SCALE:</small> AS SHOWN

Spread:8 Map: 103 of 128



	Proposed Pipeline - Sandpiper		Milepost - Sandpiper		Tract Boundary
	Existing Enbridge Pipelines		Potential Block Valve		Facility Boundary
	Foreign Pipes		Environmental Survey Area (ESA)		Previously Sited Facility Boundary
	Transmission Lines				Section Lines
	SPREAD BREAK				

500 250 0 500 1,000 Feet

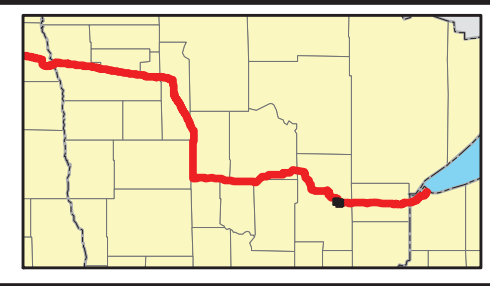
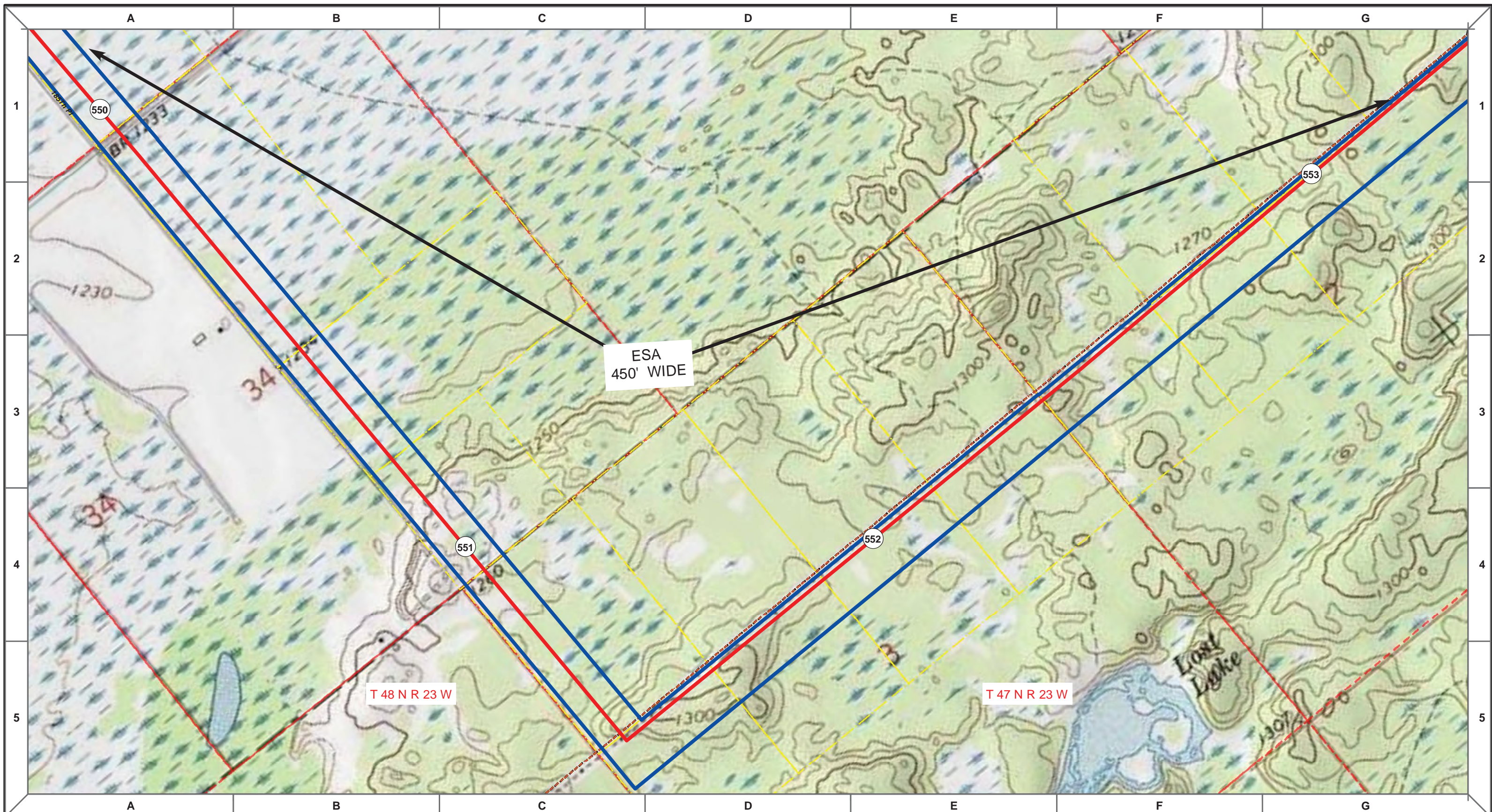
MLB		10/10/13	0		
DRAWN	CHECKED	APPROVED	DATE	REV NO.	DESCRIPTION

ENBRIDGE PIPELINES (NORTH DAKOTA) LLC

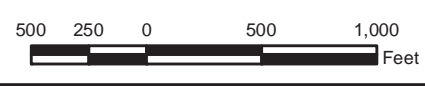
**PROPOSED SANDPIPER PIPELINE PROJECT
ROUTE MAP
Aitkin County, MN**

DRAWN: MLB	CHECKED: --
DATE: Oct 18, 2013	SCALE: AS SHOWN

Spread:8 Map: 104 of 128



- Proposed Pipeline - Sandpiper
- Existing Enbridge Pipelines
- Foreign Pipes
- Transmission Lines
- SPREAD BREAK
- 1 Milepost - Sandpiper
- ▶ Potential Block Valve
- Environmental Survey Area (ESA)
- Tract Boundary
- Facility Boundary
- Previously Sited Facility Boundary
- Section Lines



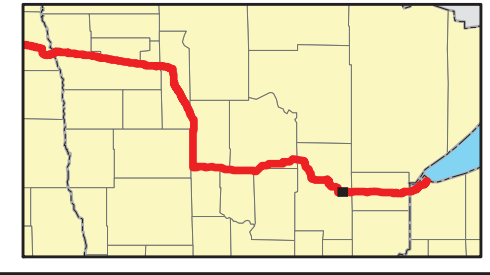
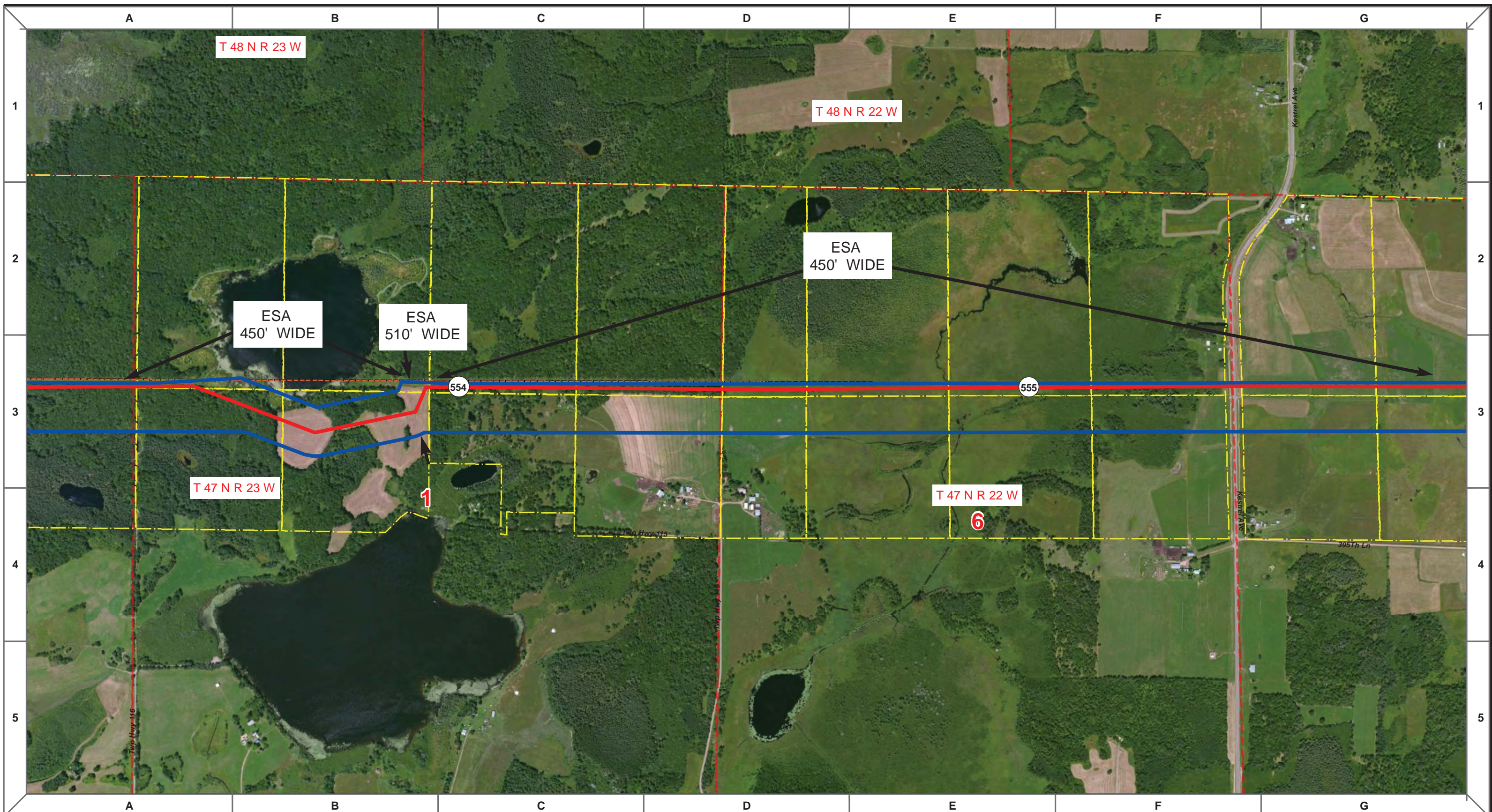
MLB		10/10/13	0		PUC Submittal
DRAWN	CHECKED	APPROVED	DATE	REV NO.	DESCRIPTION

ENBRIDGE PIPELINES (NORTH DAKOTA) LLC

PROPOSED SANDPIPER PIPELINE PROJECT
ROUTE MAP
Aitkin County, MN

DRAWN: <i>MLB</i>	CHECKED: <i>--</i>
DATE: <i>Oct 18, 2013</i>	SCALE: <i>AS SHOWN</i>

Spread:8Map: 104 of 128



Proposed Pipeline - Sandpiper	Milepost - Sandpiper	Tract Boundary
Existing Enbridge Pipelines	Potential Block Valve	Facility Boundary
Foreign Pipes	Environmental Survey Area (ESA)	Previously Sited Facility Boundary
Transmission Lines		Section Lines
SPREAD BREAK		

500 250 0 500 1,000 Feet

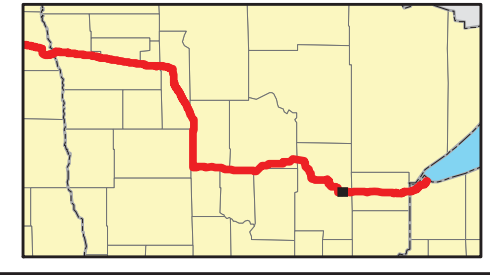
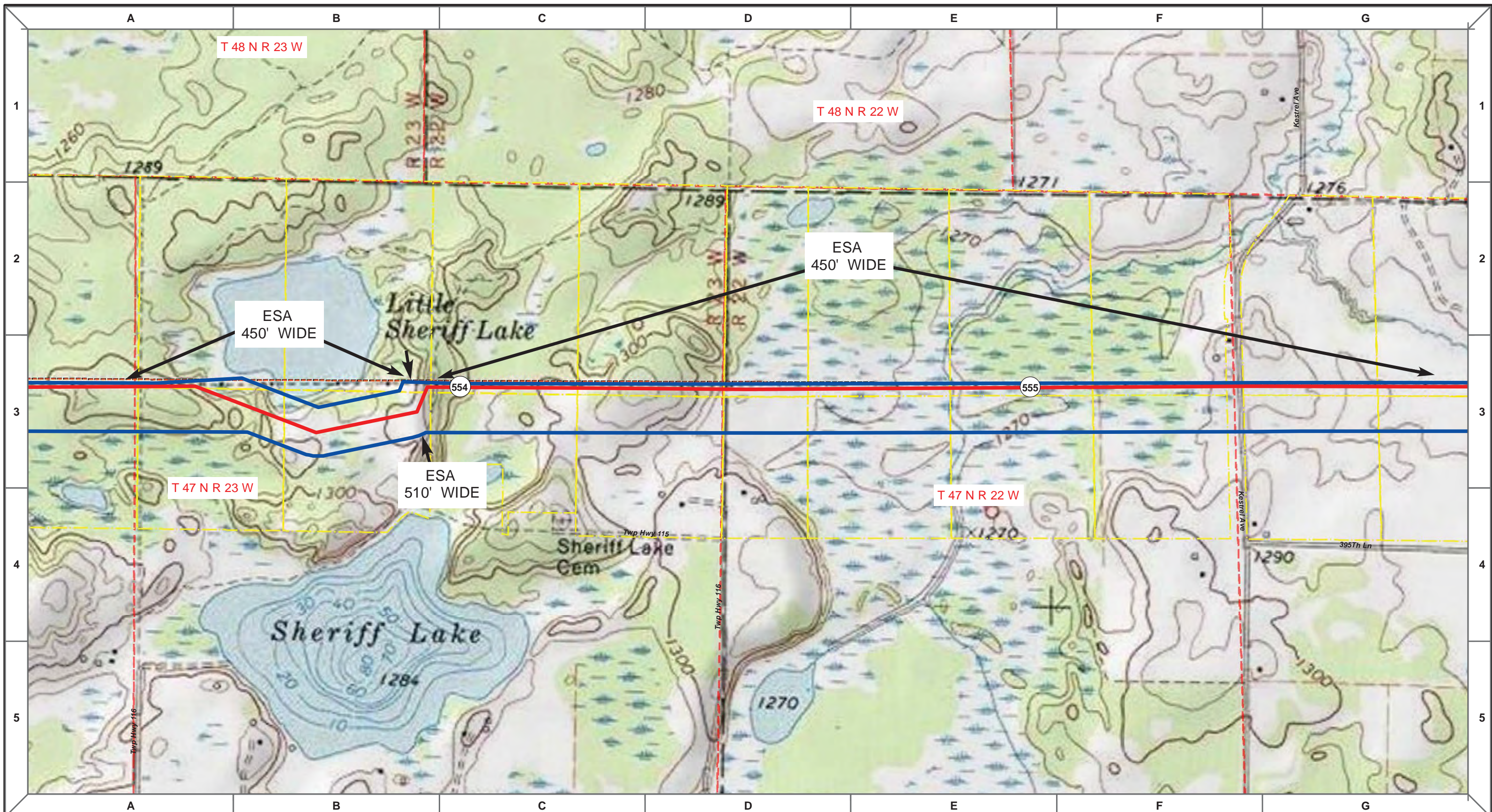
MLB	DATE	REV NO.	DESCRIPTION
	10/10/13	0	PUC Submittal

ENBRIDGE PIPELINES (NORTH DAKOTA) LLC

**PROPOSED SANDPIPER PIPELINE PROJECT
ROUTE MAP
Aitkin County, MN**

DRAWN: MLB	CHECKED: --
DATE: Nov 05, 2013	SCALE: AS SHOWN

Spread:8 Map: 105 of 128



Proposed Pipeline - Sandpiper	Milepost - Sandpiper	Tract Boundary
Existing Enbridge Pipelines	Potential Block Valve	Facility Boundary
Foreign Pipes	Environmental Survey Area (ESA)	Previously Sited Facility Boundary
Transmission Lines		Section Lines
SPREAD BREAK		

500 250 0 500 1,000 Feet

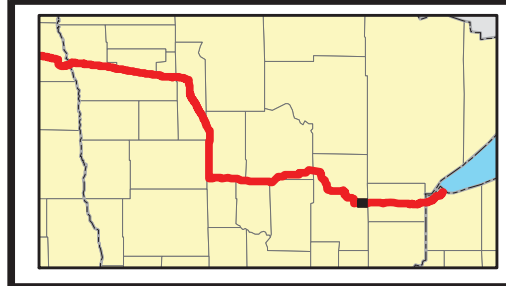
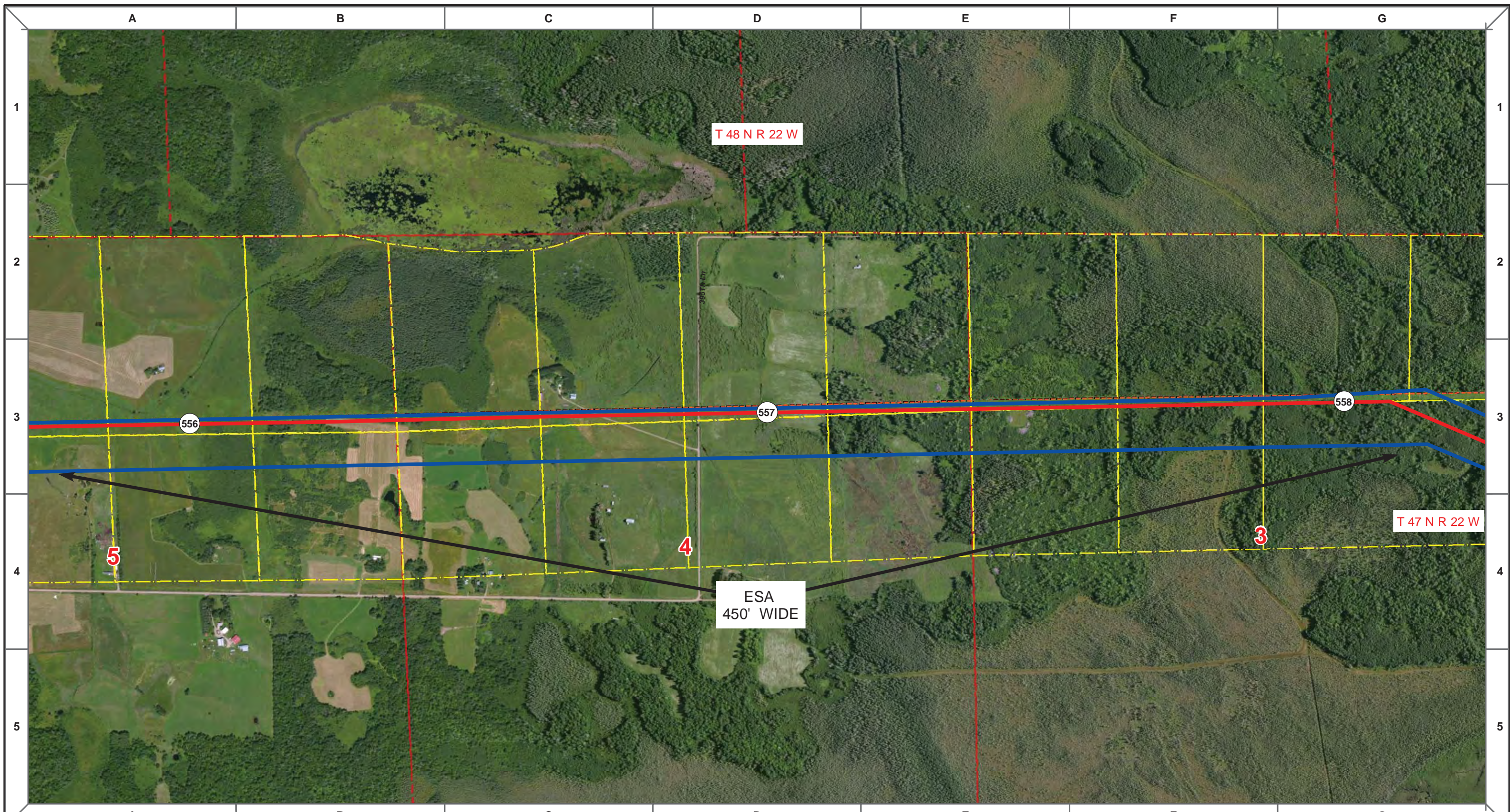
MLB	10/10/13	0	PUC Submittal
DRAWN	CHECKED	APPROVED	DATE
REV NO.	DESCRIPTION		

ENBRIDGE PIPELINES (NORTH DAKOTA) LLC

PROPOSED SANDPIPER PIPELINE PROJECT
ROUTE MAP
Aitkin County, MN

DRAWN: MLB	CHECKED: --
DATE: Oct 18, 2013	SCALE: AS SHOWN

Spread:8 Map: 105 of 128



- Proposed Pipeline - Sandpiper
- Existing Enbridge Pipelines
- Foreign Pipes
- - - Transmission Lines
- SPREAD BREAK
- 1 Milepost - Sandpiper
- ✕ Potential Block Valve
- Environmental Survey Area (ESA)
- Tract Boundary
- Facility Boundary
- Previously Sited Facility Boundary
- Section Lines

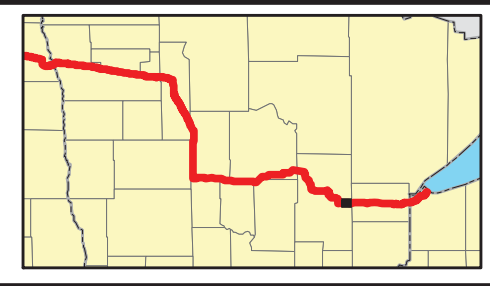
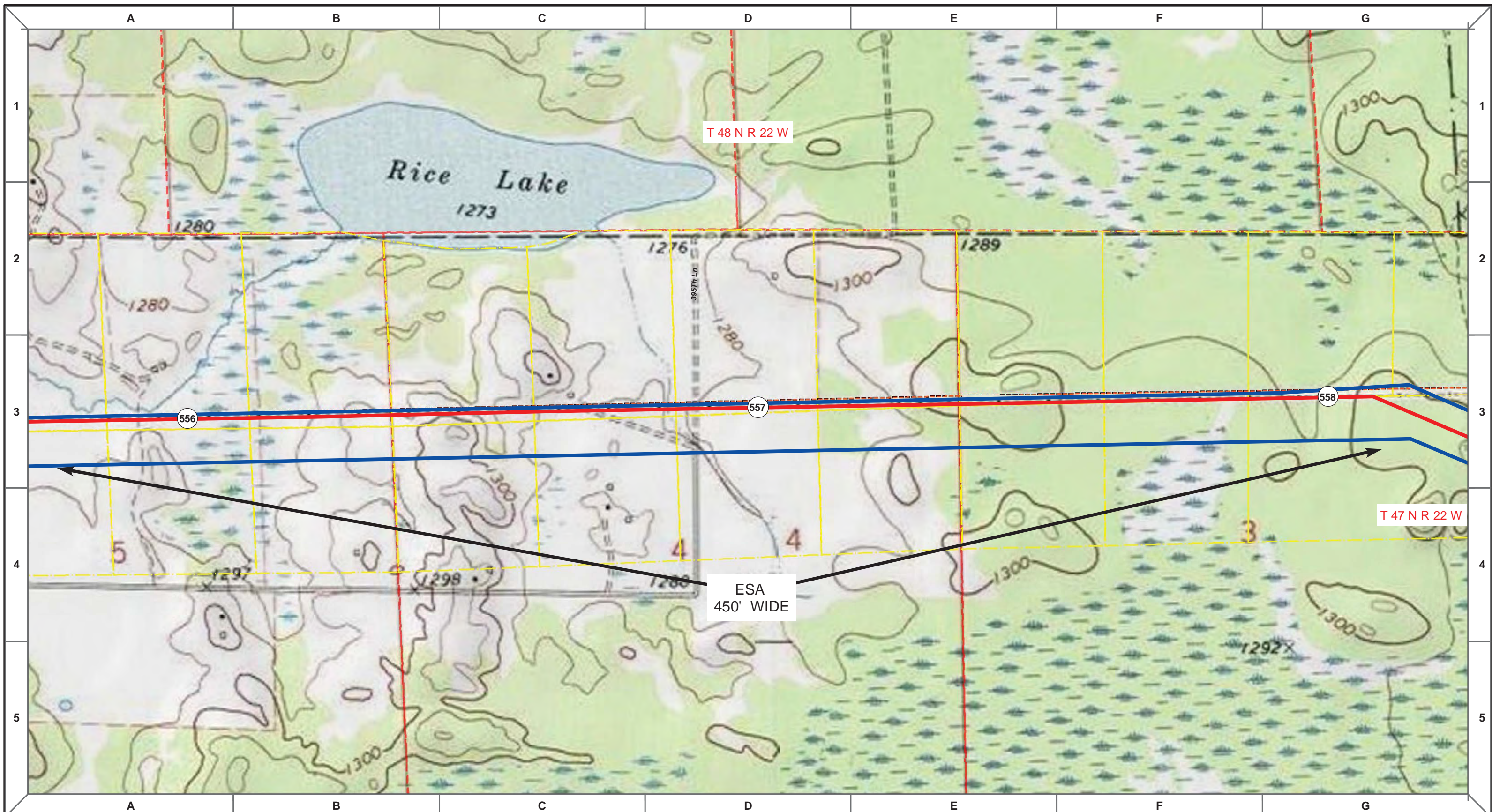


MLB	CHECKED	APPROVED	DATE	REV NO.	DESCRIPTION
			10/10/13	0	PUC Submittal

ENBRIDGE PIPELINES (NORTH DAKOTA) LLC

**PROPOSED SANDPIPER PIPELINE PROJECT
ROUTE MAP
Aitkin County, MN**

DRAWN: MLB	CHECKED: --
DATE: Oct 18, 2013	SCALE: AS SHOWN
Spread:8	Map: 106 of 128



Proposed Pipeline - Sandpiper	Milepost - Sandpiper	Tract Boundary
Existing Enbridge Pipelines	Potential Block Valve	Facility Boundary
Foreign Pipes	Environmental Survey Area (ESA)	Previously Sited Facility Boundary
Transmission Lines		Section Lines
SPREAD BREAK		

500 250 0 500 1,000 Feet

DRAWN	CHECKED	APPROVED	DATE	REV NO.	DESCRIPTION
MLB			10/10/13	0	PUC Submittal

ENBRIDGE PIPELINES (NORTH DAKOTA) LLC

PROPOSED SANDPIPER PIPELINE PROJECT
ROUTE MAP
Aitkin County, MN

<small>DRAWN:</small> MLB	<small>CHECKED:</small> --
<small>DATE:</small> Oct 18, 2013	<small>SCALE:</small> AS SHOWN

Spread:8 Map: 106 of 128