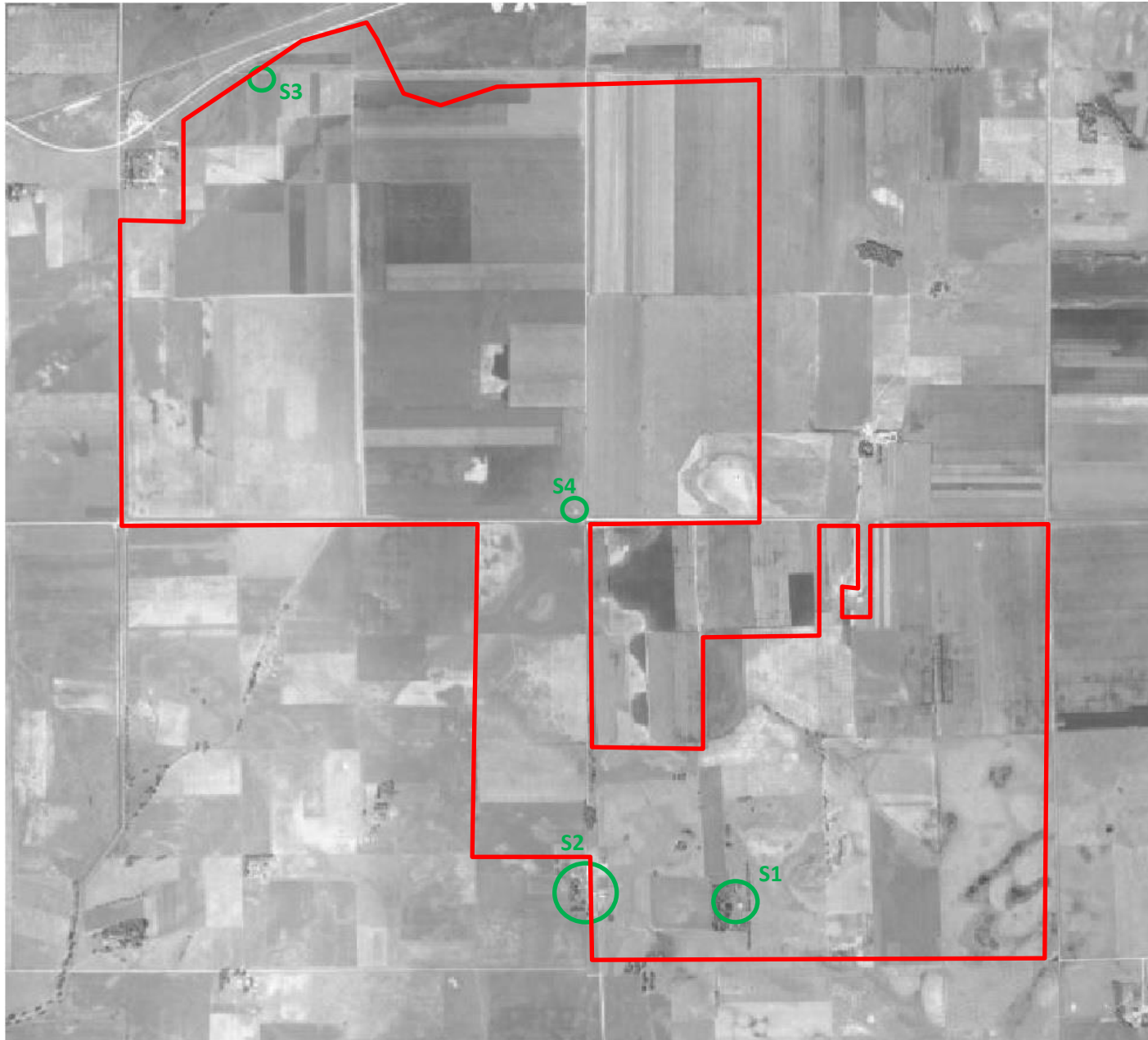
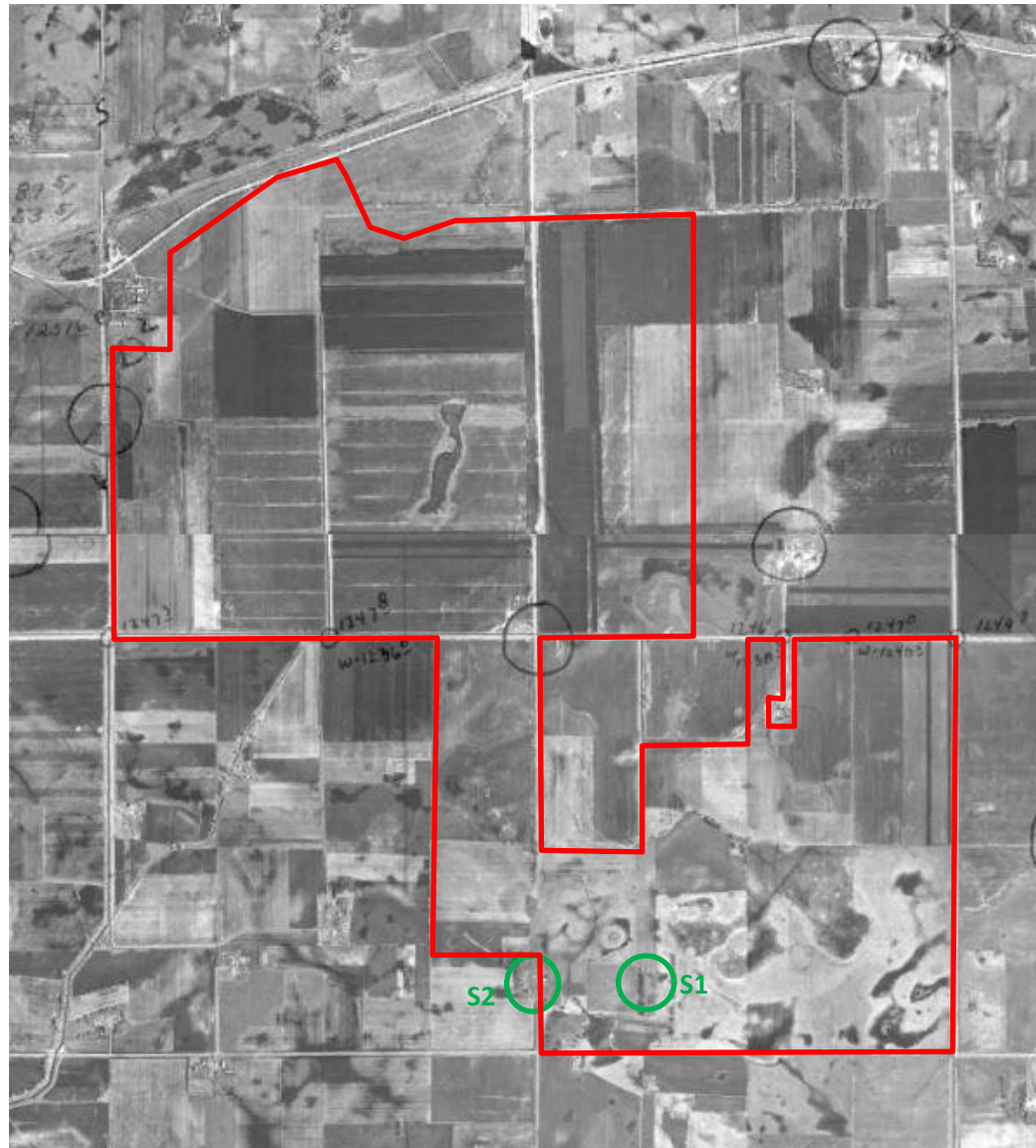


Map 3: A view of the 1895 Union Publishing Company plats for Hayward and Oakland Townships. The red outline indicates the approximate location of the Project Area. The green circles and labels indicate locations of structures within the Project Area.



Map 5: A view of 1938 aerial photograph. The red outline indicates the approximate location of the Project Area. The green circles and labels indicate the locations of structures within the Project Area.



Map 6: A view of the 1951 aerial photograph. The red outline indicates the approximate location of the Project Area. The green circles and labels indicate locations of structures within the Project Area.

APPENDIX C. PHOTO LOG



Photograph 1 (South): An overview of recently planted fields in the northwest portion of the Survey Corridor, south of County Highway 46.



Photograph 2 (South): An overview of a recently planted field and field edge in the central portion of the Survey Corridor, south of 200th Street.



Photograph 3 (West): An overview of tilled corn in the southeast portion of the Survey Corridor.



Photograph 4 (East): An overview of harvested corn in the southeast portion of the Survey Corridor.



Photograph 5 (East): An overview of a recently planted field (foreground) and a vegetated area (background) in the northwest portion of the Survey Corridor, south of County Highway 46.

APPENDIX D. UNANTICIPATED DISCOVERIES PLAN

UNANTICIPATED DISCOVERIES PLAN

Plan and Procedures Addressing Unanticipated Discoveries of Cultural Resources and Human Remains

Hayward Solar
Hayward Solar LLC
Freeborn County, Minnesota



PREPARED FOR

Hayward Solar LLC
10 East 53rd Street, 17th Floor
New York, New York 10022

Mike Roth, Project Manager

PRESENTED BY

Tetra Tech, Inc.
2001 Killebrew Drive, Suite 141
Bloomington, Minnesota 55425
(612) 643 2200

Adam Holven, Principal Investigator

I. INTRODUCTION

This document outlines the procedures Hayward Solar LLC (Hayward) will follow to prepare for and address any unanticipated discoveries of cultural resources, including archaeological sites and possible human remains. It provides direction to Project personnel and their subcontractors regarding proper procedure in response to such unanticipated discoveries during construction of Hayward Solar (the Project).

A Minnesota Public Utilities Commission (PUC) Site Permit requires that if human remains are encountered during construction, construction at that location must be halted immediately and local law enforcement and the Minnesota Office of the State Archaeologist (OSA) must be contacted. This plan demonstrates that Hayward is prepared to meet the permit conditions and complies with the Minnesota Private Cemeteries Act (MS 307.08).

II. TRAINING AND ORIENTATION

The Hayward Project Manager (PM) will provide training as part of the pre-construction on-site training program for foremen, company inspectors, and construction supervisors. The Hayward Construction Supervisor (CS) will be responsible for advising construction-contractor personnel on procedures to follow if an unanticipated discovery occurs. The CS will advise all operators of equipment involved in grading, stripping, or trenching activities to:

- A. Stop work immediately if they observe any indications of the presence of cultural materials (artifacts or other man-made features), animal bone, or possible human bone.**
- B. Contact the Hayward PM as soon as possible if the CS is not available.**
- C. Comply with the unanticipated discovery procedures.**
- D. Treat human remains with dignity and respect.**

III. PROCEDURE WHEN CULTURAL MATERIALS ARE OBSERVED

Cultural materials include (1) man-made objects (prehistoric pottery or chipped stone tools and waste flakes), (2) historic period items (items approximately 50 years old or greater such as bottle glass, can dumps, old farm equipment, etc.), (3) features (e.g., walls constructed of natural materials such as cobbles, surfaces paved by cobbles, brick, or other material), or (4) other remnants of cultural activity.

- A. Stop work in the immediate vicinity of the observed cultural materials.**
 - 1. Notify the CS of the discovery.
 - 2. If the CS believes that an unanticipated discovery has occurred:
 - a. CS directs all ground-disturbing activities to stop within a minimum of 200 feet of the discovery.
 - b. CS protects and secures the evidence in place by delineating the find with flagging or fencing.
 - c. Project activities can continue outside the delineated area of the unanticipated find.

B. Minimize the movement of vehicles and equipment in the area immediately surrounding the discovery.

C. CS immediately notifies the Hayward PM:

Name of PM: Mike Roth
Phone: (402) 938-1634
Mobile: (605) 929-0908
Email: mroth@tenaska.com

D. The Hayward PM immediately notifies the Tetra Tech Project Manager and Project Archaeologist:

Tetra Tech PM and Archaeologist: Adam Holven
Phone: (612) 643-2237
Mobile: (507) 301-1943
Email: adam.holven@tetrattech.com

E. Within 2 days, the Project Archaeologist examines the location of the discovery, accompanied by the CS.

1. If the Project Archaeologist determines that the discovery is not a cultural resource, the archaeologist immediately so advises the CS and/or the Hayward PM, each of whom has authority to remove the stop-work order. The Project Archaeologist will submit a letter report (evaluation summary) including photographs of the discovery site to Hayward PM within 10 business days.
2. If the Project Archaeologist determines that the discovery is a cultural resource, the Project Archaeologist immediately so advises the Hayward PM and CS. The Project archaeologist notifies the Minnesota SHPO and Minnesota State Archaeologist by telephone, with written confirmation by email.

Minnesota SHPO

Sarah Beimers, Environmental Review Program Manager
Minnesota Department of Administration
State Historic Preservation Office
50 Sherburne Avenue, Suite 203
St. Paul, MN 55155
Phone: (651) 201-3290
Email: sarah.beimers@state.mn.us

Minnesota State Archaeologist

Amanda Gronhovd
Office of the State Archaeologist
328 Kellogg Boulevard
St. Paul, MN 55102
Phone: (651) 201-2263
Email: amanda.gronhovd@state.mn.us

F. Notifications to Minnesota SHPO and the Minnesota State Archaeologist about observations of cultural material, and related activities include:

1. Informing the Minnesota SHPO and Minnesota State Archaeologist by telephone why the resource is not significant and requesting concurrence from the Minnesota SHPO and Minnesota State Archaeologist for construction to recommence.
2. Informing the Minnesota SHPO and Minnesota State Archaeologist about a recommended scope of work for evaluating the significance of the resource and potential effects of the Project on the resource. The scope of work will be written and submitted to the Hayward PM, Minnesota SHPO,

and Minnesota State Archaeologist within 2 business days. Upon approval by the Minnesota SHPO and Minnesota State Archaeologist during telephone consultations, cultural resource investigations may begin.

3. Inviting the Minnesota SHPO and Minnesota State Archaeologist to observe implementation of any proposed work.
4. Performing the evaluation per the agreed-upon scope of work.

G. Following completion of the evaluation of the cultural resource(s):

1. The Hayward PM and the Project Archaeologist notify the Minnesota SHPO and Minnesota State Archaeologist by telephone and discuss the potential significance of the resource.
2. As soon as possible following the field investigation, the Project Archaeologist provides the Hayward PM a written report describing the results of the fieldwork.
 - a. If the resource is believed significant and cannot be avoided by construction activities, the Project Archaeologist prepares a proposal for data recovery for submission to the Hayward PM, Minnesota SHPO, and Minnesota State Archaeologist.
 - b. If proposed mitigation measures can occur without impedance by or effect of construction, submittal to Minnesota SHPO and Minnesota State Archaeologist will be accompanied by a request for concurrence that construction in the area of the discovery may resume.

IV. PROCEDURE WHEN HUMAN REMAINS AND/OR POTENTIAL HUMAN SKELETAL MATERIALS ARE OBSERVED

Human remains are physical remains of a human body or bodies including, but not limited to: bones, teeth, hair, and preserved soft tissues (mummified or otherwise preserved). Remains may be articulated or disarticulated bones or teeth. Failure to report human remains, burial places, and/ or burial offerings is a felony under the Minnesota Private Cemeteries Act (MS 307.08).

- A. Workers are to treat all human remains with dignity and respect.**
- B. Work stops immediately in the vicinity of an unanticipated discovery of potential human remains.**
- C. The CS is notified immediately about the find.**
- D. The CS stops all ground-disturbing activities within a minimum of 200 feet of the discovery, and:**
 1. Establishes protection and security of the evidence of the discovery.
 2. Delineates the area with flagging or safety fencing.
 3. Minimizes movement of vehicles and equipment in the immediate vicinity of the discovery.
 4. Immediately notifies the Hayward PM, who in turn immediately notifies the designated contacts (see Section III C and III D for contact information).
- E. Within 2 days of the discovery, the Project Archaeologist examines the discovery to determine if the remains are likely human and have an archaeological association, and if so, whether that association is aboriginal or non-aboriginal.**
- F. If the Project Archaeologist determines that the skeletal remains are non-human and lacking archaeological association or paleontological significance, the Project Archaeologist immediately so advises the CS and/or the Hayward PM, and construction may resume. The Project archaeologist will submit a letter report including photographs of the discovery site to the Hayward PM within 10 business days.**

- G. If the skeletal remains are non-human but associated with an archaeological site, follow the steps described in Section III A through G.
- H. If the skeletal remains are possibly human, the Project archaeologist so notifies the Hayward PM and the Freeborn County Sheriff's office. The Sheriff calls the Freeborn County Coroner to determine if the remains are associated with a crime scene. If the remains are historic or prehistoric, Minnesota State Archaeologist and the Minnesota SHPO are contacted.

Freeborn County Sheriff

Kurt Freitag, Sheriff
411 Broadway Avenue S.
P.O. Box 170
Albert Lea, MN 56007
Phone: (507) 377-5205

Freeborn County Coroner

Kelly Mills
300 E. University Avenue
St. Paul, MN 55101
Phone: unlisted

Minnesota State Archaeologist

Amanda Gronhovd
Office of the State Archaeologist
328 Kellogg Boulevard
St. Paul, MN 55102
Phone: (651) 201-2263
Email: amanda.gronhovd@state.mn.us

Minnesota SHPO

Sarah Beimers, Environmental Review Program Manager
Minnesota Department of Administration
Minnesota State Historic Preservation Office
50 Sherburne Avenue, Suite 203
St. Paul, MN 55155
Phone: (651) 201-3290
Email: sarah.beimers@state.mn.us

- I. If human remains are removed by the County Sheriff, County Coroner, or Minnesota State Archaeologist, construction work will not recommence until permission is granted in writing by the Minnesota State Archaeologist and law enforcement agencies.