

- Proposed Alignment
- Proposed 160ft ROW
- Proposed Substation Area
- Commercial
- Residential
- Municipal Boundary
- Parcels
- Lands Administered by the DNR Department of Forestry
- PLS Section Line
- NWI Wetlands
- PWI Basin
- PWI Watercourse

- Barr Wetland Determination**
- Eggers & Reed Wetland Types
- Conifer swamp
- Excavated - Shrub carr
- Excavated pond
- Hardwood swamp
- Shallow open water
- Shrub carr
- Wet meadow

- T&E Species***
- Vertebrate Animal
- Community
- Invertebrate Animal
- Vascular Plant
- Nonvascular Plant; Fungus
- Animal Assemblage
- Geologic

Wetlands: National Wetland Inventory
 T&E Species: *Rare features data included here were provided by the Natural Heritage and Nongame Research Program of the Division of Ecological Services, Minnesota Department of Natural Resources (DNR), and were current as of 05/15/13

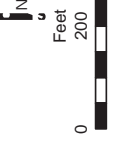


Figure 5 Detailed Route Map
 DETAILED MAPS
 Proposed Canisteo 115 kV
 HVTL and Substation
 Minnesota Power
 Itasca County, MN

Source: Esri, DeLorme, USGS, AEX, GeoEye, Geomapping, AerialGrid, IGN, ISP, and the GIS User Community

88-019-3440 88-019-4303 88-019-4313 88-019-4306
 88-019-3448 88-019-3465 88-019-3461 88-019-3462
 88-019-3487 88-019-3459 88-019-3479 88-019-3401
 88-019-3480 88-019-3477 88-019-3483 88-019-3478
 88-019-3476 88-019-3464 88-019-3485 88-019-3466
 88-019-3446 88-019-3467
 88-019-4301 88-019-4340 88-019-4357 88-019-4335
 88-019-4359 88-019-4320 88-019-4361 88-019-4351
 88-019-4336 88-019-4341 88-019-4354 88-019-4350
 88-019-4333 88-019-4352 88-019-4322 88-019-4358
 88-019-4339 88-019-4353 88-030-1252 88-030-1223
 88-030-1259 88-030-1234 88-030-1254
 88-030-1253 88-030-1260 88-030-1236
 88-030-1201 88-030-1237 88-030-1221
 88-030-1241 88-030-1240 88-030-1242
 88-019-4302 T: 56 R: 24 S: 19
 88-030-1215 88-030-1202 88-030-1213 88-030-1207 88-030-1214
 88-030-1100
 88-030-1220
 City of Coleraine
 T: 56 R: 24 S: 30
 88-030-1300
 88-030-2402 88-030-2401
 88-030-2168 88-030-2165 88-030-2164 88-030-2142 88-030-2140
 88-030-2146 88-030-2158 88-030-2127 88-030-2159 88-030-2101
 88-030-2147 88-030-2129 88-030-2157 88-030-2143 88-030-2166
 88-030-2148 88-030-2143 88-030-2100 88-030-2166