

- Not Public Document – Not For Public Disclosure
- Public Document – Not Public Data Has Been Excised
- Public Document

Xcel Energy

Information Request No. 4

Docket No.: IP-6985/WS-17-700

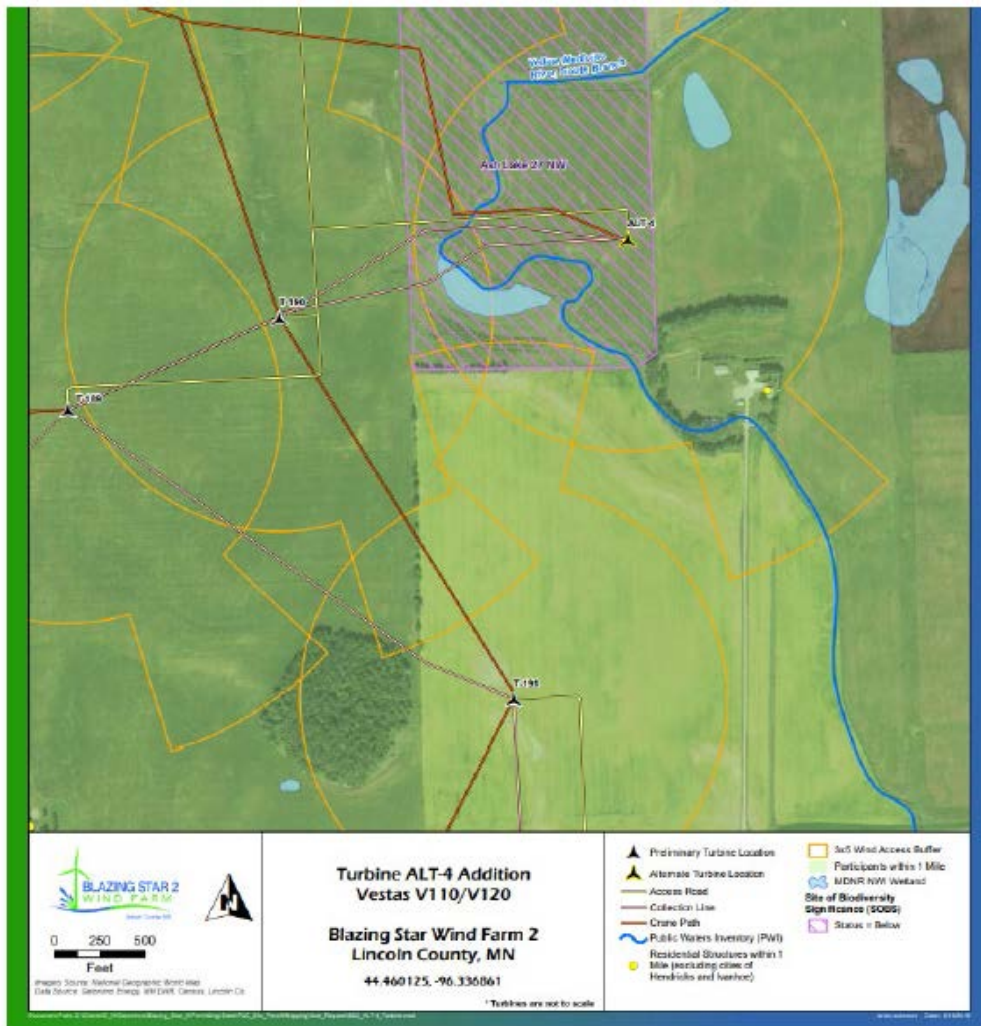
Response To: Minnesota Public Utilities Commission

Requestor: Tricia DeBleeckere

Date Received: September 5, 2019

Question:

Explain the proposal for two collector lines to turbine Alt-4 or whether one is a proposed alternative. If both are proposed, please explain the need for two collector lines. Page 3 of 9, Summary of Environmental Impacts – Xcel Reply Comments:



See:

<https://www.edockets.state.mn.us/EFiling/edockets/searchDocuments.do?method=showPoup&documentId={60F7B06C-0000-C03D-B540-BA7C0C2ED0B5}&documentTitle=20198-155334-02>

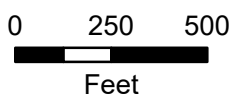
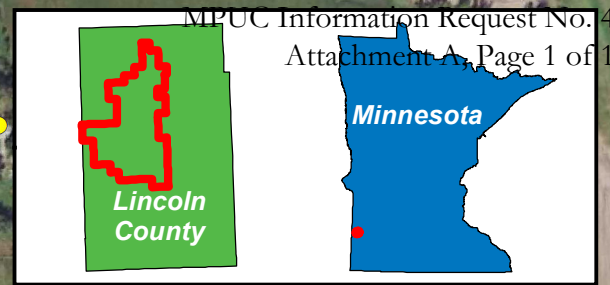
Response:

The depiction of two collector lines is an error on the map. The northern alignment would be used as the collector line route, as shown in the attached, corrected map.

We will submit a supplement to the Permit Amendment Application reflecting this proposed change.

---

Preparer: Matt Langan  
Title: Principal Agent  
Department: Siting and Land Rights  
Telephone: 612-330-6954  
Date: September 16, 2019



Imagery Source: National Geographic World Map  
 Data Source: Geronimo Energy, MN DNR, Census, Lincoln Co.

**Turbine ALT-4 Addition  
 Vestas V110/V120**

**Blazing Star Wind Farm 2  
 Lincoln County, MN**

44.460125, -96.336861

\* Turbines are not to scale

- Preliminary Turbine Location
- Alternate Turbine Location
- Access Road
- Collection Line
- Crane Path
- Public Waters Inventory (PWI)
- Residential Structures within 1 Mile (excluding cities of Hendricks and Ivanhoe)
- 3x5 Wind Access Buffer
- Participants within 1 Mile
- MDNR NWI Wetland