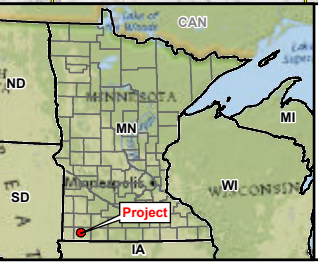
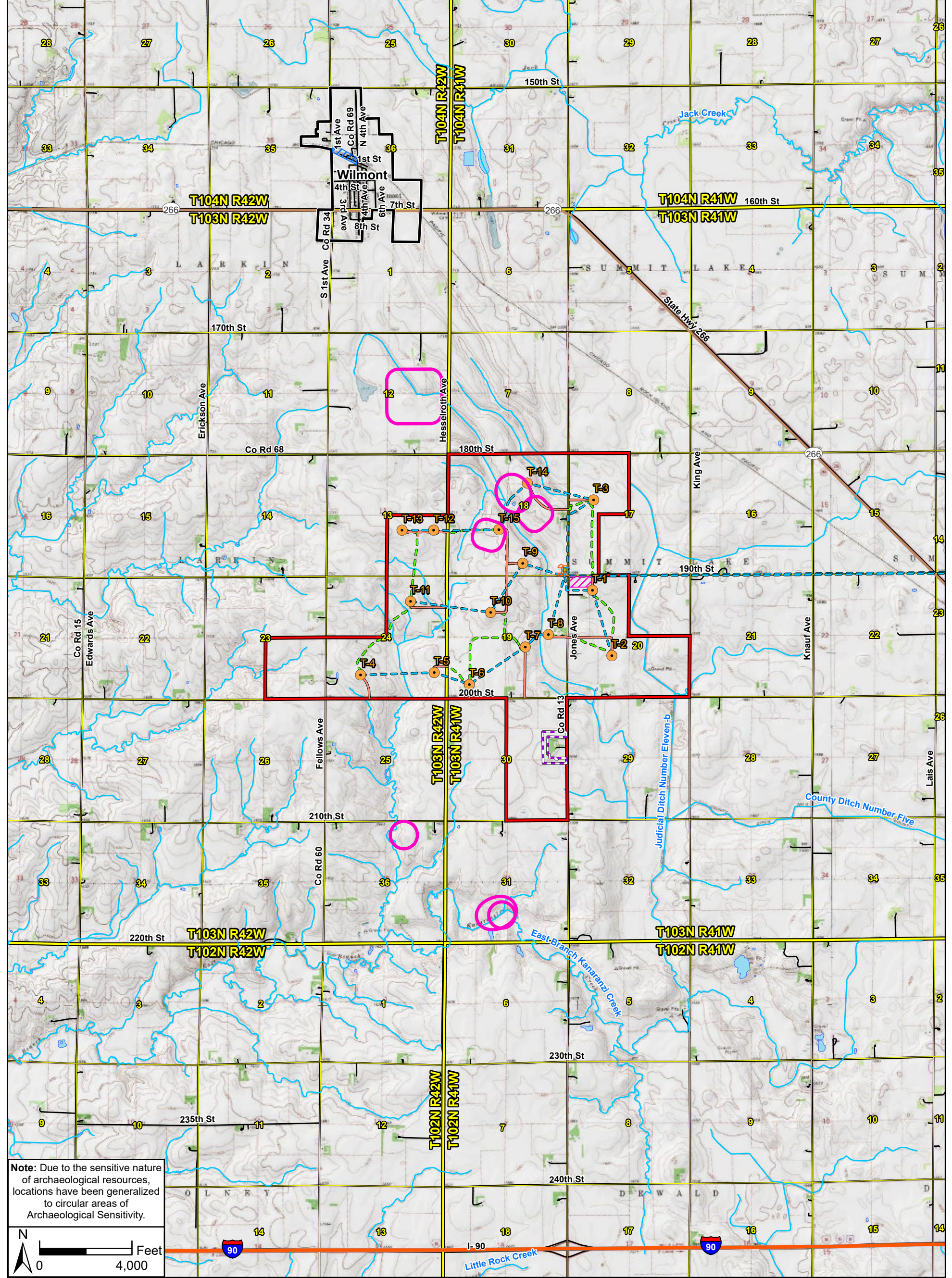


Data Source(s): Westwood (2021); ESRI WMS USA Topo & National Geographic Basemaps (Accessed 2021); USGS NHD Dataset (2013); ESRI (2021); MnDOT (2016).



Legend	
	Project Boundary
	Municipal Boundary
	County Boundary
	AADT Count
	Major Highway
	Major Road
	PLS Section Boundary
	PLS Township Boundary

Community Wind South Repower Project
Nobles County, Minnesota
Annual Average Daily Traffic (AADT)
Map 9



Note: Due to the sensitive nature of archaeological resources, locations have been generalized to circular areas of Archaeological Sensitivity.

0 4,000 Feet

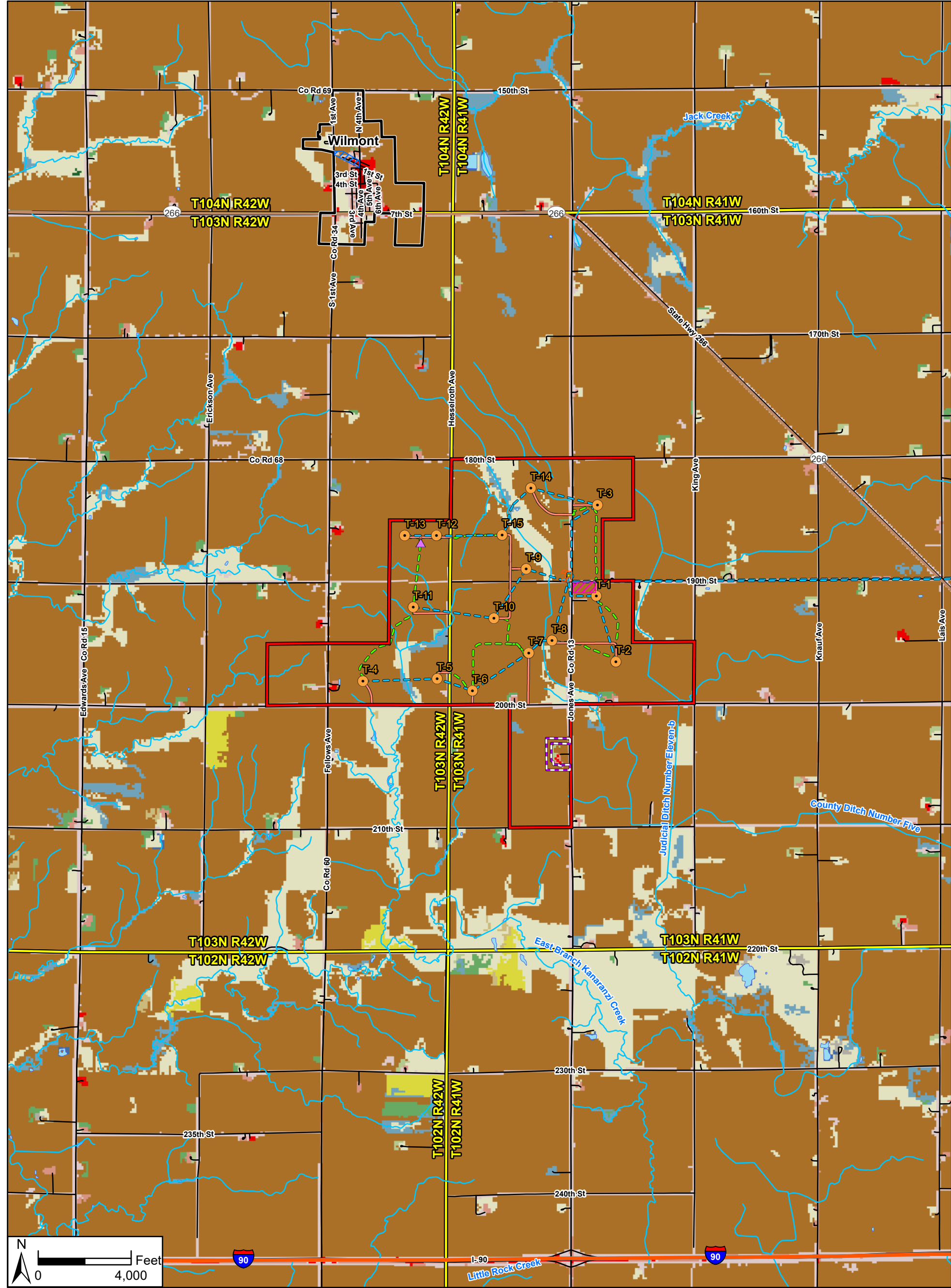
Data Source(s): Westwood (2021); ESRI WMS USA Topo Basemap (Accessed 2021); ESRI (2021); USGS NHD Dataset (2013); Census Bureau (2015).

- Legend**
- Turbine
 - Area of Archaeological Sensitivity
 - Existing Access Road
 - Collection
 - Crane Path
 - Project Substation
 - Laydown/Storage Yard 1
 - Laydown/Storage Yard 2
 - Laydown/Storage Yard 3
 - Potential ADLS Location
 - Major Highway
 - Major Road
 - Minor Road
 - Project Boundary
 - Municipal Boundary
 - County Boundary
 - PLS Township Boundary
 - PLS Section Boundary
 - NHD Flowline
 - NHD Waterbody

Community Wind South Repower Project

Nobles County, Minnesota

Previously Recorded Cultural Resources



Data Source(s): Westwood (2021); USGS NHD Dataset (2013); ESRI (2021); Census Bureau (2015); U.S. Geological Survey (2011).

Legend

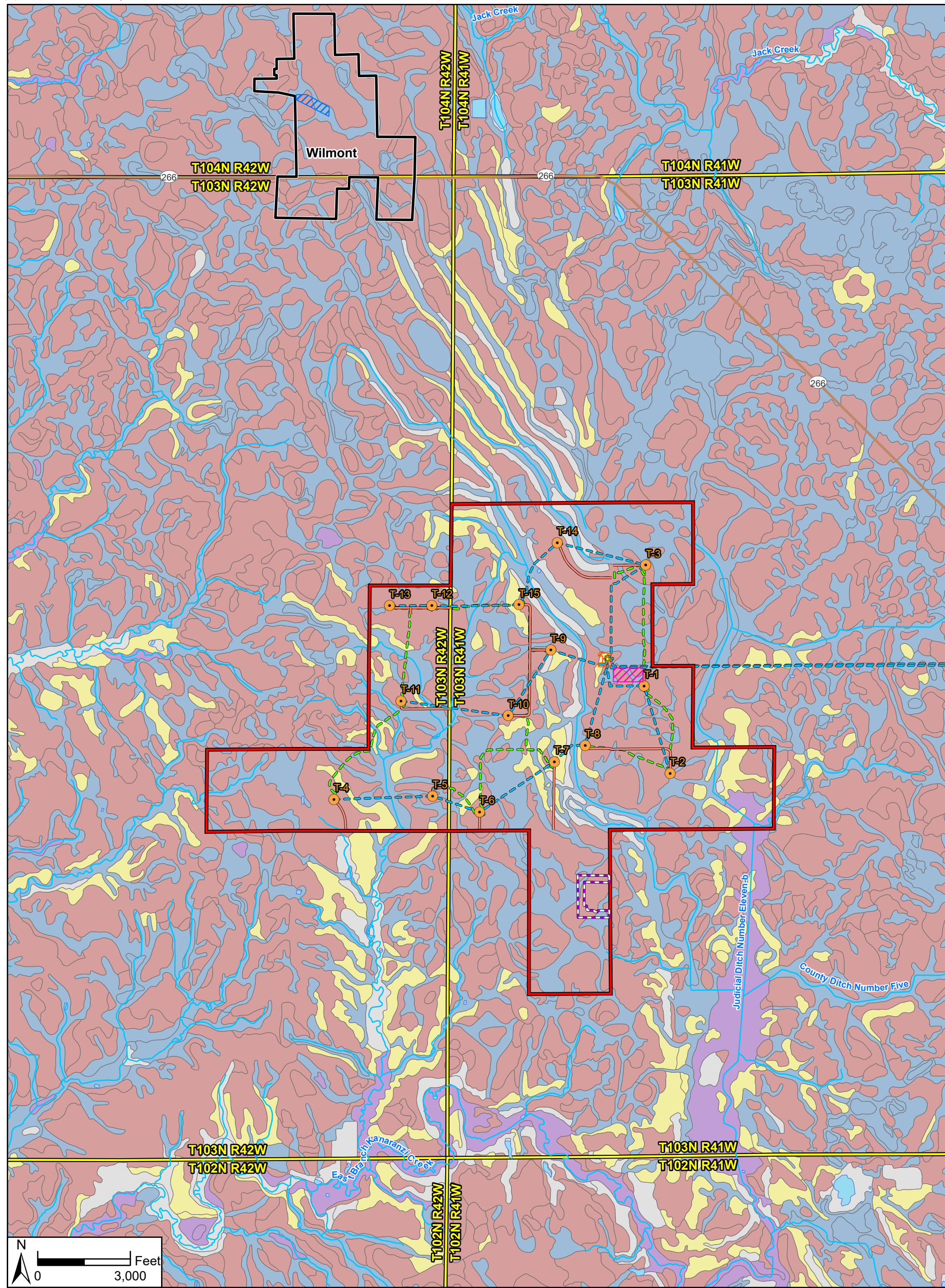
- Turbine
- ▲ MET Tower
- Existing Access Road
- Collection
- Crane Path
- Project Substation
- Laydown/Storage Yard 1
- Laydown/Storage Yard 2
- Laydown/Storage Yard 3
- Potential ADLS Location
- County Boundary
- NHD Flowline
- NHD Waterbody
- Major Highway
- Major Road
- Minor Road
- Project Boundary
- Municipal Boundary
- PLS Township Boundary
- Land Cover (% within project area)**
- Open Water (0%)
- Developed, Open Space (5.8%)
- Developed, Low Intensity (0.34%)
- Developed, Medium Intensity (0.1%)
- Developed, High Intensity (0%)
- Barren Land (Rock/Sand/Clay) (0%)
- Deciduous Forest (0.25%)
- Evergreen Forest (0%)
- Mixed Forest (0.23%)
- Shrub/Scrub (0%)
- Grassland/Herbaceous (6.2%)
- Pasture/Hay (0%)
- Cultivated Crops (86%)
- Woody Wetlands (0%)
- Emergent Herbaceous Wetlands (1.2%)

**Community Wind South
Repower Project**
Nobles County, Minnesota

Land Cover



Toll Free (888) 937-5150 westwoodps.com
Westwood Professional Services, Inc.



Data Source(s): Westwood (2021); USGS NHD Dataset (2013); ESRI (2021); Census Bureau (2015); U.S. Geological Survey (2011); U.S. Department of Agriculture, Natural Resources Conservation Service (2017).

Legend

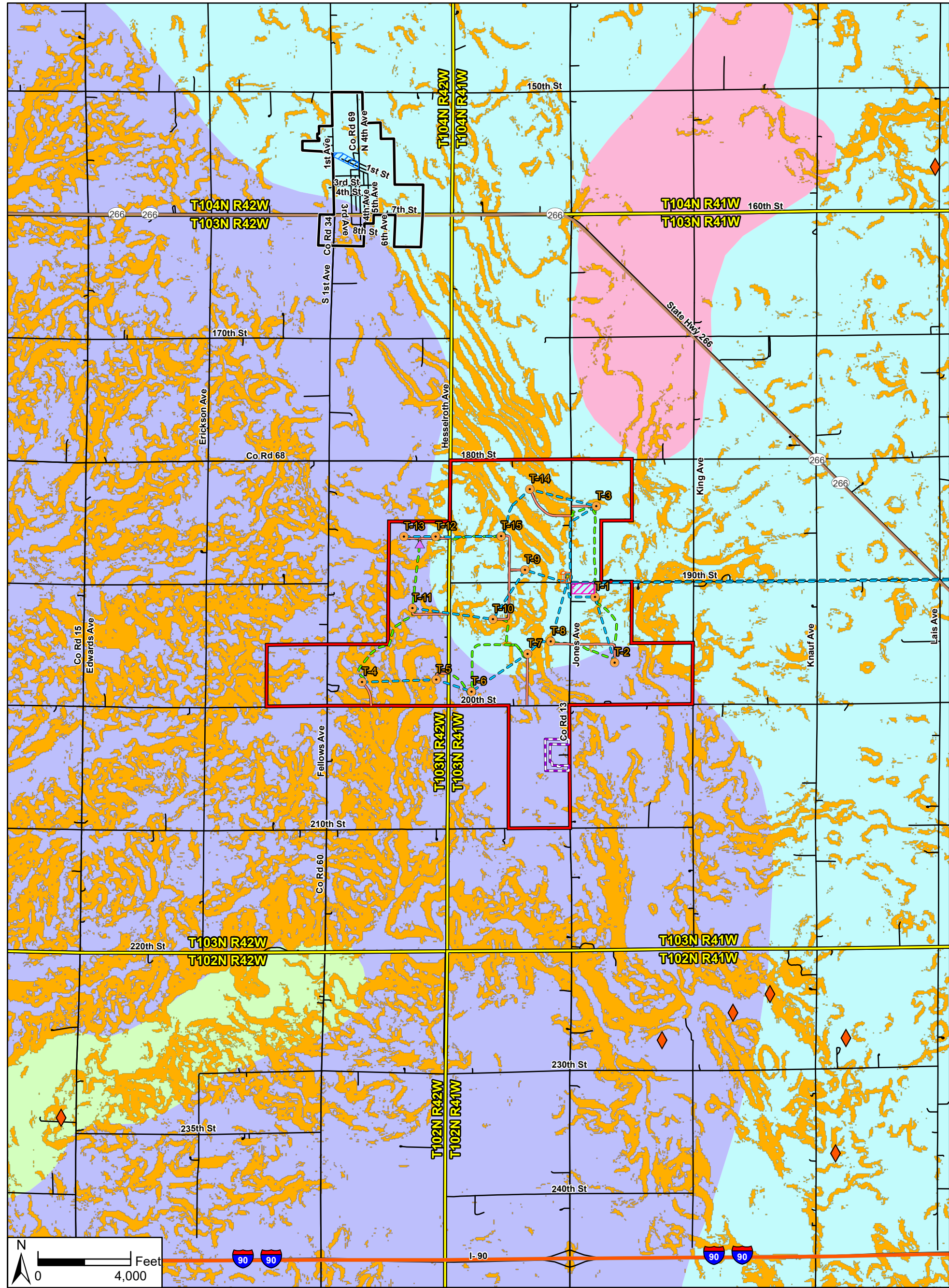
- Turbine
- Existing Access Road
- Collection
- Crane Path
- Project Substation
- Laydown/Storage Yard 1
- Laydown/Storage Yard 2
- Laydown/Storage Yard 3
- Potential ADLS Location
- Major Highway
- Major Road
- Minor Road
- NHD Flowline
- NHD Waterbody
- Municipal Boundary
- County Boundary
- PLS Township Boundary
- PLS Section Boundary

- Project Boundary
- Prime Farmland Classification (% Within Project Area)**
- All areas are prime farmland (55.36%)
- Farmland of statewide importance (6.29%)
- Not prime farmland (8.22%)
- Prime farmland if drained (28.16%)
- Prime farmland if protected from flooding or not frequently flooded during the growing season (1.97%)

Community Wind South Repower Project

Nobles County, Minnesota

Prime Farmland



Data Source(s): Westwood (2021); Geospatial Data Gateway (various dates); ESRI (2021); Census Bureau (2015); Natural Resources Conservation Service (2010); U.S. Geological Survey (2011).

Legend

- Turbine
- MET Tower
- Existing Access Road
- Collection
- Crane Path
- Laydown/Storage Yard 1
- Laydown/Storage Yard 2
- Laydown/Storage Yard 3
- Project Substation
- Potential ADLS Location
- Gravel Pits
- Major Highway
- Major Road
- Road
- Steep Slope (>10%)
- Municipal Boundary
- Project Boundary
- PLS Township Boundary
- PLS Section Boundary
- Spillville-Millington-Comfrey (s3553)
- Webster-Nicollet-Clarion-Canisteo (s1750)
- Webster-Nicollet-Glencoe-Crippin-Canisteo (s3557)
- Wilmonton-Letri-Everly (s3714)

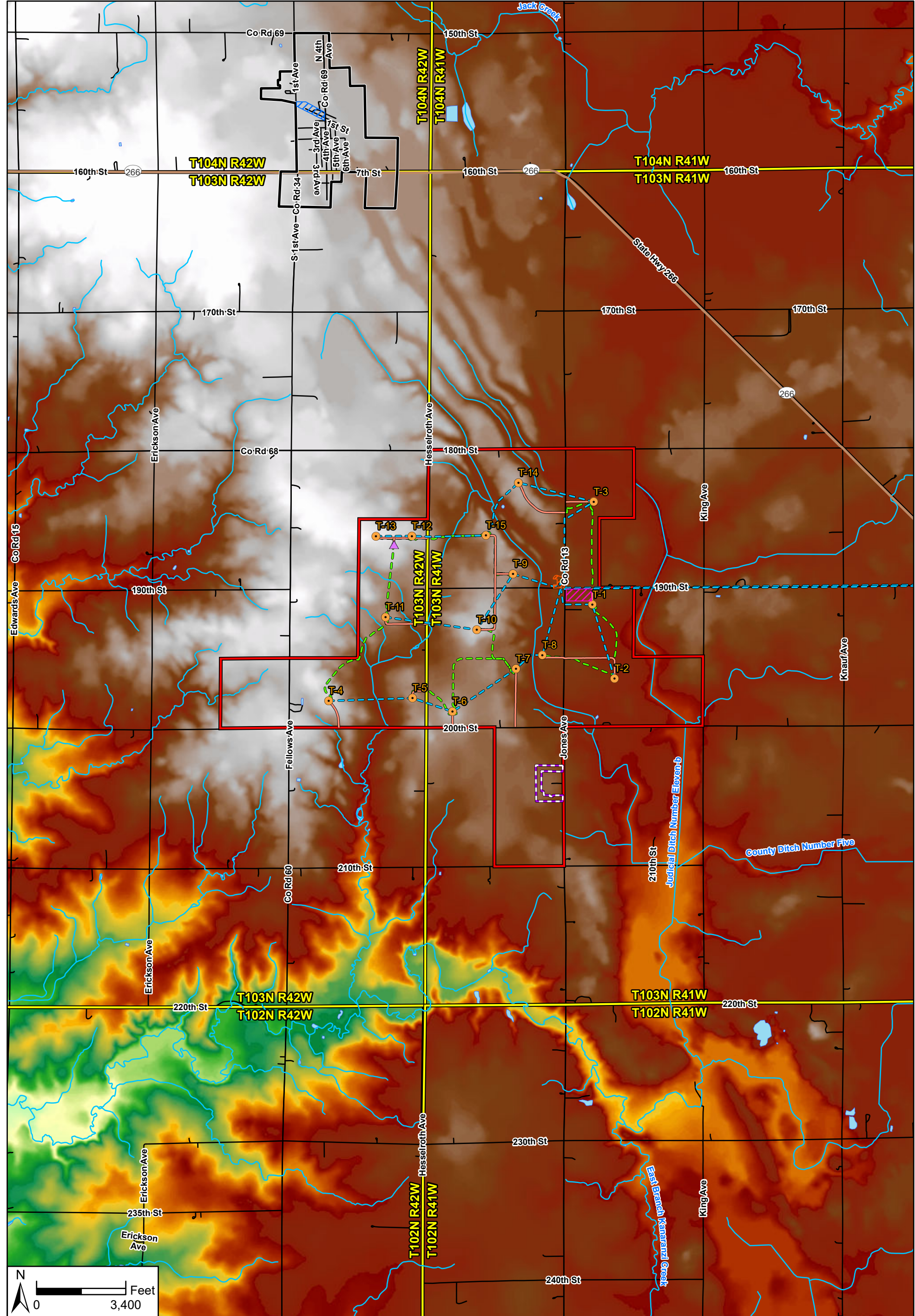
Community Wind South Repower Project

Nobles County, Minnesota

Soils and Mining Resources

Westwood

Toll Free (888) 937-5150 westwoodps.com
Westwood Professional Services, Inc.



Data Source(s): Westwood (2021); USGS NHD Dataset (2013); ESRI (2021); Census Bureau (2015); MNTOP0 (Accessed 2021).

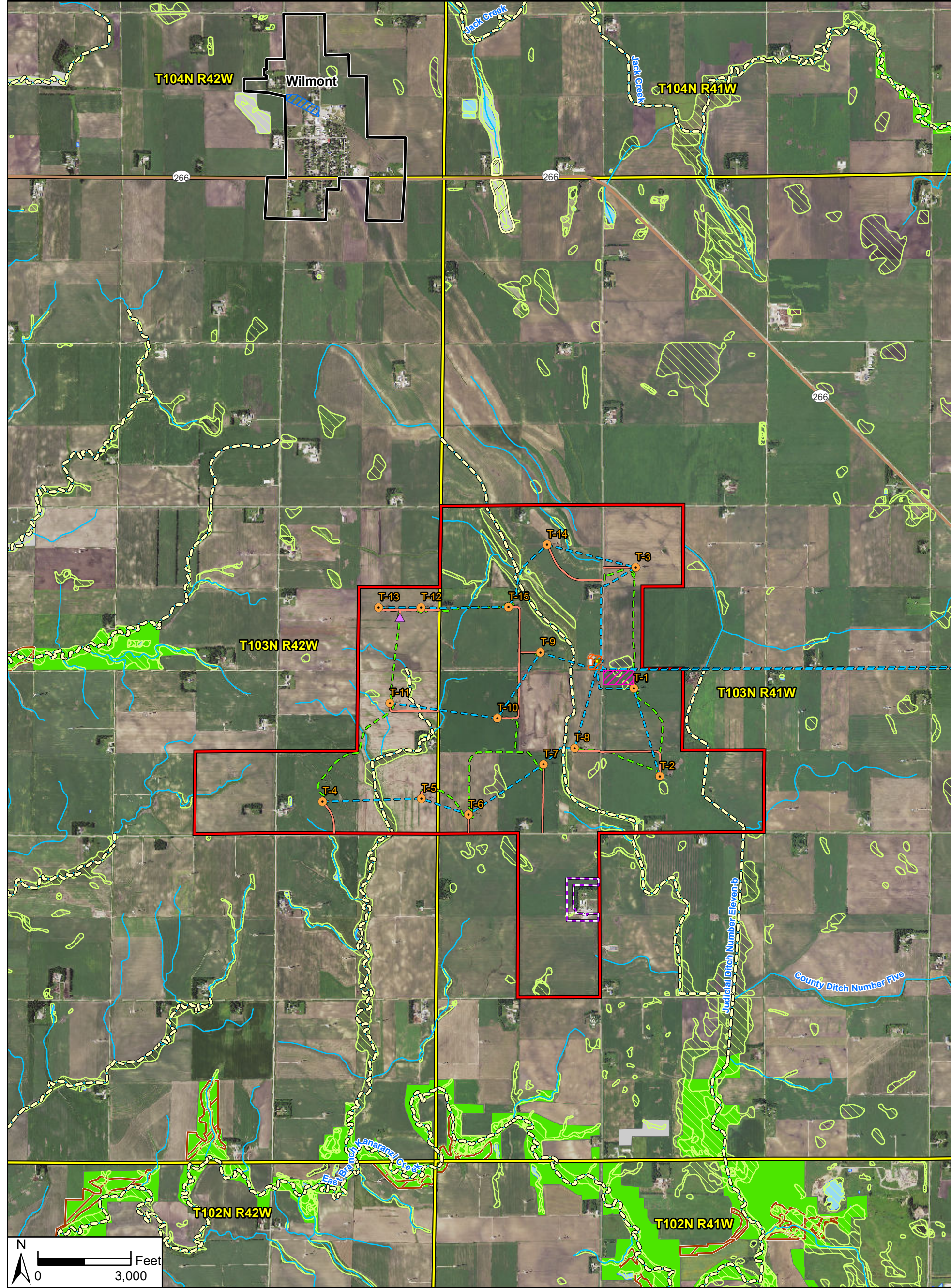


- | | | | |
|--|--|---|---|
| <ul style="list-style-type: none"> Turbine MET Tower Existing Access Road Collection Crane Path Project Substation | <ul style="list-style-type: none"> Laydown/Storage Yard 1 Laydown/Storage Yard 2 Laydown/Storage Yard 3 Potential ADLS Location Project Boundary | <ul style="list-style-type: none"> Major Highway Major Road Minor Road NHD Flowline NHD Waterbody County Boundary | <ul style="list-style-type: none"> Municipal Boundary PLS Township Boundary <p>Elevation</p> <ul style="list-style-type: none"> High : 1,793 ft Low : 1,491 ft |
|--|--|---|---|

Community Wind South Repower Project

Nobles County, Minnesota

Digital Elevation



Data Source(s): Westwood (2021); MnGeo WMS (2018); ESRI (2021); MNDNR (Various Dates); NED (2016); Ducks Unlimited, and St. Mary's University of Minnesota (2015); USGS NHD Dataset (2013); Census Bureau (2015).

Legend

- | | | | |
|---------------------------|----------------------|----------------------------|---|
| ● Turbine | ■ Project Substation | ■ 100-Year FEMA Floodplain | □ PLS Section Boundary |
| ▲ MET Tower | ■ Major Highway | ■ Native Plant Community | ■ MBS Site of Moderate Biodiversity Significance |
| — Existing Access Road | — Major Road | ■ NWI Wetland | ■ MBS Site of High Biodiversity Significance |
| — Collection | — Minor Road | ■ Project Boundary | ■ MBS Site of Outstanding Biodiversity Significance |
| — Crane Path | — PWI Watercourse | ■ Municipal Boundary | ■ MBS Site Below Biodiversity Significance |
| ■ Laydown/Storage Yard 1 | ■ PWI Basin | ■ County Boundary | |
| ■ Laydown/Storage Yard 2 | — NHD Flowline | ■ PLS Township Boundary | |
| ■ Laydown/Storage Yard 3 | ■ NHD Waterbody | | |
| ■ Potential ADLS Location | | | |

Community Wind South Repower Project
Nobles County, Minnesota

Water Features and Rare Features