

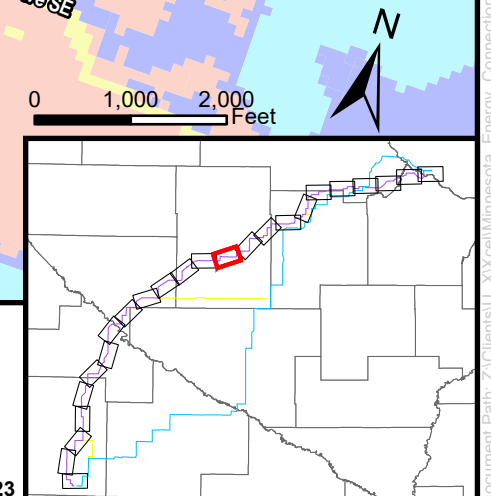
Purple Route Land Use Maps

Minnesota Energy Connection
Kandiyohi County | Page 11



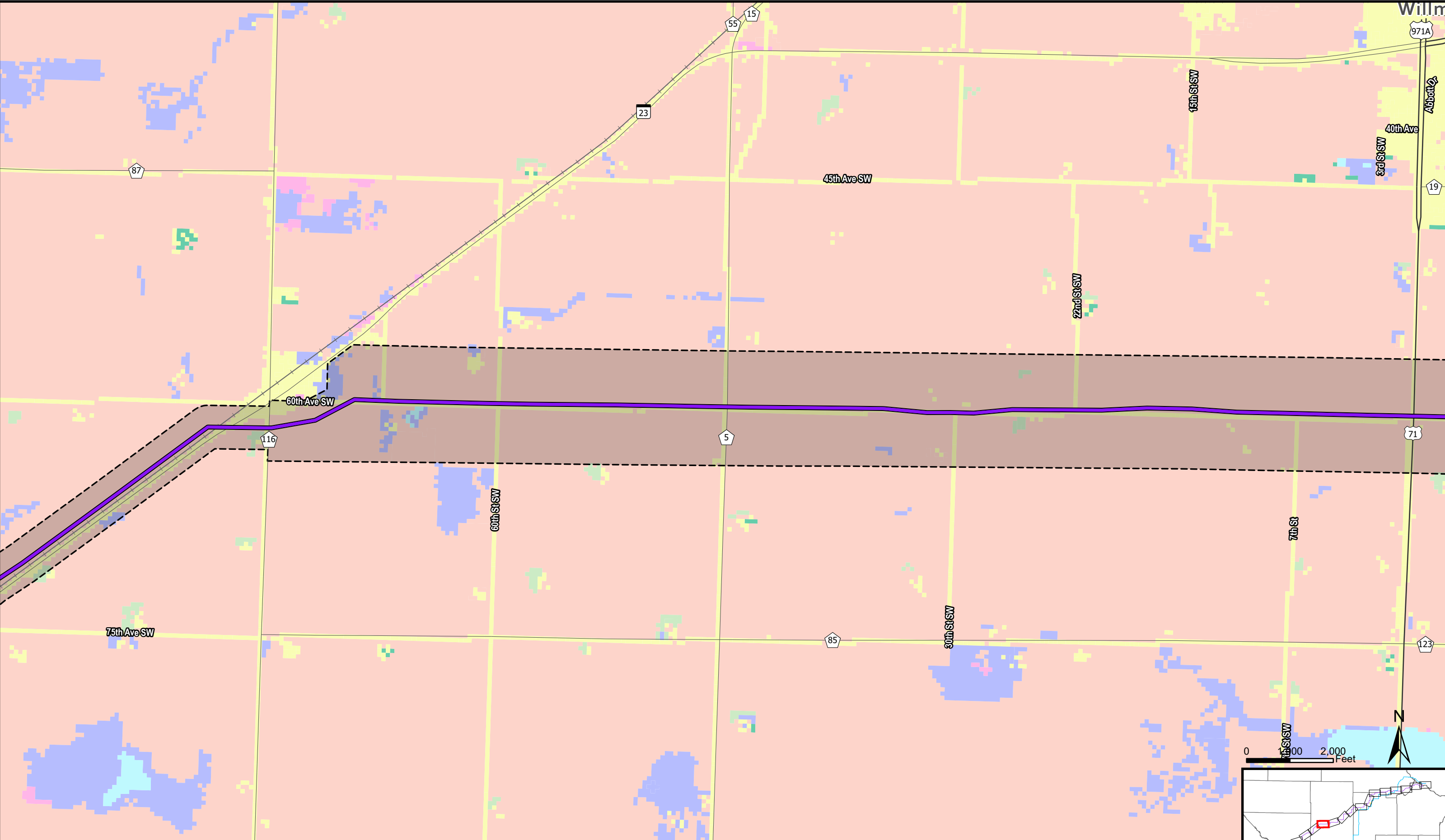
DISCLAIMER: This information is believed to be correct but is subject to change and is not warranted.

- | | | | |
|--------------------|-------------------------|-------------------|----------------------|
| Substation | Green Segment | Agricultural Land | Forested Lands |
| Blue Route | Proposed Route Corridor | Developed Areas | Non-forested Uplands |
| Purple Route | Municipality | Wetlands | Open Water |
| Connector Segments | County Boundary | | Barren Land |



Document Path: Z:\Clients\U_X\Acad\Minnesota_Energy_Connection\Permitting\State\Forms_Permit_Application\Figures\Figures.aprx

Date: 10/19/2023



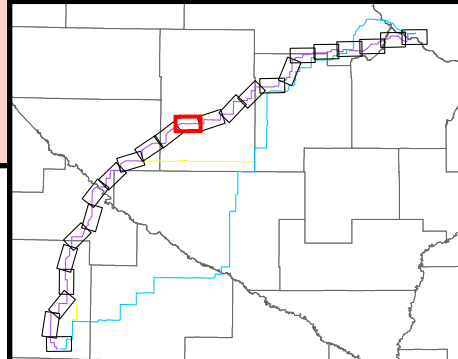
Purple Route Land Use Maps

Minnesota Energy Connection
Kandiyohi County | Page 12



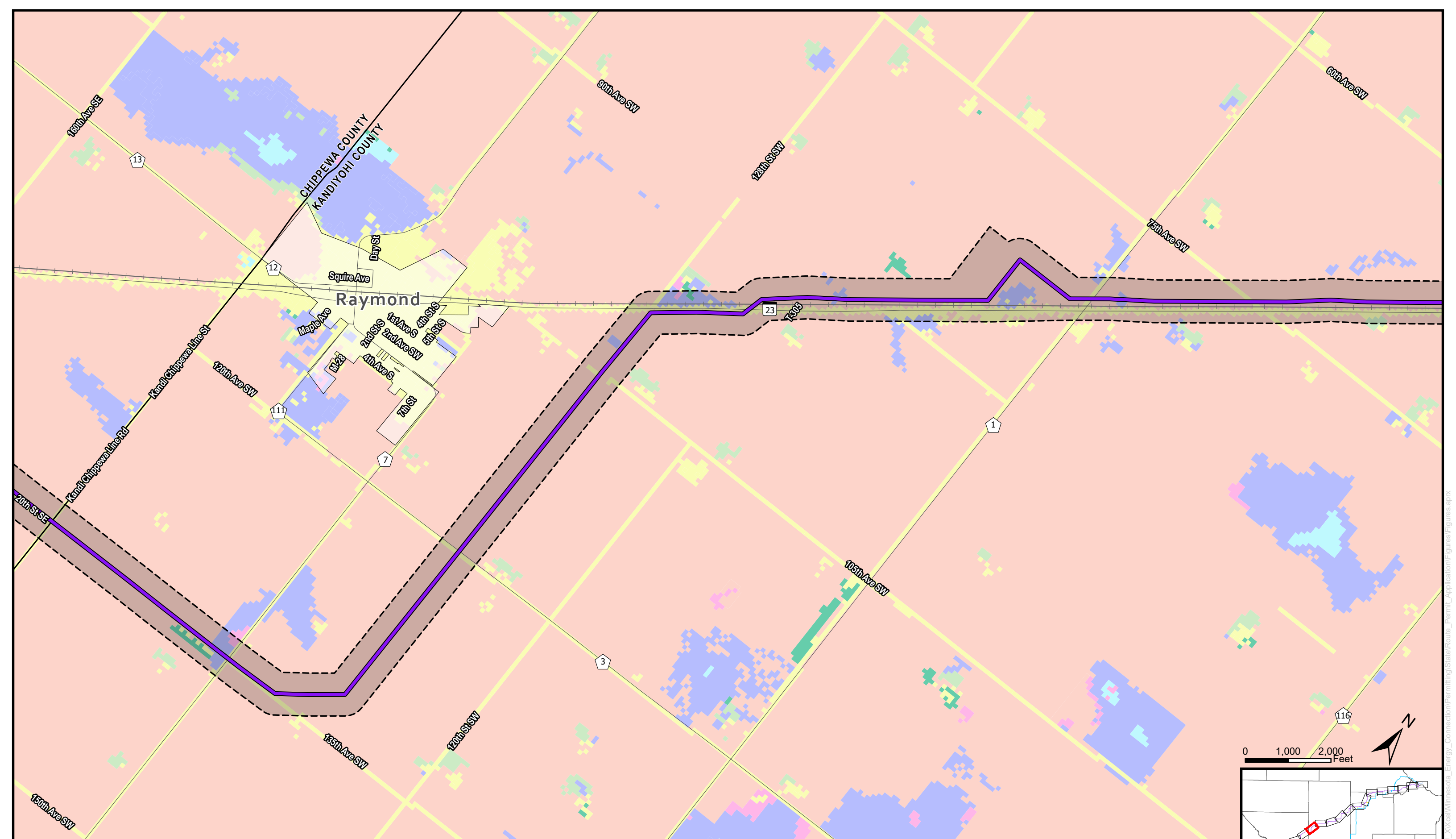
DISCLAIMER: This information is believed to be correct but is subject to change and is not warranted.

- | | | | |
|--------------------|-------------------------|-------------------|----------------|
| Substation | Green Segment | Agricultural Land | Forested Lands |
| Blue Route | Proposed Route Corridor | Developed Areas | Open Water |
| Purple Route | Municipality | Wetlands | Barren Land |
| Connector Segments | County Boundary | | |



Date: 10/19/2023

Document Path: Z:\Clients\U_Xcel\Willm\Minnesota_Energy_Connection\Permitting\States\For\re_Permit_Application\Figures\Figures.aprx



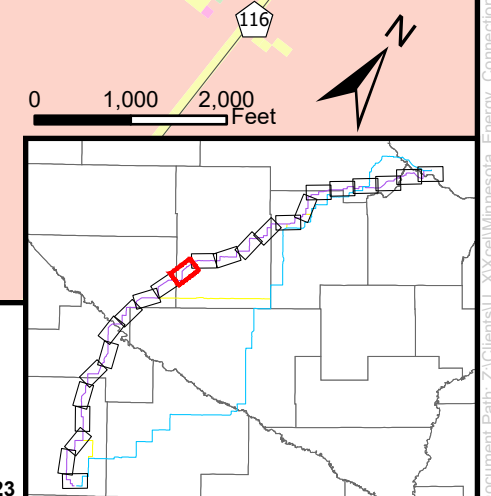
Purple Route Land Use Maps

Minnesota Energy Connection
Kandiyohi County | Page 13



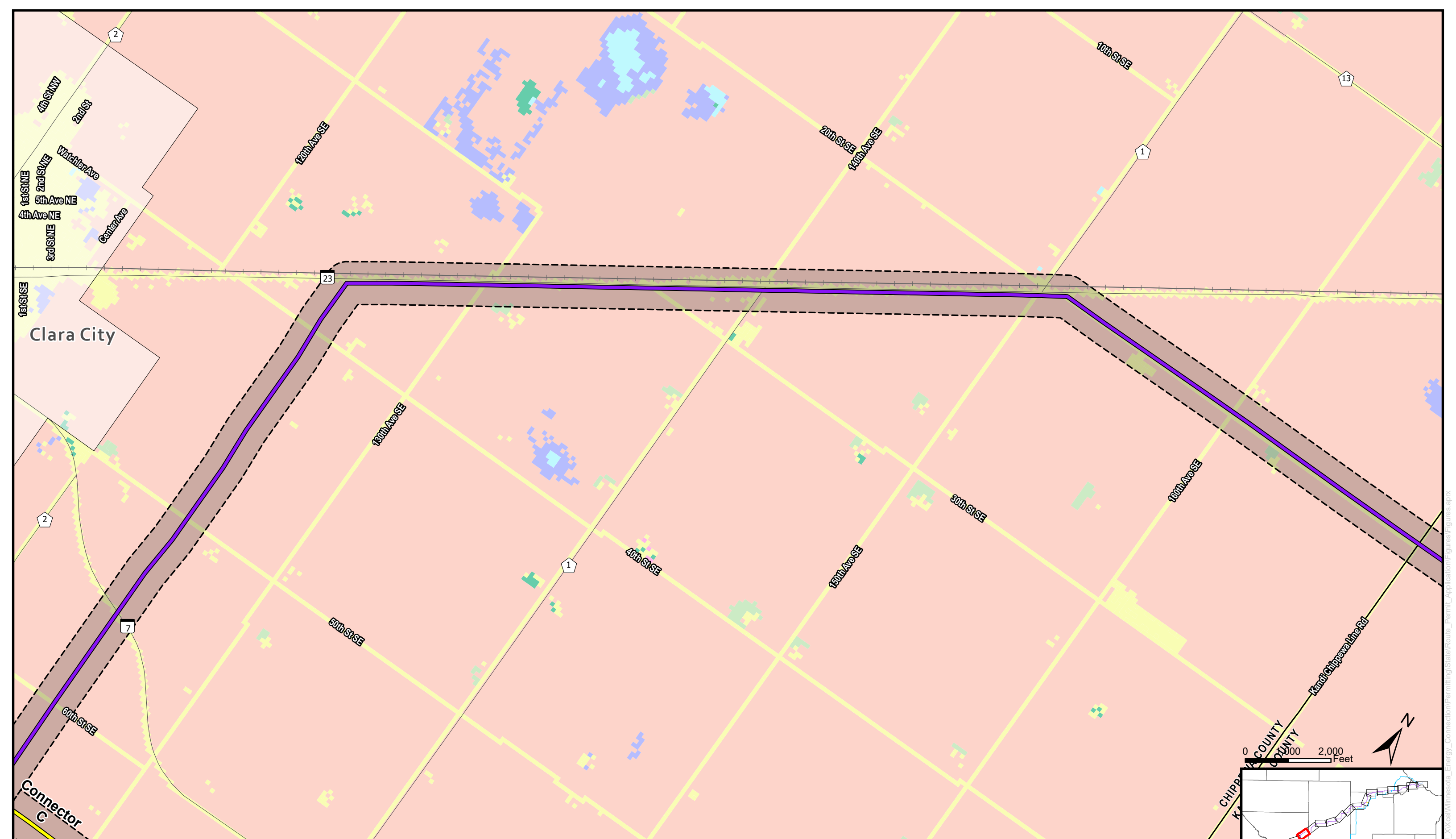
DISCLAIMER: This information is believed to be correct but is subject to change and is not warranted.

- | | | | |
|--------------------|-------------------------|-------------------|----------------------|
| Substation | Green Segment | Agricultural Land | Forested Lands |
| Blue Route | Proposed Route Corridor | Developed Areas | Non-forested Uplands |
| Purple Route | Municipality | Wetlands | Open Water |
| Connector Segments | County Boundary | | Barren Land |



Document Path: Z:\Clients\U_X\Acct\Minnesota_Energy_Connection\Permitting\State\Permit_Figure_116_Application\Figures\Figures.aprx

Date: 10/19/2023



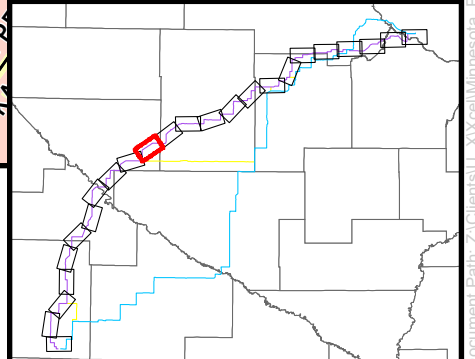
Purple Route Land Use Maps

Minnesota Energy Connection
Chippewa County | Page 14



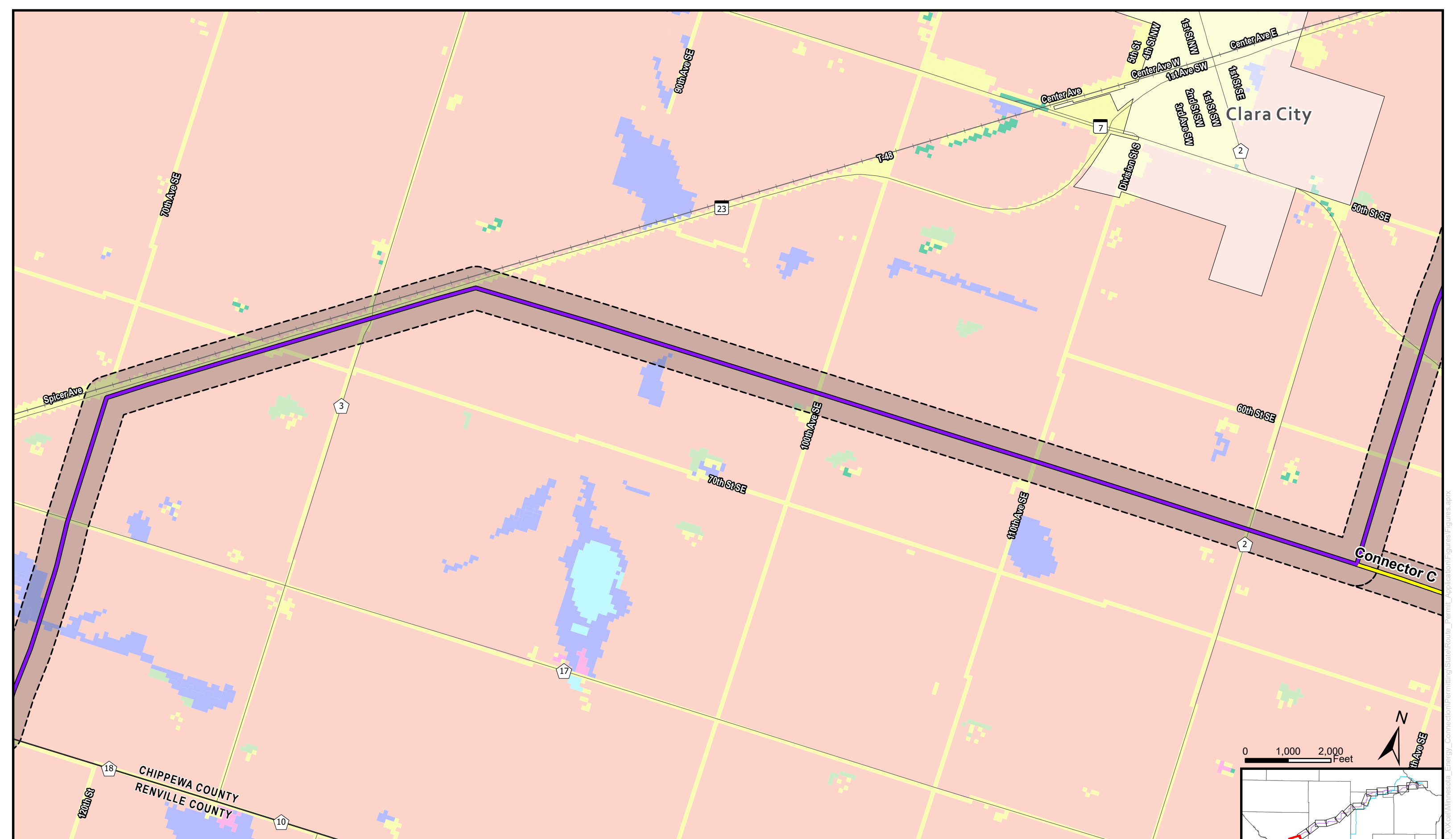
DISCLAIMER: This information is believed to be correct but is subject to change and is not warranted.

- | | | | |
|--------------------|-------------------------|-------------------|----------------------|
| Substation | Green Segment | Land Use (NLCD) | Forested Lands |
| Blue Route | Proposed Route Corridor | Agricultural Land | Non-forested Uplands |
| Purple Route | Municipality | Developed Areas | Open Water |
| Connector Segments | County Boundary | Wetlands | Barren Land |



Date: 10/19/2023

Document Path: Z:\Clients\U_A\Acad\Illinois\Energy_Connection\Permitting\State\State_Fermit_Application\Figures\Figures.aprx



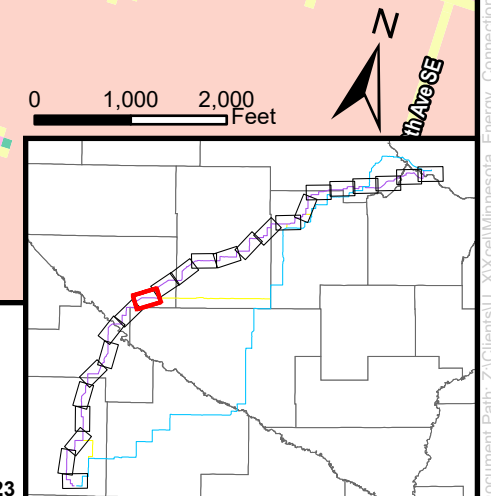
Purple Route Land Use Maps

Minnesota Energy Connection
Chippewa County | Page 15



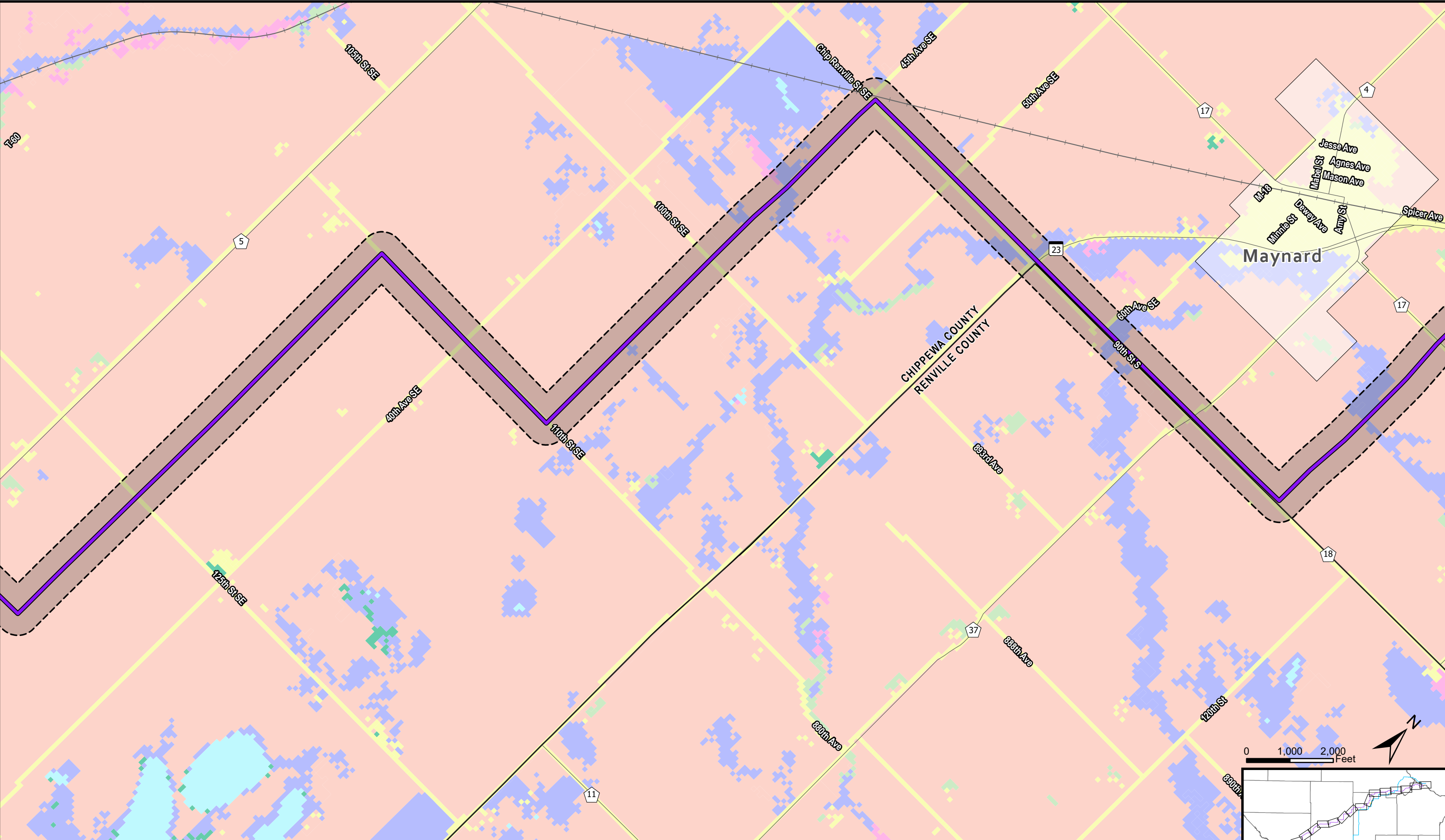
DISCLAIMER: This information is believed to be correct but is subject to change and is not warranted.

- | | | | |
|--------------------|-------------------------|-------------------|----------------------|
| Substation | Green Segment | Agricultural Land | Forested Lands |
| Blue Route | Proposed Route Corridor | Developed Areas | Non-forested Uplands |
| Purple Route | Municipality | Wetlands | Open Water |
| Connector Segments | County Boundary | Barren Land | |



Document Path: Z:\Clients\U_X\Acad\Minnesota_Energy_Connection\Permitting\State\Permits_Permit_Application\Figures\Figures.aprx

Date: 10/19/2023

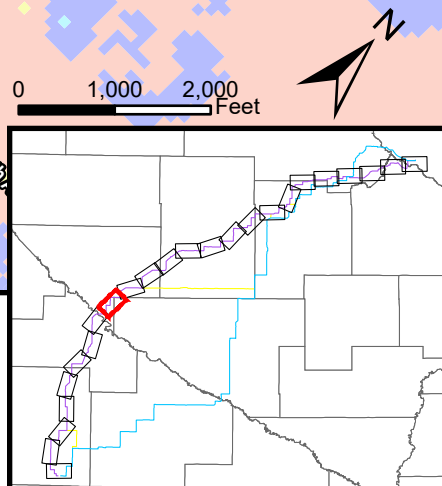


Purple Route Land Use Maps
 Minnesota Energy Connection
 Chippewa and Renville Counties | Page 16



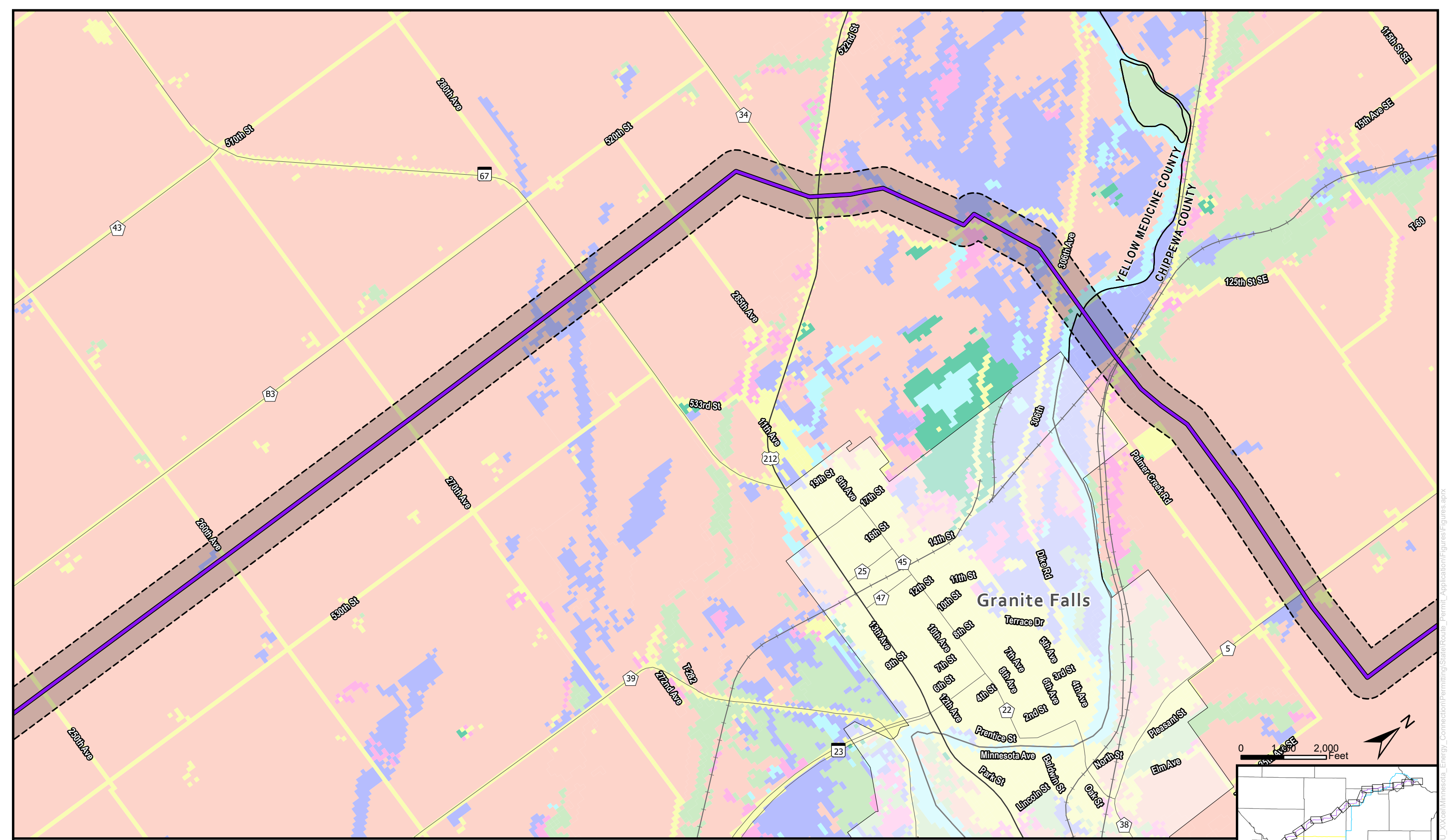
DISCLAIMER: This information is believed to be correct but is subject to change and is not warranted.

- | | | | |
|--------------------|-------------------------|--------------------------------------|----------------------|
| Substation | Green Segment | Land Use (NLCD)
Agricultural Land | Forested Lands |
| Blue Route | Proposed Route Corridor | Developed Areas | Non-forested Uplands |
| Purple Route | Municipality | Wetlands | Open Water |
| Connector Segments | County Boundary | | Barren Land |



Date: 10/19/2023

Document Path: Z:\Clients\U_Xcel\Illinois_Energy_Connection\Permitting\States\Permits_Permit_Application\Figures\Figures.aprx



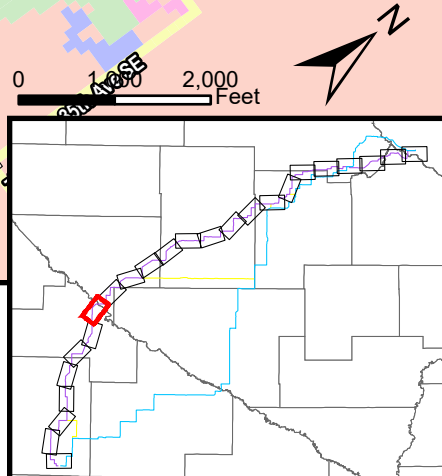
Purple Route Land Use Maps

Minnesota Energy Connection
Chippewa and Yellow Medicine Counties | Page 17



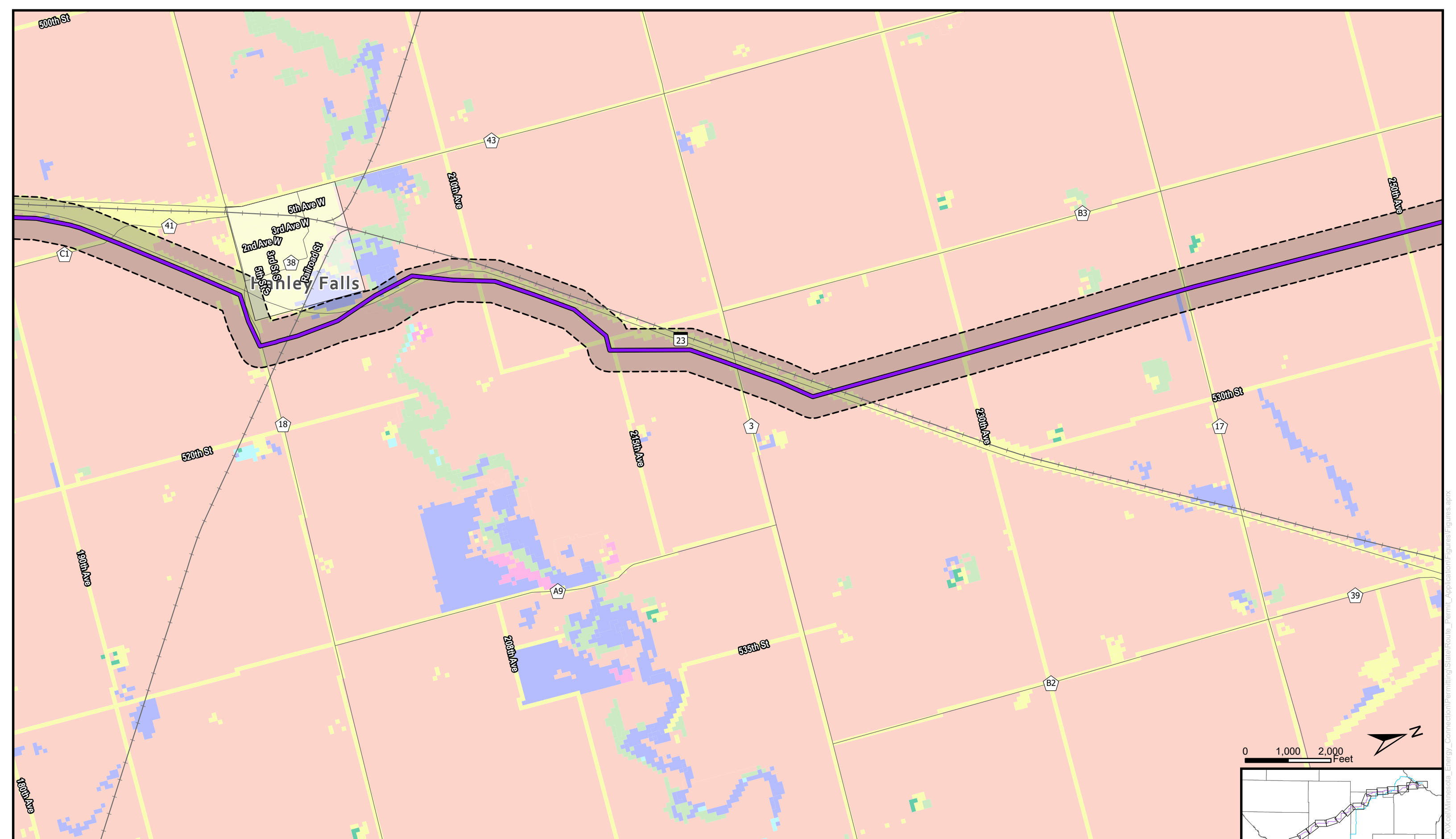
DISCLAIMER: This information is believed to be correct but is subject to change and is not warranted.

- | | | | |
|--------------------|-------------------------|-------------------|----------------------|
| Substation | Green Segment | Land Use (NLCD) | Forested Lands |
| Blue Route | Proposed Route Corridor | Agricultural Land | Non-forested Uplands |
| Purple Route | Municipality | Developed Areas | Open Water |
| Connector Segments | County Boundary | Wetlands | Barren Land |



Date: 10/19/2023

Document Path: Z:\Clients\U_Xcel\Illinois_Energy_Connection\Permitting\Statewide_Fermi_C_Application\Figures\Figures.aprx



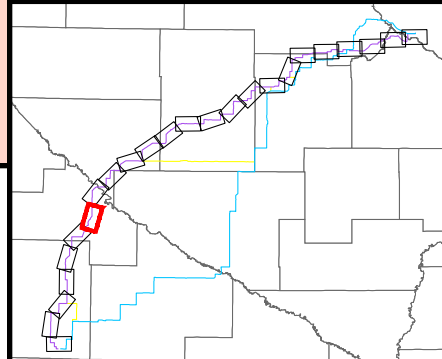
Purple Route Land Use Maps

Minnesota Energy Connection
 Yellow Medicine County | Page 18



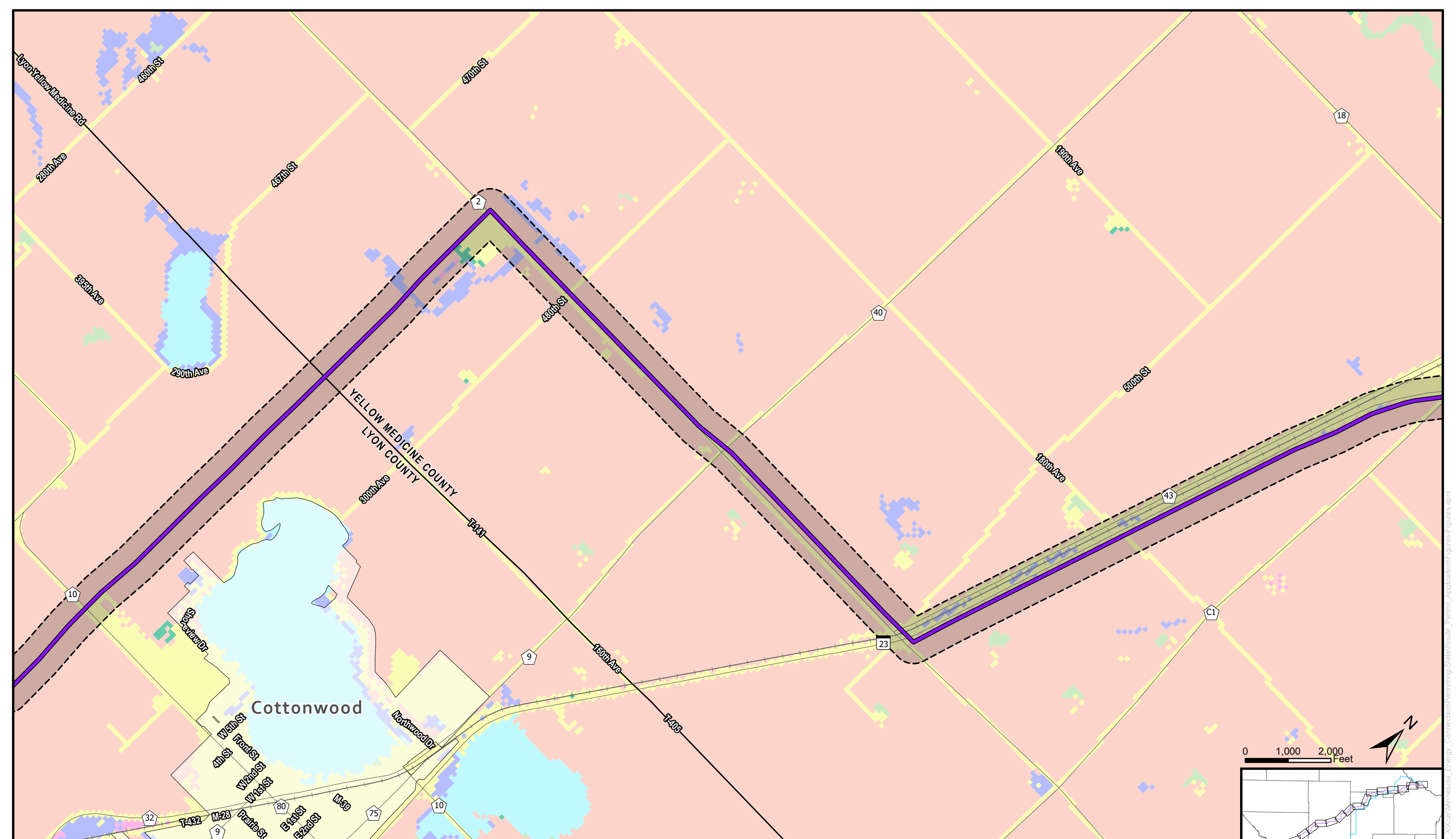
DISCLAIMER: This information is believed to be correct but is subject to change and is not warranted.

- | | | | |
|--------------------|-------------------------|-------------------|----------------------|
| Substation | Green Segment | Agricultural Land | Forested Lands |
| Blue Route | Proposed Route Corridor | Developed Areas | Non-forested Uplands |
| Purple Route | Municipality | Wetlands | Open Water |
| Connector Segments | County Boundary | | Barren Land |



Document Path: Z:\Clients\U_Xcel\Illinois_Energy_Connection\Permitting\State\Permits_Permit_Application\Figures\Figures.aprx

Date: 10/19/2023



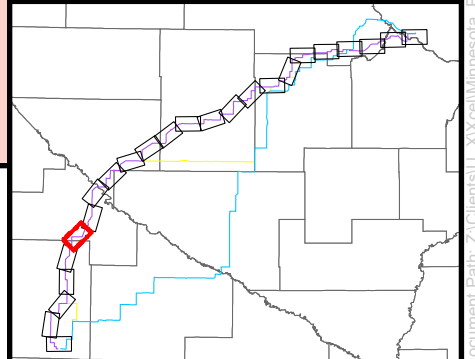
Purple Route Land Use Maps

Minnesota Energy Connection
 Lyon and Yellow Medicine Counties | Page 19



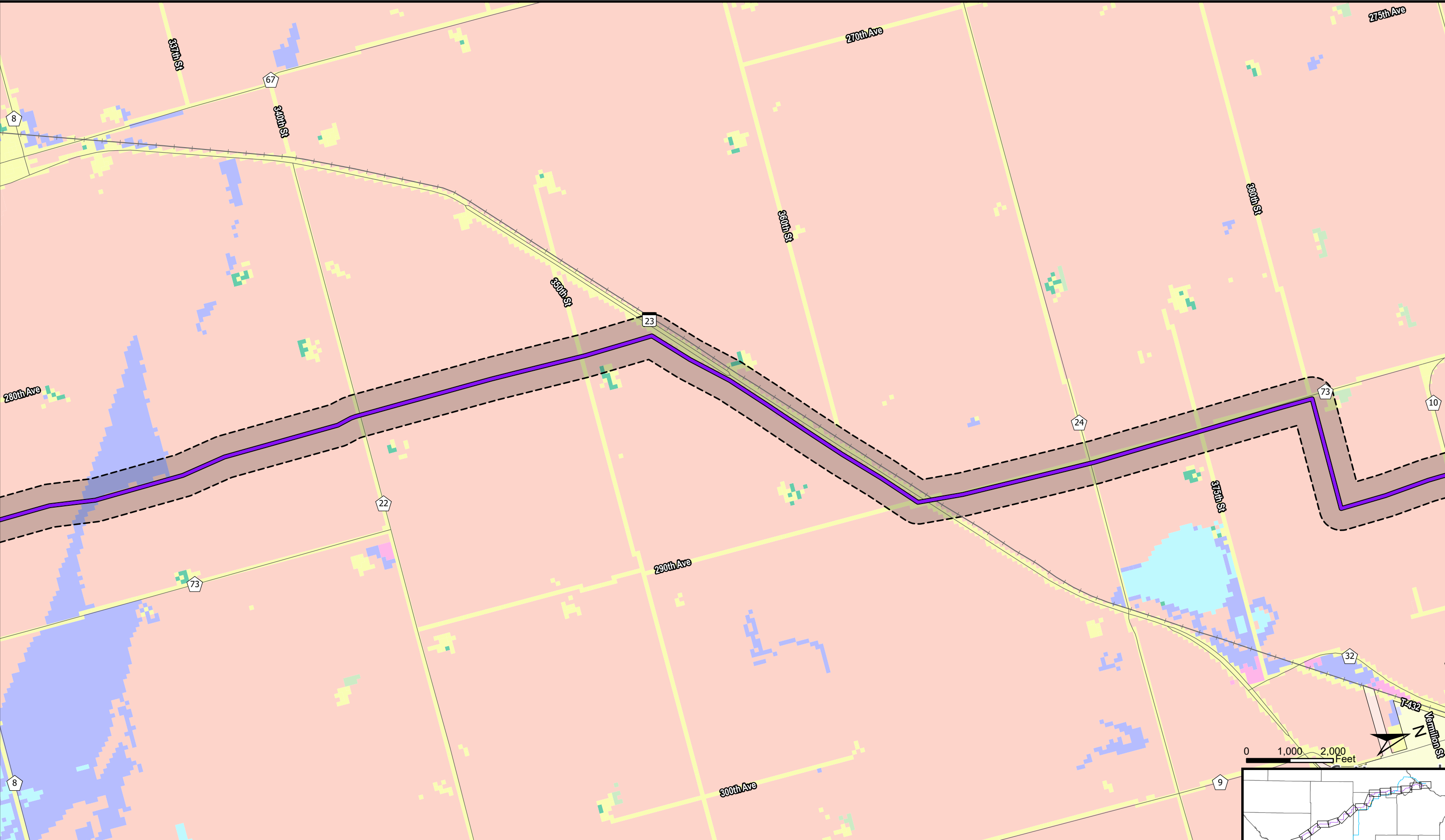
DISCLAIMER: This information is believed to be correct but is subject to change and is not warranted.

- | | | | |
|--------------------|-------------------------|-------------------|----------------------|
| Substation | Green Segment | Agricultural Land | Forested Lands |
| Blue Route | Proposed Route Corridor | Developed Areas | Non-forested Uplands |
| Purple Route | Municipality | Wetlands | Open Water |
| Connector Segments | County Boundary | | Barren Land |



Date: 10/19/2023

Document Path: Z:\Clients\U_A\Xcel\Minnesota_Energy_Connection\Permitting\States\re_Permit_Application\Figures\Figures.aprx



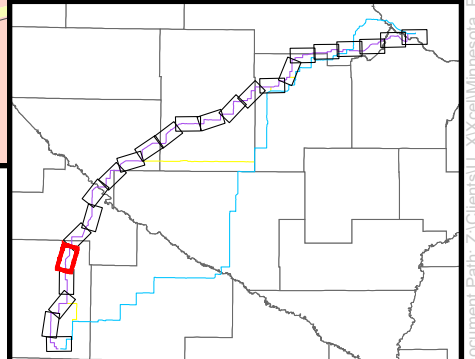
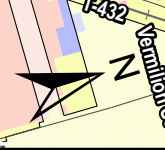
Purple Route Land Use Maps

Minnesota Energy Connection
Lyon County | Page 20



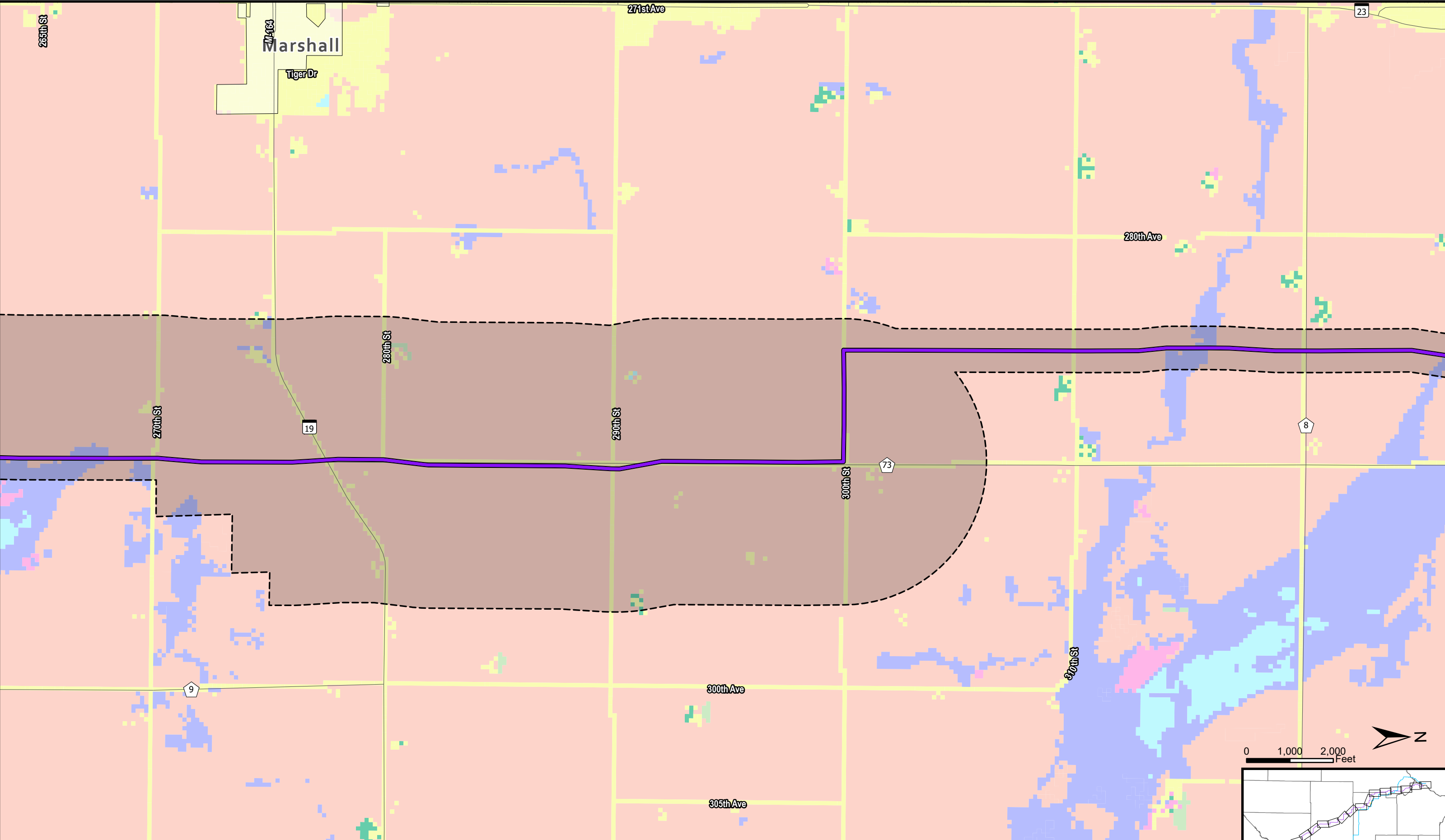
DISCLAIMER: This information is believed to be correct but is subject to change and is not warranted.

- | | | | |
|--------------------|-------------------------|-------------------|----------------------|
| Substation | Green Segment | Land Use (NLCD) | Forested Lands |
| Blue Route | Proposed Route Corridor | Agricultural Land | Non-forested Uplands |
| Purple Route | Municipality | Developed Areas | Open Water |
| Connector Segments | County Boundary | Wetlands | Barren Land |



Date: 10/19/2023

Document Path: Z:\Clients\U_Xcel\Illinois_Energy_Connection\Permitting\State\Permit_Application\Figures.aprx



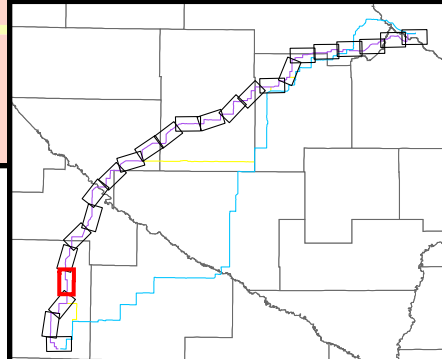
Purple Route Land Use Maps

Minnesota Energy Connection
Lyon County | Page 21



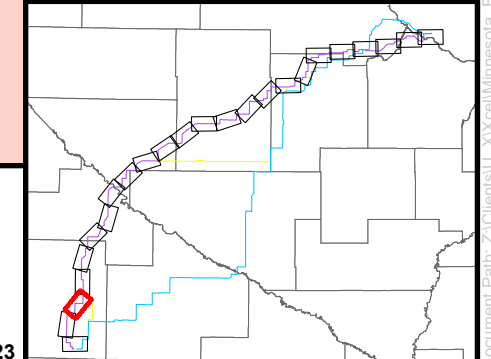
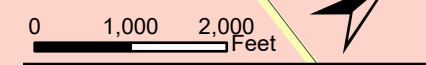
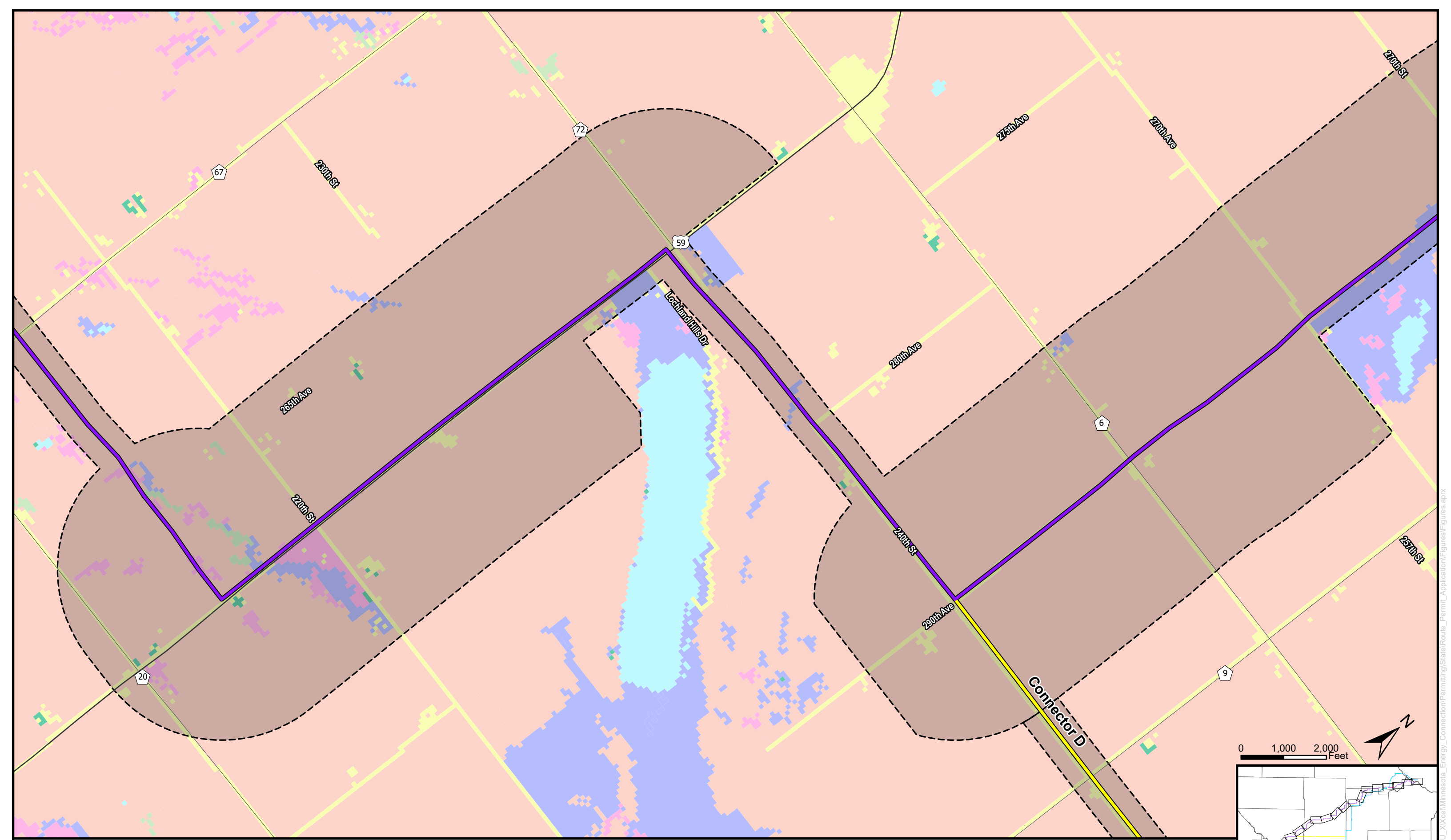
DISCLAIMER: This information is believed to be correct but is subject to change and is not warranted.

- | | | | |
|--------------------|-------------------------|-------------------|----------------------|
| Substation | Green Segment | Agricultural Land | Forested Lands |
| Blue Route | Proposed Route Corridor | Developed Areas | Non-forested Uplands |
| Purple Route | Municipality | Wetlands | Open Water |
| Connector Segments | County Boundary | Barren Land | |



Document Path: Z:\Clients\U_Xcel\Minnesota_Energy_Connection\Permitting\State\Permits_Permit_Application\Figures\Figures.aprx

Date: 10/19/2023



Purple Route Land Use Maps

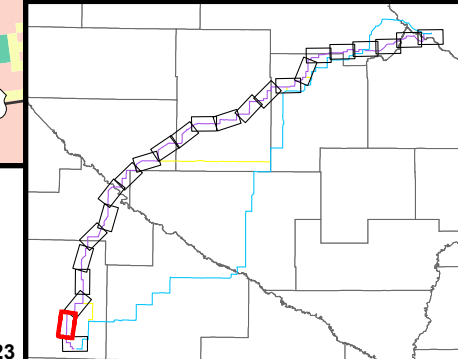
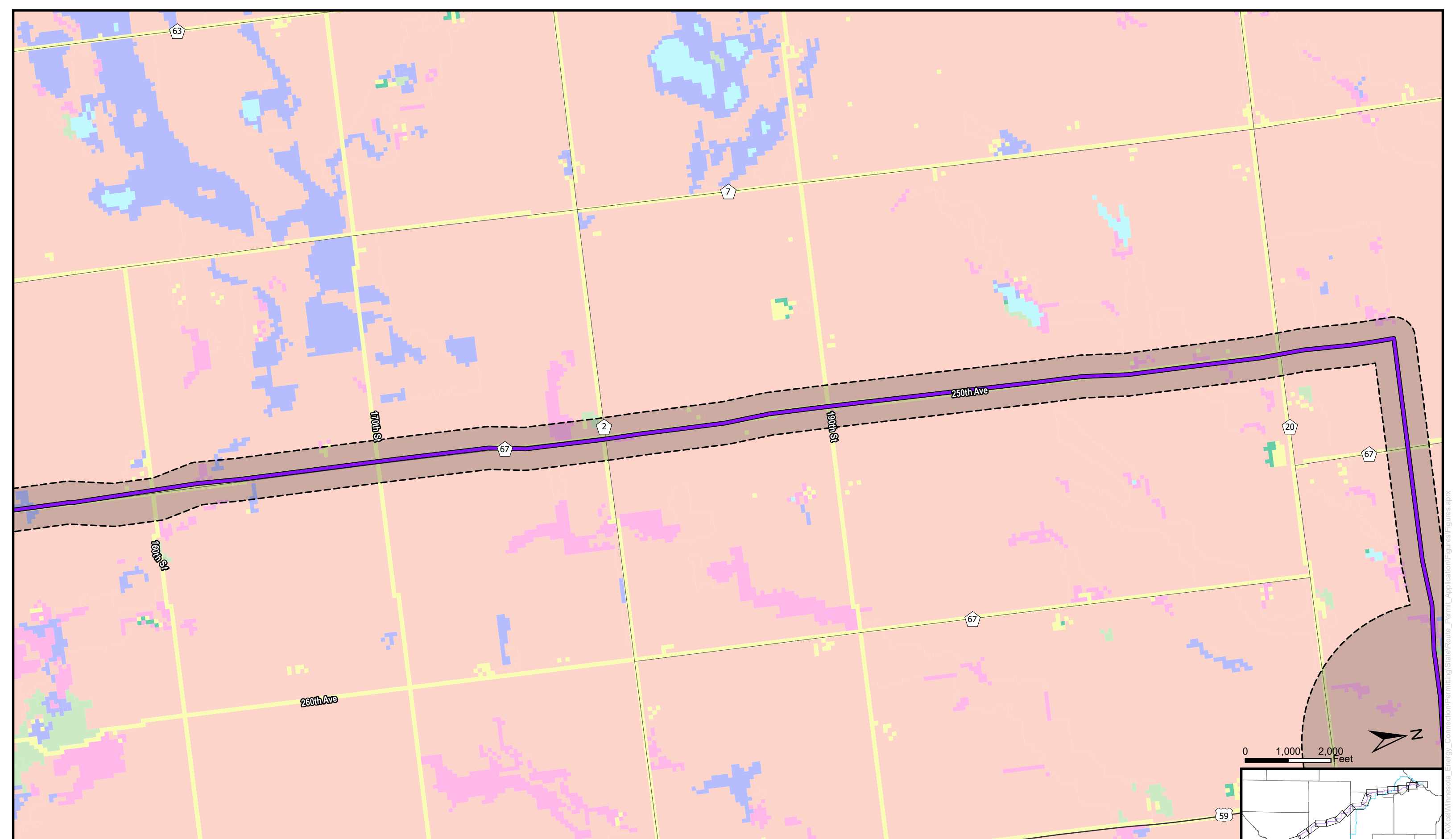
Minnesota Energy Connection
Lyon County | Page 22



DISCLAIMER: This information is believed to be correct but is subject to change and is not warranted.

Date: 10/19/2023

- | | | | |
|--------------------|-------------------------|-------------------|----------------------|
| Substation | Green Segment | Agricultural Land | Forested Lands |
| Blue Route | Proposed Route Corridor | Developed Areas | Non-forested Uplands |
| Purple Route | Municipality | Wetlands | Open Water |
| Connector Segments | County Boundary | Barren Land | |



Purple Route Land Use Maps

Minnesota Energy Connection
Lyon County | Page 23

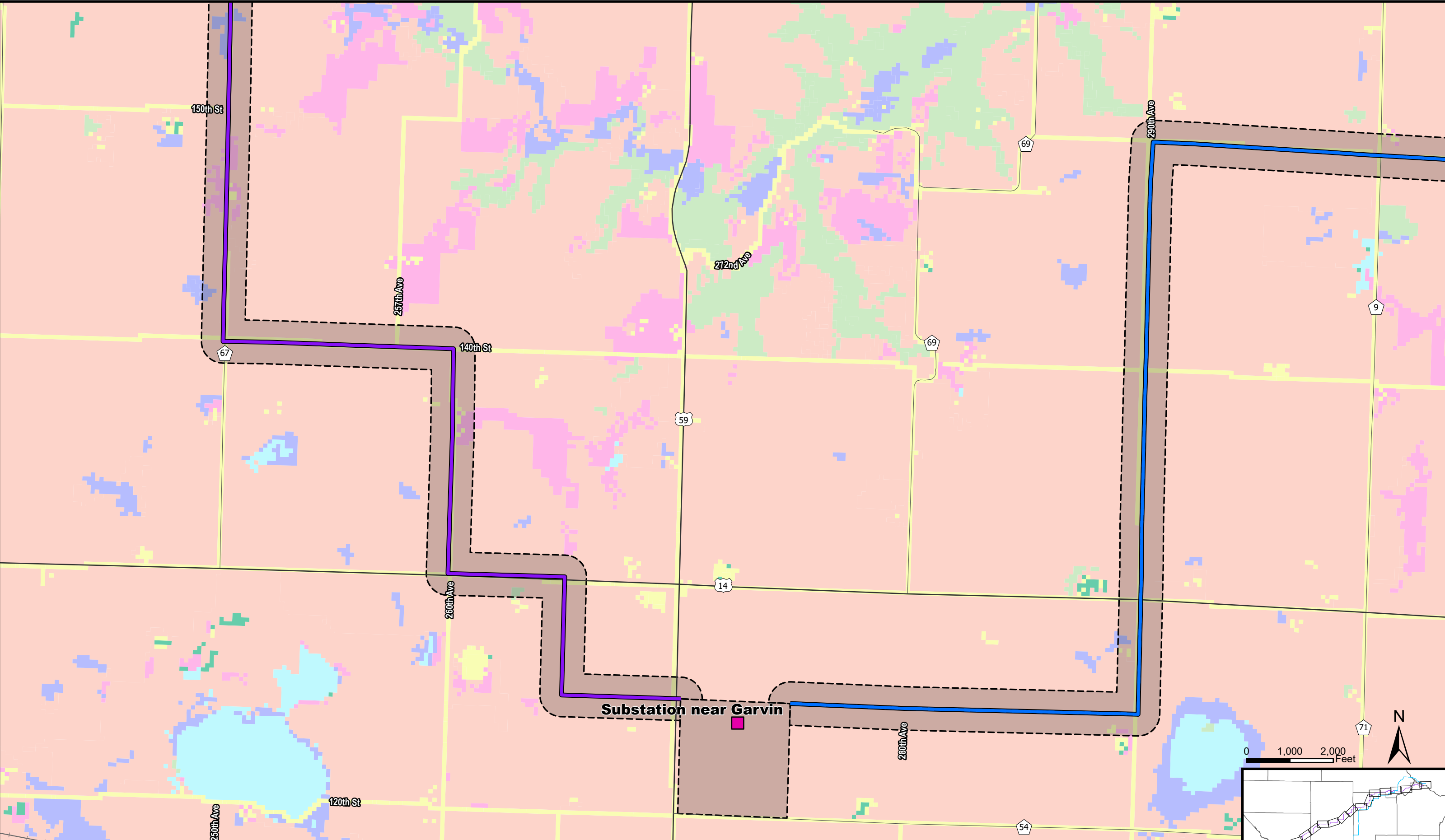


DISCLAIMER: This information is believed to be correct but is subject to change and is not warranted.

- | | | | |
|--------------------|-------------------------|-------------------|----------------------|
| Substation | Green Segment | Agricultural Land | Forested Lands |
| Blue Route | Proposed Route Corridor | Developed Areas | Non-forested Uplands |
| Purple Route | Municipality | Wetlands | Open Water |
| Connector Segments | County Boundary | | Barren Land |

Date: 10/19/2023

Document Path: z:\Clients\U_Xcel\Illinois_Energy_Connection\Permitting\State\Permits_Permit_Application\Figures\Figures.aprx



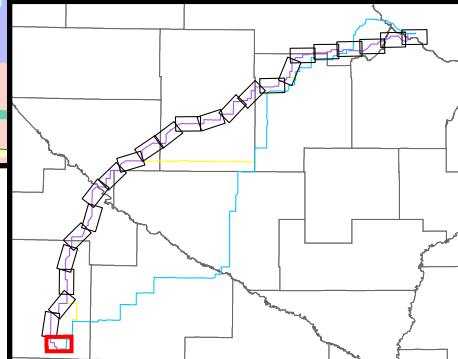
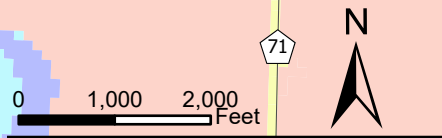
Purple Route Land Use Maps

Minnesota Energy Connection
Lyon County | Page 24



DISCLAIMER: This information is believed to be correct but is subject to change and is not warranted.

- | | | | |
|--------------------|-------------------------|-------------------|----------------------|
| Substation | Green Segment | Agricultural Land | Forested Lands |
| Blue Route | Proposed Route Corridor | Developed Areas | Non-forested Uplands |
| Purple Route | Municipality | Wetlands | Open Water |
| Connector Segments | County Boundary | | Barren Land |



Date: 10/19/2023

Document Path: Z:\Clients\U_Xcel\Illinois\Minnesota_Energy_Connection\Permitting\State\Permits_Permit_Application\Figures\Figures.aprx

Blue Route Maps