

Appendix A

Checklist

**Appendix A
Completeness Checklist**

Authority	Site Permit Application Requirements	Location in Application
Minn. Rules 7850.1900, Subp. 1		
A.	A statement of proposed ownership of the facility as of the day of filing and after commercial operation;	§ 2.1.1
B.	The precise name of any person or organization to be initially named as permittee or permittees and the name of any other person to whom the permit may be transferred if transfer of the permit is contemplated;	§ 1.3.1
C.	At least two proposed sites for the proposed large electric power generating plant and identification of the applicant's preferred site and the reasons for preferring the site;	§ 2.1.4
D.	A description of the proposed large electric power generating plant and all associated facilities, including the size and type of the facility;	§ 2.1 and § 2.2
E.	The environmental information required under subpart 3;	See Environmental Information below
F.	The names of the owners of the property for each proposed site;	Appendix D
G.	The engineering and operational design for the large electric power generating plant at each of the proposed sites;	§ 2.2
H.	A cost analysis of the large electric power generating plant at each proposed site, including the costs of constructing and operating the facility that are dependent on design and site;	§ 2.1.5 and Appendix B
I.	An engineering analysis of each of the proposed sites, including how each site could accommodate expansion of generating capacity in the future;	§ 2.2 and § 2.1.6
J.	Identification of transportation, pipeline, and electrical transmission systems that will be required to construct, maintain, and operate the facility;	§ 2.2.1.3, § 2.2.1.8, § 2.2.1.2, and § 2.2.1.7
K.	A listing and brief description of federal, state, and local permits that may be required for the project at each proposed site; and	§ 5.0

**Appendix A
Completeness Checklist**

Authority	Site Permit Application Requirements	Location in Application
L.	A copy of the Certificate of Need for the project from the Public Utilities Commission or documentation that an application for a Certificate of Need has been submitted or is not required.	§ 1.2.1
Minn. Rules 7850.1900, Subp. 3		
Environmental Information: An applicant for a site permit or a route permit shall include in the application the following environmental information for each proposed site or route to aid in the preparation of an environmental impact statement:		
A.	A description of the environmental setting for each site or route;	§ 3.1
B.	A description of the effects of construction and operation of the facility on human settlement, including, but not limited to, public health and safety, displacement, noise, aesthetics, socioeconomic impacts, cultural values, recreation, and public services;	§ 3.2
C.	A description of the effects of the facility on land- based economies, including, but not limited to, agriculture, forestry, tourism, and mining;	§ 3.3 and Appendix F
D.	A description of the effects of the facility on archaeological and historic resources;	§ 3.4 and Appendix I
E.	A description of the effects of the facility on the natural environment, including effects on air and water quality resources and flora and fauna;	§ 3.5 and Appendix J
F.	A description of the effects of the facility on rare and unique natural resources;	§ 3.6 and Appendix J
G.	Identification of human and natural environmental effects that cannot be avoided if the facility is approved at a specific site or route; and	§ 3.7
H.	A description of measures that might be implemented to mitigate the potential human and environmental impacts identified in items A to G and the estimated costs of such mitigative measures.	§ 3.1 – § 3.6 Appendices F, G, I, J

Appendix B

Project Schedule, Costs, and Future Expansion

Public Document Not-Public Data has Been Excised

Appendix B Project Schedule, Costs, and Future Expansion

SPA 1.3 Project Schedule

The anticipated schedule for the Project is provided below in Table 1.3-1.

Table 1.3-1: Anticipated Project Schedule

Activity	Estimated Activity Dates
Land Acquisition	Complete for Solar Facility, in progress for Collection Corridors
Site Permit Approval/Issuance	Q1 2024
Other Federal, State, and Local Permits Issued (see Table 4-1)	Q2 2024
Equipment Acquisition	Q4 2023 – Q3 2024
Construction Starts	Q2 2024
Commercial Testing Starts	Q3 2025
Final Commercial Operation	Q4 2025

SPA Section 2.1.5 Cost Analysis

The total installed capital costs for the Project are estimated to be approximately **[PROTECTED DATA HAS BEEN EXCISED]** including AFUDC, depending on variables including, but not limited to, construction costs, taxes, tariffs, and panel selection, along with associated electrical and communication systems, and access roads. Costs associated with the various Project components are detailed in Table 2.1-2.

Table 2.1-2: Estimated Project Costs

Project Components	Cost
Engineering, Procurement, Construction Contractor	[PROTECTED DATA HAS BEEN EXCISED]
Development Expense	
Interconnection (Includes Point of Interconnection upgrades)	
Financing (Allowance for Funds Used During Construction)	
Project Total	

Appendix C

Agency Correspondence

Appendix C
Project Notification Letters
§ 216E.03, subd. 3a
February 14, 2023



414 Nicollet Mall
Minneapolis, MN 55401

February 14, 2023

Nancy Riddle
Sherburne County Planning & Zoning Administrator
13880 Business Center Drive NW Suite 100
Elk River, MN 55330

RE: Notice of Availability for Meeting per Minn. Stat. § 216E.03, subd. 3a for a Planned Application to the Minnesota Public Utilities Commission for a Solar Facility in Sherburne County, Minnesota

Dear Ms. Riddle,

Northern States Power Company, a Minnesota Corporation, d/b/a Xcel Energy ("Xcel Energy"), is proposing to construct a new up to 250 megawatts ("MW") Sherco Solar III solar electric generation system and associated facilities ("Solar Facility") near the City of Clear Lake, in Sherburne County, Minnesota.

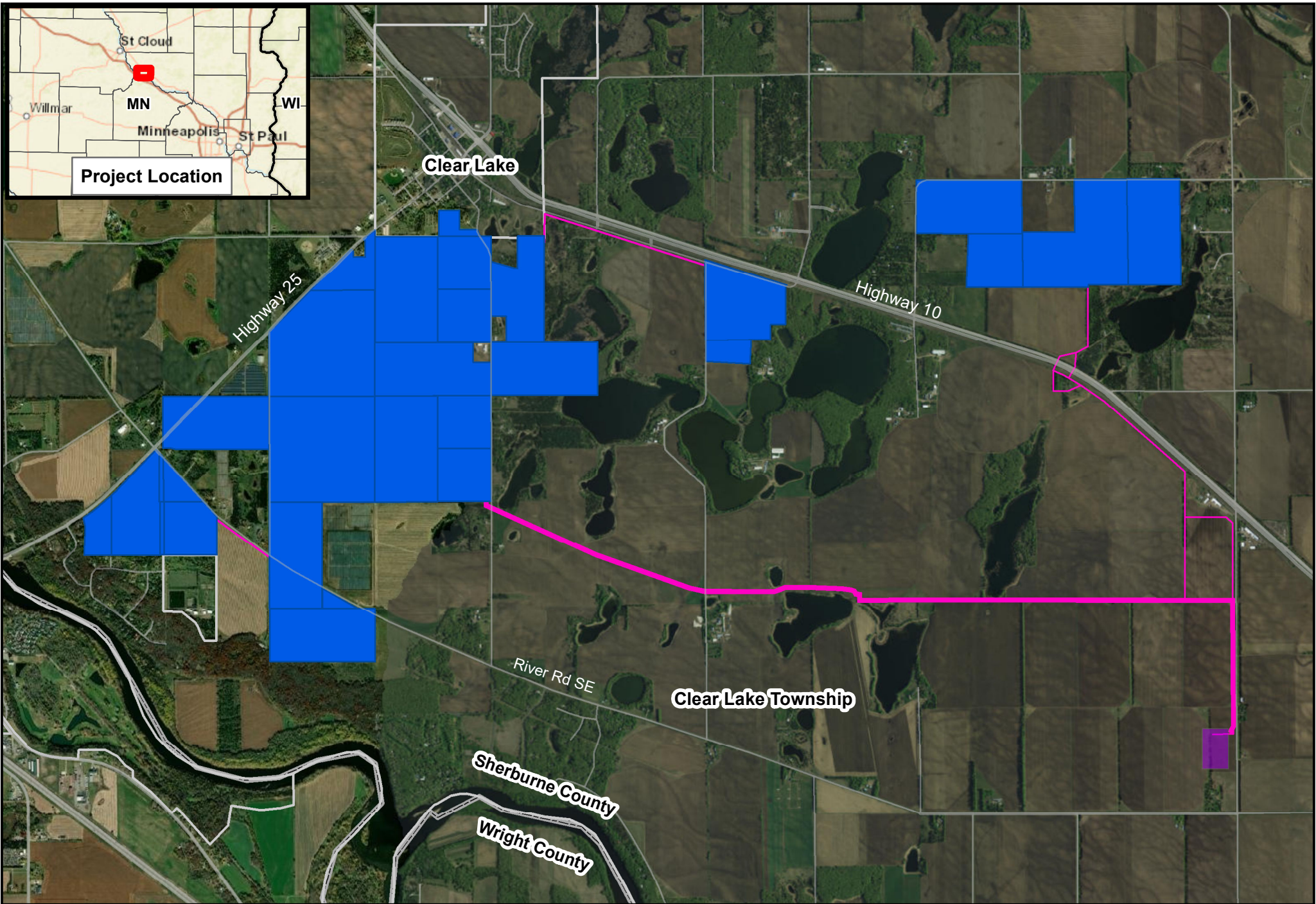
The enclosed map shows the location of the proposed Solar Facility and underground Collection corridors. The Solar Facility will cover approximately 1750 acres and is located primarily south of Highway 10 and east of CSAH 24 in Clear Lake Township. The main underground Collection corridor will be approximately 4 miles in length, extending south and east from the array to the approved Sherco Solar I collection substation location. Additional Collection lines totaling approximately 3 miles in length will connect Solar Facility sites. The energy generated from Sherco Solar III will be stepped up to 345kV at the collection substation and utilize the approved West High Voltage Transmission Line (HVTL) to connect to the Sherco Substation within the city of Becker, where it will connect to the existing regional transmission system.

The Minnesota Public Utilities Commission ("PUC") must approve the proposed project before it can be constructed. Multiple stakeholder and public input proceedings will be included in the permitting process. Xcel Energy is actively compiling information in support of the application for approval of the Solar Facility and preparing to file an application to the PUC in early 2023. If you would like to request a consultation meeting regarding the proposed Solar Facility or Transmission Line, or have any questions about the project, please contact me at 612-330-6073 or by email at Ellen.L.Heine@xcelenergy.com.

Sincerely,

A handwritten signature in blue ink that reads 'Ellen Heine'.

Ellen Heine
Sr. Siting and Permitting Agent
Xcel Energy

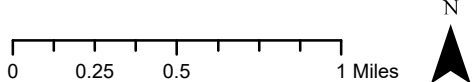


Proposed Sherco Solar III

Sherburne County, Minnesota

Date: 2/10/2023

- Sherco III Properties
- West Collector Sub
- Underground Collector lines
- Municipal Boundary
- County Boundary





414 Nicollet Mall
Minneapolis, MN 55401

February 14, 2023

Bruce Messelt
Sherburne County Administrator
13880 Business Center Drive NW Suite 100
Elk River, MN 55330

RE: Notice of Availability for Meeting per Minn. Stat. § 216E.03, subd. 3a for a Planned Application to the Minnesota Public Utilities Commission for a Solar Facility in Sherburne County, Minnesota

Dear Mr. Messelt,

Northern States Power Company, a Minnesota Corporation, d/b/a Xcel Energy ("Xcel Energy"), is proposing to construct a new up to 250 megawatts ("MW") Sherco Solar III solar electric generation system and associated facilities ("Solar Facility") near the City of Clear Lake, in Sherburne County, Minnesota.

The enclosed map shows the location of the proposed Solar Facility and underground Collection corridors. The Solar Facility will cover approximately 1750 acres and is located primarily south of Highway 10 and east of CSAH 24 in Clear Lake Township. The main underground Collection corridor will be approximately 4 miles in length, extending south and east from the array to the approved Sherco Solar I collection substation location. Additional Collection lines totaling approximately 3 miles in length will connect Solar Facility sites. The energy generated from Sherco Solar III will be stepped up to 345kV at the collection substation and utilize the approved West High Voltage Transmission Line (HVTL) to connect to the Sherco Substation within the city of Becker, where it will connect to the existing regional transmission system.

The Minnesota Public Utilities Commission ("PUC") must approve the proposed project before it can be constructed. Multiple stakeholder and public input proceedings will be included in the permitting process. Xcel Energy is actively compiling information in support of the application for approval of the Solar Facility and preparing to file an application to the PUC in early 2023. If you would like to request a consultation meeting regarding the proposed Solar Facility or Transmission Line, or have any questions about the project, please contact me at 612-330-6073 or by email at Ellen.L.Heine@xcelenergy.com.

Sincerely,

A handwritten signature in blue ink that reads 'Ellen Heine'.

Ellen Heine
Sr. Siting and Permitting Agent
Xcel Energy



414 Nicollet Mall
Minneapolis, MN 55401

February 14, 2023

Gary Gray
Sherburne County Commissioner
6020 106th Street SE
Clear Lake, MN 55319

RE: Notice of Availability for Meeting per Minn. Stat. § 216E.03, subd. 3a for a Planned Application to the Minnesota Public Utilities Commission for a Solar Facility in Sherburne County, Minnesota

Dear Mr. Messelt,

Northern States Power Company, a Minnesota Corporation, d/b/a Xcel Energy ("Xcel Energy"), is proposing to construct a new up to 250 megawatts ("MW") Sherco Solar III solar electric generation system and associated facilities ("Solar Facility") near the City of Clear Lake, in Sherburne County, Minnesota.

The enclosed map shows the location of the proposed Solar Facility and underground Collection corridors. The Solar Facility will cover approximately 1750 acres and is located primarily south of Highway 10 and east of CSAH 24 in Clear Lake Township. The main underground Collection corridor will be approximately 4 miles in length, extending south and east from the array to the approved Sherco Solar I collection substation location. Additional Collection lines totaling approximately 3 miles in length will connect Solar Facility sites. The energy generated from Sherco Solar III will be stepped up to 345kV at the collection substation and utilize the approved West High Voltage Transmission Line (HVTL) to connect to the Sherco Substation within the city of Becker, where it will connect to the existing regional transmission system.

The Minnesota Public Utilities Commission ("PUC") must approve the proposed project before it can be constructed. Multiple stakeholder and public input proceedings will be included in the permitting process. Xcel Energy is actively compiling information in support of the application for approval of the Solar Facility and preparing to file an application to the PUC in early 2023. If you would like to request a consultation meeting regarding the proposed Solar Facility or Transmission Line, or have any questions about the project, please contact me at 612-330-6073 or by email at Ellen.L.Heine@xcelenergy.com.

Sincerely,

A handwritten signature in blue ink that reads 'Ellen Heine'.

Ellen Heine
Sr. Siting and Permitting Agent
Xcel Energy



414 Nicollet Mall
Minneapolis, MN 55401

February 14, 2023

Bud Stimmler
Clear Lake Township Chairman
Box 305
Clear Lake, MN 55319

RE: Notice of Availability for Meeting per Minn. Stat. § 216E.03, subd. 3a for a Planned Application to the Minnesota Public Utilities Commission for a Solar Facility in Sherburne County, Minnesota

Dear Mr. Stimmler,

Northern States Power Company, a Minnesota Corporation, d/b/a Xcel Energy ("Xcel Energy"), is proposing to construct a new up to 250 megawatts ("MW") Sherco Solar III solar electric generation system and associated facilities ("Solar Facility") near the City of Clear Lake, in Sherburne County, Minnesota.

The enclosed map shows the location of the proposed Solar Facility and underground Collection corridors. The Solar Facility will cover approximately 1750 acres and is located primarily south of Highway 10 and east of CSAH 24 in Clear Lake Township. The main underground Collection corridor will be approximately 4 miles in length, extending south and east from the array to the approved Sherco Solar I collection substation location. Additional Collection lines totaling approximately 3 miles in length will connect Solar Facility sites. The energy generated from Sherco Solar III will be stepped up to 345kV at the collection substation and utilize the approved West High Voltage Transmission Line (HVTL) to connect to the Sherco Substation within the city of Becker, where it will connect to the existing regional transmission system.

The Minnesota Public Utilities Commission ("PUC") must approve the proposed project before it can be constructed. Multiple stakeholder and public input proceedings will be included in the permitting process. Xcel Energy is actively compiling information in support of the application for approval of the Solar Facility and preparing to file an application to the PUC in early 2023. If you would like to request a consultation meeting regarding the proposed Solar Facility or Transmission Line, or have any questions about the project, please contact me at 612-330-6073 or by email at Ellen.L.Heine@xcelenergy.com.

Sincerely,

A handwritten signature in blue ink that reads 'Ellen Heine'.

Ellen Heine
Sr. Siting and Permitting Agent
Xcel Energy



414 Nicollet Mall
Minneapolis, MN 55401

February 14, 2023

Tim Goenner
City of Clear Lake Mayor
PO Box 298
Clear Lake, MN 55319

RE: Notice of Availability for Meeting per Minn. Stat. § 216E.03, subd. 3a for a Planned Application to the Minnesota Public Utilities Commission for a Solar Facility in Sherburne County, Minnesota

Dear Mr. Goenner,

Northern States Power Company, a Minnesota Corporation, d/b/a Xcel Energy ("Xcel Energy"), is proposing to construct a new up to 250 megawatts ("MW") Sherco Solar III solar electric generation system and associated facilities ("Solar Facility") near the City of Clear Lake, in Sherburne County, Minnesota.

The enclosed map shows the location of the proposed Solar Facility and underground Collection corridors. The Solar Facility will cover approximately 1750 acres and is located primarily south of Highway 10 and east of CSAH 24 in Clear Lake Township. The main underground Collection corridor will be approximately 4 miles in length, extending south and east from the array to the approved Sherco Solar I collection substation location. Additional Collection lines totaling approximately 3 miles in length will connect Solar Facility sites. The energy generated from Sherco Solar III will be stepped up to 345kV at the collection substation and utilize the approved West High Voltage Transmission Line (HVTL) to connect to the Sherco Substation within the city of Becker, where it will connect to the existing regional transmission system.

The Minnesota Public Utilities Commission ("PUC") must approve the proposed project before it can be constructed. Multiple stakeholder and public input proceedings will be included in the permitting process. Xcel Energy is actively compiling information in support of the application for approval of the Solar Facility and preparing to file an application to the PUC in early 2023. If you would like to request a consultation meeting regarding the proposed Solar Facility or Transmission Line, or have any questions about the project, please contact me at 612-330-6073 or by email at Ellen.L.Heine@xcelenergy.com.

Sincerely,

A handwritten signature in blue ink that reads 'Ellen Heine'.

Ellen Heine
Sr. Siting and Permitting Agent
Xcel Energy



414 Nicollet Mall
Minneapolis, MN 55401

February 14, 2023

Jacob Sanders
Becker Community Development Director
12060 Sherburne Ave
Becker, MN 55308

RE: Notice of Availability for Meeting per Minn. Stat. § 216E.03, subd. 3a for a Planned Application to the Minnesota Public Utilities Commission for a Solar Facility in Sherburne County, Minnesota

Dear Mr. Sanders,

Northern States Power Company, a Minnesota Corporation, d/b/a Xcel Energy ("Xcel Energy"), is proposing to construct a new up to 250 megawatts ("MW") Sherco Solar III solar electric generation system and associated facilities ("Solar Facility") near the City of Clear Lake, in Sherburne County, Minnesota.

The enclosed map shows the location of the proposed Solar Facility and underground Collection corridors. The Solar Facility will cover approximately 1750 acres and is located primarily south of Highway 10 and east of CSAH 24 in Clear Lake Township. The main underground Collection corridor will be approximately 4 miles in length, extending south and east from the array to the approved Sherco Solar I collection substation location. Additional Collection lines totaling approximately 3 miles in length will connect Solar Facility sites. The energy generated from Sherco Solar III will be stepped up to 345kV at the collection substation and utilize the approved West High Voltage Transmission Line (HVTL) to connect to the Sherco Substation within the city of Becker, where it will connect to the existing regional transmission system.

The Minnesota Public Utilities Commission ("PUC") must approve the proposed project before it can be constructed. Multiple stakeholder and public input proceedings will be included in the permitting process. Xcel Energy is actively compiling information in support of the application for approval of the Solar Facility and preparing to file an application to the PUC in early 2023. If you would like to request a consultation meeting regarding the proposed Solar Facility or Transmission Line, or have any questions about the project, please contact me at 612-330-6073 or by email at Ellen.L.Heine@xcelenergy.com.

Sincerely,

A handwritten signature in blue ink that reads 'Ellen Heine'.

Ellen Heine
Sr. Siting and Permitting Agent
Xcel Energy



414 Nicollet Mall
Minneapolis, MN 55401

February 14, 2023

Greg Lerud
Becker City Administrator
12060 Sherburne Ave
Becker, MN 55308

RE: Notice of Availability for Meeting per Minn. Stat. § 216E.03, subd. 3a for a Planned Application to the Minnesota Public Utilities Commission for a Solar Facility in Sherburne County, Minnesota

Dear Mr. Lerud,

Northern States Power Company, a Minnesota Corporation, d/b/a Xcel Energy ("Xcel Energy"), is proposing to construct a new up to 250 megawatts ("MW") Sherco Solar III solar electric generation system and associated facilities ("Solar Facility") near the City of Clear Lake, in Sherburne County, Minnesota.

The enclosed map shows the location of the proposed Solar Facility and underground Collection corridors. The Solar Facility will cover approximately 1750 acres and is located primarily south of Highway 10 and east of CSAH 24 in Clear Lake Township. The main underground Collection corridor will be approximately 4 miles in length, extending south and east from the array to the approved Sherco Solar I collection substation location. Additional Collection lines totaling approximately 3 miles in length will connect Solar Facility sites. The energy generated from Sherco Solar III will be stepped up to 345kV at the collection substation and utilize the approved West High Voltage Transmission Line (HVTL) to connect to the Sherco Substation within the city of Becker, where it will connect to the existing regional transmission system.

The Minnesota Public Utilities Commission ("PUC") must approve the proposed project before it can be constructed. Multiple stakeholder and public input proceedings will be included in the permitting process. Xcel Energy is actively compiling information in support of the application for approval of the Solar Facility and preparing to file an application to the PUC in early 2023. If you would like to request a consultation meeting regarding the proposed Solar Facility or Transmission Line, or have any questions about the project, please contact me at 612-330-6073 or by email at Ellen.L.Heine@xcelenergy.com.

Sincerely,

A handwritten signature in blue ink that reads 'Ellen Heine'.

Ellen Heine
Sr. Siting and Permitting Agent
Xcel Energy

Appendix C
Representative Project Introduction Letters
Federal, State, and Local Agencies
May 2, 2023

Organization	Category	Name	Title	Street Address	City	State	Zip
U.S. Army Corps of Engineers	Federal	Christopher Erikson	Assistant Deputy for Programs and PM	180 5th St. East, Ste 700	St. Paul	MN	55101
Federal Aviation Administration	Federal	Andy Peek	Manager	6020 28th Ave S - Ste 102	Minneapolis	MN	55450
Sherburne County SWCD	Local	Francine Larson	District Manager	425 Jackson Ave NW	Elk River	MN	55330
Minnesota Board of Water and Soil Resources	State	Dan Shaw	Senior Ecologist	520 Lafayette Rd N	St. Paul	MN	55155
Minnesota Department of Agriculture	State	Steve Roos	Environmental Planner, Ag Marketing & Development	625 Robert Street	St. Paul	MN	55155
Minnesota Department of Health	State	Kristin Raab	Health Impact Assessment and Climate Change Program Director	625 Robert Street N	St. Paul	MN	55101
Minnesota Department of Transportation	State	Ryan Gaug	Interim Office Director	395 John Ireland Blvd	St. Paul	MN	55155
Minnesota Department of Transportation	State	Stacy Kotch	Utility Transmission Route Coordinator	395 John Ireland Blvd	St. Paul	MN	55155
Minnesota Pollution Control Agency	State	Todd Smith	Principal Engineer	520 Lafayette Rd N	St. Paul	MN	55155
Minnesota State Historic Preservation Office	State	Sarah Beimers	Environmental Review Program Manager	50 Sherburne Ave - #203	St. Paul	MN	55101



414 Nicollet Mall
Minneapolis, MN 55401

May 2, 2023

<Address Block>

RE: Requesting Comments on the Proposed Sherco Solar 3 Project in Sherburne County, Minnesota

Dear <Name>,

Northern States Power Company (Xcel Energy) is gathering information and requesting comments for a proposed utility-scale solar-energy project in Sherburne County, Minnesota, the Sherco Solar 3 Project (Project). Xcel Energy will be submitting an application to the Minnesota Public Utilities Commission ("PUC") for the 250 MW solar-energy generation facility. Upon receipt of applicable permits and approvals, Xcel Energy anticipates construction beginning in 2024 and commencement of commercial operation by the end of 2025. We welcome any comments you may have at this time and throughout the permit application process.

The Project encompasses approximately 1,700 acres of agricultural lands located in Clear Lake Township, west of the existing Sherco Coal Generation Plant and the permitted Sherco Solar 1 which is beginning construction this spring. Land cover within the Project area is predominantly farmland with row crops, most of which utilize center-pivot-irrigation.

Xcel Energy continues to collect information to inform Project design. The racking layout, access roads, and electrical connections have not been finalized. In general, the Project's permanent facilities will include:

- Solar modules, inverters, and racking
- Fencing
- Access roads
- On-site below-ground and above-ground electrical collection lines
- Below-ground electrical lines to collection substation

To facilitate your review, we have enclosed a map of the Project's location and associated collection system.

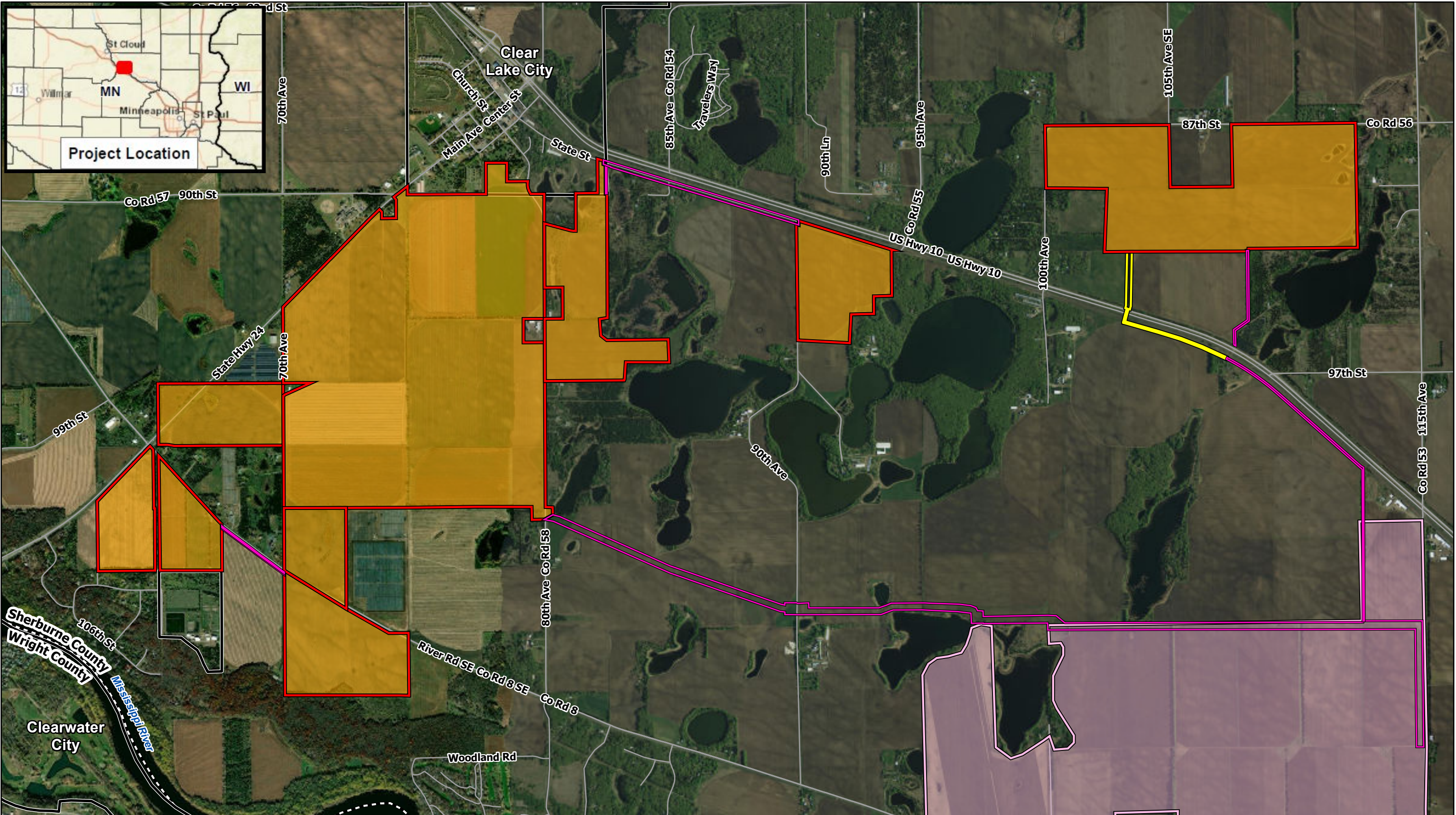
We are interested in your input regarding the proposed Project. If you require further information or have questions regarding this matter, please contact me at 612-330-6073 or at Ellen.L.Heine@xcelenergy.com.

Sincerely,

A handwritten signature in blue ink that reads 'Ellen Heine'.

Ellen Heine

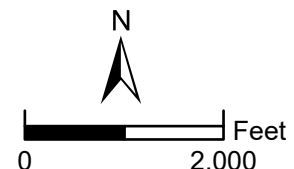
Principal Siting and Permitting Agent
Xcel Energy



Data Source(s): Westwood (2023); ESRI WMS Imagery Basemap (Accessed 2023); U.S. Census Bureau (2021); USGS NHD (2022); USFWS NWI (2022); MN PWI (2023); FEMA (2022).

- Legend**
- Sherco 3 Project Area
 - Sherco 3 Collection Corridor
 - Sherco 3 Collection Corridor Alternate
 - Sherco 1 (West Block) Project Area
 - Road
 - Municipal Boundary
 - County Boundary

Westwood
 Toll Free (888) 937-5150 westwoodps.com
 Westwood Professional Services, Inc.



Sherco 3 Solar Project
 Sherburne County, Minnesota

Map Document: N:\0036476_00_GIS_ArcPro\0036476_040_SPA\Figures\0036476_040_SPA\Figures_230425.aprx 4/27/2023 6:14 AM EMBolsen



414 Nicollet Mall
Minneapolis, MN 55401

May 2, 2023

Shauna Marquardt
3815 American Blvd. East
Bloomington, MN 55425

RE: Requesting Comments on the Proposed Sherco Solar 3 Project in Sherburne County, Minnesota

Dear Shauna Marquardt,

Northern States Power Company (Xcel Energy) is gathering information and requesting comments for a proposed utility-scale solar-energy project in Sherburne County, Minnesota, the Sherco Solar 3 Project (Project). Xcel Energy will be submitting an application to the Minnesota Public Utilities Commission (“PUC”) for the 250 MW solar-energy generation facility. Upon receipt of applicable permits and approvals, Xcel Energy anticipates construction beginning in 2024 and commencement of commercial operation by the end of 2025. We welcome any comments you may have at this time and throughout the permit application process.

The Project encompasses approximately 1,700 acres of agricultural lands located in Clear Lake Township, west of the existing Sherco Coal Generation Plant and the permitted Sherco Solar 1 which is beginning construction this spring. Land cover within the Project area is predominantly farmland with row crops, most of which utilize center-pivot-irrigation.

Xcel Energy continues to collect information to inform Project design. The racking layout, access roads, and electrical connections have not been finalized. In general, the Project’s permanent facilities will include:

- Solar modules, inverters, and racking
- Fencing
- Access roads
- On-site below-ground and above-ground electrical collection lines
- Below-ground electrical lines to collection substation

To facilitate your review, we have enclosed a map of the Project’s location and associated collection system. Portions of the Project area, the orange shaded areas in the enclosed map, were previously included in the Sherco Solar 1 Project and reviewed by your agency in 2021. Since that time those units were removed from that earlier project and have now been incorporated into the Sherco Solar 3 Project, along with the remaining units which are shaded in green.

The current proposed boundary was uploaded into the U.S. Fish & Wildlife (USFWS) Information for Planning and Consultation (IPaC) online planning tool on May 1, 2023. A copy of the results is enclosed and is summarized below:

There are no critical habitats for federally listed species mapped within the Project area. There is a total

of four threatened, endangered or candidate species on the species list: monarch butterfly (candidate), northern long eared bat (NLEB; endangered), tricolored bat (proposed endangered) and whooping crane (experimental population). A further determination of likelihood of impacts to NLEB indicates that the Project may affect, but is not likely to adversely affect the species. The potential to impact the remaining species will be addressed in the site permit application. Xcel Energy has also initiated a natural heritage review with the MN DNR to address any state-listed species.

In April 2023, an active bald eagle nest was discovered within the Project area during a raptor nest survey conducted by Westwood Professional Services. Xcel Energy has initiated coordination with USFWS Migratory Birds Office, Minnesota DNR Nongame Wildlife Program, and the landowner of the property the nest is located on to discuss project options for the nest, including nest removal or appropriate project setbacks from the nest.

We are interested in your feedback regarding the proposed Project. If you require further information or have questions regarding this matter, please contact me at 612-330-6073 or at Ellen.L.Heine@xcelenergy.com.

Sincerely,



Ellen Heine
Principal Siting and Permitting Agent
Xcel Energy

Enclosures:

- Project location map
- IPaC Report
- IPaC Determination key report

CC:

- Margaret Rheude - USFWS Wildlife Biologist
- Deanne Endrizzi - USFWS Wildlife Biologist



414 Nicollet Mall
Minneapolis, MN 55401

May 2, 2023

Dawn Marsh
US Fish and Wildlife Service
4101 American Blvd E
Bloomington, MN 55425

RE: Requesting Comments on the Proposed Sherco Solar 3 Project in Sherburne County, Minnesota

Dear Margaret Rheude,

Northern States Power Company (Xcel Energy) is gathering information and requesting comments for a proposed utility-scale solar-energy project in Sherburne County, Minnesota, the Sherco Solar 3 Project (Project). Xcel Energy will be submitting an application to the Minnesota Public Utilities Commission ("PUC") for the 250 MW solar-energy generation facility. Upon receipt of applicable permits and approvals, Xcel Energy anticipates construction beginning in 2024 and commencement of commercial operation by the end of 2025. We welcome any comments you may have at this time and throughout the permit application process.

The Project encompasses approximately 1,700 acres of agricultural lands located in Clear Lake Township, west of the existing Sherco Coal Generation Plant and the permitted Sherco Solar 1 which is beginning construction this spring. Land cover within the Project area is predominantly farmland with row crops, most of which utilize center-pivot-irrigation.

Xcel Energy continues to collect information to inform Project design. The racking layout, access roads, and electrical connections have not been finalized. In general, the Project's permanent facilities will include:

- Solar modules, inverters, and racking
- Fencing
- Access roads
- On-site below-ground and above-ground electrical collection lines
- Below-ground electrical lines to collection substation

To facilitate your review, we have enclosed a map of the Project's location and associated collection system. Portions of the Project area, the orange shaded areas in the enclosed map, were previously included in the Sherco Solar 1 Project and reviewed by your agency in 2021. Since that time those units were removed from that earlier project and have now been incorporated into the Sherco Solar 3 Project, along with the remaining units which are shaded in green.

The current proposed boundary was uploaded into the U.S. Fish & Wildlife (USFWS) Information for Planning and Consultation (IPaC) online planning tool on May 1, 2023. A copy of the results is enclosed and is summarized below:

There are no critical habitats for federally listed species mapped within the Project area. There is a total of four threatened, endangered or candidate species on the species list: monarch butterfly (candidate), northern long eared bat (NLEB; endangered), tricolored bat (proposed endangered) and whooping crane (experimental population). A further determination of likelihood of impacts to NLEB indicates that the Project may affect, but is not likely to adversely affect the species. The potential to impact the remaining species will be addressed in the site permit application. Xcel Energy has also initiated a natural heritage review with the MN DNR to address any state-listed species.

In April 2023, an active bald eagle nest was discovered within the Project area during a raptor nest survey conducted by Westwood Professional Services. Xcel Energy has initiated coordination with USFWS Migratory Birds Office, Minnesota DNR Nongame Wildlife Program, and the landowner of the property the nest is located on to discuss project options for the nest, including nest removal or appropriate project setbacks from the nest.

We are interested in your feedback regarding the proposed Project. If you require further information or have questions regarding this matter, please contact me at 612-330-6073 or at Ellen.L.Heine@xcelenergy.com.

Sincerely,



Ellen Heine
Principal Siting and Permitting Agent
Xcel Energy

Enclosures:

- Project location map
- IPaC Report
- IPaC Determination key report

CC:

- Margaret Rheude - USFWS Wildlife Biologist
- Deanne Endrizzi - USFWS Wildlife Biologist



414 Nicollet Mall
Minneapolis, MN 55401

May 2, 2023

Cynthia Warzecha
Minnesota Department of Natural Resources
500 Lafayette Road
St. Paul, MN 55164

RE: Requesting Comments on the Proposed Sherco Solar 3 Project in Sherburne County, Minnesota

Dear Ms. Warzecha,

Northern States Power Company (Xcel Energy) is gathering information and requesting comments for a proposed utility-scale solar-energy project in Sherburne County, Minnesota, the Sherco Solar 3 Project (Project). Xcel Energy will be submitting an application to the Minnesota Public Utilities Commission ("PUC") for the 250 MW solar-energy generation facility. Upon receipt of applicable permits and approvals, Xcel Energy anticipates construction beginning in 2024 and commencement of commercial operation by the end of 2025. We welcome any comments you may have at this time and throughout the permit application process.

The Project encompasses approximately 1,700 acres of agricultural lands located in Clear Lake Township, west of the existing Sherco Coal Generation Plant and the permitted Sherco Solar 1 which is beginning construction this spring. Land cover within the Project area is predominantly farmland with row crops, most of which utilize center-pivot-irrigation.

Xcel Energy continues to collect information to inform Project design. The racking layout, access roads, and electrical connections have not been finalized. In general, the Project's permanent facilities will include:

- Solar modules, inverters, and racking
- Fencing
- Access roads
- On-site below-ground and above-ground electrical collection lines
- Below-ground electrical lines to collection substation

To facilitate your review, we have enclosed a map of the Project's location and associated collection system. Portions of the Project area, the orange shaded areas in the enclosed map, were previously included in the Sherco Solar 1 Project and reviewed by your agency in 2021. Since that time those units were removed from that earlier project and have now been incorporated into the Sherco Solar 3 Project, along with the remaining units which are shaded in green.

Xcel Energy has incorporated Minnesota Department of Natural Resources (MnDNR) mapping layers in our project development map, including, but not limited to: NHIS data, MBS sites, native plant communities, state lands, and calcareous fens. The current proposed Project boundary was also uploaded into the MnDNR Minnesota Conservation Explorer on May 1, 2023, for a formal natural

heritage review. The results of the automated review indicate that further review is needed. A copy of that automated report is enclosed. The Project team is in the process of completing desktop and field reviews of the site which will support further NHI review coordination.

We expect Project perimeter fencing to be similar to what will be installed at Sherco Solar 1 & 2: Eight-foot-tall agricultural fencing on either wood or steel posts. As with that project, we will plan to install gates at strategic locations around the perimeter of each unit to allow deer to be let out, should they find their way into the fenced areas.

In April 2023, an active bald eagle nest was discovered within the Project area during a raptor nest survey conducted by Westwood Professional Services. Xcel Energy has initiated coordination with USFWS Migratory Birds Office, Minnesota DNR Nongame Wildlife Program, and the landowner of the property the nest is located on to discuss project options for the nest, including nest removal or appropriate project setbacks from the nest.

A Vegetation Management Plan (VMP) is currently being developed for this Project. A draft copy of the VMP will be provided to DNR staff who are part of the Vegetation Management Plan Working Group (VMPWG) when it is available. The VMP for the Project draws heavily from information and experience gained through the planning process for Sherco Solar 1 and 2 and will continue to be adapted to incorporate additional insight gained as that plan is implemented.

We are interested in your feedback regarding the proposed Project. If you require further information or have questions regarding this matter, please contact me at 612-330-6073 or at Ellen.L.Heine@xcelenergy.com.

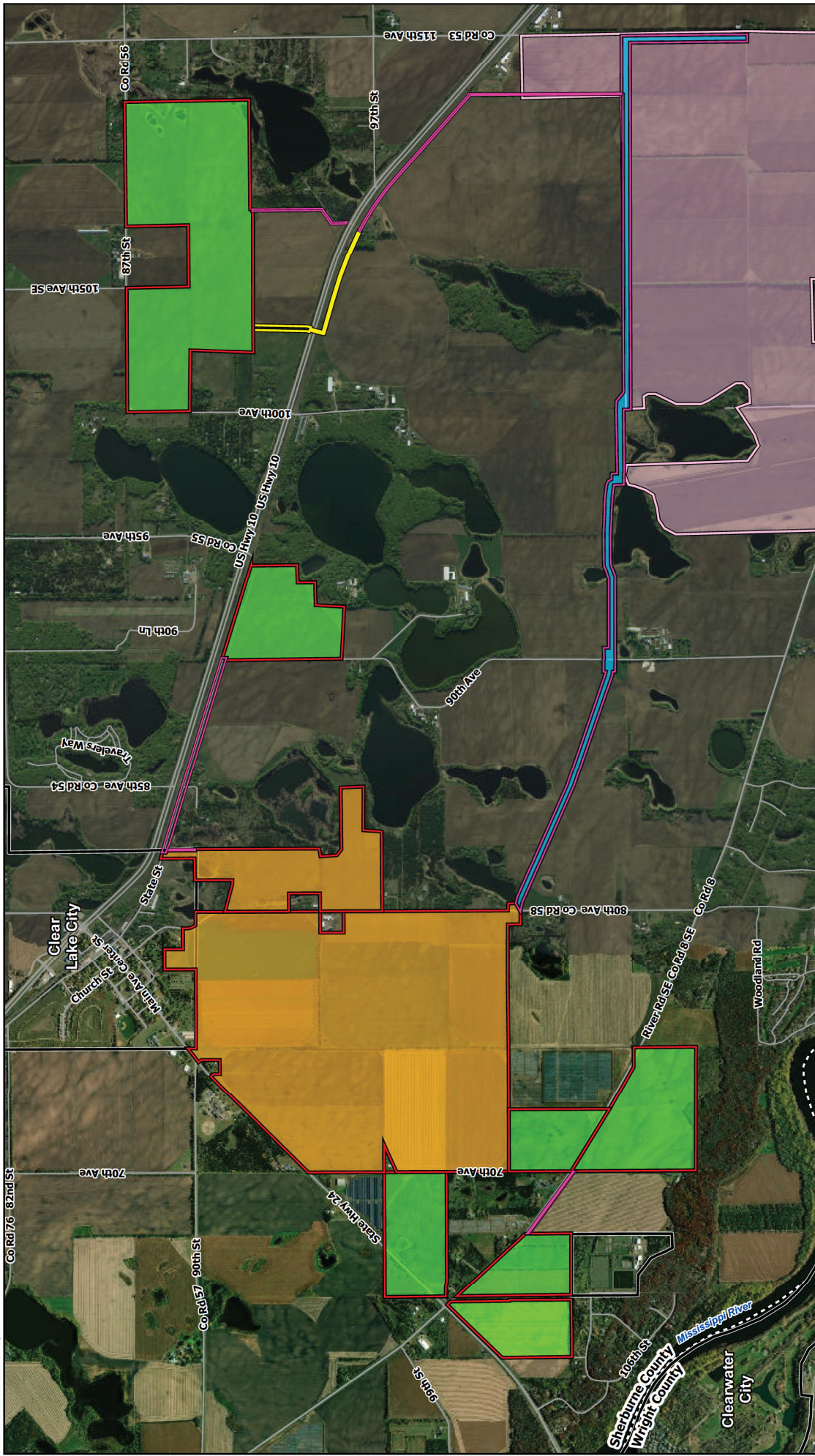
Sincerely,



Ellen Heine
Principal Siting and Permitting Agent
Xcel Energy

Enclosures:

Project map
MCE Project Report



Data Source(s): Westwood (2023), ESRI, WMS Imagery, Bingmaps (Accessed 2023), U.S. Census (2022), MN FWM (2023), FEMA (2022)

Westwood
 Tel: (888) 937-1199 westwoodps.com
 Westwood Professional Services, Inc.

Legend

- Sherco 3 Project Area
- Sherco 3 Project Area Included in Previous Notification
- Sherco 3 Project Area Not Included in Previous Notification
- Sherco 3 Collection Corridor
- Sherco 3 Collection Corridor Included in Previous Notification
- Sherco 3 Collection Corridor Alternate
- Sherco 1 (West Block) Project Area
- Road
- Municipal Boundary
- County Boundary



Sherco 3 Solar Project
 Sherburne County, Minnesota



414 Nicollet Mall
Minneapolis, MN 55401

May 2, 2023

Kate Fairman
Minnesota Department of Natural Resources
500 Lafayette Road
St. Paul, MN 55155

RE: Requesting Comments on the Proposed Sherco Solar 3 Project in Sherburne County, Minnesota

Dear Ms. Fairman,

Northern States Power Company (Xcel Energy) is gathering information and requesting comments for a proposed utility-scale solar-energy project in Sherburne County, Minnesota, the Sherco Solar 3 Project (Project). Xcel Energy will be submitting an application to the Minnesota Public Utilities Commission ("PUC") for the 250 MW solar-energy generation facility. Upon receipt of applicable permits and approvals, Xcel Energy anticipates construction beginning in 2024 and commencement of commercial operation by the end of 2025. We welcome any comments you may have at this time and throughout the permit application process.

The Project encompasses approximately 1,700 acres of agricultural lands located in Clear Lake Township, west of the existing Sherco Coal Generation Plant and the permitted Sherco Solar 1 which is beginning construction this spring. Land cover within the Project area is predominantly farmland with row crops, most of which utilize center-pivot-irrigation.

Xcel Energy continues to collect information to inform Project design. The racking layout, access roads, and electrical connections have not been finalized. In general, the Project's permanent facilities will include:

- Solar modules, inverters, and racking
- Fencing
- Access roads
- On-site below-ground and above-ground electrical collection lines
- Below-ground electrical lines to collection substation

To facilitate your review, we have enclosed a map of the Project's location and associated collection system. Portions of the Project area, the orange shaded areas in the enclosed map, were previously included in the Sherco Solar 1 Project and reviewed by your agency in 2021. Since that time those units were removed from that earlier project and have now been incorporated into the Sherco Solar 3 Project, along with the remaining units which are shaded in green.

Xcel Energy has incorporated Minnesota Department of Natural Resources (MnDNR) mapping layers in our project development map, including, but not limited to: NHIS data, MBS sites, native plant communities, state lands, and calcareous fens. The current proposed Project boundary was also uploaded into the MnDNR Minnesota Conservation Explorer on May 1, 2023, for a formal natural

heritage review. The results of the automated review indicate that further review is needed. A copy of that automated report is enclosed. The Project team is in the process of completing desktop and field reviews of the site which will support further NHI review coordination.

We expect Project perimeter fencing to be similar to what will be installed at Sherco Solar 1 & 2: Eight-foot-tall agricultural fencing on either wood or steel posts. As with that project, we will plan to install gates at strategic locations around the perimeter of each unit to allow deer to be let out, should they find their way into the fenced areas.

In April 2023, an active bald eagle nest was discovered within the Project area during a raptor nest survey conducted by Westwood Professional Services. Xcel Energy has initiated coordination with USFWS Migratory Birds Office, Minnesota DNR Nongame Wildlife Program, and the landowner of the property the nest is located on to discuss project options for the nest, including nest removal or appropriate project setbacks from the nest.

A Vegetation Management Plan (VMP) is currently being developed for this Project. A draft copy of the VMP will be provided to DNR staff who are part of the Vegetation Management Plan Working Group (VMPWG) when it is available. The VMP for the Project draws heavily from information and experience gained through the planning process for Sherco Solar 1 and 2 and will continue to be adapted to incorporate additional insight gained as that plan is implemented.

We are interested in your feedback regarding the proposed Project. If you require further information or have questions regarding this matter, please contact me at 612-330-6073 or at Ellen.L.Heine@xcelenergy.com.

Sincerely,



Ellen Heine
Principal Siting and Permitting Agent
Xcel Energy

Enclosures:

Project map
MCE Project Report



414 Nicollet Mall
Minneapolis, MN 55401

May 16, 2023

Sarah Beimers
Environmental Review Program Manager
Minnesota State Historic Preservation Office
50 Sherburne Ave - #203
St. Paul, MN 55101

RE: Requesting Comments on Proposed Sherco Solar 3 Project in Sherburne County, Minnesota

Dear Ms. Beimers,

I am writing to let you know about an upcoming solar project and to provide you with an opportunity to request more information or to meet to discuss the project. Northern States Power Company (Xcel Energy) is gathering information and requesting comments for a proposed utility-scale solar-energy project in Sherburne County, Minnesota, the Sherco Solar 3 Project (Project). Xcel Energy will be submitting an application to the Minnesota Public Utilities Commission ("PUC") for a 250 MW solar-energy generation facility. Upon receipt of applicable permits and permissions, Xcel Energy anticipates construction beginning in 2024 and commencement of commercial operation by the end of 2025.

The Project encompasses agricultural lands located in Clear Lake Township, west of the existing Sherco Coal Generation Plant and the permitted Sherco Solar 1 which is beginning construction this spring. Land cover within the Project area is predominantly farmland with row crops, most of which utilize center-pivot-irrigation.

To facilitate your review, we have enclosed a map of the Project's location and associated collection system. Xcel Energy continues to collect information to inform Project design. The racking layout, access roads, and electrical connections have not been finalized. In general, the Project's permanent facilities will include:

- Solar modules, inverters, and racking;
- Fencing;
- Access roads;
- On-site below-ground and above-ground electrical collection lines; and
- Off-site below-ground electrical collection lines

Xcel Energy's consultant, Westwood, has completed a cultural resources literature review for the Project. A memo describing the results of that review is enclosed with this letter. A previous Phase 1 Cultural Resource Survey has also been completed by Tetra Tech for a portion of the Project area when those units were included in a previous Sherco Solar project being developed by National Grid Renewables and Xcel Energy. A copy of the Tetra Tech report is also enclosed. The previously surveyed area is identified as the Northwestern Solar Development Area in the Tetra Tech report and Units 1 and 2 in the enclosed Sherco Solar 3 Project map.

We are interested in your input regarding the Project site or associated study area. We welcome any comments you may have at this time and throughout the permit application process.

If you require further information or have questions regarding this matter, please contact me at 612-330-6073 or at Ellen.L.Heine@xcelenergy.com.

Sincerely,

A handwritten signature in blue ink that reads "Ellen Heine". The signature is written in a cursive, flowing style.

Ellen Heine
Principal Siting and Permitting Agent
Xcel Energy

Appendix C
Representative Project Introduction Letters
Tribal Representatives
May 4, 2023

Tribal Name	Last Name	First Name	Title	Street Address	City	State	Zip Code
Keweenaw Bay Indian Community	Connor	Alden	THPO	16429 Beartown Rd.	Baraga	MI	49908
Keweenaw Bay Indian Community	Klopstein	Kim	President	16429 Beartown Rd.	Baraga	MI	49908
Lac du Flambeau Band of Lake Superior Chippewa Indians	Shively	Alina	THPO	P.O. Box 249	Watersmeet	MI	49969
Lac du Flambeau Band of Lake Superior Chippewa Indians	Williams	James	Chairman	E23968 Pow Wow Trail	Watersmeet	MI	49969
Fond du Lac Band of the Minnesota Chippewa Tribe	Dupuis	Kevin	Chairperson	1720 Big Lake Rd	Cloquet	MN	55720
Fond du Lac Band of the Minnesota Chippewa Tribe	Hoppe	Jill	THPO	1720 Big Lake Rd	Cloquet	MN	55720
Grand Portage Band of the Minnesota Chippewa Tribe	Drost	Beth	Chairwoman	PO Box 428	Grand Portage	MN	55605
Grand Portage Band of the Minnesota Chippewa Tribe	Gagnon	Maryann	THPO	PO Box 428	Grand Portage	MN	55605
Leech Lake Band of the Minnesota Chippewa Tribe	Burnette	Amy	Tribal Historic Preservation Officer	190 Sailstar Drive NE	Cass Lake	MN	56633
Leech Lake Band of the Minnesota Chippewa Tribe	Jackson	Faron	Chairman	190 Sailstar Drive	Cass Lake	MN	56633
Lower Sioux Indian Community in the State of Minnesota	Larsen	Robert	President	PO Box 308	Morton	MN	56270
Lower Sioux Indian Community in the State of Minnesota	St. John	Cheyenne	THPO	PO Box 308	Morton	MN	56270
Mille Lacs Band of Ojibwe	Benjamin	Melanie	Chief Executive	43408 Oodena Drive	Onamia	MN	56359
Mille Lacs Band of Ojibwe	Kemper	Terry	Tribal Preservation Officer	43408 Oodena Drive	Onamia	MN	56359
Minnesota Chippewa Tribe	Chavers	Catherine	President	P.O. Box 217	Cass Lake	MN	56633
Minnesota Chippewa Tribe	Hull	Rob	THPO (Grand Portage Band)	P.O. Box 482	Grand Portage	MN	55605
Prairie Island Indian Community	Johnson	Johnny	President	5636 Sturgeon Lake Road	Welch	MN	55089
Prairie Island Indian Community	White	Noah	THPO	5636 Sturgeon Lake Road	Welch	MN	55089
Upper Sioux Community, Minnesota	Jensvold	Kevin	Chairman	PO Box 147	Granite Falls	MN	56241
Upper Sioux Community, Minnesota	Odegard	Samantha	THPO	PO Box 147	Granite Falls	MN	56241-0147
White Earth Band of Minnesota Chippewa	Arsenault	Jaime	THPO and NAGPRA Representative	PO Box 418	White Earth	MN	56591
White Earth Band of Minnesota Chippewa	Tibbets	Terrence	Chairperson	PO Box 418	White Earth,	MN	56591
Lower Sioux Indian Community	St. John	Cheyenne	THPO Director	39527 Reservation Highway 1	Morton	MN	56270
Shakopee Mdewakanton Sioux Community	Rudnicki	Bill	Tribal Administrator	2331 Sioux Trail NW	Prior Lake	MN	55372
Bois Forte Band of Chippewa	Strong	Jaylen	THPO	PO Box 165345 Lake Shore Dri	Nett Lake	MN	55772
Red Lake Nation	Ferris	Kade	THPO/Tribal Archaeologist	15484 Mjizizi Drive	Red Lake	MN	56671
Minnesota Indian Affairs Council	Cerda	Melissa	Cultural Resources Specialist, Senior	161 St. Anthony Avenue Suite	St. Paul	MN	55103
Fort Belknap Indian Community	Blackwolf	Michael	THPO	656 Agency Main Street	Harlem	MT	59526-9455
Fort Belknap Indian Community	Stiffarm	Jeffery (Jeff)	President	RR1, Box 66	Harlem	MT	59526-9455
Spirit Lake Tribe, North Dakota	Fox	Susie	Interim Director THPO	P.O. Box 198	Fort Totten	ND	58335-0359
Spirit Lake Tribe, North Dakota	Pearson	Myra	Chairwoman	PO Box 359	Fort Totten	ND	58335-0359
Santee Sioux Nation, Nebraska	Frazier	Misty	THPO	425 Frazier Ave. N. Suite 2	Niobrara	NE	68760
Santee Sioux Nation, Nebraska	Trudell	Roger	Chairperson	108 Spirit Lake Ave. W	Niobrara	NE	68760
Apache Tribe of Oklahoma	Komardley	Bobby	Chairman	PO Box 1330	Anadarko	OK	73005
Cheyenne and Arapaho Tribes, Oklahoma	Bear	Max	THPO	700 Black Kettle Blvd	Concho	OK	73022
Cheyenne and Arapaho Tribes, Oklahoma	Wassana	Reggie	Governor	P.O. Box 38	Concho	OK	73022
Flandreau Santee Sioux Tribe of South Dakota	Kills-A-Hundred	Garrie	THPO	PO Box 283	Flandreau	SD	57028
Flandreau Santee Sioux Tribe of South Dakota	Reider	Anthony	Chairperson	PO Box 283	Flandreau	SD	57028-0283
Sisseton-Wahpeton Oyate of the Lake Traverse Reservation	Beaudreau	Verlyn	Interim Chairperson	PO Box 509	Agency Village	SD	57262-0509
Sisseton-Wahpeton Oyate of the Lake Traverse Reservation	Desrosiers	Dianne	THPO	P.O. Box 907	Sisseton	SD	57262-0509
Bad River Band of the Lake Superior Tribe of Chippewa Indians	Leoso	Edith	THPO	PO Box 39	Odanah	WI	54861
Bad River Band of the Lake Superior Tribe of Chippewa Indians	Wiggins	Michael	Chairman	PO Box 39	Odanah	WI	54861
Lac Vieux Desert Band of Lake Superior Chippewa Indians	Thompson	Sarah	Tribal Preservation Officer	PO Box 67	Lac du Flambeau	WI	54538
Lac Vieux Desert Band of Lake Superior Chippewa Indians	Wildcat, Sr.	Joseph	President	PO Box 67	Lac du Flambeau	WI	54538
Menominee Indian Tribe of Wisconsin	Corn Sr.	Ron	Chairman	PO Box 910	Keshena	WI	54135
Menominee Indian Tribe of Wisconsin	Grignon	David	Tribal Historic Preservation Officer	PO Box 910	Keshena	WI	54135-0910
Red Cliff Band of Lake Superior Chippewa Indians	Boyd	Christopher	Chairperson	88385 Pike Road	Bayfield	WI	54814
Red Cliff Band of Lake Superior Chippewa Indians	Boyd	Christopher	THPO	88385 Pike Road	Bayfield	WI	54814
Sokaogon Chippewa Community, Wisconsin	McGeshick	Garland	Chairperson	3051 Sand Lake Road	Crandon	WI	54520



414 Nicollet Mall
Minneapolis, MN 55401

May 4, 2023

<Address Block>

RE: Notification for the Proposed 250 MW Sherco Solar 3 Project in Sherburne County, Minnesota

Dear <Name>,

Northern States Power Company, doing business as Xcel Energy, is gathering information and requesting comments for a proposed utility-scale solar-energy project in Sherburne County, Minnesota, the Sherco Solar 3 Project (“Project”). Xcel Energy will be submitting an application to the Minnesota Public Utilities Commission (“PUC”) for this 250 MW solar-energy generation facility. Upon receipt of applicable permits and approvals, Xcel Energy anticipates construction beginning in 2024 and commencement of commercial operation by the end of 2025.

The Project encompasses approximately 1,700 acres of agricultural lands located in Clear Lake Township, west of the existing Sherco Coal Generation Plant and the recently permitted Sherco Solar 1, where construction is beginning this spring. Land cover within the Project area is predominantly row crop farmland, most of which utilizes center-pivot-irrigation.


Xcel Energy continues to collect information to inform Project design. The racking layout, access roads, and electrical connections have not been finalized. In general, the Project’s permanent facilities will include:

- Solar modules, inverters, and racking
- Fencing
- Access roads
- On-site below-ground and above-ground electrical collection lines
- Below-ground electrical lines to collection substation

As part of the permitting process Xcel Energy is conducting outreach to potentially interested Tribes, regulatory and government agencies. Recognizing the need for timely and meaningful communication with Tribes as sovereign nations, we are providing notification to Tribes who may have cultural or historical ties in the vicinity of the Project site or associated study area. To facilitate your review, we have enclosed a map of the Project’s location and associated collection system. We are interested in your input regarding the Project and help identifying any potential sites of historic or cultural significance. We welcome any comments you may have at this time and throughout the permit application process.

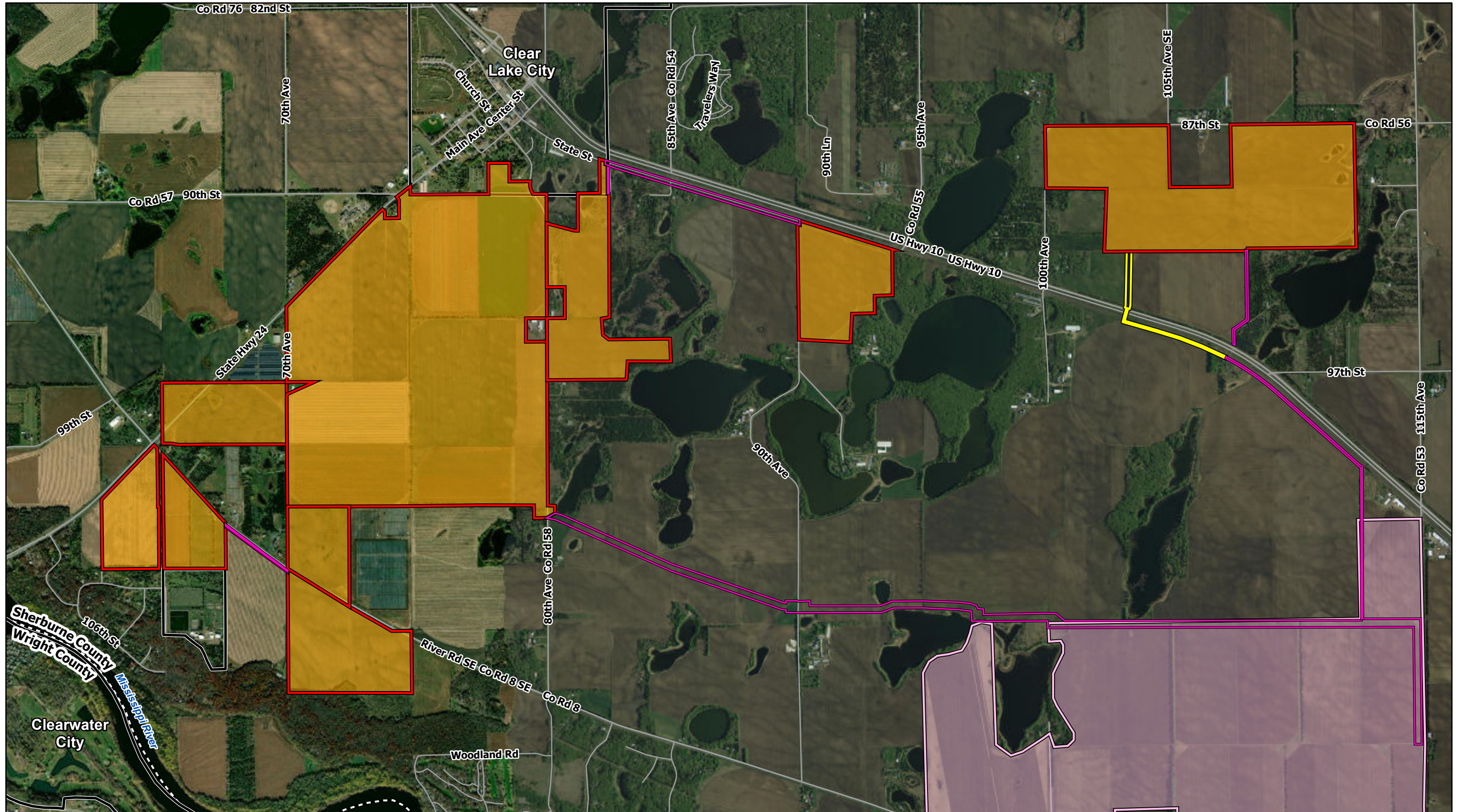
If you require further information or have questions regarding this matter, please contact me at 612-330-6073 or at Ellen.L.Heine@xcelenergy.com.

Sincerely,



Ellen Heine
Principal Siting and Permitting Agent
Xcel Energy

Enclosures: Sherco Solar 3 map



Data Source(s): Westwood (2023); ESRI WMS Imagery Basemap (Accessed 2023); U.S. Census Bureau (2021); USGS NHD (2022); USFWS NWI (2022); MN PWI (2023); FEMA (2022).

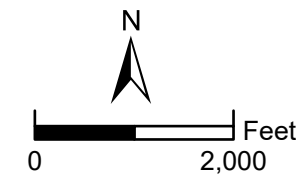
Legend

- Sherco 3 Project Area
- Sherco 3 Collection Corridor
- Sherco 3 Collection Corridor Alternate
- Sherco 1 (West Block) Project Area
- Road
- Municipal Boundary
- County Boundary

Westwood
 Toll Free (888) 937-5150 westwoodsps.com
 Westwood Professional Services, Inc.

Sherco 3 Solar Project

Sherburne County, Minnesota



Appendix C
Agency Responses
Federal Aviation Administration



Mail Processing Center
 Federal Aviation Administration
 Southwest Regional Office
 Obstruction Evaluation Group
 10101 Hillwood Parkway
 Fort Worth, TX 76177

Aeronautical Study No.
 2023-AGL-10553-OE

Issued Date: 06/09/2023

Ellen Heinie
 Xcel Energy
 414 Nicollet Mall
 414-6A
 Minneapolis, MN 55401

**** DETERMINATION OF NO HAZARD TO AIR NAVIGATION ****

The Federal Aviation Administration has conducted an aeronautical study under the provisions of 49 U.S.C., Section 44718 and if applicable Title 14 of the Code of Federal Regulations, part 77, concerning:

Structure: Fence NW Fence Corner
 Location: Clear Lake, MN
 Latitude: 45-26-17.63N NAD 83
 Longitude: 93-58-26.38W
 Heights: 987 feet site elevation (SE)
 20 feet above ground level (AGL)
 1007 feet above mean sea level (AMSL)

This aeronautical study revealed that the structure does not exceed obstruction standards and would not be a hazard to air navigation provided the following condition(s), if any, is(are) met:

It is required that FAA Form 7460-2, Notice of Actual Construction or Alteration, be e-filed any time the project is abandoned or:

- At least 10 days prior to start of construction (7460-2, Part 1)
- Within 5 days after the construction reaches its greatest height (7460-2, Part 2)

Based on this evaluation, marking and lighting are not necessary for aviation safety. However, if marking/lighting are accomplished on a voluntary basis, we recommend it be installed in accordance with FAA Advisory circular 70/7460-1 M.

This determination expires on 12/09/2024 unless:

- (a) the construction is started (not necessarily completed) and FAA Form 7460-2, Notice of Actual Construction or Alteration, is received by this office.
- (b) extended, revised, or terminated by the issuing office.
- (c) the construction is subject to the licensing authority of the Federal Communications Commission (FCC) and an application for a construction permit has been filed, as required by the FCC, within

6 months of the date of this determination. In such case, the determination expires on the date prescribed by the FCC for completion of construction, or the date the FCC denies the application.

NOTE: REQUEST FOR EXTENSION OF THE EFFECTIVE PERIOD OF THIS DETERMINATION MUST BE E-FILED AT LEAST 15 DAYS PRIOR TO THE EXPIRATION DATE. AFTER RE-EVALUATION OF CURRENT OPERATIONS IN THE AREA OF THE STRUCTURE TO DETERMINE THAT NO SIGNIFICANT AERONAUTICAL CHANGES HAVE OCCURRED, YOUR DETERMINATION MAY BE ELIGIBLE FOR ONE EXTENSION OF THE EFFECTIVE PERIOD.

This determination is based, in part, on the foregoing description which includes specific coordinates, heights, frequency(ies) and power. Any changes in coordinates, heights, and frequencies or use of greater power, except those frequencies specified in the Colo Void Clause Coalition; Antenna System Co-Location; Voluntary Best Practices, will void this determination. Any future construction or alteration, including increase to heights, power, or the addition of other transmitters, requires separate notice to the FAA. This determination includes all previously filed frequencies and power for this structure.

If construction or alteration is dismantled or destroyed, you must submit notice to the FAA within 5 days after the construction or alteration is dismantled or destroyed.

This determination does include temporary construction equipment such as cranes, derricks, etc., which may be used during actual construction of the structure. However, this equipment shall not exceed the overall heights as indicated above. Equipment which has a height greater than the studied structure requires separate notice to the FAA.

This determination concerns the effect of this structure on the safe and efficient use of navigable airspace by aircraft and does not relieve the sponsor of compliance responsibilities relating to any law, ordinance, or regulation of any Federal, State, or local government body.

If we can be of further assistance, please contact our office at (847) 294-7458, or fred.souchet@faa.gov. On any future correspondence concerning this matter, please refer to Aeronautical Study Number 2023-AGL-10553-OE.

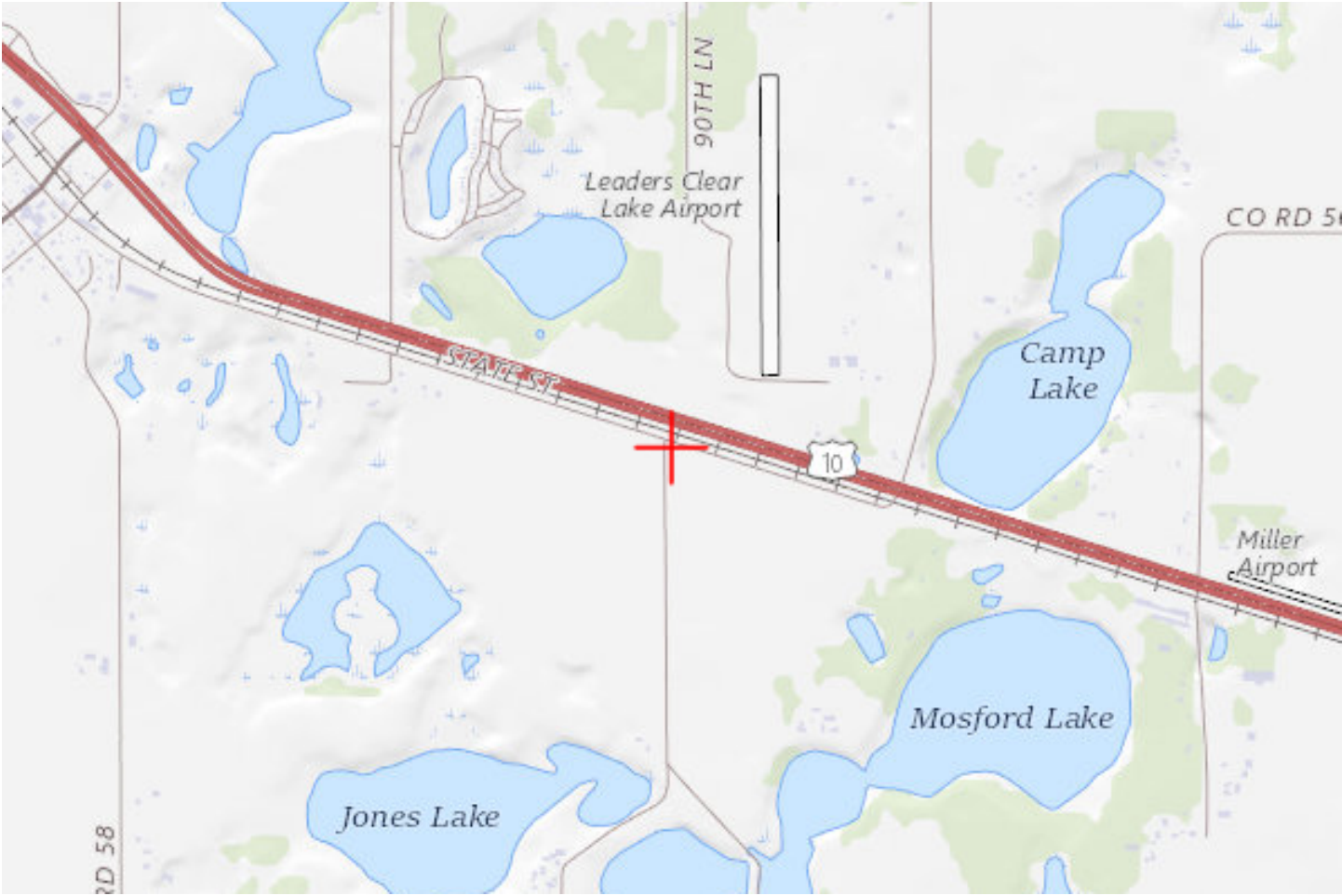
Signature Control No: 587348628-589724075

(DNE)

Fred Souchet
Specialist

Attachment(s)
Map(s)

TOPO Map for ASN 2023-AGL-10553-OE





Mail Processing Center
Federal Aviation Administration
Southwest Regional Office
Obstruction Evaluation Group
10101 Hillwood Parkway
Fort Worth, TX 76177

Aeronautical Study No.
2023-AGL-10552-OE

Issued Date: 06/09/2023

Ellen Heinie
Xcel Energy
414 Nicollet Mall
414-6A
Minneapolis, MN 55401

**** DETERMINATION OF NO HAZARD TO AIR NAVIGATION ****

The Federal Aviation Administration has conducted an aeronautical study under the provisions of 49 U.S.C., Section 44718 and if applicable Title 14 of the Code of Federal Regulations, part 77, concerning:

Structure:	Fence NE Fence Corner
Location:	Clear Lake, MN
Latitude:	45-26-11.67N NAD 83
Longitude:	93-57-59.15W
Heights:	984 feet site elevation (SE) 20 feet above ground level (AGL) 1004 feet above mean sea level (AMSL)

This aeronautical study revealed that the structure does not exceed obstruction standards and would not be a hazard to air navigation provided the following condition(s), if any, is(are) met:

It is required that FAA Form 7460-2, Notice of Actual Construction or Alteration, be e-filed any time the project is abandoned or:

- At least 10 days prior to start of construction (7460-2, Part 1)
 Within 5 days after the construction reaches its greatest height (7460-2, Part 2)

Based on this evaluation, marking and lighting are not necessary for aviation safety. However, if marking/lighting are accomplished on a voluntary basis, we recommend it be installed in accordance with FAA Advisory circular 70/7460-1 M.

This determination expires on 12/09/2024 unless:

- (a) the construction is started (not necessarily completed) and FAA Form 7460-2, Notice of Actual Construction or Alteration, is received by this office.
- (b) extended, revised, or terminated by the issuing office.
- (c) the construction is subject to the licensing authority of the Federal Communications Commission (FCC) and an application for a construction permit has been filed, as required by the FCC, within

6 months of the date of this determination. In such case, the determination expires on the date prescribed by the FCC for completion of construction, or the date the FCC denies the application.

NOTE: REQUEST FOR EXTENSION OF THE EFFECTIVE PERIOD OF THIS DETERMINATION MUST BE E-FILED AT LEAST 15 DAYS PRIOR TO THE EXPIRATION DATE. AFTER RE-EVALUATION OF CURRENT OPERATIONS IN THE AREA OF THE STRUCTURE TO DETERMINE THAT NO SIGNIFICANT AERONAUTICAL CHANGES HAVE OCCURRED, YOUR DETERMINATION MAY BE ELIGIBLE FOR ONE EXTENSION OF THE EFFECTIVE PERIOD.

This determination is based, in part, on the foregoing description which includes specific coordinates, heights, frequency(ies) and power. Any changes in coordinates, heights, and frequencies or use of greater power, except those frequencies specified in the Colo Void Clause Coalition; Antenna System Co-Location; Voluntary Best Practices, will void this determination. Any future construction or alteration, including increase to heights, power, or the addition of other transmitters, requires separate notice to the FAA. This determination includes all previously filed frequencies and power for this structure.

If construction or alteration is dismantled or destroyed, you must submit notice to the FAA within 5 days after the construction or alteration is dismantled or destroyed.

This determination does include temporary construction equipment such as cranes, derricks, etc., which may be used during actual construction of the structure. However, this equipment shall not exceed the overall heights as indicated above. Equipment which has a height greater than the studied structure requires separate notice to the FAA.

This determination concerns the effect of this structure on the safe and efficient use of navigable airspace by aircraft and does not relieve the sponsor of compliance responsibilities relating to any law, ordinance, or regulation of any Federal, State, or local government body.

If we can be of further assistance, please contact our office at (847) 294-7458, or fred.souchet@faa.gov. On any future correspondence concerning this matter, please refer to Aeronautical Study Number 2023-AGL-10552-OE.

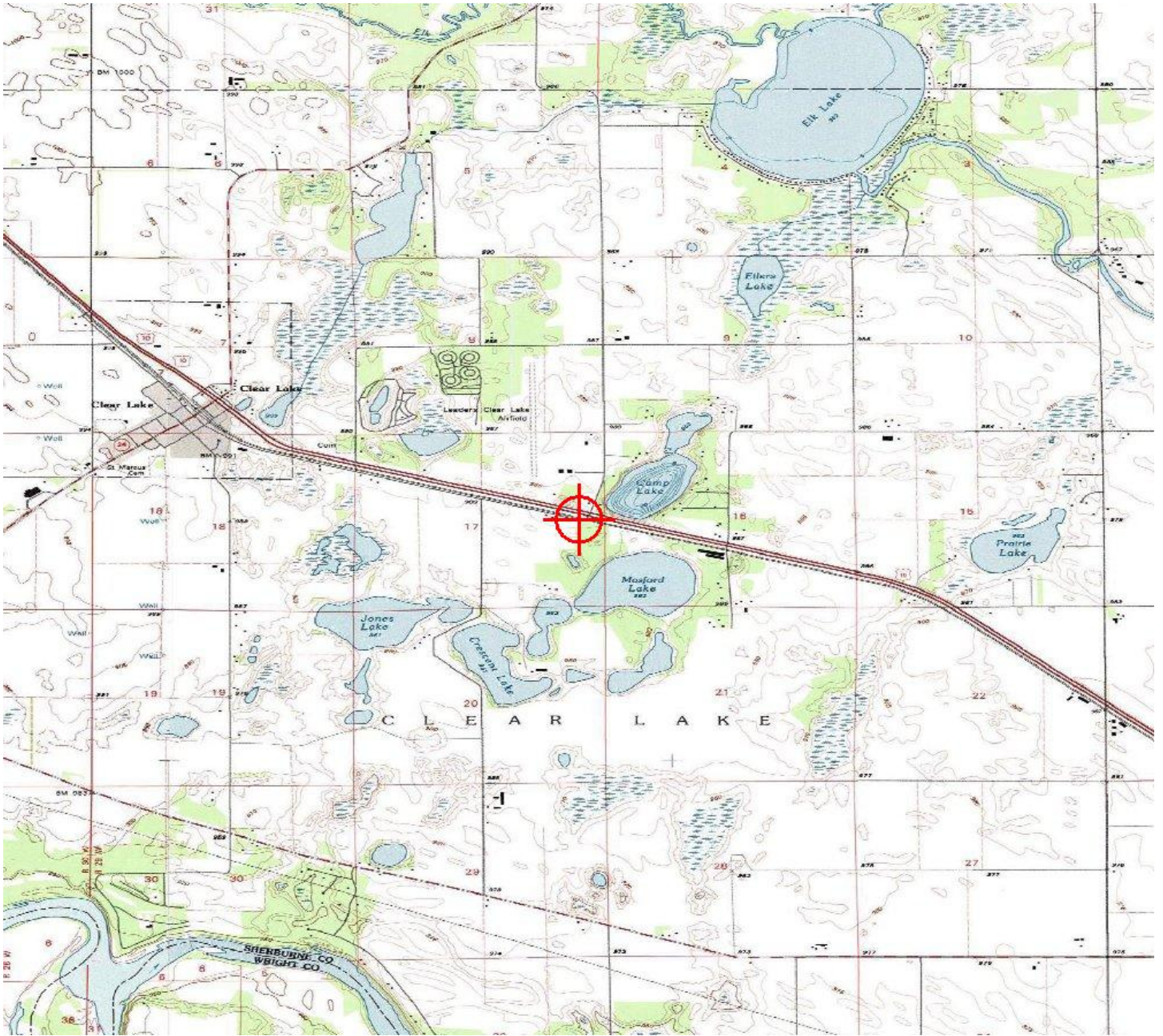
Signature Control No: 587348621-589724076

(DNE)

Fred Souchet
Specialist

Attachment(s)
Map(s)

TOPO Map for ASN 2023-AGL-10552-OE



From: [Hahn, Robert \(FAA\)](#)
To: [Heine, Ellen L](#)
Cc: ["Jarvis, Timothy \(DOT\)"; Schindler, Kate D; Shannon Hansen](#)
Subject: RE: Proposed Solar Farm Fields - Sherburne County - FAA DAK-MIN-ADO Response
Date: Thursday, May 11, 2023 2:56:02 PM

Ellen,

No problem – glad you are using the ‘Notice Criteria Tool’. It is really only looking at height obstructions though.

In this case, it is more of a glare concern with the site just being south of Clear Lake Airport (8Y6). That is why I copied Tim Jarvis at MnDOT – it is in more of their area than mine.

Thanks,

Robert Hahn
FAA - Dakota-Minnesota ADO
6020 28th Ave S
Suite 102
Minneapolis, MN 55450-2700
W 612-253-4639
E-mail: Robert.Hahn@faa.gov

From: Heine, Ellen L <Ellen.L.Heine@xcelenergy.com>
Sent: Thursday, May 11, 2023 2:43 PM
To: Hahn, Robert (FAA) <Robert.Hahn@faa.gov>
Cc: 'Jarvis, Timothy (DOT)' <Timothy.Jarvis@state.mn.us>; Schindler, Kate D <Kathleen.Schindler@xcelenergy.com>; Shannon Hansen <Shannon.Hansen@westwoodps.com>
Subject: RE: Proposed Solar Farm Fields - Sherburne County - FAA DAK-MIN-ADO Response

Thanks Robert,

Xcel Energy used the Notice Criteria Tool to determine FAA filing requirements for the Project. A total of 38 points around the perimeter of each Unit were submitted on May 4, 2024 using the coordinates of each corner. The FAA determined that two points exceed the Notice Criteria due to their proximity to a navigational facility (Leaders Clear Lake airport) and require filing. The two points are associated with Unit 8 and are located on the northeast and northwest corners. I realized we didn't label the units on the original map we sent, so have attached one here with that Unit identified. It's the area you noted that is south of the Clear Lake Airport. Xcel Energy will file the required FAA 7460-1 (Notice of Proposed Construction or Alteration) forms. The remaining 36 points did not exceed Notice Criteria and do not require FAA filings.

Ellen

p.s. I see you also received my letter for the transmission line project. I'll make sure we update our contact lists with your information for future mailings and communications.

Ellen Heine

Xcel Energy

P: 612.330.6073 **C:** 651-247-0957

E: ellen.l.heine@xcelenergy.com

From: Hahn, Robert (FAA) <Robert.Hahn@faa.gov>

Sent: Tuesday, May 9, 2023 4:33 PM

To: Heine, Ellen L <Ellen.L.Heine@xcelenergy.com>

Cc: 'Jarvis, Timothy (DOT)' <Timothy.Jarvis@state.mn.us>

Subject: Proposed Solar Farm Fields - Sherburne County - FAA DAK-MIN-ADO Response

You don't often get email from robert.hahn@faa.gov. [Learn why this is important](#)

EXTERNAL - STOP & THINK before opening links and attachments.

Ms. Heine,

After reviewing the solar panel farm site in Sherburne County, I would recommend filing to the FAA's public OE/AAA site (see the below) for strategic points to help define each solar field's configuration.

[Obstruction Evaluation / Airport Airspace Analysis \(OE/AAA\) \(faa.gov\)](#)

Note: Especially, the solar field south of the Clear Lake Airport (8Y6). The panels are probably under the 50:1 notification surface (see the above site for criteria w/ 8Y6 runway 3,000' long). But, to get something in writing from the FAA – filing at this web site would accomplish this.

Please contact me if I can be of further help.

Sincerely,

Robert Hahn

FAA - Dakota-Minnesota ADO

6020 28th Ave S

Suite 102

Minneapolis, MN 55450-2700

W 612-253-4639

E-mail: Robert.Hahn@faa.gov

Appendix C
Agency Responses
MN Department of Commerce

May 2, 2023

Ellen Heine
Xcel Energy
414 Nicollet Mall
Minneapolis, MN 55401

Dear Ms. Heine,

Thank you for submitting a solar size determination request for Xcel Energy's proposed 250 MW Sherco Solar 3 project in Sherburne County.

The Department is responsible for reviewing these applications to determine "whether a combination of solar energy generating systems meets the definition of large electric power generating plant and is subject to the commission's siting authority jurisdiction" (Minnesota Statute 216E.021, Subd. a).

Based on information provided by Xcel Energy, and based on criteria established in the statute, the Department has determined that the Sherco Solar 3 project is not associated with other planned solar projects in a way that would require them to be combined into a single project. However, given that the project on its own has a generating capacity of 250 MW, the Department determines that the Sherco Solar 3 project is subject to the Public Utilities Commission's siting authority and must submit an application for a site permit under the Power Plant Siting Act (Minnesota Statute 216E).

Xcel Energy has the right to dispute this determination with the Chair of the Public Utilities Commission.

I am available to answer any questions you might have.

Sincerely,



Ray Kirsch
Energy Environmental Review and Analysis

cc: Bret Eknes, Public Utilities Commission
Ian Dobson, Xcel Energy

Appendix C
Agency Responses
U.S. Fish and Wildlife Service

From: [Heine, Ellen L](#)
To: [Marsh, Dawn S](#)
Cc: [Schindler, Kate D](#); [Shannon Hansen](#); [Ellie Boisen](#)
Subject: RE: [EXTERNAL] RE: Sherco Solar 3 Project - USFWS Comments
Date: Thursday, June 8, 2023 5:07:00 PM

Good deal, thanks!

I'm not sure if we quantified acres because I believe they are only in rows along the fields. But we can get you a map that shows those areas.

Ellen Heine
Xcel Energy
P: 612.330.6073 C: 651-247-0957
E: ellen.l.heine@xcelenergy.com

From: Marsh, Dawn S <dawn_marsh@fws.gov>
Sent: Thursday, June 8, 2023 4:32 PM
To: Heine, Ellen L <Ellen.L.Heine@xcelenergy.com>
Cc: Schindler, Kate D <Kathleen.Schindler@xcelenergy.com>; Genesis Mickel <Genesis.Mickel@westwoodps.com>
Subject: Re: [EXTERNAL] RE: Sherco Solar 3 Project - USFWS Comments

You don't often get email from dawn_marsh@fws.gov. [Learn why this is important](#)

EXTERNAL - STOP & THINK before opening links and attachments.

Hi Ellen,

Yes, the 1,000-foot setback from forested areas is typically what we recommend for wind projects. Sorry for the confusion!

On a related note - Can you remind me how many acres of trees will be removed for this project?

Thank you,
Dawn

Dawn Marsh (she/her/hers) | Fish and Wildlife Biologist
U.S. Fish & Wildlife Service | Minnesota-Wisconsin Field Office
3815 American Blvd. E., Bloomington, MN 55425
Mobile: (612) 283-8054

From: Heine, Ellen L <Ellen.L.Heine@xcelenergy.com>
Sent: Tuesday, June 6, 2023 11:42 AM
To: Marsh, Dawn S <dawn_marsh@fws.gov>
Cc: Schindler, Kate D <Kathleen.Schindler@xcelenergy.com>; Genesis Mickel <Genesis.Mickel@westwoodps.com>

Subject: [EXTERNAL] RE: Sherco Solar 3 Project - USFWS Comments

This email has been received from outside of DOI - Use caution before clicking on links, opening attachments, or responding.

Hi Dawn,

Thanks for the response. After reviewing the recommendations below we were hoping to get some clarity around the recommendation for the 1000 foot setback from any wooded areas. As designed, the Project will have minimal tree clearing, primarily shelterbelts along ag fields. However solar panels and fencing will be fairly close to some wooded areas. If we were to utilize a 1000 foot setback of Project facilities from any wooded areas it would actually eliminate several parcels from the project altogether. It seems that solar panels near forested areas would not negatively impact the bats' ability to forage. We were wondering if that recommendation came from standard wind farm setback recommendations? If that is not the case could we set up some time for a call to discuss?

Thanks,

Ellen

Ellen Heine

Xcel Energy

P: 612.330.6073 **C:** 651-247-0957

E: ellen.l.heine@xcelenergy.com

From: Marsh, Dawn S <dawn_marsh@fws.gov>

Sent: Tuesday, May 30, 2023 3:59 PM

To: Heine, Ellen L <Ellen.L.Heine@xcelenergy.com>

Subject: Sherco Solar 3 Project - USFWS Comments

EXTERNAL - STOP & THINK before opening links and attachments.

Good afternoon,

Thank you for the opportunity to comment on the proposed Sherco Solar 3 Project site location and project in Sherburne County, Minnesota. The U.S. Fish and Wildlife Service (Service) provides comments on the proposed location and activities described in your letter dated May 2, 2023. Because the proposed project could impact federal trust resources, we are providing the following comments pursuant to the Endangered Species Act (ESA) and the Bald and Golden Eagle Protection Act to help inform project planning and development.

The Service provides the following specific comments for species that could occur in the proposed project area.

Impacts to Listed Species

Northern Long-Eared Bat (*Myotis septentrionalis*, Endangered)

The northern long-eared bat (NLEB) has the potential to occur in Sherburne County and may occur within the proposed project boundary. Suitable habitat for NLEB within the project area is limited; however, the Service **recommends a 1,000-foot setback from any wooded areas where NLEB may forage**. This minimization measure, coupled with tree clearing activities conducted during the [inactive bat season\(s\)](#), will also benefit other bat species.

Whooping Crane (*Grus americana*, Nonessential Experimental Population)

The whooping crane has been designated a nonessential experimental population under the Endangered Species Act in a 20-state area of the eastern United States including Minnesota. While there is no suitable habitat for breeding and nesting in the project area, whooping cranes may use the agricultural fields as stopover during migration. Whooping crane presence is unlikely, and the loss of low-quality stopover habitat is not likely to negatively impact the species.

Tricolored Bat (*Perimyotis subflavus*, Proposed Endangered)

On September 14, 2022, the Service published a proposal in the Federal Register to list the tricolored bat (TCB) as endangered under the Endangered Species Act. The Service has up to 12 months from the date the proposal published to make a final determination, either to list the tricolored bat under the Act or to withdraw the proposal. The Service determined the bat faces extinction primarily due to the range-wide impacts of WNS. Because TCB populations have

been greatly reduced due to WNS, surviving bat populations are now more vulnerable to other stressors such as human disturbance and habitat loss. Species proposed for listing are not afforded protection under the Act; however, as soon as a listing becomes effective (typically 30 days after publication of the final rule in the Federal Register), the prohibitions against jeopardizing its continued existence and “take” will apply. Therefore, if this project or other future or existing projects have the potential to adversely affect TCB after the potential new listing goes into effect, we recommend that the effects of the project on TCB and their habitat be considered to determine whether authorization under ESA section 7 or 10 may be necessary if the proposed endangered listing rule is finalized. Projects or programs with an existing section 7 biological opinion may require reinitiation of consultation, and projects with an existing section 10 incidental take permit may require an amendment to provide uninterrupted authorization for covered activities.

The TCB is a small insectivorous bat that typically overwinters in caves, abandoned mines and tunnels, and road-associated culverts (southern portion of the range) and spends the rest of the year in forested habitats, typically roosting among live and dead leaf clusters in tree branches. For more information on TCB and the proposed rule, please see: <https://www.fws.gov/species/tricolored-bat-perimyotis-subflavus> and for more information on WNS, please see: <https://www.whitenosesyndrome.org/>

The ESA {section 7(a)(4)} requires federal agencies to consider whether their actions may jeopardize a species proposed for federal listing (i.e., conduct a jeopardy analysis). If a proposed action is deemed likely to jeopardize a proposed species (or adversely modify proposed critical habitat - none has been proposed for TCB), then the federal action agency is required to confer with the Service, but the prohibition against carrying out such an action (i.e., a project that would jeopardize the species) does not go into effect until the listing itself is finalized and effective. The Service suggests that projects that do not result in adverse impacts to NLEB (i.e., "no effect" or "may affect, not likely to adversely affect" determinations) or TCB would not rise to the level of jeopardy for TCB. The Service recommends action agencies include a written jeopardy analysis (including a conceptual logic path) for the TCB in their administrative record for each project that they have determined may affect the species.

Impacts to Eagles

Bald eagles, golden eagles, and their nests are protected under the Eagle Act. The Eagle Act prohibits, except when authorized by a permit, the taking of bald and golden eagles and defines “take” as “pursue, shoot, shoot at, poison, wound, kill, capture, trap, collect, molest or disturb.” The Eagle Act’s implementing regulations define disturb as “...to agitate or bother a bald or golden eagle to a degree that causes, or is likely to cause, based on the best scientific information available, (1) injury to an eagle, (2) a decrease in its productivity, by substantially interfering with normal breeding, feeding, or sheltering behavior, or (3) nest abandonment, by substantially interfering with normal breeding, feeding, or sheltering behavior.”

Our [National Bald Eagle Management Guidelines](#) are intended to help people protect eagle nests and avoid “disturbance” of eagles as required by the Eagle Act. We have also developed guidance to help determine if you may need an [incidental take permit for bald eagles](#) if disturbance cannot be avoided. If your project may impact a bald eagle nest, or you anticipate that you will be unable to avoid disturbing bald eagles, please contact us regarding the Eagle Act permit process.

Site Selection and Layout Recommendations:

1. Select a site with the least wildlife value practicable. Sites such as vehicle parking areas (using elevated solar panels), commercial roof tops, brownfields, industrial developments, or municipal solid waste landfills may provide adequate space for a solar development and have no impact to existing wildlife habitat. Additionally, developing solar with compatible forms of agriculture (e.g., “dual-use farming”) may allow for continued crop production or grazing by using elevated solar panels and minimize the potential for additional loss of wildlife habitat.
2. If low wildlife value sites are not feasible, we suggest avoiding or minimizing to the greatest degree the conversion of forested areas, native grasslands, and wetlands. These areas provide important habitat for a variety of species and help protect water quality.
3. Plan the site to help ensure bat habitat is adequately protected by minimizing the removal of forested habitat and protecting forested hedgerows or other forested corridors connecting areas of suitable bat habitat.
4. For other threatened or endangered species identified in the official IPaC Species List, determine if their habitat is present in the project action area. If suitable habitat is present, plan to avoid impacts to listed species’ habitat. If habitat impacts cannot be avoided, we suggest conducting appropriate surveys to confirm species presence.
5. Identify bald eagle nests that are within or near the project site to help inform project layout. Bald eagle nests are large (4-6 feet in diameter and 3 feet deep, on average) and therefore noticeable, especially when in deciduous trees after leaf drop.
6. Plan the site to provide habitat for pollinators. Many pollinators are declining, including species that pollinate key agricultural crops and help maintain natural plant communities. Planting a diverse group of native plants around and under solar panels will help support the nutritional needs of Minnesota’s pollinators. We recommend a mix of flowering trees, shrubs, and herbaceous plants so that something is always in bloom and pollen is available during the active periods of pollinators (mid-March to mid-October).

7. Incorporate a water source (e.g., ephemeral pool or low area) to provide additional resources for pollinators and bats.

Project Construction Recommendations:

1. When removing potential wildlife habitat is necessary, avoid spring and summer (March 15-August 15) when feasible to help prevent the loss of nests, non-mobile young, and help wildlife populations maintain productivity.
2. Consider voluntary mitigation in addition to any required mitigation to offset the loss of forested areas, wetlands, or native grasslands.
3. Use construction techniques and materials (wildlife friendly erosion control materials) that are not likely to cause additional harm to wildlife.
4. Implement measures to reduce the chances that equipment will exacerbate the spread of invasive species into natural habitats (e.g., cleaning equipment prior to accessing the site, post-site restoration monitoring, and invasive plant treatments, as necessary).
5. Any above ground electrical transmission lines or other equipment should follow the [Avian Power Line Interaction Committee guidelines](#) for minimizing avian electrocution and collision risk.

Thank you for the opportunity to comment on the proposed Sherco Solar 3 Project. Should you have any questions or concerns, or if the status of any species that may be present in the project area changes, please do not hesitate to contact me via email (Dawn_Marsh@fws.gov) or phone (612-283-8054).

Dawn

Dawn Marsh (she/her/hers) | Fish and Wildlife Biologist
U.S. Fish & Wildlife Service | Minnesota-Wisconsin Field Office
3815 American Blvd. E., Bloomington, MN 55425
Mobile: (612) 283-8054

Appendix D

Landowner List

**Appendix D
Landowner List**

Solar Leases	
Landowner	Address
Dell Hays and Sons	PO BOX 177, Big Lake, MN 55309
Eiler Bros	11509 77TH ST, Clear Lake, MN 55319
Gary Kiffmeyer Trust	5541 HAVEN RD SE, St. Cloud MN 56304
Gray Potato Farm Partnership	9029 80TH AVE SE, Clear Lake MN 55319
Hinterland Family LLP	7378 43RD AVE SE, St Cloud, MN 56304
Katheryn Gray Trust	9029 80TH AVE SE, Clear Lake MN 55319
Kevin Goenner Trust	9536 110th Ave SE, Clear Lake, MN 55319
Lee Century Farms LLC	PO BOX 215, Becker, MN 55308
Michael J & Diane M McDonald Trust	7555 57TH ST SE, St Cloud, MN 56304
Penny L. Hammer Trust	7378 43RD AVE SE, St Cloud, MN 56304
William and Collen Kiffmeyer	8010 CENTER ST, Clear Lake, MN 55319
Collection Line Routes -Land Right Secured	
Landowner	Address
Steven Beck Trust	19073 St Highway 15, Kimball, MN
Beverly Peterson LLC	19993 182nd Ave NW, Big Lake, MN 55309
Glenn and Patricia Goenner Trusts	9772 100th Ave SE, Clear Lake, MN 55319
Brian Goenner Trust	9703 110th Ave SE, Clear Lake, MN 55319
Kevin Goenner Trust	9536 110th Ave SE, Clear Lake, MN 55319
Dell Hays and Sons	PO BOX 177, Big Lake, MN 55309
Proposed Collection Line Route - Potential Land Rights Needed	
Landowner	Address
Glenn and Patricia Goenner Trusts	9772 100th Ave SE, Clear Lake, MN 55319
Brian Goenner Trust	9703 110th Ave SE, Clear Lake, MN 55319
Daniel Pearson	9241 100TH AVE SE, Clear Lake, MN 55319
Kent Rental Real Estate, LLC	17135 77TH ST SE, Becker, MN 55319
Edling Family Trust	13562 SUNSET DR, Becker, MN 55308
Rademacher Trust	15920 Saint Andrews LN, Ramsey, MN 55303

Appendix E

Proximity of Residences to Project Area

Appendix E
Proximity of Residences to the Project

Residence ¹	Location	Existing Vegetative Screening ²	Distance (feet) ³ to:		
			Project Area	Solar Arrays	Nearest Inverter
Unit 1					
U01-01	West side of Church St; north of Unit 1	Limited	123.9	325.2	902.4
U01-02	East side of 80th Ave SE; east side of Unit 1	Limited	174.1	382.8	728.1
U01-03	East side of 80th Ave SE; east side of Unit 1	Limited	265.2	474.4	827.7
U01-04	East side of 80th Ave SE; east side of Unit 1	Limited	250.0	440.4	785.8
U01-05	East side of 80th Ave SE; east side of Unit 1	Moderate	144.3	336.4	671.0
U01-06	East side of 80th Ave SE; east side of Unit 1	Moderate	169.8	362.2	714.0
U01-07	West side of 70th Ave SE; west side of Unit 1 and southeast side of Unit 7	Limited	168.3	311.6	619.3
U01-08	East side of 70th Ave SE; west side of Unit 1 and northeast side of Unit 7	Limited	72.2	196.6	597.8
U01-09	Northwest side of State Highway 24; northwest side of Unit 1	Limited	315.7	469.0	865.7
U01-10	Southwest side of State Highway 24; north side of Unit 1	Moderate	114.0	245.5	735.8
U01-11	South side of Main Ave; north side of Unit 1	Moderate	42.0	317.9	755.5
U01-12	Northwest side of Main Ave/State Highway 24; northwest side of Unit 1	Limited	254.9	590.3	1,101.5
U01-13	Southeast side of Main Ave; north side of Unit 1	Moderate	465.4	928.6	1,507.7
U01-14	Southwest side of Market St and southeast side of Main Ave; north side of Unit 1	Moderate	415.9	940.7	1,564.9
U01-15	Southwest side of Market St; north side of Unit 1	Moderate	308.0	827.2	1,465.8
U01-16	Southeast side of Market St; north side of Unit 1	Moderate	169.0	763.5	1,397.5
U01-17	Southeast side of Market St; north side of Unit 1	Limited	265.3	859.2	1,477.7

Appendix E
Proximity of Residences to the Project

Residence ¹	Location	Existing Vegetative Screening ²	Distance (feet) ³ to:		
			Project Area	Solar Arrays	Nearest Inverter
U01-18	Southeast side of Market St; north side of Unit 1	Limited	326.8	921.0	1,516.9
U01-19	Northwest side of Market St; north side of Unit 1	Limited	449.2	1,043.1	1,657.0
U01-20	Southeast side of Market St; north side of Unit 1	Moderate	437.9	1,032.6	1,606.7
U01-21	Southwest side of Church St; north side of Unit 1	Limited	154.3	743.2	1,306.4
U01-22	Northeast side of Church St and northwest side of Church Cir; north side of Unit 1	Moderate	587.9	1,012.8	1,618.8
U01-23	Northeast side of Church St and southwest side of Church Cir; north side of Unit 1	Moderate	570.6	822.5	1,446.6
U01-24	East side of 80th Ave SE; east side of Unit 1	Limited	428.2	618.3	1,025.3
U01-25	East side of 80th Ave SE; east side of Unit 1	Limited	191.0	681.4	1,329.8
U01-26	West side of 80th Ave SE; southeast side of Unit 1	Limited	150.4	1,198.9	1,712.0
U01-27	West side of 80th Ave SE; southeast side of Unit 1	Limited	595.9	1,372.4	1,956.0
U01-28	East side of 80th Ave SE; southeast side of Unit 1	Moderate	977.9	1,955.3	2,527.8
U01-29	Northeast side of River Rd SE; west side of Unit 1 and east side of Unit 3	Limited	659.8	796.0	1,102.2
U01-30	Northwest side of Main Ave/State Highway 24; northwest side of Unit 1	Limited	587.9	860.6	1,238.3
U01-31	Southeast side of Main Ave/State Highway 24; north side of Unit 1	Moderate	456.5	701.8	1,110.5
U01-32	Southeast side of Main Ave/State Highway 24; north side of Unit 1	Moderate	641.3	887.3	1,330.1
U01-33	Northwest side of Main Ave/State Highway 24; north side of Unit 1	Limited	825.3	1,071.1	1,491.8

Appendix E
Proximity of Residences to the Project

Residence ¹	Location	Existing Vegetative Screening ²	Distance (feet) ³ to:		
			Project Area	Solar Arrays	Nearest Inverter
U01-34	Northwest side of Main Ave/State Highway 24 and southwest side of Clark St; north side of Unit 1	Moderate	983.3	1,228.4	1,619.8
U01-35	Northwest side of Main Ave/State Highway 24 and southwest side of Clark St; north side of Unit 1	Moderate	895.6	1,146.2	1,588.4
U01-36	Southeast side of Main Ave/State Highway 24; north side of Unit 1	Limited	754.5	1,000.9	1,473.4
U01-37	Southeast side of Main Ave/State Highway 24; north side of Unit 1	Moderate	638.8	885.6	1,341.4
U01-38	Southeast side of Main Ave/State Highway 24 and southwest side of Clark St; north side of Unit 1	Limited	738.7	1,081.1	1,530.9
U01-39	Northwest side of Main Ave/State Highway 24 and southwest side of Clark St; north side of Unit 1	Limited	847.0	1,192.8	1,652.2
U01-41	Northwest side of Main Ave/State Highway 24 and northeast side of Clark St; north side of Unit 1	Limited	792.9	1,221.2	1,716.5
U01-43	Northwest side of Main Ave/State Highway 24; north side of Unit 1	Limited	780.3	1,246.2	1,774.0
U01-45	Southeast side of 1st Ave W and southwest side of Brooks St; north side of Unit 1	Moderate	928.5	1,437.9	1,990.3
U01-46	Northwest side of Main Ave/State Highway 24 and southwest side of Brooks St; north side of Unit 1	Moderate	775.0	1,271.3	1,826.4
U01-47	Southeast side of Brooks St; north side of Unit 1	Moderate	526.3	1,100.1	1,756.0
U01-48	Northwest side of Market St; north side of Unit 1	Limited	548.0	1,142.2	1,734.5
U01-49	Northwest side of Market St and southeast side of Main Ave/State Highway 24; north side of Unit 1	Moderate	631.9	1,225.8	1,832.8
U01-50	Southeast side of Main Ave/State Highway 24; north side of Unit 1	Limited	712.7	1,308.1	1,930.3

Appendix E
Proximity of Residences to the Project

Residence ¹	Location	Existing Vegetative Screening ²	Distance (feet) ³ to:		
			Project Area	Solar Arrays	Nearest Inverter
U01-51	Northwest side of Main Ave/State Highway 24 and northeast side of Arnold St; north side of Unit 1	Moderate	930.8	1,525.9	2,162.4
U01-52	Northwest side of Market St; north side of Unit 1	Moderate	587.9	1,182.3	1,765.4
U01-53	Northwest side of Main Ave/State Highway 24; north side of Unit 1	Dense	752.2	1,346.1	1,954.2
U01-54	Southwest side of Church St and southeast side of Market St; north side of Unit 1	Moderate	438.2	1,032.3	1,595.4
U01-55	Southeast side of Market St and southwest side of Church St; north side of Unit 1	Moderate	510.1	1,105.0	1,673.3
U01-56	Southwest side of Church St and northwest side of Market St; north side of Unit 1	Moderate	679.3	1,274.0	1,848.1
U01-57	Southwest side of Church St and northwest side of Market St; north side of Unit 1	Moderate	778.9	1,373.4	1,950.7
U01-58	Southeast side of Main Ave/State Highway 24 and southwest side of Church St; north side of Unit 1	Moderate	859.3	1,453.6	2,039.5
U01-59	Southeast side of Main Ave/State Highway 24; north side of Unit 1	Dense	804.0	1,398.0	1,996.6
U01-60	Northeast side of Church St and northwest side of Church Cir; north side of Unit 1	Moderate	471.4	982.1	1,564.7
U01-61	Northeast side of Church St; north side of Unit 1	Moderate	493.3	1,034.4	1,610.2
U01-62	Northeast side of Church St; north side of Unit 1	Limited	571.8	1,137.7	1,708.1
U01-63	Northwest side of Church St and southeast side of Market St; north side of Unit 1	Moderate	701.3	1,285.7	1,851.5
U01-64	Northwest side of Church Cir; northeast side of Unit 1	Moderate	642.6	1,117.8	1,715.6
U01-65	Northwest side of Church Cir and southwest side of State St; northeast side of Unit 1	Moderate	735.4	1,191.7	1,796.3

Appendix E
Proximity of Residences to the Project

Residence ¹	Location	Existing Vegetative Screening ²	Distance (feet) ³ to:		
			Project Area	Solar Arrays	Nearest Inverter
U01-66	Southeast side of Market St and southeast side of State St; northeast side of Unit 1	Dense	795.4	1,367.0	1,937.5
U01-67	Southwest side of State St and southeast side of Market St; northeast side of Unit 1	Moderate	817.0	1,328.7	1,920.8
U01-68	Southwest side of State St and north side of Church Cir; northeast side of Unit 1	Dense	848.9	1,310.5	1,916.5
Unit 2					
U02-01	East side of 80th Ave SE; north internal pocket of Unit 2	Moderate	147.8	442.0	1,042.2
U02-02	East side of 80th Ave SE; northcentral internal pocket of Unit 2	Moderate	116.8	280.8	669.1
U02-03	East side of 80th Ave SE; southwest side of Unit 2	Limited	158.7	306.7	799.3
U02-04	Southwest side of State St; northwest side of Unit 2	Moderate	812.6	1,193.1	1,812.3
U02-05	Southwest side of State St; northwest side of Unit 2	Moderate	859.3	1,161.1	1,788.3
U02-06	Southwest side of State St; northwest side of Unit 2	Moderate	776.5	1,016.2	1,645.3
U02-07	Southeast side of Church Cir; northwest side of Unit 2	Moderate	679.5	970.6	1,595.4
U02-08	Southwest side of State St and southeast side of Church Cir; northwest side of Unit 2	Moderate	688.5	930.1	1,559.8
U02-09	Northeast side of Church St; northwest side of Unit 2	Moderate	587.5	832.2	1,461.7
U02-10	Southwests side of State St; northeast side of Unit 2	Moderate	555.4	1,487.6	2,094.3
U02-11	South side of State St; east side of Unit 2	Limited	641.6	1,075.3	1,706.1
U02-12	East side of Church St; east side of Unit 2	Moderate	341.5	587.4	1,215.8
Unit 3					
U03-01	Northeast side of River Rd SE; northeast side of Unit 4	Moderate	183.8	335.2	1,064.7

Appendix E
Proximity of Residences to the Project

Residence ¹	Location	Existing Vegetative Screening ²	Distance (feet) ³ to:		
			Project Area	Solar Arrays	Nearest Inverter
U03-02	Northeast side of River Rd SE; northeast side of Unit 4	Limited	242.2	426.4	1,219.5
U03-03	North side of 105th St SE; south side of Unit 3	Limited	275.1	428.7	916.6
U03-04	North side of 105th St SE; south side of Unit 3	Moderate	256.2	409.0	807.5
U03-05	North side of 105th St SE; south side of Unit 3	Moderate	255.4	411.8	800.3
U03-06	North side of 105th St SE; south side of Unit 3	Moderate	166.8	327.7	882.3
U03-07	North side of 105th St SE; south side of Unit 3	Moderate	224.4	412.0	1,086.7
U03-08	Northwest side of 105th St SE; south side of Unit 3	Moderate	536.2	706.1	1,394.0
U03-09	East side of 106th St SE; southwest side of Unit 3	Moderate	760.2	862.0	1,467.3
U03-10	East side of 106th St SE; west side of Unit 3	Moderate	809.5	914.6	1,490.6
U03-11	Southeast side of State Highway 24 and northeast side of 106th St SE; west side of Unit 3	Moderate	794.2	902.8	1,425.6
U03-18	Northeast side of 106th St SE; southwest side of Unit 3	Dense	992.8	1,153.7	1,840.8
U03-19	North side of 106th St SE and west side of 105th St SE; southwest side of Unit 3	Moderate	886.4	1,071.3	1,748.4
U03-20	East side of 105th St SE; south side of Unit 3	Moderate	876.1	1,063.5	1,677.8
U03-21	East side of 105th St SE; south side of Unit 3	Moderate	658.2	847.4	1,483.0
U03-22	South side of 105th St SE; south side of Unit 3	Moderate	645.6	814.8	1,366.5
U03-23	South side of 105th St SE; south side of Unit 3	Moderate	617.8	776.9	1,212.5
U03-24	South side of 105th St SE; south side of Unit 3	Limited	648.0	804.4	1,188.5
U03-25	South side of 105th St SE and west side of 64th Ave SE; south side of Unit 3	Limited	712.9	866.8	1,246.8

Appendix E
Proximity of Residences to the Project

Residence ¹	Location	Existing Vegetative Screening ²	Distance (feet) ³ to:		
			Project Area	Solar Arrays	Nearest Inverter
U03-26	South side of 105th St SE and east side of 64th Ave SE; south side of Unit 3	Moderate	666.4	817.2	1,246.3
U03-27	East side of 64th St SE; south side of Unit 3	Limited	821.6	972.3	1,400.3
Units 5 - 7					
U05-01 Residence ⁴	South of CR 8, southeast of State Highway 24; southwest side of Unit 5	Dense	1,245.1	1,379.2	1,756.8
U05-01 Structures ⁴	South of CR 8, southeast of State Highway 24; southwest side of Unit 5	Moderate	133.8	252.8	729.4
U06-01	West side of 70th Ave SE; southwest side of Unit 6	Limited	172.5	348.3	671.1
U07-01	Northeast side of River Rd SE; south side of Unit 7 and north side of Unit 4	Limited	216.2	364.7	982.9
U07-02	Northeast side of River Rd SE; southwest side of Unit 7 and northeast side of Unit 3	Moderate	133.3	656.1	1,386.4
U07-03	Northeast side of River Rd SE; west side of Unit 7	Moderate	455.9	1,180.9	1,702.4
U07-04	Northeast side of River Rd SE; west side of Unit 7	Limited	702.2	1,448.6	1,940.9
U07-05	Northeast side of River Rd SE; south side of Unit 7 and north side of Unit 4	Moderate	525.3	670.8	1,263.5
Unit 8					
U08-01	South side of Highway 10; east side of Unit 8	Moderate	515.0	725.0	1,332.3
U08-02	North side of Highway 10 and southeast side of 95th Ave SE; northeast side of Unit 8	Moderate	624.0	849.3	1,535.7
U08-03	North side of Highway 10 and northwest side of 95th Ave SE; northeast side of Unit 8	Moderate	510.8	726.0	1,380.3
U08-04	West side of 90th Ave SE; southwest side of Unit 8	Moderate	524.0	701.3	1,382.6

Appendix E
Proximity of Residences to the Project

Residence ¹	Location	Existing Vegetative Screening ²	Distance (feet) ³ to:		
			Project Area	Solar Arrays	Nearest Inverter
Unit 9					
U09-01	East side of 100th Ave SE; west of Unit 9	Moderate	237.5	484.7	1,064.7
U09-02	North side of 87th St SE; north side of Unit 9	Moderate	149.5	335.1	1,066.3
U09-03	North side of 87th St SE; northeast side of Unit 9	Moderate	248.1	512.6	1,299.0
U09-04	North side of 87th St SE; north side of Unit 9	Moderate	429.3	609.4	1,242.1
U09-05	North side of 90th St SE; east side of Unit 9	Moderate	561.4	773.9	1,318.3
U09-06	South side of 90th St SE and west side of 115th Ave SE and 91st St SE; east side of Unit 9	Moderate	865.5	994.7	1,458.6
U09-07	Northwest side of 91st St SE; east side of Unit 9	Limited	727.7	867.1	1,290.6
U09-08	West side of 91st St SE; east side of Unit 9	Limited	707.7	852.4	1,296.3
U09-09	Southeast side of 91st St SE; southeast side of Unit 9	Limited	762.2	954.4	1,421.3
U09-10	East side of 91 St SE and west side of 115th Ave SE; east side of Unit 9	Limited	998.7	1,139.6	1,570.5
U09-11	West side of 115th Ave SE; southeast side of Unit 9	Limited	797.0	1,223.0	1,686.0
U09-12	West side of 115th Ave SE; southeast side of Unit 9	Limited	1,000.0	1,497.3	1,929.9
U09-13	West side of 100th Ave SE; southwest side of Unit 9	Moderate	939.4	1,206.4	1,853.8
U09-14	West side of 100th Ave SE; west side of Unit 9	Moderate	958.4	1,188.9	1,819.1
U09-15	West side of 100th Ave SE; west side of Unit 9	Moderate	800.2	1,021.0	1,645.4
U09-16	West side of 100th Ave SE; west side of Unit 9	Dense	605.1	806.5	1,421.7
U09-17	West side of 100th Ave SE; west side of Unit 9	Moderate	635.7	759.6	1,148.8

Appendix E
Proximity of Residences to the Project

Residence ¹	Location	Existing Vegetative Screening ²	Distance (feet) ³ to:		
			Project Area	Solar Arrays	Nearest Inverter
U09-18	South of 82nd St SE and east side of 95th Ave SE; northwest side of Unit 9	Moderate	977.2	1,144.5	1,649.3
<p>¹ U01 corresponds to residences within or adjacent to Unit 1, U02 corresponds to residences within or adjacent to Unit 2, and so on for Units 3, 5, 6, 7 8, and 9.</p> <p>² Limited screening represents no existing trees or scattered trees that do not create a visual obstruction of vegetation; moderate screening represents existing trees on at least one side of the residence that are one tree line in density; dense screening represents multiple tree lines and a dense visual obstruction.</p> <p>³ Based on preliminary design.</p> <p>⁴ While the U05-01 residence is >1,000 feet from the boundary of Unit 5, the associated structures were included to account for the potential use of the open areas near the structures for family/social gatherings. The structures are adjacent to the west edge of Unit 5.</p>					