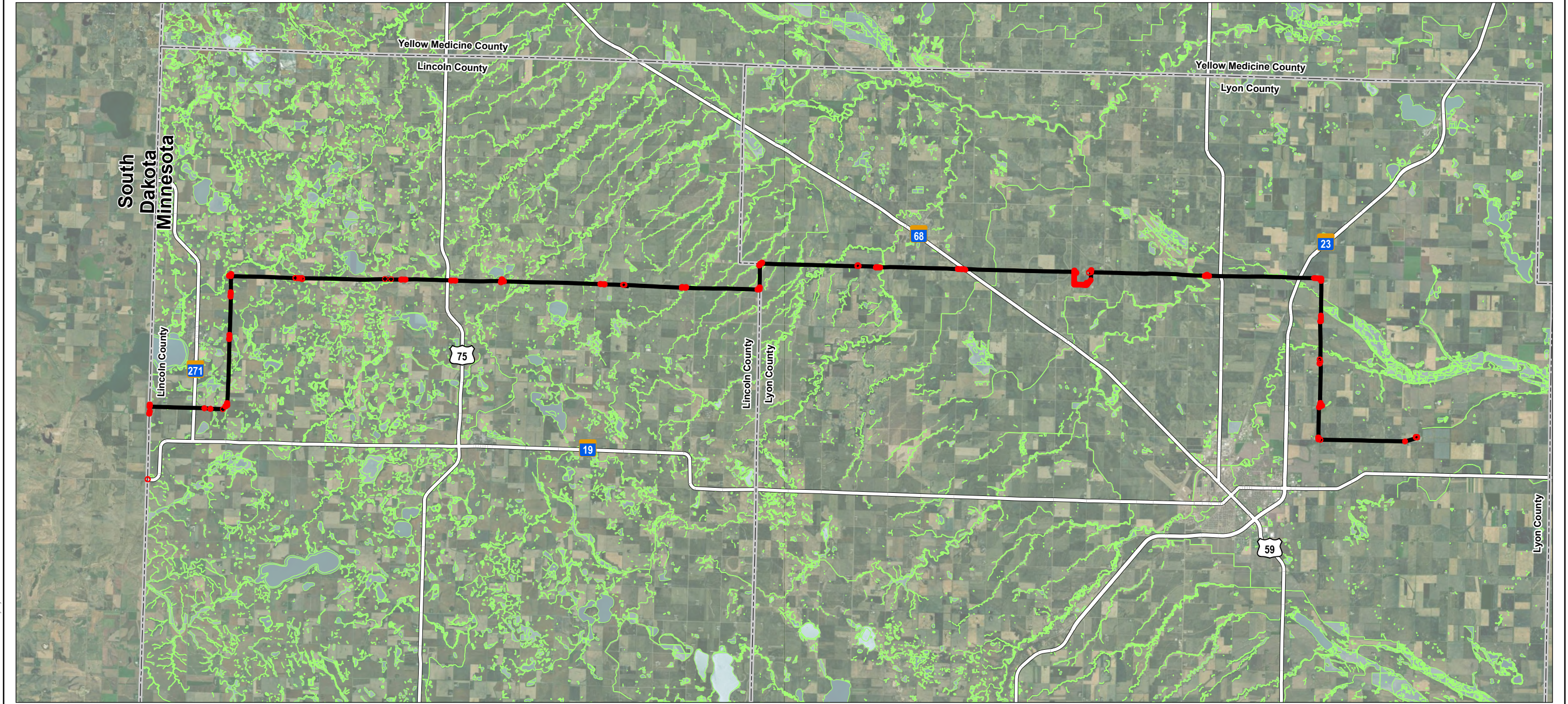
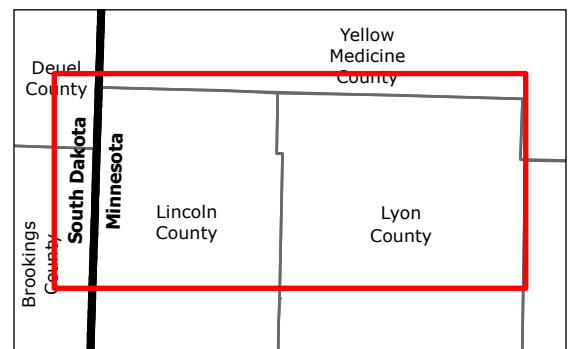


Figures - Part 5

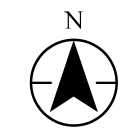
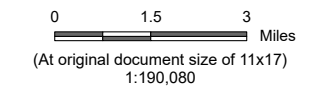
Includes Figure 15



V:\2277\active\227705875\03_data\gis_data\proj\minor_alteration\minor_alteration.aprx Revised: 2023-11-02 By: kjmueller



- Legend**
- Project Study Area
 - Temporary Workspace
 - Major Highway
 - County Boundary
 - National Wetlands Inventory

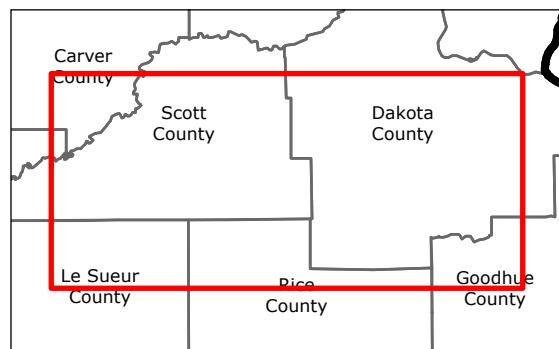
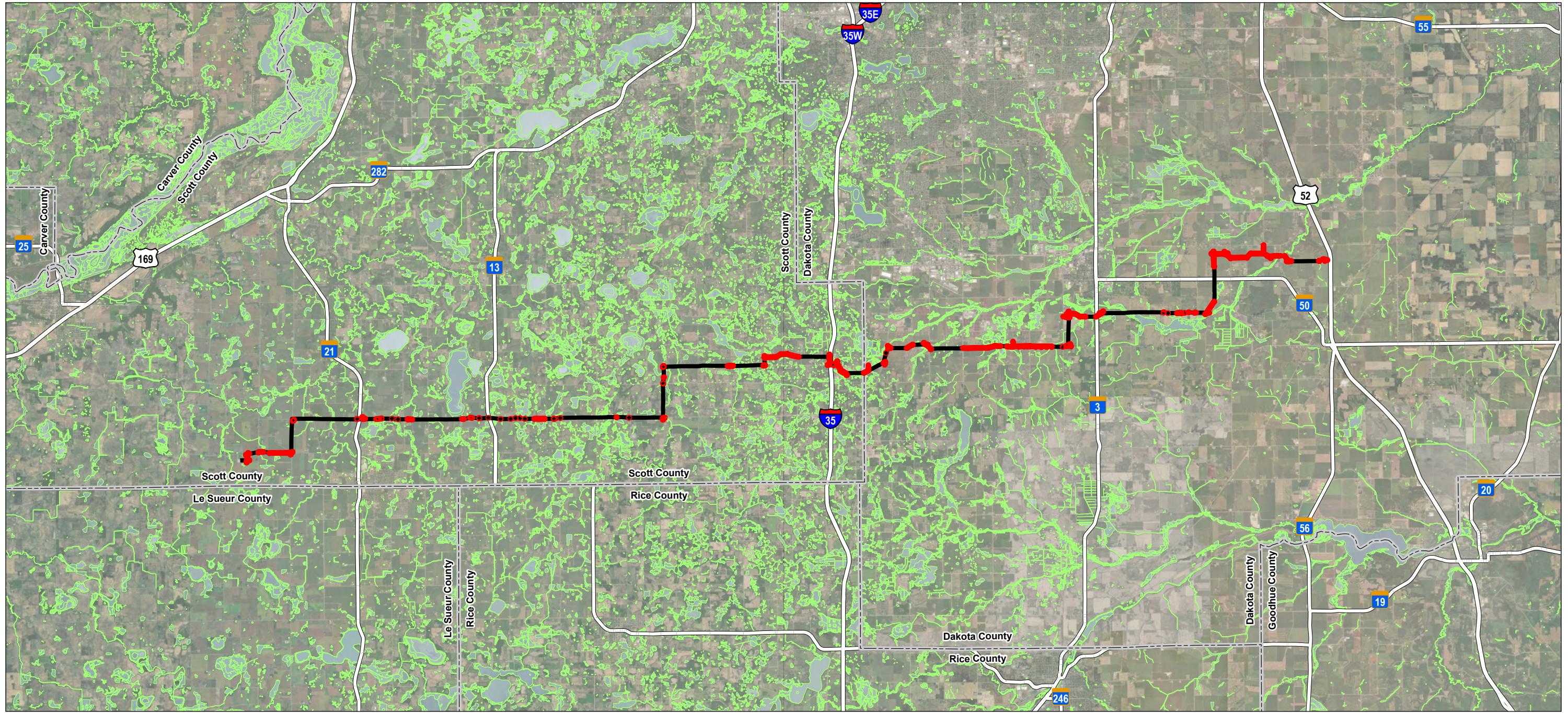


Project Location Lincoln Co., MN to Lyon Co., MN
 Scott Co. to Dakota Co., MN
 Prepared by KJM on 2023-11-02

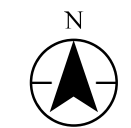
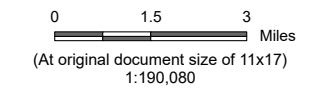
Client/Project Xcel Energy
 Brookings Co. to Lyon Co. & Helena to Hampton
 Minor Alteration
 227705875

Figure No. **15a**

Title **Wetlands - Brookings Co. to Lyon Co.**



- Legend**
- Project Study Area
 - Temporary Workspace
 - Major Highway
 - County Boundary
 - National Wetlands Inventory



Project Location Prepared by KJM on 2023-11-02
 Lincoln Co., MN to Lyon Co., MN
 Scott Co. to Dakota Co., MN

Client/Project 227705875
 Xcel Energy
 Brookings Co. to Lyon Co. & Helena to Hampton
 Minor Alteration

Figure No.
15b

Title
Wetlands - Helena to Hampton

- Notes**
1. Coordinate System: NAD 1983 StatePlane Minnesota South FIPS 2203 Feet
 2. Data Sources: Stantec, Xcel, MNDOT, MNDNR
 3. Background: ESRI World Imagery

V:\2277\active\227705875\03_data\gis\proj\minor_alteration\minor_alteration.aprx Revised: 2023-11-02 By: kjmueller