

APPENDIX A

Applicant's Notice Letter to Commission of Intent to Use
Alternative Permitting Process



30 west superior street / duluth, minnesota 55802-2093 / fax: 218-723-3955 /www.allete.com

David R. Moeller
Senior Attorney
218-723-3963
dmoeller@allete.com

October 10, 2012

VIA ELECTRONIC FILING

Dr. Burl W. Haar
Executive Secretary
Minnesota Public Utilities Commission
121 Seventh Place East, Suite 350
St. Paul, MN 55101

Re: Notification of Intent to File Route Permit Application Under the Alternative Permitting Process for the Proposed Minnesota Power 39 Line Project – St. Louis County, Minnesota

Dear Dr. Haar:

In accordance with Minn. Rules 7850.2800, subp. 2, Minnesota Power hereby notifies the Minnesota Public Utilities Commission (MPUC) of its intent to submit an application for a route permit for the 39 Line Project (Project) pursuant to the alternative permitting procedures in Minn. Rules 7850.2800 to 7850.3900.


The proposed Project includes constructing a new, approximately 2.8-mile-long, 115 kilovolt (kV) high voltage transmission line from Minnesota Power's existing 39 Line in the City of Eveleth to Minnesota Power's existing 37 Line northwest of the City of Leonidas. Minnesota Power would also, at the request of United Taconite, remove its existing 39 Line that runs through United Taconite's north pit. The Project is needed to allow the existing line to be removed without degrading the area's high voltage transmission system.

Minnesota Power plans to file the application by October 30, 2012 and will work with the MPUC and Department of Commerce staff to address any questions and/or comments in order to expedite the application's acceptance and completion of the environmental assessment.



If you have any questions or concerns please contact myself or Dan McCartney at (218) 355-3515 or by email at dmccourtney@allete.com.

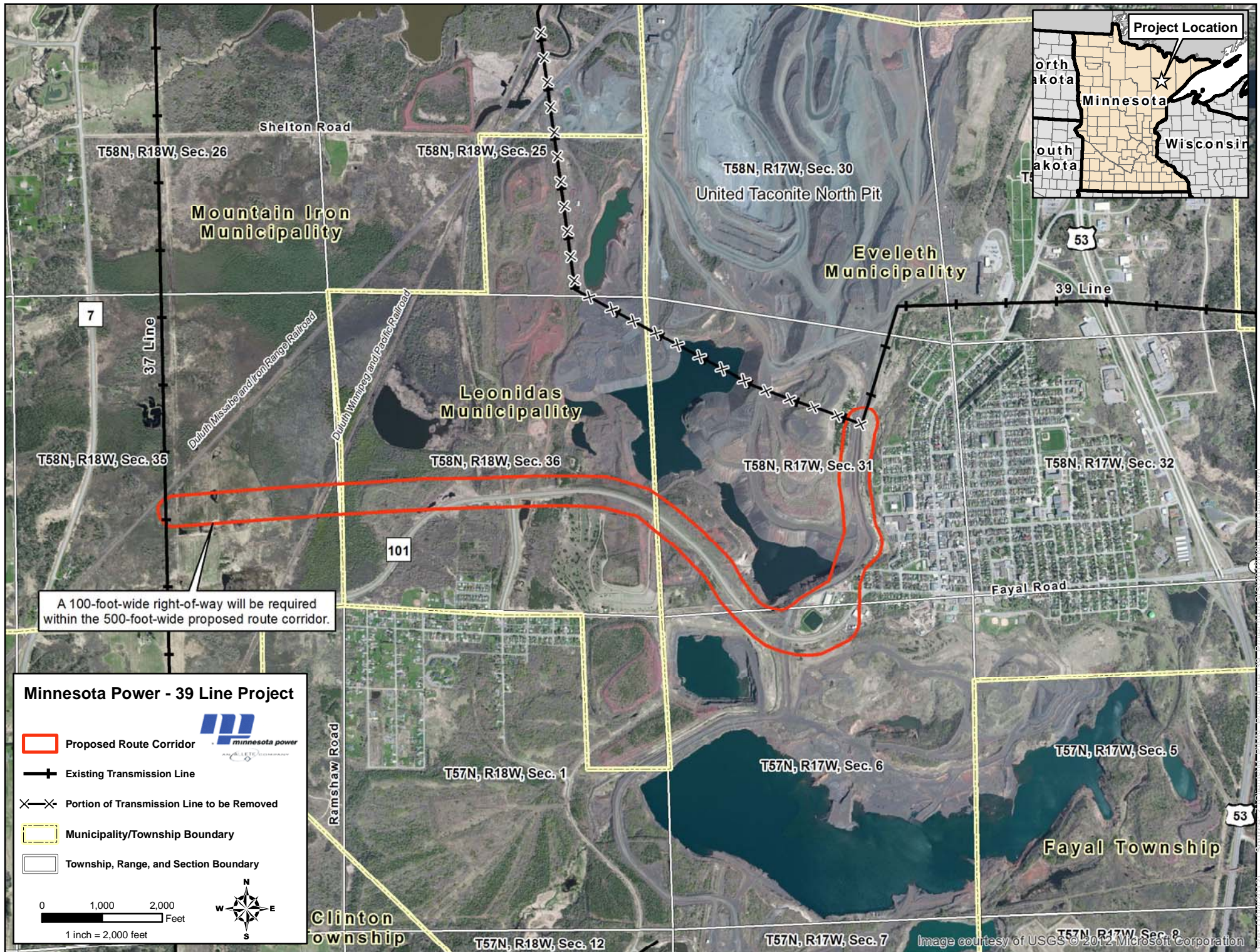
Yours truly,

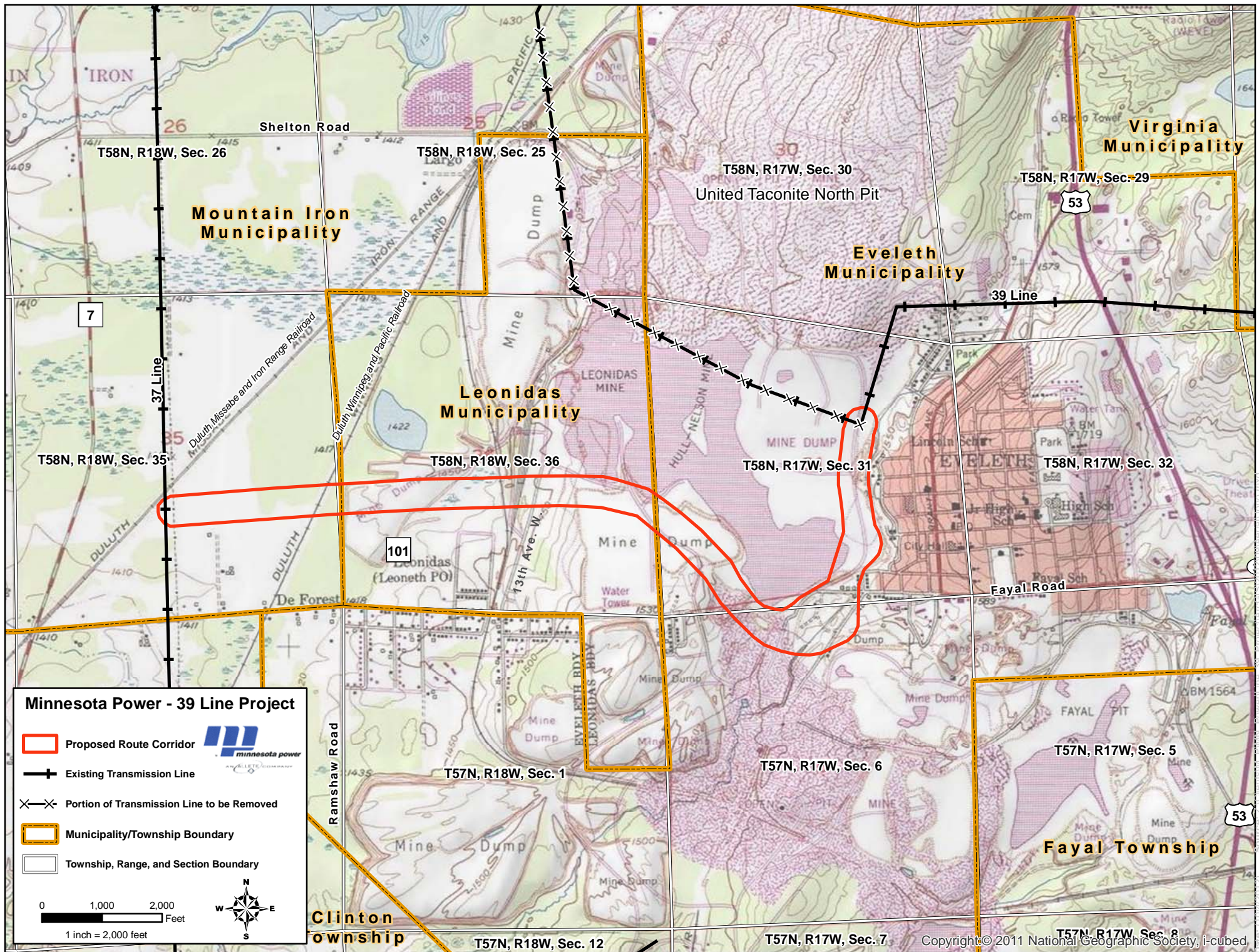
A handwritten signature in black ink that reads "David R. Moeller". The signature is written in a cursive, flowing style.

David R. Moeller

kl

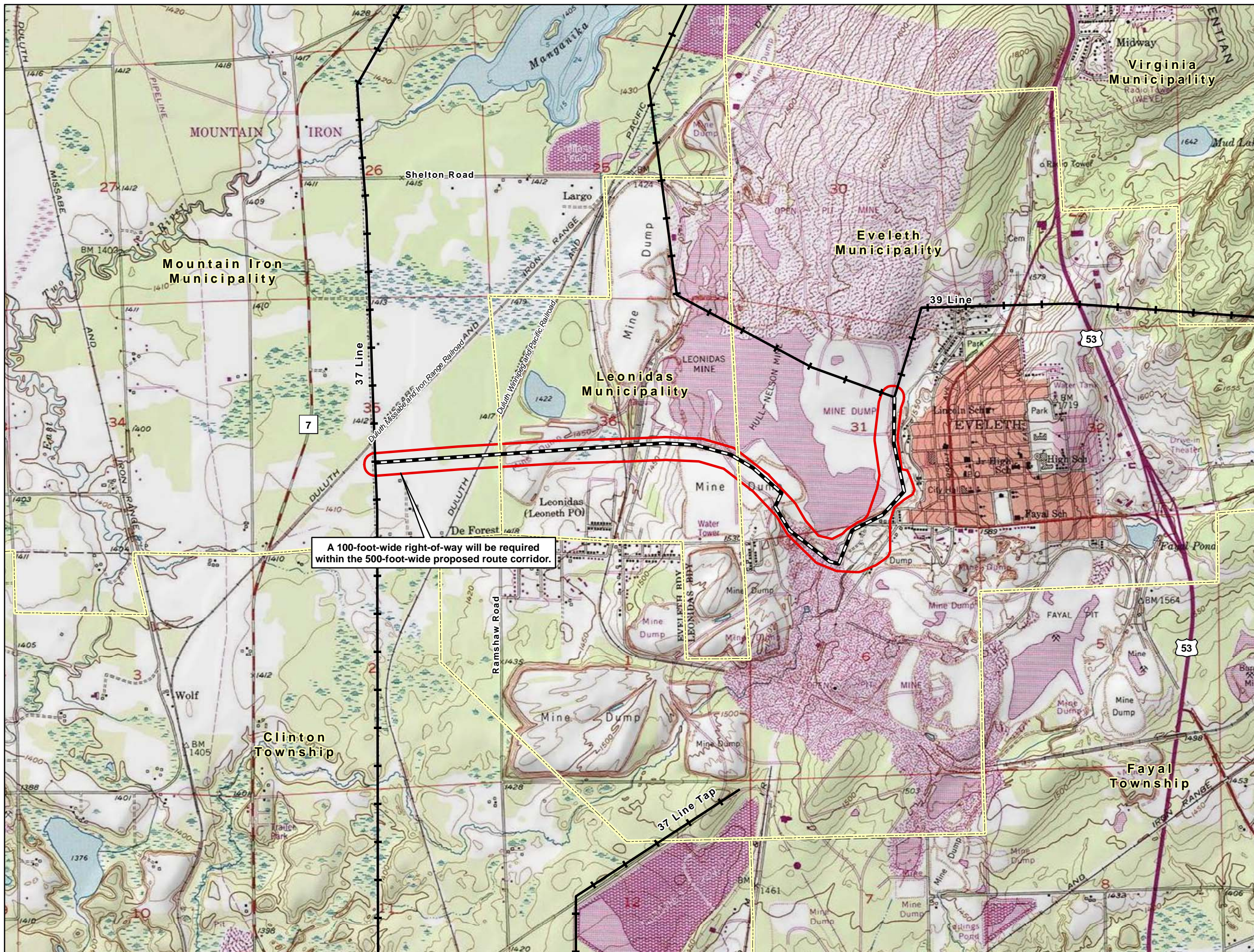
Attachment USGS topographic map and aerial photo-based map of Project area
c: Dan McCartney



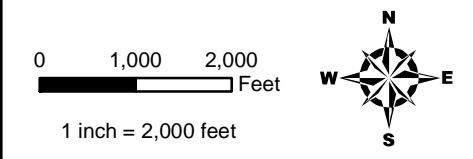


APPENDIX B

Route Maps



A 100-foot-wide right-of-way will be required within the 500-foot-wide proposed route corridor.






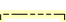
-  Proposed Alignment
-  Existing Transmission Line
-  Proposed Route Corridor
-  Municipality/Township Boundary

Figure B-1
Minnesota Power
39 Line Project
St. Louis County, Minnesota

PROJECT LOCATION
 MAP - TOPOGRAPHIC



Source: MN Power
 FSA - NAIP 2010 Aerial

Date: (1/17/2012) Source: Z:\Clients\W_P\MM_PowerLine_39_Project\ArcSDE\S2012\08\FDC_Figures\Overview_Topoc.mxd

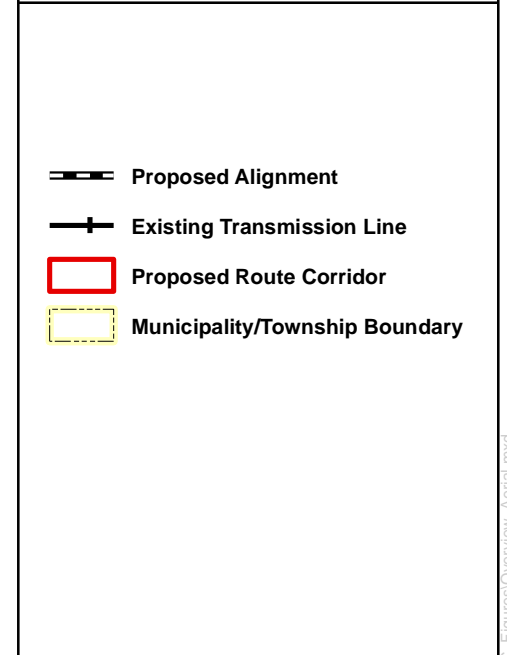
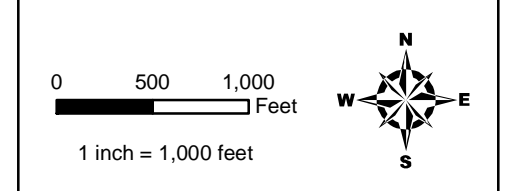
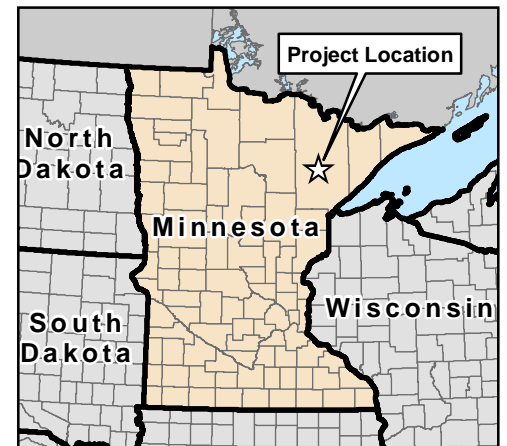


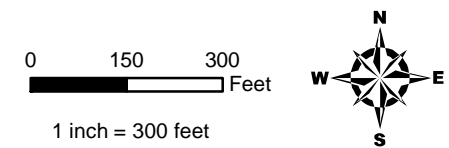
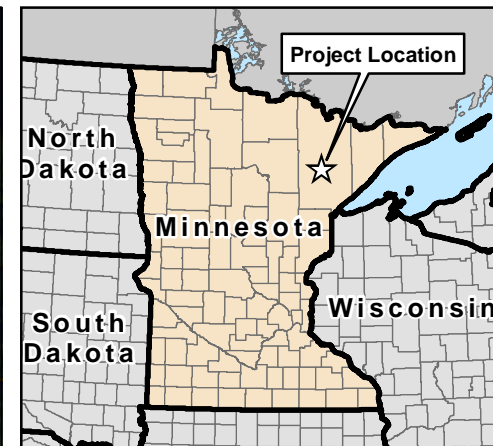
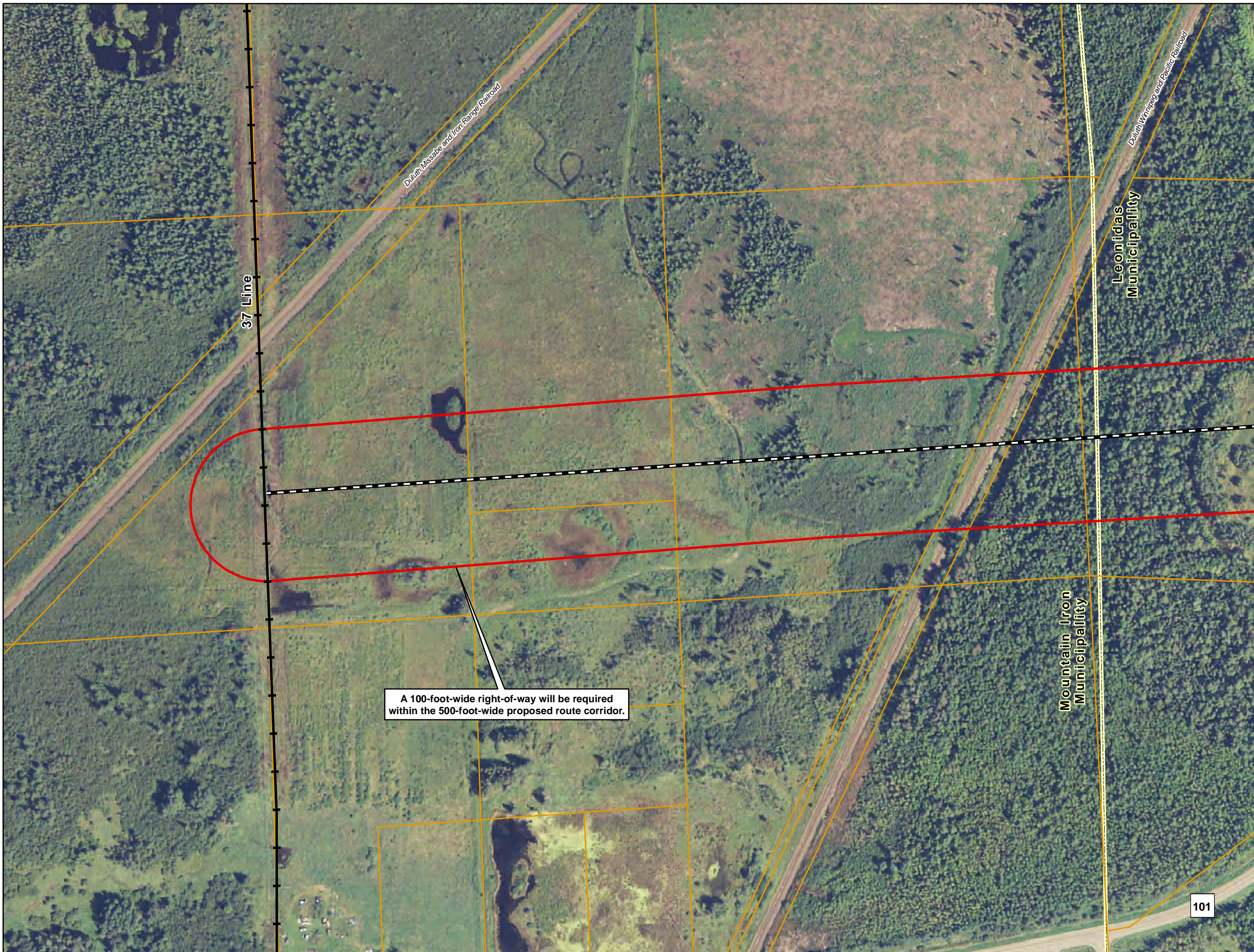
Figure B-2
Minnesota Power
39 Line Project
St. Louis County, Minnesota

PROJECT LOCATION
 MAP - AERIAL



Source: MN Power
 FSA - NAIP 2010 Aerial

Date: (1/12/2012) Source: Z:\Clients\MN_Power\Line_39_Project\ArcGIS\2012\08\FDC_Figures\Overview_Aerial.mxd



- Proposed Centerline
- Existing Transmission Line
- Proposed Route Corridor
- Parcel Boundary
- Municipality/Township Boundary

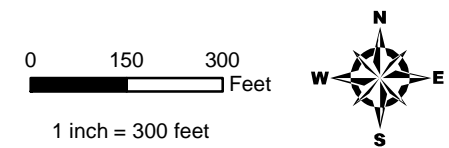
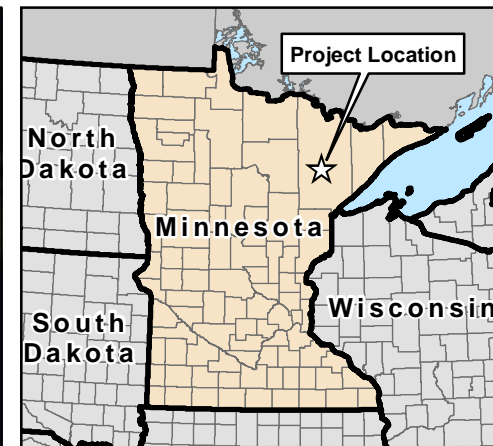
Figure B-3
Minnesota Power
 39 Line Project
 St. Louis County, Minnesota

PROJECT LOCATION
 MAP - AERIAL



Source: MN Power
 FSA - NAIP 2010 Aerial

Date: (1/12/2012) Source: Z:\Clients\MN\Power\Line_39_Project\ArcGIS\2012\08\FDC_Figures\Zoom_in_Maps.mxd

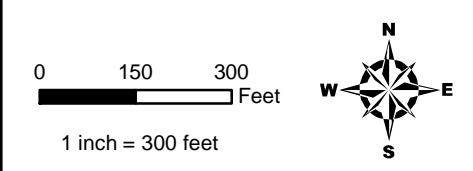
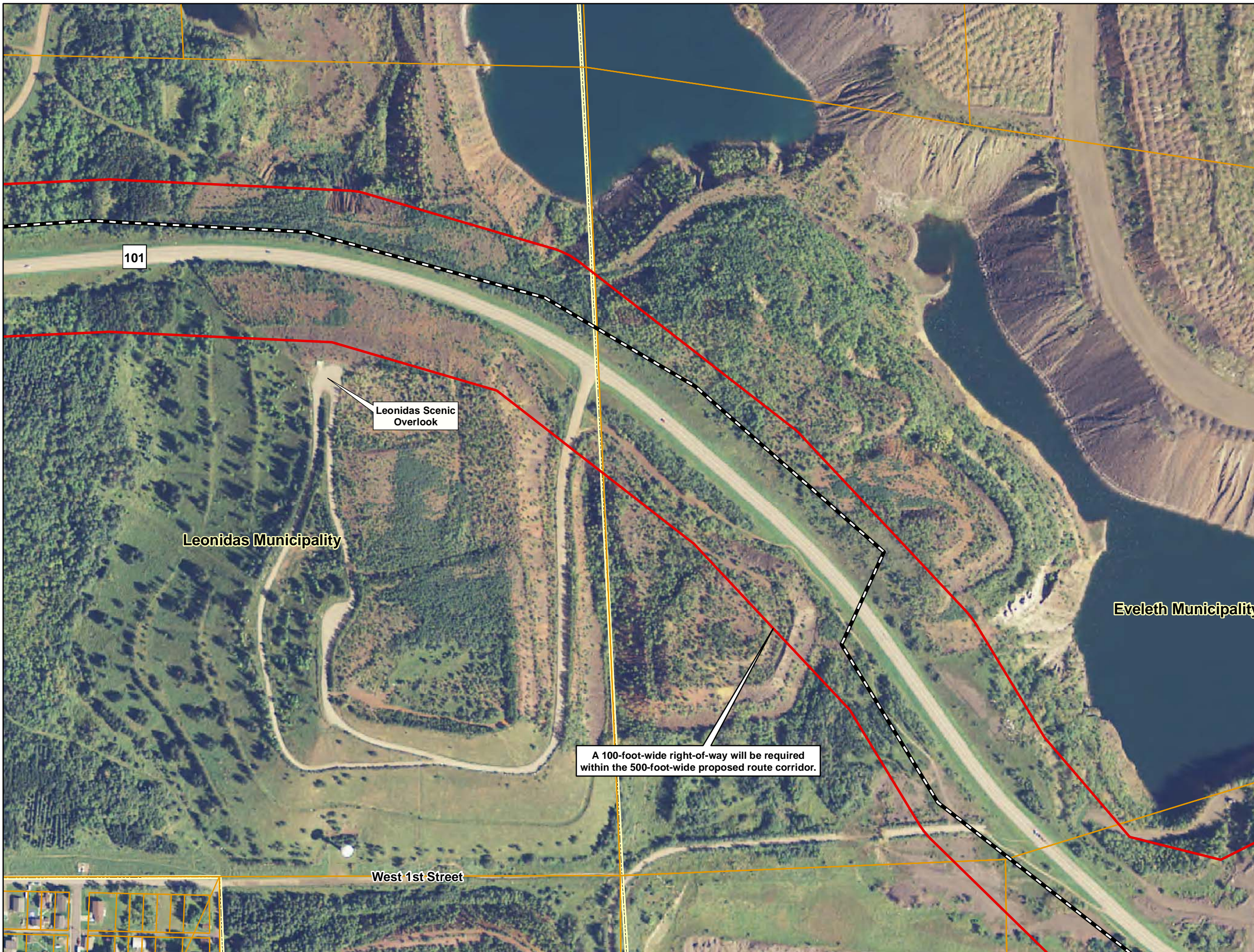


- Proposed Centerline
- Existing Transmission Line
- Proposed Route Corridor
- Parcel Boundary
- Municipality/Township Boundary

Figure B-4
Minnesota Power
 39 Line Project
 St. Louis County, Minnesota

PROJECT LOCATION
 MAP - AERIAL









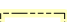
-  Proposed Centerline
-  Existing Transmission Line
-  Proposed Route Corridor
-  Parcel Boundary
-  Municipality/Township Boundary

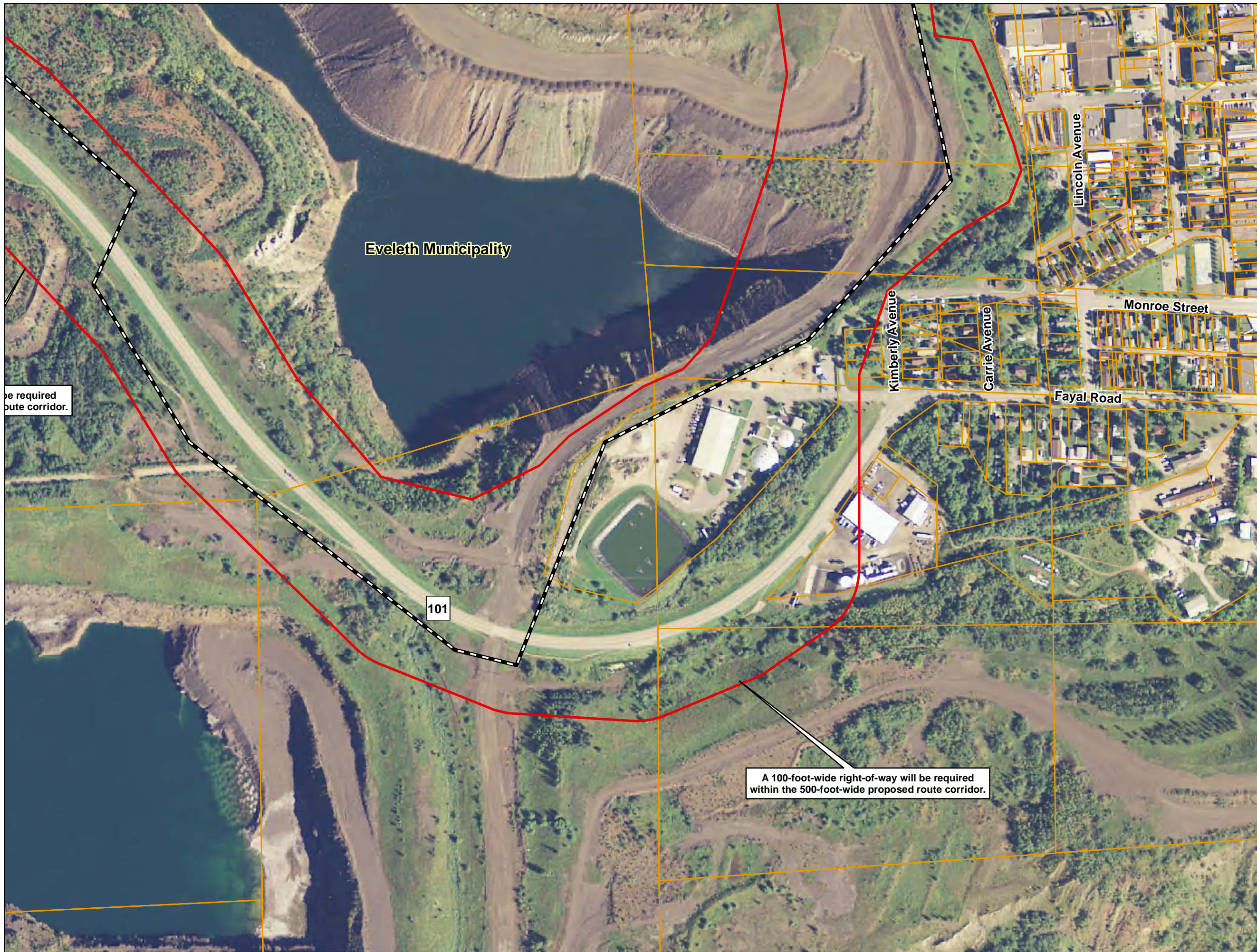
Figure B-5
Minnesota Power
 39 Line Project
 St. Louis County, Minnesota

PROJECT LOCATION
 MAP - AERIAL



Source: MN Power
 FSA - NAIP 2010 Aerial

Date: (1/12/2012) Source: Z:\Clients\MN\PowerLine_39_Project\ArcGIS\2012\08\FDC_Figures\Zoom_in_Map.mxd



be required
oute corridor.

Eveleth Municipality

101

A 100-foot-wide right-of-way will be required
within the 500-foot-wide proposed route corridor.

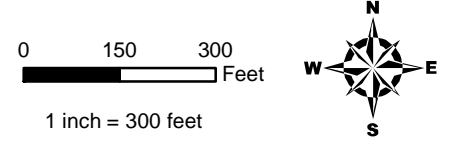
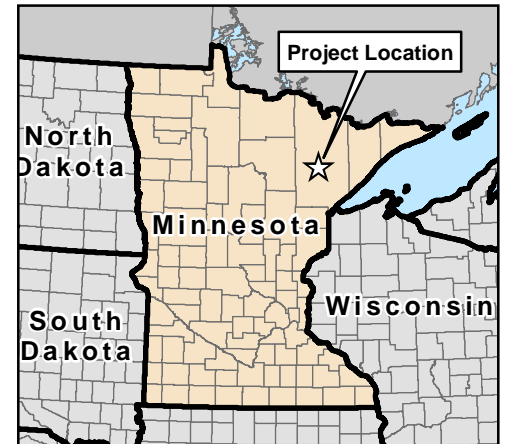
Lincoln Avenue

Kimberly Avenue

Carrie Avenue

Monroe Street

Fayal Road



- Proposed Centerline
- Existing Transmission Line
- Proposed Route Corridor
- Parcel Boundary
- Municipality/Township Boundary

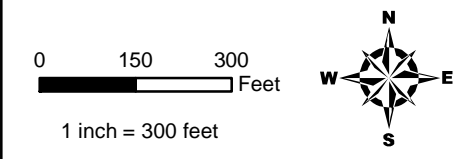
Figure B-6
Minnesota Power
39 Line Project
St. Louis County, Minnesota

PROJECT LOCATION
MAP - AERIAL



Source: MN Power
FSA - NAIP 2010 Aerial

Date: (1/17/2012) Source: Z:\Clients\MN\Power\Line_39_Project\ArcGIS\2012\08\FDC_Figures\Zoom_in_Maps.mxd



- Proposed Centerline
- Existing Transmission Line
- Proposed Route Corridor
- Parcel Boundary
- Municipality/Township Boundary

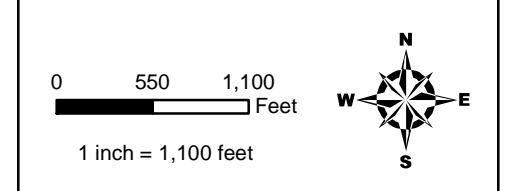
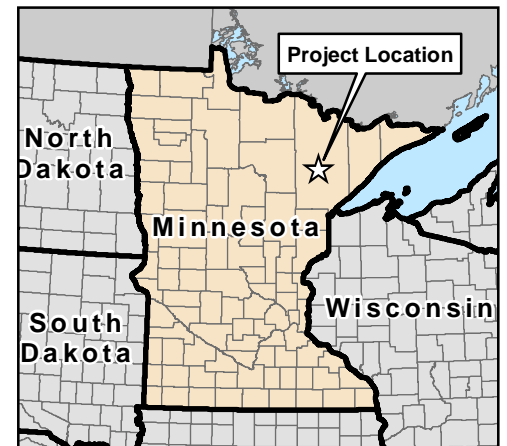
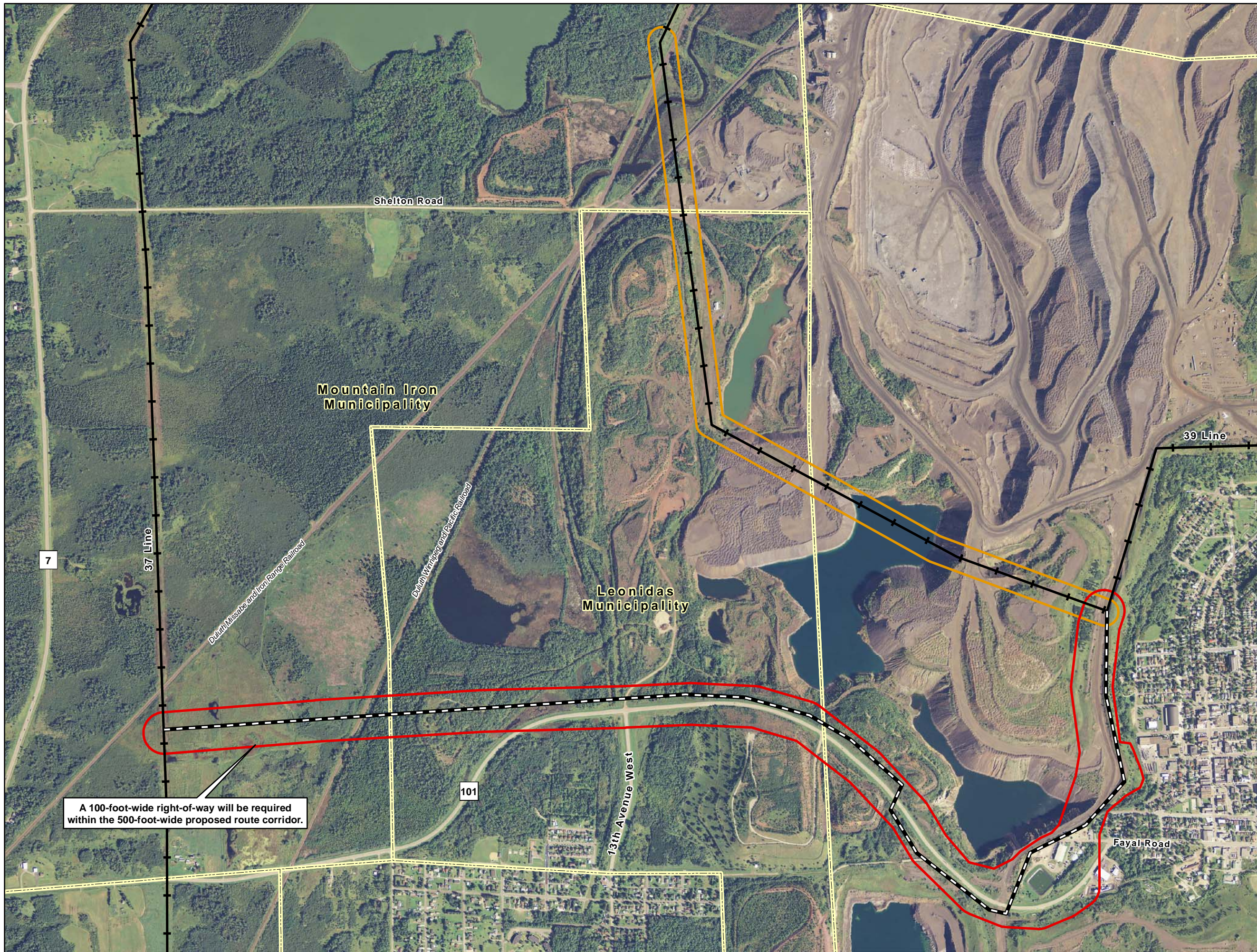
Figure B-7
Minnesota Power
 39 Line Project
 St. Louis County, Minnesota

PROJECT LOCATION
 MAP - AERIAL



Source: MN Power
 FSA - NAIP 2010 Aerial

Date: (1/12/2012) Source: Z:\Clients\MN\Power\Line_39_Project\ArcGIS\2012\08\Figures\Zoom_in_Map.mxd



- Proposed Alignment
- Existing Transmission Line
- Proposed Route Corridor
- Portion to be Removed
- Municipality/Township Boundary

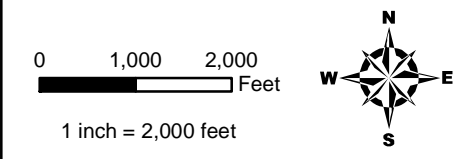
Figure B-8
Minnesota Power
39 Line Project
St. Louis County, Minnesota

EXISTING TRANSMISSION
 LINE TO BE REMOVED
 PROJECT LOCATION
 MAP - AERIAL



Source: MN Power
 FSA - NAIP 2010 Aerial

Source: Z:\Clients\MN\Power\Line_39_Project\ArcGIS\2012\08\POC_Figures\Overview_Aerial_Portion_Removed.mxd
 Date: 1/12/2012



- Proposed Alignment
- Existing Transmission Line
- Alternative Route Corridor
- Municipality/Township Boundary
- Proposed Route Corridor

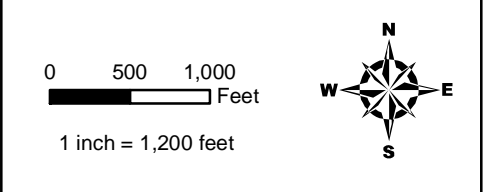
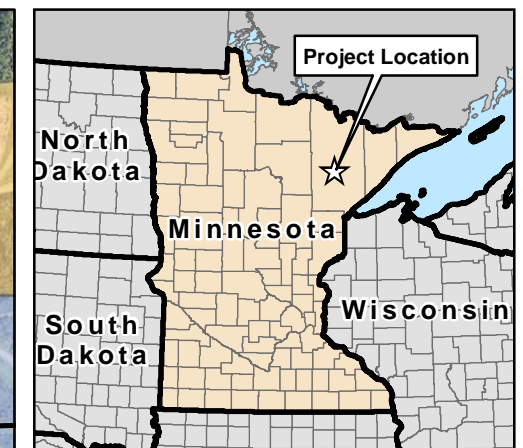
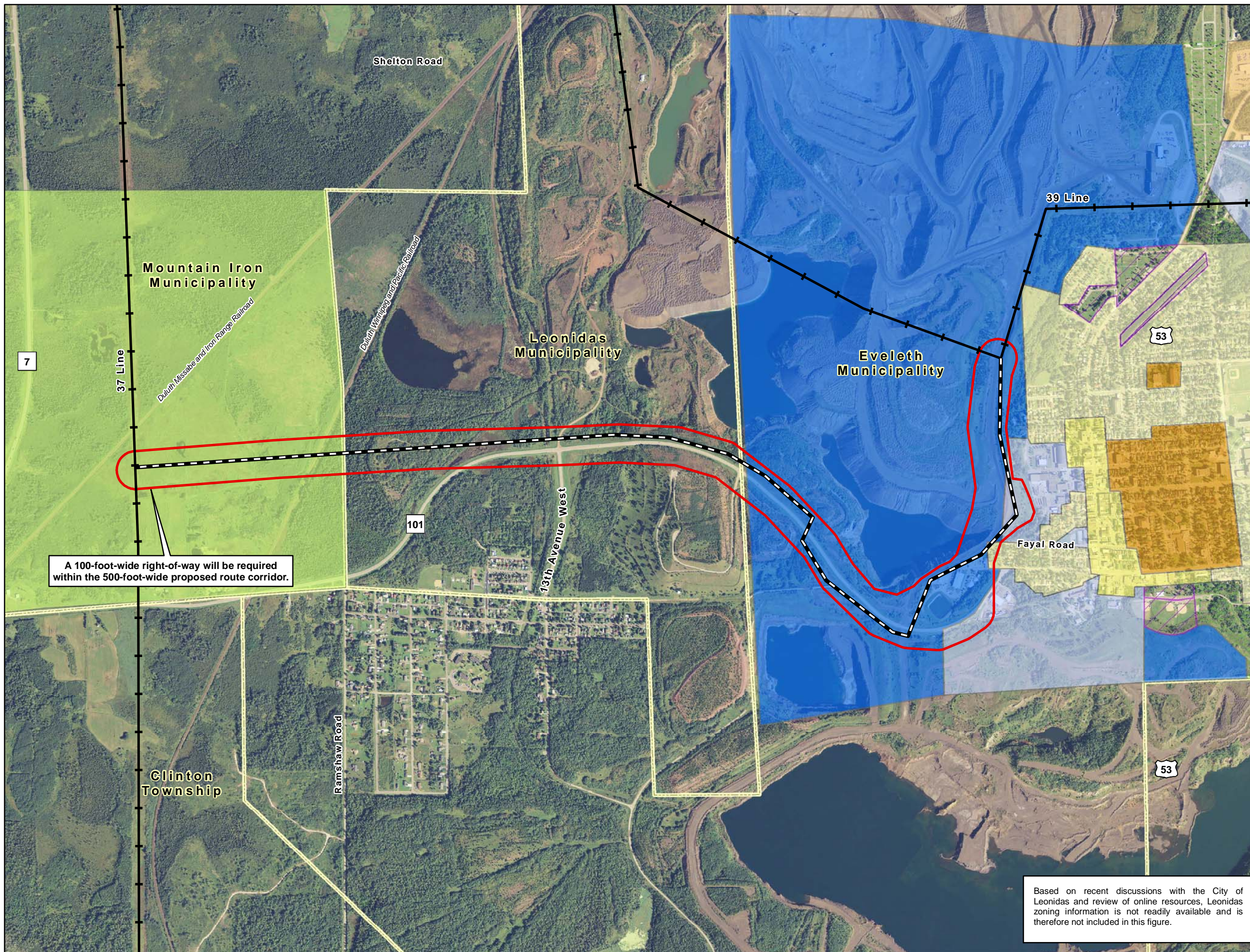
Figure B-9
Minnesota Power
39 Line Project
St. Louis County, Minnesota

ALTERNATIVE ROUTE
 CONSIDERED BUT
 REJECTED PROJECT
 LOCATION MAP - AERIAL



Source: MN Power
 FSA - NAIP 2010 Aerial

Date: (1/12/2012) Source: Z:\Clients\MN\Power\Line_39_Project\ArcGIS\2012\08\FDC_Figures\Overview_Aerial_Alternative.mxd



- Proposed Alignment
 - Existing Transmission Line
 - Proposed Route Corridor
 - Municipality/Township Boundary
- Zoning**
- Commercial Activities - Downtown
 - Commercial Activities - Highway 53
 - Light Industrial
 - Mining Activity
 - Manufacturing
 - Natural, Undeveloped Areas
 - Parks and Recreational Activities
 - Residential
 - Residential - Rural
 - Residential - Multifamily

A 100-foot-wide right-of-way will be required within the 500-foot-wide proposed route corridor.

Based on recent discussions with the City of Leonidas and review of online resources, Leonidas zoning information is not readily available and is therefore not included in this figure.

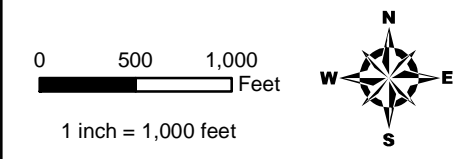
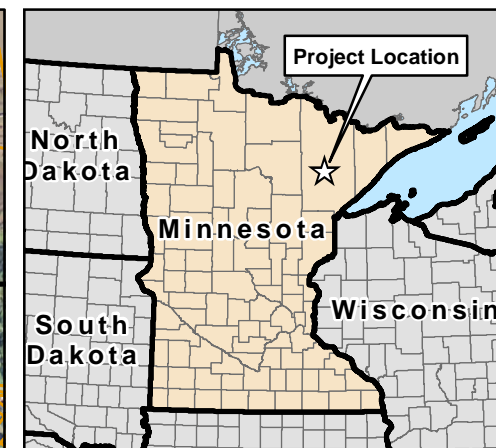
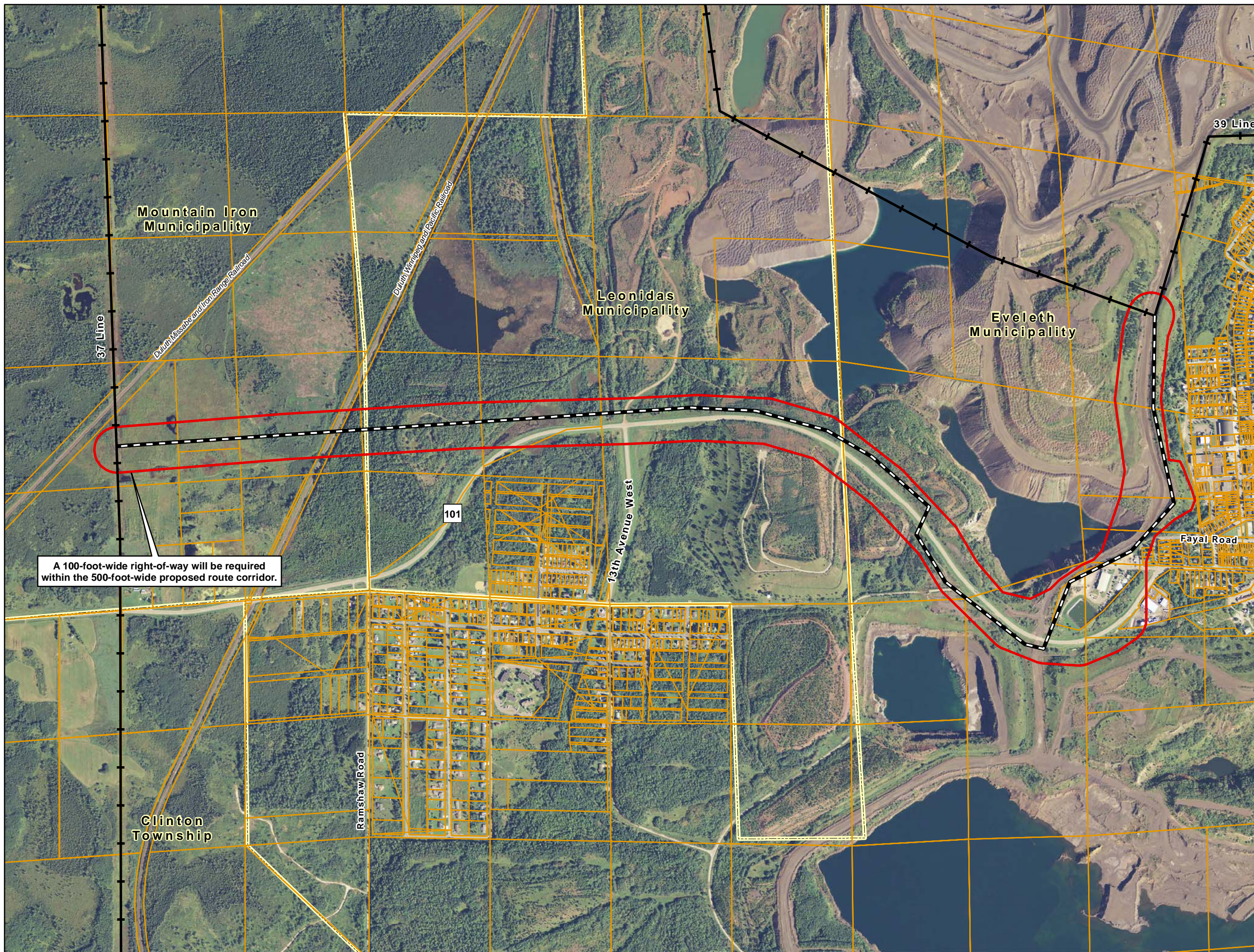
Figure B-10
Minnesota Power
39 Line Project
St. Louis County, Minnesota

ZONING MAP



Source: MN Power
 City of Eveleth
 FSA - NAIP 2010 Aerial

Date: (1/12/2012) Source: Z:\Clients\MN_Power\PowerLine_39_Project\ArcGIS\2012\08\FUC_Figures\Overview_Zoning.mxd



- Proposed Alignment
- Existing Transmission Line
- Proposed Route Corridor
- Parcel Boundary
- Municipality/Township Boundary

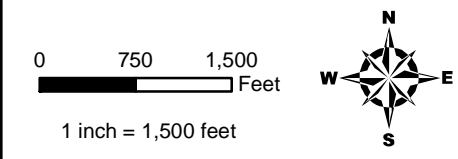
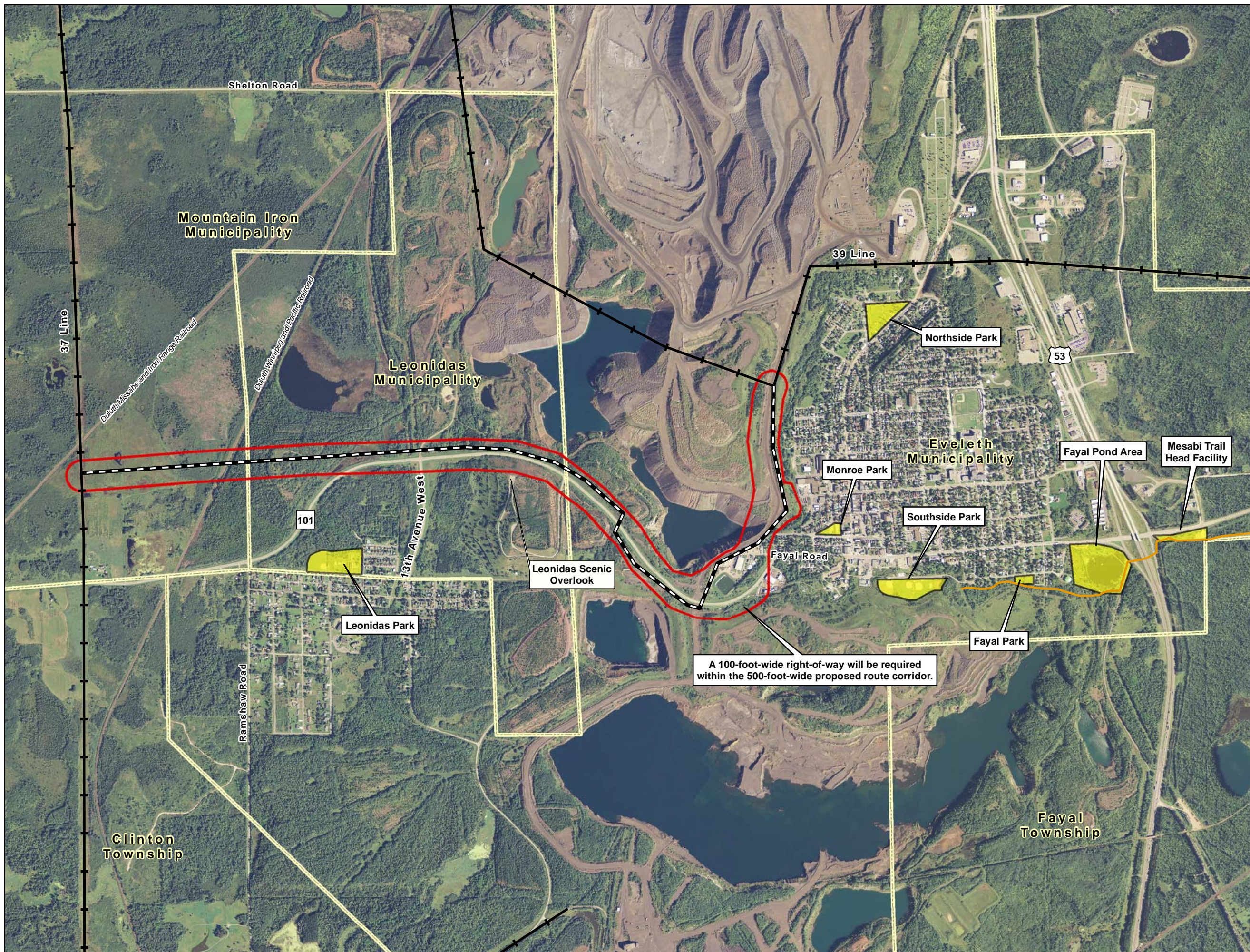
Figure B-11
Minnesota Power
39 Line Project
St. Louis County, Minnesota

PARCEL MAP



Source: MN Power
 St. Louis County, MN GIS
 FSA - NAIP 2010 Aerial

Date: (1/12/2012) Source: Z:\Clients\MN_Power\Line_39_Project\ArcGIS\2012\08\FDC_Figures\Overview_Parcels.mxd



- Proposed Alignment
- Existing Transmission Line
- Proposed Route Corridor
- Mesabi Trail
- Local Park and Recreation Area
- Municipality/Township Boundary

Figure B-12
Minnesota Power
39 Line Project
St. Louis County, Minnesota

PARKS AND RECREATION MAP



Source: FSA - NAIP 2010 Aerial

Date: (1/12/2012) Source: Z:\Clients\MC_P\MM_PowerLine_39_Project\ArcGIS\2012\08\FDC_Figures\Overview_Parks_Rec.mxd