

Data Source(s): Westwood (2017); Minnesota NAIP Imagery (Accessed 2017); ESRI (2012); USGS NHD Dataset (2013); MNDNR (Various Dates); BWSR (2010); Census Bureau (2015); Ventyx Velocity Suite; Ventyx Energy LLC. (2017). Data and map are approximate.

**NOBLES 2 POWER PARTNERS, LLC**  
 Westwood  
 Multi-Disciplined  
 Surveying & Engineering

- Legend**
- Project Boundary
  - Proposed O&M
  - Proposed Access Road
  - Existing Substation (Location Approximate)
  - County Boundary
  - Proposed Substation
  - Proposed Access Road Alternate
  - Existing Transmission Line (Location Approximate)
  - PLS Township Boundary
  - Proposed Turbine
  - Road
  - Proposed Collection
  - Municipal Boundary
  - Proposed Collection Alternate
  - PLS Section Boundary
  - Proposed Turbine Alternate
  - NHD Flowline
  - Participating Leased Land
  - Temporary Met Tower
  - NHD Waterbody
  - Potential Participating Land\*\*
  - Proposed Crane Path

**Note:** Project up to 260MW.

N  
0 1.1 Miles

\*\* Potential Participating Land consists of land that is the subject of ongoing landowner lease negotiations. Nobles 2 will update the map when owners of Potential Participating Land sign lease agreements and the land becomes Participating Land.

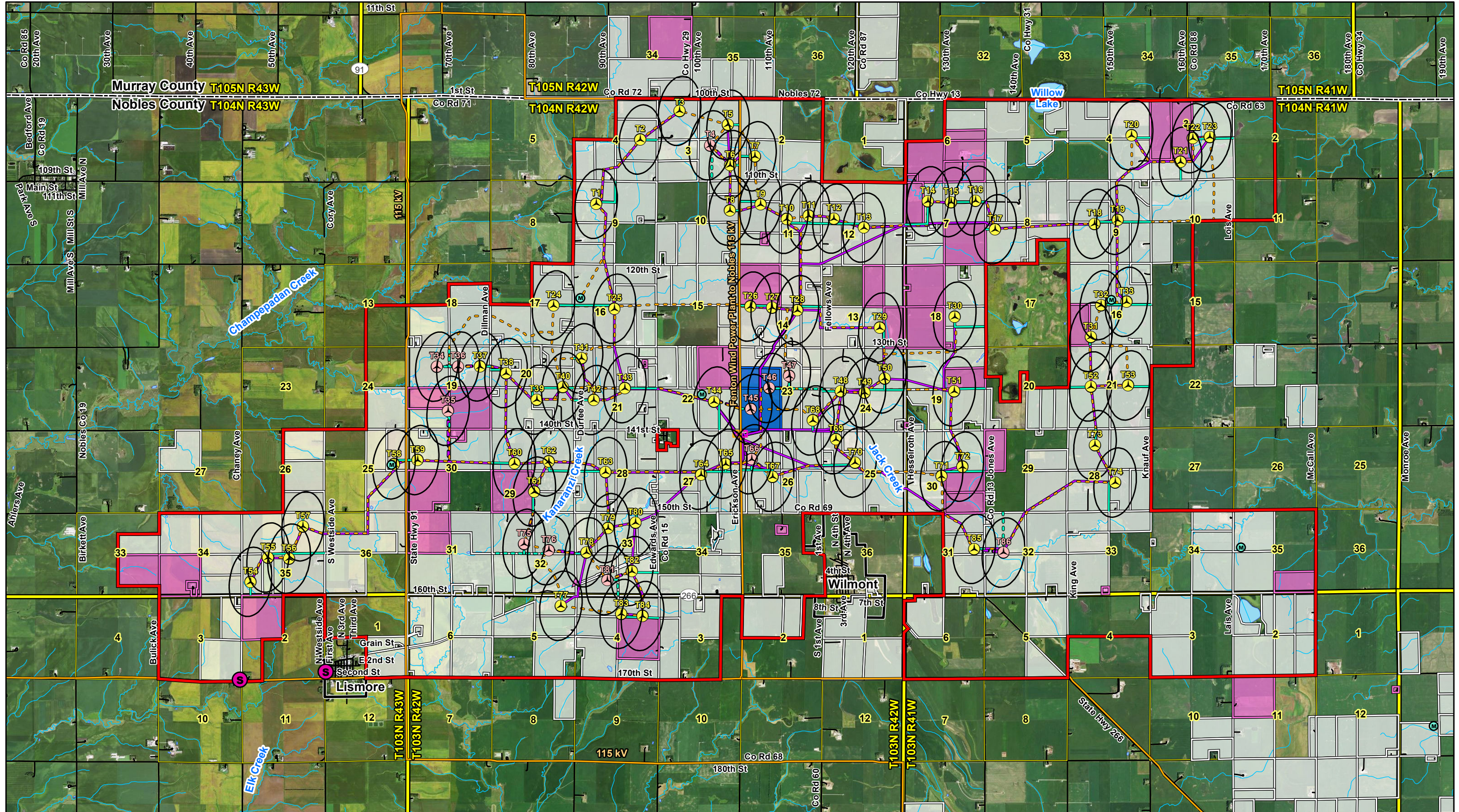
# Nobles 2 Wind Project

Nobles County, Minnesota

## Project Area and Participating Land

Revised December 27, 2017 - Map 2a

Map Document: N:\000\1661\00GIS\SitePermit\Exhibit\Map2a\_171227.mxd, 12/27/2017 12:45:36 PM



Data Source(s): Westwood (2017); Minnesota NAIIP Imagery (Accessed 2017); ESRI (2012); USGS NHD Dataset (2013); MNDNR (Various Dates); BWSR (2010); Census Bureau (2015); Ventyx Velocity Suite; Ventyx Energy LLC. (2017). Data and map are approximate.

**NOBLES 2 POWER PARTNERS, LLC**  
 Westwood  
 Multi-Disciplined  
 Surveying & Engineering

**Legend**

- Project Boundary
- County Boundary
- ⚡ Proposed Turbine
- ⚡ Proposed Turbine Alternate
- ⚡ Temporary Met Tower
- Proposed O&M
- Proposed Substation
- Wind Access Buffer
- Road
- Municipal Boundary
- Proposed Access Road
- Proposed Access Road Alternate
- Proposed Collection
- - - Proposed Collection Alternate
- Proposed Crane Path
- Existing Substation (Location Approximate)
- Existing Transmission Line (Location Approximate)
- NHD Flowline
- NHD Waterbody
- PLS Township Boundary
- PLS Section Boundary
- Participating Leased Land
- Participating Wind Rights Land
- Potential Participating Land\*\*

Note: Project up to 260MW.



\*\* Potential Participating Land consists of land that is the subject of ongoing landowner lease negotiations. Nobles 2 will update the map when owners of Potential Participating Land sign lease agreements and the land becomes Participating Land.

# Nobles 2 Wind Project

Nobles County, Minnesota

## Participating Land and Wind Access Buffer

Revised December 27, 2017 - Map 2b