

Thomas Burns
651.621.8322 – Direct
651.621.8323 – Facsimile
tgburns@otcpas.com



Depend on **Our People**. Count on **Our Advice**.SM

November 20, 2018

Daniel P. Wolf
Executive Secretary
Minnesota Public Utilities Commission
121 Seventh Place E, Suite 350
St. Paul, MN 55101-2147

Re: An Update in Matter of Farmers Mutual Telephone Company's Status as an Eligible
Telecommunications Carrier (ETC)
Docket No: P522/AM-18-718

Dear Mr. Wolf:

Enclosed via eFiling please find a letter which provides an update on the Farmers Mutual Telephone Company's status as an Eligible Telecommunications Carrier.

Sincerely,

/s/ Thomas G. Burns

Thomas G. Burns
Consultant on behalf of Farmers Mutual Telephone Company



Farmers Mutual Telephone Company
301 2nd St. South, Bellingham, MN 56212

Kevin Beyer
General Manager
320.324.2800
Kevin.Beyer@aciracoop.net

November 20, 2018

Minnesota Public Utilities Commission
121 7th Place E
Suite 350
Saint Paul, Minnesota 55101

Dear Commissioners:

This letter is to inform the Commission that Farmers Mutual Telephone Company (“Farmers”) won the FCC Connect America Fund II reverse auction for certain census blocks, and will receive universal service high cost support to build facilities to a limited number of locations within these census blocks. Farmers requests Commission designation as an Eligible Telecommunications Carrier (“ETC”) for the census block areas. Farmers is concurrently filing for CLEC authority in the Canby MN exchange under Docket No: P522/SA-18-719.

The Commission granted the Farmers petition for Eligible Telecommunications Carrier (“ETC”) status in the Dawson and Madison Minnesota exchanges for the purpose of participating in the FCC’s Lifeline program in Docket No.: P-522/AM-12-118. With this letter Farmers seeks to expand the ETC designation to all CLEC service areas, for the purpose of participating in the Lifeline program.

The attached map distinguishes the CAF II census blocks area as compared to the exchange areas where Farmers seeks ETC designation for the purpose providing the Lifeline discount to qualifying customers.

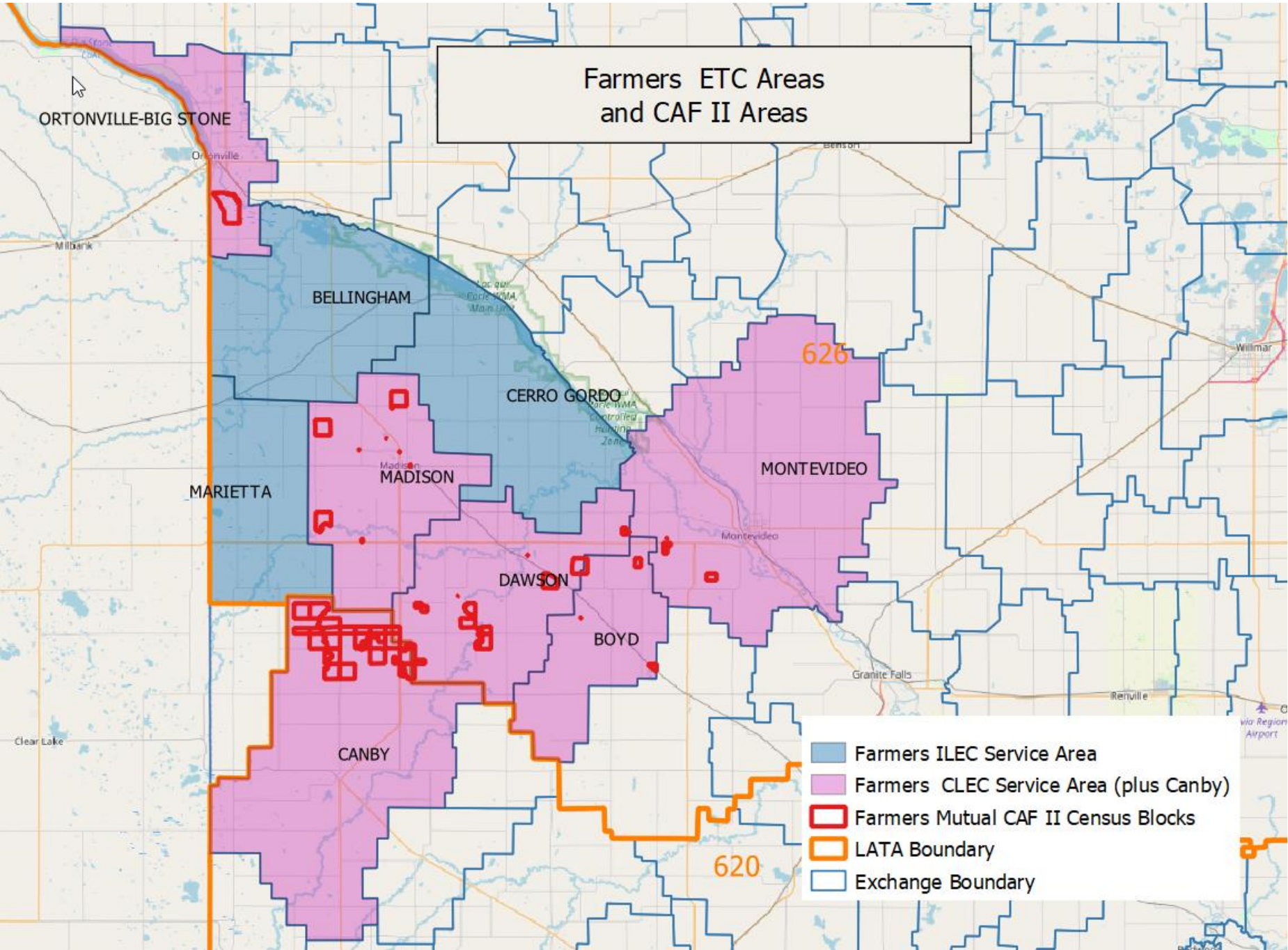
If you have any questions in this matter please contact me.

Sincerely,

/s/ Kevin Beyer

Kevin Beyer
General Manager

Farmers ETC Areas and CAF II Areas



- Farmers ILEC Service Area
- Farmers CLEC Service Area (plus Canby)
- Farmers Mutual CAF II Census Blocks
- LATA Boundary
- Exchange Boundary

Census Block	Exchange		
270731802002255	DAWSON	270731803001150	MONTEVIDEO
270731802002272	DAWSON	270731803001207	MONTEVIDEO
270731802002166	DAWSON	270731803001153	MONTEVIDEO
270731803003152	DAWSON	270731802002255	CANBY
270731803001136	DAWSON	270731802002221	CANBY
270731802002164	DAWSON	270731802002208	CANBY
270731802002161	DAWSON	270731802002220	CANBY
270731803002078	DAWSON	270731802002210	CANBY
270731803001232	DAWSON	270731802002259	CANBY
270731802002156	DAWSON	270731802002242	CANBY
270731802002254	DAWSON	270731802002245	CANBY
270731802002194	DAWSON	270731802002182	CANBY
270731803001131	DAWSON	270731802002209	CANBY
270731802002206	DAWSON	270731802002193	CANBY
270731803002074	DAWSON	270731802002241	CANBY
270731802002253	DAWSON	270731802002213	CANBY
270731803002145	BOYD	270731802002257	CANBY
270731803001172	BOYD	270731802002240	CANBY
270731803002139	BOYD	270731802002189	CANBY
270731803001131	BOYD	270731802002109	CANBY
270731802001014	ORTONVILLE-BIG STONE	270731802002254	CANBY
270731801002100	MADISON	270731802002186	CANBY
270731802002044	MADISON	270731802002218	CANBY
270731801003001	MADISON	270731802002252	CANBY
270731802001301	MADISON	270731802002194	CANBY
270731801001155	MADISON	270731802002243	CANBY
270731801002008	MADISON	270731802002206	CANBY
270731801001185	MADISON	270731802002249	CANBY
270731802001323	MADISON	270731802002207	CANBY
270731801001137	MADISON	270731802002253	CANBY
270731802002119	MADISON		