

0 0.75 1.5 3
Miles

Imagery Source: 2015 Color FSA
Data Source: Geronimo Energy, NRCS, Census, Mn Geo

Figure 14
Soils
Vestas V110/V120

Blazing Star Wind Farm 2
Lincoln County, MN

44.460125, -96.336861

- | | |
|--------------------------------|---|
| ▲ Preliminary Turbine Location | STATSGO Soil Type |
| ▲ Alternate Turbine Location | Flom-Barnes (s3542) |
| □ Project Area | Forman-Buse-Aastad (s6894) |
| □ Project Substation | Langhei-Hamerly-Barnes (s3467) |
| — Access Road | McIntosh variant-Du Page-Calco-Burr (s3541) |
| --- Alternate Access | Singsaas-Flom (s3543) |
| — Collection Line | Sioux-Poinsett-Buse (s6892) |
| — Crane Path | Vienna-Kranzburg-Hidewood (s3545) |
| □ County Boundary | Water (s8369) |

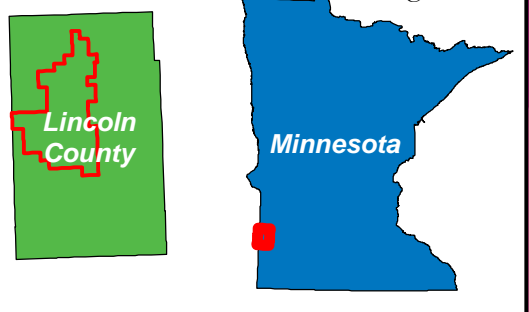
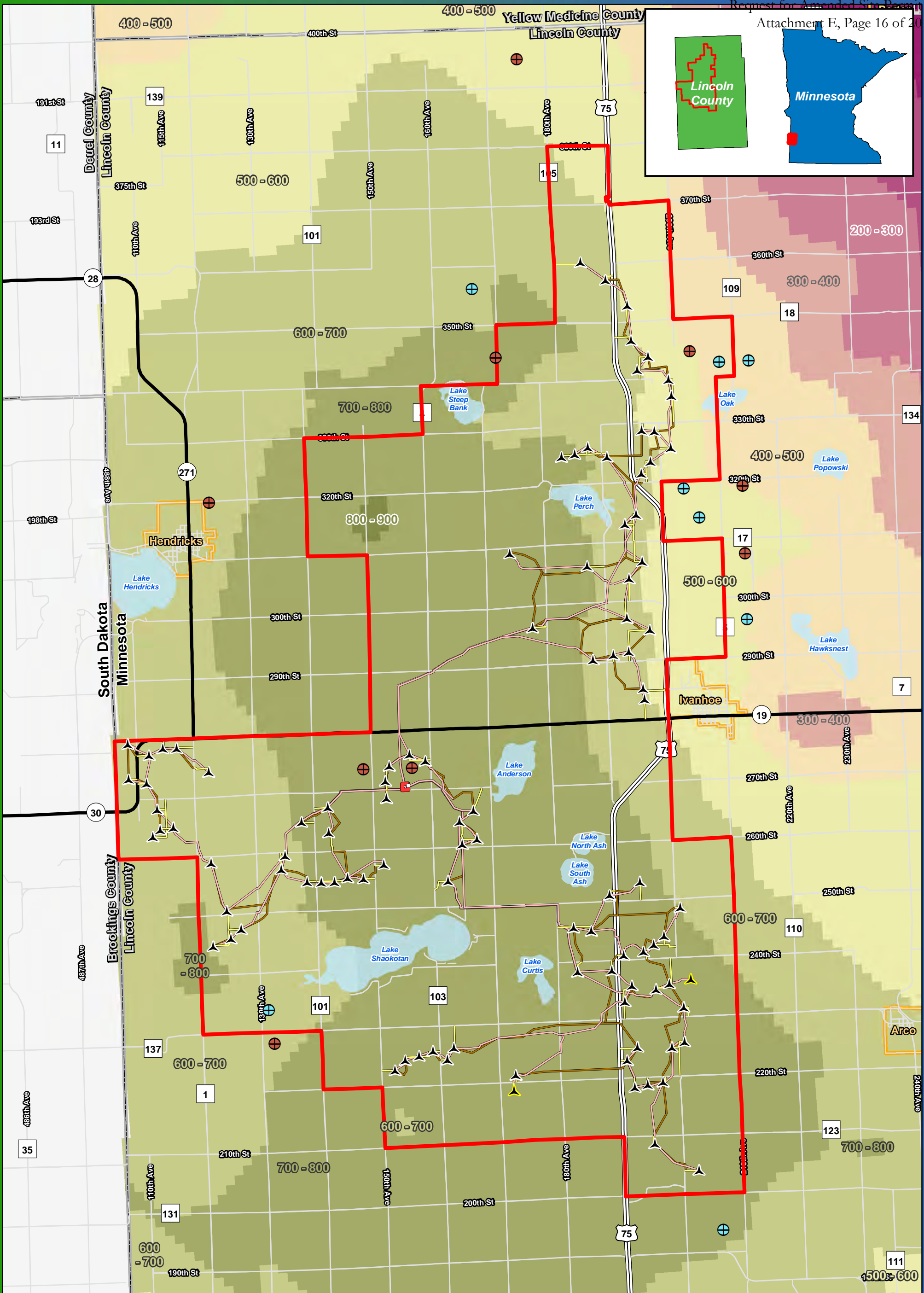
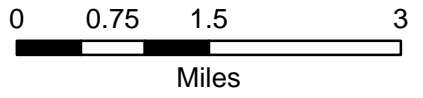


Figure 15
Site Geology and
Depth to Bedrock
Vestas V110/V120

Blazing Star Wind Farm 2
Lincoln County, MN
44.460125, -96.336861



Data Source: Geronimo Energy, MN DNR, MN DOC, Mn Geo, MN DOT

- | | | |
|--------------------------------|------------------------------|---|
| ▲ Preliminary Turbine Location | ▭ County Boundary | Depth to Bedrock (feet)
0 - 100
100 - 200
200 - 300
300 - 400
400 - 500
500 - 600
600 - 700
700 - 800
800 - 900 |
| ▲ Alternate Turbine Location | Gravel Pits | |
| ▭ Project Area Boundary | ⊕ Aggregate Pit (Mn/DOT) | |
| ▭ Project Substation | ⊕ Aggregate Pit (Prospected) | |
| — Access Road | | |
| - - - Alternate Access Road | | |
| — Collection Line | | |
| — Crane Path | | |

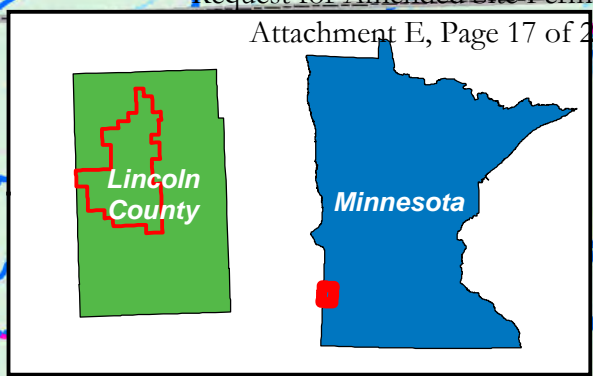
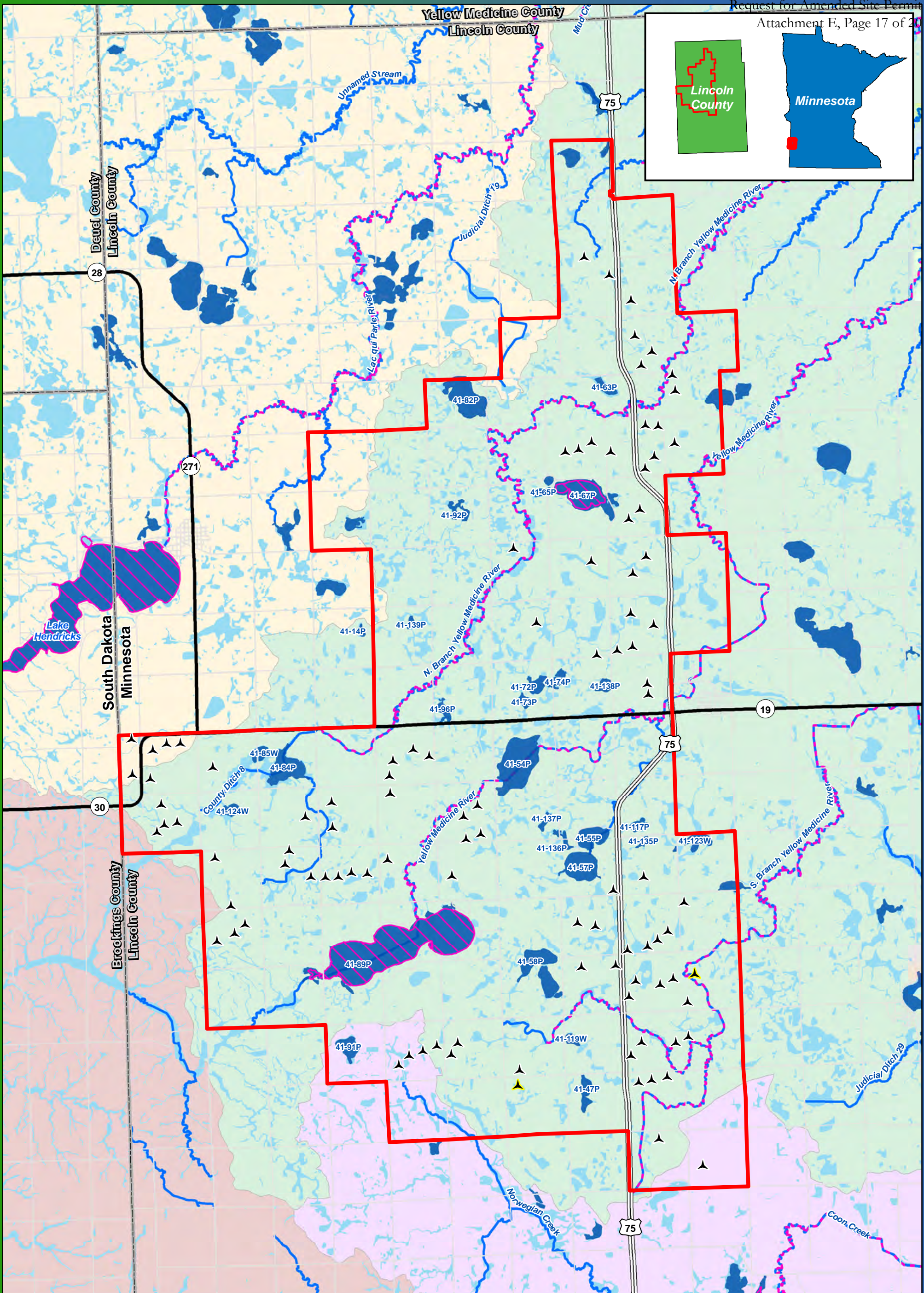


Figure 16
Surface Waters
Vestas V110/V120

Blazing Star Wind Farm 2
Lincoln County, MN
44.460125, -96.336861

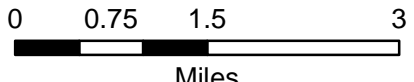
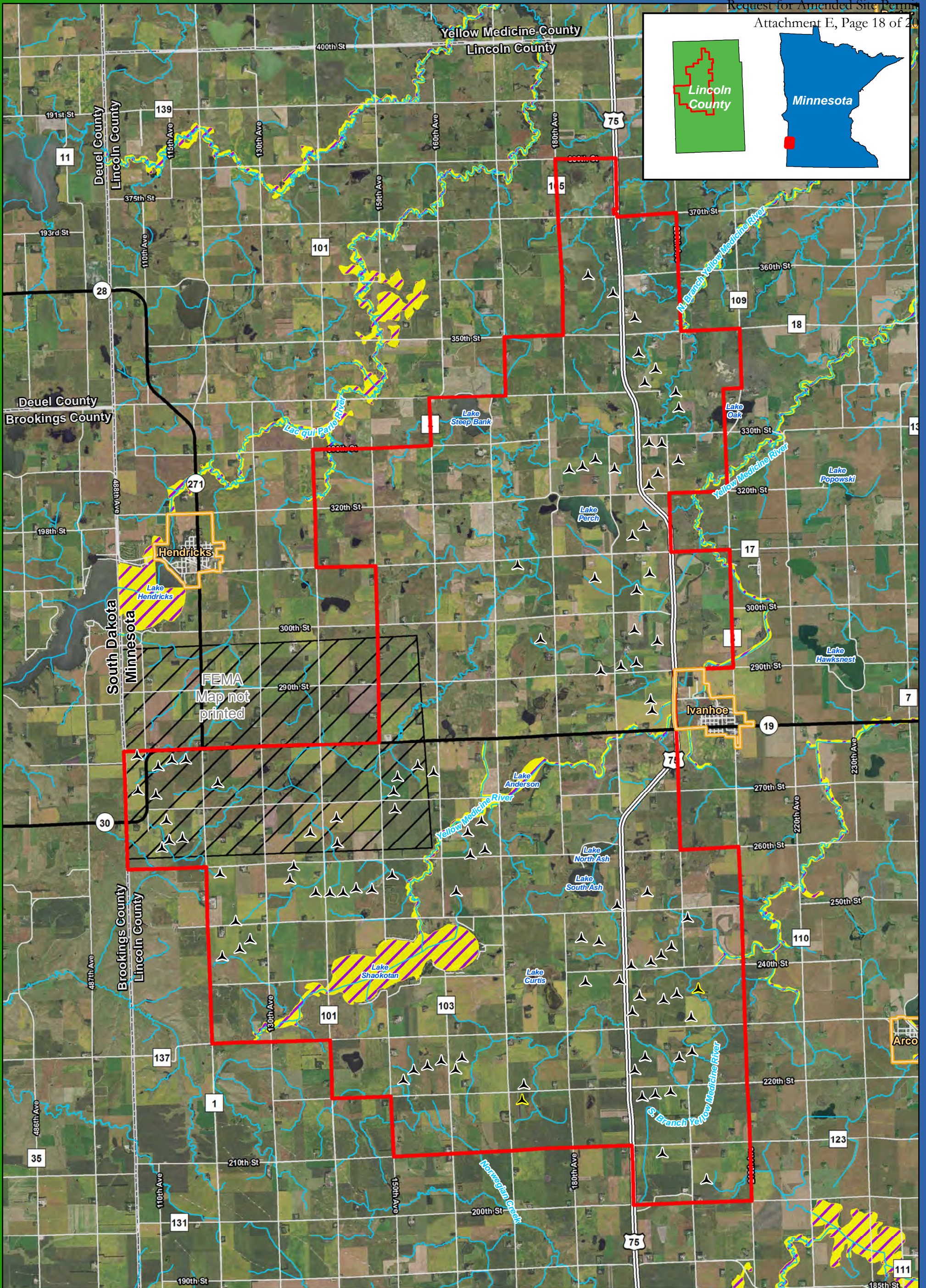
- ▲ Preliminary Turbine Location
- ▲ Alternate Turbine Location
- ▭ Project Area Boundary
- ▭ Impaired Stream
- ▭ Impaired Lakes
- ▭ MN NWI Wetland
- ▭ 24K Stream or Ditch
- ▭ Public Water Watercourse
- ▭ Public Water Basin/Wetland
- HUC 8**
- ▭ Minnesota River - Yellow Medicine River Watershed
- ▭ Lac Qui Parle River Watershed
- ▭ Upper Big Sioux River Watershed
- ▭ Redwood



0 0.75 1.5 3
 Miles

Data Source: Geronimo Energy, MN DNR, MN DOC, Mn Geo, MPCA

All mapped water features will be field verified



**Figure 17
FEMA Floodplain
Vestas V110/V120**

**Blazing Star Wind Farm 2
Lincoln County, MN**

44.460125, -96.336861

- Preliminary Turbine Location
- Alternate Turbine Location
- Project Area
- County Boundary
- FEMA Map Not Printed
- 100 Year Floodplain
- 24k Stream or Ditch

Imagery Source: 2015 Color FSA
Data Source: Geronimo Energy, MN DNR

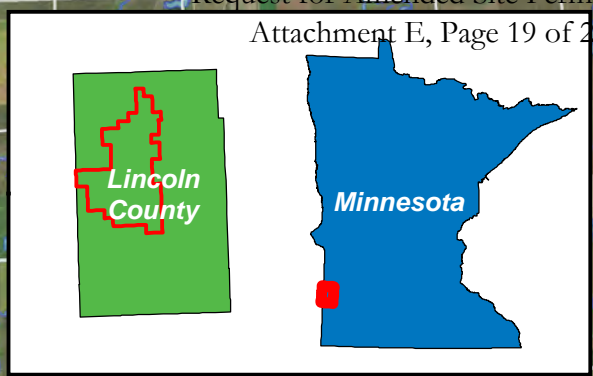
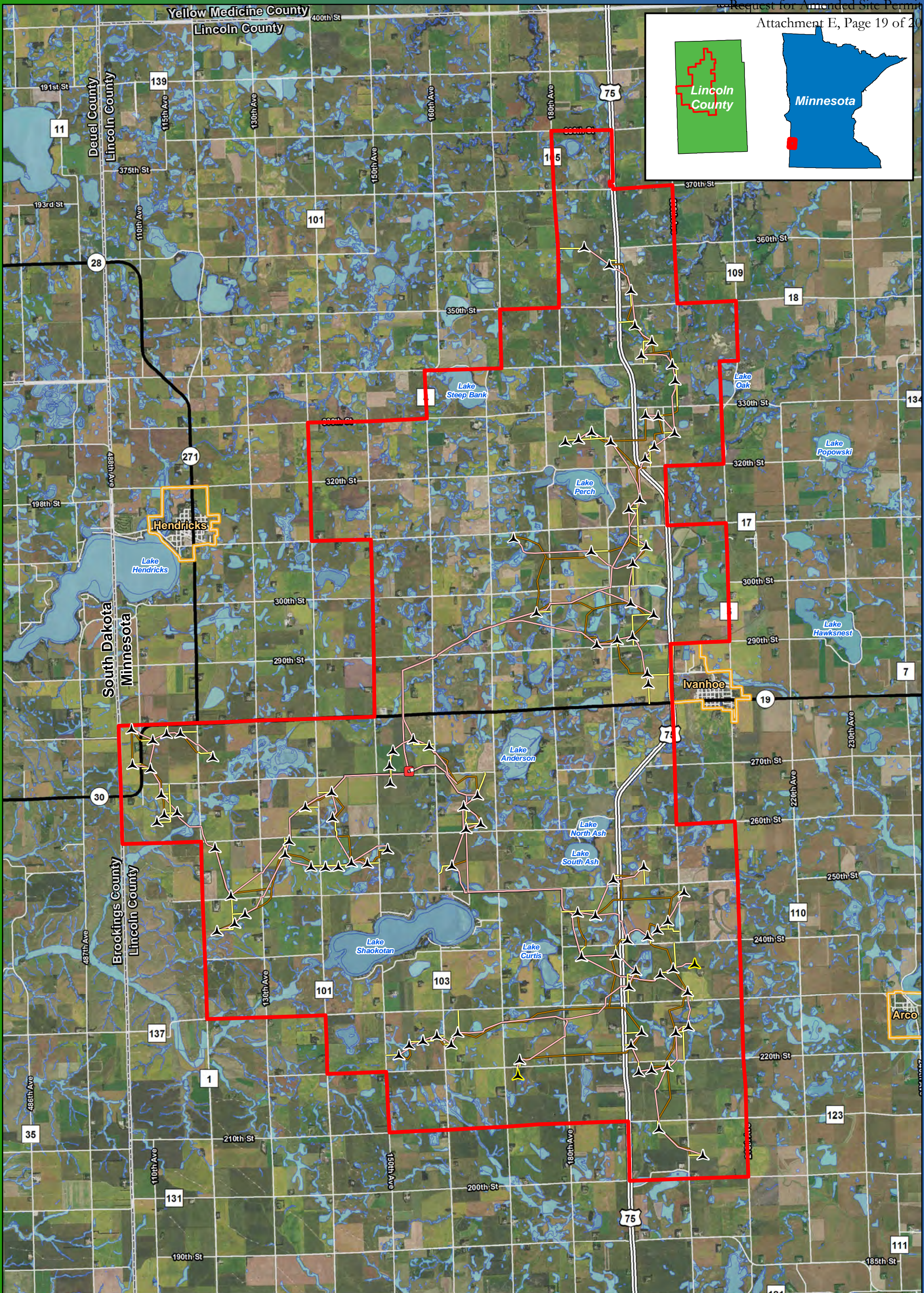
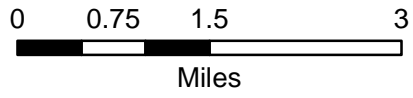


Figure 18
Wetlands Inventory
Vestas V110\V120

Blazing Star Wind Farm 2
Lincoln County, MN
44.460125, -96.336861

- Preliminary Turbine Location
- Alternate Turbine
- Project Area
- Project Substation
- Access Road
- Alternate Access
- Collection Line
- Crane Path
- County Boundary
- NWI (MNDNR Update)

*Turbines are not to scale
 *All mapped water features will be field verified



Imagery Source: 2015 Color FSA
 Data Source: Geronimo Energy, MN DNR, USFWS

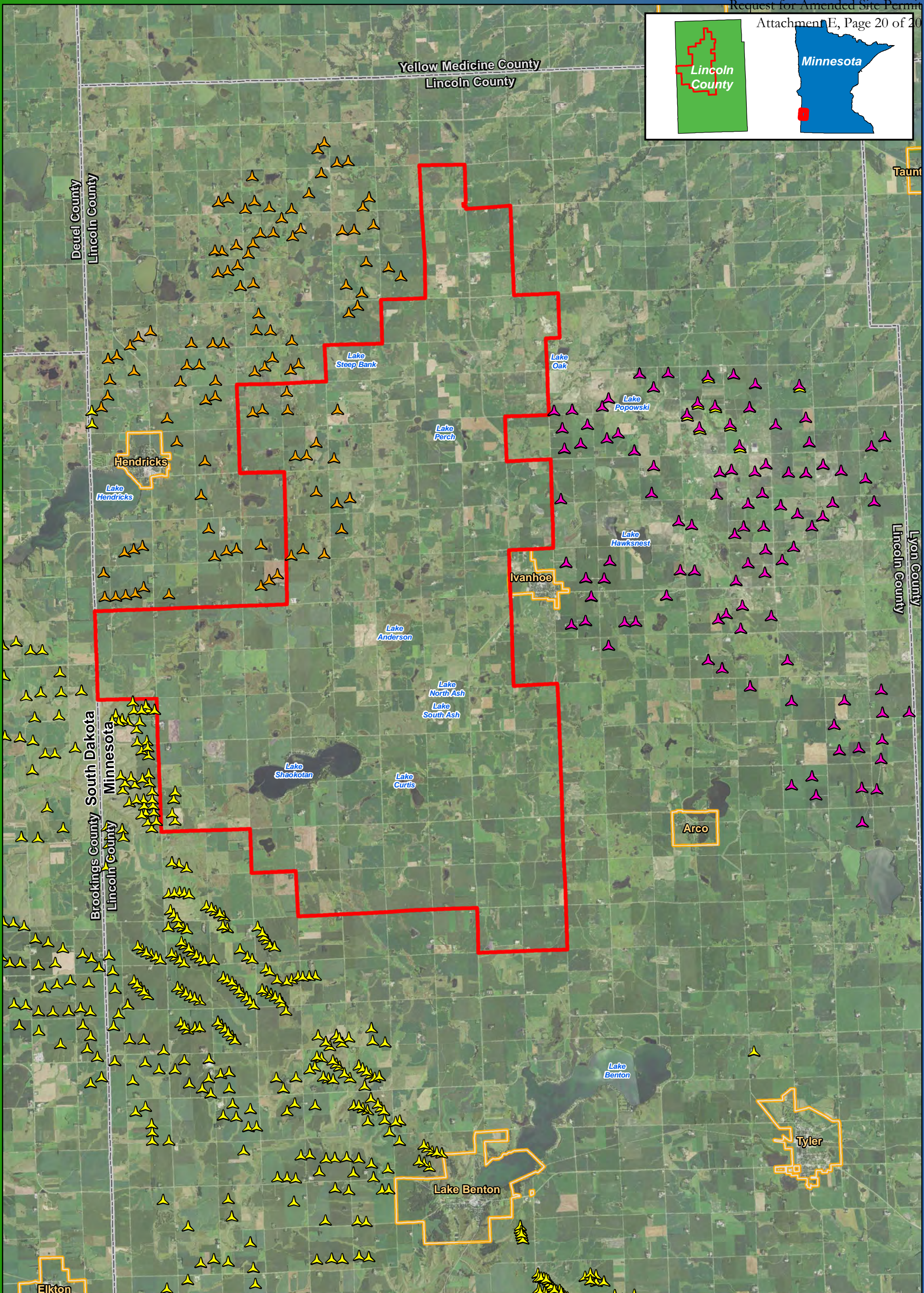
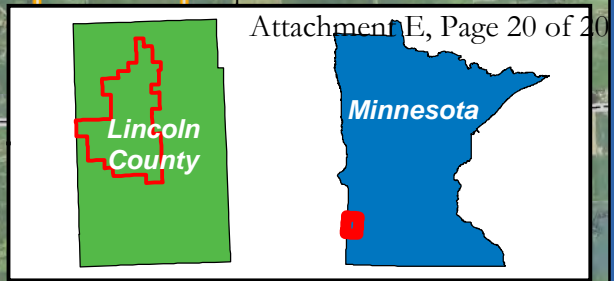
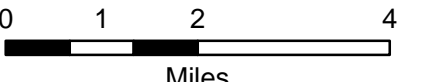


Figure 19
Existing and Permitted Wind Turbines

Blazing Star Wind Farm 2
Lincoln County, MN

44.460125, -96.336861

- Project Area Boundary
- ▲ Existing Turbine Location
- ▲ Red Pine Permitted Turbine (V100/V110)
- ▲ Blazing Star Permitted Turbine (V110/V120)



Imagery Source: 2015 Color FSA
 Data Source: Geronimo Energy, MN DNR, USGS, Census