

- Proposed Pipeline - Sandpiper
- Existing Enbridge Pipelines
- Foreign Pipes
- Transmission Lines
- SPREAD BREAK
- Milepost - Sandpiper
- Potential Block Valve
- Environmental Survey Area (ESA)
- Tract Boundary
- Facility Boundary
- Previously Sited Facility Boundary
- Section Lines



MLB			10/10/13	0	PUC Submittal
DRAWN	CHECKED	APPROVED	DATE	REV NO.	DESCRIPTION

**ENBRIDGE PIPELINES (NORTH DAKOTA) LLC**

**PROPOSED SANDPIPER PIPELINE PROJECT  
ROUTE MAP  
Polk County, MN**

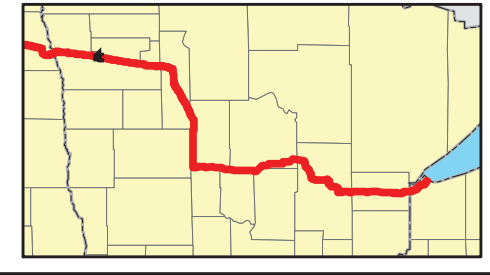
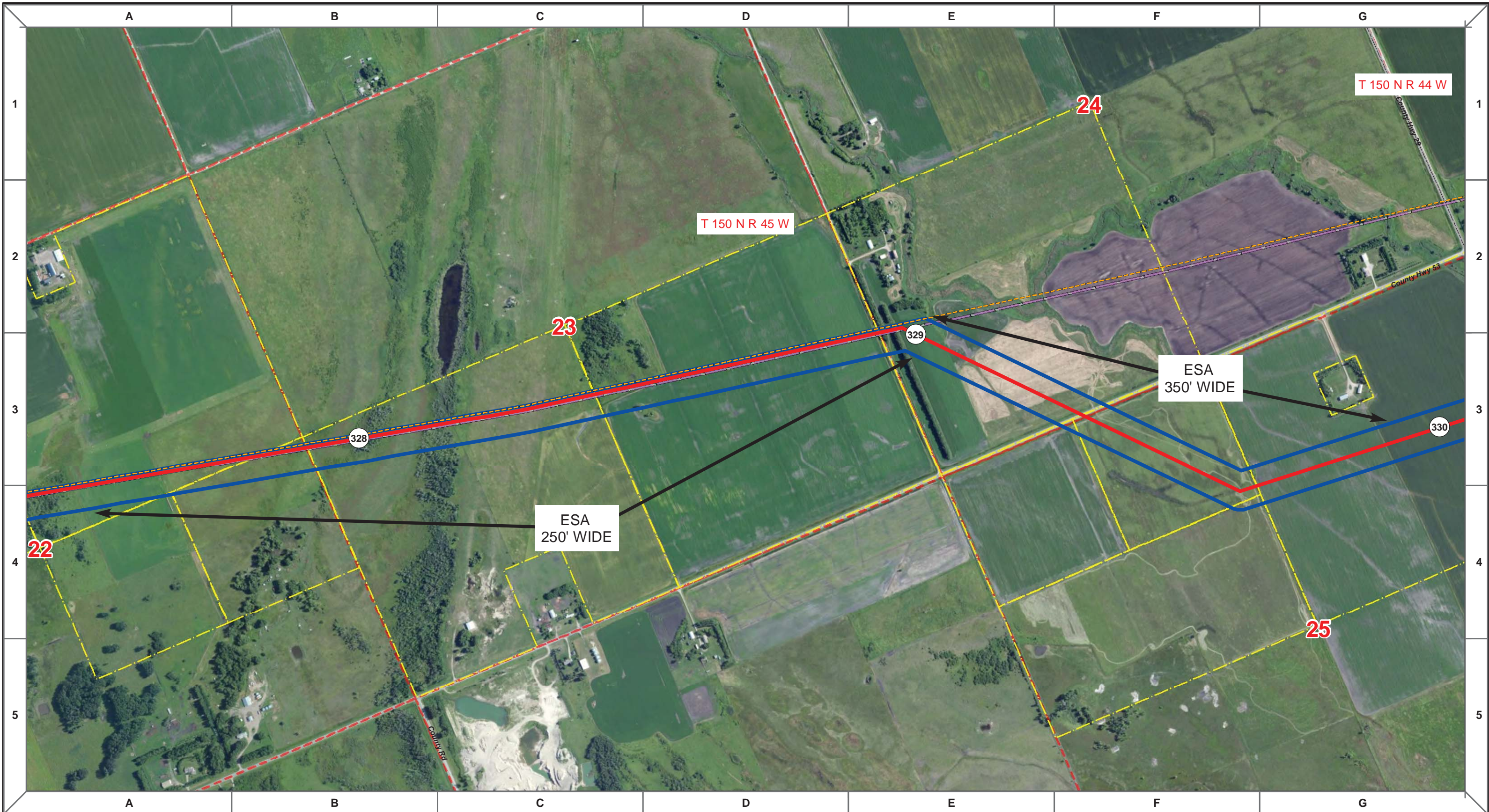
<small>DRAWN:</small> MLB	<small>CHECKED:</small> --
<small>DATE:</small> Oct 18, 2013	<small>SCALE:</small> AS SHOWN

Spread:5
Map: 13 of 128









- Proposed Pipeline - Sandpiper
- Existing Enbridge Pipelines
- Foreign Pipes
- Transmission Lines
- SPREAD BREAK
- Milepost - Sandpiper
- Potential Block Valve
- Environmental Survey Area (ESA)
- Tract Boundary
- Facility Boundary
- Previously Sited Facility Boundary
- Section Lines

500 250 0 500 1,000 Feet

MLB	DATE	REV NO.	DESCRIPTION
	10/10/13	0	PUC Submittal

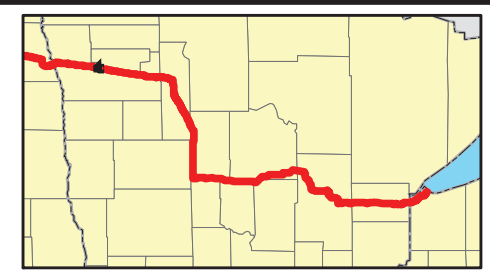
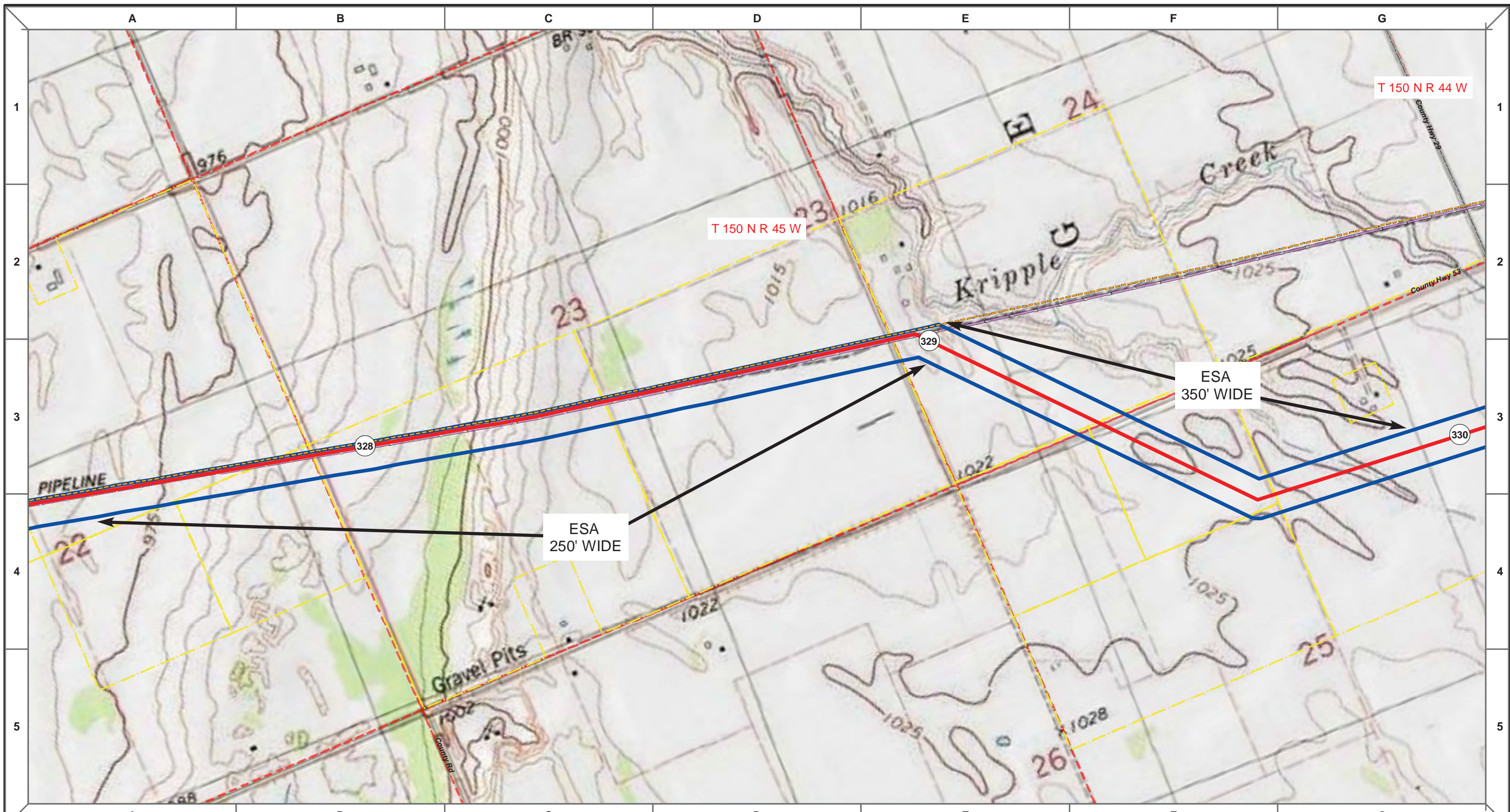
ENBRIDGE PIPELINES (NORTH DAKOTA) LLC

### PROPOSED SANDPIPER PIPELINE PROJECT ROUTE MAP Polk County, MN

DRAWN: MLB	CHECKED: --
DATE: Oct 18, 2013	SCALE: AS SHOWN

Spread:5
Map: 14 of 128





Proposed Pipeline - Sandpiper	Milepost - Sandpiper	Tract Boundary
Existing Enbridge Pipelines	Potential Block Valve	Facility Boundary
Foreign Pipes	Environmental Survey Area (ESA)	Previously Sited Facility Boundary
Transmission Lines		Section Lines
SPREAD BREAK		

500 250 0 500 1,000 Feet

MLB	DATE	REV NO.	DESCRIPTION
	10/10/13	0	PUC Submittal

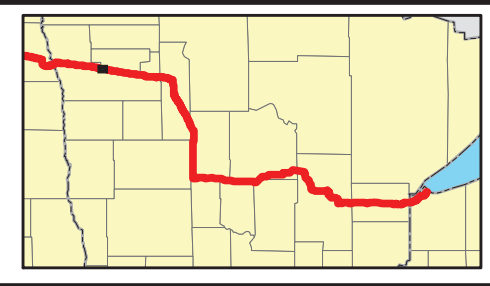
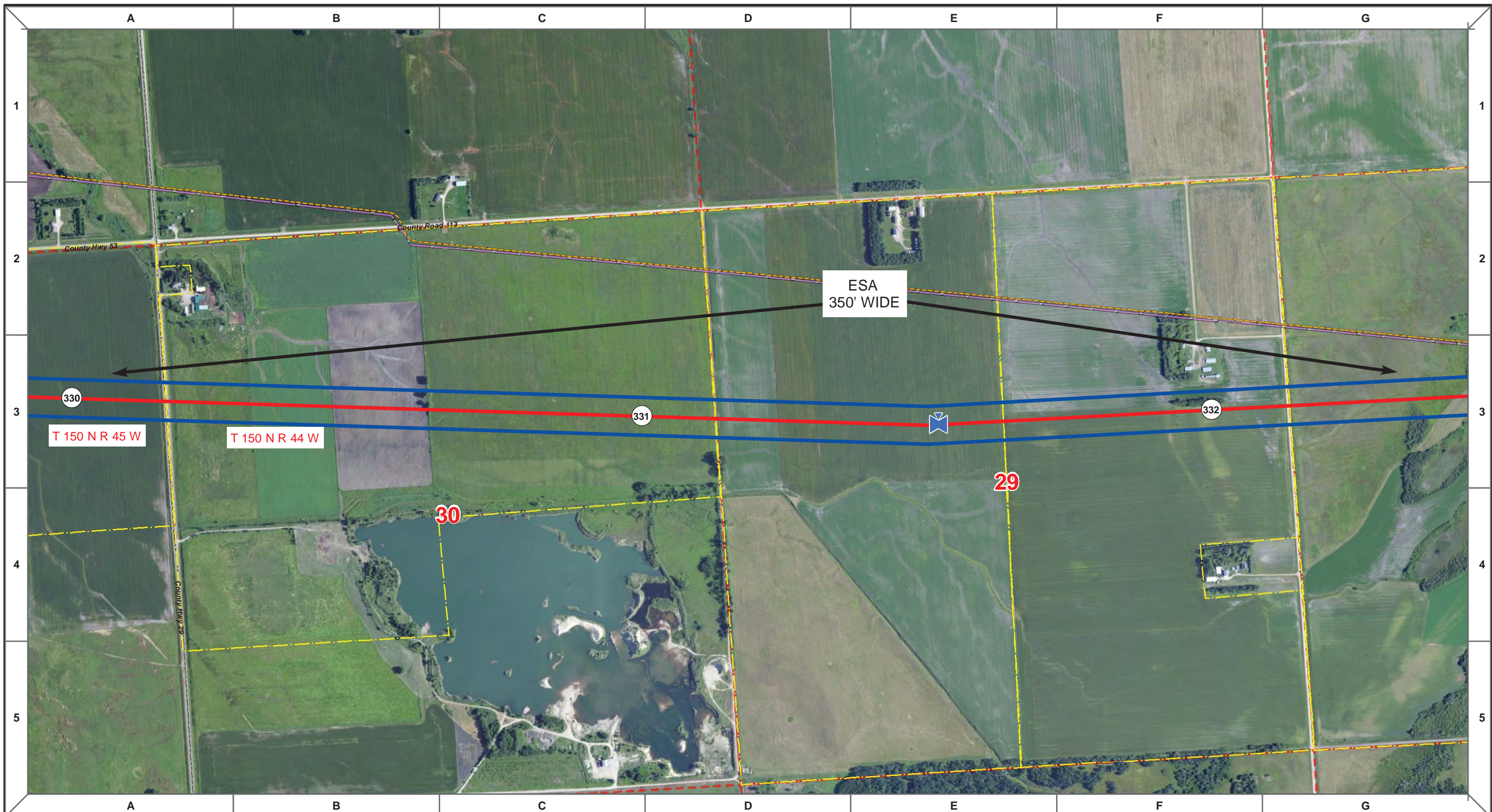
**ENBRIDGE PIPELINES (NORTH DAKOTA) LLC**

**PROPOSED SANDPIPER PIPELINE PROJECT**  
**ROUTE MAP**  
**Polk County, MN**

<small>DRAWN:</small> MLB	<small>CHECKED:</small> --
<small>DATE:</small> Oct 18, 2013	<small>SCALE:</small> AS SHOWN

Spread:5 Map: 14 of 128





Proposed Pipeline - Sandpiper	Milepost - Sandpiper	Tract Boundary
Existing Enbridge Pipelines	Potential Block Valve	Facility Boundary
Foreign Pipes	Environmental Survey Area (ESA)	Previously Sited Facility Boundary
Transmission Lines		Section Lines
SPREAD BREAK		

500 250 0 500 1,000 Feet

MLB	DATE	REV NO.	DESCRIPTION
	10/10/13	0	PUC Submittal

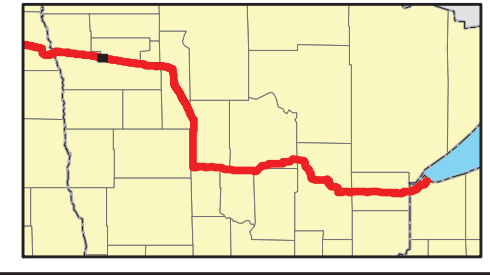
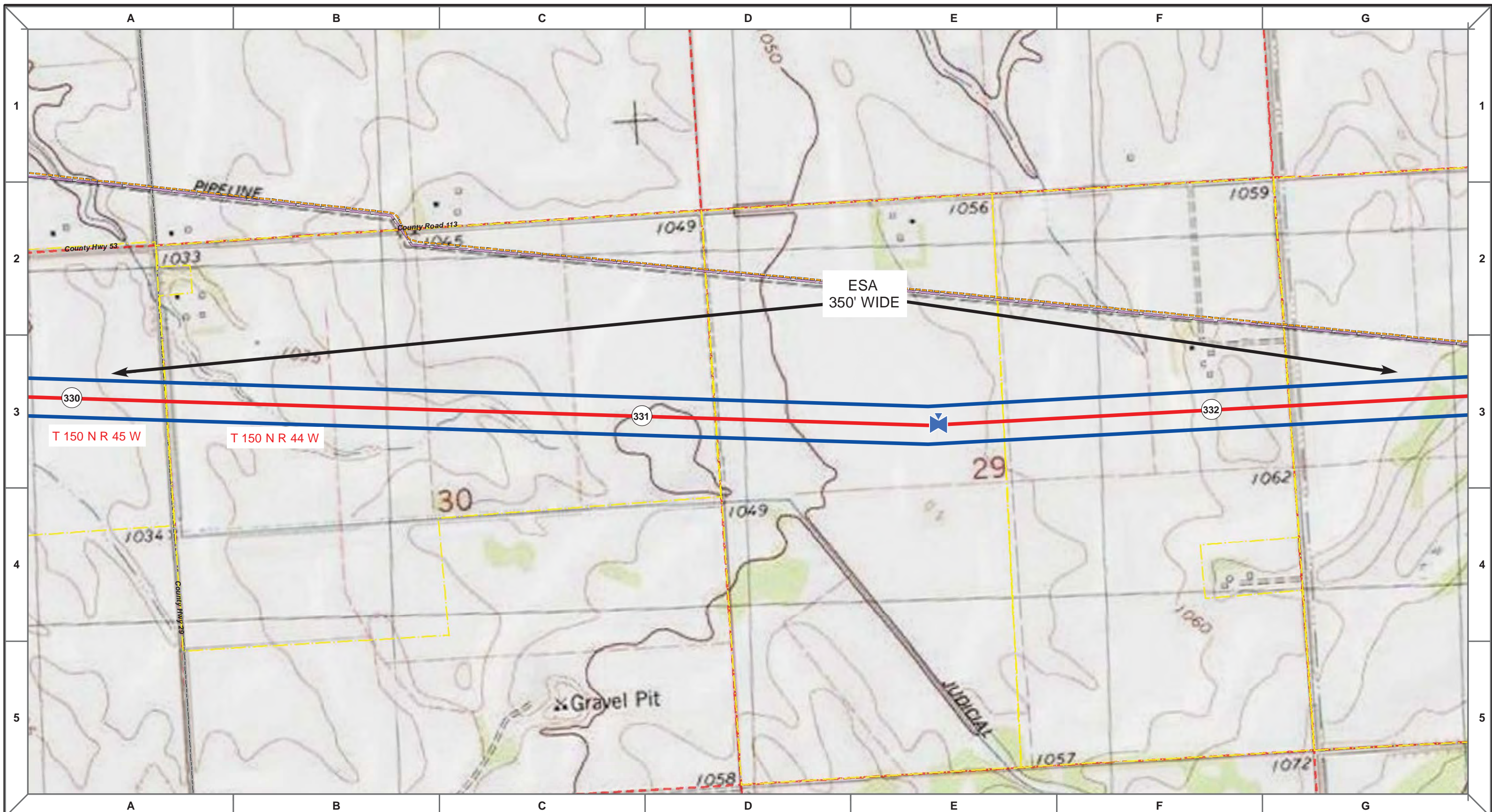
**ENBRIDGE PIPELINES (NORTH DAKOTA) LLC**

**PROPOSED SANDPIPER PIPELINE PROJECT**  
**ROUTE MAP**  
**Polk & Red Lake County, MN**

DRAWN: <i>MLB</i>	CHECKED: <i>--</i>
DATE: <i>Nov 05, 2013</i>	SCALE: <i>AS SHOWN</i>

Spread:5 Map: 15 of 128





- Proposed Pipeline - Sandpiper
- Existing Enbridge Pipelines
- - - Foreign Pipes
- - - Transmission Lines
- - - SPREAD BREAK
- 1 Milepost - Sandpiper
- ✕ Potential Block Valve
- Environmental Survey Area (ESA)
- Tract Boundary
- Facility Boundary
- Previously Sited Facility Boundary
- Section Lines



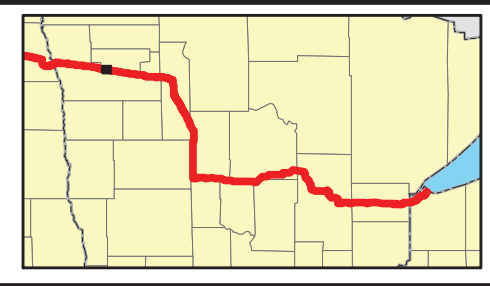
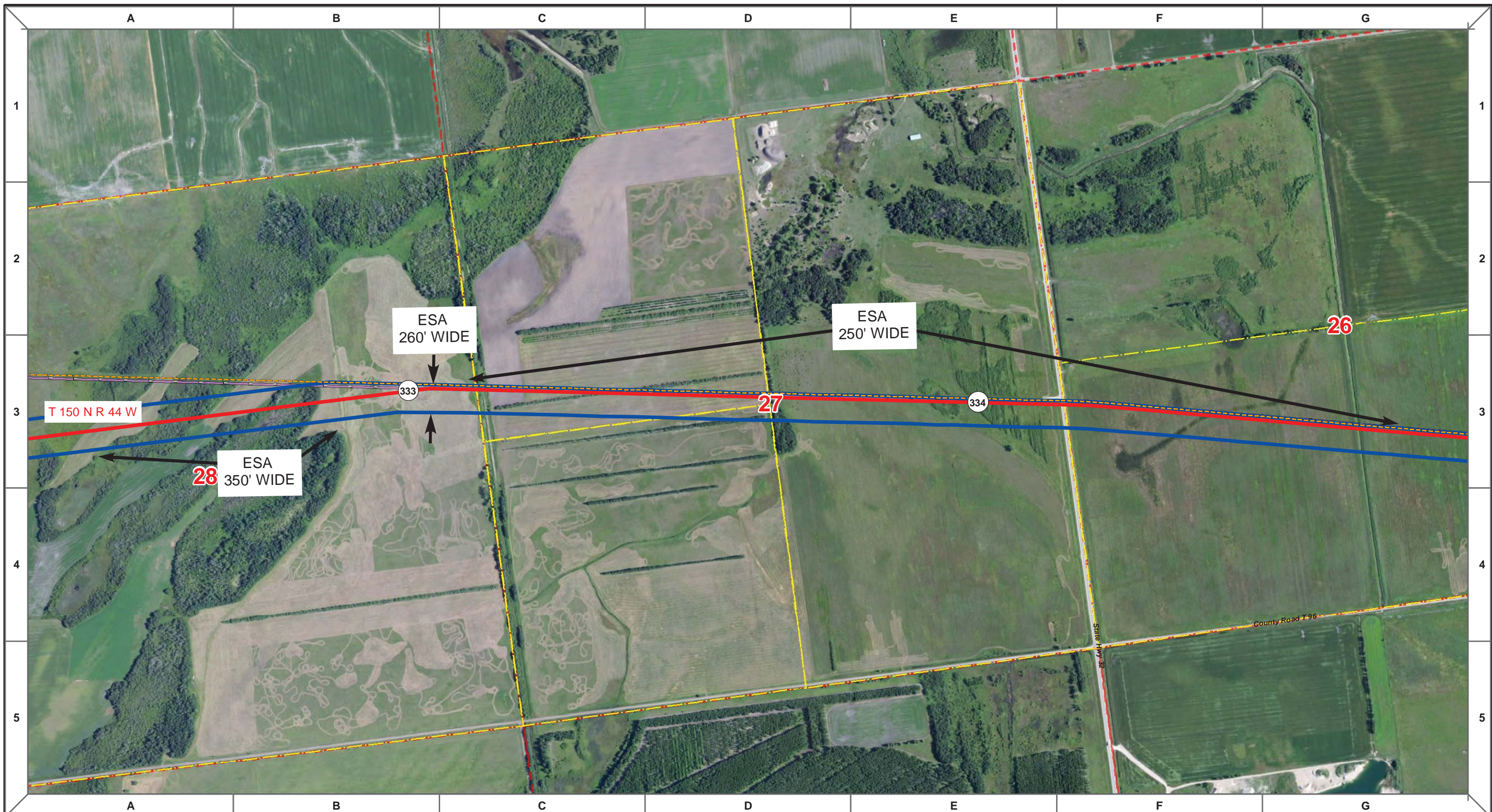
MLB	10/10/13	0	PUC Submittal	
DRAWN	CHECKED	APPROVED	DATE	REV NO.

**ENBRIDGE PIPELINES (NORTH DAKOTA) LLC**

**PROPOSED SANDPIPER  
PIPELINE PROJECT  
ROUTE MAP  
Polk & Red Lake County, MN**

DRAWN: <i>MLB</i>	CHECKED: <i>--</i>
DATE: <i>Nov 05, 2013</i>	SCALE: <i>AS SHOWN</i>
Spread:5	Map: 15 of 128





Proposed Pipeline - Sandpiper	Milepost - Sandpiper	Tract Boundary
Existing Enbridge Pipelines	Potential Block Valve	Facility Boundary
Foreign Pipes	Environmental Survey Area (ESA)	Previously Sited Facility Boundary
Transmission Lines		Section Lines
SPREAD BREAK		

500 250 0 500 1,000 Feet

MLB		10/10/13	0		PUC Submittal
DRAWN	CHECKED	APPROVED	DATE	REV NO.	DESCRIPTION

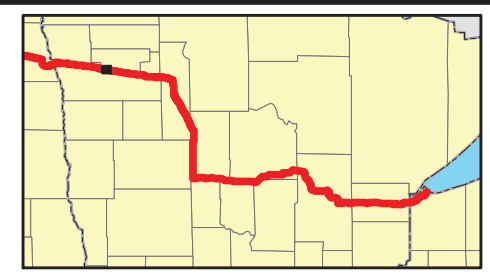
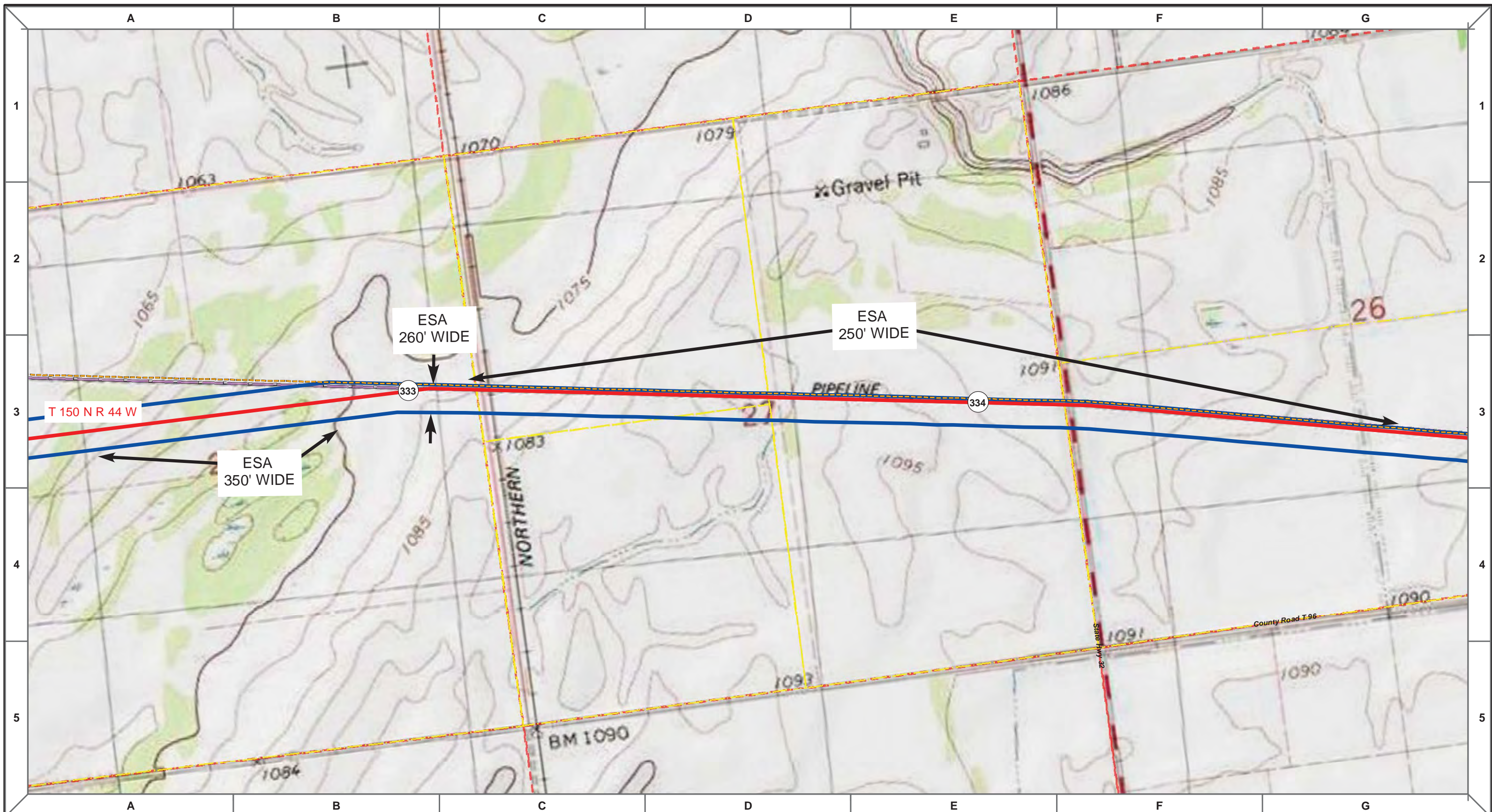
**ENBRIDGE PIPELINES (NORTH DAKOTA) LLC**

**PROPOSED SANDPIPER PIPELINE PROJECT  
ROUTE MAP  
Polk County, MN**

DRAWN: <i>MLB</i>	CHECKED: --
DATE: Oct 18, 2013	SCALE: AS SHOWN

Spread:5 Map: 16 of 128





Proposed Pipeline - Sandpiper	Milepost - Sandpiper	Tract Boundary
Existing Enbridge Pipelines	Potential Block Valve	Facility Boundary
Foreign Pipes	Environmental Survey Area (ESA)	Previously Sited Facility Boundary
Transmission Lines		Section Lines
SPREAD BREAK		

500 250 0 500 1,000 Feet

MLB	DATE	REV NO.	DESCRIPTION
	10/10/13	0	PUC Submittal

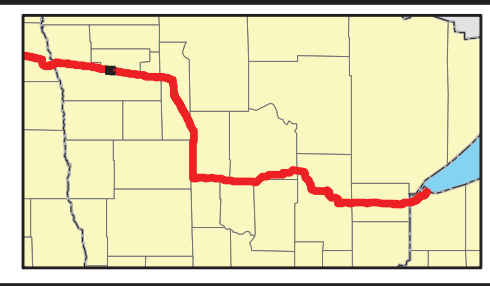
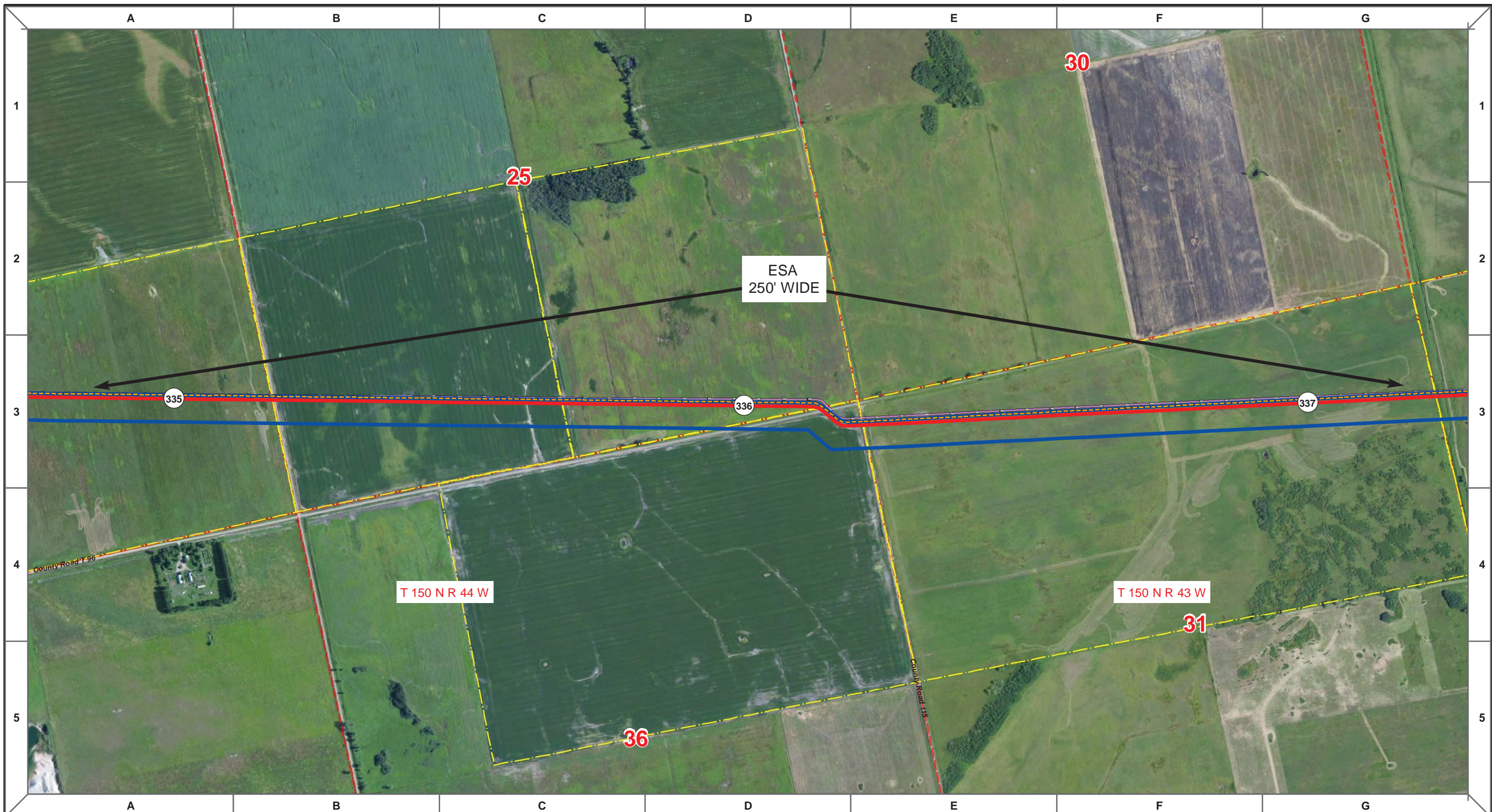
**ENBRIDGE PIPELINES (NORTH DAKOTA) LLC**

**PROPOSED SANDPIPER PIPELINE PROJECT  
ROUTE MAP  
Polk County, MN**

DRAWN: <b>MLB</b>	CHECKED: <b>--</b>
DATE: <b>Oct 18, 2013</b>	SCALE: <b>AS SHOWN</b>

Spread:5 Map: 16 of 128





Proposed Pipeline - Sandpiper	Milepost - Sandpiper	Tract Boundary
Existing Enbridge Pipelines	Potential Block Valve	Facility Boundary
Foreign Pipes	Environmental Survey Area (ESA)	Previously Sited Facility Boundary
Transmission Lines		Section Lines
SPREAD BREAK		

500 250 0 500 1,000 Feet

DRAWN	CHECKED	APPROVED	DATE	REV NO.	DESCRIPTION
MLB			10/10/13	0	PUC Submittal

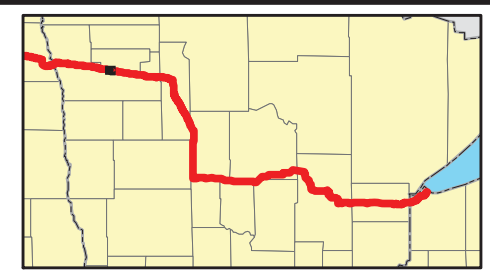
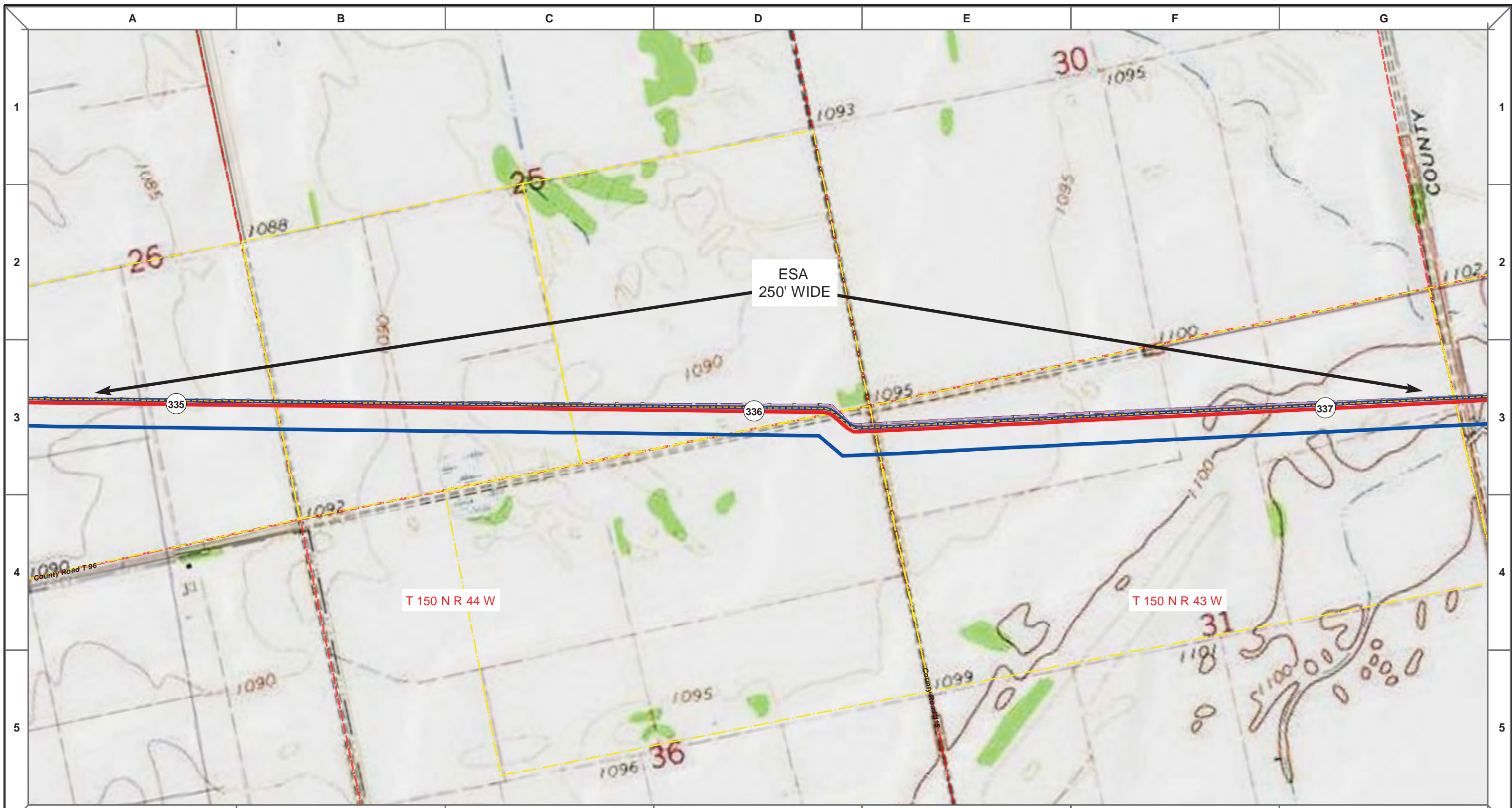
**ENBRIDGE PIPELINES (NORTH DAKOTA) LLC**

**PROPOSED SANDPIPER  
PIPELINE PROJECT  
ROUTE MAP  
Polk County, MN**

<small>DRAWN:</small> MLB	<small>CHECKED:</small> --
<small>DATE:</small> Oct 18, 2013	<small>SCALE:</small> AS SHOWN

Spread:5 Map: 17 of 128





Proposed Pipeline - Sandpiper	Milepost - Sandpiper	Tract Boundary
Existing Enbridge Pipelines	Potential Block Valve	Facility Boundary
Foreign Pipes	Environmental Survey Area (ESA)	Previously Sited Facility Boundary
Transmission Lines		Section Lines
SPREAD BREAK		

500 250 0 500 1,000 Feet

MLB	DATE	REV NO.	DESCRIPTION
	10/10/13	0	PUC Submittal

**ENBRIDGE PIPELINES (NORTH DAKOTA) LLC**

**PROPOSED SANDPIPER PIPELINE PROJECT  
ROUTE MAP  
Polk County, MN**

DRAWN: <b>MLB</b>	CHECKED: --
DATE: <b>Oct 18, 2013</b>	SCALE: <b>AS SHOWN</b>

Spread:5 Map: 17 of 128

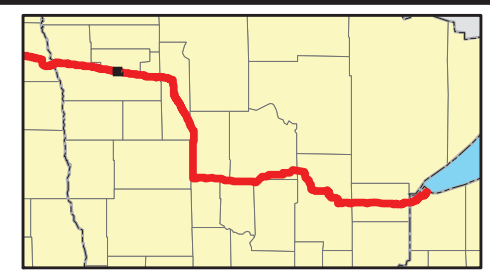
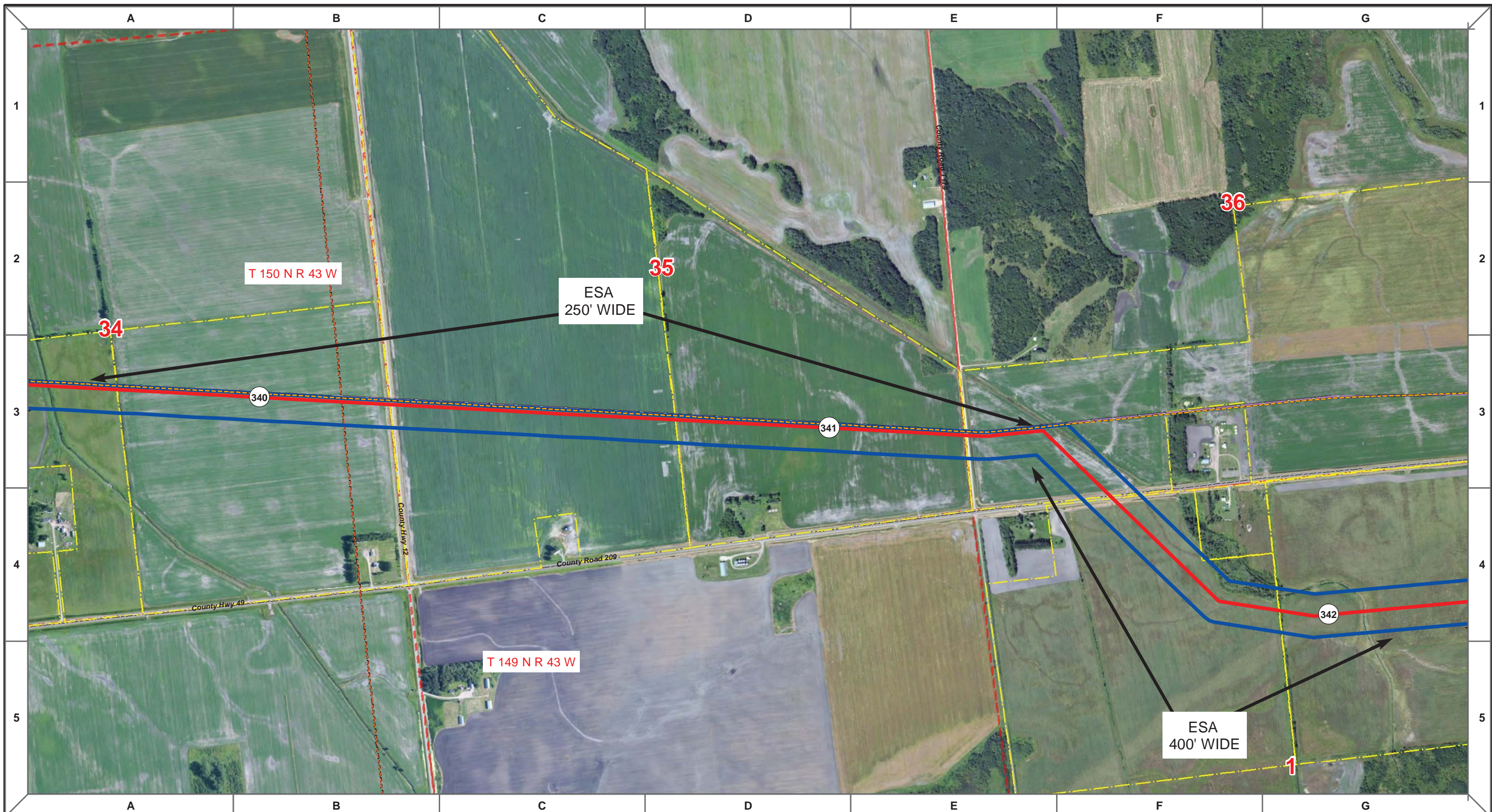












Proposed Pipeline - Sandpiper	Milepost - Sandpiper	Tract Boundary
Existing Enbridge Pipelines	Potential Block Valve	Facility Boundary
Foreign Pipes	Environmental Survey Area (ESA)	Previously Sited Facility Boundary
Transmission Lines		Section Lines
SPREAD BREAK		

500 250 0 500 1,000 Feet

MLB	DATE	REV NO.	DESCRIPTION
	10/10/13	0	PUC Submittal

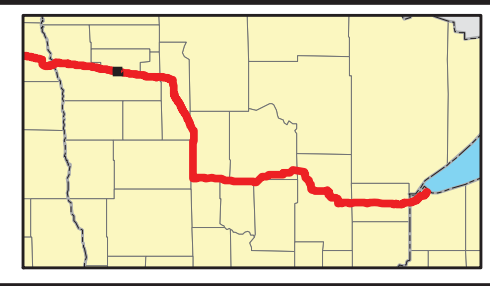
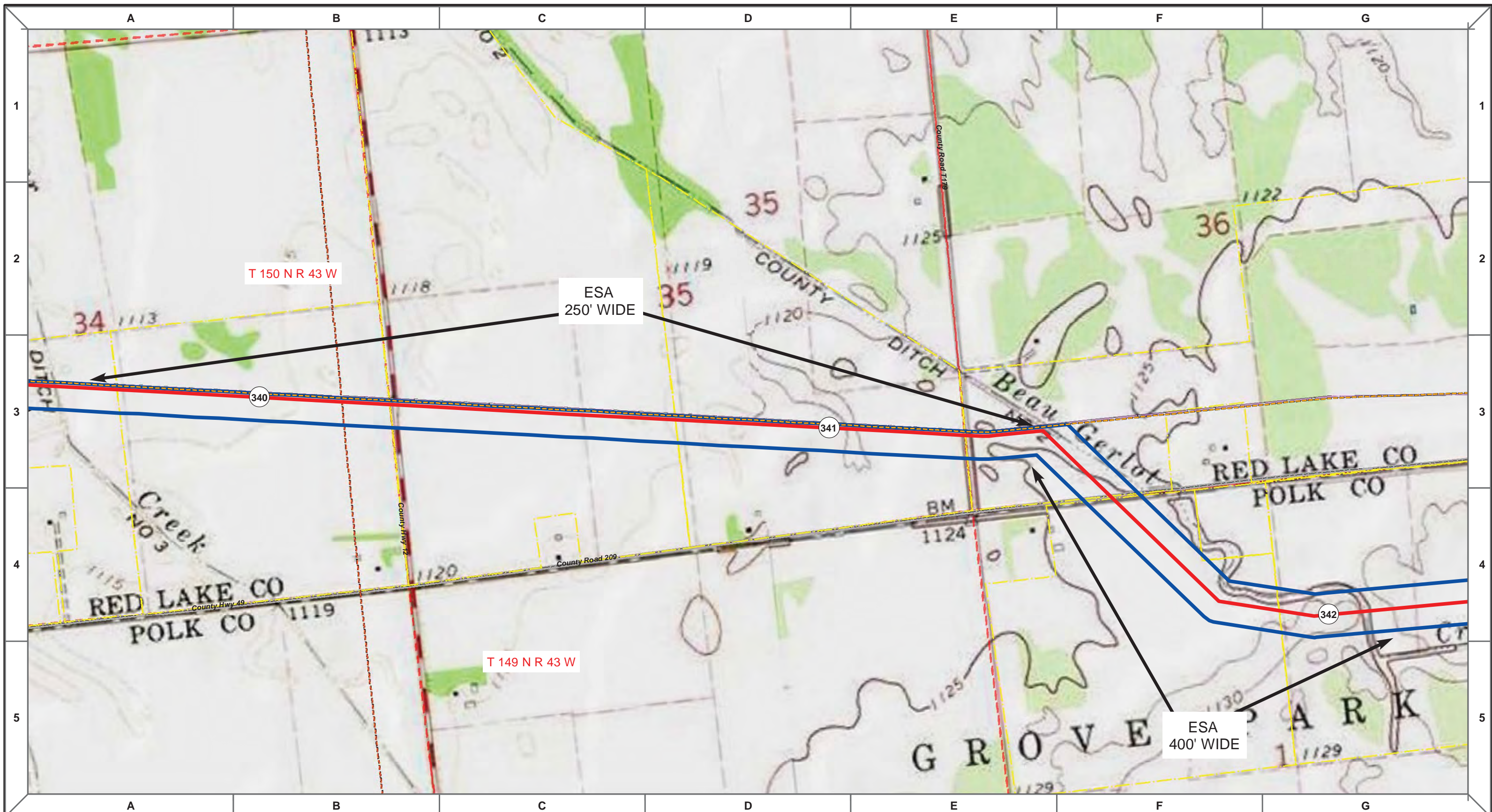
**ENBRIDGE PIPELINES (NORTH DAKOTA) LLC**

**PROPOSED SANDPIPER PIPELINE PROJECT**  
**ROUTE MAP**  
 Red Lake & Polk County, MN

DRAWN: <b>MLB</b>	CHECKED: <b>--</b>
DATE: <b>Oct 18, 2013</b>	SCALE: <b>AS SHOWN</b>

Spread:5 Map: 19 of 128





Proposed Pipeline - Sandpiper	Milepost - Sandpiper	Tract Boundary
Existing Enbridge Pipelines	Potential Block Valve	Facility Boundary
Foreign Pipes	Environmental Survey Area (ESA)	Previously Sited Facility Boundary
Transmission Lines		Section Lines
SPREAD BREAK		

500 250 0 500 1,000 Feet

MLB	DATE	REV NO.	DESCRIPTION
	10/10/13	0	PUC Submittal

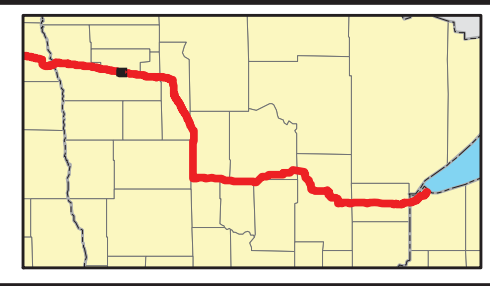
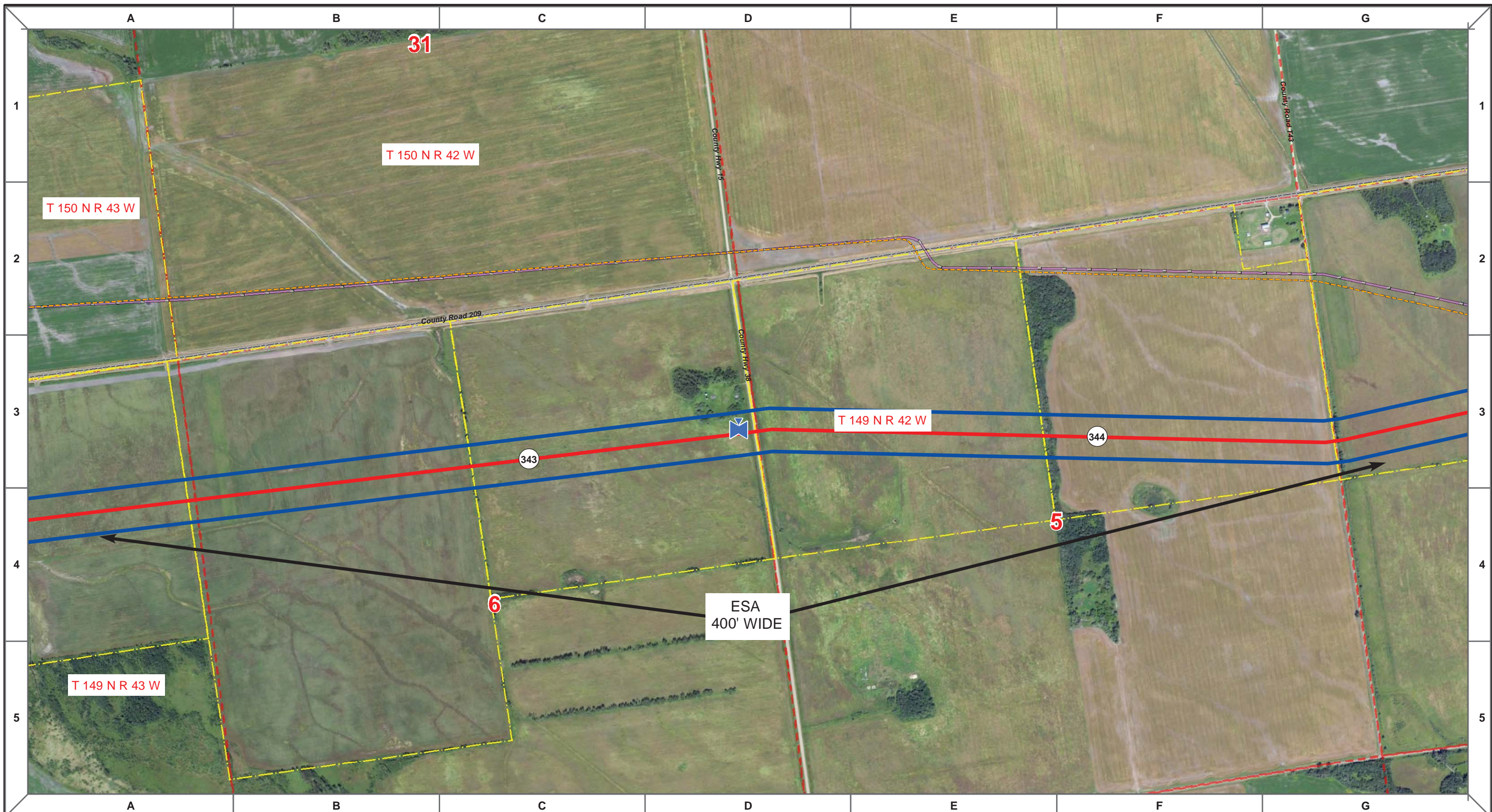
**ENBRIDGE PIPELINES (NORTH DAKOTA) LLC**

**PROPOSED SANDPIPER PIPELINE PROJECT**  
**ROUTE MAP**  
**Red Lake & Polk County, MN**

DRAWN: <b>MLB</b>	CHECKED: <b>--</b>
DATE: <b>Oct 18, 2013</b>	SCALE: <b>AS SHOWN</b>

Spread:5 Map: 19 of 128





Proposed Pipeline - Sandpiper	Milepost - Sandpiper	Tract Boundary
Existing Enbridge Pipelines	Potential Block Valve	Facility Boundary
Foreign Pipes	Environmental Survey Area (ESA)	Previously Sited Facility Boundary
Transmission Lines		Section Lines
SPREAD BREAK		

500 250 0 500 1,000 Feet

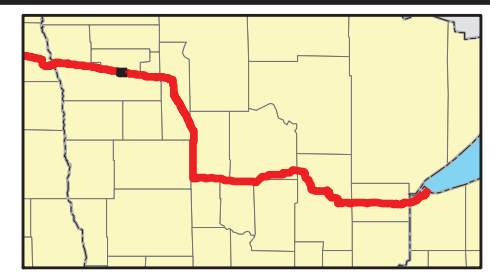
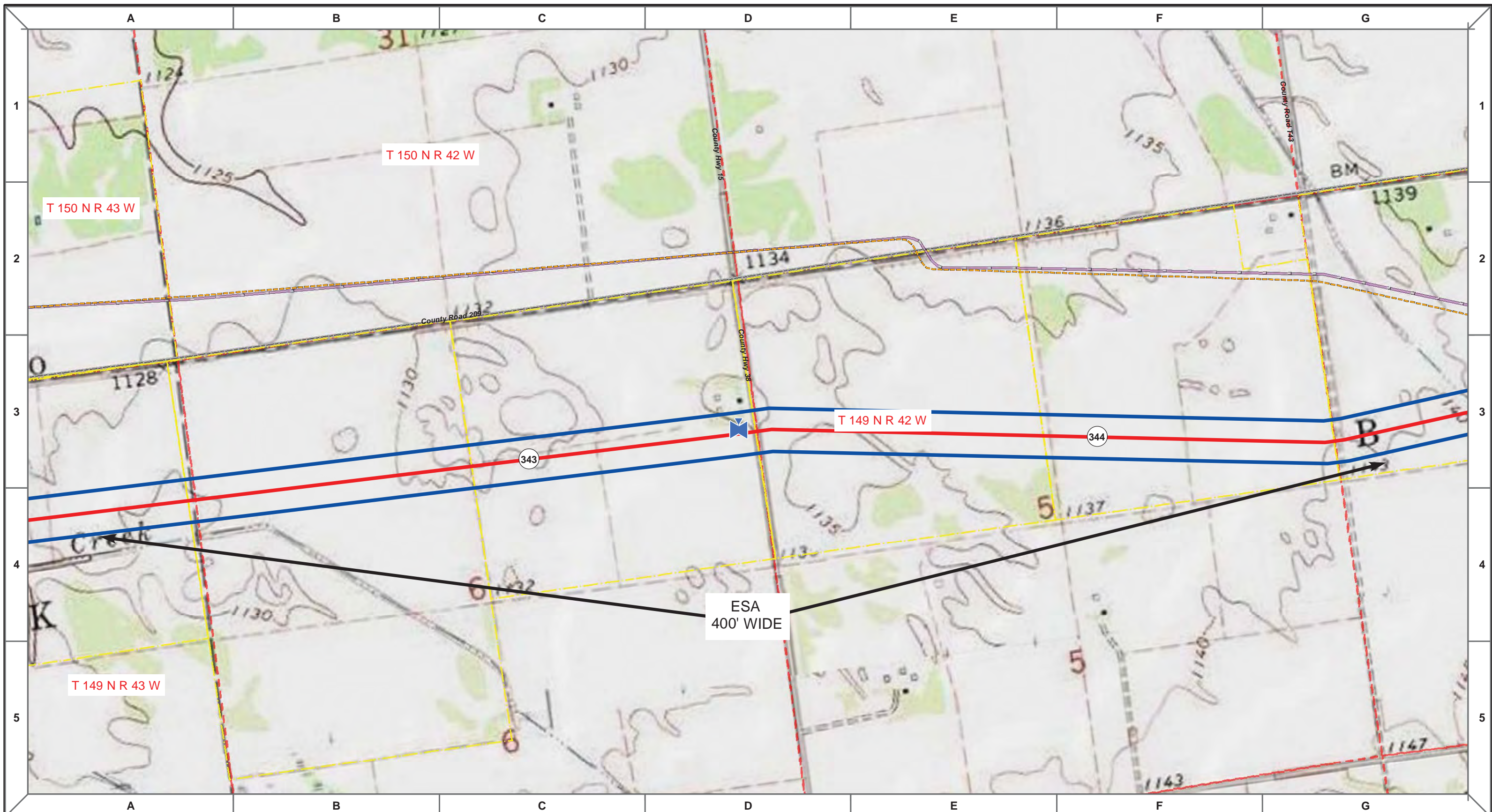
MLB		10/10/13	0		PUC Submittal
DRAWN	CHECKED	APPROVED	DATE	REV NO.	DESCRIPTION

**PROPOSED SANDPIPER PIPELINE PROJECT**  
**ROUTE MAP**  
**Red Lake & Polk County, MN**

DRAWN: MLB	CHECKED: --
DATE: Oct 18, 2013	SCALE: AS SHOWN

Spread:5 Map: 20 of 128





Proposed Pipeline - Sandpiper	Milepost - Sandpiper	Tract Boundary
Existing Enbridge Pipelines	Potential Block Valve	Facility Boundary
Foreign Pipes	Environmental Survey Area (ESA)	Previously Sited Facility Boundary
Transmission Lines		Section Lines
SPREAD BREAK		

MLB	DATE	REV NO.	DESCRIPTION
	10/10/13	0	PUC Submittal

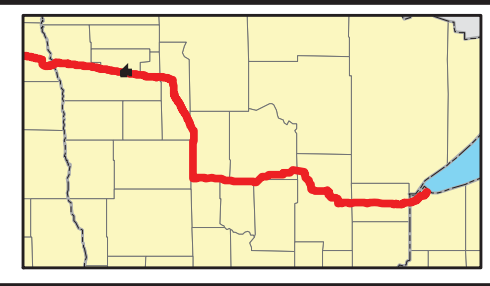
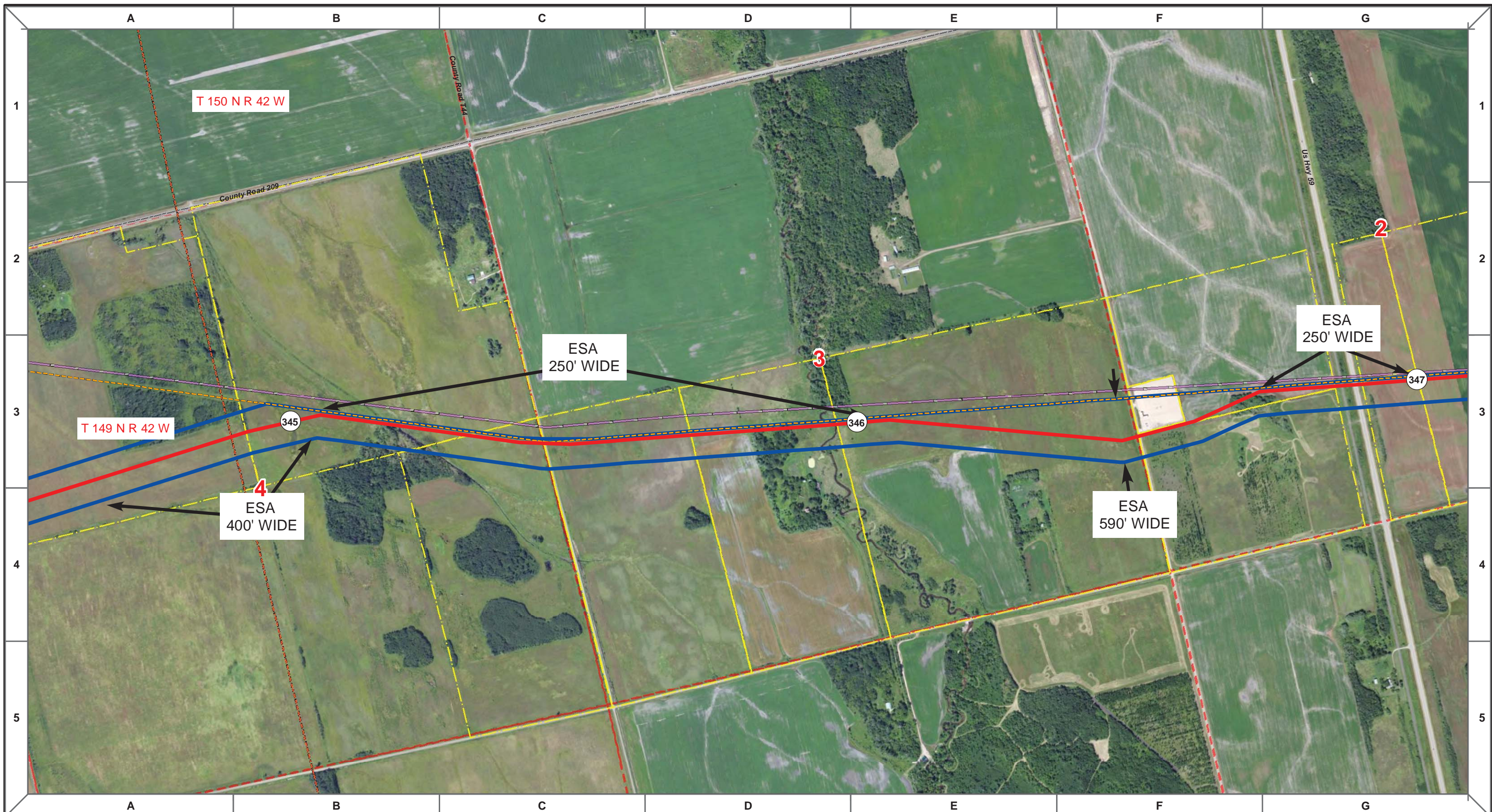
**ENBRIDGE** PIPELINES (NORTH DAKOTA) LLC

**PROPOSED SANDPIPER  
PIPELINE PROJECT  
ROUTE MAP  
Red Lake & Polk County, MN**

DRAWN: <u>MLB</u>	CHECKED: <u>-</u>
DATE: <u>Oct 18, 2013</u>	SCALE: <u>AS SHOWN</u>

Spread:5
Map: 20 of 128





Proposed Pipeline - Sandpiper	Milepost - Sandpiper	Tract Boundary
Existing Enbridge Pipelines	Potential Block Valve	Facility Boundary
Foreign Pipes	Environmental Survey Area (ESA)	Previously Sited Facility Boundary
Transmission Lines		Section Lines
SPREAD BREAK		

MLB		10/10/13	0						
DRAWN	CHECKED	APPROVED	DATE	REV NO.	DESCRIPTION				

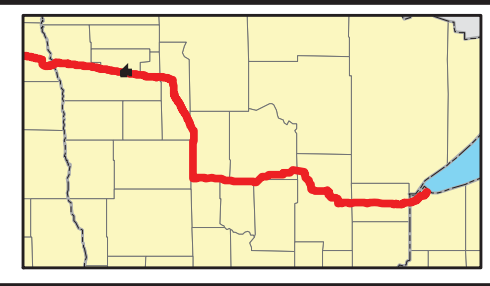
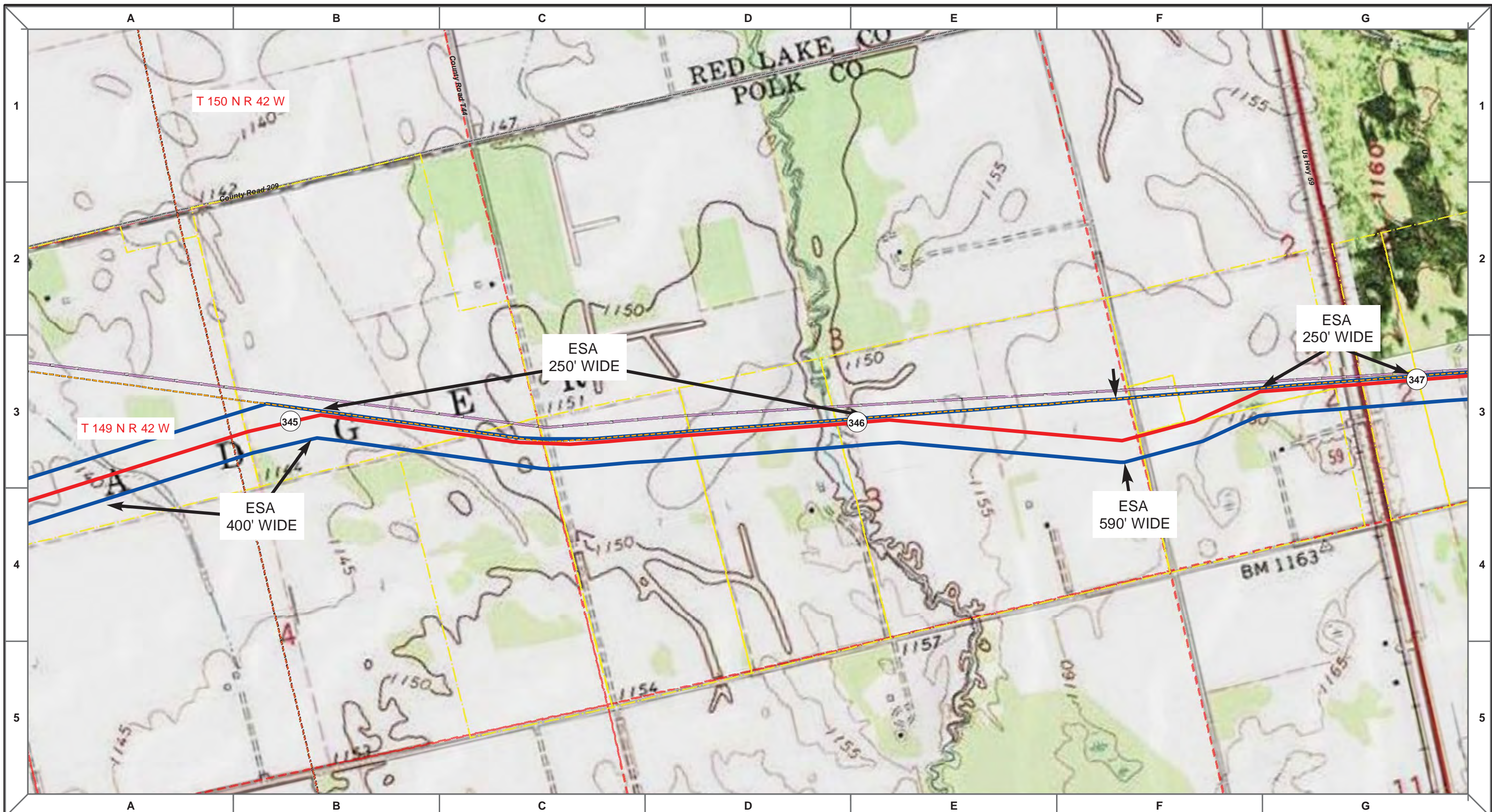
**ENBRIDGE PIPELINES (NORTH DAKOTA) LLC**

**PROPOSED SANDPIPER PIPELINE PROJECT**  
**ROUTE MAP**  
**Red Lake & Polk County, MN**

<small>DRAWN:</small> MLB	<small>CHECKED:</small> --
<small>DATE:</small> Oct 18, 2013	<small>SCALE:</small> AS SHOWN

Spread:5
Map: 21 of 128





Proposed Pipeline - Sandpiper	Milepost - Sandpiper	Tract Boundary
Existing Enbridge Pipelines	Potential Block Valve	Facility Boundary
Foreign Pipes	Environmental Survey Area (ESA)	Previously Sited Facility Boundary
Transmission Lines		Section Lines
SPREAD BREAK		

500 250 0 500 1,000 Feet

MLB	DATE	REV NO.	DESCRIPTION
	10/10/13	0	PUC Submittal

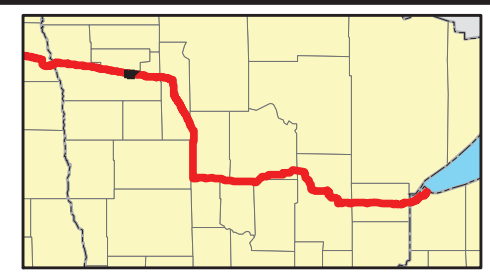
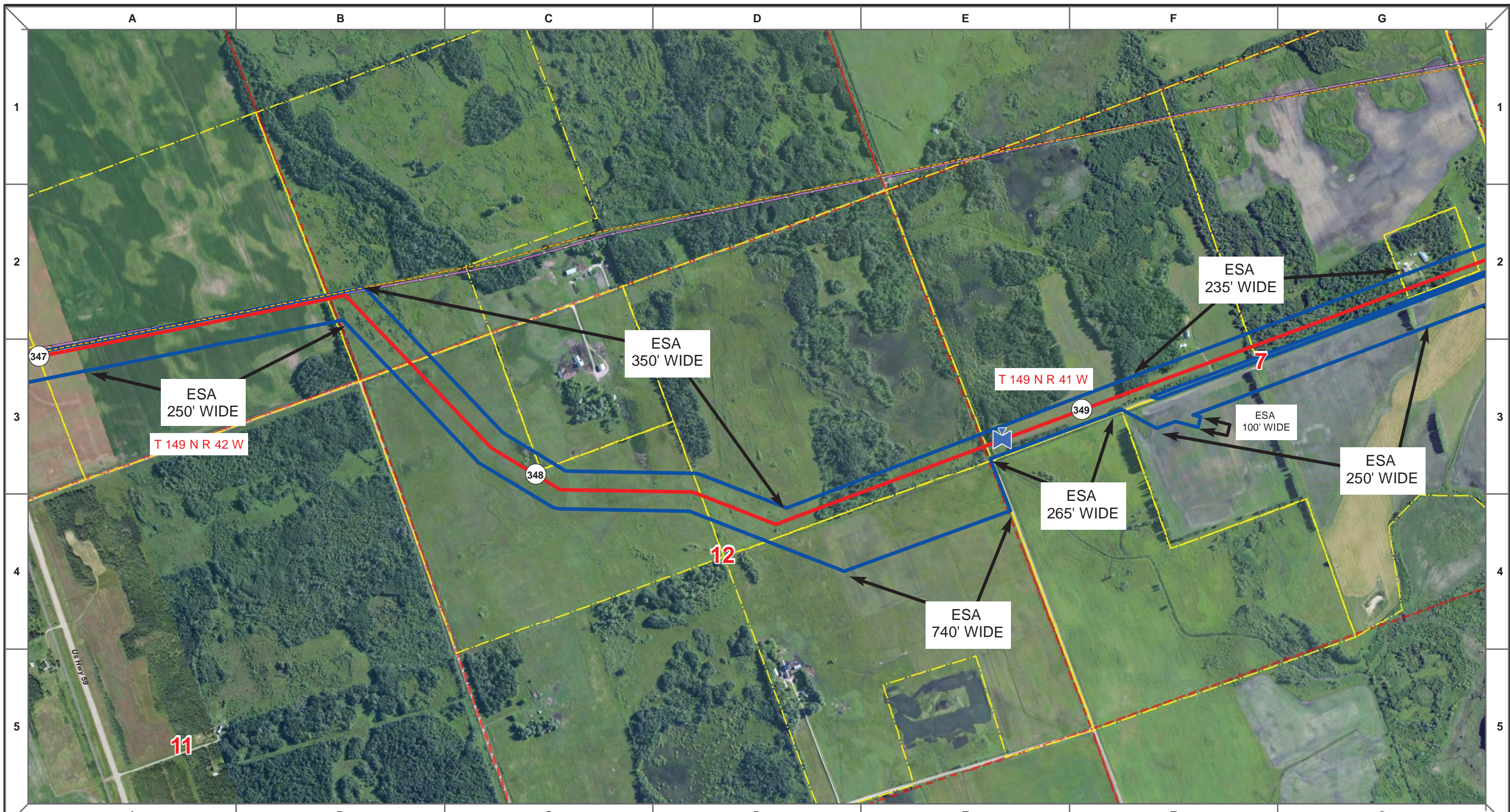
**ENBRIDGE PIPELINES (NORTH DAKOTA) LLC**

**PROPOSED SANDPIPER PIPELINE PROJECT**  
**ROUTE MAP**  
 Red Lake & Polk County, MN

DRAWN: <b>MLB</b>	CHECKED: <b>-</b>
DATE: <b>Oct 18, 2013</b>	SCALE: <b>AS SHOWN</b>

Spread:5 Map: 21 of 128





- Proposed Pipeline - Sandpiper
- Existing Enbridge Pipelines
- Foreign Pipes
- Transmission Lines
- SPREAD BREAK
- 1 Milepost - Sandpiper
- Potential Block Valve
- Environmental Survey Area (ESA)
- Tract Boundary
- Facility Boundary
- Previously Sited Facility Boundary
- Section Lines

MLB	10/10/13	0	PUC Submittal
DRAWN	CHECKED	APPROVED	DESCRIPTION

**ENBRIDGE PIPELINES (NORTH DAKOTA) LLC**

**PROPOSED SANDPIPER PIPELINE PROJECT  
ROUTE MAP  
Polk County, MN**

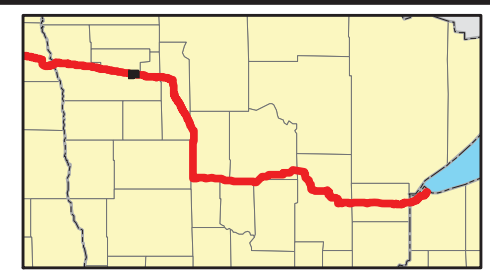
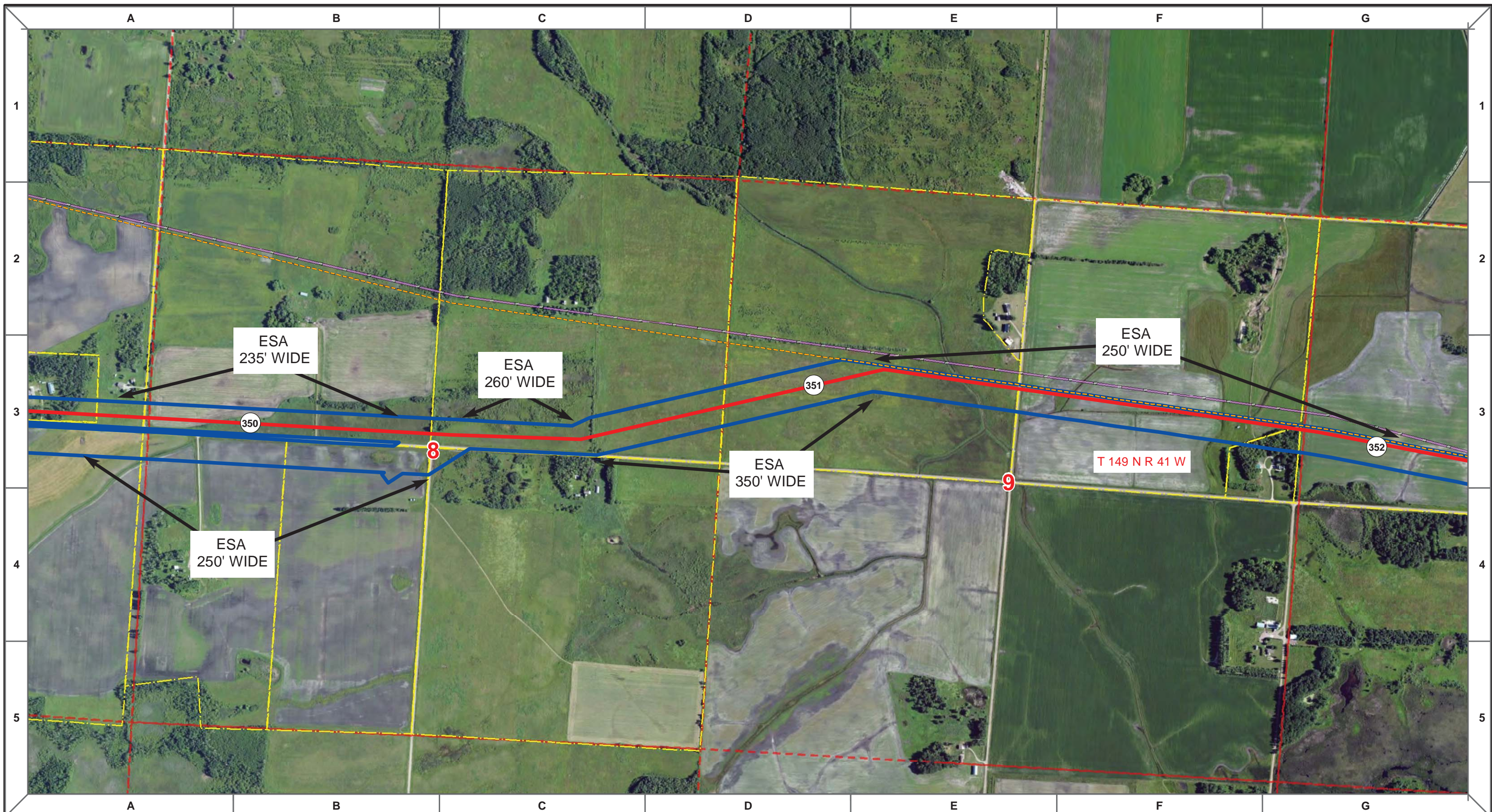
DRAWN: <i>MLB</i>	CHECKED: <i>--</i>
DATE: Oct 18, 2013	SCALE: AS SHOWN

Spread:5Map: 22 of 128









	Proposed Pipeline - Sandpiper		Milepost - Sandpiper		Tract Boundary
	Existing Enbridge Pipelines		Potential Block Valve		Facility Boundary
	Foreign Pipes		Environmental Survey Area (ESA)		Previously Sited Facility Boundary
	Transmission Lines				Section Lines
	SPREAD BREAK				

500 250 0 500 1,000 Feet

MLB		10/10/13	0		
DRAWN	CHECKED	APPROVED	DATE	REV NO.	DESCRIPTION

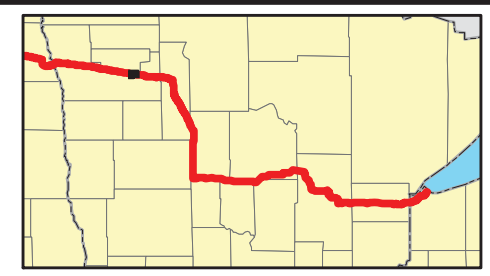
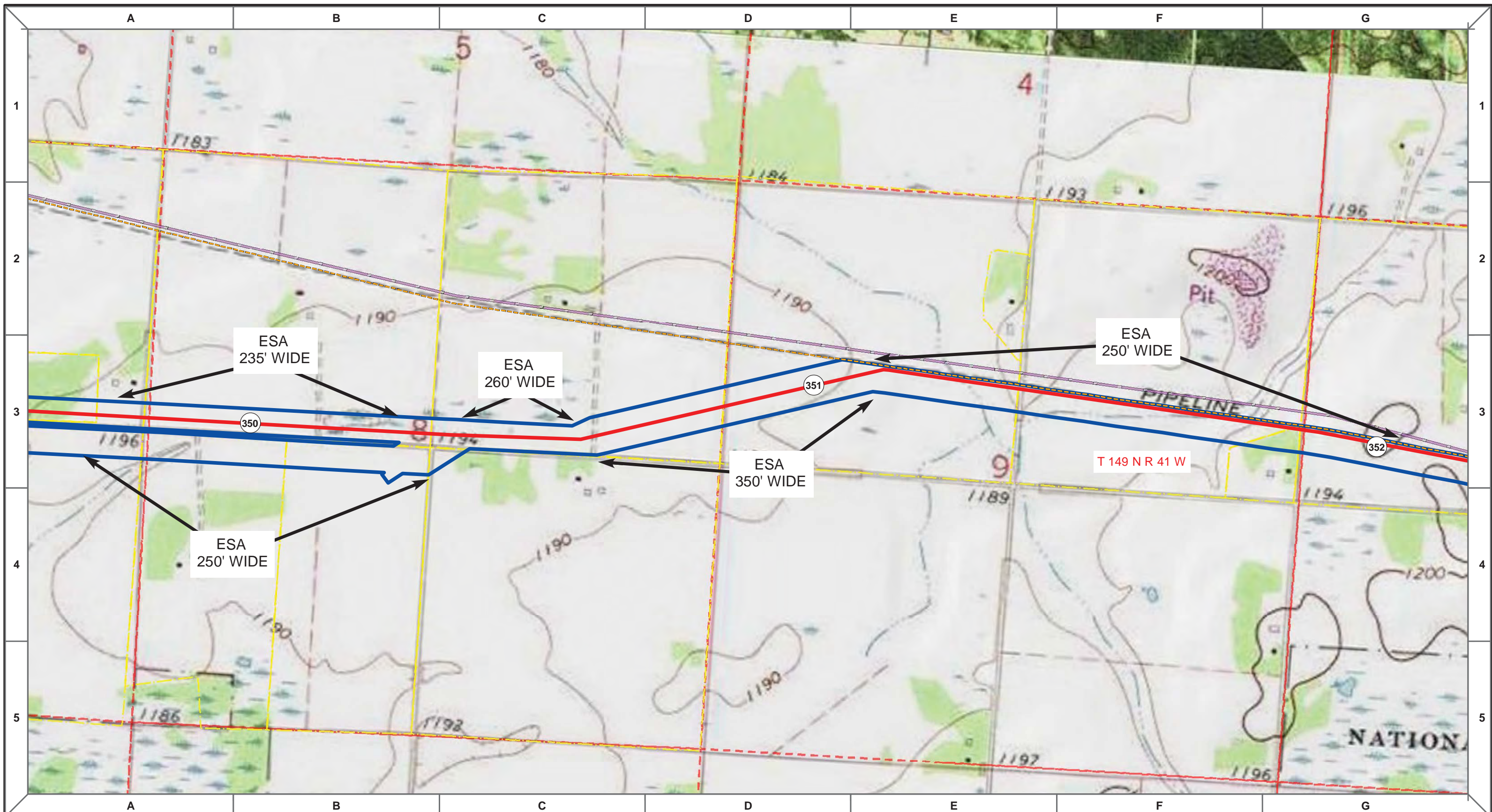
**ENBRIDGE PIPELINES (NORTH DAKOTA) LLC**

**PROPOSED SANDPIPER PIPELINE PROJECT**  
**ROUTE MAP**  
**Polk County, MN**

DRAWN: <i>MLB</i>	CHECKED: <i>--</i>
DATE: <i>Oct 18, 2013</i>	SCALE: <i>AS SHOWN</i>

Spread:5 Map: 23 of 128





Proposed Pipeline - Sandpiper	Milepost - Sandpiper	Tract Boundary
Existing Enbridge Pipelines	Potential Block Valve	Facility Boundary
Foreign Pipes	Environmental Survey Area (ESA)	Previously Sited Facility Boundary
Transmission Lines		Section Lines
SPREAD BREAK		

500 250 0 500 1,000 Feet

MLB	DATE	REV NO.	DESCRIPTION
	10/10/13	0	PUC Submittal

**ENBRIDGE PIPELINES (NORTH DAKOTA) LLC**

**PROPOSED SANDPIPER PIPELINE PROJECT  
ROUTE MAP  
Polk County, MN**

<small>DRAWN:</small> MLB	<small>CHECKED:</small> --
<small>DATE:</small> Oct 18, 2013	<small>SCALE:</small> AS SHOWN

Spread:5 Map: 23 of 128