

Data Source: Geronimo Energy, USGS
 Service Layer Credits: Copyright: © 2013 National Geographic Society, i-cubed

Figure 1
Project Location
Blazing Star Wind Farm 2
Lincoln County, MN
 44.460125, -96.336861

- Project Area Boundary
- County Boundary
- City/Township

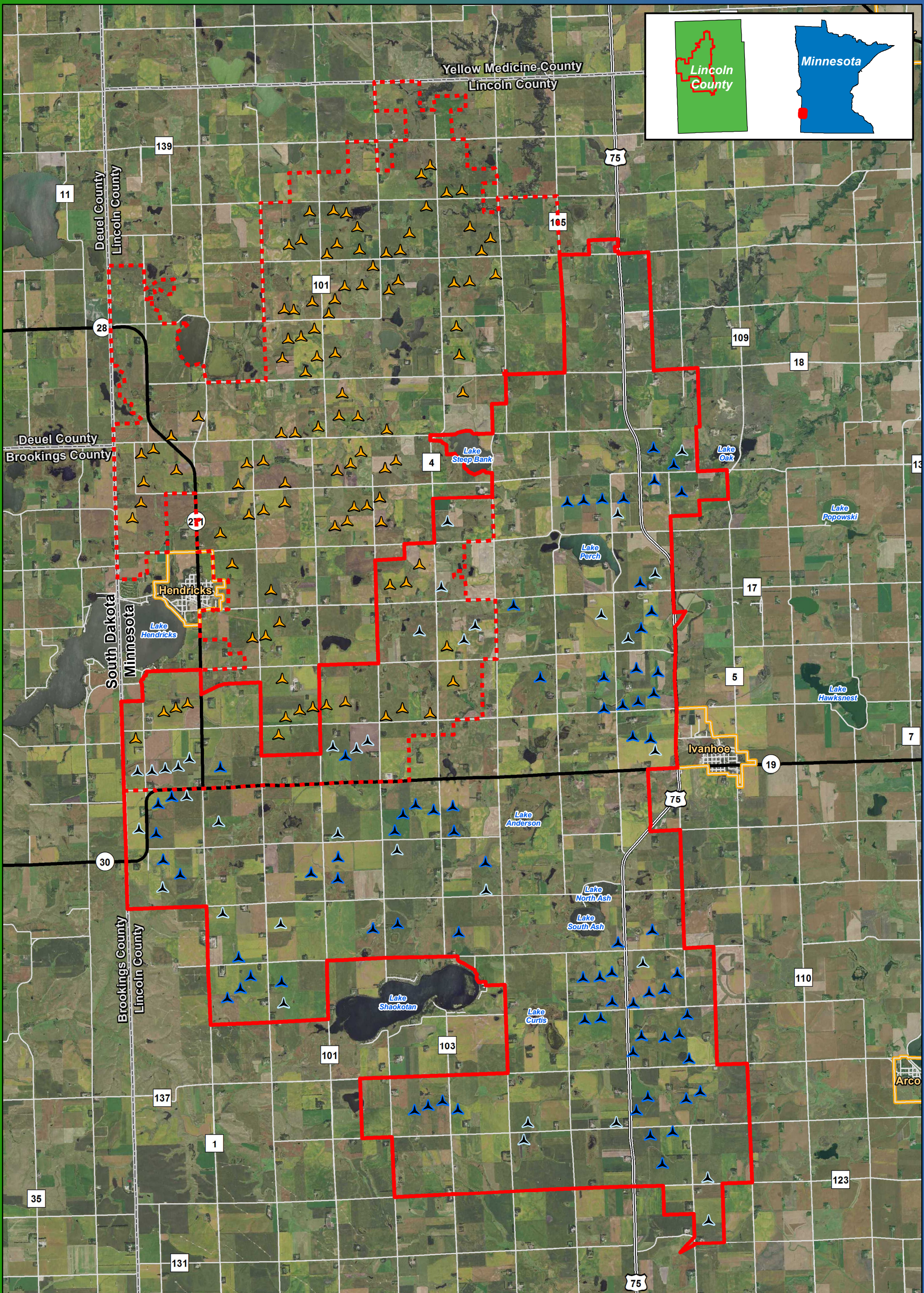


Figure 2a
Blazing Star Project
Comparison
Gamesa G126

Blazing Star Wind Farm 2
Lincoln County, MN
 44.460125, -96.336861

BLAZING STAR 2
WIND FARM
 Lincoln County, MN

0 0.75 1.5 3
 Miles

Imagery Source: 2015 Color FSA
 Data Source: Geronimo Energy, MN DNR, USGS, Census

- Blazing Star Permitted Turbine (V110)
- Blazing Star 2 Preliminary Turbine Location
- Alternate Turbine Location
- Blazing Star Project Boundary
- Blazing Star 2 Project Boundary

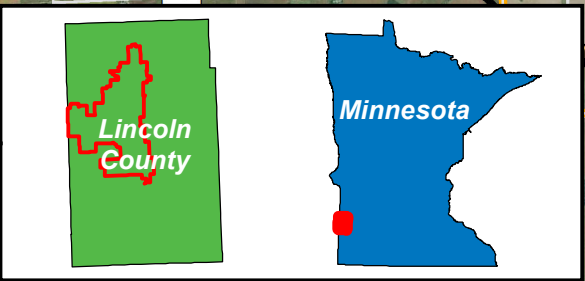
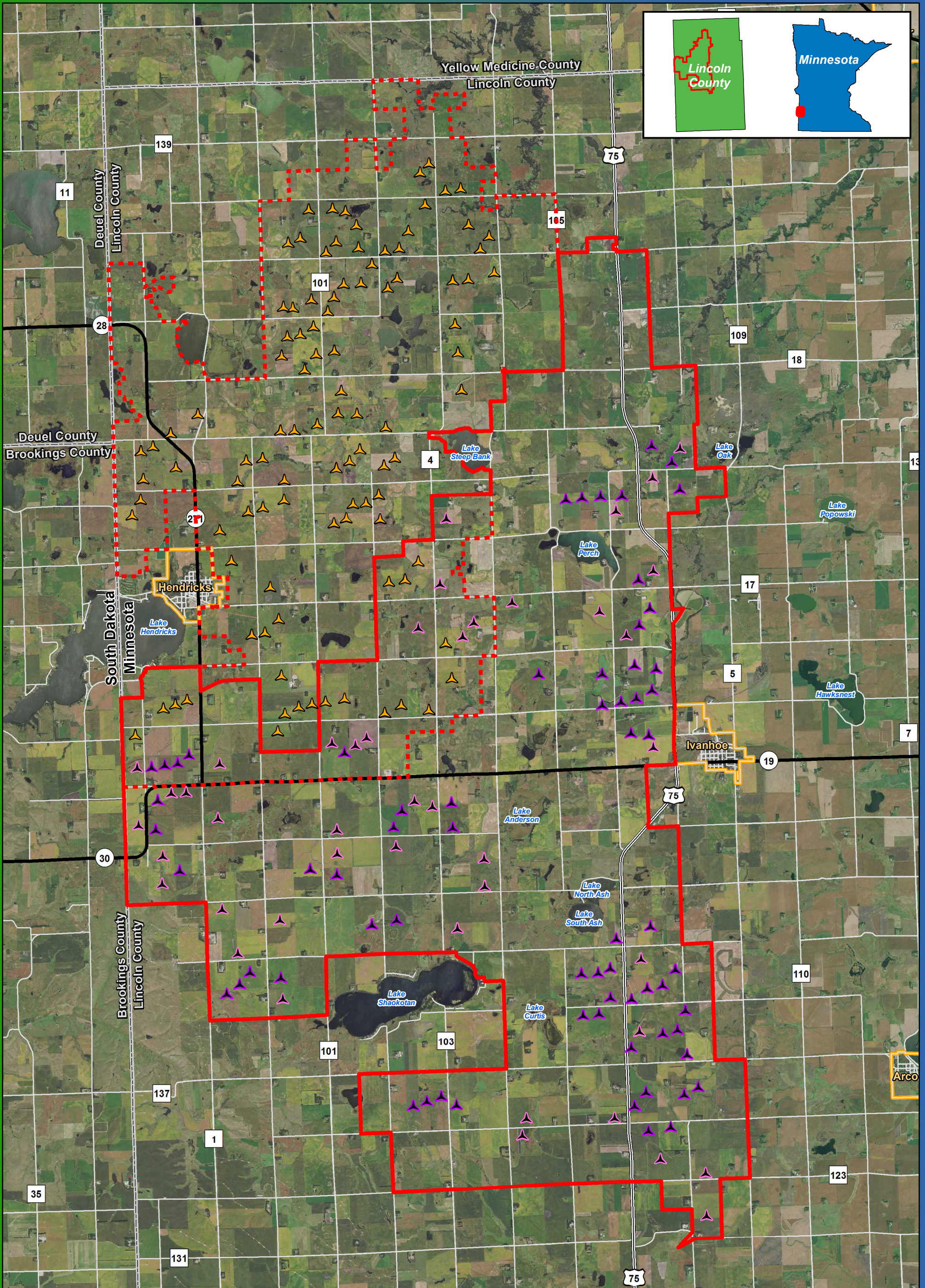


Figure 2b
Blazing Star Project
Comparison
Acciona 3.0-132

Blazing Star Wind Farm 2
Lincoln County, MN
44.460125, -96.336861

- Blazing Star Permitted Turbine (V110)
- Blazing Star Project Boundary
- Blazing Star 2 Preliminary Turbine Location
- Blazing Star 2 Alternate Turbine Location
- Blazing Star 2 Project Boundary

BLAZING STAR 2
WIND FARM
 Lincoln County, MN

0 0.75 1.5 3
 Miles

Imagery Source: 2015 Color FSA
 Data Source: Geronimo Energy, MN DNR, USGS, Census

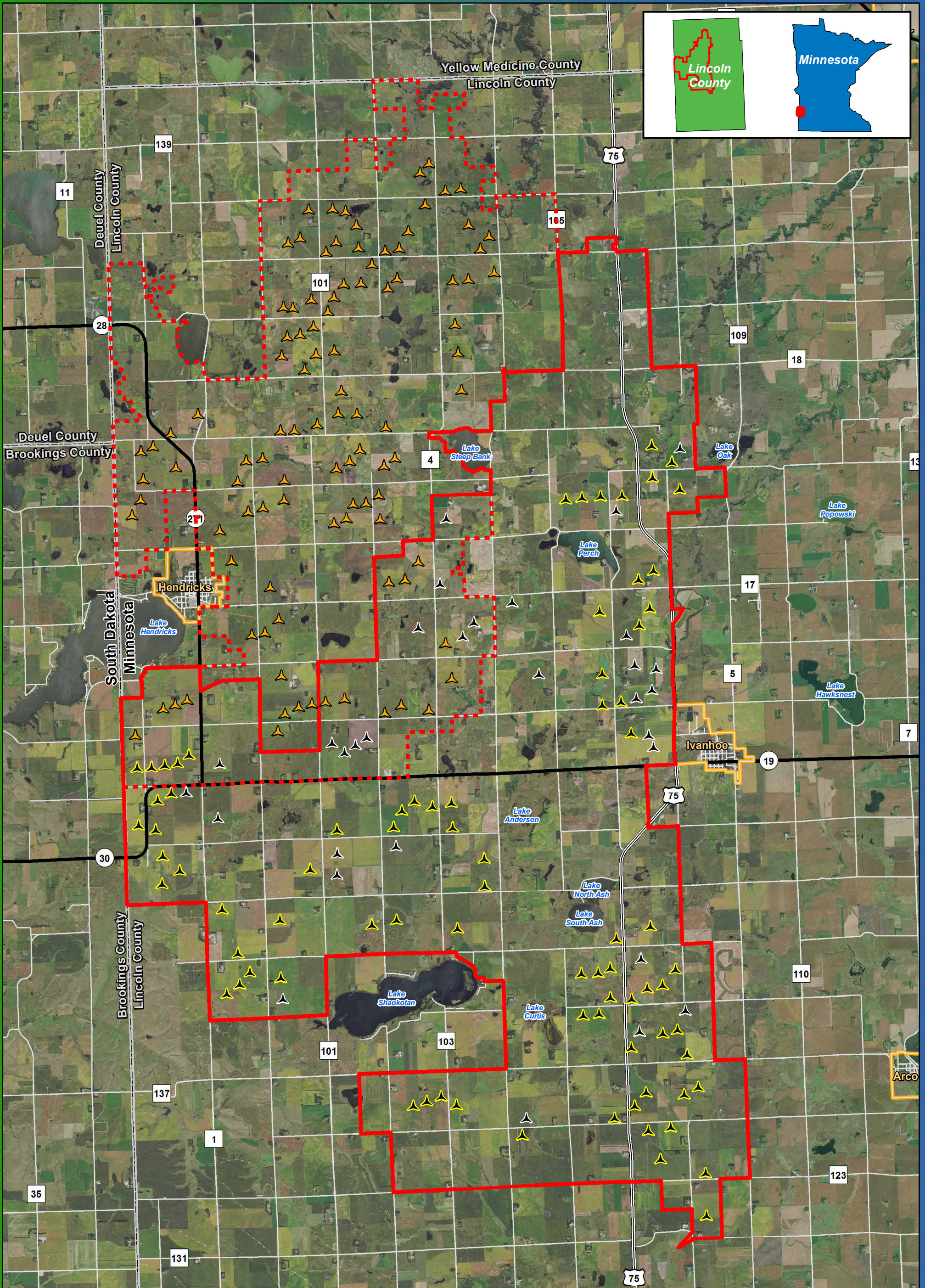


Figure 2c
Blazing Star Project
Comparison
GE 2.5-116

Blazing Star Wind Farm 2
Lincoln County, MN
44.460125, -96.336861

▲ Blazing Star Permitted Turbine (V110)

⋯ Blazing Star Project Boundary

Blazing Star 2
 ▲ Preliminary Turbine Location

▭ Blazing Star 2 Project Boundary

▲ Alternate Turbine Location



Imagery Source: 2015 Color FSA
 Data Source: Geronimo Energy, MN DNR, USGS, Census

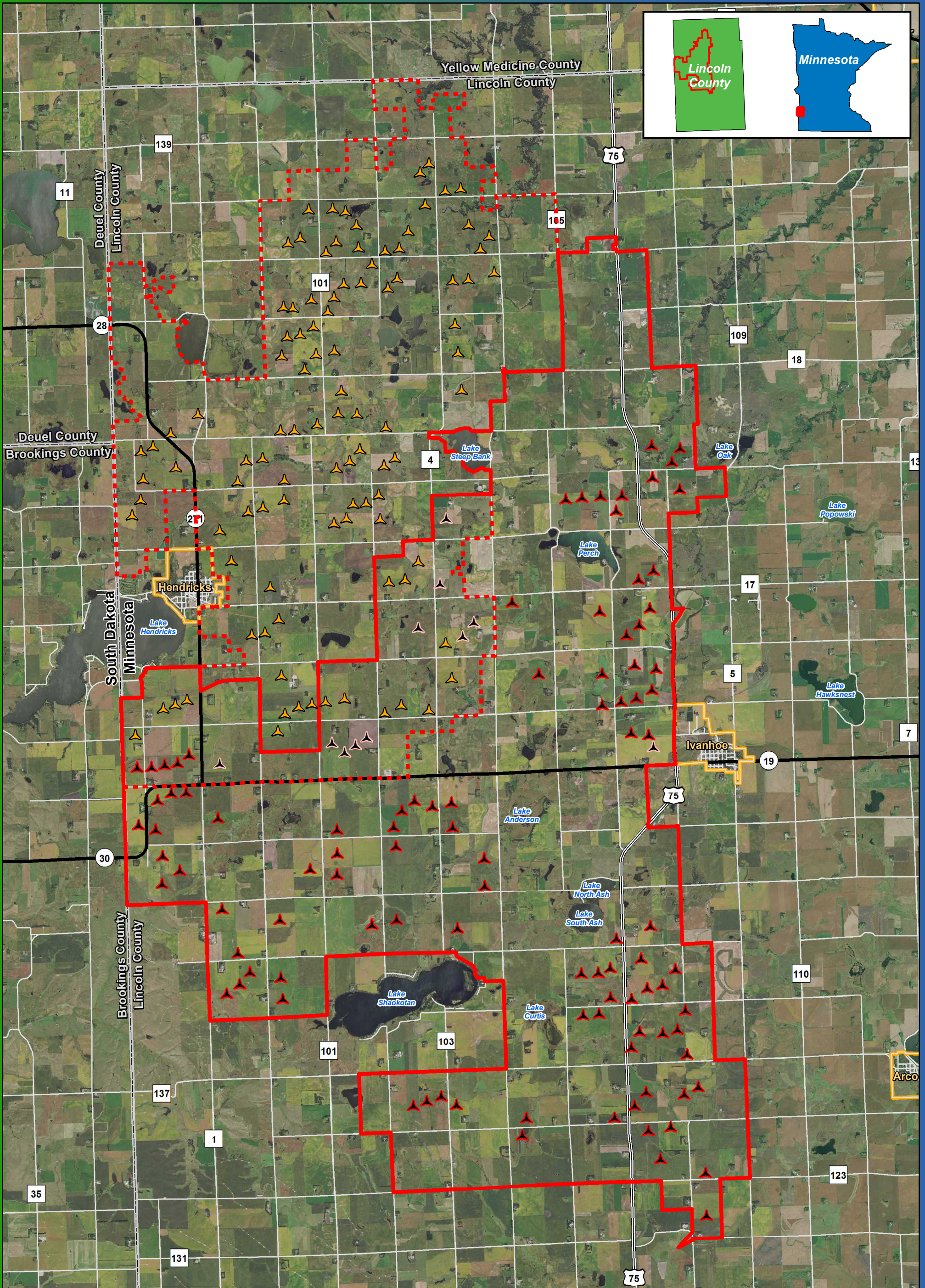


Figure 2d
Blazing Star Project
Comparison
Vestas V110

Blazing Star Wind Farm 2
Lincoln County, MN
44.460125, -96.336861

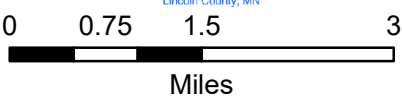
▲ Blazing Star Permitted Turbine (V110)

Blazing Star 2
 ▲ Preliminary Turbine Location

▲ Alternate Turbine Location

--- Blazing Star Project Boundary

▭ Blazing Star 2 Project Boundary



Imagery Source: 2015 Color FSA
 Data Source: Geronimo Energy, MN DNR, USGS, Census

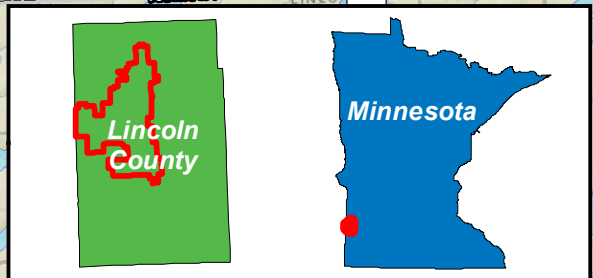
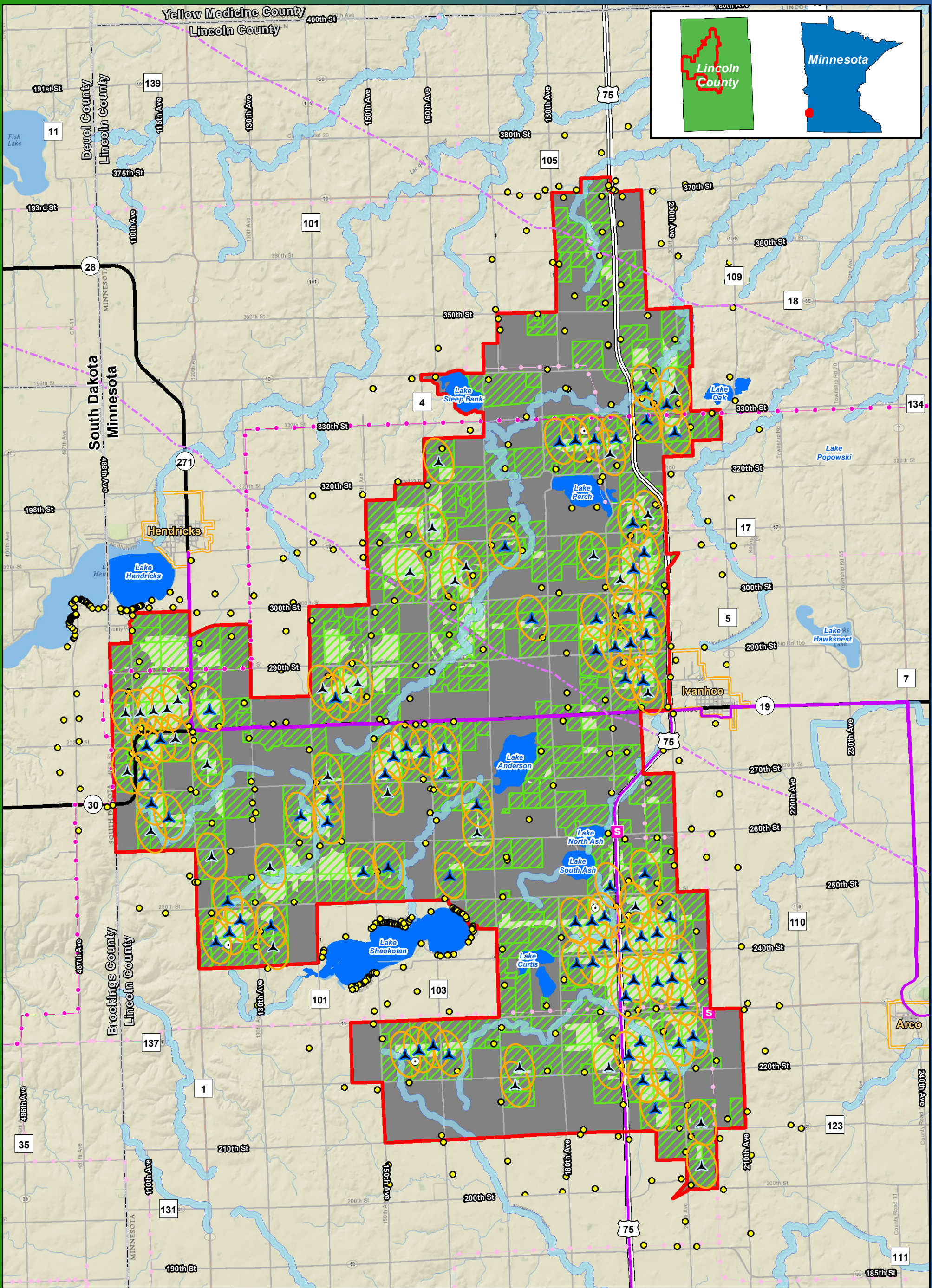
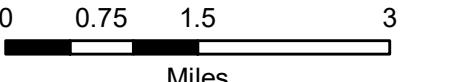


Figure 3a
Turbine Layout and
Constraints
Gamesa G126

Blazing Star Wind Farm 2
Lincoln County, MN

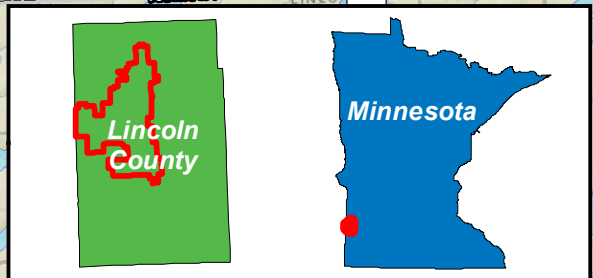
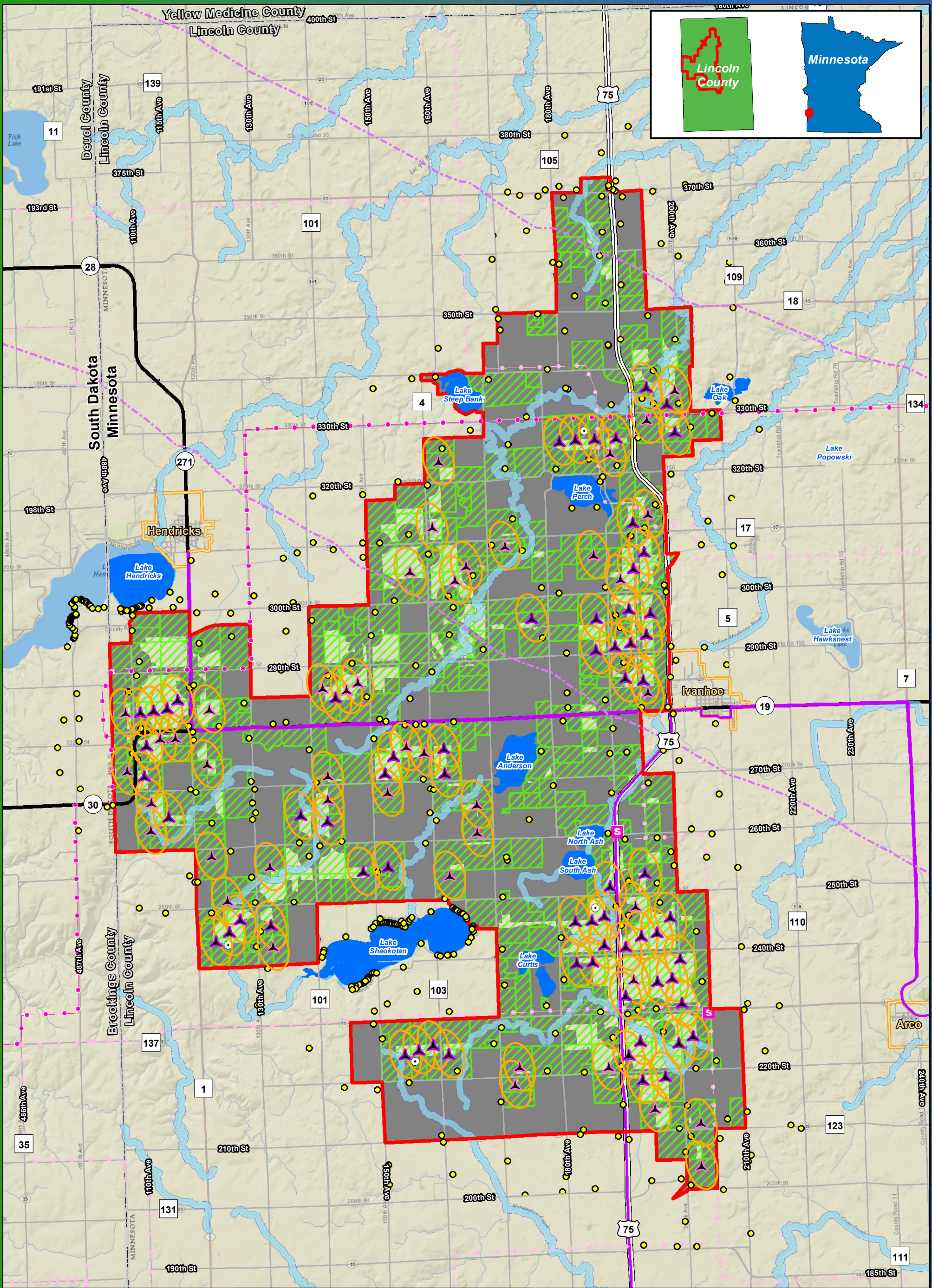
44.460125, -96.336861



Imagery Source: National Geographic World Map
 Data Source: Geronimo Energy, MN DNR, Census, Lincoln Co.

- | | |
|---|---|
| <ul style="list-style-type: none"> Preliminary Turbine Location Alternate Turbine Location Permanent Met Tower Residential Structures within 1 Mile (excluding cities of Hendricks and Ivanhoe) Project Area Boundary 3x5 Wind Access Buffer Setbacks Shoreland Management District | <p>Site Control Status</p> <ul style="list-style-type: none"> Participants Existing Substation Existing Transmission Line MVP 345kV Transmission Line Existing Pipeline Snowmobile Trail |
|---|---|

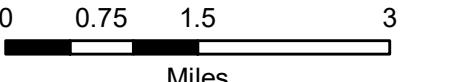
* Turbines are not to scale



**Figure 3b
Turbine Layout and
Constraints
Acciona 3.0-132**

**Blazing Star Wind Farm 2
Lincoln County, MN**

44.460125, -96.336861



Imagery Source: 2015 Color FSA
Data Source: Geronimo Energy, MN DNR, Census, Lincoln Co.

- | | |
|---|---|
| <ul style="list-style-type: none"> Preliminary Turbine Location Alternate Turbine Location Permanent Met Tower Residential Structures within 1 Mile (excluding cities of Hendricks and Ivanhoe) Project Area Boundary 3x5 Wind Access Buffer Setbacks Shoreland Management District | <p>Site Control Status</p> <ul style="list-style-type: none"> Participants Existing Substation Existing Transmission Line MVP 345kV Transmission Line Existing Pipeline Snowmobile Trail |
|---|---|

* Turbines are not to scale

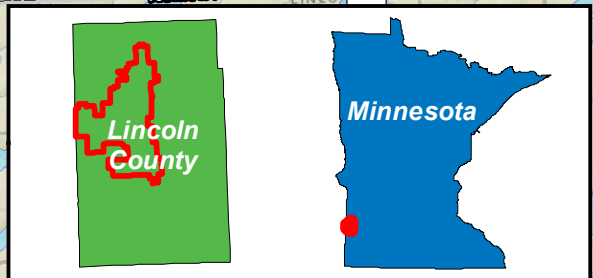
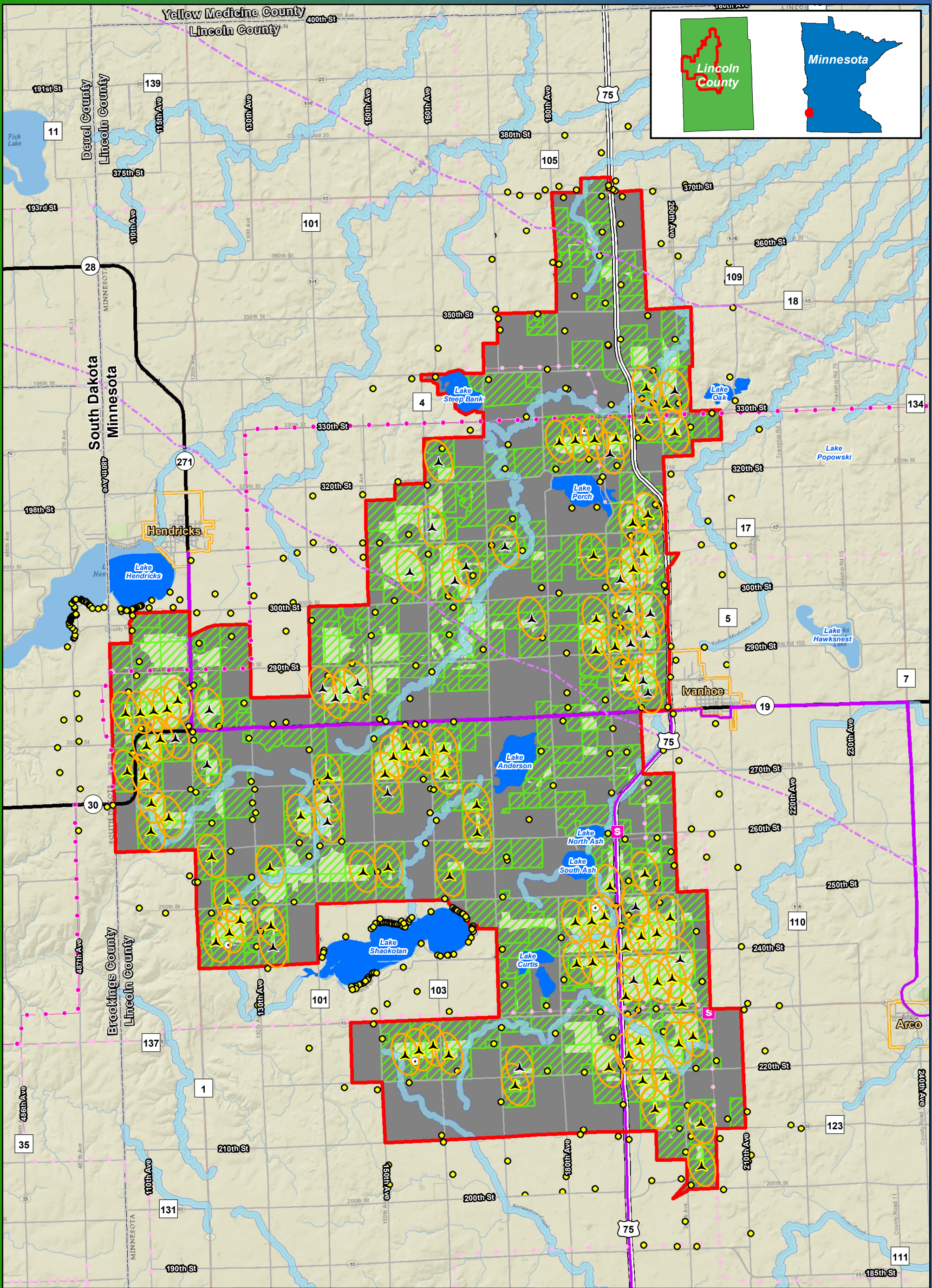


Figure 3c
Turbine Layout and
Constraints
GE 2.5-116

Blazing Star Wind Farm 2
Lincoln County, MN

44.460125, -96.336861

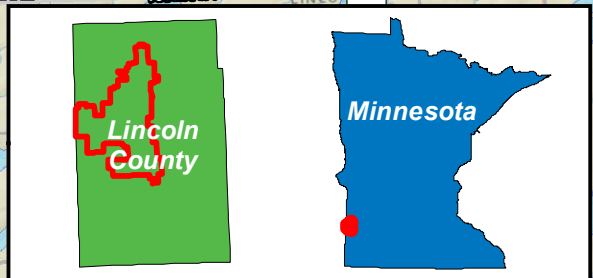
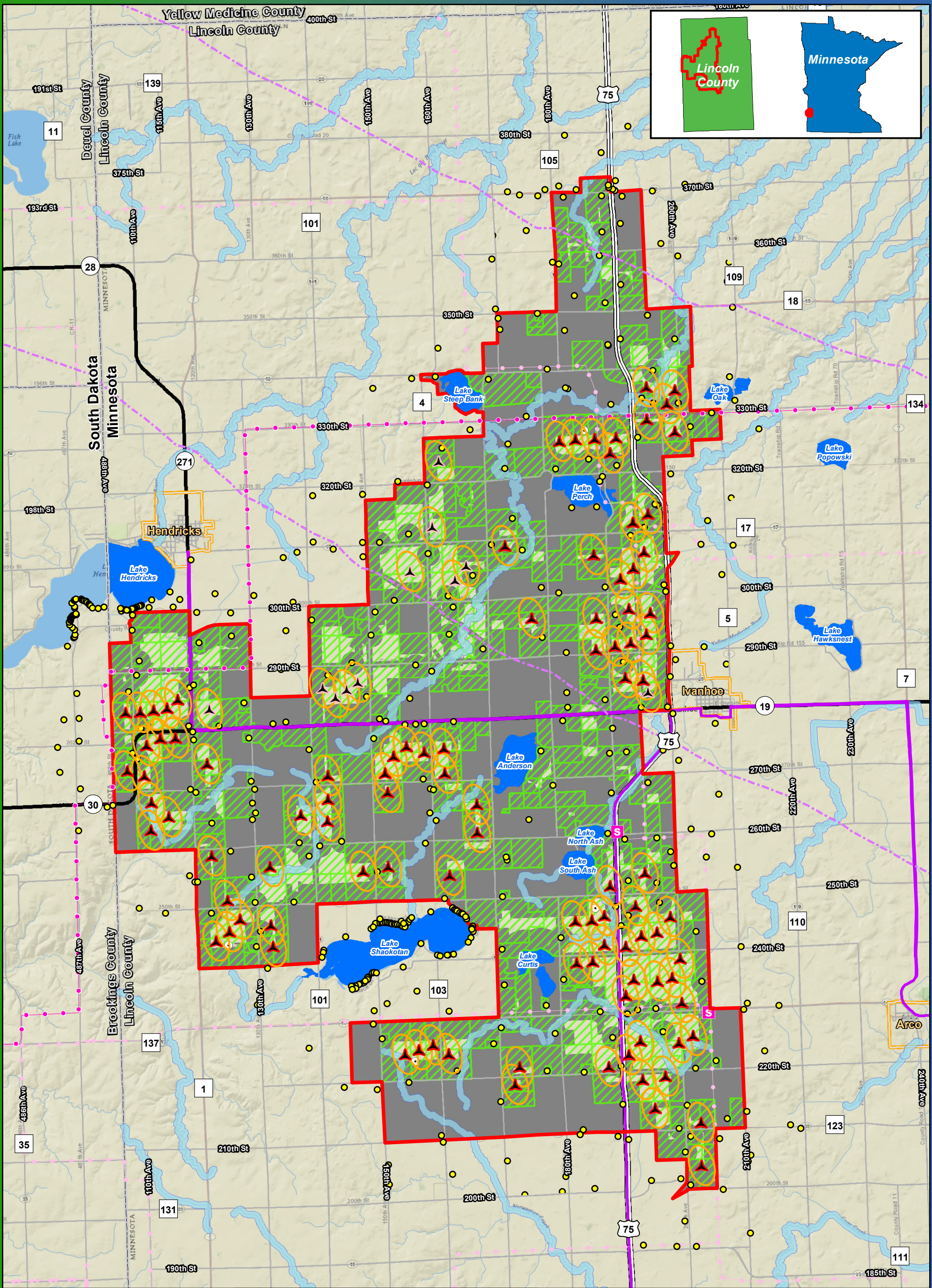
- | | |
|---|---|
| <ul style="list-style-type: none"> Preliminary Turbine Location Alternate Turbine Location Permanent Met Tower Residential Structures within 1 Mile (excluding cities of Hendricks and Ivanhoe) Project Area Boundary 3x5 Wind Access Buffer Setbacks Shoreland Management District | <p>Site Control Status</p> <ul style="list-style-type: none"> Participants Existing Substation Existing Transmission Line MVP 345kV Transmission Line Existing Pipeline Snowmobile Trail |
|---|---|

Lincoln County, MN

0 0.75 1.5 3
Miles

Imagery Source: National Geographic World Map
 Data Source: Geronimo Energy, MN DNR, Census, Lincoln Co.

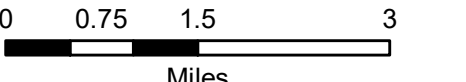
* Turbines are not to scale



**Figure 3d
Turbine Layout and
Constraints
Vestas V110**

**Blazing Star Wind Farm 2
Lincoln County, MN**

44.460125, -96.336861



Imagery Source: National Geographic World Map
Data Source: Geronimo Energy, MN DNR, Census, Lincoln Co.

- | | |
|--|-------------------------------|
| ▲ Preliminary Turbine Location | ▨ Participants |
| ▲ Alternate Turbine Location | S Existing Substation |
| ○ Permanent Met Tower | — Existing Transmission Line |
| ● Residential Structures within 1 Mile
(excluding cities of Hendricks and
Ivanhoe) | — MVP 345kV Transmission Line |
| ▭ Project Area Boundary | — Existing Pipeline |
| ○ 3x5 Wind Access Buffer | — Snowmobile Trail |
| ■ Setbacks | |
| ■ Shoreland Management District | |

* Turbines are not to scale

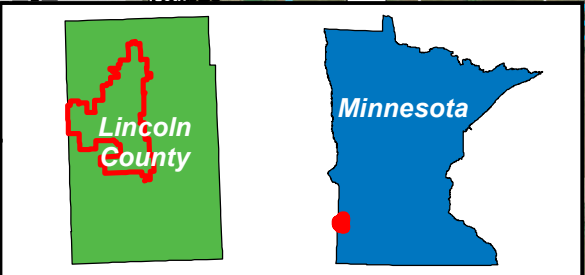
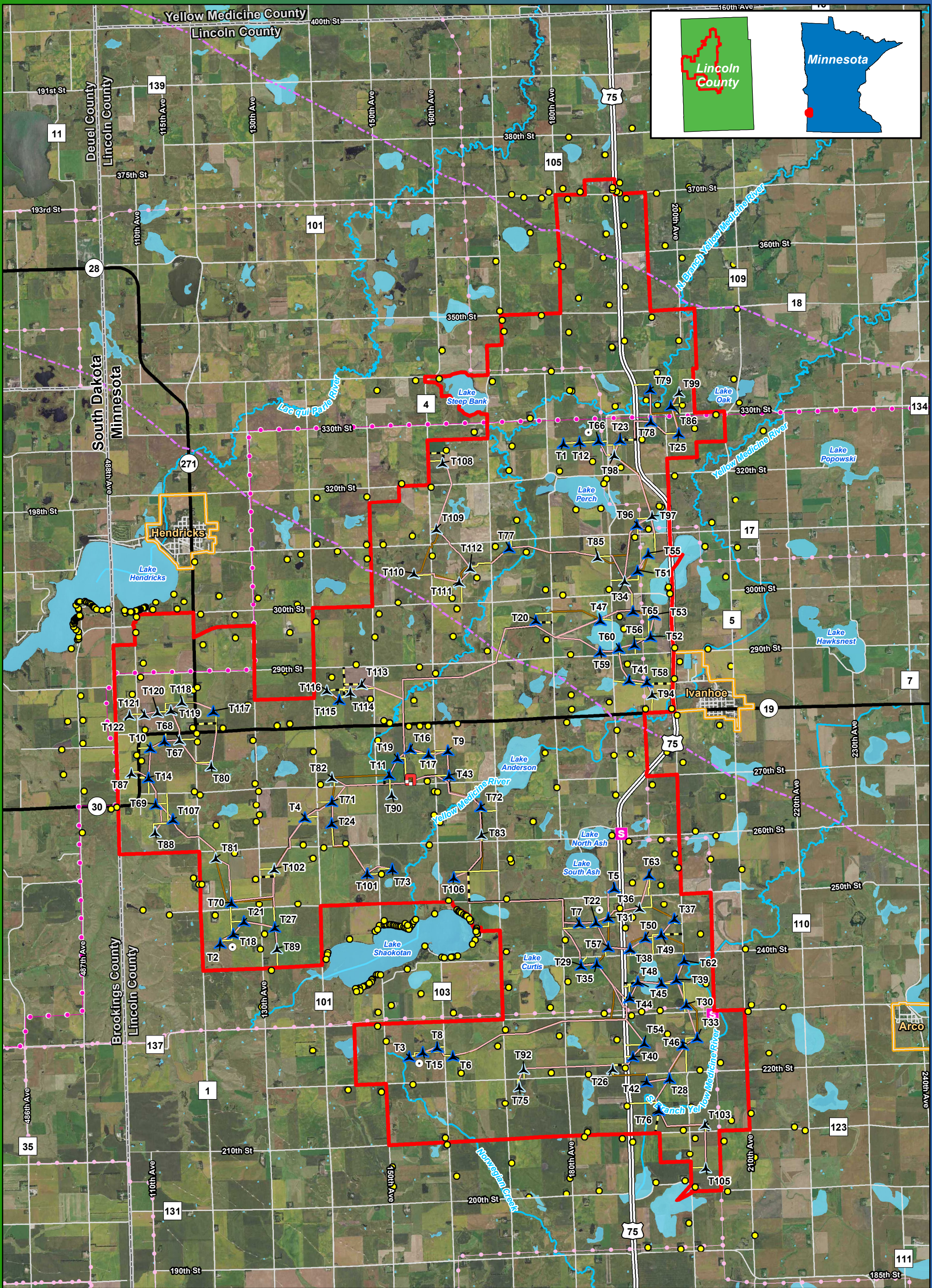


Figure 4a
Project Area and Facilities
Gamesa G126

Blazing Star Wind Farm 2
Lincoln County, MN

44.460125, -96.336861

- ▲ Preliminary Turbine Location
- ▲ Alternate Turbine Location
- Permanent Met Tower
- Residential Structures within 1 Mile (excluding cities of Hendricks and Ivanhoe)
- Project Area Boundary
- Access Road
- Alternate Access Road
- Collection Line
- Crane Path
- Project Substation
- 24k Stream or Ditch
- Lake, Pond or Reservoir
- Existing Substation
- Existing Transmission Line
- MVP 345kV Transmission Line
- Existing Pipeline

Lincoln County, MN

0 0.75 1.5 3
Miles

Imagery Source: 2015 Color FSA
 Data Source: Geronimo Energy, MN DNR, Census, Lincoln Co.

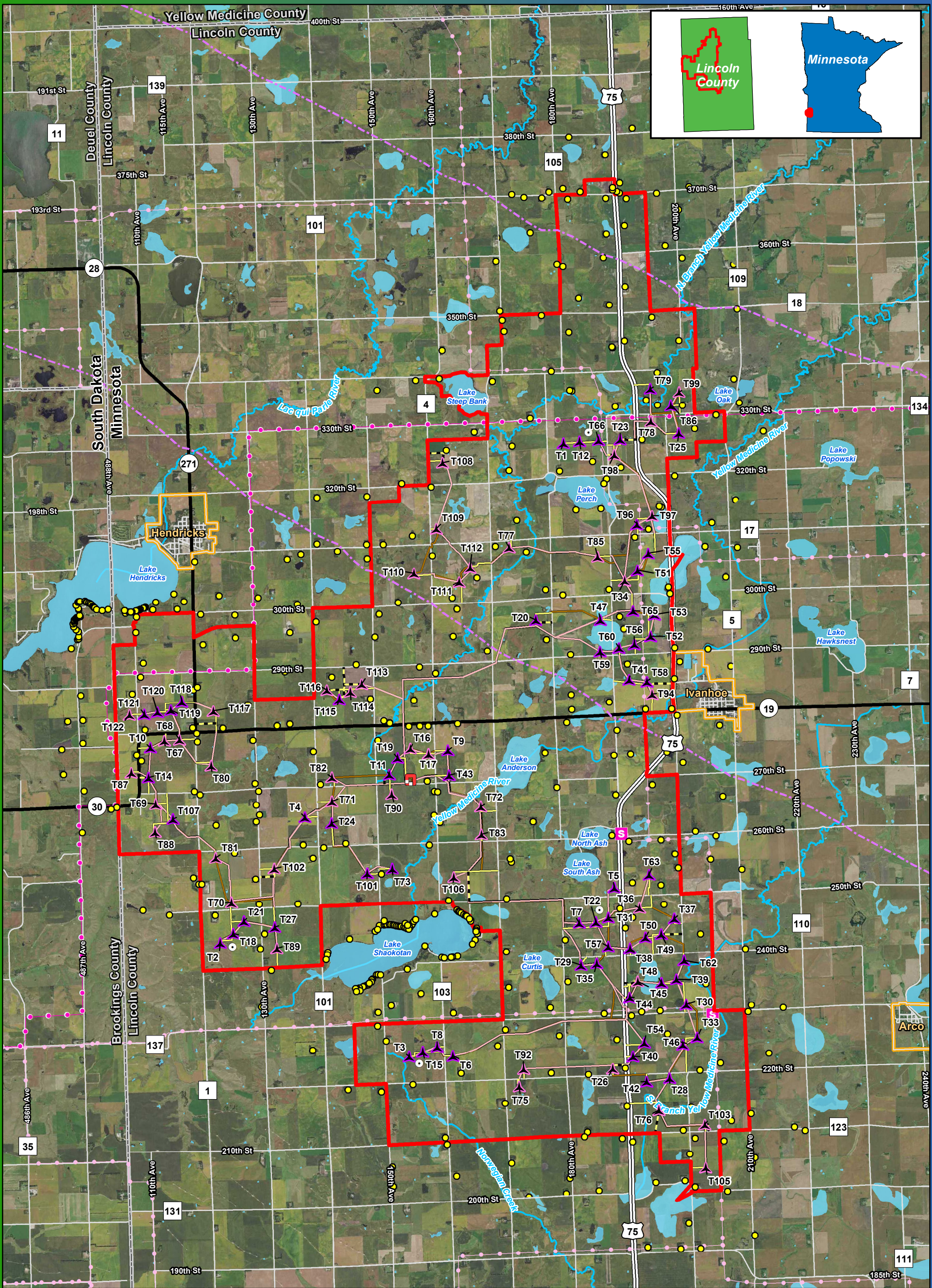


Figure 4b
Project Area and Facilities
Acciona 3.0-132

Blazing Star Wind Farm 2
Lincoln County, MN

44.460125, -96.336861

- Preliminary Turbine Location
- Alternate Turbine Location
- Permanent Met Tower
- Residential Structures within 1 Mile (excluding cities of Hendricks and Ivanhoe)
- Project Area Boundary
- Access Road
- Alternate Access Road
- Collection Line
- Crane Path
- Project Substation
- 24k Stream or Ditch
- Lake, Pond or Reservoir
- Existing Substation
- Existing Transmission Line
- MVP 345kV Transmission Line
- Existing Pipeline

Lincoln County, MN

Miles

Imagery Source: 2015 Color FSA
 Data Source: Geronimo Energy, MN DNR, Census, Lincoln Co.

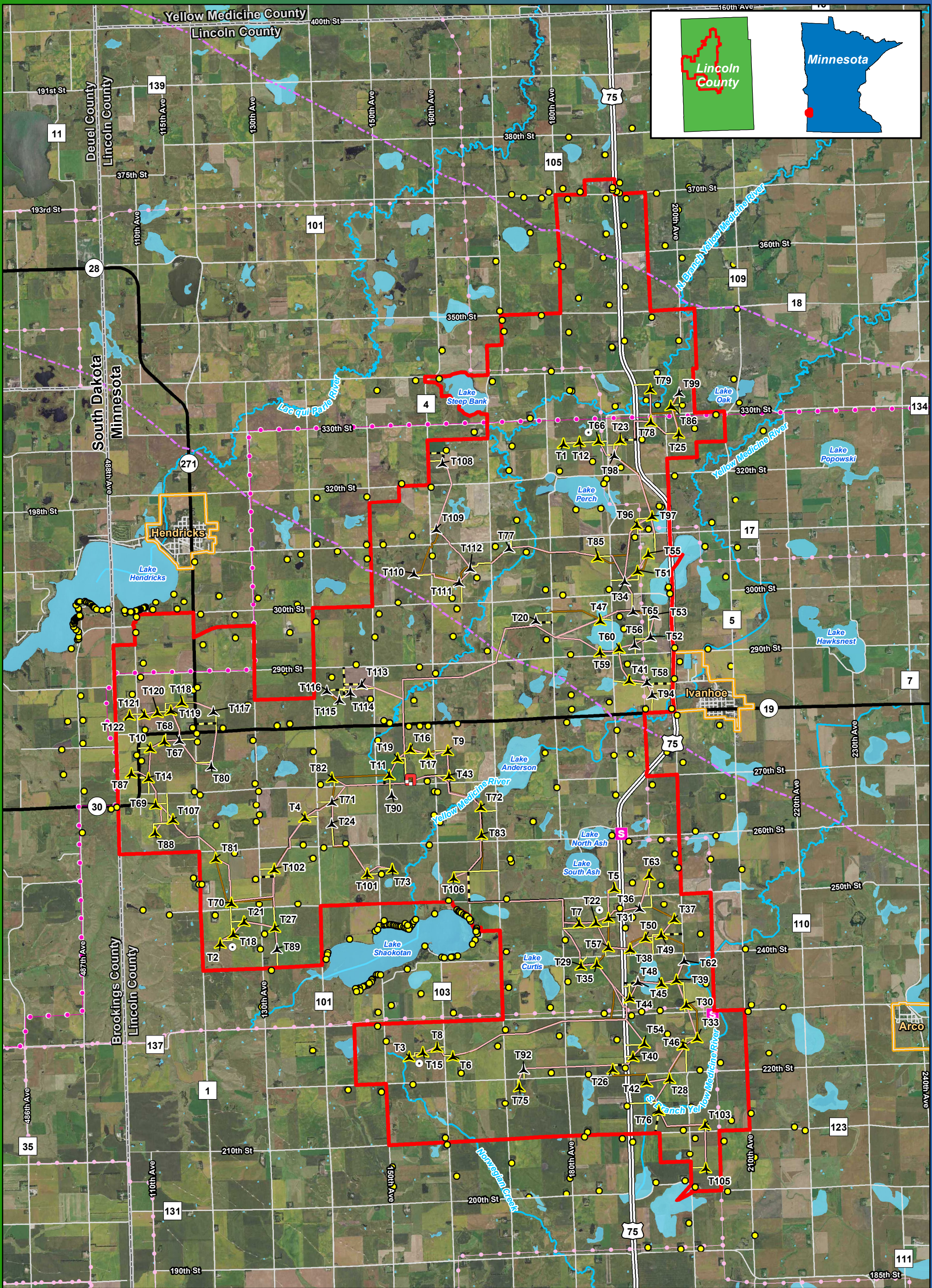
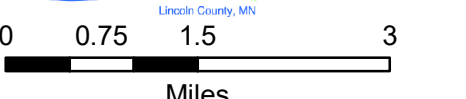


Figure 4c
Project Area and Facilities
GE 2.5-116

Blazing Star Wind Farm 2
Lincoln County, MN

44.460125, -96.336861

- Preliminary Turbine Location
- Alternate Turbine Location
- Permanent Met Tower
- Residential Structures within 1 Mile (excluding cities of Hendricks and Ivanhoe)
- Project Area Boundary
- Access Road
- Alternate Access Road
- Collection Line
- Crane Path
- Project Substation
- 24k Stream or Ditch
- Lake, Pond or Reservoir
- Existing Substation
- Existing Transmission Line
- MVP 345kV Transmission Line
- Existing Pipeline



Imagery Source: 2015 Color FSA
 Data Source: Geronimo Energy, MN DNR, Census, Lincoln Co.

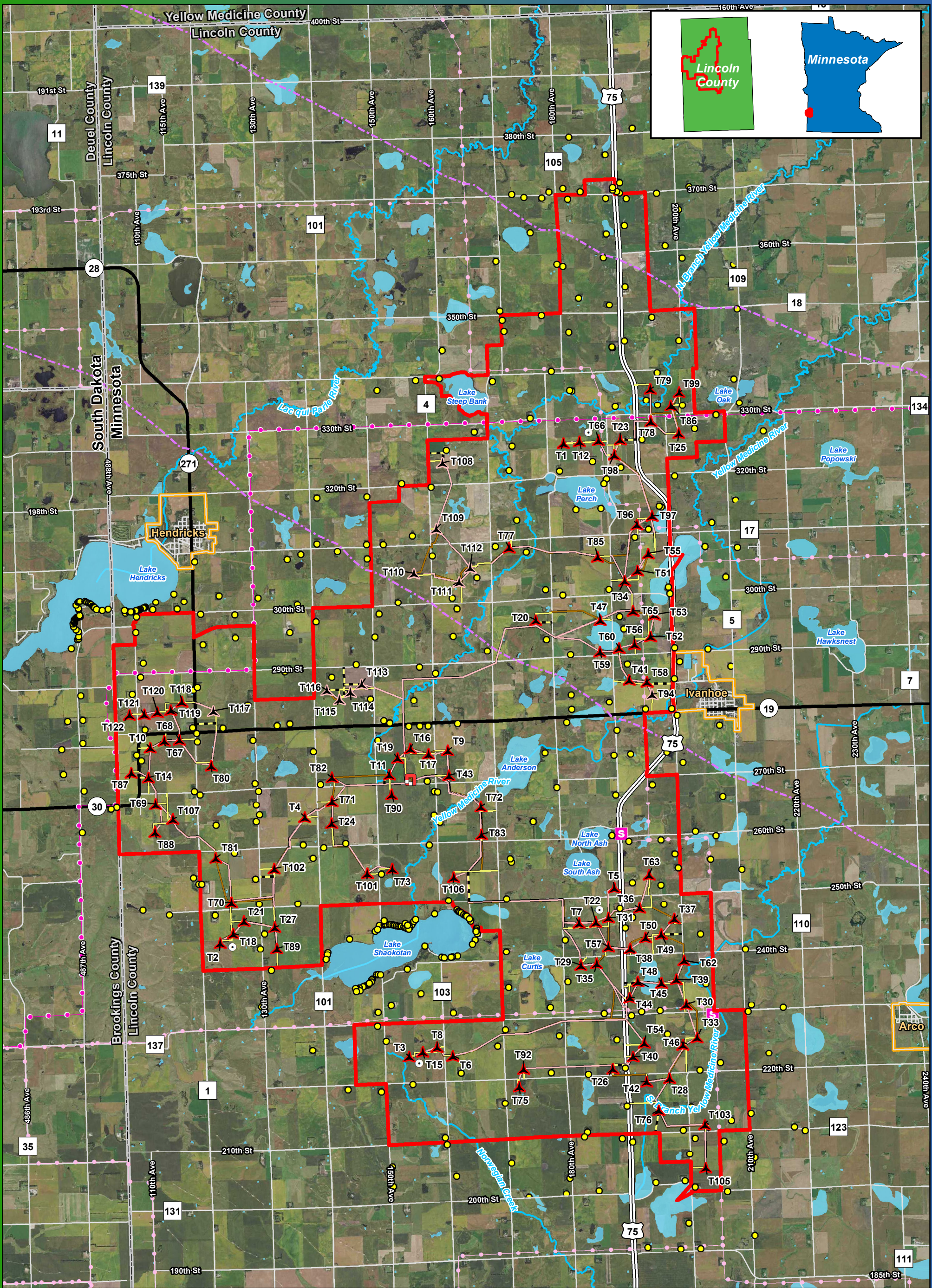


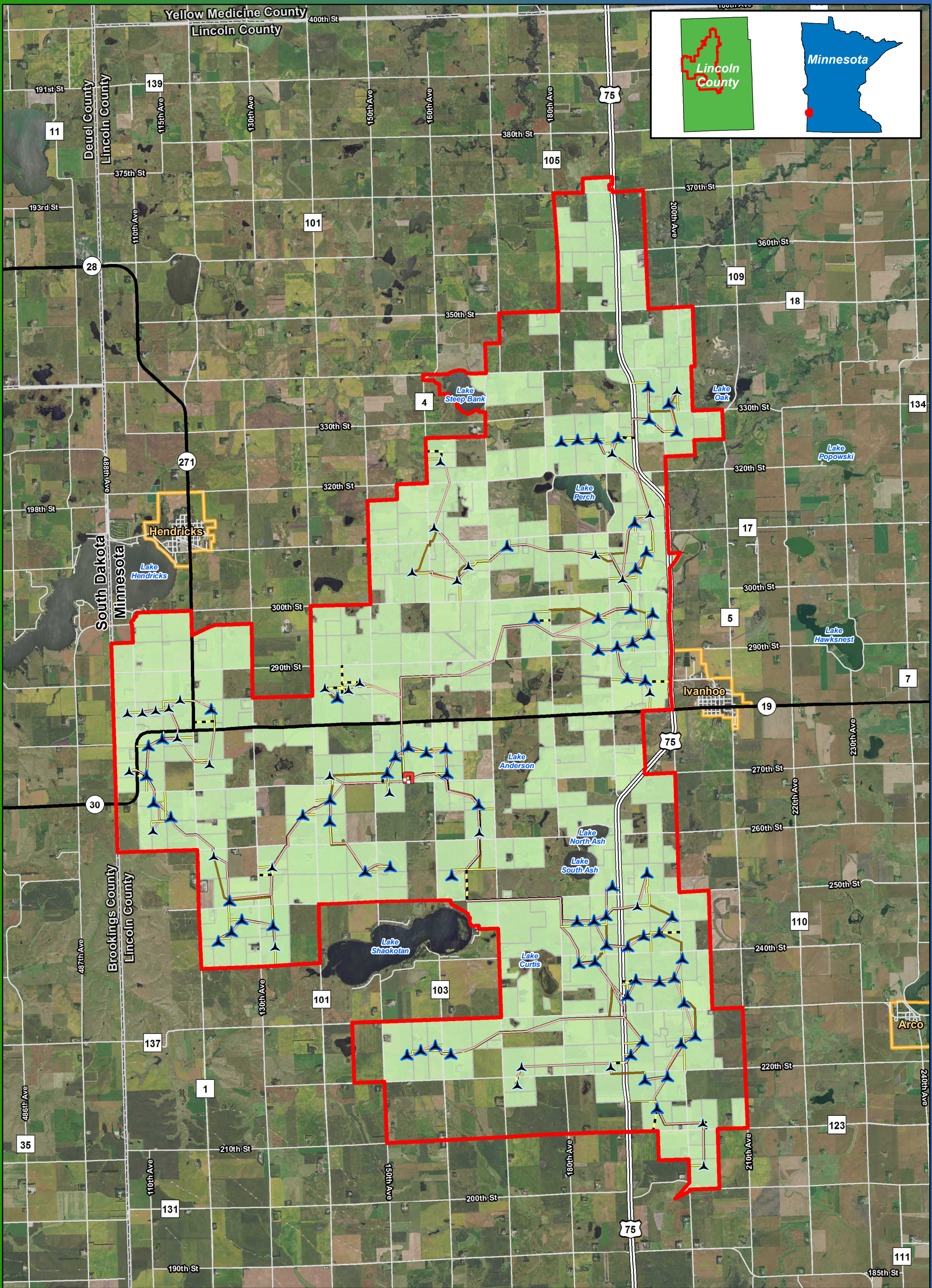
Figure 4d
Project Area and Facilities
Vestas V110
Blazing Star Wind Farm 2
Lincoln County, MN
 44.460125, -96.336861

- | | | | |
|--|--|--|-----------------------------|
| | Preliminary Turbine Location | | Collection Line |
| | Alternate Turbine Location | | Crane Path |
| | Permanent Met Tower | | Project Substation |
| | Residential Structures within 1 Mile (excluding cities of Hendricks and Ivanhoe) | | 24k Stream or Ditch |
| | Project Area Boundary | | Lake, Pond or Reservoir |
| | Access Road | | Existing Substation |
| | Alternate Access Road | | Existing Transmission Line |
| | | | MVP 345kV Transmission Line |
| | | | Existing Pipeline |

Lincoln County, MN

0 0.75 1.5 3
Miles

Imagery Source: 2015 Color FSA
Data Source: Geronimo Energy, MN DNR, Census, Lincoln Co.

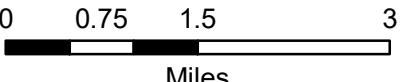


**Figure 5a
Land Ownership
Gamesa G126**

**Blazing Star Wind Farm 2
Lincoln County, MN**

44.460125, -96.336861

- | | | | |
|--|------------------------------|--|---------------------|
| | Preliminary Turbine Location | | Site Control Status |
| | Alternate Turbine Location | | Non-Participants |
| | Project Area Boundary | | Participants |
| | Project Substation | | |
| | Access Road | | |
| | Alternate Access Road | | |
| | Collection Line | | |
| | Crane Path | | |



Imagery Source: 2015 Color FSA
Data Source: Geronimo Energy, MN DNR, Census, Lincoln Co.