

Proposed Pipeline - Sandpiper	Existing Enbridge Pipelines	Tract Boundary	Milepost - Sandpiper	Facility Boundary
Foreign Pipes	Transmission Lines	Section Lines	Potential Block Valve	Previously Sited Facility Boundary
SPREAD BREAK			Environmental Survey Area (ESA)	

500 250 0 500 1,000 Feet

DRAWN	CHECKED	APPROVED	DATE	REV NO.	DESCRIPTION
			1/29/14	2	PUC Update - Revision D-2 Alignment
			12/19/13	1	PUC Update - Revision D Alignment
			10/10/13	0	PUC Submittal

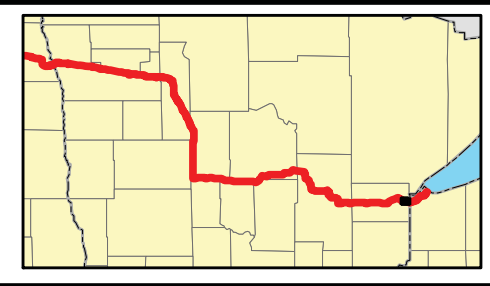
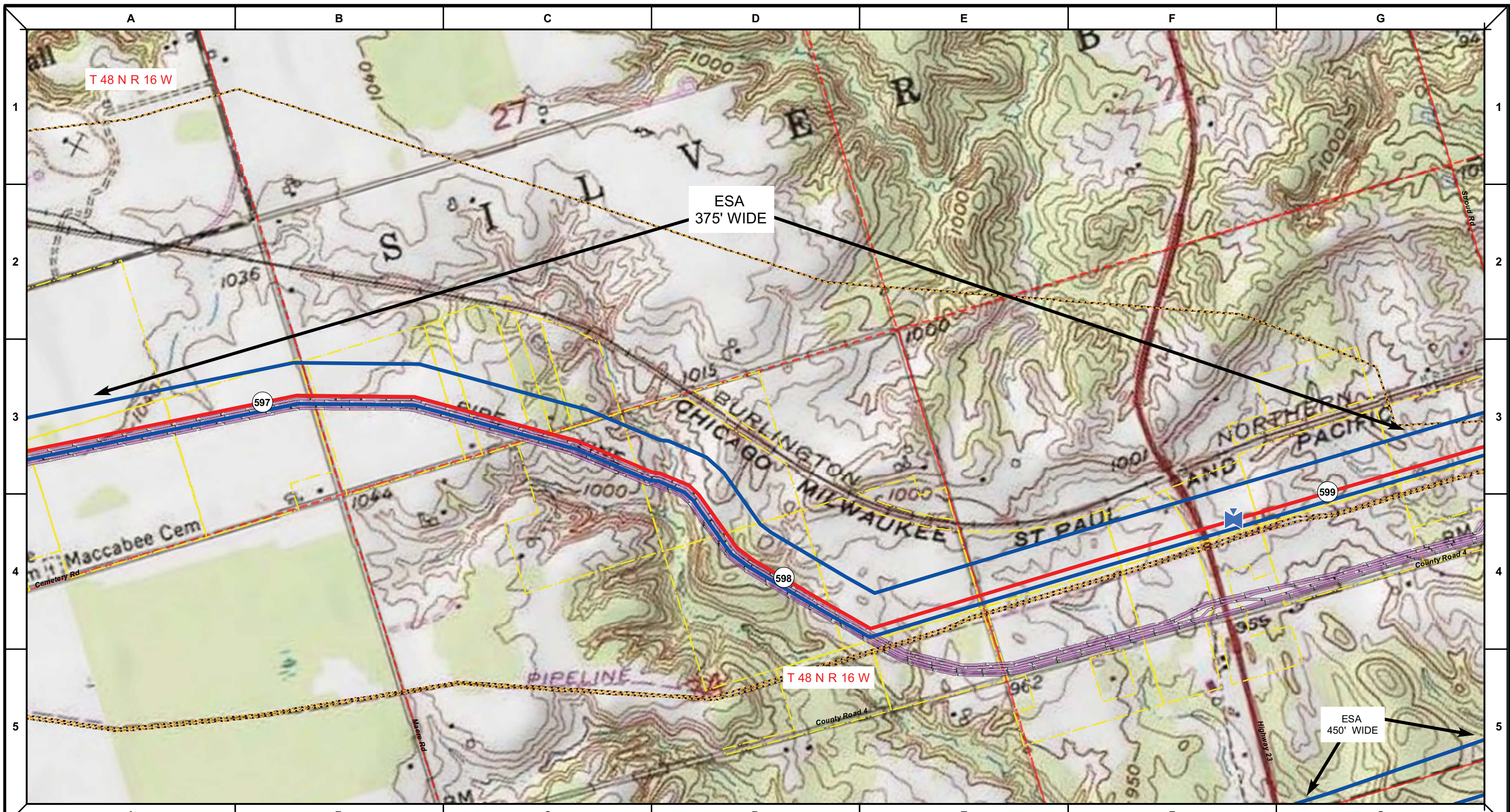
**ENBRIDGE**  
NORTH DAKOTA PIPELINE COMPANY LLC

**PROPOSED SANDPIPER PIPELINE PROJECT ROUTE MAP**  
Carlton County, MN

DRAWN: <b>MLB</b>	CHECKED: <b>-</b>
DATE: <b>Jan 30, 2014</b>	SCALE: <b>AS SHOWN</b>

Spread: 8      Map: 122 of 123





Proposed Pipeline - Sandpiper	Milepost - Sandpiper	Tract Boundary
Existing Enbridge Pipelines	Potential Block Valve	Facility Boundary
Foreign Pipes	Environmental Survey Area (ESA)	Previously Sited Facility Boundary
Transmission Lines		Section Lines
SPREAD BREAK		

500 250 0 500 1,000 Feet

DRAWN	CHECKED	APPROVED	DATE	REV NO.	DESCRIPTION
			1/29/14	2	PUC Update - Revision D-2 Alignment
			12/19/13	1	PUC Update - Revision D Alignment
			10/10/13	0	PUC Submittal

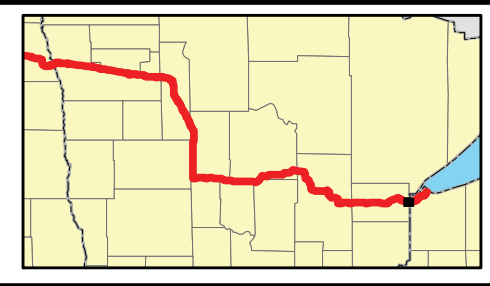
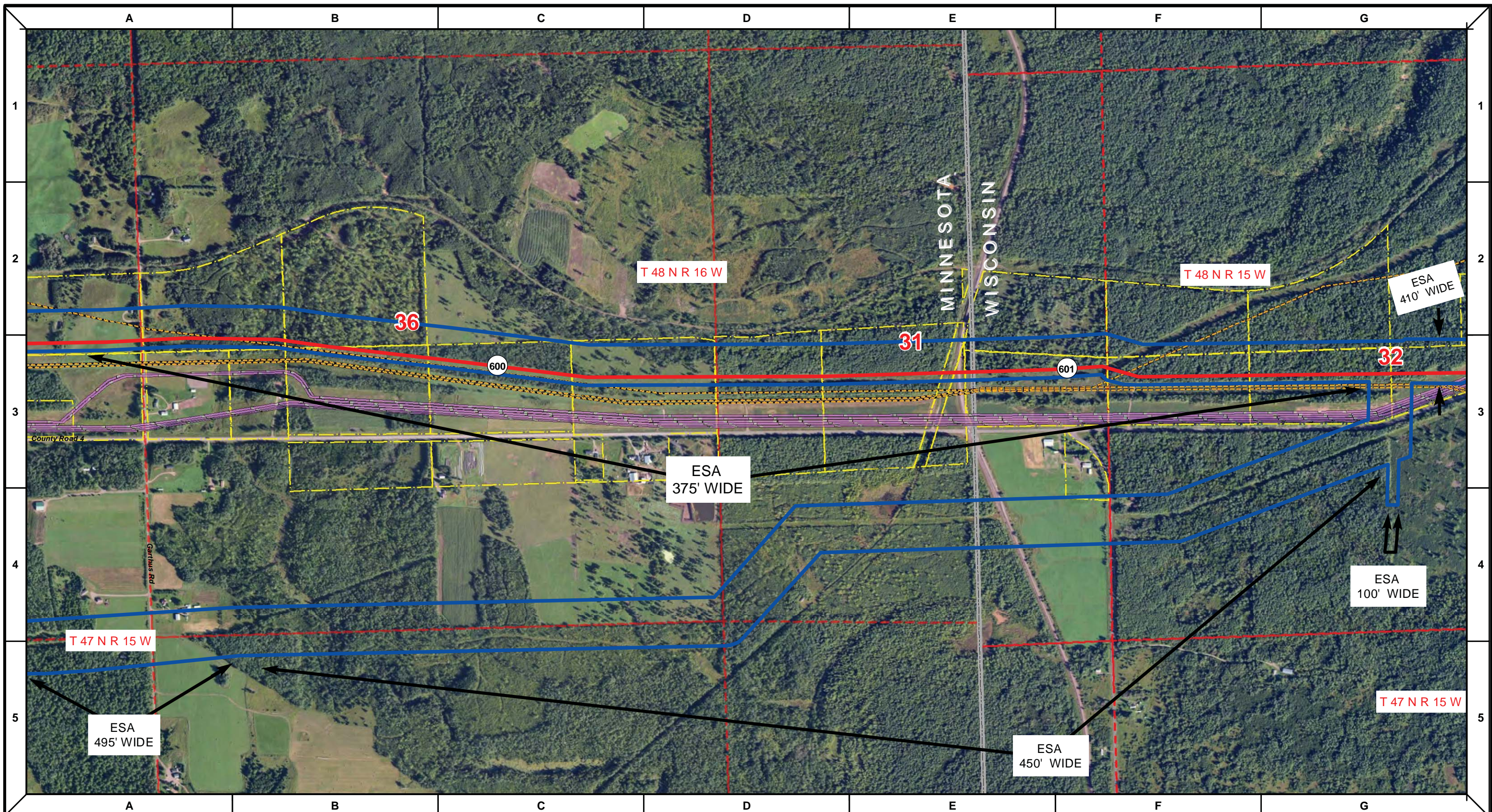
**NORTH DAKOTA PIPELINE COMPANY LLC**

**PROPOSED SANDPIPER PIPELINE PROJECT**  
**ROUTE MAP**  
 Carlton County, MN

DRAWN: <i>MLB</i>	CHECKED: <i>-</i>
DATE: <i>Jan 30, 2014</i>	SCALE: <i>AS SHOWN</i>

Spread: 8      Map: 122 of 123





Proposed Pipeline - Sandpiper	Milepost - Sandpiper	Tract Boundary
Existing Enbridge Pipelines	Potential Block Valve	Facility Boundary
Foreign Pipes	Environmental Survey Area (ESA)	Previously Sited Facility Boundary
Transmission Lines		Section Lines
SPREAD BREAK		

MLB	DATE	REV NO.	DESCRIPTION
	1/29/14	2	PUC Update - Revision D-2 Alignment
	12/19/13	1	PUC Update - Revision D Alignment
	10/10/13	0	PUC Submittal
DRAWN	CHECKED	APPROVED	DATE
			REV NO.

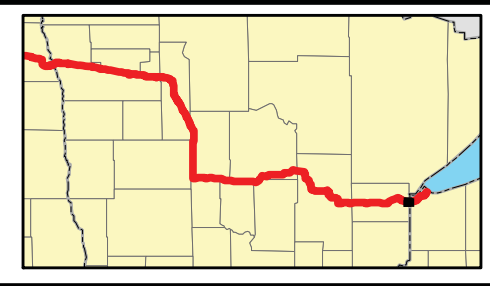
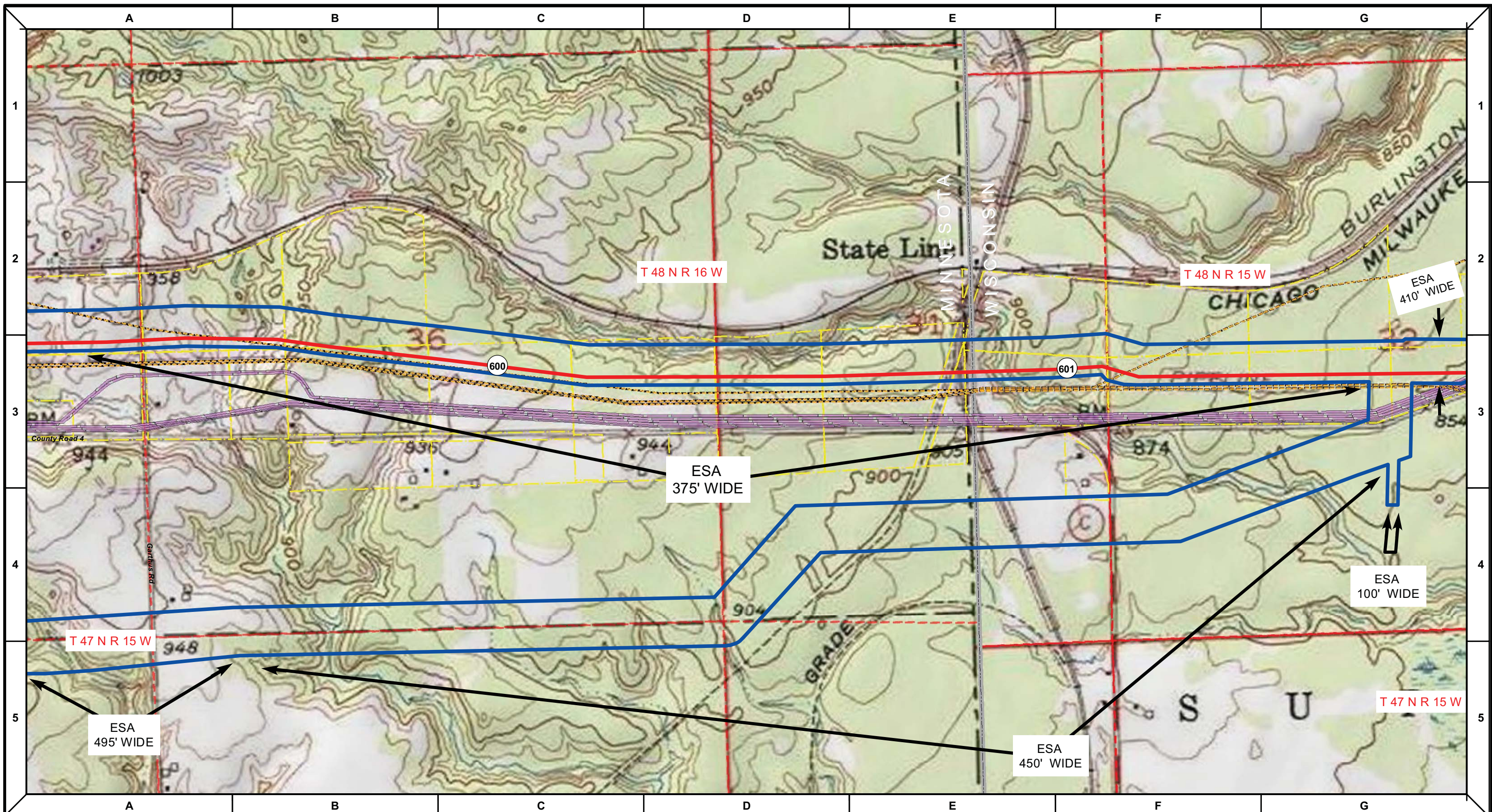
NORTH DAKOTA PIPELINE COMPANY LLC

**PROPOSED SANDPIPER PIPELINE PROJECT**  
 ROUTE MAP  
 Carlton County, MN & Douglas County, WI

<small>DRAWN:</small> MLB	<small>CHECKED:</small> -
<small>DATE:</small> Jan 30, 2014	<small>SCALE:</small> AS SHOWN

Spread: 8      Map: 123 of 123





Proposed Pipeline - Sandpiper	Milepost - Sandpiper	Tract Boundary
Existing Enbridge Pipelines	Potential Block Valve	Facility Boundary
Foreign Pipes	Environmental Survey Area (ESA)	Previously Sited Facility Boundary
Transmission Lines		Section Lines
SPREAD BREAK		

DRAWN	CHECKED	APPROVED	DATE	REV NO.	DESCRIPTION
			1/29/14	2	PUC Update - Revision D-2 Alignment
			12/19/13	1	PUC Update - Revision D Alignment
			10/10/13	0	PUC Submittal

**NORTH DAKOTA PIPELINE COMPANY LLC**

**PROPOSED SANDPIPER PIPELINE PROJECT**  
 ROUTE MAP  
 Carlton County, MN & Douglas County, WI

DRAWN: <b>MLB</b>	CHECKED: <b>-</b>
DATE: <b>Jan 30, 2014</b>	SCALE: <b>AS SHOWN</b>

Spread: 8      Map: 123 of 123