

Proposed Pipeline - Sandpiper	Existing Enbridge Pipelines	Tract Boundary
Foreign Pipes	Transmission Lines	Facility Boundary
SPREAD BREAK	Environmental Survey Area (ESA)	Section Lines
Milepost - Sandpiper	Potential Block Valve	Previously Sited Facility Boundary

500 250 0 500 1,000 Feet

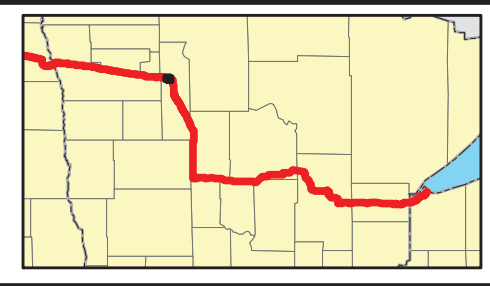
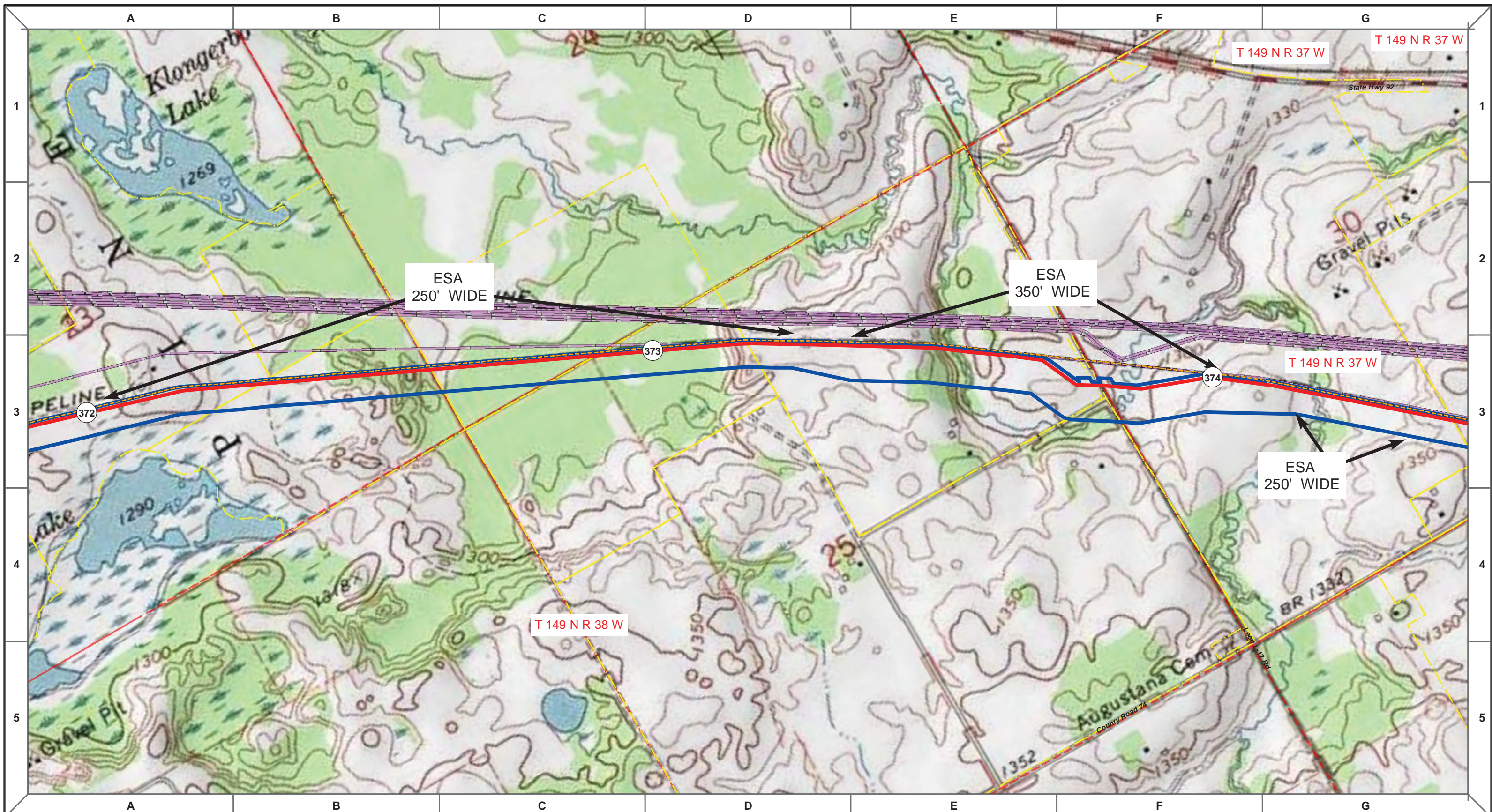
MLB	DATE	REV NO.	DESCRIPTION
	10/10/13	0	PUC Submittal

ENBRIDGE PIPELINES (NORTH DAKOTA) LLC

PROPOSED SANDPIPER PIPELINE PROJECT
ROUTE MAP
 Clearwater County, MN

DRAWN: MLB	CHECKED: --
DATE: Oct 18, 2013	SCALE: AS SHOWN

Spread:5 Map: 32 of 128



Proposed Pipeline - Sandpiper	Milepost - Sandpiper	Tract Boundary
Existing Enbridge Pipelines	Potential Block Valve	Facility Boundary
Foreign Pipes	Environmental Survey Area (ESA)	Previously Sited Facility Boundary
Transmission Lines		Section Lines
SPREAD BREAK		

500 250 0 500 1,000 Feet

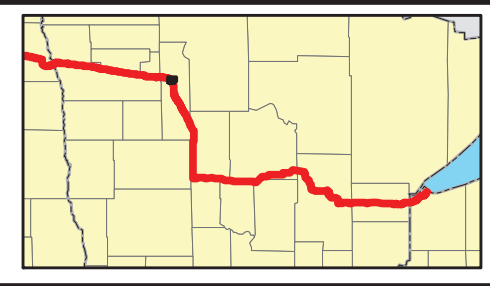
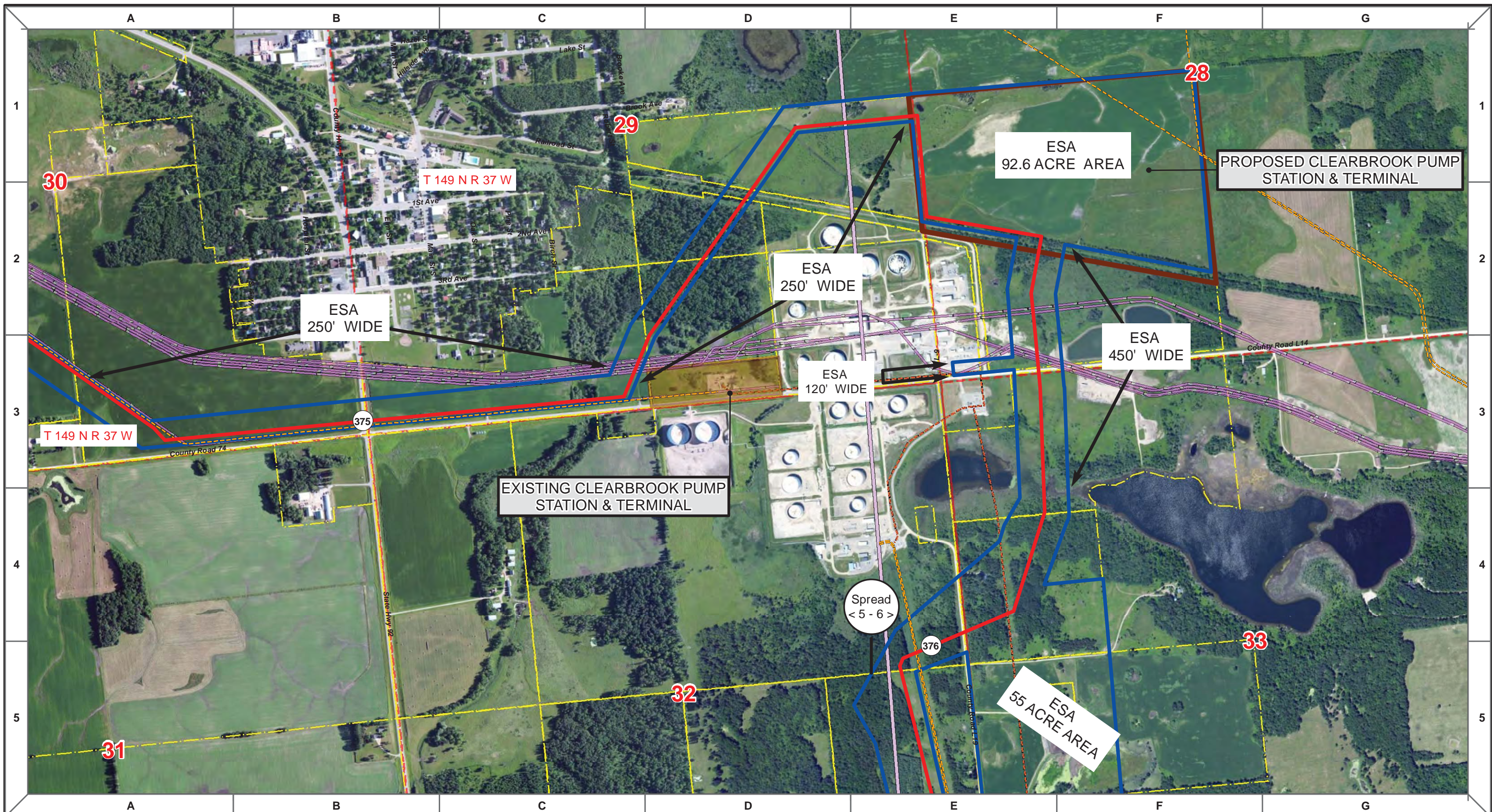
MLB	DATE	REV NO.	DESCRIPTION
	10/10/13	0	PUC Submittal

ENBRIDGE PIPELINES (NORTH DAKOTA) LLC

PROPOSED SANDPIPER PIPELINE PROJECT
ROUTE MAP
 Clearwater County, MN

DRAWN: MLB	CHECKED: --
DATE: Oct 18, 2013	SCALE: AS SHOWN

Spread:5 Map: 32 of 128



Proposed Pipeline - Sandpiper	Milepost - Sandpiper	Tract Boundary
Existing Enbridge Pipelines	Potential Block Valve	Facility Boundary
Foreign Pipes	Environmental Survey Area (ESA)	Previously Sited Facility Boundary
Transmission Lines		Section Lines
SPREAD BREAK		

500 250 0 500 1,000 Feet

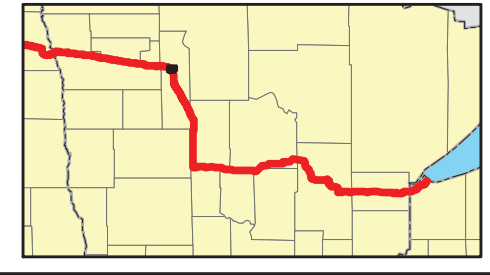
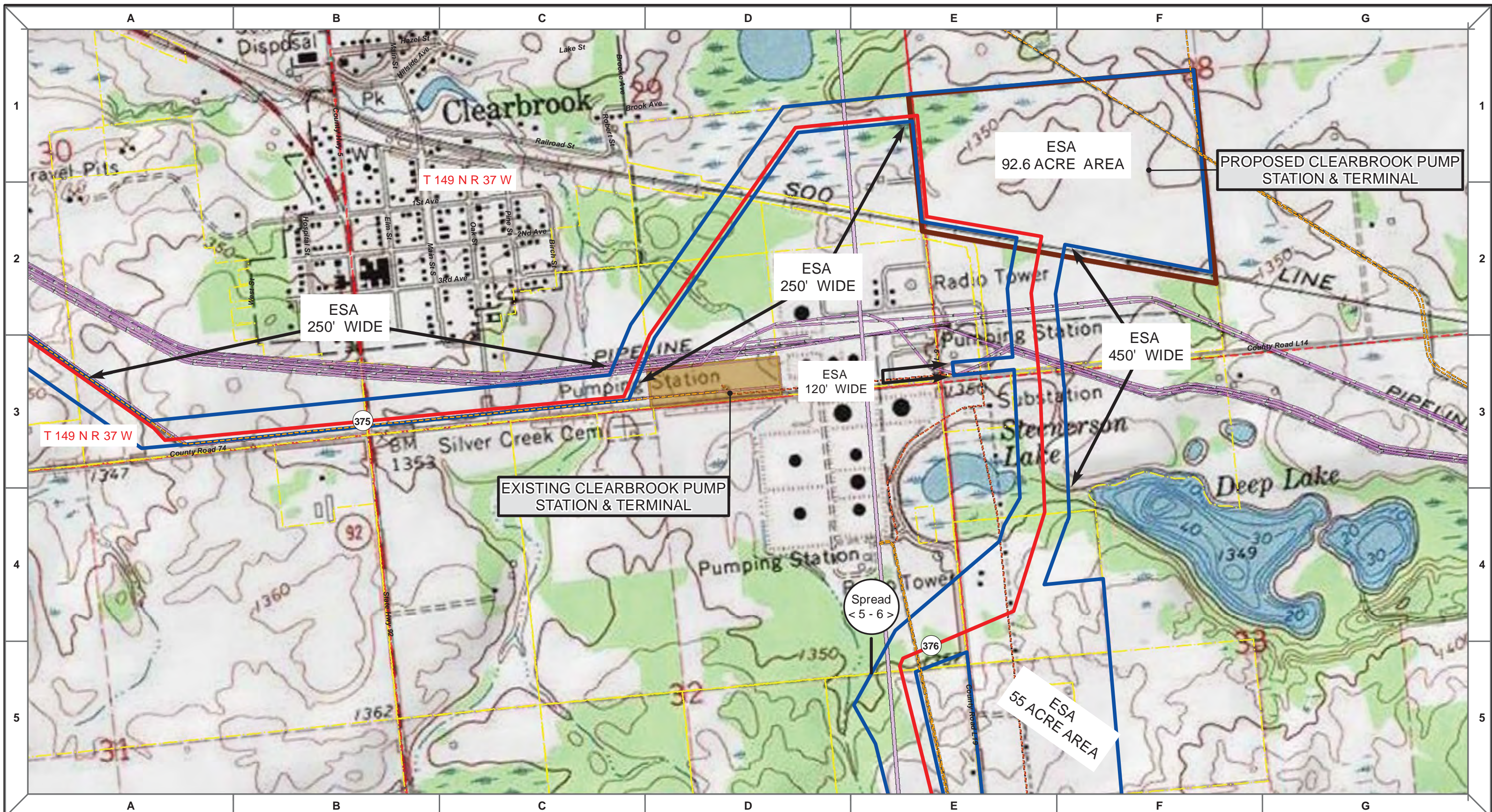
MLB	DATE	REV NO.	DESCRIPTION
	10/10/13	0	PUC Submittal

ENBRIDGE PIPELINES (NORTH DAKOTA) LLC

**PROPOSED SANDPIPER PIPELINE PROJECT
ROUTE MAP
Clearwater County, MN**

DRAWN: MLB	CHECKED: --
DATE: Oct 18, 2013	SCALE: AS SHOWN

Spread:5-6 Map: 33 of 128



Proposed Pipeline - Sandpiper	Milepost - Sandpiper	Tract Boundary
Existing Enbridge Pipelines	Potential Block Valve	Facility Boundary
Foreign Pipes	Environmental Survey Area (ESA)	Previously Sited Facility Boundary
Transmission Lines		Section Lines
SPREAD BREAK		

500 250 0 500 1,000 Feet

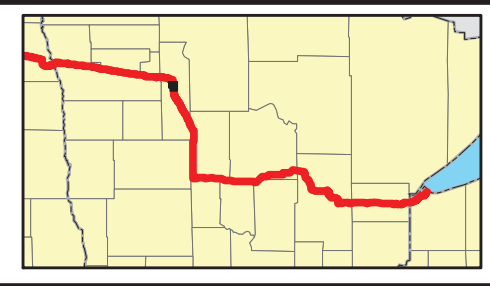
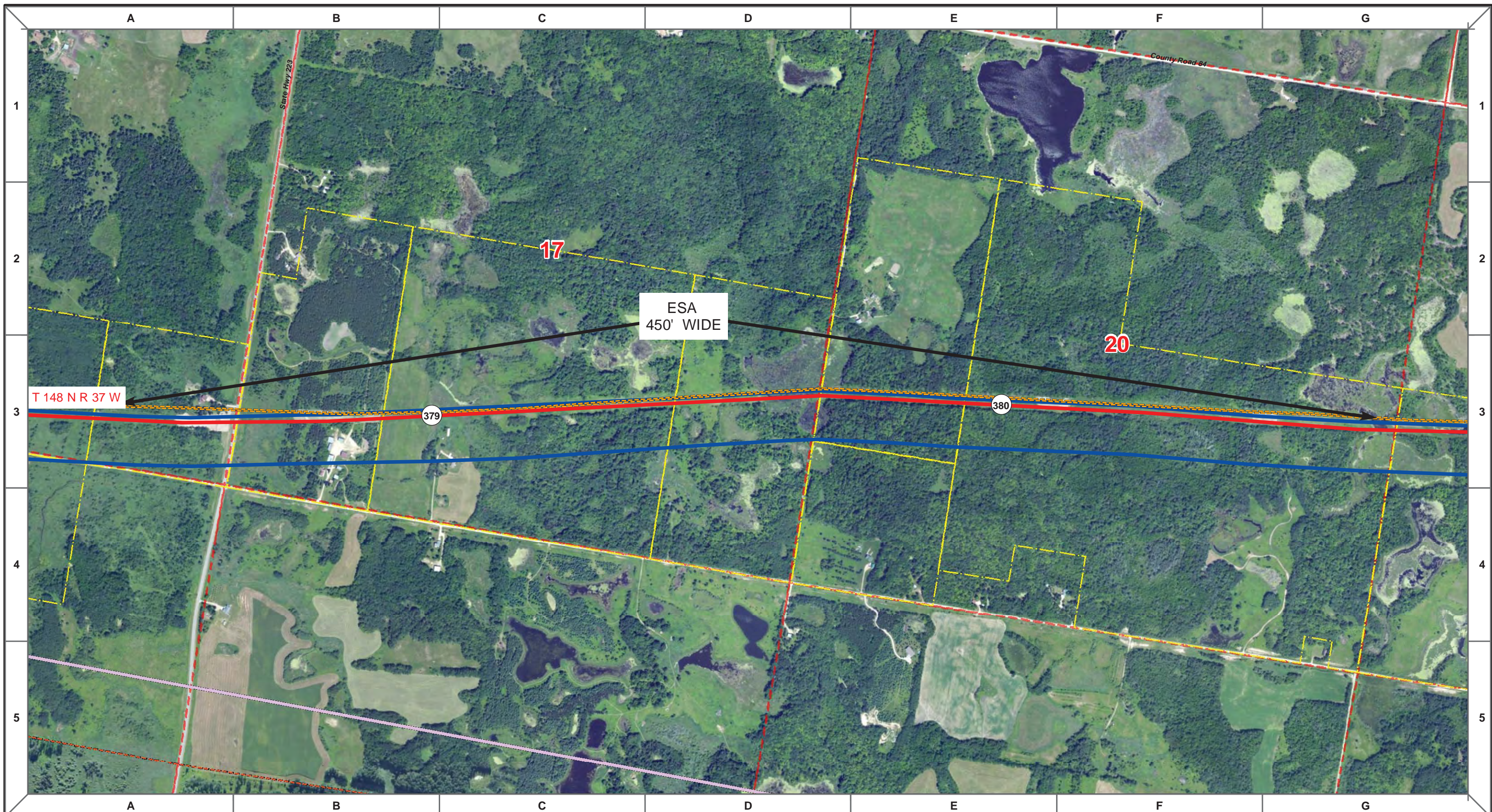
MLB	DATE	REV NO.	DESCRIPTION
	10/10/13	0	PUC Submittal

ENBRIDGE PIPELINES (NORTH DAKOTA) LLC

**PROPOSED SANDPIPER PIPELINE PROJECT
ROUTE MAP
Clearwater County, MN**

DRAWN: MLB	CHECKED: --
DATE: Oct 18, 2013	SCALE: AS SHOWN

Spread:5-6 Map: 33 of 128



Proposed Pipeline - Sandpiper	Milepost - Sandpiper	Tract Boundary
Existing Enbridge Pipelines	Potential Block Valve	Facility Boundary
Foreign Pipes	Environmental Survey Area (ESA)	Previously Sited Facility Boundary
Transmission Lines		Section Lines
SPREAD BREAK		

500 250 0 500 1,000 Feet

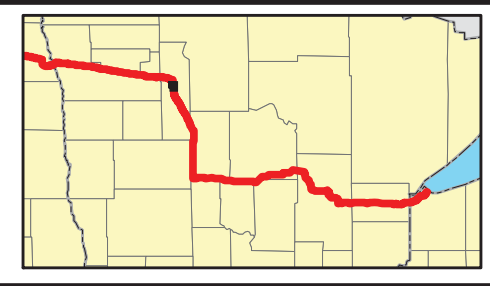
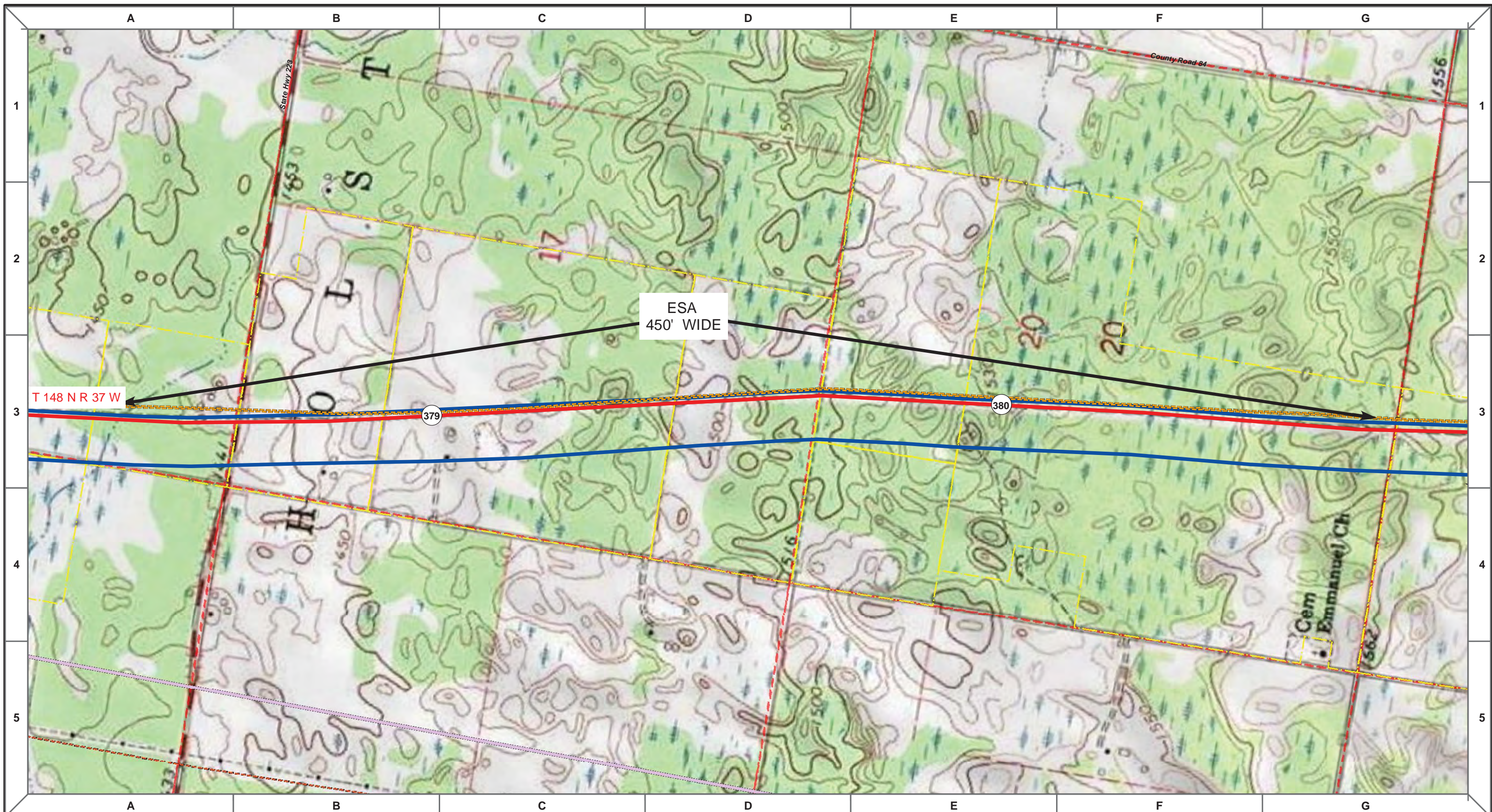
MLB		10/10/13	0		
DRAWN	CHECKED	APPROVED	DATE	REV NO.	DESCRIPTION

ENBRIDGE PIPELINES (NORTH DAKOTA) LLC

PROPOSED SANDPIPER PIPELINE PROJECT
ROUTE MAP
Clearwater County, MN

<small>DRAWN:</small> MLB	<small>CHECKED:</small> --
<small>DATE:</small> Oct 18, 2013	<small>SCALE:</small> AS SHOWN

Spread:6 Map: 35 of 128



Proposed Pipeline - Sandpiper	Milepost - Sandpiper	Tract Boundary
Existing Enbridge Pipelines	Potential Block Valve	Facility Boundary
Foreign Pipes	Environmental Survey Area (ESA)	Previously Sited Facility Boundary
Transmission Lines		Section Lines
SPREAD BREAK		

500 250 0 500 1,000 Feet

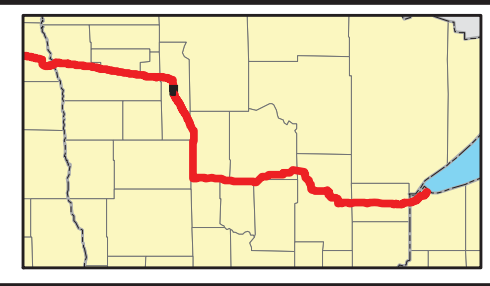
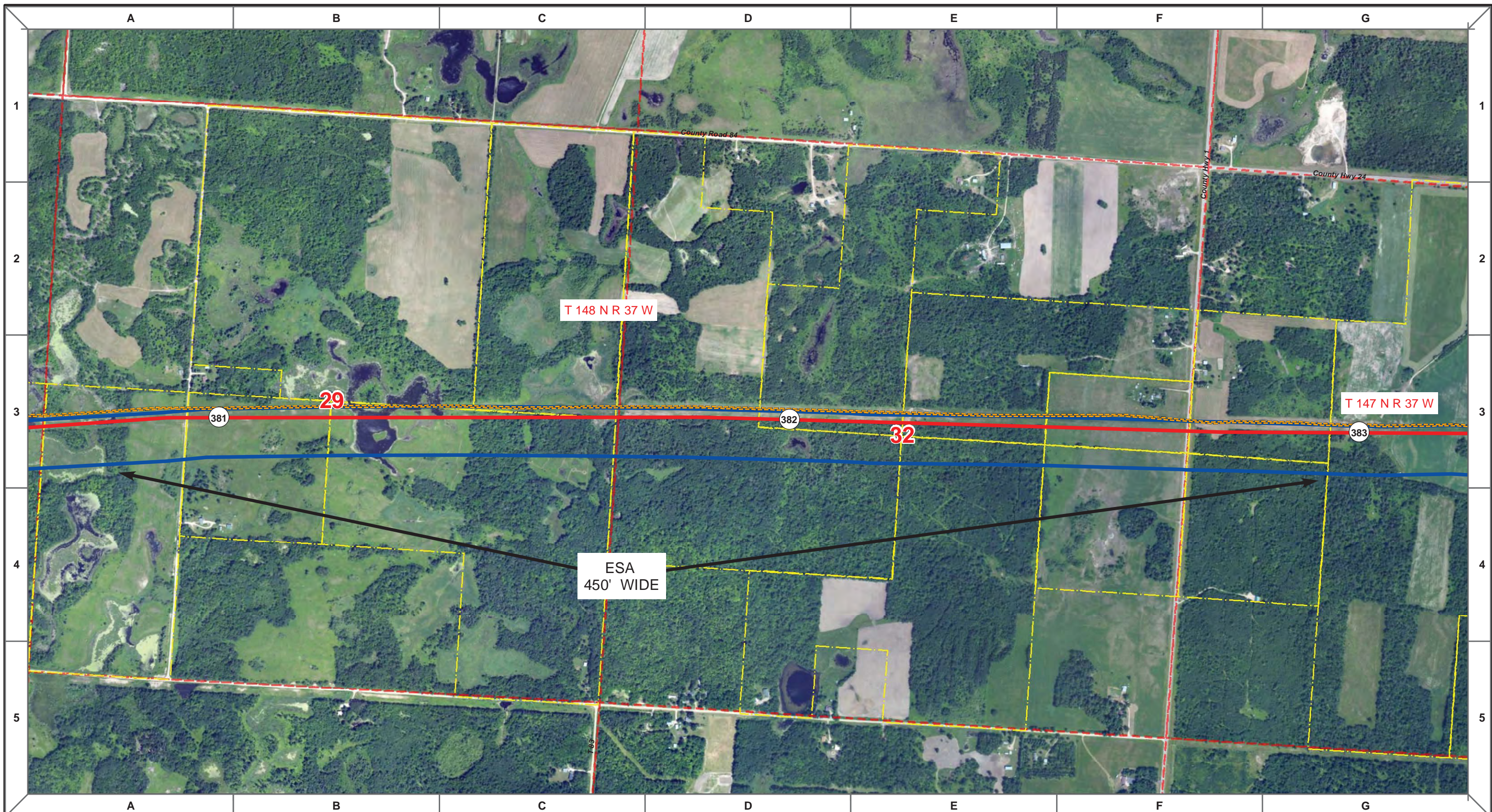
MLB	DATE	REV NO.	DESCRIPTION
	10/10/13	0	PUC Submittal

ENBRIDGE PIPELINES (NORTH DAKOTA) LLC

PROPOSED SANDPIPER PIPELINE PROJECT
ROUTE MAP
Clearwater County, MN

DRAWN: MLB	CHECKED: --
DATE: Oct 18, 2013	SCALE: AS SHOWN

Spread:6 Map: 35 of 128



Proposed Pipeline - Sandpiper	Milepost - Sandpiper	Tract Boundary
Existing Enbridge Pipelines	Potential Block Valve	Facility Boundary
Foreign Pipes	Environmental Survey Area (ESA)	Previously Sited Facility Boundary
Transmission Lines		Section Lines
SPREAD BREAK		

500 250 0 500 1,000 Feet

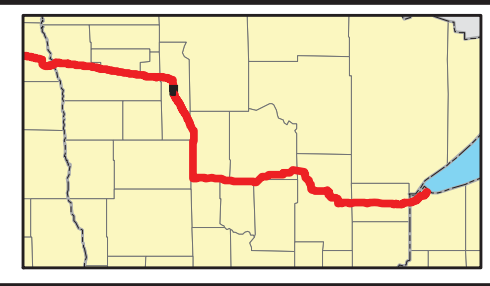
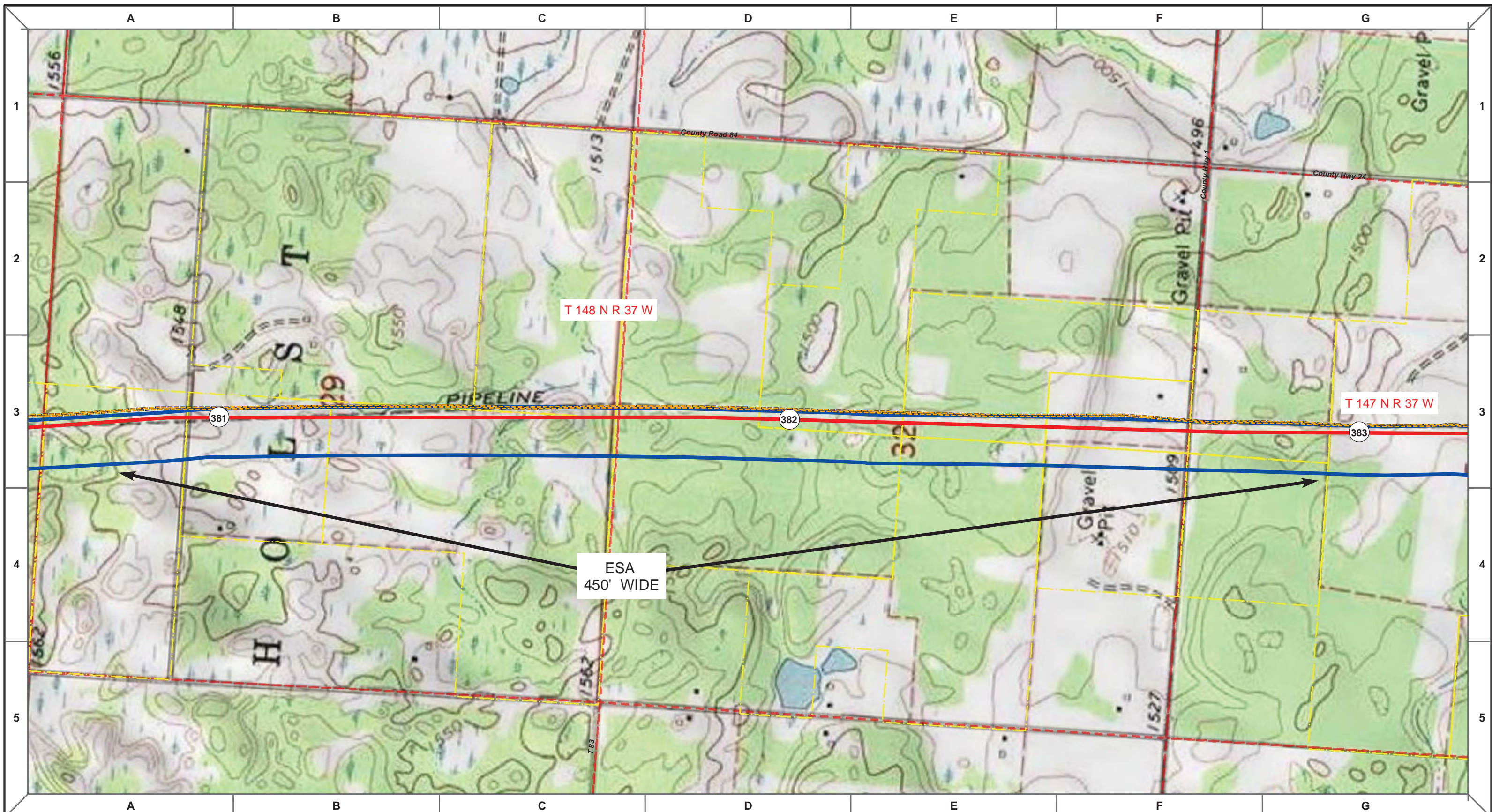
MLB		10/10/13	0						
DRAWN	CHECKED	APPROVED	DATE	REV NO.	DESCRIPTION				
					PUC Submittal				

ENBRIDGE PIPELINES (NORTH DAKOTA) LLC

PROPOSED SANDPIPER PIPELINE PROJECT
ROUTE MAP
Clearwater County, MN

<small>DRAWN:</small> MLB	<small>CHECKED:</small> --
<small>DATE:</small> Oct 18, 2013	<small>SCALE:</small> AS SHOWN

Spread:6
Map: 36 of 128



Proposed Pipeline - Sandpiper	Milepost - Sandpiper	Tract Boundary
Existing Enbridge Pipelines	Potential Block Valve	Facility Boundary
Foreign Pipes	Environmental Survey Area (ESA)	Previously Sited Facility Boundary
Transmission Lines		Section Lines
SPREAD BREAK		

500 250 0 500 1,000 Feet

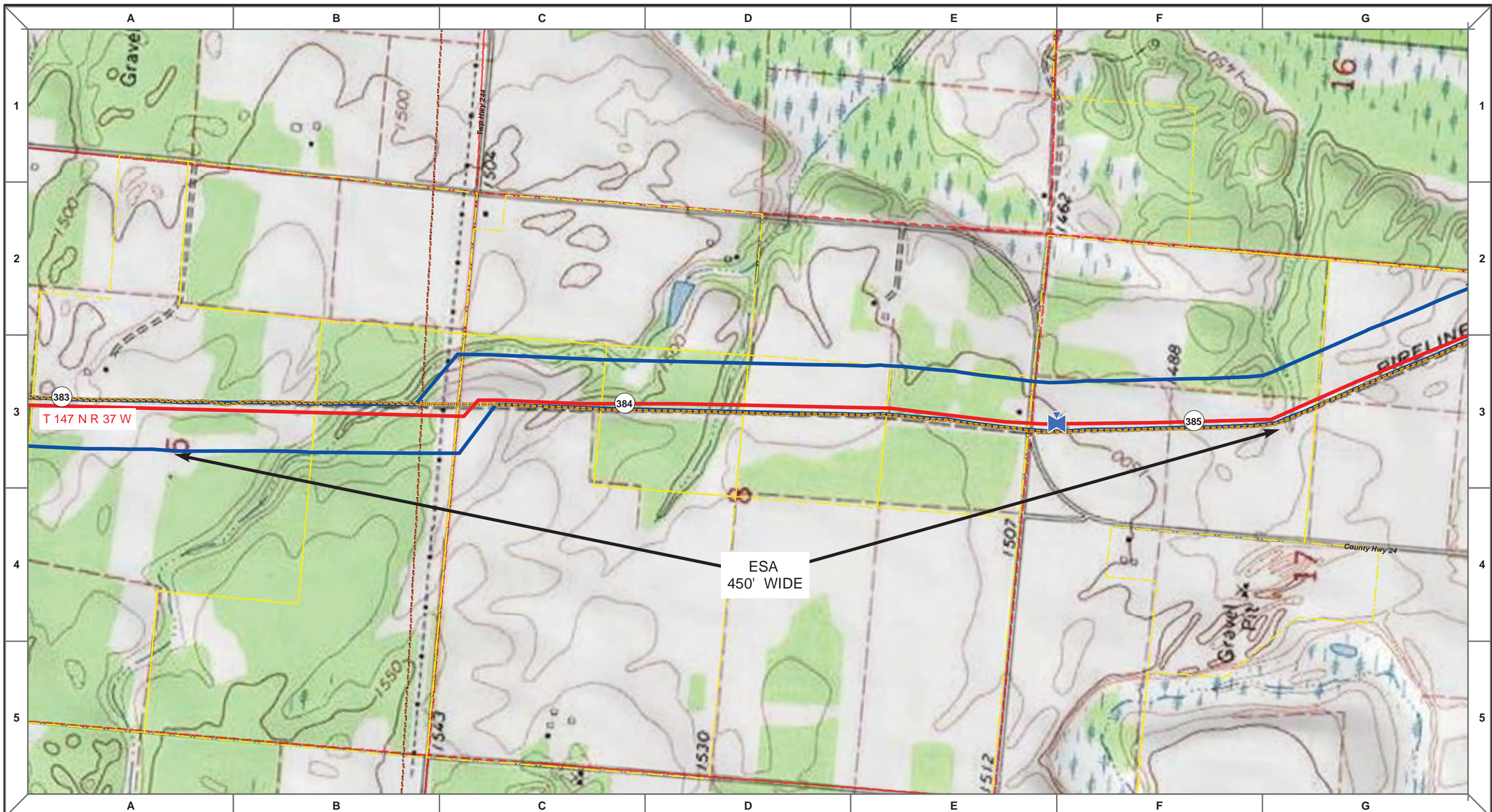
MLB	DATE	REV NO.	DESCRIPTION
	10/10/13	0	PUC Submittal

ENBRIDGE PIPELINES (NORTH DAKOTA) LLC

PROPOSED SANDPIPER PIPELINE PROJECT
ROUTE MAP
 Clearwater County, MN

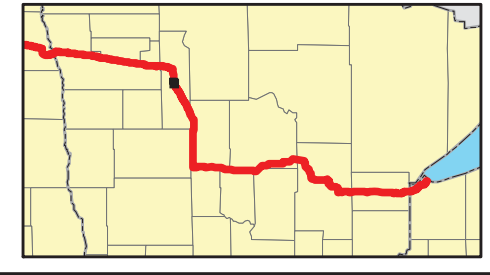
DRAWN: MLB	CHECKED: --
DATE: Oct 18, 2013	SCALE: AS SHOWN

Spread:6 Map: 36 of 128



T 147 NR 37 W

ESA
450' WIDE



- Proposed Pipeline - Sandpiper
- Existing Enbridge Pipelines
- Foreign Pipes
- - - Transmission Lines
- SPREAD BREAK
- 1 Milepost - Sandpiper
- ✕ Potential Block Valve
- Environmental Survey Area (ESA)
- Tract Boundary
- Facility Boundary
- Previously Sited Facility Boundary
- Section Lines



MLB	10/10/13	0	PUC Submittal	
DRAWN	CHECKED	APPROVED	DATE	REV NO.

ENBRIDGE PIPELINES (NORTH DAKOTA) LLC

**PROPOSED SANDPIPER
PIPELINE PROJECT
ROUTE MAP
Clearwater County, MN**

DRAWN: MLB	CHECKED: --
DATE: Oct 18, 2013	SCALE: AS SHOWN

Spread:6
Map: 37 of 128

