

- Proposed Alignment
- Existing Transmission Line
- Proposed Route Corridor
- Annual Average Daily Traffic (2011)
- Municipality/Township Boundary

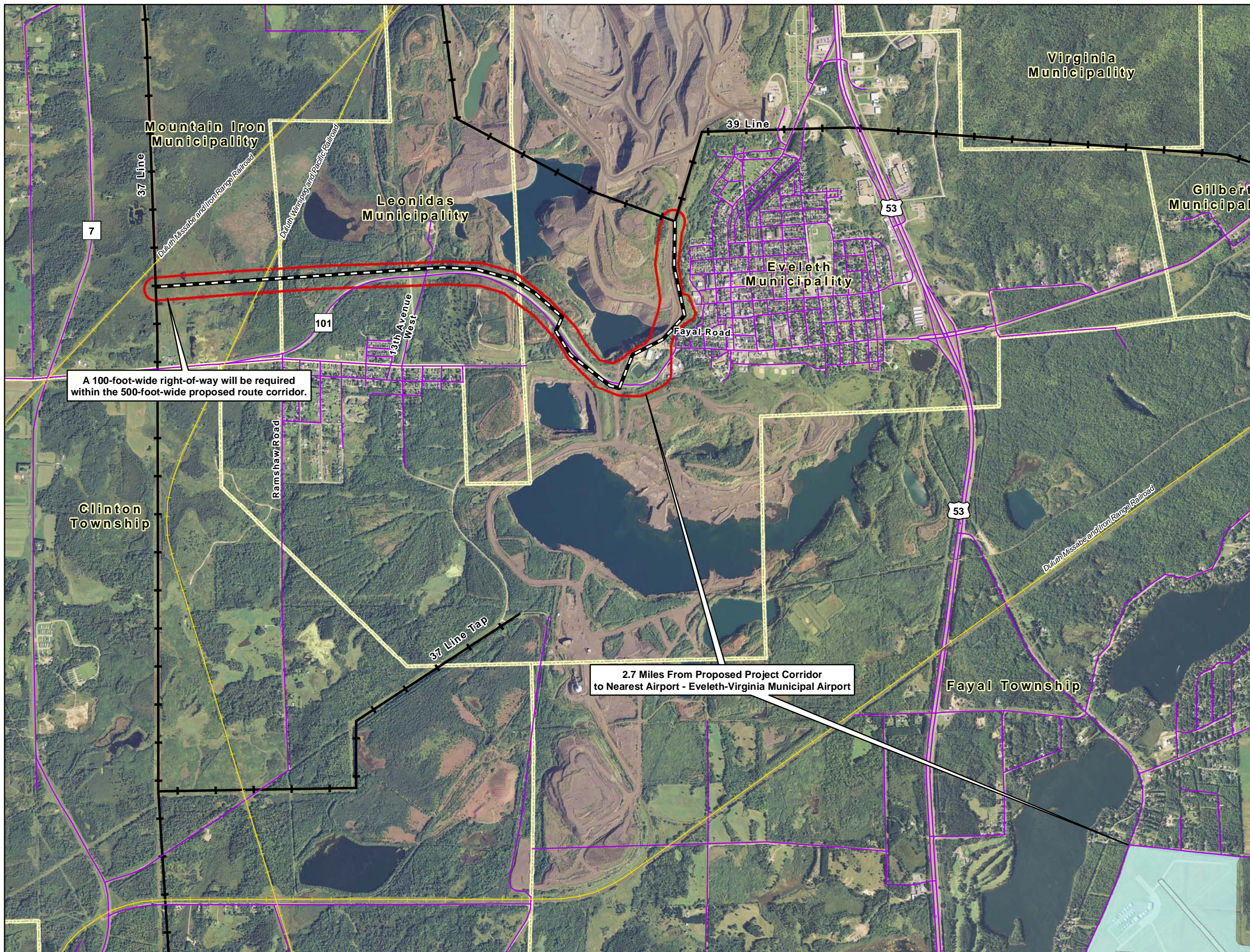
Figure B-13
Minnesota Power
39 Line Project
St. Louis County, Minnesota

ANNUAL AVERAGE
 DAILY TRAFFIC MAP



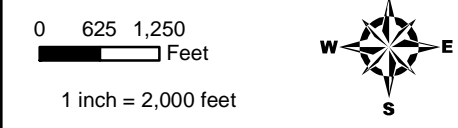
Source: MN Power
 MN DOT
 FSA - NAIP 2010 Aerial

Date: (1/12/2012) Source: Z:\Clients\MN\Power\Line_39_Project\ArcGIS\2012\08\FDC_Figures\Overview_Transportation.mxd



A 100-foot-wide right-of-way will be required within the 500-foot-wide proposed route corridor.

2.7 Miles From Proposed Project Corridor to Nearest Airport - Eveleth-Virginia Municipal Airport



- Proposed Alignment
- Existing Transmission Line
- Proposed Route Corridor
- Railroad
- Road
- Airport
- Municipality/Township Boundary

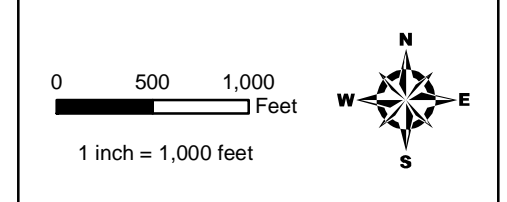
Figure B-14
Minnesota Power
39 Line Project
St. Louis County, Minnesota

**ROADS, RAILROADS,
 AND AIRPORTS MAP**



Source: MN Power
 MN DOT
 FSA - NAIP 2010 Aerial

Date: (1/12/2012) Source: Z:\Clients\MN_Power\Line_39_Project\ArcGIS\2012\08\Figures\Overview_Transportation2.mxd



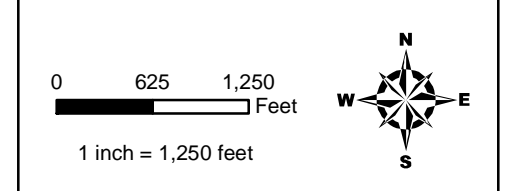
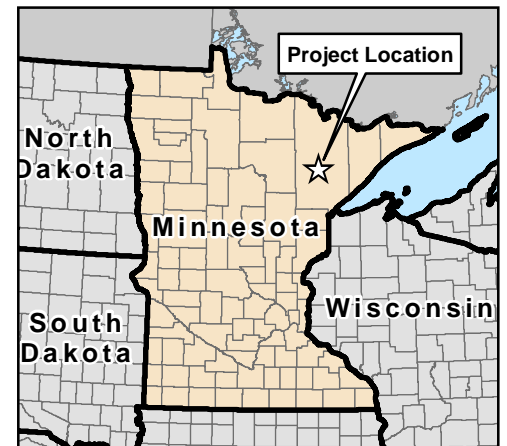
- Proposed Alignment
- Existing Transmission Line
- Proposed Route Corridor
- Barren Land
- Cultivated Crops
- Mixed Forest
- Evergreen Forest
- Deciduous Forest
- Emergent Herbaceous Wetlands
- Woody Wetlands
- Shrub/Scrub
- Open Water
- Developed, High Intensity
- Developed, Medium Intensity
- Developed, Low Intensity
- Developed, Open Space
- Municipality/Township Boundary

Figure B-15
Minnesota Power
39 Line Project
St. Louis County, Minnesota

LANDUSE/LANDCOVER MAP

Source: MN Power
 USDA - NRCS 2006
 FSA - NAIP 2010 Aerial

Date: (1/12/2012) Source: Z:\Clients\MN_Power\PowerLine_39_Project\ArcGIS\2012\08\FUC_Figures\Overview_LULC.mxd



- Proposed Alignment
- Existing Transmission Line
- Proposed Route Corridor
- NRHP Listed
- Historic Building
- Municipality/Township Boundary

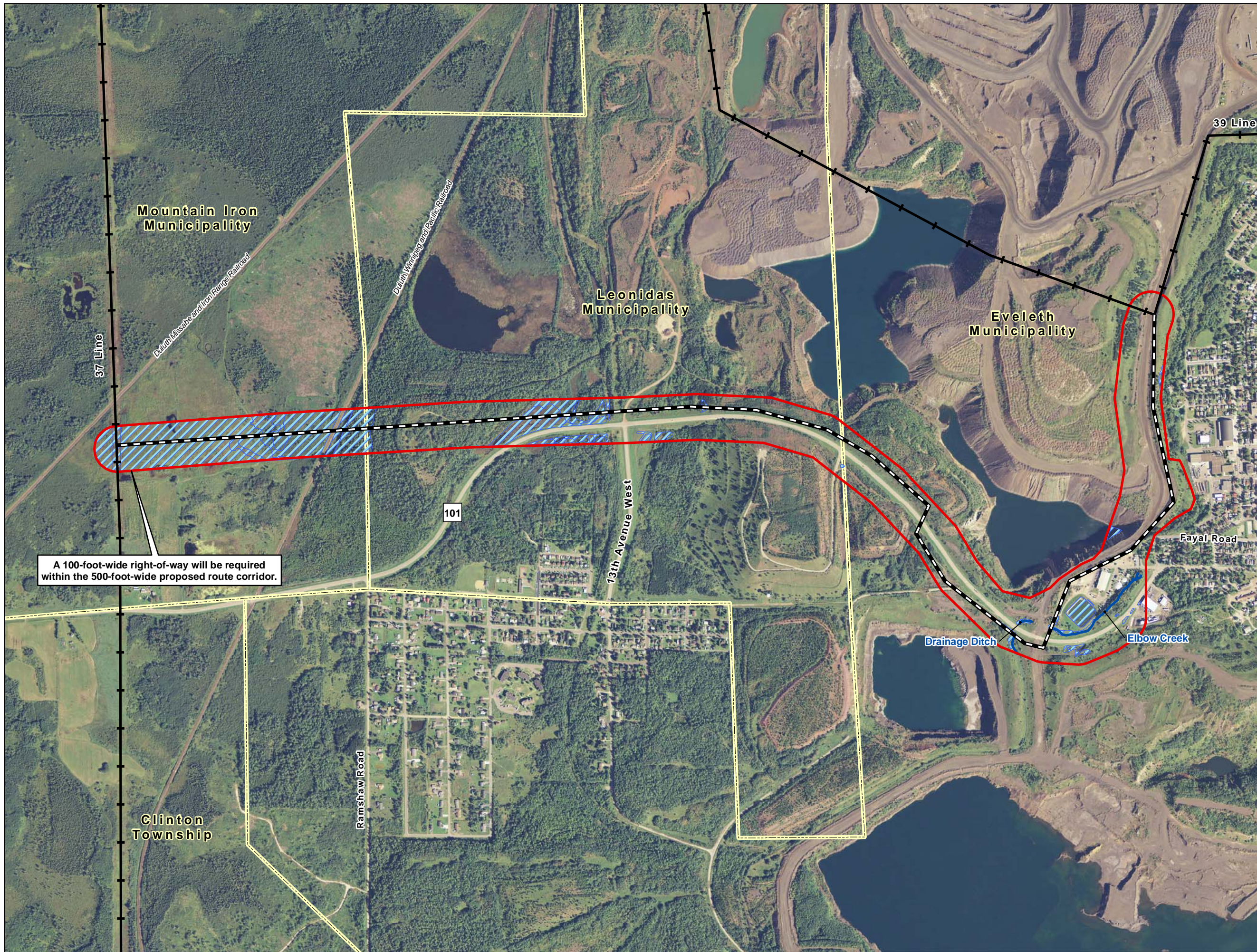
Figure B-16
Minnesota Power
39 Line Project
St. Louis County, Minnesota

CULTURAL DATA MAP

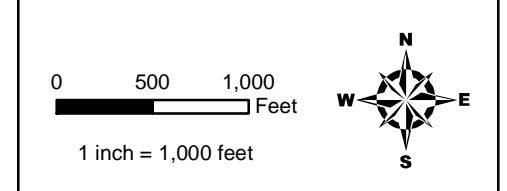
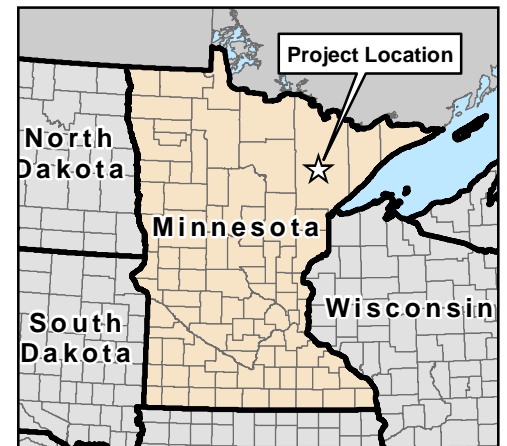


Source: MN SHPO digitized by Merjent
 FSA - NAIP 2010 Aerial

Date: (1/12/2012) Source: Z:\Clients\MN_Power\Line_39_Project\ArcGIS\2012\08\FDC_Figures\Overview_Cultural.mxd



A 100-foot-wide right-of-way will be required within the 500-foot-wide proposed route corridor.



- Proposed Alignment
- Existing Transmission Line
- Proposed Route Corridor
- Delineated Waterbody
- Delineated Wetland
- Municipality/Township Boundary

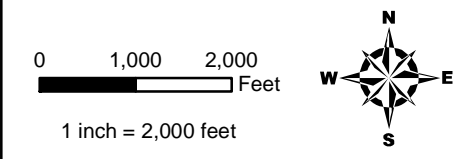
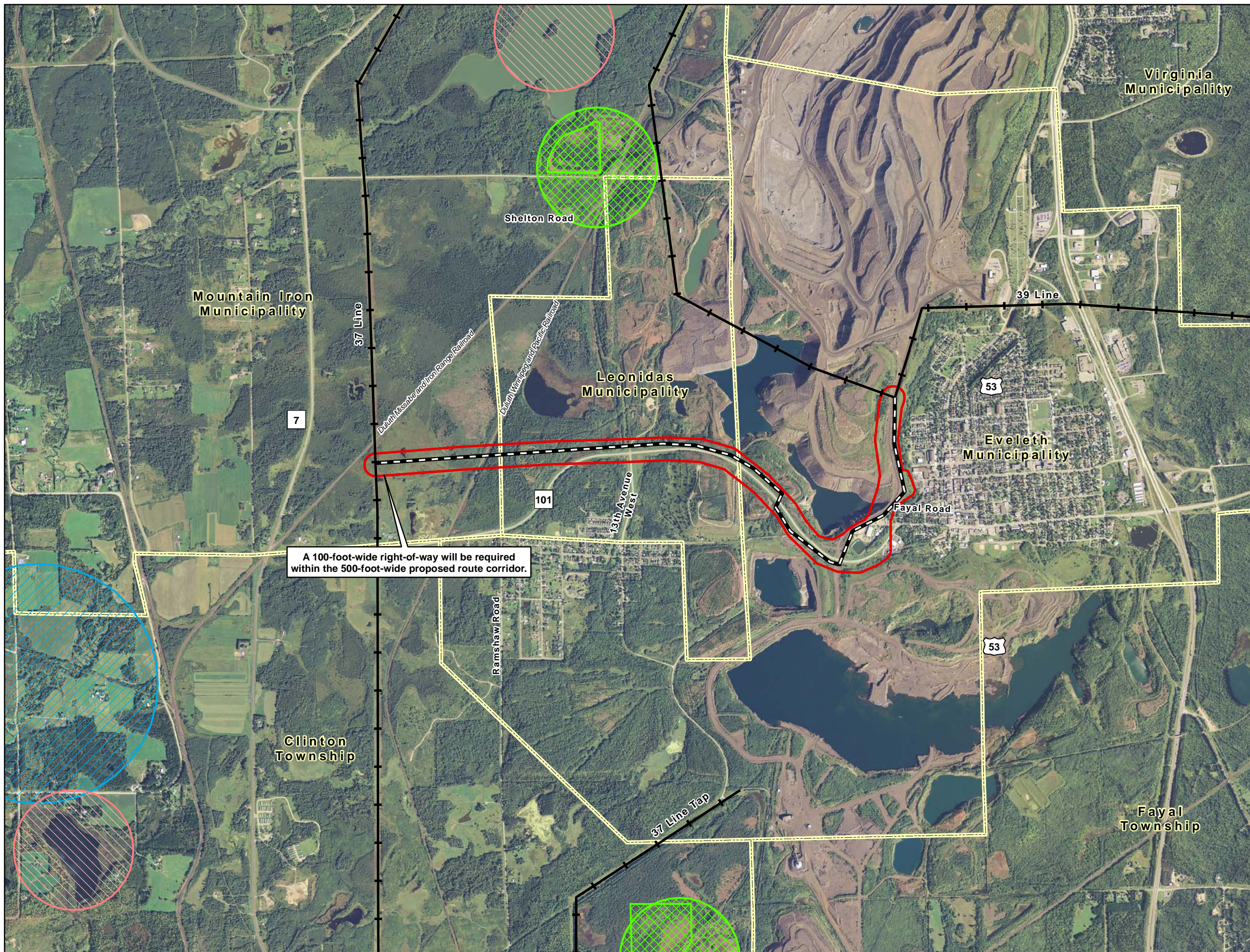
Figure B-17
Minnesota Power
39 Line Project
St. Louis County, Minnesota

DELINEATED WETLANDS
 AND WATERBODIES MAP



Source: MN Power
 Midwest Natural Resources
 FSA - NAIP 2010 Aerial

Source: Z:\Clients\MN_Power\Line_39_Project\ArcGIS\2012\08\F00_Figures\Overview_Wetlands_Waterbodies.mxd Date: 1/12/2012



- Proposed Alignment
- Existing Transmission Line
- Proposed Route Corridor
- Animal Assemblage
- Plant
- Animal
- Municipality/Township Boundary

Figure B-18
Minnesota Power
39 Line Project
St. Louis County, Minnesota

LOCATIONS OF
 KNOWN RARE SPECIES



Source: MN Power
 MN DNR - Natural Heritage Inventory
 FSA - NAIP 2010 Aerial

Date: (1/12/2012) Source: Z:\Clients\MN_Power\Line_39_Project\ArcGIS\2012\08\FDC_Figures\Overview_ESA.mxd

APPENDIX C

Agency and Public Correspondence



Minnesota Power
30 West Superior Street
Duluth, Minnesota 55802

September 13, 2012

<<Insert Contact Name>>
<<Insert Entity>>
<<Insert Address>>
<<Insert City, State, Zip>>

**Re: Notice of Proposed Transmission Line Project
Minnesota Power
39 Line Project – St. Louis County, Minnesota**

Dear <<Insert Contact Name>>:

Minnesota Power proposes to construct an approximate 3-mile-long, 115 kilovolt (kV) high voltage transmission line in St. Louis County near the City of Eveleth, Minnesota. This project is referred to as the 39 Line Project (Project). The Project is needed to provide a new source of power to the surrounding area as a result of United Taconite’s plans to expand its mining operation west of the City of Eveleth.

The purpose of this letter is to provide you notice of Minnesota Power’s plan to obtain a Route Permit from the Minnesota Public Utilities Commission (MPUC) for the proposed Project. Minnesota Power plans to submit a Route Permit Application (RPA) to the MPUC within the next few months. We request your questions or comments regarding the Project prior to filing the RPA with the MPUC.

Description of the Project

A Project map is attached for your reference (see **Figure 1**). The Project location is further described in the following table.

Township	Range	Sections	County
T58N	R17W	31	St. Louis
T57N	R17W	6	St. Louis
T58N	R18W	35, 36	St. Louis

The Project generally consists of constructing a new 115 kV transmission line from Minnesota Power’s existing 39 Line along the western edge of the City of Eveleth, around United Taconite’s existing north pit, west through the City of Leonidas, and connects with Minnesota Power’s existing 37 Line as shown on **Figure 1**. The proposed 115 kV transmission line will extend approximately 3 miles.

Minnesota Power would also, at the request of United Taconite, remove its existing 39 Line that runs through United Taconite’s north pit; also shown on **Figure 1**. Please note that Minnesota Power is in the process of evaluating routing information and collecting comments and input, and that the proposed route location shown on Figure 1 is preliminary and subject to change through this process.

The Project area is located in a primarily commercial/industrial use area, and is anticipated to be adjacent to existing road corridors for the majority of its length. Some residential development is also located within the Project area.

Depending upon the final selected route, the Project may cross over roads, small waterbodies, and wetlands. Much of the Project will be located on land owned by United Taconite who has assisted with the development of the preliminary route corridor. For new construction of the 39 Line, Minnesota Power plans to propose a 500-foot-wide route corridor with the MPUC. The proposed transmission line will occupy a 100-foot-wide right-of-way located within the 500-foot-wide route corridor.

Permitting Requirements

The proposed new 115 kV transmission line meets the definition of a High Voltage Transmission Line (HVTL) under Minn. Rules Chapter 7850.1000, subp. 9. Minnesota Power will apply for a Route Permit required for the Project which, qualifies for the Alternative Permitting Process under Minn. Stat. § 216E.04, subd. 2(3) and pursuant to Minn. Rules Chapter 7850.2800 to 7850.3900 (see Minn. Rules Chapter 7850.2800, subp. 1(C)), which Minnesota Power may elect to use.

The Route Permit proceedings will determine where the proposed facilities will be located. As part of the permitting process, the MPUC considers input from the applicant utility, interested stakeholders, local government units, state and federal agencies, and landowners who may be affected by the Project. Additional environmental review will occur during the routing process. The routing process will consider environmental, land use, and other potential routing impacts, and provide the opportunity for the public to comment.

An informational open house regarding this project is being held at the **Leonidas Community Center located at 201 1st Street, Eveleth, MN 55734 on Thursday, October 11, 2012 from 6:00PM to 7:30PM**. All members of the public are encouraged to attend. Please provide comments, questions, or concerns you may have regarding the proposed Project. I can be reached as follows:

Daniel McCourtney
Environmental Siting and Permitting
Allete/MN Power
30 West Superior St
Duluth, MN 55802
dmccourtney@allete.com
(218) 355-3515

I appreciate your assistance with this process. Please contact me if you have any questions or comments regarding the Project.

Sincerely,

Minnesota Power

A handwritten signature in black ink, appearing to read "Daniel McCourtney". The signature is fluid and cursive, with a long horizontal stroke at the end.

Daniel McCourtney
Environmental Siting and Permitting

Enclosures: Figure 1

**Minnesota Power
39 Line Project
Appendix C.1 - Project Notification Letter Recipients**

FEDERAL AND STATE AGENCIES						
Agency	Contact Name	Title	Address 1	City	State	Zip
St. Louis County Historical Society	Administrative Office	Administrative Office	506 West Michigan Street	Duluth	MN	55802
Minnesota Department of Agriculture	Gary Kuyava	St. Louis County Inspector	560 West Wabasha Road	Duluth	MN	55803
MN Department of Natural Resources Ecological and Water Resources - Region 2	Amy Loiselle	St. Louis Area Hydrologist	7979 Highway 37	Eveleth	MN	55734
MN Department of Natural Resources Lands and Minerals - Region 2	Joe Rokala	Regional Operations Supervisor	1201 East Highway 2	Grand Rapids	MN	55744
Minnesota Department of Natural Resources	Lisa Joyal	Natural Heritage Review Coordinator	500 Lafayette Road, Box 25	St. Paul	MN	55155
MN Pollution Control Agency Northeast Region	Suzanne Hanson	Duluth Region Manager	525 Lake Ave. South, Suite 400	Duluth	MN	55802
US Army Corps of Engineers - St. Louis County	Leslie Day	Project Manager	1554 Highway 2, Suite 2	Two Harbors	MN	55616
MN Department of Transportation - District 1	Beth Petrowske	Public Affairs Coordinator	1123 Mesaba Ave	Duluth	MN	55811
MN Department of Transportation - District 1	Duane Hill	District Engineer	1123 Mesaba Ave	Duluth	MN	55811
MN Public Utilities Commission	Dr. Burl Haar	Executive Secretary	127 7th Place East, Suite 350	St. Paul	MN	55101-2147
Eveleth-Virginia Municipal Airport	Gary Ulman	Airport Manager - Contact person	4280 Miller Trunk Road	Eveleth	MN	55734
U.S. Fish and Wildlife Service - Twin Cities	Tony Sullins	Field Supervisor	4101 American Boulevard E.	Bloomington	MN	55425

**Minnesota Power
39 Line Project
Appendix C.1 - Project Notification Letter Recipients**

FEDERAL AND STATE AGENCIES (cont'd)						
Agency	Contact Name	Title	Address 1	City	State	Zip
MN State Historic Preservation Office	Barbara Mitchell Howard	Deputy State Historic Preservation Officer	345 Kellogg Blvd W	St. Paul	MN	55102
Minnesota Office of the State Archaeologist	Scott Anfinson	State Archaeologist	Fort Snelling History Center	St. Paul	MN	55111-4061
Natural Resources Conservation Service - Minnesota	Don Baloun	State Conservationist	375 Jackson St., Suite 600	St. Paul	MN	55101

Minnesota Power
39 Line Project
Appendix C.1 - Project Notification Letter Recipients

LOCAL GOVERNMENT UNITS						
Agency	Contact Name	Title	Address 1	City	State	Zip
City of Eveleth	Robert Vlasisavljevich	Mayor	City Hall, 413 Pierce Street	Eveleth	MN	55734
City of Eveleth	Jackie Monahan-Junek	City Administrator	City Hall, 413 Pierce Street	Eveleth	MN	55734
City of Eveleth	Stephanie Friebe	Deputy Clerk	City Hall, 413 Pierce Street	Eveleth	MN	55734
City of Eveleth	Mike Wiskow	Public Works Director	City Hall, 413 Pierce Street	Eveleth	MN	55734
City of Eveleth	Eric Fallstrom	Benchmark Engineer	City Hall, 413 Pierce Street	Eveleth	MN	55734
City of Leonidas	David Trach	Mayor	139 2nd Street N	Eveleth	MN	55734
City of Leonidas	Joanne Mannikko	City Clerk	137 2nd street N	Eveleth	MN	55734
City of Mountain Iron	Jerry Kujala	Zoning Administrator	City Hall, 8586 Enterprise Drive South	Mountain Iron	MN	55768
City of Mountain Iron	Craig Wainio	City Administrator	City Hall, 8586 Enterprise Drive South	Mountain Iron	MN	55768
City of Mountain Iron	Michael Downs	Director of Public Works	City Hall, 8586 Enterprise Drive South	Mountain Iron	MN	55768
City of Mountain Iron	Gary Skalko	Mayor	City Hall, 8586 Enterprise Drive South	Mountain Iron	MN	55768
City of Mountain Iron	Anthony Zupancich	Economic Development President	City Hall, 8586 Enterprise Drive South	Mountain Iron	MN	55768
St. Louis County Environmental Services	Mark St. Lawrence	Environmental Administrator	307 First Street South Suite 115	Virginia	MN	55792
St. Louis County Environmental Services	Ted Troolin	Director	307 First Street South Suite 115	Virginia	MN	55792
St. Louis County Environmental Services	John Strukel	Solid Waste Supervisor	307 First Street South Suite 115	Virginia	MN	55792
St. Louis County Administration	Kevin Gray	County Administrator	100 N. 5th Ave W.	Duluth	MN	55802

**Minnesota Power
39 Line Project
Appendix C.1 - Project Notification Letter Recipients**

LOCAL GOVERNMENT UNITS (cont'd)						
Agency	Contact Name	Title	Address 1	City	State	Zip
St. Louis County Planning Commission	Jack Huhta	Planning Commission Chairman	307 S. First Street	Virginia	MN	55792
St. Louis County Planning Department	Mark Johnson	Local Water Planning Contact	227 West 1st Street	Duluth	MN	55802
St. Louis County Zoning Office	Scott Smith	County Zoning Contact	227 West 1st Street 100 Missabe Building	Duluth	MN	55802
St. Louis County Board	Keith Nelson	District 6 Commissioner	300 South 5th Ave	Virginia	MN	55792
St. Louis County Planning & Community Development	Barbara Hayden	Director	227 West 1st Street 100 Missabe Building	Duluth	MN	55802
St. Louis County Public Works	Jim Foldesi	Public Works Director	4787 Midway Road	Duluth	MN	55811
St. Louis County North Soil and Water Conservation District	Connie Olson	Office Administrator	230 1st Street South Suite 104B	Virginia	MN	55792
St. Louis County North Soil and Water Conservation District	John Calgaro	Board of Supervisors - District 4	230 1st Street South Suite 104B	Virginia	MN	55792
St. Louis County - Minnesota Wetland Conservation Act	Mark Lindhorst	WCA Contact	307 S. First Street	Virginia	MN	55792
St. Louis County Administrative	Tony Mancuso	Property Management Director	100 N. 5th Ave W.	Duluth	MN	55802
St. Louis County Land	Bob Krepps	Land Commissioner	320 West 2nd St. Room 607	Duluth	MN	55802
St. Louis County Public Works	Wayne Bergstedt	Engineering Tech Principal	4787 Midway Road	Duluth	MN	55811

Minnesota Power
39 Line Project
Appendix C.1 - Project Notification Letter Recipients

OTHER AFFECTED PARTIES						
Agency	Contact Name	Title	Address 1	City	State	Zip
City of Eveleth	Mary Beth Kafut	Library Director	614 Pierce Street	Eveleth	MN	55734
City of Mountain Iron	Sally Peterangelo	Library Director	City Hall, 8586 Enterprise Drive South	Mountain Iron	MN	55768

Minnesota Power
39 Line Project
Appendix C.1 - Project Notification Letter Recipients

LANDOWNERS				
Owner	Contact	Address	City	Zip
United Taconite	Tanaya Perpich	PO Box 180	Eveleth, MN	55734
RGGS	John Elofson	PO Box 1266	Virginia, MN	55792
Oliver Mining	C/O United Taconite-Tanaya Perpich	PO Box 180	Eveleth, MN	55734
OSI Environmental		14 County Rd 101	Eveleth, MN	55734
	Darren Bever	104 Kimberly Ave	Eveleth, MN	55734
	Jan Higgins	115 Kimberly Ave	Eveleth, MN	55734
	Tammy Klomps	116 Kimberly Ave	Eveleth, MN	55734
	Loe Michael	1305 E Main	Ely, MN	55731
	Gary Bontems	PO Box 692	Gilbert, MN	55741
	Daniel Rogers	PO Box 587	Eveleth, MN	55734
	Cindy Spartz	211 Fayal Ave	Eveleth, MN	55734
	Dan and Priscilla Triestman	611 Old Town Rd	Eveleth, MN	55734
	Della Fisher	601 Old Town Rd	Eveleth, MN	55734
	Leonard Belobaba	701 Old Town Rd	Eveleth, MN	55734
	Troy Devescovi	202 Cleveland St.	Eveleth, MN	55734
	Taconite Land Investments	201 Garfield St	Eveleth, MN	55734
	Greg Salmi	210 Cleveland St	Eveleth, MN	55734
	Peter Gornik	202 Garfield St	Eveleth, MN	55734
	Vernon & Leanna Laine	8587 Hwy 101	Eveleth, MN	55734

From: [Joyal, Lisa \(DNR\)](#)
To: [Naomi K. Christenson](#)
Subject: Minnesota Power 39 Line Project
Date: Monday, November 05, 2012 3:55:26 PM

I have reviewed your letter regarding the above project. I concur with your assessment that there are no known occurrences of rare features within a one-mile radius of the proposed project. The reference number for this correspondence is ERDB #20130144.

Thank you for notifying us of this project, and for the opportunity to provide comments.

Sincerely,

Lisa Joyal

~~~~~

Lisa Joyal  
Endangered Species Review Coordinator  
NHIS Data Distribution Coordinator  
Division of Ecological and Water Resources  
Minnesota Department of Natural Resources  
500 Lafayette Road, Box 25  
St. Paul, MN 55155

phone: 651-259-5109

[lisa.joyal@state.mn.us](mailto:lisa.joyal@state.mn.us)

[www.mndnr.gov/eco](http://www.mndnr.gov/eco)



## Minnesota Department of Transportation

1123 Mesaba Avenue  
Duluth, MN 55811-2798  
Office Tel: 218/725-2700  
Fax: 218/725-2800

101 North Hoover Road  
Virginia, MN 55792-3412  
Office Tel: 218/742-1100  
Fax: 218/749-7709

October 2, 2012

Daniel McCourtney  
Environmental Siting & Permitting  
Allete/Minnesota Power  
30 West Superior Street  
Duluth, MN 55802

Subject: C.S. 6918 (T.H. 53)  
Notice of Proposed Transmission Line Project  
Minnesota Power  
39 Line Project – St. Louis County, Minnesota

Dear Mr. McCourtney:

The Minnesota Department of Transportation (MnDOT) has reviewed the Minnesota Power 39 Line Project. The alignment, as proposed, has no impacts on any MnDOT facility or property. However, MnDOT is in the process of relocating Highway 53 between Cuyana Drive and Second Avenue in Virginia, Minnesota. A layout showing proposed routes is enclosed. If there is any change in the proposed route of Line 39, it should be coordinated with the Highway 53 relocation.

If you have any questions, please contact the Highway 53 Relocation Project Manager, Roberta Dwyer, at 218/725-2781 or [roberta.dwyer@state.mn.us](mailto:roberta.dwyer@state.mn.us).

Sincerely,

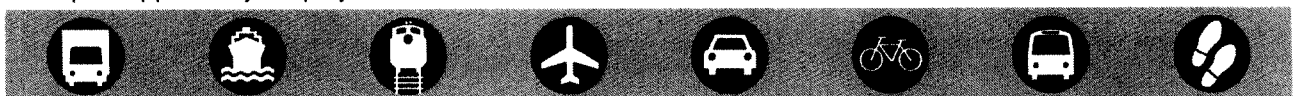
A handwritten signature in black ink that reads "Duane R. Hill".

Duane R. Hill, P.E.  
District Engineer

Enclosure

cc: R. Dwyer  
W. Scheer

An Equal Opportunity Employer





06/25/2012

**US Highway 53 Virginia to Eveleth  
Draft Environmental Impact Statement**

**DRAFT**

Exhibit 1  
Potential Section 4(f) or 6(f) Resources



**DEPARTMENT OF THE ARMY**  
ST. PAUL DISTRICT, CORPS OF ENGINEERS  
180 FIFTH STREET EAST, SUITE 700  
ST. PAUL MINNESOTA 55101-1678

REPLY TO  
ATTENTION OF

Operations  
Regulatory (2012-04253-LED)

October 4, 2012

Mr. Daniel McCourtney  
Allete/Minnesota Power  
30 West Superior Street  
Duluth, Minnesota 55800

Dear Mr. McCourtney:

Thank you for providing preliminary information, including a corridor map, for Minnesota Power's proposed 3-mile long 39 Line Project for Corps review and comments prior to the submittal of an application. As identified on the maps submitted to the Corps, the 39 Line Project would involve the installation of 115 kV high voltage overhead transmission line across Sections 35 and 36, T. 58N., R. 18W.; Section 31, T. 58N., R. 17W.; and Section 6, T. 57N., R. 17W., St. Louis County, Minnesota.

From the information provided, it appears that the project would involve the construction of a 500-foot-wide utility corridor across aquatic resources, including wetlands, and may involve the discharge of dredged or fill material in these resources. To assist you in the submittal of a complete application for this project, we are enclosing a list of information to provide in your application that will be necessary for the permit evaluation process. Upon the receipt of an application for this project, we will review the application and notify you of any additional information necessary to complete our review of the project.

If you have any questions, contact Ms. Leslie Day in our Two Harbors office at (218) 834-6630. In any correspondence or inquiries, please refer to the Regulatory number shown above.

Sincerely,

A handwritten signature in cursive script, appearing to read "Leslie Day".

<sup>204</sup>Tamara E. Cameron  
Chief, Regulatory Branch

Enclosure:  
Information List

## INFORMATION NEEDED FOR CORPS PERMIT APPLICATION REVIEW

### REQUIRED MAPS, DRAWINGS, OR PHOTOS -

- Show exact location of the transmission line within the right-of-way corridor
- Demonstrate that you have identified the wetlands in the project right-of-way corridor using sources that could include (but are not limited to): county soil survey data, interpreted infrared satellite images, aerial photography review, or state wetland inventory maps. Wetland boundaries should be ground truthed.
- Identify the wetland types in the project right-of-way corridor
- Identify all waterbody and waterway crossings along the project right-of-way corridor, which may include judicial ditches, intermittent tributaries, perennial unnamed tributaries, Section 10 waters, and tributaries to Section 10 waters

### FURTHER DESCRIPTIONS NEED -

- Demonstrate that you have minimized waterway and wetland impacts in the application; examples: using existing utility corridors, using already disturbed utility corridors, using maintained corridors, etc. Note: we may have already received some of this information.

### EXCAVATION/FILLING -

- Dimensions of excavation/fill areas along the project corridor in wetlands for the placement of overhead utility poles and/or other structures

### TEMPORARY FILL PLACEMENT -

- Determine whether there would be temporary placement of fill material; if so, identify the purpose of this fill, list exact location, and determine the dimensions/area of fill

### CONVERSION -

- Identify all areas within the corridor where vegetation clearing would result in the conversion of wetland types (and calculate areas of conversion by wetland type)
- Describe how vegetation removal (mechanized versus non-mechanized, equipment to be used) would be accomplished

### STRUCTURE -

- On overhead maps, identify the location (and discuss dimensions) of all proposed structure(s); utility poles/structures

### ADJOINING PROPERTY OWNERS -

- Names and address of adjoining property owners, lessees, etc.

### ALTERNATIVES -

- Explain why there are no alternative sites or methods available that would accomplish the intended purpose of the project but would not require placement of fill in the wetland

MITIGATION -

- Wetland mitigation measures may be needed for the discharge of dredged or fill material for the placement of utility poles and for the conversion of wetland Types along the project corridor. Mitigation ratios could be between 0.25:1 and 1.50:1 depending upon the impact.

OTHER -

The Section 106 process needs to be completed for this project before Corps permit would be issued.

The project would need to satisfy the state water quality standards/waivers and tribal water quality standards/exemptions.

The project should satisfy the Minnesota Lake Superior Coastal Program (MNDNR).

The U.S. Coast Guard may need notification for the placement of the fiber-optic cable beneath Section 10 waters, including Lake Superior.

The Corps of Engineers Detroit District may need to be notified for the placement of the fiber-optic cable in Lake Superior.

Please note that a 3<sup>rd</sup> party may need to ground-truth wetland areas along the project corridor.



STATE HISTORIC PRESERVATION OFFICE

October 16, 2012

Mr. Daniel McCourtney  
Minnesota Power  
30 West Superior Street  
Duluth, MN 55802-2093

RE: Minnesota Power 39 Line Project  
T58 R17 S31, T57 R17 S6, T58 R18 S25, 35, 36  
St. Louis County  
SHPO Number: 2013-0018

Dear Mr. McCourtney:

Thank you for the opportunity to review and comment on the above project. It has been reviewed pursuant to the responsibilities given the Minnesota Historical Society by the Minnesota Historic Sites Act and the Minnesota Field Archaeology Act.

Based on our review of the project information, we conclude that there are **no properties** listed in the National or State Registers of Historic Places, and no known or suspected archaeological properties in the area that will be affected by this project.

Please note that this comment letter does not address the requirements of Section 106 of the National Historic Preservation Act of 1966 and 36CFR800, Procedures of the Advisory Council on Historic Preservation for the protection of historic properties. If this project is considered for federal assistance, or requires a federal permit or license, it should be submitted to our office by the responsible federal agency.

Please contact our Compliance Section at (651) 259-3455 if you have any questions regarding our review of this project.

Sincerely,

A handwritten signature in black ink, appearing to read 'Mary Ann Heidemann'.

Mary Ann Heidemann, Manager  
Government Programs and Compliance

cc: Kari Krause, Merjent

## **APPENDIX D**

### Landowner List



**Minnesota Power  
39 Line Project  
Appendix D – Landowner List**

| <b>LANDOWNERS</b> |                                    |                   |              |            |
|-------------------|------------------------------------|-------------------|--------------|------------|
| <b>Owner</b>      | <b>Contact</b>                     | <b>Address</b>    | <b>City</b>  | <b>Zip</b> |
| United Taconite   | Tanaya Perpich                     | PO Box 180        | Eveleth, MN  | 55734      |
| RGGS              | John Elofson                       | PO Box 1266       | Virginia, MN | 55792      |
| Oliver Mining     | C/O United Taconite-Tanaya Perpich | PO Box 180        | Eveleth, MN  | 55734      |
| OSI Environmental |                                    | 14 County Rd 101  | Eveleth, MN  | 55734      |
|                   | Darren Bever                       | 104 Kimberly Ave  | Eveleth, MN  | 55734      |
|                   | Jan Higgins                        | 115 Kimberly Ave  | Eveleth, MN  | 55734      |
|                   | Tammy Klomps                       | 116 Kimberly Ave  | Eveleth, MN  | 55734      |
|                   | Loe Michael                        | 1305 E Main       | Ely, MN      | 55731      |
|                   | Gary Bontems                       | PO Box 692        | Gilbert, MN  | 55741      |
|                   | Daniel Rogers                      | PO Box 587        | Eveleth, MN  | 55734      |
|                   | Cindy Spartz                       | 211 Fayal Ave     | Eveleth, MN  | 55734      |
|                   | Dan and Priscilla Triestman        | 611 Old Town Rd   | Eveleth, MN  | 55734      |
|                   | Della Fisher                       | 601 Old Town Rd   | Eveleth, MN  | 55734      |
|                   | Leonard Belobaba                   | 701 Old Town Rd   | Eveleth, MN  | 55734      |
|                   | Troy Devescovi                     | 202 Cleveland St. | Eveleth, MN  | 55734      |
|                   | Taconite Land Investments          | 201 Garfield St   | Eveleth, MN  | 55734      |
|                   | Greg Salmi                         | 210 Cleveland St  | Eveleth, MN  | 55734      |
|                   | Peter Gornik                       | 202 Garfield St   | Eveleth, MN  | 55734      |
|                   | Vernon & Leanna Laine              | 8587 Hwy 101      | Eveleth, MN  | 55734      |