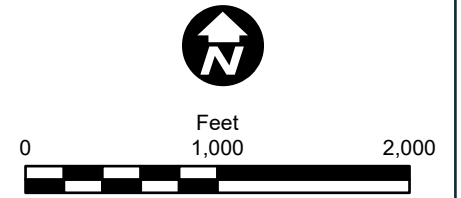
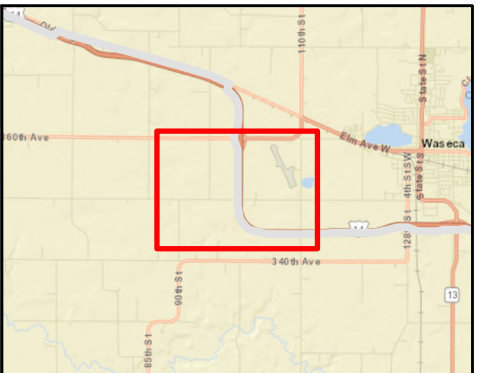
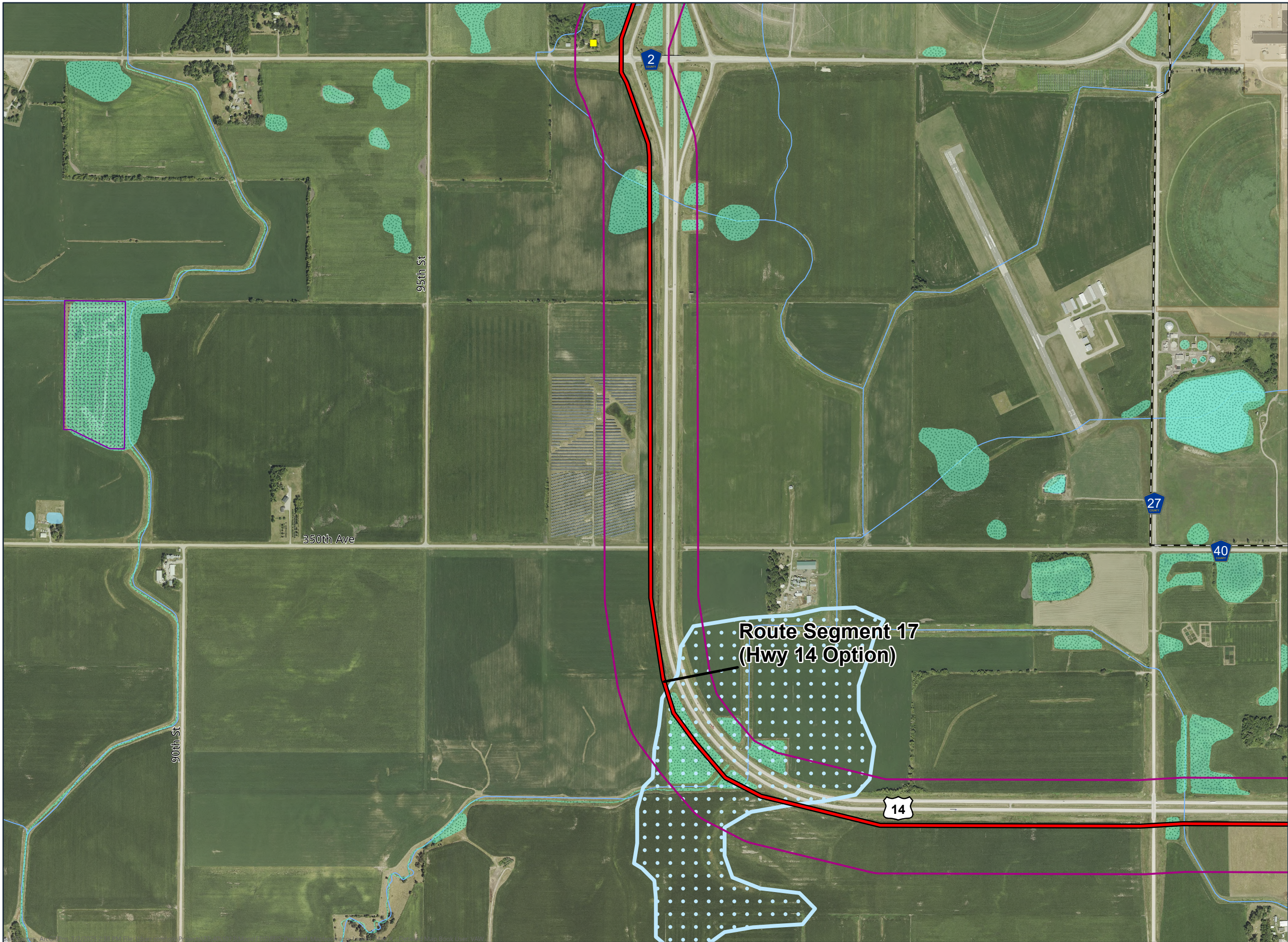
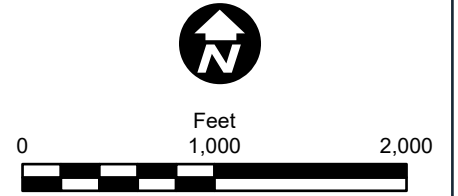


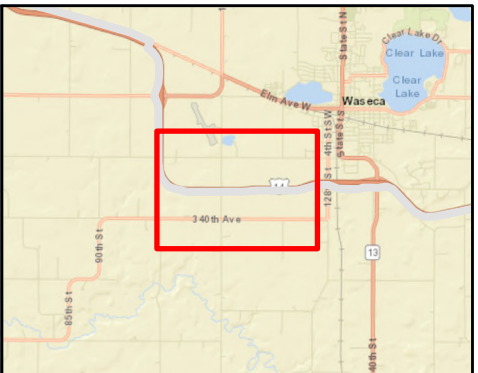
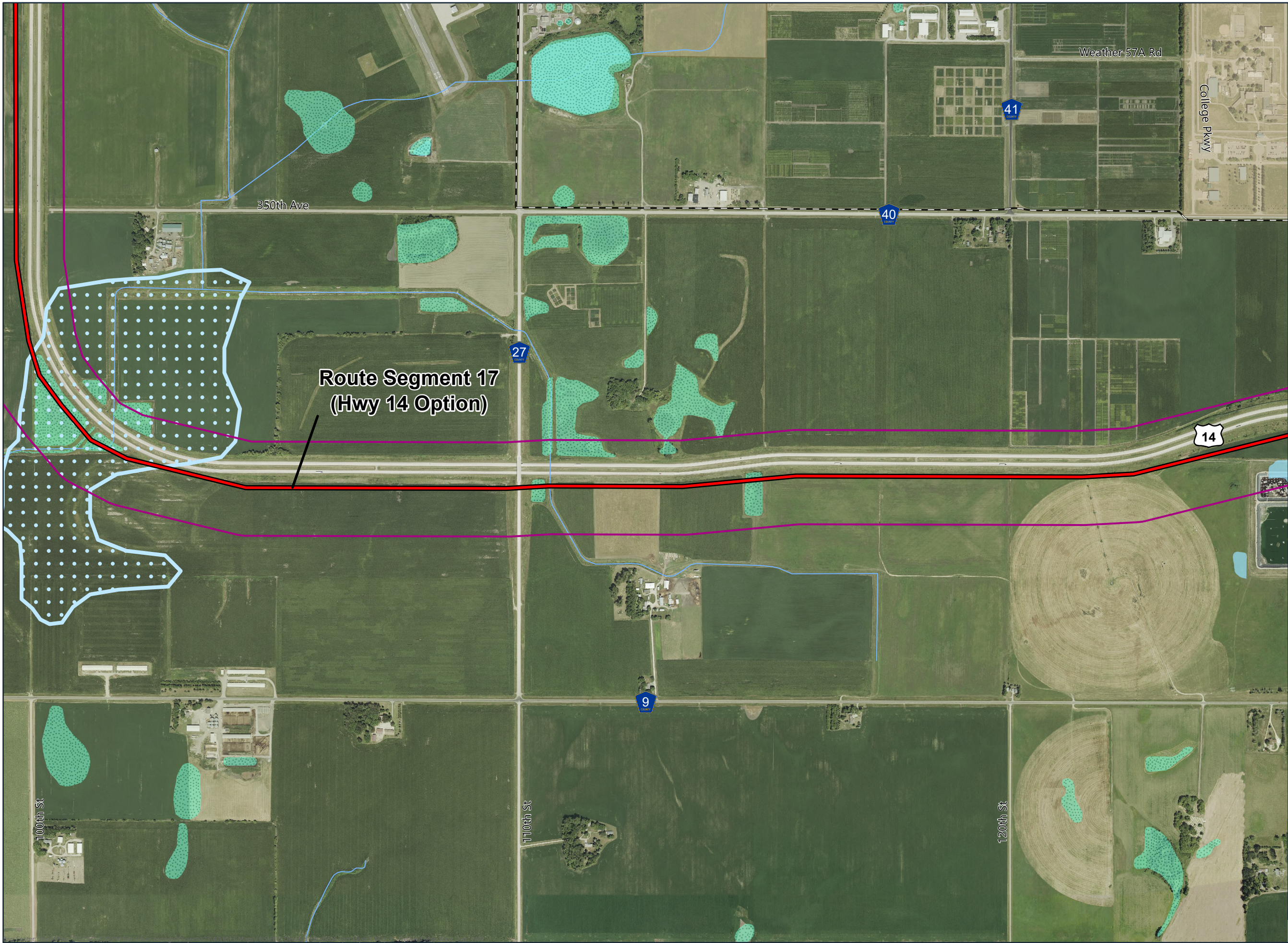
- Route Segment 17 (Hwy 14 Option)
- Route Width Expansion Area
- Non-Residential Structure
- Residence Location
- Minnesota Rail Lines
- NHD Watercourse
- Snowmobile Trail
- Forested Wetland
- Non-Forested Wetland
- NHD Waterbody
- Railroad Right-of-Way Prairies
- Native Plant Community
- National Wildlife Refuge
- Municipal Boundary
- Site of Biodiversity Significance**
 - Moderate Significance



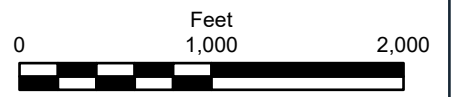


- Route Segment 17 (Hwy 14 Option)
- Route Width Expansion Area
- Residence Location
- NHD Watercourse
- Snowmobile Trail
- Shallow Wildlife Lake
- Non-Forested Wetland
- NHD Waterbody
- Federal Conservation Easement
- National Wildlife Refuge
- Municipal Boundary

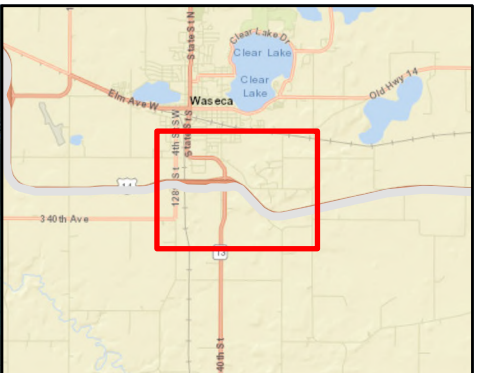
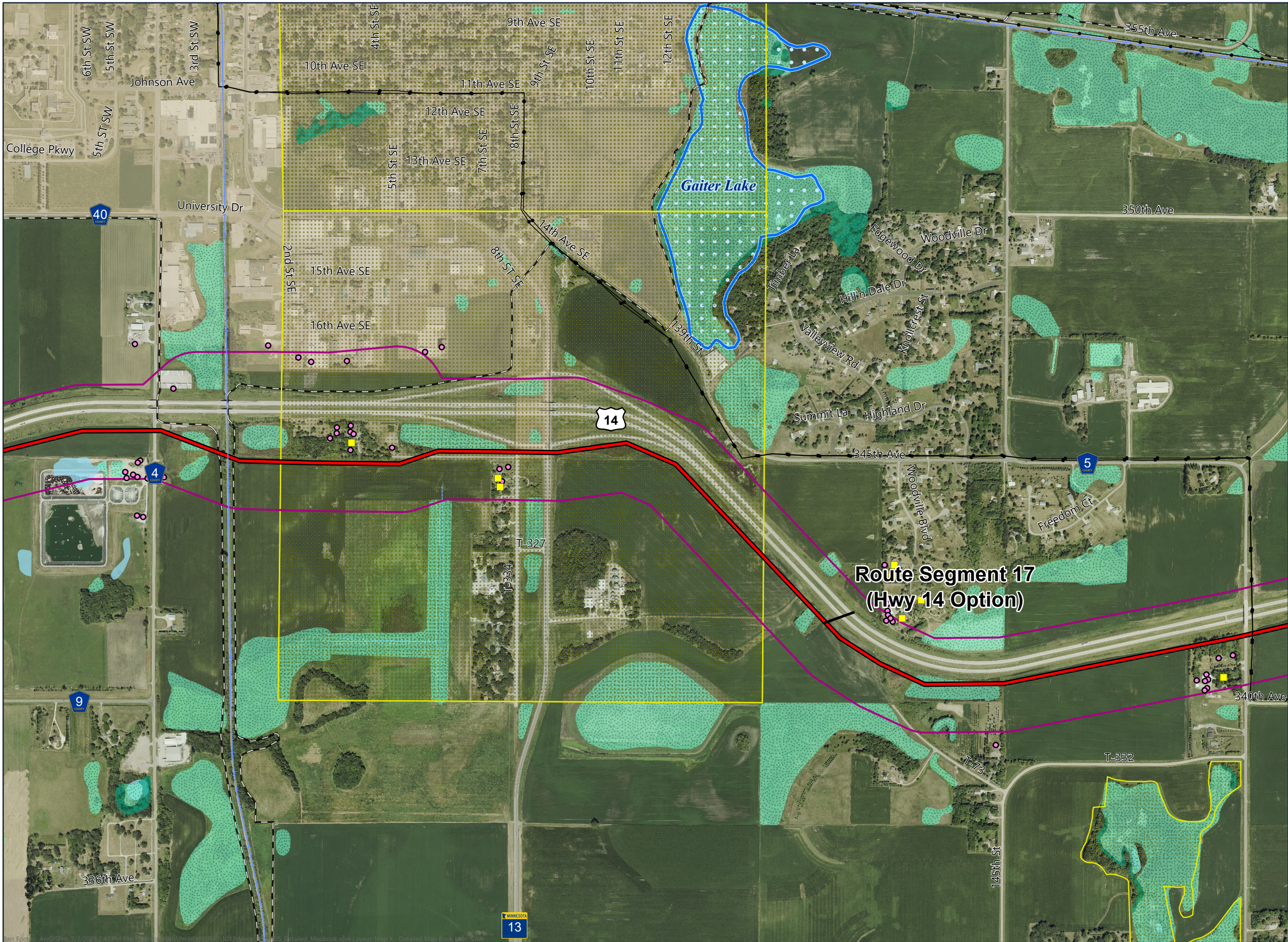




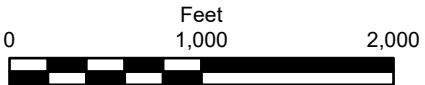
- Route Segment 17 (Hwy 14 Option)
- Route Width Expansion Area
- NHD Watercourse
- Snowmobile Trail
- Shallow Wildlife Lake
- Non-Forested Wetland
- NHD Waterbody
- National Wildlife Refuge
- Municipal Boundary



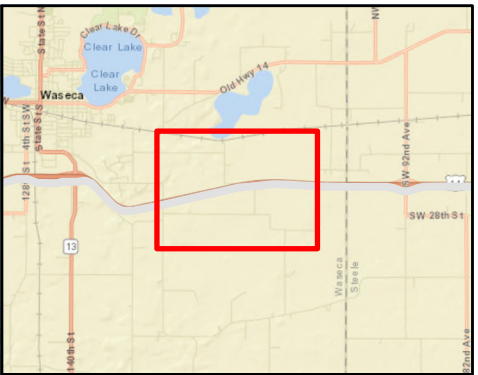
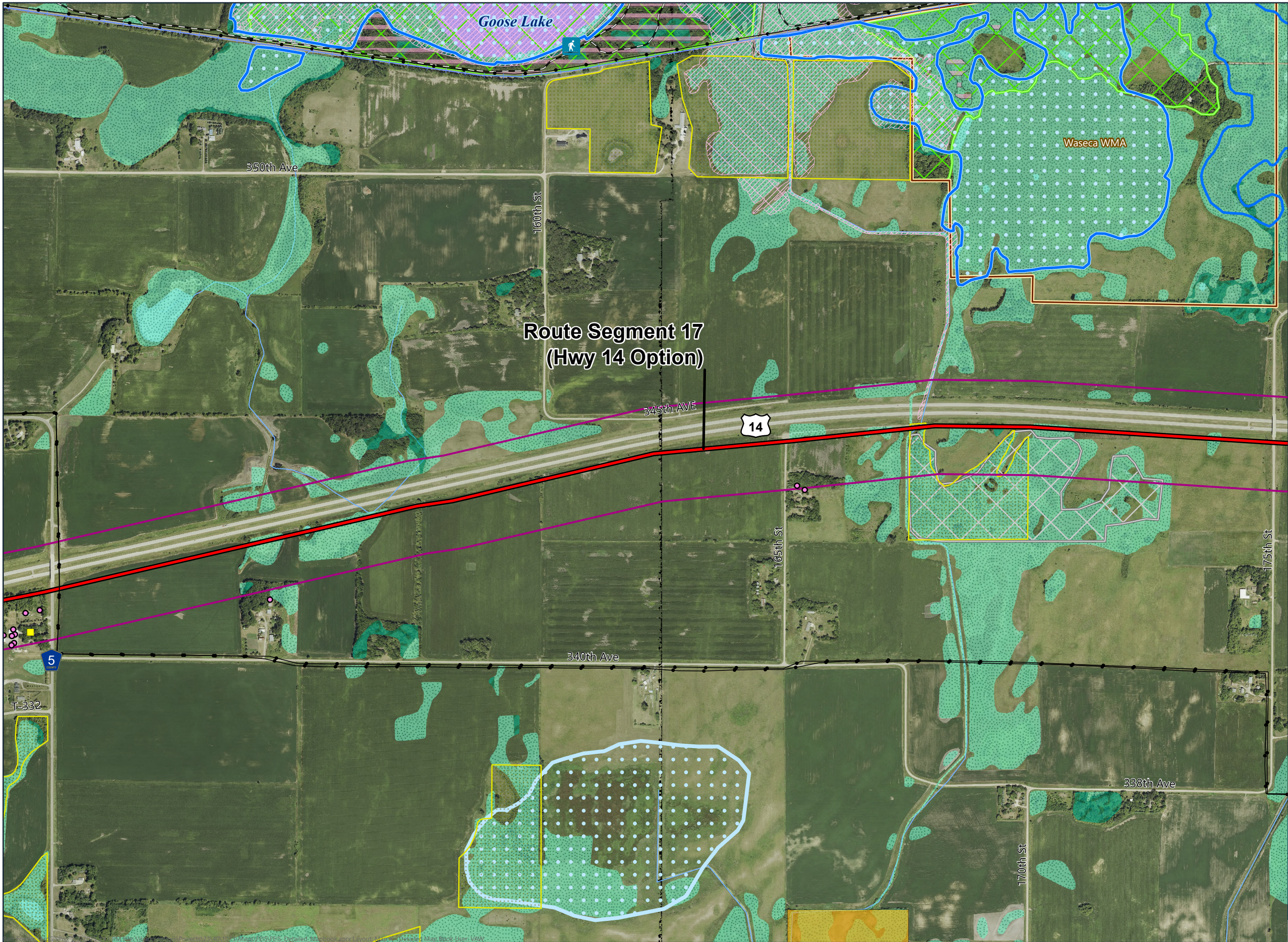
**ROUTE SEGMENT 17
(HWY 14 OPTION)
DETAILED MAPBOOK**
Mankato - Mississippi River
Transmission Line Project



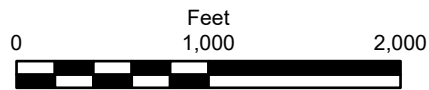
- Route Segment 17 (Hwy 14 Option)
- Route Width Expansion Area
- Non-Residential Structure
- Residence Location
- Existing Transmission Line
- Minnesota Rail Lines
- NHD Watercourse
- Snowmobile Trail
- PWI Waterbody
- Shallow Wildlife Lake
- Forested Wetland
- Non-Forested Wetland
- NHD Waterbody
- State Conservation Easements
- National Wildlife Refuge
- Municipal Boundary



**ROUTE SEGMENT 17
(HWY 14 OPTION)
DETAILED MAPBOOK**
Mankato - Mississippi River
Transmission Line Project



- Route Segment 17 (Hwy 14 Option)
- Route Width Expansion Area
- Carry-In
- Non-Residential Structure
- Residence Location
- Existing Transmission Line
- Minnesota Rail Lines
- NHD Watercourse
- Snowmobile Trail
- PWI Waterbody
- Shallow Wildlife Lake
- Forested Wetland
- Non-Forested Wetland
- Floodplains**
 - 100-Year Floodplain
 - NHD Waterbody
 - Wildlife Management Area
 - Native Plant Community
 - State Conservation Easements
 - Waterfowl Production Area
 - National Wildlife Refuge
- Site of Biodiversity Significance**
 - Moderate Significance
 - Below Minimum Significance
- Lakes of Biological Significance**
 - Moderate Significance



**ROUTE SEGMENT 17
(HWY 14 OPTION)
DETAILED MAPBOOK**
Mankato - Mississippi River
Transmission Line Project