



## Formal Natural Heritage Review - Cover Page

See next page for results of review. A draft watermark means the project details have not been finalized and the results are not official.

**Project Name:** Benton

**Project Proposer:** SWCA

**Project Type:** Power, Solar

**Project Type Activities:** Other

**TRS:** T36 R30 S26, T36 R30 S35

**County(s):** Benton

**DNR Admin Region(s):** Central

**Reason Requested:** PUC Site or Route Application

**Project Description:** proposed transmission line for a proposed solar facility in Benton County, Minnesota.

**Existing Land Uses:**

**Landcover / Habitat Impacted:**

**Waterbodies Affected:**

**Groundwater Resources Affected:**

**Previous Natural Heritage Review:** No

**Previous Habitat Assessments / Surveys:** No

### SUMMARY OF AUTOMATED RESULTS

Category	Results	Response By Category
<b>Project Details</b>	No Comments	No Further Review Required
<b>Ecologically Significant Area</b>	No Comments	No Further Review Required
<b>State-Listed Endangered or Threatened Species</b>	Needs Further Review	State-protected Species in Vicinity
<b>State-Listed Species of Special Concern</b>	Comments	Recommendations
<b>Federally Listed Species</b>	No Records	Visit IPaC For Federal Review



May 8, 2024

**Project Name:** Benton  
**Project Proposer:** SWCA  
**Project Type:** Power, Solar  
**Project ID:** MCE #2024-00427

**AUTOMATED RESULTS: FURTHER REVIEW IS NEEDED**

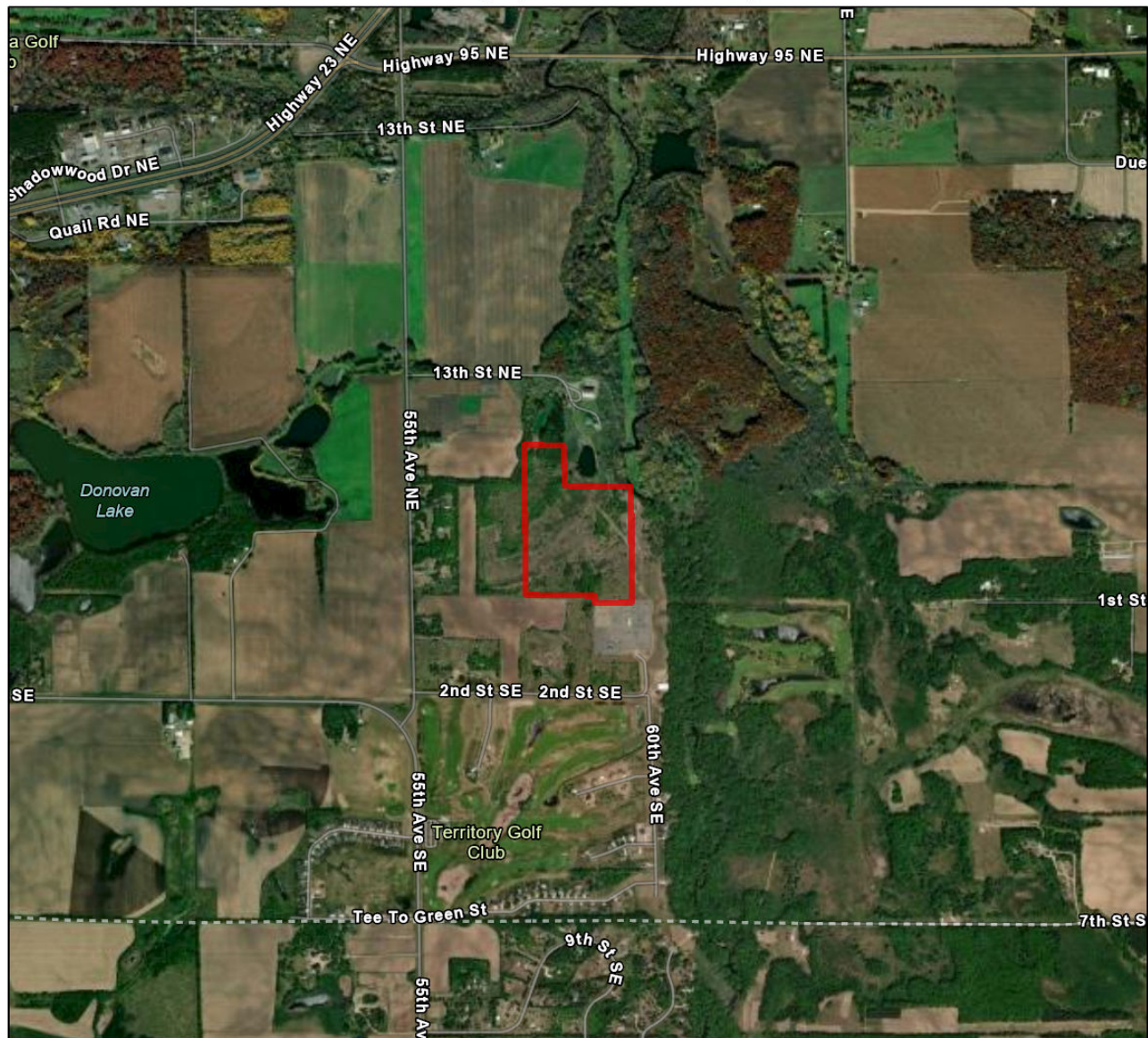
As requested, the above project has undergone an automated review for potential impacts to rare features. Based on this review, one or more rare features may be impacted by the proposed project and further review by the Natural Heritage Review Team is needed. You will receive a separate notification email when the review process is complete and the Natural Heritage Review letter has been posted.

Please refer to the table on the cover page of this report for a summary of potential impacts to rare features. For additional information or planning purposes, use the Explore Page in Minnesota Conservation Explorer to view the potentially impacted rare features or to create a Conservation Planning Report for the proposed project.

If you have additional information to help resolve the potential impacts listed in the summary results, please attach related project documentation in the Edit Details tab of the Project page. Relevant information includes, but is not limited to, additional project details, completed habitat assessments, or survey results. This additional information will be considered during the project review.

# Benton

Aerial Imagery With Locator Map



0 0.15 0.3 0.6 0.9 1.2 Miles

Project\_Boundary

Project Type: Power, Solar

Project Size (acres): 45.44

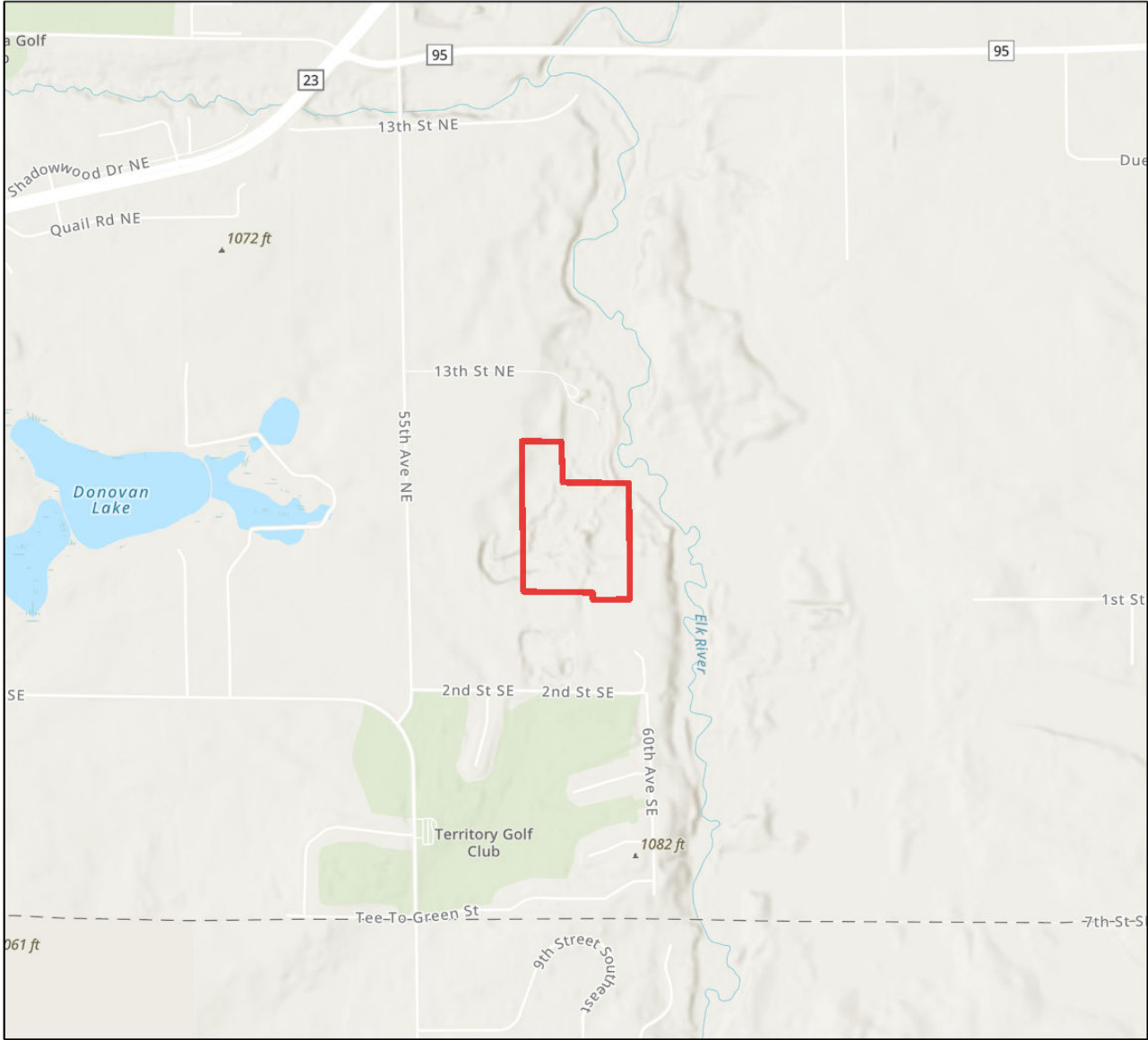
County(s): Benton

TRS: T36 R30 S26, T36 R30 S35

Esri, TomTom, Garmin, FAO, NOAA, USGS, EPA, USFWS  
Metropolitan Council, MetroGIS, Esri, TomTom, Garmin, SafeGraph,  
GeoTechnologies, Inc, METI/NASA, USGS, EPA, NPS, US Census Bureau,



Benton  
USA Topo Basemap With Locator Map



 Project\_Boundary

Project Type: Power, Solar

Project Size (acres): 45.44

County(s): Benton

TRS: T36 R30 S26, T36 R30 S35

Esri, TomTom, Garmin, FAO, NOAA, USGS, EPA, USFWS  
Metropolitan Council, MetroGIS, Esri, TomTom, Garmin, SafeGraph,  
GeoTechnologies, Inc, METI/NASA, USGS, EPA, NPS, US Census Bureau,

