

Source: Esri, i-cubed, USDA, USGS, AEX, GeoEye, Getmapping, Aerogrid, IGN, IGP, and the GIS User Community

Proposed Great River Energy
115 kV Transmission Line
 MV-PN North Segment
 Existing Great River Energy
69 kV Transmission Line
 300' route width

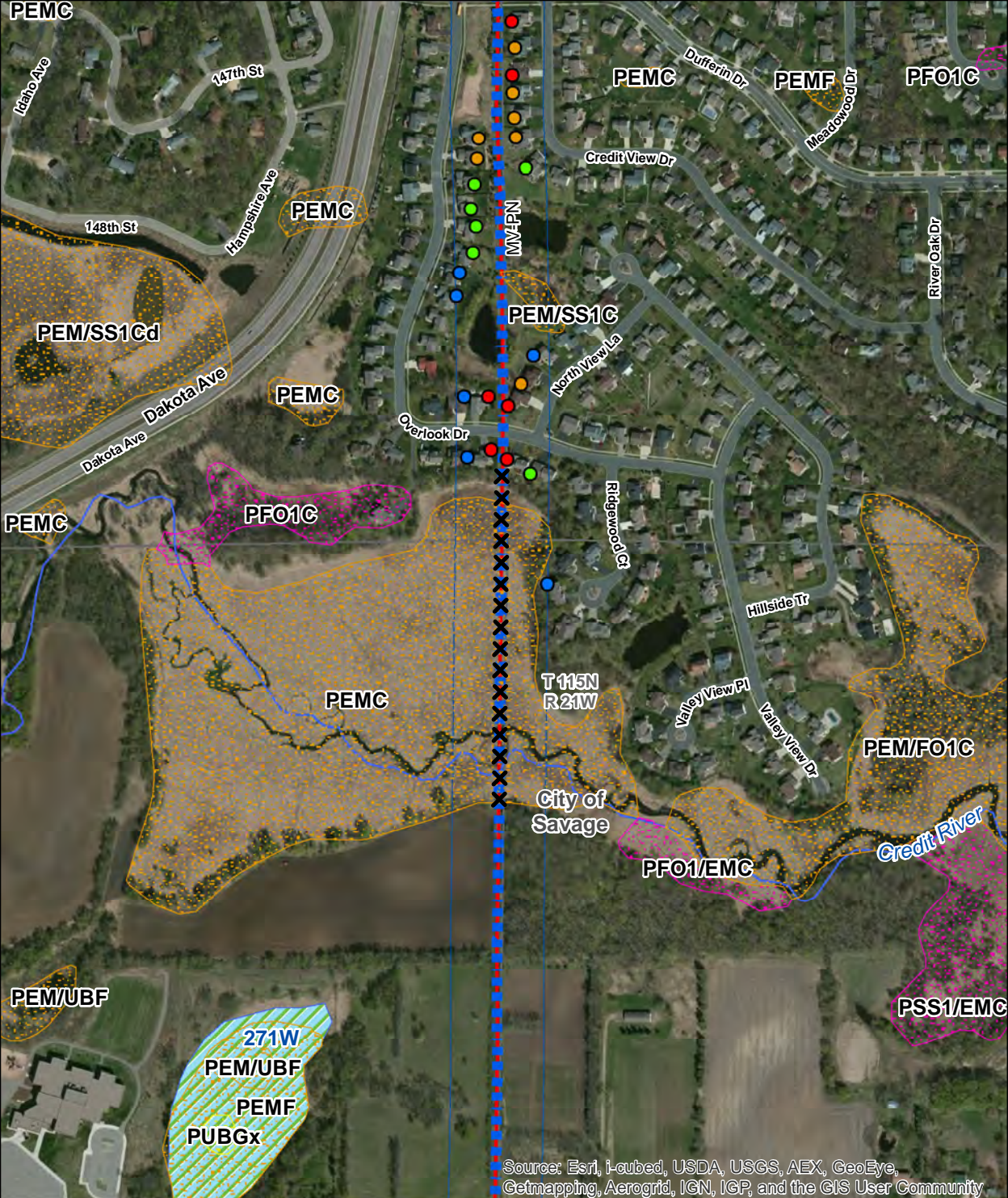
Residence
 within 150' (5)
 within 100' (7)
 within 75' (5)
 within 50' (1)
 Business
 within 100' (1)
 Non-Residential Building
 within 50' (1)

NWI Wetlands
 Freshwater Emergent Wetland
 Freshwater Forested/Shrub Wetland
 Freshwater Pond
 Park
 Public Water Wetland

Elko New Market and Cleary Lake Areas Project Prior Lake Junction to Credit River Junction Map Series 1 of 5

GIS Data sources include:
MNGEO, MNDNR, MNDOT,
and Great River Energy.
Aerial Imagery from ESRI web service

0 100 200 Feet



Source: Esri, i-cubed, USDA, USGS, AEX, GeoEye, Getmapping, Aerogrid, IGN, IGP, and the GIS User Community

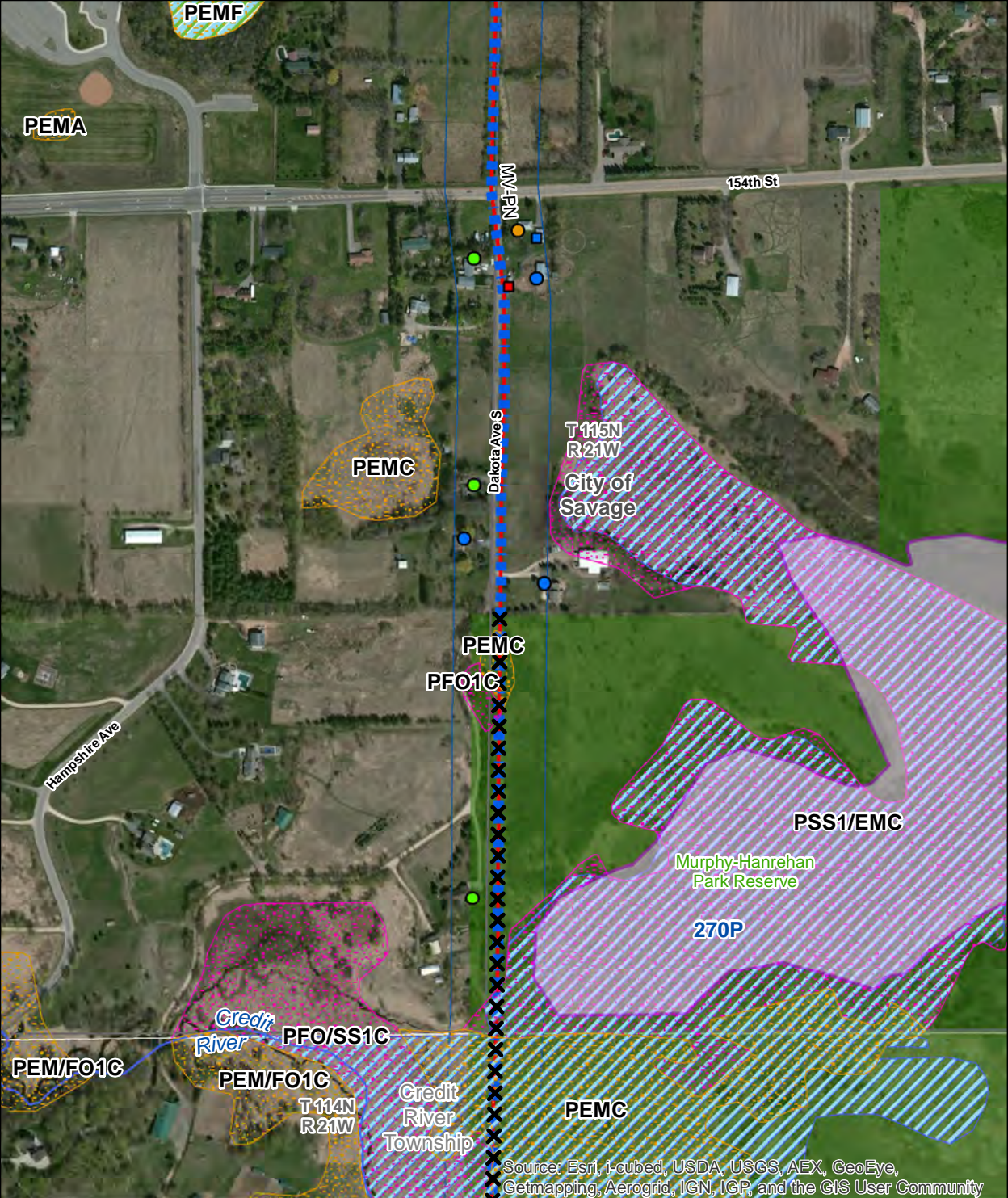
- Proposed Great River Energy 115 kV Transmission Line
- MV-PN North Segment
- Existing Great River Energy 69 kV Transmission Line
- 300' route width
- ✕✕ Potential Bird Diverter Locations

- | | |
|-------------------|-------------------------------------|
| Residence | NWI Wetlands |
| ● within 150' (6) | ■ Freshwater Emergent Wetland |
| ● within 100' (6) | ■ Freshwater Forested/Shrub Wetland |
| ● within 75' (7) | ■ Freshwater Pond |
| ● within 50' (6) | ■ Public Watercourse |
| | ■ Public Water Wetland |

Elko New Market and Cleary Lake Areas Project Prior Lake Junction to Credit River Junction Map Series 2 of 5

GIS Data sources include: MNGEO, MNDNR, MNDOT, and Great River Energy. Aerial Imagery from ESRI web service

0 100 200 Feet



Source: Esri, i-cubed, USDA, USGS, AEX, GeoEye, Getmapping, Aerogrid, IGN, IGP, and the GIS User Community

- Proposed Great River Energy
115 kV Transmission Line
- MV-PN North Segment
- Existing Great River Energy
69 kV Transmission Line
- 300' route width
- ✕✕ Potential Bird Diverter Locations

- Residence
- within 150' (3)
- within 100' (3)
- within 75' (1)
- Non-Residential Building
- within 150' (1)
- within 50' (1)

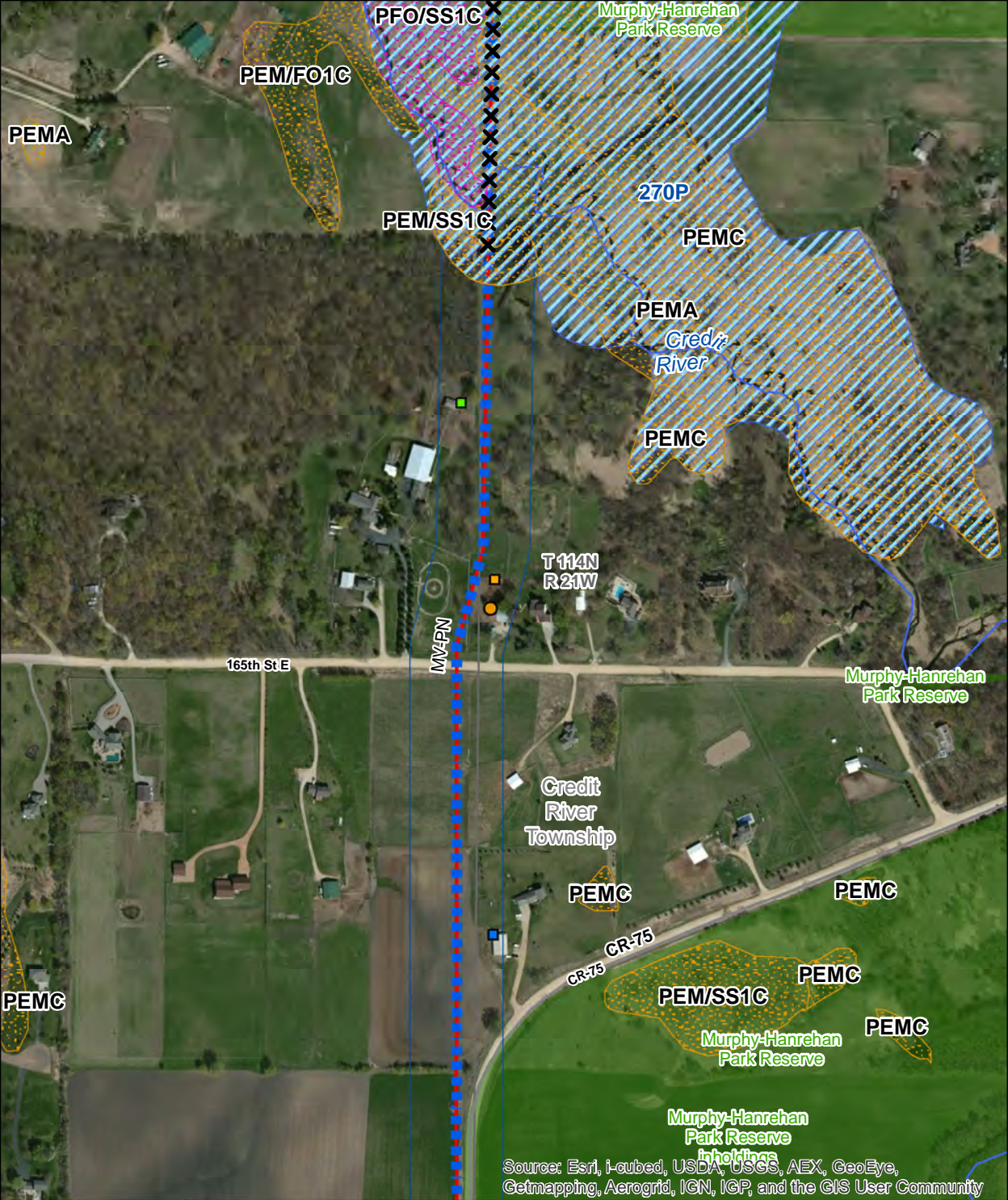
- NWI Wetlands
- Freshwater Emergent Wetland
- Freshwater Forested/Shrub Wetland
- Park
- Biodiversity Significance
- Outstanding
- Public Watercourse
- Public Water Wetland
- Public Water Basin

**Elko New Market and
Cleary Lake Areas Project
Prior Lake Junction to
Credit River Junction
Map Series 3 of 5**

0 100 200 Feet

N

GIS Data sources include:
MNGEO, MNDNR, MNDOT,
and Great River Energy.
Aerial Imagery from ESRI web service



<p>Proposed Great River Energy 115 kV Transmission Line</p> <p>MV-PN North Segment</p> <p>Existing Great River Energy 69 kV Transmission Line</p> <p>300' route width</p> <p>Potential Bird Diverter Locations</p>	<p>Residence</p> <ul style="list-style-type: none"> ● within 75' (1) <p>Non-Residential Building</p> <ul style="list-style-type: none"> ■ within 150' (1) ■ within 100' (1) ■ within 75' (1) 	<p>NWI Wetlands</p> <ul style="list-style-type: none"> Freshwater Emergent Wetland Freshwater Forested/Shrub Wetland Park Public Watercourse Public Water Basin 	<p>Elko New Market and Cleary Lake Areas Project Prior Lake Junction to Credit River Junction Map Series 4 of 5</p>
<p>Source: Esri, i-cubed, USDA, USGS, AEX, GeoEye, Getmapping, Aerogrid, IGN, IGP, and the GIS User Community</p> <p>0 100 200 Feet</p>			<p>GIS Data sources include: MNGEO, MNDNR, MNDOT, and Great River Energy. Aerial Imagery from ESRI web service</p>



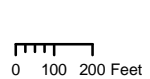
Source: Esri, i-cubed, USDA, USGS, AEX, GeoEye, Getmapping, Aerogrid, IGN, IGP, and the GIS User Community

Proposed Great River Energy
115 kV Transmission Line
■ MV-PN North Segment
Existing Great River Energy
69 kV Transmission Line
□ 300' route width

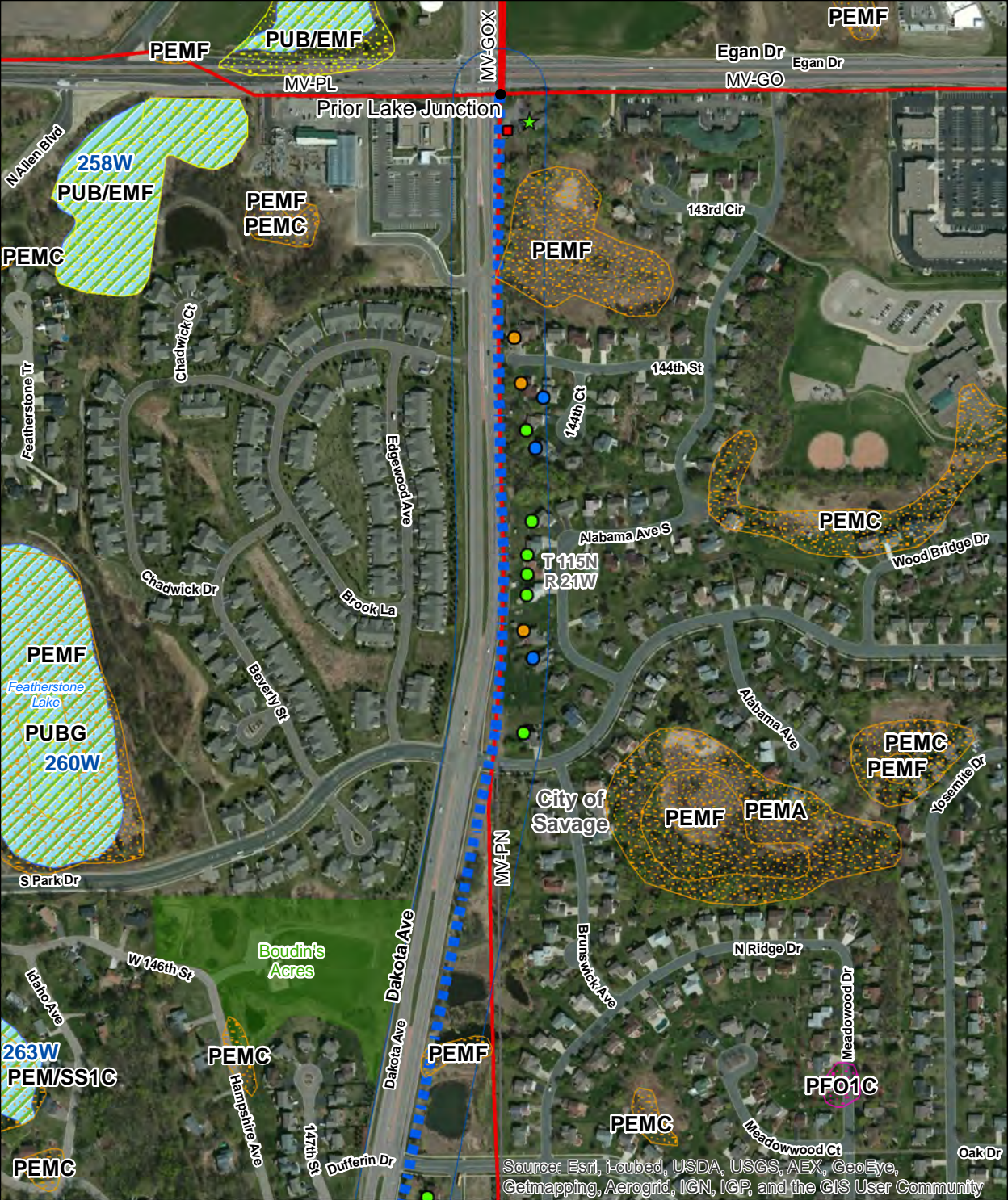
Residence
● within 150' (1)
● within 100' (1)
Non-Residential Building
■ within 150' (4)

NWI Wetlands
■ Freshwater Emergent Wetland
■ Park
— Public Watercourse

**Elko New Market and
Cleary Lake Areas Project
Prior Lake Junction to
Credit River Junction
Map Series 5 of 5**



GIS Data sources include:
MNGEO, MNDNR, MNDOT,
and Great River Energy.
Aerial Imagery from ESRI web service



Source: Esri, i-cubed, USDA, USGS, AEX, GeoEye, Getmapping, Aerogrid, IGN, IGP, and the GIS User Community

Proposed Great River Energy
115 kV Transmission Line
 MV-PN North Deviation Segment
 Existing Great River Energy
 69 kV Transmission Line
 300' route width

Residence
 within 150' (3)
 within 100' (7)
 within 75' (3)
 Business
 within 100' (1)
 Non-Residential Building
 within 50' (1)

NWI Wetlands
 Freshwater Emergent Wetland
 Freshwater Forested/Shrub Wetland
 Freshwater Pond
 Park
 Public Water Wetland

**Elko New Market and
Cleary Lake Areas Project
Prior Lake Junction to
Credit River Junction with Deviation
Map Series 1 of 6**

GIS Data sources include:
MNGEO, MNDNR, MNDOT,
and Great River Energy.
Aerial Imagery from ESRI web service

0 100 200 Feet



Source: Esri, i-cubed, USDA, USGS, AEX, GeoEye, Getmapping, Aerogrid, IGN, IGP, and the GIS User Community

<p>Proposed Great River Energy 115 kV Transmission Line</p> <p>Existing Great River Energy 69 kV Transmission Line</p> <p>300' route width</p> <p>Potential Bird Diverter Locations</p>	<p>Residence</p> <ul style="list-style-type: none"> ● within 150' (6) ● within 100' (9) ● within 75' (1) 	<p>NWI Wetlands</p> <ul style="list-style-type: none"> Freshwater Emergent Wetland Freshwater Forested/Shrub Wetland Freshwater Pond Park Public Watercourse Public Water Wetland 	<p>Elko New Market and Cleary Lake Areas Project Prior Lake Junction to Credit River Junction with Deviation Map Series 2 of 6</p> <p>GIS Data sources include: MNGEO, MNDNR, MNDOT, and Great River Energy. Aerial Imagery from ESRI web service</p>
<p>0 100 200 Feet</p>		<p>N</p>	



Source: Esri, i-cubed, USDA, USGS, AEX, GeoEye, Getmapping, Aerogrid, IGN, IGP, and the GIS User Community

Proposed Great River Energy
 115 kV Transmission Line
 MV-PN North Deviation Segment
 Existing Great River Energy
 69 kV Transmission Line
 300' route width
 Potential Bird Diverter Locations

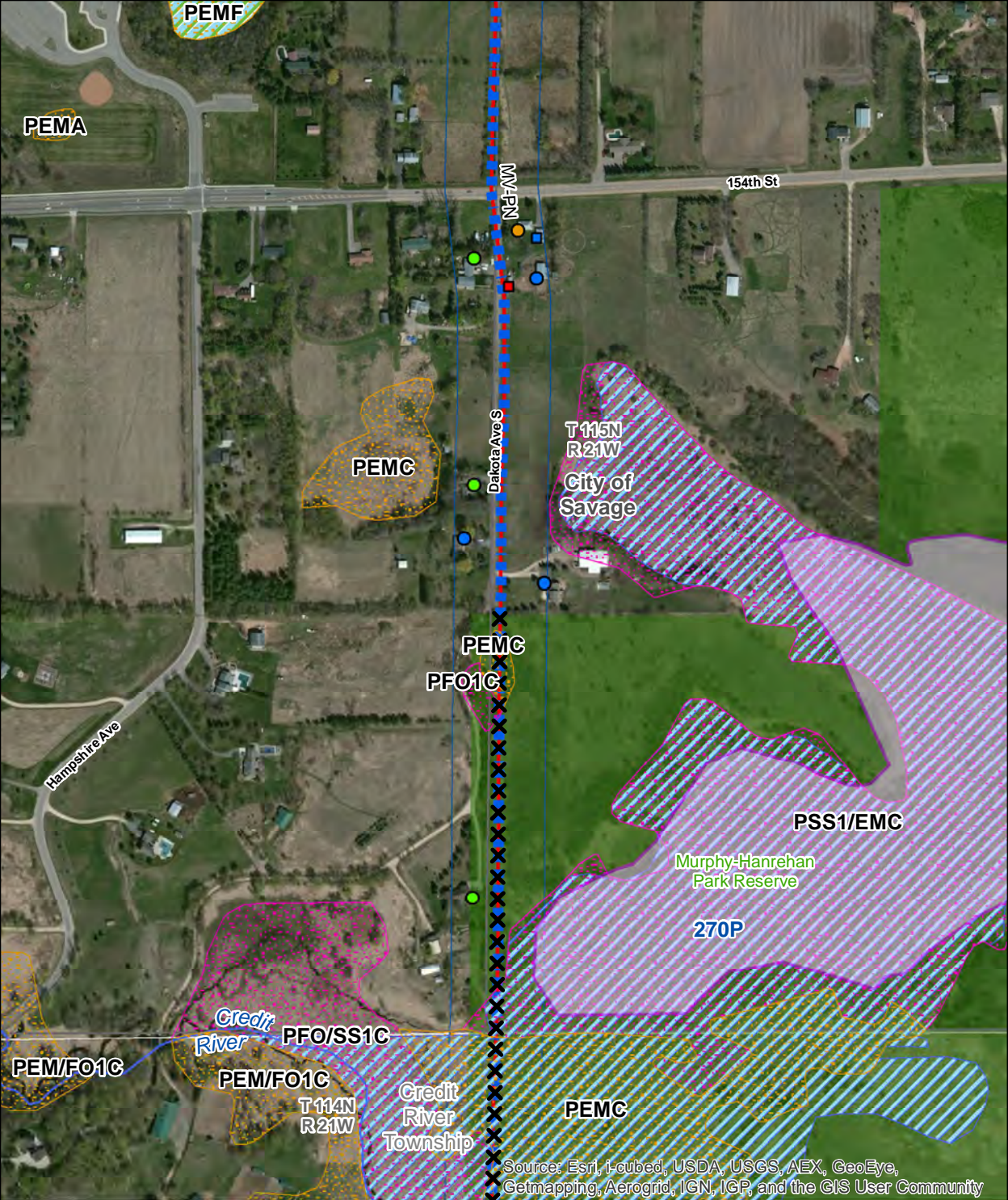
Residence
 within 150' (5)
 within 100' (8)
 within 75' (1)

NWI Wetlands
 Freshwater Emergent Wetland
 Freshwater Forested/Shrub Wetland
 Freshwater Pond
 Public Watercourse
 Public Water Wetland

**Elko New Market and
 Cleary Lake Areas Project
 Prior Lake Junction to
 Credit River Junction with Deviation
 Map Series 3 of 6**

GIS Data sources include:
 MNGEO, MNDNR, MNDOT,
 and Great River Energy.
 Aerial Imagery from ESRI web service

0 100 200 Feet



Source: Esri, i-cubed, USDA, USGS, AEX, GeoEye, Getmapping, Aerogrid, IGN, IGP, and the GIS User Community

- Proposed Great River Energy
115 kV Transmission Line
- MV-PN North Deviation Segment
- Existing Great River Energy
— 69 kV Transmission Line
- 300' route width
- ✕✕ Potential Bird Diverter Locations

- Residence
- within 150' (3)
- within 100' (3)
- within 75' (1)
- Non-Residential Building
- within 150' (1)
- within 50' (1)

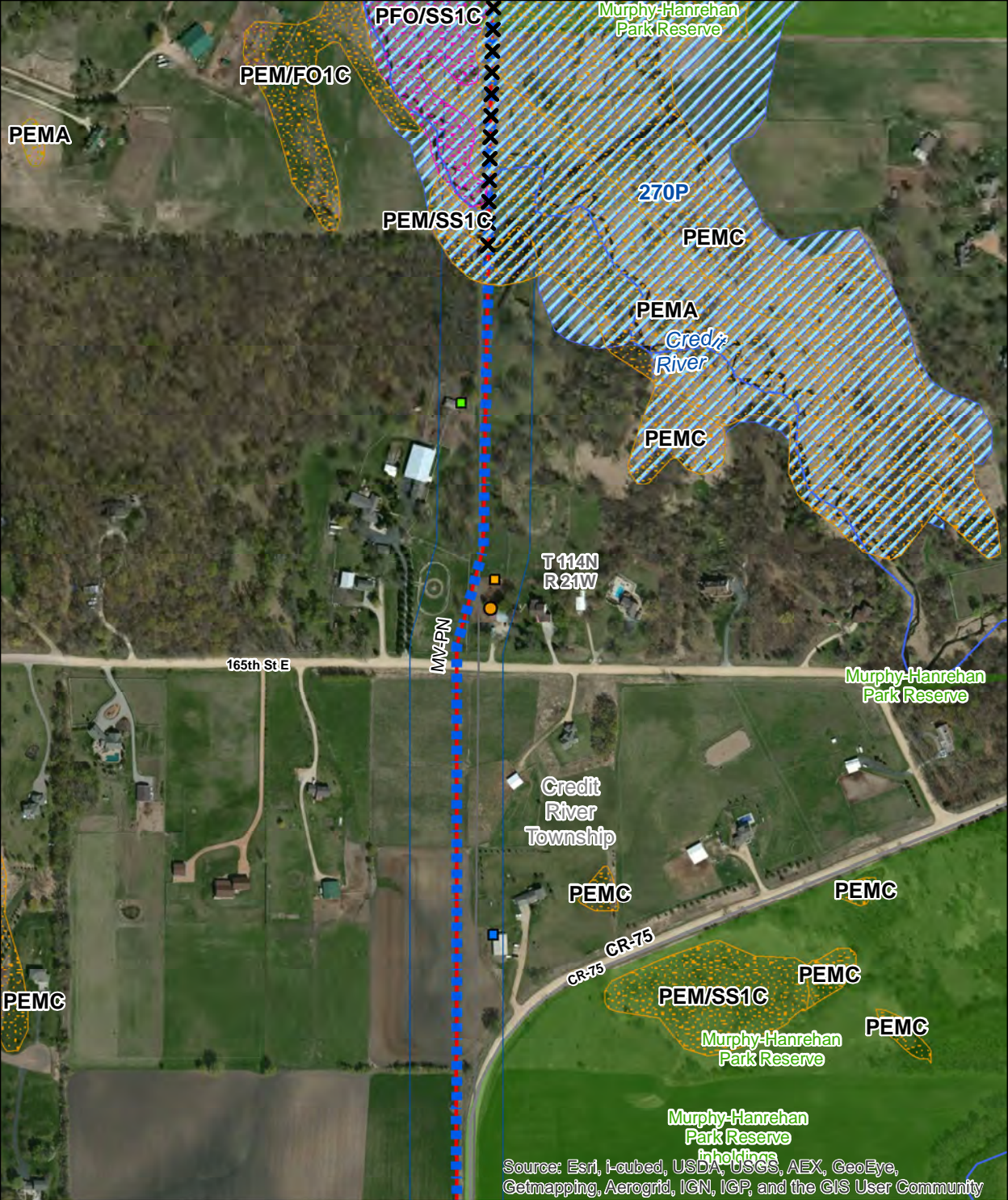
- NWI Wetlands
- Freshwater Emergent Wetland
- Freshwater Forested/Shrub Wetland
- Park
- Biodiversity Significance
- Outstanding
- Public Watercourse
- Public Water Wetland
- Public Water Basin

**Elko New Market and
Cleary Lake Areas Project
Prior Lake Junction to
Credit River Junction with Deviation
Map Series 4 of 6**

0 100 200 Feet

N
Aerial Imagery from ESRI web service

GIS Data sources include:
MNGEO, MNDNR, MNDOT,
and Great River Energy.



Source: Esri, i-cubed, USDA, USGS, AEX, GeoEye, Getmapping, Aerogrid, IGN, IGP, and the GIS User Community

- Proposed Great River Energy 115 kV Transmission Line
- MV-PN North Deviation Segment
- Existing Great River Energy 69 kV Transmission Line
- 300' route width
- Potential Bird Diverter Locations

- Residence within 75' (1)
- Non-Residential Building within 150' (1)
- within 100' (1)
- within 75' (1)

- NWI Wetlands Freshwater Emergent Wetland
- Freshwater Forested/Shrub Wetland
- Park
- Public Watercourse
- Public Water Basin

Elko New Market and Cleary Lake Areas Project

Prior Lake Junction to Credit River Junction with Deviation

Map Series 5 of 6

GIS Data sources include: MNGEO, MNDNR, MNDOT, and Great River Energy.
Aerial Imagery from ESRI web service

0 100 200 Feet



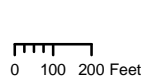
Source: Esri, i-cubed, USDA, USGS, AEX, GeoEye, Getmapping, Aerogrid, IGN, IGP, and the GIS User Community

Proposed Great River Energy
115 kV Transmission Line
MV-PN North Deviation Segment
Existing Great River Energy
69 kV Transmission Line
300' route width

Residence
within 150' (1)
within 100' (1)
Non-Residential Building
within 150' (4)

NWI Wetlands
Freshwater Emergent Wetland
Park
Public Watercourse




**Elko New Market and
Cleary Lake Areas Project
Prior Lake Junction to
Credit River Junction with Deviation
Map Series 6 of 6**







GIS Data sources include:
MNGEO, MNDNR, MNDOT,
and Great River Energy.
Aerial Imagery from ESRI web service



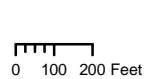
Source: Esri, i-cubed, USDA, USGS, AEX, GeoEye, Getmapping, Aerogrid, IGN, IGP, and the GIS User Community

Proposed Great River Energy
115 kV Transmission Line
 MV-CR Segment
 Existing Great River Energy
 69 kV Transmission Line
 300' route width

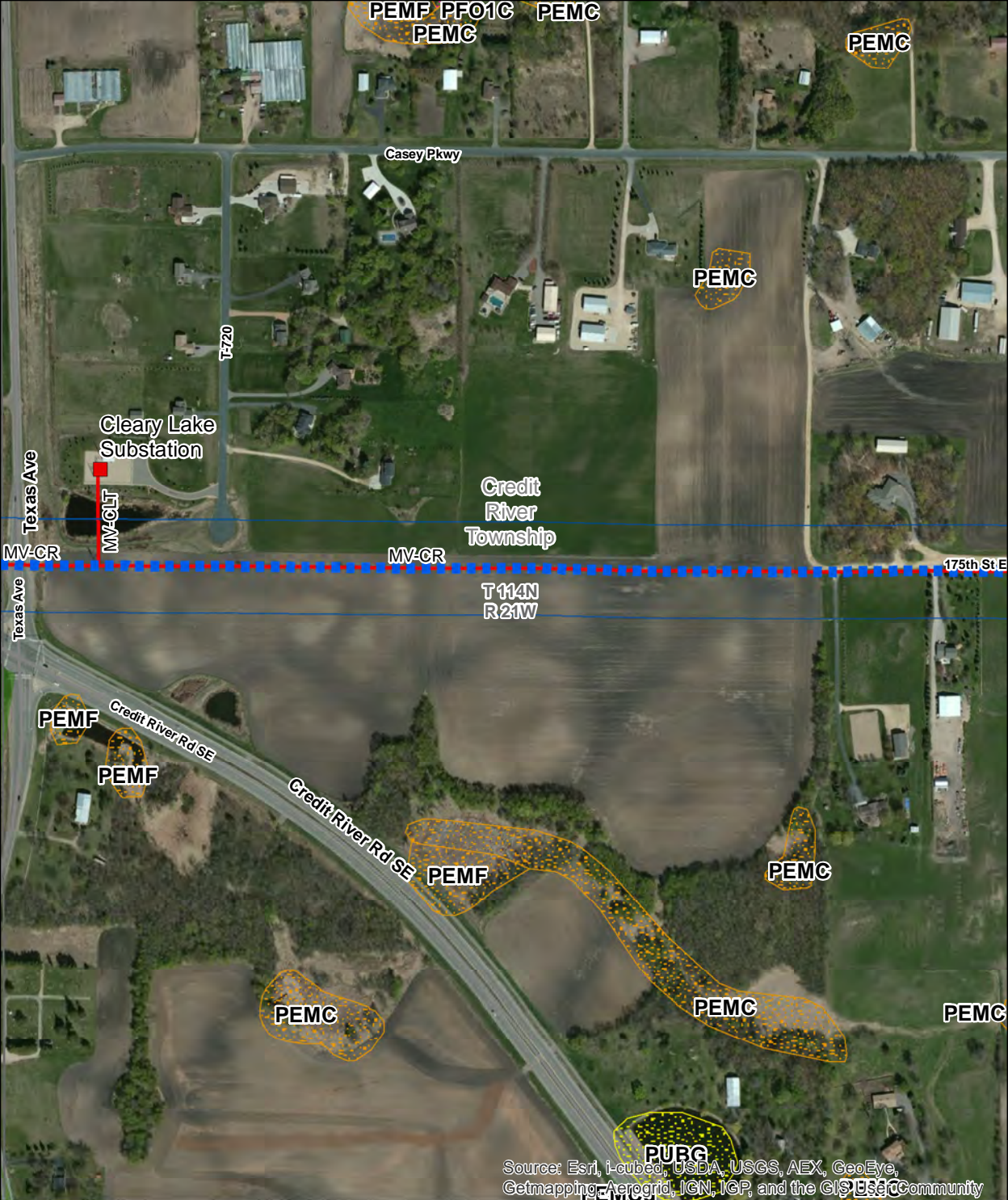
Non-Residential Building
 within 150' (1)

NWI Wetlands
 Freshwater Emergent Wetland
 Freshwater Pond
 Park

**Elko New Market and
Cleary Lake Areas Project
Credit River Junction to
Credit River Substation
Map Series 1 of 4**



GIS Data sources include:
 MNGEO, MNDNR, MNDOT,
 and Great River Energy.
 Aerial Imagery from ESRI web service

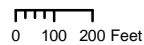


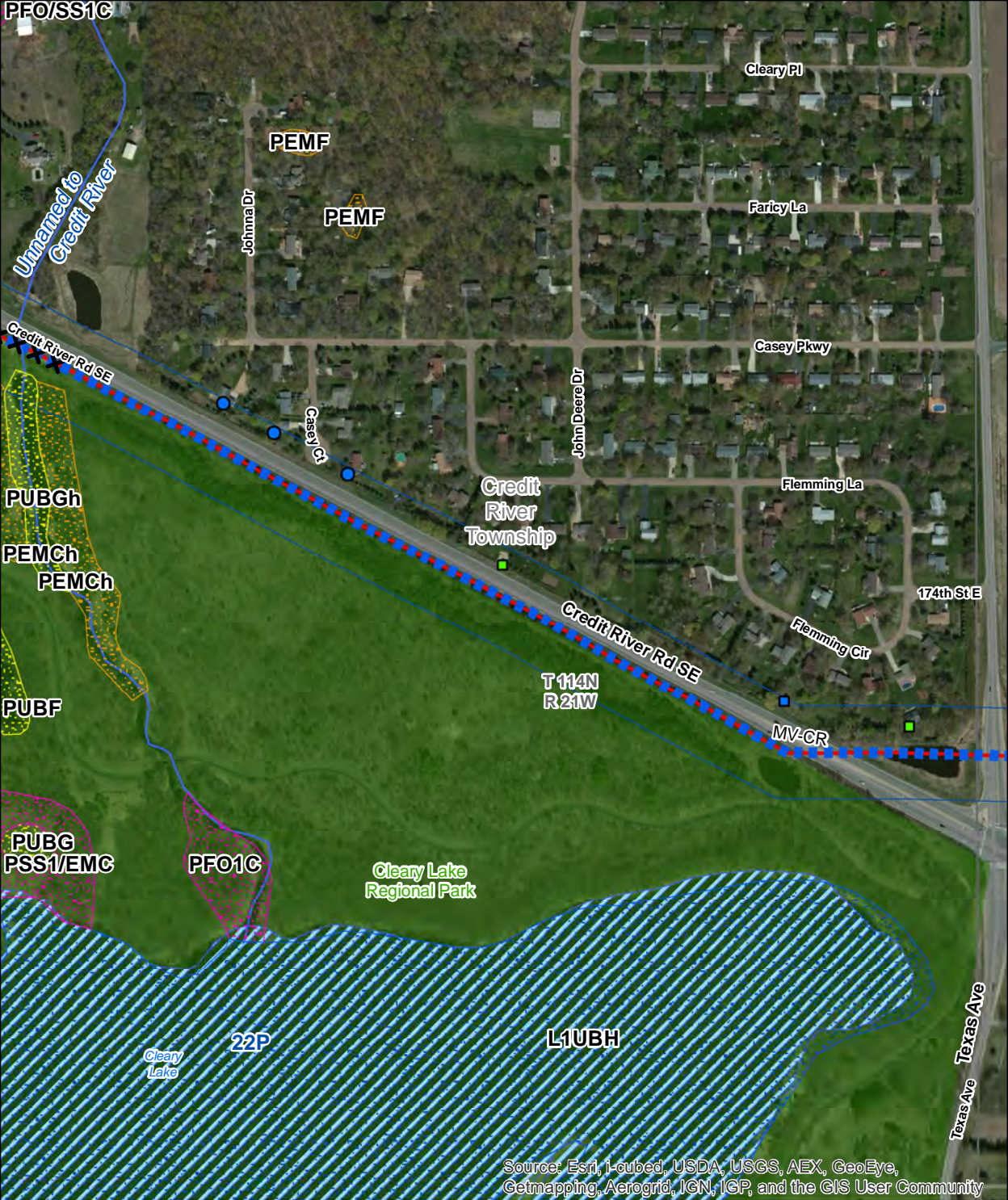
Source: Esri, i-cubed, USDA, USGS, AEX, GeoEye, Getmapping, Aerogrid, IGN, IGP, and the GIS User Community

- | | |
|--|-------------------------------------|
| Proposed Great River Energy
115 kV Transmission Line | NWI Wetlands |
| ■ MV-CR Segment | ■ Freshwater Emergent Wetland |
| ■ Existing Cooperative | ■ Freshwater Forested/Shrub Wetland |
| ■ Distribution Substation | ■ Freshwater Pond |
| ■ Existing Great River Energy
69 kV Transmission Line | ■ Park |
| ■ 300' route width | |

**Elko New Market and
Cleary Lake Areas Project
Credit River Junction to
Credit River Substation
Map Series 2 of 4**

GIS Data sources include:
MNGEO, MNDNR, MNDOT,
and Great River Energy.
Aerial Imagery from ESRI web service





Source: Esri, i-cubed, USDA, USGS, AEX, GeoEye, Getmapping, Aerogrid, IGN, IGP, and the GIS User Community

- Proposed Great River Energy 115 kV Transmission Line
- MV-CR Segment
- Existing Great River Energy 69 kV Transmission Line
- 300' route width
- ✕✕ Potential Bird Diverter Locations

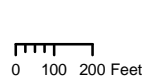
- Residence within 150' (3)
- Non-Residential Building within 150' (1)
- within 100' (2)

- NWI Wetlands
- Freshwater Emergent Wetland
- Freshwater Forested/Shrub Wetland
- Freshwater Pond
- Lake
- Park
- Public Watercourse
- Public Water Basin

Elko New Market and Cleary Lake Areas Project

Credit River Junction to Credit River Substation

Map Series 3 of 4



GIS Data sources include: MNGEO, MNDNR, MNDOT, and Great River Energy. Aerial Imagery from ESRI web service



Proposed Great River Energy 115 kV Transmission Line
 ■ MV-CR Segment
 Existing Great River Energy 69 kV Transmission Line
 Existing Xcel Energy 69 kV Transmission Line
 ● Distribution Substation
 300' route width
 ✕✕ Potential Bird Diverter Locations

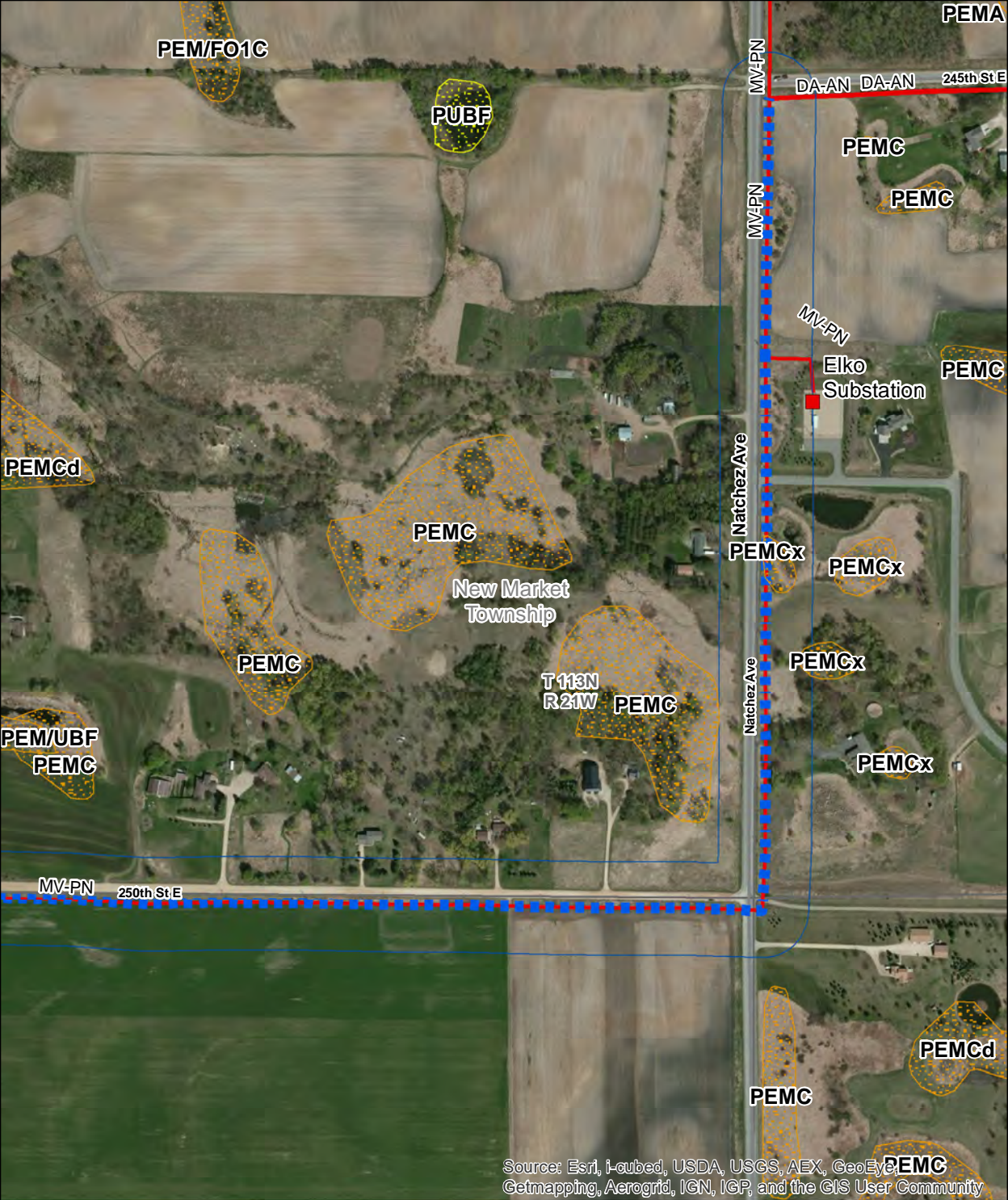
Business
 ★ within 100' (1)

NWI Wetlands
 Freshwater Emergent Wetland
 Freshwater Forested/Shrub Wetland
 Freshwater Pond
 Lake
 Park
 Public Watercourse
 Public Water Wetland
 Public Water Basin

Elko New Market and Cleary Lake Areas Project Credit River Junction to Credit River Substation Map Series 4 of 4

GIS Data sources include: MNGEO, MNDNR, MNDOT, and Great River Energy. Aerial Imagery from ESRI web service

0 100 200 Feet



Source: Esri, i-cubed, USDA, USGS, AEX, GeoEye, Getmapping, Aerogrid, IGN, IGP, and the GIS User Community

- | | |
|---|-------------------------------|
| Proposed Great River Energy
115 kV Transmission Line | NWI Wetlands |
| ■ MV-PN South Segment | ■ Freshwater Emergent Wetland |
| Existing Cooperative | ■ Freshwater Pond |
| ■ Distribution Substation | |
| Existing Great River Energy | |
| — 69 kV Transmission Line | |
| □ 300' route width | |

Elko New Market and Cleary Lake Areas Project
245th Street to New Market Substation
Map Series 1 of 9

GIS Data sources include:
 MNGEO, MNDNR, MNDOT,
 and Great River Energy.
 Aerial Imagery from ESRI web service

0 100 200 Feet



Source: Esri, i-cubed, USDA, USGS, AEX, GeoEye, Getmapping, Aerogrid, IGN, IGP, and the GIS User Community

- | | | |
|---|----------------------------|-------------------------------|
| Proposed Great River Energy
115 kV Transmission Line | Residence | NWI Wetlands |
| ■ MV-PN South Segment | ● within 150' (2) | ■ Freshwater Emergent Wetland |
| Existing Great River Energy
69 kV Transmission Line | ● within 50' (1) | |
| □ 300' route width | ■ Non-Residential Building | |
| | ■ within 150' (1) | |
| | ■ within 100' (1) | |

**Elko New Market and
Cleary Lake Areas Project
245th Street to
New Market Substation
Map Series 2 of 9**

GIS Data sources include:
MNGEO, MNDNR, MNDOT,
and Great River Energy.
Aerial Imagery from ESRI web service

0 100 200 Feet

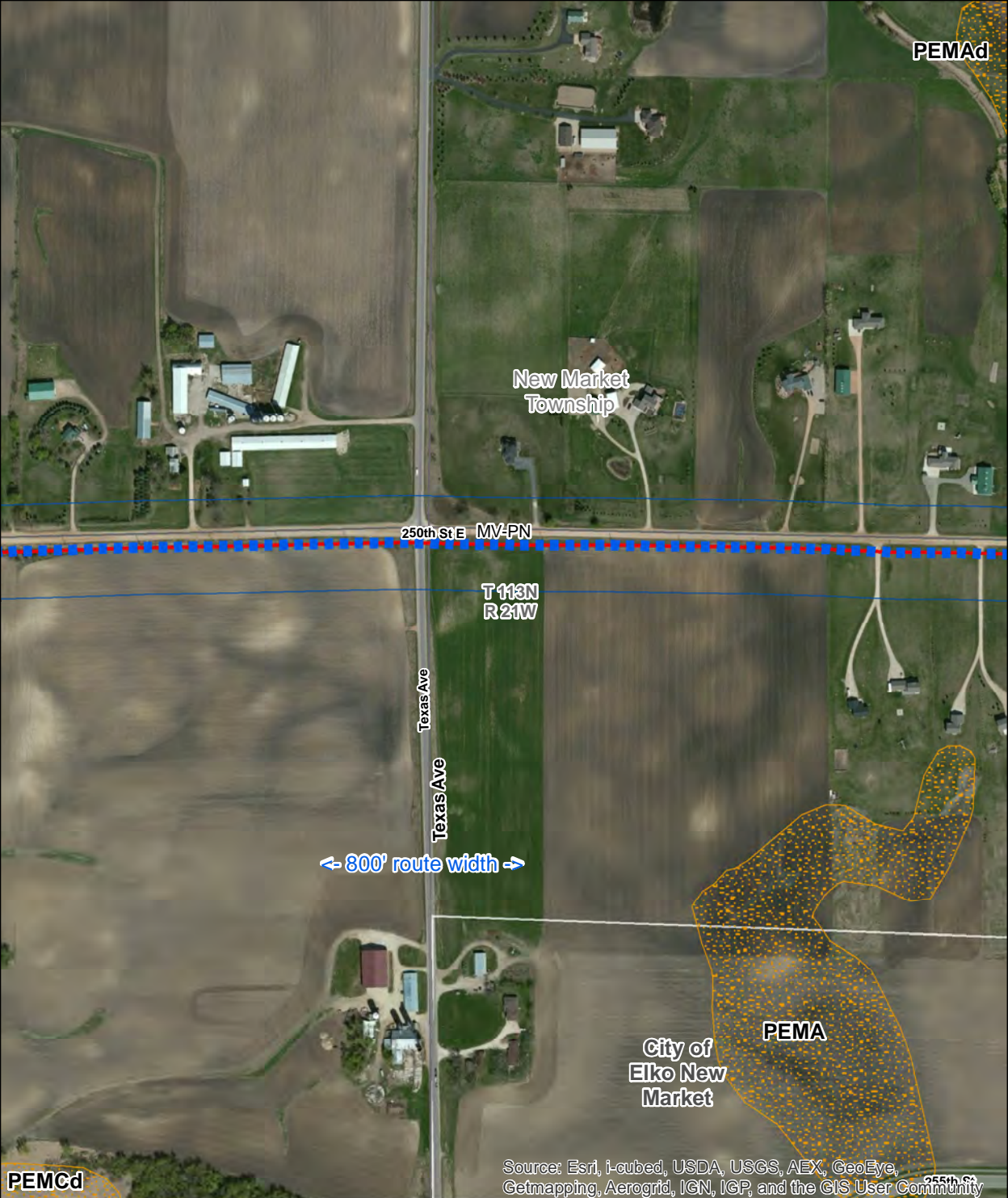


Source: Esri, i-cubed, USDA, USGS, AEX, GeoEye, Getmapping, Aerogrid, IGN, IGP, and the GIS User Community

- Proposed Great River Energy 115 kV Transmission Line
- MV-PN South Segment
- Existing Great River Energy 69 kV Transmission Line
- 300' route width
- Residence within 150' (1)
- Non-Residential Building within 150' (3)

- NWI Wetlands
- Freshwater Emergent Wetland

Elko New Market and Cleary Lake Areas Project
245th Street to New Market Substation
Map Series 3 of 9



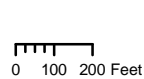
PEMCd

- Proposed Great River Energy 115 kV Transmission Line
- MV-PN South Segment
- Existing Great River Energy 69 kV Transmission Line
- 300' route width

- NWI Wetlands
- Freshwater Emergent Wetland

Source: Esri, i-cubed, USDA, USGS, AEX, GeoEye, Getmapping, Aerogrid, IGN, IGP, and the GIS User Community

**Elko New Market and Cleary Lake Areas Project
245th Street to
New Market Substation
Map Series 4 of 9**



GIS Data sources include: MNGEO, MNDNR, MNDOT, and Great River Energy. Aerial Imagery from ESRI web service



Source: Esri, i-cubed, USDA, USGS, AEX, GeoEye, Getmapping, Aerogrid, IGN, IGP, and the GIS User Community

- Proposed Great River Energy 115 kV Transmission Line
- MV-PN South Segment
- Existing Great River Energy 69 kV Transmission Line
- 300' route width
- NWI Wetlands
- Freshwater Emergent Wetland
- Freshwater Pond
- Public Watercourse

Elko New Market and Cleary Lake Areas Project
245th Street to New Market Substation
Map Series 5 of 9

GIS Data sources include: MNGEO, MNDNR, MNDOT, and Great River Energy. Aerial Imagery from ESRI web service

0 100 200 Feet

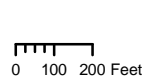


Source: Esri, i-cubed, USDA, USGS, AEX, GeoEye, Getmapping, Aerogrid, IGN, IGP, and the GIS User Community

- Proposed Great River Energy 115 kV Transmission Line
- MV-PN South Segment
- Existing Great River Energy 69 kV Transmission Line
- 300' route width
- 500' route width portion
- Potential Bird Diverter Locations




- NWI Wetlands
- Freshwater Emergent Wetland
- Freshwater Forested/Shrub Wetland
- Freshwater Pond
- Public Watercourse
- Public Water Wetland


Elko New Market and Cleary Lake Areas Project
245th Street to New Market Substation
Map Series 6 of 9








GIS Data sources include: MNGEO, MNDNR, MNDOT, and Great River Energy. Aerial Imagery from ESRI web service



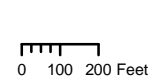
Proposed Great River Energy
115 kV Transmission Line
 MV-PN South Segment
 Existing Great River Energy
 69 kV Transmission Line
 300' route width

Residence
 within 150' (2)

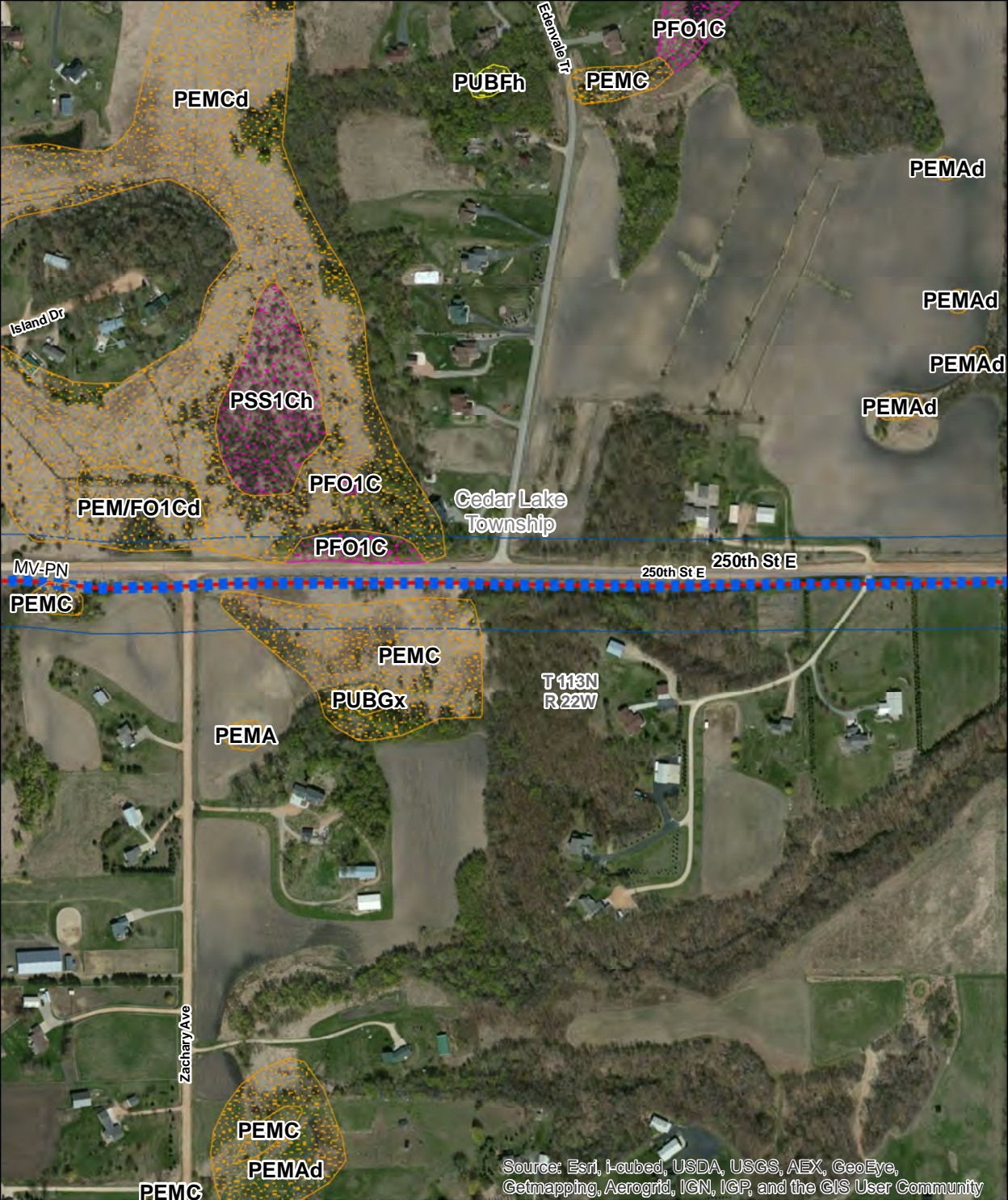
NWI Wetlands
 Freshwater Emergent Wetland
 Freshwater Forested/Shrub Wetland
 Freshwater Pond
 Lake
 Public Water Basin

**Elko New Market and
Cleary Lake Areas Project
245th Street to
New Market Substation
Map Series 7 of 9**

Source: Esri, i-cubed, USDA, USGS, AEX, GeoEye,
Getmapping, Aerogrid, IGN, IGP, and the GIS User Community



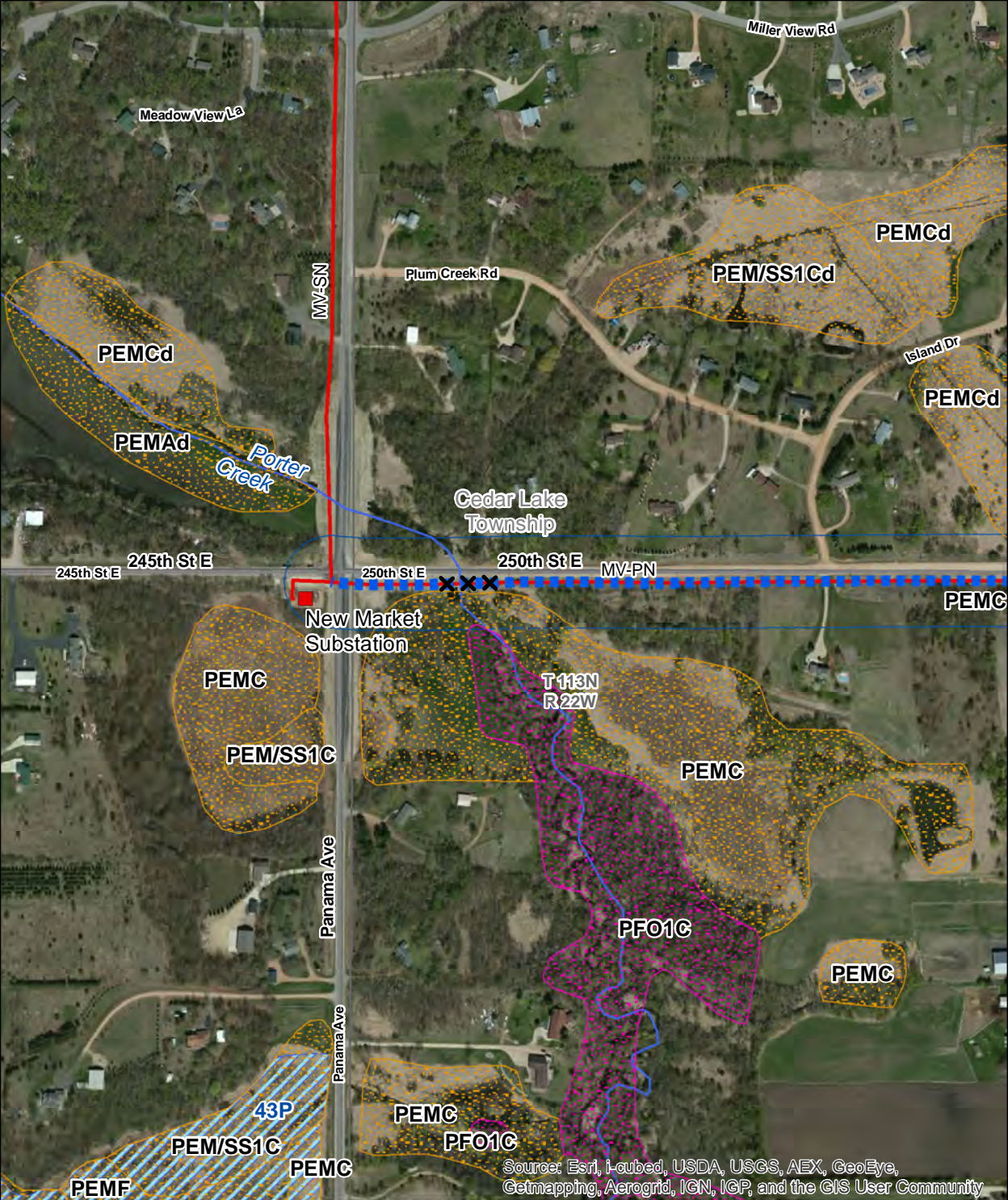
GIS Data sources include:
MNGEO, MNDNR, MNDOT,
and Great River Energy.
Aerial Imagery from ESRI web service



Source: Esri, i-cubed, USDA, USGS, AEX, GeoEye, Getmapping, Aerogrid, IGN, IGP, and the GIS User Community

- Proposed Great River Energy 115 kV Transmission Line
- MV-PN South Segment
- Existing Great River Energy 69 kV Transmission Line
- 300' route width
- NWI Wetlands
- Freshwater Emergent Wetland
- Freshwater Forested/Shrub Wetland
- Freshwater Pond

Elko New Market and Cleary Lake Areas Project
245th Street to New Market Substation
Map Series 8 of 9



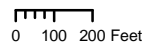
Source: Esri, i-cubed, USDA, USGS, AEX, GeoEye, Getmapping, Aerogrid, IGN, IGP, and the GIS User Community

- Proposed Great River Energy 115 kV Transmission Line
- MV-PN South Segment
- Existing Cooperative
- Distribution Substation
- Existing Great River Energy 69 kV Transmission Line
- 300' route width
- XX Potential Bird Diverter Locations

- NWI Wetlands
- Freshwater Emergent Wetland
- Freshwater Forested/Shrub Wetland
- Public Watercourse
- Public Water Basin

Elko New Market and Cleary Lake Areas Project
245th Street to New Market Substation
Map Series 9 of 9

GIS Data sources include: MNGEO, MNDNR, MNDOT, and Great River Energy. Aerial Imagery from ESRI web service





Source: Esri, Leica, USDA, USGS, AEX, GeoEye, Getmapping, Aerogrid, IGN, IGP, and the GIS User Community

- Proposed Great River Energy 115 kV Transmission Line
- East Segment
- Existing Great River Energy 69 kV Transmission Line
- 300' route width
- 800' route width portion
- Residence within 300' (3)
- Non-Residential Building within 200' (2)
- within 150' (1)
- within 100' (1)
- within 50' (2)
- NWI Wetlands Freshwater Emergent Wetland

Elko New Market and Cleary Lake Areas Project
250th Street to Veseli Breaker Station (East Option)
Map Series 1 of 11



- Proposed Great River Energy 115 kV Transmission Line
- East Segment
- 300' route width
- NWI Wetlands
- Freshwater Emergent Wetland

Elko New Market and Cleary Lake Areas Project
250th Street to Veseli Breaker Station (East Option)
Map Series 2 of 11



Source: Esri, i-cubed, USDA, USGS, AEX, GeoEye, Getmapping, Aerogrid, IGN, IGP, and the GIS User Community

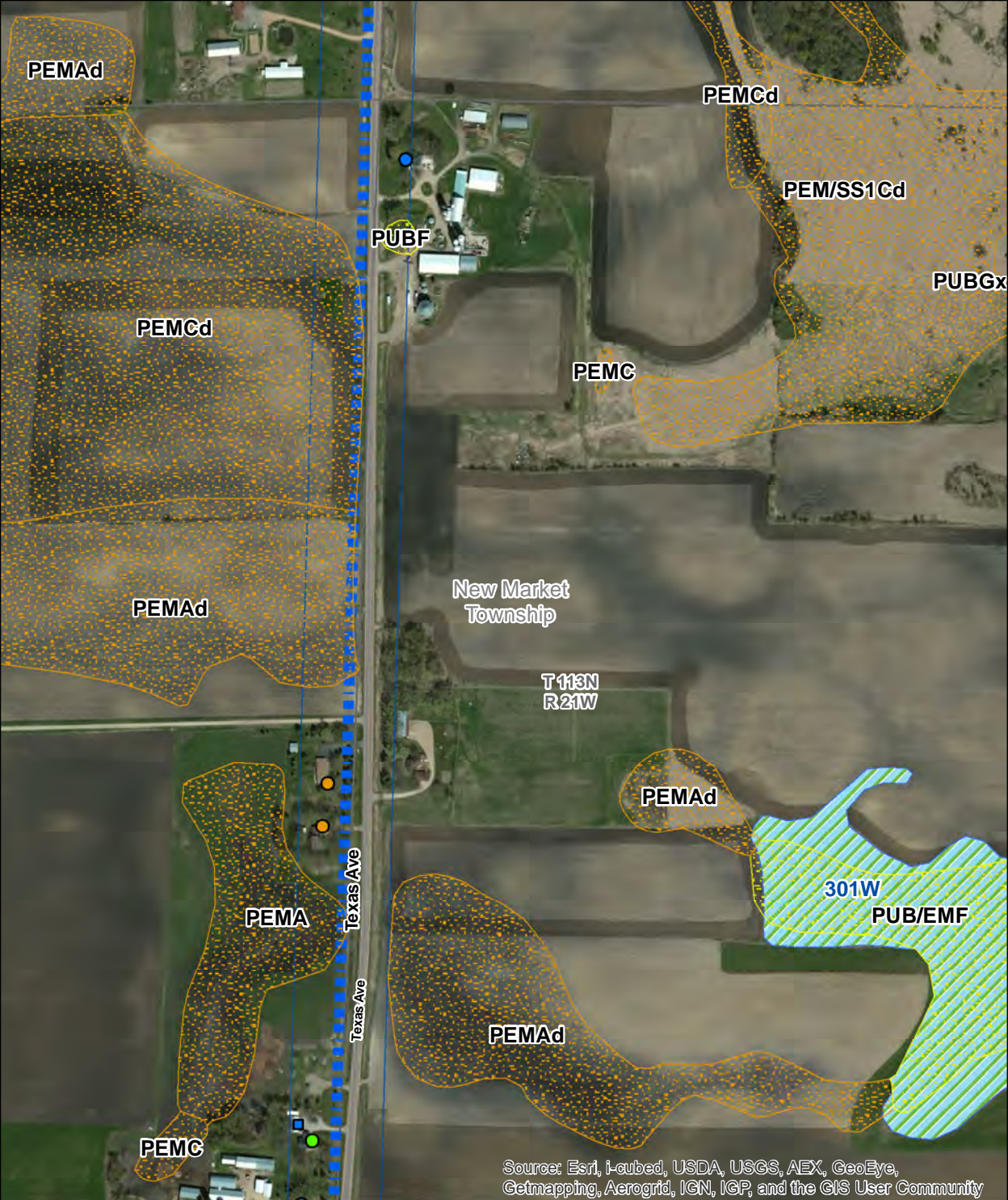
Proposed Great River Energy
115 kV Transmission Line
■ East Segment
□ 300' route width

Residence
● within 150' (1)

NWI Wetlands
■ Freshwater Emergent Wetland
— Public Watercourse

**Elko New Market and
Cleary Lake Areas Project
250th Street to
Veseli Breaker Station (East Option)
Map Series 3 of 11**

0 100 200 Feet
N
GIS Data sources include:
MNGEO, MNDNR, MNDOT,
and Great River Energy.
Aerial Imagery from ESRI web service



Source: Esri, i-cubed, USDA, USGS, AEX, GeoEye, Getmapping, Aerogrid, IGN, IGP, and the GIS User Community

- Proposed Great River Energy 115 kV Transmission Line**
- East Segment
 - 300' route width
- Residence**
- within 150' (2)
 - within 100' (1)
 - within 75' (2)
- Non-Residential Building**
- within 150' (1)

- NWI Wetlands**
- Freshwater Emergent Wetland
 - Freshwater Pond
 - Public Water Wetland

Elko New Market and Cleary Lake Areas Project
250th Street to Veseli Breaker Station (East Option)
Map Series 4 of 11

GIS Data sources include: MNGEO, MNDNR, MNDOT, and Great River Energy. Aerial Imagery from ESRI web service

0 100 200 Feet



Source: Esri, i-cubed, USDA, USGS, AEX, GeoEye, Getmapping, Aerogrid, IGN, IGP, and the GIS User Community

- Proposed Great River Energy 115 kV Transmission Line
- East Segment
- 300' route width
- Residence within 150' (1)
- Non-Residential Building within 100' (1)

- NWI Wetlands
- Freshwater Emergent Wetland
- Public Watercourse




Elko New Market and Cleary Lake Areas Project
250th Street to Veseli Breaker Station (East Option)
Map Series 5 of 11



GIS Data sources include:
 MNGEO, MNDNR, MNDOT,
 and Great River Energy.
 Aerial Imagery from ESRI web service

0 100 200 Feet



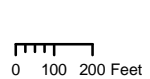
Source: Esri, i-cubed, USDA, USGS, AEX, GeoEye, Getmapping, Aerogrid, IGN, IGP, and the GIS User Community

Proposed Great River Energy
115 kV Transmission Line
 East Segment
 300' route width
 Potential Bird Diverter Locations

Residence
 within 150' (1)
 Non-Residential Building
 within 150' (2)

NWI Wetlands
 Freshwater Emergent Wetland
 Public Watercourse

**Elko New Market and
Cleary Lake Areas Project
250th Street to
Veseli Breaker Station (East Option)
Map Series 6 of 11**



GIS Data sources include:
MNGEO, MNDNR, MNDOT,
and Great River Energy.
Aerial Imagery from ESRI web service



Cedar Lake
Township
T113N
R22W

PEM/F01A

PEMC

280th St E

280th St E

PEM/F01Cd

T112N
R22W
Wheatland
Township

PEMAd

T112N
R21W

Webster
Township

Glencoe Tr

PEMCd

PEMCd


PEMfd

Source: Esri, i-cubed, USDA, USGS, AEX, GeoEye, Getmapping, Aerogrid, IGN, IGP, and the GIS User Community

Proposed Great River Energy
115 kV Transmission Line
 East Segment
 300' route width

NWI Wetlands
 Freshwater Emergent Wetland

**Elko New Market and
Cleary Lake Areas Project
250th Street to
Veseli Breaker Station (East Option)
Map Series 7 of 11**

0 100 200 Feet  GIS Data sources include:
MNGEO, MNDNR, MNDOT,
and Great River Energy.
Aerial Imagery from ESRI web service



Source: Esri, i-cubed, USDA, USGS, AEX, GeoEye, Getmapping, Aerogrid, IGN, IGP, and the GIS User Community

- | | | |
|---|---|-------------------------------|
| Proposed Great River Energy
115 kV Transmission Line | Non-Residential Building
within 150' (3) | NWI Wetlands |
| ■ East Segment | ■ within 150' (3) | ■ Freshwater Emergent Wetland |
| □ 300' route width | | ■ Freshwater Pond |

**Elko New Market and
Cleary Lake Areas Project
250th Street to
Veseli Breaker Station (East Option)
Map Series 8 of 11**



Source: Esri, i-cubed, USDA, USGS, AEX, GeoEye, Getmapping, Aerogrid, IGN, IGP, and the GIS User Community

- | | | |
|--|--|-------------------|
| Proposed Great River Energy 115 kV Transmission Line | Non-Residential Building within 150' (3) | NWI Wetlands |
| ■ East Segment | ■ Freshwater Emergent Wetland | ■ Freshwater Pond |
| □ 300' route width | | |

Elko New Market and Cleary Lake Areas Project
250th Street to Veseli Breaker Station (East Option)
Map Series 9 of 11



Source: Esri, i-cubed, USDA, USGS, AEX, GeoEye, Getmapping, Aerogrid, IGN, IGP, and the GIS User Community

- Proposed Great River Energy 115 kV Transmission Line
- East Segment
- 300' route width
- NWI Wetlands
- Freshwater Emergent Wetland

Elko New Market and Cleary Lake Areas Project
250th Street to Veseli Breaker Station (East Option)
Map Series 10 of 11



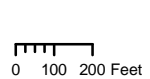
Source: Esri, i-cubed, USDA, USGS, AEX, GeoEye, Getmapping, Aerogrid, IGN, IGP, and the GIS User Community

- Proposed Great River Energy
115 kV Transmission Line
- East Segment
- Existing Great River Energy
69 kV Transmission Line
- Proposed Xcel Energy
69 kV Breaker Station
- Existing Xcel Energy
69 kV Transmission Line
- 300' route width

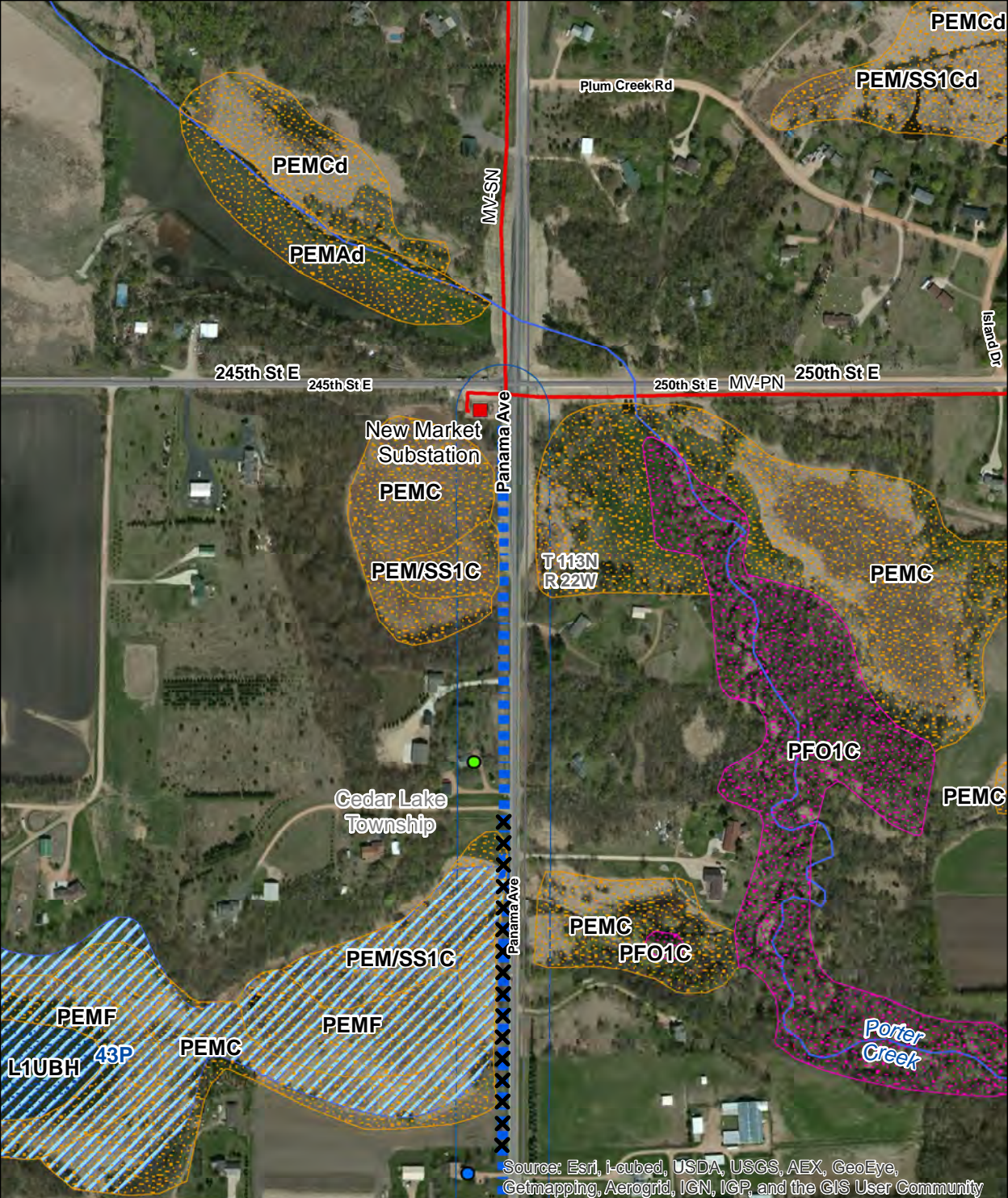
- Non-Residential Building
within 150' (1)

- NWI Wetlands
- Freshwater Emergent Wetland
- Freshwater Forested/Shrub Wetland

**Elko New Market and
Cleary Lake Areas Project
250th Street to
Veseli Breaker Station (East Option)
Map Series 11 of 11**



GIS Data sources include:
MNGEO, MNDNR, MNDOT,
and Great River Energy.
Aerial Imagery from ESRI web service



Source: Esri, i-cubed, USDA, USGS, AEX, GeoEye, Getmapping, Aerogrid, IGN, IGP, and the GIS User Community

- Proposed Great River Energy 115 kV Transmission Line
- West Segment
- Existing Cooperative
- Distribution Substation
- Existing Great River Energy 69 kV Transmission Line
- 300' route width
- Potential Bird Diverter Locations

- Residence
 - within 150' (1)
 - within 100' (1)
- NWI Wetlands
 - Freshwater Emergent Wetland
 - Freshwater Forested/Shrub Wetland
 - Lake
 - Public Watercourse
 - Public Water Basin

Elko New Market and Cleary Lake Areas Project
New Market Substation to Veseli Breaker Station (West Option)
Map Series 1 of 9

GIS Data sources include: MNGEO, MNDNR, MNDOT, and Great River Energy. Aerial Imagery from ESRI web service

0 100 200 Feet



Source: Esri, i-cubed, USDA, USGS, AEX, GeoEye, Getmapping, Aerogrid, IGN, IGP, and the GIS User Community

- Proposed Great River Energy 115 kV Transmission Line
- West Segment
- 300' route width
- 500' route width portion
- Residence within 150' (1)

- NWI Wetlands
- Freshwater Emergent Wetland
- Freshwater Pond
- Public Watercourse
- Public Water Wetland
- Public Water Basin

Elko New Market and Cleary Lake Areas Project
New Market Substation to Veseli Breaker Station (West Option)
Map Series 2 of 9

GIS Data sources include: MNGEO, MNDNR, MNDOT, and Great River Energy. Aerial Imagery from ESRI web service

0 100 200 Feet



Source: Esri, i-cubed, USDA, USGS, AEX, GeoEye, Getmapping, Aerogrid, IGN, IGP, and the GIS User Community

- Proposed Great River Energy 115 kV Transmission Line
- West Segment
- 300' route width
- Potential Bird Diverter Locations

- NWI Wetlands
- Freshwater Emergent Wetland
- Freshwater Forested/Shrub Wetland
- Freshwater Pond
- Public Watercourse
- Public Water Wetland

Elko New Market and Cleary Lake Areas Project
New Market Substation to Veseli Breaker Station (West Option)
Map Series 3 of 9

GIS Data sources include: MNGEO, MNDNR, MNDOT, and Great River Energy.
 Aerial Imagery from ESRI web service



Source: Esri, i-cubed, USDA, USGS, AEX, GeoEye, Getmapping, Aerogrid, IGN, IGP, and the GIS User Community

- Proposed Great River Energy 115 kV Transmission Line
- West Segment
- 300' route width
- Potential Bird Diverter Locations

- NWI Wetlands
- Freshwater Emergent Wetland
- Waterfowl Production Area

Elko New Market and Cleary Lake Areas Project
New Market Substation to Veseli Breaker Station (West Option)
Map Series 4 of 9

GIS Data sources include:
MNGEO, MNDNR, MNDOT,
and Great River Energy.
Aerial Imagery from ESRI web service

0 100 200 Feet



Source: Esri, i-cubed, USDA, USGS, AEX, GeoEye, Getmapping, Aerogrid, IGN, IGP, and the GIS User Community

- Proposed Great River Energy 115 kV Transmission Line
- West Segment
- 300' route width
- Potential Bird Diverter Locations

- NWI Wetlands
- Freshwater Emergent Wetland
- Freshwater Pond
- Waterfowl Production Area

Elko New Market and Cleary Lake Areas Project
New Market Substation to Veseli Breaker Station (West Option)
Map Series 5 of 9

GIS Data sources include: MNGEO, MNDNR, MNDOT, and Great River Energy. Aerial Imagery from ESRI web service

0 100 200 Feet



Source: Esri, i-cubed, USDA, USGS, AEX, GeoEye, Getmapping, Aerogrid, IGN, IGP, and the GIS User Community

- | | |
|---|-------------------------------|
| Proposed Great River Energy
115 kV Transmission Line | NWI Wetlands |
| ■ West Segment | ■ Freshwater Emergent Wetland |
| □ 300' route width | ■ Public Water Wetland |

Elko New Market and Cleary Lake Areas Project
New Market Substation to Veseli Breaker Station (West Option)
Map Series 6 of 9



- | | |
|--|-----------------------------|
| Proposed Great River Energy 115 kV Transmission Line | NWI Wetlands |
| West Segment | Freshwater Emergent Wetland |
| 300' route width | Freshwater Pond |

Elko New Market and Cleary Lake Areas Project
New Market Substation to Veseli Breaker Station (West Option)
Map Series 7 of 9



Source: Esri, i-cubed, USDA, USGS, AEX, GeoEye, Getmapping, Aerogrid, IGN, IGP, and the GIS User Community

- | | | |
|---|-----------------|-----------------------------|
| Proposed Great River Energy
115 kV Transmission Line | Residence | NWI Wetlands |
| West Segment | within 150' (1) | Freshwater Emergent Wetland |
| 300' route width | within 75' (1) | |

**Elko New Market and
Cleary Lake Areas Project
New Market Substation to
Veseli Breaker Station (West Option)
Map Series 8 of 9**



Source: Esri, i-cubed, USDA, USGS, AEX, GeoEye, Getmapping, Aerogrid, IGN, IGP, and the GIS User Community

Proposed Great River Energy
115 kV Transmission Line
■ ■ West Segment
Existing Great River Energy
— 69 kV Transmission Line
Proposed Xcel Energy
■ 69 kV Breaker Station
Existing Xcel Energy
— 69 kV Transmission Line
□ 300' route width

Non-Residential Building
■ within 150' (1)

NWI Wetlands
■ Freshwater Emergent Wetland
■ Freshwater Forested/Shrub Wetland

Elko New Market and Cleary Lake Areas Project
New Market Substation to Veseli Breaker Station (West Option)
Map Series 9 of 9

GIS Data sources include: MNGEO, MNDNR, MNDOT, and Great River Energy. Aerial Imagery from ESRI web service

0 100 200 Feet