

## **FIGURES**

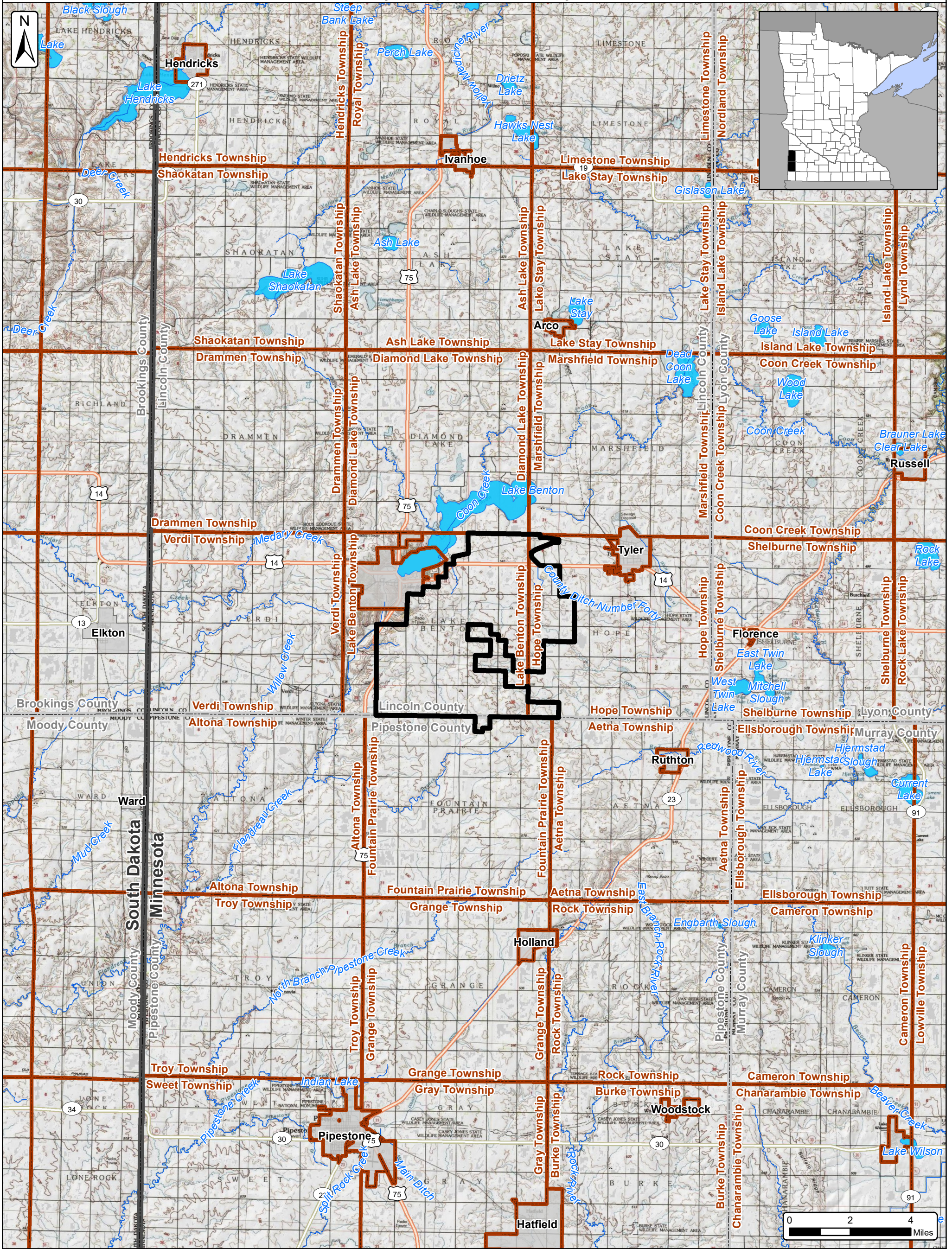
This page is intentionally left blank.



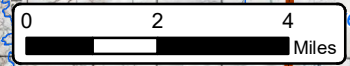
# Buffalo Ridge Wind

## Figure 1- Project Location Map

### Lincoln County & Pipestone County, Minnesota



- Main Watercourses (NHD)
- Main Waterbodies (NHD)
- Project Area  
5/9/2019 (±17,609 Ac.)
- Cities
- Townships
- Counties
- States



SOURCE: USGS TOPOGRAPHIC QUADRANGLES 1:24,000



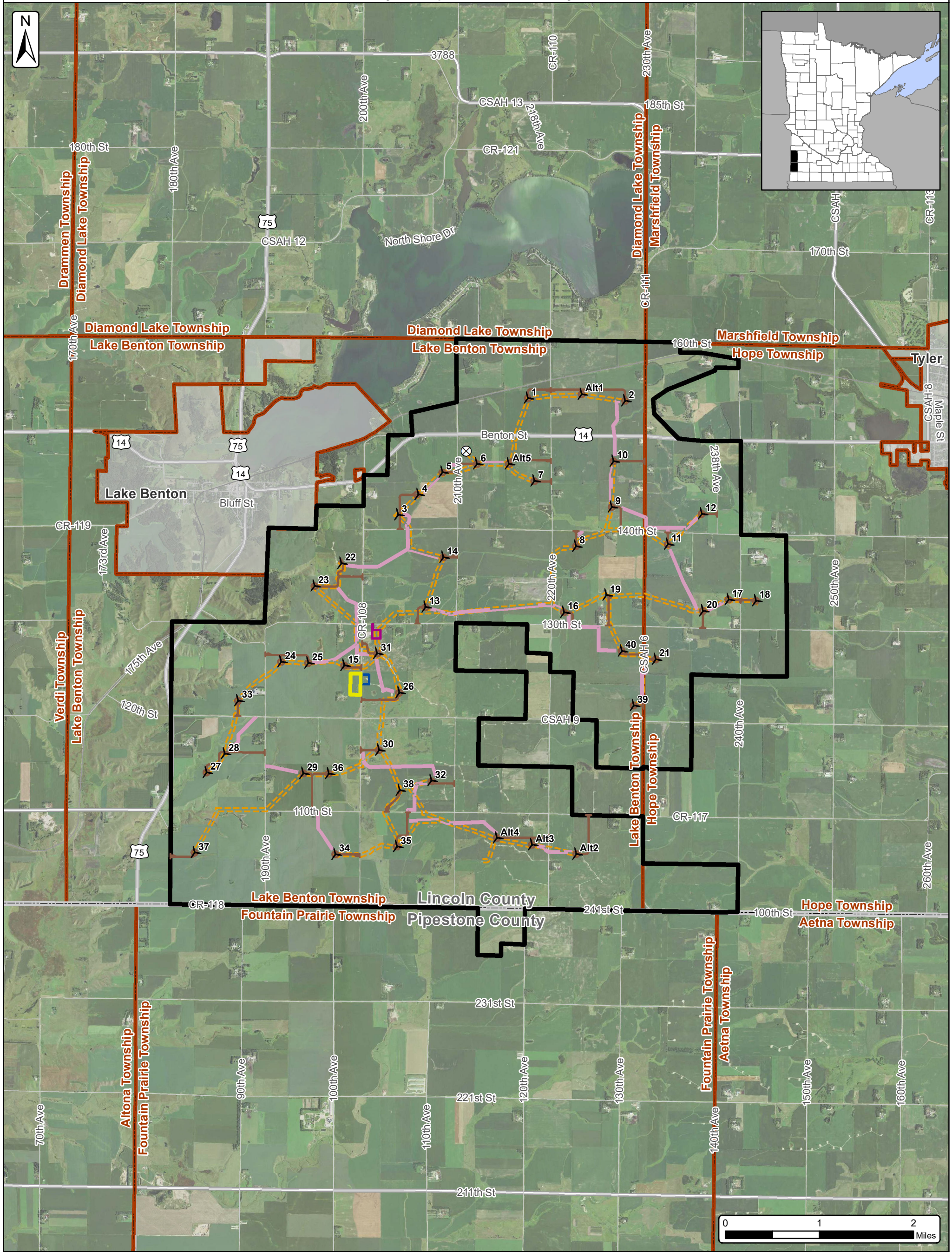
This page is intentionally left blank.



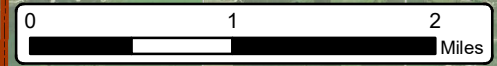
# Buffalo Ridge Wind

## Figure 2 - Project Area and Facilities Map

Lincoln County & Pipestone County, Minnesota



- Turbine Layout (5/22/2020)
- MET Tower
- Access Road (5/22/2020)
- Preliminary Crane Paths
- Collection Corridor (5/20/2020)
- O&M Area (05/16/2019)
- Proposed Substation (03/29/2019)
- Potential Laydown/ Batch Plant (07/25/2019)
- Project Area  
5/9/2019 (±17,609 Ac.)
- Cities
- Townships
- Counties



SOURCE: USDA NAIP 2017 IMAGERY



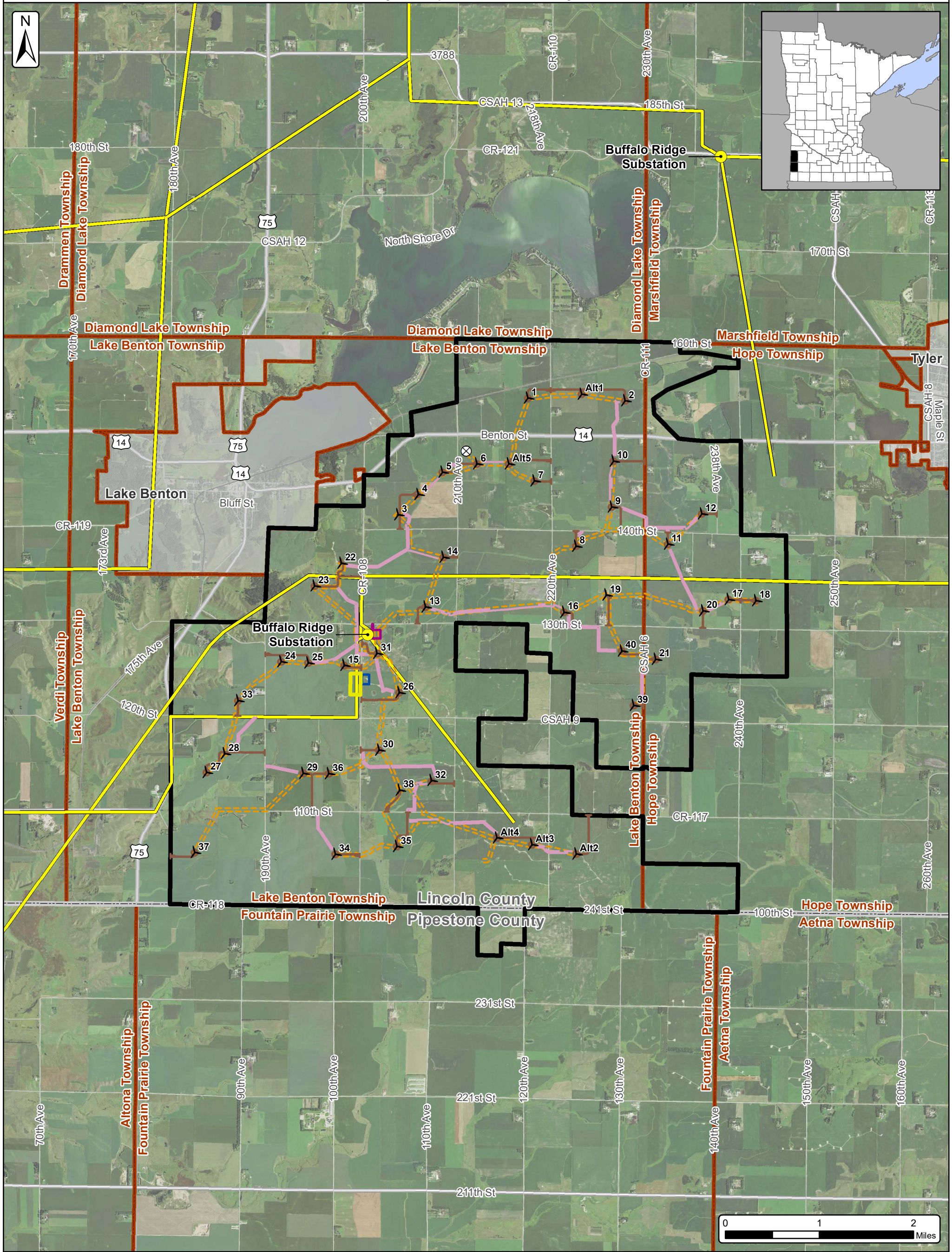
This page is intentionally left blank.



# Buffalo Ridge Wind

## Figure 3 - Project Area and Associated Facilities Map

Lincoln County & Pipestone County, Minnesota



- Turbine Layout (5/22/2020)
- MET Tower
- Access Road (5/22/2020)
- Preliminary Crane Paths
- Collection Corridor (5/20/2020)
- O&M Area (05/16/2019)
- Proposed Substation (03/29/2019)
- Potential Laydown/Batch Plant (07/25/2019)
- Point of Interconnect
- Transmission Lines (Velocity Suite)
- Project Area 5/9/2019 (±17,609 Ac.)
- Cities
- Townships
- Counties

SOURCE: USDA NAIP 2017 IMAGERY





This page is intentionally left blank.