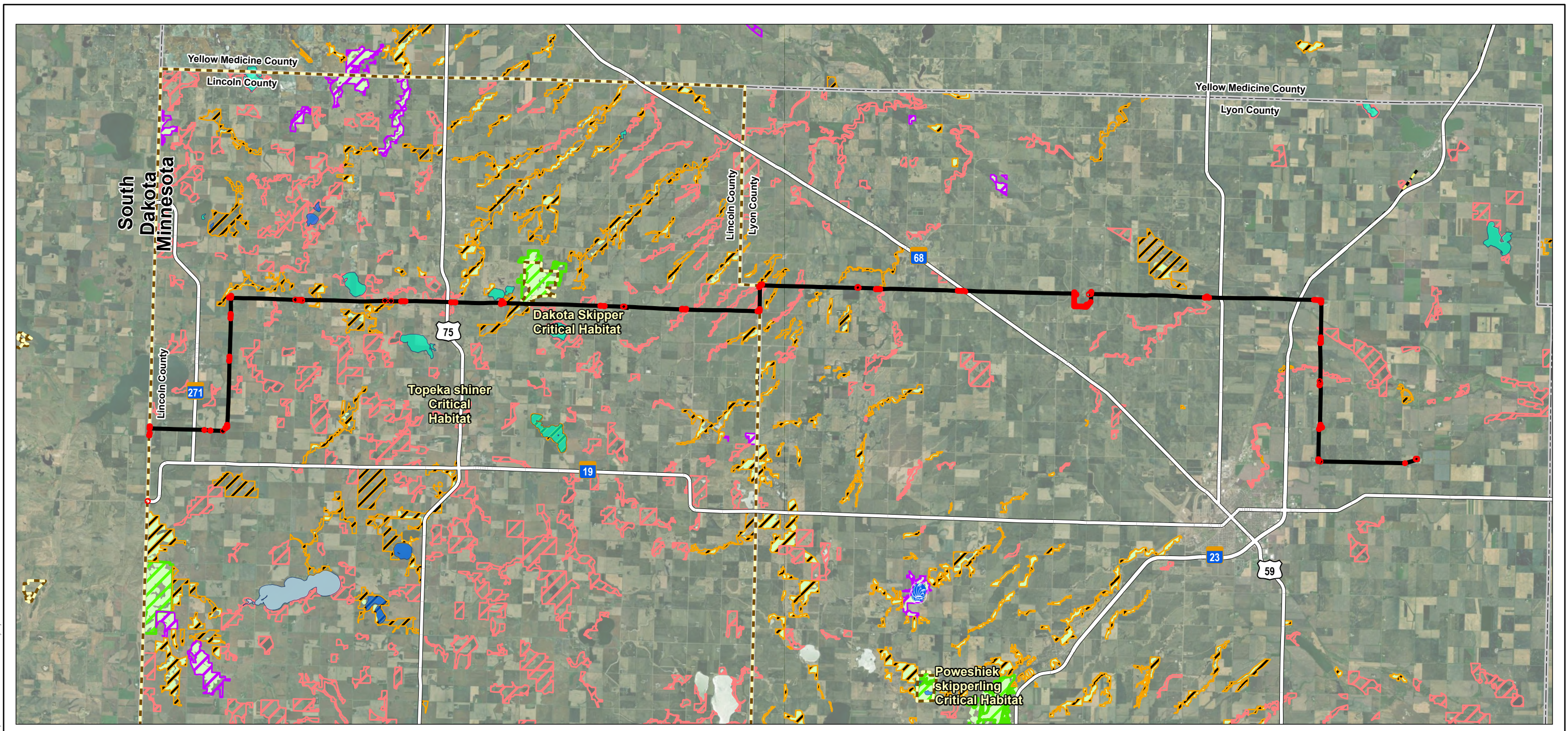


MPUC Docket No. ET-2/TL-08-1474

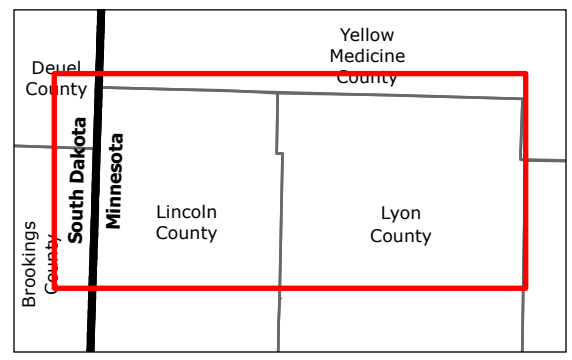
Application: Minor Alteration of CapX2020 Brookings-Hampton Route Permit
Figures

Figures - Part 3

Includes Figures 10, 11

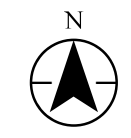
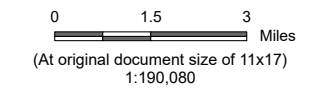


V:\2277\active\227705875\03_data\gis\proj\minor_alteration\minor_alteration.aprx Revised: 2023-11-02 By: kjmueller



- Legend**
- Project Study Area
 - Temporary Workspace
 - Major Highway
 - Calcareous Fen
 - MBS Railroad Rights-of-Way Prairies**
 - Fair
 - County Boundary
 - USFWS Critical Habitat
 - DNR Native Plant Communities (single symbol)

- Lakes of Biological Significance**
- High
 - Moderate
 - Outstanding
- Sites of Biodiversity Significance**
- Outstanding
 - High
 - Moderate
 - Below

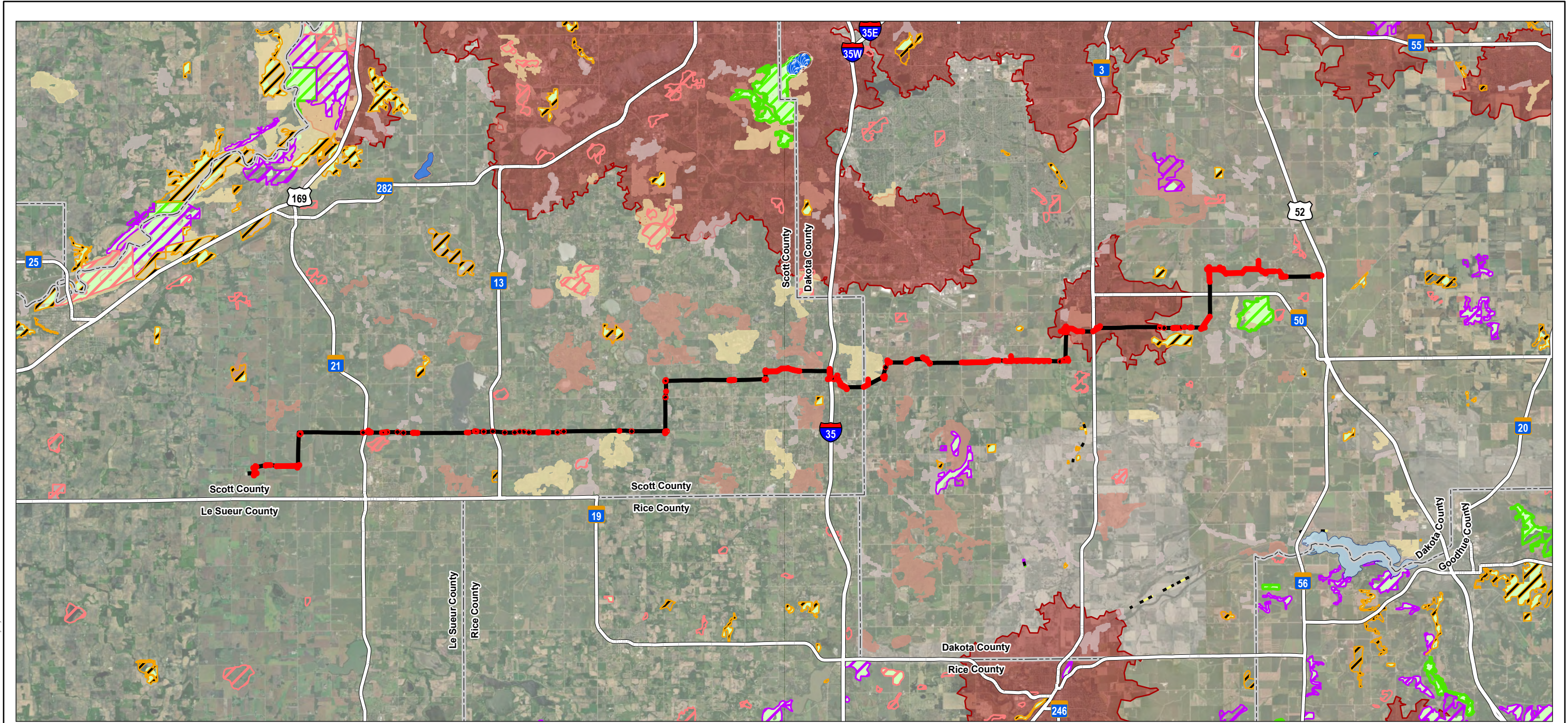


Project Location
Lincoln Co., MN to Lyon Co., MN
Scott Co. to Dakota Co., MN

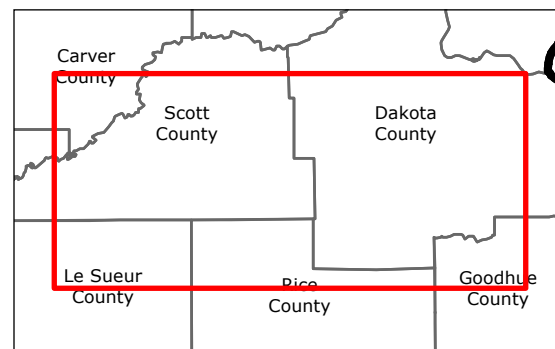
Client/Project
Xcel Energy
Brookings Co. to Lyon Co. & Helena to Hampton
Minor Alteration

Figure No.
10a

Title
**Unique and Natural Features - Brookings
Co. to Lyon Co.**

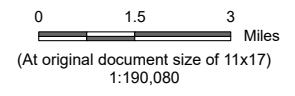


V:\2277\active\227705875\03_data\gis\cd\gis\proj\minor_alteration\minor_alteration.aprx Revised: 2023-11-02 By: kjmueller



- Legend**
- Project Study Area
 - Temporary Workspace
 - Major Highway
 - Calcareous Fen
 - MBS Railroad Rights-of-Way Prairies**
 - Very Good
 - Fair
 - County Boundary
 - DNR Native Plant Communities (single symbol)
 - Lakes of Biological Significance**
 - High
 - Moderate
 - Outstanding

- Sites of Biodiversity Significance**
- Outstanding
 - High
 - Moderate
 - Below
- Central Region Regionally Significant Ecological Areas**
- Moderate
 - High
 - Outstanding
- Rusty Patched Bumble Bee High Potential Zone Model**
- High Potential Zones (where presence should be presumed for ESA Section 7 purposes) 05/30/2023

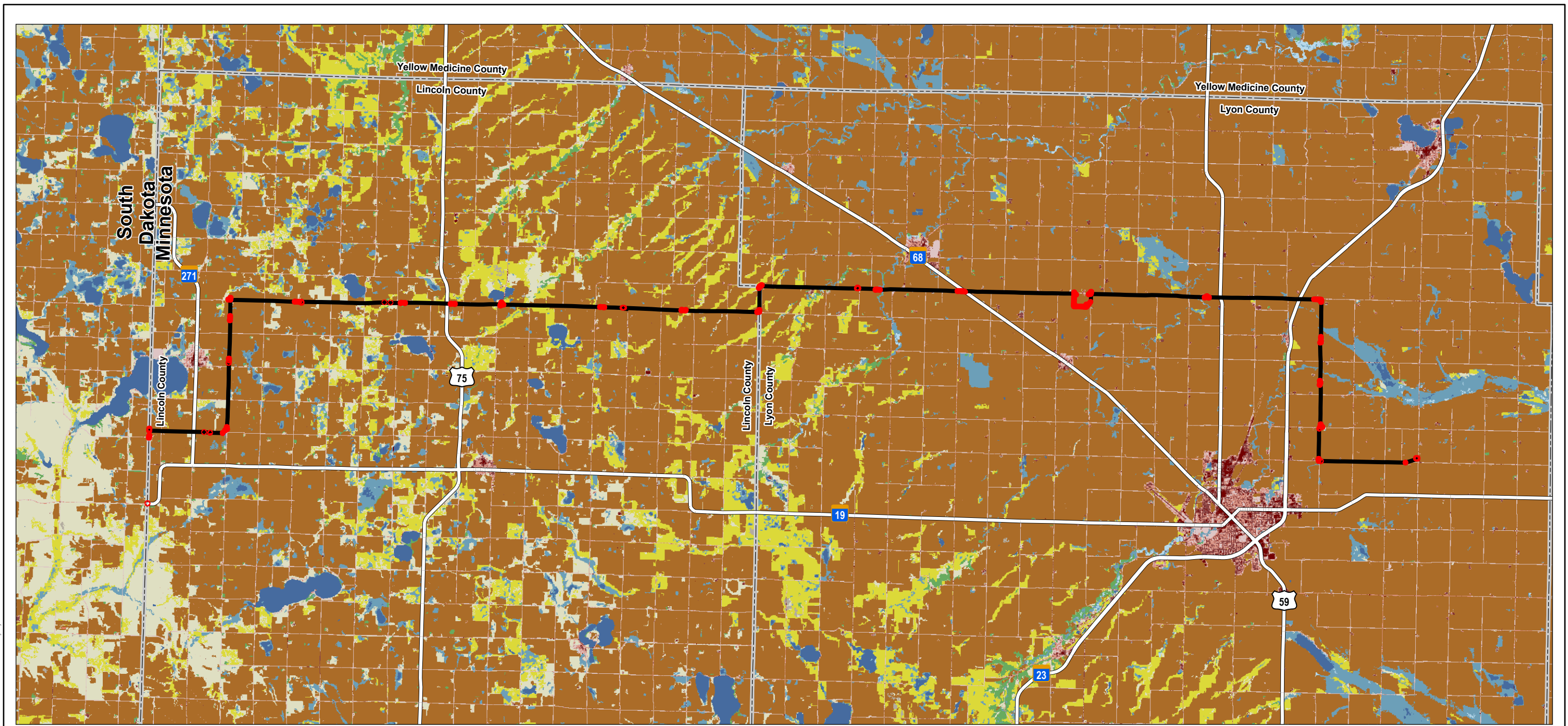


Project Location Prepared by KJM on 2023-11-02
 Lincoln Co., MN to Lyon Co., MN
 Scott Co. to Dakota Co., MN

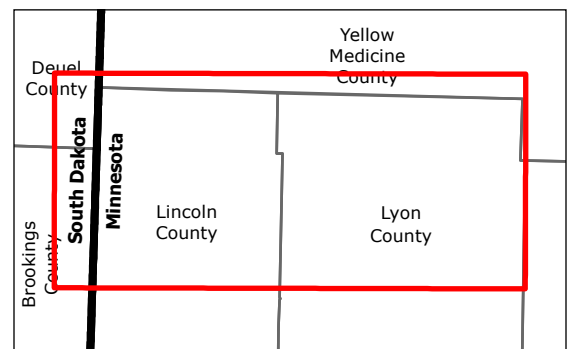
Client/Project 227705875
 Xcel Energy
 Brookings Co. to Lyon Co. & Helena to Hampton
 Minor Alteration

Figure No.
10b

Title
Unique and Natural Features - Helena to Hampton

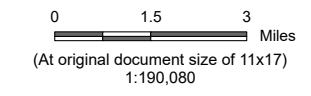


V:\2277\active\227705875\03_data\gis\proj\minor_alteration\minor_alteration.aprx Revised: 2023-11-02 By: kjmueller



Legend

Project Study Area	Barren Land
Temporary Workspace	Deciduous Forest
Major Highway	Evergreen Forest
County Boundary	Mixed Forest
National Land Cover Dataset	
Open Water	Shrub/Scrub
Developed, Open Space	Herbaceous
Developed, Low Intensity	Hay/Pasture
Developed, Medium Intensity	Cultivated Crops
Developed, High Intensity	Woody Wetlands
	Emergent Herbaceous Wetlands

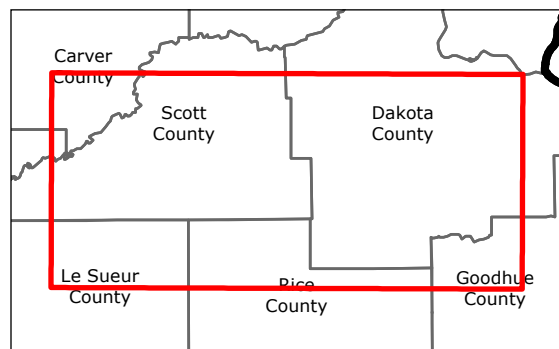
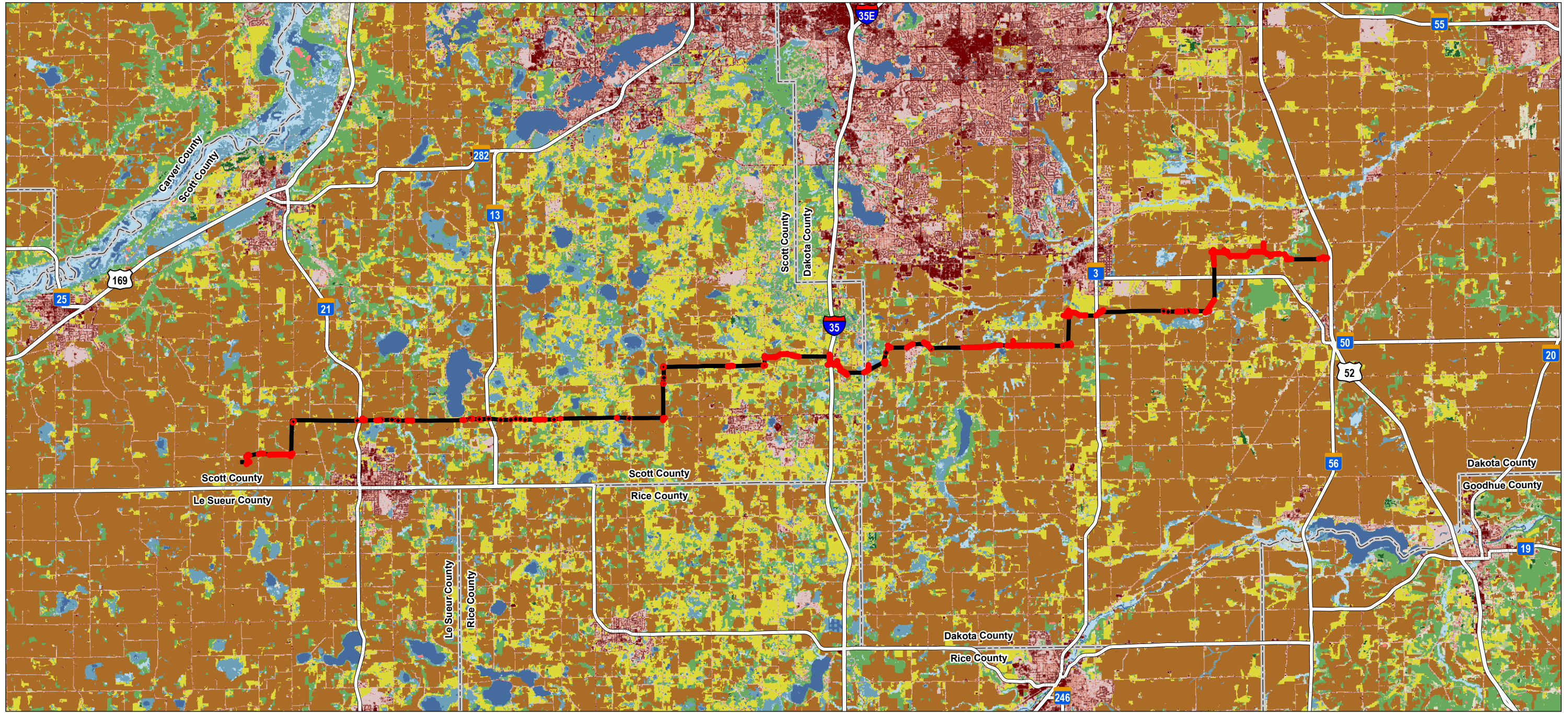


Project Location
Lincoln Co., MN to Lyon Co., MN
Scott Co. to Dakota Co., MN

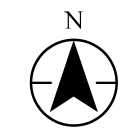
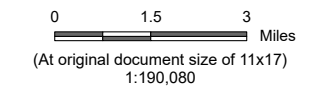
Client/Project
Xcel Energy
Brookings Co. to Lyon Co. & Helena to Hampton
Minor Alteration

Figure No.
11a

Title
Land Cover - Brookings Co. to Lyon Co.



- Legend**
- Project Study Area
 - Temporary Workspace
 - Major Highway
 - County Boundary
- National Land Cover Dataset**
- Open Water
 - Developed, Open Space
 - Developed, Low Intensity
 - Developed, Medium Intensity
 - Developed, High Intensity
 - Barren Land
 - Deciduous Forest
 - Evergreen Forest
 - Mixed Forest
 - Shrub/Scrub
 - Herbaceous
 - Hay/Pasture
 - Cultivated Crops
 - Woody Wetlands
 - Emergent Herbaceous Wetlands



Project Location
Lincoln Co., MN to Lyon Co., MN
Scott Co. to Dakota Co., MN

Client/Project
Xcel Energy
Brookings Co. to Lyon Co. & Helena to Hampton
Minor Alteration

Figure No.
11b

Title
Land Cover - Helena to Hampton

V:\277\active\227705875\03_data\gis\proj\minor_alteration\minor_alteration.aprx Revised: 2023-11-02 By: jmueller