

- Proposed Pipeline - Sandpiper
- Existing Enbridge Pipelines
- Foreign Pipes
- Transmission Lines
- SPREAD BREAK
- 1 Milepost - Sandpiper
- ✕ Potential Block Valve
- Environmental Survey Area (ESA)
- Tract Boundary
- Facility Boundary
- Previously Sited Facility Boundary
- Section Lines



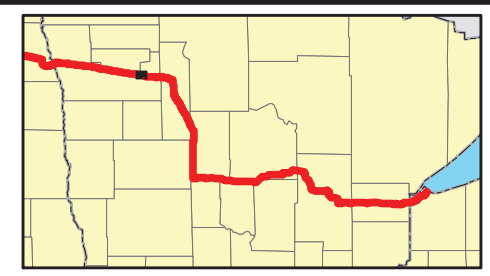
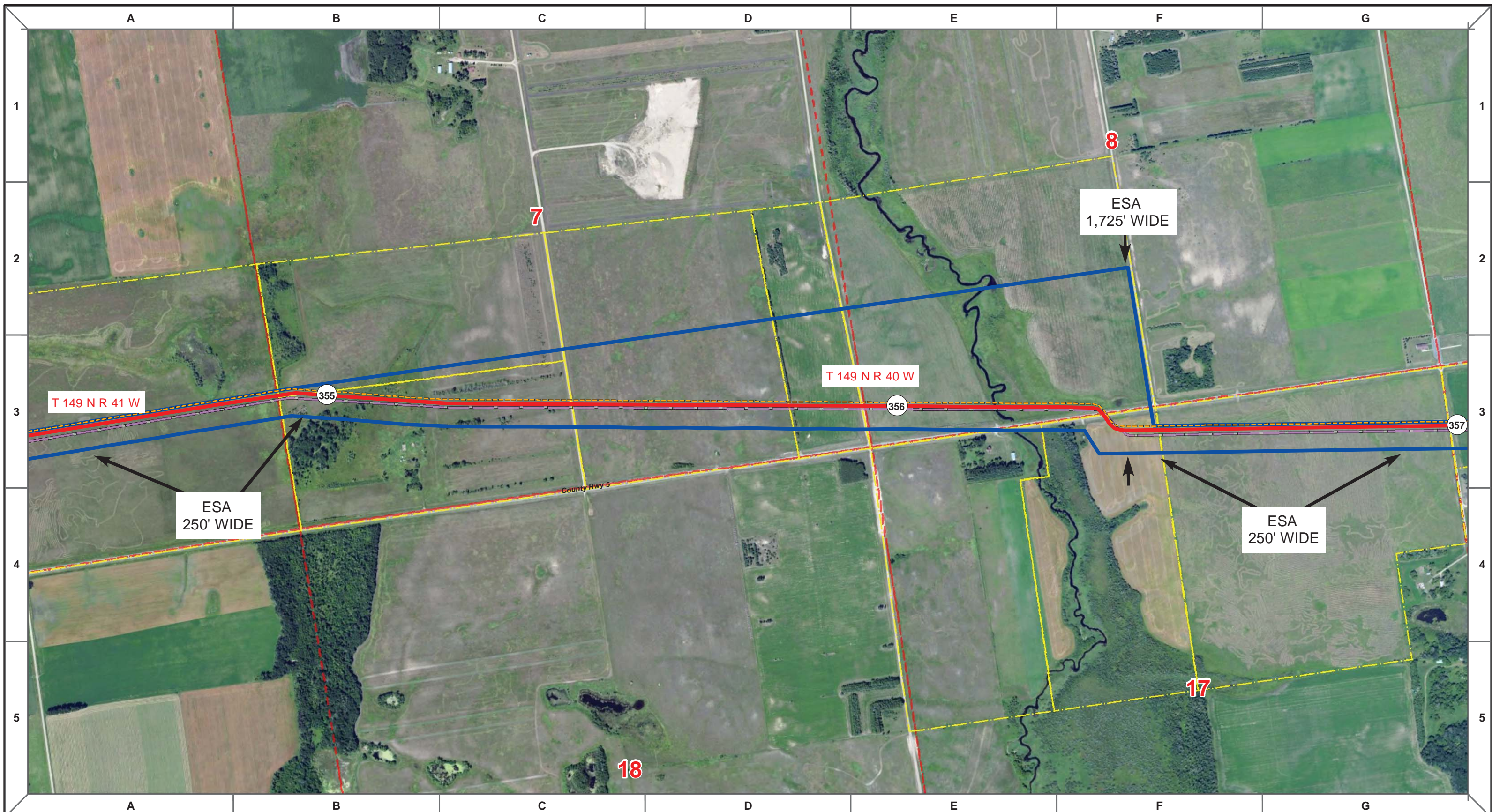
MLB		10/10/13	0		PUC Submittal
DRAWN	CHECKED	APPROVED	DATE	REV NO.	DESCRIPTION

ENBRIDGE PIPELINES (NORTH DAKOTA) LLC

**PROPOSED SANDPIPER
PIPELINE PROJECT
ROUTE MAP
Polk County, MN**

DRAWN: MLB	CHECKED: --
DATE: Oct 18, 2013	SCALE: AS SHOWN

Spread:5
Map: 24 of 128



Proposed Pipeline - Sandpiper	Milepost - Sandpiper	Tract Boundary
Existing Enbridge Pipelines	Potential Block Valve	Facility Boundary
Foreign Pipes	Environmental Survey Area (ESA)	Previously Sited Facility Boundary
Transmission Lines		Section Lines
SPREAD BREAK		

500 250 0 500 1,000 Feet

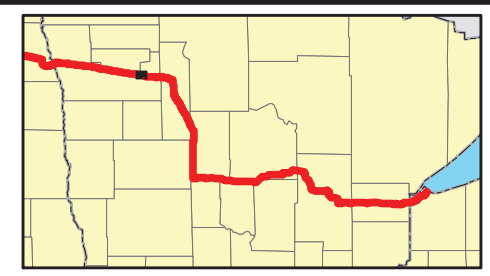
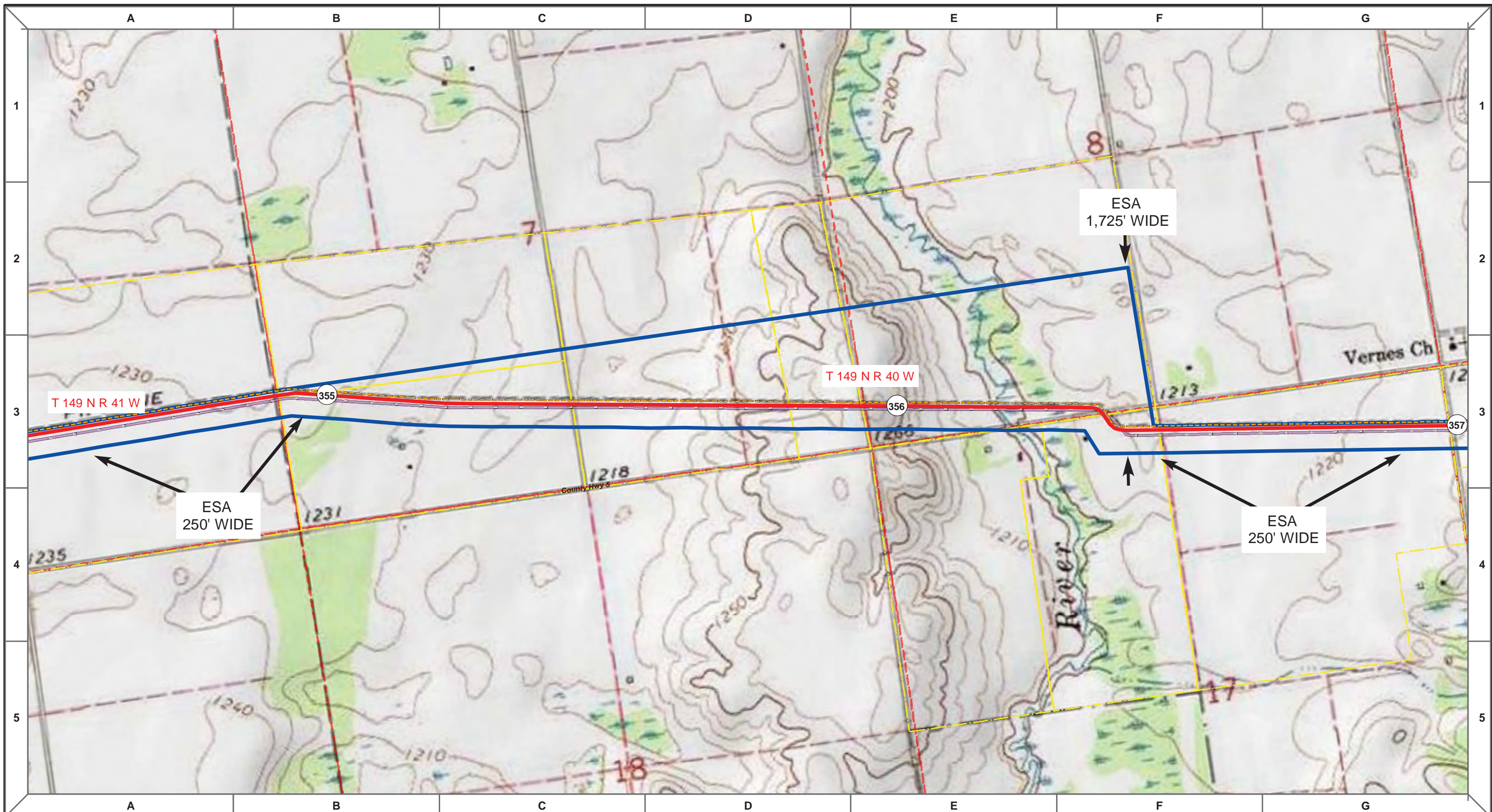
DRAWN	CHECKED	APPROVED	DATE	REV NO.	DESCRIPTION
MLB			10/10/13	0	PUC Submittal

ENBRIDGE PIPELINES (NORTH DAKOTA) LLC

**PROPOSED SANDPIPER PIPELINE PROJECT
ROUTE MAP
Polk County, MN**

<small>DRAWN:</small> MLB	<small>CHECKED:</small> --
<small>DATE:</small> Oct 18, 2013	<small>SCALE:</small> AS SHOWN

Spread:5 Map: 25 of 128



Proposed Pipeline - Sandpiper	Milepost - Sandpiper	Tract Boundary
Existing Enbridge Pipelines	Potential Block Valve	Facility Boundary
Foreign Pipes	Environmental Survey Area (ESA)	Previously Sited Facility Boundary
Transmission Lines		Section Lines
SPREAD BREAK		

500 250 0 500 1,000 Feet

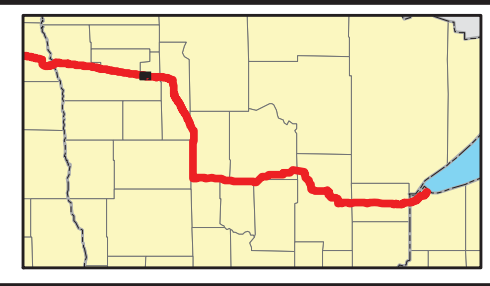
MLB	DATE	REV NO.	DESCRIPTION
	10/10/13	0	PUC Submittal

ENBRIDGE PIPELINES (NORTH DAKOTA) LLC

**PROPOSED SANDPIPER PIPELINE PROJECT
ROUTE MAP
Polk County, MN**

DRAWN: <i>MLB</i>	CHECKED: <i>--</i>
DATE: <i>Oct 18, 2013</i>	SCALE: <i>AS SHOWN</i>

Spread:5 Map: 25 of 128



Proposed Pipeline - Sandpiper	Milepost - Sandpiper	Tract Boundary
Existing Enbridge Pipelines	Potential Block Valve	Facility Boundary
Foreign Pipes	Environmental Survey Area (ESA)	Previously Sited Facility Boundary
Transmission Lines		Section Lines
SPREAD BREAK		

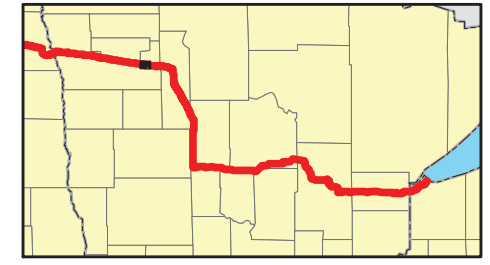
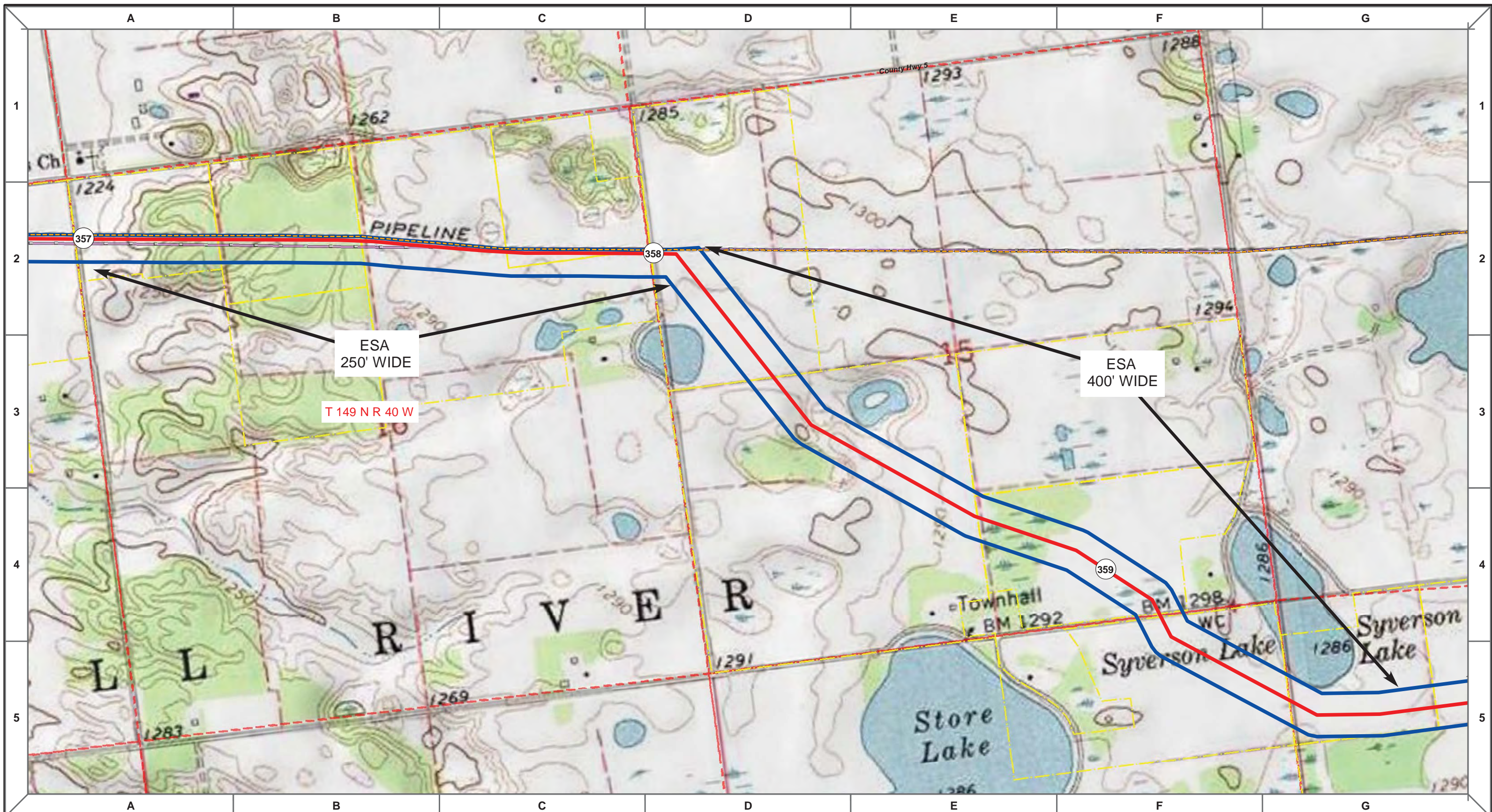
MLB		10/10/13	0							
DRAWN	CHECKED	APPROVED	DATE	REV NO.	DESCRIPTION					

ENBRIDGE PIPELINES (NORTH DAKOTA) LLC

**PROPOSED SANDPIPER PIPELINE PROJECT
ROUTE MAP
Polk County, MN**

DRAWN: <i>MLB</i>	CHECKED: --
DATE: Oct 18, 2013	SCALE: AS SHOWN

Spread:5
Map: 26 of 128



- Proposed Pipeline - Sandpiper
- Existing Enbridge Pipelines
- Foreign Pipes
- Transmission Lines
- SPREAD BREAK
- 1 Milepost - Sandpiper
- ✕ Potential Block Valve
- Environmental Survey Area (ESA)
- Tract Boundary
- Facility Boundary
- Previously Sited Facility Boundary
- Section Lines



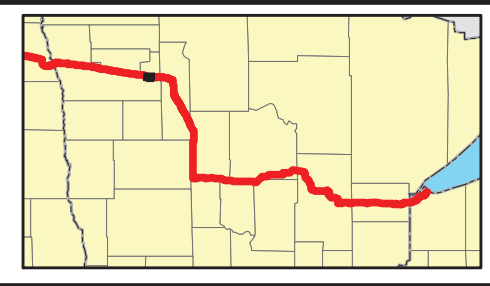
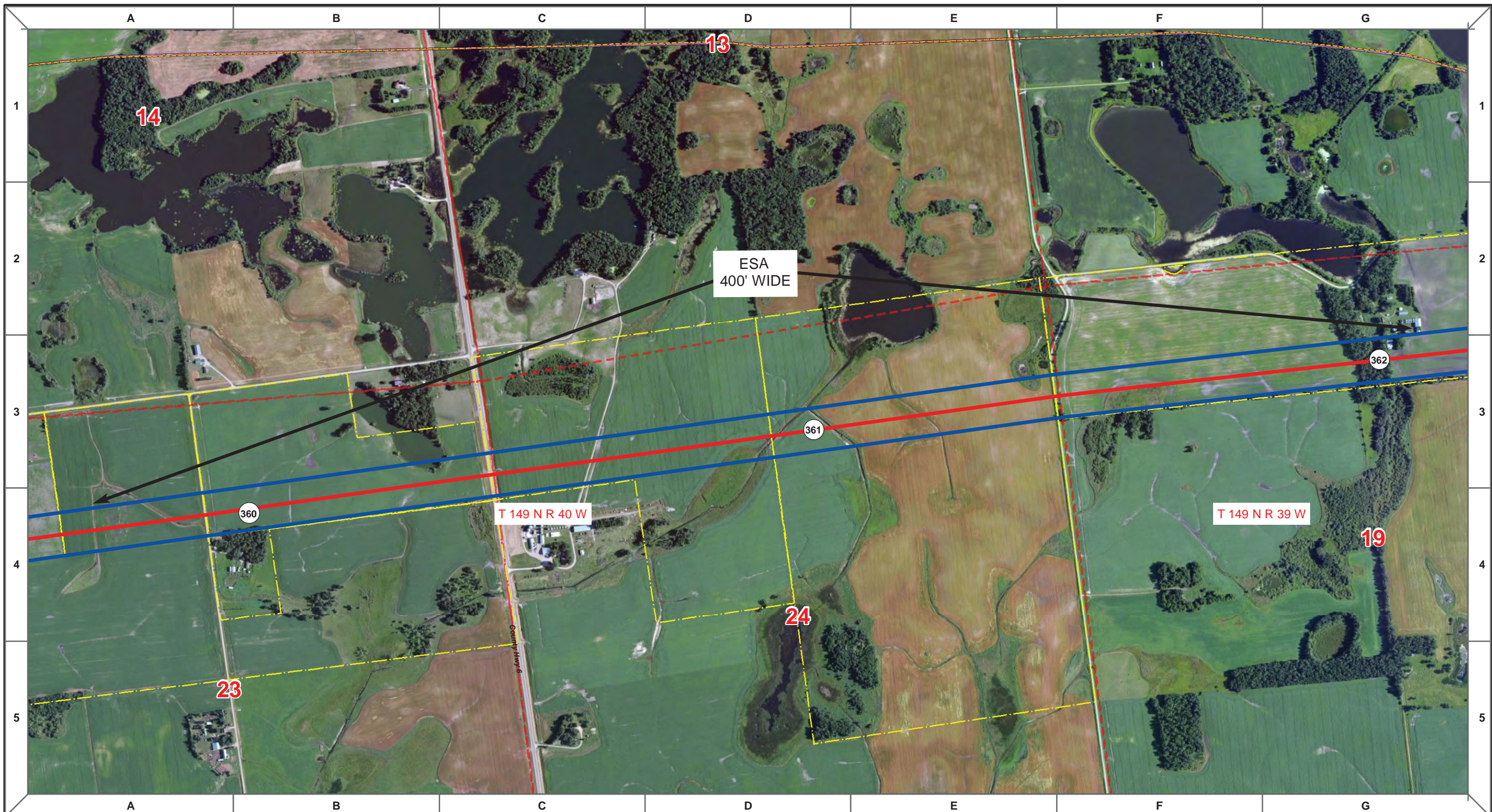
MLB	10/10/13	0	PUC Submittal	DRAWN	CHECKED	APPROVED	DATE	REV NO.	DESCRIPTION

ENBRIDGE PIPELINES (NORTH DAKOTA) LLC

**PROPOSED SANDPIPER PIPELINE PROJECT
ROUTE MAP
Polk County, MN**

DRAWN: MLB	CHECKED: --
DATE: Oct 18, 2013	SCALE: AS SHOWN

Spread:5 Map: 26 of 128



Proposed Pipeline - Sandpiper	Milepost - Sandpiper	Tract Boundary
Existing Enbridge Pipelines	Potential Block Valve	Facility Boundary
Foreign Pipes	Environmental Survey Area (ESA)	Previously Sited Facility Boundary
Transmission Lines		Section Lines
SPREAD BREAK		

500 250 0 500 1,000 Feet

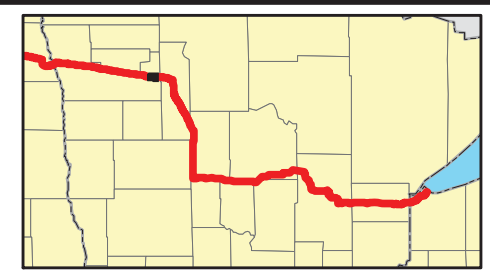
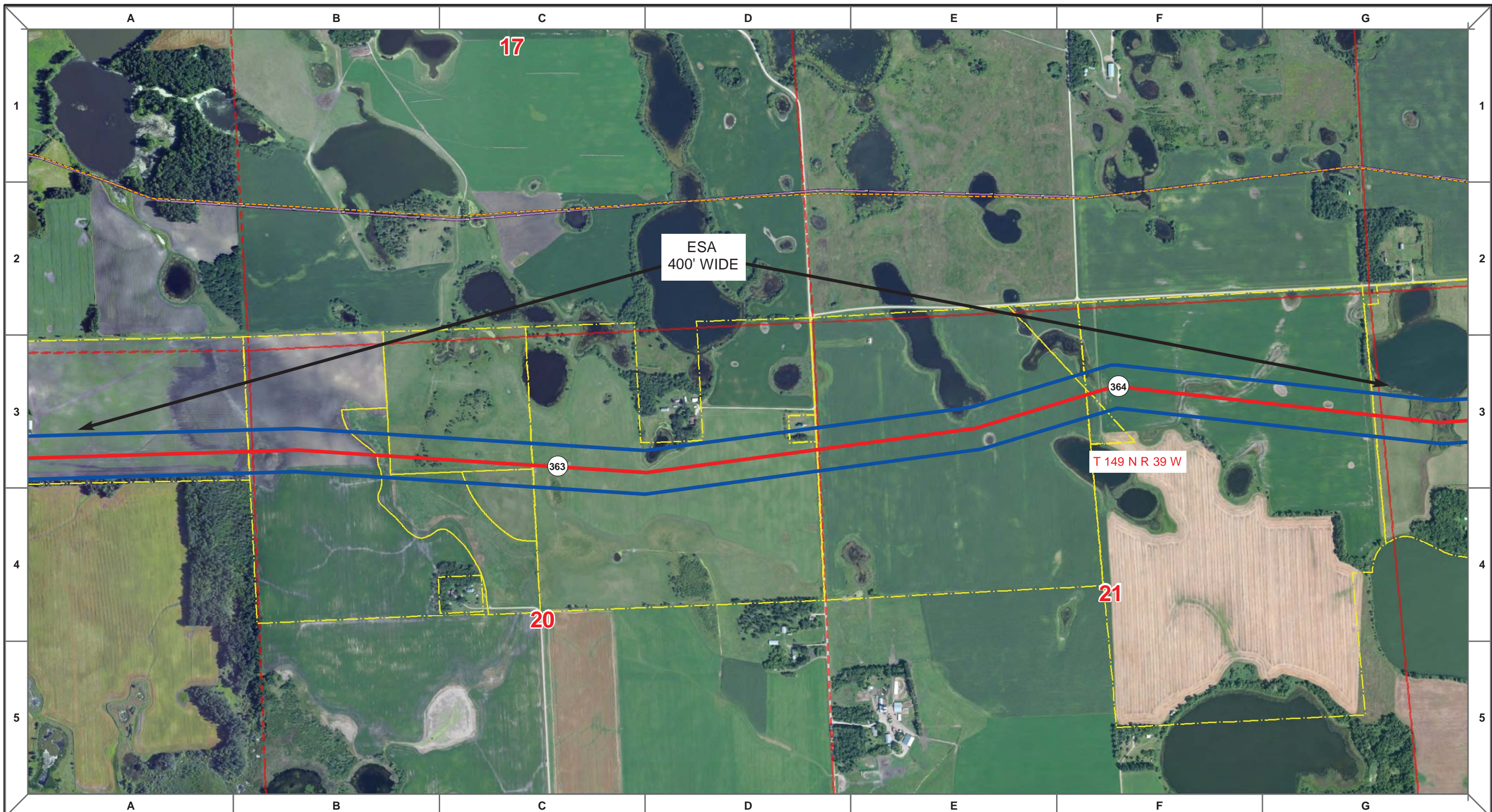
MLB		10/10/13	0		
DRAWN	CHECKED	APPROVED	DATE	REV NO.	DESCRIPTION

ENBRIDGE PIPELINES (NORTH DAKOTA) LLC

**PROPOSED SANDPIPER PIPELINE PROJECT
ROUTE MAP
Polk County, MN**

DRAWN: <i>MLB</i>	CHECKED: <i>--</i>
DATE: <i>Oct 18, 2013</i>	SCALE: <i>AS SHOWN</i>

Spread:5 Map: 27 of 128



Proposed Pipeline - Sandpiper	Milepost - Sandpiper	Tract Boundary
Existing Enbridge Pipelines	Potential Block Valve	Facility Boundary
Foreign Pipes	Environmental Survey Area (ESA)	Previously Sited Facility Boundary
Transmission Lines		Section Lines
SPREAD BREAK		

500 250 0 500 1,000 Feet

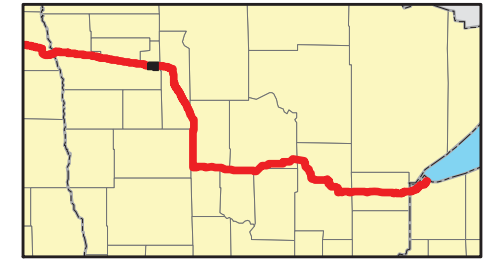
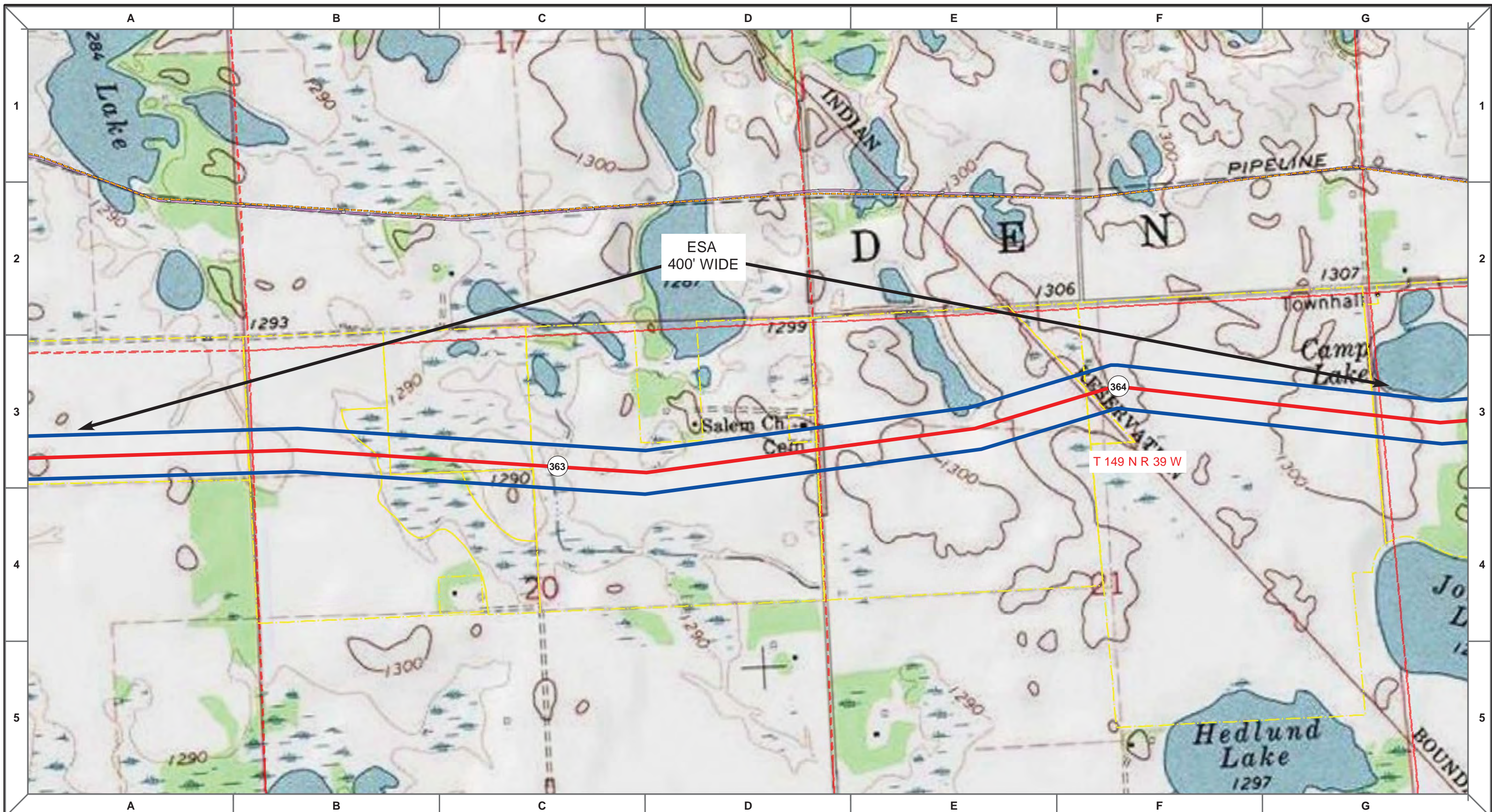
DRAWN	CHECKED	APPROVED	DATE	REV NO.	DESCRIPTION
MLB			10/10/13	0	PUC Submittal

ENBRIDGE PIPELINES (NORTH DAKOTA) LLC

**PROPOSED SANDPIPER PIPELINE PROJECT
ROUTE MAP
Polk County, MN**

<small>DRAWN:</small> MLB	<small>CHECKED:</small> --
<small>DATE:</small> Oct 18, 2013	<small>SCALE:</small> AS SHOWN

Spread:5 Map: 28 of 128



- Proposed Pipeline - Sandpiper
- - - Existing Enbridge Pipelines
- - - Foreign Pipes
- - - Transmission Lines
- - - SPREAD BREAK
- 1 Milepost - Sandpiper
- ▶ Potential Block Valve
- Environmental Survey Area (ESA)
- Tract Boundary
- Facility Boundary
- Previously Sited Facility Boundary
- Section Lines



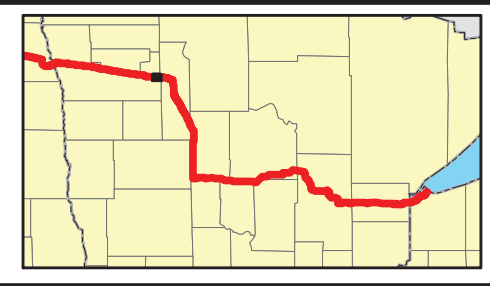
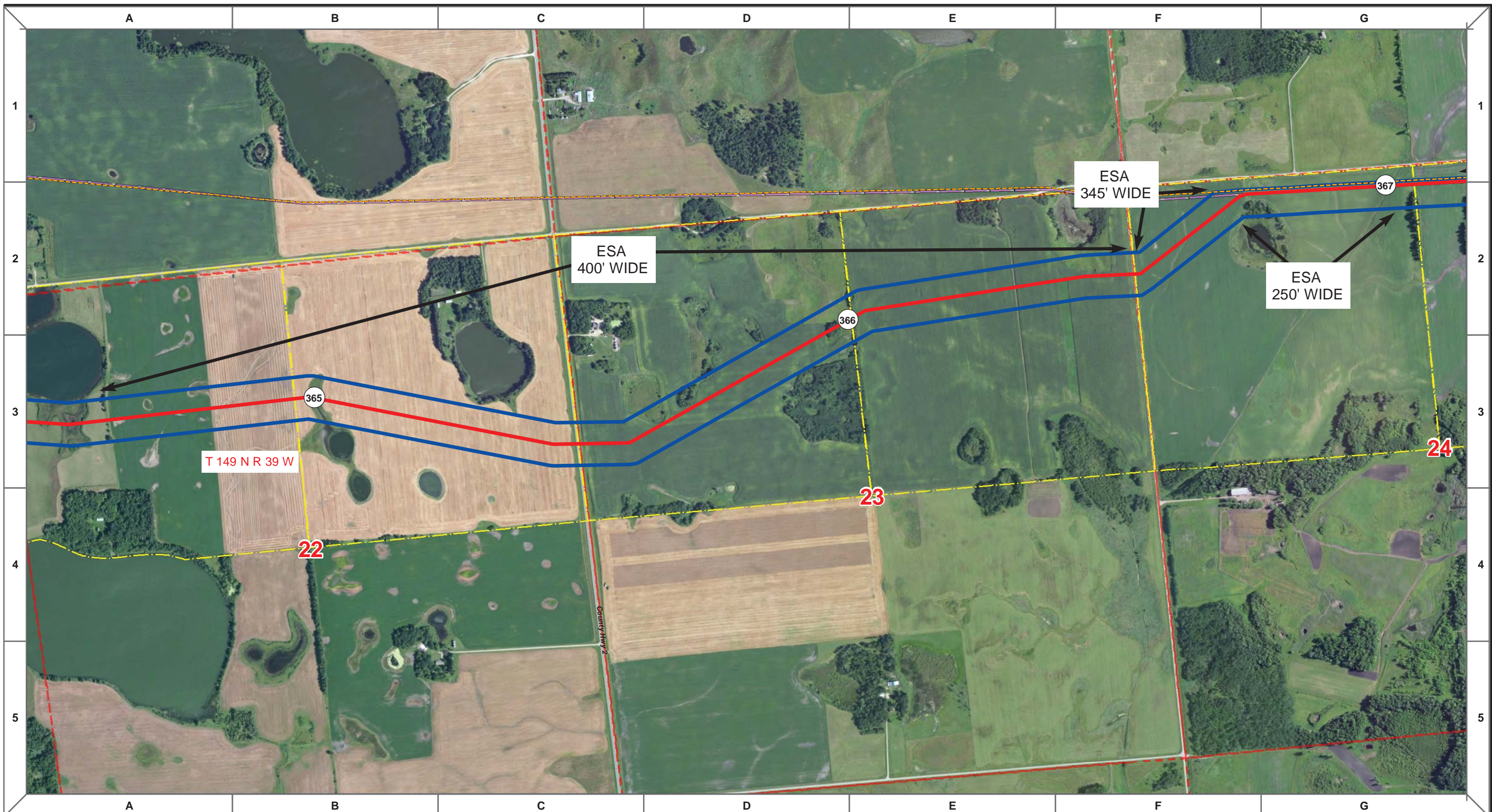
MLB	10/10/13	0	PUC Submittal	DRAWN	MLB
DRAWN	CHECKED	APPROVED	DATE	REV NO.	DESCRIPTION

ENBRIDGE PIPELINES (NORTH DAKOTA) LLC

**PROPOSED SANDPIPER
PIPELINE PROJECT
ROUTE MAP
Polk County, MN**

DRAWN: MLB	CHECKED: --
DATE: Oct 18, 2013	SCALE: AS SHOWN

Spread:5
Map: 28 of 128



- Proposed Pipeline - Sandpiper
- Existing Enbridge Pipelines
- Foreign Pipes
- Transmission Lines
- SPREAD BREAK
- 1 Milepost - Sandpiper
- ✕ Potential Block Valve
- Environmental Survey Area (ESA)
- Tract Boundary
- Facility Boundary
- Previously Sited Facility Boundary
- Section Lines

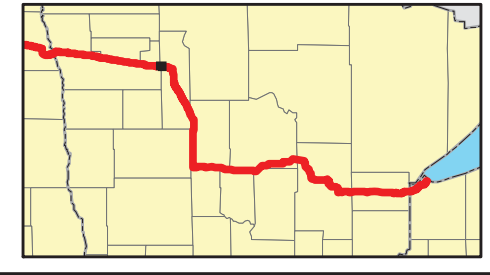
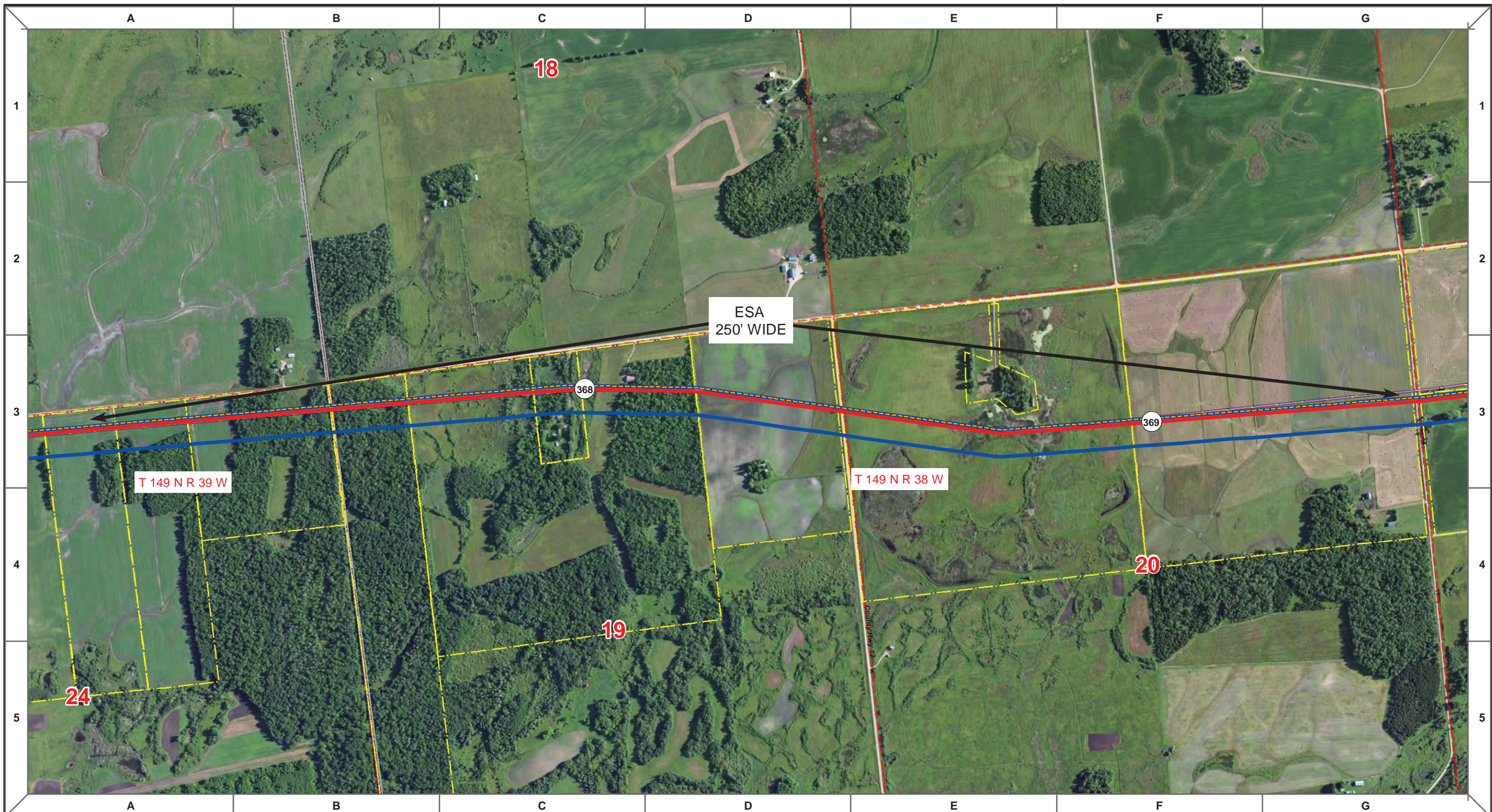
MLB	DATE	REV NO.	DESCRIPTION
	10/10/13	0	PUC Submittal

ENBRIDGE PIPELINES (NORTH DAKOTA) LLC

**PROPOSED SANDPIPER
PIPELINE PROJECT
ROUTE MAP
Polk County, MN**

DRAWN: <i>MLB</i>	CHECKED: <i>--</i>
DATE: <i>Nov 05, 2013</i>	SCALE: <i>AS SHOWN</i>

Spread:5
Map: 29 of 128



Proposed Pipeline - Sandpiper	Milepost - Sandpiper	Tract Boundary
Existing Enbridge Pipelines	Potential Block Valve	Facility Boundary
Foreign Pipes	Environmental Survey Area (ESA)	Previously Sited Facility Boundary
Transmission Lines		Section Lines
SPREAD BREAK		

500 250 0 500 1,000 Feet

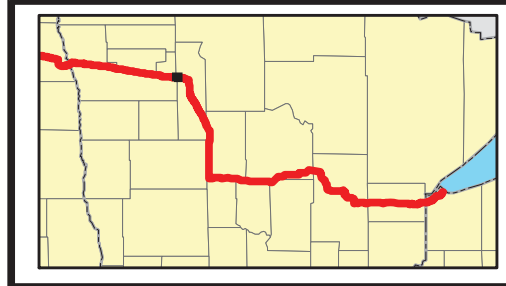
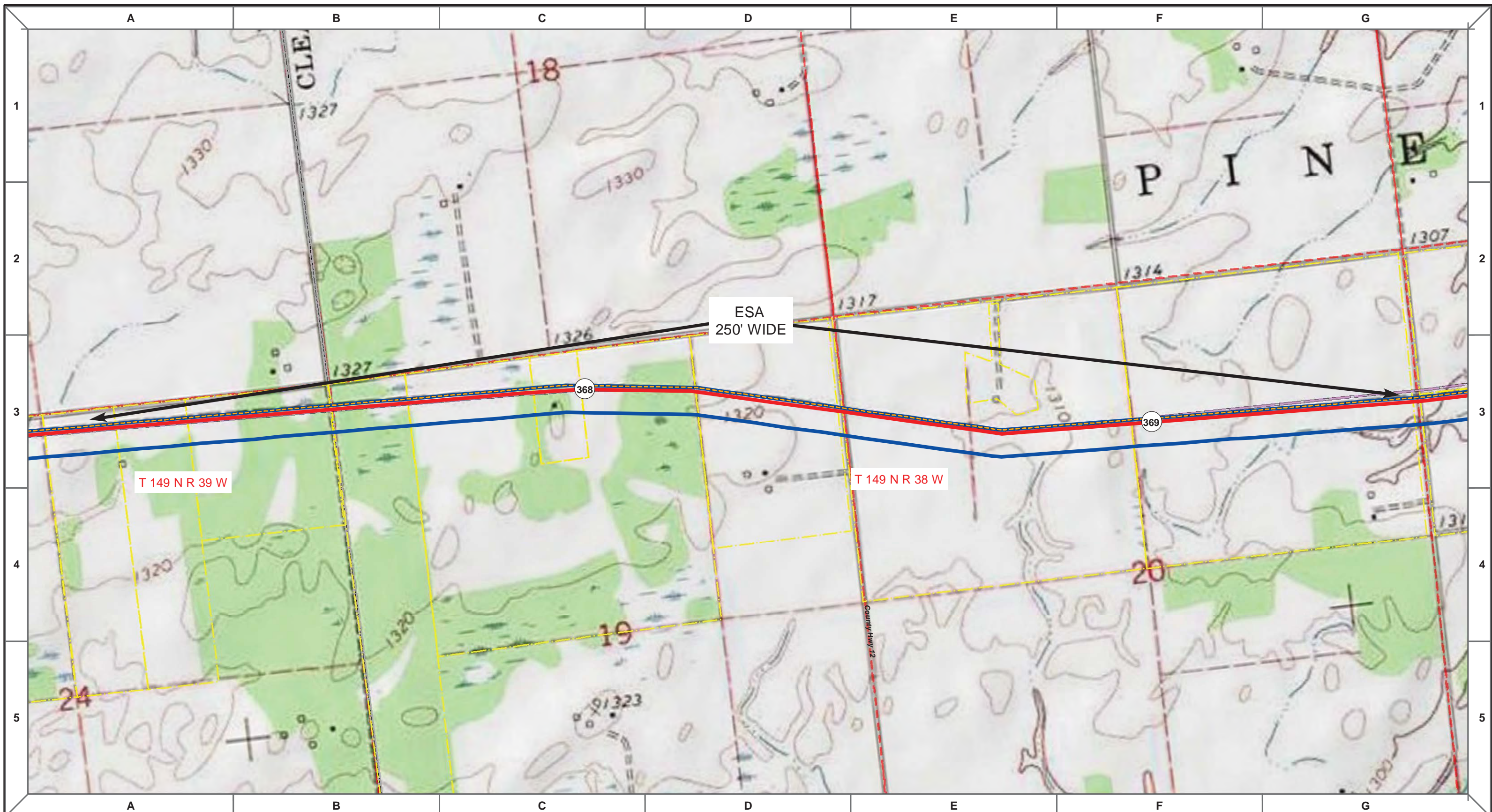
MLB	DATE	REV NO.	DESCRIPTION
	10/10/13	0	PUC Submittal

ENBRIDGE PIPELINES (NORTH DAKOTA) LLC

PROPOSED SANDPIPER PIPELINE PROJECT
ROUTE MAP
Polk & Clearwater County, MN

DRAWN: MLB	CHECKED: --
DATE: Oct 18, 2013	SCALE: AS SHOWN

Spread:5 Map: 30 of 128



Proposed Pipeline - Sandpiper	Milepost - Sandpiper	Tract Boundary
Existing Enbridge Pipelines	Potential Block Valve	Facility Boundary
Foreign Pipes	Environmental Survey Area (ESA)	Previously Sited Facility Boundary
Transmission Lines		Section Lines
SPREAD BREAK		

500 250 0 500 1,000 Feet

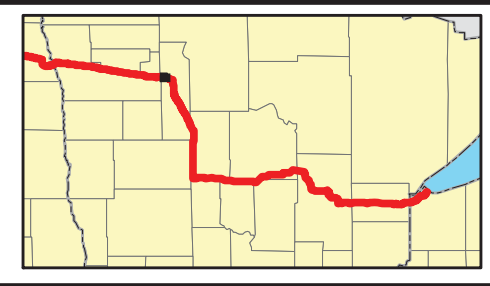
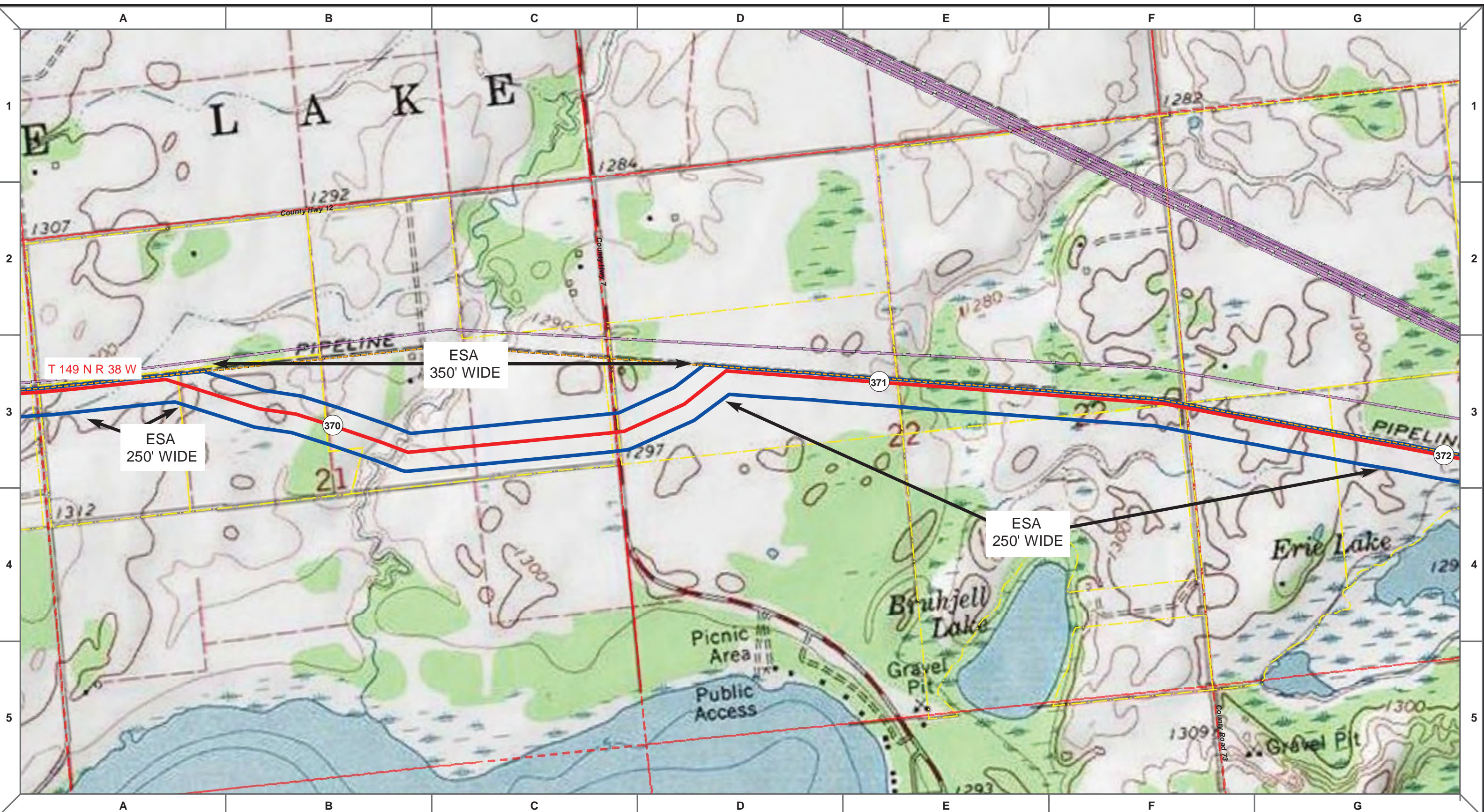
MLB	DATE	REV NO.	DESCRIPTION
	10/10/13	0	PUC Submittal

ENBRIDGE PIPELINES (NORTH DAKOTA) LLC

**PROPOSED SANDPIPER PIPELINE PROJECT
ROUTE MAP
Polk & Clearwater County, MN**

DRAWN: MLB	CHECKED: --
DATE: Oct 18, 2013	SCALE: AS SHOWN

Spread:5 Map: 30 of 128



— Proposed Pipeline - Sandpiper
— Existing Enbridge Pipelines
— Foreign Pipes
— Transmission Lines
— SPREAD BREAK

1 Milepost - Sandpiper
— Potential Block Valve
 Environmental Survey Area (ESA)

Tract Boundary
 Facility Boundary
 Previously Sited Facility Boundary
 Section Lines

500 250 0 500 1,000 Feet

MLB	DATE	REV NO.	DESCRIPTION
	10/10/13	0	PUC Submittal

PROPOSED SANDPIPER PIPELINE PROJECT
ROUTE MAP
 Clearwater County, MN

DRAWN: MLB	CHECKED: —
DATE: Oct 18, 2013	SCALE: AS SHOWN

Spread:5
Map: 31 of 128