

Appendix E

Agency Correspondences

Strohfus, Mark GRE-MG

From: Strohfus, Mark GRE-MG
Sent: Sunday, August 09, 2015 7:50 AM
To: 'dan.boerner@state.mn.us'
Cc: 'robert.burrell@state.mn.us'
Subject: Palisade 115 kV Transmission Project
Attachments: Palisade fact sheet_20150608.pdf; MNDOT ltr - Palisade Rev 1.pdf

Hello Dan and Bob,

Great River Energy is working on a transmission line project in Aitkin County. I had requested MNDOT Aeronautics comments in an June 10, 2015 letter to Ms. Becky Parzyck. My check of the MNDOT webpage indicate you are now the appropriate contacts. Please review and comment on the attached project.

I would greatly appreciate your response by Friday, August 14 because I plan to submit our Route Permit Application to the Public Utilities Commission the following week.

If you have any questions, please contact me.

Thank You,

Mark Strohfus

Environmental Project Lead

Great River Energy

12300 Elm Creek Boulevard

Maple Grove, MN 55369-4718

Tel: 763-445-5210 | Cell: 612-961-9820

MStrohfus@GREnergy.com



12300 Elm Creek Blvd • Maple Grove, Minnesota 55369-4718 • 763-445-5000 • Fax 763-445-5050 • www.greatriverenergy.com

June 10, 2015

Ms. Becky Parzyck
Office of Aeronautics
Minnesota Department of Transportation
222 E. Plato Blvd.
St. Paul, MN 55107-1618

RE: Proposed Bull Moose 115 kV Transmission Project – Cass Aitkin County

Dear Ms. Parzyck:

Great River Energy is currently gathering data to be used in preparation of a regulatory application necessary to obtain approval to construct the proposed Palisade 115 kilovolt (kV) Transmission Project in Cass Aitkin County (see enclosed fact sheet and map). Great River Energy intends to seek a Route Permit for the Project from the Minnesota Public Utilities Commission. The proposed Project is needed to provide power to a new petroleum pump station (Palisade Pump Station) being proposed by Enbridge Energy.

The Project will include approximately 13 miles of 115 kV transmission line (see fact sheet map). The new line will begin near 390th Street and U.S. Hwy 169 at a new breaker station connected to the existing Minnesota Power 115 kV transmission line. The line will generally follow adjacent to Hwy 169 approximately 13 miles north to the new pump station near 510th Land and Hwy 169. In most cases, round wood transmission structures will be used that will range in height from 70 to 80 feet above ground.

Great River Energy is requesting information on the possible effects of the proposed Project on airports or airstrips in the project area. The proposed Project is over 3 miles northeast of the Aitkin Municipal Airport, approximately 13 miles south of the Hill City Quadna Mountain Airport, and approximately 14 miles east of the Isedor Iverson Airport.

We would appreciate receiving any written comments from your office by Monday, July 13, 2015.

Ms. Becky Parzyck
June 10, 2015
Page 2

If you have any questions about this proposed project, please contact me at (763) 445-5210 or MStrohfus@GREnergy.com.

Thank you for your attention to this important project.

Sincerely,
GREAT RIVER ENERGY

A handwritten signature in black ink that reads "Mark Strohfus". The signature is written in a cursive style with a large, sweeping "M" and "S".

Mark Strohfus
Environmental Projects Lead

Enclosures: Fact Sheet/Project Map

S:\Legal\Environmental\Transmission\Projects\Palisade\Agencies\MnDOT FAAMNDOT ltr - Palisade.docx

Palisade 115 kV Transmission Project



GREAT RIVER ENERGY
12300 Elm Creek Blvd
Maple Grove, MN 55369-4718
1-888-521-0130
www.greatriverenergy.com



MILLE LACS ENERGY COOPERATIVE
PO Box 230
Aitkin, MN 56431
1-800-450-2191
www.mlecmn.net

Project Need

Great River Energy, wholesale electric supplier to Mille Lacs Energy Cooperative and 27 other electric cooperatives, proposes to construct a new overhead 115 kilovolt (kV) transmission line and breaker station that is needed to provide electric power to a new petroleum pump station being proposed by Enbridge Energy (Enbridge). The Enbridge pump station is part of a pipeline replacement project that will require permits from the Minnesota Public Utilities Commission before it can be constructed.

Proposed Project

Two route options are proposed for the transmission line to provide alternatives for crossing the Mississippi River (see map on back).

East option

Under the East option the 13-mile transmission line would originate at a new breaker station proposed near the intersection of 390th Street and U.S. Highway 169. From there the route will follow Hwy 169 north for 13 miles, crossing the Mississippi River adjacent to Hwy 169 and terminating at the pump station location on the east side of Hwy 169 at 510th Lane.

West option

Under the West option the 13.5-mile transmission line would follow Hwy 169 from the proposed breaker station location and turn west on 430th Street. The route would continue for one-half mile to the termination of 430th Street. From here the route would follow a property line northwest across the Mississippi River to County Road 21. The route would follow County Road 21 for 1.2 miles back to Hwy 169 and north to the pump station location.

The proposed transmission line will consist of wood poles that are 350 to 400 feet apart and 70 to 80 feet above ground. Guy wires and anchors, when necessary, will be used to stabilize poles. Some specialty poles may also be required. The new transmission line will require a 100-foot-wide right of way, 50 feet on each side of the centerline. The opportunity to share road right of way along Hwy 169 will minimize easement requirements. Trees and vegetation in the right of way will be removed to provide a safe construction, operation and maintenance area.

Permitting

Great River Energy will submit a route permit application for the proposed Project to the Minnesota Public Utilities Commission (MPUC). During the route permit process, the public and regulatory agencies will have numerous opportunities to provide input on the proposed Project, including public meetings facilitated by the MPUC and Department of Commerce Energy Environmental Review and Analysis (DOC EERA) staff. The DOC EERA will prepare an Environmental Assessment (EA) for the Project. Construction cannot begin until an approved route permit is granted by the MPUC.

Easements/Trees

Once the Project has been approved, Great River Energy will contact landowners to present an easement and offer of compensation. At that time, information will be shared on tree removal, construction access and practices, and restoration of the right of way.

Project Schedule

Public contacts and/or notifications -----	2 nd quarter 2015
Project permitting -----	Summer 2015 to spring 2016
Survey/design -----	1 st quarter 2016
Easement acquisition/right-of-way permits -----	Summer/fall 2016
Transmission line construction -----	Starts 2 nd quarter 2017
Energyization -----	Winter 2017/2018



Typical Transmission Breaker Station



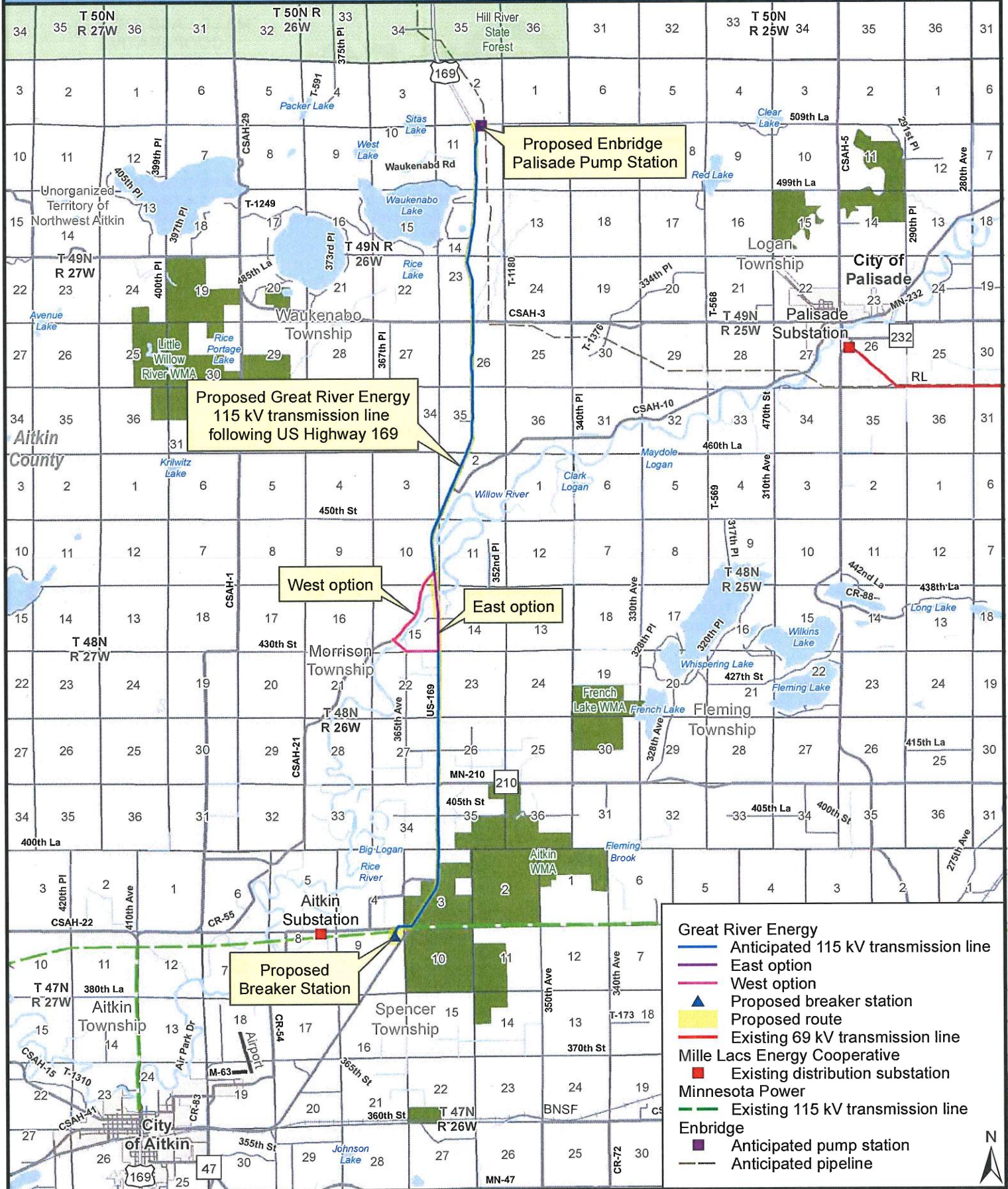
Typical 115 kV Wood Transmission Structure

For project updates and information, visit greatriverenergy.com/palisade or contact:

Dan Leshner
Sr. Field Representative
Great River Energy – Transmission Land Rights
(763) 445-5975 or (612) 817-9910
dlesher@grenergy.com

Mark Strohfus
Environmental Project Lead
Great River Energy
(763) 445-5210
mstrohfus@grenergy.com

Proposed Project



Great River Energy

- Anticipated 115 kV transmission line
- East option
- West option
- Proposed breaker station
- Proposed route

Mille Lacs Energy Cooperative

- Existing 69 kV transmission line

Minnesota Power

- Existing 115 kV transmission line

Enbridge

- Anticipated pump station
- Anticipated pipeline



Strohfus, Mark GRE-MG

From: Boerner, Daniel (DOT) [dan.boerner@state.mn.us]
Sent: Monday, August 17, 2015 9:48 AM
To: Strohfus, Mark GRE-MG
Cc: Burrell, Robert (DOT)
Subject: Hi Mark ... we have no issue ... RE: Palisade 115 kV Transmission Project

Hi Mark,

We have no issues with the proposed Palisade 115kv transmission line.

Dan



Daniel P. Boerner, PE
Regional Airport Engineer
Mn/DOT • Office of Aeronautics

Mail Stop 410
222 East Plato Blvd. • St. Paul, MN 55107-1618
Office: (651) 234-7244 • Fax: (651) 296-9089
Email: dan.boerner@state.mn.us

From: Strohfus, Mark GRE-MG [mailto:MStrohfu@GREnergy.com]
Sent: Sunday, August 09, 2015 7:50 AM
To: Boerner, Daniel (DOT)
Cc: Burrell, Robert (DOT)
Subject: Palisade 115 kV Transmission Project

Hello Dan and Bob,

Great River Energy is working on a transmission line project in Aitkin County. I had requested MNDOT Aeronautics comments in an June 10, 2015 letter to Ms. Becky Parzyck. My check of the MNDOT webpage indicate you are now the appropriate contacts. Please review and comment on the attached project.

I would greatly appreciate your response by Friday, August 14 because I plan to submit our Route Permit Application to the Public Utilities Commission the following week.

If you have any questions, please contact me.

Thank You,

Mark Strohfus

Environmental Project Lead

Great River Energy

12300 Elm Creek Boulevard

Maple Grove, MN 55369-4718

Tel: 763-445-5210 | Cell: 612-961-9820

MStrohfus@GREnergy.com

NOTICE TO RECIPIENT: The information contained in this message from Great River Energy and any attachments are confidential and intended only for the named recipient(s). If you have received this message in error, you are prohibited from copying, distributing or using the information. Please contact the sender immediately by return email and delete the original message.



12300 Elm Creek Blvd • Maple Grove, Minnesota 55369-4718 • 763-445-5000 • Fax 763-445-5050 • www.greatriverenergy.com

June 10, 2015

Ms. Sarah Beimers, Manager
Government Programs and Compliance
Minnesota State Historic Preservation Office
345 Kellogg Boulevard West
St. Paul, MN 55102-1906

RE: Proposed Palisade 115 kV Project - Cass County

Dear Ms. Beimers:

Great River Energy is currently gathering data to be used in preparation of a regulatory application necessary to obtain approval to construct the proposed Palisade 115 kilovolt (kV) Transmission Project in Cass County (see enclosed fact sheet and map). Great River Energy intends to seek a Route Permit for the Project from the Minnesota Public Utilities Commission. The proposed Project is needed to provide power to a new petroleum pump station (Palisade Pump Station) being proposed by Enbridge Energy.

The Project will include approximately 13 miles of 115 kV transmission line (see fact sheet map). The new line will begin near 390th Street and U.S. Hwy 169 at a new breaker station connected to the existing Minnesota Power 115 kV transmission line. The line will generally follow adjacent to Hwy 169 approximately 13 miles north to the new pump station near 510th Land and Hwy 169. In most cases, round wood transmission structures will be used that will range in height from 70 to 80 feet above ground.

Merjent conducted a Phase 1A Cultural Resources Assessment of the proposed Project area (see enclosed letter). Merjent reported a single recorded archaeological site, which is external to the proposed route and would not be impacted by the project. Twelve previously recorded historic structures were identified in the Project area, but Merjent determined that they would not be impacted by the project and recommends against architectural review.

The Project will require a Section 10 permit from the US Army Corps of Engineers (USACE) because it crosses the Mississippi River, a Section 10 water. We understand the USACE will initiate the Section 106 requirements and consult with the SHPO under your joint Programmatic Agreement.

Ms. Biemers
June 10, 2015
Page 2

We would appreciate receiving any written comments from your office by Monday, July 13, 2015. If you have any questions about this proposed project, please contact me at (763) 445-5210 or MStrohfus@GREnergy.com.

Thank you for your attention to this important project.

Sincerely,
GREAT RIVER ENERGY

A handwritten signature in black ink that reads "Mark Strohfus". The signature is written in a cursive, flowing style.

Mark Strohfus
Environmental Projects Lead

Enclosures: Fact Sheet/Project Map; Merjent, May 15, 2015 letter

S:\Legal\Environmental\Transmission\Projects\Palisade\Agencies\SHPO\SHPO ltr - Palisade.docx

Palisade 115 kV Transmission Project



GREAT RIVER ENERGY
 12300 Elm Creek Blvd
 Maple Grove, MN 55369-4718
 1-888-521-0130
www.greatriverenergy.com



MILLE LACS ENERGY COOPERATIVE
 PO Box 230
 Aitkin, MN 56431
 1-800-450-2191
www.mlecmn.net

Project Need

Great River Energy, wholesale electric supplier to Mille Lacs Energy Cooperative and 27 other electric cooperatives, proposes to construct a new overhead 115 kilovolt (kV) transmission line and breaker station that is needed to provide electric power to a new petroleum pump station being proposed by Enbridge Energy (Enbridge). The Enbridge pump station is part of a pipeline replacement project that will require permits from the Minnesota Public Utilities Commission before it can be constructed.

Proposed Project

Two route options are proposed for the transmission line to provide alternatives for crossing the Mississippi River (see map on back).

East option

Under the East option the 13-mile transmission line would originate at a new breaker station proposed near the intersection of 390th Street and U.S. Highway 169. From there the route will follow Hwy 169 north for 13 miles, crossing the Mississippi River adjacent to Hwy 169 and terminating at the pump station location on the east side of Hwy 169 at 510th Lane.

West option

Under the West option the 13.5-mile transmission line would follow Hwy 169 from the proposed breaker station location and turn west on 430th Street. The route would continue for one-half mile to the termination of 430th Street. From here the route would follow a property line northwest across the Mississippi River to County Road 21. The route would follow County Road 21 for 1.2 miles back to Hwy 169 and north to the pump station location.

The proposed transmission line will consist of wood poles that are 350 to 400 feet apart and 70 to 80 feet above ground. Guy wires and anchors, when necessary, will be used to stabilize poles. Some specialty poles may also be required. The new transmission line will require a 100-foot-wide right of way, 50 feet on each side of the centerline. The opportunity to share road right of way along Hwy 169 will minimize easement requirements. Trees and vegetation in the right of way will be removed to provide a safe construction, operation and maintenance area.

Permitting

Great River Energy will submit a route permit application for the proposed Project to the Minnesota Public Utilities Commission (MPUC). During the route permit process, the public and regulatory agencies will have numerous opportunities to provide input on the proposed Project, including public meetings facilitated by the MPUC and Department of Commerce Energy Environmental Review and Analysis (DOC EERA) staff. The DOC EERA will prepare an Environmental Assessment (EA) for the Project. Construction cannot begin until an approved route permit is granted by the MPUC.

Easements/Trees

Once the Project has been approved, Great River Energy will contact landowners to present an easement and offer of compensation. At that time, information will be shared on tree removal, construction access and practices, and restoration of the right of way.

Project Schedule

Public contacts and/or notifications -----	2 nd quarter 2015
Project permitting -----	Summer 2015 to spring 2016
Survey/design -----	1 st quarter 2016
Easement acquisition/right-of-way permits -----	Summer/fall 2016
Transmission line construction -----	Starts 2 nd quarter 2017
Energyization -----	Winter 2017/2018



Typical Transmission Breaker Station



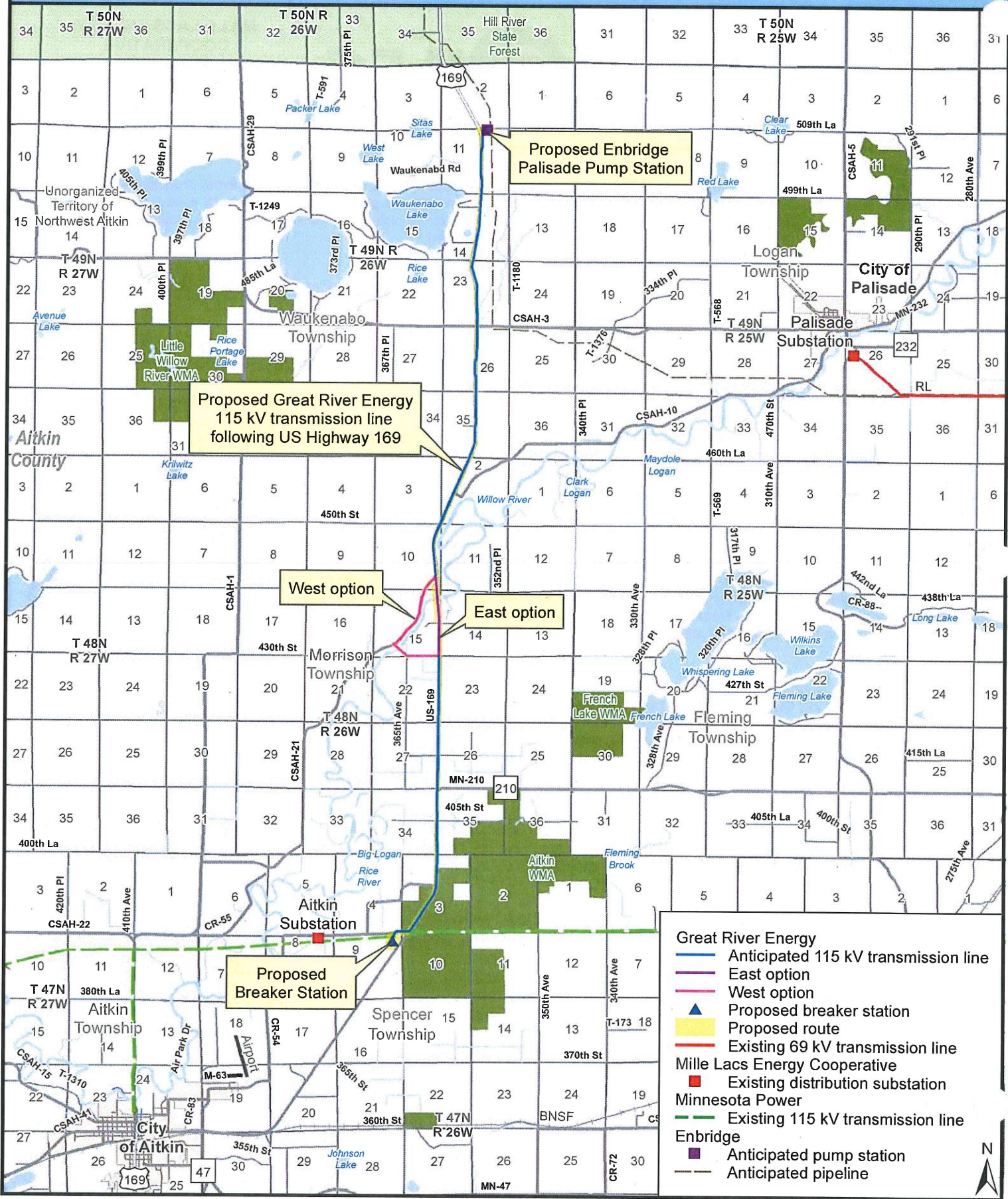
Typical 115 kV Wood Transmission Structure

For project updates and information, visit greatriverenergy.com/palisade or contact:

Dan Leshner
 Sr. Field Representative
 Great River Energy – Transmission Land Rights
 (763) 445-5975 or (612) 817-9910
dlesher@greenergy.com

Mark Strohfus
 Environmental Project Lead
 Great River Energy
 (763) 445-5210
mstrohfus@greenergy.com

Proposed Project



Proposed Great River Energy
115 kV transmission line
following US Highway 169

Proposed Enbridge
Palisade Pump Station

West option

East option

Proposed
Breaker Station

Great River Energy

- Anticipated 115 kV transmission line
- East option
- West option

Proposed breaker station

Proposed route

Existing 69 kV transmission line

Mille Lacs Energy Cooperative

- Existing distribution substation

Minnesota Power

- Existing 115 kV transmission line

Enbridge

- Anticipated pump station
- Anticipated pipeline





May 15, 2015

Carole Schmidt
Supervisor, Transmission Permitting and Compliance
Great River Energy
12300 Elm Creek Boulevard
Maple Grove, MN 55369-4718

Re: Phase IA Cultural Resources Assessment of the proposed Palisade 115 kilovolt (kV) Transmission Line Project, Aitkin County, Minnesota.

Dear Carole:

Merjent was contacted in April 2015 by Great River Energy to conduct a Phase IA Cultural Resources Assessment in support of the proposed Palisade 115 kilovolt (kV) Transmission Line Project (Project) in Aitkin County, Minnesota. Great River Energy proposes construction of the 13-13.5 mile long transmission line to provide electric power to a new petroleum pump station being proposed by an independent pipeline company.

Project Description

The Project includes two route alternatives for crossing the Mississippi River (**Figure 1**).

East option

Under the East option the 13-mile transmission line would originate at a new breaker station proposed near the intersection of 390th Street and U.S. Highway 169. From there the route will follow Highway 169 north for 13 miles, crossing the Mississippi River adjacent to Highway 169 and terminating at the pump station location on the east side of Highway 169 at 510th Lane.

West option

Under the West option the 13.5-mile transmission line would follow Highway 169 from the proposed breaker station location and turn west on 430th Street. The route would continue for one-half mile to the termination of 430th Street. From here the route would follow a property line northwest across the Mississippi River to County Road 21. The route would follow County Road 21 for 1.2 miles back to Highway 169 and north to the pump station location.

The proposed transmission line will be strung primarily on wood poles approximately 70 to 80 feet above ground and spaced 350 to 400 feet apart. Guy wires and anchors will be used to stabilize poles when necessary. The proposed transmission line will require a 100-foot-wide right of way, 50 feet on each side of the centerline. The opportunity to share road right of way along Highway 169 will minimize easement requirements. Trees and vegetation in the right of way will be removed to provide a safe construction, operation and maintenance area.

The proposed Project Phase IA study area includes the defined Project route and the surrounding tier of sections:

County/Township	Township	Range	Sections
Aitkin/Waukenabo	49N	25W	1-3, 10-15, 22-27, 34-36
Aitkin/ Morrison	48N	25W	1-3, 10, 11, 13, 14, 22, 23, 26, 27, 34, 35
Aitkin/ Spencer	47N	25W	2-5, 8-10

Literature Review

The main objective in reviewing the cultural resources literature is to identify the recorded cultural sites and assess the potential for unrecorded sites within the study area. The standard for considering a cultural property as significant is whether it meets the criteria for listing on the National Register of Historic Places (NRHP). The initial criterion for such listing is an age of 50 or more years. Beyond age, a property must retain integrity and be associated with significant historic trends, historic persons, building styles and craftsmanship, or the property must have the potential to provide significant information about the past.

Merjent reviewed and followed the published guidelines for conducting cultural resources literature reviews in Minnesota. The Minnesota State Historic Preservation Office (SHPO), located in the Minnesota History Center in St. Paul, maintains the state's prehistoric and historic archaeological site files, historic standing structure inventory files, and field survey reports.

Merjent examined the current topographic maps and aerial photographs to understand the modern land use of the study area and to provide a baseline for examining the historic maps and documents. Merjent also examined primary sources that have been digitized and made available online, such as the original land survey maps and the original land patent records.

2015 Merjent Cultural Resource Specialist Dan Born examined site files maintained at the SHPO in April 2015.

Previously Recorded Archaeological Resources

Merjent identified one (1) previously recorded archaeological site in the study area.

Site Number/Site Name/Site Type	Location (TRS)	Site Significance	Location Relative to Project
21AKbd/Site Lead/prehistoric	Privileged - Redacted	Unknown	East of Project corridor

The single prehistoric archaeological Site Lead is external to the proposed Project and will not be impacted by proposed construction activities.

Previously Recorded Standing Historic Structures

Merjent identified twelve (12) previously inventoried historic structures in the study area.

Site Number/Site Name/Site Type	Location (TRS)	Site Significance	Location Relative to Project
AK-MOR-001/Waldeck Ranch	Privileged - Redacted	Unevaluated	East of Project
AK-MOR-002/District 33 School House	Privileged - Redacted	Unevaluated	West of Project
AK-MOR-003/Bridge No. 4817	Privileged - Redacted	Unevaluated	East of Project
AK-MOR-004/Captain Sutton Stopping Place/Inn	Privileged - Redacted	Unevaluated	West of Project
AK-MOR-005/Hassman School	Privileged - Redacted	Unevaluated	West of Project
AK-SPN-001/Cyprien Cartie Farmstead	Privileged - Redacted	Unevaluated	North and West of Project
AK-WKB-001/Waukenabo School	Privileged - Redacted	Unevaluated	North and West of Project
AK-WKB-004/CCC Camp Buildings	Privileged - Redacted	Unevaluated	West of Project
AK-WKB-005/Waukenabo Township Hall	Privileged - Redacted	Unevaluated	West of Project
AK-WKB-007/Welsh Ranch	Privileged - Redacted	Unevaluated	East of Project
AK-WKB-008/log building	Privileged - Redacted	Unevaluated	West of Project
AK-WKB-009/Bridge No. 7383	Privileged - Redacted	Unevaluated	East of Project

These structures were inventoried during previous surveys. The integrity of these structures is not defined, and none of them have been evaluated for NRHP eligibility. None of these sites will be impacted by the Project.

Conclusions

Merjent recommends that there will be no adverse impact on known or suspected cultural resources as a result of this Project. The majority of the Project has been designed to parallel the existing US Highway 169 corridor, which has been previously surveyed and does not need to be re-investigated for this Project.

Given public and private development over the almost 30-year period since the 1986 survey, it is likely that additional structures would already have been identified. In addition, if these twelve or any other structures were truly significant, it is likely that previous public and private developers over the past 30 years would have been tasked with evaluating the potential adverse effects of their projects. Merjent recommends that no architectural review is appropriate for this Project.

Merjent recommends that if construction plans are altered to affect areas that were not previously surveyed or disturbed, these locations should be examined for cultural resources. Further, if human remains are encountered during construction activities, all ground disturbing activity must cease and local law enforcement must be notified per MN 307.08.

Please contact me at 612.924.3984 if you have questions.

Sincerely,
Merjent, Inc.



Dean T. Sather, MA, RPA
Sr. Cultural Resource Specialist

Figure 1 contains privileged information regarding locations of cultural resources and has been redacted.



Minnesota
Historical Society

STATE HISTORIC PRESERVATION OFFICE

Using the Power of History to Transform Lives
PRESERVING › SHARING › CONNECTING

May 28, 2015

Mr. Dan Leshner
Sr. Field Representative
Great River Energy
12300 Elm Creek Blvd.
Maple Grove, MN 55369-4718

RE: Great River Energy Pallsade 115 kV Transmission Project
T49 R26; T48 R26; T47 R26, Aitkin County
SHPO Number: 2015-1867

Dear Mr. Leshner:

Thank you for the opportunity to comment on the above project. It is being reviewed pursuant to the responsibilities given to the Minnesota Historical Society by the Minnesota Historic Sites Act and the Minnesota Field Archaeology Act.

Due to the nature and location of the proposed project, we recommend that a Phase I archaeological survey be completed. The survey must meet the requirements of the Secretary of the Interior's Standards for Identification and Evaluation, and should include an evaluation of National Register eligibility for any properties that are identified. For a list of consultants who have expressed an interest in undertaking such surveys, please visit the website preservationdirectory.mnhs.org, and select "Archaeologists" in the "Search by Specialties" box.

We will reconsider the need for survey if the project area can be documented as previously surveyed or disturbed. Any previous survey work must meet contemporary standards. **Note:** plowed areas and right-of-way are not automatically considered disturbed. Archaeological sites can remain intact beneath the plow zone and in undisturbed portions of the right-of-way.

Please note that this comment letter does not address the requirements of Section 106 of the National Historic Preservation Act of 1966 and 36CFR800, procedures of the Advisory Council on Historic Preservation for the protection of historic properties. If this project is considered for federal assistance, or requires a federal license or permit, it should be submitted to our office by the responsible federal agency.

If you have any questions regarding our review of this project, please contact Kelly Gragg-Johnson at (651) 259-3455.

Sincerely,

A handwritten signature in cursive script that reads "Sarah J. Beimers".

Sarah J. Beimers, Manager
Government Programs and Compliance

RECEIVED JUL 20 2015



Using the Power of History to Transform Lives
PRESERVING > SHARING > CONNECTING

STATE HISTORIC PRESERVATION OFFICE

July 15, 2015

Mr. Mark Strohfus
Environmental Projects Lead
Great River Energy
12300 Elm Creek Blvd.
Maple Grove, MN 55369-4718

RE: Palisade 115 kV Transmission Project
Cass County
SHPO Number: 2015-2304

Dear Mr. Strohfus:

Thank you for the opportunity to review and comment on the above project. It has been reviewed pursuant to the responsibilities given the Minnesota Historical Society by the Minnesota Historic Sites Act and the Minnesota Field Archaeology Act.

Based on our review of the project information, we conclude that there are **no properties** listed in the National or State Registers of Historic Places, and no known or suspected archaeological properties in the area that will be affected by this project.

Please note that this comment letter does not address the requirements of Section 106 of the National Historic Preservation Act of 1966 and 36CFR800, Procedures of the Advisory Council on Historic Preservation for the protection of historic properties. If this project is considered for federal assistance, or requires a federal permit or license, it should be submitted to our office by the responsible federal agency.

Please contact our Compliance Section at (651) 259-3455 if you have any questions regarding our review of this project.

Sincerely,

A handwritten signature in black ink that reads 'Sarah J. Beimers'.

Sarah J. Beimers, Manager
Government Programs and Compliance



12300 Elm Creek Blvd • Maple Grove, Minnesota 55369-4718 • 763-445-5000 • Fax 763-445-5050 • www.greatriverenergy.com

July 1, 2015

Mr. Robert Maroney
U.S. Army Corps of Engineers
Brainerd Regulatory Field Office
10867 E Gull Lake Drive
Brainerd, MN 56401

**RE: Proposed Palisade 115 kV Transmission Project - Aitkin County
PUC Docket No. 15-423**

Dear Mr. Maroney:

Great River Energy is currently gathering data to be used in preparation of a regulatory application necessary to obtain approval to construct the proposed Palisade 115 kilovolt (kV) Transmission Project in Aitkin County (see enclosed fact sheet and map). Great River Energy intends to seek a Route Permit for the Project from the Minnesota Public Utilities Commission (PUC). The proposed Project is needed to provide power to a new petroleum pump station (Palisade Pump Station) being proposed by Enbridge Energy.

The Project will include approximately 13 miles of 115 kV transmission line (see fact sheet map). The new line will begin near 390th Street and U.S. Hwy 169 at a new breaker station connected to the existing Minnesota Power 115 kV transmission line. The line will generally follow adjacent to Hwy 169 approximately 13 miles north to the new pump station near 510th Land and Hwy 169. In most cases, round wood transmission structures will be used that will range in height from 70 to 80 feet above ground.

Great River Energy is requesting information on the possible effects of the proposed project on floodplains, wetlands, and other important natural resources that occur in the project area. The transmission line will cross the Mississippi River, a Section 10 water. It will not cross any DNR public waters, but it will cross a number of NWI wetlands (see enclosed map). Great River Energy will work with the Corps and Aitkin County to address impacts once design details are available.

Merjent conducted a Phase 1A Cultural Resources Assessment of the proposed Project area (see enclosed letter). Merjent reported a single recorded archaeological site, which is external to the proposed route and would not be impacted by the project. Twelve previously recorded historic structures were identified in the Project area, but Merjent determined that they would not be impacted by the project and recommends against architectural review.

Ms. Maroney
July 1, 2015
Page 2

We would appreciate receiving any written comments from your office by Monday, July 13, 2015. If you have any questions about this proposed project, please contact me at (763) 445-5210 or MStrohfus@GREnergy.com.

Thank you for your attention to this important project.

Sincerely,
GREAT RIVER ENERGY

A handwritten signature in black ink that reads "Mark Strohfus". The signature is written in a cursive style with a large initial "M" and a long, sweeping underline.

Mark Strohfus
Environmental Projects Lead

Enclosures: Fact Sheet/Project Map; Hydrologic Features Map; Merjent May 15, 2015 Letter

S:\Legal\Environmental\Transmission\Projects\Palisade\Agencies\Corps\USACE ltr Palisade.docx

Palisade 115 kV Transmission Project



GREAT RIVER ENERGY
 12300 Elm Creek Blvd
 Maple Grove, MN 55369-4718
 1-888-521-0130
www.greatriverenergy.com



Mille Lacs Energy Cooperative

MILLE LACS ENERGY COOPERATIVE
 PO Box 230
 Aitkin, MN 56431
 1-800-450-2191
www.mlecmn.net

Project Need

Great River Energy, wholesale electric supplier to Mille Lacs Energy Cooperative and 27 other electric cooperatives, proposes to construct a new overhead 115 kilovolt (kV) transmission line and breaker station that is needed to provide electric power to a new petroleum pump station being proposed by Enbridge Energy (Enbridge). The Enbridge pump station is part of a pipeline replacement project that will require permits from the Minnesota Public Utilities Commission before it can be constructed.

Proposed Project

Two route options are proposed for the transmission line to provide alternatives for crossing the Mississippi River (see map on back).

East option

Under the East option the 13-mile transmission line would originate at a new breaker station proposed near the intersection of 390th Street and U.S. Highway 169. From there the route will follow Hwy 169 north for 13 miles, crossing the Mississippi River adjacent to Hwy 169 and terminating at the pump station location on the east side of Hwy 169 at 510th Lane.

West option

Under the West option the 13.5-mile transmission line would follow Hwy 169 from the proposed breaker station location and turn west on 430th Street. The route would continue for one-half mile to the termination of 430th Street. From here the route would follow a property line northwest across the Mississippi River to County Road 21. The route would follow County Road 21 for 1.2 miles back to Hwy 169 and north to the pump station location.

The proposed transmission line will consist of wood poles that are 350 to 400 feet apart and 70 to 80 feet above ground. Guy wires and anchors, when necessary, will be used to stabilize poles. Some specialty poles may also be required. The new transmission line will require a 100-foot-wide right of way, 50 feet on each side of the centerline. The opportunity to share road right of way along Hwy 169 will minimize easement requirements. Trees and vegetation in the right of way will be removed to provide a safe construction, operation and maintenance area.

Permitting

Great River Energy will submit a route permit application for the proposed Project to the Minnesota Public Utilities Commission (MPUC). During the route permit process, the public and regulatory agencies will have numerous opportunities to provide input on the proposed Project, including public meetings facilitated by the MPUC and Department of Commerce Energy Environmental Review and Analysis (DOC EERA) staff. The DOC EERA will prepare an Environmental Assessment (EA) for the Project. Construction cannot begin until an approved route permit is granted by the MPUC.

Easements/Trees

Once the Project has been approved, Great River Energy will contact landowners to present an easement and offer of compensation. At that time, information will be shared on tree removal, construction access and practices, and restoration of the right of way.

Project Schedule

Public contacts and/or notifications -----	2 nd quarter 2015
Project permitting -----	Summer 2015 to spring 2016
Survey/design -----	1 st quarter 2016
Easement acquisition/right-of-way permits -----	Summer/fall 2016
Transmission line construction -----	Starts 2 nd quarter 2017
Energyization -----	Winter 2017/2018



Typical Transmission Breaker Station



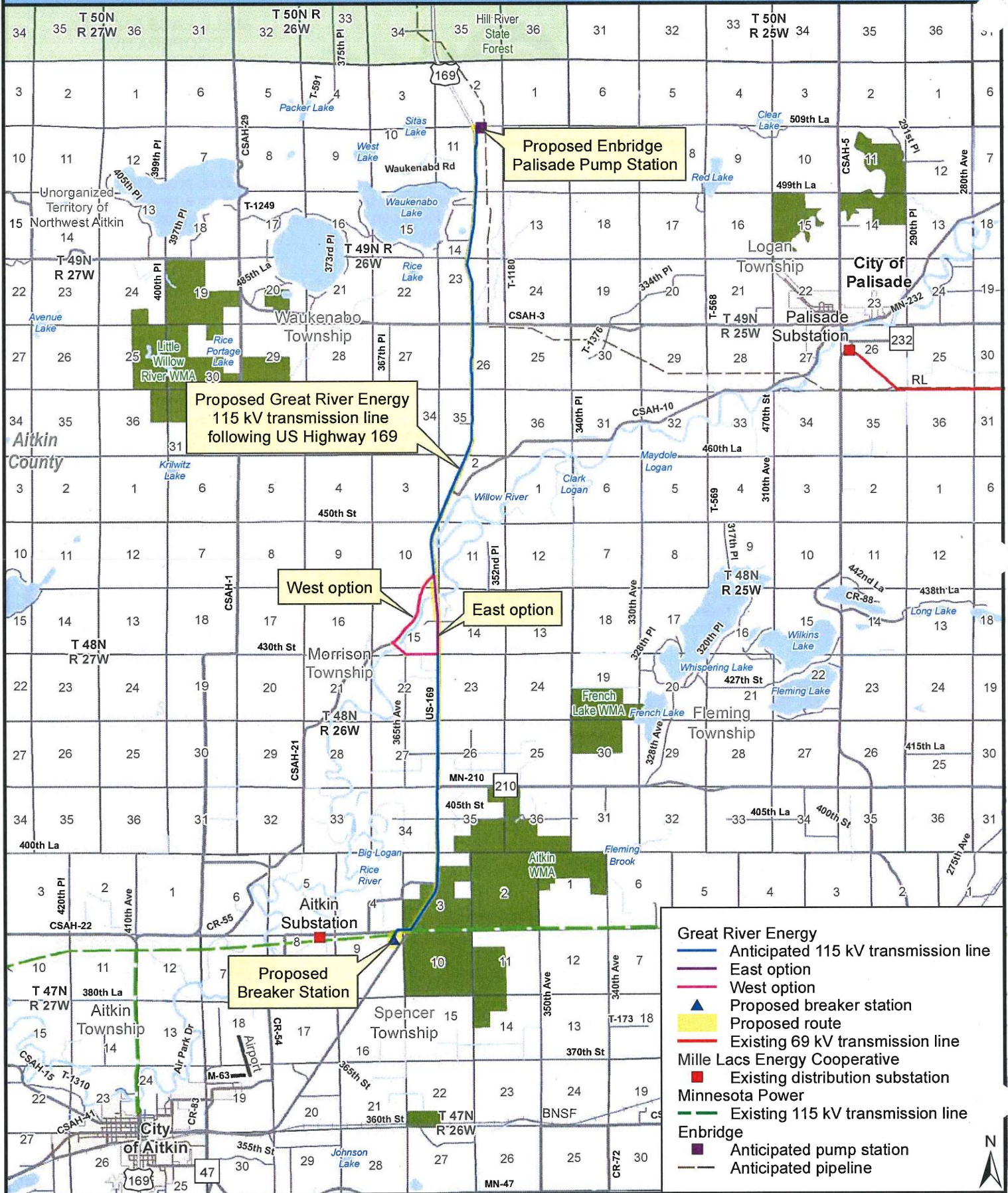
Typical 115 kV Wood Transmission Structure

For project updates and information, visit greatriverenergy.com/palisade or contact:

Dan Leshar
 Sr. Field Representative
 Great River Energy – Transmission Land Rights
 (763) 445-5975 or (612) 817-9910
dlesher@grenergy.com

Mark Strohfus
 Environmental Project Lead
 Great River Energy
 (763) 445-5210
mstrohfus@grenergy.com

Proposed Project



Proposed Great River Energy 115 kV transmission line following US Highway 169

Proposed Enbridge Palisade Pump Station

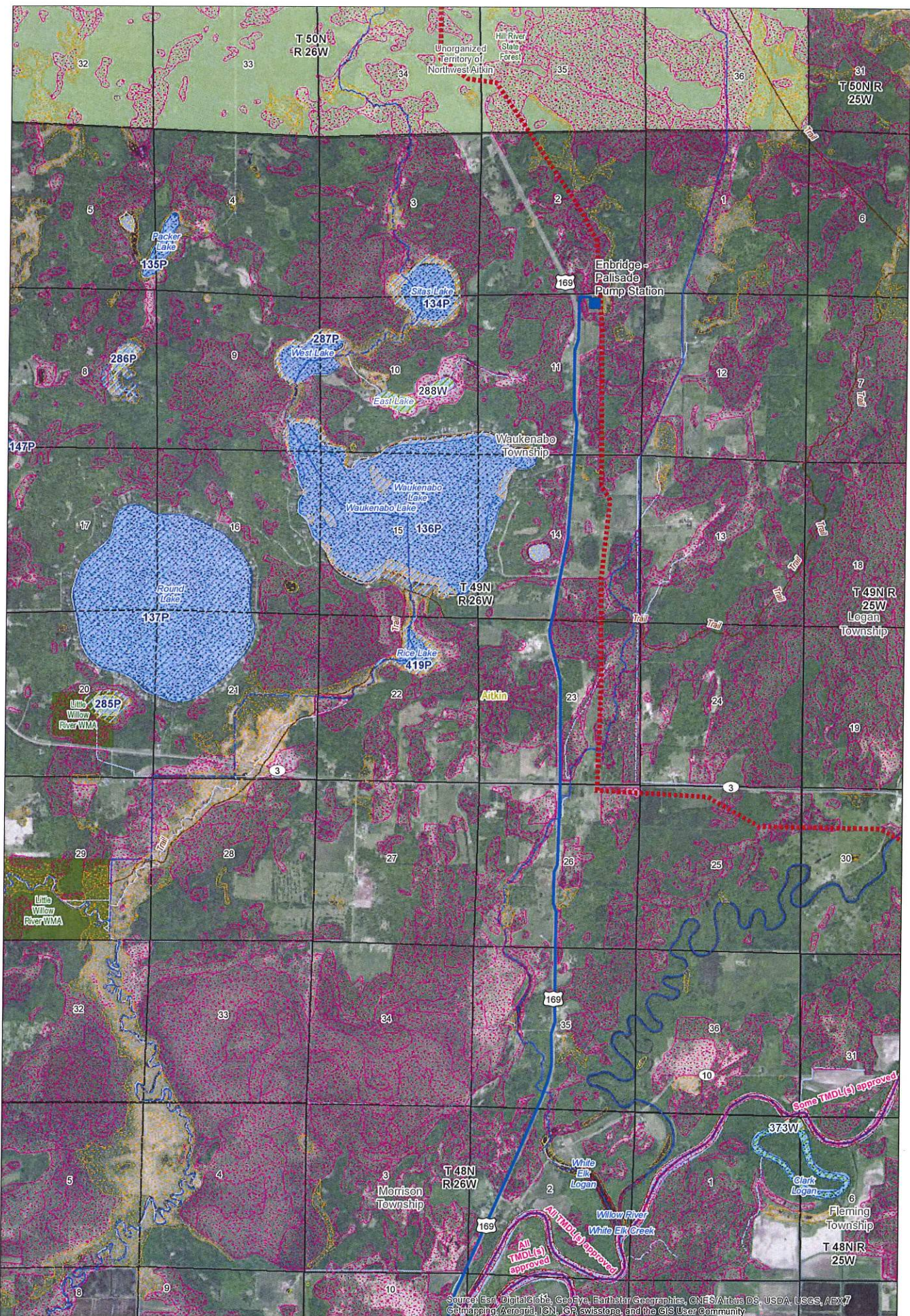
West option

East option


Proposed Breaker Station

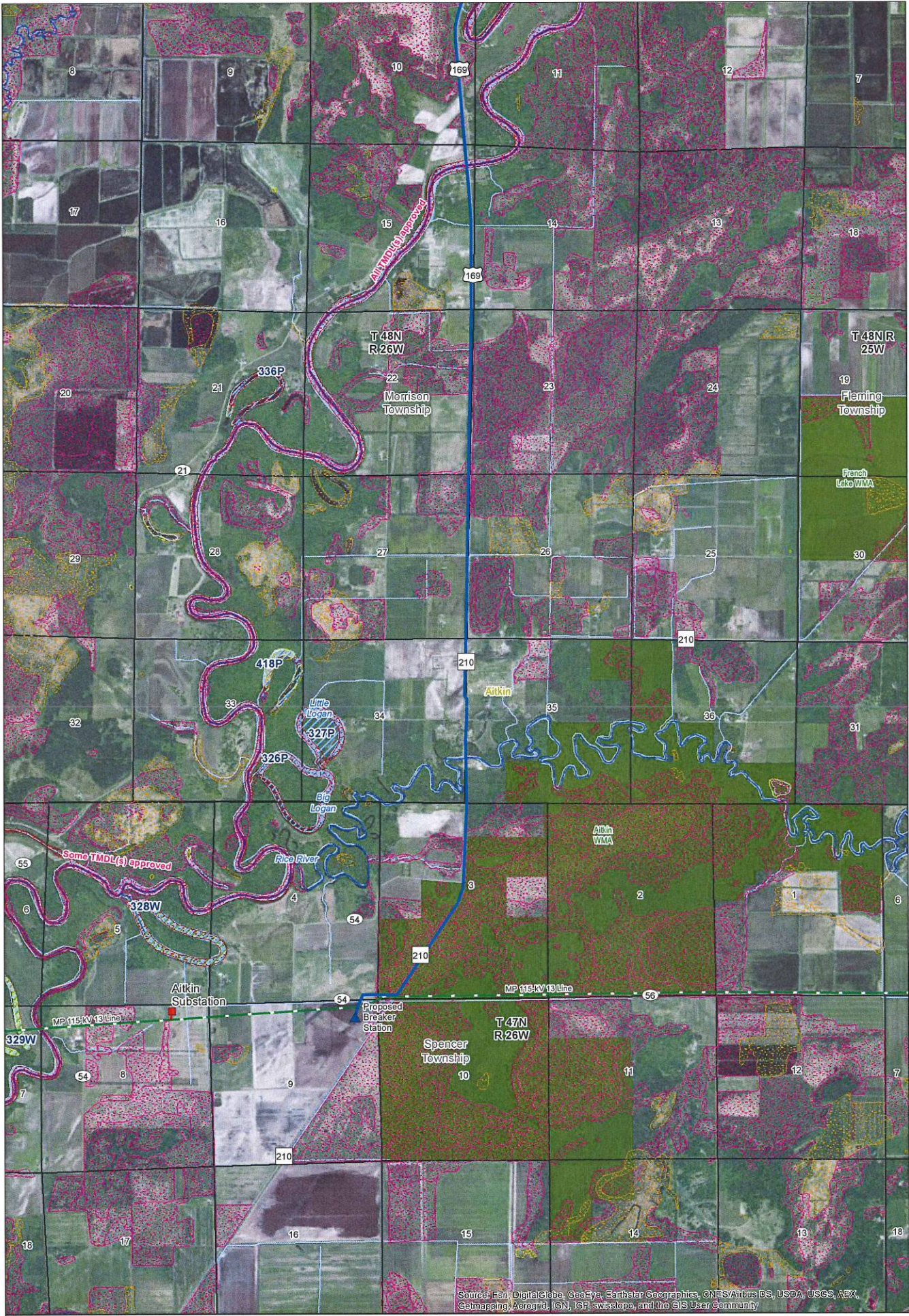
- Great River Energy**
- Anticipated 115 kV transmission line
 - East option
 - West option
 - ▲ Proposed breaker station
 - ▭ Proposed route
 - Existing 69 kV transmission line
- Mille Lacs Energy Cooperative**
- Existing distribution substation
- Minnesota Power**
- Existing 115 kV transmission line
- Enbridge**
- Anticipated pump station
 - Anticipated pipeline





Source: Esri, DigitalGlobe, GeoEye, Earthstar Geographics, CNES/Airbus DS, USDA, USGS, AeroX,7
 Getmapping, Aergrid, IGN, IGA, swisstopo, and the GIS User Community

<p>Great River Energy</p> <p>Proposed 115 kV Transmission Line</p> <p>Enbridge</p> <p>Proposed Pump Station</p> <p>Proposed Pipeline</p>	<p>NWI Wetlands</p> <p>Freshwater Emergent Wetland</p> <p>Freshwater Forested/</p> <p>Freshwater Pond</p> <p>Lake</p> <p>Riverine</p>	<p>MN Public Waters Inventory (PWI)</p> <p>Public Water Wetland</p> <p>Public Water Basin</p> <p>MN Public Watercourse</p> <p>MN MPCA Impaired Streams</p>	<p>Data Sources vary between MNDOT, MNDNR, MNGEO and Great River Energy</p> <p>Aerial Imagery from: ESRI World Imagery, Basemap service</p> <p>Map Projection: UTM, NAD83, Zone 15, Meters</p>	 <p>GREAT RIVER ENERGY</p>	<p>Palisade Transmission Project</p> <p>North Map</p> <p>NWI Wetlands and Hydrologic Features</p> <p>Updated: 6/8/2015</p>
--	---	--	--	--	---



Sources: Esri, DigitalGlobe, GeoEye, Earthstar Geographics, CNES/Airbus DS, USDA, USGS, AEX, Getmapping, Aerogrid, IGN, IGP, swisstopo, and the GIS User Community

- | | | |
|-----------------------------------|-----------------------------------|----------------------------------|
| Great River Energy | Minnesota Power (MP) | Riverine |
| Proposed 115 kV Transmission Line | Existing 115 kV Transmission Line | MN Public Waters Inventory (PWI) |
| Proposed Breaker Station | NWI Wetlands | Public Water Wetland |
| Existing 115 kV Transmission Line | Freshwater Emergent Wetland | Public Water Basin |
| Great River Energy Cooperative | Freshwater Forested/ | MN Public Watercourse |
| Existing Distribution Substation | Freshwater Pond | MN MPCA Impaired Streams |

Data Sources vary between MNDOT, MNDNR, MNGEO and Great River Energy
 Aerial Imagery from: ESRI World Imagery
 Base map service: Map Projection:
 UTM, NAD83, Zone15, Meters



Palisade Transmission Project
South Map
NWI Wetlands and Hydrologic Features
 Updated: 6/8/2015



REPLY TO ATTENTION OF
REGULATORY BRANCH

DEPARTMENT OF THE ARMY
ST. PAUL DISTRICT, CORPS OF ENGINEERS
180 FIFTH STREET EAST, SUITE 700
ST. PAUL, MN 55101-1678

August 24, 2015

Regulatory File No. 2015-03010-BRC

Mark Strohfus
Great River Energy
12300 Elm Creek Blvd
Maple Grove, Minnesota 55369

Dear Mr. Strohfus:

We have received information about the proposed Palisade 115kV Transmission Project. Due to limited staff and resources, it is unlikely that U.S. Army Corps of Engineers Regulatory staff will review or comment on this document until we receive a jurisdictional determination request, a request for a pre-application consultation meeting, and/or a permit application. In lieu of a specific response, please consider the following general information concerning our regulatory program that may apply to the proposed project.

If the proposal involves activity in navigable waters of the United States, it may be subject to the Corps of Engineers' jurisdiction under Section 10 of the Rivers and Harbors Act of 1899 (Section 10). Section 10 prohibits the construction, excavation, or deposition of materials in, over, or under navigable waters of the United States, or any work that would affect the course, location, condition, or capacity of those waters, unless the work has been authorized by a Department of the Army permit.

If the proposal involves discharge of dredged or fill material into waters of the United States, it may be subject to the Corps of Engineers' jurisdiction under Section 404 of the Clean Water Act (CWA Section 404). Waters of the United States include navigable waters, their tributaries, and adjacent wetlands (33 CFR § 328.3). CWA Section 301(a) prohibits discharges of dredged or fill material into waters of the United States, unless the work has been authorized by a Department of the Army permit under Section 404. Information about the Corps permitting process can be obtained online at <http://www.mvp.usace.army.mil/regulatory>.

The Corps' evaluation of a Section 10 and/or a Section 404 permit application involves multiple analyses, including (1) evaluating the proposal's impacts in accordance with the National Environmental Policy Act (NEPA) (33 CFR part 325), (2) determining whether the proposal is contrary to the public interest (33 CFR § 320.4), and (3) in the case of a Section 404 permit, determining whether the proposal complies with the Section 404(b)(1) Guidelines (Guidelines) (40 CFR part 230).

If the proposal requires a Section 404 permit application, the Guidelines specifically require that "no discharge of dredged or fill material shall be permitted if there is a practicable alternative to the proposed discharge which would have less adverse impact on the aquatic ecosystem, so long as the alternative does not have other significant adverse environmental consequences" (40 CFR § 230.10(a)). Time and money spent on the proposal prior to applying for a Section 404 permit cannot be factored into the Corps' decision whether there is a less damaging practicable alternative to the proposal.

Regulatory Branch (File No. 2015-03010-BRC)

If an application for a Corps permit has not yet been submitted, the project proposer may request a pre-application consultation meeting with the Corps to obtain information regarding the data, studies or other information that will be necessary for the permit evaluation process. A pre-application consultation meeting is strongly recommended if the proposal has substantial impacts to waters of the United States, or if it is a large or controversial project.

For further information or to request a pre-application consultation meeting, please contact Rob Maroney at (651) 290-5766, the Corps' project manager for the County in which this proposal is located.

Sincerely,

A handwritten signature in cursive script that reads "Benjamin R. Cox".

Benjamin R. Cox
Chief, Northwest Section

Strohfus, Mark GRE-MG

From: Strohfus, Mark GRE-MG
Sent: Tuesday, June 09, 2015 3:15 PM
To: 'Horton, Andrew'
Subject: Palisade 115 kV Project - Request for Review
Attachments: USFWS ltr - Palisade.pdf; Palisade fact sheet_20150608.pdf;
Palisade_RareFeatureMap11x17_20150608.pdf

Mr. Horton:

Great River Energy request FWS review for our proposed Palisade 115 kV Project in Cass County, Mn. We respectfully request your review and response by Monday, July 13, 2015.

Attached are:

- Letter requesting FWS review
- Project Fact Sheet
- DNR NHIS Rare Features Map

If you have any questions about the project or our request for review, please contact me.

Sincerely,

Mark Strohfus

Environmental Project Lead

Great River Energy

12300 Elm Creek Boulevard

Maple Grove, MN 55369-4718

Tel: 763-445-5210 | Cell: 612-961-9820

MStrohfus@GREnergy.com

