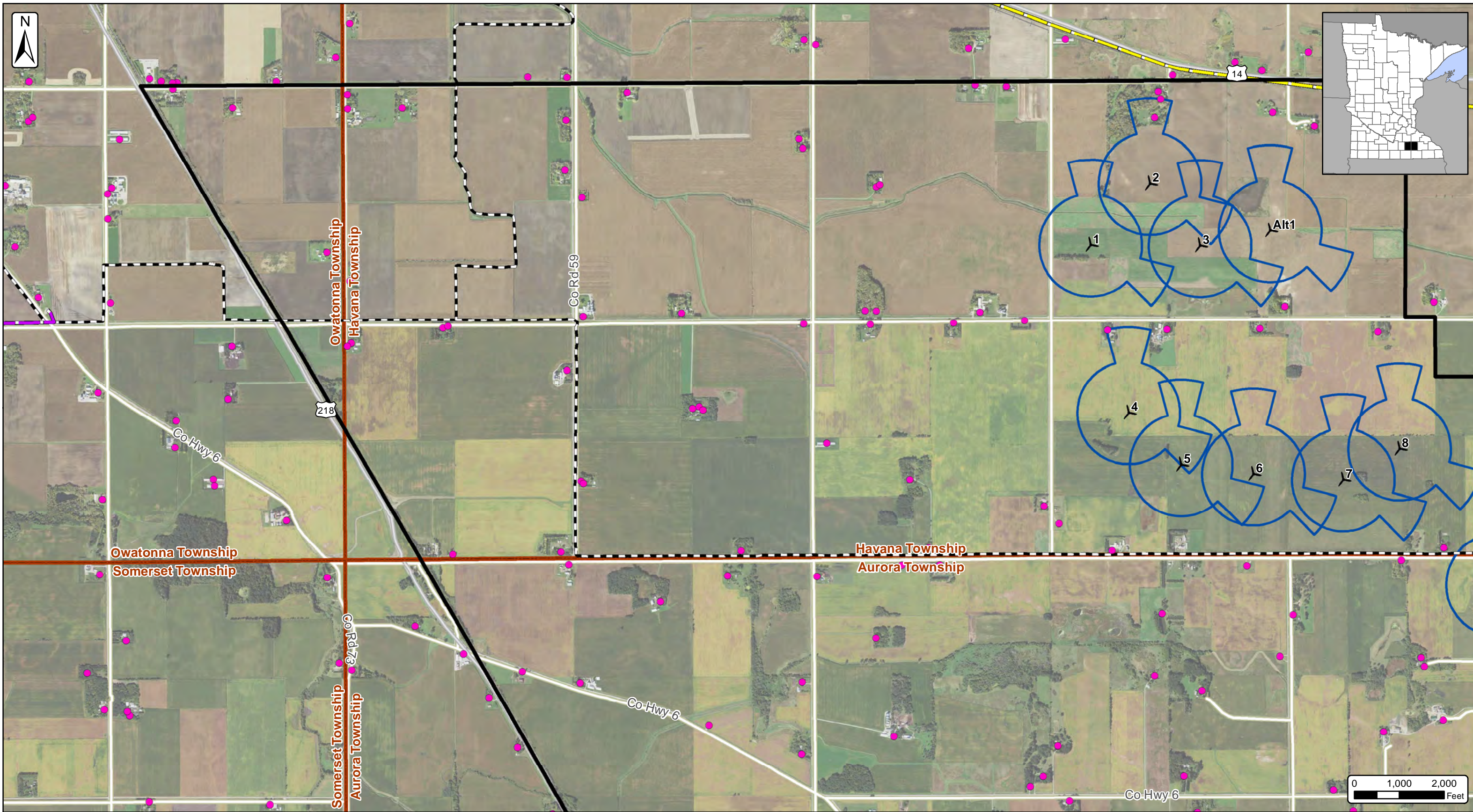


Dodge County Wind, LLC
Map 3 - Turbine Layout and Constraints Map
 Dodge County & Steele County, Minnesota
 Date: 12/10/2018

● Sensitive Receptors	Existing Transmission Lines (Velocity Suite)	✈ Turbine Layout (11/16/2018)	City/Village
— Snowmobile Trails (MNDNR)	4 kV Line	Project Area 03/13/2018 (±52,085 Ac.)	Townships
○ 3x5 Wind Buffer	41 kV Line	Mapbook Pages	Counties
	69 kV Line		
	161 kV Line		

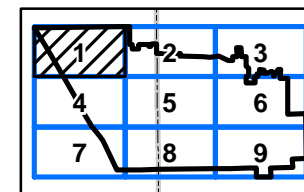


SOURCE: USDA NAIP IMAGERY 2017



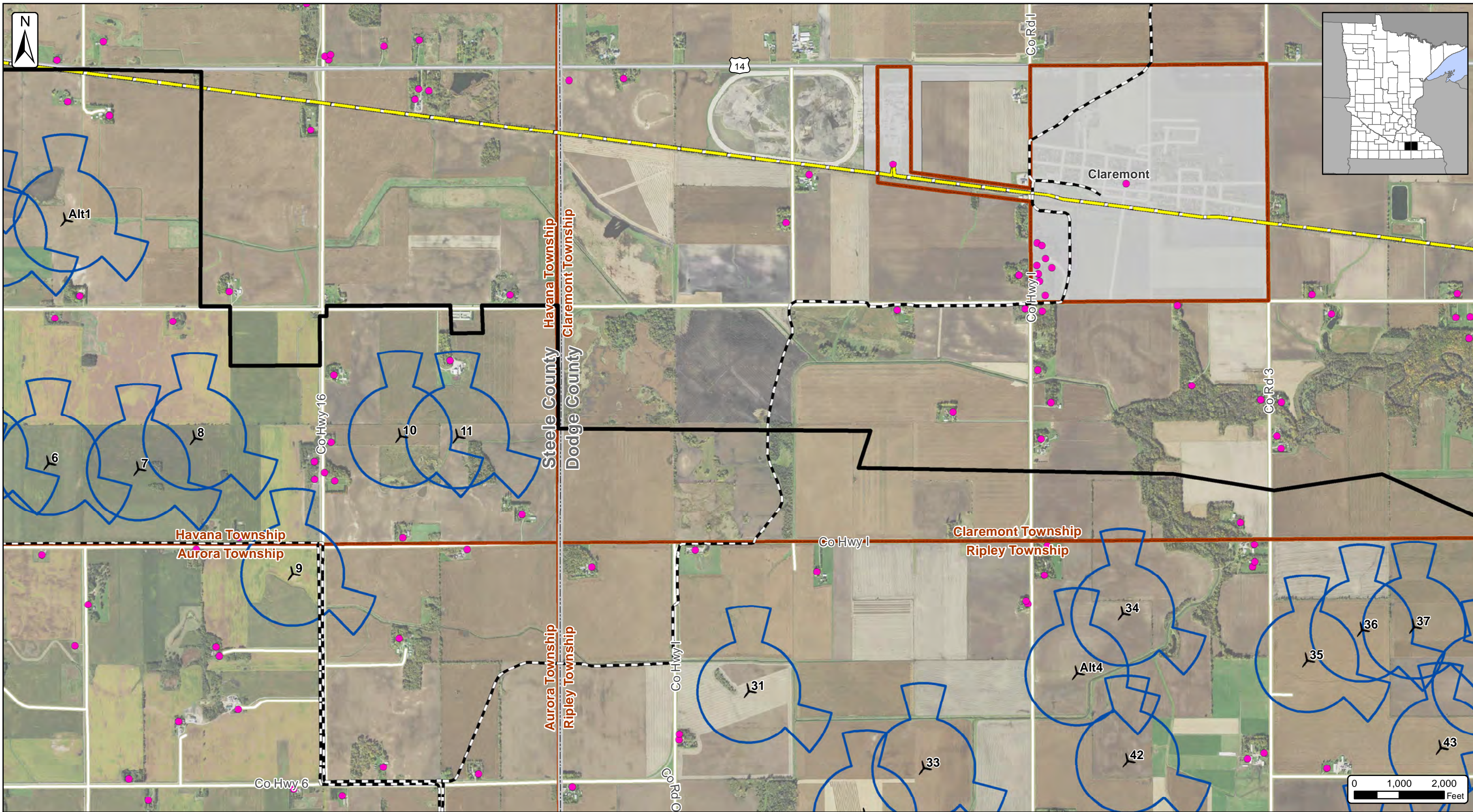
Dodge County Wind, LLC
Map 3 - Turbine Layout and Constraints Map - Page 1 of 9
 Dodge County & Steele County, Minnesota
 Date: 12/10/2018

- Sensitive Receptors
- Snowmobile Trails (MNDNR)
- 3x5 Wind Buffer
- Existing Transmission Lines (Velocity Suite) 69 kV Line
- Existing Transmission Lines (Velocity Suite) 161 kV Line
- Turbine Layout (11/16/2018)
- Project Area 03/13/2018 (±52,085 Ac.)
- City/Village
- Townships
- Counties



SOURCE: USDA NAIP IMAGERY 2017





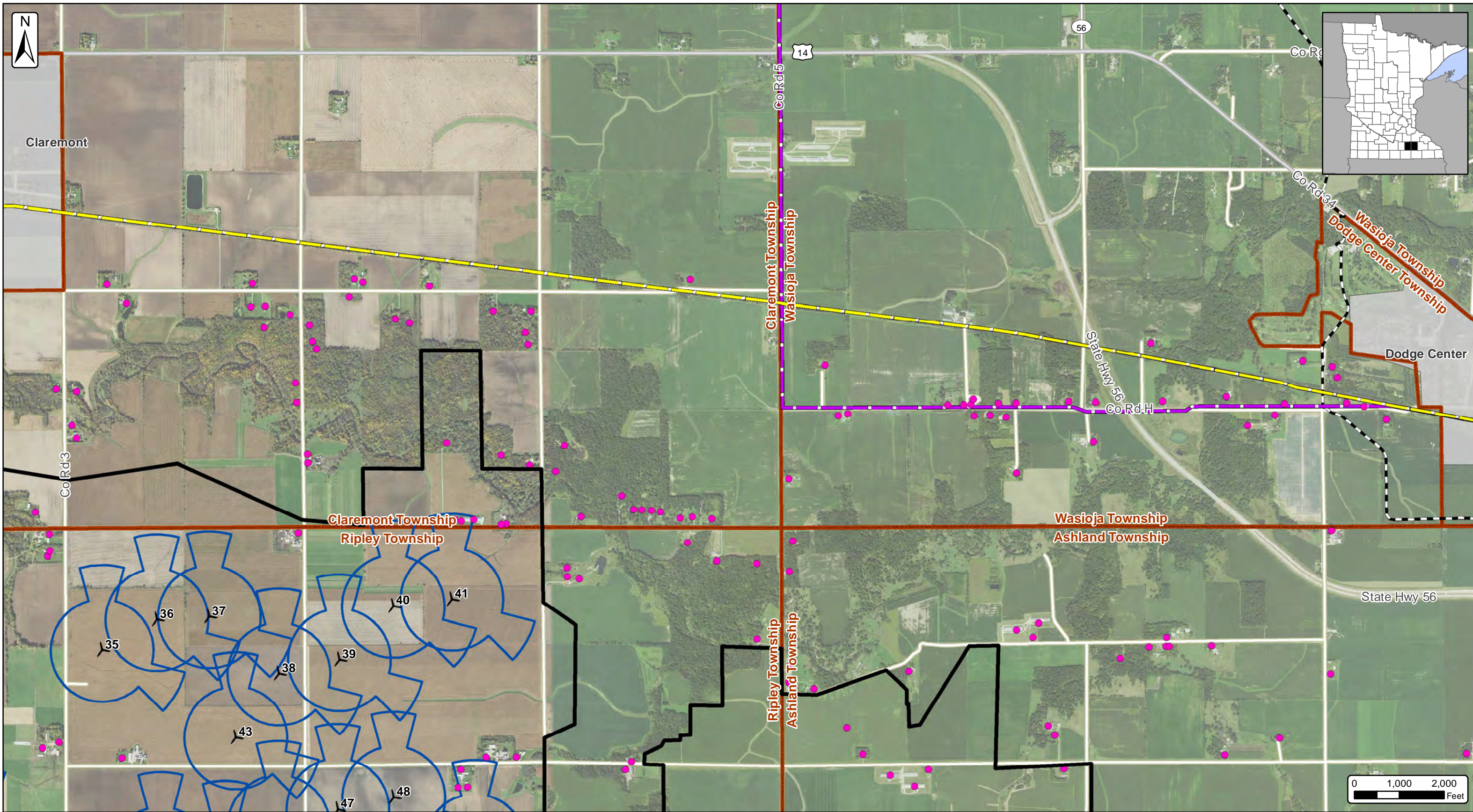
Dodge County Wind, LLC
Map 3 - Turbine Layout and Constraints Map - Page 2 of 9
 Dodge County & Steele County, Minnesota
 Date: 12/10/2018

● Sensitive Receptors	Existing Transmission Lines (Velocity Suite)	⚡ Turbine Layout (11/16/2018)
--- Snowmobile Trails (MNDNR)	69 kV Line	▭ Project Area 03/13/2018 (±52,085 Ac.)
○ 3x5 Wind Buffer	161 kV Line	▭ City/Village
		▭ Townships
		▭ Counties

1	2	3
4	5	6
7	8	9

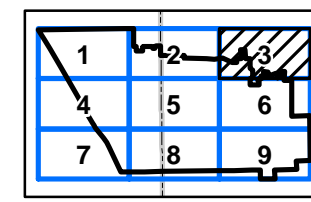
SOURCE: USDA NAIP IMAGERY 2017





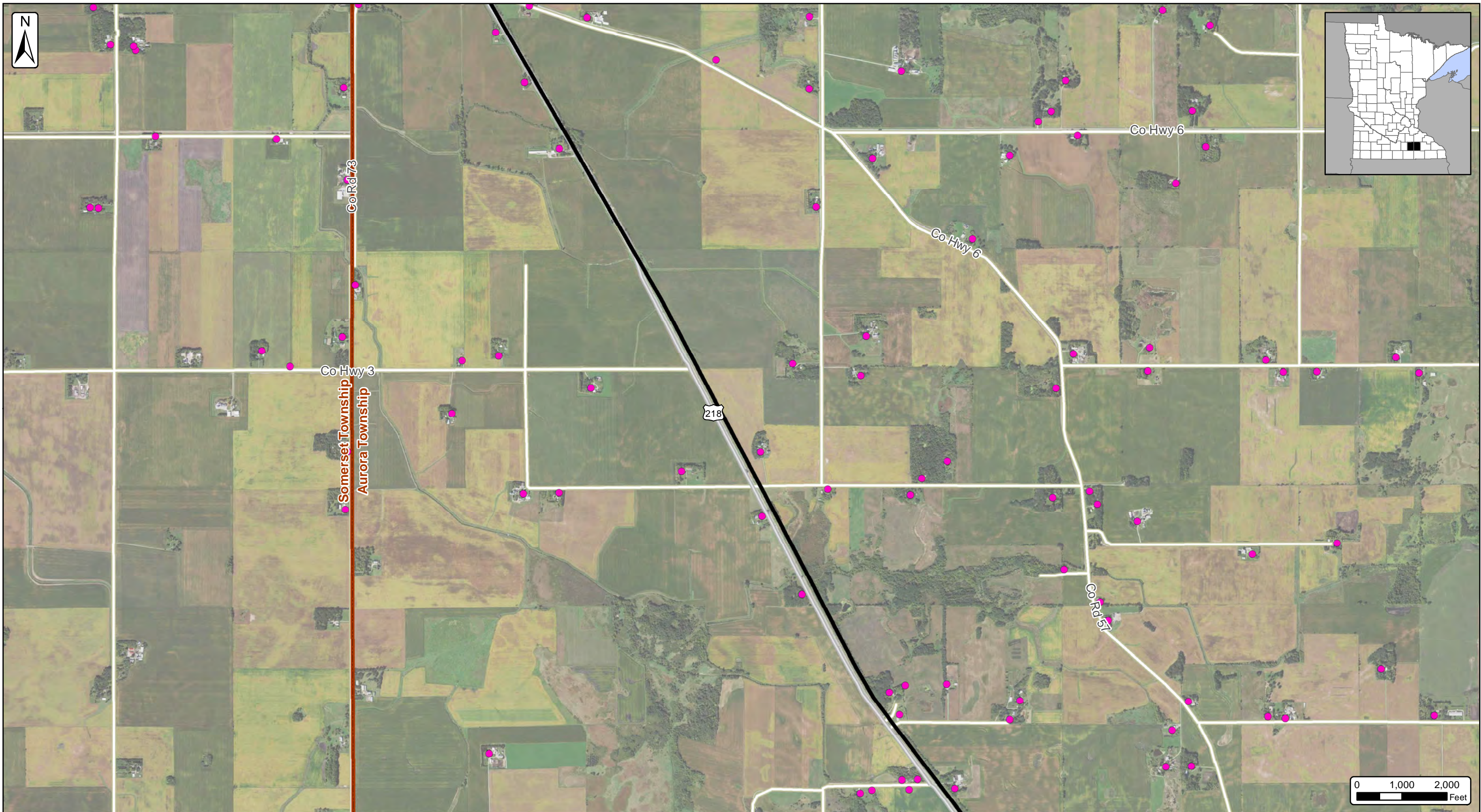
Dodge County Wind, LLC
Map 3 - Turbine Layout and Constraints Map - Page 3 of 9
 Dodge County & Steele County, Minnesota
 Date: 12/10/2018

- Sensitive Receptors
- Existing Transmission Lines (Velocity Suite)
- - - Snowmobile Trails (MNDNR)
- 3x5 Wind Buffer
- 69 kV Line
- 161 kV Line
- ⚓ Turbine Layout (11/16/2018)
- Project Area 03/13/2018 (±52,085 Ac.)
- City/Village
- Townships
- Counties



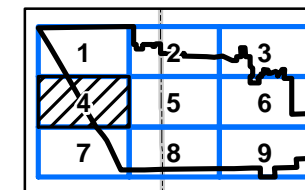
SOURCE: USDA NAIP IMAGERY 2017





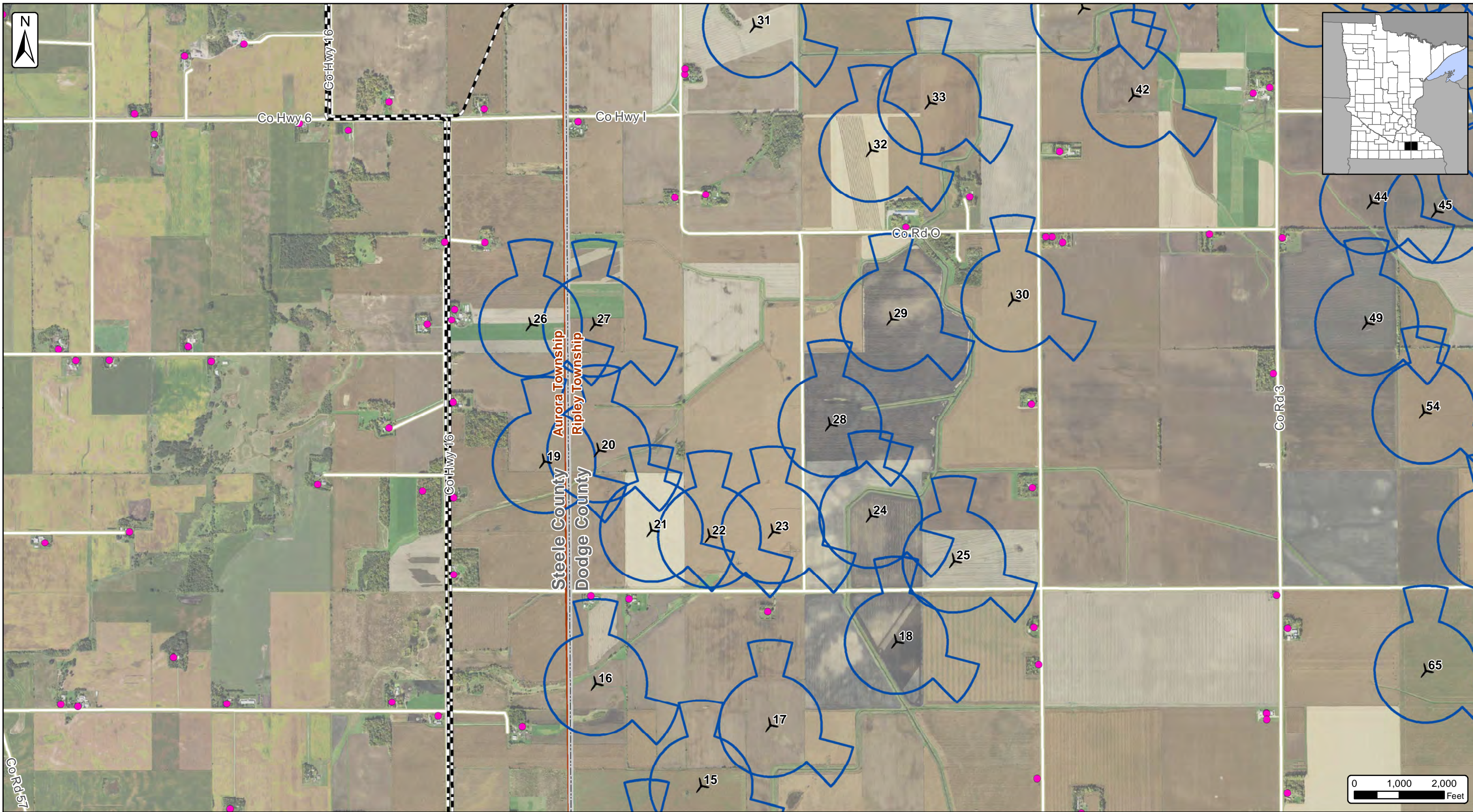
Dodge County Wind, LLC
Map 3 - Turbine Layout and
Constraints Map - Page 4 of 9
 Dodge County & Steele County, Minnesota
 Date: 12/10/2018

- Sensitive Receptors
- Snowmobile Trails (MNDNR)
- 3x5 Wind Buffer
- Existing Transmission Lines (Velocity Suite) 69 kV Line
- 161 kV Line
- Turbine Layout (11/16/2018)
- Project Area 03/13/2018 (±52,085 Ac.)
- City/Village
- Townships
- Counties



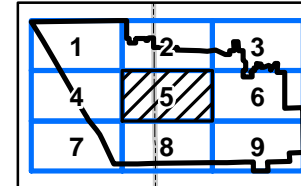
SOURCE: USDA NAIP IMAGERY 2017



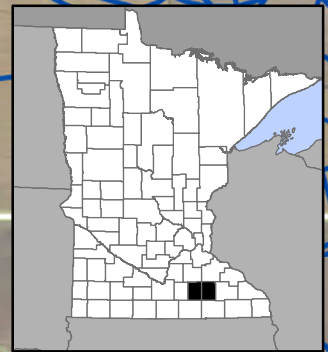
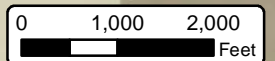


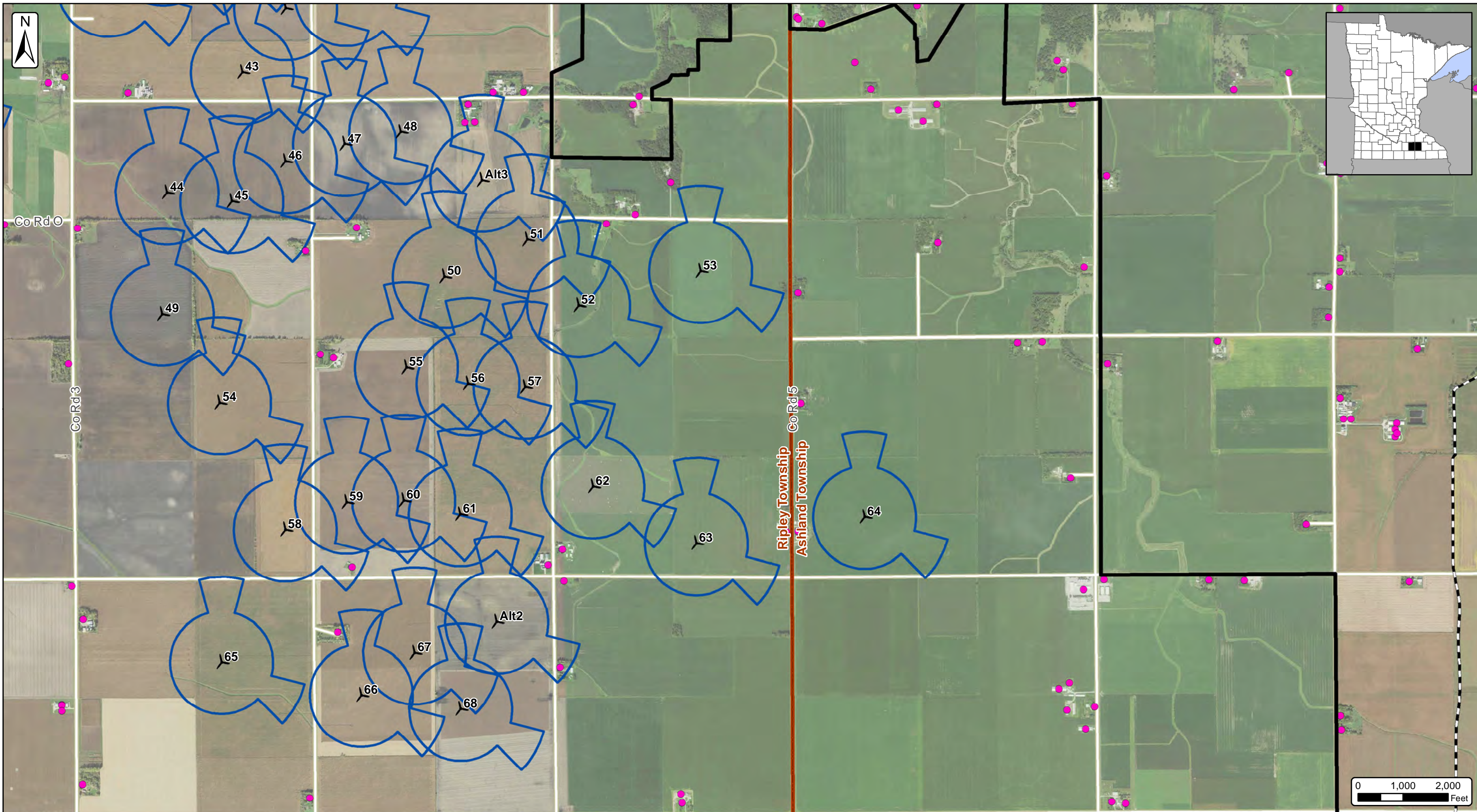
Dodge County Wind, LLC
Map 3 - Turbine Layout and Constraints Map - Page 5 of 9
 Dodge County & Steele County, Minnesota
 Date: 12/10/2018

- Sensitive Receptors
- Snowmobile Trails (MNDNR)
- 3x5 Wind Buffer
- Existing Transmission Lines (Velocity Suite) 69 kV Line
- Existing Transmission Lines (Velocity Suite) 161 kV Line
- Turbine Layout (11/16/2018)
- Project Area 03/13/2018 (±52,085 Ac.)
- City/Village
- Townships
- Counties



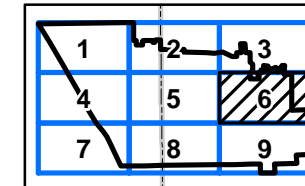
SOURCE: USDA NAIP IMAGERY 2017





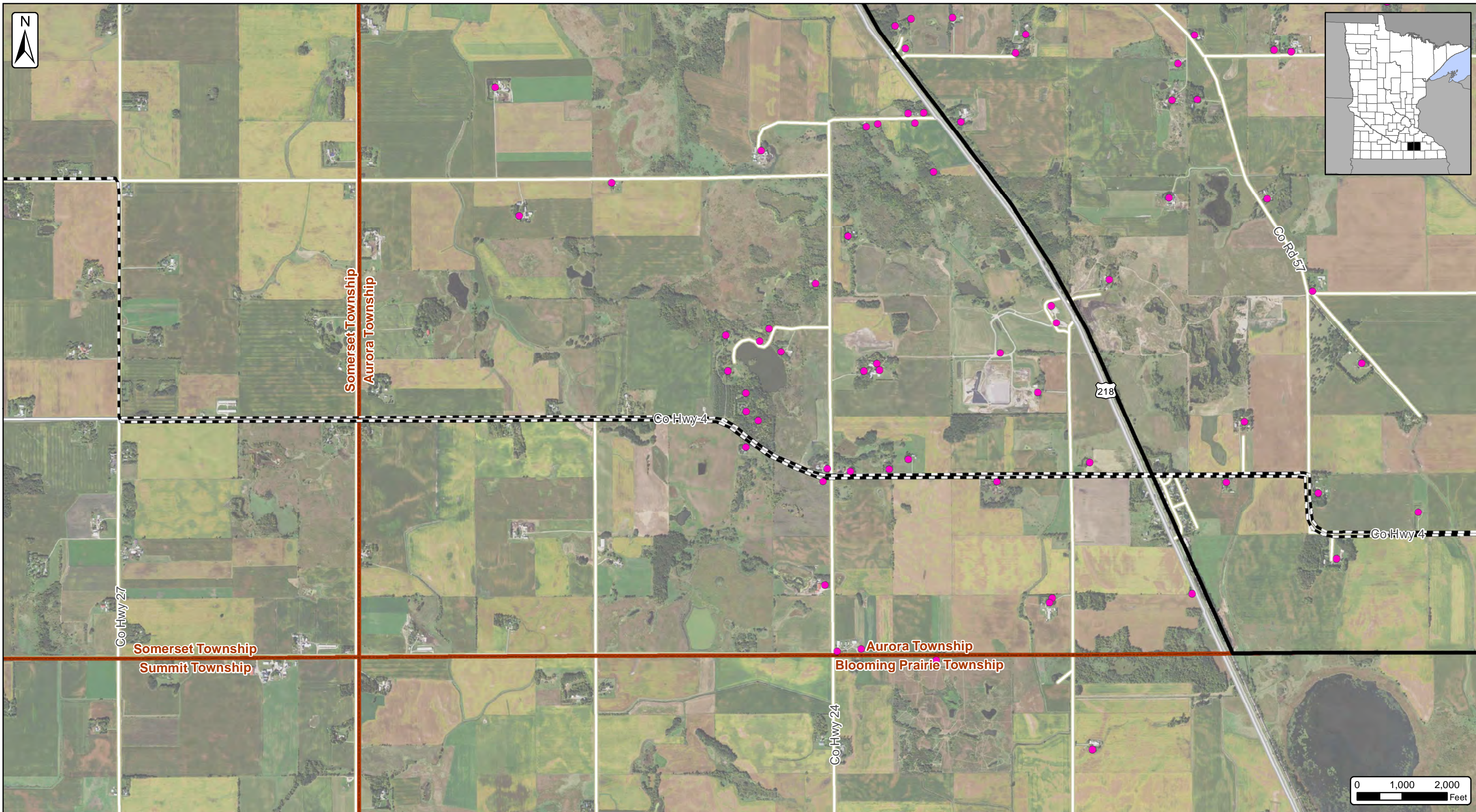
Dodge County Wind, LLC
Map 3 - Turbine Layout and Constraints Map - Page 6 of 9
 Dodge County & Steele County, Minnesota
 Date: 12/10/2018

- Sensitive Receptors
- Snowmobile Trails (MNDNR)
- 3x5 Wind Buffer
- Existing Transmission Lines (Velocity Suite) 69 kV Line
- Existing Transmission Lines (Velocity Suite) 161 kV Line
- Turbine Layout (11/16/2018)
- Project Area 03/13/2018 (±52,085 Ac.)
- City/Village
- Townships
- Counties



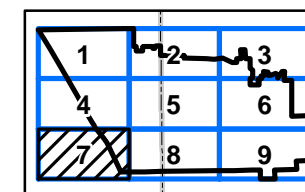
SOURCE: USDA NAIP IMAGERY 2017





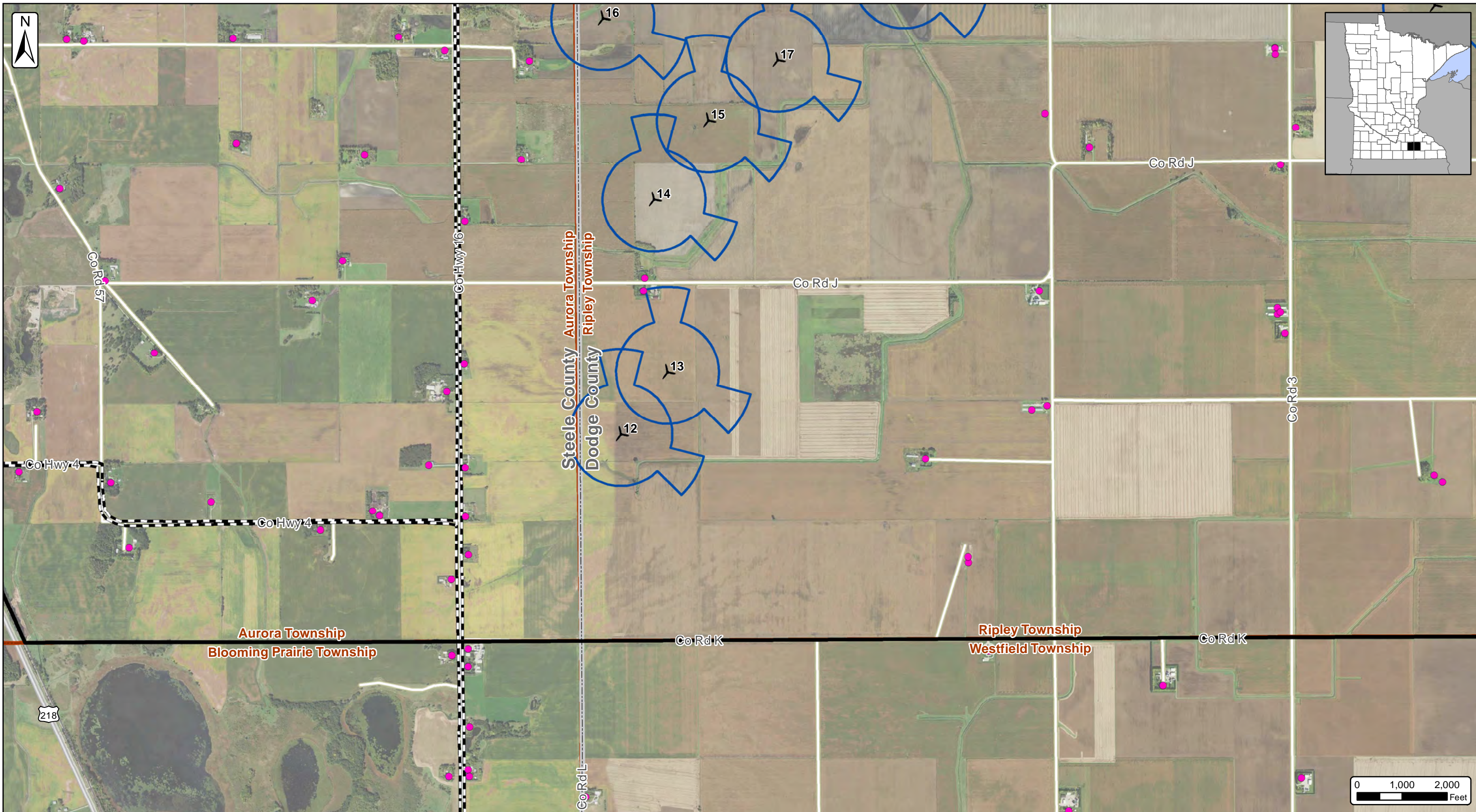
Dodge County Wind, LLC
Map 3 - Turbine Layout and Constraints Map - Page 7 of 9
 Dodge County & Steele County, Minnesota
 Date: 12/10/2018

- Sensitive Receptors
- Existing Transmission Lines (Velocity Suite)
 - 69 kV Line
 - 161 kV Line
- Snowmobile Trails (MNDNR)
- 3x5 Wind Buffer
- ✈ Turbine Layout (11/16/2018)
- Project Area 03/13/2018 (±52,085 Ac.)
- City/Village
- Townships
- Counties



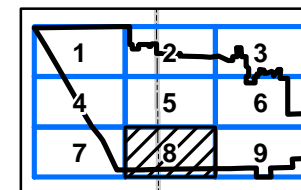
SOURCE: USDA NAIP IMAGERY 2017





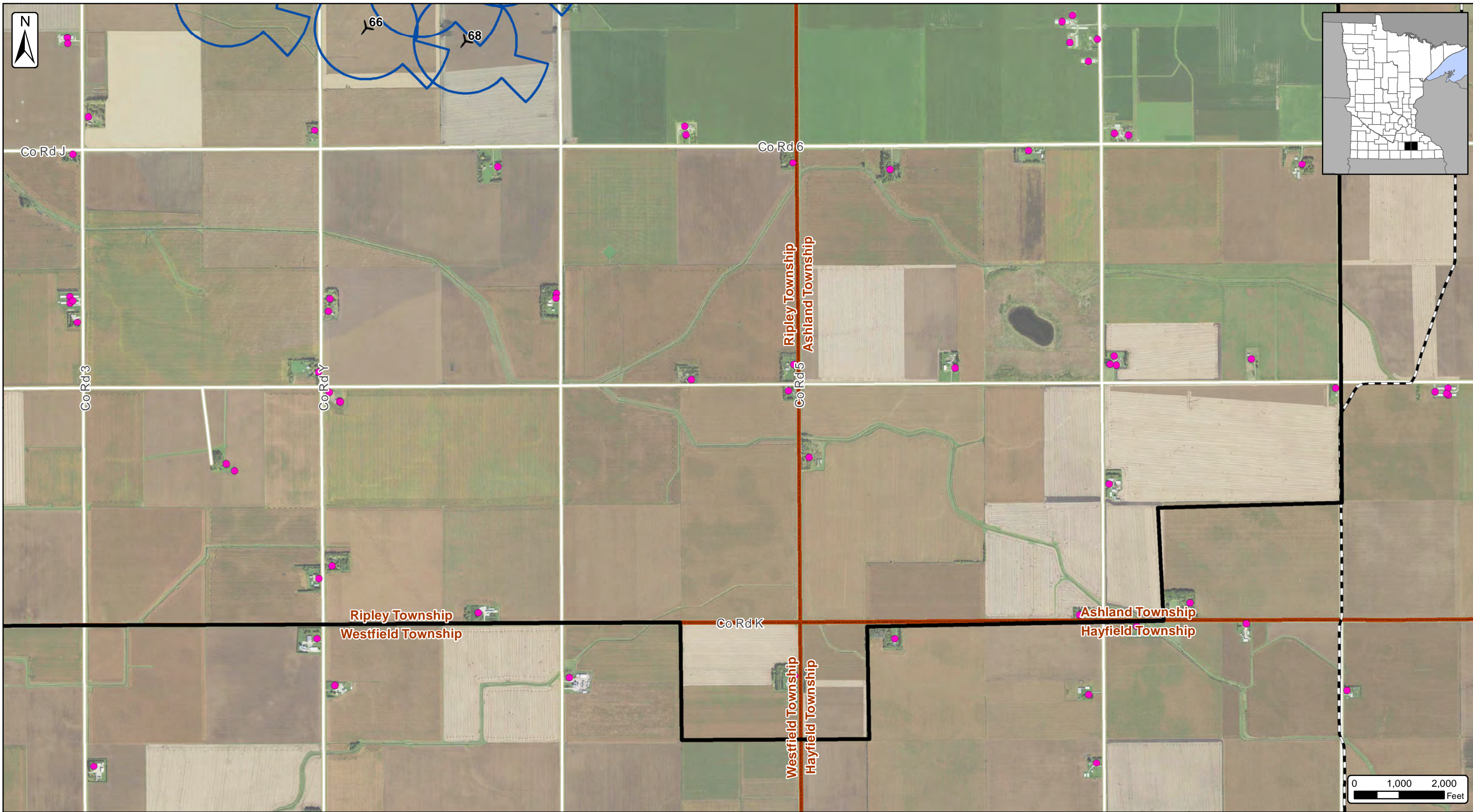
Dodge County Wind, LLC
Map 3 - Turbine Layout and Constraints Map - Page 8 of 9
 Dodge County & Steele County, Minnesota
 Date: 12/10/2018

- Sensitive Receptors
- Snowmobile Trails (MNDNR)
- 3x5 Wind Buffer
- Existing Transmission Lines (Velocity Suite)
- 69 kV Line
- 161 kV Line
- Turbine Layout (11/16/2018)
- Project Area 03/13/2018 (±52,085 Ac.)
- City/Village
- Townships
- Counties



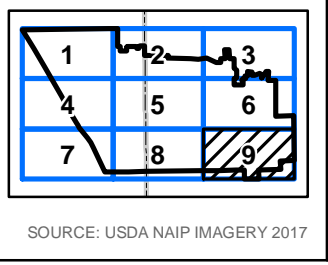
SOURCE: USDA NAIP IMAGERY 2017





Dodge County Wind, LLC
Map 3 - Turbine Layout and Constraints Map - Page 9 of 9
 Dodge County & Steele County, Minnesota
 Date: 12/10/2018

Sensitive Receptors	Existing Transmission Lines (Velocity Suite) 69 kV Line	Turbine Layout (11/16/2018)
3x5 Wind Buffer	161 kV Line	Project Area 03/13/2018 (±52,085 Ac.)
Snowmobile Trails (MNDNR)	City/Village	Townships
	Counties	



SOURCE: USDA NAIP IMAGERY 2017

