



Formal Natural Heritage Review - Cover Page

See next page for results of review. A draft watermark means the project details have not been finalized and the results are not official.

Project Name: Lyon County Generating Station Project

Project Proposer: Xcel Energy

Project Type: Power, Other

Project Type Activities: Other

TRS: T109 R41 S23

County(s): Lyon

DNR Admin Region(s): South

Reason Requested: PUC Site or Route Application

Project Description: Northern States Power Company, d/b/a Xcel Energy (Xcel Energy) is proposing to construct the Lyon County Generating Station in Lyon County, Minnesota (Project). ...

Existing Land Uses:

Landcover / Habitat Impacted:

Waterbodies Affected:

Groundwater Resources Affected:

Previous Natural Heritage Review: Yes, ERDB#: 2025-00144

Previous Habitat Assessments / Surveys: No

SUMMARY OF AUTOMATED RESULTS

Category	Results	Response By Category
Project Details	No Comments	No Further Review Required
Ecologically Significant Area	No Comments	No Further Review Required
State-Listed Endangered or Threatened Species	No Comments	No Further Review Required
State-Listed Species of Special Concern	No Comments	No Further Review Required
Federally Listed Species	No Records	Visit IPaC For Federal Review



Minnesota Department of Natural Resources
Division of Ecological & Water Resources
500 Lafayette Road, Box 25
St. Paul, MN 55155-4025

March 16, 2025

Project ID: MCE #2025-00277

Tyler Beemer
Burns & McDonnell
8201 Norman Center Drive, Suite 500
Bloomington, MN 55437

RE: Automated Natural Heritage Review of the proposed Lyon County Generating Station Project
See Cover Page for location and project details.

Dear Tyler Beemer,

As requested, the above project has been reviewed for potential effects to rare features. Given the project details provided on the cover page, I do not believe the proposed project will negatively affect any known occurrences of rare features. To ensure compliance with federal law, conduct a federal regulatory review using the U.S. Fish and Wildlife Service's (USFWS) online [Information for Planning and Consultation \(IPaC\) tool](#).

The Natural Heritage Information System (NHIS), a collection of databases that contains information about Minnesota's rare natural features, is maintained by the Division of Ecological and Water Resources, Department of Natural Resources. The NHIS is continually updated as new information becomes available, and is the most complete source of data on Minnesota's rare or otherwise significant species, native plant communities, and other natural features. However, the NHIS is not an exhaustive inventory and thus does not represent all of the occurrences of rare features within the state. Therefore, ecologically significant features for which we have no records may exist within the project area. If additional information becomes available regarding rare features in the vicinity of the project, further review may be necessary.

For environmental review purposes, the results of this Natural Heritage Review are valid for one year; the results are only valid for the project location and the project description provided on the cover page. If project details change or construction has not occurred within one year, please resubmit the project for review before initiating project activities.

The Natural Heritage Review does not constitute project approval by the Department of Natural Resources. Instead, it identifies issues regarding known occurrences of rare features and potential impacts to these rare features. For information on the environmental review process or other natural resource concerns, you may contact your [DNR Regional Environmental Assessment Ecologist](#).

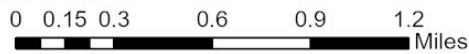
Thank you for consulting us on this matter, and for your interest in preserving Minnesota's rare natural resources.

Sincerely, *The Natural Heritage Review Team* [Natural Heritage Review Program](#)
Review.NHIS@state.mn.us

Links: USFWS Information for Planning and Consultation (IPaC) tool
[Information for Planning and Consultation \(IPaC\) tool](#)
DNR Regional Environmental Assessment Ecologist Contact Info
https://www.dnr.state.mn.us/eco/ereview/erp_regioncontacts.html

Lyon County Generating Station Project

Aerial Imagery With Locator Map



 Project Boundary

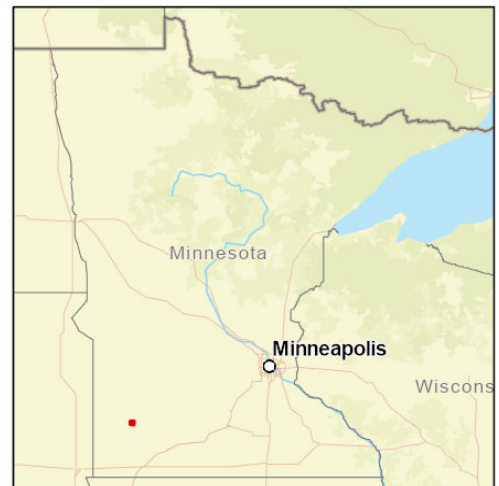
Project Type: Power, Other

Project Size (acres): 152.20

County(s): Lyon

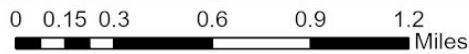
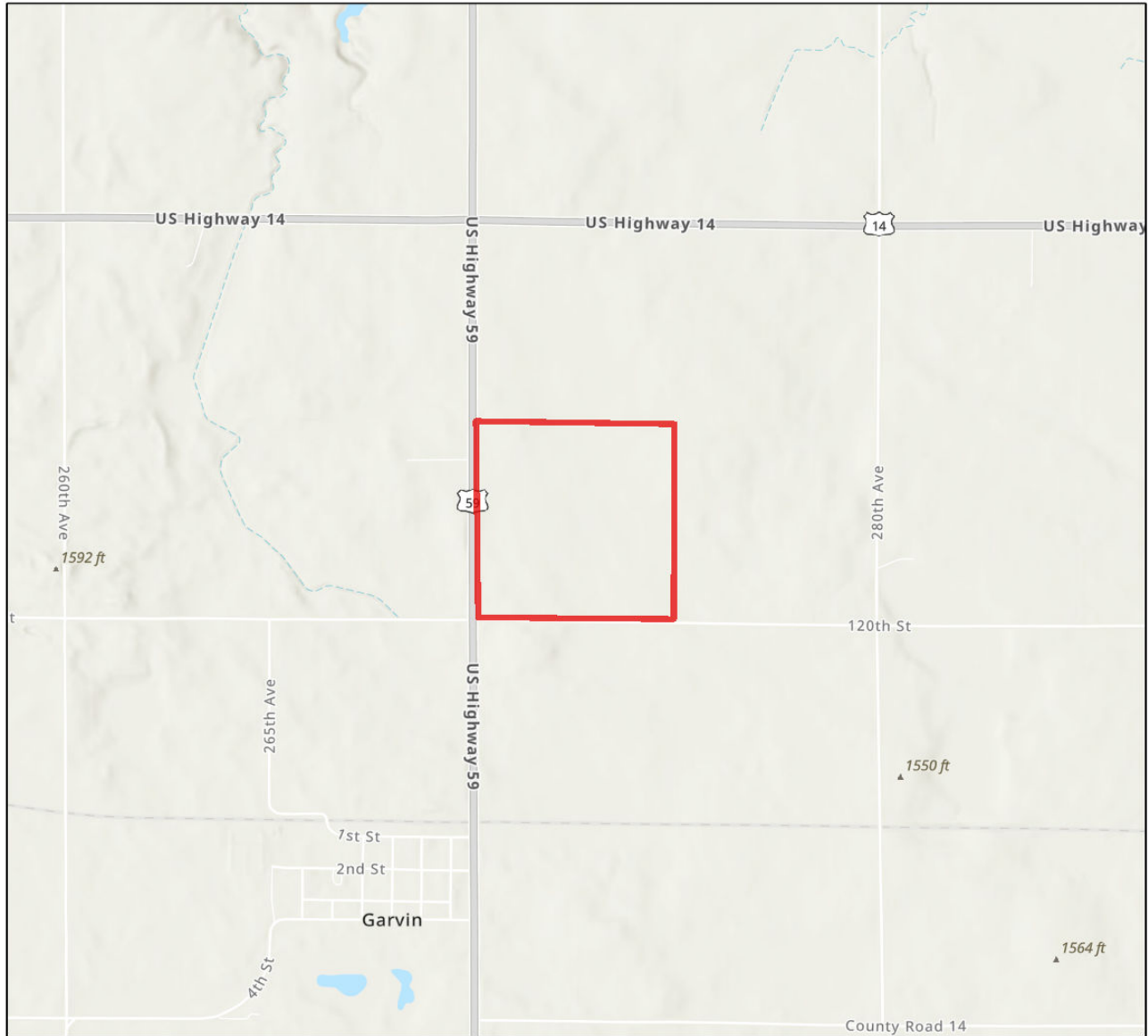
TRS: T109 R41 S23

Esri, TomTom, Garmin, FAO, NOAA, USGS, EPA, USFWS
Maxar
Esri, TomTom, Garmin, SafeGraph, GeoTechnologies, Inc, METI/NASA, USGS,



Lyon County Generating Station Project

USA Topo Basemap With Locator Map



 Project Boundary

Project Type: Power, Other

Project Size (acres): 152.20

County(s): Lyon

TRS: T109 R41 S23

Esri, TomTom, Garmin, FAO, NOAA, USGS, EPA, USFWS
Esri, NASA, NGA, USGS, FEMA
Esri, TomTom, Garmin, SafeGraph, GeoTechnologies, Inc, METI/NASA, USGS,

