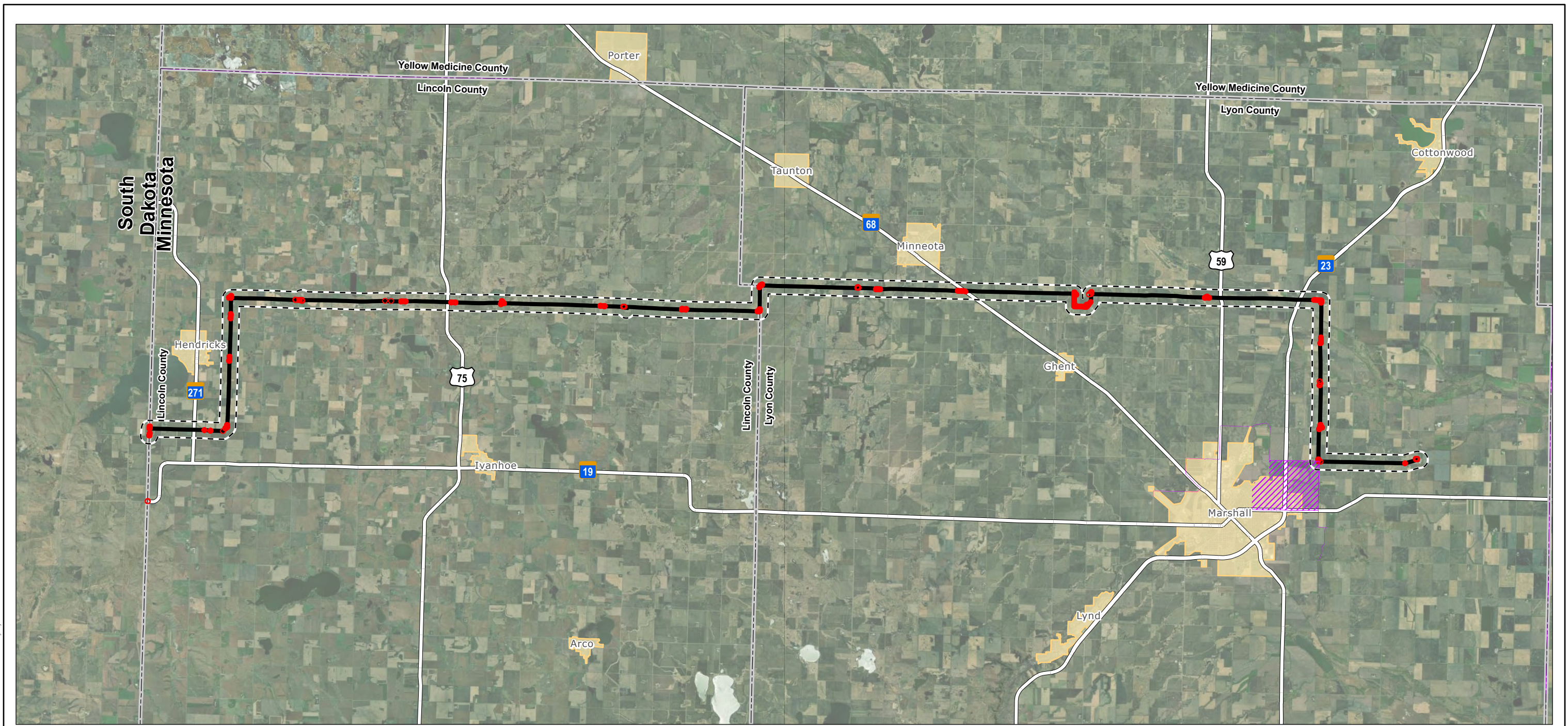
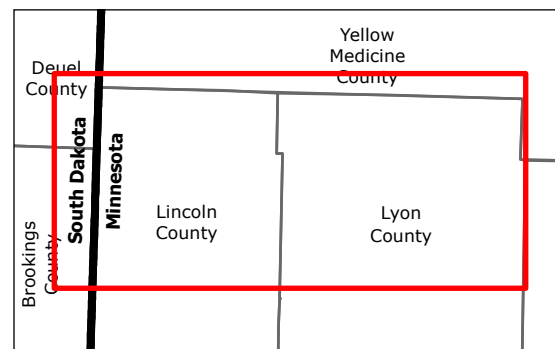


Figures - Part 2

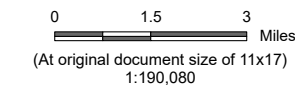
Includes Figures 6, 7, 8, 9



V:\2277\active\227705875\03_data\gis_cad\gis\proj\minor_alteration\minor_alteration.aprx Revised: 2023-11-02 By: kjmueller



- Legend**
- Project Study Area
 - 1/4 Mile Buffer
 - Municipality
 - Major Highway
 - County Boundary
 - MPCA Environmental Justice Areas
 - Consider for poverty issues

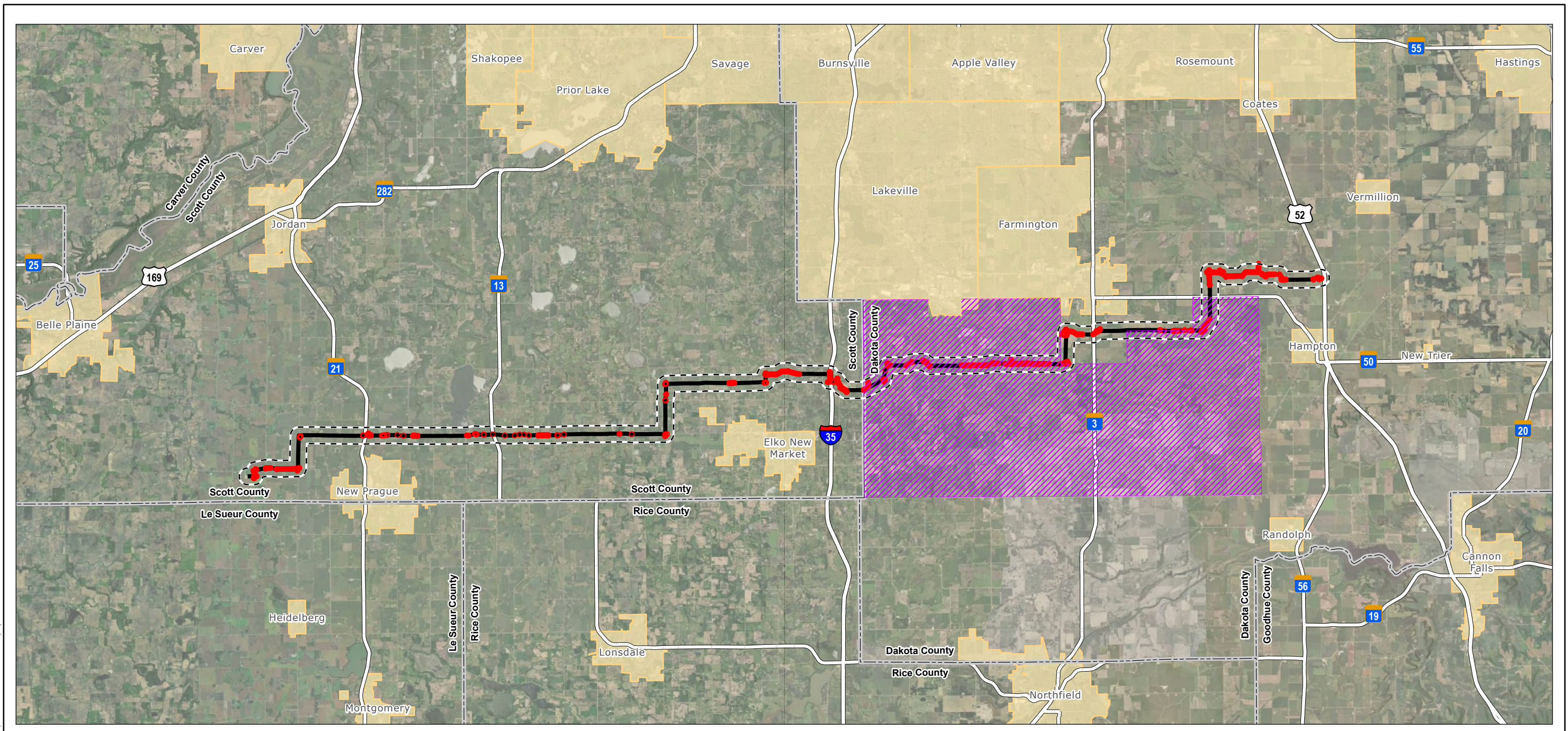


Project Location Lincoln Co., MN to Lyon Co., MN
Scott Co. to Dakota Co., MN

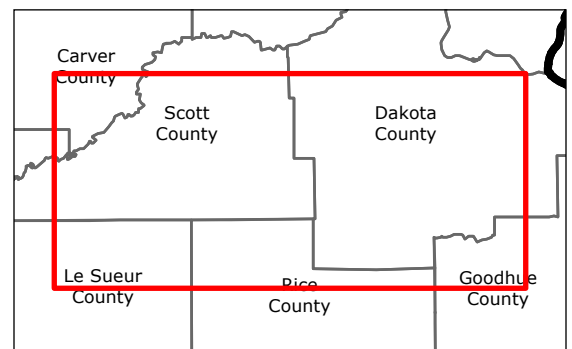
Client/Project Xcel Energy
Brookings Co. to Lyon Co. & Helena to Hampton
Minor Alteration

Figure No. 6a

Title MPCA EJ Census Tracts - Brookings Co. to Lyon Co.



V:\2277\active\227705875\03_data\gis\cap\minor_alteration\minor_alteration.aprx Revised: 2023-11-02 By: kjmueller



- Legend**
- Project Study Area
 - Temporary Workspace
 - 1/4 Mile Buffer
 - Municipality
 - Major Highway
 - County Boundary
 - MPCA Environmental Justice Areas**
 - Consider for poverty issues

0 1.5 3 Miles
 (At original document size of 11x17)
 1:190,080

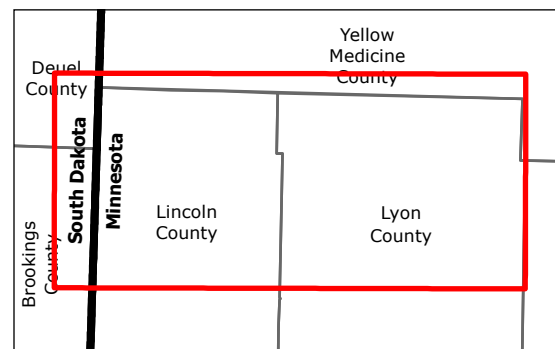
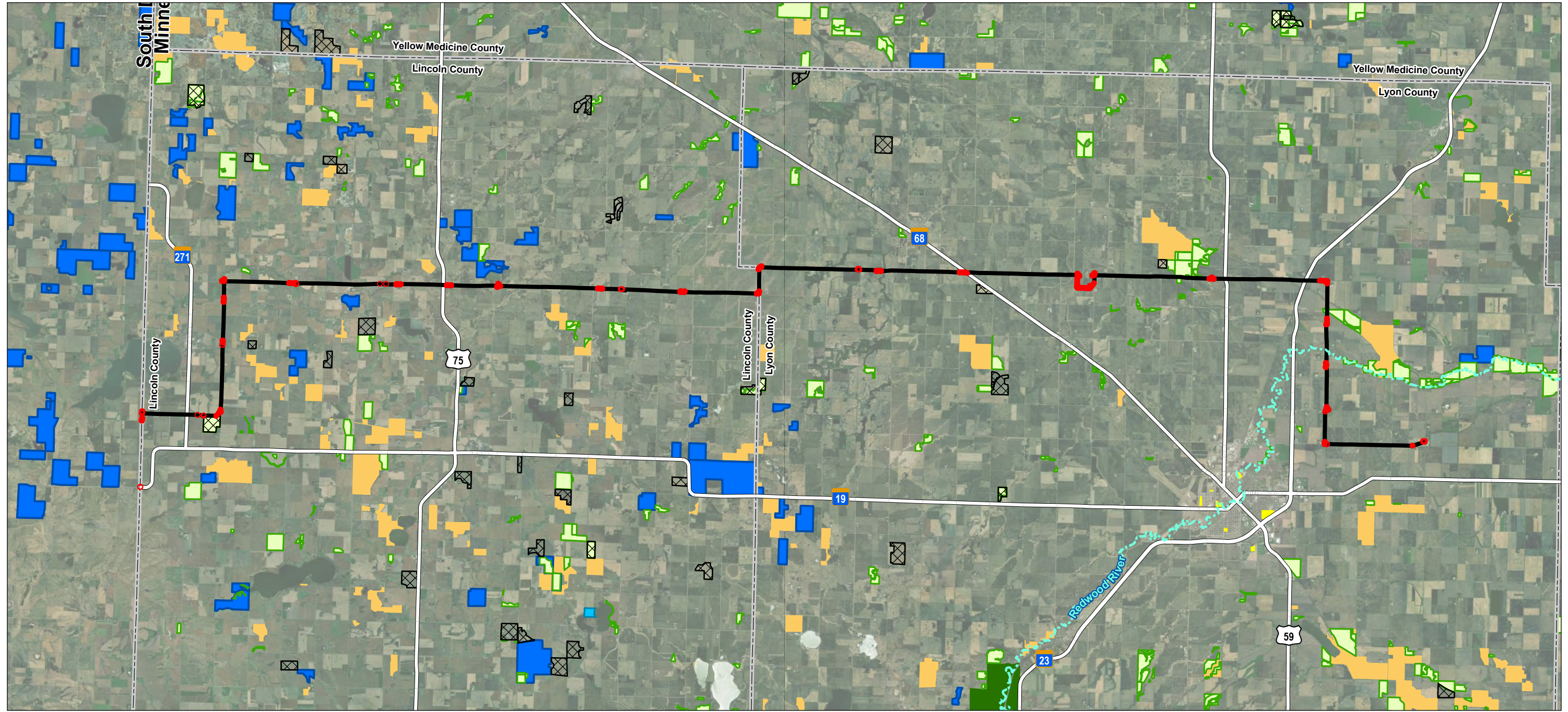


Project Location Prepared by KJM on 2023-11-02
 Lincoln Co., MN to Lyon Co., MN
 Scott Co. to Dakota Co., MN

Client/Project 227705875
 Xcel Energy
 Brookings Co. to Lyon Co. & Helena to Hampton
 Minor Alteration

Figure No.
6b

Title
MPCA EJ Census Tracts - Helena to Hampton



- Legend**
- Project Study Area
 - Temporary Workspace
 - Major Highway
 - Water Trails in Minnesota
 - County Boundary
 - MnDNR Walk in Access Sites
 - BWSR Conservation Easements (RIM Reserve)

- USFWS National Realty Boundaries
- Local Government
- MNDNR Management Units - LRS**
- Aquatic Management Area - AMA
- State Parks
- Wildlife Management Area - WMA

0 1.5 3 Miles
 (At original document size of 11x17)
 1:190,080



Project Location
 Lincoln Co., MN to Lyon Co., MN
 Scott Co. to Dakota Co., MN

Client/Project
 Xcel Energy
 Brookings Co. to Lyon Co. & Helena to Hampton
 Minor Alteration

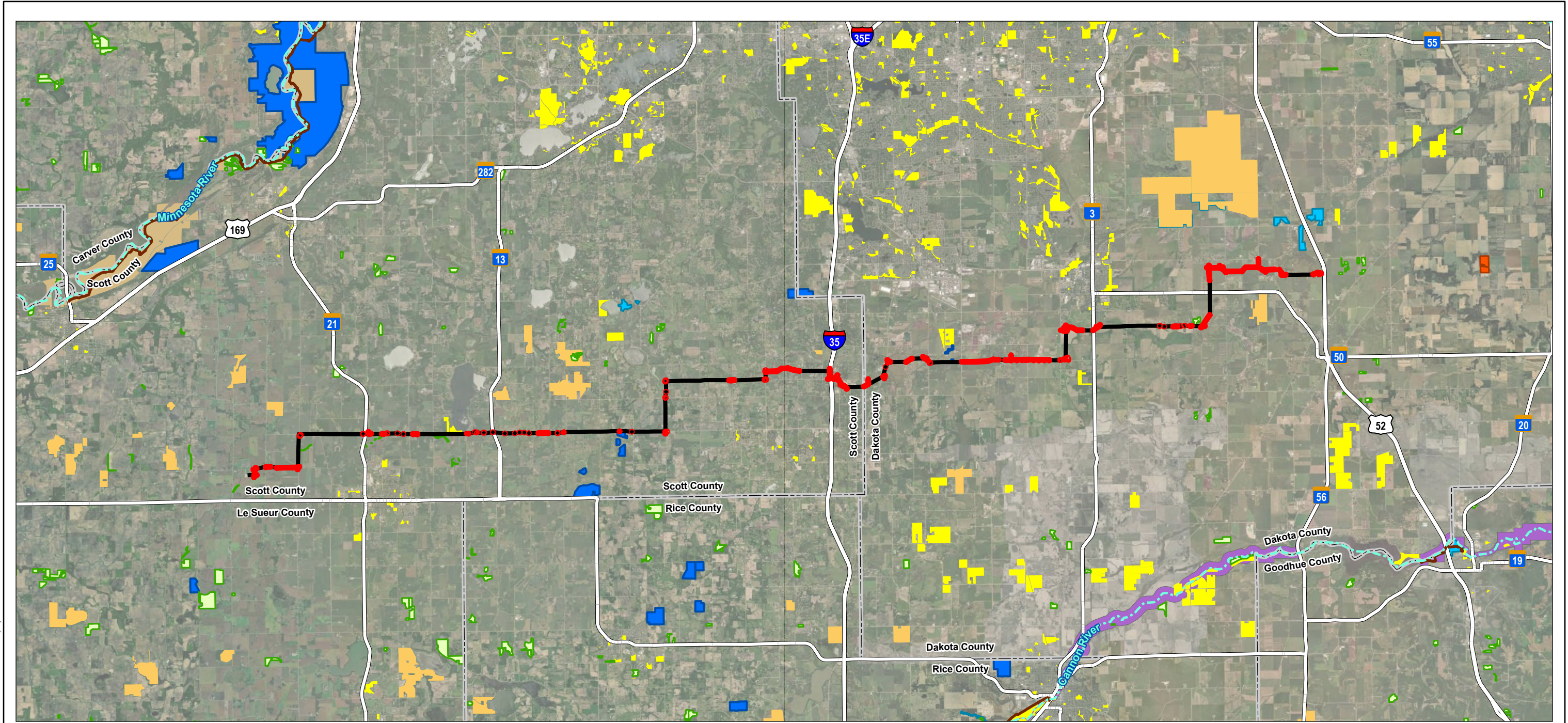
Figure No.
7a

Title
**Managed Lands and Recreation -
 Brookings Co. to Lyon Co.**

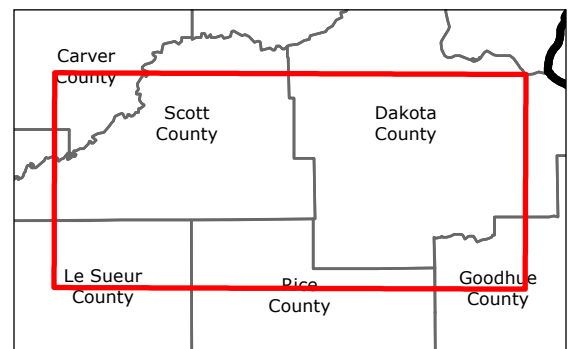
V:\2277\active\227705875\03_data\gis\proj\minor_alteration\minor_alteration.aprx Revised: 2023-11-02 By: kjmueller

Notes
 1. Coordinate System: NAD 1983 StatePlane Minnesota Central FIPS 2202 Feet
 2. Data Sources: Stantec, Xcel, MNDOT, MNDNR, USFWS
 3. Background: ESRI World Imagery

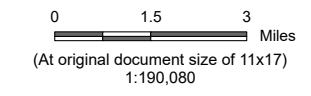
Disclaimer: This document has been prepared based on information provided by others as cited in the Notes section. Stantec has not verified the accuracy and/or completeness of this information and shall not be responsible for any errors or omissions which may be incorporated herein as a result. Stantec assumes no responsibility for data supplied in electronic format, and the recipient accepts full responsibility for verifying the accuracy and completeness of the data.



V:\2277\active\227705875\03_data\gis\cap\minor_alteration\minor_alteration.aprx Revised: 2023-11-02 By: kjmueller



- Legend**
- Project Study Area
 - Temporary Workspace
 - Major Highway
 - Water Trails in Minnesota
 - Minnesota State Trails (MS 85.015)
 - County Boundary
 - BWSR Conservation Easements (RIM Reserve)
 - USFWS National Realty Boundaries
 - Local Government
 - Wild, Scenic, and Recreational River (WSR) Boundaries and Districts
 - MNDNR Management Units - LRS
 - Aquatic Management Area - AMA
 - Scientific and Natural Area - SNA
 - Other Forest Land
 - State Park Recreation Areas
 - Wildlife Management Area - WMA

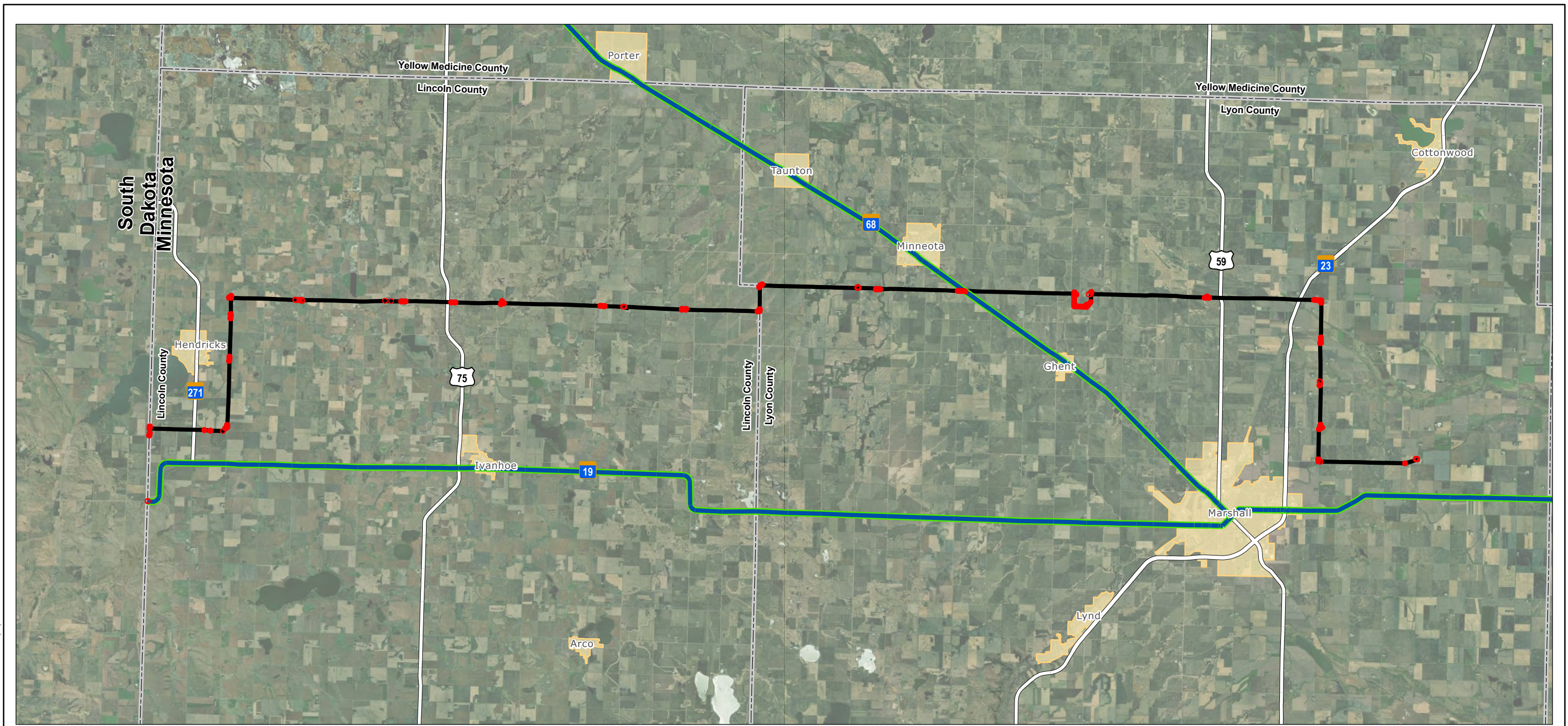


Project Location Lincoln Co., MN to Lyon Co., MN
 Scott Co. to Dakota Co., MN

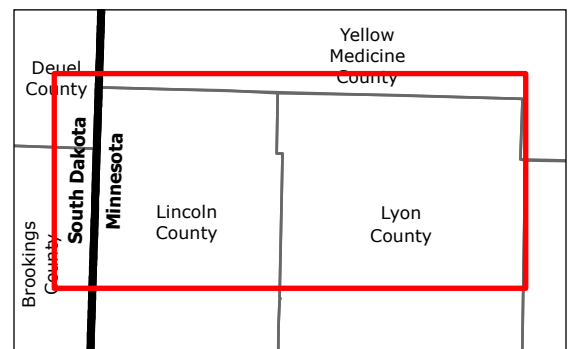
Client/Project Xcel Energy
 Brookings Co. to Lyon Co. & Helena to Hampton
 Minor Alteration

Figure No. 7b

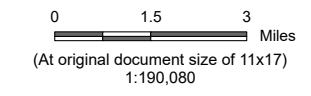
Managed Lands and Recreation - Helena to Hampton



V:\2277\active\227705875\03_data\gis_cad\gis\proj\minor_alteration\minor_alteration.aprx Revised: 2023-11-02 By: kjmueller



- Legend**
- Project Study Area
 - Temporary Workspace
 - MnDOT Regulated Roads that Intersect Temporary Workspace
 - Major Highway
 - Municipality
 - County Boundary



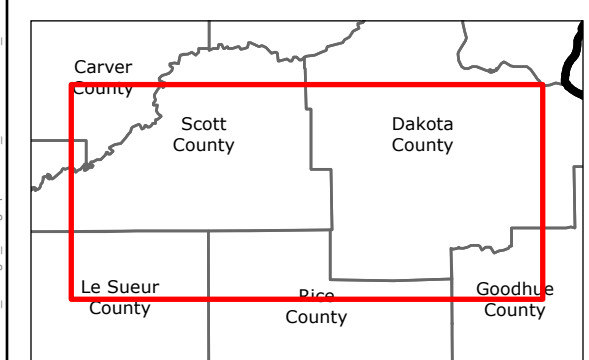
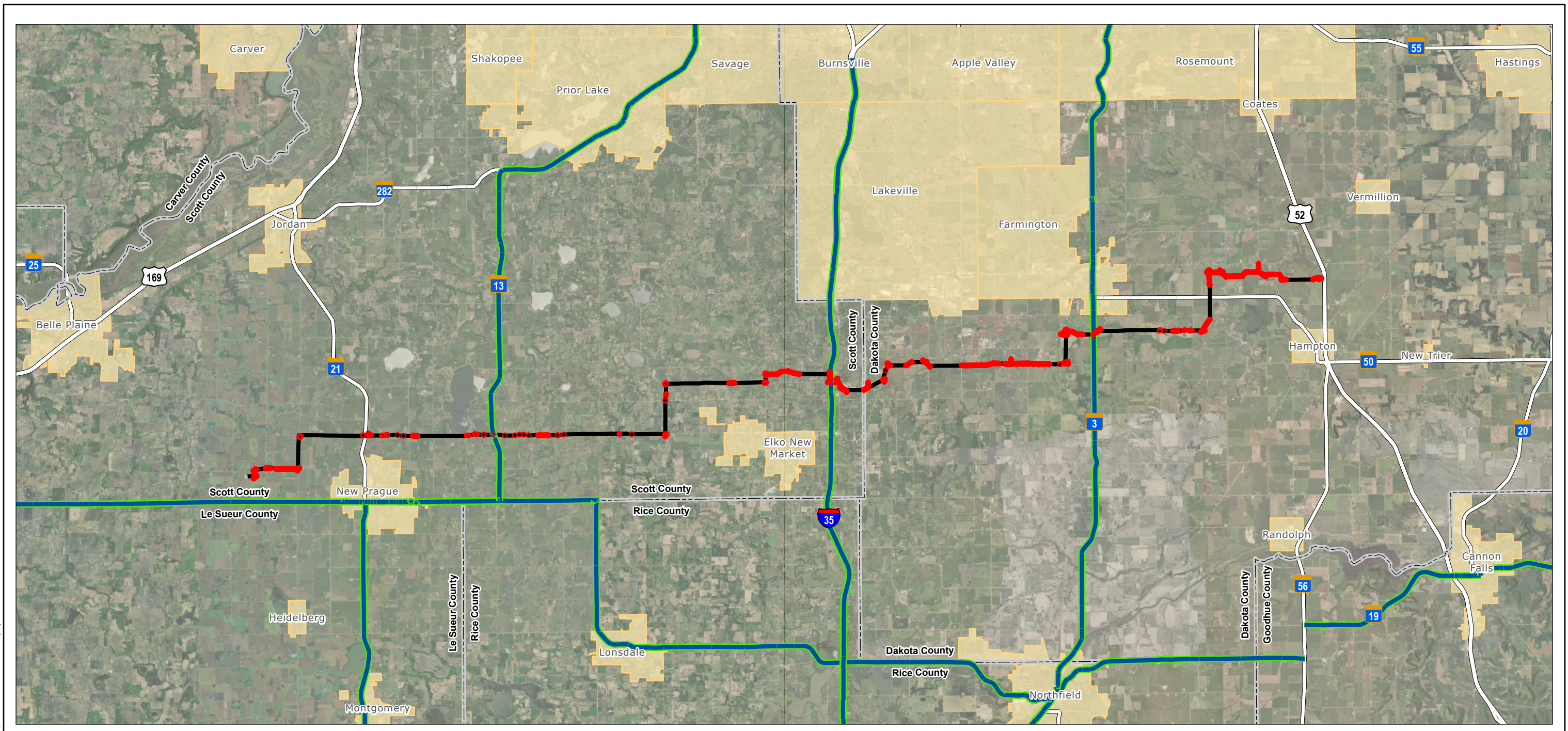
Project Location Lincoln Co., MN to Lyon Co., MN Prepared by KJM on 2023-11-02

Client/Project Xcel Energy 227705875

Brookings Co. to Lyon Co. & Helena to Hampton
Minor Alteration

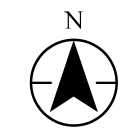
Figure No.
8a

Title
MnDOT Regulated Roads - Brookings Co. to Lyon Co.



- Legend**
- Project Study Area
 - Temporary Workspace
 - MnDOT Regulated Roads that Intersect Temporary Workspace
 - Major Highway
 - Municipality
 - County Boundary

0 1.5 3 Miles
 (At original document size of 11x17)
 1:190,080



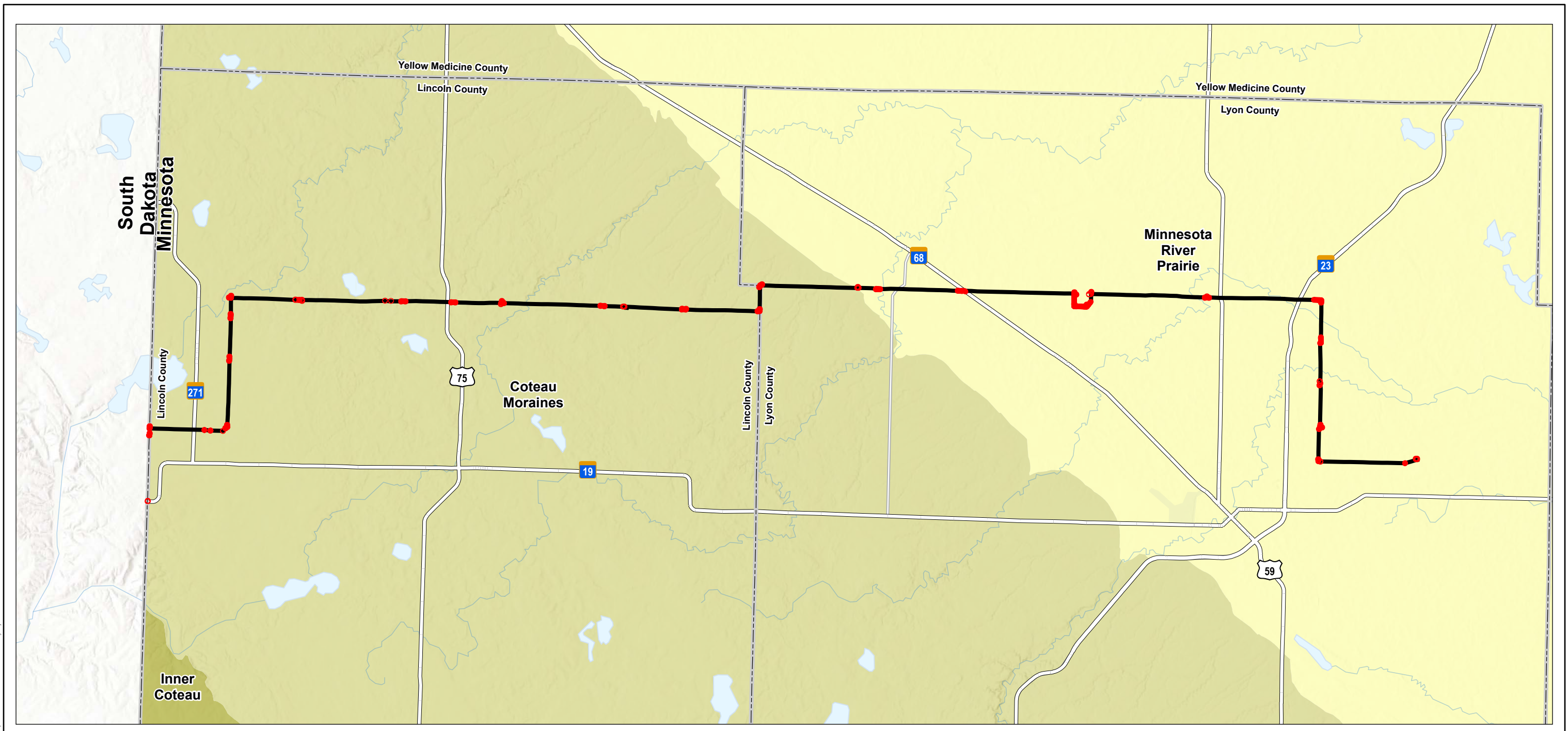
Project Location Prepared by KJM on 2023-11-02
 Lincoln Co., MN to Lyon Co., MN
 Scott Co. to Dakota Co., MN

Client/Project 227705875
 Xcel Energy
 Brookings Co. to Lyon Co. & Helena to Hampton
 Minor Alteration

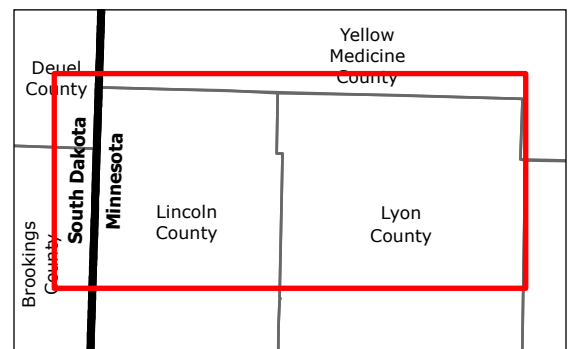
Figure No.
8b

Title
MnDOT Regulated Roads - Helena to Hampton

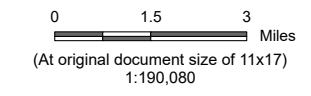
Notes
 1. Coordinate System: NAD 1983 StatePlane Minnesota South FIPS 2203 Feet
 2. Data Sources: Stantec, Xcel, MNDOT, HIFLD, US Census
 3. Background: ESRI World Imagery



V:\2277\active\227705875\03_data\gis_cad\gis\proj\minor_alteration\minor_alteration.aprx Revised: 2023-11-02 By: kjmueller



- Legend**
- Project Study Area
 - Temporary Workspace
 - Major Highway
 - County Boundary
- Ecological Subsections of Minnesota**
- Q - Minnesota River Prairie
 - T - Inner Coteau
 - U - Coteau Moraines

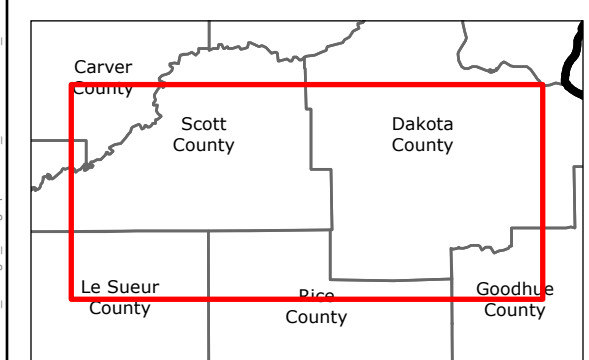
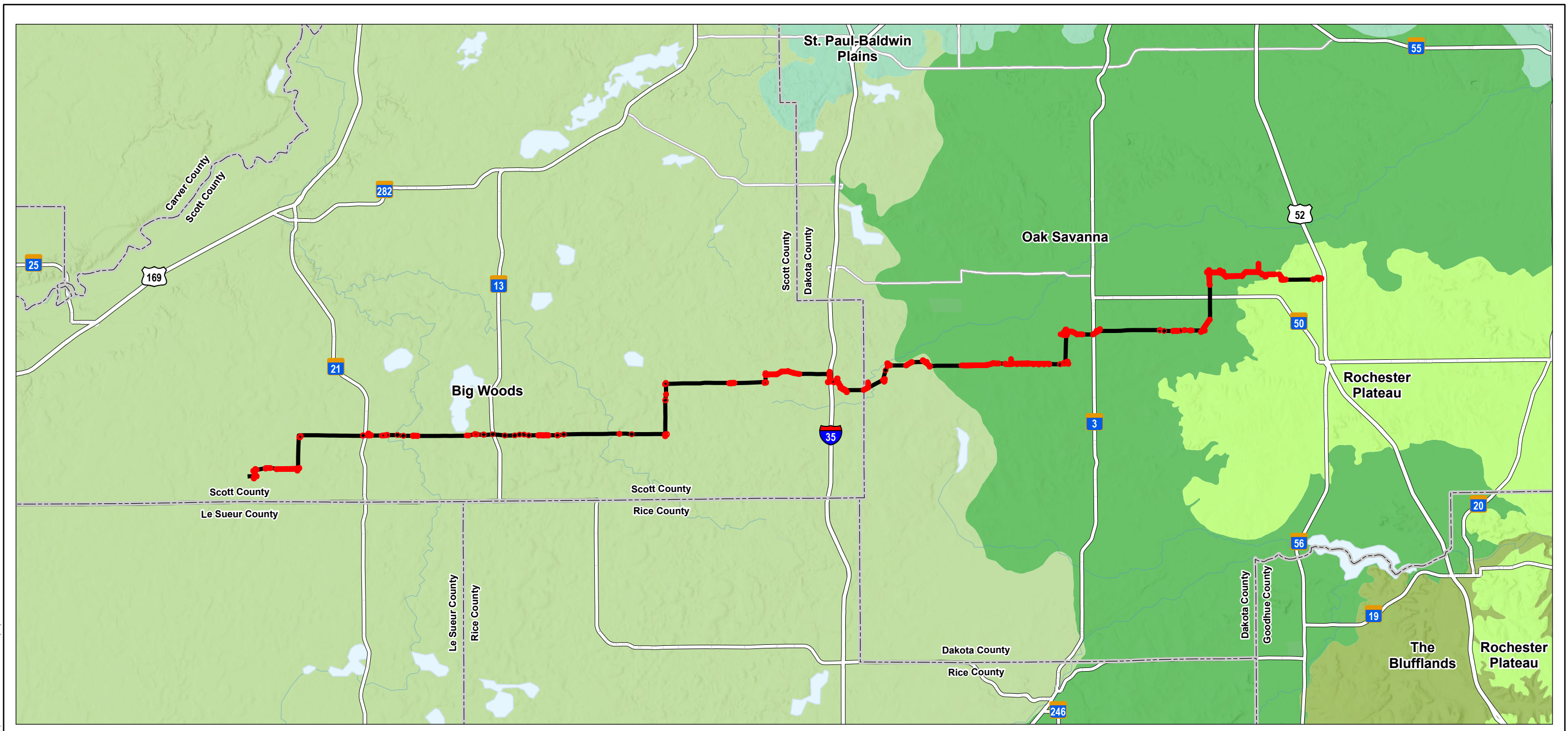


Project Location Prepared by KJM on 2023-11-02
 Lincoln Co., MN to Lyon Co., MN
 Scott Co. to Dakota Co., MN

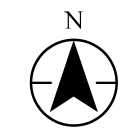
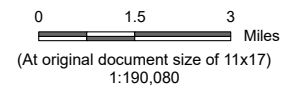
Client/Project 227705875
 Xcel Energy
 Brookings Co. to Lyon Co. & Helena to Hampton
 Minor Alteration

Figure No.
9a

Title
**Ecological Classification System -
 Brookings Co. to Lyon Co.**



- Legend**
- Project Study Area
 - Temporary Workspace
 - Major Highway
 - County Boundary
- Ecological Subsections of Minnesota**
- R - Big Woods
 - S - St. Paul-Baldwin Plains and Moraines
 - V - Oak Savanna
 - W - Rochester Plateau
 - X - The Blufflands



Project Location Lincoln Co., MN to Lyon Co., MN
 Scott Co. to Dakota Co., MN

Client/Project Xcel Energy
 Brookings Co. to Lyon Co. & Helena to Hampton
 Minor Alteration

Figure No. **9b**

Title **Ecological Classification System - Helena to Hampton**

Notes
 1. Coordinate System: NAD 1983 StatePlane Minnesota South FIPS 2203 Feet
 2. Data Sources: Stantec, Xcel, MNDOT, MNDNR
 3. Background: NAIP 2021