

Proposed Pipeline - Sandpiper	Milepost - Sandpiper	Tract Boundary
Existing Enbridge Pipelines	Potential Block Valve	Facility Boundary
Foreign Pipes	Environmental Survey Area (ESA)	Previously Sited Facility Boundary
Transmission Lines		Section Lines
SPREAD BREAK		

500 250 0 500 1,000 Feet

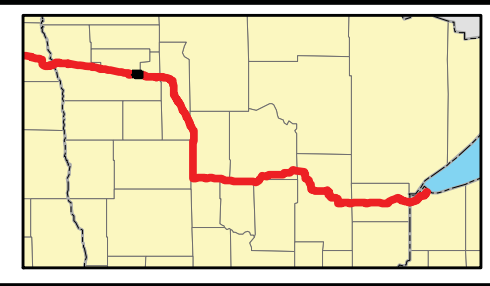
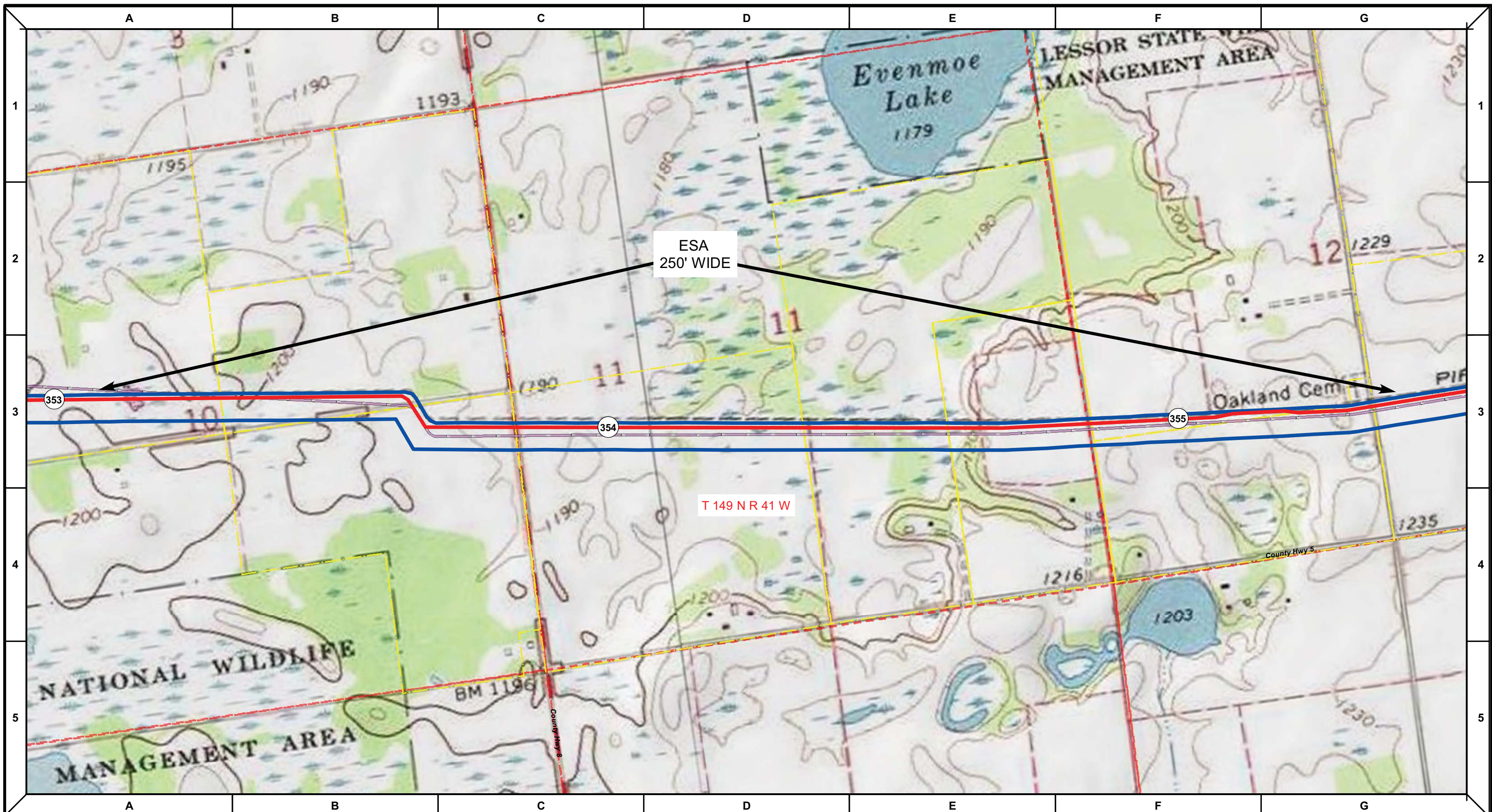
DRAWN	CHECKED	APPROVED	DATE	REV NO.	DESCRIPTION
			1/29/14	2	PUC Update - Revision D-2 Alignment
			12/19/13	1	PUC Update - Revision D Alignment
			10/10/13	0	PUC Submittal

**NORTH DAKOTA PIPELINE COMPANY LLC**

**PROPOSED SANDPIPER  
 PIPELINE PROJECT  
 ROUTE MAP  
 Polk County, MN**

<small>DRAWN:</small> MLB	<small>CHECKED:</small> --
<small>DATE:</small> Jan 30, 2014	<small>SCALE:</small> AS SHOWN

Spread:5 Map: 24 of 123



Proposed Pipeline - Sandpiper	Milepost - Sandpiper	Tract Boundary
Existing Enbridge Pipelines	Potential Block Valve	Facility Boundary
Foreign Pipes	Environmental Survey Area (ESA)	Previously Sited Facility Boundary
Transmission Lines		Section Lines
SPREAD BREAK		

500 250 0 500 1,000 Feet

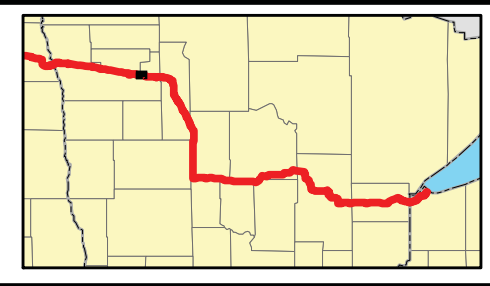
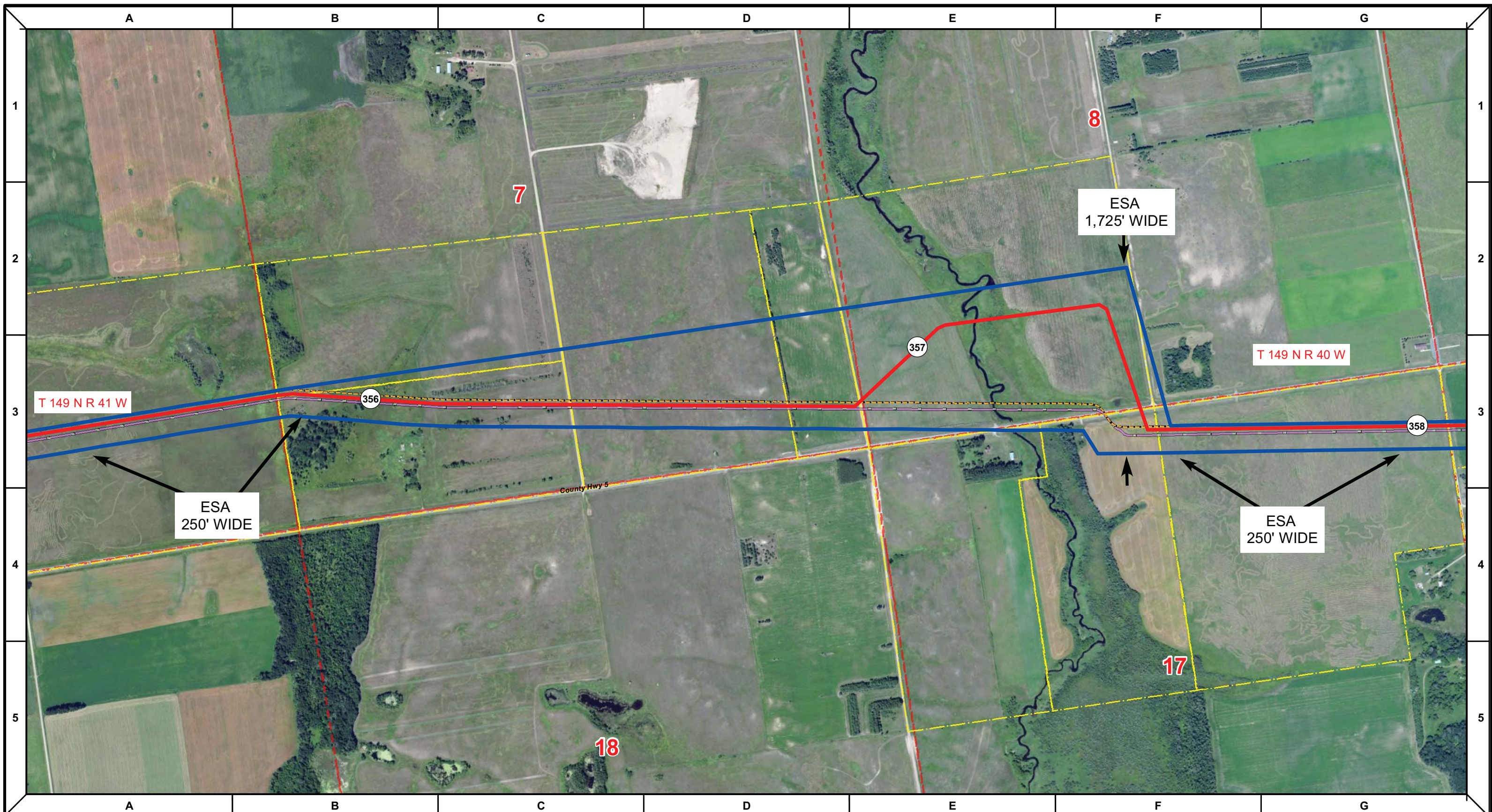
DRAWN	CHECKED	APPROVED	DATE	REV NO.	DESCRIPTION
			1/29/14	2	PUC Update - Revision D-2 Alignment
			12/19/13	1	PUC Update - Revision D Alignment
			10/10/13	0	PUC Submittal

**NORTH DAKOTA PIPELINE COMPANY LLC**

**PROPOSED SANDPIPER PIPELINE PROJECT**  
**ROUTE MAP**  
**Polk County, MN**

<small>DRAWN:</small> MLB	<small>CHECKED:</small> --
<small>DATE:</small> Jan 30, 2014	<small>SCALE:</small> AS SHOWN

Spread:5 Map: 24 of 123



Proposed Pipeline - Sandpiper	Milepost - Sandpiper	Tract Boundary
Existing Enbridge Pipelines	Potential Block Valve	Facility Boundary
Foreign Pipes	Environmental Survey Area (ESA)	Previously Sited Facility Boundary
Transmission Lines		Section Lines
SPREAD BREAK		

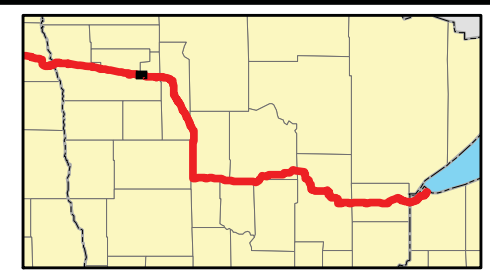
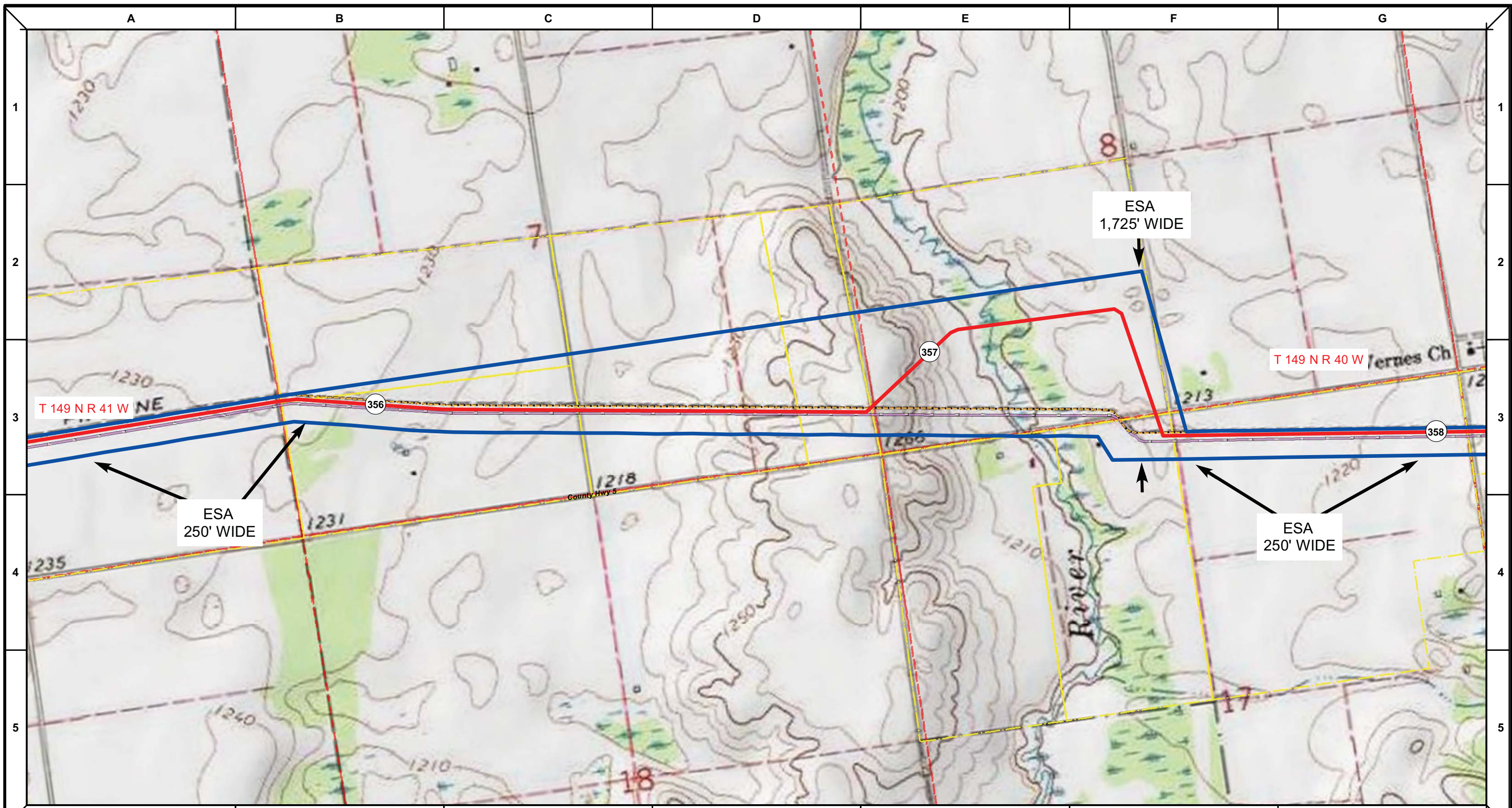
500 250 0 500 1,000 Feet

DRAWN	CHECKED	APPROVED	DATE	REV NO.	DESCRIPTION
			1/29/14	2	PUC Update - Revision D-2 Alignment
			12/19/13	1	PUC Update - Revision D Alignment
			10/10/13	0	PUC Submittal

**NORTH DAKOTA PIPELINE COMPANY LLC**  
**PROPOSED SANDPIPER PIPELINE PROJECT**  
**ROUTE MAP**  
**Polk County, MN**

DRAWN: <i>MLB</i>	CHECKED: <i>-</i>
DATE: <i>Jan 30, 2014</i>	SCALE: <i>AS SHOWN</i>

Spread:5 Map: 25 of 123



Proposed Pipeline - Sandpiper	Milepost - Sandpiper	Tract Boundary
Existing Enbridge Pipelines	Potential Block Valve	Facility Boundary
Foreign Pipes	Environmental Survey Area (ESA)	Previously Sited Facility Boundary
Transmission Lines		Section Lines
SPREAD BREAK		

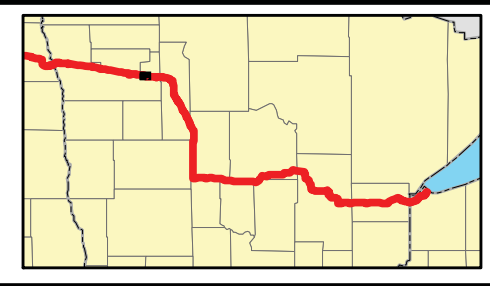
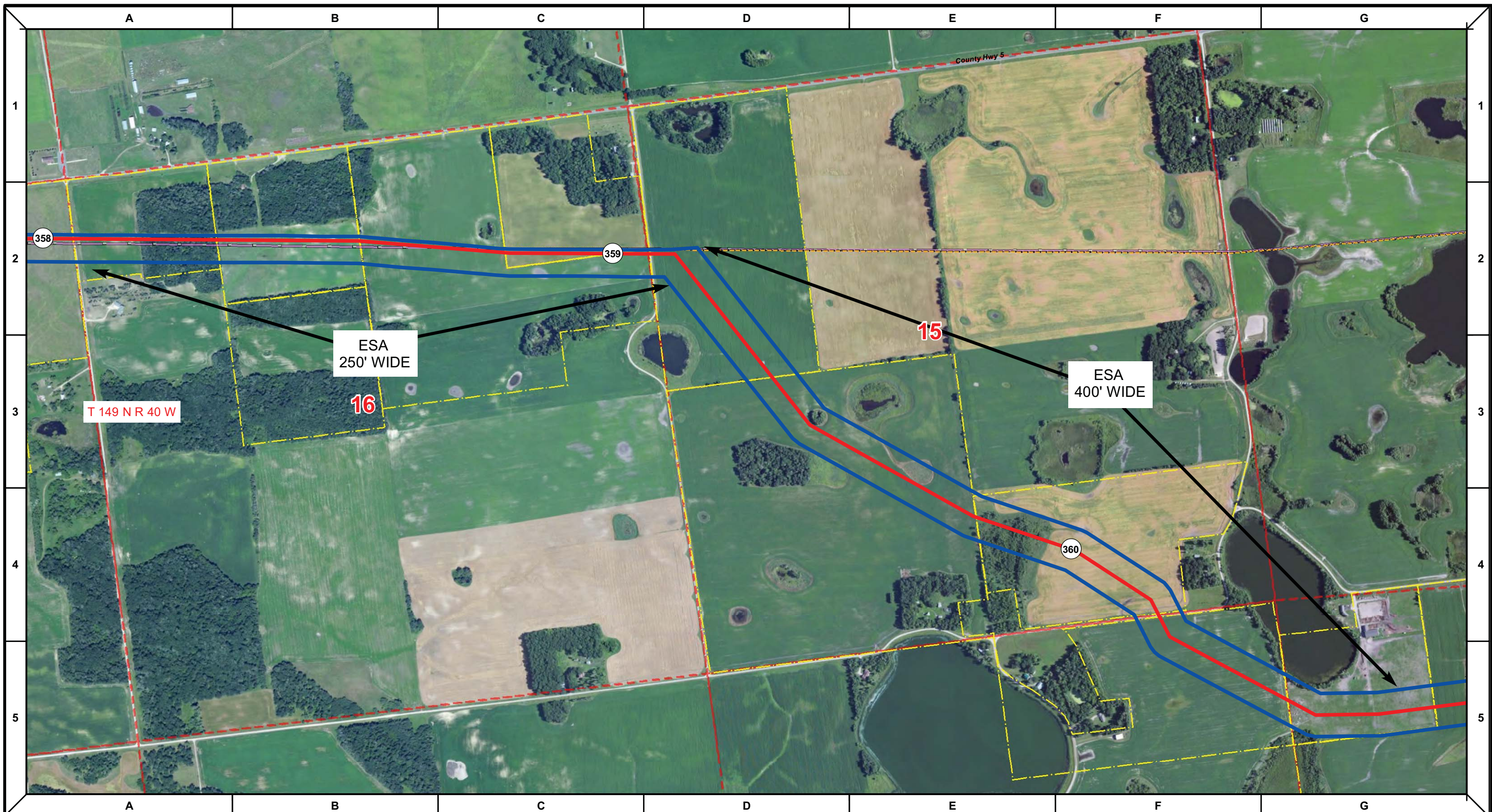
500 250 0 500 1,000 Feet

DRAWN	CHECKED	APPROVED	DATE	REV NO.	DESCRIPTION
			1/29/14	2	PUC Update - Revision D-2 Alignment
			12/19/13	1	PUC Update - Revision D Alignment
			10/10/13	0	PUC Submittal

**NORTH DAKOTA PIPELINE COMPANY LLC**  
**PROPOSED SANDPIPER PIPELINE PROJECT**  
**ROUTE MAP**  
**Polk County, MN**

DRAWN: <b>MLB</b>	CHECKED: <b>-</b>
DATE: <b>Jan 30, 2014</b>	SCALE: <b>AS SHOWN</b>

Spread:5      Map: 25 of 123



Proposed Pipeline - Sandpiper	Milepost - Sandpiper	Tract Boundary
Existing Enbridge Pipelines	Potential Block Valve	Facility Boundary
Foreign Pipes	Environmental Survey Area (ESA)	Previously Sited Facility Boundary
Transmission Lines		Section Lines
SPREAD BREAK		

500 250 0 500 1,000 Feet

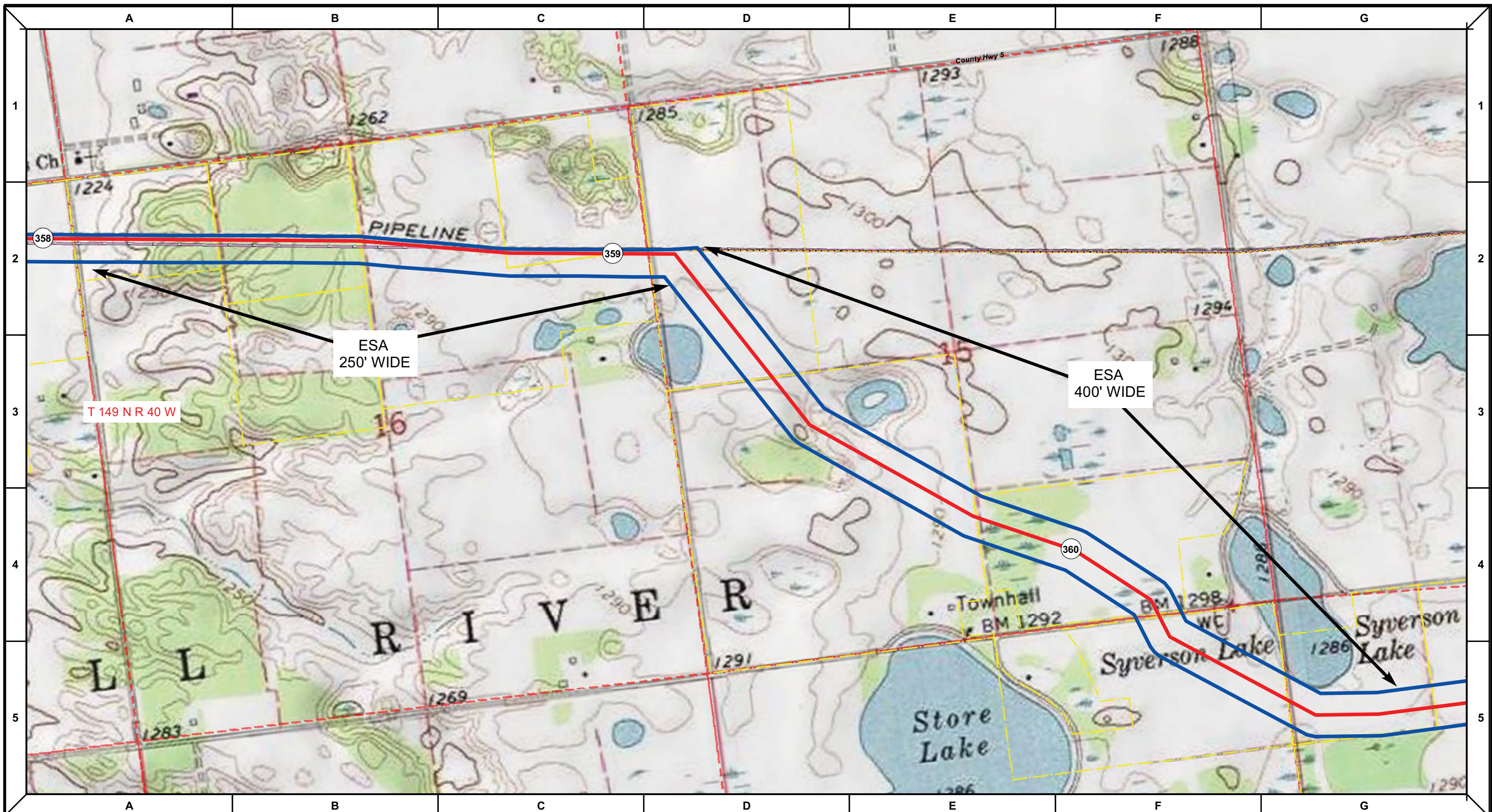
DRAWN	CHECKED	APPROVED	DATE	REV NO.	DESCRIPTION
			1/29/14	2	PUC Update - Revision D-2 Alignment
			12/19/13	1	PUC Update - Revision D Alignment
			10/10/13	0	PUC Submittal

**NORTH DAKOTA PIPELINE COMPANY LLC**

**PROPOSED SANDPIPER PIPELINE PROJECT**  
**ROUTE MAP**  
**Polk County, MN**

<small>DRAWN:</small> <b>MLB</b>	<small>CHECKED:</small> <b>--</b>
<small>DATE:</small> <b>Jan 30, 2014</b>	<small>SCALE:</small> <b>AS SHOWN</b>

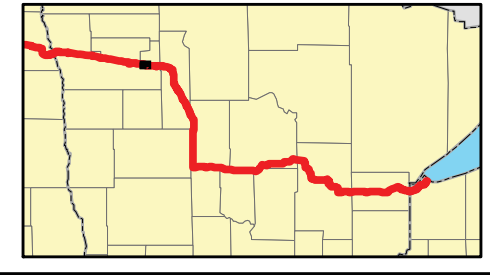
Spread:5 Map: 26 of 123



ESA  
250' WIDE

ESA  
400' WIDE

T 149 N R 40 W



Proposed Pipeline - Sandpiper	Milepost - Sandpiper	Tract Boundary
Existing Enbridge Pipelines	Potential Block Valve	Facility Boundary
Foreign Pipes	Environmental Survey Area (ESA)	Previously Sited Facility Boundary
Transmission Lines		Section Lines
SPREAD BREAK		

500 250 0 500 1,000 Feet

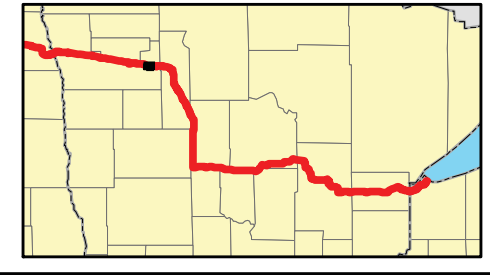
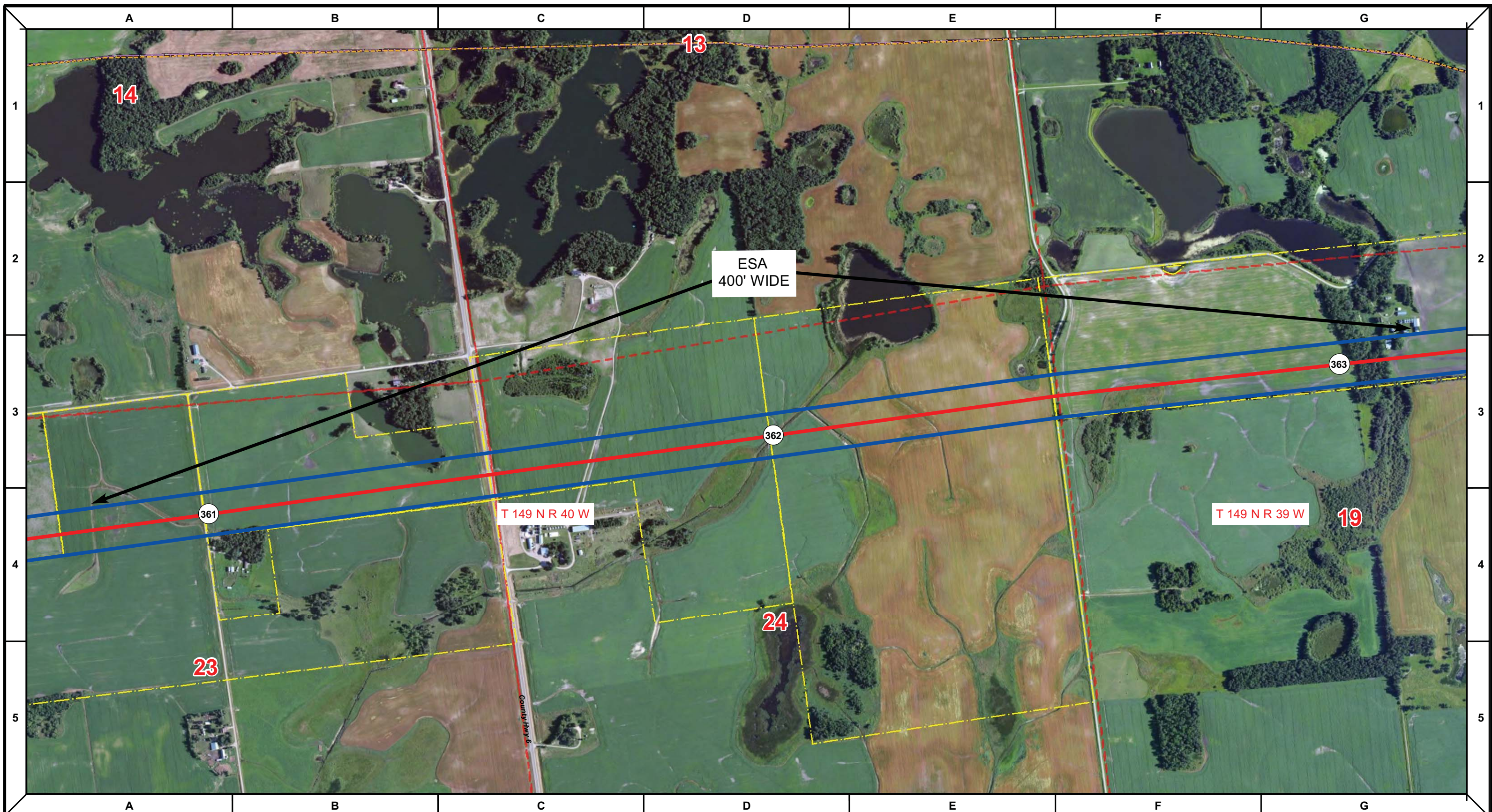
DRAWN	CHECKED	APPROVED	DATE	REV NO.	DESCRIPTION
			1/29/14	2	PUC Update - Revision D-2 Alignment
			12/19/13	1	PUC Update - Revision D Alignment
			10/10/13	0	PUC Submittal

**ENBRIDGE**  
NORTH DAKOTA PIPELINE COMPANY LLC

**PROPOSED SANDPIPER  
PIPELINE PROJECT  
ROUTE MAP  
Polk County, MN**

DRAWN: <b>MLB</b>	CHECKED: <b>-</b>
DATE: <b>Jan 30, 2014</b>	SCALE: <b>AS SHOWN</b>

Spread:5 Map: 26 of 123



Proposed Pipeline - Sandpiper	Milepost - Sandpiper	Tract Boundary
Existing Enbridge Pipelines	Potential Block Valve	Facility Boundary
Foreign Pipes	Environmental Survey Area (ESA)	Previously Sited Facility Boundary
Transmission Lines		Section Lines
SPREAD BREAK		

500 250 0 500 1,000 Feet

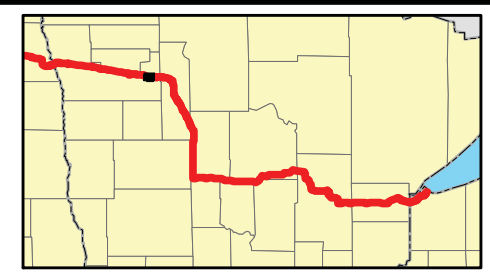
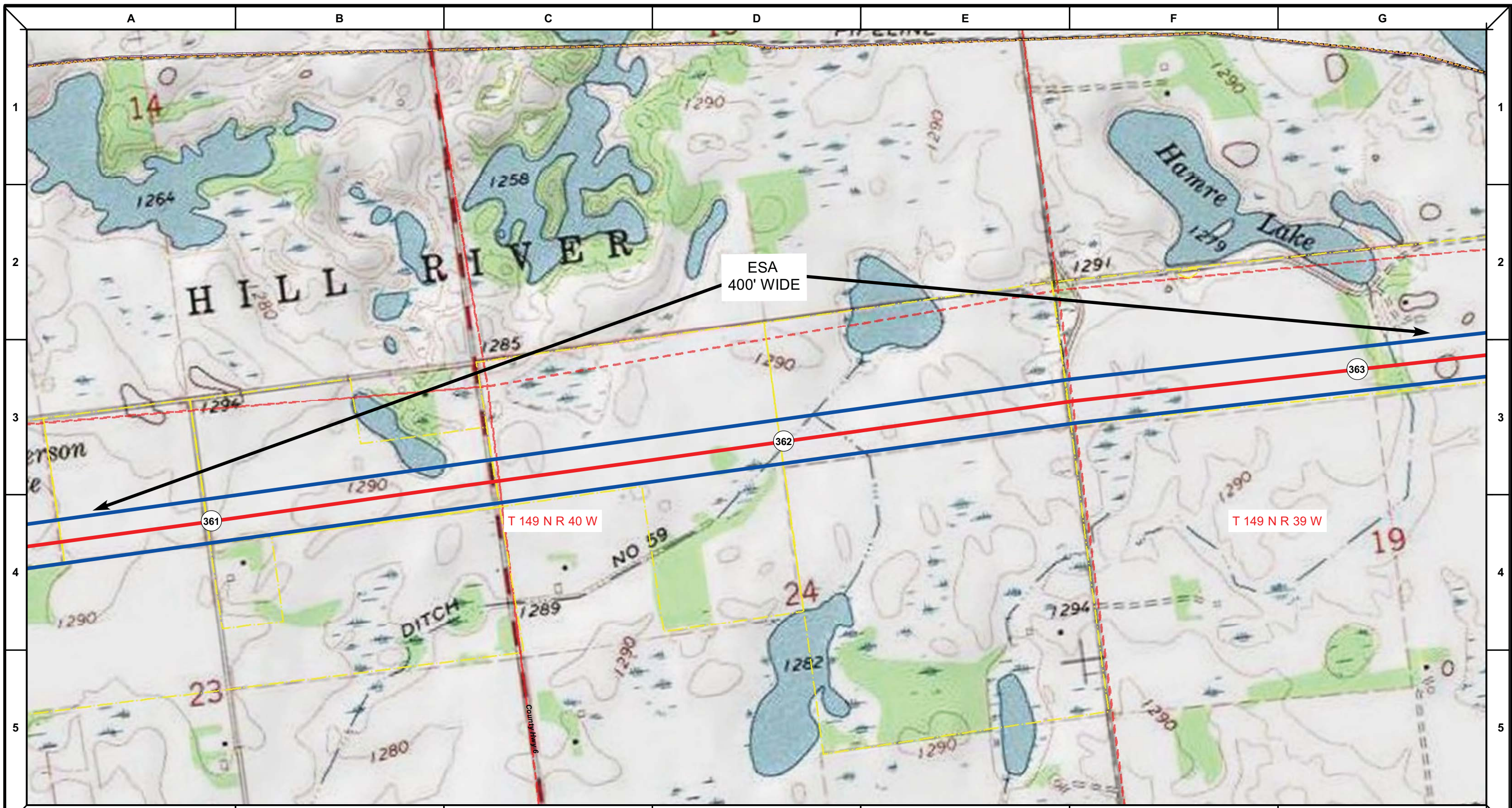
DRAWN	CHECKED	APPROVED	DATE	REV NO.	DESCRIPTION
			1/29/14	2	PUC Update - Revision D-2 Alignment
			12/19/13	1	PUC Update - Revision D Alignment
			10/10/13	0	PUC Submittal

**NORTH DAKOTA PIPELINE COMPANY LLC**

**PROPOSED SANDPIPER  
 PIPELINE PROJECT  
 ROUTE MAP  
 Polk County, MN**

<small>DRAWN:</small> <b>MLB</b>	<small>CHECKED:</small> <b>--</b>
<small>DATE:</small> <b>Jan 30, 2014</b>	<small>SCALE:</small> <b>AS SHOWN</b>

Spread:5 Map: 27 of 123



Proposed Pipeline - Sandpiper	Milepost - Sandpiper	Tract Boundary
Existing Enbridge Pipelines	Potential Block Valve	Facility Boundary
Foreign Pipes	Environmental Survey Area (ESA)	Previously Sited Facility Boundary
Transmission Lines		Section Lines
SPREAD BREAK		

DRAWN	CHECKED	APPROVED	DATE	REV NO.	DESCRIPTION
			1/29/14	2	PUC Update - Revision D-2 Alignment
			12/19/13	1	PUC Update - Revision D Alignment
			10/10/13	0	PUC Submittal

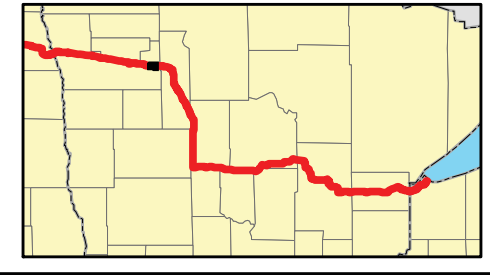
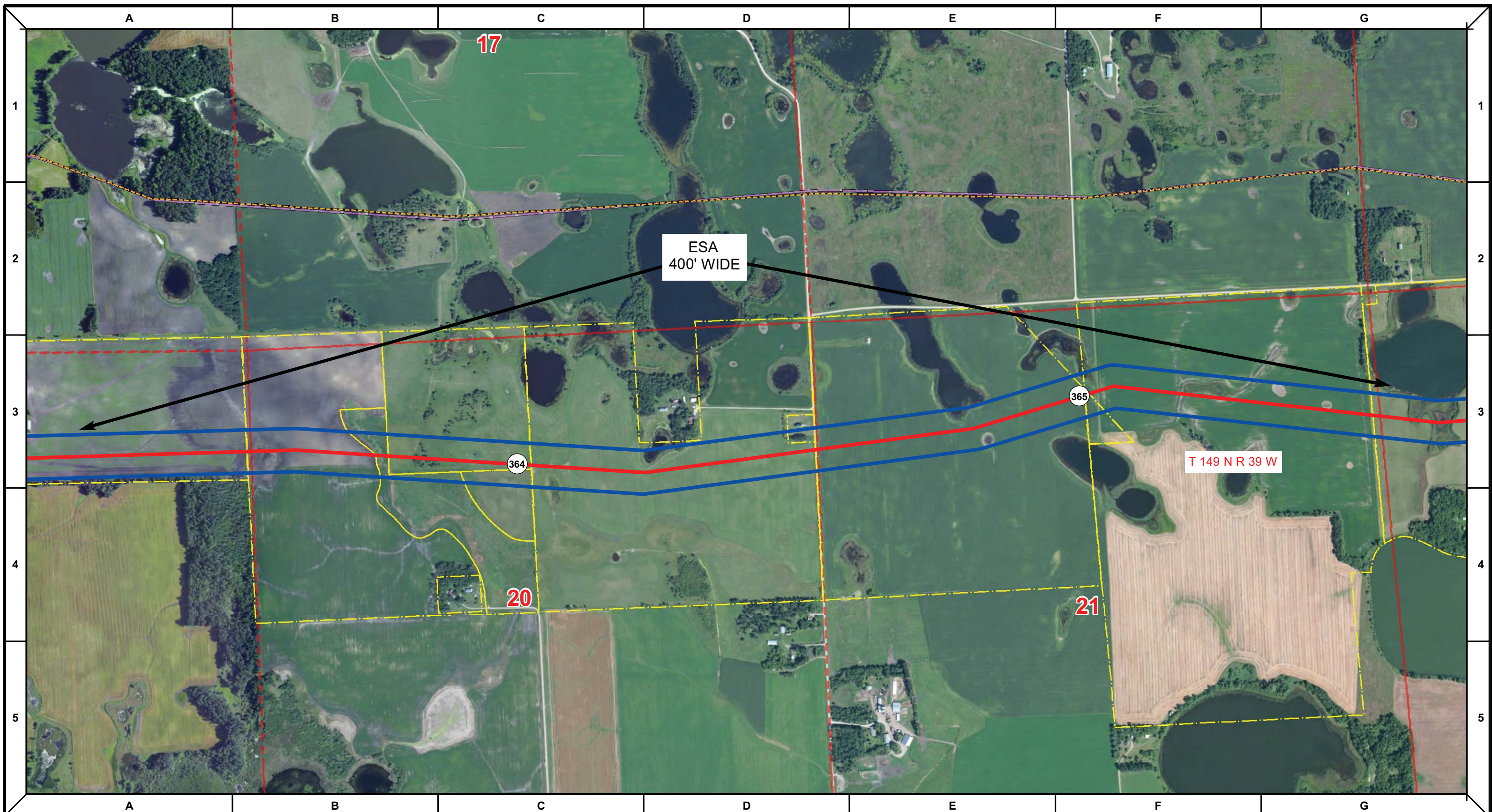
**ENBRIDGE**  
 NORTH DAKOTA PIPELINE COMPANY LLC

**PROPOSED SANDPIPER PIPELINE PROJECT**  
 ROUTE MAP  
 Polk County, MN

DRAWN: <b>MLB</b>	CHECKED: <b>-</b>
DATE: <b>Jan 30, 2014</b>	SCALE: <b>AS SHOWN</b>

Spread:5 Map: 27 of 123





Proposed Pipeline - Sandpiper	Milepost - Sandpiper	Tract Boundary
Existing Enbridge Pipelines	Potential Block Valve	Facility Boundary
Foreign Pipes	Environmental Survey Area (ESA)	Previously Sited Facility Boundary
Transmission Lines		Section Lines
SPREAD BREAK		

500 250 0 500 1,000 Feet

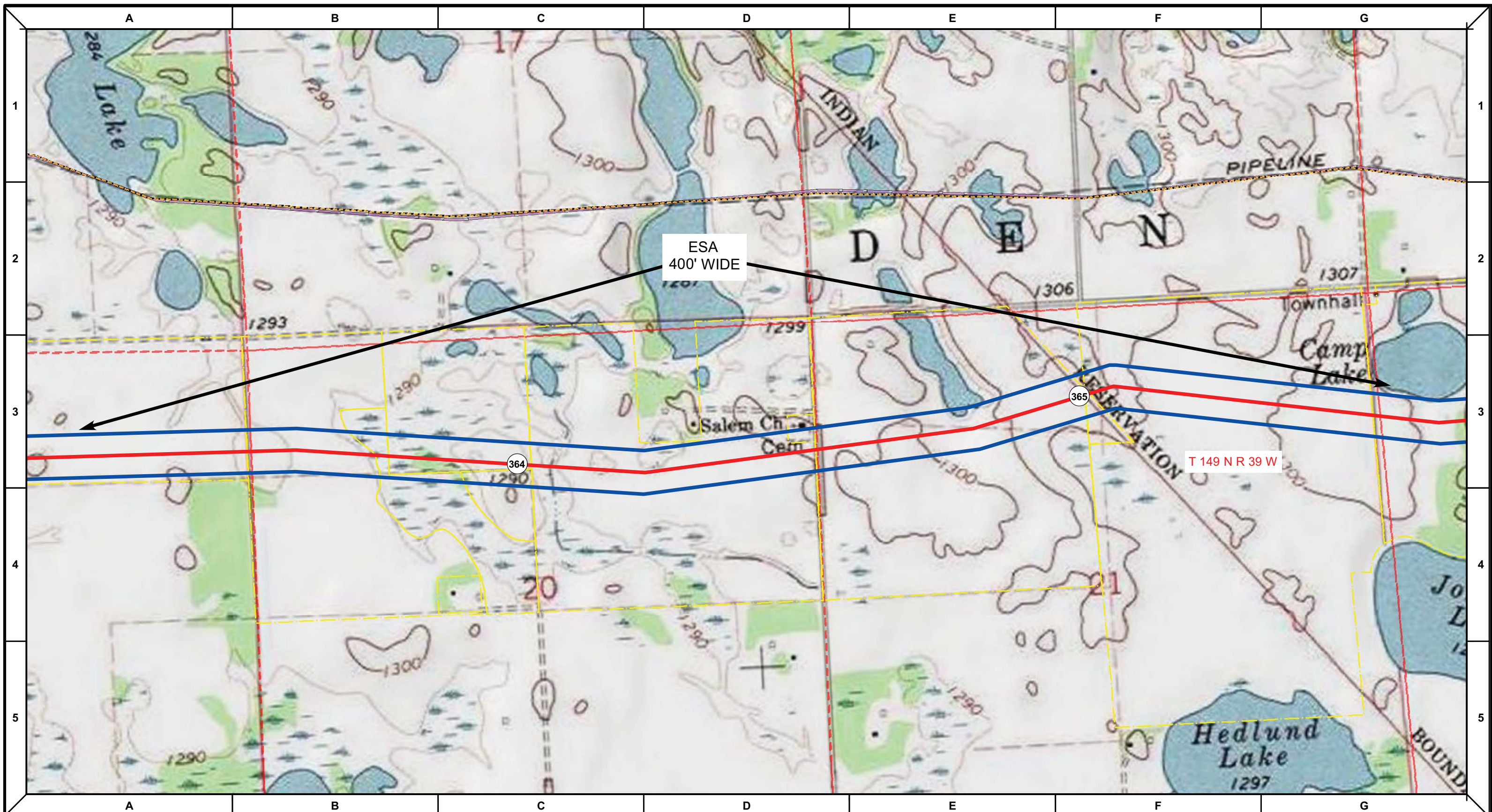
MLB	DATE	REV NO.	DESCRIPTION
	1/29/14	2	PUC Update - Revision D-2 Alignment
	12/19/13	1	PUC Update - Revision D Alignment
	10/10/13	0	PUC Submittal
DRAWN	CHECKED	APPROVED	DESCRIPTION

**NORTH DAKOTA PIPELINE COMPANY LLC**

**PROPOSED SANDPIPER  
 PIPELINE PROJECT  
 ROUTE MAP  
 Polk County, MN**

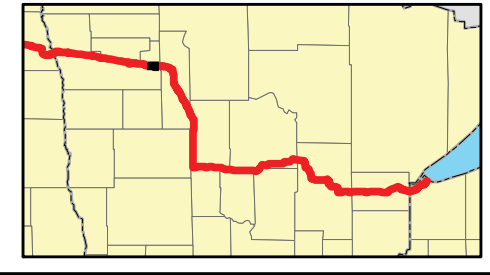
DRAWN: <b>MLB</b>	CHECKED: <b>--</b>
DATE: <b>Jan 30, 2014</b>	SCALE: <b>AS SHOWN</b>

Spread:5      Map: 28 of 123



ESA  
400' WIDE

T 149 N R 39 W



Proposed Pipeline - Sandpiper	Milepost - Sandpiper	Tract Boundary
Existing Enbridge Pipelines	Potential Block Valve	Facility Boundary
Foreign Pipes	Environmental Survey Area (ESA)	Previously Sited Facility Boundary
Transmission Lines		Section Lines
SPREAD BREAK		

N

500 250 0 500 1,000 Feet

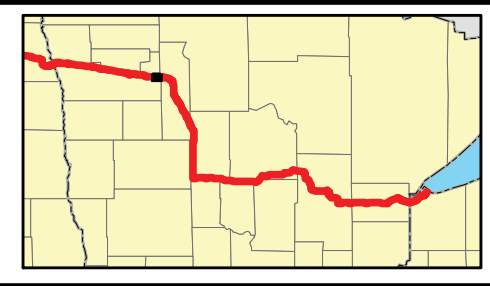
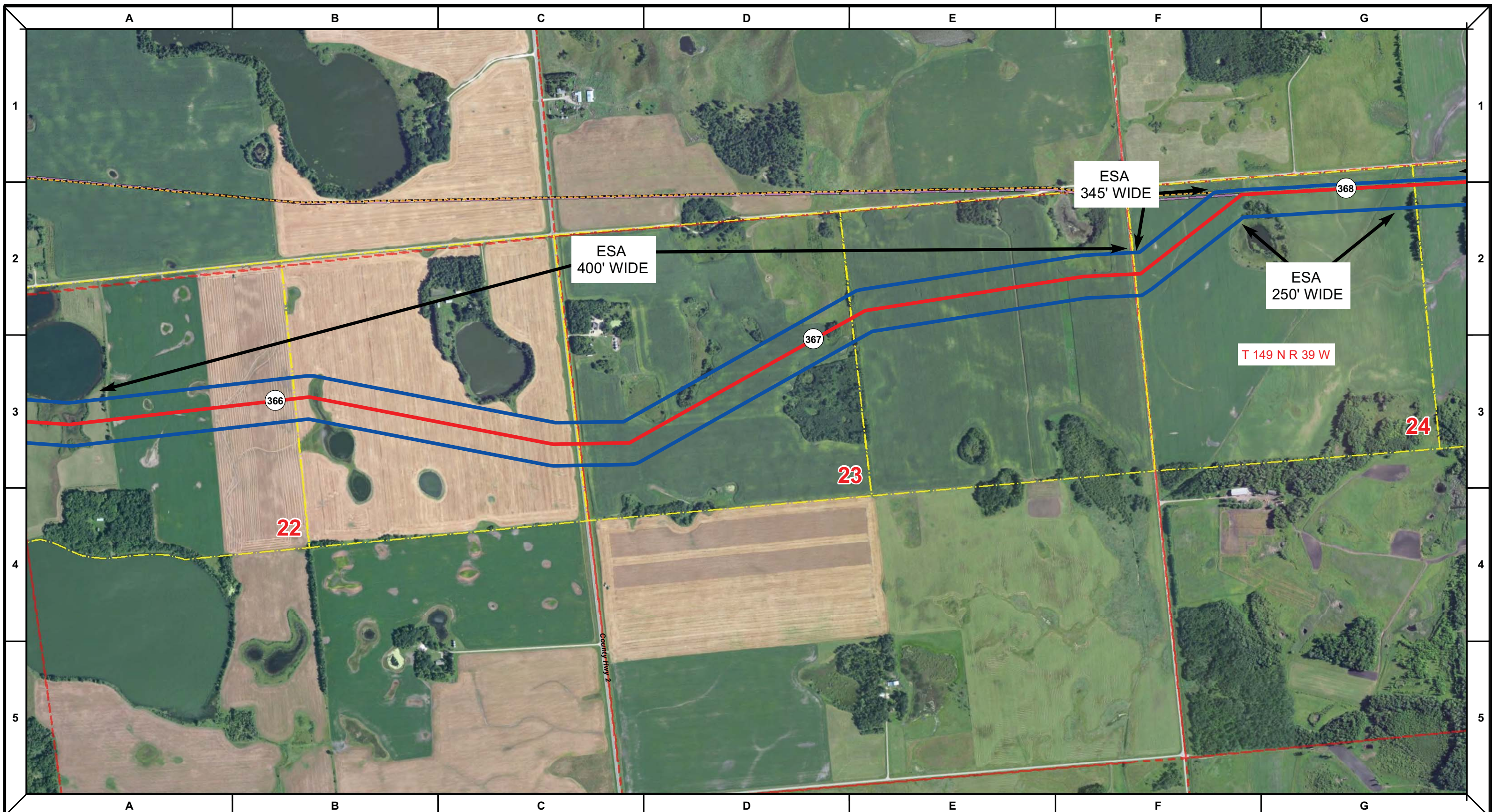
DRAWN	CHECKED	APPROVED	DATE	REV NO.	DESCRIPTION
			1/29/14	2	PUC Update - Revision D-2 Alignment
			12/19/13	1	PUC Update - Revision D Alignment
			10/10/13	0	PUC Submittal

**ENBRIDGE**  
NORTH DAKOTA PIPELINE COMPANY LLC

**PROPOSED SANDPIPER  
PIPELINE PROJECT  
ROUTE MAP  
Polk County, MN**

DRAWN: MLB	CHECKED: --
DATE: Jan 30, 2014	SCALE: AS SHOWN

Spread:5 Map: 28 of 123



Proposed Pipeline - Sandpiper	Milepost - Sandpiper	Tract Boundary
Existing Enbridge Pipelines	Potential Block Valve	Facility Boundary
Foreign Pipes	Environmental Survey Area (ESA)	Previously Sited Facility Boundary
Transmission Lines		Section Lines
SPREAD BREAK		

500 250 0 500 1,000 Feet

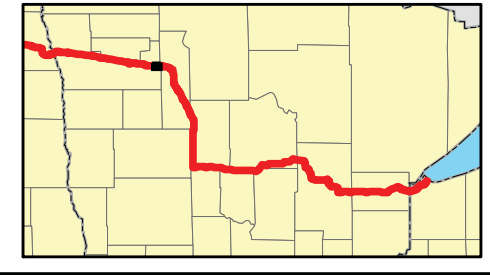
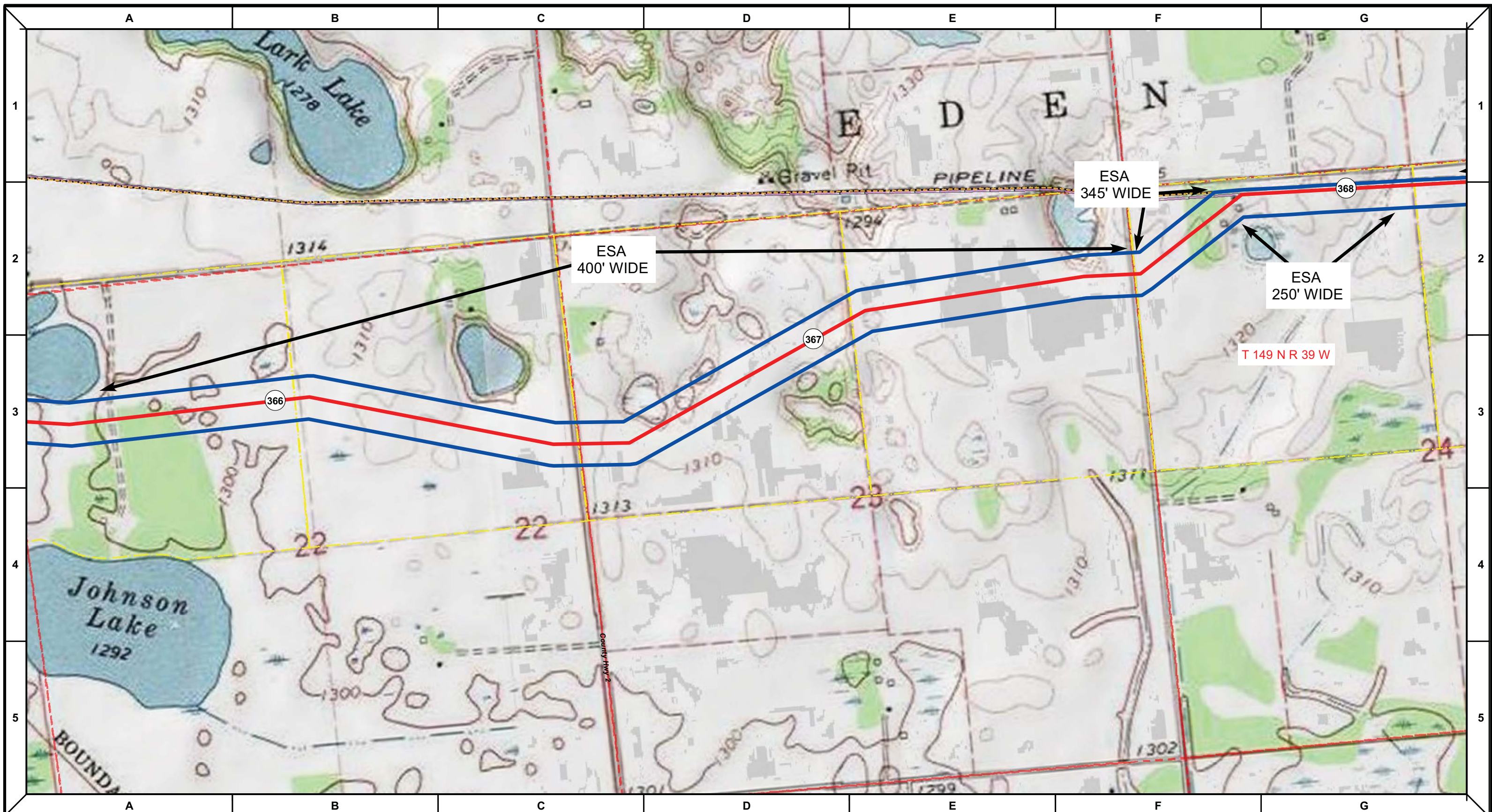
DRAWN	CHECKED	APPROVED	DATE	REV NO.	DESCRIPTION
			1/29/14	2	PUC Update - Revision D-2 Alignment
			12/19/13	1	PUC Update - Revision D Alignment
			10/10/13	0	PUC Submittal

**NORTH DAKOTA PIPELINE COMPANY LLC**

**PROPOSED SANDPIPER  
 PIPELINE PROJECT  
 ROUTE MAP  
 Polk County, MN**

DRAWN: <i>MLB</i>	CHECKED: <i>--</i>
DATE: <i>Jan 30, 2014</i>	SCALE: <i>AS SHOWN</i>

Spread:5      Map: 29 of 123



Proposed Pipeline - Sandpiper	Milepost - Sandpiper	Tract Boundary
Existing Enbridge Pipelines	Potential Block Valve	Facility Boundary
Foreign Pipes	Environmental Survey Area (ESA)	Previously Sited Facility Boundary
Transmission Lines		Section Lines
SPREAD BREAK		

500 250 0 500 1,000 Feet

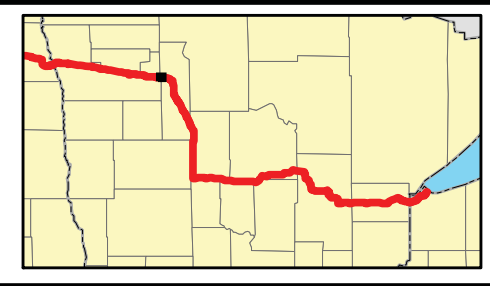
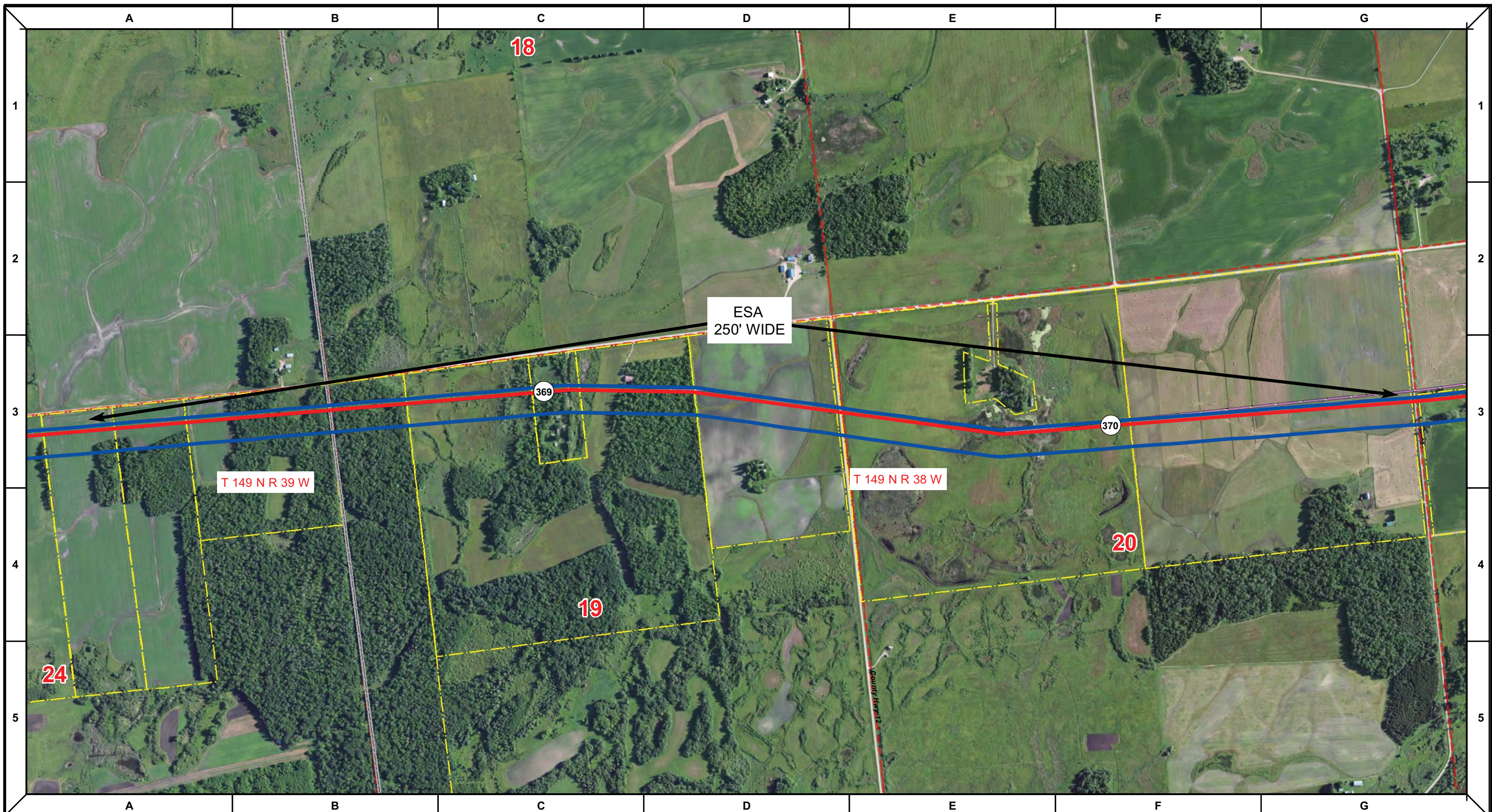
DRAWN	CHECKED	APPROVED	DATE	REV NO.	DESCRIPTION
			1/29/14	2	PUC Update - Revision D-2 Alignment
			12/19/13	1	PUC Update - Revision D Alignment
			10/10/13	0	PUC Submittal

**NORTH DAKOTA PIPELINE COMPANY LLC**

**PROPOSED SANDPIPER PIPELINE PROJECT**  
**ROUTE MAP**  
**Polk County, MN**

DRAWN: <b>MLB</b>	CHECKED: <b>-</b>
DATE: <b>Jan 30, 2014</b>	SCALE: <b>AS SHOWN</b>

Spread:5 Map: 29 of 123



Proposed Pipeline - Sandpiper	Milepost - Sandpiper	Tract Boundary
Existing Enbridge Pipelines	Potential Block Valve	Facility Boundary
Foreign Pipes	Environmental Survey Area (ESA)	Previously Sited Facility Boundary
Transmission Lines		Section Lines
SPREAD BREAK		

500 250 0 500 1,000 Feet

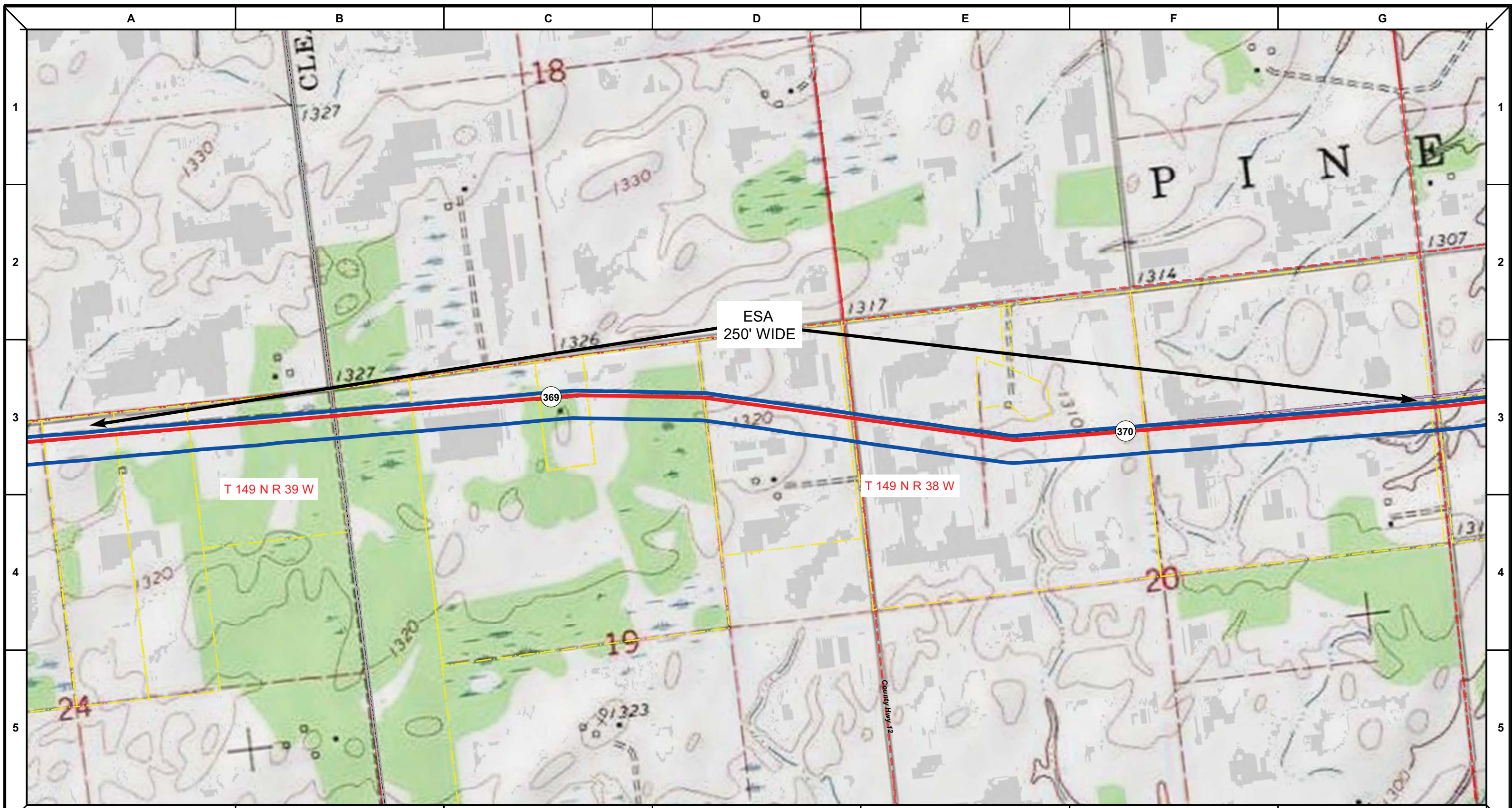
DRAWN	CHECKED	APPROVED	DATE	REV NO.	DESCRIPTION
			1/29/14	2	PUC Update - Revision D-2 Alignment
			12/19/13	1	PUC Update - Revision D Alignment
			10/10/13	0	PUC Submittal

**NORTH DAKOTA PIPELINE COMPANY LLC**

**PROPOSED SANDPIPER PIPELINE PROJECT**  
**ROUTE MAP**  
 Polk & Clearwater County, MN

DRAWN: <i>MLB</i>	CHECKED: <i>-</i>
DATE: <i>Jan 30, 2014</i>	SCALE: <i>AS SHOWN</i>

Spread:5 Map: 30 of 123



Proposed Pipeline - Sandpiper	Milepost - Sandpiper	Tract Boundary
Existing Enbridge Pipelines	Potential Block Valve	Facility Boundary
Foreign Pipes	Environmental Survey Area (ESA)	Previously Sited Facility Boundary
Transmission Lines		Section Lines
SPREAD BREAK		

500 250 0 500 1,000 Feet

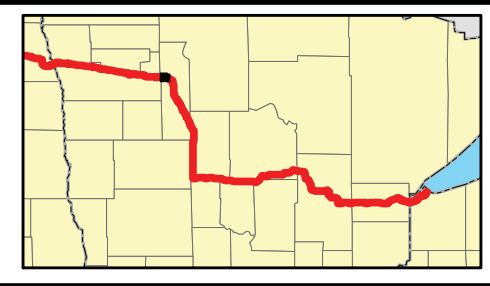
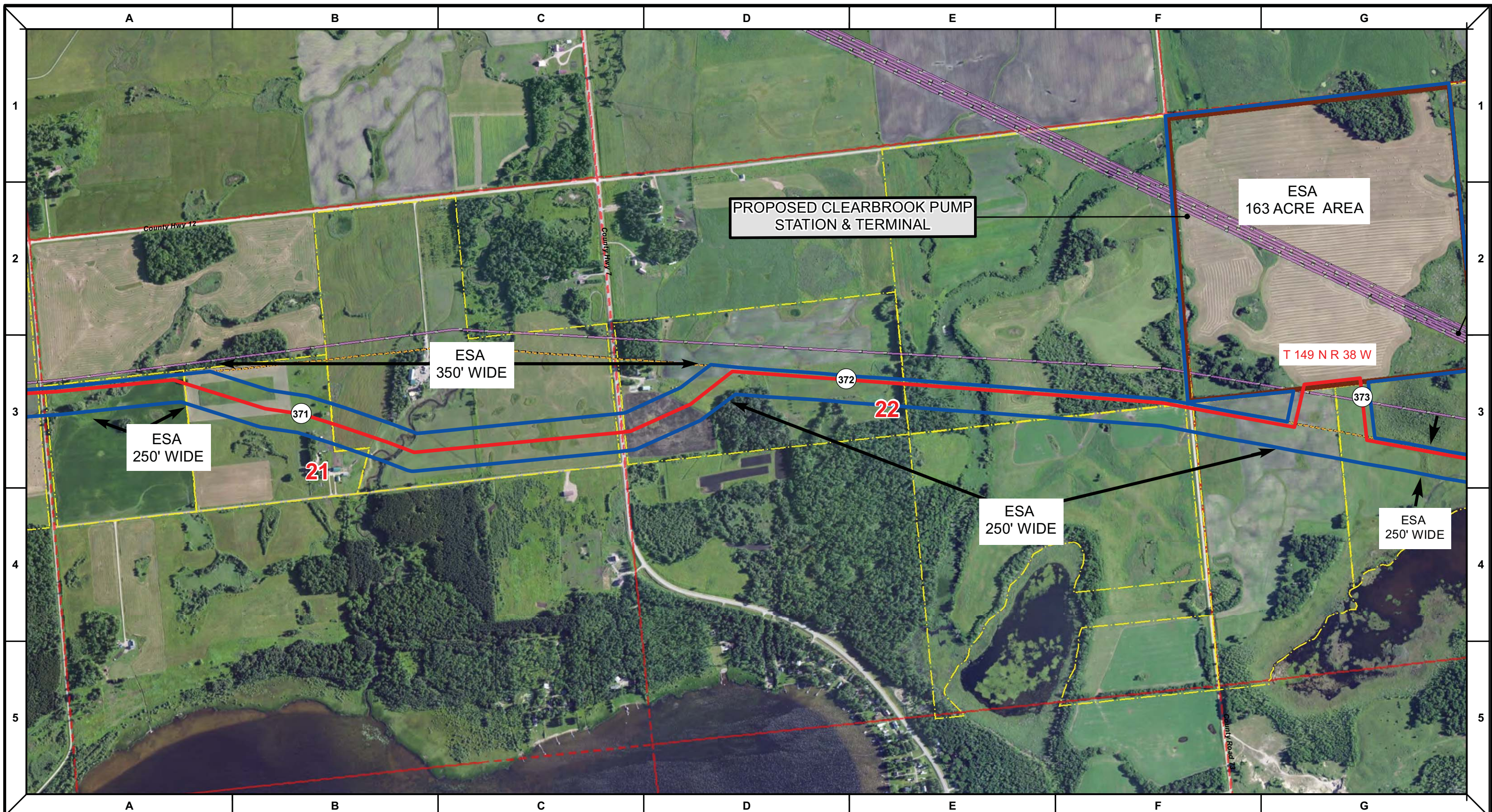
DRAWN	CHECKED	APPROVED	DATE	REV NO.	DESCRIPTION
			1/29/14	2	PUC Update - Revision D-2 Alignment
			12/19/13	1	PUC Update - Revision D Alignment
			10/10/13	0	PUC Submittal

**NORTH DAKOTA PIPELINE COMPANY LLC**

**PROPOSED SANDPIPER PIPELINE PROJECT**  
**ROUTE MAP**  
 Polk & Clearwater County, MN

DRAWN: <b>MLB</b>	CHECKED: <b>-</b>
DATE: <b>Jan 30, 2014</b>	SCALE: <b>AS SHOWN</b>

Spread:5      Map: 30 of 123



Proposed Pipeline - Sandpiper	Milepost - Sandpiper	Tract Boundary
Existing Enbridge Pipelines	Potential Block Valve	Facility Boundary
Foreign Pipes	Environmental Survey Area (ESA)	Previously Sited Facility Boundary
Transmission Lines		Section Lines
SPREAD BREAK		

500 250 0 500 1,000 Feet

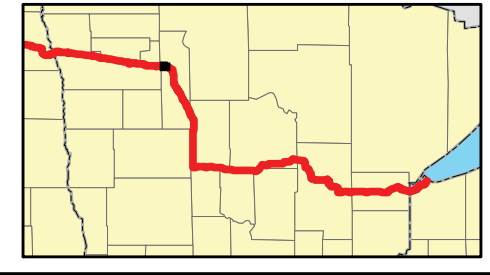
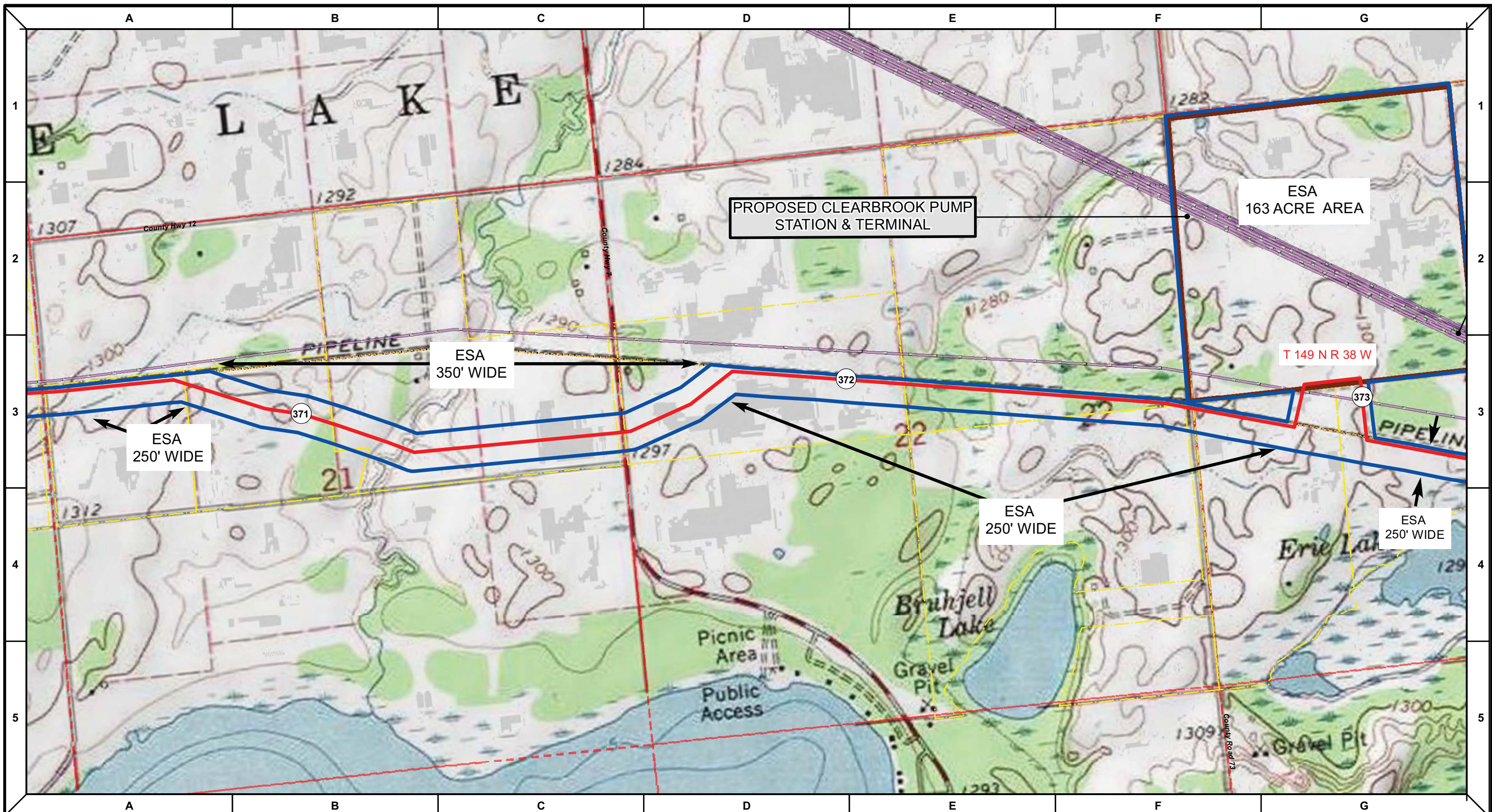
DRAWN	CHECKED	APPROVED	DATE	REV NO.	DESCRIPTION
			1/29/14	2	PUC Update - Revision D-2 Alignment
			12/19/13	1	PUC Update - Revision D Alignment
			10/10/13	0	PUC Submittal

**NORTH DAKOTA PIPELINE COMPANY LLC**

**PROPOSED SANDPIPER PIPELINE PROJECT ROUTE MAP**  
 Clearwater County, MN

DRAWN: <b>MLB</b>	CHECKED: <b>-</b>
DATE: <b>Jan 30, 2014</b>	SCALE: <b>AS SHOWN</b>

Spread:5 Map: 31 of 123



Proposed Pipeline - Sandpiper	Milepost - Sandpiper	Tract Boundary
Existing Enbridge Pipelines	Potential Block Valve	Facility Boundary
Foreign Pipes	Environmental Survey Area (ESA)	Previously Sited Facility Boundary
Transmission Lines		Section Lines
SPREAD BREAK		

500 250 0 500 1,000 Feet

DRAWN	CHECKED	APPROVED	DATE	REV NO.	DESCRIPTION
			1/29/14	2	PUC Update - Revision D-2 Alignment
			12/19/13	1	PUC Update - Revision D Alignment
			10/10/13	0	PUC Submittal

**ENBRIDGE**  
NORTH DAKOTA PIPELINE COMPANY LLC

**PROPOSED SANDPIPER  
PIPELINE PROJECT  
ROUTE MAP  
Clearwater County, MN**

DRAWN: <b>MLB</b>	CHECKED: <b>-</b>
DATE: <b>Jan 30, 2014</b>	SCALE: <b>AS SHOWN</b>

Spread:5 Map: 31 of 123