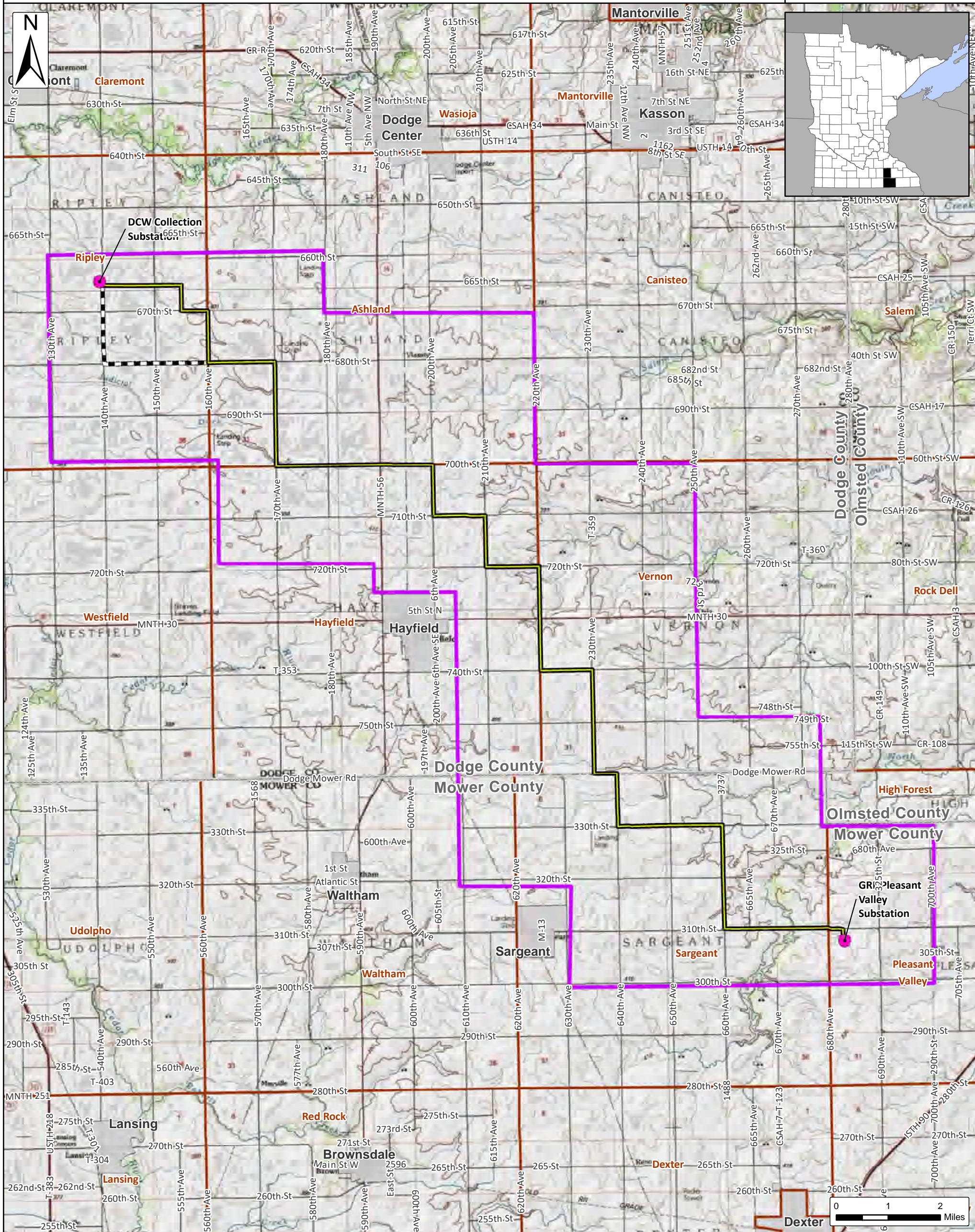


Dodge County Wind, LLC

Figure 3.5 - Project Notice Area

Dodge County and Mower County, Minnesota

Issue Date:
1/3/2022



- Transmission Line Notice Area
- Substation
- City/Village
- Anticipated Alignment
- Townships
- Alternate Segment
- Counties



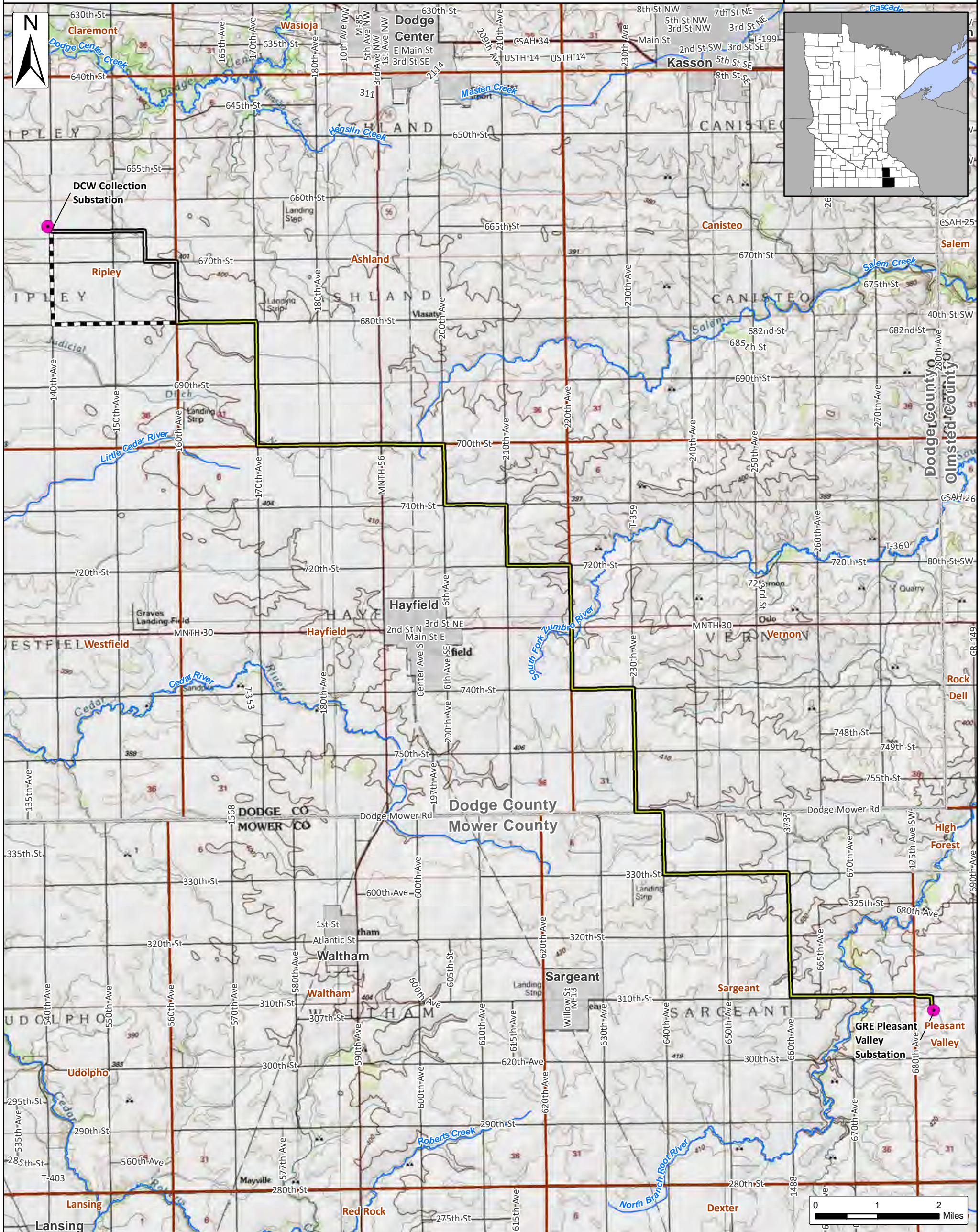
SOURCE: USGS TOPOGRAPHIC QUADRANGLES 1:24,000

Dodge County Wind, LLC

Figure 5.1 - Overview with Route Segment Comparisons

Dodge County and Mower County, Minnesota

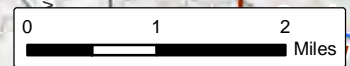
Issue Date:
12/1/2021



- Substation
- Proposed Alignment
- Alternate Segment
- Segment A
- ~ Main Watercourses (NHD)
- Main Waterbodies (NHD)
- City/Village
- Townships
- Counties



SOURCE: USGS TOPOGRAPHIC QUADRANGLES 1:24,000

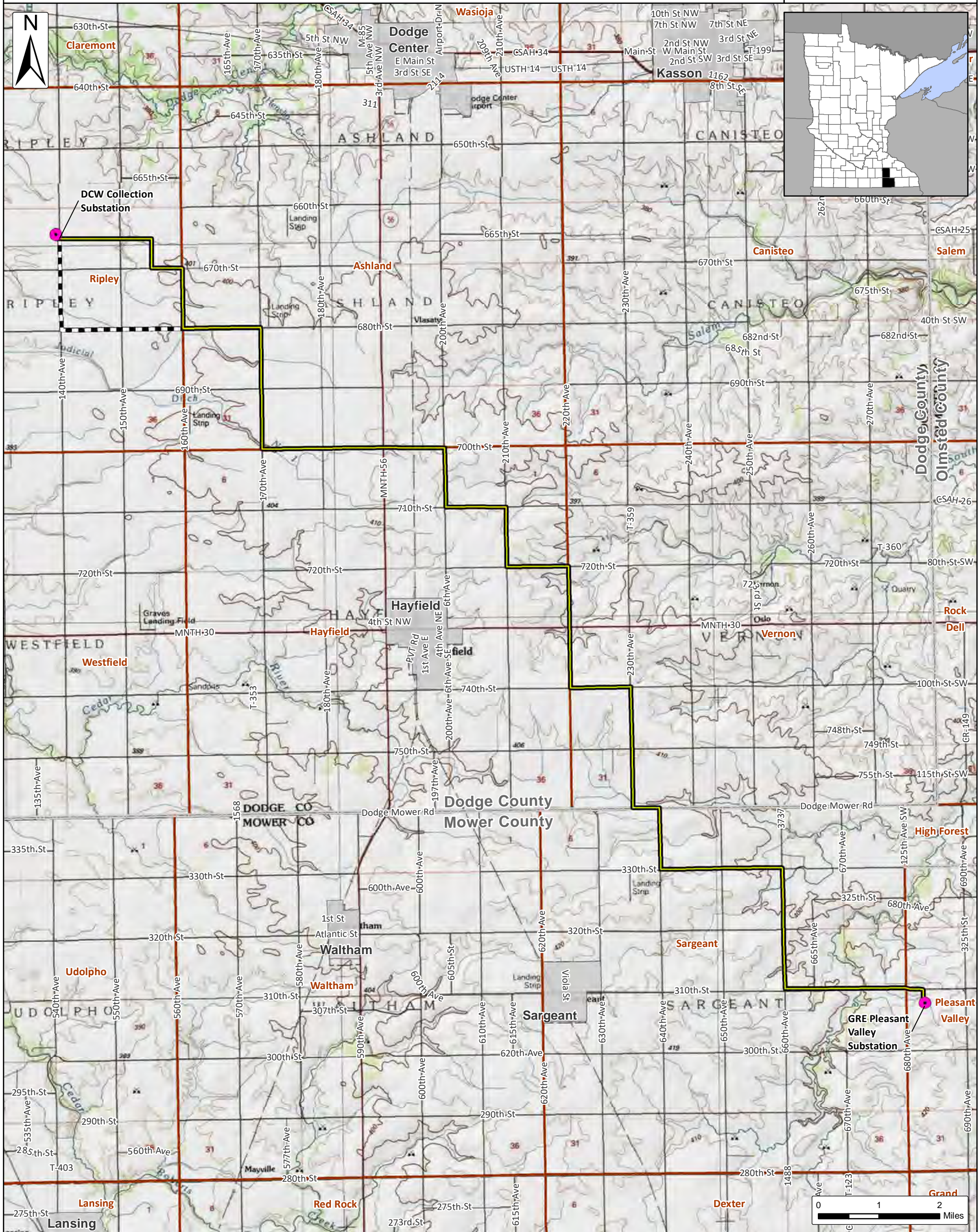


Dodge County Wind, LLC

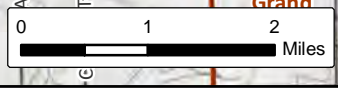
Issue Date:
12/1/2021

Figure 5.2 - Topographic Map of Project Area

Dodge County and Mower County, Minnesota



- Substation
- Proposed Alignment
- Alternate Segment
- City/Village
- Townships
- Counties



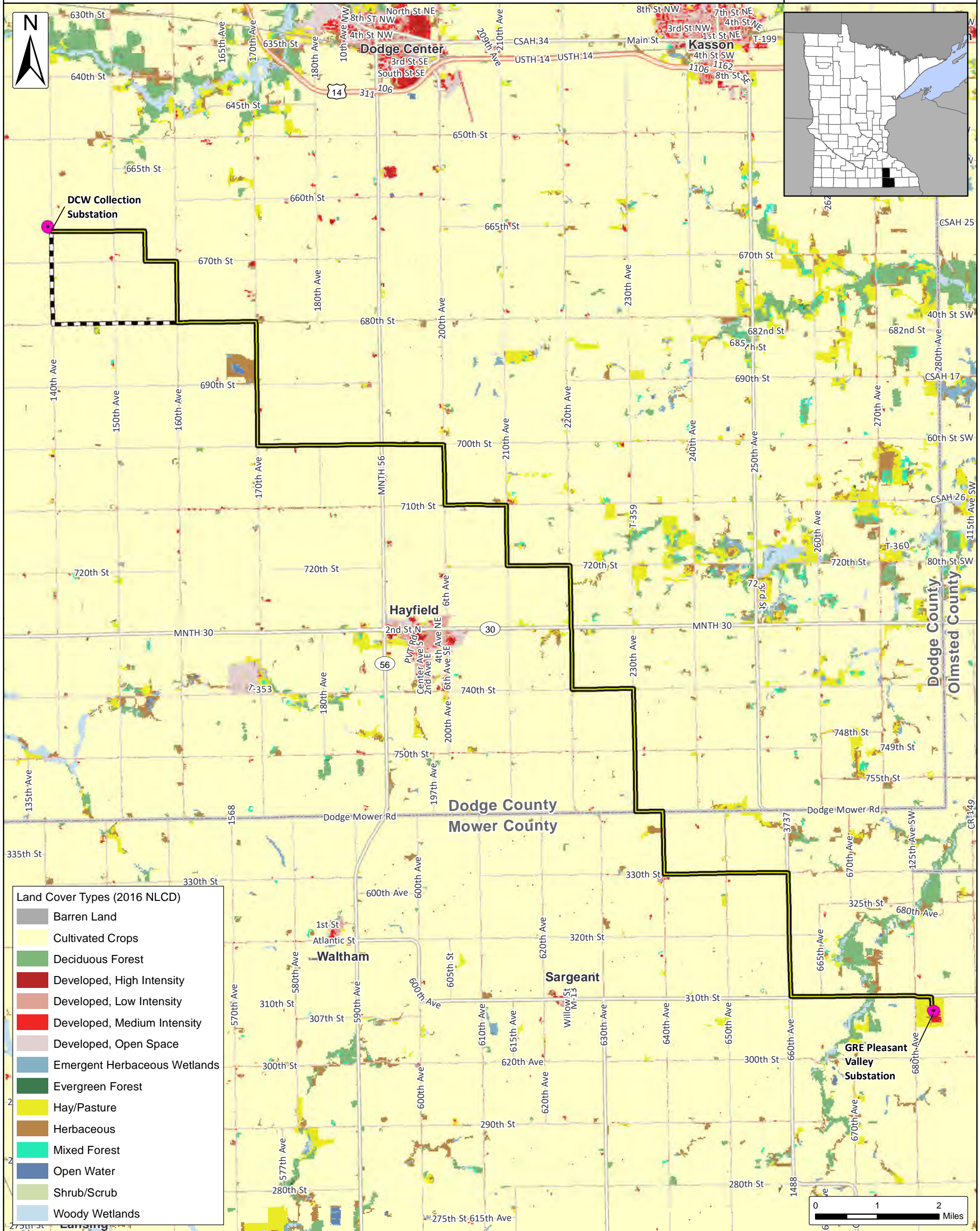
SOURCE: USGS TOPOGRAPHIC QUADRANGLES 1:24,000

Dodge County Wind, LLC

Figure 5.3 - Land Cover - NLCD

Dodge County and Mower County, Minnesota

Issue Date:
11/23/2021



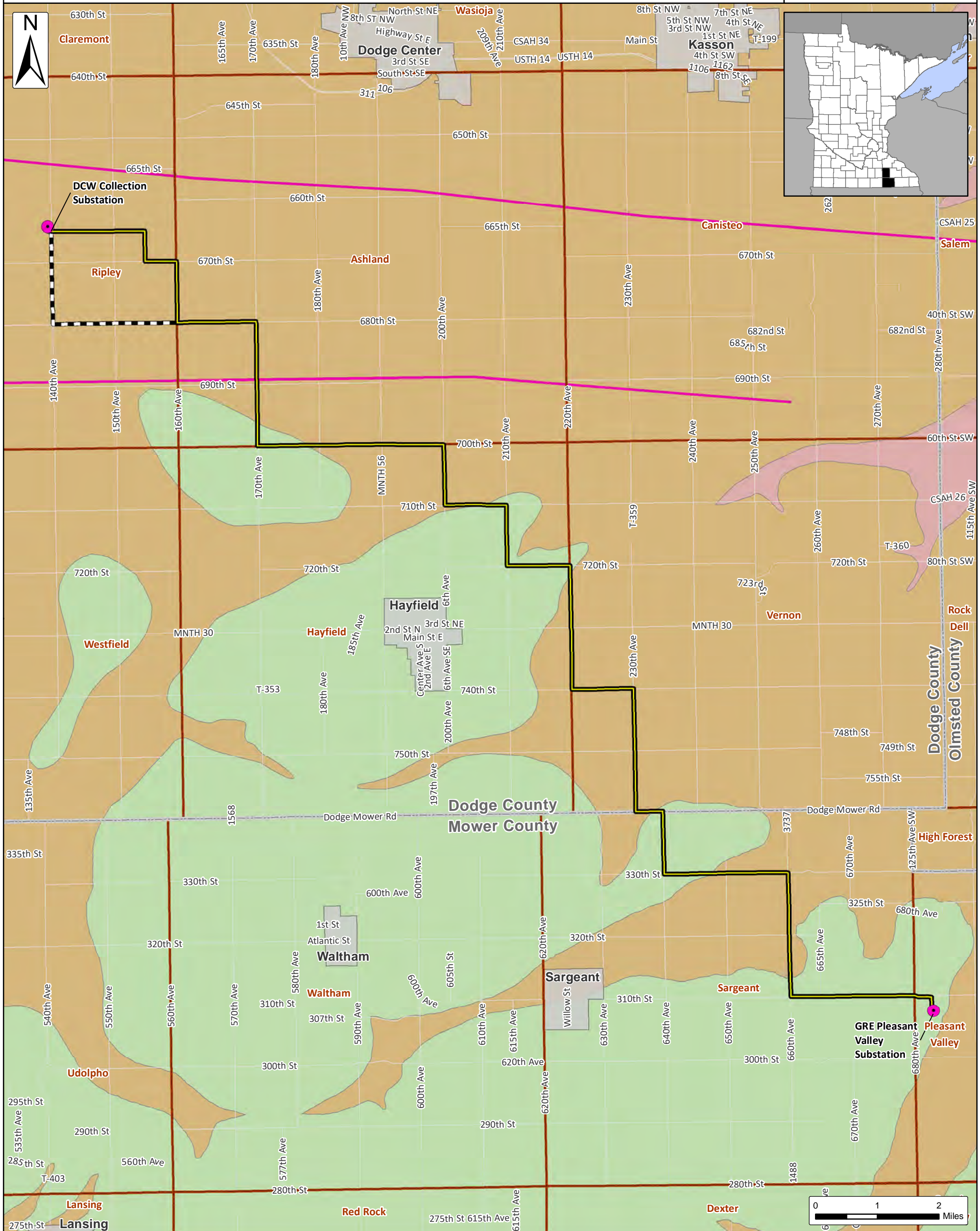
SOURCE: USGS NATIONAL LAND COVER DATABASE 2016

Dodge County Wind, LLC

Issue Date:
11/23/2021

Figure 5.4 - Bedrock Geology

Dodge County and Mower County, Minnesota



Concealed Dike Anomaly (MGS)	Substation	City/Village
Bedrock Geology (MGS)	Proposed Alignment	Townships
Devonian-middle	Alternate Segment White	Counties
Ordovician-middle and upper; Decorah, Plattville, Glenwood, St Peter		
Ordovician-upper; Includes Winnipeg and Red River Fms in NW MN		

SOURCE: MINNESOTA GEOLOGICAL SURVEY

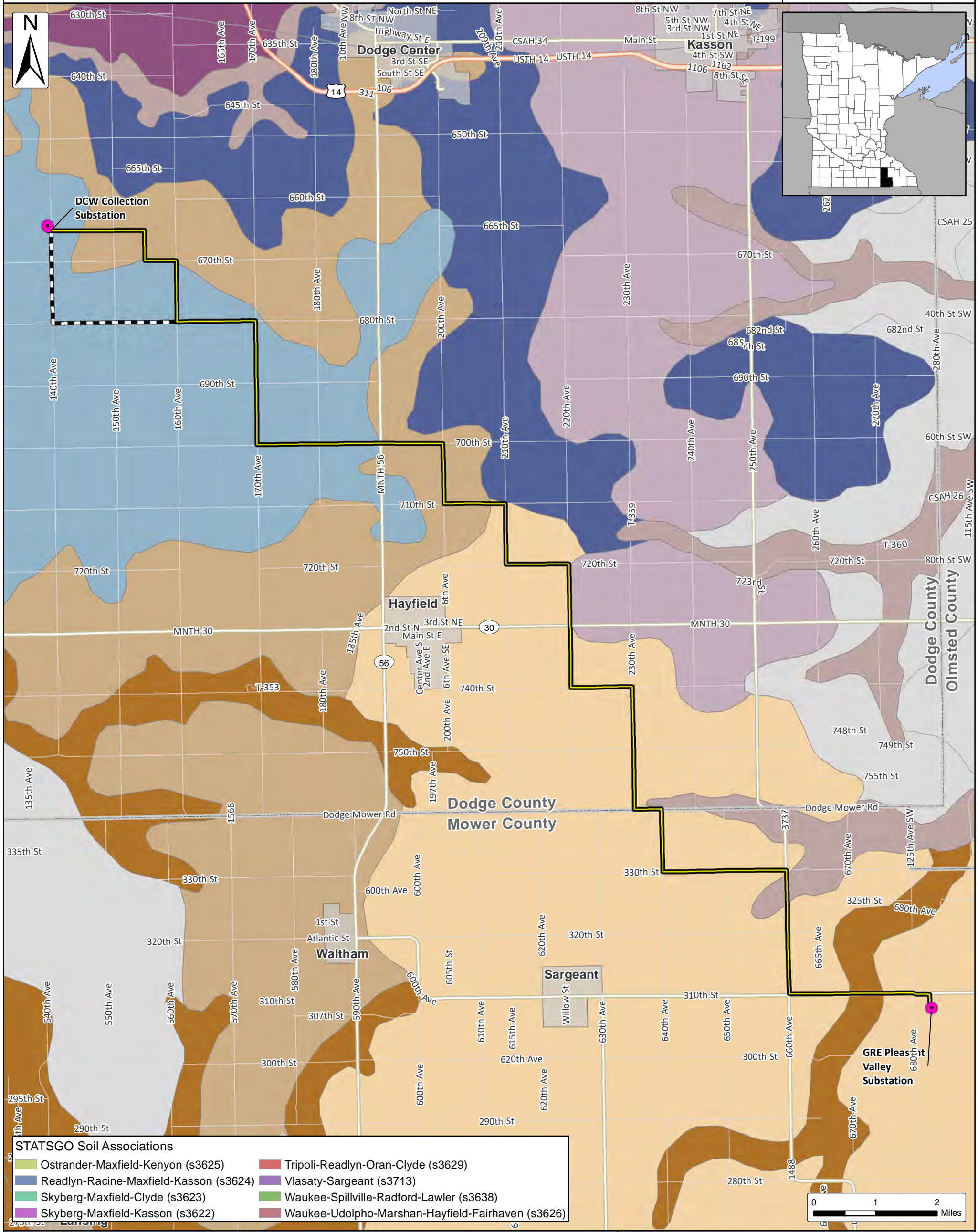


Dodge County Wind, LLC

Issue Date:
11/23/2021

Figure 5.5 - Soils

Dodge County and Mower County, Minnesota



STATSGO Soil Associations

Ostrander-Maxfield-Kenyon (s3625)	Tripoli-Readlyn-Oran-Clyde (s3629)
Readlyn-Racine-Maxfield-Kasson (s3624)	Vlasaty-Sargeant (s3713)
Skyberg-Maxfield-Clyde (s3623)	Waukee-Spillville-Radford-Lawler (s3638)
Skyberg-Maxfield-Kasson (s3622)	Waukee-Udolpho-Marshan-Hayfield-Fairhaven (s3626)

- Substation
- Proposed Alignment
- Alternate Segment White
- City/Village
- Counties



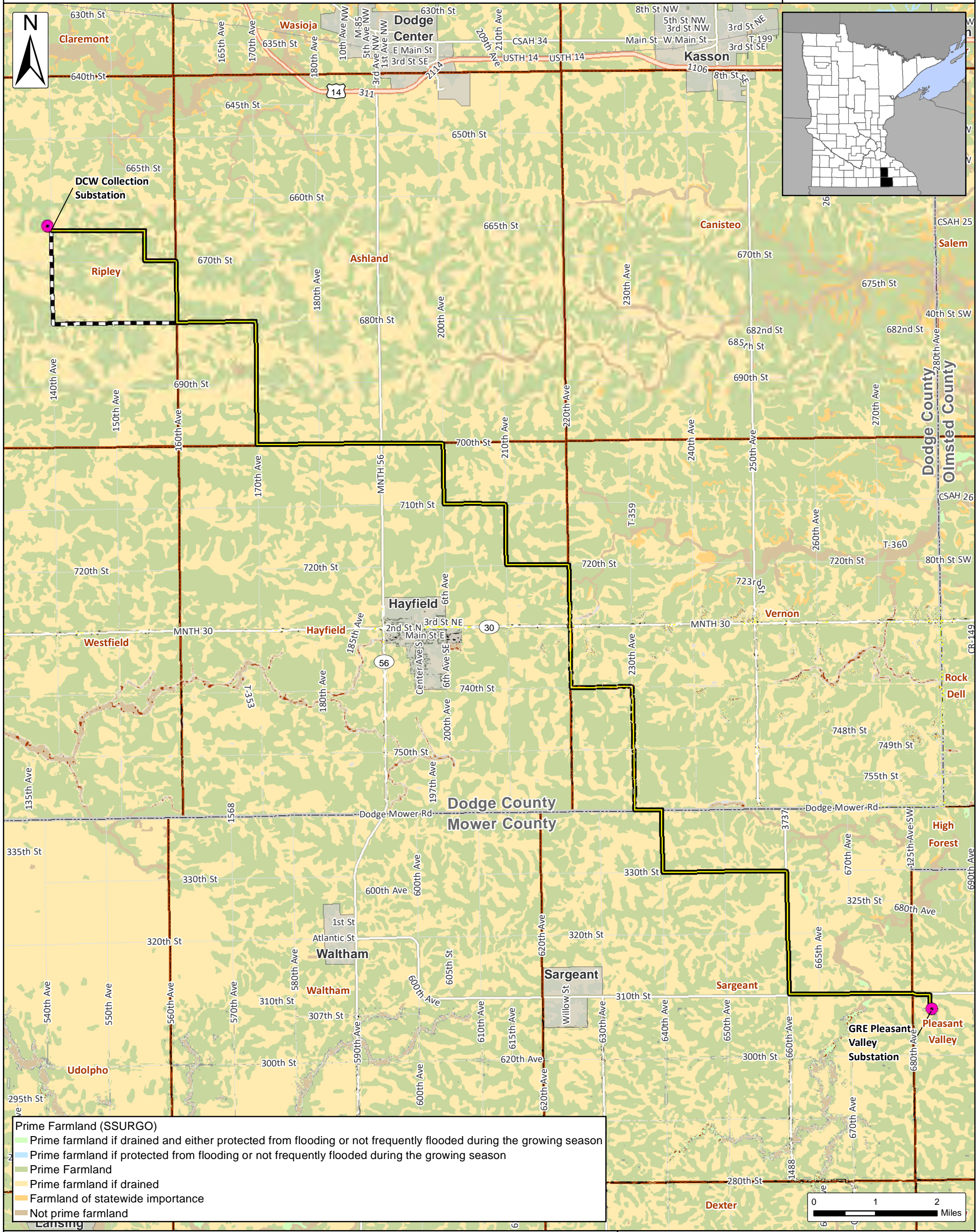
SOURCE: NRCS STATSGO SOIL ASSOCIATIONS

Dodge County Wind, LLC

Issue Date:
10/21/2021

Figure 5.6 - Prime Farmland

Dodge County and Mower County, Minnesota



● Substation
 Proposed Alignment
 Alternate Segment White
 City/Village
 Townships
 Counties



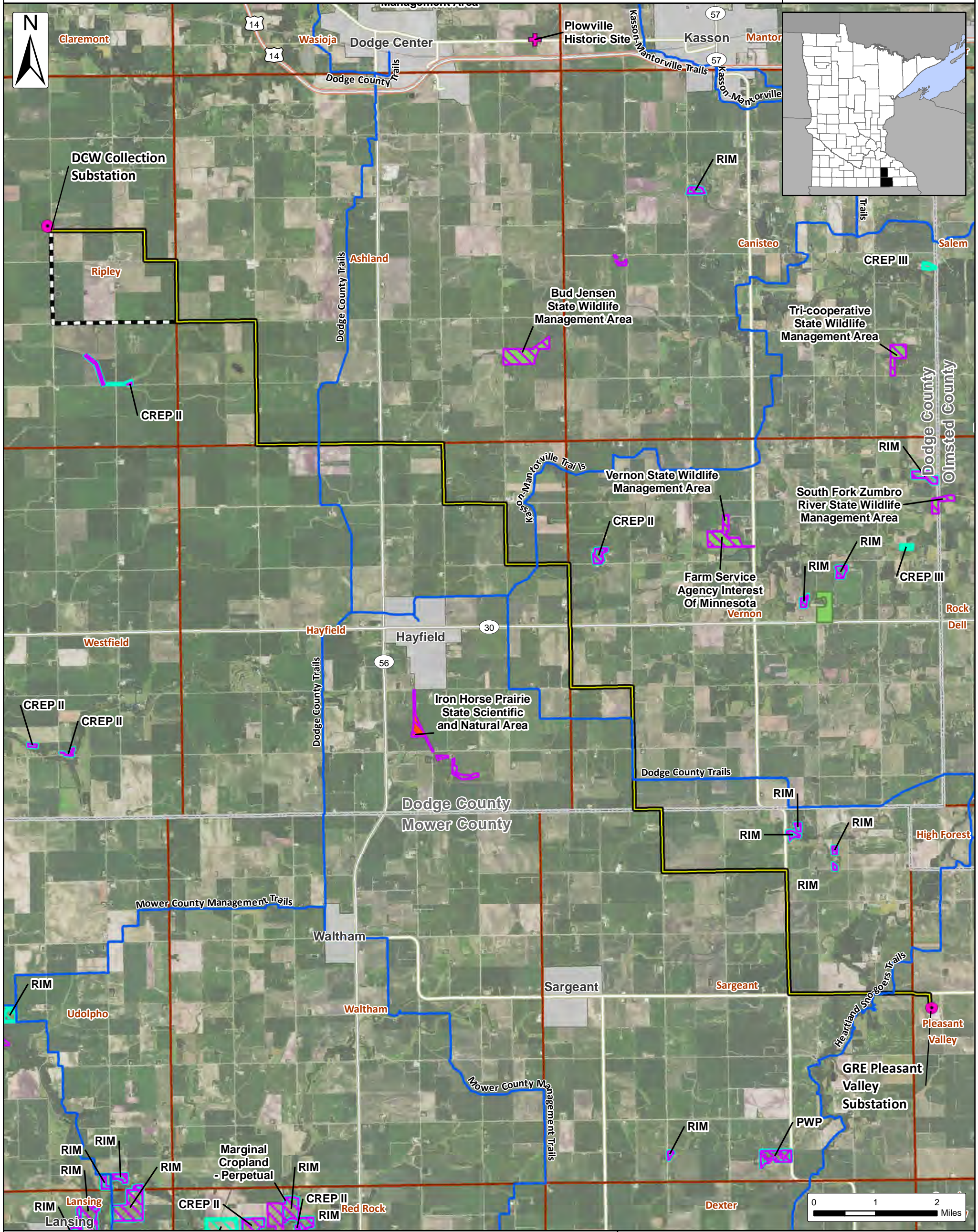
SOURCE: NRCS SSURGO SOILS DATA

Dodge County Wind, LLC

Figure 5.7 - Public Land Ownership and Recreation

Dodge County and Mower County, Minnesota

Issue Date:
11/23/2021



- Snowmobile Trails (MNDNR)
- State Funded Conservation Easements (RIM Reserve, BWSR)
- ▨ Protected Lands (USGS)
- ▨ Wildlife Management Areas (MNDNR)
- ▨ Scientific and Natural Area Units (MNDNR)
- Substation
- Proposed Alignment
- Alternate Segment White
- City/Village
- Townships
- Counties

CREP (I & II): Conservation Reserve Enhancement Program
 WRP: Wetland Reserve Program
 PWP: Permanent Wetland Preserve

SOURCE: USDA NAIP IMAGERY 2019

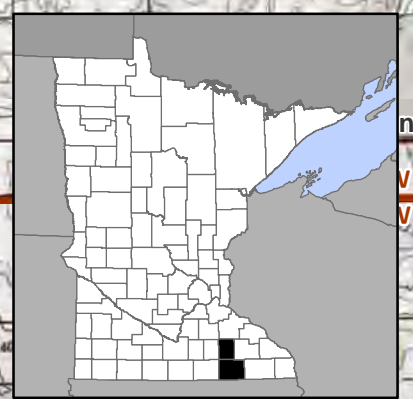
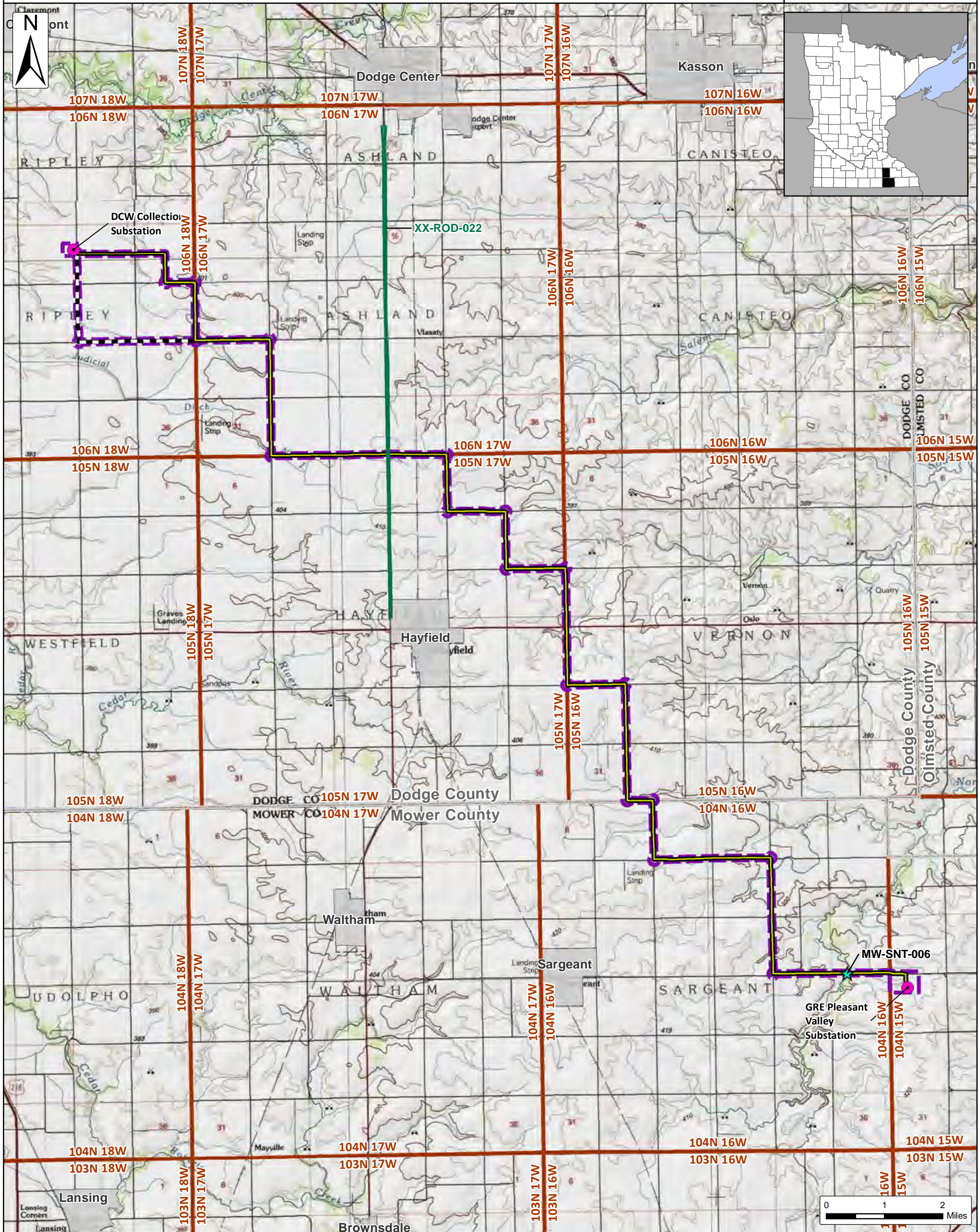


Dodge County Wind, LLC

Issue Date:
12/1/2021

Figure 5.8 - Cultural

Dodge County and Mower County, Minnesota



- ★ Architectural Resource
- Architectural Resource
- Route
- Substation
- Proposed Alignment
- Alternate Segment White
- City/Village
- Townships
- Counties

ARCHAEOLOGICAL SITES
REDACTED PER 54 U.S.C. 307103
SOURCE: USGS TOPOGRAPHIC
QUADRANGLES 1:24,000

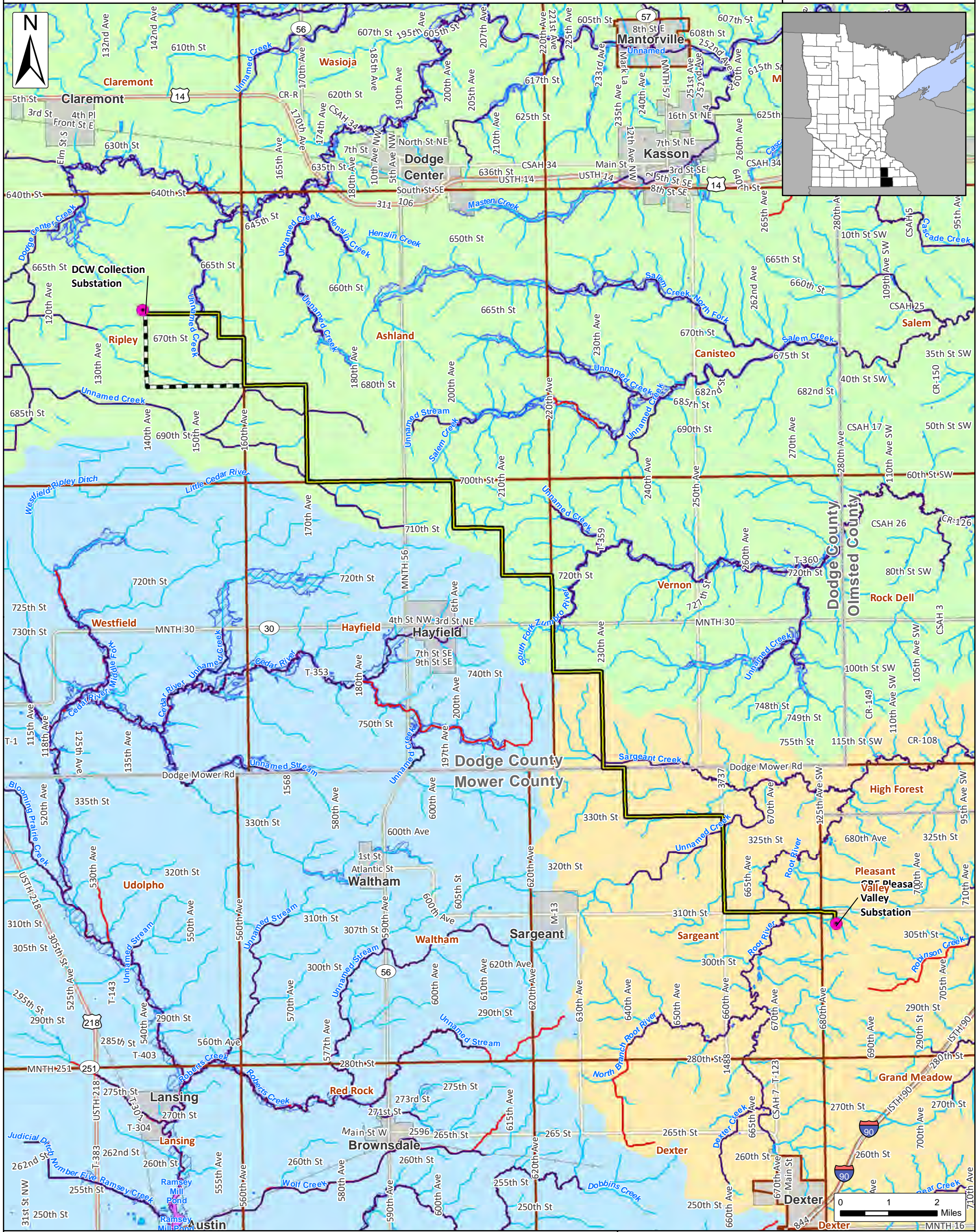


Dodge County Wind, LLC

Issue Date:
11/23/2021

Figure 5.9 - Surface Waters and Floodplains

Dodge County and Mower County, Minnesota



Substation	Impaired Waters (MPCA)	Floodplain (FEMA & Dodge County/MNDNR)
Proposed Alignment	Buffer Protection Ditches (MN DNR)	City/Village
Alternate Segment White	Buffer Protection Basins (MN DNR)	Townships
	Public Water Basins (PWI)	Counties
	Public Watercourses (PWI)	Watershed (NHD- HUC8)
	Watercourses (NHD)	Root River
	Waterbodies (NHD)	Upper Cedar River
		Zumbro River

SOURCE: NHD WATERSHEDS

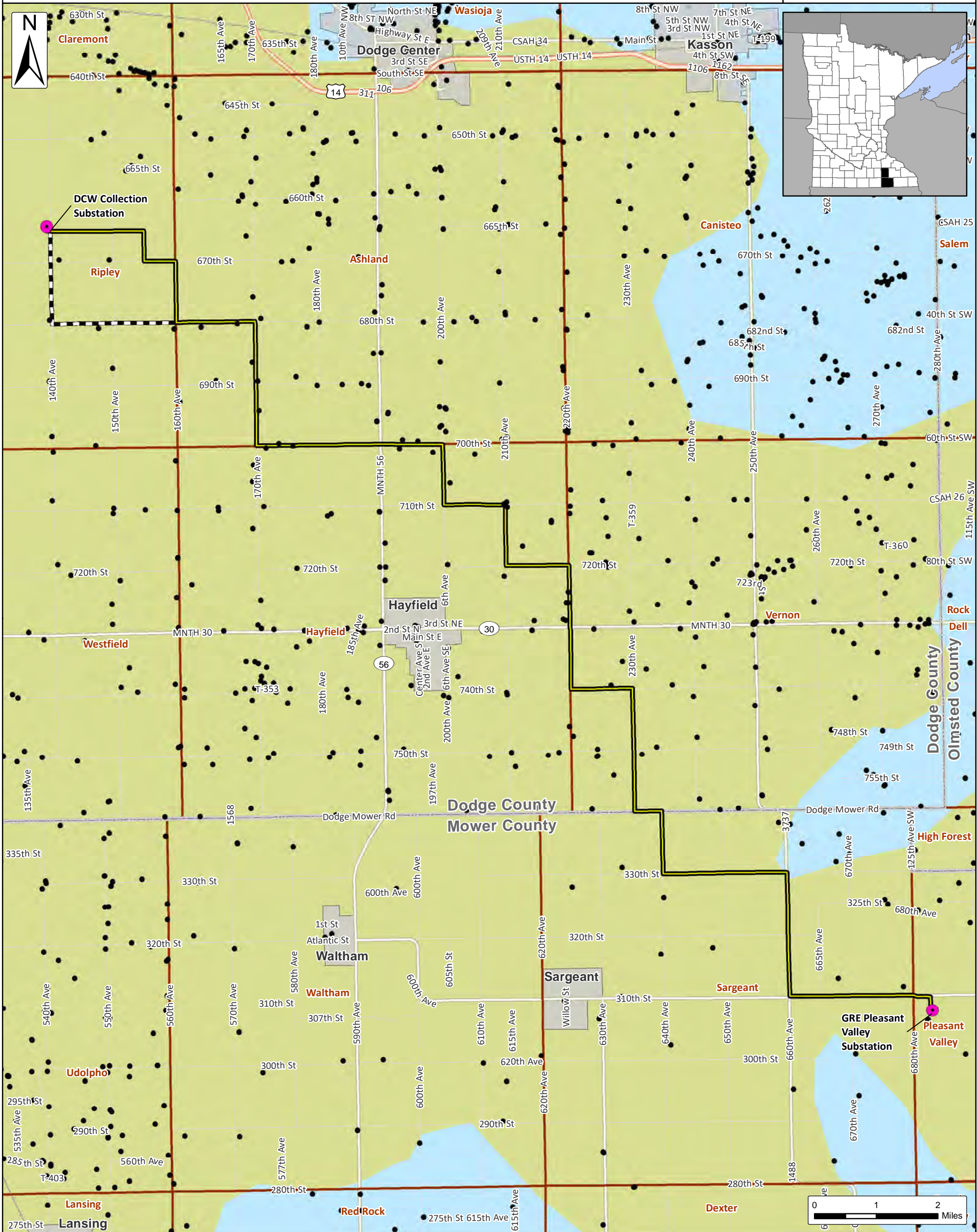


Dodge County Wind, LLC

Issue Date:
11/23/2021

Figure 5.10 - Groundwater Resources

Dodge County and Mower County, Minnesota



- Water Wells (MGS)
- Substation
- City/Village
- Townships
- Counties
- Ground Water Provinces (MNDNR)
 - South-Central Province
 - Southeastern Province
- Proposed Alignment
- Alternate Segment White



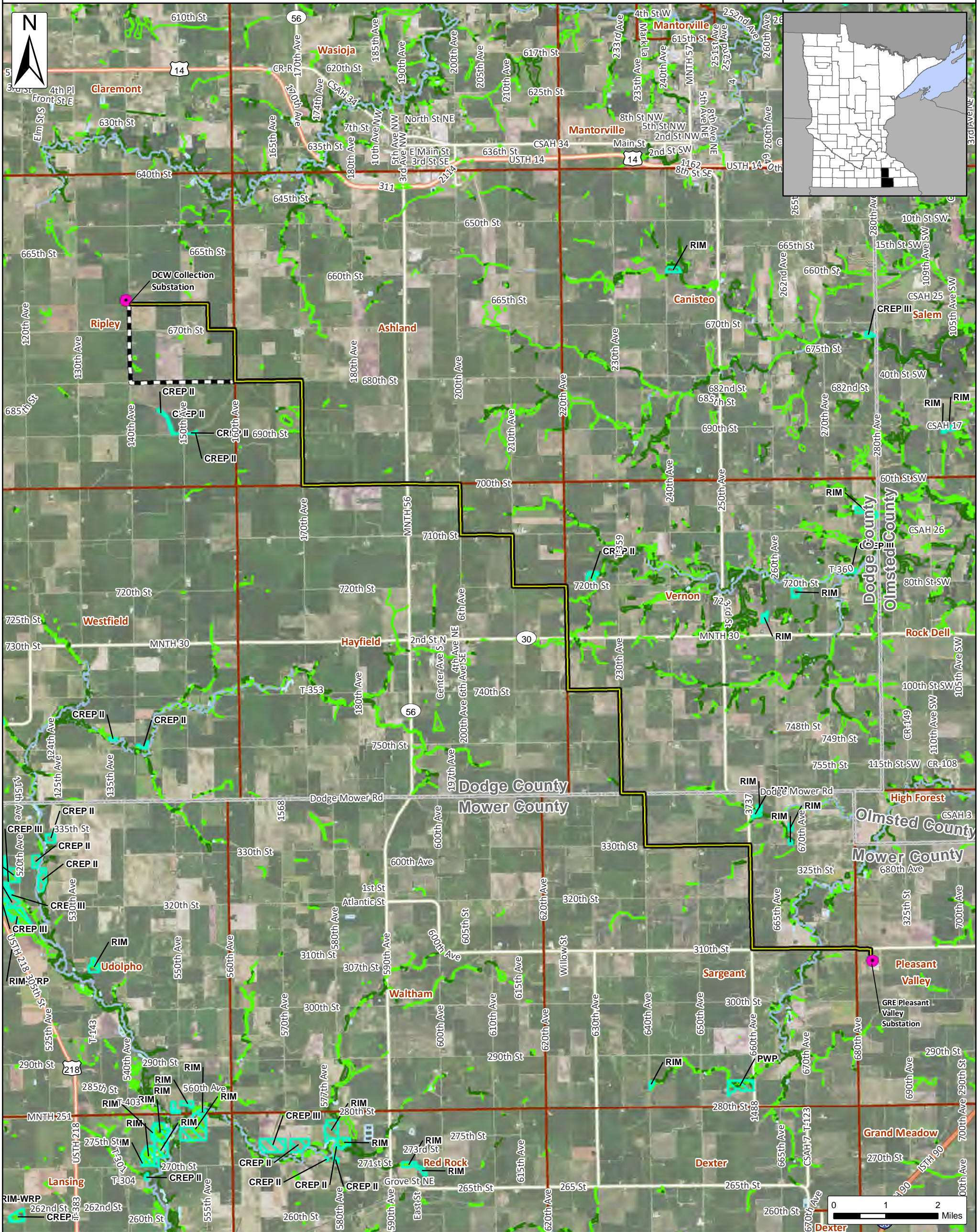
SOURCE: GROUND WATER PROVINCES (MNDNR)

Dodge County Wind, LLC

Issue Date:
11/23/2021

Figure 5.11 - Wetland Resources

Dodge County and Mower County, Minnesota



Wetland Type Freshwater Emergent Wetland Freshwater Forested/Shrub Wetland Freshwater Pond Lake Riverine	Rim Reserve Easements (BWSR) Substation Proposed Alignment Alternate Segment White	Counties Townships City/Village
--	---	---------------------------------------

SOURCE: USDA NAIP IMAGERY 2019

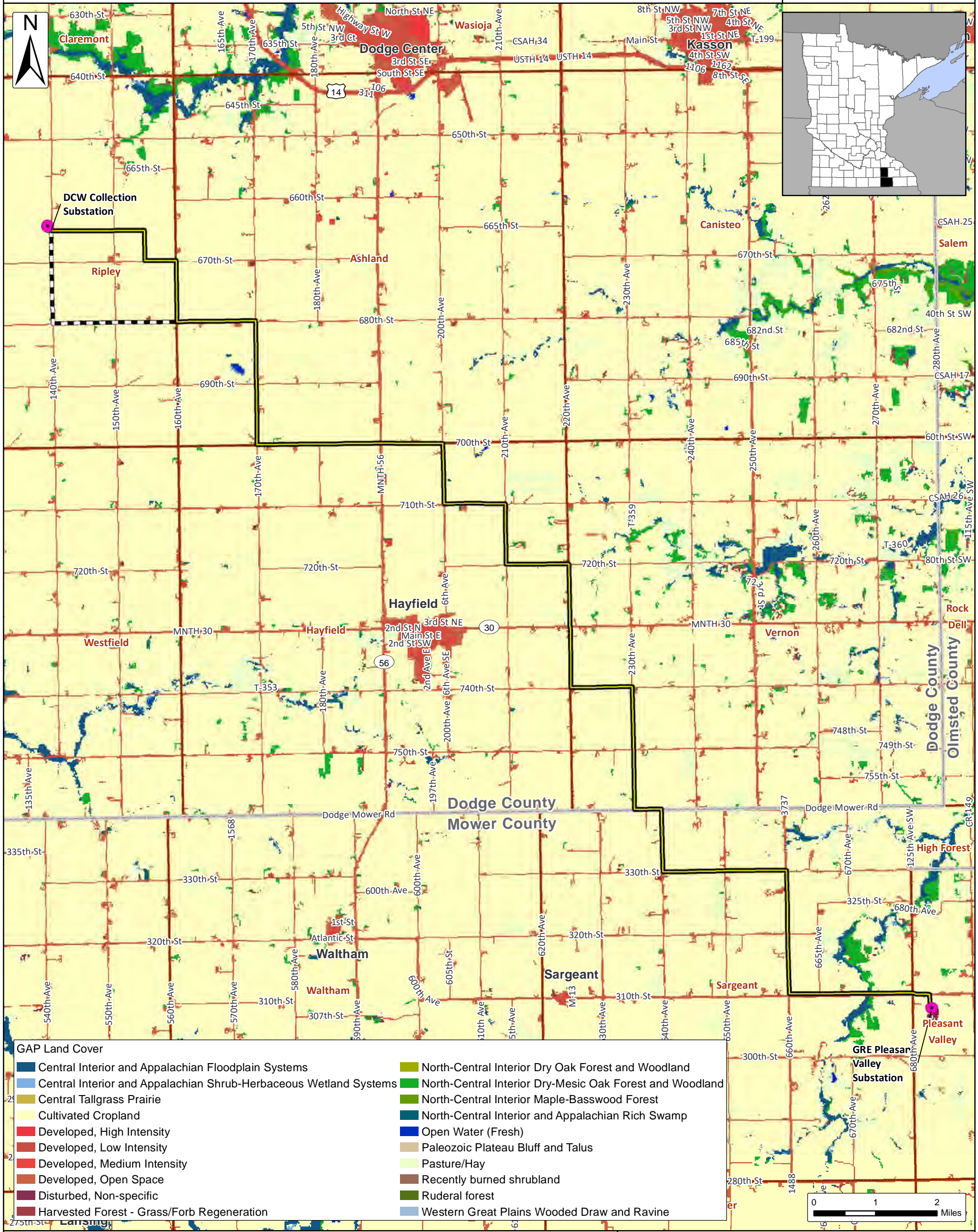


Dodge County Wind, LLC

Figure 5.12 - Land Cover - GAP

Dodge County and Mower County, Minnesota

Issue Date:
11/23/2021

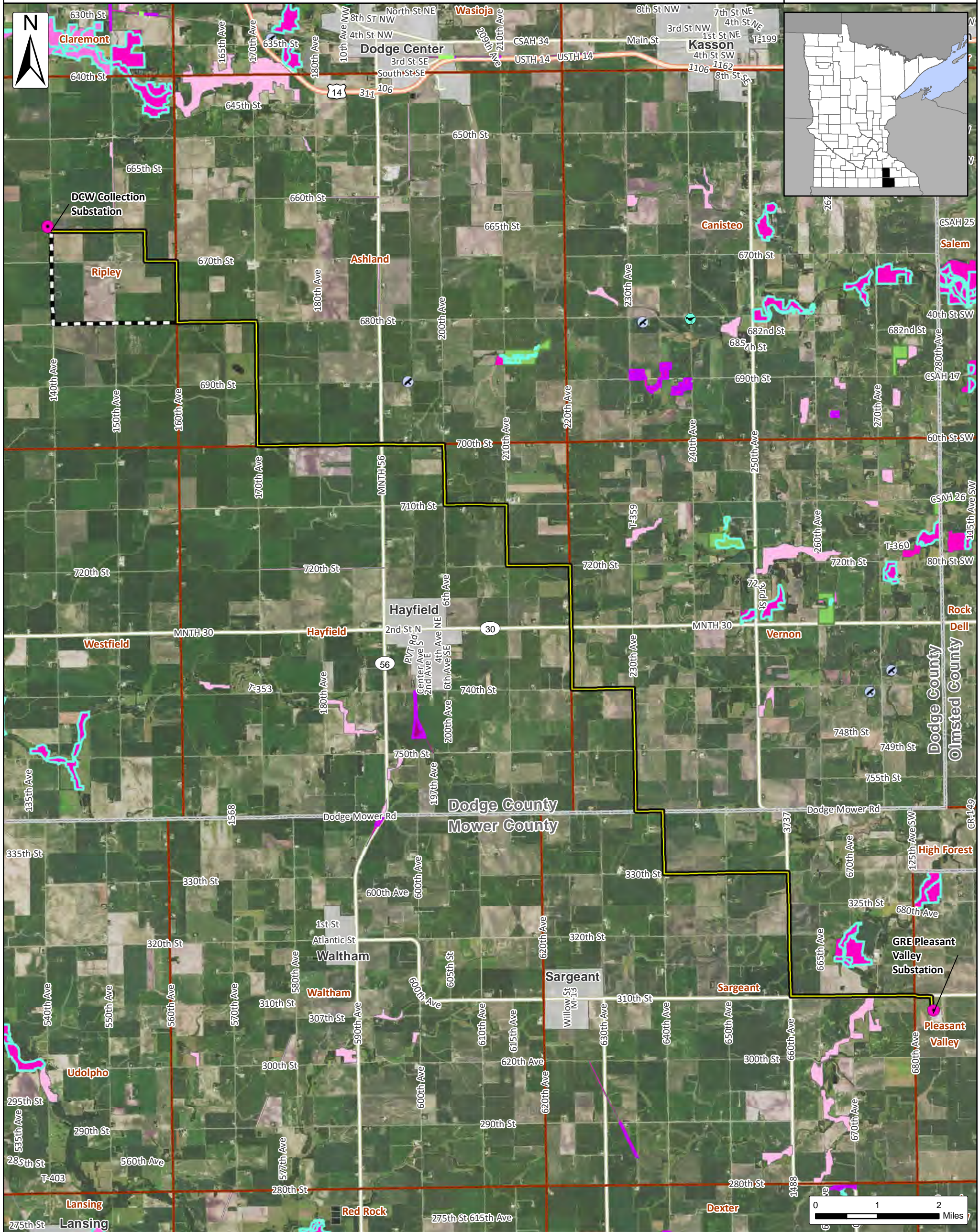


Dodge County Wind, LLC

Issue Date:
11/23/2021

Figure 5.13 - Rare and Unique Natural Features

Dodge County and Mower County, Minnesota



- Loggerhead Shrike Occurrence (Atwell, 2017)
- Bald Eagle Nest Locations
- Railroad ROW Praries (MCBS)
- Native Prairies (MNDNR)
- Native Plant Communities (MNDNR)
- Wildlife Management Areas (MNDNR)
- Sites of Biodiversity (MCBS)
 - Below
 - High
 - Moderate
 - Outstanding
- Substation
- Proposed Alignment
- Alternate Segment White
- City/Village
- Counties

SOURCE: USDA NAIP IMAGERY 2019

