



0200400

Feet

1 inch = 400 feet

N

E

S

W

**Appendix A**

**Appleton to Benson 115-kV Transmission Line Project**

**Detailed Route Maps**

**Swift County, Minnesota**

**Page 25 of 28**

Proposed Rebuild of Existing 115-kV

100ft Right-of-Way

Proposed Route Width

Forest/Shrub Area

Existing Natural Gas Pipeline

GRE AG-BK 115-kV Line

41.6-kV Transmission Line

115-kV Transmission Line

Railroad

State Water Trail

Snowmobile Trail

Impaired Stream (2024)

PWI Watercourse

MDNR Hydrography Dataset Watercourse

MDNR Hydrography Dataset Lake/Pond

**NWI Wetland Community (Cowardin Classification)**

PEM

PFO

PSS

PUB

R2U

Local Park/Recreation Area

County Highway

State Highway

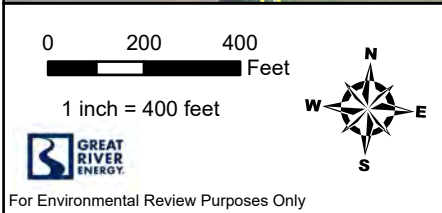
US Highway

For Environmental Review Purposes Only

Source: Z:\Clients\IE\_H\GRE\Appleton\_Benson\ArcGIS\Permitting\State\PUC\Route\_Permit\202408\Figures\Appleton\_Benson\_RP\_Figures.aprx

Date: (10/28/2024)





# Appendix A

## Appleton to Benson 115-kV Transmission Line Project

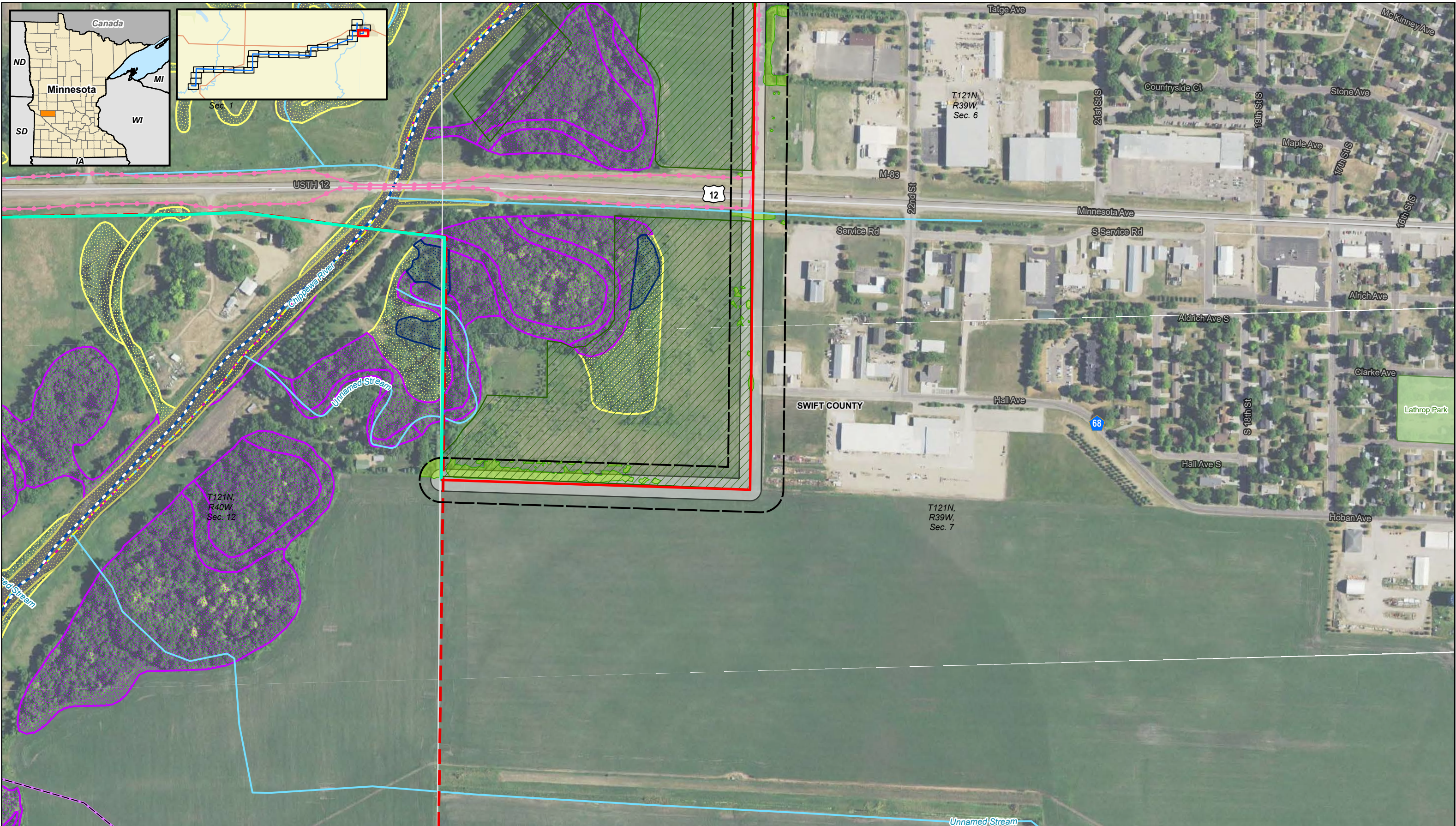
### Detailed Route Maps

#### Swift County, Minnesota

Page 26 of 28

Substation	Forest/Shrub Area	115-kV Transmission Line	<b>NWI Wetland Community (Cowardin Classification)</b> PEM PFO PSS	PUB
Proposed Rebuild of Existing 115-kV	Reclaimed Gravel Pit	Railroad		Local Park/Recreation Area
100ft Right-of-Way	GRE AG-BK 115-kV Line	Snowmobile Trail		County Highway
Proposed Route Width	41.6-kV Transmission Line	MDNR Hydrography Dataset Watercourse		State Highway
	69-kV Transmission Line			US Highway





0200400

Feet

1 inch = 400 feet

GREAT RIVER ENERGY

N

E

S

W

For Environmental Review Purposes Only

Appendix A

Appleton to Benson 115-kV Transmission Line Project

Detailed Route Maps

Swift County, Minnesota

Page 27 of 28

<div><div></div><div>Proposed New 115 kV Transmission Line</div></div> <div><div></div><div>Proposed Removal of 115-kV Transmission Line</div></div> <div><div></div><div>100ft Right-of-Way</div></div>	<div><div></div><div>Proposed Route Width</div></div> <div><div></div><div>Forest/Shrub Area</div></div> <div><div></div><div>Existing Natural Gas Pipeline</div></div> <div><div></div><div>GRE AG-BK 115-kV Line</div></div> <div><div></div><div>State Water Trail</div></div>	<div><div></div><div>Snowmobile Trail</div></div> <div><div></div><div>Impaired Stream (2024)</div></div> <div><div></div><div>PWI Watercourse</div></div> <div><div></div><div>MDNR Hydrography Dataset Watercourse</div></div>	<div>NWI Wetland Community (Cowardin Classification)</div> <div><div></div><div>PEM</div></div> <div><div></div><div>PFO</div></div> <div><div></div><div>PSS</div></div>	<div><div></div><div>R2U</div></div> <div><div></div><div>Local Park/Recreation Area</div></div> <div><div></div><div>County Highway</div></div> <div><div></div><div>State Highway</div></div> <div><div></div><div>US Highway</div></div>
--	---	--	---	---





0200400

Feet

1 inch = 400 feet

GREAT RIVER ENERGY

For Environmental Review Purposes Only

N

W

E

S

Appendix A

Appleton to Benson 115-kV Transmission Line Project

Detailed Route Maps

Swift County, Minnesota

Page 28 of 28

- Substation

— Proposed New 115 kV Transmission Line

□ 100ft Right-of-Way

▭ Proposed Route Width

■ Forest/Shrub Area

◆ Water Access Site

⛳ Golf Course

— Railroad

— State Water Trail

— Snowmobile Trail

— Impaired Stream (2024)

— PWI Watercourse

— MDNR Hydrography Dataset Watercourse

— MDNR Hydrography Dataset Lake/Pond

SWIFT COUNTY

NWI Wetland Community (Cowardin Classification)

■ PEM

■ PFO

■ PSS

■ PUB

■ R2U

■ Local Park/Recreation Area

■ County Highway

■ State Highway

■ US Highway