

Contains Privileged Information - Do Not Distribute

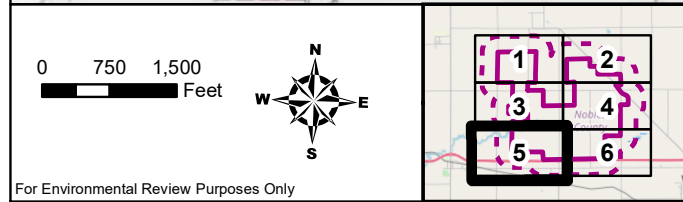


Figure 2.5: Previous Cultural Resources
Xcel Energy
Nobles Wind Farm Repower Project
Nobles County, Minnesota

- Project Area
- Literature Search Study Area
- Turbine Location
- Previous Survey
- Previously Recorded Architectural Structure
- Previously Recorded Archaeological Site
- Township Boundary



Source: Z:\chicago\Xcel\Nobles\Repower\figs\Bates\cultural\02_Nobles\022_Maps\022_Figures_PeriodicCulturalResources_10_2_11\F1A.mxd
 Date: 11/09/2023

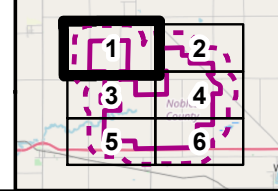
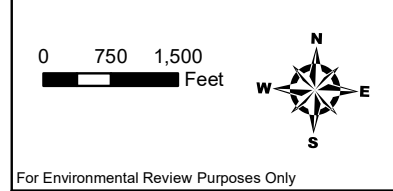
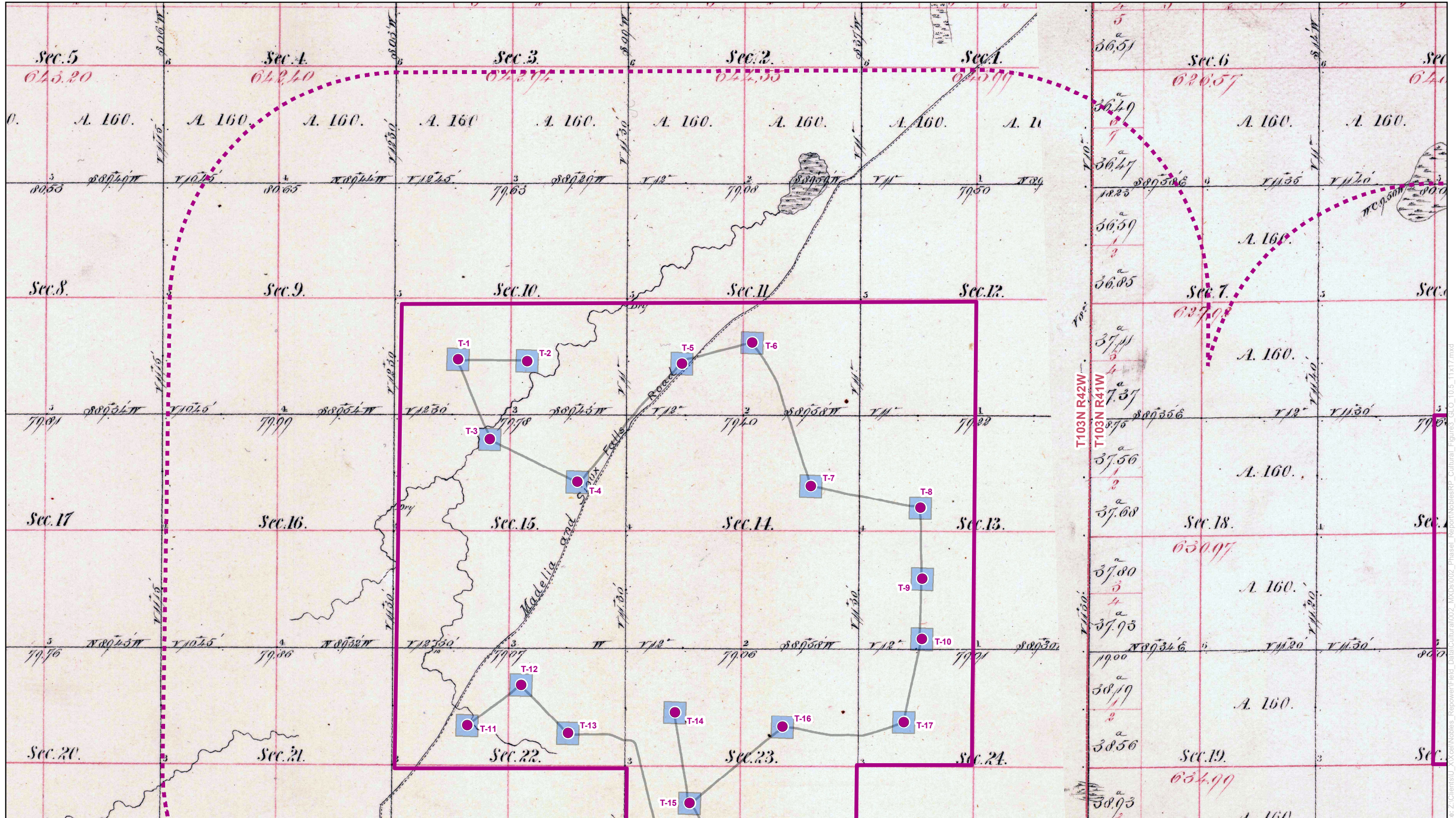


Figure 3.1: General Land Office Map
Xcel Energy
Nobles Wind Farm Repower Project
Nobles County, Minnesota

- Project Area
- Literature Search Study Area
- Turbine Location
- Previous Survey
- Township Boundary

