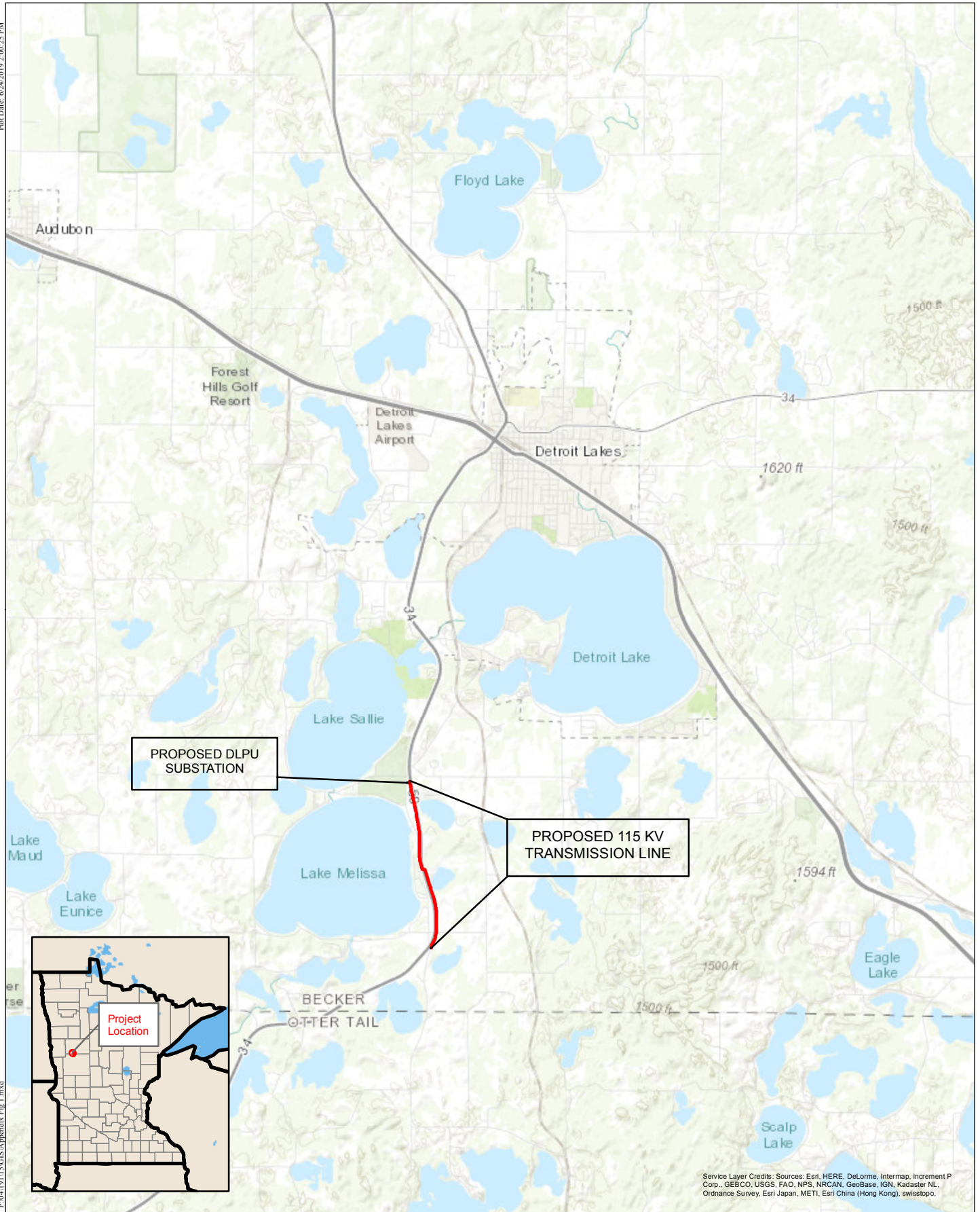


APPENDIX A



Service Layer Credits: Sources: Esri, HERE, DeLorme, Intermap, increment P Corp., GEBCO, USGS, FAO, NPS, NRCAN, GeoBase, IGN, Kadaster NL, Ordnance Survey, Esri Japan, METI, Esri China (Hong Kong), swisstopo.

REV	DATE	DESCRIPTION



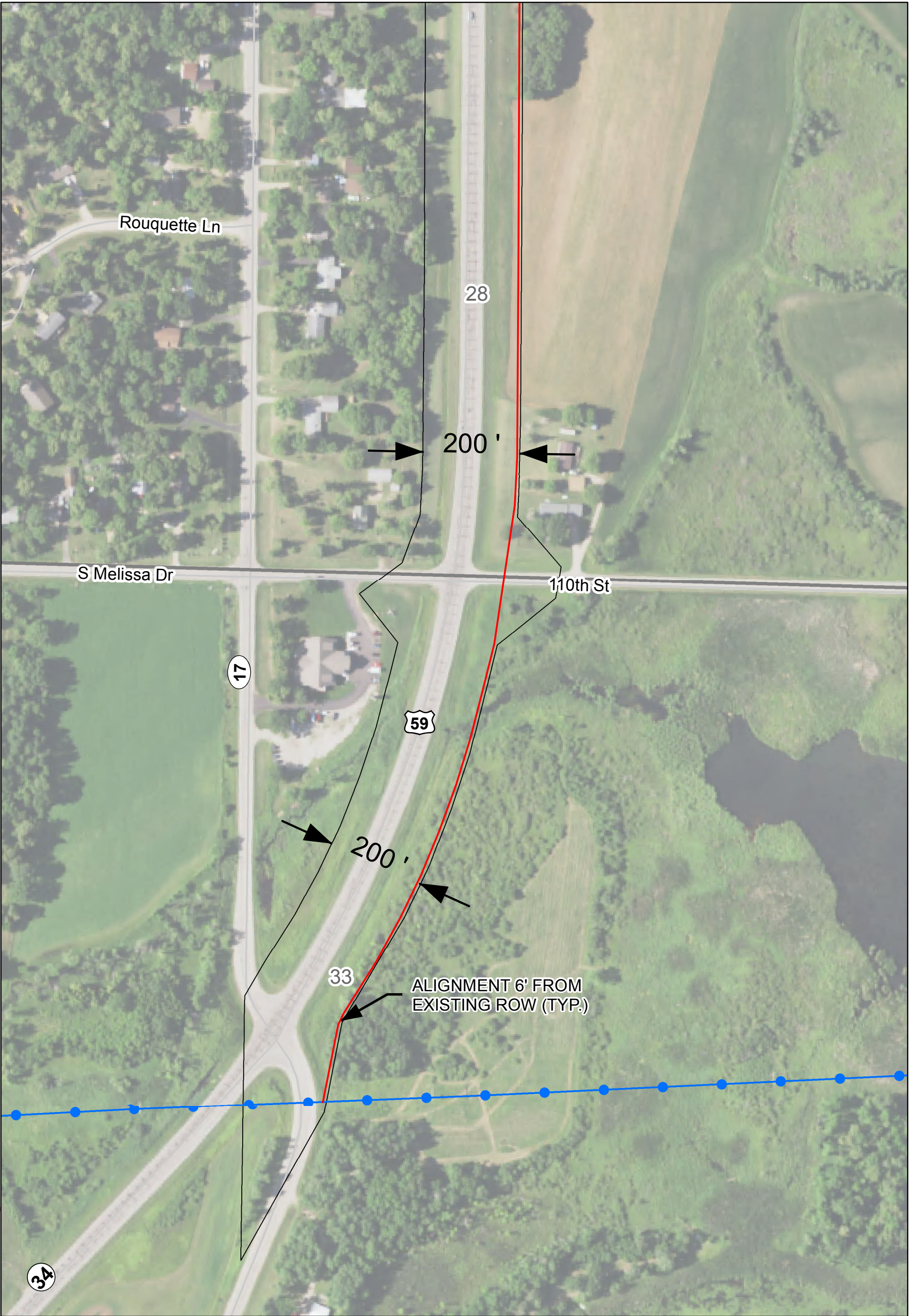
Project Manager: DJH
 Designer: DJH
 Project Number: 419115
 Phone: (712) 742-2531

DETROIT LAKES
 PUBLIC UTILITIES
 DETROIT LAKES, MN

PROJECT LOCATION
 115 KV TRANSMISSION LINE

F I G U R E
 Appendix A
 Figure 1

R 41W



T 138N

Rouquette Ln

S Melissa Dr

110th St

28

200'

59

17

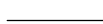



200'

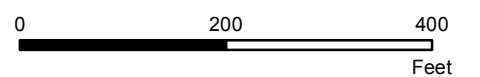
33

ALIGNMENT 6' FROM EXISTING ROW (TYP.)

34

Image Source: 2017 Farm Service Agency

-  Existing Right of Way
-  Anticipated 115kV Transmission Line Alignment
-  Proposed 115kV Substation Site
-  Existing 115kV Transmission Line



Appendix A Figure 2 Sheet 1 of 6
 Proposed 115 kV Transmission Line
 Routing Map
 Detroit Lakes Public Utilities
 Becker County, MN

P:\0419115\GIS\ROW_Offset.mxd



T 138N

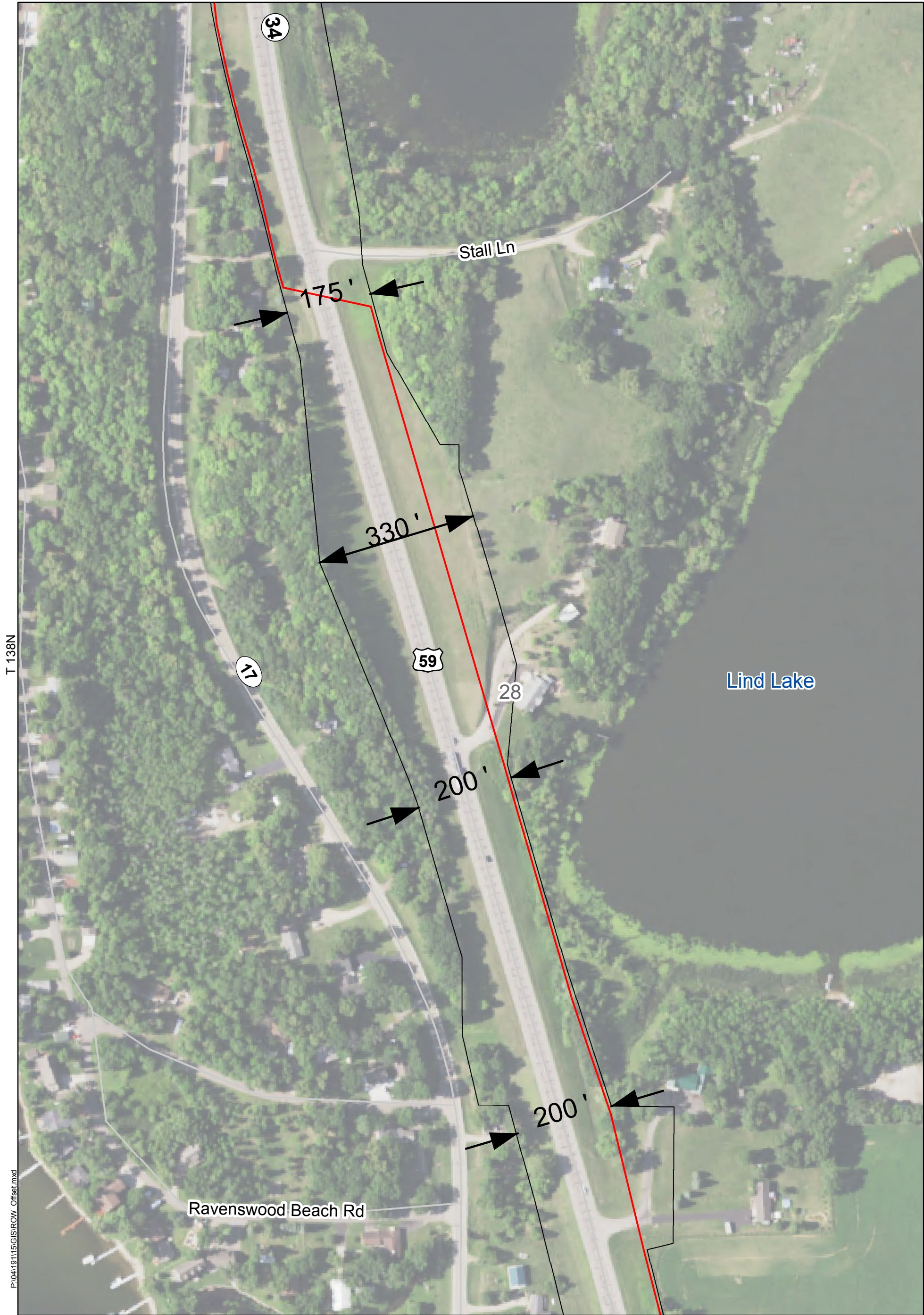
P:\0419115\GIS\ROW_Offset.mxd

Image Source: 2017 Farm Service Agency

- Existing Right of Way
- Anticipated 115kV Transmission Line Alignment
- Proposed 115kV Substation Site
- Existing 115kV Transmission Line



Appendix A Figure 2 Sheet 2 of 6
 Proposed 115 kV Transmission Line
 Routing Map
 Detroit Lakes Public Utilities
 Becker County, MN



T 138N

P:\0419115\GIS\RCW_Offset.mxd

Lind Lake

Image Source: 2017 Farm Service Agency

- Existing Right of Way
- Anticipated 115kV Transmission Line Alignment
- Proposed 115kV Substation Site
- Existing 115kV Transmission Line



Appendix A Figure 2 Sheet 3 of 6
 Proposed 115 kV Transmission Line
 Routing Map
 Detroit Lakes Public Utilities
 Becker County, MN

R 41W

34

200'

21

20

17

59

Cottage Lake

Ravenswood Beach Rd

29

28

Stall Ln

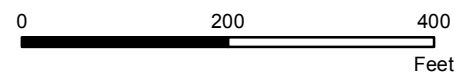
175'

T 138N

P:\0419115\GIS\RCW_Offset.mxd

Image Source: 2017 Farm Service Agency

- Existing Right of Way
- Anticipated 115kV Transmission Line Alignment
- Proposed 115kV Substation Site
- Existing 115kV Transmission Line



Appendix A Figure 2 Sheet 4 of 6
 Proposed 115 kV Transmission Line
 Routing Map
 Detroit Lakes Public Utilities
 Becker County, MN

R 41W

34

Meadow Lake

200'

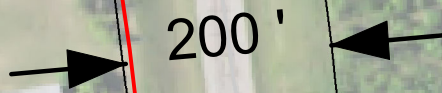


17

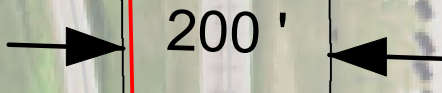
59

200'

21



200'



T 138N





20

Lois Ln

W Meadow Lake Ln

P:\0419115\GIS\ROW_Offset.mxd

Image Source: 2017 Farm Service Agency

-  Existing Right of Way
-  Anticipated 115kV Transmission Line Alignment
-  Proposed 115kV Substation Site
-  Existing 115kV Transmission Line



0 200 400
Feet

Appendix A Figure 2 Sheet 5 of 6
 Proposed 115 kV Transmission Line
 Routing Map
 Detroit Lakes Public Utilities
 Becker County, MN

34

150'

59

20

17

N Melissa Dr

150'

21





200'

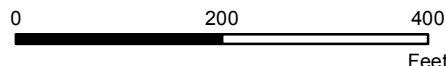
Meadow Lake

T 138N

P:\0419115\GIS\RCW_Offset.mxd

Image Source: 2017 Farm Service Agency

-  Existing Right of Way
-  Anticipated 115kV Transmission Line Alignment
-  Proposed 115kV Substation Site
-  Existing 115kV Transmission Line



Appendix A Figure 2 Sheet 6 of 6
 Proposed 115 kV Transmission Line
 Routing Map
 Detroit Lakes Public Utilities
 Becker County, MN