

Figures

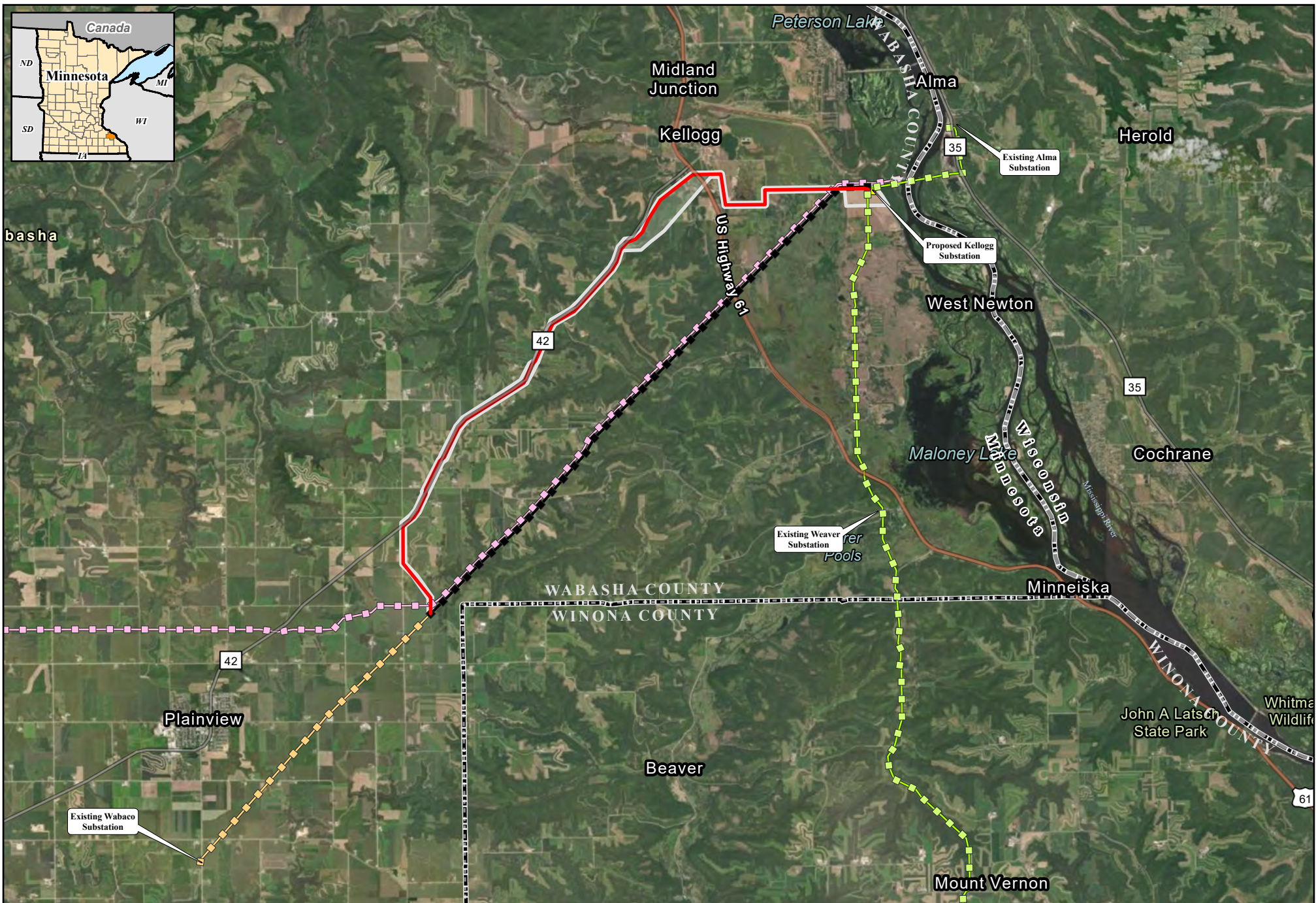
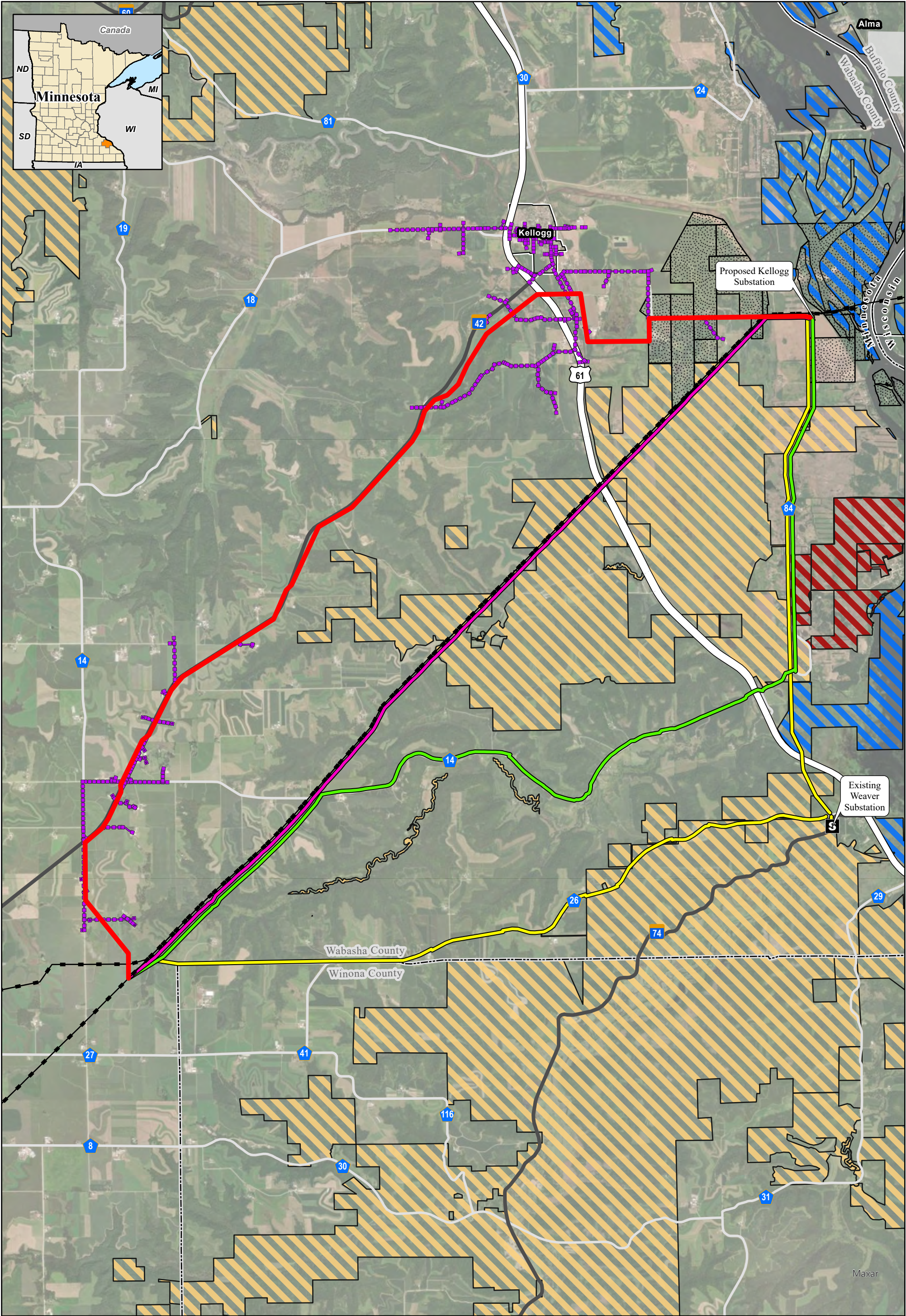



Figure 1-1
Wabasha Relocation Project
 Dairyland Power Cooperative
 Wabasha County, Minnesota

- Proposed Alignment
- Proposed Route Width
- Proposed Kellogg Substation
- County Boundary
- Existing Dairyland LN340 69-kV Transmission Line
- Existing Dairyland LQ34 161-kV Transmission Line
- CapX2020 Hampton-Rochester-La Crosse 345-kV Project / Mankato to Mississippi River 345kV Transmission Project
- Existing Dairyland LQ34 161-kV transmission line (to be removed)





DAIRYLAND POWER
COOPERATIVE

0 0.5 1 Miles

1:60,000












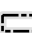



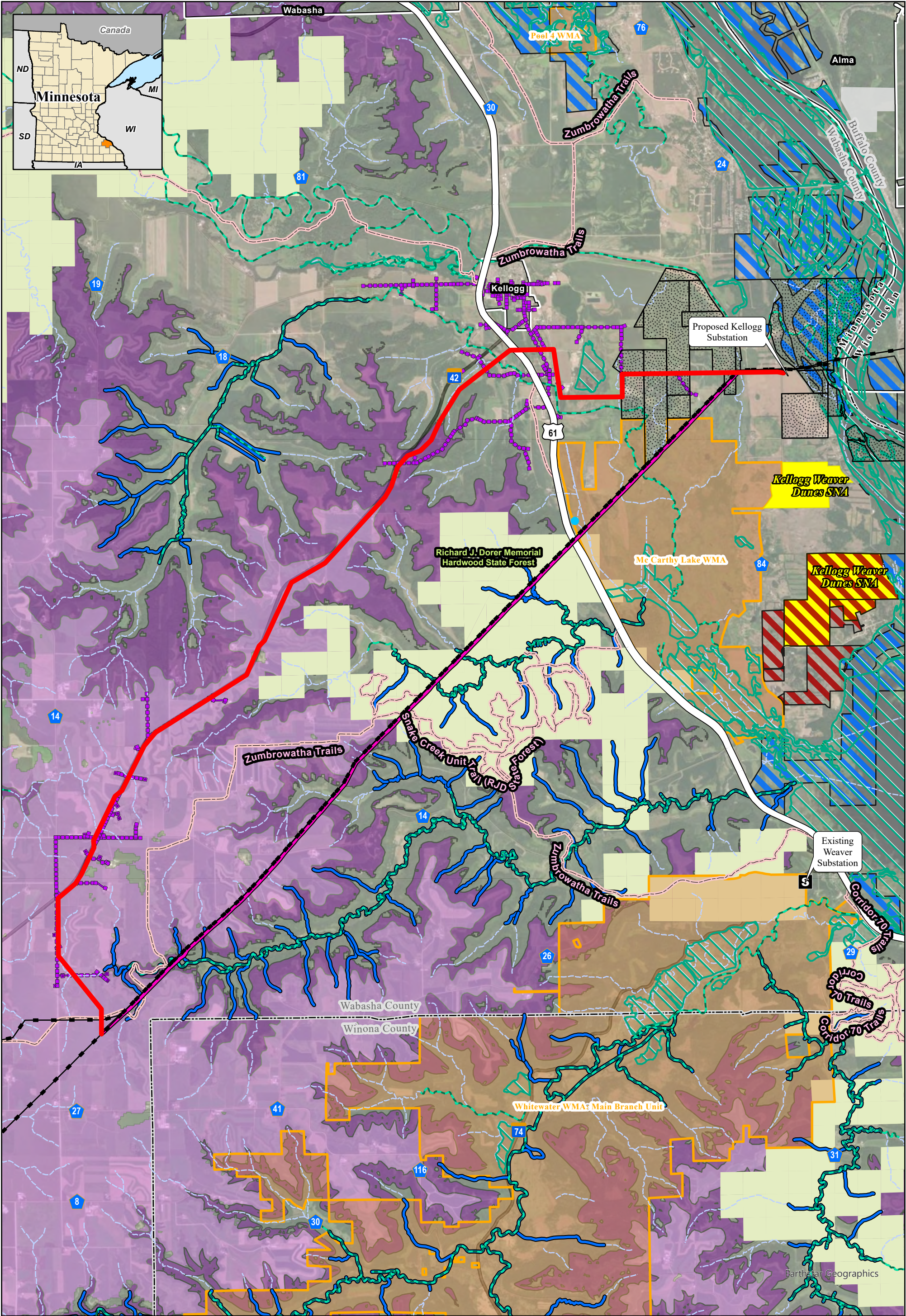



Figure 6-1
Proposed Route and Route Alternatives
Wabasha Relocation Project
Dairyland Power Cooperative
Wabasha County, Minnesota

 Existing Substation	 County Road 41/26 Route Alternative	 Non-Government Organization (The Nature Conservancy)
 Proposed 161-kV Transmission Line	 Existing Dairyland Line	 State Land
 CapX2020 Route Alternative	 Existing Distribution Line	 US Fish & Wildlife Service
 County Road 14 Alternative	 County Boundary	 Private Land
	 USACE Parcel	
	 Bureau of Land Management	






DAIRYLAND POWER
COOPERATIVE

0 0.5 1 Miles

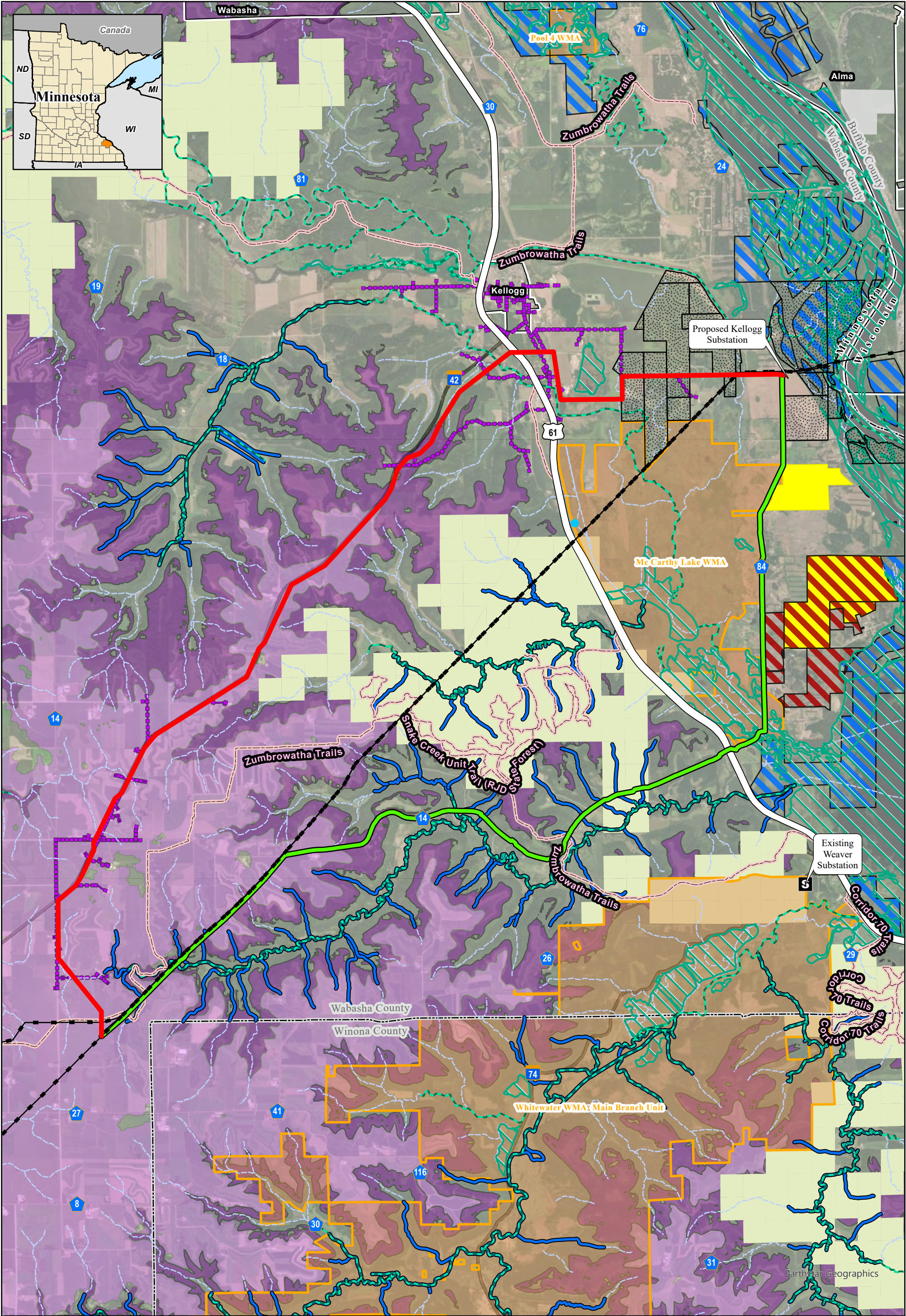
1:60,000




N
W E
S

Figure 6-2
CapX2020 Route Alternative
Wabasha Relocation Project
Dairyland Power Cooperative
Wabasha County, Minnesota

- | | | | |
|-----------------------------------|-----------------------------|---|--|
| S Existing Substation | State Forest | Highway 61 Scenic Byway | The Nature Conservancy |
| Calcareous Fen | Wildlife Management Area | Public Waters Inventory Watercourse | US Fish & Wildlife Service |
| Proposed 161-kV Transmission Line | MDNR River or Stream | Public Waters Inventory Watercourse Basin/Wetland | Private Land |
| CapX2020 Route Alternative | Trout Stream | USACE Parcel | Regions Prone to Karst |
| Existing Dairyland Line | Scientific and Natural Area | County Boundary | Prairie du Chien Group / Oneota Dolomite |
| Existing Distribution Line | Snowmobile Trail | | Prairie du Chien Group / Shakopee Fm |





0 0.5 1 Miles

1:60,000

For Environmental Review Purposes Only

Figure 6-3

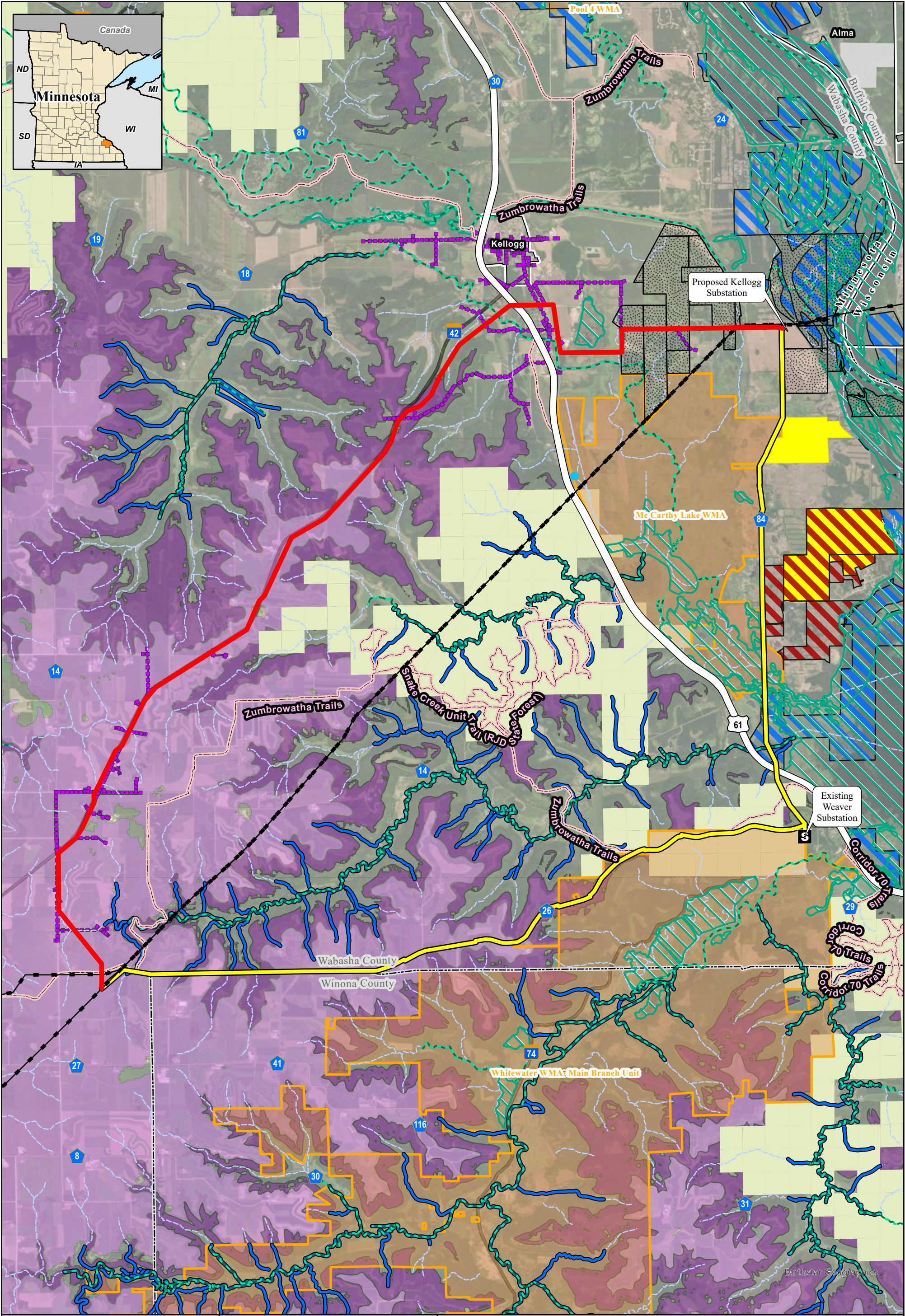
County Road 14 Alternative


Wabasha Relocation Project

Dairyland Power Cooperative

Wabasha County, Minnesota

S Existing Substation	State Forest	Trout Stream	US Fish & Wildlife Service
Calcareous Fen	Wildlife Management Area	Public Waters Inventory Watercourse	Private Land
Proposed 161-kV Transmission Line	Scientific and Natural Area	Public Waters Inventory Watercourse Basin/Wetland	Regions Prone to Karst
County Road 14 Alternative	Snowmobile Trail	USACE Parcel	Prairie du Chien Group / Onecota Dolomite
Existing Dairyland Line	Highway 61 Scenic Byway	County Boundary	Prairie du Chien Group / Shakopee Fm
Existing Distribution Line	MDNR River or Stream	The Nature Conservancy	





0 0.5 1 Miles

1:60,000

For Environmental Review Purposes Only


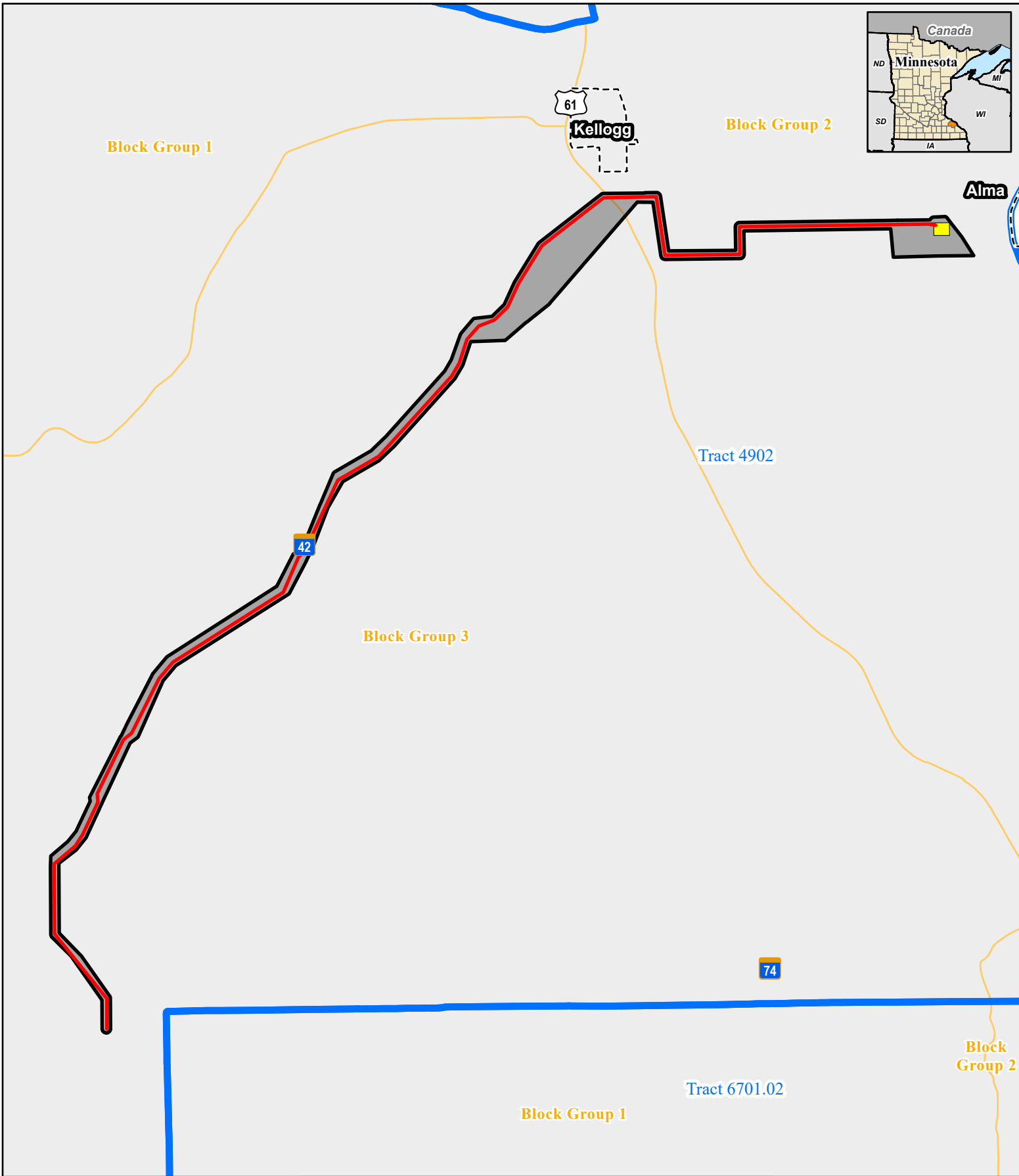


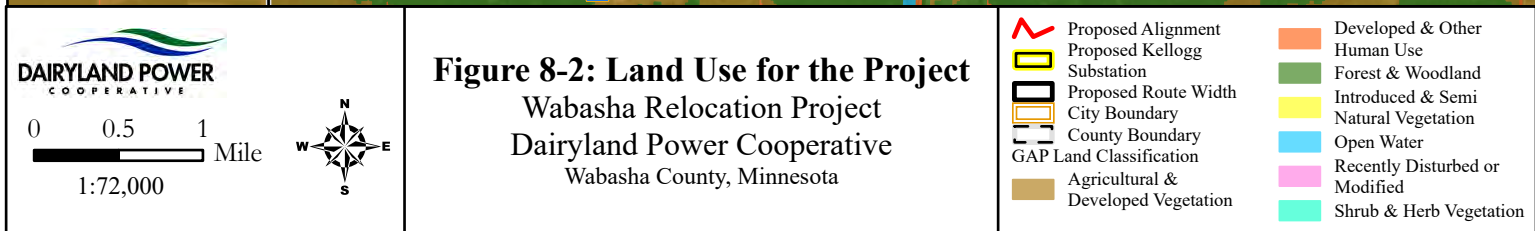
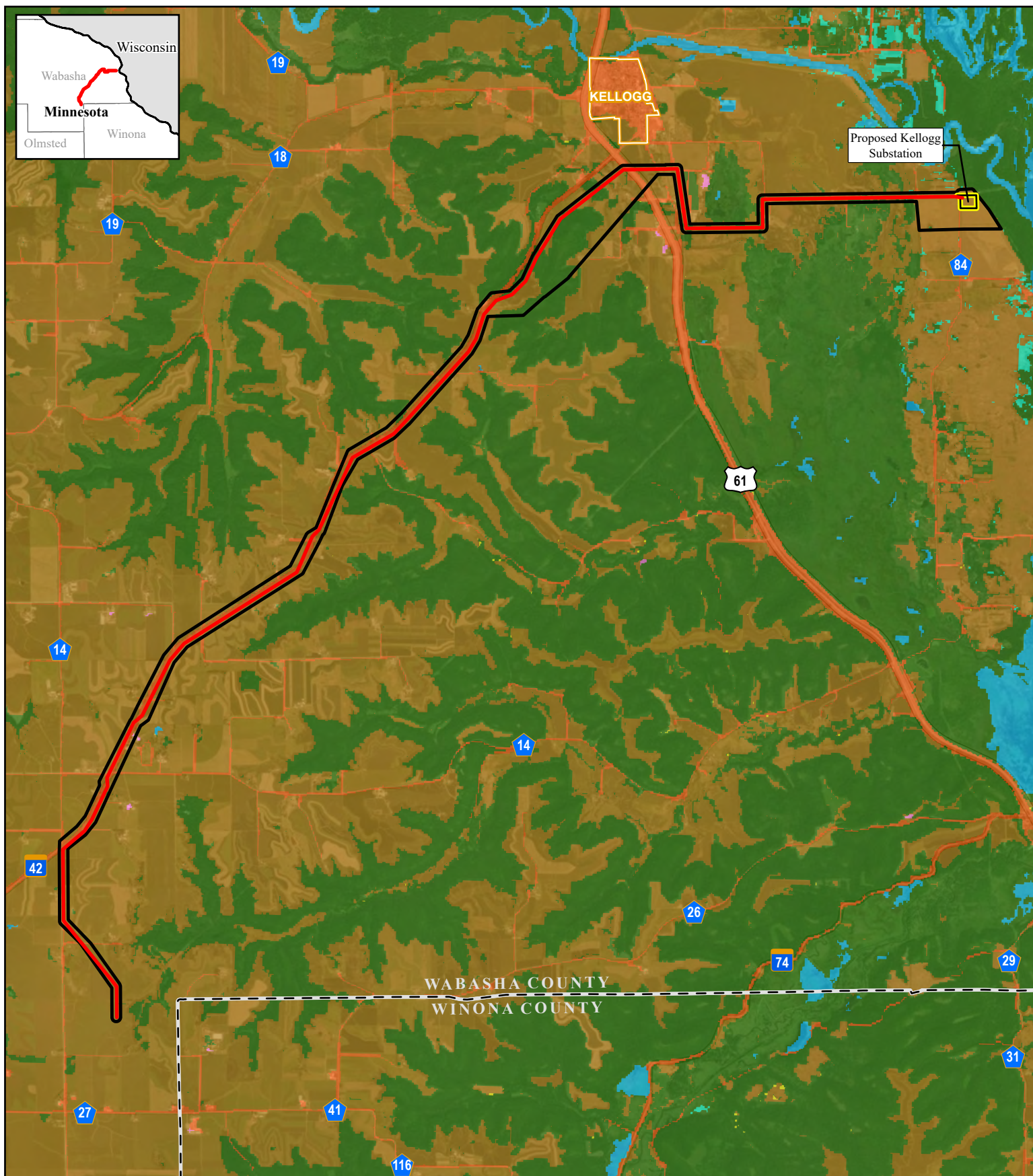


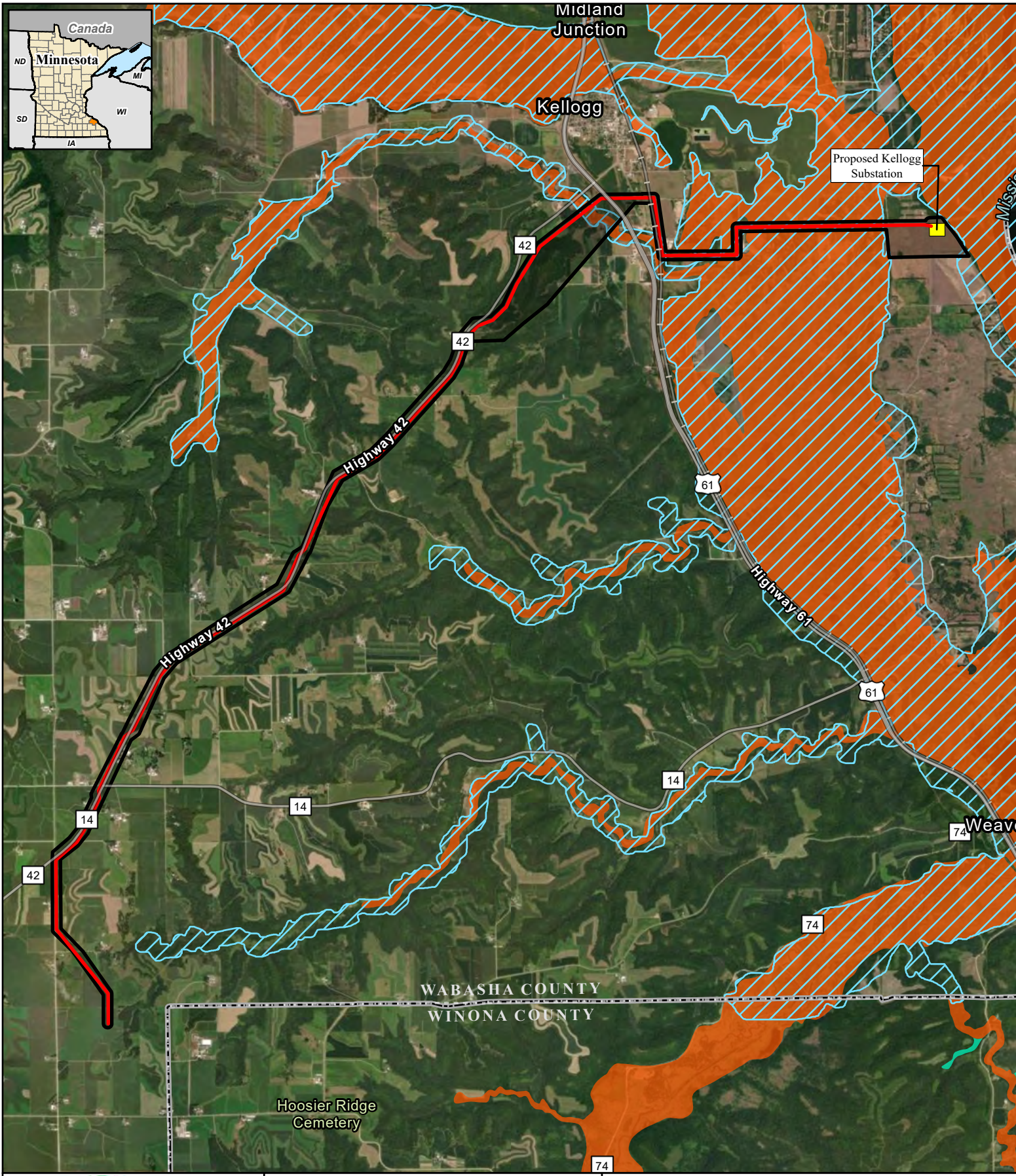
Figure 6-4
County Road 41/26 Route Alternative
Wabasha Relocation Project
Dairyland Power Cooperative
Wabasha County, Minnesota

- | | | | |
|-------------------------------------|-----------------------------|---|---|
| S Existing Substation | State Forest | Trout Stream | US Fish & Wildlife Service |
| Calcareous Fen | Wildlife Management Area | Public Waters Inventory Watercourse | Private Land |
| Proposed 161-kV Transmission Line | Scientific and Natural Area | Public Waters Inventory Watercourse Basin/Wetland | Regions Prone to Karst |
| County Road 41/26 Route Alternative | Highway 61 Scenic Byway | USACE Parcel | Prairie du Chien Group / Onkotia Dolomite |
| Existing Dairyland Line | Snowmobile Trail | County Boundary | Prairie du Chien Group / Shakopee Fm |
| Existing Distribution Line | MDNR River or Stream | The Nature Conservancy | |



 <p>0 0.5 1 Miles</p>  <p>For Environmental Review Purposes Only</p>	<p>Figure 8-1: Census Block Groups Wabasha Relocation Project Dairyland Power Cooperative Wabasha County, Minnesota</p>	<ul style="list-style-type: none"> Proposed Alignment Census Block Group Census Tract Proposed Kellogg Substation Proposed Route Width
---	--	---





DAIRYLAND POWER COOPERATIVE

0 0.5 1 Miles

N
W E
S

For Environmental Review Purposes Only

Figure 8-3: Wabasha County Floodplain and Shoreland Areas
Wabasha Relocation Project
 Dairyland Power Cooperative
 Wabasha County, Minnesota

Proposed Alignment	100-year floodplain
Proposed Kellogg Substation	500-year floodplain
Proposed Route Width	Shoreland Overlay Zone

Wabasha County Floodplain