

Data Source(s): Westwood (2021); Minnesota NAIP Imagery (2019); Census Bureau (2019); U.S. Minnesota Geological Survey, Freeborn County; University of Minnesota - Twin Cities, MN DNR (2020).

Legend

- ◆ Hayward Substation
- Municipal Boundary
- County Boundary
- ▲ Karst Feature
- Project Area
- Carbonate Minnesota Region Prone to Surface Karst Feature Development
- Major Highway

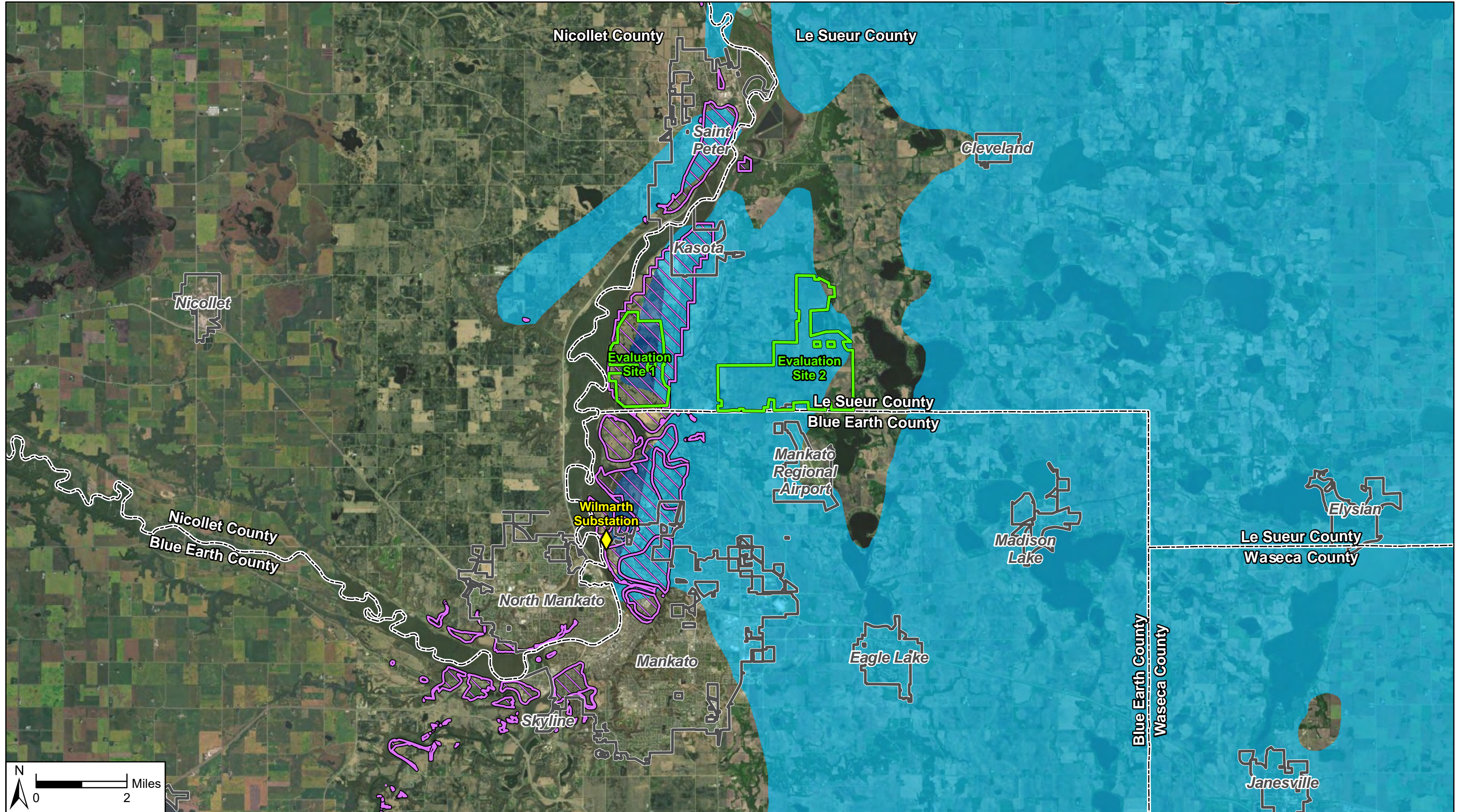
- Carbonate rocks buried under >50 ft of glacially derived insoluble sediments in a humid climate
- Carbonate rocks buried under ≤50 ft of glacially derived insoluble sediments in a humid climate

Hayward Solar Project

Freeborn County, Minnesota

Project Area Karst Lands

Map Document: N:\00265999_00\GIS\Prime Farmland Exhibit\Hayward_PrimeFarmland_210427.mxd 4/27/2021 4:49:39 PM radevito



Data Source(s): Westwood (2021); ESRI WMS World Imagery (Accessed 2021); Census Bureau (2019); U.S. Minnesota Geological Survey, Freeborn County, University of Minnesota - Twin Cities, MN DNR (2020).

Legend

- Wilmarth Substation
- Wilmarth Evaluation Sites
- Municipal Boundary
- County Boundary
- Major Highway
- Karst Feature
- Carbonate Minnesota Region Prone to Surface Karst Feature Development
- Carbonate rocks buried under >50 ft of glacially derived insoluble sediments in a humid climate
- Carbonate rocks buried under ≤50 ft of glacially derived insoluble sediments in a humid climate



Hayward Solar Project

Freeborn County, Minnesota

Wilmarth Evaluation Sites Karst Lands

Map Document: N:\0026599-00\GIS\Prime Farmland Exhibit\Hayward_PrimeFarmland_Ex15a_WilmarthEvaluationSitesKarstLandsMap_210429.mxd 4/29/2021 4:07:22 PM radevito