



Aurora Distributed Solar, LLC
A Subsidiary of Enel Green Power North America, Inc.

One Tech Drive, Suite 220 – Andover, MA 01810 – USA
T +1 978 681 1900 – F +1 978 681 7727

Tricia DeBleeckere
Minnesota Public Utilities Commission
121 7th Place E, Ste. 350
St. Paul, MN 55101
(Via E-Filing)

Aurora Distributed Solar Project
Docket # IP6928/GS-14-515
Information Request

Mrs. DeBleeckere,

Aurora Distributed Solar, LLC (Aurora) respectfully submits the below response as requested by the Minnesota Public Utilities Commission (the "Commission") on June 2, 2017.

1. Are the measures identified in the AIMP sufficient to allow for the establishment of vegetation at the Facilities through the operational life of the project and to minimize potential impacts to agricultural uses of the land upon the decommissioning of the project? If not, what modifications does Enel GP recommend?
 - Based on the experience gained through the construction of the Aurora solar sites as well as feedback provided by the contractor(s) involved in the project, the measures identified in the AIMP have generally provided sufficient guidance to accomplish the intent of the AIMP as defined in Section 6.4 of the site permit. While we are confident that the project will be successful in establishing the pollinator friendly vegetation at the Facilities through the operational life of the project, Aurora notes that there were aspects of the AIMP which, at the time the language was drafted, may have seemed appropriate based on comparison to the practices employed for other types of large energy generation or energy infrastructure projects in Minnesota. In practice, it would appear that the fundamental difference between the anticipated reference projects and the execution of the Aurora project was the focus on potential effects on adjacent lands in agricultural use, i.e. ensuring that the potential for crop damages are properly mitigated, versus recommended mitigation practices focusing on activities and management within the sites proper. While the importance of ensuring protection of adjacent agricultural lands should not be diminished, it would appear that the effects from the development of the Aurora solar sites remained confined to the site or land control boundaries. If given the opportunity to completely re-draft the AIMP, we would recommend focusing on better defining standards or best management practices to relating to soil preservation, segregation and compaction. However, it should also be noted that the concerns regarding the need for extensive de-compaction outside of the roadways and laydown areas expressed by Aurora's site inspectors during the initial site activities in 2016 have not been as extensive as previously believed.

In addition, references to existing drain tile protection the language in the AIMP primarily focuses on potential effects to adjacent landowners. We have found that there is equal, if not

more; need to properly assess the existing onsite drain tile systems relative to the proposed development and the effects both to adjacent land as well as within the site. Damage caused to the existing drain tile systems at various sites has been problematic regardless if an adjacent owner was affected. By failing to capture the need to properly assess and account for the drain tile system in the site design and review process, Aurora was not adequately prepared for the effects to the resultant change in site hydrology. Aurora has since requested that the engineering firm retained for the civil design of the facilities reassess the site conditions and has retained a tile contractor to assess the conditions at all sites that were affected by damage to the onsite systems and is currently implementing long-term repairs.

2. Does the Vegetation Management Plan sufficiently provide parameters to minimize tree clearing, prevent the introduction of noxious weeds and invasive species, revegetate disturbed areas at each Facility, and maintain appropriate vegetation at each Facility through the operating life of the project? Are revisions necessary?
 - Aurora believes that the measures identified in the he Vegetation Management Plan (VMP) have provided sufficient parameters to minimize tree clearing, prevent the introduction of noxious weeds and invasive species, re-vegetate disturbed areas as required in section 6.5 of the Site Permit. The pre-construction plan reviews clearly depicted the areas where tree clearing was proposed prior to site mobilization. During this process, multiple state agencies as well as Local Government Units were provided ample opportunity to review the development plans. Based on this review Aurora was able to have any minor modifications to the tree clearing plan reviewed as well as try and minimize removal wherever feasible. The execution of the tree removal was executed consistent with the plan.

Regarding noxious weed and invasive species control, Aurora again believes that the VMP provides sufficient detail regarding the need to employ appropriate best management practices regarding assessment and control of invasive species. While Aurora took extensive measures to communicate this and other requirements to its main contractor, the prosecution of this aspect of the project by the contractor retained to oversee the construction of the facilities were often delayed or minimized. In the first growing season the implementation of the necessary control practices following the initial earth disturbance activities were generally not executed in a timely manner, despite repeated requests by Aurora's field representatives, recommendations by their sub-contractor Minnesota Native Landscapes (MNL), as well as reports from the third party Agricultural Inspector. As a result, few sites were sprayed and instead, stop-gap measures, such as mechanical controls were required to at least attempt to limit the spread of the noxious weeds prior to seed dispersal. Aurora has since retained MNL directly and has implemented an integrated and potentially innovative¹ approach to invasive species control which includes intensive control measures prior to initial seed application, followed by regular monitoring and anticipated subsequent controls as necessary throughout the life of the project.

¹ At Aurora's Montrose and Lawrence Creek sites, small-scale tests were recently conducted to determine if utilizing grazing sheep were an effective control method for Canada thistle as compared to mechanical mowing. We are currently awaiting the results of those initial tests.



Lastly, since site re-vegetation is not yet complete; it has yet to be determined whether the management plan will be sufficient to maintain appropriate vegetation at each Facility through the operating life of the project. However, with the initial corrective actions being implemented, Aurora believes that the project should be able to achieve the goals of the AIMP/VMP.

Do revegetation and restoration methods need to vary by site? Provide site specific answers, as necessary.

- Given the diversity of soil and hydrological conditions present at the sixteen Aurora sites, we have always believed that the revegetation and restoration methods would need to be varied according to site conditions. As a result, during the planning phase, Aurora chose not to limit the site seed mixes to the three general types provided in the Appendix A of the AIMP/VMP. Instead, as part of their scope of services, MNL was asked to develop variations in the seed mixes appropriate for the site conditions. MNL has provided Aurora with a total of eleven (11) different seed mixes for restoration of the facilities. These are included as Attachment 1. Attachment 2 includes the modified seeding plans using the updated seed mixes for the Albany, Annandale, Chisago and Lake Pulaski facilities. For long-term maintenance goals, Aurora plans to continue to partner with MNL to ensure the highest likelihood of long term success in achieving the goals of the AIMP/VMP.

Aurora appreciates the opportunity to provide the requested information. Should you have any additional questions or concerns, please feel free to contact me at any time.

Sincerely,

A handwritten signature in blue ink, appearing to read "Hans P. van Lingen".

Hans P. van Lingen
HSEQ Manager, North America-
Construction
Health, Safety, Environment & Quality
Enel Green Power North America, Inc.

Appendix 1

Seed/Seed Mixes

Seed/Seed Mixes used will be purchased on a Pure Live Seed (“PLS”) basis for seeding re-vegetation areas.

Seed tags will identify:

- Purity;
- Germination;
- Date tested;
- Total weight and PLS weight;
- Weed seed content; and
- Seed supplier’s name and business information.

Seed will be used within 12 months of testing as required by applicable state rules and regulations. The seed tags on the seed sacks will also certify that the seed is “noxious weed free.” Seed rates used on the project will be based on PLS rate, not actual weight.

Following are three sample seed composition mixes anticipated for use at facilities. Aurora notes that the species components of individual mixes are subject to availability at the time of purchase. Grass species may be substituted with alternative native or non-invasive species that are included in Natural Resource Conservation Service guidelines and subject to approval by Aurora. Although the composition of the seed mixes will vary by facility and depending upon seed availability at the time of purchase, Aurora is providing the following mixtures to demonstrate its commitment to establishing a diverse mixture of native seeds at each site.

Sample General Composition of Seed Mix for use within Solar Panel Array

No Mow Turf with Forbs; Seeding Rate: 42 seeds per Sq. ft./ac	Height	Bloom Time	oz./acre	Seeds/oz.	Seeds/sq. ft.
<i>Cover Crop</i>					
<i>Avena sativa</i> (Oats) ¹	3'	NA	20lbs/ac	1,100	8.9
<i>Grasses</i>					
<i>Bouteloua curtipendula</i> (Side oats grama) PLS	1-2'	Jun-Nov	8.0	6000.00	1.10
<i>Bouteloua gracilis</i> (Blue grama) PLS	1'	Jul-Oct	4.0	40,000.00	3.67
<i>Buchloe dactyloides</i> (Buffalo grass--BOWIE cultivar) PLS	5"	Apr-Dec	128.0	3,600.00	10.58
<i>Carex bicknelli</i> (Copper shouldered oval sedge) PLS	1-3'	Mar-May	2.0	17000.00	0.78
<i>Koeleria macrantha</i> (Junegrass) PLS	10-20"	Apr-Jun	4.0	200,000.00	18.37
<i>Sporobolus heterolepis</i> (Prairie Dropseed) PLS	2-3'	Jun-Aug	4.0	16,000	1.47

¹ Spring oats to be included as a temporary cover crop

<i>Forbs</i>					
<i>Allium canadense</i> (Wild garlic)	1-2'	May-Jul	8.0	560.00	0.10
<i>Allium stellatum</i> (Prairie onion)	8-18"	Jul-Aug	1.00	11,000.00	0.25
<i>Anemone canadensis</i> (Canada Anemone)	1-2'	May-Jun	1.00	8,000.00	0.18
<i>Anemone patens</i> (Pasqueflower)	3-18"	Apr-May	1.00	18,000.00	0.41
<i>Asclepias tuberosa</i> (Butterfly-weed)	1-2'	Jun-Aug	2.00	4,300.00	0.20
<i>Echinacea angustifolia</i> (Narrow leaved Purple Coneflower)	1-2'	Jun-Jul	2.00	7000	0.32
<i>Sisyrinchium campestre</i> (Prairie blue-eyed grass)	4-16"	May-Jun	1.00	45,000.00	1.03
<i>Solidago nemoralis</i> (Gray goldenrod)	1-2'	Aug-Oct	0.50	300,000.00	3.44

Sample General Composition of Pollinator Friendly Seed Mix for use Outside Solar Panel Array

Prairie Seed Mix (Mesic prairie UPs23) Seeding Rate: 40 seeds per Sq ft/ac	Height	Bloom Time	oz/acre	Seeds/oz	Seeds/sq ft
<i>Forbs</i>					
<i>Allium canadense</i> (wild garlic)	1-2'	May-Jul	1.0	560.00	0.01
<i>Amorpha canescens</i> (lead plant)	1-3'	Jun-Jul	2.0	16000.00	0.73
<i>Anemone canadensis</i> (Canada Anemone)	1-2'	May-Jun	1.00	8000.00	0.18
<i>Asclepias tuberosa</i> (Butterfly-weed)	1-2'	May-Sep	3	4300	0.30
<i>Coreopsis palmata</i> (Prairie coreopsis)	1-3'	Jul-Aug	2	10000	0.46
<i>Dalea candida</i> (White Prairie Clover)	1-3'	May-Sep	4	19000	1.74
<i>Dalea purpurea</i> (Purple Prairie Clover)	1-3'	Jun-Sep	6	15000	2.07
<i>Echinacea angustifolia</i> (Narrow leaved Purple Coneflower)	1-2'	Jun-Jul	2	7000	0.32
<i>Galium boreale</i> (northern bedstraw)	1-3'	May-Aug	0.15	70000	0.24
<i>Liatris aspera</i> (rough blazingstar)	1-4'	Aug-Sep	2	16000	0.73
<i>Lobelia spicata</i> (pale-spike lobelia)	1-2'	Jun-Jul	0.1	900000	2.07
<i>Monarda fistulosa</i> (Wild Bergamot)	2-4'	May-Sep	0.25	70000	0.40
<i>Phlox pilosa</i> (Prairie phlox)	6-24"	Mar-May	0.2	19000	0.09
<i>Potentilla arguta</i> (Prairie cinquefoil)	1-3'	Jun-Sep	0.5	230000	2.64
<i>Pycnanthemum virginianum</i> (Mountain Mint)	1-3'	Jul-Aug	0.2	220000	1.01
<i>Ratibida columnifera</i> (Upright prairie coneflower)	1-3'	May-Oct	1	42000	0.96
<i>Rudbeckia hirta</i> (black-eyed Susan)	1-3'	Jun-Oct	0.5	92000	1.06
<i>Sisyrinchium campestre</i> (Prairie blue-eyed grass)	4-16"	May-Jun	0.5	45000	0.52
<i>Solidago rigida</i> (Stiff Goldenrod)	1-5'	Aug-Oct	0.25	41000	0.24
<i>Solidago speciosa</i> (showy goldenrod)	1-5'	Aug-Sep	0.25	95000	0.55
<i>Symphotrichum ericoides</i> (Heath Aster)	1-3'	Aug-Oct	1	200000	4.59
<i>Symphotrichum novae-angliae</i> (New England Aster)	3-7'	Aug-Oct	1	66000	1.52
<i>Zizia aptera</i> (Heart-leaved Alexanders)	1-3'	May-Jun	0.5	12,000	0.14
<i>Cover Crop</i>					
<i>Avena sativa</i> (Oats)			20lbs/ac		

<i>Grasses</i>					
Carex bicknelli (Copper shouldered oval sedge)	1-3'	Mar-May	2.0	17000.00	0.78
Bouteloua curtipendula (Side oats grama)	1-2'	Jun-Nov	24.0	6000.00	3.31
Schizachyrium scoparium (Little Bluestem PLS)	1-3'	Jun-Dec	32.0	15,000	11.02
Sporobolus heterolepis (Prairie Dropseed PLS)	2-3'	Jun-Aug	8.0	16,000	2.94

Sample General Composition of Seed Mix for use in Wetland Areas

34-271 Wet Meadow South & West²

Common Name	Scientific Name	Rate (kg/ha)	Rate (lb/ac)	% of Mix (% by wt)	Seeds/sq ft
fringed brome	<i>Bromus ciliatus</i>	1.23	1.10	9.18%	4.45
bluejoint	<i>Calamagrostis canadensis</i>	0.06	0.05	0.41%	5.00
Virginia wild rye	<i>Elymus virginicus</i>	1.12	1.00	8.37%	1.55
rice cut grass	<i>Leersia oryzoides</i>	0.28	0.25	2.07%	3.10
tall manna grass	<i>Glyceria grandis</i>	0.17	0.15	1.26%	3.90
fowl manna grass	<i>Glyceria striata</i>	0.11	0.10	0.83%	3.30
fowl bluegrass	<i>Poa palustris</i>	0.39	0.35	2.88%	16.50
	Total Grasses	3.36	3.00	25.00%	37.80
bristly sedge	<i>Carex comosa</i>	0.24	0.21	1.78%	2.36
pointed broom sedge	<i>Carex scoparia</i>	0.06	0.05	0.43%	1.60
awl-fruited sedge	<i>Carex stipata</i>	0.19	0.17	1.40%	2.10
tussock sedge	<i>Carex stricta</i>	0.03	0.03	0.21%	0.50
fox sedge	<i>Carex vulpinoidea</i>	0.16	0.14	1.13%	5.00
path rush	<i>Juncus tenuis</i>	0.04	0.04	0.34%	15.00
dark green bulrush	<i>Scirpus atrovirens</i>	0.20	0.18	1.48%	30.00
woolgrass	<i>Scirpus cyperinus</i>	0.09	0.08	0.67%	50.00
	Total Sedges and Rushes	1.01	0.90	7.44%	106.56
marsh milkweed	<i>Asclepias incarnata</i>	0.27	0.24	2.03%	0.43
common boneset	<i>Eupatorium perfoliatum</i>	0.02	0.02	0.18%	1.30
grass-leaved goldenrod	<i>Euthamia graminifolia</i>	0.01	0.01	0.06%	1.00
spotted Joe pye weed	<i>Eutrochium maculatum</i>	0.02	0.02	0.18%	0.75
autumn sneezeweed	<i>Helenium autumnale</i>	0.03	0.03	0.23%	1.30
sawtooth sunflower	<i>Helianthus grosseserratus</i>	0.04	0.04	0.30%	0.20
great lobelia	<i>Lobelia siphilitica</i>	0.02	0.02	0.13%	2.90
blue monkey flower	<i>Mimulus ringens</i>	0.01	0.01	0.07%	6.80
Virginia mountain mint	<i>Pycnanthemum virginianum</i>	0.07	0.06	0.53%	5.10
giant goldenrod	<i>Solidago gigantea</i>	0.02	0.02	0.14%	1.50
eastern panicled aster	<i>Symphyotrichum lanceolatum</i>	0.03	0.03	0.22%	1.50
red-stemmed aster	<i>Symphyotrichum puniceum</i>	0.19	0.17	1.42%	5.00
tall meadow-rue	<i>Thalictrum dasycarpum</i>	0.01	0.01	0.12%	0.11
blue vervain	<i>Verbena hastata</i>	0.15	0.13	1.12%	4.61
bunched ironweed	<i>Vernonia fasciculata</i>	0.03	0.03	0.28%	0.30
Culver's root	<i>Veronicastrum virginicum</i>	0.01	0.01	0.12%	4.20
golden alexanders	<i>Zizia aurea</i>	0.28	0.25	2.06%	1.00
	Total Forbs	1.23	1.10	9.19%	38.00
Oats or winter wheat (see note at beginning of list for recommended dates)		7.85	7.00	58.37%	3.12
	Total Cover Crop	7.85	7.00	58.37%	3.12
	Totals:	13.45	12.00	100.00%	185.48
Purpose:	Wet meadow / Sedge meadow reconstruction for wetland mitigation or ecological restoration projects				

² Standard State Seed Mix http://www.bwsr.state.mn.us/native_vegetation/state_seed_mixes.pdf



**Aurora Solar
Array Mix - Sandy Soils**

8740 77th Street NE Otsego, MN 55362

Date:	10/24/2016
Total Acres:	1.00
Grass lbs/ac:	11.70
Forb lbs/ac:	1.30
Cover Crop lbs/ac:	15.00
Total lbs/ac:	28.00

	Scientific Name	Common Name	% of Mix	PLS lbs/ac	Total PLS lbs
Grasses:	Bouteloua curtipendula	Side-Oats Grama	25.00	3.25	3.25
	Bouteloua gracilis	Blue Grama	25.00	3.25	3.25
	Carex bicknellii	Bicknell's Sedge	2.50	0.33	0.33
	Carex brevior	Plains Oval Sedge	1.50	0.20	0.20
	Elymus trachycaulus	Slender Wheat Grass	5.00	0.65	0.65
	Elymus villosus	Silky Wild Rye	5.00	0.65	0.65
	Koeleria macrantha	Junegrass	2.00	0.26	0.26
	Schizachyrium scoparium	Little Bluestem	10.00	1.30	1.30
	Sporobolus cryptandrus	Sand Dropseed	14.00	1.82	1.82
	Forbs:	Allium canadense	Wild Garlic	0.20	0.03
Allium stellatum		Prairie Onion	0.20	0.03	0.03
Aquilegia canadensis		Columbine	0.15	0.02	0.02
Asclepias tuberosa		Butterfly Milkweed	0.20	0.03	0.03
Chamaecrista fasciculata		Partridge Pea	4.60	0.60	0.60
Dalea purpureum		Purple Prairie Clover	0.80	0.10	0.10
Lupinus perennis		Wild Lupine	0.50	0.07	0.07
Monarda punctata		Spotted Bee Balm	0.25	0.03	0.03
Penstemon gracilis		Slender Beardtongue	0.10	0.01	0.01
Ratibida columnifera		Long-Headed Coneflower	1.70	0.22	0.22
Rudbeckia hirta		Black Eyed Susan	0.25	0.03	0.03
Solidago nemoralis		Old Field Goldenrod	0.10	0.01	0.01
Verbena stricta		Hoary Vervain	0.75	0.10	0.10
Zizia aurea		Golden Alexanders	0.20	0.03	0.03
Cover Crop:	To be determined at time of seeding			15.00	15.00

Species subject to change based on availability



**Aurora Solar
Array Mix - Mesic Soils**

8740 77th Street NE Otsego, MN 55362

Date:	10/24/2016
Total Acres:	1.00
Grass lbs/ac:	9.00
Forb lbs/ac:	1.00
Cover Crop lbs/ac:	15.00
Total lbs/ac:	25.00

	Scientific Name	Common Name	% of Mix	PLS lbs/ac	Total PLS lbs	
Grasses:	Bouteloua curtipendula	Side-Oats Grama	35.00	3.50	3.50	
	Bouteloua gracilis	Blue Grama	10.00	1.00	1.00	
	Carex bicknellii	Bicknell's Sedge	2.00	0.20	0.20	
	Carex brevior	Plains Oval Sedge	1.00	0.10	0.10	
	Carex vulpinoidea	Fox Sedge	1.00	0.10	0.10	
	Elymus villosus	Silky Wild Rye	5.00	0.50	0.50	
	Elymus virginicus	Virginia Wild Rye	10.00	1.00	1.00	
	Festuca subverticillata	Nodding Fescue	1.00	0.10	0.10	
	Koeleria macrantha	Junegrass	2.75	0.28	0.28	
	Schizachyrium scoparium	Little Bluestem	14.50	1.45	1.45	
	Sporobolus cryptandrus	Sand Dropseed	5.75	0.58	0.58	
	Sporobolus heterolepis	Prairie Dropseed	2.00	0.20	0.20	
	Forbs:	Agastache foeniculum	Fragrant Giant Hyssop	0.25	0.03	0.03
		Allium canadense	Wild Garlic	0.10	0.01	0.01
Allium stellatum		Prairie Onion	0.20	0.02	0.02	
Anemone canadensis		Canada Anemone	0.10	0.01	0.01	
Aquilegia canadensis		Columbine	0.20	0.02	0.02	
Asclepias syriaca		Common Milkweed	0.25	0.03	0.03	
Asclepias tuberosa		Butterfly Milkweed	0.30	0.03	0.03	
Chamaecrista fasciculata		Partridge Pea	1.50	0.15	0.15	
Coreopsis palmata		Prairie Coreopsis	0.10	0.01	0.01	
Dalea candida		White Prairie Clover	1.00	0.10	0.10	
Dalea purpureum		Purple Prairie Clover	2.80	0.28	0.28	
Lupinus perennis		Wild Lupine	0.10	0.01	0.01	
Penstemon gracilis		Slender Beardtongue	0.10	0.01	0.01	
Potentilla arguta		Prairie Cinquefoil	0.10	0.01	0.01	
Pycnanthemum virginianum		Mountain Mint	0.10	0.01	0.01	
Ratibida columnifera		Long-Headed Coneflower	0.95	0.10	0.10	
Rudbeckia hirta		Black Eyed Susan	0.50	0.05	0.05	
Solidago nemoralis		Old Field Goldenrod	0.10	0.01	0.01	
Solidago speciosa		Showy Goldenrod	0.10	0.01	0.01	
Symphotrichum laevis		Smooth Blue Aster	0.10	0.01	0.01	
Verbena stricta	Hoary Vervain	0.90	0.09	0.09		
Zizia aurea	Golden Alexanders	0.15	0.02	0.02		
Cover Crop:	To be determined at time of seeding			15.00	15.00	

Species subject to change based on availability



8740 77th Street NE Otsego, MN 55362

**Aurora Solar
Array Mix - Heavy Soils**

Date:	10/24/2016
Total Acres:	1.00
Grass lbs/ac:	9.00
Forb lbs/ac:	1.00
Cover Crop lbs/ac:	15.00
Total lbs/ac:	25.00

	Scientific Name	Common Name	% of Mix	PLS lbs/ac	Total PLS lbs
Grasses:	Bouteloua curtipendula	Side-Oats Grama	23.00	2.30	2.30
	Bouteloua gracilis	Blue Grama	16.75	1.68	1.68
	Carex comosa	Bottlebrush Sedge	4.00	0.40	0.40
	Carex radiata	Eastern Star Sedge	0.75	0.08	0.08
	Carex vulpinoidea	Fox Sedge	1.75	0.18	0.18
	Elymus hystrix	Bottlebrush Grass	3.25	0.33	0.33
	Elymus villosus	Silky Wild Rye	6.00	0.60	0.60
	Elymus virginicus	Virginia Wild Rye	10.00	1.00	1.00
	Festuca subverticillata	Nodding Fescue	2.00	0.20	0.20
	Schizachyrium scoparium	Little Bluestem	22.50	2.25	2.25
Forbs:	Agastache foeniculum	Fragrant Giant Hyssop	0.30	0.03	0.03
	Allium canadense	Wild Garlic	0.25	0.03	0.03
	Allium stellatum	Prairie Onion	0.30	0.03	0.03
	Anemone canadensis	Canada Anemone	0.50	0.05	0.05
	Aquilegia canadensis	Columbine	0.25	0.03	0.03
	Chamaecrista fasciculata	Partridge Pea	3.20	0.32	0.32
	Coreopsis palmata	Prairie Coreopsis	0.10	0.01	0.01
	Heliopsis helianthoides	Common Ox-Eye	1.00	0.10	0.10
	Lobelia siphilitica	Great Blue Lobelia	0.10	0.01	0.01
	Potentilla arguta	Prairie Cinquefoil	0.10	0.01	0.01
	Pycnanthemum virginianum	Mountain Mint	0.15	0.02	0.02
	Rudbeckia hirta	Black Eyed Susan	2.00	0.20	0.20
	Solidago speciosa	Showy Goldenrod	0.10	0.01	0.01
	Symphotrichum laevis	Smooth Blue Aster	0.10	0.01	0.01
	Verbena hastata	Blue Vervain	1.00	0.10	0.10
	Veronicastrum virginicum	Culvers's Root	0.05	0.01	0.01
	Zizia aurea	Golden Alexanders	0.50	0.05	0.05
Cover Crop:	To be determined at time of seeding			15.00	15.00

Species subject to change based on availability



**Aurora Solar
Array Mix - Weed Control**

8740 77th Street NE Otsego, MN 55362

Date:	10/24/2016
Total Acres:	1.00
Grass lbs/ac:	9.00
Forb lbs/ac:	1.00
Cover Crop lbs/ac:	15.00
Total lbs/ac:	25.00

	Scientific Name	Common Name	% of Mix	PLS lbs/ac	Total PLS lbs
Grasses:	Bouteloua curtipendula	Side-Oats Grama	30.00	3.00	3.00
	Bouteloua gracilis	Blue Grama	25.00	2.50	2.50
	Carex bicknellii	Bicknell's Sedge	1.50	0.15	0.15
	Carex brevior	Plains Oval Sedge	1.50	0.15	0.15
	Carex radiata	Eastern Star Sedge	1.00	0.10	0.10
	Carex vulpinoidea	Fox Sedge	1.00	0.10	0.10
	Elymus villosus	Silky Wild Rye	5.00	0.50	0.50
	Festuca subverticillata	Nodding Fescue	1.00	0.10	0.10
	Koeleria macrantha	Junegrass	1.00	0.10	0.10
	Schizachyrium scoparium	Little Bluestem	23.00	2.30	2.30
	Forbs:	Agastache foeniculum	Fragrant Giant Hyssop	1.00	0.10
Allium canadense		Wild Garlic	0.30	0.03	0.03
Allium stellatum		Prairie Onion	0.30	0.03	0.03
Asclepias incarnata		Marsh Milkweed	0.25	0.03	0.03
Asclepias syriaca		Common Milkweed	1.25	0.13	0.13
Asclepias tuberosa		Butterfly Milkweed	0.25	0.03	0.03
Chamaecrista fasciculata		Partridge Pea	0.75	0.08	0.08
Dalea purpureum		Purple Prairie Clover	1.25	0.13	0.13
Monarda fistulosa		Wild Bergamot	1.00	0.10	0.10
Monarda punctata		Spotted Bee Balm	0.25	0.03	0.03
Penstemon gracilis		Slender Beardtongue	0.10	0.01	0.01
Potentilla arguta		Prairie Cinquefoil	0.25	0.03	0.03
Pycnanthemum virginianum		Mountain Mint	0.10	0.01	0.01
Thalictrum dioicum		Early Meadow Rue	0.10	0.01	0.01
Tradescantia bracteata		Prairie Spiderwort	0.10	0.01	0.01
Verbena hastata		Blue Vervain	0.60	0.06	0.06
Verbena stricta		Hoary Vervain	1.00	0.10	0.10
Zizia aptera		Heart-leaf Golden Alexanders	0.15	0.02	0.02
Zizia aurea	Golden Alexanders	1.00	0.10	0.10	
Cover Crop:	To be determined at time of seeding			15.00	15.00

Species subject to change based on availability



**Aurora Solar
Prairie Mix - Xeric**

8740 77th Street NE Otsego, MN 55362

Date:	10/24/2016
Total Acres:	1.00
Grass lbs/ac:	9.75
Forb lbs/ac:	3.25
Cover Crop lbs/ac:	15.00
Total lbs/ac:	28.00

	Scientific Name	Common Name	% of Mix	PLS lbs/ac	Total PLS lbs
Grasses:	Bouteloua curtipendula	Side-Oats Grama	24.00	3.12	3.12
	Bouteloua gracilis	Blue Grama	25.00	3.25	3.25
	Carex bicknellii	Bicknell's Sedge	2.00	0.26	0.26
	Elymus trachycaulus	Slender Wheat Grass	3.00	0.39	0.39
	Koeleria macrantha	Junegrass	2.00	0.26	0.26
	Schizachyrium scoparium	Little Bluestem	9.00	1.17	1.17
	Sporobolus cryptandrus	Sand Dropseed	10.00	1.30	1.30
Forbs:	Chamaecrista fasciculata	Partridge Pea	10.00	1.30	1.30
	Dalea candida	White Prairie Clover	1.00	0.13	0.13
	Dalea purpureum	Purple Prairie Clover	4.00	0.52	0.52
	Echinacea pallida	Pale Purple Coneflower	1.00	0.13	0.13
	Lupinus perennis	Wild Lupine	1.00	0.13	0.13
	Monarda punctata	Spotted Bee Balm	1.00	0.13	0.13
	Penstemon gracilis	Slender Beardtongue	0.25	0.03	0.03
	Potentilla arguta	Prairie Cinquefoil	0.25	0.03	0.03
	Ratibida columnifera	Long-Headed Coneflower	3.00	0.39	0.39
	Rudbeckia hirta	Black Eyed Susan	1.50	0.20	0.20
	Solidago nemoralis	Old Field Goldenrod	0.20	0.03	0.03
	Tradescantia bracteata	Prairie Spiderwort	0.25	0.03	0.03
	Verbena stricta	Hoary Vervain	1.05	0.14	0.14
	Zizia aurea	Golden Alexanders	0.50	0.07	0.07
Cover Crop:	To be determined at time of seeding			15.00	15.00

Species subject to change based on availability



**Aurora Solar
Prairie Mix - Short Dry**

Date:	10/24/2016
Total Acres:	1.00
Grass lbs/ac:	7.50
Forb lbs/ac:	2.50
Cover Crop lbs/ac:	15.00
Total lbs/ac:	25.00

8740 77th Street NE Otsego, MN 55362

	Scientific Name	Common Name	% of Mix	PLS lbs/ac	Total PLS lbs
Grasses:	Bouteloua curtipendula	Side-Oats Grama	22.00	2.20	2.20
	Bouteloua gracilis	Blue Grama	14.00	1.40	1.40
	Carex bicknellii	Bicknell's Sedge	3.00	0.30	0.30
	Elymus trachycaulus	Slender Wheat Grass	3.00	0.30	0.30
	Elymus villosus	Silky Wild Rye	3.00	0.30	0.30
	Koeleria macrantha	Junegrass	2.00	0.20	0.20
	Schizachyrium scoparium	Little Bluestem	20.00	2.00	2.00
	Sporobolus cryptandrus	Sand Dropseed	5.00	0.50	0.50
	Sporobolus heterolepis	Prairie Dropseed	3.00	0.30	0.30
	Forbs:	Agastache foeniculum	Fragrant Giant Hyssop	0.10	0.01
Amorpha canescens		Leadplant	1.50	0.15	0.15
Asclepias syriaca		Common Milkweed	4.50	0.45	0.45
Asclepias tuberosa		Butterfly Milkweed	1.00	0.10	0.10
Asclepias verticillata		Whorled Milkweed	0.35	0.04	0.04
Aster oolentangiensis		Sky-Blue Aster	0.50	0.05	0.05
Chamaecrista fasciculata		Partridge Pea	5.00	0.50	0.50
Coreopsis palmata		Prairie Coreopsis	0.50	0.05	0.05
Dalea candida		White Prairie Clover	1.00	0.10	0.10
Dalea purpureum		Purple Prairie Clover	4.00	0.40	0.40
Echinacea pallida		Pale Purple Coneflower	0.75	0.08	0.08
Monarda punctata		Spotted Bee Balm	0.50	0.05	0.05
Penstemon gracilis		Slender Beardtongue	0.25	0.03	0.03
Potentilla arguta		Prairie Cinquefoil	0.25	0.03	0.03
Pycnanthemum virginianum		Mountain Mint	0.25	0.03	0.03
Ratibida columnifera		Long-Headed Coneflower	1.00	0.10	0.10
Rudbeckia hirta		Black Eyed Susan	1.10	0.11	0.11
Solidago nemoralis		Old Field Goldenrod	0.20	0.02	0.02
Solidago rigida		Stiff Goldenrod	1.25	0.13	0.13
Verbena stricta		Hoary Vervain	0.75	0.08	0.08
Zizia aurea	Golden Alexanders	0.25	0.03	0.03	
Cover Crop:	To be determined at time of seeding			15.00	15.00

Species subject to change based on availability



8740 77th Street NE Otsego, MN 55362

**Aurora Solar
Prairie Mix - Mesic Soils**

Date:	10/24/2016
Total Acres:	1.00
Grass lbs/ac:	7.50
Forb lbs/ac:	2.50
Cover Crop lbs/ac:	15.00
Total lbs/ac:	25.00

	Scientific Name	Common Name	% of Mix	PLS lbs/ac	Total PLS lbs
Grasses:	Andropogon gerardii	Big Bluestem	2.00	0.20	0.20
	Bouteloua curtipendula	Side-Oats Grama	20.00	2.00	2.00
	Bouteloua gracilis	Blue Grama	10.00	1.00	1.00
	Elymus canadensis	Canada Wild Rye	5.00	0.50	0.50
	Elymus virginicus	Virginia Wild Rye	5.00	0.50	0.50
	Koeleria macrantha	Junegrass	2.00	0.20	0.20
	Schizachyrium scoparium	Little Bluestem	23.00	2.30	2.30
	Sorghastrum nutans	Indian Grass	6.00	0.60	0.60
	Sporobolus heterolepis	Prairie Dropseed	2.00	0.20	0.20
	Forbs:	Agastache foeniculum	Fragrant Giant Hyssop	0.10	0.01
Amorpha canescens		Leadplant	1.50	0.15	0.15
Anemone canadensis		Canada Anemone	0.75	0.08	0.08
Asclepias syriaca		Common Milkweed	6.15	0.62	0.62
Asclepias tuberosa		Butterfly Milkweed	1.00	0.10	0.10
Aster oolentangiensis		Sky-Blue Aster	0.50	0.05	0.05
Aster novae-angliae		New England Aster	0.45	0.05	0.05
Chamaecrista fasciculata		Partridge Pea	1.00	0.10	0.10
Coreopsis palmata		Prairie Coreopsis	0.50	0.05	0.05
Dalea purpureum		Purple Prairie Clover	4.00	0.40	0.40
Desmodium canadense		Canada Tick Trefoil	1.00	0.10	0.10
Echinacea pallida		Pale Purple Coneflower	0.75	0.08	0.08
Liatris pycnostachya		Prairie Blazing Star	1.00	0.10	0.10
Monarda fistulosa		Wild Bergamot	0.50	0.05	0.05
Potentilla arguta		Prairie Cinquefoil	0.25	0.03	0.03
Pycnanthemum virginianum		Mountain Mint	0.25	0.03	0.03
Ratibida pinnata		Yellow Coneflower	1.00	0.10	0.10
Rudbeckia hirta		Black Eyed Susan	1.25	0.13	0.13
Solidago rigida		Stiff Goldenrod	1.80	0.18	0.18
Verbena stricta		Hoary Vervain	0.75	0.08	0.08
Zizia aurea	Golden Alexanders	0.50	0.05	0.05	
Cover Crop:	To be determined at time of seeding			15.00	15.00

Species subject to change based on availability



**Aurora Solar
Prairie Mix - Weed Control**

8740 77th Street NE Otsego, MN 55362

Date:	10/24/2016
Total Acres:	1.00
Grass lbs/ac:	7.50
Forb lbs/ac:	2.50
Cover Crop lbs/ac:	15.00
Total lbs/ac:	25.00

	Scientific Name	Common Name	% of Mix	PLS lbs/ac	Total PLS lbs
Grasses:	Andropogon gerardii	Big Bluestem	2.00	0.20	0.20
	Bouteloua curtipendula	Side-Oats Grama	22.00	2.20	2.20
	Bouteloua gracilis	Blue Grama	10.00	1.00	1.00
	Elymus canadensis	Canada Wild Rye	7.00	0.70	0.70
	Koeleria macrantha	Junegrass	2.00	0.20	0.20
	Schizachyrium scoparium	Little Bluestem	24.00	2.40	2.40
	Sorghastrum nutans	Indian Grass	6.00	0.60	0.60
	Sporobolus heterolepis	Prairie Dropseed	2.00	0.20	0.20
Forbs:	Agastache foeniculum	Fragrant Giant Hyssop	2.00	0.20	0.20
	Allium canadense	Wild Garlic	1.00	0.10	0.10
	Allium stellatum	Prairie Onion	1.00	0.10	0.10
	Asclepias incarnata	Marsh Milkweed	1.00	0.10	0.10
	Asclepias syriaca	Common Milkweed	4.00	0.40	0.40
	Asclepias tuberosa	Butterfly Milkweed	0.50	0.05	0.05
	Dalea purpureum	Purple Prairie Clover	6.00	0.60	0.60
	Monarda fistulosa	Wild Bergamot	1.50	0.15	0.15
	Monarda punctata	Spotted Bee Balm	0.50	0.05	0.05
	Penstemon gracilis	Slender Beardtongue	0.20	0.02	0.02
	Potentilla arguta	Prairie Cinquefoil	0.50	0.05	0.05
	Pycnanthemum virginianum	Mountain Mint	0.25	0.03	0.03
	Thalictrum dioicum	Early Meadow Rue	0.25	0.03	0.03
	Tradescantia bracteata	Prairie Spiderwort	0.25	0.03	0.03
	Verbena hastata	Blue Vervain	1.50	0.15	0.15
	Verbena stricta	Hoary Vervain	2.05	0.21	0.21
	Zizia aptera	Heart-leaf Golden Alexanders	0.50	0.05	0.05
Zizia aurea	Golden Alexanders	2.00	0.20	0.20	
Cover Crop:	To be determined at time of seeding			15.00	15.00

Species subject to change based on availability



8740 77th Street NE Otsego, MN 55362

**Aurora Solar
Wet Meadow - Array**

Date:	10/24/2016
Total Acres:	1.00
Grass lbs/ac:	3.60
Sedge/Rush lbs/ac:	1.08
Forb lbs/ac:	1.32
Cover Crop lbs/ac:	15.00
Total lbs/ac:	21.00

	Scientific Name	Common Name	% of Mix	PLS lbs/ac	Total PLS lbs
Grasses:	Bromus ciliatus	Fringed Brome	20.00	1.20	1.20
	Elymus virginicus	Virginia Wild Rye	25.00	1.50	1.50
	Leersia oryzoides	Rice Cut Grass	5.00	0.30	0.30
	Poa palustris	Fowl Bluegrass	10.00	0.60	0.60
Sedges/Rushes:	Carex comosa	Bottlebrush Sedge	7.00	0.42	0.42
	Carex scoparia	Broom Sedge	2.00	0.12	0.12
	Carex stipata	Common Fox Sedge	3.00	0.18	0.18
	Carex vulpinoidea	Fox Sedge	2.50	0.15	0.15
	Juncus tenuis	Path Rush	0.50	0.03	0.03
	Scirpus atrovirens	Green Bulrush	3.00	0.18	0.18
Forbs:	Asclepias incarnata	Marsh Milkweed	4.80	0.29	0.29
	Asclepias syriaca	Common Milkweed	1.25	0.08	0.08
	Eupatorium perfoliatum	Boneset	0.40	0.02	0.02
	Heliopsis helianthoides	Common Ox-Eye	5.00	0.30	0.30
	Iris versicolor	Northern Blue Flag Iris	2.00	0.12	0.12
	Lobelia siphilitica	Great Blue Lobelia	0.15	0.01	0.01
	Mimulus ringens	Monkey Flower	1.00	0.06	0.06
	Pycnanthemum virginianum	Mountain Mint	1.20	0.07	0.07
	Solidago rigida	Stiff Goldenrod	0.80	0.05	0.05
	Symphotrichum novae-angliae	New England Aster	0.60	0.04	0.04
	Thalictrum dioicum	Early Meadow Rue	0.20	0.01	0.01
	Verbena hastata	Blue Vervain	2.60	0.16	0.16
	Zizia aurea	Golden Alexanders	2.00	0.12	0.12
Cover Crop:	To be determined at time of seeding			15.00	15.00

Species subject to change based on availability



8740 77th Street NE Otsego, MN 55362

**Aurora Solar
Wet Meadow - Perimeter**

Date:	10/24/2016
Total Acres:	1.00
Grass lbs/ac:	3.00
Sedge/Rush lbs/ac:	0.90
Forb lbs/ac:	1.10
Cover Crop lbs/ac:	15.00
Total lbs/ac:	20.00

	Scientific Name	Common Name	% of Mix	PLS lbs/ac	Total PLS lbs
Grasses:	Bromus ciliatus	Fringed Brome	22.00	1.10	1.10
	Calamagrostis canadensis	Blue-Joint Grass	1.00	0.05	0.05
	Elymus virginicus	Virginia Wild Rye	20.00	1.00	1.00
	Glyceria grandis	Reed Manna Grass	5.00	0.25	0.25
	Leersia oryzoides	Rice Cut Grass	5.00	0.25	0.25
	Poa palustris	Fowl Bluegrass	7.00	0.35	0.35
Sedges/Rushes:	Carex comosa	Bottlebrush Sedge	4.80	0.24	0.24
	Carex scoparia	Broom Sedge	1.00	0.05	0.05
	Carex stipata	Common Fox Sedge	3.40	0.17	0.17
	Carex vulpinoidea	Fox Sedge	2.80	0.14	0.14
	Juncus tenuis	Path Rush	0.80	0.04	0.04
	Scirpus atrovirens	Green Bulrush	3.60	0.18	0.18
	Scirpus cyperinus	Woolgrass	1.60	0.08	0.08
Forbs:	Asclepias incarnata	Marsh Milkweed	4.80	0.24	0.24
	Asclepias syriaca	Common Milkweed	0.20	0.01	0.01
	Eupatorium maculatum	Joe-Pye Weed	0.40	0.02	0.02
	Eupatorium perfoliatum	Boneset	0.40	0.02	0.02
	Helenium autumnale	Sneezeweed	0.60	0.03	0.03
	Heliopsis helianthoides	Common Ox-Eye	5.00	0.25	0.25
	Mimulus ringens	Monkey Flower	0.60	0.03	0.03
	Pycnanthemum virginianum	Mountain Mint	1.20	0.06	0.06
	Silphium perfoliatum	Cup Plant	1.20	0.06	0.06
	Solidago rigida	Stiff Goldenrod	0.20	0.01	0.01
	Symphyotrichum novae-angliae	New England Aster	0.60	0.03	0.03
	Symphyotrichum puniceum	Swamp Aster	1.40	0.07	0.07
	Thalictrum dasycarpum	Purple Meadow Rue	0.20	0.01	0.01
	Verbena hastata	Blue Vervain	2.60	0.13	0.13
	Vernonia fasciculata	Ironweed	0.60	0.03	0.03
Zizia aurea	Golden Alexanders	2.00	0.10	0.10	
Cover Crop:	To be determined at time of seeding			15.00	15.00

Species subject to change based on availability

Appendix 2



Legend

- DENOTES FACILITY SITE CONTROL
- x- DENOTES PROPOSED SECURITY FENCE
- Prairie Mesic Mix - 33.8 AC
- Array Mesic Mix - 41.65 AC
- Array Heavy Soils Mix - 23.45 AC
- Wet Meadow Array - 0.1 AC

NOTES:

1. SEEDING TO BE COMPLETED USING A DRILL SEED METHOD WHERE FEASIBLE. WHERE DRILL SEEDING IS NOT FEASIBLE THE APPLICATION OF SEED VIA ALTERNATE METHODS INCLUDING BUT NOT LIMITED TO, BROADCAST OR HYDROSEEDING.
2. BROADCAST SEEDING SHALL BE COMPLETED IF AMBIENT SOIL TEMPERATURE IS CONSISTENTLY 60 DEGREES F OR LOWER
3. IF NOT FROST SEEDING, DRILLING SHOULD OCCUR BETWEEN APRIL 1ST AND JUNE 1ST
4. THE CONTRACTOR SHALL NOT TILL OR FERTILIZE THE FIELDS, IF THE GROUND NEEDS TO BE TILLED, CONTRACTOR SHALL USE A VERTICAL PLOW

8740 77th Street NE, Osago, MN 55362

Aurora Solar
Prairie Mix - Mesic Soils

Date:	10/24/2016
Total Acres:	1.00
Grass lbs/ac:	7.50
Forb lbs/ac:	2.50
Cover Crop lbs/ac:	15.00
Total lbs/ac:	25.00

8740 77th Street NE, Osago, MN 55362

Aurora Solar
Array Mix - Mesic Soils

Date:	10/24/2016
Total Acres:	1.00
Grass lbs/ac:	9.00
Forb lbs/ac:	1.00
Cover Crop lbs/ac:	15.00
Total lbs/ac:	25.00

8740 77th Street NE, Osago, MN 55362

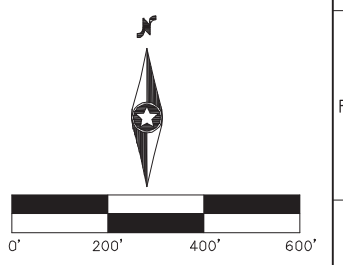
Aurora Solar
Array Mix - Heavy Soils

Date:	10/24/2016
Total Acres:	1.00
Grass lbs/ac:	9.00
Forb lbs/ac:	1.00
Cover Crop lbs/ac:	15.00
Total lbs/ac:	25.00

8740 77th Street NE, Osago, MN 55362

Aurora Solar
Wet Meadow - Array

Date:	10/24/2016
Total Acres:	1.00
Grass lbs/ac:	9.00
Forb lbs/ac:	1.00
Cover Crop lbs/ac:	15.00
Total lbs/ac:	25.00



Scientific Name	Common Name	% of Mix	PLS lbs/ac	Total PLS lbs
Grasses:				
Andropogon gerardi	Big Bluestem	2.00	0.20	0.20
Bouteloua curtipendula	Side-Oats Grama	20.00	2.00	2.00
Bouteloua gracilis	Blue Grama	10.00	1.00	1.00
Elymus canadensis	Canada Wild Rye	5.00	0.50	0.50
Elymus virginicus	Virginia Wild Rye	5.00	0.50	0.50
Koeleria macrantha	Junegrass	2.00	0.20	0.20
Schizachyrium scoparium	Little Bluestem	23.00	2.30	2.30
Sorghastrum nutans	Indian Grass	6.00	0.60	0.60
Sporobolus heterolepis	Prairie Dropseed	2.00	0.20	0.20
Forbs:				
Agastache foeniculum	Fragrant Giant Hyssop	0.10	0.01	0.01
Aster sp.	Leadplant	1.50	0.15	0.15
Anemone canadensis	Canada Anemone	0.75	0.08	0.08
Asclepias syriaca	Common Milkweed	6.15	0.62	0.62
Asclepias tuberosa	Butterfly Milkweed	1.00	0.10	0.10
Aster novae-angliae	Sky Blue Aster	0.50	0.05	0.05
Aster novae-angliae	New England Aster	0.45	0.05	0.05
Chamaecrista fasciculata	Partridge Pea	1.00	0.10	0.10
Coreopsis palmata	Prairie Coreopsis	0.50	0.05	0.05
Dalea purpurea	Purple Prairie Clover	4.00	0.40	0.40
Desmodium canadense	Canada Tick Trefoil	1.00	0.10	0.10
Echinacea pallida	Pink Purple Coneflower	0.75	0.08	0.08
Liatris pycnostachya	Prairie Blazing Star	1.00	0.10	0.10
Monarda fistulosa	Wild Bergamot	0.50	0.05	0.05
Potentilla arguta	Prairie Cinquefoil	0.25	0.03	0.03
Pycnanthemum virginianum	Mountain Mint	0.25	0.03	0.03
Ratibida pinnata	Yellow Coneflower	1.00	0.10	0.10
Rudbeckia hirta	Black Eyed Susan	1.25	0.13	0.13
Solidago rigida	Stiff Goldenrod	1.80	0.18	0.18
Verbena stricta	Hoary Vervain	0.75	0.08	0.08
Zizia aurea	Golden Alexanders	0.50	0.05	0.05
Cover Crop:	To be determined at time of seeding	15.00	15.00	15.00

Scientific Name	Common Name	% of Mix	PLS lbs/ac	Total PLS lbs
Grasses:				
Bouteloua curtipendula	Side-Oats Grama	35.00	3.50	3.50
Bouteloua gracilis	Blue Grama	10.00	1.00	1.00
Bouteloua inermis	Bicknell's Sedge	2.00	0.20	0.20
Carex brenor	Prairie Oval Sedge	1.00	0.10	0.10
Carex vulpinoidea	Fox Sedge	1.00	0.10	0.10
Elymus villosus	Silky Wild Rye	5.00	0.50	0.50
Elymus virginicus	Virginia Wild Rye	10.00	1.00	1.00
Festuca subsericeolata	Nooding Fescue	1.00	0.10	0.10
Koeleria macrantha	Junegrass	2.75	0.28	0.28
Schizachyrium scoparium	Little Bluestem	14.50	1.45	1.45
Sporobolus olandicus	Sand Dropseed	5.75	0.58	0.58
Sporobolus heterolepis	Prairie Dropseed	2.00	0.20	0.20
Forbs:				
Agastache foeniculum	Fragrant Giant Hyssop	0.25	0.03	0.03
Allium canadense	Wild Garlic	0.10	0.01	0.01
Allium stellatum	Prairie Onion	0.20	0.02	0.02
Anemone canadensis	Canada Anemone	0.10	0.01	0.01
Columbine	Columbine	0.20	0.02	0.02
Anemone canadensis	Canada Anemone	0.25	0.03	0.03
Asclepias syriaca	Common Milkweed	0.30	0.03	0.03
Asclepias tuberosa	Butterfly Milkweed	1.50	0.15	0.15
Chamaecrista fasciculata	Partridge Pea	1.50	0.15	0.15
Coreopsis palmata	Prairie Coreopsis	0.10	0.01	0.01
Dalea candida	White Prairie Clover	1.00	0.10	0.10
Dalea purpurea	Purple Prairie Clover	2.80	0.28	0.28
Lupinus perennis	Wild Lupine	0.10	0.01	0.01
Penstemon gracilis	Slender Beardtongue	0.10	0.01	0.01
Potentilla arguta	Prairie Cinquefoil	0.10	0.01	0.01
Pycnanthemum virginianum	Mountain Mint	0.10	0.01	0.01
Ratibida pinnata	Long-Headed Coneflower	0.85	0.10	0.10
Rudbeckia hirta	Black Eyed Susan	0.50	0.05	0.05
Solidago nemoralis	Old Field Goldenrod	0.10	0.01	0.01
Solidago speciosa	Showy Goldenrod	0.10	0.01	0.01
Symphyotrichum laevis	Smooth Blue Aster	0.10	0.01	0.01
Verbena stricta	Hoary Vervain	0.75	0.08	0.08
Veronica stricta	Golden Alexanders	0.15	0.02	0.02
Zizia aurea	Golden Alexanders	0.50	0.05	0.05
Cover Crop:	To be determined at time of seeding	15.00	15.00	15.00

Scientific Name	Common Name	% of Mix	PLS lbs/ac	Total PLS lbs
Grasses:				
Bouteloua curtipendula	Side-Oats Grama	23.00	2.30	2.30
Bouteloua gracilis	Blue Grama	16.75	1.68	1.68
Carex comosa	Bottlebrush Sedge	4.00	0.40	0.40
Carex radiata	Eastern Star Sedge	0.75	0.08	0.08
Carex vulpinoidea	Fox Sedge	1.75	0.18	0.18
Elymus hystrix	Bottlebrush Grass	3.25	0.33	0.33
Elymus villosus	Silky Wild Rye	6.00	0.60	0.60
Elymus virginicus	Virginia Wild Rye	10.00	1.00	1.00
Festuca subsericeolata	Nooding Fescue	2.00	0.20	0.20
Schizachyrium scoparium	Little Bluestem	22.50	2.25	2.25
Forbs:				
Agastache foeniculum	Fragrant Giant Hyssop	0.30	0.03	0.03
Allium canadense	Wild Garlic	0.25	0.03	0.03
Allium stellatum	Prairie Onion	0.30	0.03	0.03
Anemone canadensis	Canada Anemone	0.50	0.05	0.05
Columbine	Columbine	0.25	0.03	0.03
Anemone canadensis	Canada Anemone	0.25	0.03	0.03
Asclepias syriaca	Common Milkweed	0.25	0.03	0.03
Asclepias tuberosa	Butterfly Milkweed	1.50	0.15	0.15
Chamaecrista fasciculata	Partridge Pea	3.20	0.32	0.32
Coreopsis palmata	Prairie Coreopsis	0.10	0.01	0.01
Dalea candida	White Prairie Clover	1.00	0.10	0.10
Dalea purpurea	Purple Prairie Clover	1.00	0.10	0.10
Lupinus perennis	Wild Lupine	1.00	0.10	0.10
Penstemon gracilis	Slender Beardtongue	0.10	0.01	0.01
Potentilla arguta	Prairie Cinquefoil	0.10	0.01	0.01
Pycnanthemum virginianum	Mountain Mint	0.15	0.02	0.02
Ratibida pinnata	Long-Headed Coneflower	0.10	0.01	0.01
Rudbeckia hirta	Black Eyed Susan	2.00	0.20	0.20
Solidago speciosa	Showy Goldenrod	0.10	0.01	0.01
Symphyotrichum laevis	Smooth Blue Aster	0.10	0.01	0.01
Verbena hastata	Blue Vervain	1.00	0.10	0.10
Veronica stricta	Culver's Root	0.05	0.01	0.01
Zizia aurea	Golden Alexanders	0.50	0.05	0.05
Cover Crop:	To be determined at time of seeding	15.00	15.00	15.00

Scientific Name	Common Name	% of Mix	PLS lbs/ac	Total PLS lbs
Grasses:				
Bromus ciliatus	Fringed Brome	20.00	2.00	2.00
Elymus virginicus	Virginia Wild Rye	25.00	2.50	2.50
Lolium perenne	Road Cut Grass	5.00	0.50	0.50
Poa palustris	Fowl Bluegrass	10.00	1.00	1.00
Sedges/Rushes:				
Carex comosa	Bottlebrush Sedge	7.00	0.70	0.70
Carex scoparia	Broom Sedge	2.00	0.20	0.20
Carex stipitata	Common Fox Sedge	3.00	0.30	0.30
Carex vulpinoidea	Fox Sedge	2.50	0.25	0.25
Juncus tenuis	Path Rush	0.50	0.05	0.05
Scirpus atrovirens	Green Bulrush	3.00	0.30	0.30
Forbs:				
Asclepias incarnata	Marsh Milkweed	4.80	0.29	0.29
Asclepias syriaca	Common Milkweed	1.25	0.08	0.08
Epipactis atrorubens	Boneset	0.40	0.02	0.02
Helleborus helianthoides	Common Ox-Eye	5.00	0.30	0.30
Iris versicolor	Northern Blue Flag Iris	2.00	0.12	0.12
Lobelia siphilitica	Great Blue Lobelia	0.15	0.01	0.01
Mimulus ringens	Monkey Flower	1.00	0.06	0.06
Pycnanthemum virginianum	Mountain Mint	1.20	0.07	0.07
Solidago rigida	Stiff Goldenrod	0.80	0.05	0.05
Symphyotrichum novae-angliae	New England Aster	0.60	0.04	0.04
Thalictrum dioicum	Early Meadow Rue	0.20	0.01	0.01
Verbena hastata	Blue Vervain	2.60	0.16	0.16
Zizia aurea	Golden Alexanders	2.00	0.12	0.12
Cover Crop:	To be determined at time of seeding	15.00	15.00	15.00

Issued For Construction

Biosar America LLC
5962 La Pl Cx #220
Carlsbad, CA 92008

Aurora Distributed Solar, LLC
One Tech Drive, Suite 220
Andover, MA 01810

I hereby certify that this plan was prepared by me or under my direct supervision and that I am a duly licensed PROFESSIONAL ENGINEER under the laws of the State of Minnesota.

Print Name: August Dean Christensen

Signature:

Date: 04/27/2016

License No.: 47173

X	X	X	X
REVISION	DATE	DESCRIPTION	PREPARED
ALBANY SOLAR, LLC	ALBANY SOLAR, LLC	ALBANY SOLAR, LLC	ALBANY SOLAR, LLC
DATE	DATE	DATE	DATE
04/27/2016			

Seeding Plan

SCALE: SEE LEFT

SCALE: SEE LEFT



**Aurora Solar
Array Mix - Sandy Soils**

Date: 10/24/2016
 Total Acres: 1.00
 Grass lbs/ac: 11.70
 Forb lbs/ac: 1.30
 Cover Crop lbs/ac: 15.00
 Total lbs/ac: 28.00

Scientific Name	Common Name	% of Mix	PLS lbs/ac	Total PLS lbs
Grasses:				
Bouteloua curtipendula	Side-Oats Grama	25.00	3.25	3.25
Bouteloua gracilis	Blue Grama	25.00	3.25	3.25
Carex bicknellii	Bicknell's Sedge	2.50	0.33	0.33
Carex brevior	Plains Oval Sedge	1.50	0.20	0.20
Elymus trachycaulis	Slender Wheat Grass	5.00	0.65	0.65
Elymus villosus	Silky Wild Rye	5.00	0.65	0.65
Koeleria macrantha	Junegrass	2.00	0.26	0.26
Schizachyrium scoparium	Little Bluestem	10.00	1.30	1.30
Sporobolus cryptandrus	Sand Dropseed	14.00	1.82	1.82
Forbs:				
Allium canadense	Wild Garlic	0.20	0.03	0.03
Allium stellatum	Prairie Onion	0.20	0.03	0.03
Aquilegia canadensis	Columbine	0.15	0.02	0.02
Asclepias tuberosa	Butterfly Milkweed	0.20	0.03	0.03
Chamaecrista fasciculata	Partridge Pea	4.00	0.60	0.60
Dalea purpureum	Purple Prairie Clover	0.80	0.10	0.10
Lupinus perennis	Wild Lupine	0.50	0.07	0.07
Monarda punctata	Spotted Bee Balm	0.25	0.03	0.03
Penstemon gracilis	Slender Beardtongue	0.10	0.01	0.01
Ratibida columnifera	Long-Headed Coneflower	1.70	0.22	0.22
Rudbeckia hirta	Black Eyed Susan	0.25	0.03	0.03
Solidago nemoralis	Old Field Goldenrod	0.10	0.01	0.01
Verbena stricta	Hoary Vervain	0.75	0.10	0.10
Zizia aurea	Golden Alexanders	0.20	0.03	0.03
Cover Crop:	To be determined at time of seeding	15.00	15.00	15.00



**Aurora Solar
Prairie Mix - Mesic Soils**

Date: 10/24/2016
 Total Acres: 1.00
 Grass lbs/ac: 7.50
 Forb lbs/ac: 2.50
 Cover Crop lbs/ac: 15.00
 Total lbs/ac: 25.00

Scientific Name	Common Name	% of Mix	PLS lbs/ac	Total PLS lbs
Grasses:				
Andropogon gerardii	Big Bluestem	2.00	0.20	0.20
Bouteloua curtipendula	Side-Oats Grama	20.00	2.00	2.00
Bouteloua gracilis	Blue Grama	10.00	1.00	1.00
Elymus canadensis	Canada Wild Rye	5.00	0.50	0.50
Elymus virginicus	Virginia Wild Rye	5.00	0.50	0.50
Koeleria macrantha	Junegrass	2.00	0.20	0.20
Schizachyrium scoparium	Little Bluestem	23.00	2.30	2.30
Sorghastrum nutans	Indian Grass	6.00	0.60	0.60
Sporobolus heterolepis	Prairie Dropseed	2.00	0.20	0.20
Forbs:				
Agastache foeniculum	Fragrant Giant Hyssop	0.10	0.01	0.01
Amorpha canescens	Leadplant	1.50	0.15	0.15
Anemone canadensis	Canada Anemone	0.75	0.08	0.08
Asclepias syriaca	Common Milkweed	6.15	0.62	0.62
Asclepias tuberosa	Butterfly Milkweed	1.00	0.10	0.10
Aster oolentangensis	Sky-Blue Aster	0.50	0.05	0.05
Aster novae-angliae	New England Aster	0.45	0.05	0.05
Chamaecrista fasciculata	Partridge Pea	1.00	0.10	0.10
Coreopsis palmata	Prairie Coreopsis	0.50	0.05	0.05
Dalea purpureum	Purple Prairie Clover	4.00	0.40	0.40
Desmodium canadense	Canada Tick Trefol	1.00	0.10	0.10
Echinacea pallida	Pale Purple Coneflower	0.75	0.08	0.08
Liatris pycnostachya	Prairie Blazing Star	1.00	0.10	0.10
Monarda fistulosa	Wild Bergamot	0.50	0.05	0.05
Potentilla arguta	Prairie Cinquefoil	0.25	0.03	0.03
Pycnanthemum virginianum	Mountain Mint	0.25	0.03	0.03
Ratibida pinnata	Yellow Coneflower	1.00	0.10	0.10
Rudbeckia hirta	Black Eyed Susan	1.25	0.13	0.13
Solidago rigida	Stiff Goldenrod	1.80	0.18	0.18
Verbena stricta	Hoary Vervain	0.75	0.08	0.08
Zizia aurea	Golden Alexanders	0.50	0.05	0.05
Cover Crop:	To be determined at time of seeding	15.00	15.00	15.00



**Aurora Solar
Array Mix - Heavy Soils**

Date: 10/24/2016
 Total Acres: 1.00
 Grass lbs/ac: 9.00
 Forb lbs/ac: 1.00
 Cover Crop lbs/ac: 15.00
 Total lbs/ac: 25.00

Scientific Name	Common Name	% of Mix	PLS lbs/ac	Total PLS lbs
Grasses:				
Bouteloua curtipendula	Side-Oats Grama	23.00	2.30	2.30
Bouteloua gracilis	Blue Grama	16.75	1.68	1.68
Carex comosa	Bottlebrush Sedge	4.00	0.40	0.40
Carex radiata	Eastern Star Sedge	0.75	0.08	0.08
Carex vulpinoidea	Fox Sedge	1.75	0.18	0.18
Elymus hystrix	Bottlebrush Grass	3.25	0.33	0.33
Elymus villosus	Silky Wild Rye	6.00	0.60	0.60
Elymus virginicus	Virginia Wild Rye	10.00	1.00	1.00
Festuca subverticillata	Nodding Fescue	2.00	0.20	0.20
Schizachyrium scoparium	Little Bluestem	22.50	2.25	2.25
Forbs:				
Agastache foeniculum	Fragrant Giant Hyssop	0.30	0.03	0.03
Allium canadense	Wild Garlic	0.25	0.03	0.03
Allium stellatum	Prairie Onion	0.30	0.03	0.03
Anemone canadensis	Canada Anemone	0.50	0.05	0.05
Aquilegia canadensis	Columbine	0.25	0.03	0.03
Chamaecrista fasciculata	Partridge Pea	3.20	0.32	0.32
Coreopsis palmata	Prairie Coreopsis	0.10	0.01	0.01
Helopsis helianthoides	Common Ox-Eye	1.00	0.10	0.10
Lobelia siphilitica	Great Blue Lobelia	0.10	0.01	0.01
Potentilla arguta	Prairie Cinquefoil	0.15	0.02	0.02
Pycnanthemum virginianum	Mountain Mint	0.15	0.02	0.02
Rudbeckia hirta	Black Eyed Susan	2.00	0.20	0.20
Solidago speciosa	Showy Goldenrod	0.10	0.01	0.01
Symphoricarpos laevis	Smooth Blue Aster	0.10	0.01	0.01
Verbena hastata	Blue Vervain	1.00	0.10	0.10
Veronicastrum virginicum	Culver's Root	0.05	0.01	0.01
Zizia aurea	Golden Alexanders	0.50	0.05	0.05
Cover Crop:	To be determined at time of seeding	15.00	15.00	15.00



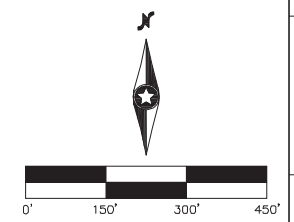
**Aurora Solar
Wet Meadow - Array**

Date: 10/24/2016
 Total Acres: 1.00
 Grass lbs/ac: 3.60
 Sedge/Rush lbs/ac: 1.08
 Forb lbs/ac: 1.32
 Cover Crop lbs/ac: 15.00
 Total lbs/ac: 21.00

Scientific Name	Common Name	% of Mix	PLS lbs/ac	Total PLS lbs
Grasses:				
Bromus ciliatus	Fringed Bromo	20.00	1.20	1.20
Elymus virginicus	Virginia Wild Rye	25.00	1.50	1.50
Leersia oryzoides	Rice Cut Grass	5.00	0.30	0.30
Poa palustris	Fowl Bluegrass	10.00	0.60	0.60
Sedges/Rushes:				
Carex comosa	Bottlebrush Sedge	7.00	0.42	0.42
Carex scoparia	Broom Sedge	2.00	0.12	0.12
Carex stipata	Common Fox Sedge	3.00	0.18	0.18
Carex vulpinoidea	Fox Sedge	2.50	0.15	0.15
Juncus tenuis	Path Rush	0.50	0.03	0.03
Scirpus atrovirens	Green Bulrush	3.00	0.18	0.18
Forbs:				
Asclepias incarnata	Marsh Milkweed	4.80	0.29	0.29
Asclepias syriaca	Common Milkweed	1.25	0.08	0.08
Eupatorium perfoliatum	Boneset	0.40	0.02	0.02
Helopsis helianthoides	Common Ox-Eye	5.00	0.30	0.30
Iris versicolor	Northern Blue Flag Iris	2.00	0.12	0.12
Lobelia siphilitica	Great Blue Lobelia	0.15	0.01	0.01
Mimulus ringens	Monkey Flower	1.00	0.06	0.06
Pycnanthemum virginianum	Mountain Mint	1.20	0.07	0.07
Solidago rigida	Stiff Goldenrod	0.80	0.05	0.05
Symphoricarpos novae-angliae	New England Aster	0.60	0.04	0.04
Thalictrum dioicum	Early Meadow Rue	0.20	0.01	0.01
Verbena hastata	Blue Vervain	2.60	0.16	0.16
Zizia aurea	Golden Alexanders	2.00	0.12	0.12
Cover Crop:	To be determined at time of seeding	15.00	15.00	15.00

- Legend**
- DENOTES FACILITY SITE CONTROL
 - x- DENOTES PROPOSED SECURITY FENCE
 - Prairie Mesic Mix - 23.98 AC
 - Array Mix - Sandy Soils - 20.2 AC
 - Array Mix - Heavy Soils - 18.85 AC
 - Wet Meadow - Array - 2.5 AC

- NOTES:**
- SEEDING TO BE COMPLETED USING A DRILL SEED METHOD WHERE FEASIBLE. WHERE DRILL SEEDING IS NOT FEASIBLE THE APPLICATION OF SEED VIA ALTERNATE METHODS INCLUDING BUT NOT LIMITED TO, BROADCAST OR HYDROSEEDING.
 - BROADCAST SEEDING SHALL BE COMPLETED IF AMBIENT SOIL TEMPERATURE IS CONSISTENTLY 60 DEGREES F OR LOWER IF NOT FROST SEEDING, DRILLING SHOULD OCCUR BETWEEN APRIL 1ST AND JUNE 1ST
 - THE CONTRACTOR SHALL NOT TILL OR FERTILIZE THE FIELDS, IF THE GROUND NEEDS TO BE TILLED, CONTRACTOR SHALL USE A VERTICAL PLOW



ISSUED FOR CONSTRUCTION

Westwood
 Phone: (952) 937-5150
 Fax: (952) 937-5822
 Toll Free: (888) 937-5150
 Westwood Professional Services, Inc.

Aurora Solar
 Aurora Distributed Solar, LLC
 One Tech Drive, Suite 220
 Andover, MA 01810

Westwood
 8523 Klever Ave NW
 Annandale, MN 55308

Print Name: August Dam Christensen
 Signature:
 Date: 03/30/2016
 License No: 47173

REVISION	DATE	DESCRIPTION	PREPARED	CHECKED	VALIDATED
X	X	X	X	X	X

Enel Green Power

Seeding Plan

Area / Area FT^2
 Unit / Unit FT

03/30/2016

8523 Klever Ave NW, Annandale, MN 55308

ANSI D SEE LEFT

C.400

confidential
Jeremy Duehr
Mar 01, 2016 1



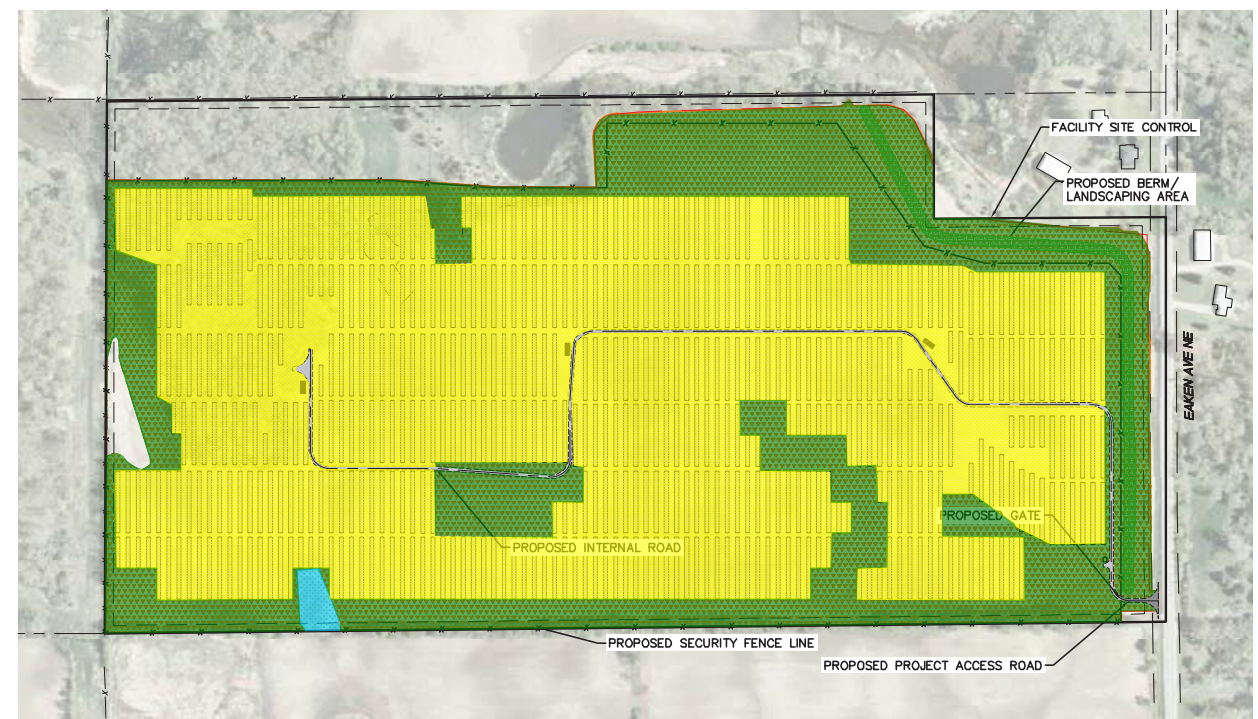
**Aurora Solar
Array Mix - Mesic Soils**

Date:	10/24/2016
Total Acres:	1.00
Grass lbs/ac:	9.00
Forb lbs/ac:	1.00
Cover Crop lbs/ac:	15.00
Total lbs/ac:	25.00



**Aurora Solar
Prairie Mix - Mesic Soils**

Date:	10/24/2016
Total Acres:	1.00
Grass lbs/ac:	7.50
Forb lbs/ac:	2.50
Cover Crop lbs/ac:	15.00
Total lbs/ac:	25.00



Grasses:	Scientific Name	Common Name	% of Mix	PLS lbs/ac	Total PLS lbs
	<i>Bouteloua curtipendula</i>	Side-Oats Grama	35.00	3.50	3.50
	<i>Bouteloua gracilis</i>	Blue Grama	10.00	1.00	1.00
	<i>Carex bicknellii</i>	Bicknell's Sedge	2.00	0.20	0.20
	<i>Carex brevior</i>	Plains Oval Sedge	1.00	0.10	0.10
	<i>Carex vulpinoidea</i>	Fox Sedge	1.00	0.10	0.10
	<i>Elymus villosus</i>	Silky Wild Rye	5.00	0.50	0.50
	<i>Elymus virginicus</i>	Virginia Wild Rye	10.00	1.00	1.00
	<i>Festuca subverticillata</i>	Nodding Fescue	1.00	0.10	0.10
	<i>Koeleria macrantha</i>	Junegrass	2.75	0.28	0.28
	<i>Schizachyrium scoparium</i>	Little Bluestem	14.50	1.45	1.45
	<i>Sporobolus cryptandrus</i>	Sand Dropseed	5.75	0.58	0.58
	<i>Sporobolus heterolepis</i>	Prairie Dropseed	2.00	0.20	0.20
	<i>Agastache foeniculum</i>	Fragrant Giant Hyssop	0.25	0.03	0.03
	<i>Allium canadense</i>	Wild Garlic	0.10	0.01	0.01
	<i>Allium setosum</i>	Prairie Onion	0.20	0.02	0.02
	<i>Anemone canadensis</i>	Canada Anemone	0.10	0.01	0.01
	<i>Aquilegia canadensis</i>	Columbine	0.20	0.02	0.02
	<i>Asclepias syriaca</i>	Common Milkweed	0.25	0.03	0.03
	<i>Asclepias tuberosa</i>	Butterfly Milkweed	0.30	0.03	0.03
	<i>Chamaecrista fasciculata</i>	Partridge Pea	1.50	0.15	0.15
	<i>Coreopsis palmata</i>	Prairie Coreopsis	0.10	0.01	0.01
	<i>Dalea candida</i>	White Prairie Clover	1.00	0.10	0.10
	<i>Dalea purpureum</i>	Purple Prairie Clover	2.80	0.28	0.28
	<i>Lupinus perennis</i>	Wild Lupine	0.10	0.01	0.01
	<i>Penstemon gracilis</i>	Slender Beardtongue	0.10	0.01	0.01
	<i>Potentilla arguta</i>	Prairie Cinquefoil	0.10	0.01	0.01
	<i>Pycnanthemum virginianum</i>	Mountain Mint	0.10	0.01	0.01
	<i>Ratibida columnifera</i>	Long-Headed Coneflower	0.95	0.10	0.10
	<i>Rudbeckia hirta</i>	Black Eyed Susan	0.50	0.05	0.05
	<i>Solidago nemoralis</i>	Old Field Goldenrod	0.10	0.01	0.01
	<i>Solidago speciosa</i>	Show Goldenrod	0.10	0.01	0.01
	<i>Symphoricarpos laevis</i>	Smooth Blue Aster	0.10	0.01	0.01
	<i>Verbena stricta</i>	Hoary Vervain	0.90	0.09	0.09
	<i>Zizia aurea</i>	Golden Alexanders	0.15	0.02	0.02
Cover Crop:	To be determined at time of seeding		15.00	15.00	

Species subject to change based on availability

Grasses:	Scientific Name	Common Name	% of Mix	PLS lbs/ac	Total PLS lbs
	<i>Andropogon gerardii</i>	Big Bluestem	2.00	0.20	0.20
	<i>Bouteloua curtipendula</i>	Side-Oats Grama	20.00	2.00	2.00
	<i>Bouteloua gracilis</i>	Blue Grama	10.00	1.00	1.00
	<i>Elymus canadensis</i>	Canada Wild Rye	5.00	0.50	0.50
	<i>Elymus virginicus</i>	Virginia Wild Rye	5.00	0.50	0.50
	<i>Koeleria macrantha</i>	Junegrass	2.00	0.20	0.20
	<i>Schizachyrium scoparium</i>	Little Bluestem	23.00	2.30	2.30
	<i>Sorghastrum nutans</i>	Indian Grass	6.00	0.60	0.60
	<i>Sporobolus heterolepis</i>	Prairie Dropseed	2.00	0.20	0.20
	<i>Agastache foeniculum</i>	Fragrant Giant Hyssop	0.10	0.01	0.01
	<i>Amorpha canescens</i>	Leadplant	1.50	0.15	0.15
	<i>Anemone canadensis</i>	Canada Anemone	0.75	0.08	0.08
	<i>Asclepias syriaca</i>	Common Milkweed	6.15	0.62	0.62
	<i>Asclepias tuberosa</i>	Butterfly Milkweed	1.00	0.10	0.10
	<i>Aster colerantigenus</i>	Sky-Blue Aster	0.50	0.05	0.05
	<i>Aster novae-angliae</i>	New England Aster	0.45	0.05	0.05
	<i>Chamaecrista fasciculata</i>	Partridge Pea	1.00	0.10	0.10
	<i>Coreopsis palmata</i>	Prairie Coreopsis	0.50	0.05	0.05
	<i>Dalea purpureum</i>	Purple Prairie Clover	4.00	0.40	0.40
	<i>Desmodium canadense</i>	Canada Tick Trefoil	1.00	0.10	0.10
	<i>Echinacea pallida</i>	Pale Purple Coneflower	0.75	0.08	0.08
	<i>Liatris pycnostachya</i>	Prairie Blazing Star	1.00	0.10	0.10
	<i>Monarda fistulosa</i>	Wild Bergamot	0.50	0.05	0.05
	<i>Potentilla arguta</i>	Prairie Cinquefoil	0.25	0.03	0.03
	<i>Pycnanthemum virginianum</i>	Mountain Mint	0.25	0.03	0.03
	<i>Ratibida pinnata</i>	Yellow Coneflower	1.00	0.10	0.10
	<i>Rudbeckia hirta</i>	Black Eyed Susan	1.25	0.13	0.13
	<i>Solidago rigida</i>	Stiff Goldenrod	1.80	0.18	0.18
	<i>Verbena stricta</i>	Hoary Vervain	0.75	0.08	0.08
	<i>Zizia aurea</i>	Golden Alexanders	0.50	0.05	0.05
Cover Crop:	To be determined at time of seeding		15.00	15.00	

Species subject to change based on availability



**Aurora Solar
Wet Meadow - Array**

Date:	10/24/2016
Total Acres:	1.00
Grass lbs/ac:	3.60
Sedge/Rush lbs/ac:	1.08
Forb lbs/ac:	1.32
Cover Crop lbs/ac:	15.00
Total lbs/ac:	21.00

Grasses:	Scientific Name	Common Name	% of Mix	PLS lbs/ac	Total PLS lbs
	<i>Bromus ciliatus</i>	Fringed Brome	20.00	1.20	1.20
	<i>Elymus virginicus</i>	Virginia Wild Rye	25.00	1.50	1.50
	<i>Lenaena oryzoides</i>	Rice Cut Grass	5.00	0.30	0.30
	<i>Poa palustris</i>	Fowl Bluegrass	10.00	0.60	0.60
	<i>Carex comosa</i>	Bottlebrush Sedge	7.00	0.42	0.42
	<i>Carex scoparia</i>	Broom Sedge	2.00	0.12	0.12
	<i>Carex stipata</i>	Common Fox Sedge	3.00	0.18	0.18
	<i>Carex vulpinoidea</i>	Fox Sedge	2.50	0.15	0.15
	<i>Juncus tenuis</i>	Path Rush	0.50	0.03	0.03
	<i>Scirpus atrovirens</i>	Green Bulrush	3.00	0.18	0.18
	<i>Asclepias incarnata</i>	Marsh Milkweed	4.80	0.29	0.29
	<i>Asclepias syriaca</i>	Common Milkweed	1.25	0.08	0.08
	<i>Eupatorium perfoliatum</i>	Boneset	0.40	0.02	0.02
	<i>Helopsis helianthoides</i>	Common Ox-Eye	5.00	0.30	0.30
	<i>Iris versicolor</i>	Northern Blue Flag Iris	2.00	0.12	0.12
	<i>Lobelia siphilitica</i>	Great Blue Lobelia	0.15	0.01	0.01
	<i>Mimulus ringens</i>	Monkey Flower	1.00	0.06	0.06
	<i>Pycnanthemum virginianum</i>	Mountain Mint	1.20	0.07	0.07
	<i>Solidago rigida</i>	Stiff Goldenrod	0.80	0.05	0.05
	<i>Symphoricarpos novae-angliae</i>	New England Aster	0.50	0.04	0.04
	<i>Thalictrum dioicum</i>	Early Meadow Rue	0.20	0.01	0.01
	<i>Verbena hastata</i>	Blue Vervain	2.60	0.16	0.16
	<i>Zizia aurea</i>	Golden Alexanders	2.00	0.12	0.12
Cover Crop:	To be determined at time of seeding		15.00	15.00	

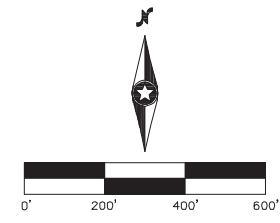
Species subject to change based on availability

Legend

- DENOTES FACILITY SITE CONTROL
- DENOTES PROPOSED SECURITY FENCE
- DENOTES PRAIRIE SEED MIX (19.3 AC)
- DENOTES NO MOW TURF WITH FORBS (48.04 AC)
- DENOTES WET MEADOW SOUTH & WEST NATIVE SEED MIX (0.28 AC)
- PROPOSED BERM/ LANDSCAPING AREA

NOTES:

1. SEEDING TO BE COMPLETED USING A DRILL SEED METHOD WHERE FEASIBLE. WHERE DRILL SEEDING IS NOT FEASIBLE THE APPLICATION OF SEED VIA ALTERNATE METHODS INCLUDING BUT NOT LIMITED TO, BROADCAST OR HYDROSEEDING.
2. BROADCAST SEEDING SHALL BE COMPLETED IF AMBIENT SOIL TEMPERATURE IS CONSISTENTLY 60 DEGREES F OR LOWER
3. IF NOT FROST SEEDING, DRILLING SHOULD OCCUR BETWEEN APRIL 1ST AND JUNE 1ST
4. THE CONTRACTOR SHALL NOT TILL OR FERTILIZE THE FIELDS, IF THE GROUND NEEDS TO TO BE TILLED, CONTRACTOR SHALL USE A VERTICAL PLOW



Issued For Construction

 biosar Americas, LLC 5962 La Pl. Ct #220 Carlsbad, CA 92008	 Aurora Distributed Solar, LLC One Tech Drive, Suite 220 Andover, MA 03900	I hereby certify that this plan was prepared by me or under my direct supervision and that I am a duly Licensed PROFESSIONAL ENGINEER under the laws of the State of Minnesota. Print Name: August Dean Christensen Date: 02/26/2016 License No. 47173
 Westwood Professional Services, Inc. Phone (952) 937-5150 7899 Anagram Drive Fax (952) 937-5822 Eden Prairie, MN 55344 Toll Free (888) 937-5150 westwoodps.com		

REVISION	DATE	DESCRIPTION	PREPARED	CONTROLLED	VALIDATED

REVISION PREPARED DATE: 02/26/2016	APPROVED DATE:	PROJECT NUMBER CLASSIFICATION REVISION NUMBER	SHEET NUMBER TOTAL SHEETS
---------------------------------------	-------------------	---	------------------------------

 	Seeding Plan CODES Area / Area FT^2 Unit / Unit FT	<table border="1"> <tr> <th>NO</th> <th>NO</th> <th>NO</th> <th>NO</th> <th>NO</th> <th>NO</th> <th>NO</th> <th>NO</th> <th>NO</th> <th>NO</th> <th>NO</th> <th>NO</th> <th>NO</th> <th>NO</th> <th>NO</th> <th>NO</th> <th>NO</th> <th>NO</th> <th>NO</th> <th>NO</th> </tr> <tr> <td>D</td> <td>A</td> <td>C</td> <td>U</td> <td>S</td> <td>X</td> <td>M</td> <td>N</td> <td>T</td> <td>R</td> <td>S</td> <td>X</td> <td>X</td> <td>X</td> <td>X</td> <td>X</td> <td>X</td> <td>X</td> <td>X</td> <td>0</td> </tr> </table>	NO	NO	NO	NO	NO	NO	NO	NO	NO	NO	NO	NO	NO	NO	NO	NO	NO	NO	NO	NO	D	A	C	U	S	X	M	N	T	R	S	X	X	X	X	X	X	X	X	0
NO	NO	NO	NO	NO	NO	NO	NO	NO	NO	NO	NO	NO	NO	NO	NO	NO	NO	NO	NO																							
D	A	C	U	S	X	M	N	T	R	S	X	X	X	X	X	X	X	X	0																							