

- Proposed Routes**
- Blue Route
  - Alternatives**
  - Route Variation
  - Anticipated Route Width
  - Anticipated Right-of-Way
  - ⊙ County Well Index
  - ⊙ Mineral Exploration or Engineering Drillhole
  - ⊙ NHD Watercourse
  - ⊙ NHD Waterbody
  - ⊙ PWT Waterbody
  - ⊙ Scientific and Natural Area (SNA)
  - ⊙ Preliminary Peatland SNA Watershed Protection Area
  - ⊙ Indian Reservation Land
  - ⊙ Snowmobile Trail
  - ⊙ Public Land Survey Section
  - Existing Transmission Lines**
  - 69 or 115 KV
  - 230 KV



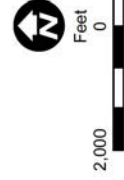
Appendix S - Map 41

**MAP BOOK - CENTRAL SECTION**  
Great Northern Transmission Line  
Final Environmental Impact Statement





- Proposed Routes**
- Blue Route
  - Segment Option
  - C2 Segment Option
- Alternatives**
- Route Variation
  - Anticipated Route Width
  - Anticipated Right-of-Way
  - Residences
  - Commercial or Non-Residential Structure
  - NHD Watercourse
  - PWT Watercourse
  - Scientific and Natural Area (SNA)
  - Preliminary Peatland SNA Watershed
  - Protection Area
  - Snowmobile Trail
  - Public Land Survey Section
- Existing Transmission Lines**
- 69 or 115 KV
  - 230 KV



Appendix S - Map 42

**MAP BOOK - CENTRAL SECTION**  
Great Northern Transmission Line  
Final Environmental Impact Statement



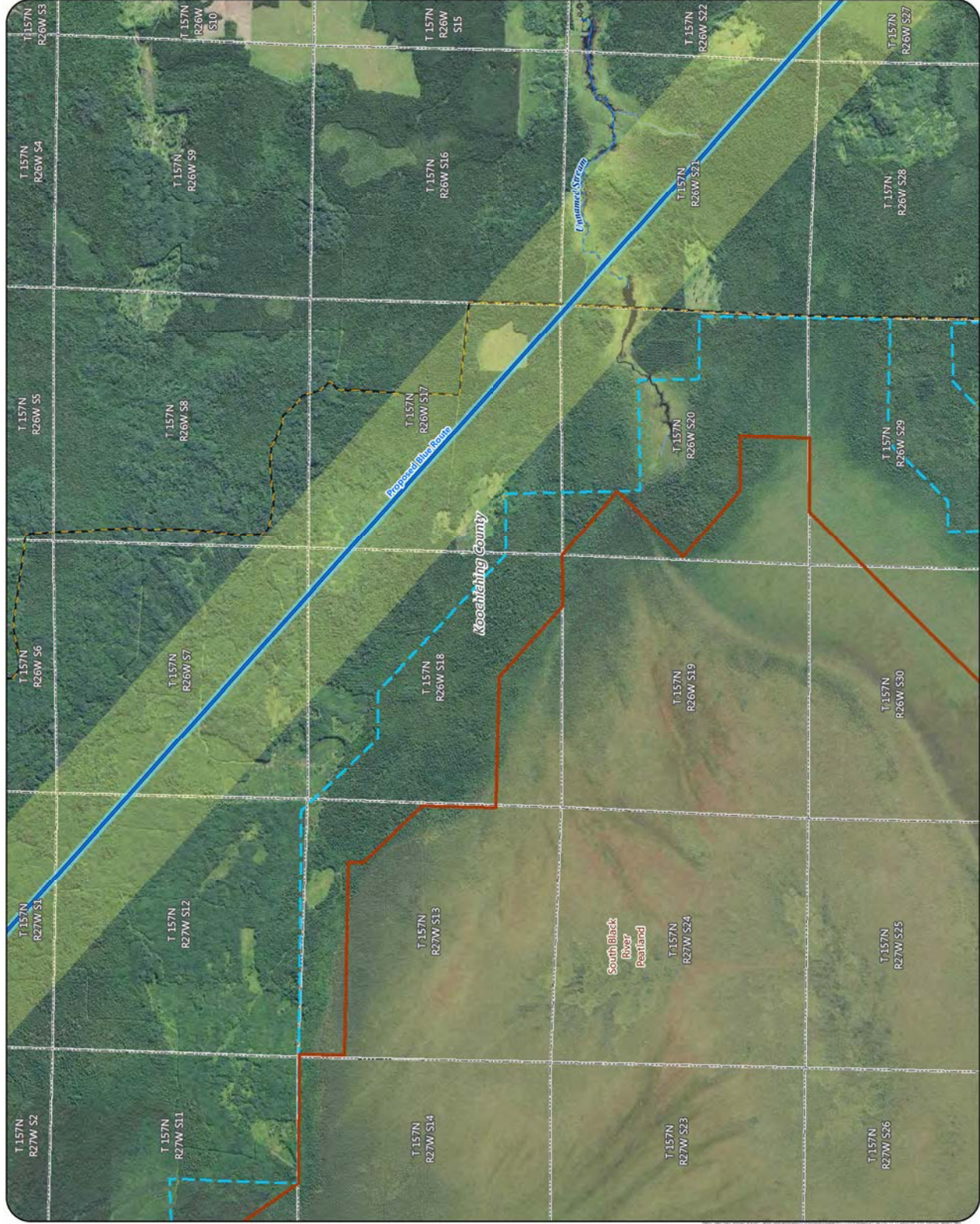


- Proposed Routes**
- Blue Route
  - Anticipated Route Width
  - Anticipated Right-of-Way
  - NHD Watercourse
  - PMW Watercourse
  - Scientific and Natural Area (SNA)
  - Preliminary Peatland SNA Watershed Protection Area
  - Snowmobile Trail
  - Public Land Survey Section



Appendix S - Map 43

**MAP BOOK - CENTRAL SECTION**  
Great Northern Transmission Line  
Final Environmental Impact Statement





- Proposed Routes**
- Blue Route
  - Anticipated Route Width
  - NHD Watercourse
  - PWT Watercourse
  - Public Land Survey Section



Appendix S - Map 44

**MAP BOOK - CENTRAL SECTION**  
Great Northern Transmission Line  
Final Environmental Impact Statement





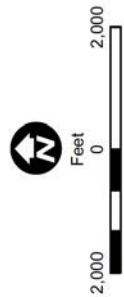
Appendix S - Map 45

**MAP BOOK - CENTRAL SECTION**  
Great Northern Transmission Line  
Final Environmental Impact Statement





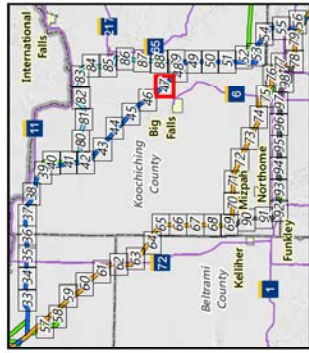
- Proposed Regeneration Site
- Blue Route
- Anticipated Route Width
- Anticipated Right-of-Way
- Residences
- Commercial or Non-Residential Structure
- County Well Index
- Mineral Exploration or Engineering Drillhole
- Carry-in Water Access
- State Water Trail
- NHD Watercourse
- PMT Watercourse
- MPCA Impaired Stream
- Ecologically Important Lowland Conifers
- Snowmobile Trail
- State Trail
- Civil Township
- Public Land Survey Section
- MPCA Database
- Tanks and Leaks
- Existing Transmission Lines
- 69 or 115 KV



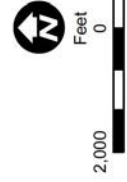
Appendix S - Map 46



**MAP BOOK - CENTRAL SECTION**  
Great Northern Transmission Line  
Final Environmental Impact Statement



- Proposed Regeneration Site
- Blue Route
- Anticipated Route Width
- Anticipated Right-of-Way
- Airport
- NHD Watercourse
- PWI Watercourse
- Ecologically Important Lowland Conifers
- Snowmobile Trail
- State Trail
- Public Land Survey Section
- MPCA Database
- Hazardous Waste
- Existing Transmission Lines
- 69 or 115 KV



Appendix S - Map 47

**MAP BOOK - CENTRAL SECTION**  
Great Northern Transmission Line  
Final Environmental Impact Statement



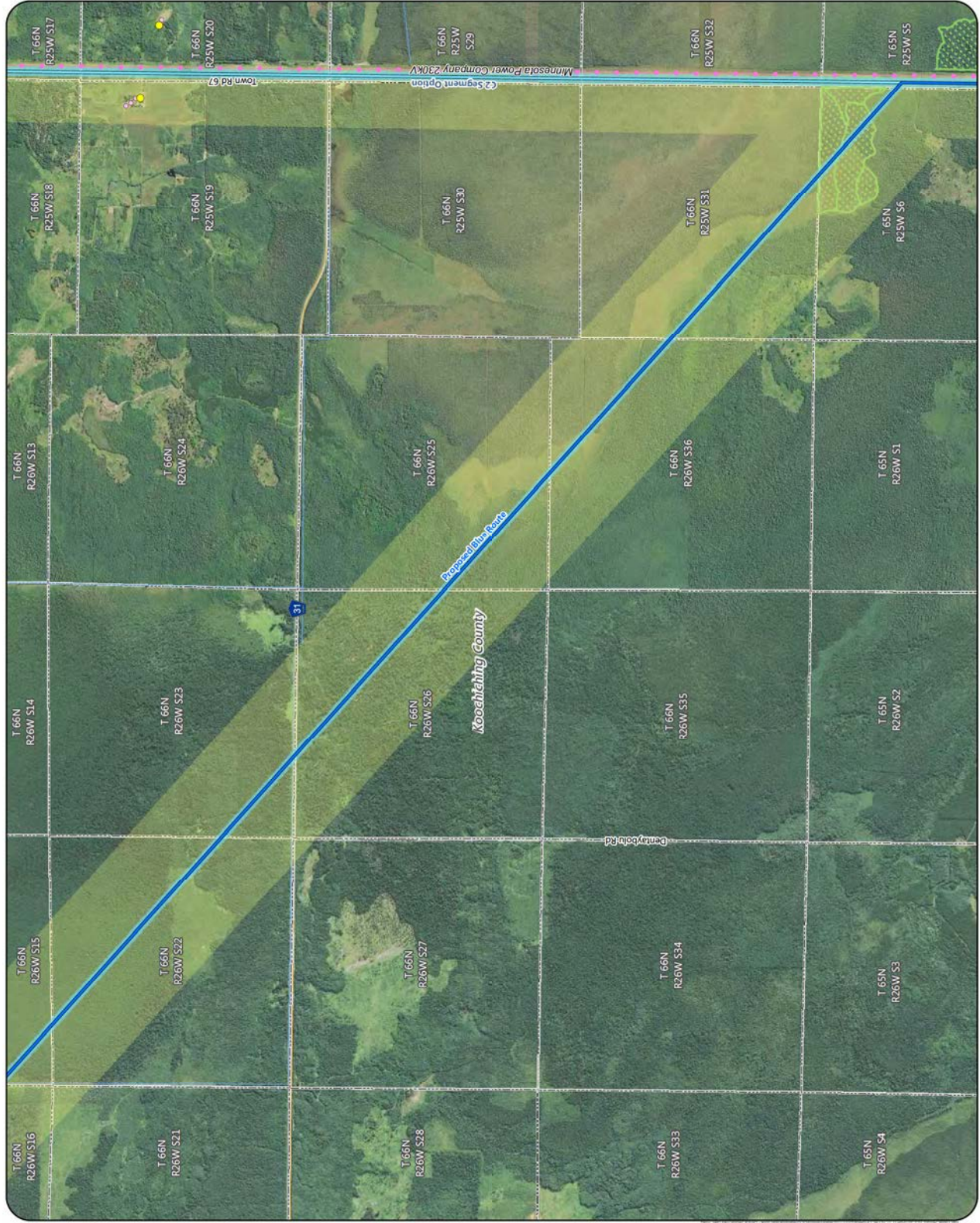


- Proposed Routes**
- Blue Route
- Segment Options**
- C2 Segment Option
- Anticipated Route Width**
- Anticipated Right-of-Way
- Residences**
- Commercial or Non-Residential Structure
  - NHD Watercourse
  - Ecologically Important Lowland Conifers
- Public Land Survey Section**
- Existing Transmission Lines
  - 230 kV



Appendix S - Map 48

**MAP BOOK - CENTRAL SECTION**  
Great Northern Transmission Line  
Final Environmental Impact Statement







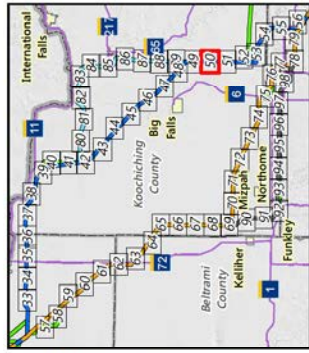
- Proposed Routes**
- Blue Route
  - Segment Options**
  - C2 Segment Option
  - Anticipated Route Width
  - Anticipated Right-of-Way
  - NHD Watercourse
  - Scientific and Natural Area (SNA)
  - Preliminary Peatland SNA Watershed Protection Area
  - Ecologically Important Lowland Complexes
  - Public Land Survey Section
  - Existing Transmission Lines
  - 230 kV



Appendix S - Map 49

**MAP BOOK - CENTRAL SECTION**  
Great Northern Transmission Line  
Final Environmental Impact Statement



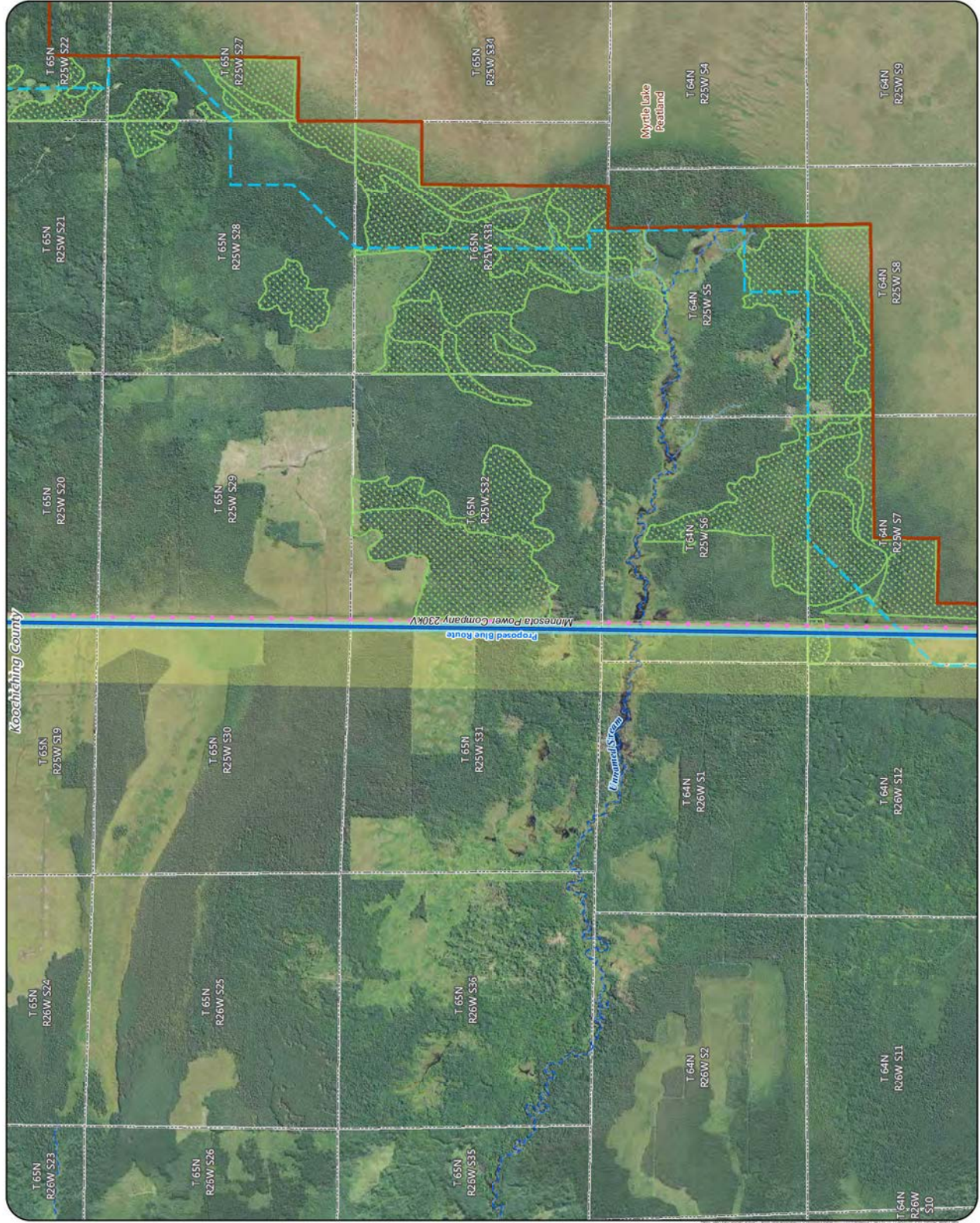


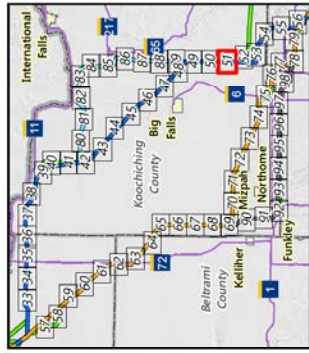
- Proposed Routes**
- Blue Route
  - Anticipated Route Width
  - Anticipated Right-of-Way
  - NHD Watercourse
  - PWT Watercourse
  - Scientific and Natural Area (SNA)
  - Preliminary Peatland SNA Watershed Protection Area
  - Ecologically Important Lowland Conifers
  - Public Land Survey Section
  - Battling Transmission Lines
  - 230 KV



Appendix S - Map 50

**MAP BOOK - CENTRAL SECTION**  
Great Northern Transmission Line  
Final Environmental Impact Statement





- Proposed Routes**
- Blue Route
  - Anticipated Route Width
  - Anticipated Right-of-Way
  - NHD Watercourse
  - Scientific and Natural Area (SNA)
  - Preliminary Peatland SNA Watershed Protection Area
  - Ecologically Important Lowland Conflicts
  - Public Land Survey Section
- Existing Transmission Lines**
- 230 KV
  - 500 KV



Appendix S - Map 51

**MAP BOOK - CENTRAL SECTION**  
Great Northern Transmission Line  
Final Environmental Impact Statement





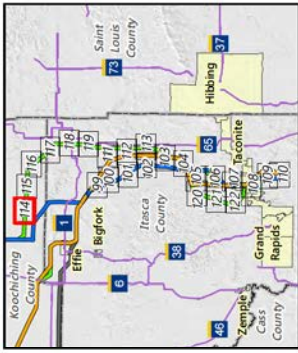
- Proposed Routes**
- Blue Route
- Alternatives**
- Route Variation
  - Anticipated Route Width
  - Anticipated Right-of-Way
- Residences**
- Commercial or Non-Residential Structure
  - County Well Index
  - Mineral Exploration or Engineering Drillhole
  - NHD Watercourse
  - PWI Watercourse
  - Ecologically Important Lowland Conifers
  - Public Land Survey Section
- Existing Transmission Lines**
- 230 KV
  - 500 KV



Appendix S - Map 52

**MAP BOOK - CENTRAL SECTION**  
Great Northern Transmission Line  
Final Environmental Impact Statement



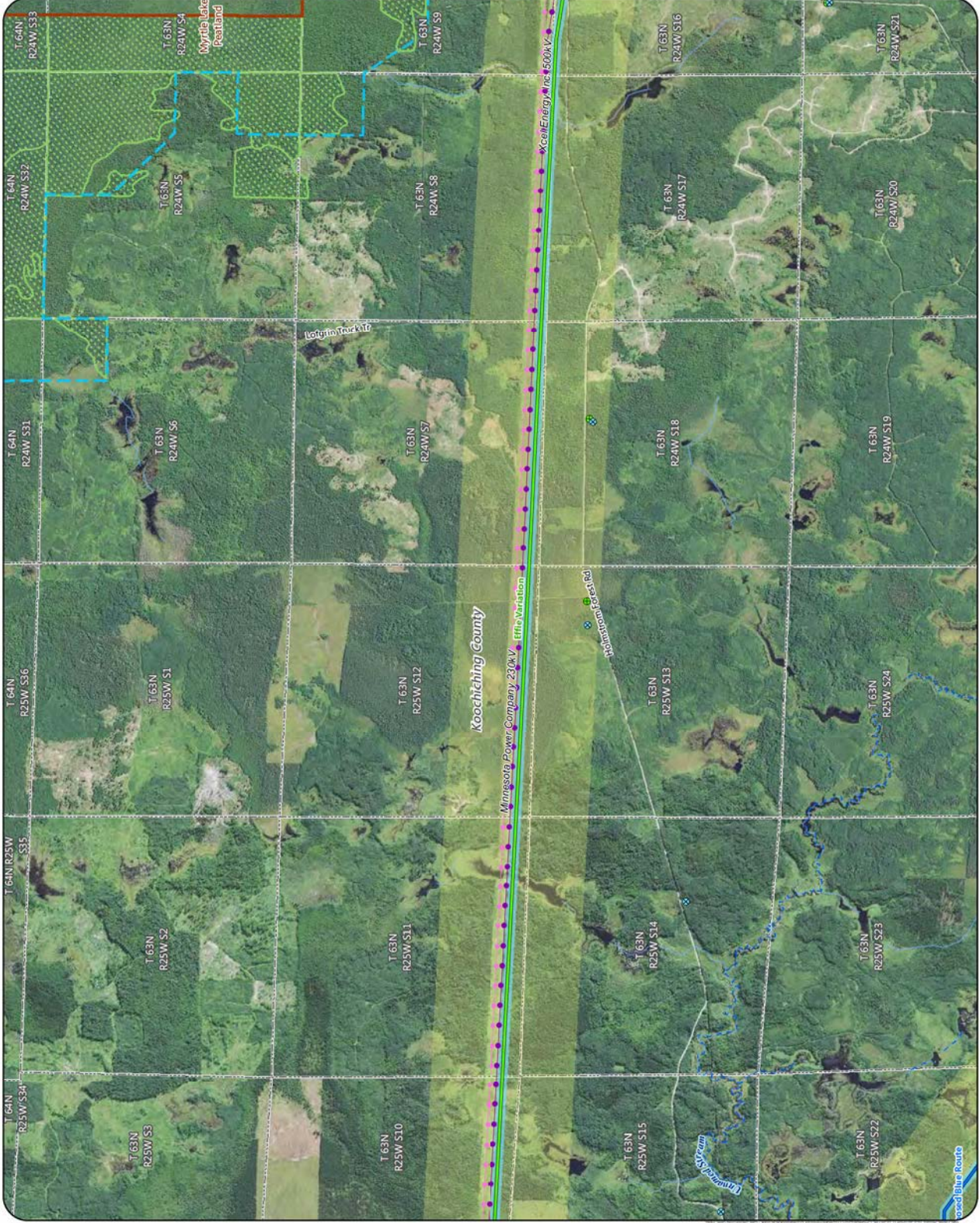


- Proposed Routes**
- Blue Route
  - Alternatives**
  - Route Variation
  - Anticipated Route Width
  - Anticipated Right-of-Way
  - County Well Index
  - Mineral Exploration or Engineering Drillhole
  - NHD Watercourse
  - PMI Watercourse
  - Scientific and Natural Area (SNA)
  - Preliminary Peatland SMA Watershed Protection Area
  - Ecologically Important Lowland Conifers
  - Public Land Survey Section
  - Existing Transmission Lines
  - 230 kV
  - 500 kV



Appendix S - Map 114

**MAP BOOK - EAST SECTION**  
Great Northern Transmission Line  
Final Environmental Impact Statement



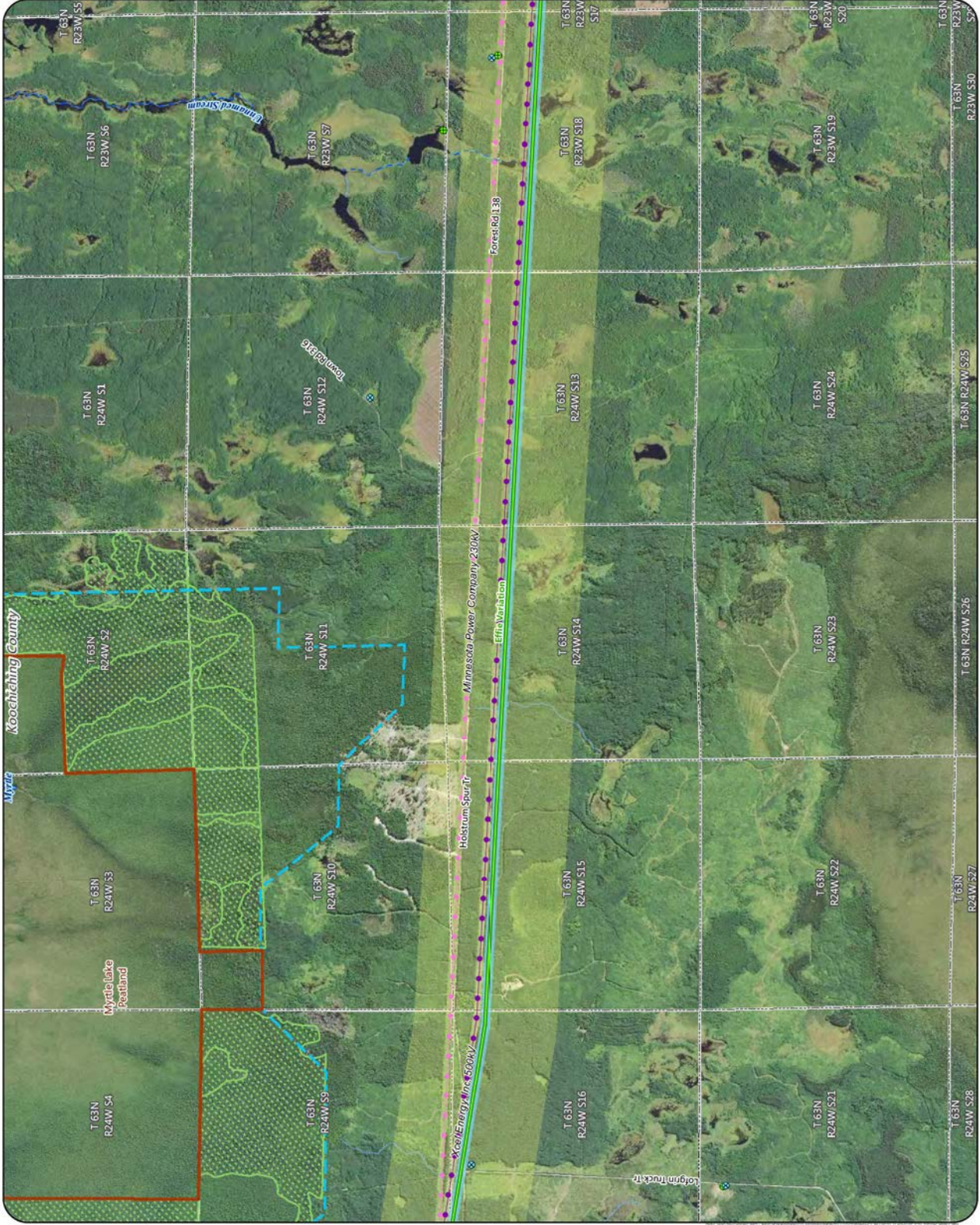


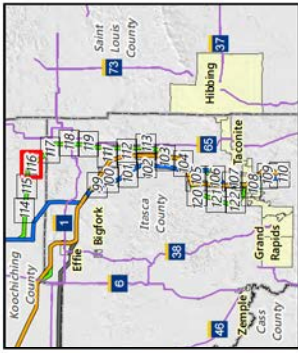
- Alternatives**
- Route Variation
  - Anticipated Route Width
  - Anticipated Right-of-Way
  - County Well Index
  - Mineral Exploration or Engineering Drillhole
  - NHD Watercourse
  - PMI Watercourse
  - NHD Waterbody
  - PMI Waterbody
  - Scientific and Natural Area (SNA)
  - Preliminary Peatland SNA Watershed Protection Area
  - Ecologically Important Lowland Conifers
  - Public Land Survey Section
  - Existing Transmission Lines
    - 230 kV
    - 500 kV



Appendix S - Map 115

**MAP BOOK - EAST SECTION**  
Great Northern Transmission Line  
Final Environmental Impact Statement





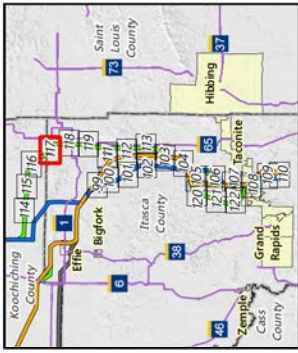
- Alternatives**
- Route Variation
  - Anticipated Route Width
  - Anticipated Right-of-Way
  - Residences
  - Commercial or Non-Residential Structure
  - County Well Index
  - Mineral Exploration or Engineering Drillhole
  - NHD Watercourse
  - Trout Stream
  - NHD Waterbody
  - PWI Waterbody
  - Public Land Survey Section
  - Existing Transmission Lines
  - 230 kv
  - 500 kv



Appendix S - Map 116

**MAP BOOK - EAST SECTION**  
Great Northern Transmission Line  
Final Environmental Impact Statement



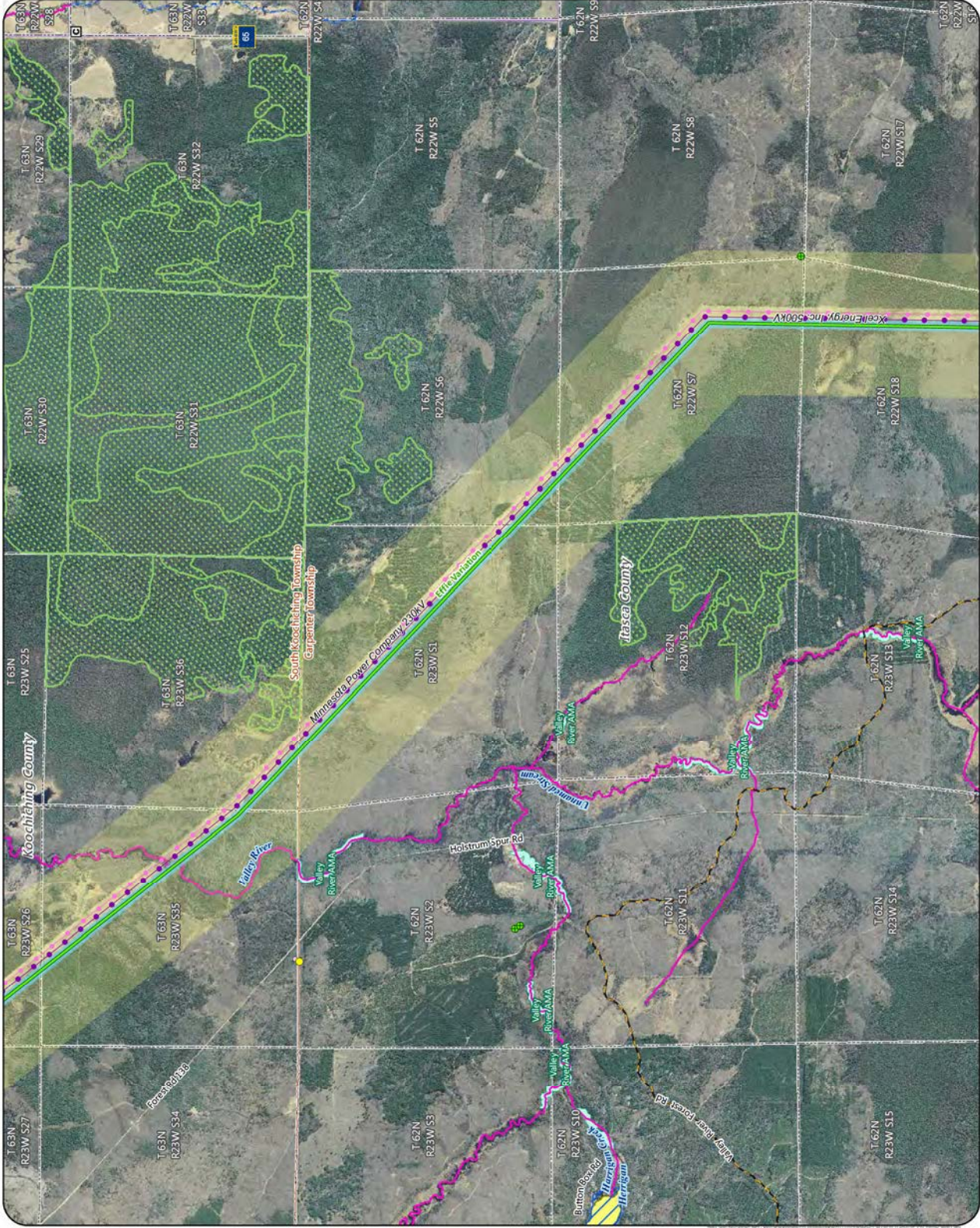


- Alternatives**
- Route Variation
  - Anticipated Route Width
  - Anticipated Right-of-Way
  - Residences
  - Commercial or Non-Residential Structure
  - Church
  - Mineral Exploration or Engineering Drillhole
  - NHD Watercourse
  - PMI Watercourse
  - Trout Stream
  - NHD Waterbody
  - PMI Waterbody
  - Wild Rice Lake
  - Aquatic Management Area
  - Ecologically Important Lowland Conifers
  - Snowmobile Trail
  - Civil Township
  - Public Land Survey Section
  - Existing Transmission Lines
  - 230 KV
  - 500 KV

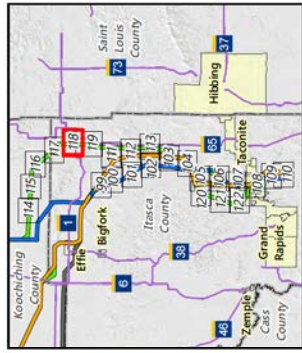


Appendix S - Map 117

**MAP BOOK - EAST SECTION**  
Great Northern Transmission Line  
Final Environmental Impact Statement







**Alternatives**

- Route Variation
- Anticipated Route Width
- Anticipated Right-of-Way
- Residences
- Commercial or Non-Residential Structure
- School
- Aggregate Source Location
- County Well Index
- Mineral Exploration or Engineering Drillhole
- State Forest Campground
- NHD Watercourse
- PWI Watercourse
- Trout Stream
- PWI Waterbody
- Aquatic Management Area
- State Game Refuge
- Ecologically Important Lowland Conifers
- Snowmobile Trail
- Civil Township
- Public Land Survey Section
- MPCA Database
- Tanks and Leaks
- Existing Transmission Lines
- 230 kV
- 500 kV

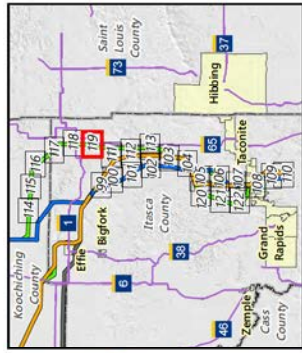


2,000  
0  
2,000  
Feet

Appendix S - Map 118

**MAP BOOK - EAST SECTION**  
Great Northern Transmission Line  
Final Environmental Impact Statement





**Alternatives**

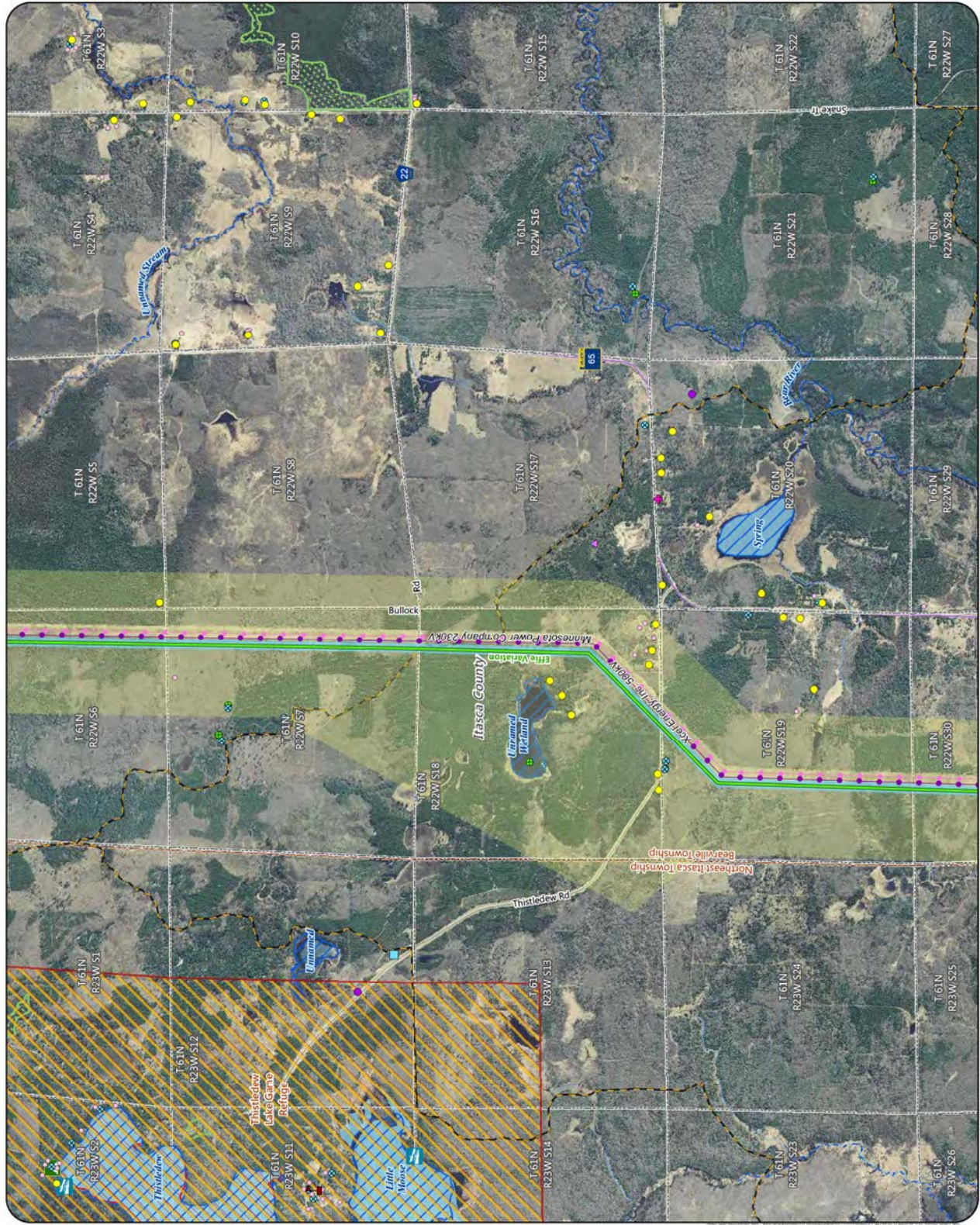
- Route Variation
- Anticipated Route Width
- Anticipated Right-of-Way
- Residences
- Commercial or Non-Residential Structure
- Cemetery
- School
- Aggregate Source Location
- County Well Index
- Mineral Exploration or Engineering Drillhole
- State Forest Campground
- Trailer Launch Water Access
- NHD Watercourse
- PMT Watercourse
- NHD Waterbody
- PMT Waterbody
- MPCA Impaired Waterbody
- State Game Refuge
- Ecologically Important Lowland Conifers
- Snowmobile Trail
- Civil Township
- Public Land Survey Section
- MPCA Database
- Hazardous Waste
- Multiple Activities

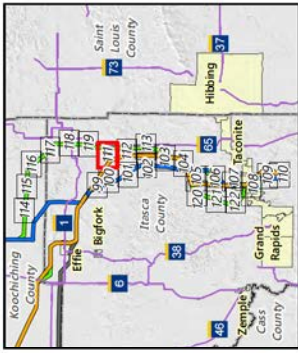


2,000  
0  
2,000  
Feet

Appendix S - Map 119

**MAP BOOK - EAST SECTION**  
Great Northern Transmission Line  
Final Environmental Impact Statement

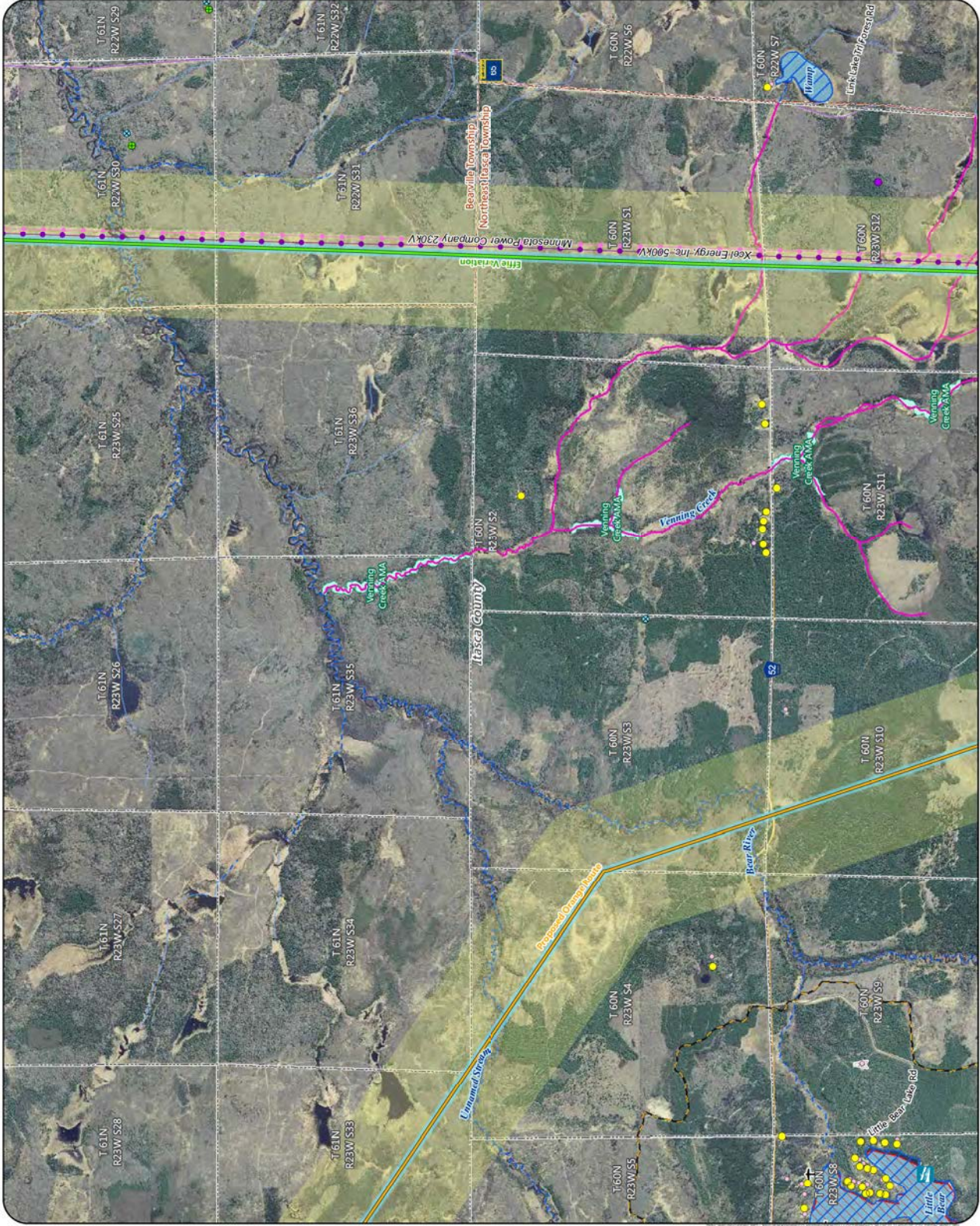


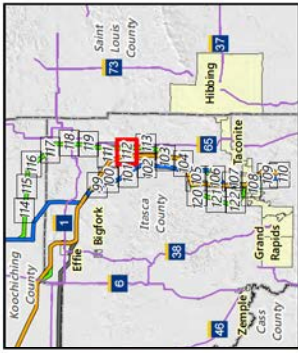


- Proposed Routes**
- Change Route
  - Alternatives
  - Route Variation
  - Anticipated Route Width
  - Anticipated Right-of-Way
  - Residences
  - Commercial or Non-Residential Structure
  - Airstrip
  - Communication Tower
  - County Well Index
  - Mineral Exploration or Engineering Drillhole
  - Trailer Launch Water Access
  - NHD Watercourse
  - PMI Watercourse
  - Trout Stream
  - NHD Waterbody
  - PMI Waterbody
  - MPCA Impaired Waterbody
  - Aquatic Management Area
  - Snowmobile Trail
  - Civil Township
  - Public Land Survey Section
  - MPCA Database
  - Tanks and Leaks
  - Multiple Activities
  - Existing Transmission Lines
  - 230 KV
  - 500 KV



Appendix S - Map 111  
**MAP BOOK - EAST SECTION**  
 Great Northern Transmission Line  
 Final Environmental Impact Statement



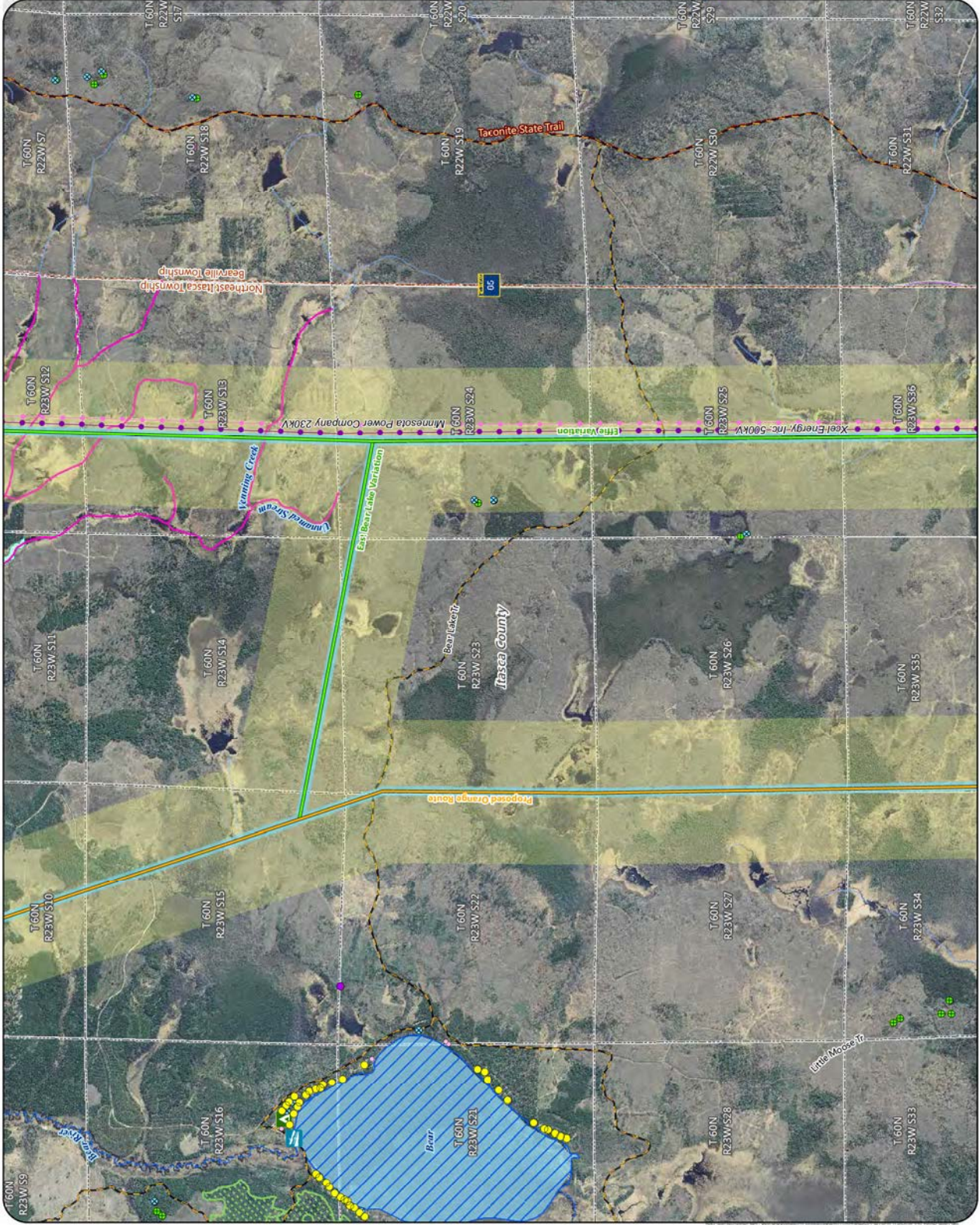


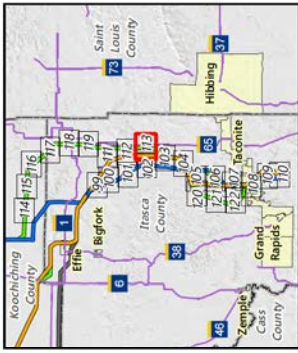
- Proposed Routes**
- Change Route
  - Alternatives
  - Route Variation
  - Anticipated Route Width
  - Anticipated Right-of-Way
  - Residences
  - Commercial or Non-Residential Structure
  - Aggregate Source Location
  - County Well Index
  - Mineral Exploration or Engineering Drillhole
  - State Forest Campground
  - Trailer Launch Water Access
  - NHD Watercourse
  - PMT Watercourse
  - Trout Stream
  - NHD Waterbody
  - PMT Waterbody
  - Aquatic Management Area
  - Ecologically Important Lowland Conifers
  - Snowmobile Trail
  - State Trail
  - Civil Township
  - Public Land Survey Section
  - MPCA Database
  - Multiple Activities
  - Existing Transmission Lines
  - 230 KV
  - 500 KV



Appendix S - Map 112

**MAP BOOK - EAST SECTION**  
Great Northern Transmission Line  
Final Environmental Impact Statement



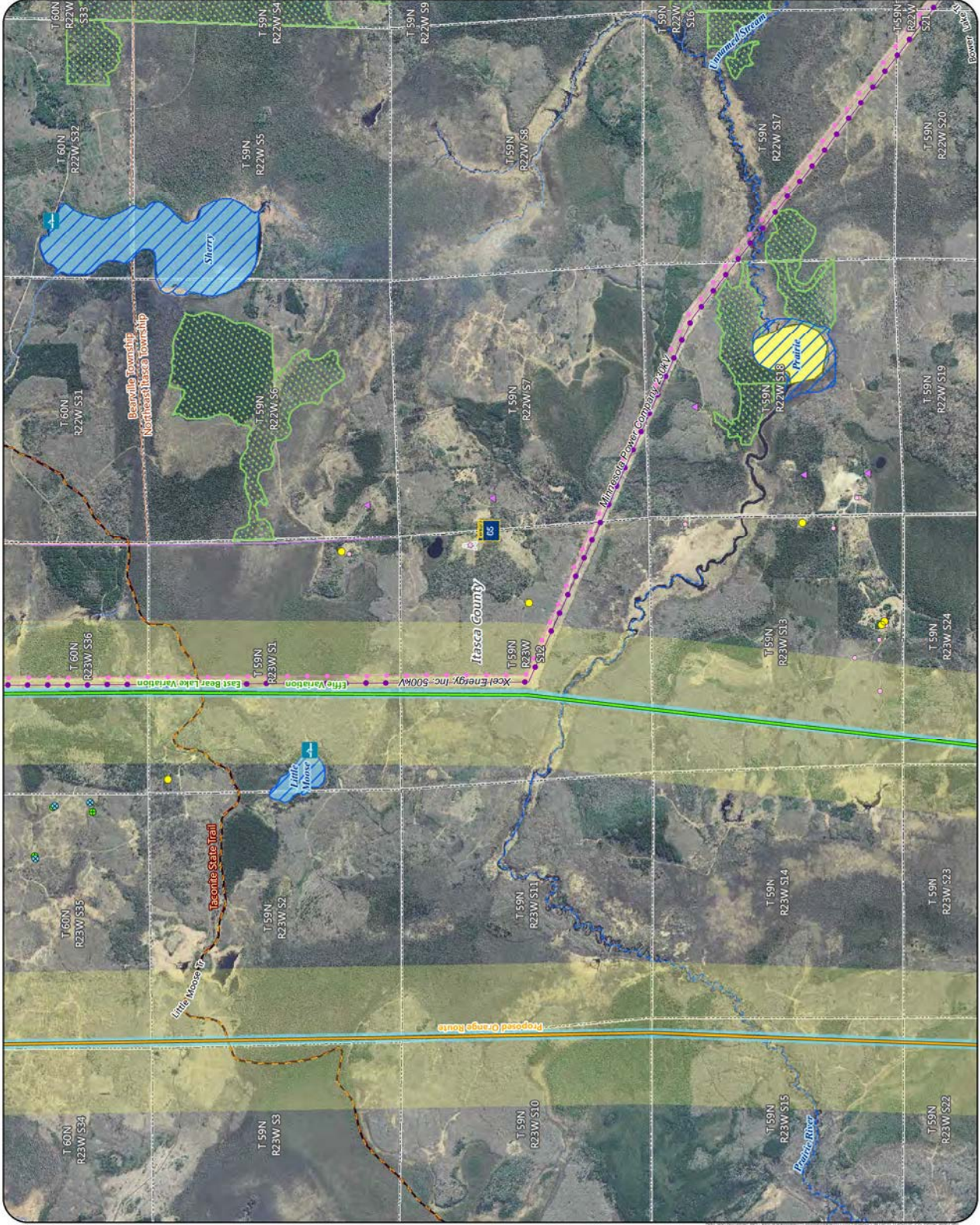


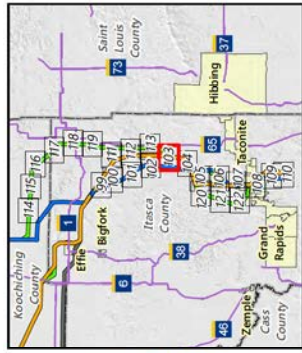
- Proposed Routes**
- Orange Route
  - Alternatives
  - Route Variation
  - Anticipated Route Width
  - Anticipated Right-of-Way
  - Residences
  - Commercial or Non-Residential Structure
  - Aggregate Source Location
  - Communication Tower
  - County Well Index
  - Mineral Exploration or Engineering Drillhole
  - Carry-in Water Access
  - NHD Watercourse
  - PMI Watercourse
  - NHD Waterbody
  - PMI Waterbody
  - Wild Rice Lake
  - Ecologically Important Lowland Conifers
  - Snowmobile Trail
  - State Trail
  - Civil Township
  - Public Land Survey Section
- Existing Transmission Lines**
- 230 kV
  - 500 kV



Appendix S - Map 113

**MAP BOOK - EAST SECTION**  
Great Northern Transmission Line  
Final Environmental Impact Statement



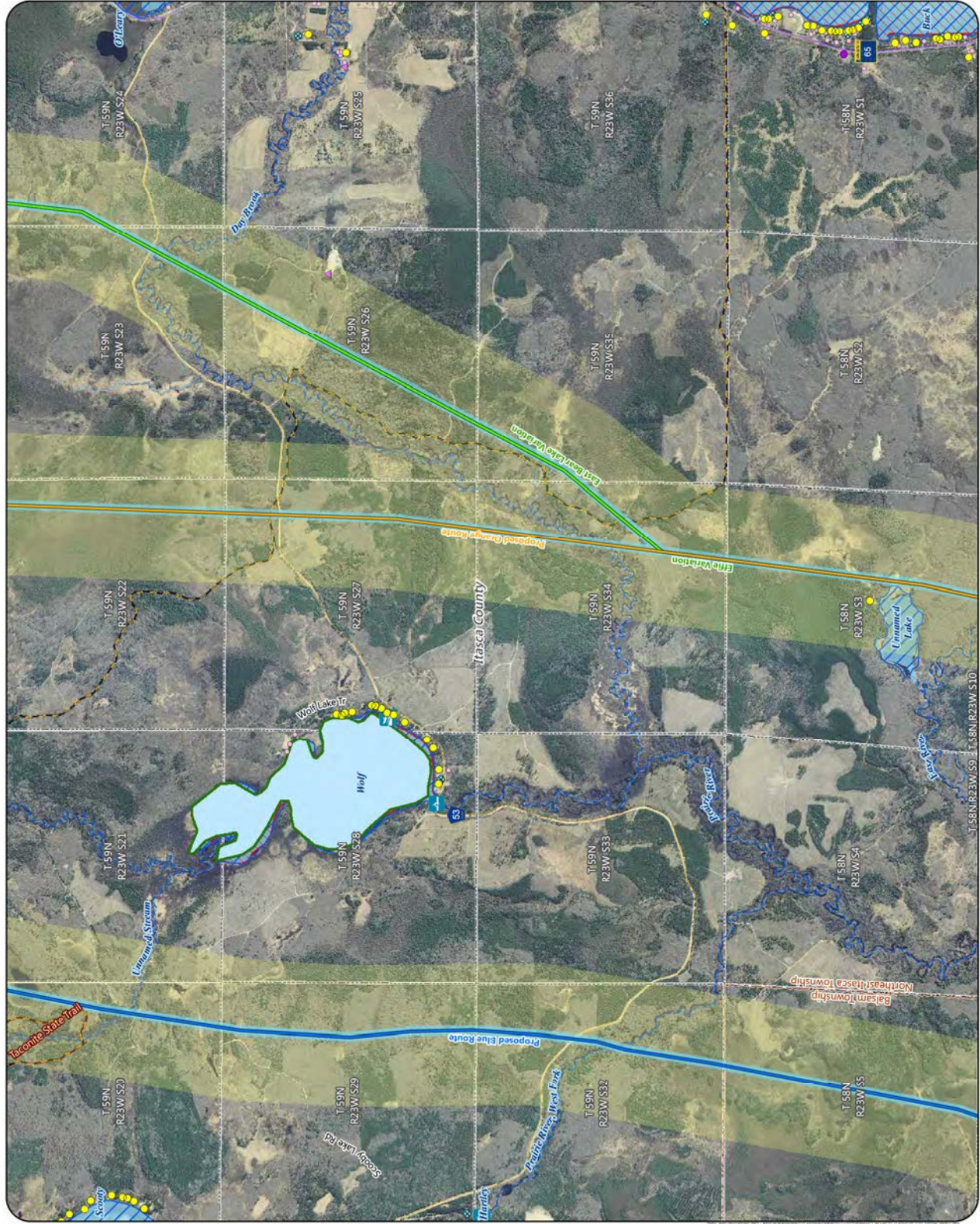


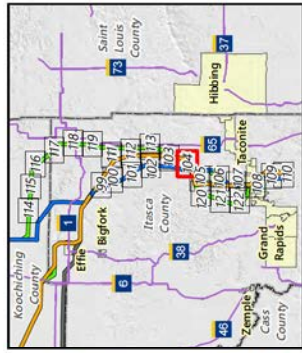
- Proposed Routes**
- Blue Route
  - Orange Route
- Alternatives**
- Route Variation
  - Anticipated Route Width
  - Anticipated Right-of-Way
- Residences**
- Commercial or Non-Residential Structure
  - Aggregate Source Location
  - County Well Index
  - Carry-in Water Access
  - Trailer Launch Water Access
  - NHD Watercourse
  - PMT Watercourse
  - NHD Waterbody
  - PMT Waterbody
  - MPCA Impaired Waterbody
  - Shallow Lake
  - Snowmobile Trail
  - State Trail
  - Civil Township
  - Public Land Survey Section
  - MPCA Database
  - Multiple Activities



Appendix S - Map 103

**MAP BOOK - EAST SECTION**  
Great Northern Transmission Line  
Final Environmental Impact Statement





- Proposed Routes**
- Blue Route
  - Orange Route
- Alternatives**
- Route Variation
  - Alignment Modification
  - Anticipated Route Width
  - Anticipated Right-of-Way
- Residences**
- Commercial or Non-Residential Structure
  - Aggregate Source Location
  - County Well Index
  - NHD Watercourse
  - PMI Watercourse
  - NHD Waterbody
  - PMI Waterbody
  - Wild Rice Lake
  - Shallow Lake
  - Snowmobile Trail
  - State Trail
  - Civil Township
- MPCA Database**
- Public Land Survey Section
  - Hazardous Waste



Appendix S - Map 104

**MAP BOOK - EAST SECTION**  
Great Northern Transmission Line  
Final Environmental Impact Statement

