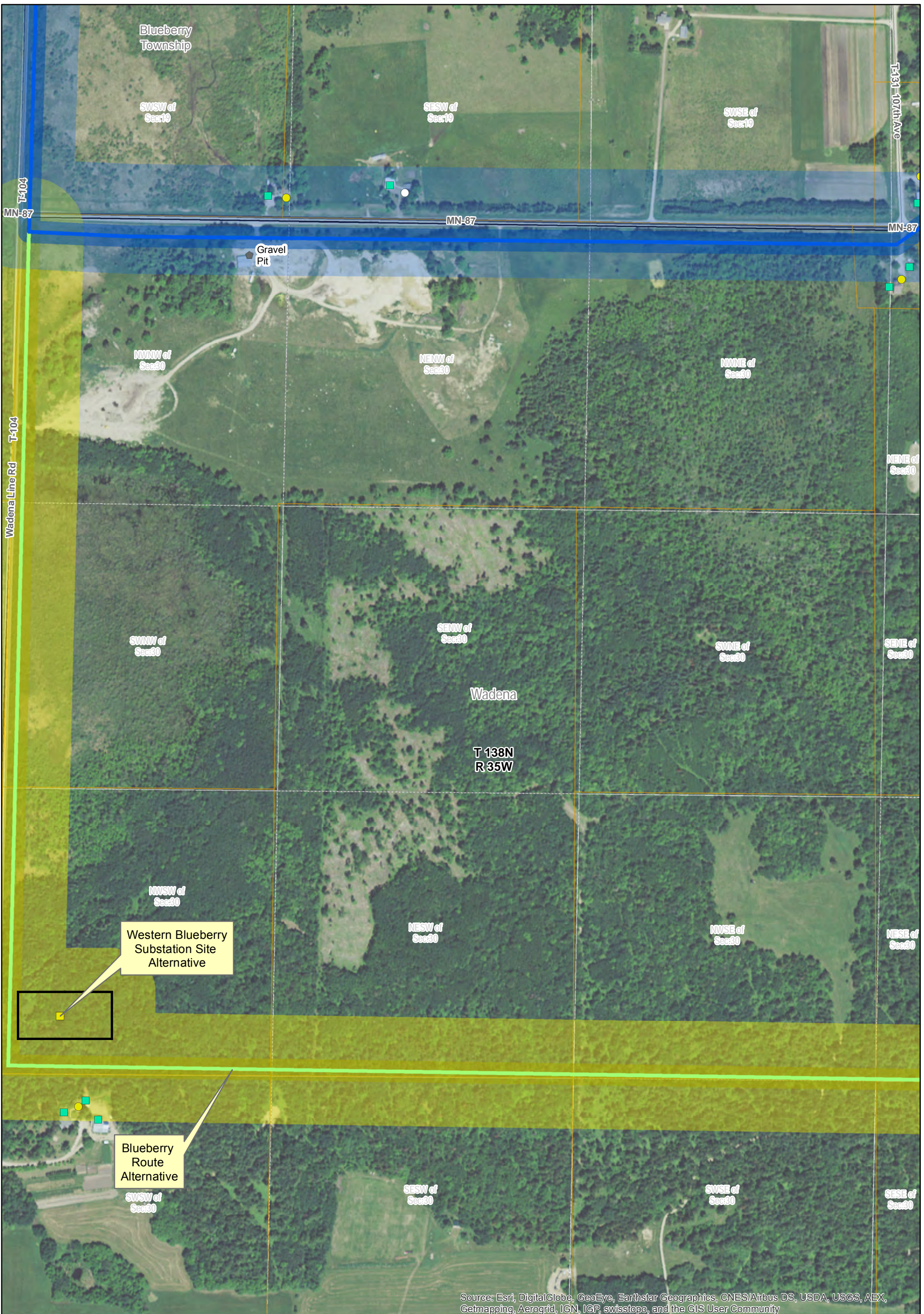




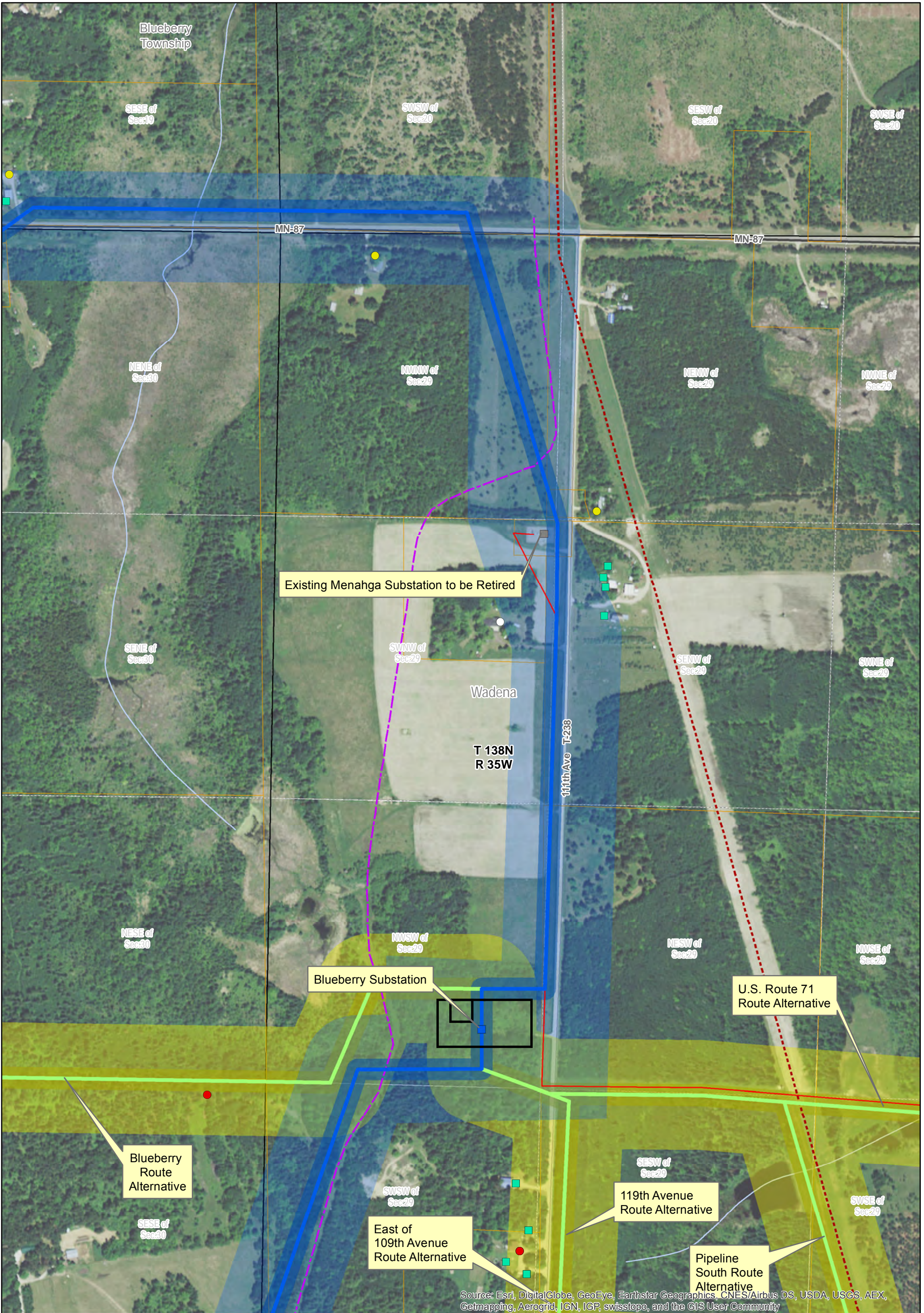
Source: Esri, DigitalGlobe, GeoEye, Earthstar Geographics, CNES/Airbus DS, USDA, USGS, AEX, Getmapping, Aerogrid, IGN, IGP, swisstopo, and the GIS User Community

<p><b>Applicant</b></p> <ul style="list-style-type: none"> <li>Proposed Alignment</li> <li>Proposed Route (500' width)</li> <li>Proposed Easement Area (100' width)</li> <li>Proposed Substation</li> </ul> <p><b>Alternatives</b></p> <ul style="list-style-type: none"> <li>Alternative Alignment – Single Circuit 115 kV</li> <li>Alternative Easement Area (100' width)</li> <li>Alternative Substation</li> </ul>	<p><b>Existing</b></p> <ul style="list-style-type: none"> <li>34.5 kV Transmission Line</li> <li>115 kV Transmission Line</li> <li>230 kV Transmission Line</li> <li>250 kV Transmission Line</li> <li>Oil pipeline</li> <li>Gas pipeline</li> <li>Substation</li> <li>Substation Fence</li> </ul>	<p><b>Residence</b></p> <ul style="list-style-type: none"> <li>Residence 50-100'</li> <li>Residence 100-150'</li> <li>Residence 150-200'</li> <li>Residence 200-250'</li> </ul> <p><b>Non-Residential Building</b></p> <ul style="list-style-type: none"> <li>Non-Residential Building 0-250'</li> <li>Cemeteries</li> <li>GravelPits</li> </ul>		<p>Map Sheet 15 of 30</p> <p>Route Maps</p> <p>Menahga Area 115 kV Project</p> <p>Data Sources Vary Between MNDOT, MNDNR, MNGEO and Great River Energy Aerial Image from ESRI Web service Map Projection: UTM NAD 83 Zone 15</p> <p>0 225 Feet Updated: 7/29/2015</p>
--	--	--	--	---



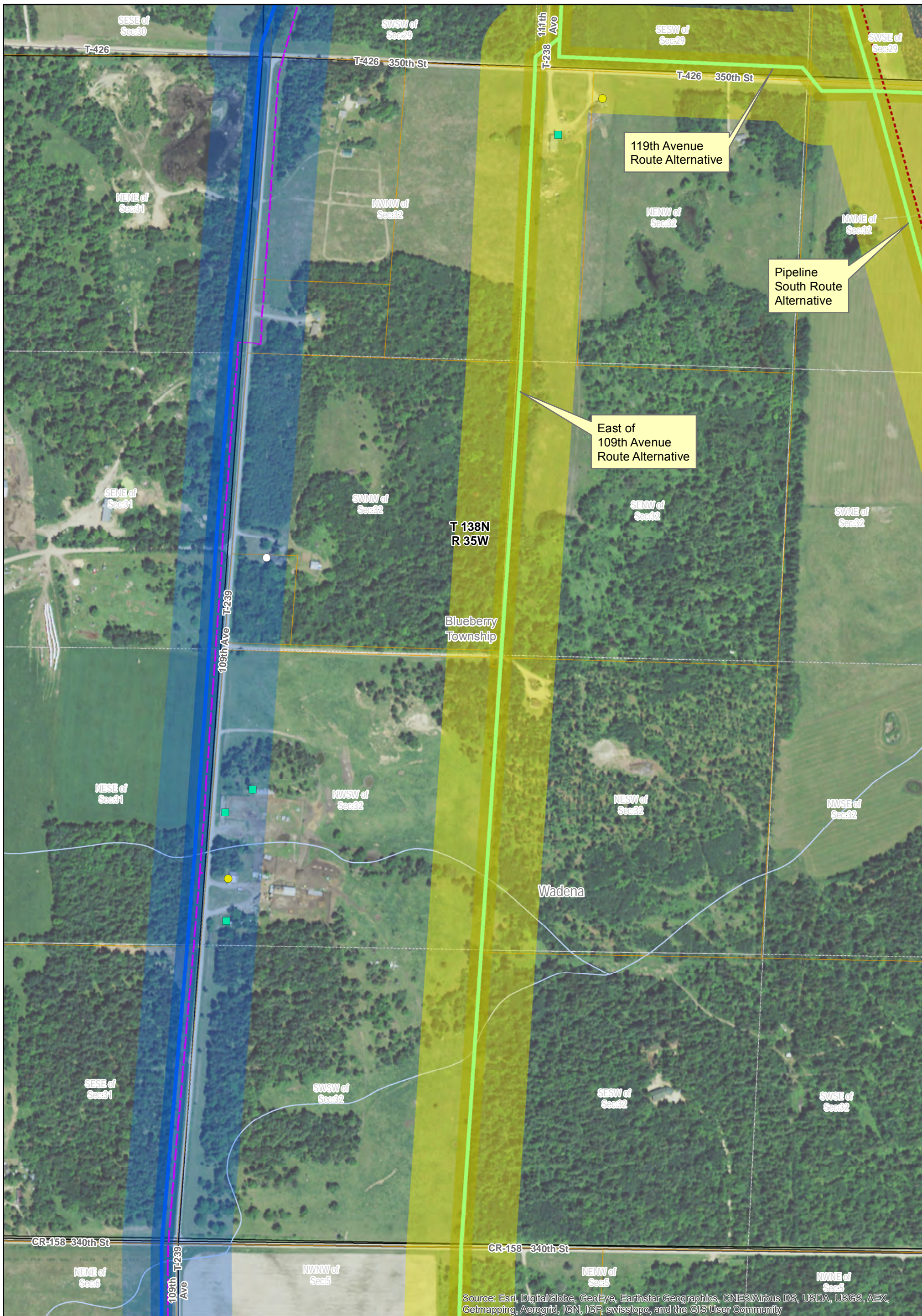
Source: Esri, DigitalGlobe, GeoEye, Earthstar Geographics, CNES/Airbus DS, USDA, USGS, AEX, Getmapping, Aerogrid, IGN, IGP, swisstopo, and the GIS User Community

<p><b>Applicant</b></p> <ul style="list-style-type: none"> <li>Proposed Alignment</li> <li>Proposed Route (500' width)</li> <li>Proposed Easement Area (100' width)</li> <li>Proposed Substation</li> </ul> <p><b>Alternatives</b></p> <ul style="list-style-type: none"> <li>Alternative Alignment – Single Circuit 115 kV</li> <li>Alternative Easement Area (100' width)</li> <li>Alternative Substation</li> </ul>	<p><b>Existing</b></p> <ul style="list-style-type: none"> <li>34.5 kV Transmission Line</li> <li>115 kV Transmission Line</li> <li>230 kV Transmission Line</li> <li>250 kV Transmission Line</li> <li>Oil pipeline</li> <li>Gas pipeline</li> <li>Substation</li> <li>Substation Fence</li> </ul>	<p><b>Residence</b></p> <ul style="list-style-type: none"> <li>Residence 50-100'</li> <li>Residence 100-150'</li> <li>Residence 150-200'</li> <li>Residence 200-250'</li> </ul> <p><b>Non-Residential Building</b></p> <ul style="list-style-type: none"> <li>Non-Residential Building 0-250'</li> <li>Cemeteries</li> <li>Gravel Pits</li> </ul>		<p>Map Sheet 16 of 30</p> <p>Route Maps</p> <p>Menahga Area 115 kV Project</p> <p>Data Sources Vary Between MNDOT, MNDNR, MNGEO and Great River Energy Aerial Image from ESRI Web service Map Projection: UTM NAD 83 Zone 15</p> <p>0 225 Feet Updated: 7/29/2015</p>
--	--	---	--	---



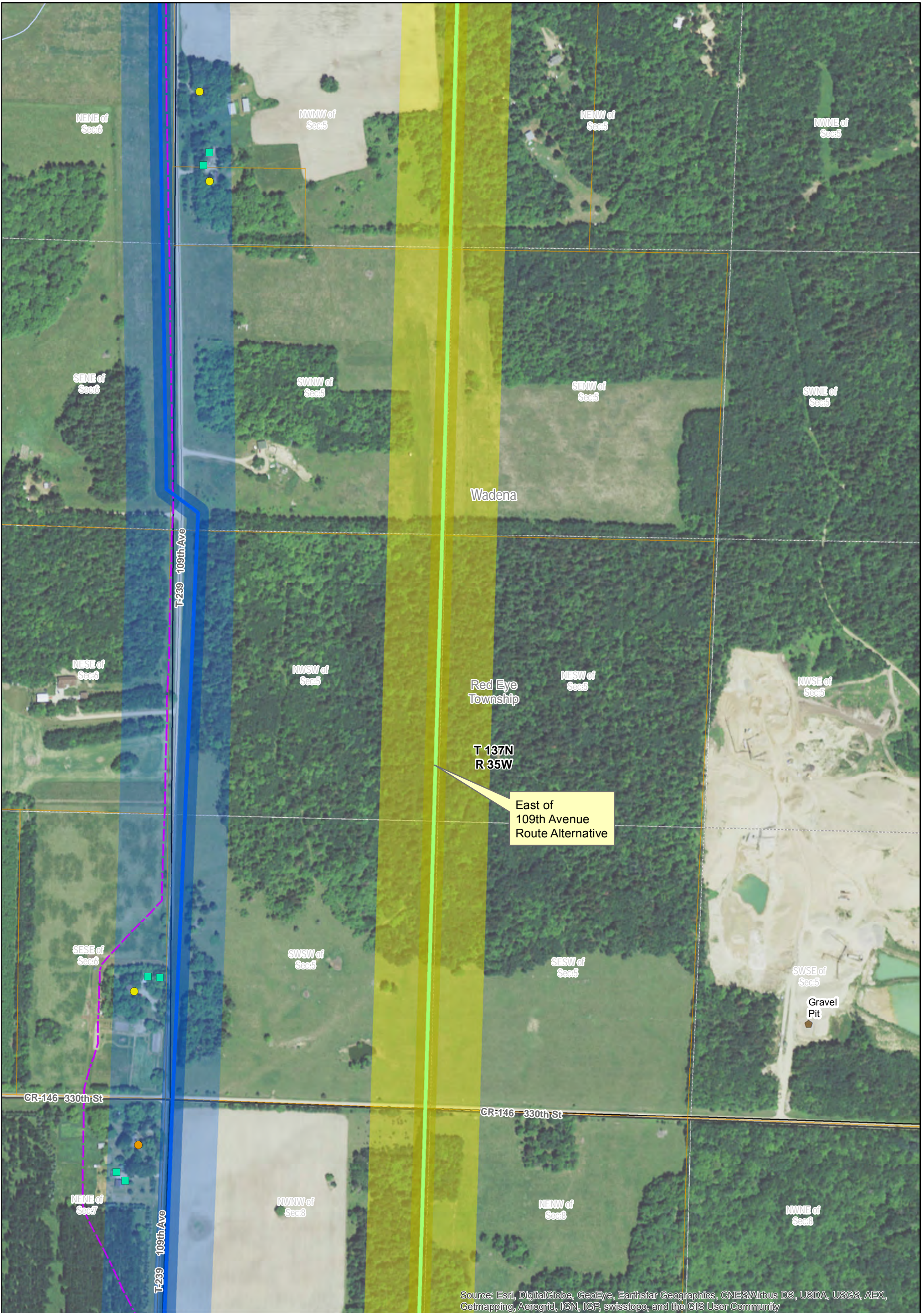
Source: Esri, DigitalGlobe, GeoEye, Earthstar Geographics, CNES/Airbus DS, USDA, USGS, AEX, Getmapping, Aerogrid, IGN, IGP, swisstopo, and the GIS User Community

<p><b>Applicant</b></p> <ul style="list-style-type: none"> <li>Proposed Alignment</li> <li>Proposed Route (500' width)</li> <li>Proposed Easement Area (100' width)</li> <li>Proposed Substation</li> </ul> <p><b>Alternatives</b></p> <ul style="list-style-type: none"> <li>Alternative Alignment – Single Circuit 115 kV</li> <li>Alternative Easement Area (100' width)</li> <li>Alternative Substation</li> </ul>	<p><b>Existing</b></p> <ul style="list-style-type: none"> <li>34.5 kV Transmission Line</li> <li>115 kV Transmission Line</li> <li>230 kV Transmission Line</li> <li>250 kV Transmission Line</li> <li>Oil pipeline</li> <li>Gas pipeline</li> <li>Substation</li> <li>Substation Fence</li> </ul>	<p><b>Residence</b></p> <ul style="list-style-type: none"> <li>Residence 50-100'</li> <li>Residence 100-150'</li> <li>Residence 150-200'</li> <li>Residence 200-250'</li> </ul> <p><b>Non-Residential Building</b></p> <ul style="list-style-type: none"> <li>Non-Residential Building 0-250'</li> <li>Cemeteries</li> <li>GravelPits</li> </ul>		<p>Map Sheet 17 of 30</p> <p>Route Maps</p> <p>Menahga Area 115 kV Project</p> <p>Data Sources Vary Between MNDOT, MNDNR, MNGEO and Great River Energy Aerial Image from ESRI Web service Map Projection: UTM NAD 83 Zone 15</p> <p>0 225 Feet Updated: 7/29/2015</p>
--	--	--	--	---



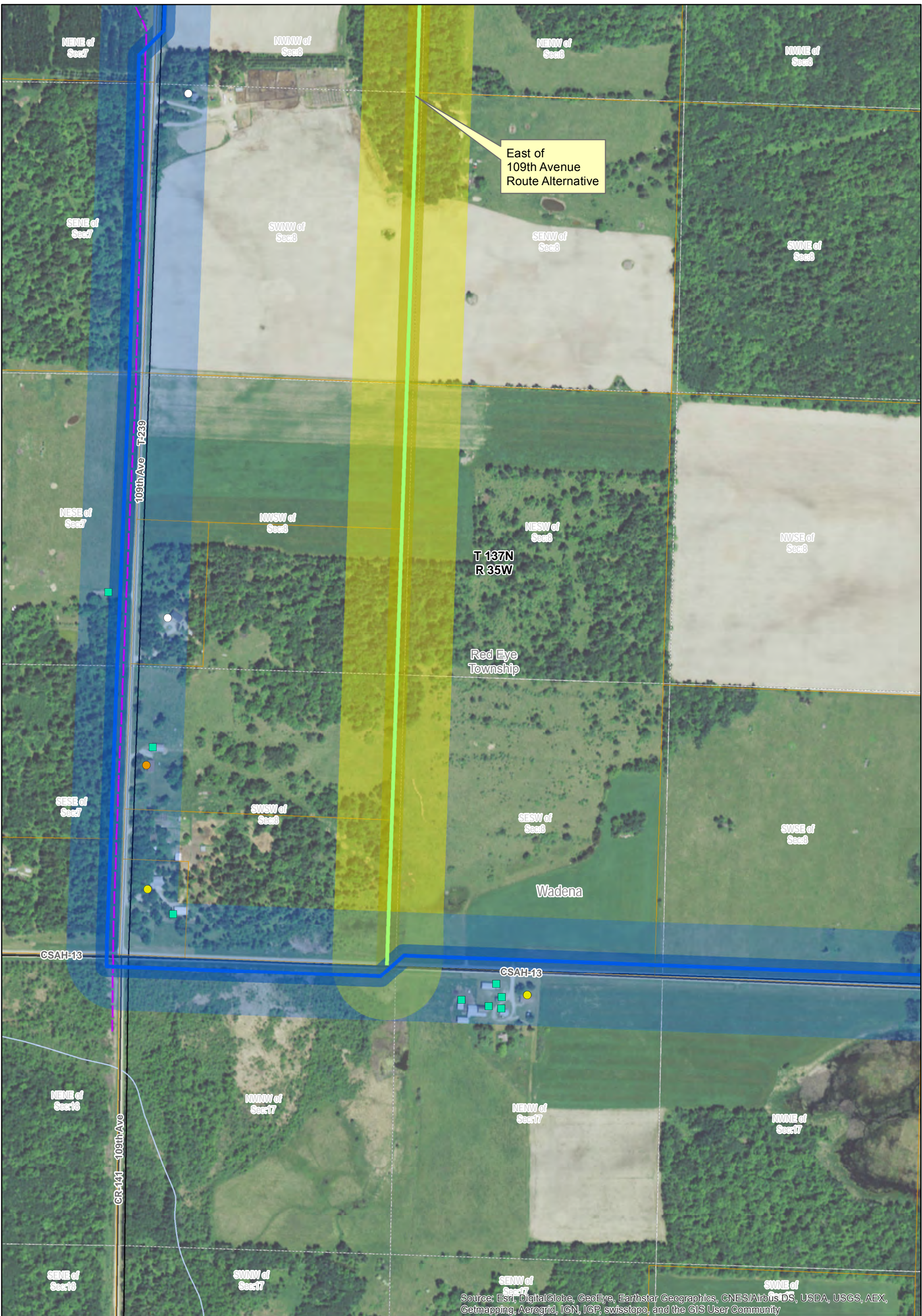
Source: Esri, DigitalGlobe, GeoEye, Earthstar Geographics, CNES/Airbus DS, USDA, USGS, AEX, Getmapping, Aerogrid, IGN, IGP, swisstopo, and the GIS User Community

<b>Applicant</b> Proposed Alignment Proposed Route (500' width) Proposed Easement Area (100' width) Proposed Substation <b>Alternatives</b> Alternative Alignment – Single Circuit 115 kV Alternative Easement Area (100' width) Alternative Substation		<b>Existing</b> 34.5 kV Transmission Line 115 kV Transmission Line 230 kV Transmission Line 250 kV Transmission Line Oil pipeline Gas pipeline Substation Substation Fence		<b>Residence</b> Residence 50-100' Residence 100-150' Residence 150-200' Residence 200-250' <b>Non-Residential Building</b> Non-Residential Building 0-250' Cemeteries GravelPits			<p>Map Sheet 18 of 30</p> <p>Route Maps</p> <p>Menahga Area 115 kV Project</p> <p>Data Sources Vary Between MNDOT, MNDNR, MNGEO and Great River Energy Aerial Image from ESRI Web service          Map Projection: UTM NAD 83 Zone 15</p> <p>0 225 Feet          Updated: 7/29/2015</p>
---	--	--	--	---	--	--	---



Source: Esri, DigitalGlobe, GeoEye, Earthstar Geographics, CNES/Airbus DS, USDA, USGS, AEX, Getmapping, Aerogrid, IGN, IGP, swisstopo, and the GIS User Community

<p><b>Applicant</b></p> <ul style="list-style-type: none"> <li>Proposed Alignment</li> <li>Proposed Route (500' width)</li> <li>Proposed Easement Area (100' width)</li> <li>Proposed Substation</li> </ul> <p><b>Alternatives</b></p> <ul style="list-style-type: none"> <li>Alternative Alignment – Single Circuit 115 kV</li> <li>Alternative Easement Area (100' width)</li> <li>Alternative Substation</li> </ul>	<p><b>Existing</b></p> <ul style="list-style-type: none"> <li>34.5 kV Transmission Line</li> <li>115 kV Transmission Line</li> <li>230 kV Transmission Line</li> <li>250 kV Transmission Line</li> <li>Oil pipeline</li> <li>Gas pipeline</li> <li>Substation</li> <li>Substation Fence</li> </ul>	<p><b>Residence</b></p> <ul style="list-style-type: none"> <li>Residence 50-100'</li> <li>Residence 100-150'</li> <li>Residence 150-200'</li> <li>Residence 200-250'</li> </ul> <p><b>Non-Residential Building</b></p> <ul style="list-style-type: none"> <li>Non-Residential Building 0-250'</li> <li>Cemeteries</li> <li>GravelPits</li> </ul>		<p>Map Sheet 19 of 30</p> <p>Route Maps</p> <p>Menahga Area 115 kV Project</p> <p>Data Sources Vary Between MNDOT, MNDNR, MNGEO and Great River Energy Aerial Image from ESRI Web service Map Projection: UTM NAD 83 Zone 15</p> <p>0 225 Feet Updated: 7/29/2015</p>
--	--	--	--	---



Source: Esri, DigitalGlobe, GeoEye, Earthstar Geographics, CNES/Airbus DS, USDA, USGS, AEX, Getmapping, Aerogrid, IGN, IGP, swisstopo, and the GIS User Community

<p><b>Applicant</b></p> <ul style="list-style-type: none"> <li>Proposed Alignment</li> <li>Proposed Route (500' width)</li> <li>Proposed Easement Area (100' width)</li> <li>Proposed Substation</li> </ul> <p><b>Alternatives</b></p> <ul style="list-style-type: none"> <li>Alternative Alignment – Single Circuit 115 kV</li> <li>Alternative Easement Area (100' width)</li> <li>Alternative Substation</li> </ul>	<p><b>Existing</b></p> <ul style="list-style-type: none"> <li>34.5 kV Transmission Line</li> <li>115 kV Transmission Line</li> <li>230 kV Transmission Line</li> <li>250 kV Transmission Line</li> <li>Oil pipeline</li> <li>Gas pipeline</li> <li>Substation</li> <li>Substation Fence</li> </ul>	<p><b>Residence</b></p> <ul style="list-style-type: none"> <li>Residence 50-100'</li> <li>Residence 100-150'</li> <li>Residence 150-200'</li> <li>Residence 200-250'</li> </ul> <p><b>Non-Residential Building</b></p> <ul style="list-style-type: none"> <li>Non-Residential Building 0-250'</li> <li>Cemeteries</li> <li>GravelPits</li> </ul>		<p>Map Sheet 20 of 30</p> <p>Route Maps</p> <p>Menahga Area 115 kV Project</p> <p>Data Sources Vary Between MNDOT, MNDNR, MNGEO and Great River Energy Aerial Image from ESRI Web service Map Projection: UTM NAD 83 Zone 15</p> <p>0 225 Feet Updated: 7/29/2015</p>
--	--	--	--	---

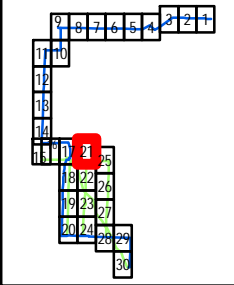


Source: Esri, DigitalGlobe, GeoEye, Earthstar Geographics, CNES/Airbus DS, USDA, USGS, AEX, Getmapping, Aerogrid, IGN, IGP, swisstopo, and the GIS User Community

Applicant	
	Proposed Alignment
	Proposed Route (500' width)
	Proposed Easement Area (100' width)
	Proposed Substation
Alternatives	
	Alternative Alignment – Single Circuit 115 kV
	Alternative Easement Area (100' width)
	Alternative Substation

Existing	
	34.5 kV Transmission Line
	115 kV Transmission Line
	230 kV Transmission Line
	250 kV Transmission Line
	Oil pipeline
	Gas pipeline
	Substation
	Substation Fence

Residence	
	Residence 50-100'
	Residence 100-150'
	Residence 150-200'
	Residence 200-250'
Non-Residential Building	
	Non-Residential Building 0-250'
	Cemeteries
	GravelPits



Map Sheet 21 of 30

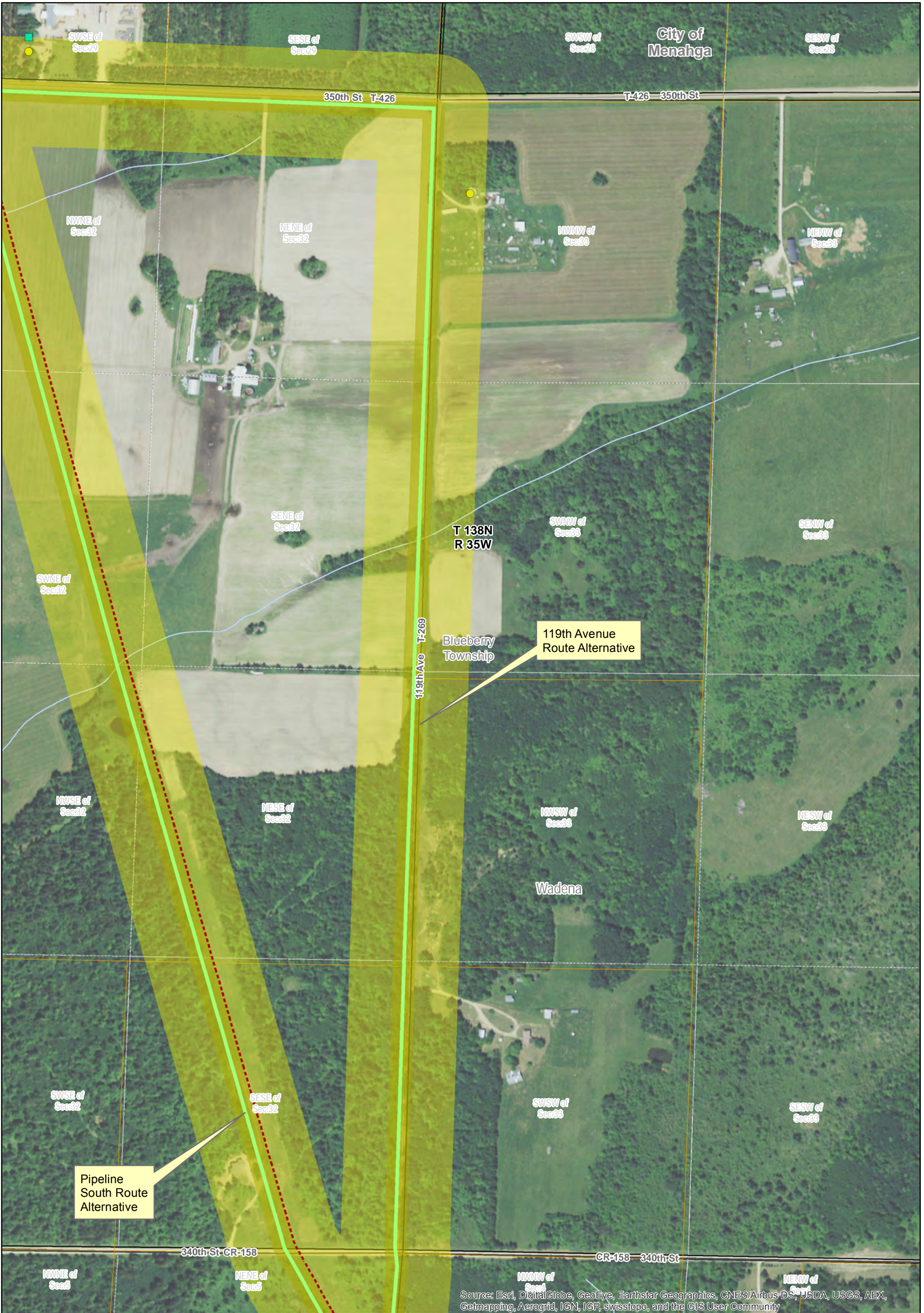
### Route Maps

Menahga Area 115 kV Project

Data Sources Vary Between MNDOT, MNDNR, MNGEO and Great River Energy Aerial Image from ESRI Web service  
 Map Projection: UTM NAD 83 Zone 15

0 225 Feet

Updated: 7/29/2015



Source: Esri, DigitalGlobe, GeoEye, Earthstar Geographics, CNES/Airbus DS, USDA, USGS, AEX, Getmapping, Aerogrid, IGN, IGP, swisstopo, and the GIS User Community

<p><b>Applicant</b></p> <ul style="list-style-type: none"> <li>Proposed Alignment</li> <li>Proposed Route (500' width)</li> <li>Proposed Easement Area (100' width)</li> <li>Proposed Substation</li> </ul> <p><b>Alternatives</b></p> <ul style="list-style-type: none"> <li>Alternative Alignment – Single Circuit 115 kV</li> <li>Alternative Easement Area (100' width)</li> <li>Alternative Substation</li> </ul>	<p><b>Existing</b></p> <ul style="list-style-type: none"> <li>34.5 kV Transmission Line</li> <li>115 kV Transmission Line</li> <li>230 kV Transmission Line</li> <li>250 kV Transmission Line</li> <li>Oil pipeline</li> <li>Gas pipeline</li> <li>Substation</li> <li>Substation Fence</li> </ul>	<p><b>Residence</b></p> <ul style="list-style-type: none"> <li>Residence 50-100'</li> <li>Residence 100-150'</li> <li>Residence 150-200'</li> <li>Residence 200-250'</li> </ul> <p><b>Non-Residential Building</b></p> <ul style="list-style-type: none"> <li>Non-Residential Building 0-250'</li> <li>Cemeteries</li> <li>GravelPits</li> </ul>		<p>Map Sheet 22 of 30</p> <p>Route Maps</p> <p>Menahga Area 115 kV Project</p> <p>Data Sources Vary Between MNDOT, MNDNR, MNGEO and Great River Energy Aerial Image from ESRI Web service Map Projection: UTM NAD 83 Zone 15</p> <p>0 225 Feet Updated: 7/29/2015</p>
--	--	--	--	---





<b>Applicant</b> Proposed Alignment Proposed Route (500' width) Proposed Easement Area (100' width) Proposed Substation <b>Alternatives</b> Alternative Alignment – Single Circuit 115 kV Alternative Easement Area (100' width) Alternative Substation		<b>Existing</b> 34.5 kV Transmission Line 115 kV Transmission Line 230 kV Transmission Line 250 kV Transmission Line Oil pipeline Gas pipeline Substation Substation Fence		<b>Residence</b> Residence 50-100' Residence 100-150' Residence 150-200' Residence 200-250' <b>Non-Residential Building</b> Non-Residential Building 0-250' Cemeteries GravelPits			<b>Map Sheet 23 of 30</b>  <b>Route Maps</b>  Menahga Area 115 kV Project  Data Sources Vary Between MNDOT, MNDNR, MNGEO and Great River Energy Aerial Image from ESRI Web service Map Projection: UTM NAD 83 Zone 15   Updated: 7/29/2015
<b>Applicant</b> Proposed Alignment Proposed Route (500' width) Proposed Easement Area (100' width) Proposed Substation <b>Alternatives</b> Alternative Alignment – Single Circuit 115 kV Alternative Easement Area (100' width) Alternative Substation		<b>Existing</b> 34.5 kV Transmission Line 115 kV Transmission Line 230 kV Transmission Line 250 kV Transmission Line Oil pipeline Gas pipeline Substation Substation Fence		<b>Residence</b> Residence 50-100' Residence 100-150' Residence 150-200' Residence 200-250' <b>Non-Residential Building</b> Non-Residential Building 0-250' Cemeteries GravelPits			



119th Avenue  
Route Alternative

T 137N  
R 35W

Red Eye  
Township

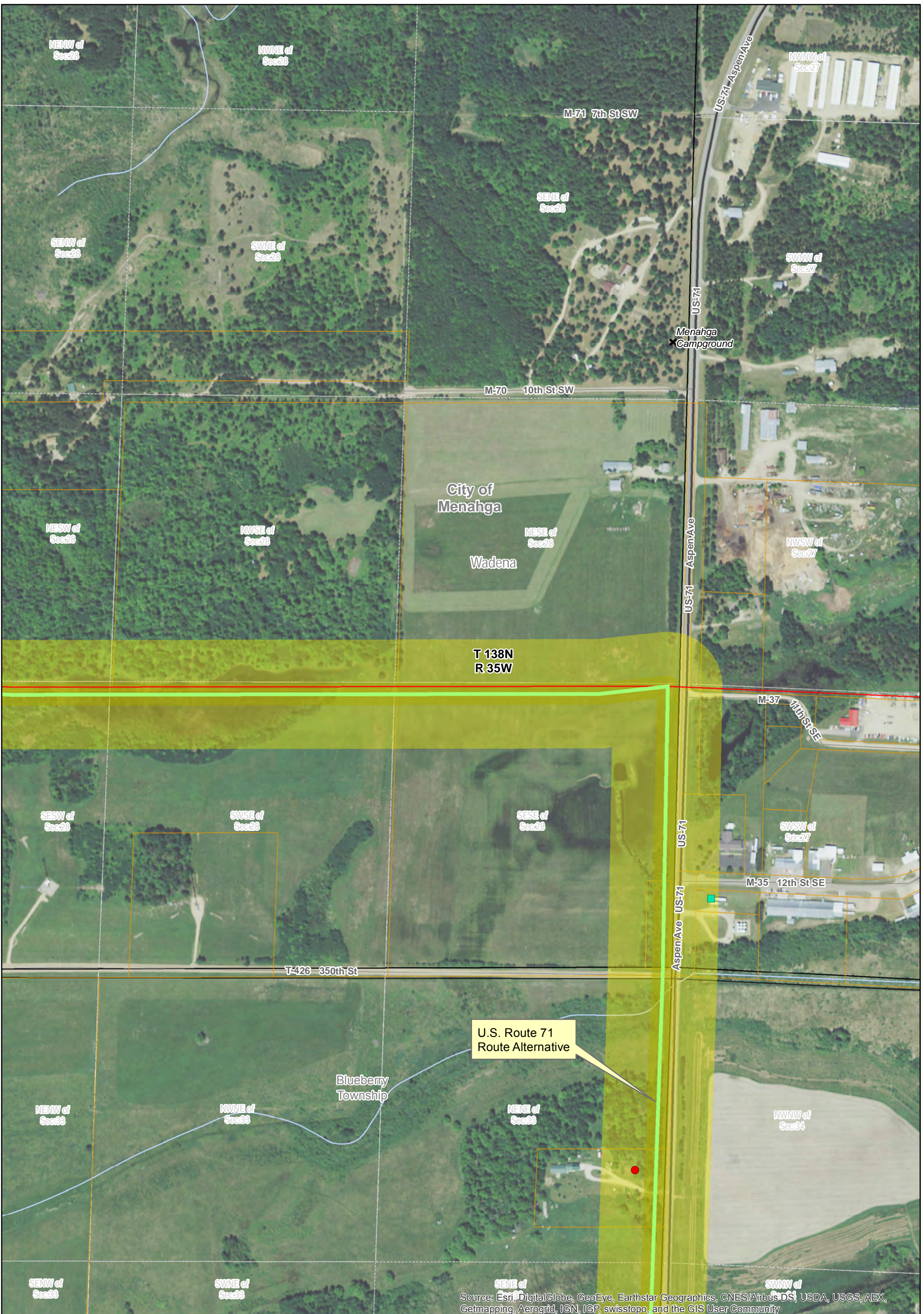
Wadena

CSAH-13

CSAH-13

Source: Esri, DigitalGlobe, GeoEye, Earthstar Geographics, CNES/Airbus DS, USDA, USGS, AEXIE of Getmapping, Aerogrid, IGN, IGP, swisstopo, and the GIS User Community

<p><b>Applicant</b></p> <ul style="list-style-type: none"> <li><span style="color: blue;">—</span> Proposed Alignment</li> <li><span style="background-color: lightblue; border: 1px solid blue; display: inline-block; width: 20px; height: 10px;"></span> Proposed Route (500' width)</li> <li><span style="background-color: lightblue; border: 1px solid blue; display: inline-block; width: 20px; height: 10px; opacity: 0.5;"></span> Proposed Easement Area (100' width)</li> <li><span style="background-color: blue; width: 10px; height: 10px; display: inline-block;"></span> Proposed Substation</li> </ul> <p><b>Alternatives</b></p> <ul style="list-style-type: none"> <li><span style="border-bottom: 2px solid green; width: 20px; display: inline-block;"></span> Alternative Alignment – Single Circuit 115 kV</li> <li><span style="background-color: yellow; border: 1px solid yellow; display: inline-block; width: 20px; height: 10px;"></span> Alternative Easement Area (100' width)</li> <li><span style="background-color: yellow; width: 10px; height: 10px; display: inline-block;"></span> Alternative Substation</li> </ul>	<p><b>Existing</b></p> <ul style="list-style-type: none"> <li><span style="border-bottom: 2px solid red; width: 20px; display: inline-block;"></span> 34.5 kV Transmission Line</li> <li><span style="border-bottom: 2px dashed red; width: 20px; display: inline-block;"></span> 115 kV Transmission Line</li> <li><span style="border-bottom: 2px solid red; width: 20px; display: inline-block; opacity: 0.5;"></span> 230 kV Transmission Line</li> <li><span style="border-bottom: 2px solid red; width: 20px; display: inline-block; opacity: 0.2;"></span> 250 kV Transmission Line</li> <li><span style="border-bottom: 2px dashed red; width: 20px; display: inline-block; opacity: 0.5;"></span> Oil pipeline</li> <li><span style="border-bottom: 2px solid purple; width: 20px; display: inline-block;"></span> Gas pipeline</li> <li><span style="background-color: gray; width: 10px; height: 10px; display: inline-block;"></span> Substation</li> <li><span style="border: 1px solid black; width: 15px; height: 10px; display: inline-block;"></span> Substation Fence</li> </ul>	<p><b>Residence</b></p> <ul style="list-style-type: none"> <li><span style="color: red;">●</span> Residence 50-100'</li> <li><span style="color: orange;">●</span> Residence 100-150'</li> <li><span style="color: yellow;">●</span> Residence 150-200'</li> <li><span style="color: white; border: 1px solid black; border-radius: 50%; width: 10px; height: 10px; display: inline-block;"></span> Residence 200-250'</li> </ul> <p><b>Non-Residential Building</b></p> <ul style="list-style-type: none"> <li><span style="background-color: cyan; width: 10px; height: 10px; display: inline-block;"></span> Non-Residential Building 0-250'</li> <li><span style="background-color: cyan; width: 10px; height: 10px; display: inline-block; opacity: 0.5;"></span> Cemeteries</li> <li><span style="background-color: brown; width: 10px; height: 10px; display: inline-block;"></span> GravelPits</li> </ul>		<p style="text-align: right;">Map Sheet 24 of 30</p> <p style="text-align: center;">Route Maps</p> <p style="text-align: center;">Menahga Area 115 kV Project</p> <p>Data Sources Vary Between MNDOT, MNDNR, MNGEO and Great River Energy Aerial Image from ESRI Web service Map Projection: UTM NAD 83 Zone 15</p> <div style="text-align: right;"> <p>N</p> <p>0 225 Feet</p> <p>Updated: 7/29/2015</p> </div>
--	--	---	--	--



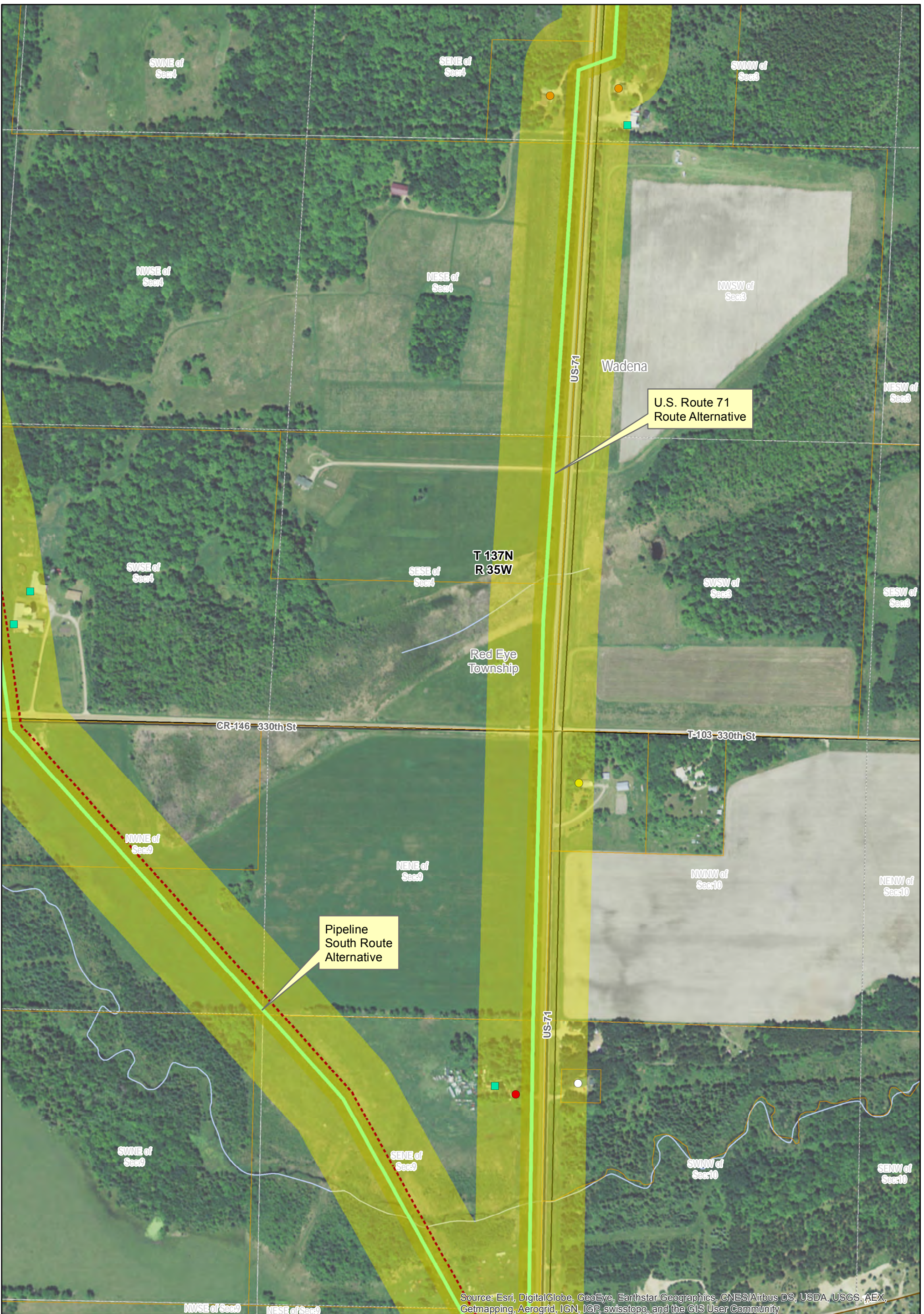
Source: Esri, DigitalGlobe, GeoEye, Earthstar Geographics, CNES/Airbus DS, USDA, USGS, AEX, Getmapping, Aerogrid, IGN, IGP, swisstopo, and the GIS User Community

<p><b>Applicant</b></p> <ul style="list-style-type: none"> <li>Proposed Alignment</li> <li>Proposed Route (500' width)</li> <li>Proposed Easement Area (100' width)</li> <li>Proposed Substation</li> </ul> <p><b>Alternatives</b></p> <ul style="list-style-type: none"> <li>Alternative Alignment – Single Circuit 115 kV</li> <li>Alternative Easement Area (100' width)</li> <li>Alternative Substation</li> </ul>	<p><b>Existing</b></p> <ul style="list-style-type: none"> <li>34.5 kV Transmission Line</li> <li>115 kV Transmission Line</li> <li>230 kV Transmission Line</li> <li>250 kV Transmission Line</li> <li>Oil pipeline</li> <li>Gas pipeline</li> <li>Substation</li> <li>Substation Fence</li> </ul>	<p><b>Residence</b></p> <ul style="list-style-type: none"> <li>Residence 50-100'</li> <li>Residence 100-150'</li> <li>Residence 150-200'</li> <li>Residence 200-250'</li> </ul> <p><b>Non-Residential Building</b></p> <ul style="list-style-type: none"> <li>Non-Residential Building 0-250'</li> <li>Cemeteries</li> <li>GravelPits</li> </ul>		<p>Map Sheet 25 of 30</p> <p>Route Maps</p> <p>Menahga Area 115 kV Project</p> <p>Data Sources Vary Between MNDOT, MNDNR, MNGEO and Great River Energy Aerial Image from ESRI Web service Map Projection: UTM NAD 83 Zone 15</p> <p>0 225 Feet Updated: 7/29/2015</p>
--	--	--	--	---



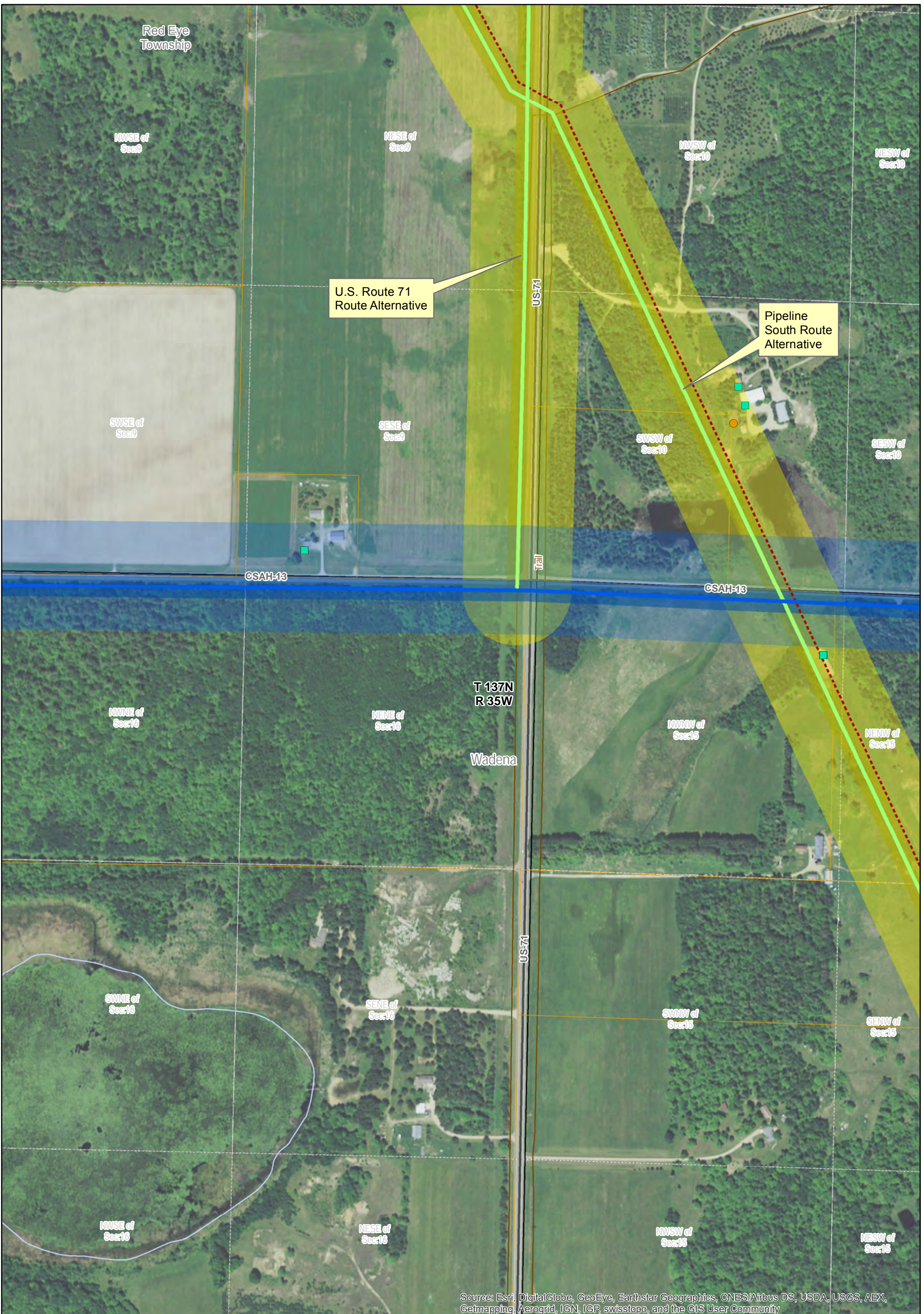
Source: Esri, DigitalGlobe, GeoEye, Earthstar Geographics, CNES/Airbus DS, USDA, USGS, AEX, Getmapping, Aerogrid, IGN, IGP, swisstopo, and the GIS User Community

<p><b>Applicant</b></p> <ul style="list-style-type: none"> <li>Proposed Alignment</li> <li>Proposed Route (500' width)</li> <li>Proposed Easement Area (100' width)</li> <li>Proposed Substation</li> </ul> <p><b>Alternatives</b></p> <ul style="list-style-type: none"> <li>Alternative Alignment – Single Circuit 115 kV</li> <li>Alternative Easement Area (100' width)</li> <li>Alternative Substation</li> </ul>	<p><b>Existing</b></p> <ul style="list-style-type: none"> <li>34.5 kV Transmission Line</li> <li>115 kV Transmission Line</li> <li>230 kV Transmission Line</li> <li>250 kV Transmission Line</li> <li>Oil pipeline</li> <li>Gas pipeline</li> <li>Substation</li> <li>Substation Fence</li> </ul>	<p><b>Residence</b></p> <ul style="list-style-type: none"> <li>Residence 50-100'</li> <li>Residence 100-150'</li> <li>Residence 150-200'</li> <li>Residence 200-250'</li> </ul> <p><b>Non-Residential Building</b></p> <ul style="list-style-type: none"> <li>Non-Residential Building 0-250'</li> <li>Cemeteries</li> <li>GravelPits</li> </ul>		<p style="text-align: right;">Map Sheet 26 of 30</p> <p style="text-align: center;">Route Maps</p> <p style="text-align: center;">Menahga Area 115 kV Project</p> <p>Data Sources Vary Between MNDOT, MNDNR, MNGEO and Great River Energy Aerial Image from ESRI Web service Map Projection: UTM NAD 83 Zone 15</p> <p style="text-align: right;">0 225 Feet Updated: 7/29/2015</p>
--	--	--	--	---



Source: Esri, DigitalGlobe, GeoEye, Earthstar Geographics, CNES/Airbus DS, USDA, USGS, AEX, Getmapping, Aerogrid, IGN, IGP, swisstopo, and the GIS User Community

<p><b>Applicant</b></p> <ul style="list-style-type: none"> <li>Proposed Alignment</li> <li>Proposed Route (500' width)</li> <li>Proposed Easement Area (100' width)</li> <li>Proposed Substation</li> </ul> <p><b>Alternatives</b></p> <ul style="list-style-type: none"> <li>Alternative Alignment – Single Circuit 115 kV</li> <li>Alternative Easement Area (100' width)</li> <li>Alternative Substation</li> </ul>	<p><b>Existing</b></p> <ul style="list-style-type: none"> <li>34.5 kV Transmission Line</li> <li>115 kV Transmission Line</li> <li>230 kV Transmission Line</li> <li>250 kV Transmission Line</li> <li>Oil pipeline</li> <li>Gas pipeline</li> <li>Substation</li> <li>Substation Fence</li> </ul>	<p><b>Residence</b></p> <ul style="list-style-type: none"> <li>Residence 50-100'</li> <li>Residence 100-150'</li> <li>Residence 150-200'</li> <li>Residence 200-250'</li> </ul> <p><b>Non-Residential Building</b></p> <ul style="list-style-type: none"> <li>Non-Residential Building 0-250'</li> <li>Cemeteries</li> <li>GravelPits</li> </ul>		<p>Map Sheet 27 of 30</p> <p>Route Maps</p> <p>Menahga Area 115 kV Project</p> <p>Data Sources Vary Between MNDOT, MNDNR, MNGEO and Great River Energy Aerial Image from ESRI Web service Map Projection: UTM NAD 83 Zone 15</p> <p>0 225 Feet Updated: 7/29/2015</p>
--	--	--	--	---

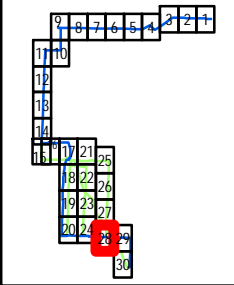


Source: Esri, DigitalGlobe, GeoEye, Earthstar Geographics, CNES/Airbus DS, USDA, USGS, AEX, Getmapping, Aerogrid, IGN, IGP, swisstopo, and the GIS User Community

- Applicant**
- Proposed Alignment
  - Proposed Route (500' width)
  - Proposed Easement Area (100' width)
  - Proposed Substation
- Alternatives**
- Alternative Alignment – Single Circuit 115 kV
  - Alternative Easement Area (100' width)
  - Alternative Substation

- Existing**
- 34.5 kV Transmission Line
  - 115 kV Transmission Line
  - 230 kV Transmission Line
  - 250 kV Transmission Line
  - Oil pipeline
  - Gas pipeline
  - Substation
  - Substation Fence

- Residence**
- Residence 50-100'
  - Residence 100-150'
  - Residence 150-200'
  - Residence 200-250'
- Non-Residential Building**
- Non-Residential Building 0-250'
  - ⊕ Cemeteries
  - ⬮ GravelPits



Map Sheet 28 of 30

**Route Maps**

Menahga Area 115 kV Project

Data Sources Vary Between MNDOT, MNDNR, MNGEO and Great River Energy Aerial Image from ESRI Web service  
 Map Projection: UTM NAD 83 Zone 15

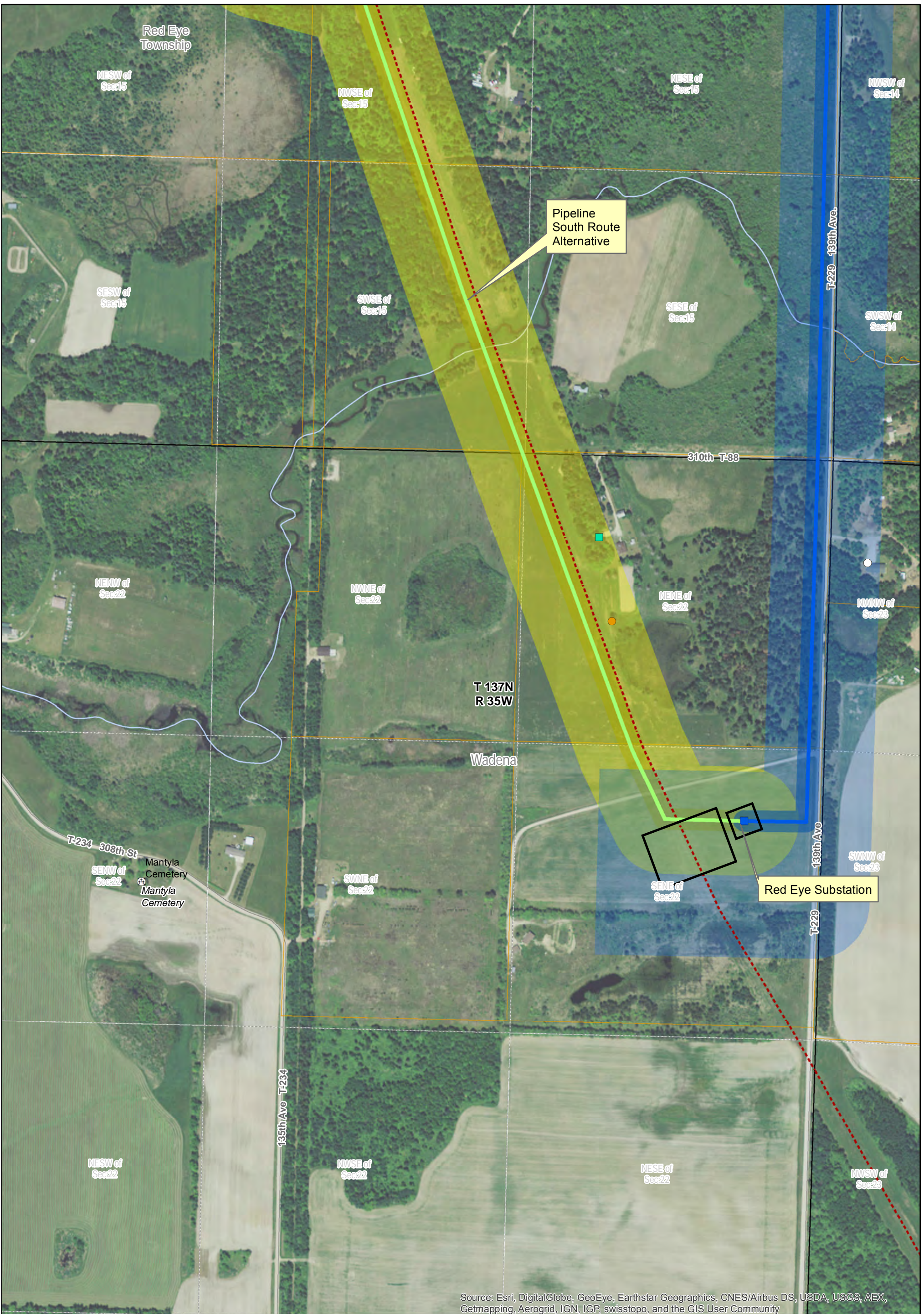
0 225 Feet

Updated: 7/29/2015



Source: Esri, DigitalGlobe, GeoEye, Earthstar Geographics, CNES/Airbus DS, USDA, USGS, AEX, Getmapping, Aerogrid, IGN, IGP, swisstopo, and the GIS User Community

<p><b>Applicant</b></p> <ul style="list-style-type: none"> <li>Proposed Alignment</li> <li>Proposed Route (500' width)</li> <li>Proposed Easement Area (100' width)</li> <li>Proposed Substation</li> </ul> <p><b>Alternatives</b></p> <ul style="list-style-type: none"> <li>Alternative Alignment – Single Circuit 115 kV</li> <li>Alternative Easement Area (100' width)</li> <li>Alternative Substation</li> </ul>	<p><b>Existing</b></p> <ul style="list-style-type: none"> <li>34.5 kV Transmission Line</li> <li>115 kV Transmission Line</li> <li>230 kV Transmission Line</li> <li>250 kV Transmission Line</li> <li>Oil pipeline</li> <li>Gas pipeline</li> <li>Substation</li> <li>Substation Fence</li> </ul>	<p><b>Residence</b></p> <ul style="list-style-type: none"> <li>Residence 50-100'</li> <li>Residence 100-150'</li> <li>Residence 150-200'</li> <li>Residence 200-250'</li> </ul> <p><b>Non-Residential Building</b></p> <ul style="list-style-type: none"> <li>Non-Residential Building 0-250'</li> <li>Cemeteries</li> <li>GravelPits</li> </ul>	<p>Map Sheet 29 of 30</p> <p>Route Maps</p> <p>Menahga Area 115 kV Project</p> <p>Data Sources Vary Between MNDOT, MNDNR, MNGEO and Great River Energy Aerial Image from ESRI Web service Map Projection: UTM NAD 83 Zone 15</p> <p>0 225 Feet Updated: 7/29/2015</p>
--	--	--	---



Source: Esri, DigitalGlobe, GeoEye, Earthstar Geographics, CNES/Airbus DS, USDA, USGS, AEX, Getmapping, Aerogrid, IGN, IGP, swisstopo, and the GIS User Community

<p><b>Applicant</b></p> <ul style="list-style-type: none"> <li>Proposed Alignment</li> <li>Proposed Route (500' width)</li> <li>Proposed Easement Area (100' width)</li> <li>Proposed Substation</li> </ul> <p><b>Alternatives</b></p> <ul style="list-style-type: none"> <li>Alternative Alignment – Single Circuit 115 kV</li> <li>Alternative Easement Area (100' width)</li> <li>Alternative Substation</li> </ul>	<p><b>Existing</b></p> <ul style="list-style-type: none"> <li>34.5 kV Transmission Line</li> <li>115 kV Transmission Line</li> <li>230 kV Transmission Line</li> <li>250 kV Transmission Line</li> <li>Oil pipeline</li> <li>Gas pipeline</li> <li>Substation</li> <li>Substation Fence</li> </ul>	<p><b>Residence</b></p> <ul style="list-style-type: none"> <li>Residence 50-100'</li> <li>Residence 100-150'</li> <li>Residence 150-200'</li> <li>Residence 200-250'</li> </ul> <p><b>Non-Residential Building</b></p> <ul style="list-style-type: none"> <li>Non-Residential Building 0-250'</li> <li>Cemeteries</li> <li>GravelPits</li> </ul>		<p>Map Sheet 30 of 30</p> <p>Route Maps</p> <p>Menahga Area 115 kV Project</p> <p>Data Sources Vary Between MNDOT, MNDNR, MNGEO and Great River Energy Aerial Image from ESRI Web service Map Projection: UTM NAD 83 Zone 15</p> <p>0 225 Feet Updated: 7/29/2015</p>
--	--	--	--	---



