

|                               |                                 |                                    |
|-------------------------------|---------------------------------|------------------------------------|
| Proposed Pipeline - Sandpiper | Milepost - Sandpiper            | Tract Boundary                     |
| Existing Enbridge Pipelines   | Potential Block Valve           | Facility Boundary                  |
| Foreign Pipes                 | Environmental Survey Area (ESA) | Previously Sited Facility Boundary |
| Transmission Lines            |                                 | Section Lines                      |
| SPREAD BREAK                  |                                 |                                    |

|       |         |          |      |         |               |
|-------|---------|----------|------|---------|---------------|
| MLB   |         | 10/10/13 | 0    |         |               |
| DRAWN | CHECKED | APPROVED | DATE | REV NO. | DESCRIPTION   |
|       |         |          |      |         | PUC Submittal |

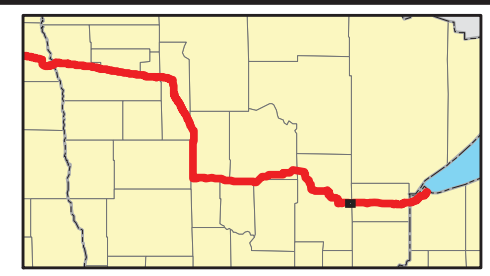
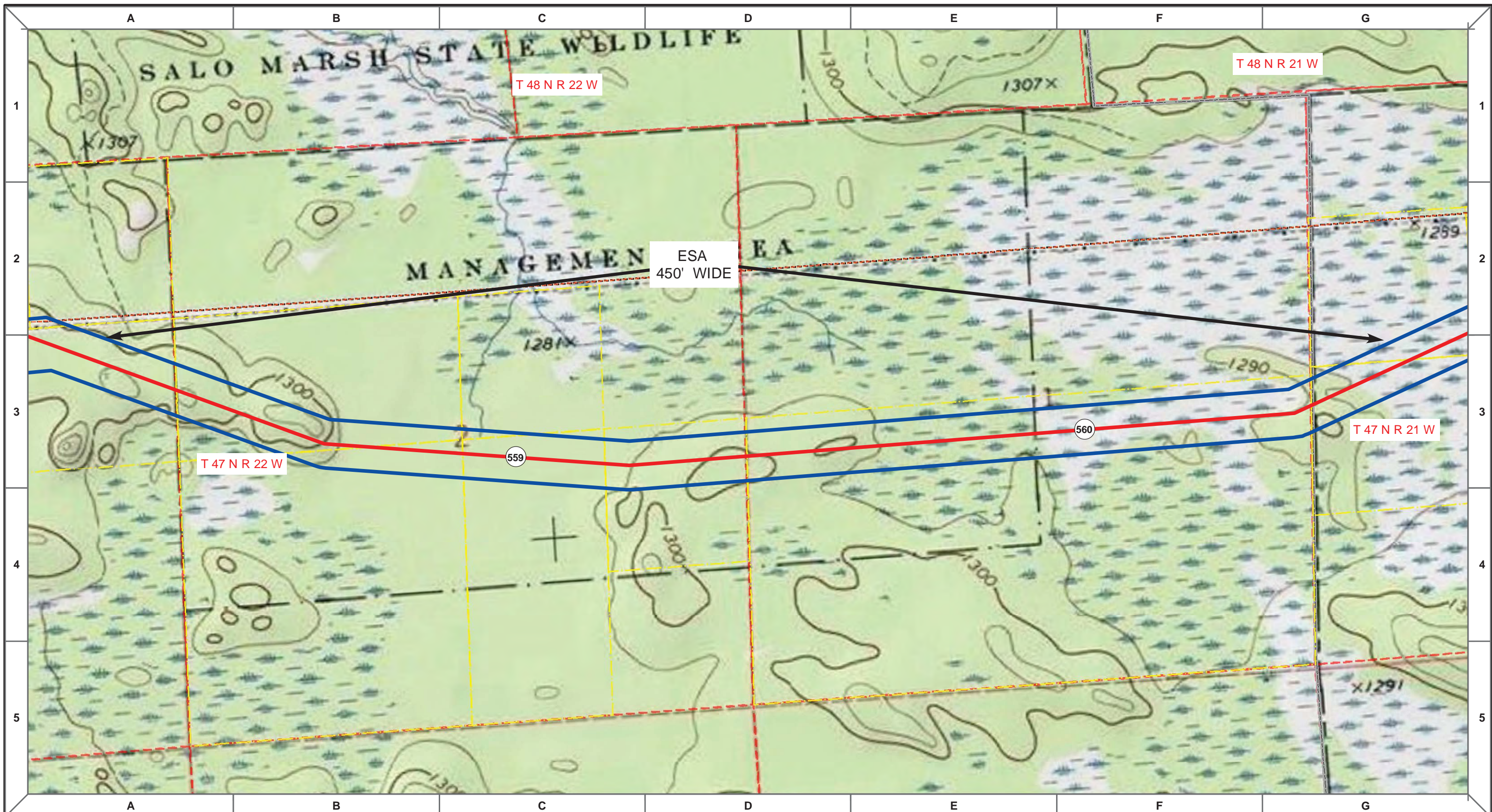
**ENBRIDGE PIPELINES (NORTH DAKOTA) LLC**

**PROPOSED SANDPIPER PIPELINE PROJECT**  
**ROUTE MAP**  
**Aitkin & Carlton County, MN**

|                                   |                                |
|-----------------------------------|--------------------------------|
| <small>DRAWN:</small> MLB         | <small>CHECKED:</small> --     |
| <small>DATE:</small> Oct 18, 2013 | <small>SCALE:</small> AS SHOWN |

Spread:8 Map: 107 of 128





|                               |                                 |                                    |
|-------------------------------|---------------------------------|------------------------------------|
| Proposed Pipeline - Sandpiper | Milepost - Sandpiper            | Tract Boundary                     |
| Existing Enbridge Pipelines   | Potential Block Valve           | Facility Boundary                  |
| Foreign Pipes                 | Environmental Survey Area (ESA) | Previously Sited Facility Boundary |
| Transmission Lines            |                                 | Section Lines                      |
| SPREAD BREAK                  |                                 |                                    |

500 250 0 500 1,000 Feet

|       |         |          |      |         |             |
|-------|---------|----------|------|---------|-------------|
| MLB   |         | 10/10/13 | 0    |         |             |
| DRAWN | CHECKED | APPROVED | DATE | REV NO. | DESCRIPTION |

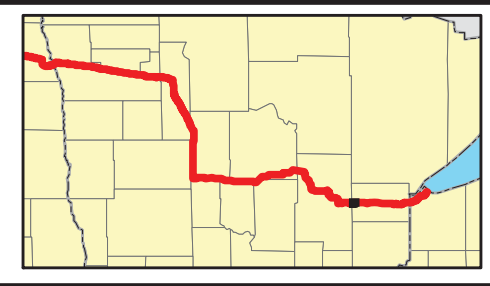
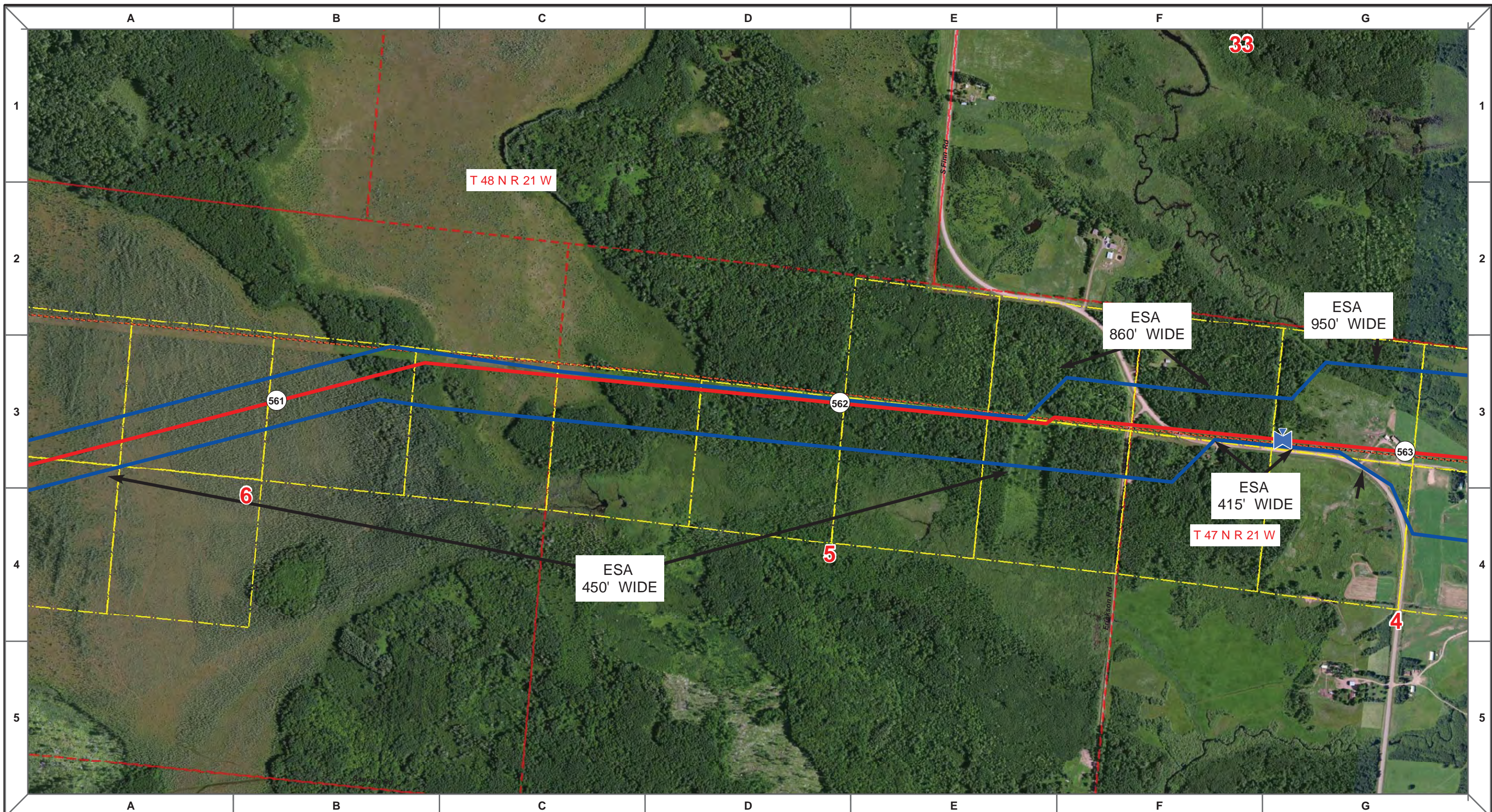
**ENBRIDGE PIPELINES (NORTH DAKOTA) LLC**

**PROPOSED SANDPIPER PIPELINE PROJECT**  
**ROUTE MAP**  
 Aitkin & Carlton County, MN

|                    |                 |
|--------------------|-----------------|
| DRAWN: MLB         | CHECKED: --     |
| DATE: Oct 18, 2013 | SCALE: AS SHOWN |

Spread:8 Map: 107 of 128





|                               |                                 |                                    |
|-------------------------------|---------------------------------|------------------------------------|
| Proposed Pipeline - Sandpiper | Milepost - Sandpiper            | Tract Boundary                     |
| Existing Enbridge Pipelines   | Potential Block Valve           | Facility Boundary                  |
| Foreign Pipes                 | Environmental Survey Area (ESA) | Previously Sited Facility Boundary |
| Transmission Lines            |                                 | Section Lines                      |
| SPREAD BREAK                  |                                 |                                    |

500 250 0 500 1,000 Feet

|       |         |          |      |         |               |
|-------|---------|----------|------|---------|---------------|
| MLB   |         | 10/10/13 | 0    |         |               |
| DRAWN | CHECKED | APPROVED | DATE | REV NO. | DESCRIPTION   |
|       |         |          |      |         | PUC Submittal |

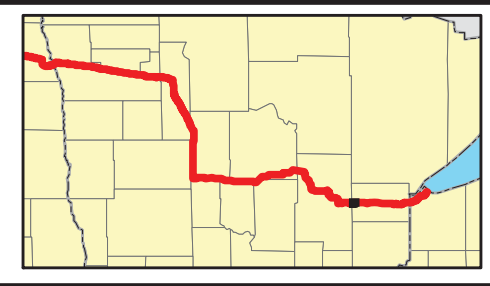
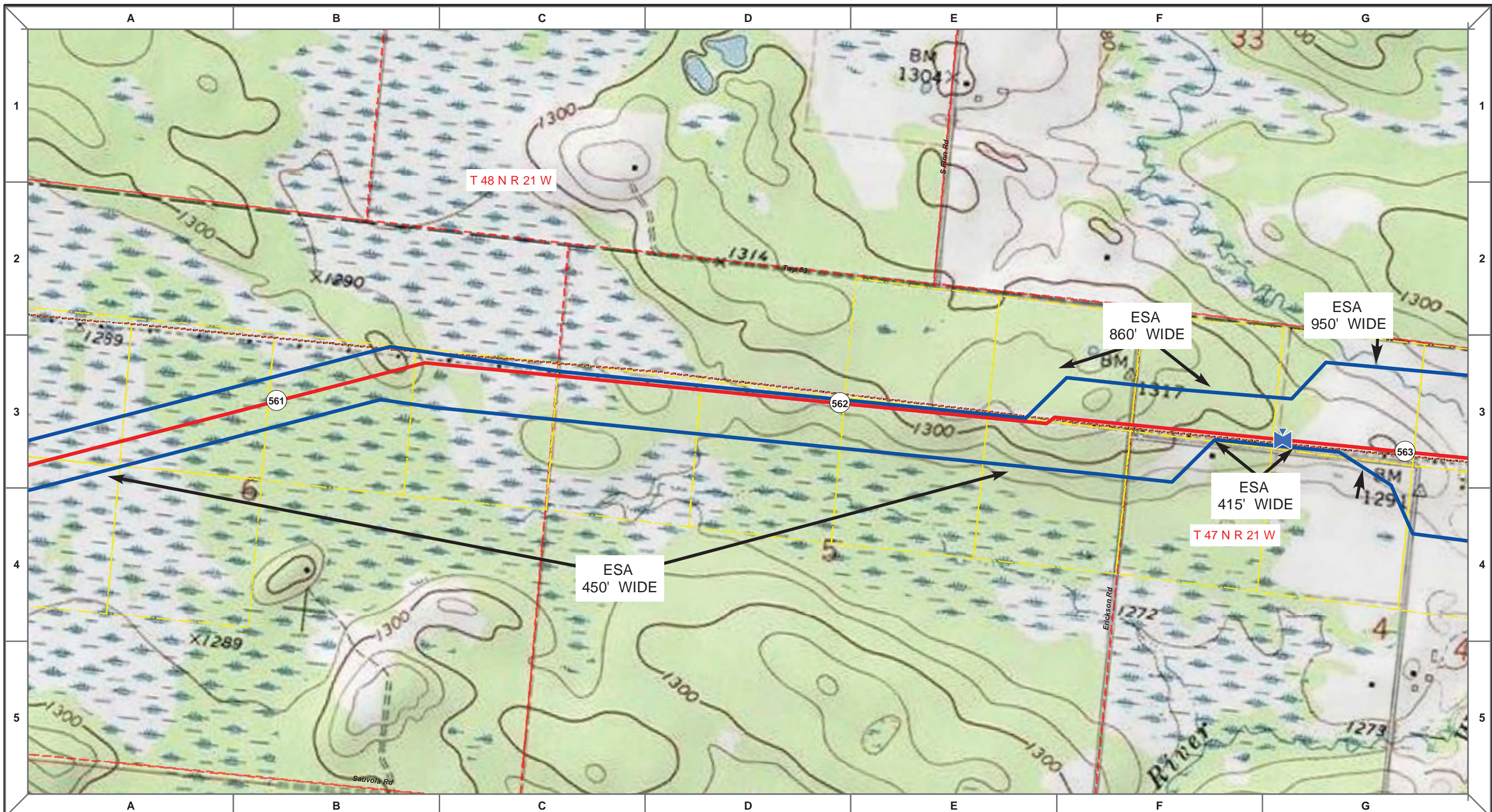
**ENBRIDGE PIPELINES (NORTH DAKOTA) LLC**

**PROPOSED SANDPIPER PIPELINE PROJECT  
ROUTE MAP  
Carlton County, MN**

|                    |                 |
|--------------------|-----------------|
| DRAWN: MLB         | CHECKED: --     |
| DATE: Oct 18, 2013 | SCALE: AS SHOWN |

Spread:8 Map: 108 of 128





|                               |                                 |                                    |
|-------------------------------|---------------------------------|------------------------------------|
| Proposed Pipeline - Sandpiper | Milepost - Sandpiper            | Tract Boundary                     |
| Existing Enbridge Pipelines   | Potential Block Valve           | Facility Boundary                  |
| Foreign Pipes                 | Environmental Survey Area (ESA) | Previously Sited Facility Boundary |
| Transmission Lines            |                                 | Section Lines                      |
| SPREAD BREAK                  |                                 |                                    |

500 250 0 500 1,000 Feet

| MLB | DATE     | REV NO. | DESCRIPTION   |
|-----|----------|---------|---------------|
|     | 10/10/13 | 0       | PUC Submittal |
|     |          |         |               |
|     |          |         |               |
|     |          |         |               |
|     |          |         |               |
|     |          |         |               |
|     |          |         |               |
|     |          |         |               |
|     |          |         |               |
|     |          |         |               |

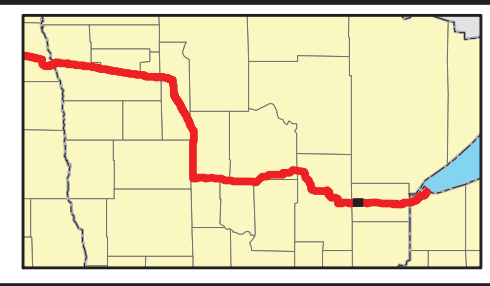
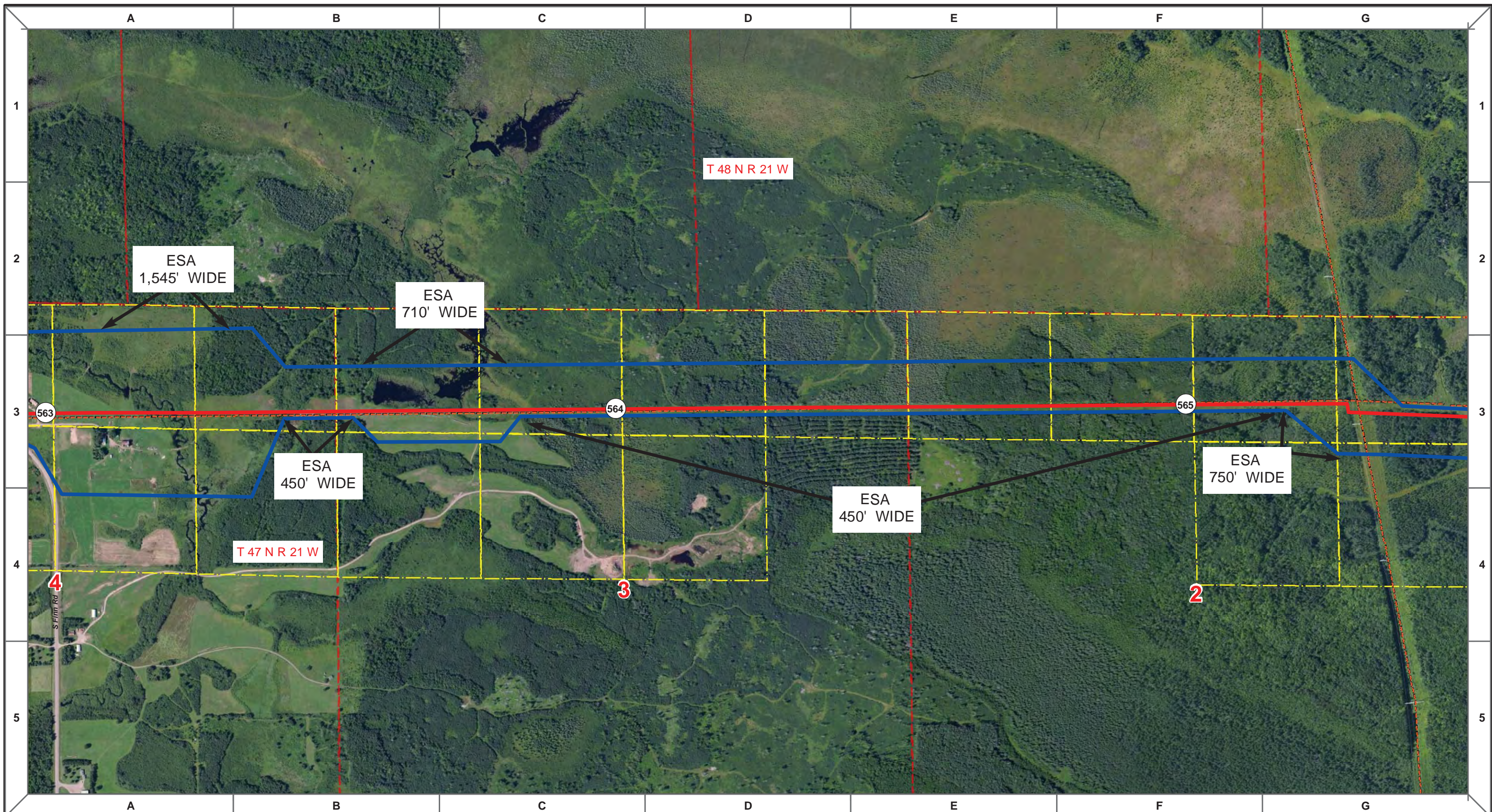
**ENBRIDGE PIPELINES (NORTH DAKOTA) LLC**

**PROPOSED SANDPIPER PIPELINE PROJECT  
ROUTE MAP  
Carlton County, MN**

|                    |                 |
|--------------------|-----------------|
| DRAWN: MLB         | CHECKED: --     |
| DATE: Oct 18, 2013 | SCALE: AS SHOWN |

Spread:8 Map: 108 of 128





|                               |                                 |                                    |
|-------------------------------|---------------------------------|------------------------------------|
| Proposed Pipeline - Sandpiper | Milepost - Sandpiper            | Tract Boundary                     |
| Existing Enbridge Pipelines   | Potential Block Valve           | Facility Boundary                  |
| Foreign Pipes                 | Environmental Survey Area (ESA) | Previously Sited Facility Boundary |
| Transmission Lines            |                                 | Section Lines                      |
| SPREAD BREAK                  |                                 |                                    |

500 250 0 500 1,000 Feet

| DRAWN | CHECKED | APPROVED | DATE     | REV NO. | DESCRIPTION   |
|-------|---------|----------|----------|---------|---------------|
| MLB   |         |          | 10/10/13 | 0       | PUC Submittal |
|       |         |          |          |         |               |
|       |         |          |          |         |               |
|       |         |          |          |         |               |
|       |         |          |          |         |               |
|       |         |          |          |         |               |

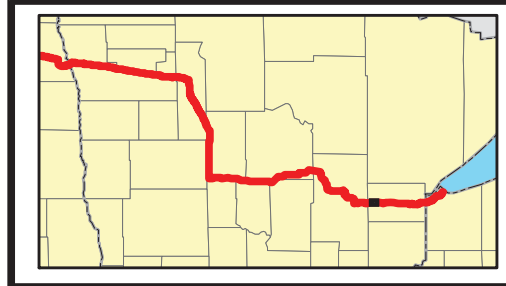
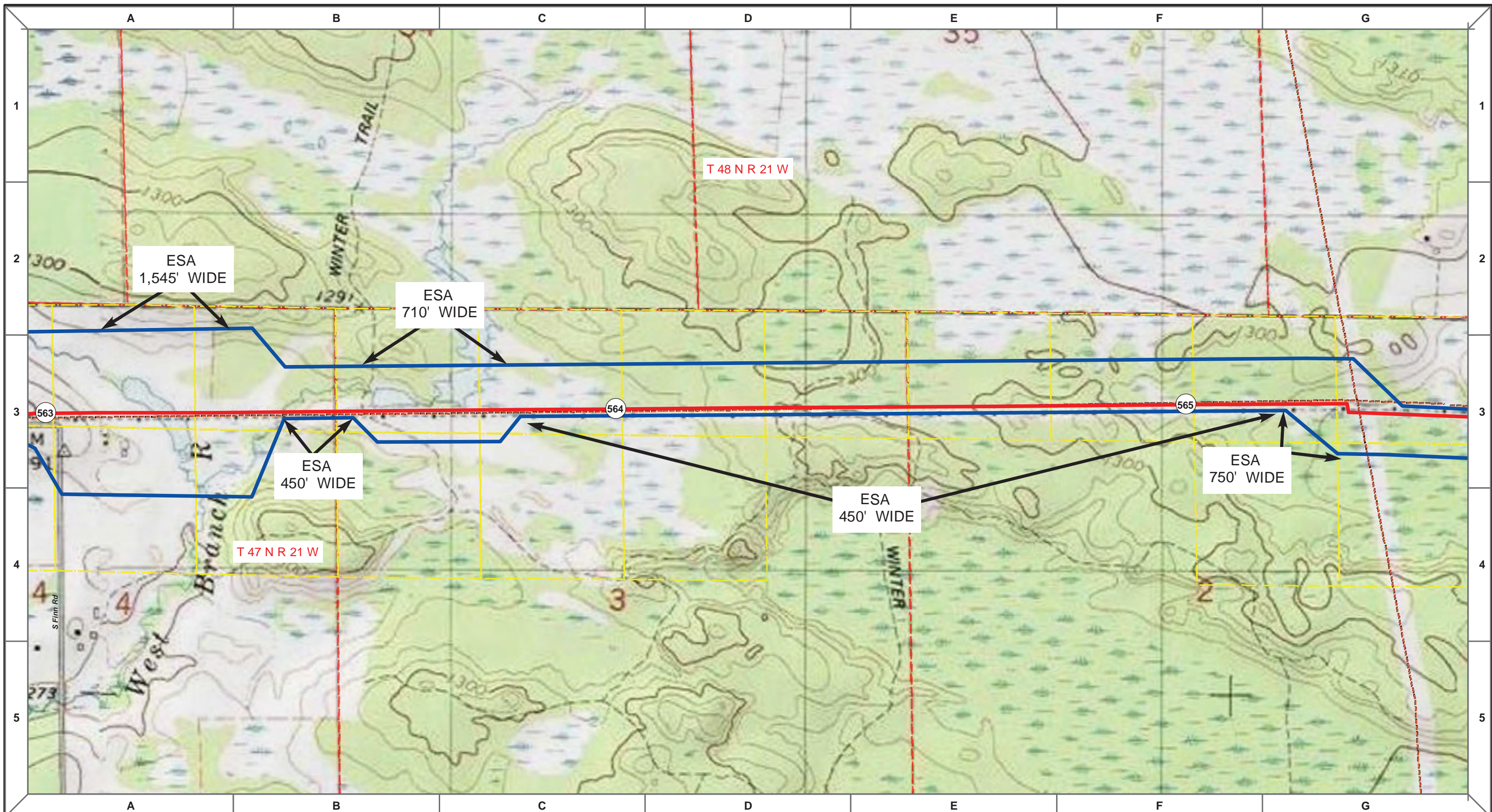
**ENBRIDGE PIPELINES (NORTH DAKOTA) LLC**

**PROPOSED SANDPIPER  
PIPELINE PROJECT  
ROUTE MAP  
Carlton County, MN**

|                                   |                                |
|-----------------------------------|--------------------------------|
| <small>DRAWN:</small> MLB         | <small>CHECKED:</small> --     |
| <small>DATE:</small> Oct 18, 2013 | <small>SCALE:</small> AS SHOWN |

Spread:8 Map: 109 of 128





|                                 |                                    |                   |
|---------------------------------|------------------------------------|-------------------|
| Proposed Pipeline - Sandpiper   | Existing Enbridge Pipelines        | Tract Boundary    |
| Foreign Pipes                   | Transmission Lines                 | SPREAD BREAK      |
| Milepost - Sandpiper            | Potential Block Valve              | Facility Boundary |
| Environmental Survey Area (ESA) | Previously Sited Facility Boundary | Section Lines     |

500 250 0 500 1,000 Feet

| MLB | DATE     | REV NO. | DESCRIPTION   |
|-----|----------|---------|---------------|
|     | 10/10/13 | 0       | PUC Submittal |
|     |          |         |               |
|     |          |         |               |
|     |          |         |               |
|     |          |         |               |
|     |          |         |               |
|     |          |         |               |
|     |          |         |               |
|     |          |         |               |
|     |          |         |               |

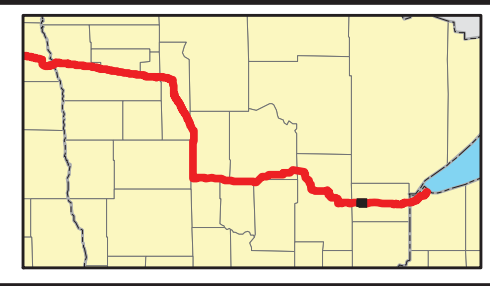
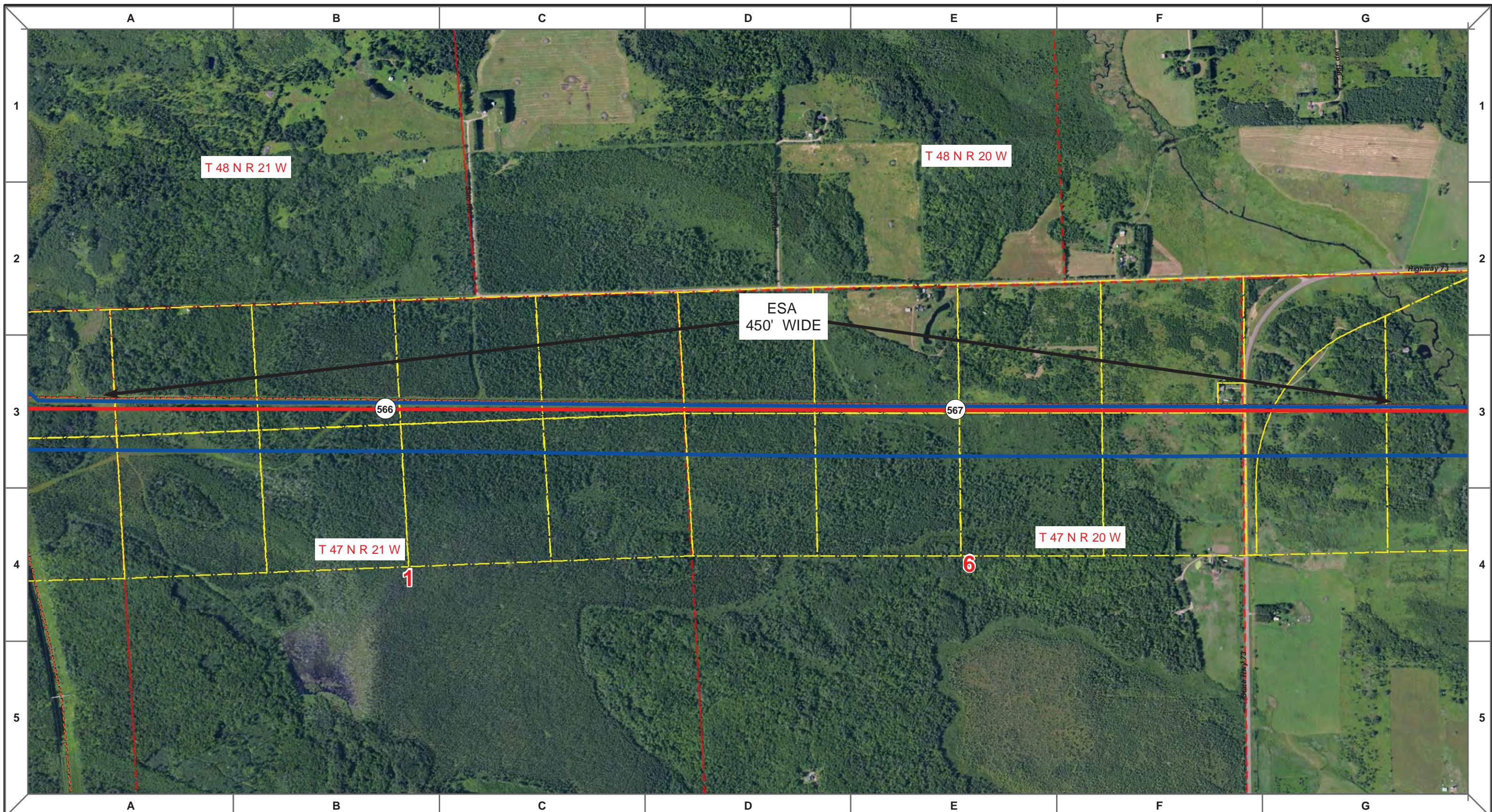
**ENBRIDGE PIPELINES (NORTH DAKOTA) LLC**

**PROPOSED SANDPIPER PIPELINE PROJECT  
ROUTE MAP  
Carlton County, MN**

|                           |                        |
|---------------------------|------------------------|
| DRAWN: <b>MLB</b>         | CHECKED: <b>--</b>     |
| DATE: <b>Oct 18, 2013</b> | SCALE: <b>AS SHOWN</b> |

Spread:8 Map: 109 of 128





|                               |                                 |                                    |
|-------------------------------|---------------------------------|------------------------------------|
| Proposed Pipeline - Sandpiper | Milepost - Sandpiper            | Tract Boundary                     |
| Existing Enbridge Pipelines   | Potential Block Valve           | Facility Boundary                  |
| Foreign Pipes                 | Environmental Survey Area (ESA) | Previously Sited Facility Boundary |
| Transmission Lines            |                                 | Section Lines                      |
| SPREAD BREAK                  |                                 |                                    |

500 250 0 500 1,000 Feet

| DRAWN | CHECKED | APPROVED | DATE     | REV NO. | DESCRIPTION   |
|-------|---------|----------|----------|---------|---------------|
| MLB   |         |          | 10/10/13 | 0       | PUC Submittal |
|       |         |          |          |         |               |
|       |         |          |          |         |               |
|       |         |          |          |         |               |
|       |         |          |          |         |               |

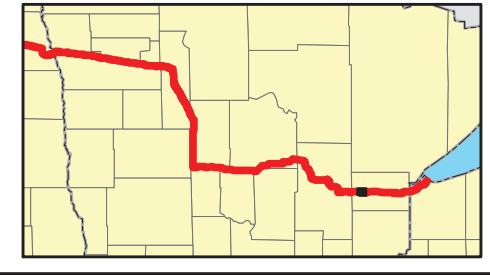
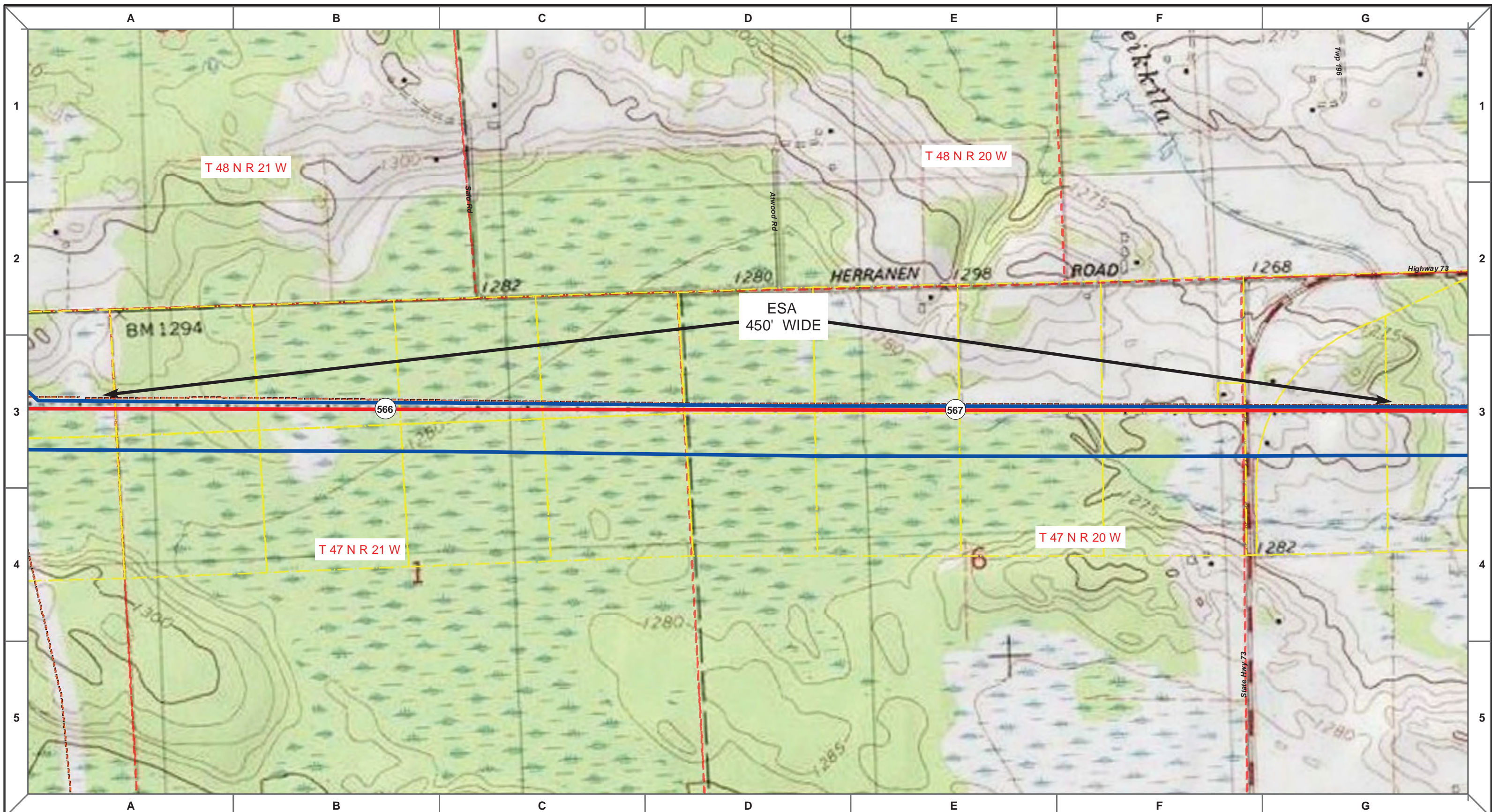
**ENBRIDGE PIPELINES (NORTH DAKOTA) LLC**

**PROPOSED SANDPIPER PIPELINE PROJECT**  
**ROUTE MAP**  
 Carlton County, MN

|                                   |                                |
|-----------------------------------|--------------------------------|
| <small>DRAWN:</small> MLB         | <small>CHECKED:</small> --     |
| <small>DATE:</small> Oct 18, 2013 | <small>SCALE:</small> AS SHOWN |

Spread:8
Map: 110 of 128





|                               |                                 |                                    |
|-------------------------------|---------------------------------|------------------------------------|
| Proposed Pipeline - Sandpiper | Milepost - Sandpiper            | Tract Boundary                     |
| Existing Enbridge Pipelines   | Potential Block Valve           | Facility Boundary                  |
| Foreign Pipes                 | Environmental Survey Area (ESA) | Previously Sited Facility Boundary |
| Transmission Lines            |                                 | Section Lines                      |
| SPREAD BREAK                  |                                 |                                    |

500 250 0 500 1,000 Feet

|         |             |          |               |
|---------|-------------|----------|---------------|
| MLB     | 10/10/13    | 0        | PUC Submittal |
| DRAWN   | CHECKED     | APPROVED | DATE          |
| REV NO. | DESCRIPTION |          |               |

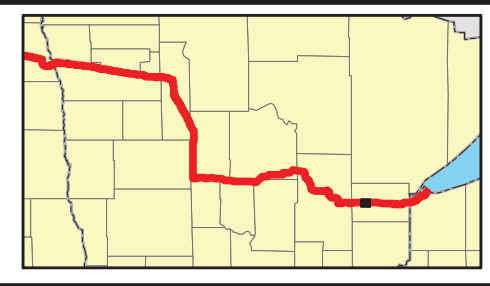
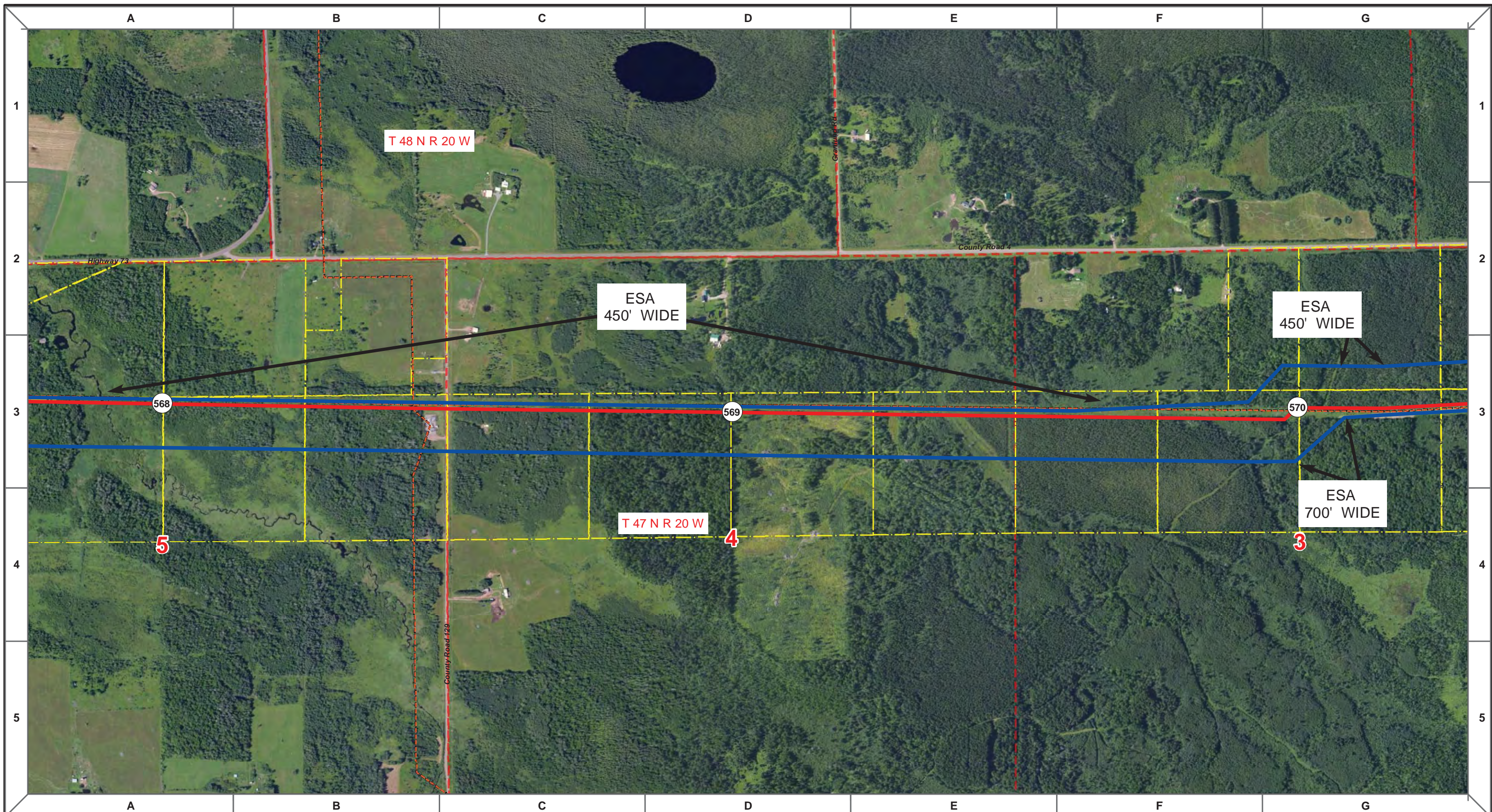
**ENBRIDGE PIPELINES (NORTH DAKOTA) LLC**

**PROPOSED SANDPIPER PIPELINE PROJECT  
ROUTE MAP  
Carlton County, MN**

|                    |                 |
|--------------------|-----------------|
| DRAWN: MLB         | CHECKED: --     |
| DATE: Oct 18, 2013 | SCALE: AS SHOWN |

Spread:8 Map: 110 of 128





|  |                               |  |                                 |  |                                    |
|--|-------------------------------|--|---------------------------------|--|------------------------------------|
|  | Proposed Pipeline - Sandpiper |  | Milepost - Sandpiper            |  | Tract Boundary                     |
|  | Existing Enbridge Pipelines   |  | Potential Block Valve           |  | Facility Boundary                  |
|  | Foreign Pipes                 |  | Environmental Survey Area (ESA) |  | Previously Sited Facility Boundary |
|  | Transmission Lines            |  |                                 |  | Section Lines                      |
|  | SPREAD BREAK                  |  |                                 |  |                                    |

500 250 0 500 1,000 Feet

|       |         |          |      |         |               |
|-------|---------|----------|------|---------|---------------|
| MLB   |         | 10/10/13 | 0    |         |               |
| DRAWN | CHECKED | APPROVED | DATE | REV NO. | DESCRIPTION   |
|       |         |          |      |         | PUC Submittal |

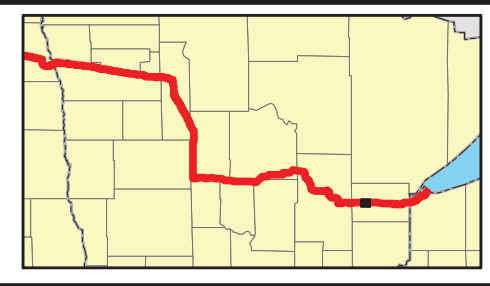
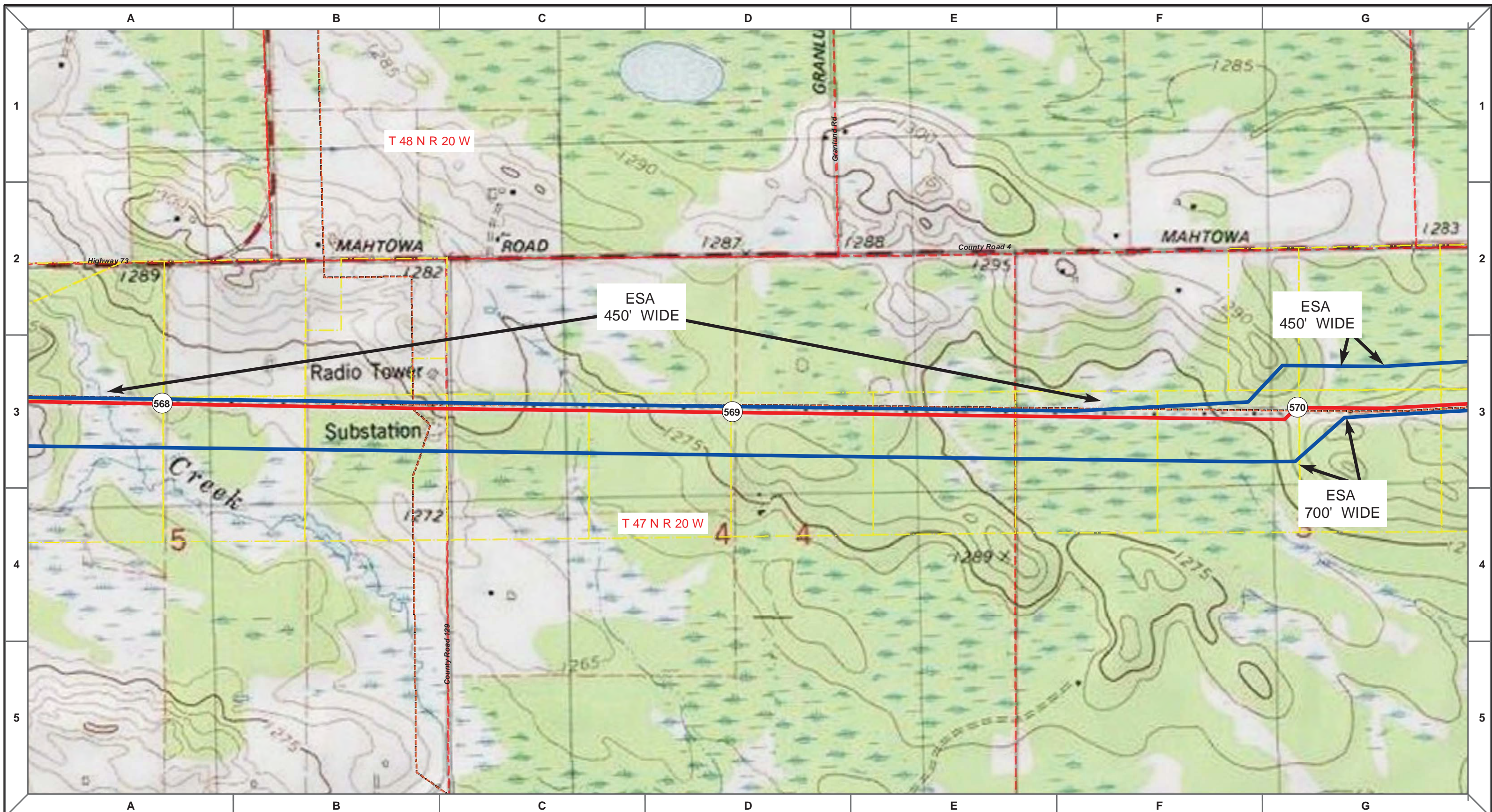
**ENBRIDGE PIPELINES (NORTH DAKOTA) LLC**

**PROPOSED SANDPIPER PIPELINE PROJECT  
ROUTE MAP  
Carlton County, MN**

|                           |                        |
|---------------------------|------------------------|
| DRAWN: <b>MLB</b>         | CHECKED: <b>--</b>     |
| DATE: <b>Oct 18, 2013</b> | SCALE: <b>AS SHOWN</b> |

Spread:8 Map: 111 of 128





|                               |                                 |                                    |
|-------------------------------|---------------------------------|------------------------------------|
| Proposed Pipeline - Sandpiper | Milepost - Sandpiper            | Tract Boundary                     |
| Existing Enbridge Pipelines   | Potential Block Valve           | Facility Boundary                  |
| Foreign Pipes                 | Environmental Survey Area (ESA) | Previously Sited Facility Boundary |
| Transmission Lines            |                                 | Section Lines                      |
| SPREAD BREAK                  |                                 |                                    |

|       |          |          |               |
|-------|----------|----------|---------------|
| MLB   | 10/10/13 | 0        | PUC Submittal |
| DRAWN | CHECKED  | APPROVED | DATE          |
|       |          |          | REV NO.       |
|       |          |          | DESCRIPTION   |

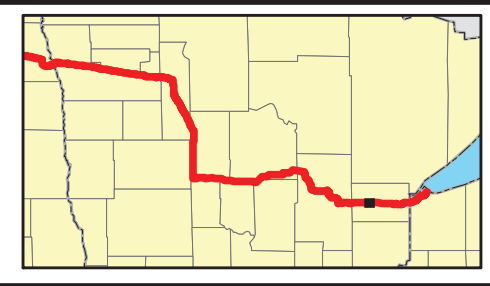
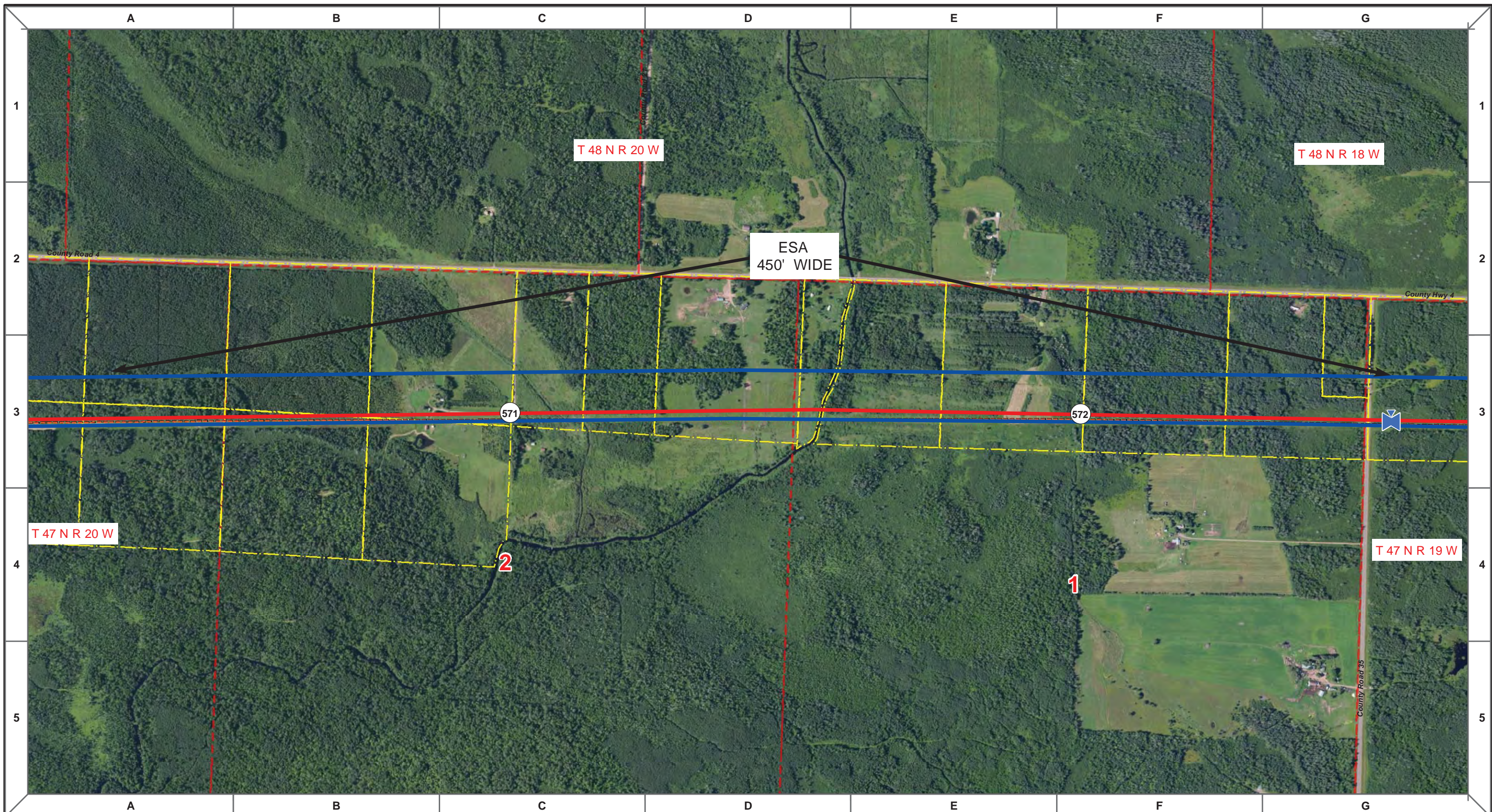
**ENBRIDGE PIPELINES (NORTH DAKOTA) LLC**

**PROPOSED SANDPIPER  
PIPELINE PROJECT  
ROUTE MAP  
Carlton County, MN**

|                    |                 |
|--------------------|-----------------|
| DRAWN: MLB         | CHECKED: --     |
| DATE: Oct 18, 2013 | SCALE: AS SHOWN |

Spread:8 Map: 111 of 128





|                               |                                 |                                    |
|-------------------------------|---------------------------------|------------------------------------|
| Proposed Pipeline - Sandpiper | Milepost - Sandpiper            | Tract Boundary                     |
| Existing Enbridge Pipelines   | Potential Block Valve           | Facility Boundary                  |
| Foreign Pipes                 | Environmental Survey Area (ESA) | Previously Sited Facility Boundary |
| Transmission Lines            |                                 | Section Lines                      |
| SPREAD BREAK                  |                                 |                                    |

500 250 0 500 1,000 Feet

| DRAWN | CHECKED | APPROVED | DATE     | REV NO. | DESCRIPTION   |
|-------|---------|----------|----------|---------|---------------|
| MLB   |         |          | 10/10/13 | 0       | PUC Submittal |
|       |         |          |          |         |               |
|       |         |          |          |         |               |
|       |         |          |          |         |               |
|       |         |          |          |         |               |

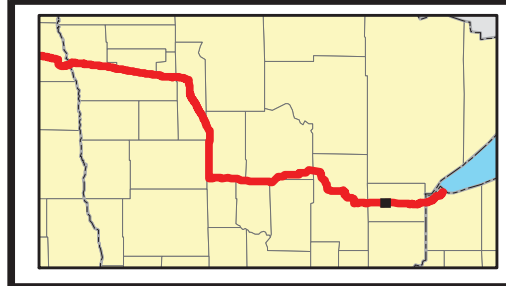
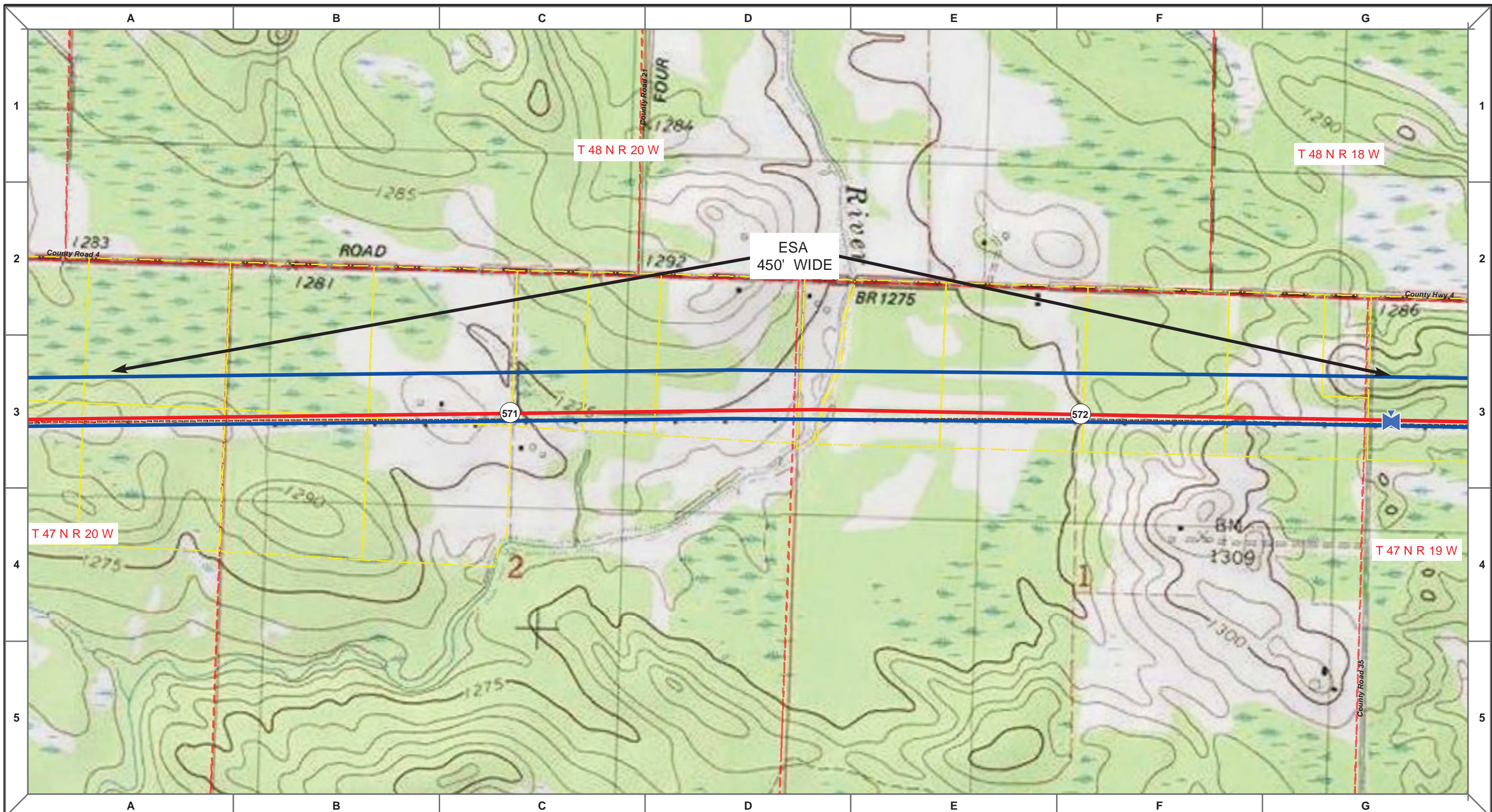
**ENBRIDGE PIPELINES (NORTH DAKOTA) LLC**

**PROPOSED SANDPIPER PIPELINE PROJECT  
ROUTE MAP  
Carlton County, MN**

|                                   |                                |
|-----------------------------------|--------------------------------|
| <small>DRAWN:</small> MLB         | <small>CHECKED:</small> --     |
| <small>DATE:</small> Oct 18, 2013 | <small>SCALE:</small> AS SHOWN |

Spread:8 Map: 112 of 128





|                               |                                 |                                    |
|-------------------------------|---------------------------------|------------------------------------|
| Proposed Pipeline - Sandpiper | Milepost - Sandpiper            | Tract Boundary                     |
| Existing Enbridge Pipelines   | Potential Block Valve           | Facility Boundary                  |
| Foreign Pipes                 | Environmental Survey Area (ESA) | Previously Sited Facility Boundary |
| Transmission Lines            |                                 | Section Lines                      |
| SPREAD BREAK                  |                                 |                                    |

| MLB | DATE     | REV NO. | DESCRIPTION   |
|-----|----------|---------|---------------|
|     | 10/10/13 | 0       | PUC Submittal |
|     |          |         |               |
|     |          |         |               |
|     |          |         |               |
|     |          |         |               |
|     |          |         |               |
|     |          |         |               |
|     |          |         |               |
|     |          |         |               |

**ENBRIDGE PIPELINES (NORTH DAKOTA) LLC**

**PROPOSED SANDPIPER PIPELINE PROJECT  
ROUTE MAP  
Carlton County, MN**

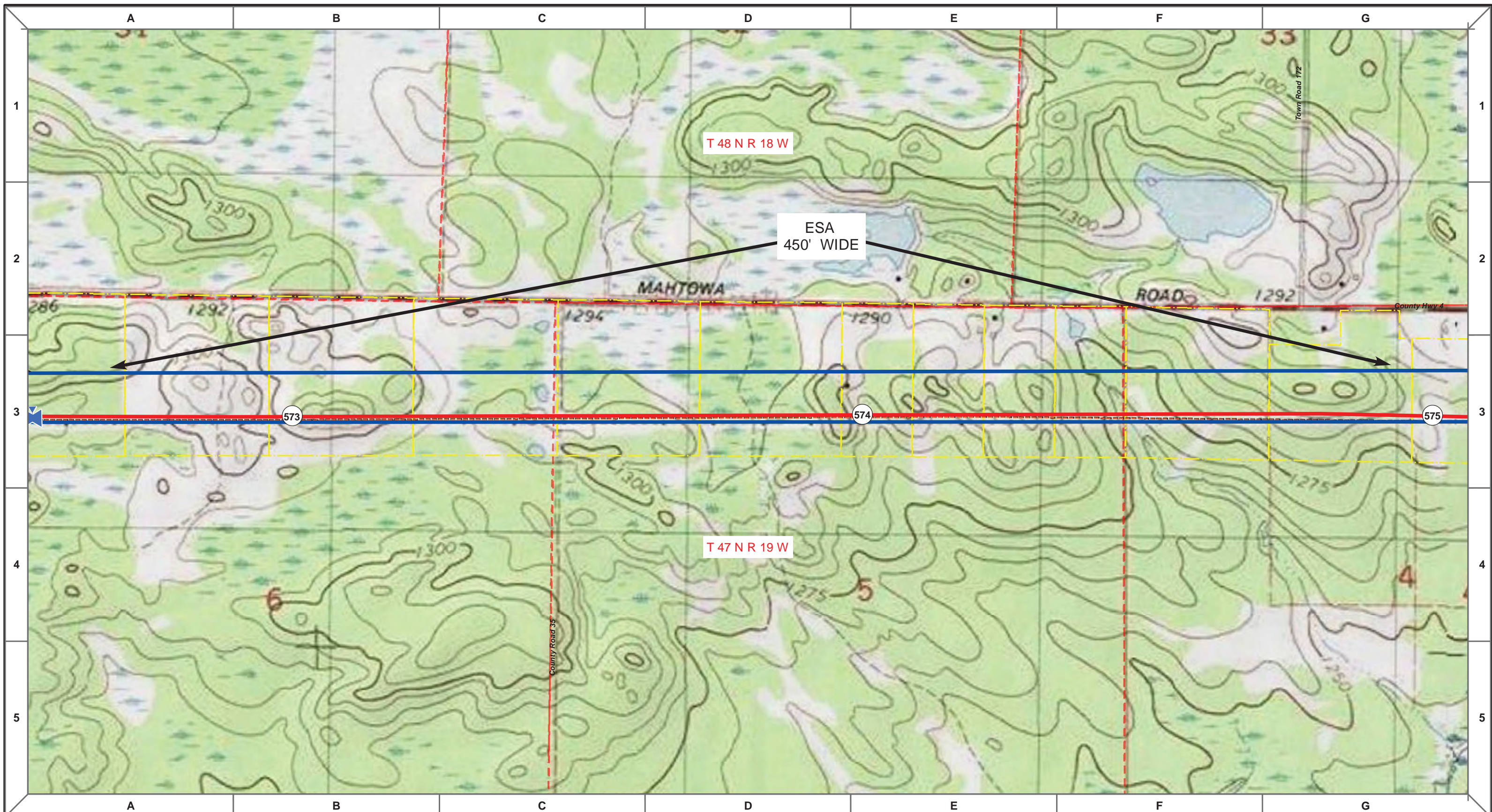
|                           |                        |
|---------------------------|------------------------|
| DRAWN: <b>MLB</b>         | CHECKED: <b>--</b>     |
| DATE: <b>Oct 18, 2013</b> | SCALE: <b>AS SHOWN</b> |

Spread:8 Map: 112 of 128





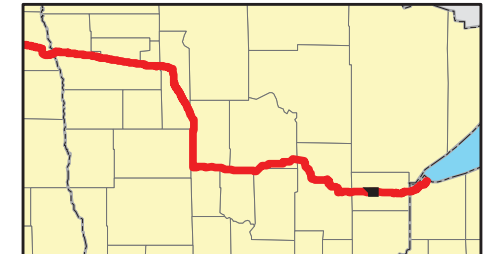




T 48 N R 18 W

ESA  
450' WIDE

T 47 N R 19 W



- Proposed Pipeline - Sandpiper
- Existing Enbridge Pipelines
- Foreign Pipes
- Transmission Lines
- SPREAD BREAK
- Milepost - Sandpiper
- Potential Block Valve
- Environmental Survey Area (ESA)
- Tract Boundary
- Facility Boundary
- Previously Sited Facility Boundary
- Section Lines



| MLB | CHECKED | APPROVED | DATE     | REV NO. | DESCRIPTION   |
|-----|---------|----------|----------|---------|---------------|
|     |         |          | 10/10/13 | 0       | PUC Submittal |
|     |         |          |          |         |               |
|     |         |          |          |         |               |
|     |         |          |          |         |               |
|     |         |          |          |         |               |

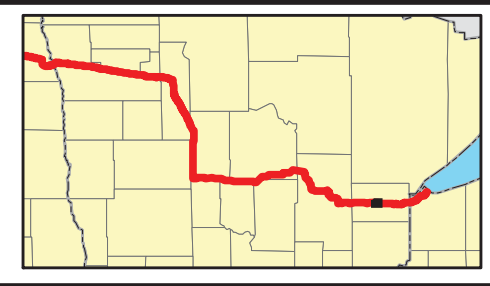
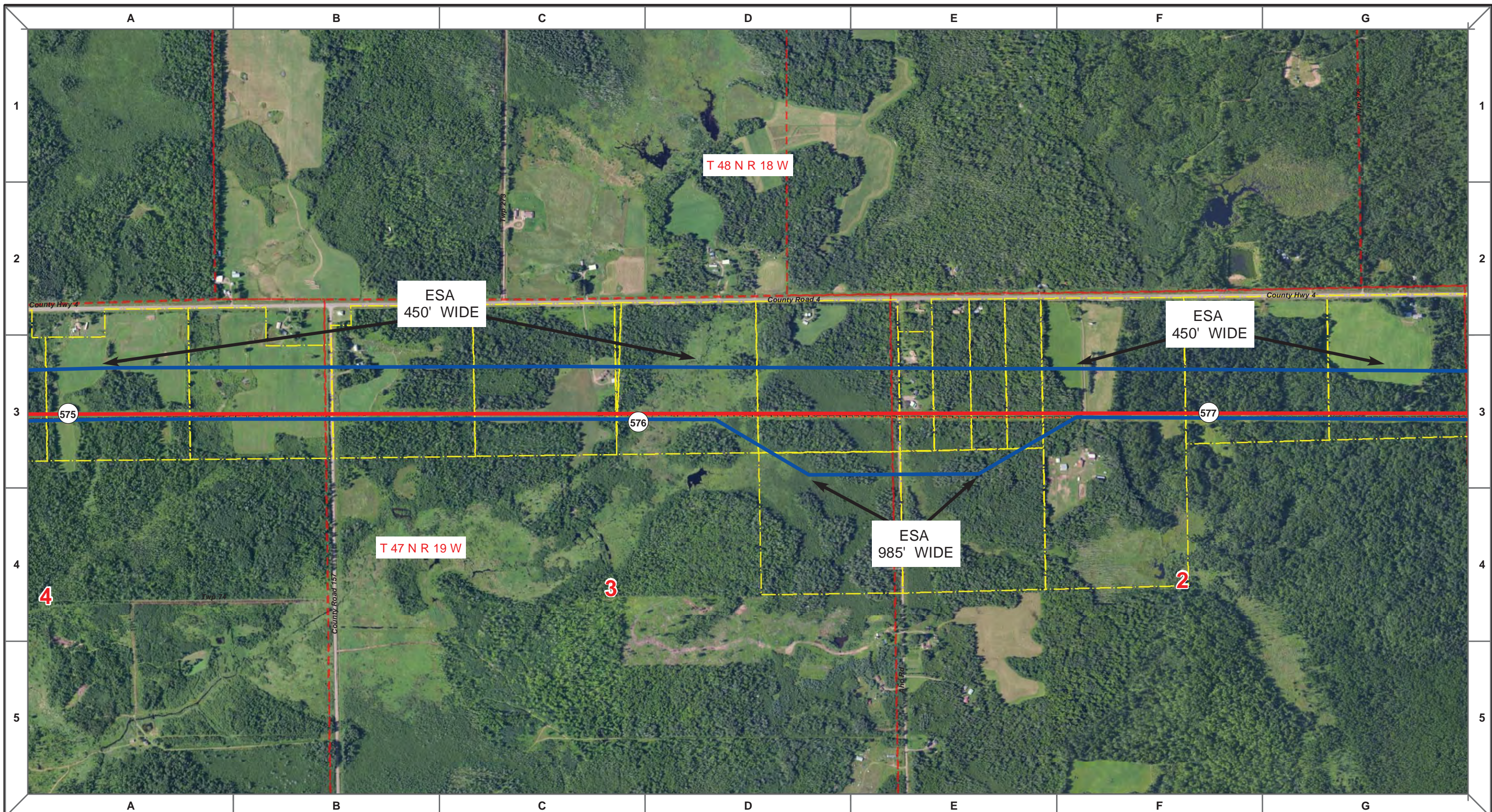
**ENBRIDGE PIPELINES (NORTH DAKOTA) LLC**

**PROPOSED SANDPIPER PIPELINE PROJECT  
ROUTE MAP  
Carlton County, MN**

|                    |                 |
|--------------------|-----------------|
| DRAWN: MLB         | CHECKED: --     |
| DATE: Oct 18, 2013 | SCALE: AS SHOWN |

Spread:8 Map: 113 of 128





|                               |                                 |                                    |
|-------------------------------|---------------------------------|------------------------------------|
| Proposed Pipeline - Sandpiper | Milepost - Sandpiper            | Tract Boundary                     |
| Existing Enbridge Pipelines   | Potential Block Valve           | Facility Boundary                  |
| Foreign Pipes                 | Environmental Survey Area (ESA) | Previously Sited Facility Boundary |
| Transmission Lines            |                                 | Section Lines                      |
| SPREAD BREAK                  |                                 |                                    |

500 250 0 500 1,000 Feet

| MLB | DATE     | REV NO. | DESCRIPTION   |
|-----|----------|---------|---------------|
|     | 10/10/13 | 0       | PUC Submittal |
|     |          |         |               |
|     |          |         |               |
|     |          |         |               |
|     |          |         |               |
|     |          |         |               |
|     |          |         |               |
|     |          |         |               |
|     |          |         |               |

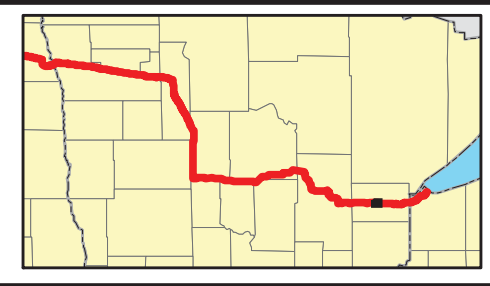
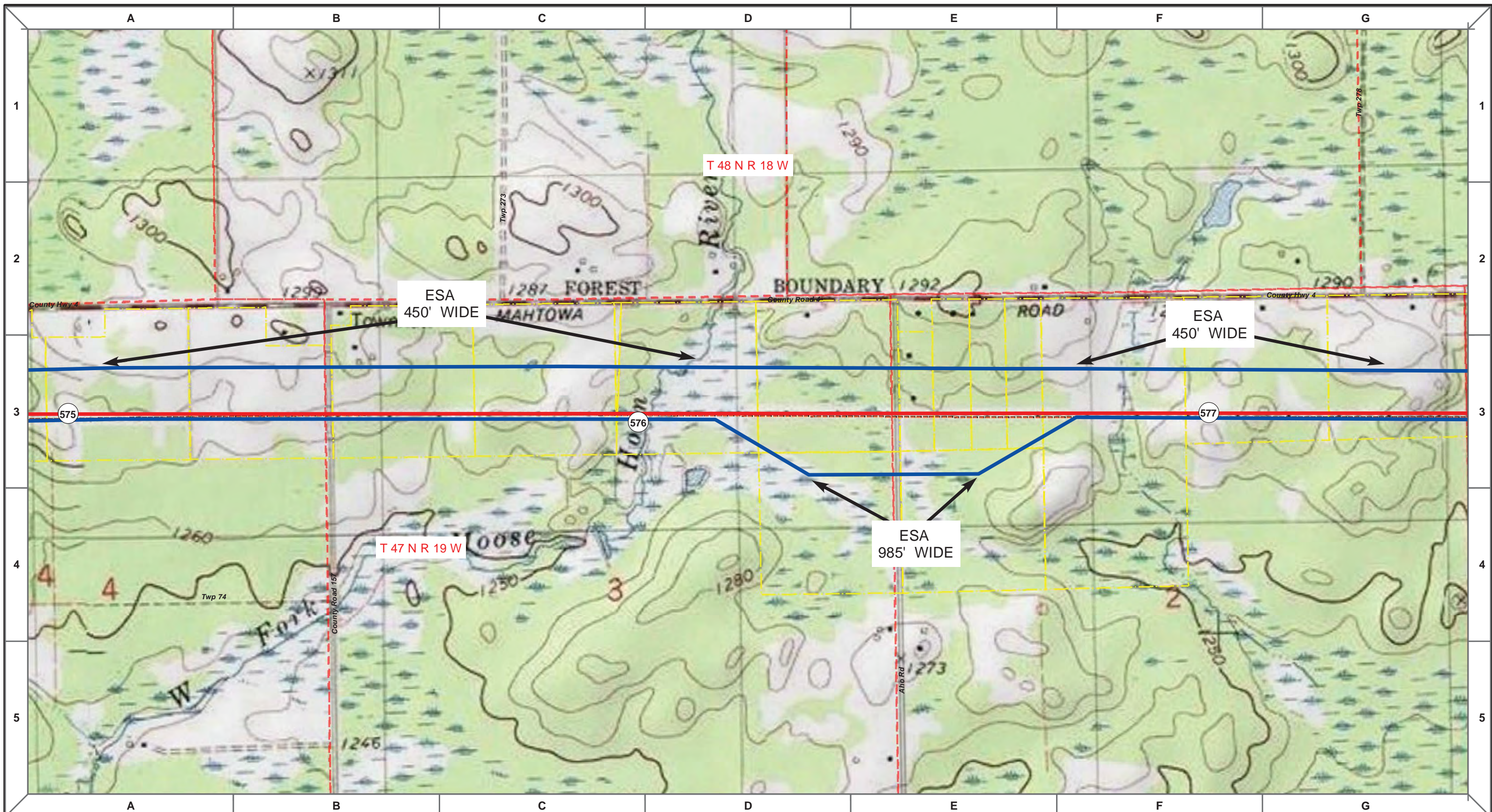
**ENBRIDGE PIPELINES (NORTH DAKOTA) LLC**

**PROPOSED SANDPIPER  
PIPELINE PROJECT  
ROUTE MAP  
Carlton County, MN**

|                           |                        |
|---------------------------|------------------------|
| DRAWN: <b>MLB</b>         | CHECKED: <b>--</b>     |
| DATE: <b>Oct 18, 2013</b> | SCALE: <b>AS SHOWN</b> |

Spread:8 Map: 114 of 128





|                               |                                 |                                    |
|-------------------------------|---------------------------------|------------------------------------|
| Proposed Pipeline - Sandpiper | Milepost - Sandpiper            | Tract Boundary                     |
| Existing Enbridge Pipelines   | Potential Block Valve           | Facility Boundary                  |
| Foreign Pipes                 | Environmental Survey Area (ESA) | Previously Sited Facility Boundary |
| Transmission Lines            |                                 | Section Lines                      |
| SPREAD BREAK                  |                                 |                                    |

500 250 0 500 1,000 Feet

|       |         |          |      |         |               |
|-------|---------|----------|------|---------|---------------|
| MLB   |         | 10/10/13 | 0    |         |               |
| DRAWN | CHECKED | APPROVED | DATE | REV NO. | DESCRIPTION   |
|       |         |          |      |         | PUC Submittal |

**ENBRIDGE PIPELINES (NORTH DAKOTA) LLC**

**PROPOSED SANDPIPER PIPELINE PROJECT  
ROUTE MAP  
Carlton County, MN**

|                                   |                                |
|-----------------------------------|--------------------------------|
| <small>DRAWN:</small> MLB         | <small>CHECKED:</small> --     |
| <small>DATE:</small> Oct 18, 2013 | <small>SCALE:</small> AS SHOWN |

Spread:8Map: 114 of 128