



GREAT RIVER  
ENERGY<sup>SM</sup>

---

12300 Elm Creek Blvd • Maple Grove, Minnesota 55369-4718 • 763-445-5000 • Fax 763-445-5050

October 1, 2014

**VIA ELECTRONIC FILING**

Dr. Burl W. Haar  
Executive Secretary  
Minnesota Public Utilities Commission  
121 7<sup>th</sup> Place East, Suite 350  
St. Paul, MN 55101

RE: Notice Plan Petition for the Application of Great River Energy and Minnesota Power for a Certificate of Need for the Motley Area 115 kV Transmission Project in Morrison, Cass and Todd Counties, Minnesota  
MPUC Docket No. ET2/CN-14-

Dear Dr. Haar:

On behalf of Great River Energy and Minnesota Power, Great River Energy hereby submits this Notice Plan Petition for the Motley Area 115 kV Transmission Project for review and approval by the Minnesota Public Utilities Commission. Great River Energy and Minnesota Power intend to submit a Certificate of Need Application to construct a new (approximately 14-mile) 115 kV transmission line and to construct/modify substations in the Motley area in Morrison, Cass and Todd counties.

If you have any questions regarding this filing, please contact me at 763-445-5218.

Respectfully Submitted,

GREAT RIVER ENERGY

Donna L. Stephenson  
Associate General Counsel

Enclosure

cc: The Department of Commerce, Division of Energy Resources  
Office of the Attorney General, Residential and Small Business Utilities Division  
Special Service List - General List 7850.2100-1A

**STATE OF MINNESOTA  
BEFORE THE  
MINNESOTA PUBLIC UTILITIES COMMISSION**

Beverly Jones Heydinger	Chair
David C. Boyd	Commissioner
Betsy Wergin	Commissioner
Nancy Lange	Commissioner
Dan Lipschultz	Commissioner

IN THE MATTER OF THE APPLICATION OF GREAT  
RIVER ENERGY AND MINNESOTA POWER FOR A  
CERTIFICATE OF NEED FOR THE **MOTLEY AREA 115**  
**KV TRANSMISSION LINE PROJECT** IN MORRISON,  
CASS AND TODD COUNTIES, MINNESOTA

MPUC Docket No.  
ET2/E015/CN-14-\_\_\_\_

**NOTICE PLAN PETITION**

---

**Public Comments on this Notice Plan Petition can be submitted to the Minnesota  
Public Utilities Commission until 4:30 P.M. October 21, 2014.**

**Replies to Comments can be submitted to the Minnesota Public Utilities Commission  
until 4:30 P.M. November 10, 2014.**

**The Commission's address is: Minnesota Public Utilities Commission, 121 7th Place  
East, Suite 350, St Paul, MN 55101-2147**

---

## I. INTRODUCTION

Great River Energy and Minnesota Power (“Applicants”) intend to file a request for a Certificate of Need for a 115 kilovolt (“kV”) high voltage transmission line (“HVTL”) in Morrison, Cass and Todd counties named the Motley Area 115 kV Transmission Project (“Project”). The Project is primarily driven by Great River Energy’s load-serving needs, including the need to serve a proposed new Minnesota Pipe Line Company (“MPL”) pumping station; however, Minnesota Power will be a joint applicant to capture their load-serving needs in the area and modifications to their system required as a result of Great River Energy’s proposed transmission facilities.

On behalf of Applicants, Great River Energy respectfully submits this Notice Plan Petition for approval by the Minnesota Public Utilities Commission (“Commission”) pursuant to Minnesota Rule 7829.2550.<sup>1</sup>

The proposed Project will serve four primary purposes:

- Strengthen the electric transmission system in the Motley area, as the existing 34.5 kV system serving the area is becoming outdated and is reaching its maximum capacity.
- Provide electric service to the proposed new Crow Wing Power (CWP) Fish Trap Lake distribution substation which is intended to provide electric power to a new pipeline pumping station proposed by Minnesota Pipe Line Company (MPL).
- Allow CWP to convert its existing Motley 34.5 kV distribution substation to operate at 115 kV due to the close proximity of the new 115 kV line to the existing substation.
- Prepare the transmission system for a future CWP distribution substation, which CWP anticipates needing in the Shamineau Lake area (the “Shamineau Substation”). This future substation could not be adequately served by the existing 34.5 kV transmission system in this area.

---

<sup>1</sup> Minnesota Statutes Section 216B.243, subdivision 2 provides that no “large energy facility” shall be sited or constructed in Minnesota without the issuance of a Certificate of Need by the Commission. The definition of a “large energy facility” that is applicable here is “a high-voltage transmission line with a capacity of 100 kV or more with more than 10 miles of its length in Minnesota.” Minn. Stat. § 216B.2421, subd. 2(3). Minnesota Rule 7829.2550 requires a Notice Plan to be submitted for review by the Commission at least three months before filing a Certificate of Need application for any high voltage transmission line under Minnesota Statutes Section 216B.2421.

Applicants intend to submit a combined application for a Certificate of Need and a Route Permit to construct the Project. Applicants will seek permission to:

- Construct approximately 14 miles of north-south single circuit 115 kV overhead transmission line between Minnesota Power’s existing 115 kV “24” transmission line and the new CWP Fish Trap Lake distribution substation. Great River Energy proposes to install a three-way switch structure (to tap the Minnesota Power “24” line) at Cass County Road 35, approximately 1-3/4 miles north of Highway 210. Low voltage distribution and/or 34.5 kV sub-transmission circuits may be constructed on a portion of the new 115 kV structures (underbuilt) depending on the final alignment approved for the Project.
- Construct a breaker station and approximately one-half mile of 115 kV transmission line at Minnesota Power’s Dog Lake Substation.
- Convert the existing CWP Motley Substation from 34.5 kV to 115 kV.
- Construct the proposed CWP Fish Trap Lake Substation on MPL’s pumping station property in the vicinity of US Highway 10 and Holt Road.

### **Load-Serving Need**

The 34.5 kV sub-transmission system sourced from the Dog Lake 115/34.5 kV Substation and the Baxter 115/34.5 kV Substation (see **Attachment A**) is currently at risk of experiencing transmission system overloads. The potential overloads on the 34.5 kV sub-transmission system were first identified in 2008 and included in Great River Energy’s Long Range Plan. System overloads could occur if there was a contingency on the Baxter Substation 115/34.5 kV transformer. In the event of such a contingency, system operators would be required to reconfigure the system by use of switches to transfer the load normally served by the Baxter Substation to the Dog Lake Substation. If this scenario were to happen during peak loading times, the additional load would cause an overload on the Dog Lake Substation 115/34.5 kV transformer.

The proposed new MPL pumping station load, in addition to the loads currently served by the Dog Lake–Baxter area 34.5 kV system, will exceed the system’s maximum capacity. A solution is needed to either unload the system or build more capacity into the system. The most economical plan is to remove a large load from the 34.5 kV system and place it on a new higher voltage system (therefore alleviating the capacity constraint), rather than rebuilding the entire 34.5 kV system. The Project proposes to remove a large load (the Motley Substation) from the 34.5 kV system and place it on a new 115 kV circuit. Removing Motley from the 34.5 kV system alleviates the capacity constraint on the Dog Lake–Baxter system and also provides a more robust 115 kV source to the Motley Substation.

In addition to addressing the load service needs discussed above, the Project will prepare the area transmission system for additional loads in the Shamineau Lake area. The need for the

proposed new Shamineau Substation was identified in the Biennial Plan (“Plan”). The latest Plan states, however, that the substation is on hold due to a reduction in load growth. If growth rates return to historically higher levels, the existing 34.5 kV transmission system could not reliably serve the Shamineau Lake area. The proposed Project would provide the needed support. CWP has indicated that a prudent location for the Shamineau Substation would be near US Highway 10 westerly of Shamineau Lake. The Project would support such a location with minimal additional high voltage transmission line construction.

### **MPL Need**

MPL is proposing to construct six new pumping stations along its newest pipeline (Line 4) to ensure that Minnesota refineries continue to have access to reliable and sufficient crude oil supplies to meet demand for transportation fuels. MPL plans to use available capacity on Line 4 to ensure reliability of its pipeline system, which is the primary crude oil pipeline system supplying Minnesota’s two refineries. In addition to the local load-serving need discussed above, the Project is needed to provide electrical service to the proposed new CWP Fish Trap Lake distribution substation, which will serve one of these six proposed pumping stations (the Fish Trap Pumping Station), which will be located at the southern terminus of the Project.

## II. NOTICE PLAN PROPOSAL

This Notice Plan is prepared as an initial step in the Certificate of Need regulatory process. Preparation of a Notice Plan, and its review and approval by the Commission, will ensure that interested persons have the opportunity to participate in the proceeding. The area proposed to be included in notices under this proposal (“Notice Area) is depicted in **Attachment B**.

This Notice Plan includes the following proposed direct mail and publication notices:

- **Direct Mail Notice:**
  - Landowners within the Notice Area (**Attachment C**);
  - Residents with mailing addresses within the Notice Area (**Attachment C**);
  - Local units of government with constituents in the Notice Area (**Attachments D and E**);
  - Local and state elected officials with constituents in the Notice Area (**Attachments D and F**); and
  - State and local government agencies and offices with jurisdiction in the Notice Area (**Attachments G and H**).
  
- **Published Notice (Attachment I and J)** in local and regional newspapers with circulation within the Notice Area.

### A. Direct Mail Notice to Landowners

Minnesota Rule 7829.2550, Subpart 3(A), requires an applicant for a Certificate of Need to provide direct mail notice to all landowners likely to be affected by the proposed transmission lines. Great River Energy will obtain landowner names and addresses within the Notice Area using County GIS data, which includes tax record information. A draft of the letter proposed to be used for the direct mail notice requirement for landowners in the Notice Area is included as **Attachment C**.

### B. Direct Mail Notice to Mailing Addresses

Minnesota Rule 7829.2550, Subpart 3(B), requires an applicant for a Certificate of Need to provide direct mail notice to all mailing addresses in the area that are likely to be affected by the proposed transmission lines. Great River Energy will rely on County GIS data (that includes the tax owner and property address) to create a list of mailing addresses within the Notice Area for the Project. A draft of the letter that Great River Energy proposes to use for the direct mail notice to residents in the Notice Area is included as **Attachment C**.

**C. Direct Mail Notice to Tribal Government Officials**

Minnesota Rule 7829.2550, Subpart 3(C) requires an applicant for a Certificate of Need for a high voltage transmission line to provide direct mail notice to tribal governments whose jurisdictions are reasonably likely to be affected by the proposed Project. There are no tribal lands within the Notice Area.

**D. Direct Mail Notice to Local Governments**

Minnesota Rule 7829.2550, Subpart 3(C), requires an applicant to provide direct mail notice to governments of towns, cities, home rule charter cities, and counties whose jurisdictions are reasonably likely to be affected by the proposed transmission lines. Great River Energy proposes to provide direct mail notice (**Attachment D**) to the towns, cities and counties listed in **Attachment E**. The notice will also be provided to the elected officials of those local units of government identified in Attachment D and to those State Senators and Representatives whose districts are within the Notice Area as identified in **Attachment F**. Additionally, the notice provided in **Attachment G** will be provided to the federal, state and local government agencies and offices identified in **Attachment G and H**.

**E. Newspaper Notice**

Minnesota Rule 7829.2550, Subpart 3(D), requires an applicant to publish notice in newspapers in the areas that may be affected by the transmission lines. The proposed notice text is provided in **Attachment I**. Great River Energy proposes to place notice advertisements in the newspapers identified in **Attachment J**.

In addition to the Notice Plan newspaper notice requirement, Minnesota Rule 7829.2500, Subpart 5, requires that after a Certificate of Need application is filed that an applicant publish newspaper notice of the filing in a newspaper of general circulation throughout the state. Given that under the proposed Notice Plan, Great River Energy will publish newspaper notice of the Certificate of Need proceeding no more than 60 days before a Certificate of Need application is filed in newspapers of local, regional and statewide circulation, Great River Energy requests a waiver from this additional newspaper notice requirement.

**F. Notice Content**

Minnesota Rule 7829.2550, Subpart 4, requires notice packets to include several pieces of information including: a map; right-of-way requirements and statement of intent to acquire property rights; notice that the transmission upgrade cannot be constructed unless the Commission certifies that it is needed; Commission contact information; utility website information; a statement that the Minnesota Department of Commerce, Energy Environmental Review and Analysis (“EERA”) will prepare an environmental report; an explanation of how to get on the Project’s mailing list; and a list of applicable regulatory laws and rules. Great River Energy’s notice mailing will include these requirements.

The notice letter will serve three purposes: 1) to introduce and explain the need and location of the proposed Project; 2) to encourage potentially-affected persons to participate in the regulatory process; and 3) to provide contact information for citizens and officials to obtain additional information about the Project and the regulatory process. The map that will be included with the notice letter will depict the transmission line endpoints and route being considered, substations, counties, townships, and notable landmarks to aid in orientation.

**G. Distribution of Notice Plan Filing**

As required under Minnesota Rule 7829.2550, Subpart 1, this Notice Plan filing has been sent to the EERA, the Residential and Small Business Utilities Division of the Office of the Attorney General, and to those parties listed on the “General List of Persons Interested in Power Plants and Transmission Lines” as maintained by the Commission in its eDocket system.

**H. Notice Timing**

Minnesota Rule 7829.2550, Subpart 6, requires the applicant to implement the Notice Plan within 30 days of its approval by the Commission. Great River Energy requests that the Commission modify the Notice Plan implementation requirement to allow notice to more closely coincide with the Certificate of Need filing. Great River Energy requests that the Commission direct the notices identified in this Notice Plan to occur no more than 60 days prior to the filing of the Certificate of Need application.

**I. Project Service List**

Pursuant to Minnesota Rule 7829.0700, Subpart 1, Great River Energy requests that the following persons be placed on the Commission’s Official Service List for this matter, and request electronic service for these persons:

<b>Utility Employee Responsible for Filing</b>	Mark Strohfus Great River Energy Environmental Project Lead 12300 Elm Creek Blvd Maple Grove, MN 55369 <a href="mailto:MStrohfus@GREnergy.com">MStrohfus@GREnergy.com</a>
--	--

<b>Utility Attorney Responsible for Filing</b>	Donna Stephenson Great River Energy Associate General Counsel 12300 Elm Creek Blvd Maple Grove, MN 55369 <a href="mailto:DStephenson@GREnergy.com">DStephenson@GREnergy.com</a>
--	--



**Attorney for  
Minnesota Power**

David Moeller  
Senior Attorney  
Minnesota Power  
30 West Superior St.  
Duluth, MN 55802  
[DMoeller@Allete.com](mailto:DMoeller@Allete.com)

### III. CONCLUSION

On behalf of Applicants, Great River Energy respectfully requests that the Commission: (1) approve this Notice Plan prepared in advance of our Certificate of Need application to construct the Motley Area 115 kV Transmission Project in Morrison, Cass and Todd counties; (2) grant the variance from duplicative newspaper notice requirements under Minnesota Rule 7829.2500, Subpart 5; and (3) grant the variance from the 30-day implementation notice contemplated in Minnesota Rule 7829.2550, Subpart 6, and modify the time for implementation of the Notice Plan to no more than 60 days and no less than two weeks prior to the filing of the Certificate of Need application.

Dated: October 1, 2014

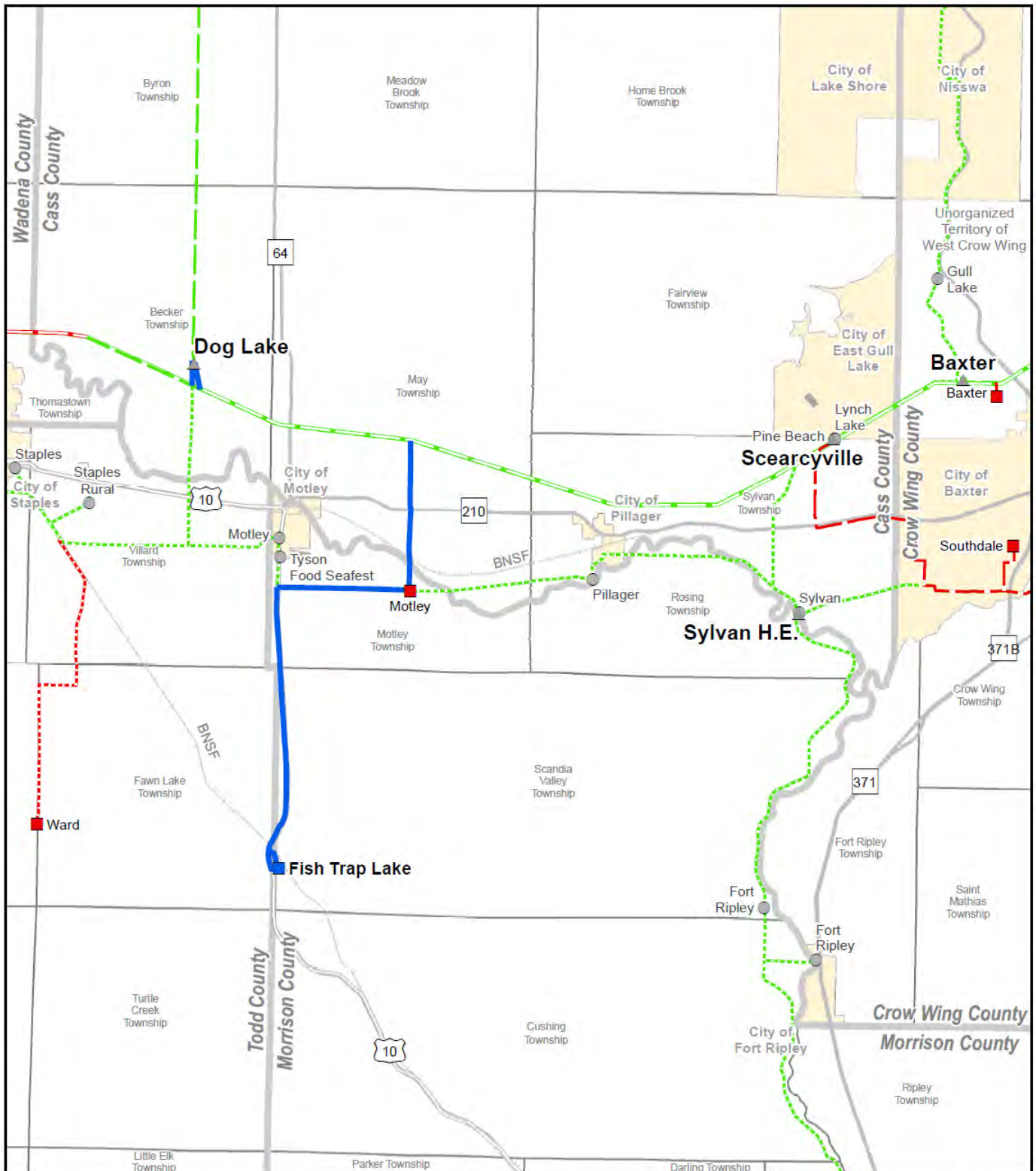
Respectfully submitted,

#### **GREAT RIVER ENERGY**

By:       /s/ Donna Stephenson        
Donna Stephenson (#0291584)  
Associate General Counsel  
12300 Elm Creek Blvd  
Maple Grove, MN 55369  
763-445-5218

#### **Attorney for Great River Energy**

S:\Transmission\Capital Projects\202987 - Motley Area 115 kV Project\202972 - Fish Trap Pumping Station 115 kV Line (20 mi)\LR-ENV\Environmental\Cert of Need\Notice Plan Petition Motley 1.doc



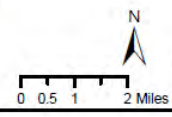
**Proposed Project**  
 — 115 kV Transmission Line  
 Existing Great River Energy  
 - - - 34.5 Transmission Line  
 - - - 115 kV Transmission Line  
 - - - 230 kV and above Transmission Line

**Proposed Cooperative**  
 ■ Distribution Substation  
**Existing Cooperative**  
 ■ Distribution Substation

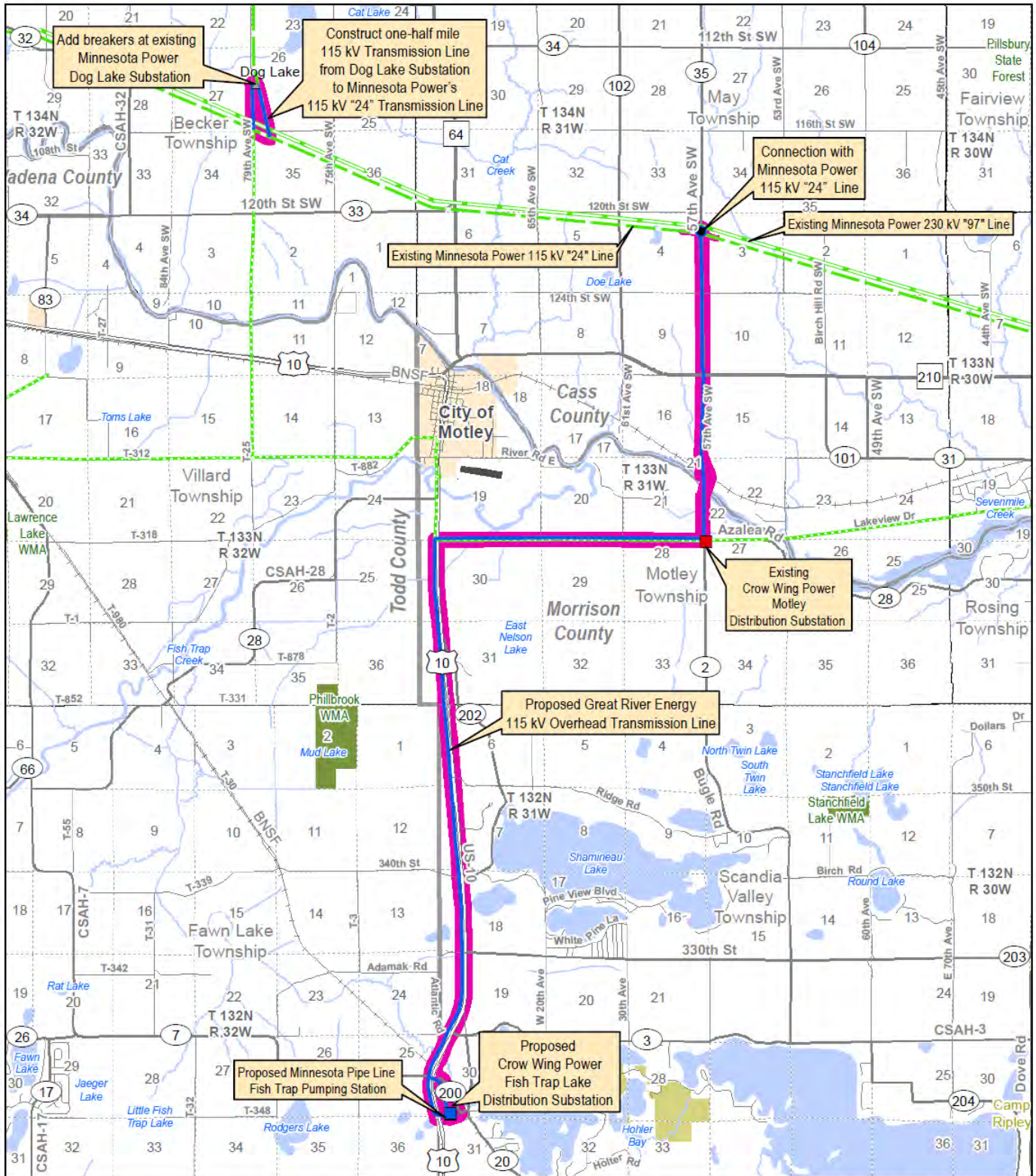
**Non-Great River Energy**  
 - - - 34.5 Transmission Line  
 - - - 115 kV Transmission Line  
 - - - 230 kV and above Transmission Line  
 ● Distribution Substation  
 ▲ Transmission Substation

**Motley Area 115 kV  
 Transmission Project  
 System Map  
 Attachment A**

GIS Data sources include:  
 MNGEO, MNDNR, MNDOT, and Great River Energy.







<p><b>Proposed Project</b></p> <ul style="list-style-type: none"> <li><span style="color: blue;">—</span> 115 kV Transmission Line</li> <li><span style="background-color: magenta; border: 1px solid black; display: inline-block; width: 15px; height: 10px;"></span> Notice Area (1,000 feet wide)</li> <li><span style="color: black;">●</span> Transmission Line Connection Point</li> <li><span style="border: 1px solid black; display: inline-block; width: 15px; height: 10px;"></span> County Boundary</li> </ul>	<p><b>Proposed Crow Wing Power</b></p> <ul style="list-style-type: none"> <li><span style="background-color: blue; border: 1px solid black; display: inline-block; width: 15px; height: 10px;"></span> Distribution Substation</li> <li><span style="background-color: magenta; border: 1px solid black; display: inline-block; width: 15px; height: 10px;"></span> Notice Area (1,000 feet wide)</li> <li><span style="color: red;">■</span> Distribution Substation</li> <li><span style="background-color: purple; border: 1px solid black; display: inline-block; width: 15px; height: 10px;"></span> Pumping Station</li> </ul>	<p><b>Existing Minnesota Power</b></p> <ul style="list-style-type: none"> <li><span style="color: black;">▲</span> Transmission Substation</li> <li><span style="color: green;">—</span> 34.5 Transmission Line</li> <li><span style="color: green;">—</span> 115 kV Transmission Line</li> <li><span style="color: green;">—</span> 230 kV Transmission Line</li> </ul>
---	--	--

**Motley Area 115 kV Transmission Project Attachment B**

**GREAT RIVER ENERGY**  
A Facebook Energy Cooperative

GIS Data sources include: MNGEO, MNDNR, MNDOT, and Great River Energy.

0 0.5 1 2 Miles

\_\_\_\_, 2014

**RE: Notice of Certificate of Need Application for Great River Energy and Minnesota Power's Motley Area 115 kV Transmission Project in Morrison, Cass and Todd Counties, Minnesota**  
**MPUC Docket No.: ET2/E015/CN-\_\_\_\_\_**

Dear Stakeholder:

You have received this letter because you own or reside at property that may be impacted by an electric transmission line project being proposed by Great River Energy and Minnesota Power. We respectfully seek your input on the planning of this project and your participation in the state of Minnesota's review and permitting process. This letter discusses the project details and the state of Minnesota's approval and permitting process.

**Project Description**

Great River Energy and Minnesota Power are proposing to construct a new 115 kV transmission line called the Motley Area 115 kV Transmission Project ("Project"). The Project is proposed to be located in Motley Township and Scandia Valley Township in Morrison County; May Township and Becker Township in Cass County; and Fawn Lake Township in Todd County, Minnesota. **Attachment 1** depicts the area under consideration for the location of the Project.

The proposed Project will serve four primary purposes:

- Strengthen the electric transmission system in the Motley area, as the existing 34.5 kV system serving the area is becoming outdated and is reaching its maximum capacity.
- Provide electric service to the proposed new Crow Wing Power (CWP) Fish Trap Lake distribution substation that would provide electric power to a new pipeline pumping station proposed by Minnesota Pipe Line Company (MPL).
- Allow CWP to convert its existing Motley 34.5 kV distribution substation to operate at 115 kV due to the close proximity of the new 115 kV line to the existing substation.
- Prepare the transmission system for a future CWP distribution substation, which CWP anticipates needing in the Shamineau Lake area. This future substation could not be adequately served by the existing 34.5 kV transmission system in this area.

Great River Energy and Minnesota Power will jointly file a combined Certificate of Need and Route Permit application with the Public Utilities Commission ("Commission") and request permission to:

- Construct approximately 14 miles of north-south single circuit 115 kV overhead transmission line between Minnesota Power's existing 115 kV "24" transmission line and the new CWP Fish Trap Lake distribution substation. Great River Energy would install a three-way switch structure (to tap the Minnesota Power "24" line) at Cass County Road 35, approximately 1-3/4 miles north of Highway 210. Low voltage distribution and/or 34.5 kV sub-transmission circuits may be constructed on a portion of the new 115 kV structures (underbuilt) depending on the final alignment approved for the Project.
- Construct a breaker station and approximately one-half mile of 115 kV transmission line at Minnesota Power's Dog Lake Substation.
- Convert the existing Crow Wing Power Motley Substation from 34.5 kV to 115 kV.
- Construct the proposed Crow Wing Power Fish Trap Lake Substation on Minnesota Pipe Line's pumping station property in the vicinity of US Highway 10 and Holt Road.

Great River Energy and Minnesota Power anticipate that a 100-foot wide right-of-way ("ROW"), 50 feet from each side of the transmission centerline, will be required for the Project. Before beginning construction, Great River Energy will acquire property rights for the ROW, typically through an easement that will be negotiated with the landowner for each parcel.

The proposed structures for the Project will primarily be single pole, wood structures approximately 60 to 90 feet above ground using spans of approximately 250 to 400 feet between poles. Additionally, specialty structures, other than the single pole wood structures discussed above, may be used through areas of environmental sensitivity or where construction conditions require their use.

As one way to identify potential Project stakeholders, Great River Energy and Minnesota Power have established a "Notice Area". The Notice Area includes all properties within the proposed route (see Attachment 1) for the transmission line, breaker station, switch and substations as well as all properties within 500 feet of either side of the proposed centerline. This notice, or similar notice, is being provided to the following:

- Landowners with property within the Notice Area;
- Residents within the Notice Area;
- Local units of government with jurisdiction in the Notice Area;
- Local and State elected officials who have constituents in the Notice Area; and
- State and local government agencies and offices with jurisdiction in the Notice Area.

### **Regulatory Process Overview**

The Commission must determine whether the Project is needed (Certificate of Need) and where the Project should be located (Route Permit). Before the Project can be constructed, the Commission must first certify that the Project is needed. Certification of the Project is governed

by Minnesota law, including Minnesota Statutes Section 216B.243, and Minnesota Rules Chapters 7829 and 7849, specifically Rules 7849.0010 to 7849.0400 and 7849.1000 to 7849.2100. In the Certificate of Need proceeding, the Commission will analyze whether Great River Energy and Minnesota Power have proposed the most appropriate size, type, and timing for the Project. The Certificate of Need application, once submitted, can be obtained by visiting the Commission's website at [www.puc.state.mn.us](http://www.puc.state.mn.us) in Docket No. ET2/E015/CN-14-\_\_\_\_.

In addition to certifying the Project, the Commission must also grant a Route Permit for the Project. Routing of the Project is governed by Minnesota law, including Minnesota Statutes Chapter 216E and Minnesota Rules Chapter 7850, specifically Rules 7850.2900 to 7850.4600, as they pertain to the alternative permitting process. Information on the Route Permit application, once filed, can be obtained by visiting the Minnesota Department of Commerce Energy Environmental Review and Analysis ("EERA") website at [mn.gov/commerce/energyfacilities/](http://mn.gov/commerce/energyfacilities/).

EERA staff is responsible for conducting environmental review of the Project. EERA staff is responsible for preparing both an environmental report ("ER") for the Certificate of Need proceeding and an environmental assessment ("EA") for the Route Permit proceeding. EERA staff may elect to combine these two documents and issue one EA document, which satisfies the environmental review requirements for the Certificate of Need and Route Permit proceedings.

Great River Energy and Minnesota Power will be submitting an application for a Route Permit and will identify a proposed route and routes that were evaluated but rejected. **Attachment 1** depicts the route Great River Energy and Minnesota Power intend to propose for the Project in their Route Permit Application. Other routes can be proposed during the EA scoping process to be completed by EERA. As part of its analysis, EERA will evaluate the route proposed by Great River Energy and Minnesota Power in its Route Permit application and any other routes proposed during the scoping process that will aid in the Commission's decision on the Route Permit application. The Commission may determine that the route submitted by Great River Energy and Minnesota Power, or a route proposed during the scoping process, or some combination of such routes is the most appropriate route for the Project. Selection of a final route by the Commission will be based on evaluation of the routes, guided by the Factors identified in Minnesota Statutes Section 216E.03, subdivision 7, Minnesota Rule 7850.4100, and stakeholder input received during the regulatory process.

### **Need for the Project**

The Motley Area 115 kV Transmission Project is needed by 2017 to address potential circuit overloads on the existing Dog Lake-Baxter 34.5 kV electric system<sup>1</sup>. System overloads can result in power outages to those homes and businesses served by the 34.5 kV electric system.

---

<sup>1</sup> The existing Motley 34.5 kV Substation receives electric energy through the Baxter Substation's 34.5 kV electric circuit or the Dog Lake Substation's 34.5 kV circuit. The potential overloads on the 34.5 kV sub-transmission system



Given the continuing risk of system overloads now coupled with the future electric demands of the proposed Minnesota Pipeline Pumping Station, Great River Energy and Minnesota Power are proposing to remove the Motley Substation's load off of the 34.5 kV system and onto the more robust 115 kV system.

Crow Wing Power has also identified the need for a future Shamineau Substation with a likely location westerly of Shamineau Lake. The load in the Shamineau Lake area could not be served by the existing 34.5 system, but it could be served by the proposed 115 kV system. The proposed route will be well suited for this location because it will allow the new substation to interconnect to the new 115 kV transmission line with minimal new 115 kV transmission line.

MPL is proposing to construct six new pumping stations along its newest pipeline (Line 4) to ensure that Minnesota refineries continue to have access to reliable and sufficient crude oil supplies to meet demand for transportation fuels. MPL plans to use available capacity on Line 4 to ensure reliability of its pipeline system, which is the primary crude oil pipeline system supplying Minnesota's two refineries. In addition to the local load-serving need discussed above, the Motley Area 115 kV Project is needed to provide electrical service to Crow Wing Power's proposed new Fish Trap Lake distribution substation, which will serve one of these six proposed pumping stations (the Fish Trap Pumping Station), which will be located at the southern terminus of the Project. MPL submitted a Certificate of Need application for the Minnesota Pipe Line Reliability Project on July 25, 2014 (MPUC Docket No. PL-5/CN-14-320).

### **Biennial Transmission Planning**

Minnesota statutes include a requirement that each electric transmission-owning utility in the state file a biennial transmission planning report with the Commission in the fall of odd years. These reports provide an excellent source of background information on the transmission planning process used by utilities in Minnesota. The 2013 Biennial Transmission Planning Report is available at: [www.minnelectrans.com](http://www.minnelectrans.com).

### **How to Stay Informed on the Project**

You can receive email notifications when information pertaining to the Certificate of Need or Route permit is filed. Alternately, you can receive information via US Mail service.

**To receive email notifications when information related to the Certificate of Need or Route Permit is filed**, subscribe to the Project docket(s) as follows:

---

were first identified in 2008 and included in Great River Energy's Long Range Plan. System overload could occur if there was a contingency on the Baxter 115/34.5 kV transformer. Upon the contingency occurrence, system operators would reconfigure the system by use of switches to use the Dog Lake transformer to pick up the load normally served by Baxter. If this scenario were to happen during peak loading times, the load picked up by Dog Lake would cause an overload on the Dog Lake 115/34.5 kV transformer.

- 1) Go to PUC web page <http://mn.gov/puc/>
- 2) Under *Get There Faster*, click *Subscribe to a Docket*
- 3) Enter your email address and select *Go*
- 4) Click the *New Subscription* button at the bottom of the table
- 5) For Type of Subscription, select *Docket No.*
- 6) Under Docket No., select *14*
- 7) In the adjacent box to the right, enter \_\_\_ for the Certificate of Need or \_\_ for the Route Permit
- 8) The description, “CON DOCKET TITLE” or “RP DOCKET TITLE” should appear in the new box.
- 9) Click the *Add to List* button below the table.
- 10) Click *Save* at the bottom of the page

To be placed on the **paper copy Project Certificate of Need mailing list**, reference Docket No. ET2/E015/CN-14-\_\_\_ in, mail, fax, or email request to Robin Benson at Minnesota Public Utilities Commission, 121 7th Place E., Suite 350, St. Paul, MN 55101-2147, Fax: 651-297-7073 or [robin.benson@state.mn.us](mailto:robin.benson@state.mn.us).

To be placed on the **paper copy Project Route Permit mailing list** (Docket No. ET2/E015/TL-14\_\_\_), register at [mn.gov/commerce/energyfacilities/](http://mn.gov/commerce/energyfacilities/), by clicking on the “Transmission Lines” tab, selecting the link for the 115 kV Transmission Line Project in the Motley Area from the listed projects, and then clicking the links next to the “Mailing List” heading. Alternately, you may contact Department of Commerce staff at the address below.

<p><b>Minnesota Public Utilities Commission</b>                  Bret Eknes                  121 7<sup>th</sup> Place East, Suite 350                  St. Paul, Minnesota 55101                  651.296.7124                  800.657.3782  <a href="mailto:bret.eknes@state.mn.us">bret.eknes@state.mn.us</a></p>	<p><b>Minnesota Department of Commerce</b>                  Deborah Pile, State Permit Manager                  85 7<sup>th</sup> Place East, Suite 500                  St. Paul, Minnesota 55101                  651.297.2375                  800.657.3794  <a href="mailto:deborah.pile@state.mn.us">deborah.pile@state.mn.us</a></p>
--	--

The Great River Energy contacts for questions about this Project are:

Mark Strohfus  
 Environmental Project Lead  
 Great River Energy  
 12300 Elm Creek Blvd  
 Maple Gove, MN 55369  
 763.445.5210  
 612.961.9820  
[MStrohfus@GREnergy.com](mailto:MStrohfus@GREnergy.com)

Rick Heuring  
 Senior Field Representative  
 Great River Energy  
 12300 Elm Creek Blvd  
 Maple Grove, MN 55369  
 763.445.5979  
 612.308.2170  
[RHeuring@GREnergy.com](mailto:RHeuring@GREnergy.com)



Lastly, Great River Energy maintains a project web page containing key milestones and information it has posted to the docket at:

[www.greatriverenergy.com/deliveringelectricity/currentprojects/projects\\_motley.html](http://www.greatriverenergy.com/deliveringelectricity/currentprojects/projects_motley.html)

Sincerely,

Mark Strohfus  
Environmental Project Lead

Enclosure: Attachment 1 – Project Fact Sheet and Route Map

# Motley Area 115 kV Transmission Project



Great River Energy  
 12300 Elm Creek Blvd  
 Maple Grove, MN 55369  
 1-888-521-0130  
[www.greatriverenergy.com](http://www.greatriverenergy.com)



Crow Wing Power  
 PO Box 507  
 Brainerd, MN 56401  
 1-800-648-9401  
[www.cwpower.com](http://www.cwpower.com)

**Project Need**

Great River Energy proposes to build and operate approximately 14 miles of new 115 kilovolt (kV) overhead transmission line in southern Cass County, eastern Todd County, and northern Morrison County to ensure the reliability of electric service to the members of Crow Wing Power (CWP). The project would:

- Strengthen the electric transmission system in the Motley area, as the existing 34.5 kV system serving the area is becoming outdated and is reaching its maximum capacity.
- Provide electric service to the proposed new CWP Fish Trap Lake distribution substation that would provide electric power to a new pipeline pumping station proposed by Minnesota Pipe Line Company (MPL).
- Allow CWP to convert its existing Motley 34.5 kV distribution substation to operate at 115 kV due to the close proximity of the new 115 kV line to the existing substation.
- Prepare the transmission system for a future CWP distribution substation, which CWP anticipates needing in the Shamineau Lake area. This future substation could not be adequately served by the existing 34.5 kV transmission system in this area.

As a component of this project, additional circuit breakers will be added to the existing Dog Lake Substation along with ½ mile of new 115 kV transmission line for system reliability.

**Project Description**

The proposed project (see back for a map of the preliminary transmission line route) would connect to the existing Minnesota Power 115 kV "24" transmission line at Cass County Road 35, approximately 1-3/4 miles north of Highway 210. At this location Great River Energy would install a three-way switch structure. From the switch structure, the new 115 kV overhead transmission line would extend southerly approximately 14 miles to serve the new CWP Fish Trap Lake distribution substation on MPL's pipeline pumping station property at U.S. Hwy. 10 and Holt Road. The new transmission line would require a 100-foot-wide right of way, 50 feet on each side of the centerline. Some segments of the transmission line would carry lower-voltage distribution lines as underbuild. In most cases, single round wood poles ranging in height from 60 - 90 feet above ground would be used (see photo at right). The typical distance between poles would range from 250 - 400 feet.



Typical 115 kV Wood Transmission Line Structure

**Permitting**

The Minnesota Public Utilities Commission (Commission) must issue a Certificate of Need (CON) and a Route Permit before the project can proceed. Great River Energy will submit a combined CON/Route Permit application containing relevant information that will help the Commission determine if there is sufficient need for the project and evaluate the proposed route and any alternative routes brought forth by the public. At the conclusion of the permitting process, the Commission will determine the final location of the proposed transmission facilities.

The public and regulatory agencies will have numerous opportunities to provide input during the CON and Route Permitting process, which is conducted and facilitated by Commission and Minnesota Department of Commerce (DOC) staff. Public meetings will be held and other opportunities will be provided for collecting comments and responses. The DOC will prepare an Environmental Assessment document for the project.

**Tree Removal**

Removal of trees and certain vegetation along the transmission line right-of-way will be necessary for safety, construction and maintenance purposes. Landowners will be contacted prior to tree removal activities.

**Project Schedule**

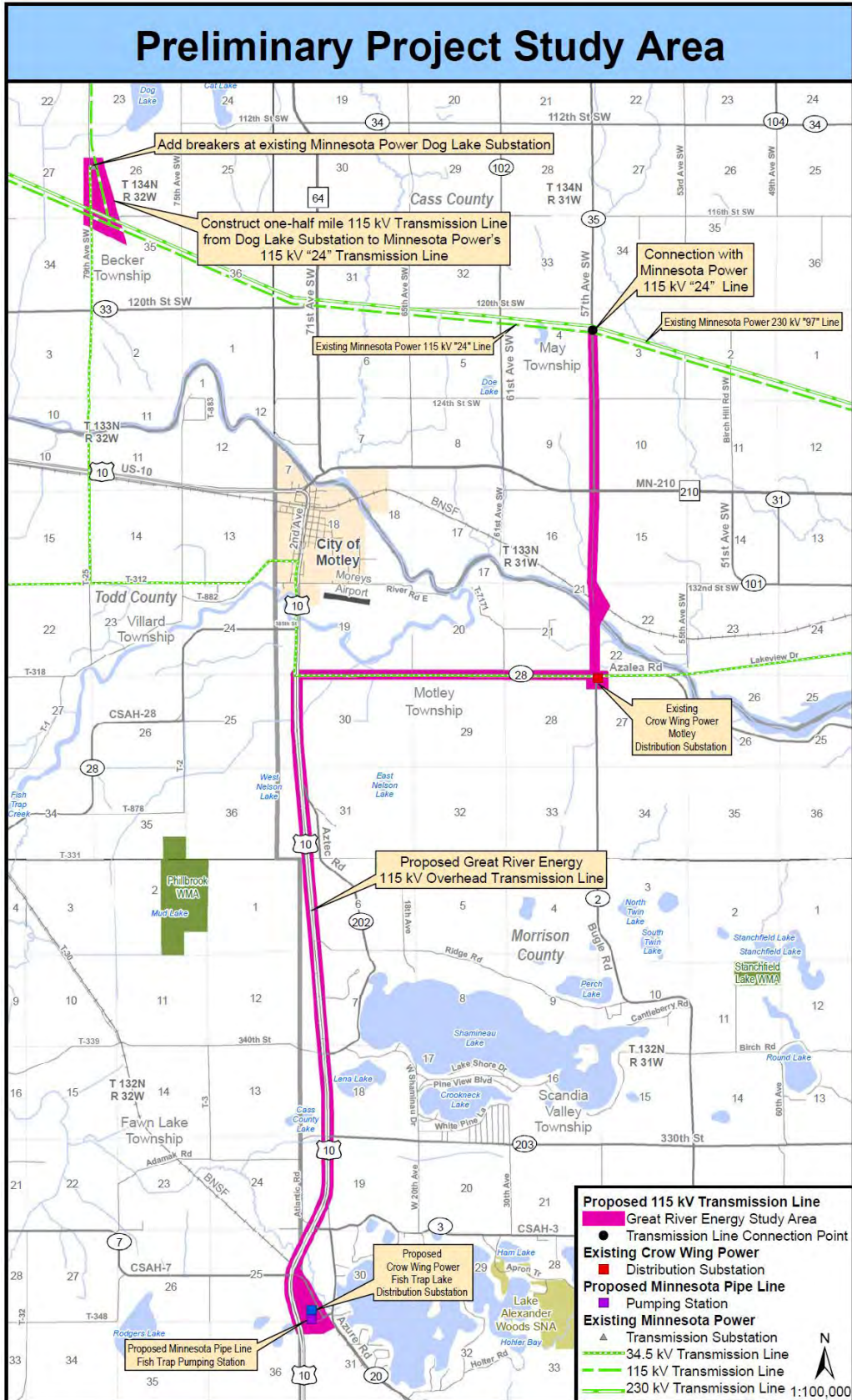
Project notification and open house -----	Fall 2014
Permitting -----	Late 2014 – late 2015
Easement acquisition -----	2016
Transmission line design -----	2016
Environmental permits -----	2016
Transmission line construction -----	2017
Energization -----	Late 2017

**For project updates and information, visit [greatriverenergy.com/Motley](http://greatriverenergy.com/Motley) or contact:**

Rick Heuring  
 Sr. Field Representative  
 Great River Energy - Land Rights Department  
 (763) 445-5979  
[rheuring@greenergy.com](mailto:rheuring@greenergy.com)

Mark Strohfus  
 Environmental Project Lead  
 Great River Energy – Environmental Services Department  
 763-445-5210  
[mstrohfus@greenergy.com](mailto:mstrohfus@greenergy.com)

Date last revised: 9/17/2014





\_\_\_\_, 2014

**RE: Notice of Certificate of Need Application for Great River Energy and Minnesota Power's Motley Area 115 kV Transmission Project in Morrison, Cass and Todd Counties, Minnesota**  
**MPUC Docket No.: ET2/E015/CN-\_\_\_\_\_**

Dear Local Government Representative or Elected Official:

You have received this letter because you may have constituents who own or reside at property that may be impacted by an electric transmission line project being proposed by Great River Energy and Minnesota Power. We respectfully seek your input on the planning of this project and your participation in the state of Minnesota's review and permitting process. This letter discusses the project details and the state of Minnesota's approval and permitting process.

### **Project Description**

Great River Energy and Minnesota Power are proposing to construct a new 115 kV transmission line called the Motley Area 115 kV Transmission Project ("Project"). The Project is proposed to be located in Motley Township and Scandia Valley Township in Morrison County; May Township and Becker Township in Cass County; and Fawn Lake Township in Todd County, Minnesota. **Attachment 1** depicts the area under consideration for the location of the Project.

The proposed Project will serve four primary purposes:

- Strengthen the electric transmission system in the Motley area, as the existing 34.5 kV system serving the area is becoming outdated and is reaching its maximum capacity.
- Provide electric service to the proposed new Crow Wing Power (CWP) Fish Trap Lake distribution substation that would provide electric power to a new pipeline pumping station proposed by Minnesota Pipe Line Company (MPL).
- Allow CWP to convert its existing Motley 34.5 kV distribution substation to operate at 115 kV due to the close proximity of the new 115 kV line to the existing substation.
- Prepare the transmission system for a future CWP distribution substation, which CWP anticipates needing in the Shamineau Lake area. This future substation could not be adequately served by the existing 34.5 kV transmission system in this area.

Great River Energy and Minnesota Power will jointly file a combined Certificate of Need and Route Permit application with the Public Utilities Commission (“Commission”) and request permission to:

- Construct approximately 14 miles of north-south single circuit 115 kV overhead transmission line between Minnesota Power’s existing 115 kV “24” transmission line and the new CWP Fish Trap Lake distribution substation. Great River Energy would install a three-way switch structure (to tap the Minnesota Power “24” line) at Cass County Road 35, approximately 1-3/4 miles north of Highway 210. Low voltage distribution and/or 34.5 kV sub-transmission circuits may be constructed on a portion of the new 115 kV structures (underbuilt) depending on the final alignment approved for the Project.
- Construct a breaker station and approximately one-half mile of 115 kV transmission line at Minnesota Power’s Dog Lake Substation.
- Convert the existing Crow Wing Power Motley Substation from 34.5 kV to 115 kV.
- Construct the proposed Crow Wing Power Fish Trap Lake Substation on Minnesota Pipe Line’s pumping station property in the vicinity of US Highway 10 and Holt Road.

Great River Energy and Minnesota Power anticipate that a 100-foot wide right-of-way (“ROW”), 50 feet from each side of the transmission centerline, will be required for the Project. Before beginning construction, Great River Energy will acquire property rights for the ROW, typically through an easement that will be negotiated with the landowner for each parcel.

The proposed structures for the Project will primarily be single pole, wood structures approximately 60 to 90 feet above ground using spans of approximately 250 to 400 feet between poles. Additionally, specialty structures, other than the single pole wood structures discussed above, may be used through areas of environmental sensitivity or where construction conditions require their use.

As one way to identify potential Project stakeholders, Great River Energy and Minnesota Power have established a “Notice Area”. The Notice Area includes all properties within the proposed route (see Attachment 1) for the transmission line, breaker station, switch and substations as well as all properties within 500 feet of either side of the proposed centerline. This notice, or similar notice, is being provided to the following:

- Landowners with property within the Notice Area;
- Residents within the Notice Area;
- Local units of government with jurisdiction in the Notice Area;
- Local and State elected officials who have constituents in the Notice Area; and
- State and local government agencies and offices with jurisdiction in the Notice Area.

**Regulatory Process Overview**

The Commission must determine whether the Project is needed (Certificate of Need) and where the Project should be located (Route Permit). Before the Project can be constructed, the Commission must first certify that the Project is needed. Certification of the Project is governed by Minnesota law, including Minnesota Statutes Section 216B.243, and Minnesota Rules Chapters 7829 and 7849, specifically Rules 7849.0010 to 7849.0400 and 7849.1000 to 7849.2100. In the Certificate of Need proceeding, the Commission will analyze whether Great River Energy and Minnesota Power have proposed the most appropriate size, type, and timing for the Project. The Certificate of Need application, once submitted, can be obtained by visiting the Commission's website at [www.puc.state.mn.us](http://www.puc.state.mn.us) in Docket No. ET2/E015/CN-14-\_\_\_\_.

In addition to certifying the Project, the Commission must also grant a Route Permit for the Project. Routing of the Project is governed by Minnesota law, including Minnesota Statutes Chapter 216E and Minnesota Rules Chapter 7850, specifically Rules 7850.2900 to 7850.4600, as they pertain to the alternative permitting process. Information on the Route Permit application, once filed, can be obtained by visiting the Minnesota Department of Commerce Energy Environmental Review and Analysis ("EERA") website at [mn.gov/commerce/energyfacilities/](http://mn.gov/commerce/energyfacilities/).

EERA staff is responsible for conducting environmental review of the Project. EERA staff is responsible for preparing both an environmental report ("ER") for the Certificate of Need proceeding and an environmental assessment ("EA") for the Route Permit proceeding. EERA staff may elect to combine these two documents and issue one EA document, which satisfies the environmental review requirements for the Certificate of Need and Route Permit proceedings.

Great River Energy and Minnesota Power will be submitting an application for a Route Permit and will identify a proposed route and routes that were evaluated but rejected. **Attachment 1** depicts the route Great River Energy and Minnesota Power intend to propose for the Project in their Route Permit Application. Other routes can be proposed during the EA scoping process to be completed by EERA. As part of its analysis, EERA will evaluate the route proposed by Great River Energy and Minnesota Power in its Route Permit application and any other routes proposed during the scoping process that will aid in the Commission's decision on the Route Permit application. The Commission may determine that the route submitted by Great River Energy and Minnesota Power, or a route proposed during the scoping process, or some combination of such routes is the most appropriate route for the Project. Selection of a final route by the Commission will be based on evaluation of the routes, guided by the Factors identified in Minnesota Statutes Section 216E.03, subdivision 7, Minnesota Rule 7850.4100, and stakeholder input received during the regulatory process.

**Need for the Project**

The Motley Area 115 kV Transmission Project is needed by 2017 to address potential circuit overloads on the existing Dog Lake-Baxter 34.5 kV electric system<sup>1</sup>. System overloads can result in power outages to those homes and businesses served by the 34.5 kV electric system.

Given the continuing risk of system overloads now coupled with the future electric demands of the proposed Minnesota Pipeline Pumping Station, Great River Energy and Minnesota Power are proposing to remove the Motley Substation's load off of the 34.5 kV system and onto the more robust 115 kV system.

Crow Wing Power has also identified the need for a future Shamineau Substation with a likely location westerly of Shamineau Lake. This load in the Shamineau Lake area could not be served by the existing 34.5 system, but it could be served by the proposed 115 kV system. The proposed route will be well suited for this location because it will allow the new substation to interconnect to the new 115 kV transmission line with minimal new 115 kV transmission line.

MPL is proposing to construct six new pumping stations along its newest pipeline (Line 4) to ensure that Minnesota refineries continue to have access to reliable and sufficient crude oil supplies to meet demand for transportation fuels. MPL plans to use available capacity on Line 4 to ensure reliability of its pipeline system, which is the primary crude oil pipeline system supplying Minnesota's two refineries. In addition to the local load-serving need discussed above, the Motley Area 115 kV Project is needed to provide electrical service to Crow Wing Power's proposed new Fish Trap Lake distribution substation, which will serve one of these six proposed pumping stations (the Fish Trap Pumping Station), which will be located at the southern terminus of the Project. MPL submitted a Certificate of Need application for the Minnesota Pipe Line Reliability Project on July 25, 2014 (MPUC Docket No. PL-5/CN-14-320).

**Biennial Transmission Planning**

Minnesota statutes include a requirement that each electric transmission-owning utility in the state file a biennial transmission planning report with the Commission in the fall of odd years. These reports provide an excellent source of background information on the transmission planning process used by utilities in Minnesota. The 2013 Biennial Transmission Planning Report is available at: [www.minnelectrans.com](http://www.minnelectrans.com).

---

<sup>1</sup> The existing Motley 34.5 kV Substation receives electric energy through the Baxter Substation's 34.5 kV electric circuit or the Dog Lake Substation's 34.5 kV circuit. The potential overloads on the 34.5 kV sub-transmission system were first identified in 2008 and included in Great River Energy's Long Range Plan. System overloads could occur if there was a contingency on the Baxter 115/34.5 kV transformer. Upon the contingency occurrence, system operators would reconfigure the system by use of switches to use the Dog Lake transformer to pick up the load normally served by Baxter. If this scenario were to happen during peak loading times, the load picked up by Dog Lake would cause an overload on the Dog Lake 115/34.5 kV transformer.

**How to Stay Informed on the Project**

You can receive email notifications when information pertaining to the Certificate of Need or Route permit is filed. Alternately, you can receive information via US Mail service.

**To receive email notifications when information related to the Certificate of Need or Route Permit is filed**, subscribe to the Project docket(s) as follows:

- 1) Go to PUC web page <http://mn.gov/puc/>
- 2) Under *Get There Faster*, click *Subscribe to a Docket*
- 3) Enter your email address and select *Go*
- 4) Click the *New Subscription* button at the bottom of the table
- 5) For Type of Subscription, select *Docket No.*
- 6) Under Docket No., select *14*
- 7) In the adjacent box to the right, enter \_\_\_ for the Certificate of Need or \_\_ for the Route Permit
- 8) The description, "CON DOCKET TITLE" or "RP DOCKET TITLE" should appear in the new box.
- 9) Click the *Add to List* button below the table.
- 10) Click *Save* at the bottom of the page

To be placed on the **paper copy Project Certificate of Need mailing list**, reference Docket No. ET2/E015/CN-14-\_\_\_ in, mail, fax, or email request to Robin Benson at Minnesota Public Utilities Commission, 121 7th Place E., Suite 350, St. Paul, MN 55101-2147, Fax: 651-297-7073 or [robin.benson@state.mn.us](mailto:robin.benson@state.mn.us).

To be placed on the **paper copy Project Route Permit mailing list** (Docket No. ET2/E015/TL-14\_\_\_), register at [mn.gov/commerce/energyfacilities/](http://mn.gov/commerce/energyfacilities/), by clicking on the "Transmission Lines" tab, selecting the link for the 115 kV Transmission Line Project in the Motley Area from the listed projects, and then clicking the links next to the "Mailing List" heading. Alternately, you may contact Department of Commerce staff at the address below.

<p><b>Minnesota Public Utilities Commission</b>                  Bret Eknes                  121 7<sup>th</sup> Place East, Suite 350                  St. Paul, Minnesota 55101                  651.296.7124                  800.657.3782  <a href="mailto:bret.eknes@state.mn.us">bret.eknes@state.mn.us</a></p>	<p><b>Minnesota Department of Commerce</b>                  Deborah Pile, State Permit Manager                  85 7<sup>th</sup> Place East, Suite 500                  St. Paul, Minnesota 55101                  651.297.2375                  800.657.3794  <a href="mailto:deborah.pile@state.mn.us">deborah.pile@state.mn.us</a></p>
--	--



The Great River Energy contacts for questions about this Project are:

Mark Strohfus  
Environmental Project Lead  
Great River Energy  
12300 Elm Creek Blvd  
Maple Gove, MN 55369  
763.445.5210  
612.961.9820  
MStrohfus@GREnergy.com

Rick Heuring  
Senior Field Representative  
Great River Energy  
12300 Elm Creek Blvd  
Maple Grove, MN 55369  
763.445.5979  
612.308.2170  
RHeuring@GREnergy.com

Lastly, Great River Energy maintains a project web page containing key milestones and information it has posted to the docket at:

[www.greatriverenergy.com/deliveringelectricity/currentprojects/projects\\_motley.html](http://www.greatriverenergy.com/deliveringelectricity/currentprojects/projects_motley.html)

Sincerely,

Mark Strohfus  
Environmental Project Lead

Enclosure: Attachment 1 – Project Fact Sheet and Route Map

# Motley Area 115 kV Transmission Project



**Great River Energy**  
 12300 Elm Creek Blvd  
 Maple Grove, MN 55369  
 1-888-521-0130  
[www.greatriverenergy.com](http://www.greatriverenergy.com)



**Crow Wing Power**  
 PO Box 507  
 Brainerd, MN 56401  
 1-800-648-9401  
[www.cwpower.com](http://www.cwpower.com)

**Project Need**

Great River Energy proposes to build and operate approximately 14 miles of new 115 kilovolt (kV) overhead transmission line in southern Cass County, eastern Todd County, and northern Morrison County to ensure the reliability of electric service to the members of Crow Wing Power (CWP). The project would:

- Strengthen the electric transmission system in the Motley area, as the existing 34.5 kV system serving the area is becoming outdated and is reaching its maximum capacity.
- Provide electric service to the proposed new CWP Fish Trap Lake distribution substation that would provide electric power to a new pipeline pumping station proposed by Minnesota Pipe Line Company (MPL).
- Allow CWP to convert its existing Motley 34.5 kV distribution substation to operate at 115 kV due to the close proximity of the new 115 kV line to the existing substation.
- Prepare the transmission system for a future CWP distribution substation, which CWP anticipates needing in the Shamineau Lake area. This future substation could not be adequately served by the existing 34.5 kV transmission system in this area.

As a component of this project, additional circuit breakers will be added to the existing Dog Lake Substation along with ½ mile of new 115 kV transmission line for system reliability.

**Project Description**

The proposed project (see back for a map of the preliminary transmission line route) would connect to the existing Minnesota Power 115 kV “24” transmission line at Cass County Road 35, approximately 1-3/4 miles north of Highway 210. At this location Great River Energy would install a three-way switch structure. From the switch structure, the new 115 kV overhead transmission line would extend southerly approximately 14 miles to serve the new CWP Fish Trap Lake distribution substation on MPL’s pipeline pumping station property at U.S. Hwy. 10 and Holt Road. The new transmission line would require a 100-foot-wide right of way, 50 feet on each side of the centerline. Some segments of the transmission line would carry lower-voltage distribution lines as underbuild. In most cases, single round wood poles ranging in height from 60 - 90 feet above ground would be used (see photo at right). The typical distance between poles would range from 250 - 400 feet.



*Typical 115 kV Wood Transmission Line Structure*

**Permitting**

The Minnesota Public Utilities Commission (Commission) must issue a Certificate of Need (CON) and a Route Permit before the project can proceed. Great River Energy will submit a combined CON/Route Permit application containing relevant information that will help the Commission determine if there is sufficient need for the project and evaluate the proposed route and any alternative routes brought forth by the public. At the conclusion of the permitting process, the Commission will determine the final location of the proposed transmission facilities.

The public and regulatory agencies will have numerous opportunities to provide input during the CON and Route Permitting process, which is conducted and facilitated by Commission and Minnesota Department of Commerce (DOC) staff. Public meetings will be held and other opportunities will be provided for collecting comments and responses. The DOC will prepare an Environmental Assessment document for the project.

**Tree Removal**

Removal of trees and certain vegetation along the transmission line right-of-way will be necessary for safety, construction and maintenance purposes. Landowners will be contacted prior to tree removal activities.

**Project Schedule**

Project notification and open house -----	Fall 2014
Permitting -----	Late 2014 – late 2015
Easement acquisition -----	2016
Transmission line design -----	2016
Environmental permits -----	2016
Transmission line construction -----	2017
Energization -----	Late 2017

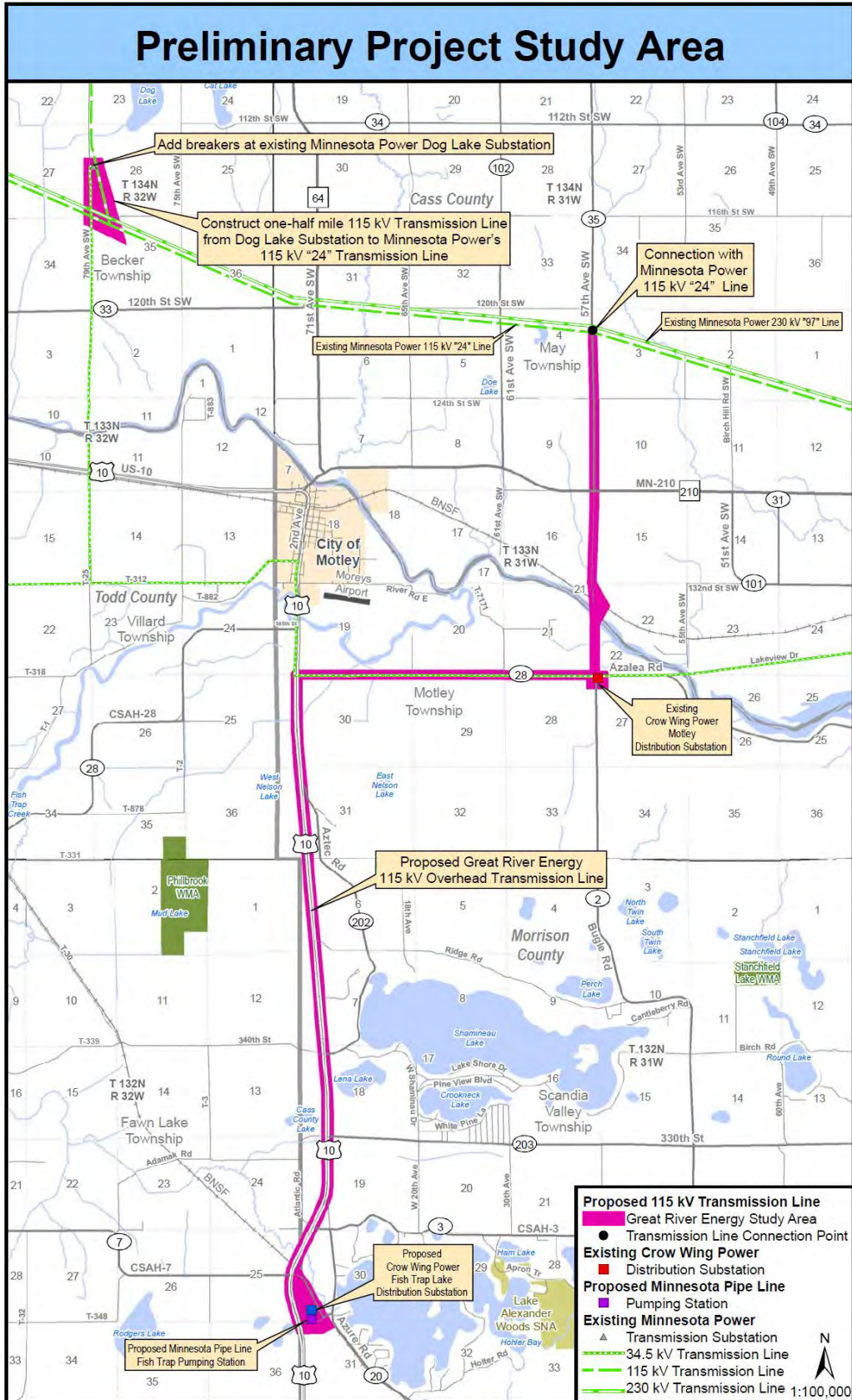
**For project updates and information, visit [greatriverenergy.com/Motley](http://greatriverenergy.com/Motley) or contact:**

Rick Heuring  
 Sr. Field Representative  
 Great River Energy - Land Rights Department  
 (763) 445-5979  
[rheuring@grenergy.com](mailto:rheuring@grenergy.com)

Mark Strohfus  
 Environmental Project Lead  
 Great River Energy – Environmental Services Department  
 763-445-5210  
[mstrohfus@grenergy.com](mailto:mstrohfus@grenergy.com)

Date last revised: 9/17/2014





# Local Governments List

# Attachment E

<b>County</b>	<b>City</b>	<b>Township</b>
Morrison	Motley	Motley Scandia Valley
Cass	————	May Becker
Todd	————	Fawn Lake

## State Elected Officials

## Attachment F

State Elected	Congress and Senate
Rep. Mark Anderson	Rep. Rick Nolan
Rep. Ron Kresha	Rep. Collin Peterson
Sen. Paul Gazelka	Sen. Amy Klobuchar
	Sen. Al Franken

\*This list will be revised if necessary once election results are certified.

\_\_\_\_, 2014

**RE: Notice of Certificate of Need Application for Great River Energy and Minnesota Power's Motley Area 115 kV Transmission Project in Morrison, Cass and Todd Counties, Minnesota**  
**MPUC Docket No.: ET2/E015/CN-\_\_\_\_\_**

Dear Sir/Madam:

You have received this letter because you may have jurisdiction over an electric transmission line project being proposed by Great River Energy and Minnesota Power. We respectfully seek your input on the planning of this project and your participation in the state of Minnesota's review and permitting process. This letter discusses the project details and the state of Minnesota's approval and permitting process.

### **Project Description**

Great River Energy and Minnesota Power are proposing to construct a new 115 kV transmission line called the Motley Area 115 kV Transmission Project ("Project"). The Project is proposed to be located in Motley Township and Scandia Valley Township in Morrison County; May Township and Becker Township in Cass County; and Fawn Lake Township in Todd County, Minnesota. **Attachment 1** depicts the area under consideration for the location of the Project.

The proposed Project will serve four primary purposes:

- Strengthen the electric transmission system in the Motley area, as the existing 34.5 kV system serving the area is becoming outdated and is reaching its maximum capacity.
- Provide electric service to the proposed new Crow Wing Power (CWP) Fish Trap Lake distribution substation that would provide electric power to a new pipeline pumping station proposed by Minnesota Pipe Line Company (MPL).
- Allow CWP to convert its existing Motley 34.5 kV distribution substation to operate at 115 kV due to the close proximity of the new 115 kV line to the existing substation.
- Prepare the transmission system for a future CWP distribution substation, which CWP anticipates needing in the Shamineau Lake area. This future substation could not be adequately served by the existing 34.5 kV transmission system in this area.

Great River Energy and Minnesota Power will jointly file a combined Certificate of Need and Route Permit application with the Public Utilities Commission ("Commission") and request permission to:

- Construct approximately 14 miles of north-south single circuit 115 kV overhead transmission line between Minnesota Power's existing 115 kV "24" transmission line and the new CWP Fish Trap Lake distribution substation. Great River Energy would install a three-way switch structure (to tap the Minnesota Power "24" line) at Cass County Road 35, approximately 1-3/4 miles north of Highway 210. Low voltage distribution and/or 34.5 kV sub-transmission circuits may be constructed on a portion of the new 115 kV structures (underbuilt) depending on the final alignment approved for the Project.
- Construct a breaker station and approximately one-half mile of 115 kV transmission line at Minnesota Power's Dog Lake Substation.
- Convert the existing Crow Wing Power Motley Substation from 34.5 kV to 115 kV.
- Construct the proposed Crow Wing Power Fish Trap Lake Substation on Minnesota Pipe Line's pumping station property in the vicinity of US Highway 10 and Holt Road.

Great River Energy and Minnesota Power anticipate that a 100-foot wide right-of-way ("ROW"), 50 feet from each side of the transmission centerline, will be required for the Project. Before beginning construction, Great River Energy will acquire property rights for the ROW, typically through an easement that will be negotiated with the landowner for each parcel.

The proposed structures for the Project will primarily be single pole, wood structures approximately 60 to 90 feet above ground using spans of approximately 250 to 400 feet between poles. Additionally, specialty structures, other than the single pole wood structures discussed above, may be used through areas of environmental sensitivity or where construction conditions require their use.

As one way to identify potential Project stakeholders, Great River Energy and Minnesota Power have established a "Notice Area". The Notice Area includes all properties within the proposed route (see Attachment 1) for the transmission line, breaker station, switch and substations as well as all properties within 500 feet of either side of the proposed centerline. This notice, or similar notice, is being provided to the following:

- Landowners with property within the Notice Area;
- Residents within the Notice Area;
- Local units of government with jurisdiction in the Notice Area;
- Local and State elected officials who have constituents in the Notice Area; and
- State and local government agencies and offices with jurisdiction in the Notice Area.

### **Regulatory Process Overview**

The Commission must determine whether the Project is needed (Certificate of Need) and where the Project should be located (Route Permit). Before the Project can be constructed, the Commission must first certify that the Project is needed. Certification of the Project is governed by Minnesota law, including Minnesota Statutes Section 216B.243, and Minnesota Rules

Chapters 7829 and 7849, specifically Rules 7849.0010 to 7849.0400 and 7849.1000 to 7849.2100. In the Certificate of Need proceeding, the Commission will analyze whether Great River Energy and Minnesota Power have proposed the most appropriate size, type, and timing for the Project. The Certificate of Need application, once submitted, can be obtained by visiting the Commission's website at [www.puc.state.mn.us](http://www.puc.state.mn.us) in Docket No. ET2/E015/CN-14-\_\_\_\_.

In addition to certifying the Project, the Commission must also grant a Route Permit for the Project. Routing of the Project is governed by Minnesota law, including Minnesota Statutes Chapter 216E and Minnesota Rules Chapter 7850, specifically Rules 7850.2900 to 7850.4600, as they pertain to the alternative permitting process. Information on the Route Permit application, once filed, can be obtained by visiting the Minnesota Department of Commerce Energy Environmental Review and Analysis ("EERA") website at [mn.gov/commerce/energyfacilities/](http://mn.gov/commerce/energyfacilities/).

EERA staff is responsible for conducting environmental review of the Project. EERA staff is responsible for preparing both an environmental report ("ER") for the Certificate of Need proceeding and an environmental assessment ("EA") for the Route Permit proceeding. EERA staff may elect to combine these two documents and issue one EA document, which satisfies the environmental review requirements for the Certificate of Need and Route Permit proceedings.

Great River Energy and Minnesota Power will be submitting an application for a Route Permit and will identify a proposed route and routes that were evaluated but rejected. **Attachment 1** depicts the route Great River Energy and Minnesota Power intend to propose for the Project in their Route Permit Application. Other routes can be proposed during the EA scoping process to be completed by EERA. As part of its analysis, EERA will evaluate the route proposed by Great River Energy and Minnesota Power in its Route Permit application and any other routes proposed during the scoping process that will aid in the Commission's decision on the Route Permit application. The Commission may determine that the route submitted by Great River Energy and Minnesota Power, or a route proposed during the scoping process, or some combination of such routes is the most appropriate route for the Project. Selection of a final route by the Commission will be based on evaluation of the routes, guided by the Factors identified in Minnesota Statutes Section 216E.03, subdivision 7, Minnesota Rule 7850.4100, and stakeholder input received during the regulatory process.

### **Need for the Project**

The Motley Area 115 kV Transmission Project is needed by 2017 to address potential circuit overloads on the existing Dog Lake-Baxter 34.5 kV electric system<sup>1</sup>. System overloads can result in power outages to those homes and businesses served by the 34.5 kV electric system.

---

<sup>1</sup> The existing Motley 34.5 kV Substation receives electric energy through the Baxter Substation's 34.5 kV electric circuit or the Dog Lake Substation's 34.5 kV circuit. The potential overloads on the 34.5 kV sub-transmission system were first identified in 2008 and included in Great River Energy's Long Range Plan. System overloads could occur if there was a contingency on the Baxter 115/34.5 kV transformer. Upon the contingency occurrence, system



Given the continuing risk of system overloads now coupled with the future electric demands of the proposed Minnesota Pipeline Pumping Station, Great River Energy and Minnesota Power are proposing to remove the Motley Substation's load off of the 34.5 kV system and onto the more robust 115 kV system.

Crow Wing Power has also identified the need for a future Shamineau Substation with a likely location westerly of Shamineau Lake. This substation could not be served by the existing 34.5 kV system, but it could be served by the proposed 115 kV system. The proposed route will be well suited for this location because it will allow the new substation to interconnect to the new 115 kV transmission line minimal new 115 kV transmission line.

MPL is proposing to construct six new pumping stations along its newest pipeline (Line 4) to ensure that Minnesota refineries continue to have access to reliable and sufficient crude oil supplies to meet demand for transportation fuels. MPL plans to use available capacity on Line 4 to ensure reliability of its pipeline system, which is the primary crude oil pipeline system supplying Minnesota's two refineries. In addition to the local load-serving need discussed above, the Motley Area 115 kV Project is needed to provide electrical service to Crow Wing Power's proposed new Fish Trap Lake distribution substation, which will serve one of these six proposed pumping stations (the Fish Trap Pumping Station), which will be located at the southern terminus of the Project. MPL submitted a Certificate of Need application for the Minnesota Pipe Line Reliability Project on July 25, 2014 (MPUC Docket No. PL-5/CN-14-320).

### **Biennial Transmission Planning**

Minnesota statutes include a requirement that each electric transmission-owning utility in the state file a biennial transmission planning report with the Commission in the fall of odd years. These reports provide an excellent source of background information on the transmission planning process used by utilities in Minnesota. The 2013 Biennial Transmission Planning Report is available at: [www.minnelectrans.com](http://www.minnelectrans.com).

### **How to Stay Informed on the Project**

You can receive email notifications when information pertaining to the Certificate of Need or Route permit is filed. Alternately, you receive information via US Mail service.

**To receive email notifications when information related to the Certificate of Need or Route Permit is filed**, subscribe to the Project docket(s) as follows:

- 1) Go to PUC web page <http://mn.gov/puc/>
- 2) Under *Get There Faster*, click *Subscribe to a Docket*

---

operators would reconfigure the system by use of switches to use the Dog Lake transformer to pick up the load normally served by Baxter. If this scenario were to happen during peak loading times, the load picked up by Dog Lake would cause an overload on the Dog Lake 115/34.5 kV transformer.

- 3) Enter your email address and select *Go*
- 4) Click the *New Subscription* button at the bottom of the table
- 5) For Type of Subscription, select *Docket No.*
- 6) Under Docket No., select *14*
- 7) In the adjacent box to the right, enter \_\_\_ for the Certificate of Need or \_\_ for the Route Permit
- 8) The description, "CON DOCKET TITLE" or "RP DOCKET TITLE" should appear in the new box.
- 9) Click the *Add to List* button below the table.
- 10) Click *Save* at the bottom of the page

To be placed on the **paper copy Project Certificate of Need mailing list**, reference Docket No. ET2/E015/CN-14-\_\_\_\_ in, mail, fax, or email request to Robin Benson at Minnesota Public Utilities Commission, 121 7th Place E., Suite 350, St. Paul, MN 55101-2147, Fax: 651-297-7073 or [robin.benson@state.mn.us](mailto:robin.benson@state.mn.us).

To be placed on the **paper copy Project Route Permit mailing list** (Docket No. ET2/E015/TL-14\_\_\_\_), register at [mn.gov/commerce/energyfacilities/](http://mn.gov/commerce/energyfacilities/), by clicking on the "Transmission Lines" tab, selecting the link for the 115 kV Transmission Line Project in the Motley Area from the listed projects, and then clicking the links next to the "Mailing List" heading. Alternately, you may contact Department of Commerce staff at the address below.

<p><b>Minnesota Public Utilities Commission</b>                  Bret Eknes                  121 7<sup>th</sup> Place East, Suite 350                  St. Paul, Minnesota 55101                  651.296.7124                  800.657.3782  <a href="mailto:bret.eknes@state.mn.us">bret.eknes@state.mn.us</a></p>	<p><b>Minnesota Department of Commerce</b>                  Deborah Pile, State Permit Manager                  85 7<sup>th</sup> Place East, Suite 500                  St. Paul, Minnesota 55101                  651.297.2375                  800.657.3794  <a href="mailto:deborah.pile@state.mn.us">deborah.pile@state.mn.us</a></p>
--	--

The Great River Energy contacts for questions about this Project are:

Mark Strohfus  
 Environmental Project Lead  
 Great River Energy  
 12300 Elm Creek Blvd  
 Maple Gove, MN 55369  
 763.445.5210  
 612.961.9820  
[MStrohfus@GREnergy.com](mailto:MStrohfus@GREnergy.com)

Rick Heuring  
 Senior Field Representative  
 Great River Energy  
 12300 Elm Creek Blvd  
 Maple Grove, MN 55369  
 763.445.5979  
 612.308.2170  
[RHeuring@GREnergy.com](mailto:RHeuring@GREnergy.com)

Lastly, Great River Energy maintains a project web page containing key milestones and information it has posted to the docket at:

[www.greatriverenergy.com/deliveringelectricity/currentprojects/projects\\_motley.html](http://www.greatriverenergy.com/deliveringelectricity/currentprojects/projects_motley.html)

Sincerely,

Mark Strohfus  
Environmental Project Lead

Enclosure: Attachment 1 – Project Fact Sheet and Route Map

# Motley Area 115 kV Transmission Project



**Great River Energy**  
 12300 Elm Creek Blvd  
 Maple Grove, MN 55369  
 1-888-521-0130  
[www.greatriverenergy.com](http://www.greatriverenergy.com)



**Crow Wing Power**  
 PO Box 507  
 Brainerd, MN 56401  
 1-800-648-9401  
[www.cwpower.com](http://www.cwpower.com)

**Project Need**

Great River Energy proposes to build and operate approximately 14 miles of new 115 kilovolt (kV) overhead transmission line in southern Cass County, eastern Todd County, and northern Morrison County to ensure the reliability of electric service to the members of Crow Wing Power (CWP). The project would:

- Strengthen the electric transmission system in the Motley area, as the existing 34.5 kV system serving the area is becoming outdated and is reaching its maximum capacity.
- Provide electric service to the proposed new CWP Fish Trap Lake distribution substation that would provide electric power to a new pipeline pumping station proposed by Minnesota Pipe Line Company (MPL).
- Allow CWP to convert its existing Motley 34.5 kV distribution substation to operate at 115 kV due to the close proximity of the new 115 kV line to the existing substation.
- Prepare the transmission system for a future CWP distribution substation, which CWP anticipates needing in the Shamineau Lake area. This future substation could not be adequately served by the existing 34.5 kV transmission system in this area.

As a component of this project, additional circuit breakers will be added to the existing Dog Lake Substation along with ½ mile of new 115 kV transmission line for system reliability.

**Project Description**

The proposed project (see back for a map of the preliminary transmission line route) would connect to the existing Minnesota Power 115 kV “24” transmission line at Cass County Road 35, approximately 1-3/4 miles north of Highway 210. At this location Great River Energy would install a three-way switch structure. From the switch structure, the new 115 kV overhead transmission line would extend southerly approximately 14 miles to serve the new CWP Fish Trap Lake distribution substation on MPL’s pipeline pumping station property at U.S. Hwy. 10 and Holt Road. The new transmission line would require a 100-foot-wide right of way, 50 feet on each side of the centerline. Some segments of the transmission line would carry lower-voltage distribution lines as underbuild. In most cases, single round wood poles ranging in height from 60 - 90 feet above ground would be used (see photo at right). The typical distance between poles would range from 250 - 400 feet.



*Typical 115 kV Wood Transmission Line Structure*

**Permitting**

The Minnesota Public Utilities Commission (Commission) must issue a Certificate of Need (CON) and a Route Permit before the project can proceed. Great River Energy will submit a combined CON/Route Permit application containing relevant information that will help the Commission determine if there is sufficient need for the project and evaluate the proposed route and any alternative routes brought forth by the public. At the conclusion of the permitting process, the Commission will determine the final location of the proposed transmission facilities.

The public and regulatory agencies will have numerous opportunities to provide input during the CON and Route Permitting process, which is conducted and facilitated by Commission and Minnesota Department of Commerce (DOC) staff. Public meetings will be held and other opportunities will be provided for collecting comments and responses. The DOC will prepare an Environmental Assessment document for the project.

**Tree Removal**

Removal of trees and certain vegetation along the transmission line right-of-way will be necessary for safety, construction and maintenance purposes. Landowners will be contacted prior to tree removal activities.

**Project Schedule**

Project notification and open house -----	Fall 2014
Permitting -----	Late 2014 – late 2015
Easement acquisition -----	2016
Transmission line design -----	2016
Environmental permits -----	2016
Transmission line construction -----	2017
Energization -----	Late 2017

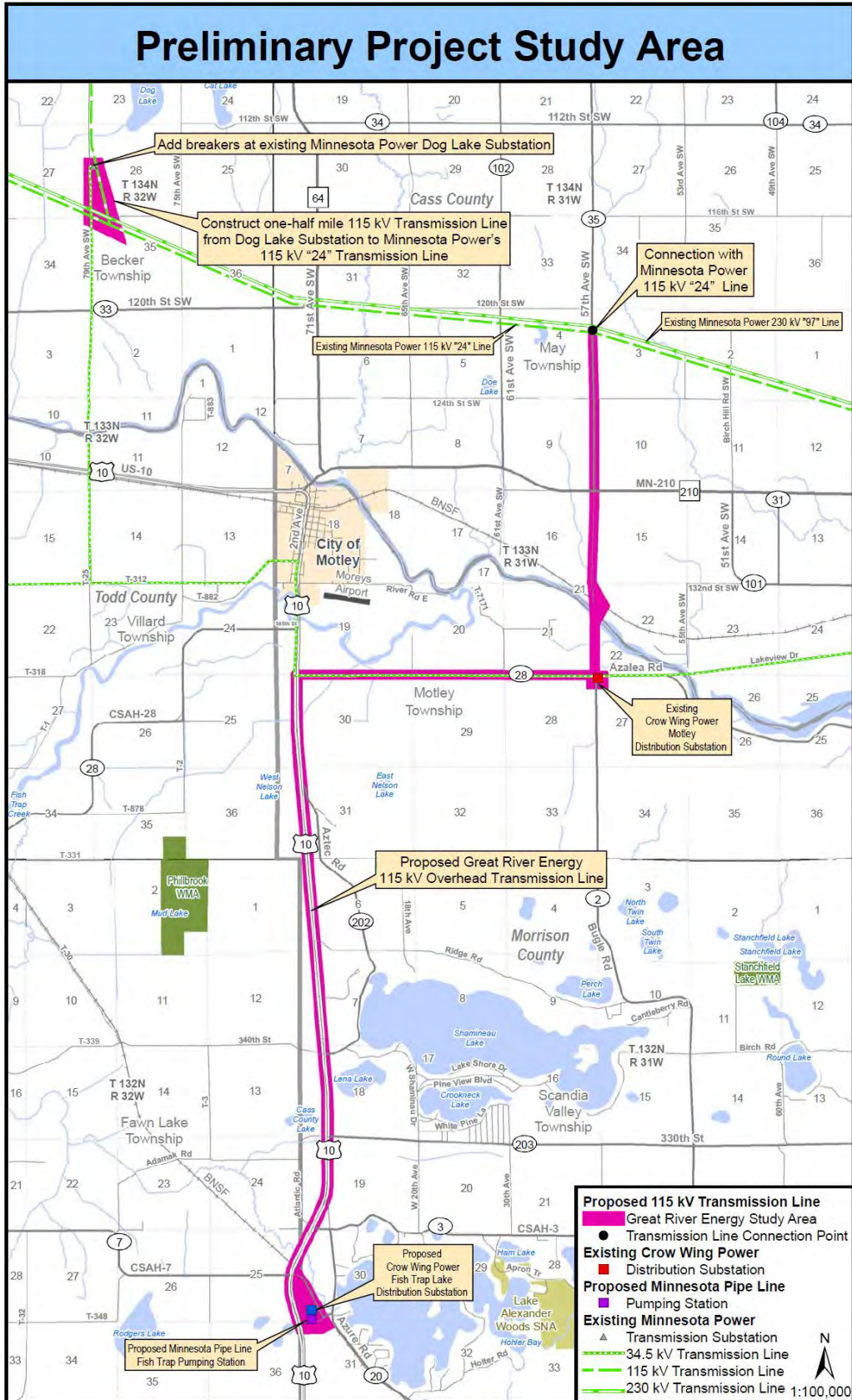
**For project updates and information, visit [greatriverenergy.com/Motley](http://greatriverenergy.com/Motley) or contact:**

Rick Heuring  
 Sr. Field Representative  
 Great River Energy - Land Rights Department  
 (763) 445-5979  
[rheuring@grenergy.com](mailto:rheuring@grenergy.com)

Mark Strohfus  
 Environmental Project Lead  
 Great River Energy – Environmental Services Department  
 763-445-5210  
[mstrohfus@grenergy.com](mailto:mstrohfus@grenergy.com)

Date last revised: 9/17/2014





**Federal and State Agencies**

**Attachment H**

<b>Agencies</b>	<b>Regional Development Commissions</b>	<b>Soil &amp; Water Conservation Districts</b>	<b>Watershed Districts</b>
Minnesota Board of Water and Soil Resources	Morrison County Regional Economic Development Commission	Morrison County Soil and Water Conservation District	None
Minnesota Department of Agriculture	Cass County Economic Development Corporation	Cass County Soil and Water Conservation District	
Minnesota Department of Health	Todd County Economic Development Corporation	Todd County Soil and Water Conservation District	
Minnesota Department of Natural Resources	Region Five Development Commission		
Minnesota Department of Transportation			
Minnesota Pollution Control Agency			
Natural Resources Conservation Service			
State Historic Preservation Office-Minnesota Historical Society			
St. Paul District, U.S. Army Corps of Engineers			
U.S. Department of Agriculture			
U.S. Fish and Wildlife Service			

**NOTICE****Great River Energy and Minnesota Power to Propose to Construct a 115 kV Electric Transmission Line in the Motley Area in Morrison, Cass and Todd Counties**

Great River Energy and Minnesota Power are proposing a 115 kV transmission line project in Motley Township and Scandia Valley Township in Morrison County; May Township and Becker Township in Cass County; and Fawn Lake Township in Todd County, Minnesota. Great River Energy and Minnesota Power will jointly file a combined Certificate of Need and Route Permit application with the Public Utilities Commission (“Commission”) and request permission to:

- Construct a north-south transmission line initiating at Minnesota Power’s existing 115 kV “24” transmission line at Cass County Road 35, approximately 1-3/4 miles north of Highway 210. At this location Great River Energy would install a three-way switch structure. From the switch structure, the new 115 kV overhead transmission line would extend southerly terminating approximately 14 miles at the new CWP Fish Trap Lake distribution substation. The proposed transmission line would be a single 115 kV circuit. Low voltage distribution and/or 34.5 kV sub-transmission circuits may be constructed on a portion of the new 115 kV structures (underbuilt) depending on the final alignment approved for the Project.
- Construct a breaker station and approximately one-half mile of 115 kV transmission line at Minnesota Power’s Dog Lake Substation.
- Convert the existing Crow Wing Power Motley Substation from 34.5 kV to 115 kV.
- Construct the proposed Crow Wing Power Fish Trap Lake Substation on Minnesota Pipe Line’s pumping station property in the vicinity of US Highway 10 and Holt Road.

**Project Information**

Great River Energy and Minnesota Power anticipate that a 100-foot wide right-of-way will be required for the Project. Before beginning construction, Great River Energy will acquire property rights for the right-of-way, typically through an easement that will be negotiated with the landowner for each parcel.

The proposed structures for the Project are primarily single pole, wood structures approximately 60 to 90 feet above ground using spans of approximately 275 to 400 feet between poles. Additionally, specialty structures, other than the single pole wood structures discussed above, may be used through areas of environmental sensitivity or where construction conditions require their use.

**Need for the Project**

The Project is needed to improve local reliability (relieve transmission system overloads) and to provide electrical service to the new Crow Wing Power Fish Trap Lake distribution substation, which will provide power to a pumping station to be constructed in the area by Minnesota Pipe

Line Company pumping station. Great River Energy also participates in biennial transmission planning with the most recent plan available at [www.minnelectrans.com](http://www.minnelectrans.com).

**Regulatory Process Overview**

For the Project, the Commission must determine whether the Project is needed (Certificate of Need) and where the Project should be located (Route Permit). Before the Project can be constructed, the Commission must first certify that the Project is needed. The certification of the Project is governed by Minnesota law, including Minnesota Statutes Section 216B.243, and Minnesota Rules Chapters 7829 and 7849, specifically Rules 7849.0010 to 7849.0400 and 7849.1000 to 7849.2100. In the Certificate of Need proceeding, the Commission will analyze whether Great River Energy and Minnesota Power have proposed the most appropriate size, type, and timing for the Project. The Certificate of Need application, once submitted, can be obtained by visiting the Commission’s website at [www.puc.state.mn.us](http://www.puc.state.mn.us) in Docket No. ET2/E015/CN-14-\_\_\_\_.

**Public Involvement**

If you would like to have your name added to the Project Route Permit mailing list (Docket No. ET2/E015/TL-14\_\_\_\_), you may register by visiting the Department of Commerce webpage at [mn.gov/commerce/energyfacilities/](http://mn.gov/commerce/energyfacilities/), clicking on the “Transmission Lines” tab, selecting the link for the Motley Area 115 kV Transmission Line Project from the listed projects, and then clicking the links next to the “Mailing List” heading. Alternately, you may contact Department of Commerce staff at the address below. Please be aware that the Route Permit mailing list may not be available for online registration until the Route Permit application is submitted.

A separate service list is maintained for the Certificate of Need proceeding. To be placed on the Project Certificate of Need mailing list (Docket No. ET2/E015/CN-14-\_\_\_\_), mail, fax, or email Robin Benson at Minnesota Public Utilities Commission, 121 7th Place E., Suite 350, St. Paul, MN 55101-2147, Fax: 651-297-7073 or [robin.benson@state.mn.us](mailto:robin.benson@state.mn.us).

<p><b>Minnesota Public Utilities Commission</b>                  Bret Eknes                  121 7<sup>th</sup> Place East, Suite 350                  St. Paul, Minnesota 55101                  651.296.7124                  800.657.3782  <a href="mailto:bret.eknes@state.mn.us">bret.eknes@state.mn.us</a></p>	<p><b>Minnesota Department of Commerce</b>                  Deborah Pile, State Permit Manager                  85 7<sup>th</sup> Place East, Suite 500                  St. Paul, Minnesota 55101                  651.297.2375                  800.657.3794  <a href="mailto:deborah.pile@state.mn.us">deborah.pile@state.mn.us</a></p>
--	--



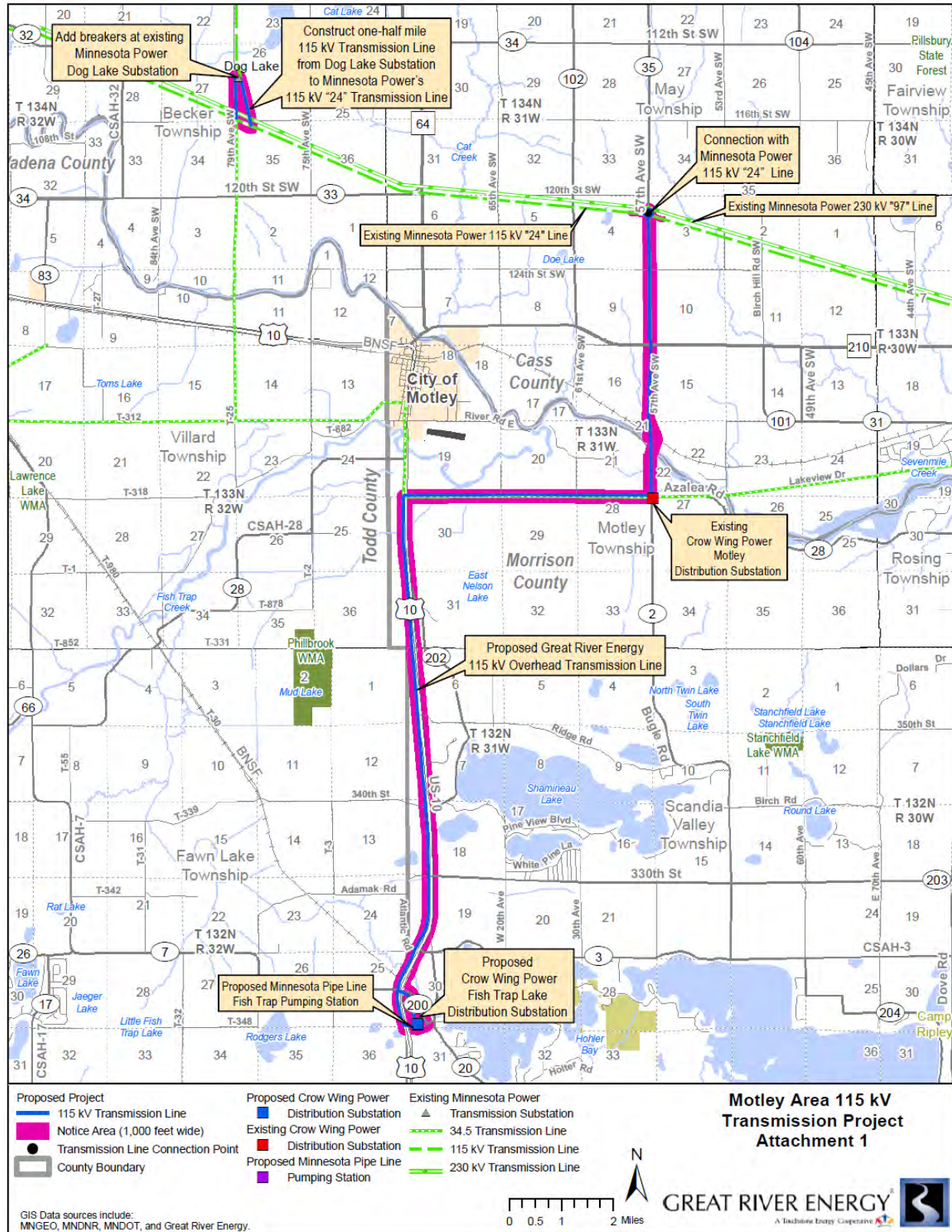
Please visit

[http://greatriverenergy.com/deliveringelectricity/currentprojects/projects\\_motley.html](http://greatriverenergy.com/deliveringelectricity/currentprojects/projects_motley.html)

for more information on the Project or you may contact us directly with your questions:

Mark Strohfus  
Environmental Project Lead  
Great River Energy  
12300 Elm Creek Blvd  
Maple Gove, MN 55369  
763.445.5210  
612.961.9820  
[MStrohfus@GREnergy.com](mailto:MStrohfus@GREnergy.com)

Rick Heuring  
Senior Field Representative  
Great River Energy  
12300 Elm Creek Blvd  
Maple Grove, MN 55369  
763.445.5979  
612.308.2170  
[RHeuring@GREnergy.com](mailto:RHeuring@GREnergy.com)



<b>Newspapers/Publications</b>
Morrison County Record
Staples World
Brainerd Daily Dispatch

**AFFIDAVIT OF MAILING**

STATE OF MINNESOTA            )  
  ) ss.  
COUNTY OF HENNEPIN        )

In the Matter of the Application of Great River Energy and Minnesota Power for a Certificate of Need for the Motley Area 115 kV Transmission Project in Morrison, Cass and Todd Counties, Minnesota

MPUC Docket No.: ET-2/E015/CN-14-

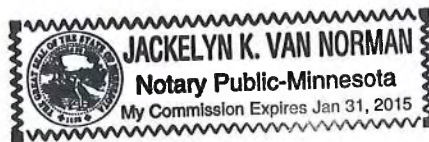
I, Mark Strohfus, hereby certify that on the 1<sup>st</sup> day of October, 2014, I directed to be sent via U.S. Mail a true and correct copy of the following notice to all persons on the attached mailing list (those required by 7829.2550 Subpart 1A and 1B; those on the Special Service List - General List 7850.2100-1A requesting paper service), by depositing same, postage prepaid mail, in the United States mail:

**Notice Plan Petition for the Application of Great River Energy and Minnesota Power for a Certificate of Need for the Motley Area 115 kV Transmission Project in Morrison, Cass and Todd Counties, Minnesota**

*Mark Strohfus*

Subscribed and sworn to before me this 1st day of October, 2014.

*Jackelyn K. Van Norman*  
NOTARY PUBLIC



Michelle F Bissonnette  
HDR Engineering Inc  
Golden Hills Office Center  
701 Xenia Avenue S Suite 600  
Minneapolis MN 55416

Minnesota Dept of Commerce  
Division of Energy Resources  
85 7<sup>th</sup> Place East Suite 500  
St Paul MN 55101

Thomas Davis  
1161 50<sup>th</sup> Avenue  
Sherburn MI 56171

Office of the Attorney General  
Residential & Small Business Utilities Division  
445 Minnesota Street  
St Paul MN 55101

Colleen Mueller  
22186 State Hwy 4  
Paynesville MN 56362

Todd Tadych  
American Transmission Company LLC  
5303 Fen Oak Dr  
Madison WI 53718

Kristen Eide Tollefson  
R-CURE  
PO Box 129  
Frontenac MN 55026