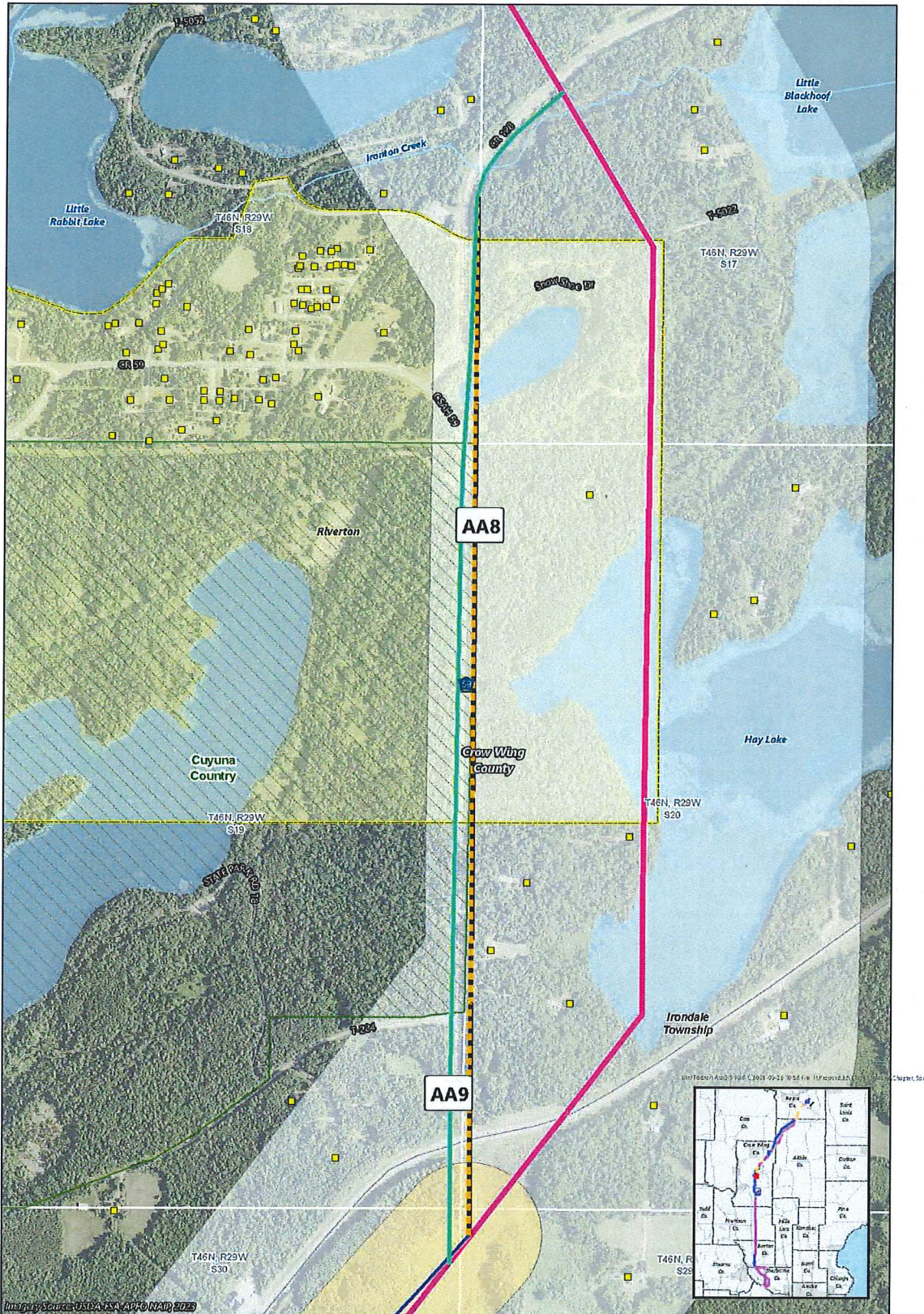


ATTACHMENT A

APPLICANTS' FINDING OF FACT INCLUDING ATTACHMENT D



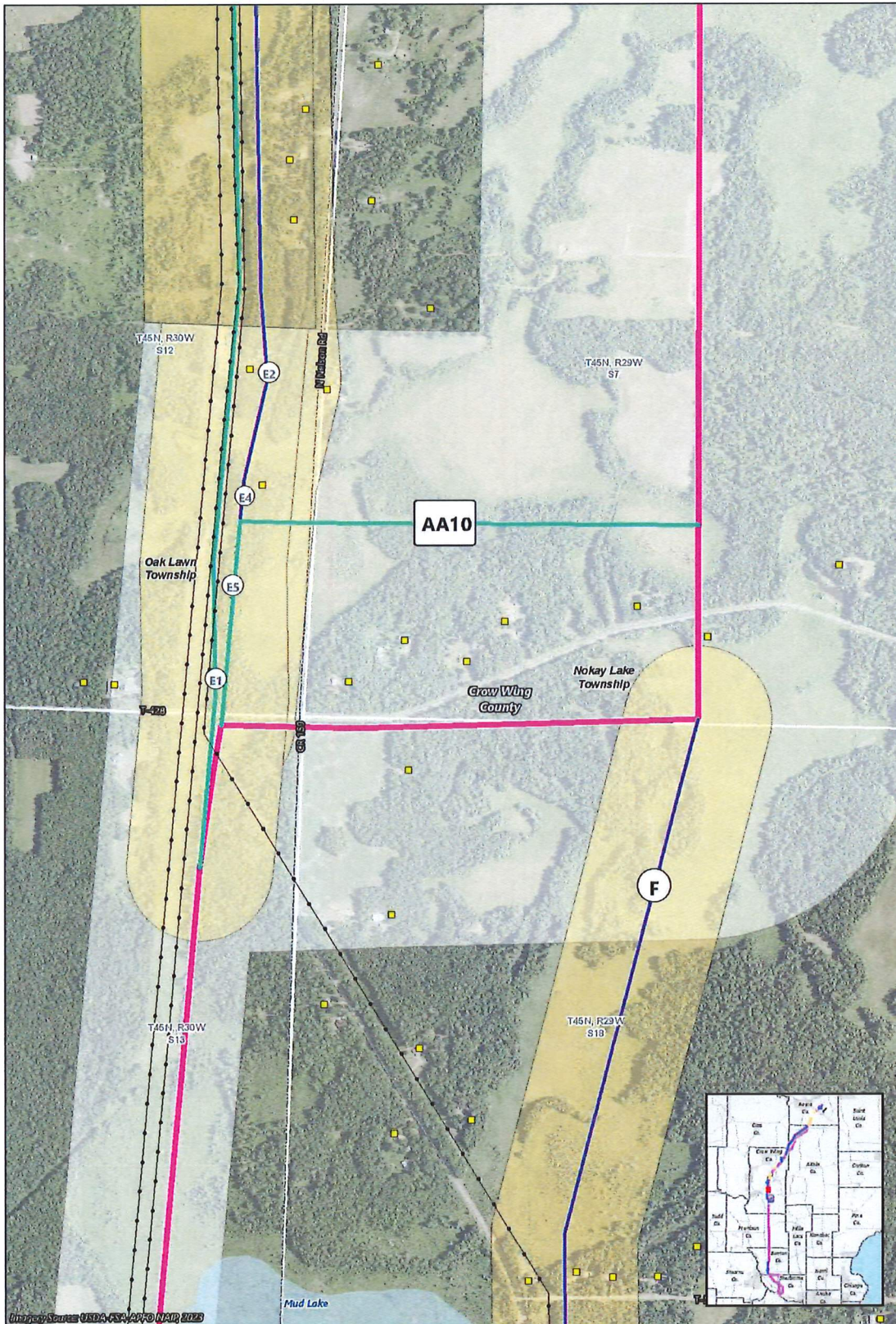
Imagery Source: USDA NSA APPD NAIP 2023

- Applicants' Modified Route
- Applicants' Proposed Route
- Route Width
- Route Alternative
- Alignment Alternative
- Route Alternative Width
- Residence
- PWI Waterway
- PWI Basin
- Other DNR Land
- Municipal Boundary



Map 3d, Appendix 3, Attachment D

ALIGNMENT ALTERNATIVE AA9
Cole Lake/Riverton Region
Northland Reliability Project

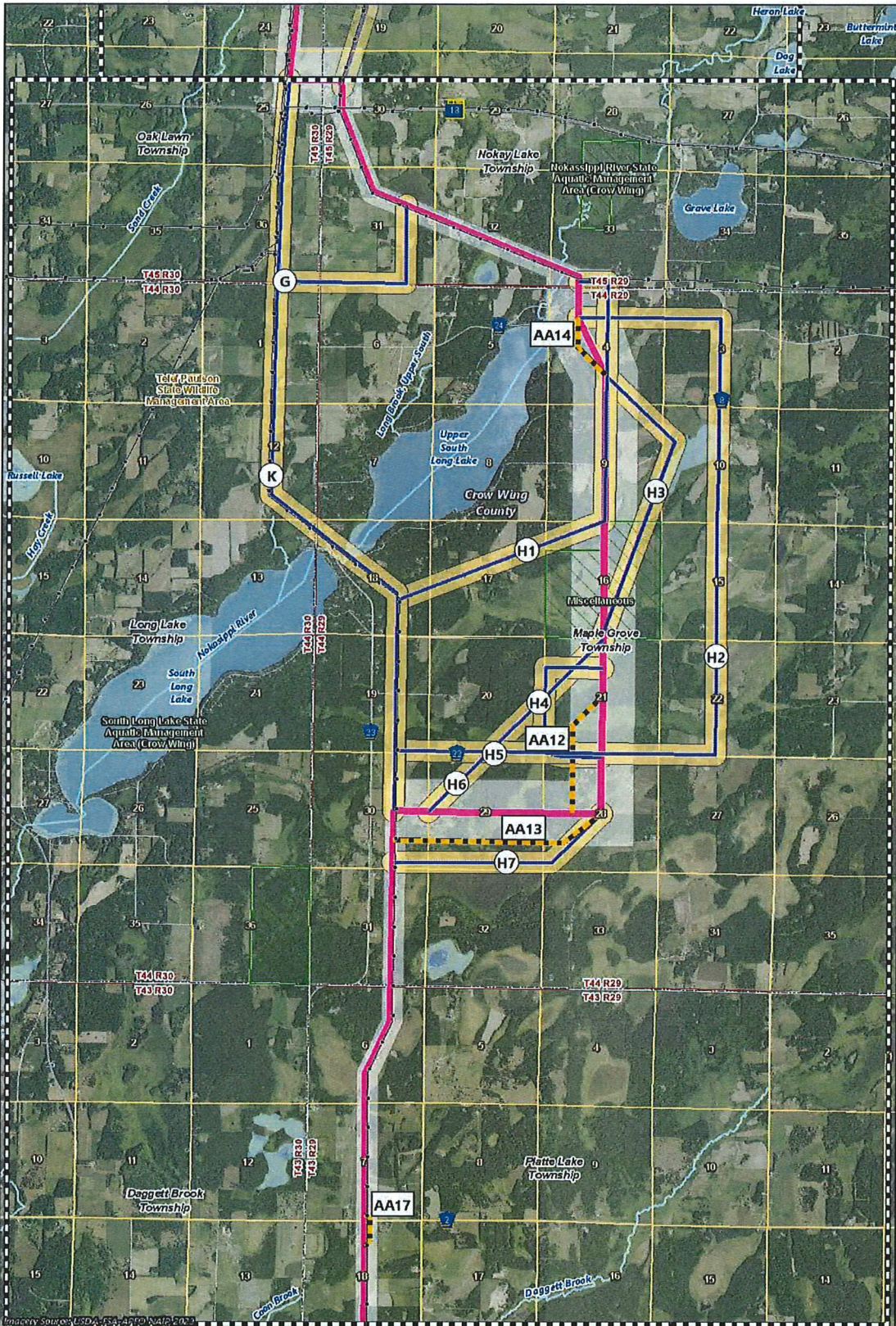


- Applicants' Modified Route
- Applicants' Proposed Route
- Route Width
- Route Alternative
- Alignment Alternative
- Route Alternative Width
- Existing Transmission Line
- Residence
- PWI Basin



Map 3e, Appendix 3, Attachment D

ALIGNMENT ALTERNATIVE AA10
 Cole Lake/Riverton Region Northland
 Reliability Project

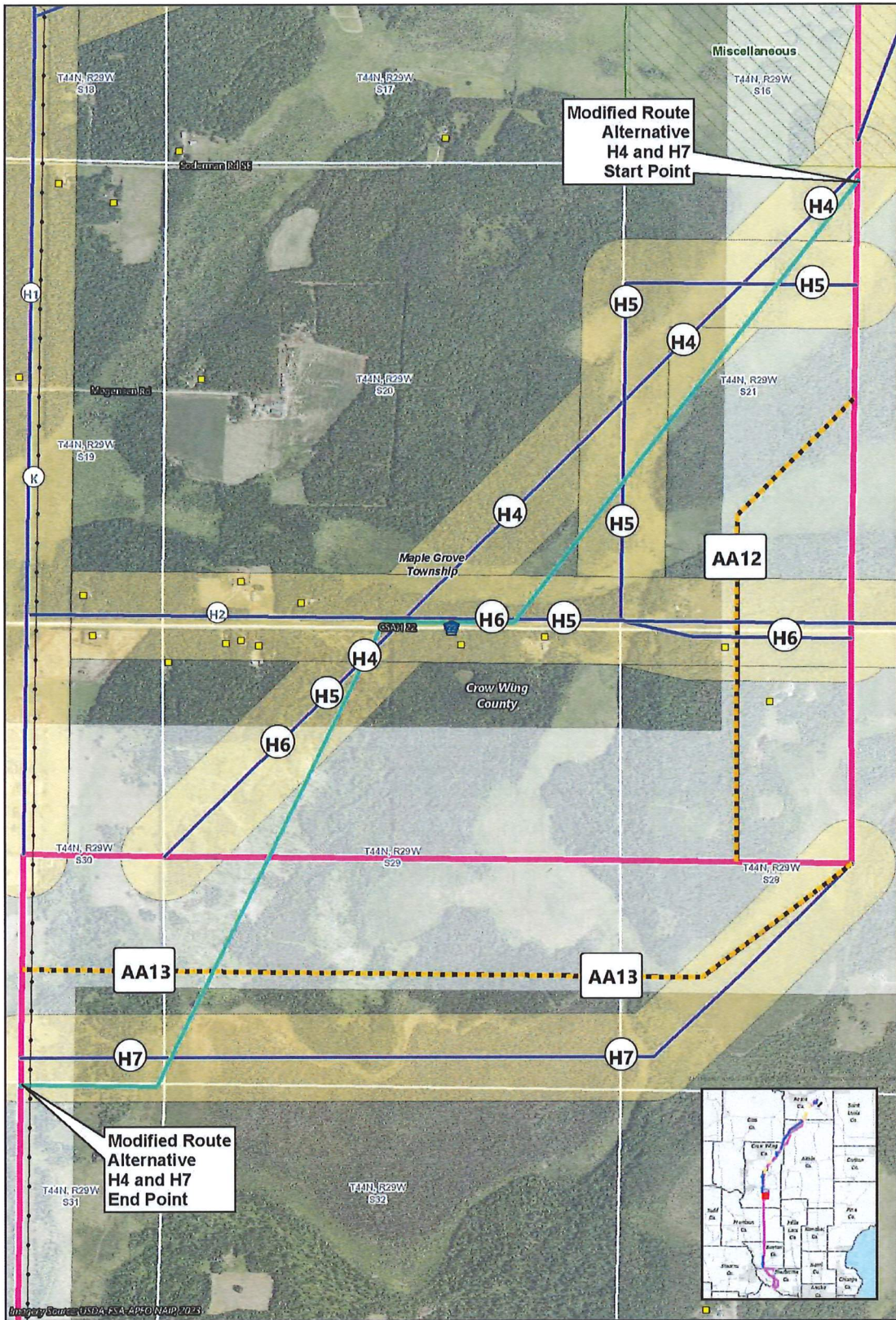


- Applicants' Proposed Route
- Route Width
- Route Alternative
- Alignment Alternative
- Route Alternative Width
- Existing Transmission Line
- PWI Waterway
- PWI Basin
- Region Boundary

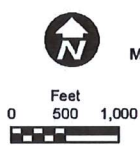


Map 4a, Appendix #, Attachment D

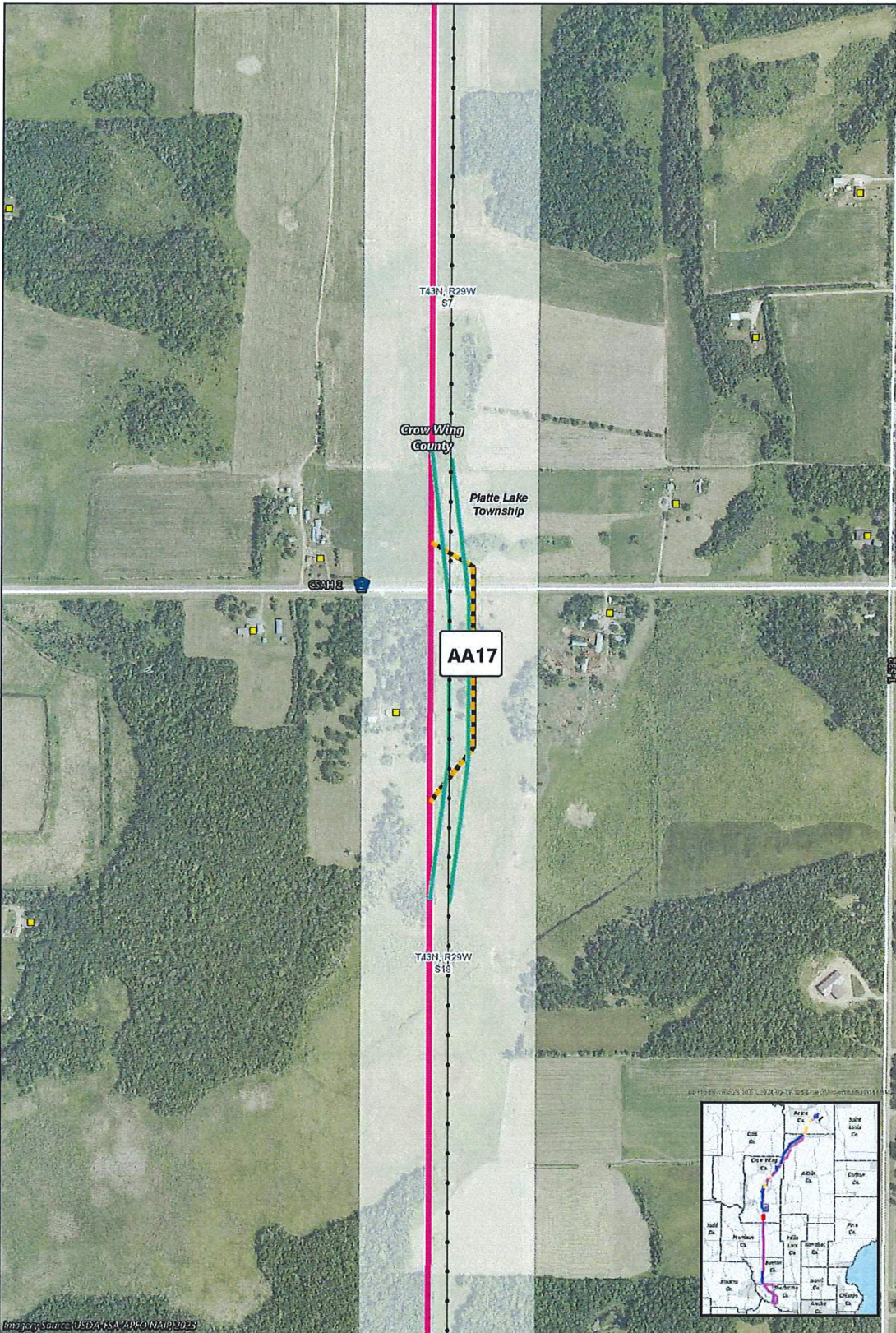
LONG LAKE REGION Northland Reliability Project



- Applicants' Modified Route
- Applicants' Proposed Route
- Route Width
- Route Alternative
- Alignment Alternative
- Route Alternative Width
- Existing Transmission Line
- Residence
- Other DNR Land



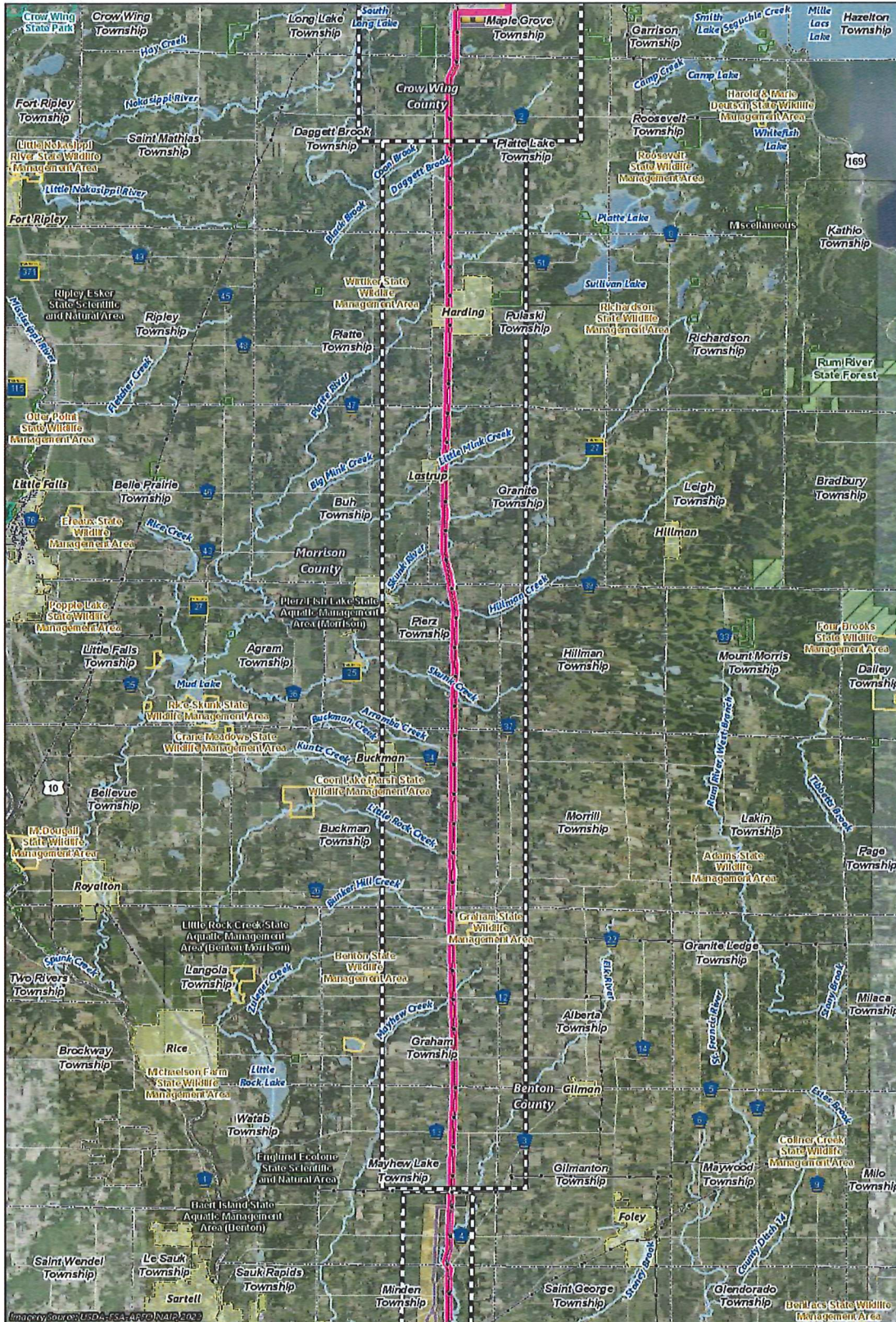
Map 4b, Appendix 3, Attachment D
MODIFIED ROUTE ALTERNATIVE H4 AND H7
 Long Lake Region
 Northland Reliability Project














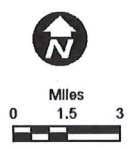
- Applicants' Modified Route
- Applicants' Proposed Route
- Route Width
- Route Alternative
- Alignment Alternative
- Route Alternative Width
- Existing Transmission Line
- Residence



Map 4c, Appendix 3, Attachment D
MODIFIED ALIGNMENT ALTERNATIVE AA17
Long Lake Region
Northland Reliability Project

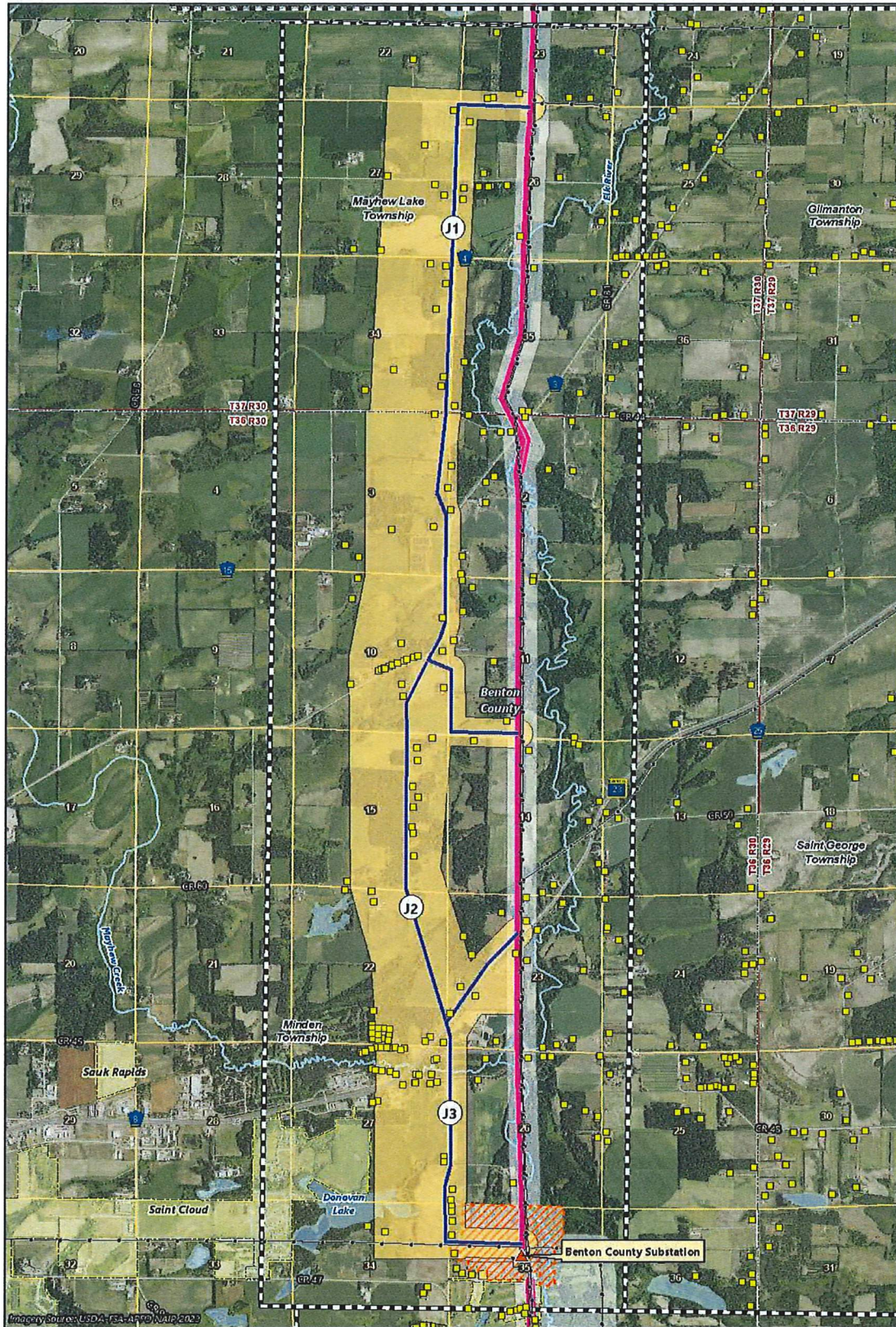


-  Applicants' Proposed Route
-  Route Width
-  Route Alternative
-  Alignment Alternative
-  Route Alternative Width
-  Existing Transmission Line
-  PWI Waterway
-  PWI Basin
-  State Forest
-  Municipal Boundary
-  Region Boundary



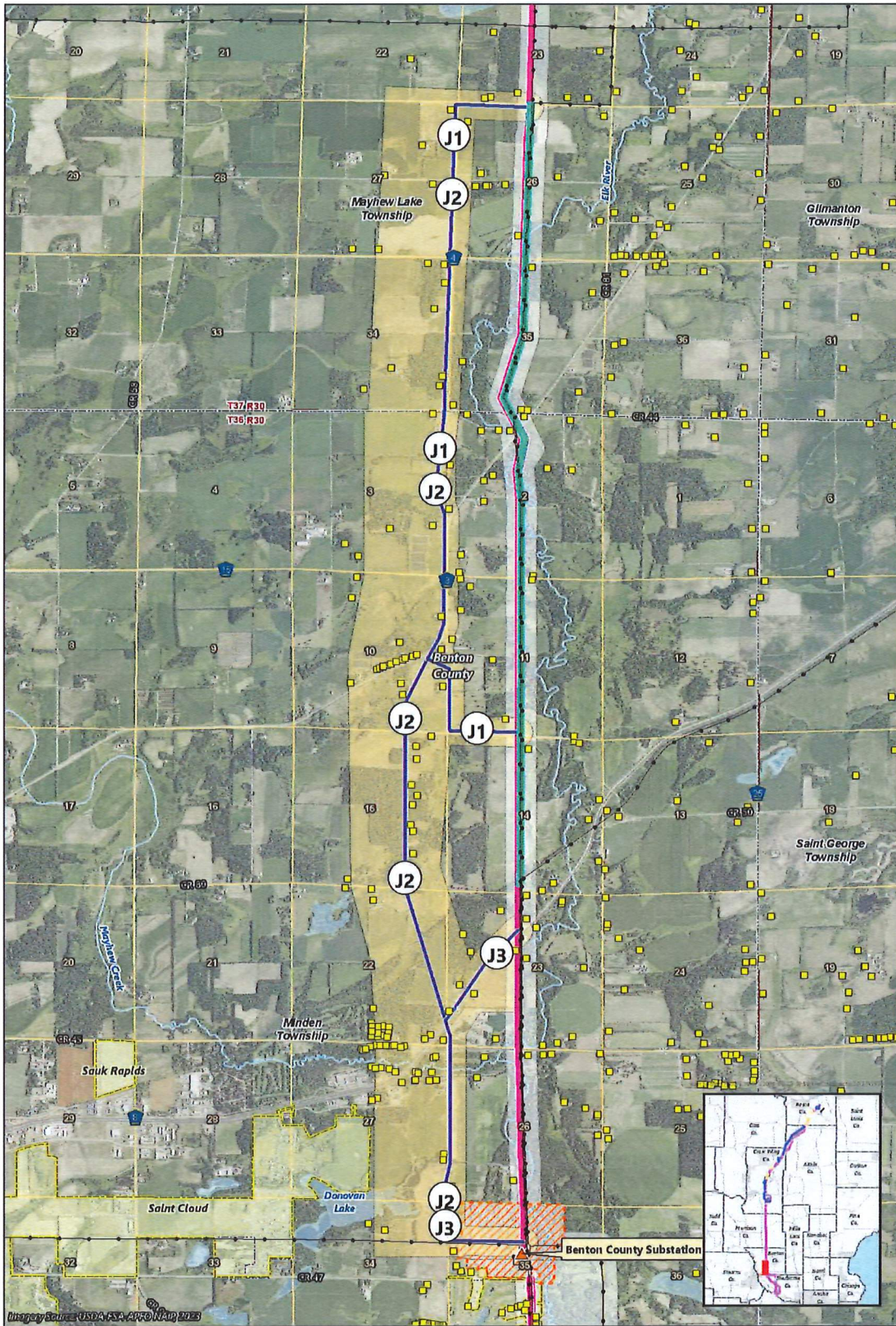
Map 5, Appendix 3, Attachment D

MORRISON COUNTY REGION
Northland Reliability Project



Map 6a, Appendix 3, Attachment D
BENTON COUNTY ELK RIVER REGION
 Northland Reliability Project



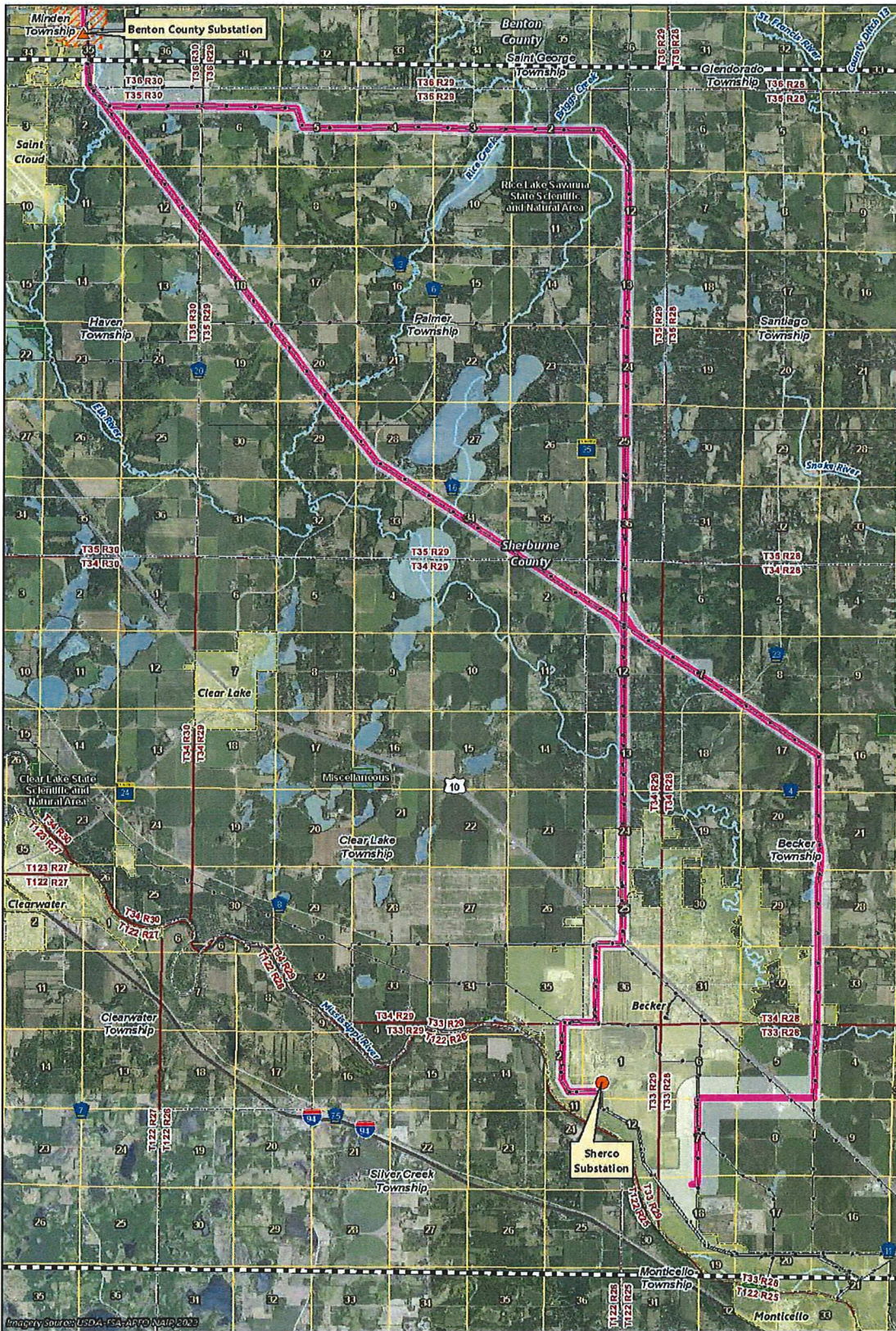


- Applicants' Modified Route
- Applicants' Proposed Route
- Route Width
- Route Alternative
- Alignment Alternative
- Route Alternative Width
- Existing Transmission Line
- Benton County Substation
- Substation Siting Area
- Residence
- PWI Waterway
- PWI Basin
- Municipal Boundary

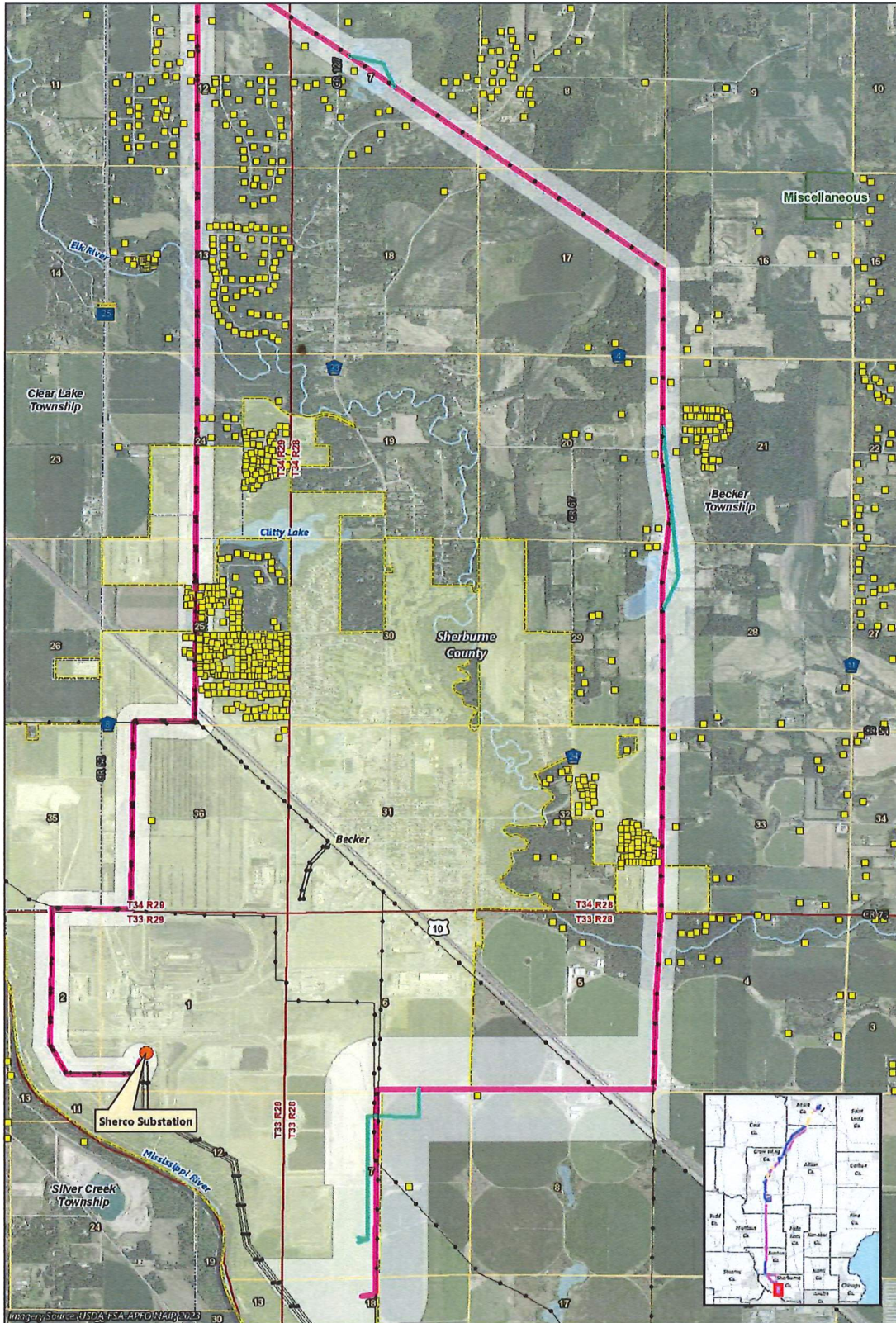


Map 6b, Appendix 3, Attachment D

ELK RIVER ALIGNMENT ALTERNATIVE
 Benton County Elk River Region
 Northland Reliability Project



Map 7, Appendix 3, Attachment D
SHERBURNE COUNTY REGION
 Northland Reliability Project



- | | | |
|----------------------------|----------------------------|--------------------|
| Applicants' Modified Route | Existing Transmission Line | Other DNR Land |
| Route Width | Sherco Substation | Municipal Boundary |
| Route Alternative | Residence | |
| Alignment Alternative | PWI Waterway | |
| Route Alternative Width | PWI Basin | |



Map 7a, Appendix 3, Attachment D

SHERCO SOLAR SUBSTATION ALIGNMENT
 Sherburne County Region
 Northland Reliability Project

