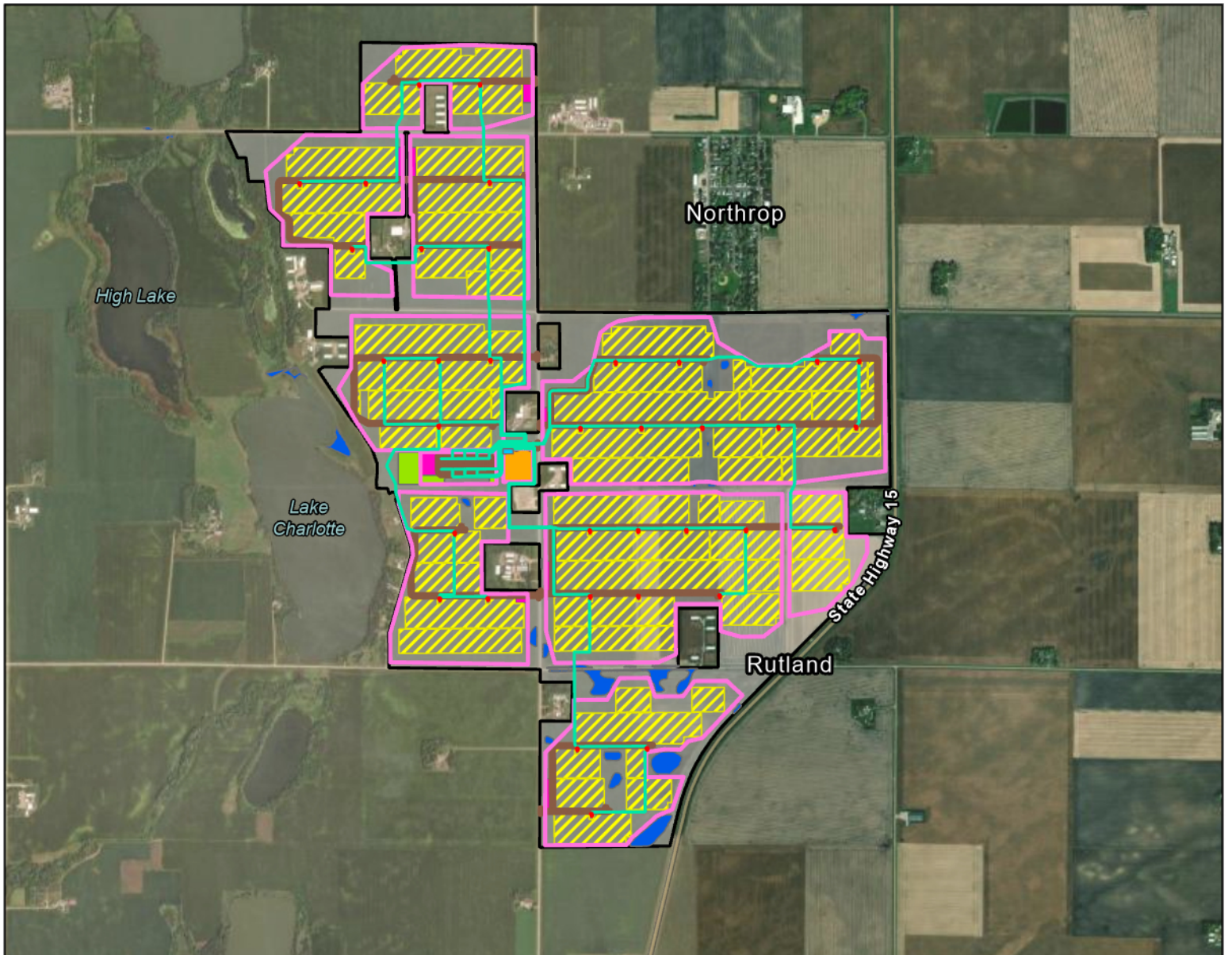


## Appendix B

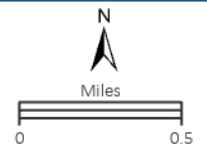
### Maps

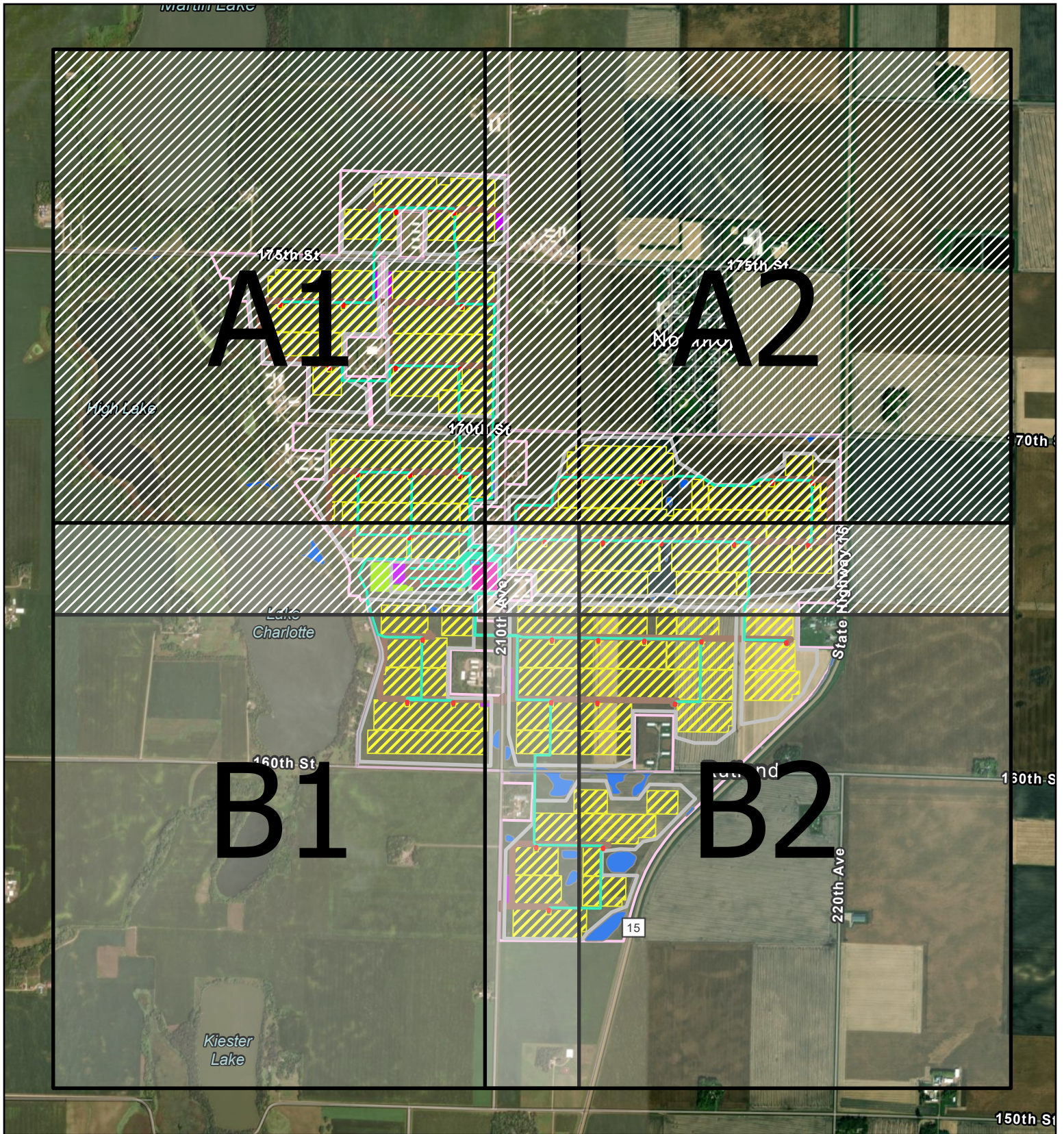


Lake Charlotte Solar Project Overview



- |                   |                  |                     |
|-------------------|------------------|---------------------|
| Land Control Area | Collection Lines | Substation          |
| Project Fence     | Inverters        | Laydown Yard        |
| Solar Arrays      | O&M Building     | Delineated Wetlands |
| BESS              | Access Roads     |                     |





Lake Charlotte Solar Project Detail Map - Cover Page



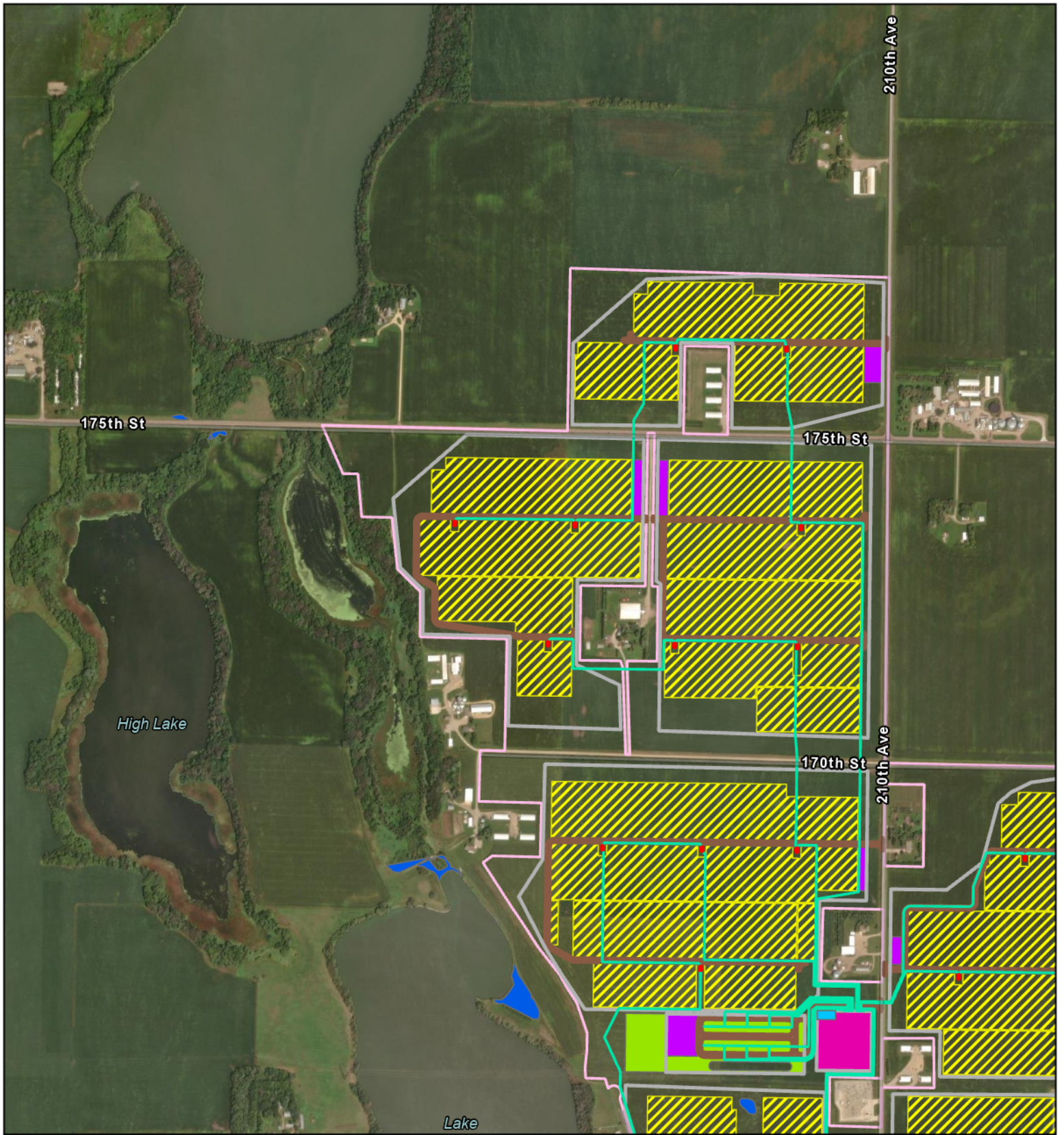
- |                   |                     |
|-------------------|---------------------|
| Land Control Area | O&M Building        |
| Project Fence     | Access Roads        |
| Solar Arrays      | Substation          |
| BESS              | Laydown Yard        |
| Inverters         | Delineated Wetlands |
| Collection Lines  |                     |

N

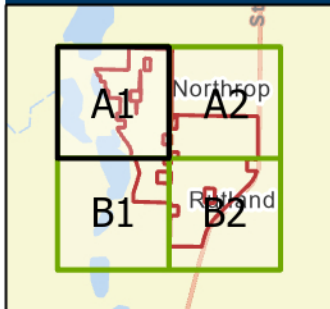
MILES












0 0.25 0.5

**mn MINNESOTA**  
PUBLIC UTILITIES COMMISSION




Lake Charlotte Solar Project Detail Map | A1

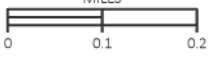


- |   |   |
|---|---|
|  Land Control Area |  O&M Building        |
|  Project Fence     |  Access Roads        |
|  Solar Arrays      |  Substation          |
|  BESS              |  Laydown Yard        |
|  Inverters         |  Delineated Wetlands |
|  Collection Lines  |   |

N

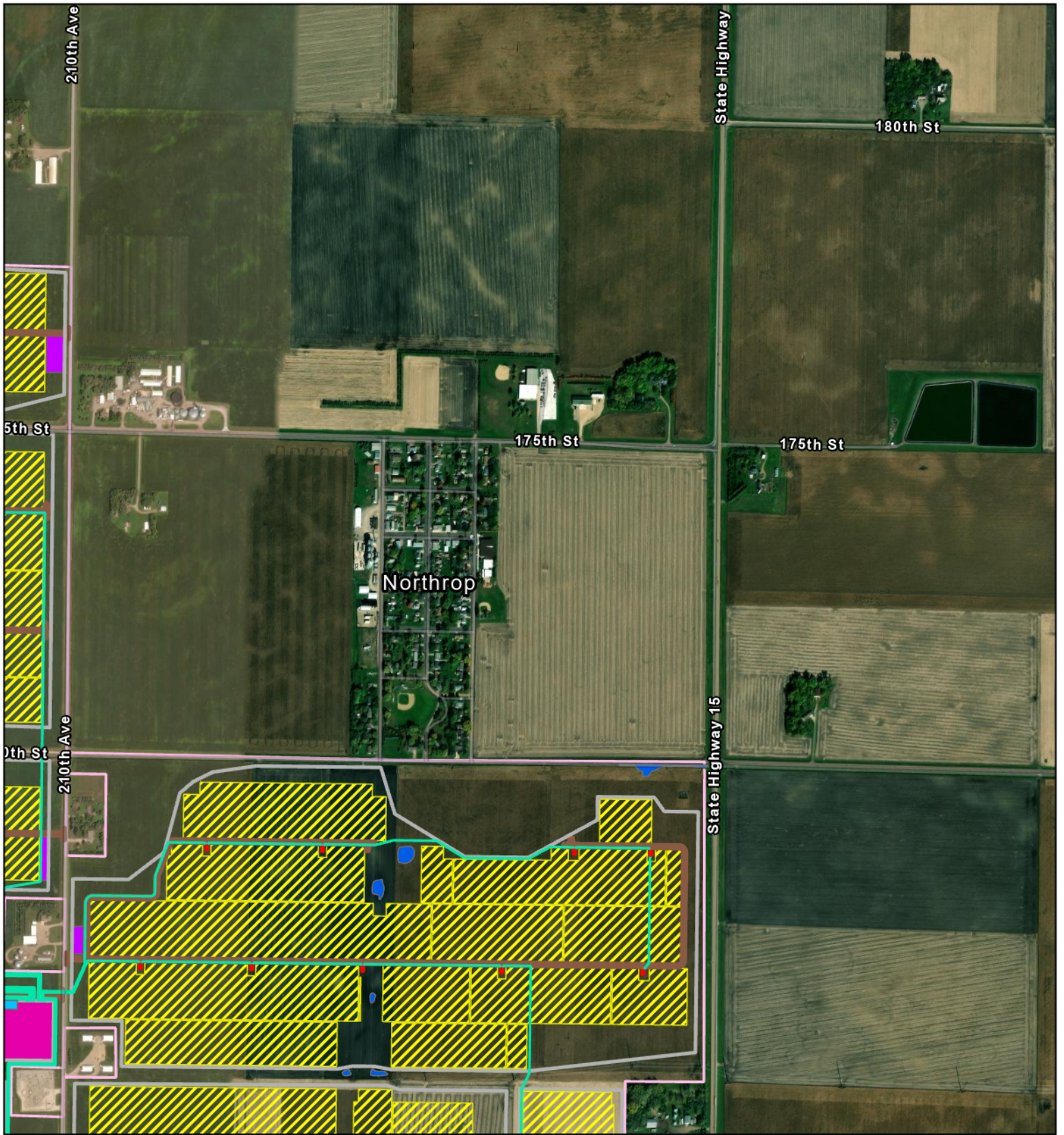


MILES

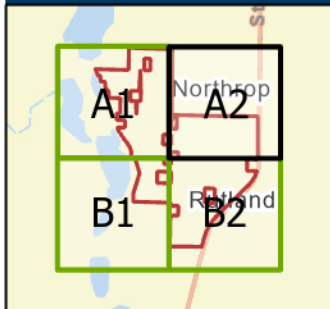













0 0.1 0.2

**MINNESOTA**  
PUBLIC UTILITIES COMMISSION




Lake Charlotte Solar Project Detail Map | A2

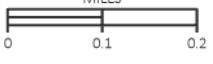


- |   |   |
|---|---|
|  Land Control Area |  O&M Building        |
|  Project Fence     |  Access Roads        |
|  Solar Arrays      |  Substation          |
|  BESS              |  Laydown Yard        |
|  Inverters         |  Delineated Wetlands |
|  Collection Lines  |   |

N

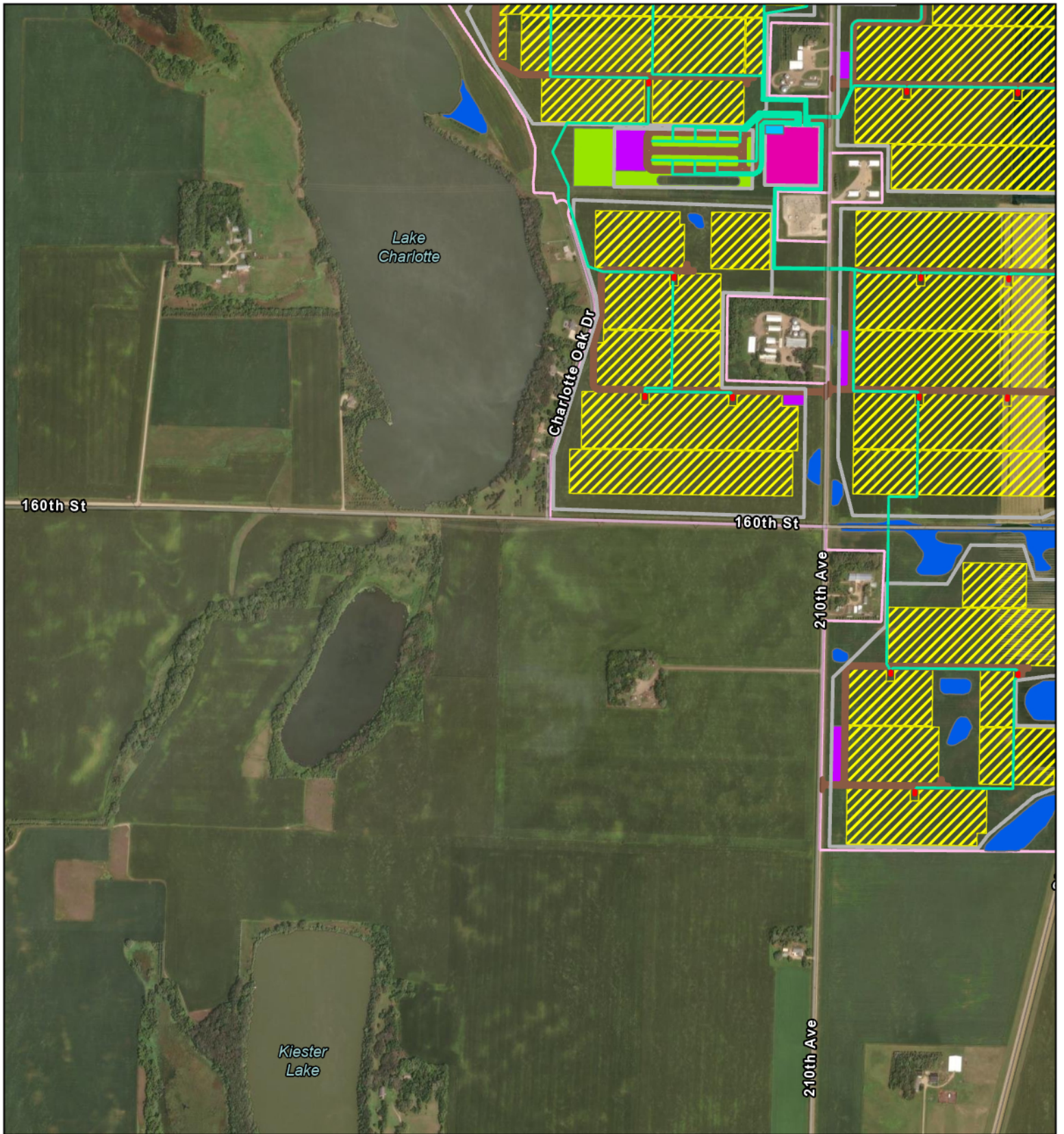


MILES

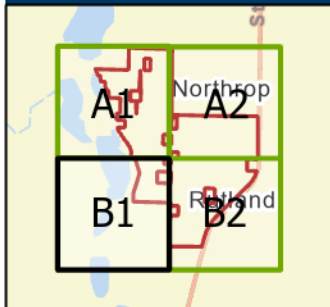













0 0.1 0.2

**mn** MINNESOTA  
PUBLIC UTILITIES COMMISSION




Lake Charlotte Solar Project Detail Map | B1

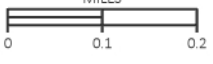


- |   |   |
|---|---|
|  Land Control Area |  Access Roads        |
|  Project Fence     |  O&M Building        |
|  Solar Arrays      |  Substation          |
|  BESS              |  Laydown Yard        |
|  Inverters         |  Delineated Wetlands |
|  Collection Lines  |   |

N

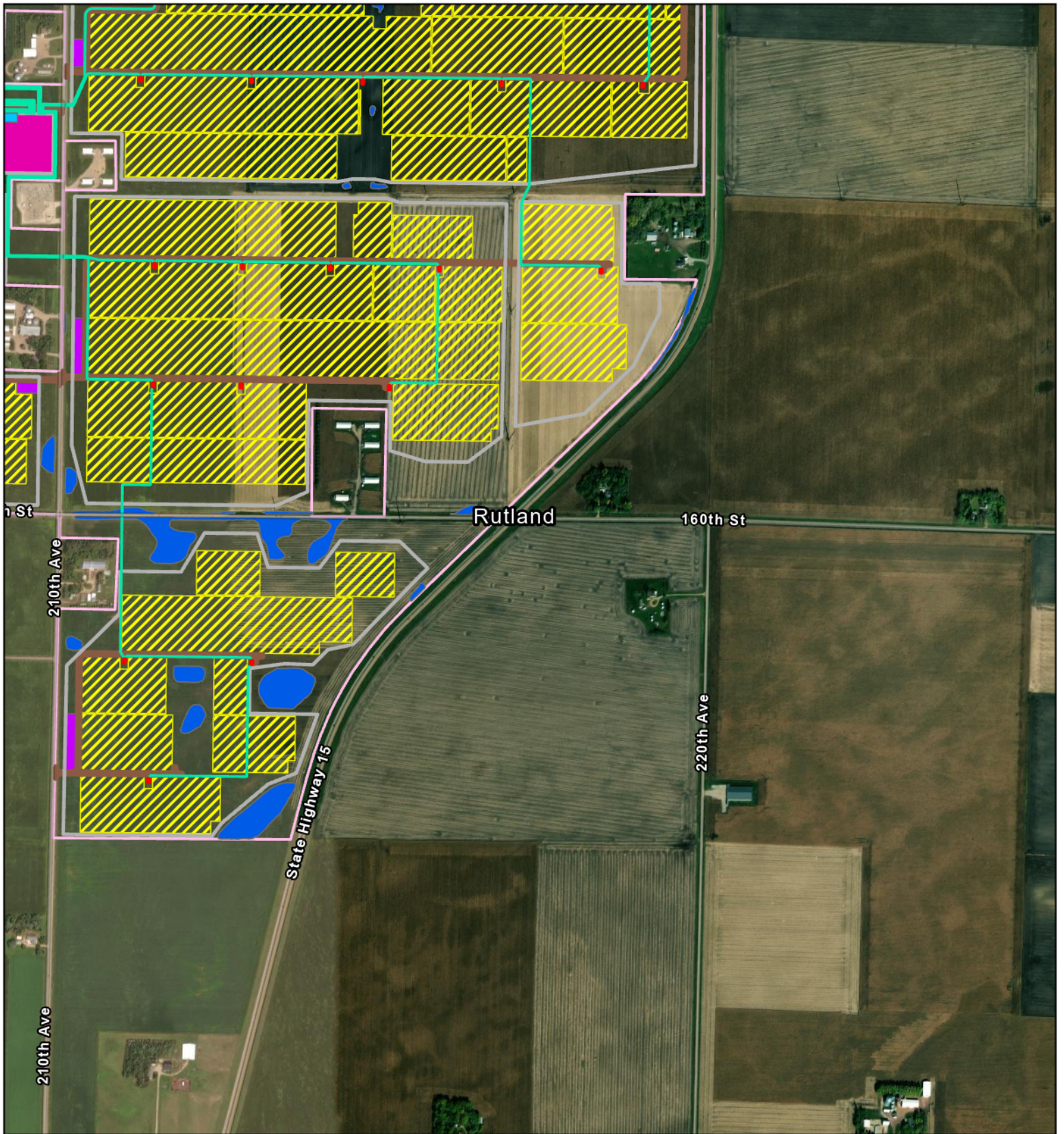


MILES

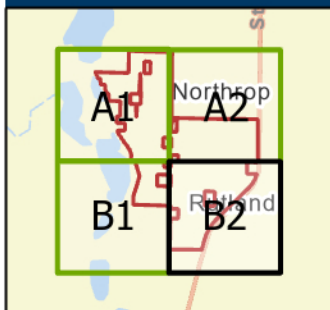













0 0.1 0.2

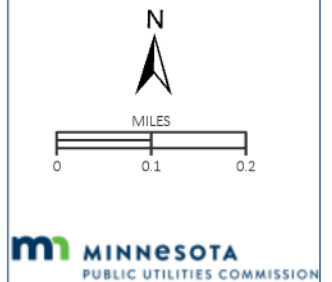
**MINNESOTA**  
PUBLIC UTILITIES COMMISSION

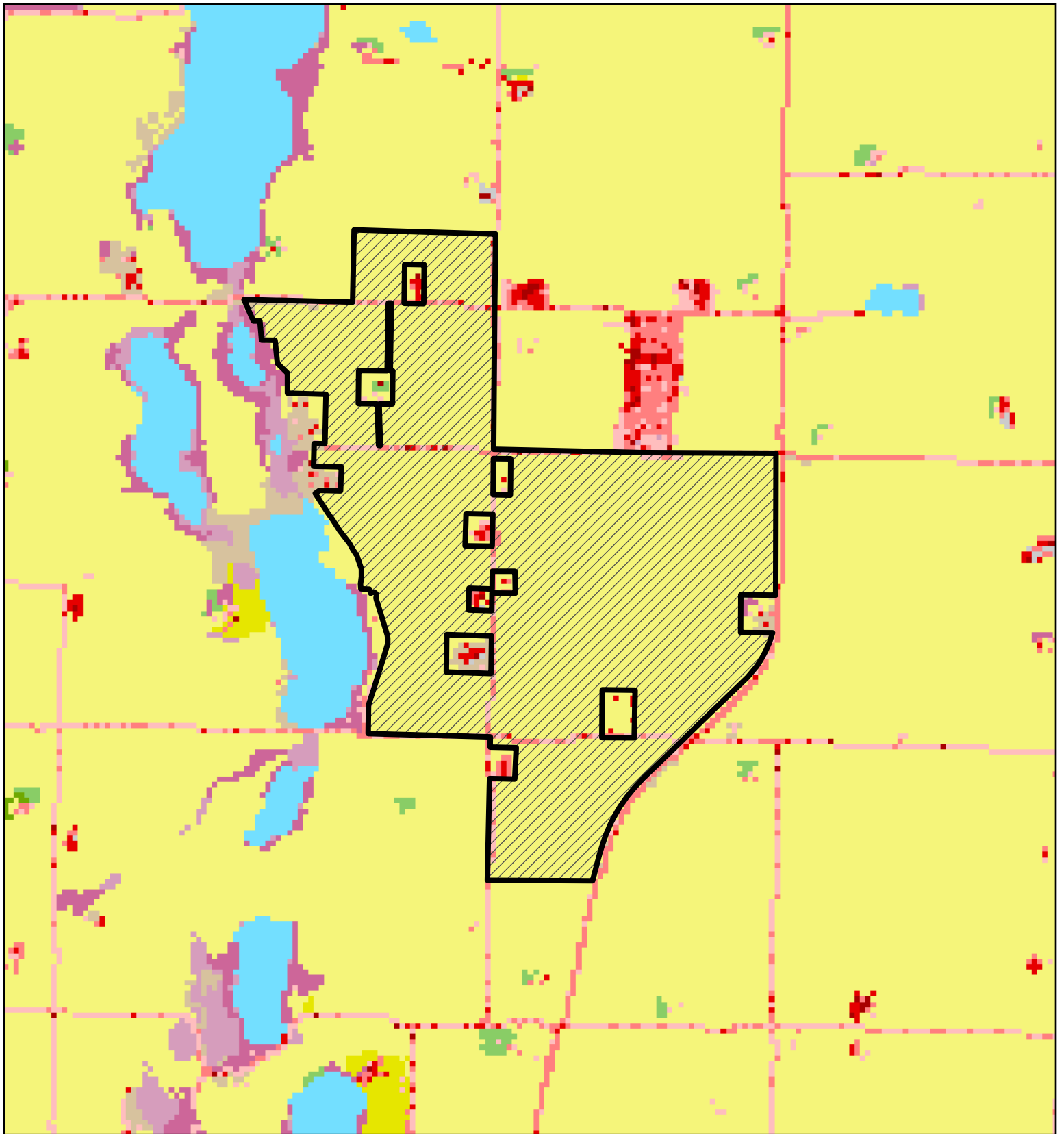


Lake Charlotte Solar Project Detail Map | B2


















- |   |   |
|---|---|
|  Land Control Area |  O&M Building        |
|  Project Fence     |  Access Roads        |
|  Solar Arrays      |  Substation          |
|  BESS              |  Laydown Yard        |
|  Inverters         |  Delineated Wetlands |
|  Collection Lines  |   |






Lake Charlotte Solar Project - Land Cover Map

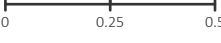


- |  |  |
|--|--|
|  Land Control Area            |  Deciduous Forest             |
|  NLCD - Land Cover            |  Mixed Forest                 |
|  Open Water                   |  Grassland/Herbaceous         |
|  Developed, Open Space        |  Pasture/Hay                  |
|  Developed, Low Intensity     |  Cultivated Crops             |
|  Developed, Medium Intensity  |  Woody Wetlands               |
|  Developed, High Intensity    |  Emergent Herbaceous Wetlands |
|  Barren Land (Rock/Sand/Clay) |  |


N

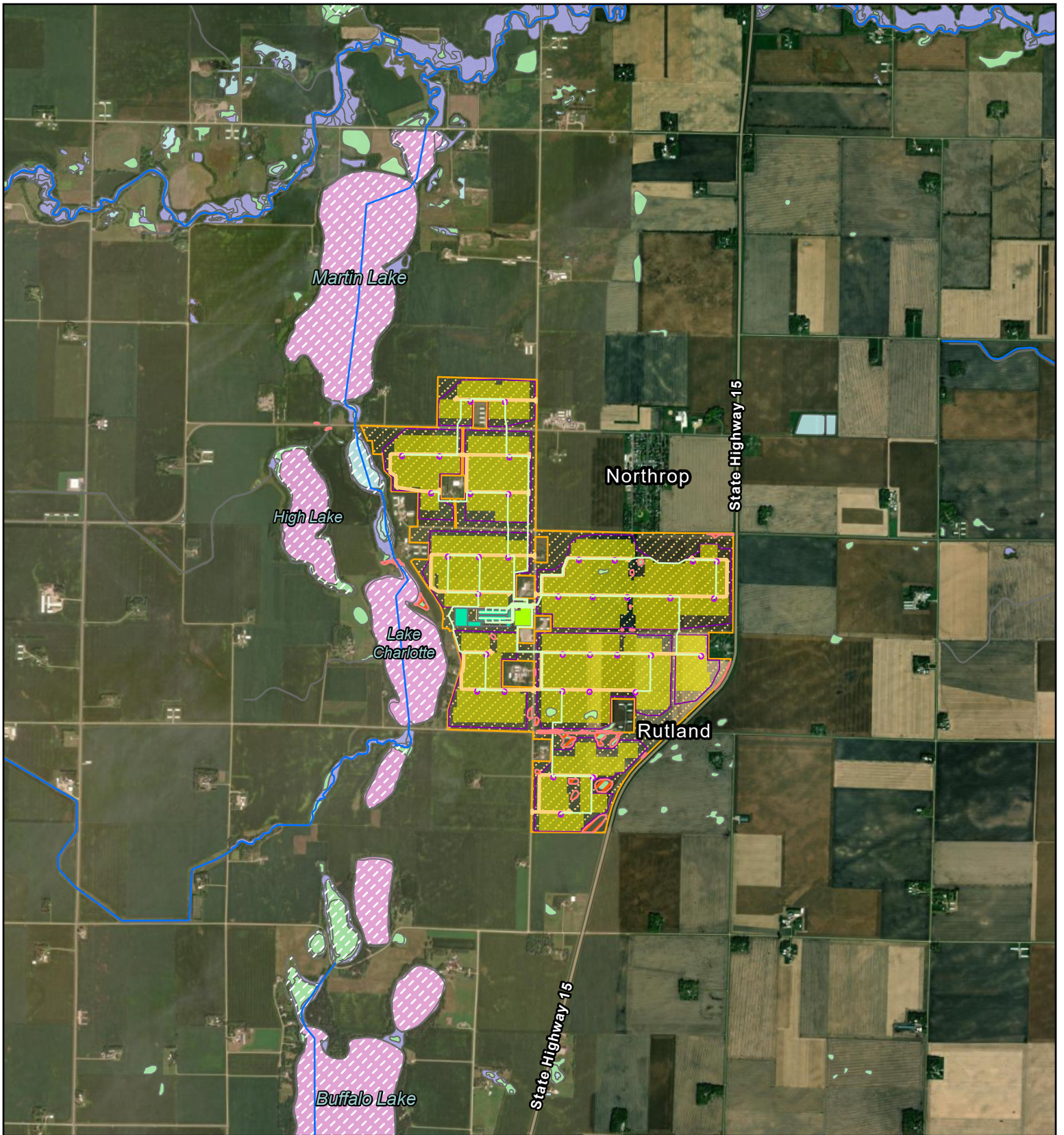


MILES



0 0.25 0.5

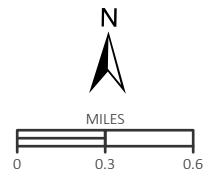


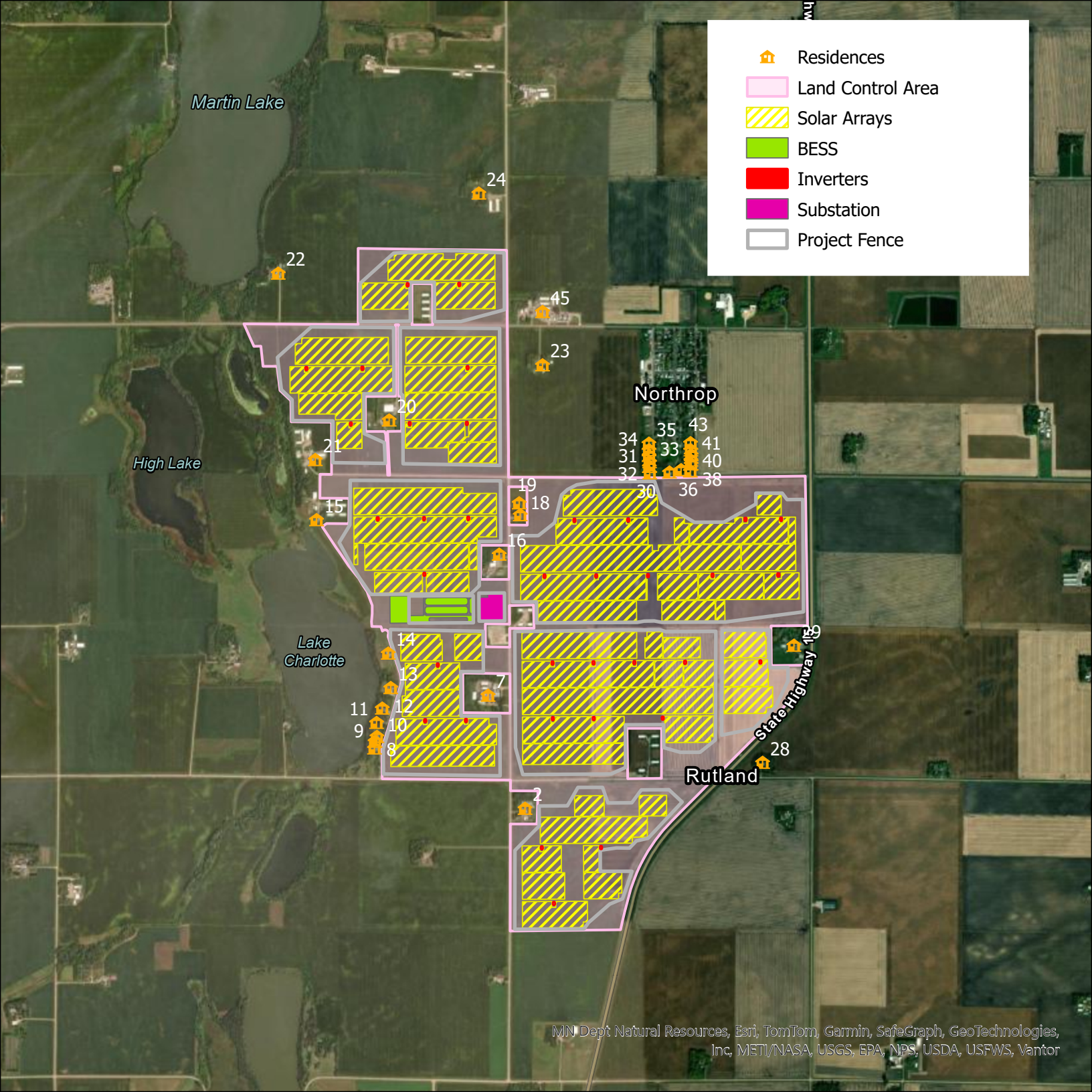



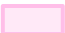





## Lake Charlotte Solar Project - Water Resources Map

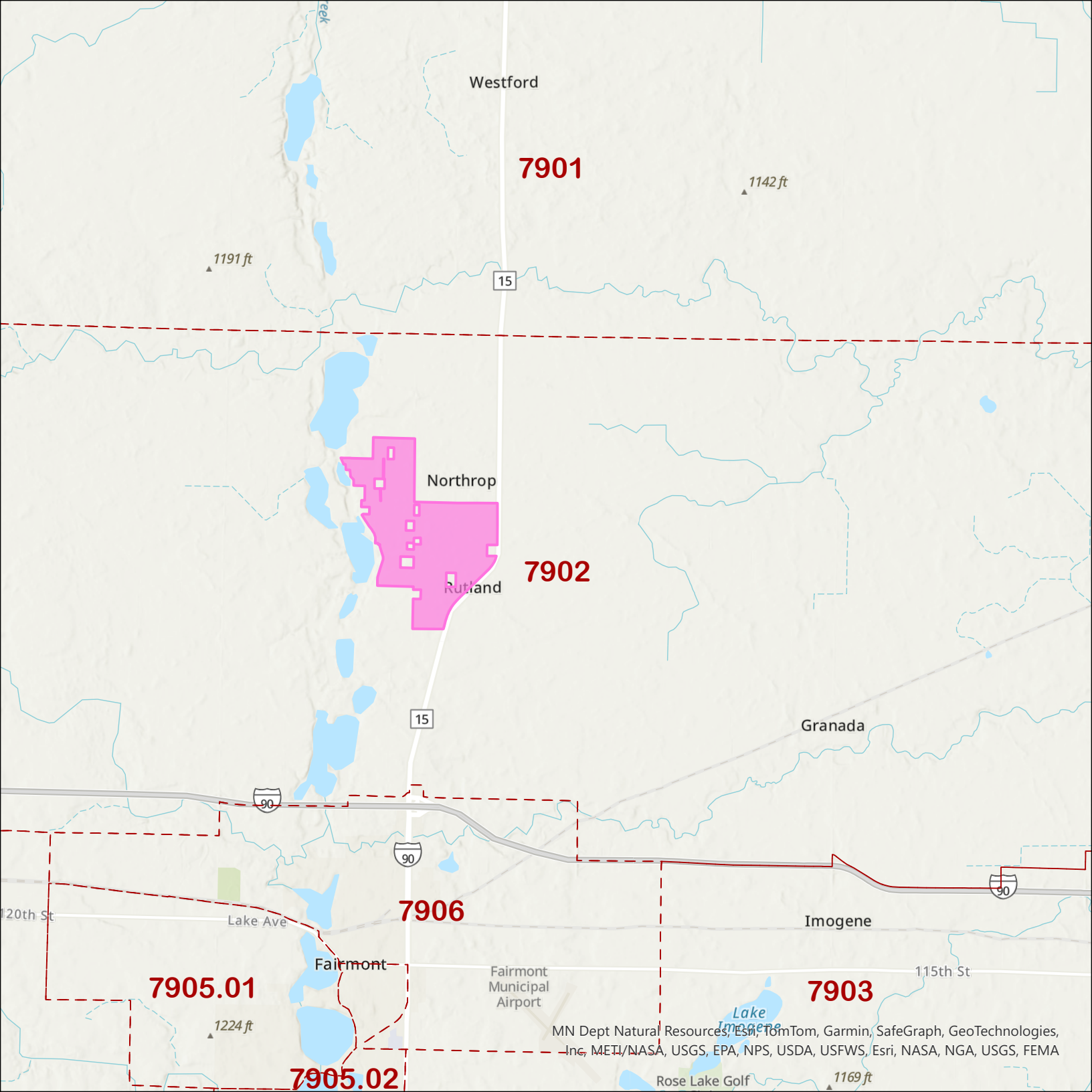


Land Control Area	Access Roads	Freshwater Forested/ Shrub Wetland
Project Fence	Project Substation	Freshwater Pond
Solar Array	Public Waters	Lake
Collector Lines	Public Watercourse	Riverine
Delineated Wetlands	NWI Wetlands	
Inverters	Freshwater Emergent Wetland	
BESS		





-  Residences
-  Land Control Area
-  Solar Arrays
-  BESS
-  Inverters
-  Substation
-  Project Fence



Westford

7901

▲ 1142 ft

▲ 1191 ft

15

Northrop

7902

Rutland

15

Granada

90

90

90

20th St

Lake Ave

7906

Imogene

7905.01

Fairmont

Fairmont  
Municipal  
Airport

7903

115th St

▲ 1224 ft

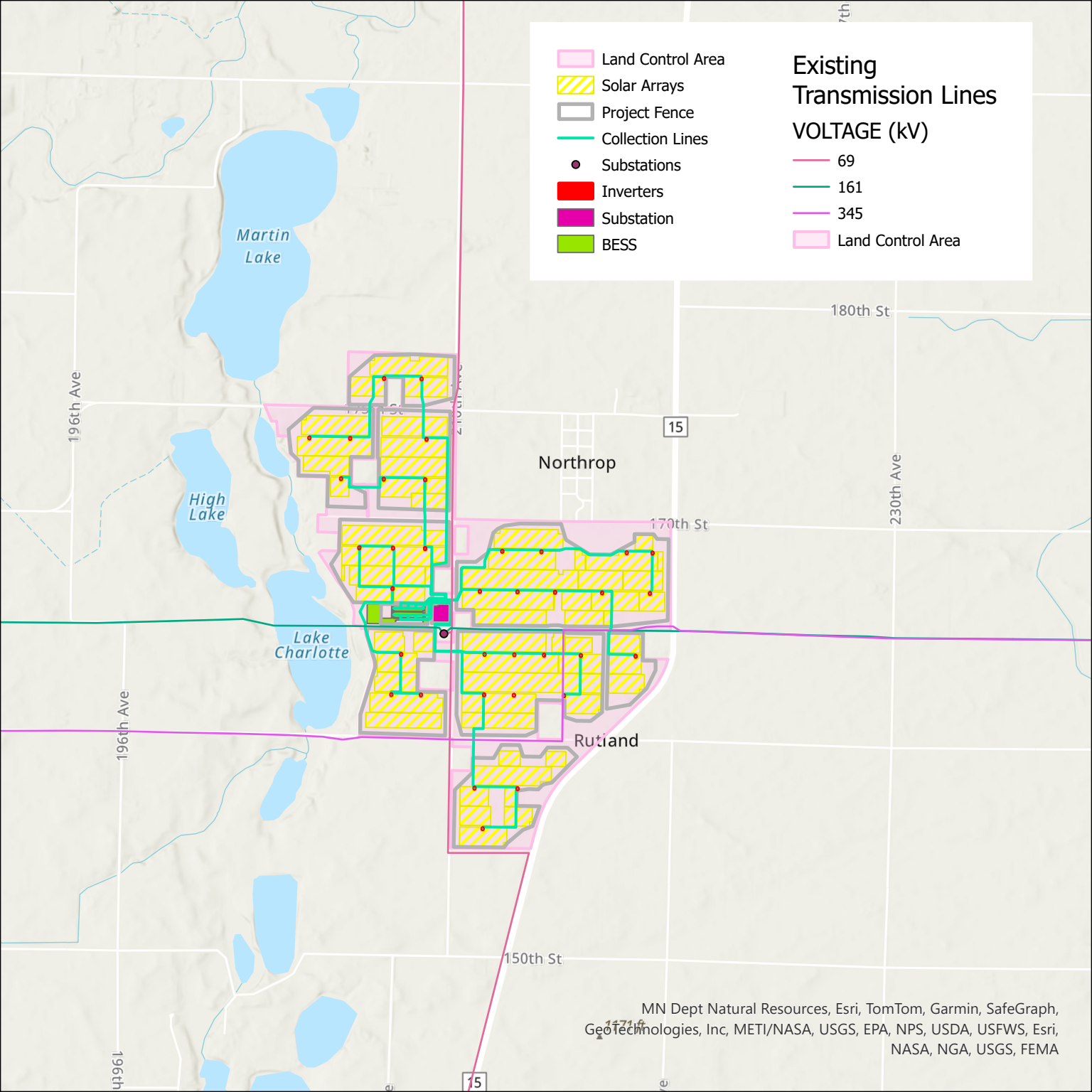
MN Dept Natural Resources, Esri, TomTom, Garmin, SafeGraph, GeoTechnologies,  
Inc, METI/NASA, USGS, EPA, NPS, USDA, USFWS, Esri, NASA, NGA, USGS, FEMA





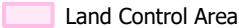







7905.02

Rose Lake Golf

▲ 1169 ft

Lake  
Imogene



	Land Control Area	<h3>Existing Transmission Lines</h3> <p><b>VOLTAGE (kV)</b></p> <ul style="list-style-type: none"> <li> 69</li> <li> 161</li> <li> 345</li> <li> Land Control Area</li> </ul>
	Solar Arrays	
	Project Fence	
	Collection Lines	
	Substations	
	Inverters	
	Substation	
	BEES	