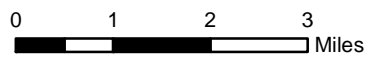
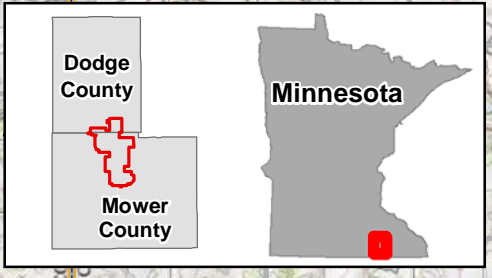
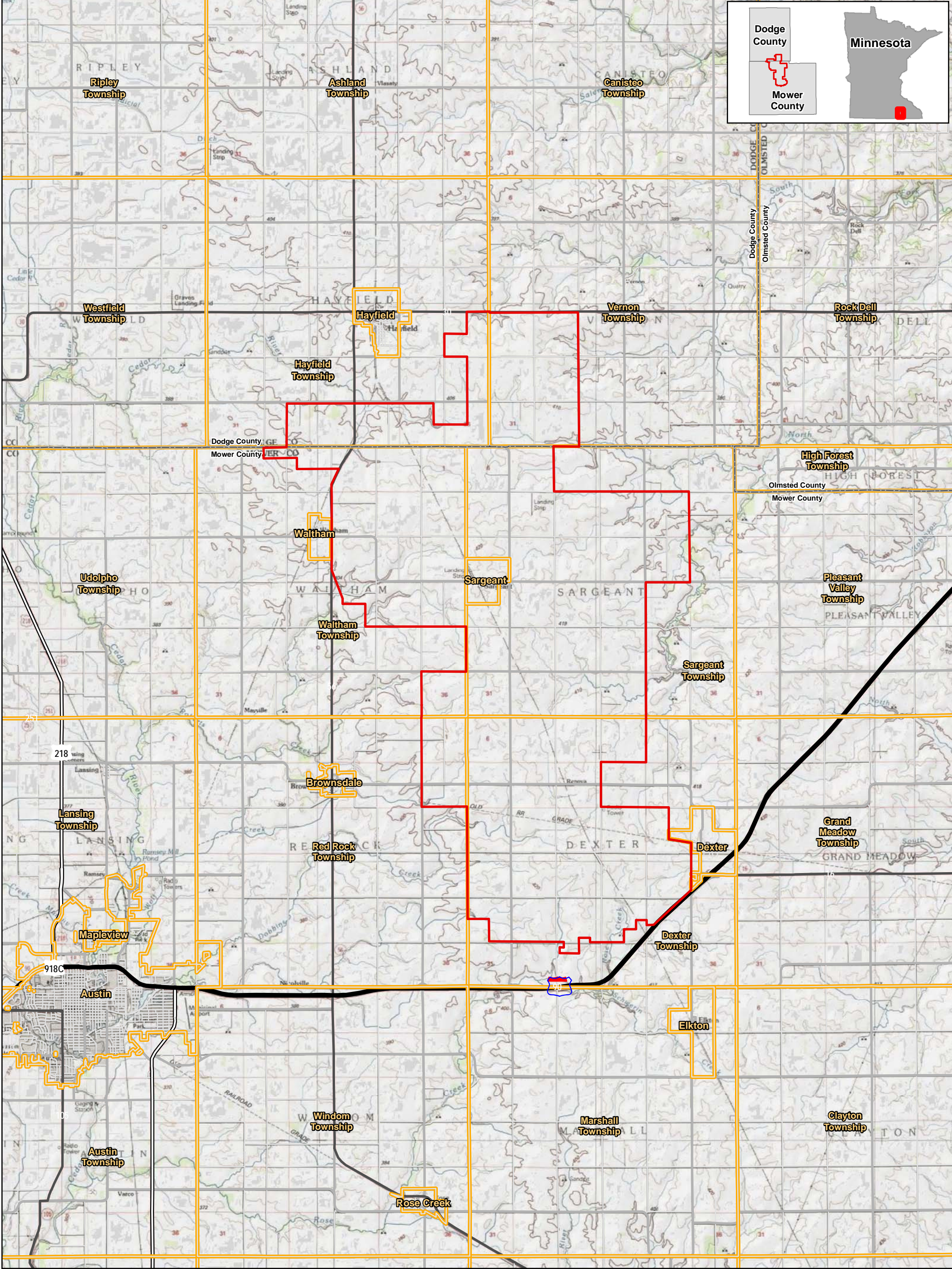


Figures



1:125,000

Figure 1
Project Location
Pleasant Valley Wind Farm
Repower Project

Mower and Dodge Counties, Minnesota

- Project Boundary
- City/Township
- County Boundary

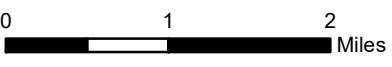
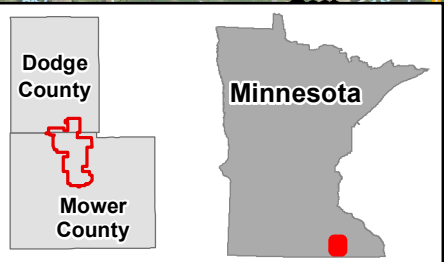
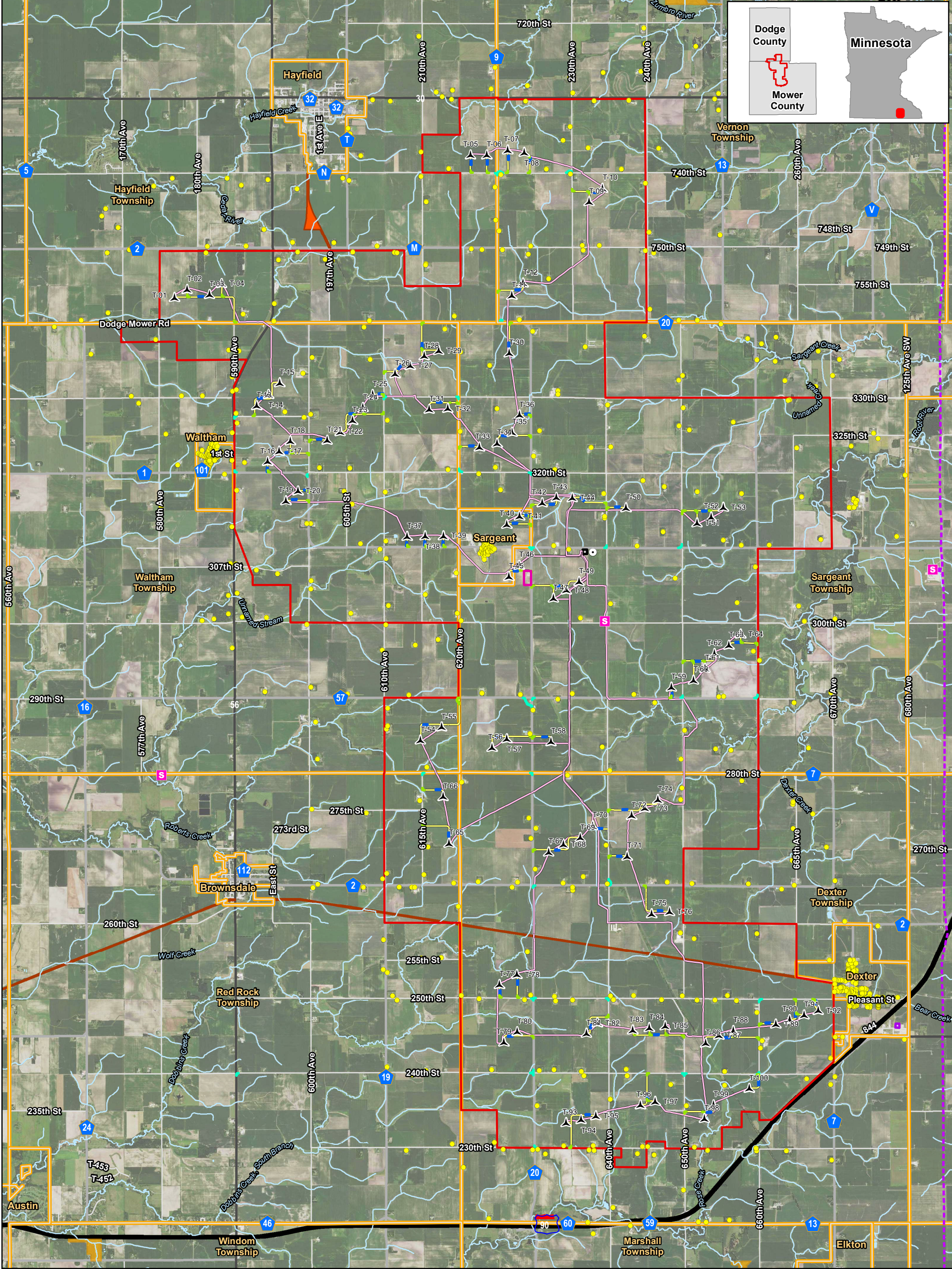


Figure 2
Project Area and Facilities
Pleasant Valley Wind Farm
Repower Project
Mower and Dodge Counties, Minnesota

- Turbine (110m rotor diameter)
- Residential Structure (within 1 mile of Project Boundary)
- Permanent Met Tower
- Dairyland Coop Substation
- Access Road
- Collection Line
- Existing 345 kV Transmission Line
- River/Stream
- Project Boundary
- Project Substation
- O&M Area
- Laydown Area
- Access Road Improvements
- Crane Assembly Area
- Public Road Improvements
- City/Township
- Wildlife Management Area
- Scientific & Natural Area
- Lake, Pond or Reservoir

For Environmental Review Purposes Only
 Data Source: Xcel Energy, US Census, MDT, MDNR, 2019 NAIP

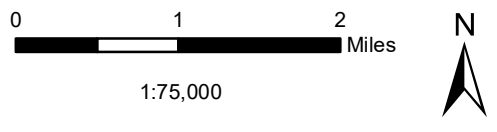
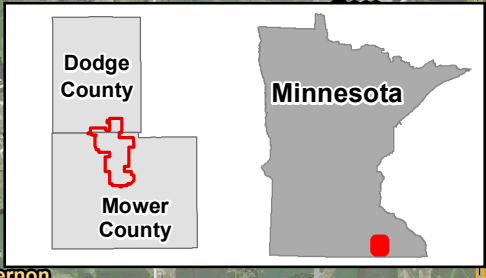
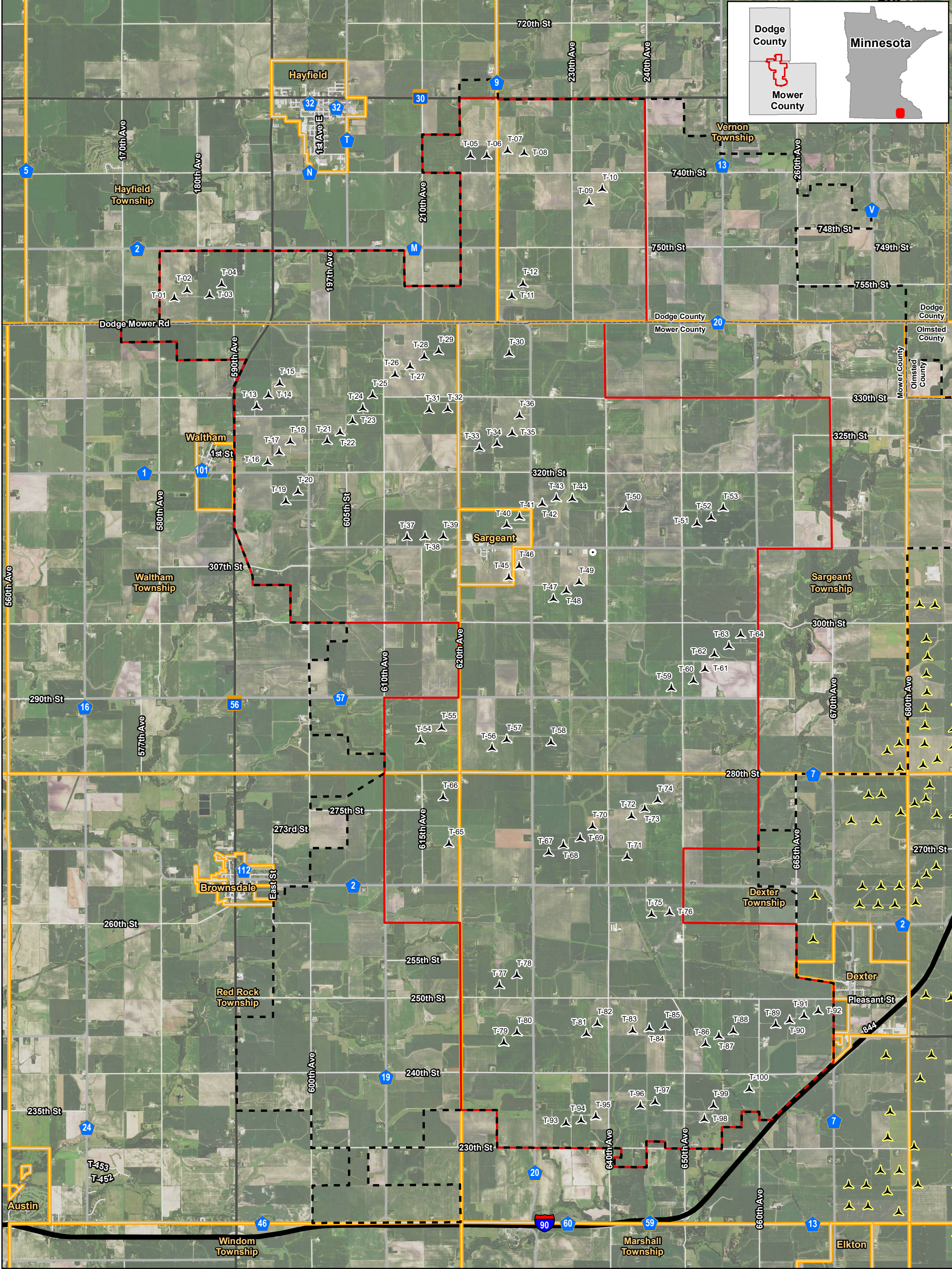


Figure 3
Project Boundary Modification
Pleasant Valley Wind Farm
Repower Project
Mower and Dodge Counties, Minnesota

- Turbine (110m rotor diameter)
- Existing Wind Project
- Permanent Met Tower
- Proposed Project Boundary
- 2014 Project Boundary
- City/Township
- County Boundary

For Environmental Review Purposes Only
 Data Source: Xcel Energy, US Census, MDT, MDNR, 2019 NAIP

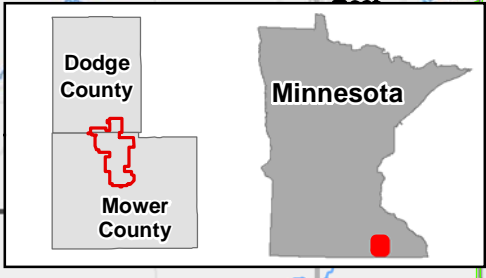
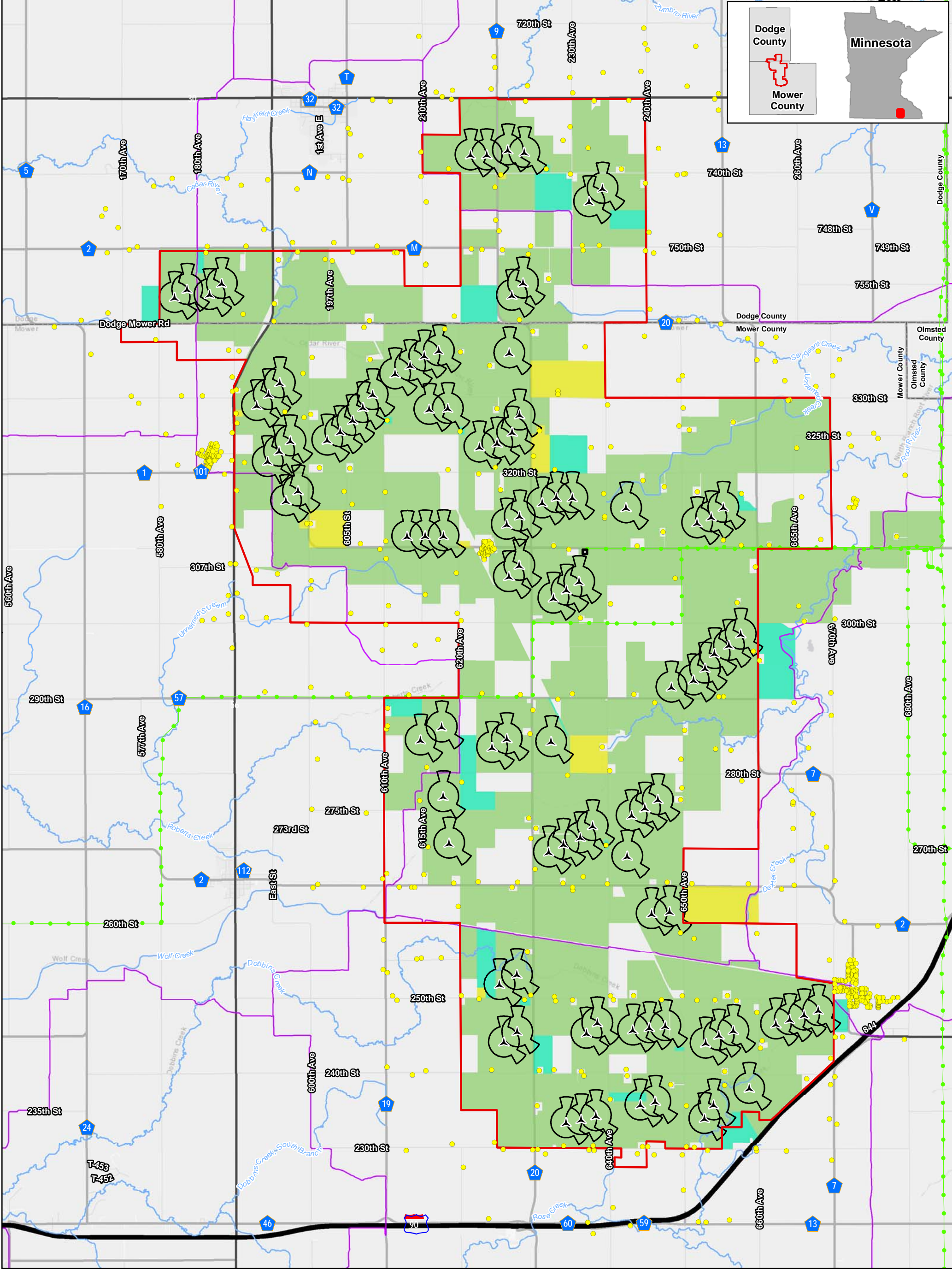


Figure 4
Wind Access Buffer Setbacks
Pleasant Valley Wind Farm
Repower Project

Mower and Dodge Counties, Minnesota

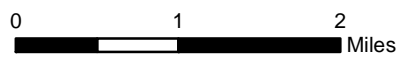
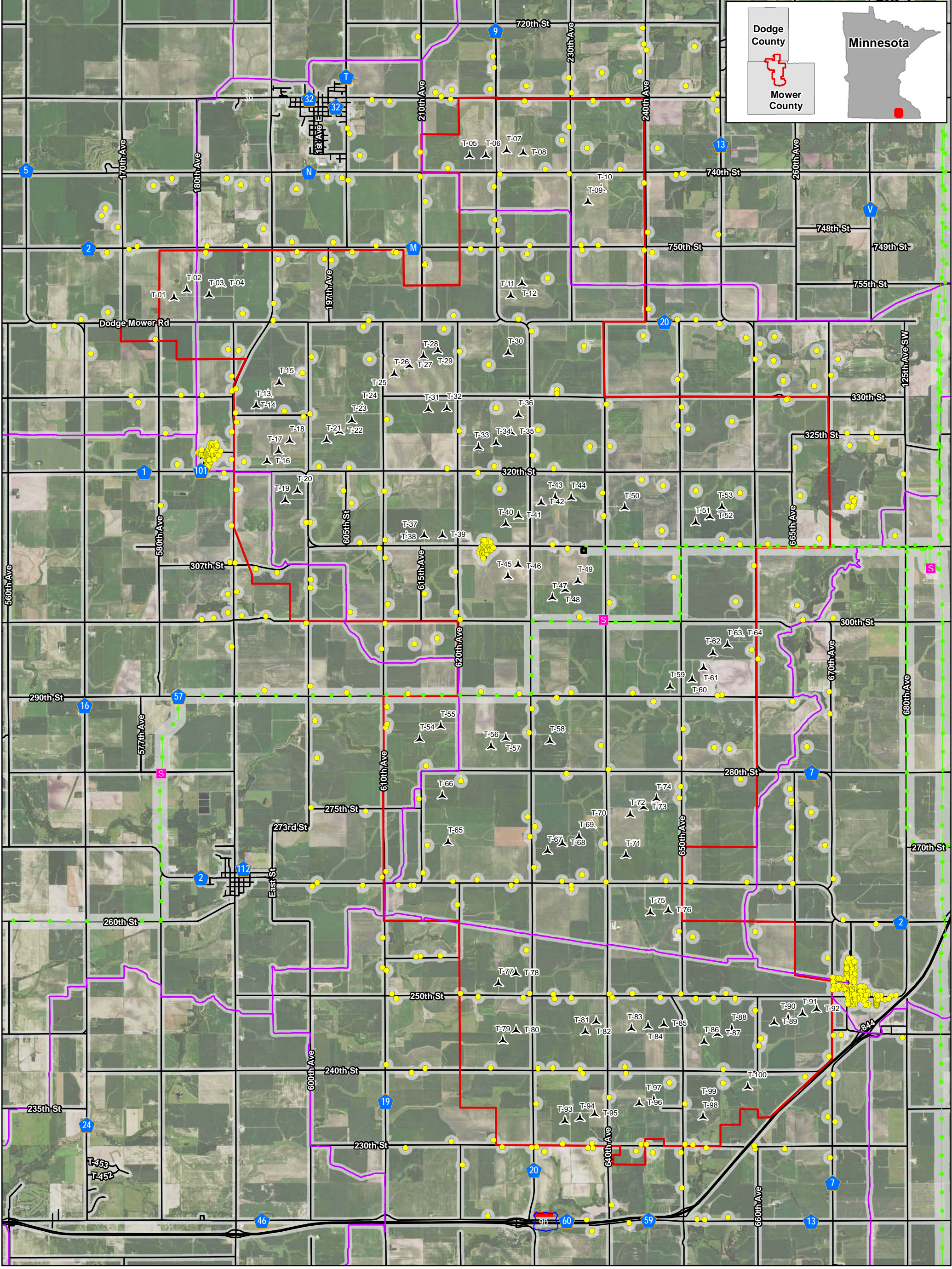
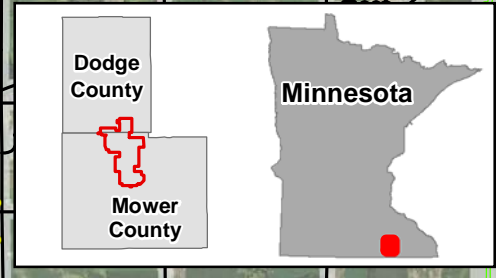
- ▲ Turbine (110m rotor diameter)
- Residential Structure (within 1 mile of Project Boundary)
- Project Boundary
- Project Substation
- Existing Lease Agreement
- Wind Rights Only (Signed)
- Wind Rights Only (In Process)
- Wind Access Buffer
- County Boundary
- Snowmobile Trail
- Existing Transmission Line
- Public Water Watercourse



0 1 2 Miles

1:75,000

For Environmental Review Purposes Only
 Data Source: Xcel Energy, US Census, MDOT, MDNR, 2019 NAIP

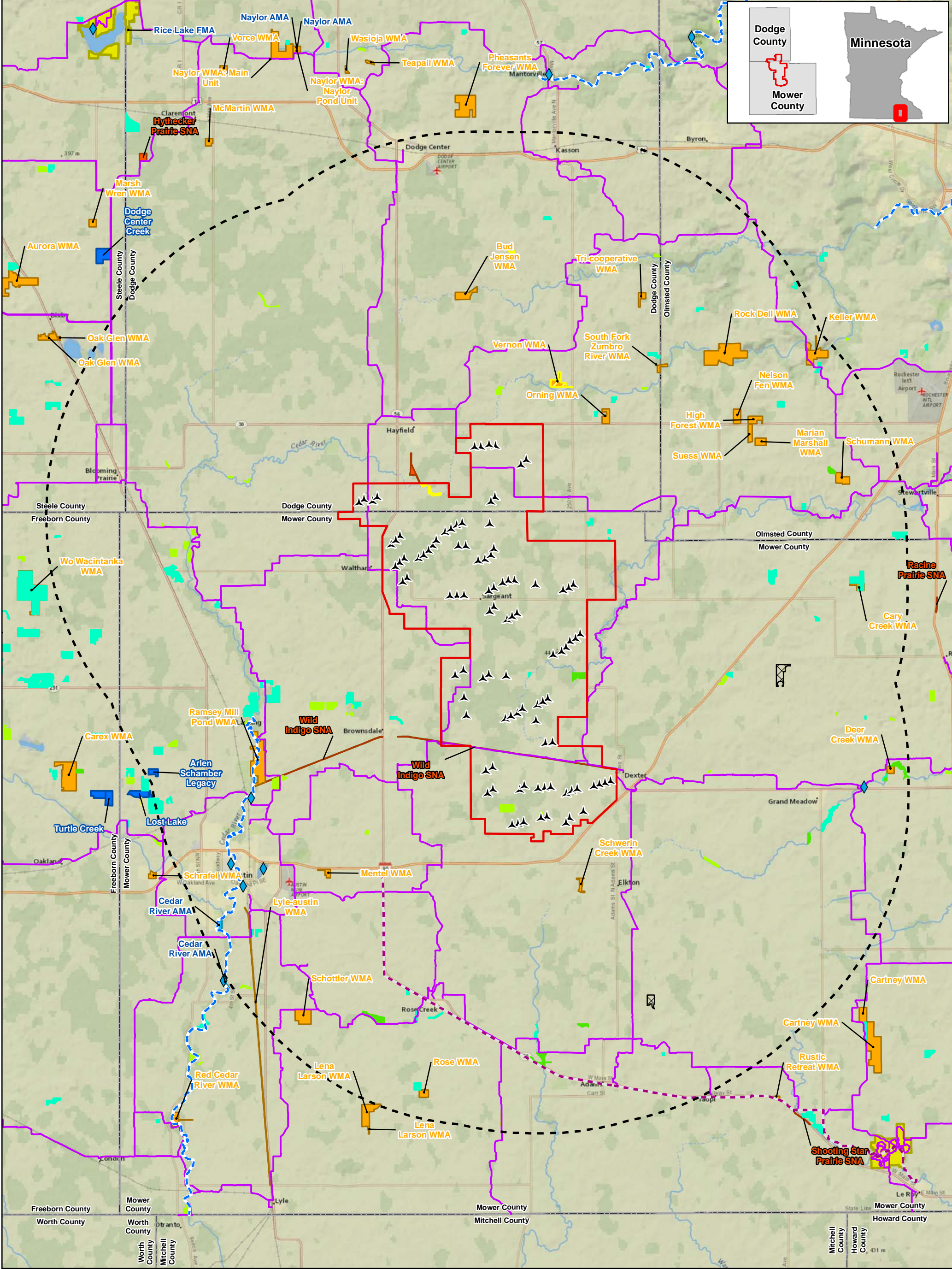


1:75,000

Figure 5
Setbacks
Pleasant Valley Wind Farm
Repower Project
Mower and Dodge Counties, Minnesota

- Turbine (110m rotor diameter)
- Residential Structure (within 1 mile of Project Boundary)
- Project Boundary
- Setback Buffer
- Existing Transmission Line
- Road
- Snowmobile Trail

For Environmental Review Purposes Only
 Data Source: Xcel Energy, US Census, MDT, MDNR, 2019 NAIP



0 1 2 3 4 5 Miles

1:192,000

For Environmental Review Purposes Only
Data Source: Xcel Energy, US Census, MDOT, MDNR, 2019 NAIP

Figure 6
Public Land Ownership and Recreation
Pleasant Valley Wind Farm
Repower Project
Mower and Dodge Counties, Minnesota

- | | |
|---------------------------------|---|
| ▲ Turbine (110m rotor diameter) | ▣ Minnesota Walk-In Hunting Access Site |
| ◆ DNR Water Access Site | ▨ US Fish and Wildlife Interest (FSA) |
| ▭ Project Boundary | ■ Waterfowl Production Area |
| - - - 10 Mile Buffer | ■ Wildlife Management Area (WMA) |
| - · - · State Trail | ■ Scientific & Natural Area (SNA) |
| - · - · State Water Trail | ■ State Park |
| - · - · Snowmobile Trail | ■ Aquatic Management Area (AMA) |
| ■ CREP Easement | ▭ County Boundary |
| ■ PWP Easement | |
| ■ RIM Easement | |

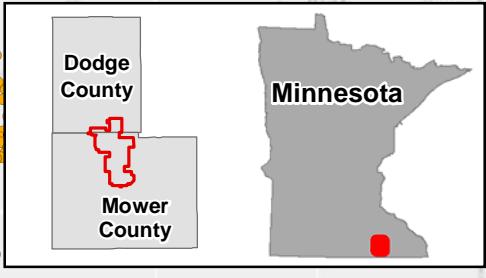
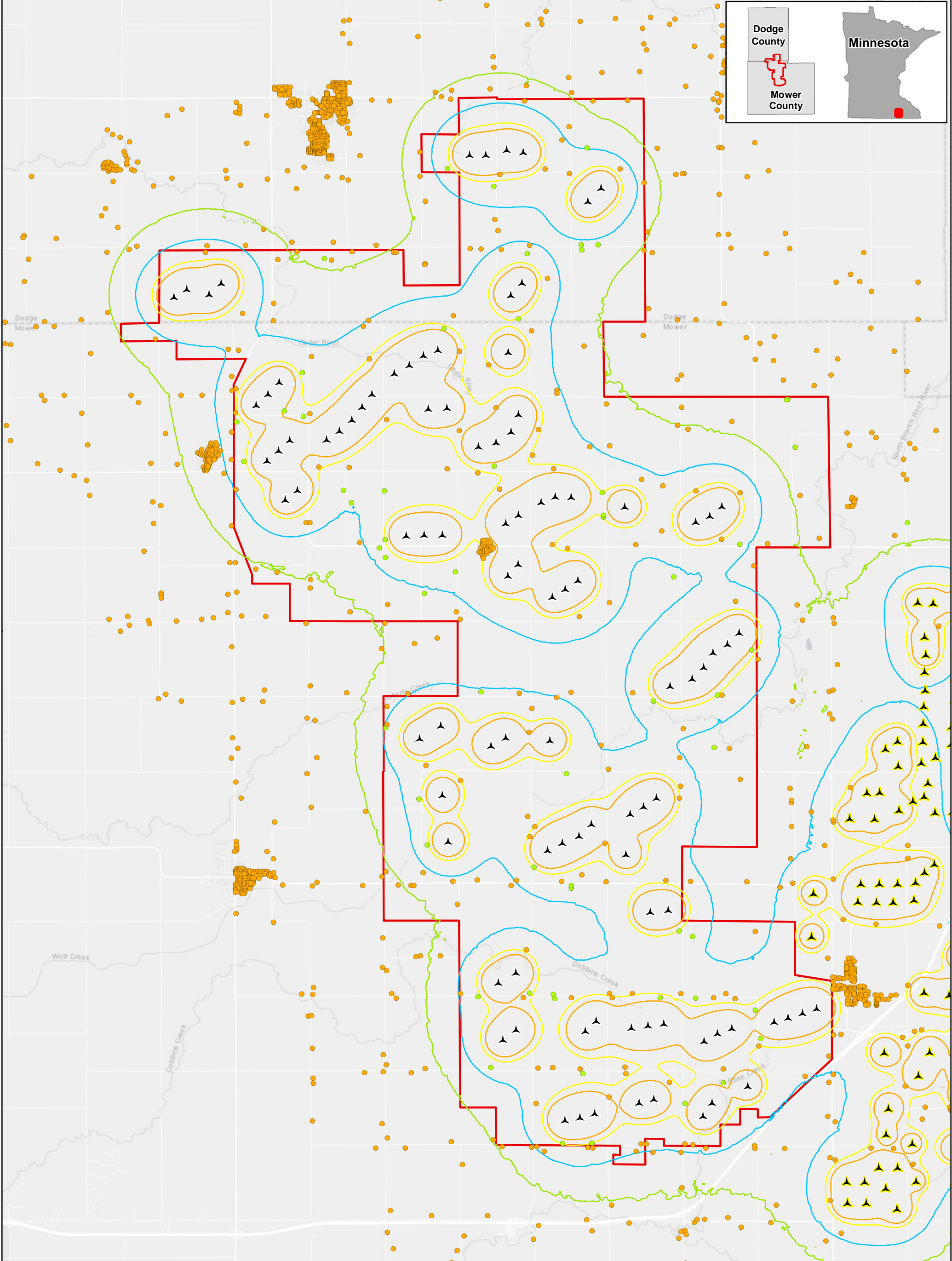


Figure 7
Sound/Noise
Pleasant Valley Wind Farm
Repower Project

Mower and Dodge Counties, Minnesota

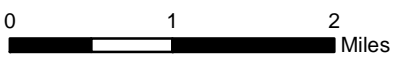
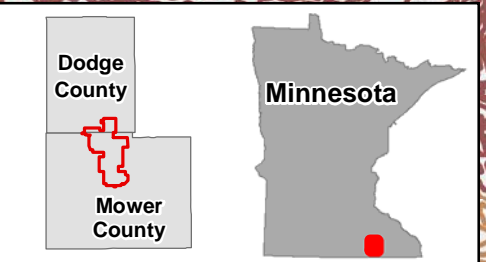
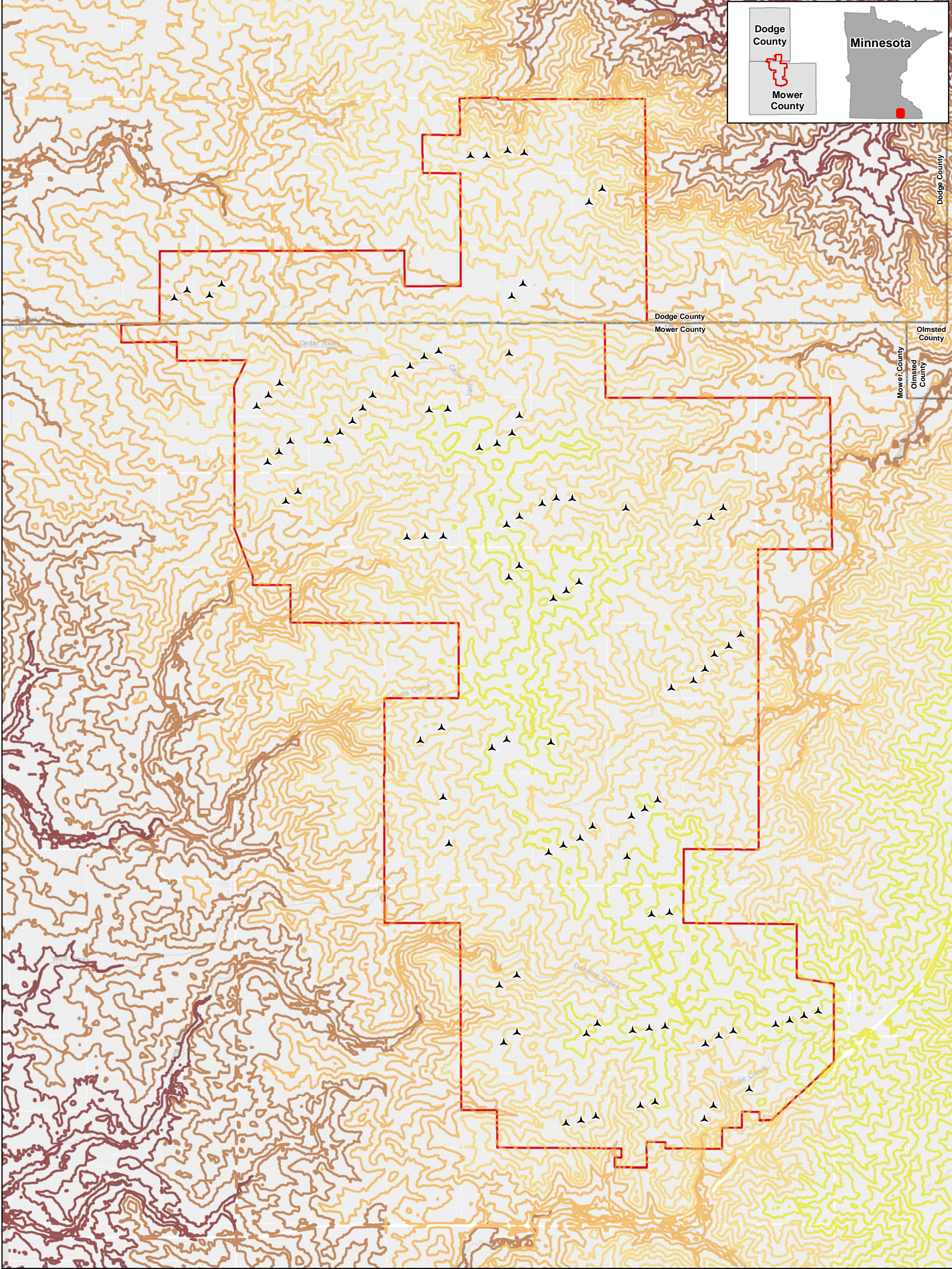
- ▲ Turbine (110m rotor diameter)
- Non-Participating (within 2 mile of Project Boundary)
- Participating (within 2 mile of Project Boundary)
- Project Boundary
- Sound Pressure Levels (Turbine Only)**
- 35 dBA
- 40 dBA
- 45 dBA
- 47 dBA



0 1 2 Miles

1:75,000

For Environmental Review Purposes Only
 Data Source: Xcel Energy, US Census, MDOT, MDNR, 2019 NAIP



1:75,000

Figure 8
Topographic Map
Pleasant Valley Wind Farm
Repower Project

Mower and Dodge Counties, Minnesota

- ▲ Turbine (110m rotor diameter)
- ▭ Project Boundary
- ▭ County Boundary
- Contour Elevation (feet)**
- 1370 - 1430
- 1320 - 1370
- 1280 - 1320
- 1240 - 1280
- 1170 - 1240

For Environmental Review Purposes Only
 Data Source: Xcel Energy, US Census, MDOT, MDNR, 2019 NAIP