

Appendix F EJSCREEN Reports

Location: Cottonwood County, Watonwan County

Ring (buffer): 0-mile radius

Description:

Summary of ACS Estimates		2014 - 2018	
Population		22,345	
Population Density (per sq. mile)		21	
People of Color Population		4,520	
% People of Color Population		20%	
Households		9,168	
Housing Units		10,477	
Housing Units Built Before 1950		4,488	
Per Capita Income		27,491	
Land Area (sq. miles) (Source: SF1)		1,074.93	
% Land Area		99%	
Water Area (sq. miles) (Source: SF1)		13.37	
% Water Area		1%	
		2014 - 2018 ACS Estimates	Percent MOE (±)
Population by Race			
Total		22,345	100% 0
Population Reporting One Race		22,090	99% 848
White		19,596	88% 323
Black		187	1% 37
American Indian		114	1% 76
Asian		528	2% 55
Pacific Islander		26	0% 31
Some Other Race		1,639	7% 326
Population Reporting Two or More Races		255	1% 49
Total Hispanic Population		3,537	16% 0
Total Non-Hispanic Population		18,808	
White Alone		17,825	80% 14
Black Alone		165	1% 29
American Indian Alone		41	0% 26
Non-Hispanic Asian Alone		517	2% 53
Pacific Islander Alone		26	0% 31
Other Race Alone		4	0% 14
Two or More Races Alone		230	1% 48
Population by Sex			
Male		11,070	50% 95
Female		11,275	50% 95
Population by Age			
Age 0-4		1,585	7% 47
Age 0-17		5,422	24% 169
Age 18+		16,923	76% 314
Age 65+		4,671	21% 163

Data Note: Detail may not sum to totals due to rounding. Hispanic population can be of any race.

N/A means not available. **Source:** U.S. Census Bureau, American Community Survey (ACS) 2014 - 2018

Location: Cottonwood County, Watonwan County

Ring (buffer): 0-mile radius

Description:

	2014 - 2018 ACS Estimates	Percent	MOE (±)
Population 25+ by Educational Attainment			
Total	15,164	100%	67
Less than 9th Grade	1,050	7%	159
9th - 12th Grade, No Diploma	922	6%	115
High School Graduate	5,795	38%	175
Some College, No Degree	4,622	30%	204
Associate Degree	1,476	10%	104
Bachelor's Degree or more	2,775	18%	166
Population Age 5+ Years by Ability to Speak English			
Total	20,760	100%	34
Speak only English	17,612	85%	142
Non-English at Home ¹⁺²⁺³⁺⁴	3,148	15%	281
¹ Speak English "very well"	1,714	8%	211
² Speak English "well"	526	3%	121
³ Speak English "not well"	695	3%	161
⁴ Speak English "not at all"	213	1%	160
³⁺⁴ Speak English "less than well"	908	4%	227
²⁺³⁺⁴ Speak English "less than very well"	1,434	7%	256
Linguistically Isolated Households*			
Total	292	100%	92
Speak Spanish	196	67%	87
Speak Other Indo-European Languages	5	2%	14
Speak Asian-Pacific Island Languages	91	31%	25
Speak Other Languages	0	0%	14
Households by Household Income			
Household Income Base	9,168	100%	148
< \$15,000	1,006	11%	104
\$15,000 - \$25,000	936	10%	112
\$25,000 - \$50,000	2,477	27%	160
\$50,000 - \$75,000	1,861	20%	149
\$75,000 +	2,888	32%	153
Occupied Housing Units by Tenure			
Total	9,168	100%	148
Owner Occupied	7,066	77%	164
Renter Occupied	2,102	23%	142
Employed Population Age 16+ Years			
Total	17,586	100%	102
In Labor Force	11,367	65%	191
Civilian Unemployed in Labor Force	381	2%	67
Not In Labor Force	6,219	35%	200

Data Note: Detail may not sum to totals due to rounding. Hispanic population can be of any race.

N/A means not available. **Source:** U.S. Census Bureau, American Community Survey (ACS)

*Households in which no one 14 and over speaks English "very well" or speaks English only.

Location: Cottonwood County, Watonwan County

Ring (buffer): 0-mile radius

Description:

	2014 - 2018 ACS Estimates	Percent	MOE (±)
Population by Language Spoken at Home*			
Total (persons age 5 and above)	20,760	100%	34
English	17,612	85%	150
Spanish	2,465	12%	241
French	1	0%	14
French Creole	N/A	N/A	N/A
Italian	N/A	N/A	N/A
Portuguese	N/A	N/A	N/A
German	138	1%	66
Yiddish	N/A	N/A	N/A
Other West Germanic	N/A	N/A	N/A
Scandinavian	N/A	N/A	N/A
Greek	N/A	N/A	N/A
Russian	N/A	N/A	N/A
Polish	N/A	N/A	N/A
Serbo-Croatian	N/A	N/A	N/A
Other Slavic	N/A	N/A	N/A
Armenian	N/A	N/A	N/A
Persian	N/A	N/A	N/A
Gujarathi	N/A	N/A	N/A
Hindi	N/A	N/A	N/A
Urdu	N/A	N/A	N/A
Other Indic	N/A	N/A	N/A
Other Indo-European	11	0%	14
Chinese	0	0%	14
Japanese	N/A	N/A	N/A
Korean	0	0%	14
Mon-Khmer, Cambodian	N/A	N/A	N/A
Hmong	N/A	N/A	N/A
Thai	N/A	N/A	N/A
Laotian	N/A	N/A	N/A
Vietnamese	24	0%	24
Other Asian	356	2%	69
Tagalog	7	0%	5
Other Pacific Island	N/A	N/A	N/A
Navajo	N/A	N/A	N/A
Other Native American	N/A	N/A	N/A
Hungarian	N/A	N/A	N/A
Arabic	17	0%	26
Hebrew	N/A	N/A	N/A
African	N/A	N/A	N/A
Other and non-specified	123	1%	150
Total Non-English	3,148	15%	154

Data Note: Detail may not sum to totals due to rounding. Hispanic population can be of any race.

N/A means not available. **Source:** U.S. Census Bureau, American Community Survey (ACS) 2014 - 2018.

*Population by Language Spoken at Home is available at the census tract summary level and up.

Location: Tract: 27033270100,27165950300,27165950100

Ring (buffer): 0-mile radius

Description:

Summary of ACS Estimates		2014 - 2018	
Population		9,254	
Population Density (per sq. mile)		16	
People of Color Population		1,997	
% People of Color Population		22%	
Households		3,694	
Housing Units		4,321	
Housing Units Built Before 1950		2,022	
Per Capita Income		29,373	
Land Area (sq. miles) (Source: SF1)		575.98	
% Land Area		99%	
Water Area (sq. miles) (Source: SF1)		5.45	
% Water Area		1%	

	2014 - 2018 ACS Estimates	Percent	MOE (±)
Population by Race			
Total	9,254	100%	167
Population Reporting One Race	9,094	98%	506
White	8,078	87%	194
Black	132	1%	37
American Indian	91	1%	76
Asian	402	4%	73
Pacific Islander	0	0%	9
Some Other Race	391	4%	117
Population Reporting Two or More Races	160	2%	46
Total Hispanic Population	1,316	14%	168
Total Non-Hispanic Population	7,938		
White Alone	7,257	78%	181
Black Alone	112	1%	32
American Indian Alone	23	0%	23
Non-Hispanic Asian Alone	402	4%	73
Pacific Islander Alone	0	0%	9
Other Race Alone	0	0%	9
Two or More Races Alone	144	2%	44
Population by Sex			
Male	4,566	49%	116
Female	4,688	51%	134
Population by Age			
Age 0-4	736	8%	79
Age 0-17	2,236	24%	115
Age 18+	7,018	76%	213
Age 65+	1,903	21%	100

Data Note: Detail may not sum to totals due to rounding. Hispanic population can be of any race.

N/A means not available. **Source:** U.S. Census Bureau, American Community Survey (ACS) 2014 - 2018

Location: Tract: 27033270100,27165950300,27165950100

Ring (buffer): 0-mile radius

Description:

	2014 - 2018 ACS Estimates	Percent	MOE (±)
Population 25+ by Educational Attainment			
Total	6,321	100%	130
Less than 9th Grade	422	7%	97
9th - 12th Grade, No Diploma	380	6%	56
High School Graduate	2,413	38%	95
Some College, No Degree	2,046	32%	103
Associate Degree	728	12%	63
Bachelor's Degree or more	1,060	17%	74
Population Age 5+ Years by Ability to Speak English			
Total	8,518	100%	165
Speak only English	7,197	84%	168
Non-English at Home ¹⁺²⁺³⁺⁴	1,321	16%	151
¹ Speak English "very well"	630	7%	106
² Speak English "well"	314	4%	67
³ Speak English "not well"	309	4%	73
⁴ Speak English "not at all"	68	1%	56
³⁺⁴ Speak English "less than well"	377	4%	91
²⁺³⁺⁴ Speak English "less than very well"	691	8%	113
Linguistically Isolated Households*			
Total	194	100%	48
Speak Spanish	105	54%	47
Speak Other Indo-European Languages	5	3%	9
Speak Asian-Pacific Island Languages	84	43%	28
Speak Other Languages	0	0%	9
Households by Household Income			
Household Income Base	3,694	100%	81
< \$15,000	303	8%	58
\$15,000 - \$25,000	320	9%	45
\$25,000 - \$50,000	1,033	28%	75
\$50,000 - \$75,000	763	21%	72
\$75,000 +	1,275	35%	82
Occupied Housing Units by Tenure			
Total	3,694	100%	81
Owner Occupied	2,843	77%	79
Renter Occupied	851	23%	66
Employed Population Age 16+ Years			
Total	7,216	100%	131
In Labor Force	4,814	67%	132
Civilian Unemployed in Labor Force	153	2%	37
Not In Labor Force	2,402	33%	105

Data Note: Detail may not sum to totals due to rounding. Hispanic population can be of anyrace.

N/A means not available. **Source:** U.S. Census Bureau, American Community Survey (ACS)

*Households in which no one 14 and over speaks English "very well" or speaks English only.

EJSCREEN ACS Summary Report



Location: Tract: 27033270100,27165950300,27165950100

Ring (buffer): 0-mile radius

Description:

	2014 - 2018 ACS Estimates	Percent	MOE (±)
Population by Language Spoken at Home*			
Total (persons age 5 and above)	8,518	100%	165
English	7,197	84%	191
Spanish	975	11%	143
French	0	0%	9
French Creole	N/A	N/A	N/A
Italian	N/A	N/A	N/A
Portuguese	N/A	N/A	N/A
German	40	0%	20
Yiddish	N/A	N/A	N/A
Other West Germanic	N/A	N/A	N/A
Scandinavian	N/A	N/A	N/A
Greek	N/A	N/A	N/A
Russian	N/A	N/A	N/A
Polish	N/A	N/A	N/A
Serbo-Croatian	N/A	N/A	N/A
Other Slavic	N/A	N/A	N/A
Armenian	N/A	N/A	N/A
Persian	N/A	N/A	N/A
Gujarathi	N/A	N/A	N/A
Hindi	N/A	N/A	N/A
Urdu	N/A	N/A	N/A
Other Indic	N/A	N/A	N/A
Other Indo-European	2	0%	9
Chinese	0	0%	9
Japanese	N/A	N/A	N/A
Korean	0	0%	9
Mon-Khmer, Cambodian	N/A	N/A	N/A
Hmong	N/A	N/A	N/A
Thai	N/A	N/A	N/A
Laotian	N/A	N/A	N/A
Vietnamese	23	0%	25
Other Asian	266	3%	60
Tagalog	5	0%	9
Other Pacific Island	N/A	N/A	N/A
Navajo	N/A	N/A	N/A
Other Native American	N/A	N/A	N/A
Hungarian	N/A	N/A	N/A
Arabic	0	0%	9
Hebrew	N/A	N/A	N/A
African	N/A	N/A	N/A
Other and non-specified	7	0%	10
Total Non-English	1,321	16%	252

Data Note: Detail may not sum to totals due to rounding. Hispanic population can be of any race.

N/A means not available. **Source:** U.S. Census Bureau, American Community Survey (ACS) 2014 - 2018.

*Population by Language Spoken at Home is available at the census tract summary level and up.

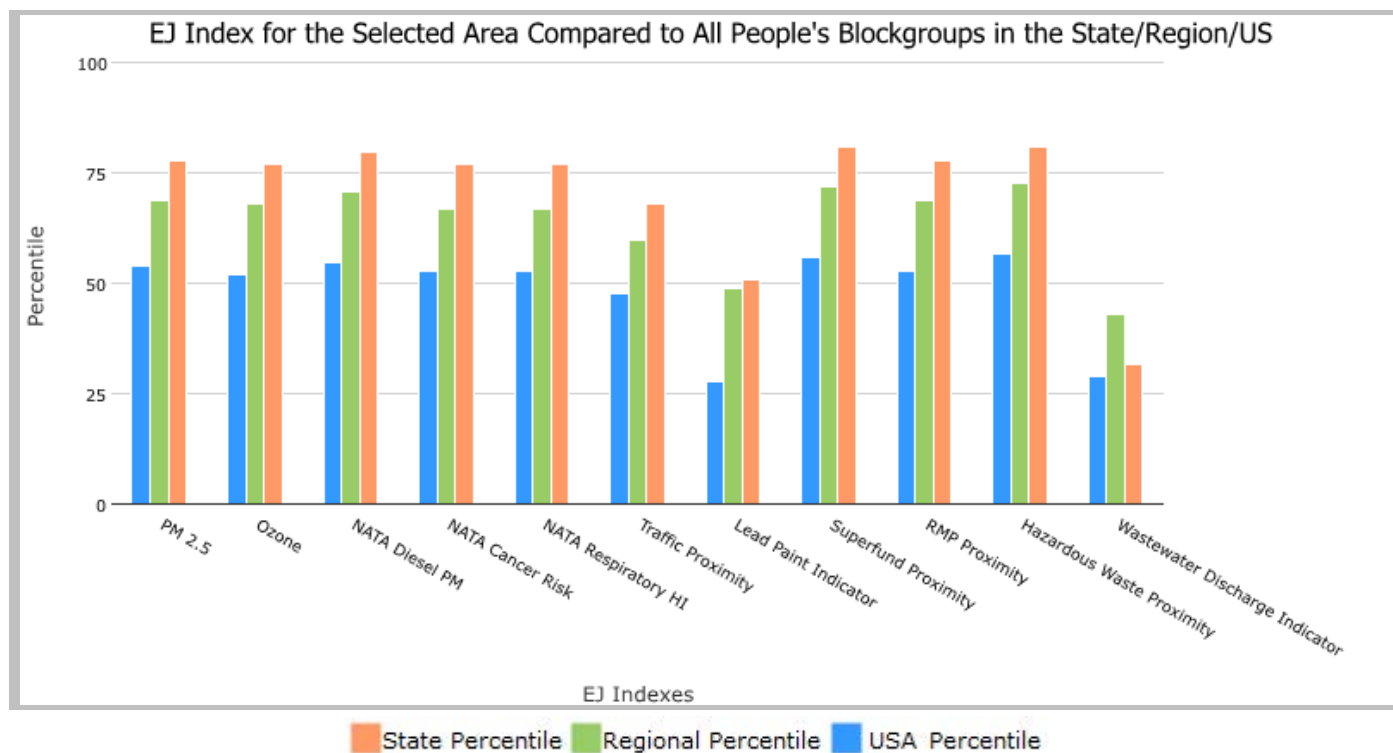
EJSCREEN Report (Version 2020)

County: Cottonwood, Watonwan, MINNESOTA, EPA Region 5

Approximate Population: 22,345

Input Area (sq. miles): 1088.29

Selected Variables	State Percentile	EPA Region Percentile	USA Percentile
EJ Indexes			
EJ Index for PM _{2.5}	78	69	54
EJ Index for Ozone	77	68	52
EJ Index for NATA* Diesel PM	80	71	55
EJ Index for NATA* Air Toxics Cancer Risk	77	67	53
EJ Index for NATA* Respiratory Hazard Index	77	67	53
EJ Index for Traffic Proximity and Volume	68	60	48
EJ Index for Lead Paint Indicator	51	49	28
EJ Index for Superfund Proximity	81	72	56
EJ Index for RMP Proximity	78	69	53
EJ Index for Hazardous Waste Proximity	81	73	57
EJ Index for Wastewater Discharge Indicator	32	43	29

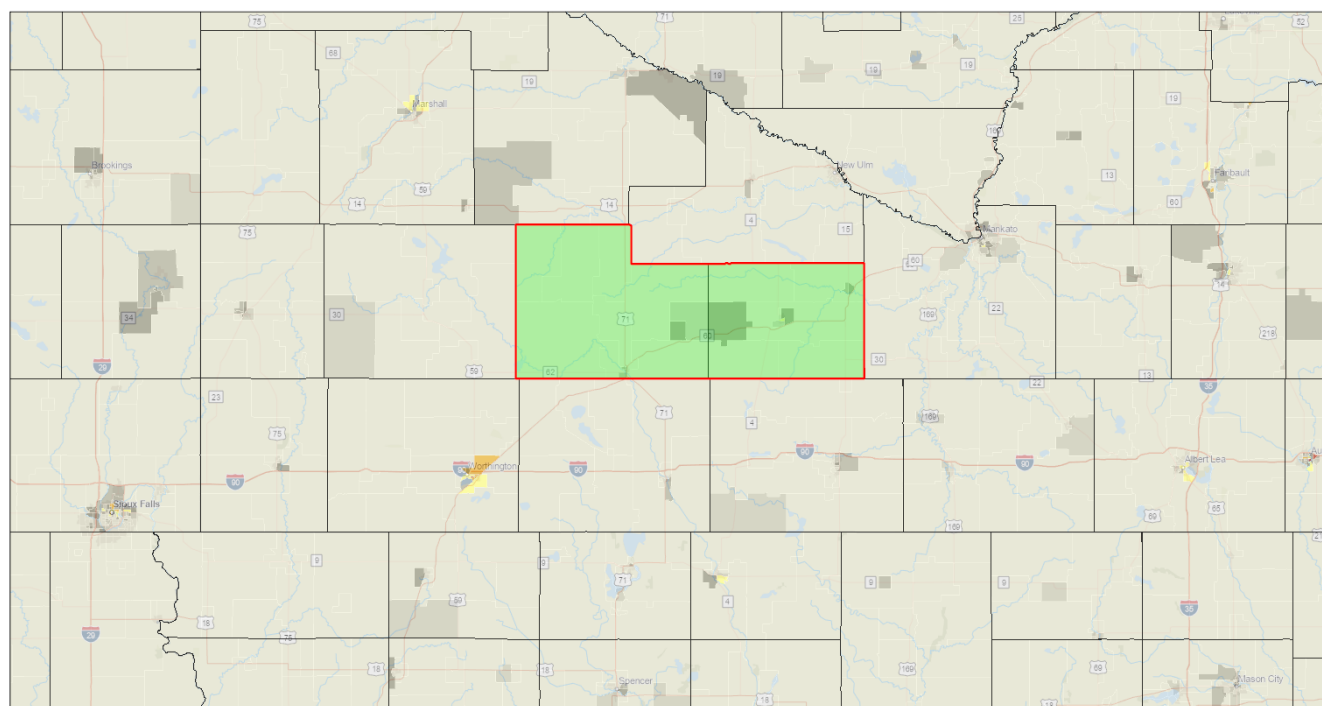


This report shows the values for environmental and demographic indicators and EJSCREEN indexes. It shows environmental and demographic raw data (e.g., the estimated concentration of ozone in the air), and also shows what percentile each raw data value represents. These percentiles provide perspective on how the selected block group or buffer area compares to the entire state, EPA region, or nation. For example, if a given location is at the 95th percentile nationwide, this means that only 5 percent of the US population has a higher block group value than the average person in the location being analyzed. The years for which the data are available, and the methods used, vary across these indicators. Important caveats and uncertainties apply to this screening-level information, so it is essential to understand the limitations on appropriate interpretations and applications of these indicators. Please see EJSCREEN documentation for discussion of these issues before using reports.

County: Cottonwood, Watonwan, MINNESOTA, EPA Region 5

Approximate Population: 22,345

Input Area (sq. miles): 1088.29



January 17, 2022

Project 1 EJSCREEN_Indexes
Counties Data not available
Less than 50 percentile 50 -60 percentile 60 -70 percentile 70 -80 percentile 80 - 90 percentile 90 - 95 percentile 95 - 100 percentile

1:1,155,581
0 10 20 40 mi
0 15 30 60 km

Esri Canada, Esri, HERE, Garmin, SafeGraph, FAO, METI/NASA, USGS, EPA, NPS, EPA OEI

Sites reporting to EPA

Superfund NPL	0
Hazardous Waste Treatment, Storage, and Disposal Facilities (TSDF)	0

EJSCREEN Report (Version 2020)

County: Cottonwood, Watonwan, MINNESOTA, EPA Region 5

Approximate Population: 22,345

Input Area (sq. miles): 1088.29

Selected Variables	Value	State Avg.	%ile in State	EPA Region Avg.	%ile in EPA Region	USA Avg.	%ile in USA
Environmental Indicators							
Particulate Matter (PM 2.5 in $\mu\text{g}/\text{m}^3$)	6.49	7.07	21	8.4	8	8.55	8
Ozone (ppb)	40.5	38.5	92	43.8	15	42.9	32
NATA* Diesel PM ($\mu\text{g}/\text{m}^3$)	0.117	0.333	14	0.446	<50th	0.478	<50th
NATA* Cancer Risk (lifetime risk per million)	24	24	51	26	<50th	32	<50th
NATA* Respiratory Hazard Index	0.29	0.31	45	0.34	<50th	0.44	<50th
Traffic Proximity and Volume (daily traffic count/distance to road)	29	440	24	530	21	750	19
Lead Paint Indicator (% Pre-1960 Housing)	0.57	0.31	80	0.38	73	0.28	81
Superfund Proximity (site count/km distance)	0.017	0.19	16	0.13	6	0.13	14
RMP Proximity (facility count/km distance)	1.7	0.77	86	0.83	85	0.74	88
Hazardous Waste Proximity (facility count/km distance)	0.031	1.7	6	2.4	1	5	2
Wastewater Discharge Indicator (toxicity-weighted concentration/m distance)	8.3E-05	1.7	61	2.4	43	9.4	53
Demographic Indicators							
Demographic Index	26%	22%	72	28%	61	36%	44
People of Color Population	20%	20%	66	25%	59	39%	37
Low Income Population	33%	25%	72	30%	60	33%	56
Linguistically Isolated Population	3%	2%	78	2%	78	4%	64
Population With Less Than High School Education	13%	7%	85	10%	73	13%	63
Population Under 5 years of age	7%	6%	62	6%	66	6%	64
Population over 64 years of age	21%	15%	79	16%	78	15%	79

* The National-Scale Air Toxics Assessment (NATA) is EPA's ongoing, comprehensive evaluation of air toxics in the United States. EPA developed the NATA to prioritize air toxics, emission sources, and locations of interest for further study. It is important to remember that NATA provides broad estimates of health risks over geographic areas of the country, not definitive risks to specific individuals or locations. More information on the NATA analysis can be found at: <https://www.epa.gov/national-air-toxics-assessment>.

For additional information, see: www.epa.gov/environmentaljustice

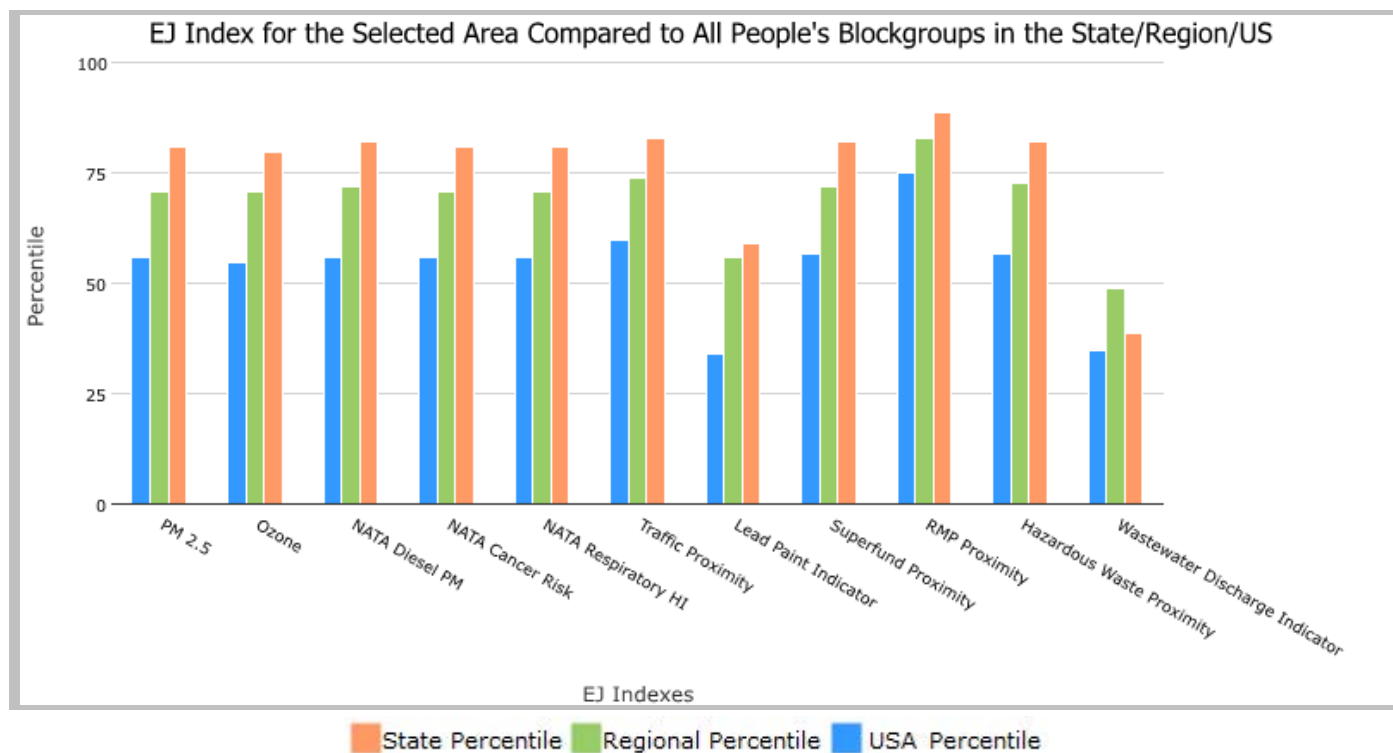
EJSCREEN is a screening tool for pre-decisional use only. It can help identify areas that may warrant additional consideration, analysis, or outreach. It does not provide a basis for decision-making, but it may help identify potential areas of EJ concern. Users should keep in mind that screening tools are subject to substantial uncertainty in their demographic and environmental data, particularly when looking at small geographic areas. Important caveats and uncertainties apply to this screening-level information, so it is essential to understand the limitations on appropriate interpretations and applications of these indicators. Please see EJSCREEN documentation for discussion of these issues before using reports. This screening tool does not provide data on every environmental impact and demographic factor that may be relevant to a particular location. EJSCREEN outputs should be supplemented with additional information and local knowledge before taking any action to address potential EJ concerns.

Tract: 27033270100,27165950300,27165950100, MINNESOTA, EPA Region 5

Approximate Population: 9,254

Input Area (sq. miles): 581.43

Selected Variables	State Percentile	EPA Region Percentile	USA Percentile
EJ Indexes			
EJ Index for PM _{2.5}	81	71	56
EJ Index for Ozone	80	71	55
EJ Index for NATA* Diesel PM	82	72	56
EJ Index for NATA* Air Toxics Cancer Risk	81	71	56
EJ Index for NATA* Respiratory Hazard Index	81	71	56
EJ Index for Traffic Proximity and Volume	83	74	60
EJ Index for Lead Paint Indicator	59	56	34
EJ Index for Superfund Proximity	82	72	57
EJ Index for RMP Proximity	89	83	75
EJ Index for Hazardous Waste Proximity	82	73	57
EJ Index for Wastewater Discharge Indicator	39	49	35

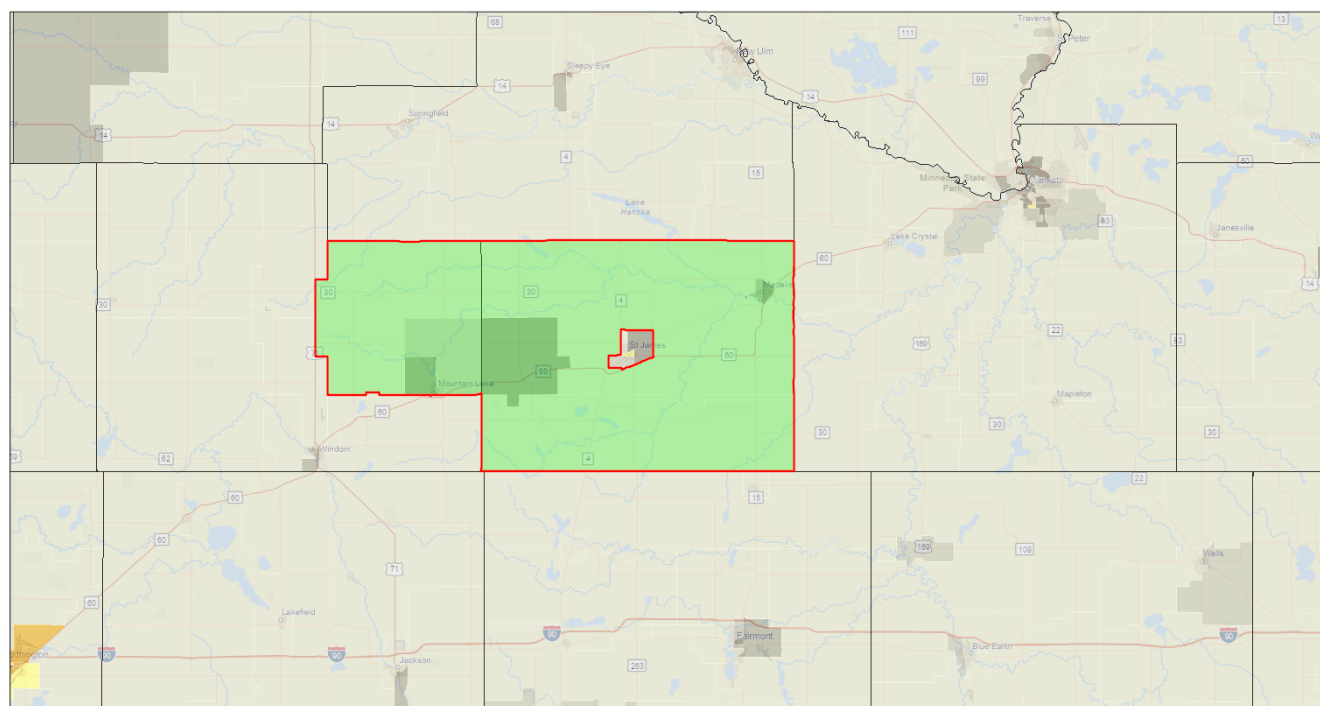


This report shows the values for environmental and demographic indicators and EJSCREEN indexes. It shows environmental and demographic raw data (e.g., the estimated concentration of ozone in the air), and also shows what percentile each raw data value represents. These percentiles provide perspective on how the selected block group or buffer area compares to the entire state, EPA region, or nation. For example, if a given location is at the 95th percentile nationwide, this means that only 5 percent of the US population has a higher block group value than the average person in the location being analyzed. The years for which the data are available, and the methods used, vary across these indicators. Important caveats and uncertainties apply to this screening-level information, so it is essential to understand the limitations on appropriate interpretations and applications of these indicators. Please see EJSCREEN documentation for discussion of these issues before using reports.

Tract: 27033270100,27165950300,27165950100, MINNESOTA, EPA Region 5

Approximate Population: 9,254

Input Area (sq. miles): 581.43



January 17, 2022

Project 1 EJSCREEN_Indexes
Counties Data not available
Less than 50 percentile 50 -60 percentile 60 -70 percentile 70 -80 percentile 80 - 90 percentile 90 - 95 percentile 95 - 100 percentile

1:577,791
0 5 10 20 mi
0 5 10 20 km

Esri Canada, Esri, HERE, Garmin, SafeGraph, FAO, METI/ANSA, USGS, EPA, NPS, EPA OIE

Sites reporting to EPA

Superfund NPL	0
Hazardous Waste Treatment, Storage, and Disposal Facilities (TSDF)	0

EJSCREEN Report (Version 2020)

Tract: 27033270100,27165950300,27165950100, MINNESOTA, EPA Region 5

Approximate Population: 9,254

Input Area (sq. miles): 581.43

Selected Variables	Value	State Avg.	%ile in State	EPA Region Avg.	%ile in EPA Region	USA Avg.	%ile in USA
Environmental Indicators							
Particulate Matter (PM 2.5 in $\mu\text{g}/\text{m}^3$)	6.57	7.07	25	8.4	8	8.55	9
Ozone (ppb)	40.4	38.5	91	43.8	15	42.9	31
NATA* Diesel PM ($\mu\text{g}/\text{m}^3$)	0.114	0.333	13	0.446	<50th	0.478	<50th
NATA* Cancer Risk (lifetime risk per million)	22	24	41	26	<50th	32	<50th
NATA* Respiratory Hazard Index	0.26	0.31	38	0.34	<50th	0.44	<50th
Traffic Proximity and Volume (daily traffic count/distance to road)	10	440	15	530	13	750	11
Lead Paint Indicator (% Pre-1960 Housing)	0.58	0.31	81	0.38	73	0.28	81
Superfund Proximity (site count/km distance)	0.021	0.19	21	0.13	11	0.13	19
RMP Proximity (facility count/km distance)	2.2	0.77	93	0.83	90	0.74	92
Hazardous Waste Proximity (facility count/km distance)	0.032	1.7	7	2.4	2	5	2
Wastewater Discharge Indicator (toxicity-weighted concentration/m distance)	3.7E-05	1.7	58	2.4	40	9.4	49
Demographic Indicators							
Demographic Index	27%	22%	74	28%	63	36%	45
People of Color Population	22%	20%	68	25%	61	39%	39
Low Income Population	33%	25%	73	30%	61	33%	57
Linguistically Isolated Population	5%	2%	85	2%	85	4%	73
Population With Less Than High School Education	13%	7%	84	10%	72	13%	62
Population Under 5 years of age	8%	6%	71	6%	74	6%	72
Population over 64 years of age	21%	15%	78	16%	76	15%	78

* The National-Scale Air Toxics Assessment (NATA) is EPA's ongoing, comprehensive evaluation of air toxics in the United States. EPA developed the NATA to prioritize air toxics, emission sources, and locations of interest for further study. It is important to remember that NATA provides broad estimates of health risks over geographic areas of the country, not definitive risks to specific individuals or locations. More information on the NATA analysis can be found at: <https://www.epa.gov/national-air-toxics-assessment>.

For additional information, see: www.epa.gov/environmentaljustice

EJSCREEN is a screening tool for pre-decisional use only. It can help identify areas that may warrant additional consideration, analysis, or outreach. It does not provide a basis for decision-making, but it may help identify potential areas of EJ concern. Users should keep in mind that screening tools are subject to substantial uncertainty in their demographic and environmental data, particularly when looking at small geographic areas. Important caveats and uncertainties apply to this screening-level information, so it is essential to understand the limitations on appropriate interpretations and applications of these indicators. Please see EJSCREEN documentation for discussion of these issues before using reports. This screening tool does not provide data on every environmental impact and demographic factor that may be relevant to a particular location. EJSCREEN outputs should be supplemented with additional information and local knowledge before taking any action to address potential EJ concerns.

Location: Cottonwood County, Watonwan County, Martin County

Ring (buffer): 0-mile radius

Description:

Summary of ACS Estimates		2014 - 2018	
Population		42,309	
Population Density (per sq. mile)		24	
People of Color Population		5,861	
% People of Color Population		14%	
Households		17,821	
Housing Units		20,432	
Housing Units Built Before 1950		8,750	
Per Capita Income		28,691	
Land Area (sq. miles) (Source: SF1)		1,787.26	
% Land Area		98%	
Water Area (sq. miles) (Source: SF1)		30.61	
% Water Area		2%	
		2014 - 2018 ACS Estimates	Percent MOE (±)
Population by Race			
Total		42,309	100% 0
Population Reporting One Race		41,729	99% 851
White		38,804	92% 323
Black		251	1% 40
American Indian		139	0% 76
Asian		603	1% 55
Pacific Islander		39	0% 31
Some Other Race		1,893	4% 326
Population Reporting Two or More Races		580	1% 67
Total Hispanic Population		4,388	10% 0
Total Non-Hispanic Population		37,921	
White Alone		36,448	86% 14
Black Alone		220	1% 38
American Indian Alone		64	0% 26
Non-Hispanic Asian Alone		592	1% 53
Pacific Islander Alone		39	0% 31
Other Race Alone		9	0% 14
Two or More Races Alone		549	1% 65
Population by Sex			
Male		21,138	50% 95
Female		21,171	50% 95
Population by Age			
Age 0-4		2,677	6% 67
Age 0-17		9,730	23% 237
Age 18+		32,579	77% 466
Age 65+		9,152	22% 296

Data Note: Detail may not sum to totals due to rounding. Hispanic population can be of any race.

N/A means not available. **Source:** U.S. Census Bureau, American Community Survey (ACS) 2014 - 2018

Location: Cottonwood County, Watonwan County, Martin County

Ring (buffer): 0-mile radius

Description:

	2014 - 2018 ACS Estimates	Percent	MOE (±)
Population 25+ by Educational Attainment			
Total	29,333	100%	85
Less than 9th Grade	1,377	5%	159
9th - 12th Grade, No Diploma	1,623	6%	146
High School Graduate	11,198	38%	341
Some College, No Degree	9,510	32%	324
Associate Degree	3,177	11%	181
Bachelor's Degree or more	5,625	19%	266
Population Age 5+ Years by Ability to Speak English			
Total	39,632	100%	69
Speak only English	36,031	91%	160
Non-English at Home ¹⁺²⁺³⁺⁴	3,601	9%	281
¹ Speak English "very well"	2,002	5%	211
² Speak English "well"	637	2%	121
³ Speak English "not well"	722	2%	161
⁴ Speak English "not at all"	240	1%	160
³⁺⁴ Speak English "less than well"	962	2%	227
²⁺³⁺⁴ Speak English "less than very well"	1,599	4%	256
Linguistically Isolated Households*			
Total	360	100%	92
Speak Spanish	233	65%	87
Speak Other Indo-European Languages	36	10%	38
Speak Asian-Pacific Island Languages	91	25%	25
Speak Other Languages	0	0%	14
Households by Household Income			
Household Income Base	17,821	100%	245
< \$15,000	1,961	11%	170
\$15,000 - \$25,000	1,757	10%	159
\$25,000 - \$50,000	4,749	27%	271
\$50,000 - \$75,000	3,530	20%	225
\$75,000 +	5,824	33%	256
Occupied Housing Units by Tenure			
Total	17,821	100%	245
Owner Occupied	13,402	75%	256
Renter Occupied	4,419	25%	243
Employed Population Age 16+ Years			
Total	33,692	100%	102
In Labor Force	21,771	65%	305
Civilian Unemployed in Labor Force	746	2%	117
Not In Labor Force	11,921	35%	297

Data Note: Detail may not sum to totals due to rounding. Hispanic population can be of any race.

N/A means not available. **Source:** U.S. Census Bureau, American Community Survey (ACS)

*Households in which no one 14 and over speaks English "very well" or speaks English only.

EJSCREEN ACS Summary Report



Location: Cottonwood County, Watonwan County, Martin County

Ring (buffer): 0-mile radius

Description:

	2014 - 2018 ACS Estimates	Percent	MOE (±)
Population by Language Spoken at Home*			
Total (persons age 5 and above)	39,632	100%	69
English	36,031	91%	158
Spanish	2,768	7%	241
French	17	0%	22
French Creole	N/A	N/A	N/A
Italian	N/A	N/A	N/A
Portuguese	N/A	N/A	N/A
German	191	0%	66
Yiddish	N/A	N/A	N/A
Other West Germanic	N/A	N/A	N/A
Scandinavian	N/A	N/A	N/A
Greek	N/A	N/A	N/A
Russian	N/A	N/A	N/A
Polish	N/A	N/A	N/A
Serbo-Croatian	N/A	N/A	N/A
Other Slavic	N/A	N/A	N/A
Armenian	N/A	N/A	N/A
Persian	N/A	N/A	N/A
Gujarathi	N/A	N/A	N/A
Hindi	N/A	N/A	N/A
Urdu	N/A	N/A	N/A
Other Indic	N/A	N/A	N/A
Other Indo-European	31	0%	22
Chinese	0	0%	14
Japanese	N/A	N/A	N/A
Korean	0	0%	14
Mon-Khmer, Cambodian	N/A	N/A	N/A
Hmong	N/A	N/A	N/A
Thai	N/A	N/A	N/A
Laotian	N/A	N/A	N/A
Vietnamese	24	0%	24
Other Asian	386	1%	69
Tagalog	7	0%	14
Other Pacific Island	N/A	N/A	N/A
Navajo	N/A	N/A	N/A
Other Native American	N/A	N/A	N/A
Hungarian	N/A	N/A	N/A
Arabic	17	0%	26
Hebrew	N/A	N/A	N/A
African	N/A	N/A	N/A
Other and non-specified	138	0%	150
Total Non-English	3,601	9%	172

Data Note: Detail may not sum to totals due to rounding. Hispanic population can be of any race.

N/A means not available. **Source:** U.S. Census Bureau, American Community Survey (ACS) 2014 - 2018.

*Population by Language Spoken at Home is available at the census tract summary level and up.

Location: Tract: 27033270100,27165950300,27033270400,27091790100

Ring (buffer): 0-mile radius

Description:

Summary of ACS Estimates		2014 - 2018	
Population		11,349	
Population Density (per sq. mile)		16	
People of Color Population		1,433	
% People of Color Population		13%	
Households		4,740	
Housing Units		5,451	
Housing Units Built Before 1950		2,504	
Per Capita Income		28,349	
Land Area (sq. miles) (Source: SF1)		689.91	
% Land Area		99%	
Water Area (sq. miles) (Source: SF1)		7.67	
% Water Area		1%	

	2014 - 2018 ACS Estimates	Percent	MOE (±)
Population by Race			
Total	11,349	100%	233
Population Reporting One Race	11,192	99%	477
White	10,333	91%	228
Black	91	1%	36
American Indian	40	0%	23
Asian	418	4%	73
Pacific Islander	0	0%	9
Some Other Race	310	3%	108
Population Reporting Two or More Races	157	1%	35
Total Hispanic Population	761	7%	141
Total Non-Hispanic Population	10,588		
White Alone	9,916	87%	226
Black Alone	75	1%	28
American Indian Alone	30	0%	23
Non-Hispanic Asian Alone	418	4%	73
Pacific Islander Alone	0	0%	9
Other Race Alone	0	0%	9
Two or More Races Alone	149	1%	35
Population by Sex			
Male	5,700	50%	150
Female	5,649	50%	134
Population by Age			
Age 0-4	773	7%	56
Age 0-17	2,582	23%	116
Age 18+	8,767	77%	200
Age 65+	2,620	23%	108

Data Note: Detail may not sum to totals due to rounding. Hispanic population can be of any race.

N/A means not available. **Source:** U.S. Census Bureau, American Community Survey (ACS) 2014 - 2018

Location: Tract: 27033270100,27165950300,27033270400,27091790100

Ring (buffer): 0-mile radius

Description:

	2014 - 2018 ACS Estimates	Percent	MOE (±)
Population 25+ by Educational Attainment			
Total	8,021	100%	153
Less than 9th Grade	424	5%	65
9th - 12th Grade, No Diploma	510	6%	56
High School Graduate	3,119	39%	123
Some College, No Degree	2,671	33%	112
Associate Degree	915	11%	63
Bachelor's Degree or more	1,297	16%	86
Population Age 5+ Years by Ability to Speak English			
Total	10,576	100%	213
Speak only English	9,659	91%	180
Non-English at Home ¹⁺²⁺³⁺⁴	917	9%	114
¹ Speak English "very well"	470	4%	85
² Speak English "well"	234	2%	54
³ Speak English "not well"	180	2%	43
⁴ Speak English "not at all"	33	0%	26
³⁺⁴ Speak English "less than well"	213	2%	49
²⁺³⁺⁴ Speak English "less than very well"	447	4%	64
Linguistically Isolated Households*			
Total	116	100%	30
Speak Spanish	27	23%	15
Speak Other Indo-European Languages	5	4%	9
Speak Asian-Pacific Island Languages	84	72%	28
Speak Other Languages	0	0%	9
Households by Household Income			
Household Income Base	4,740	100%	82
< \$15,000	376	8%	52
\$15,000 - \$25,000	471	10%	63
\$25,000 - \$50,000	1,326	28%	89
\$50,000 - \$75,000	1,109	23%	72
\$75,000 +	1,458	31%	78
Occupied Housing Units by Tenure			
Total	4,740	100%	82
Owner Occupied	3,712	78%	79
Renter Occupied	1,028	22%	76
Employed Population Age 16+ Years			
Total	9,053	100%	166
In Labor Force	5,798	64%	174
Civilian Unemployed in Labor Force	238	3%	40
Not In Labor Force	3,255	36%	126

Data Note: Detail may not sum to totals due to rounding. Hispanic population can be of anyrace.

N/A means not available. **Source:** U.S. Census Bureau, American Community Survey (ACS)

*Households in which no one 14 and over speaks English "very well" or speaks English only.

EJSCREEN ACS Summary Report



Location: Tract: 27033270100,27165950300,27033270400,27091790100

Ring (buffer): 0-mile radius

Description:

	2014 - 2018 ACS Estimates	Percent	MOE (±)
Population by Language Spoken at Home*			
Total (persons age 5 and above)	10,576	100%	213
English	9,659	91%	202
Spanish	452	4%	119
French	0	0%	9
French Creole	N/A	N/A	N/A
Italian	N/A	N/A	N/A
Portuguese	N/A	N/A	N/A
German	127	1%	62
Yiddish	N/A	N/A	N/A
Other West Germanic	N/A	N/A	N/A
Scandinavian	N/A	N/A	N/A
Greek	N/A	N/A	N/A
Russian	N/A	N/A	N/A
Polish	N/A	N/A	N/A
Serbo-Croatian	N/A	N/A	N/A
Other Slavic	N/A	N/A	N/A
Armenian	N/A	N/A	N/A
Persian	N/A	N/A	N/A
Gujarathi	N/A	N/A	N/A
Hindi	N/A	N/A	N/A
Urdu	N/A	N/A	N/A
Other Indic	N/A	N/A	N/A
Other Indo-European	3	0%	9
Chinese	0	0%	9
Japanese	N/A	N/A	N/A
Korean	0	0%	9
Mon-Khmer, Cambodian	N/A	N/A	N/A
Hmong	N/A	N/A	N/A
Thai	N/A	N/A	N/A
Laotian	N/A	N/A	N/A
Vietnamese	24	0%	25
Other Asian	285	3%	60
Tagalog	7	0%	9
Other Pacific Island	N/A	N/A	N/A
Navajo	N/A	N/A	N/A
Other Native American	N/A	N/A	N/A
Hungarian	N/A	N/A	N/A
Arabic	16	0%	26
Hebrew	N/A	N/A	N/A
African	N/A	N/A	N/A
Other and non-specified	3	0%	9
Total Non-English	917	9%	294

Data Note: Detail may not sum to totals due to rounding. Hispanic population can be of any race.

N/A means not available. **Source:** U.S. Census Bureau, American Community Survey (ACS) 2014 - 2018.

*Population by Language Spoken at Home is available at the census tract summary level and up.

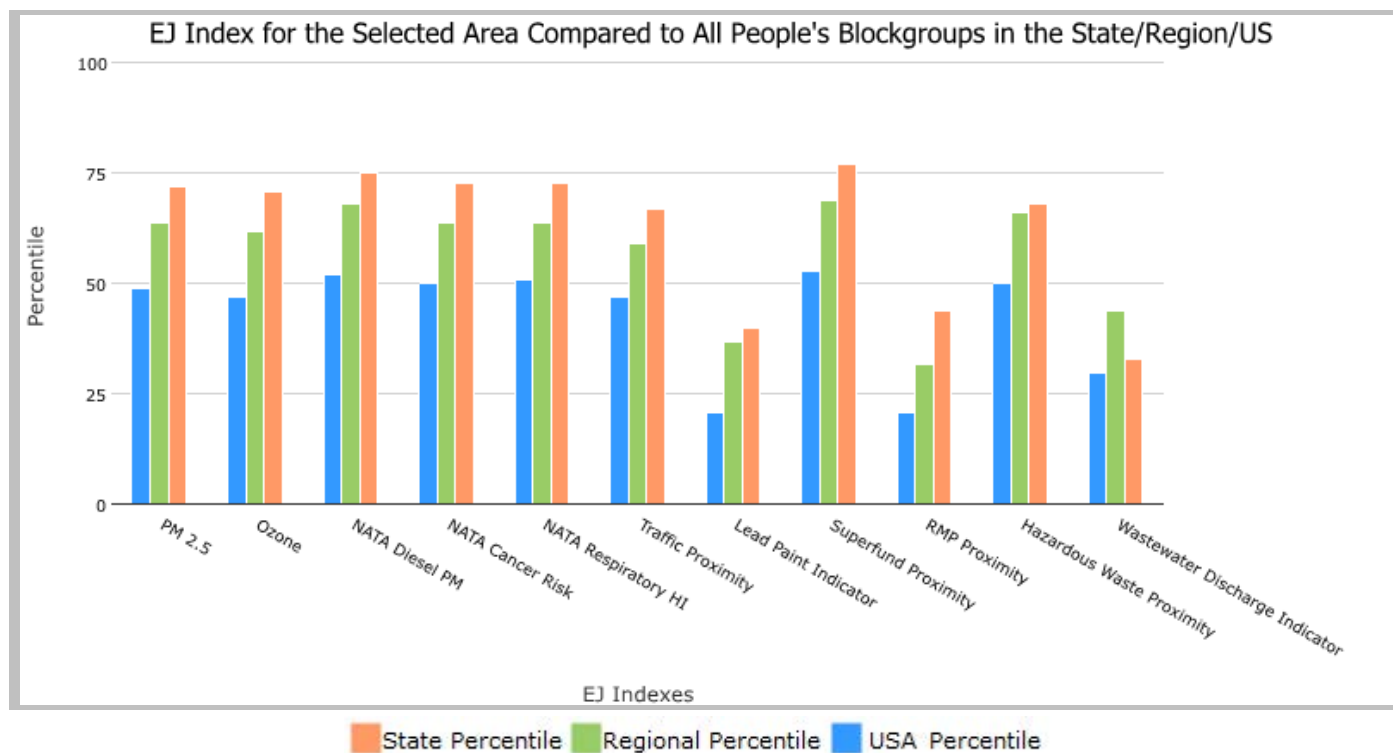
EJSCREEN Report (Version 2020)

County: Cottonwood, Watonwan, Martin, MINNESOTA, EPA Region 5

Approximate Population: 42,309

Input Area (sq. miles): 1817.86

Selected Variables	State Percentile	EPA Region Percentile	USA Percentile
EJ Indexes			
EJ Index for PM _{2.5}	72	64	49
EJ Index for Ozone	71	62	47
EJ Index for NATA* Diesel PM	75	68	52
EJ Index for NATA* Air Toxics Cancer Risk	73	64	50
EJ Index for NATA* Respiratory Hazard Index	73	64	51
EJ Index for Traffic Proximity and Volume	67	59	47
EJ Index for Lead Paint Indicator	40	37	21
EJ Index for Superfund Proximity	77	69	53
EJ Index for RMP Proximity	44	32	21
EJ Index for Hazardous Waste Proximity	68	66	50
EJ Index for Wastewater Discharge Indicator	33	44	30

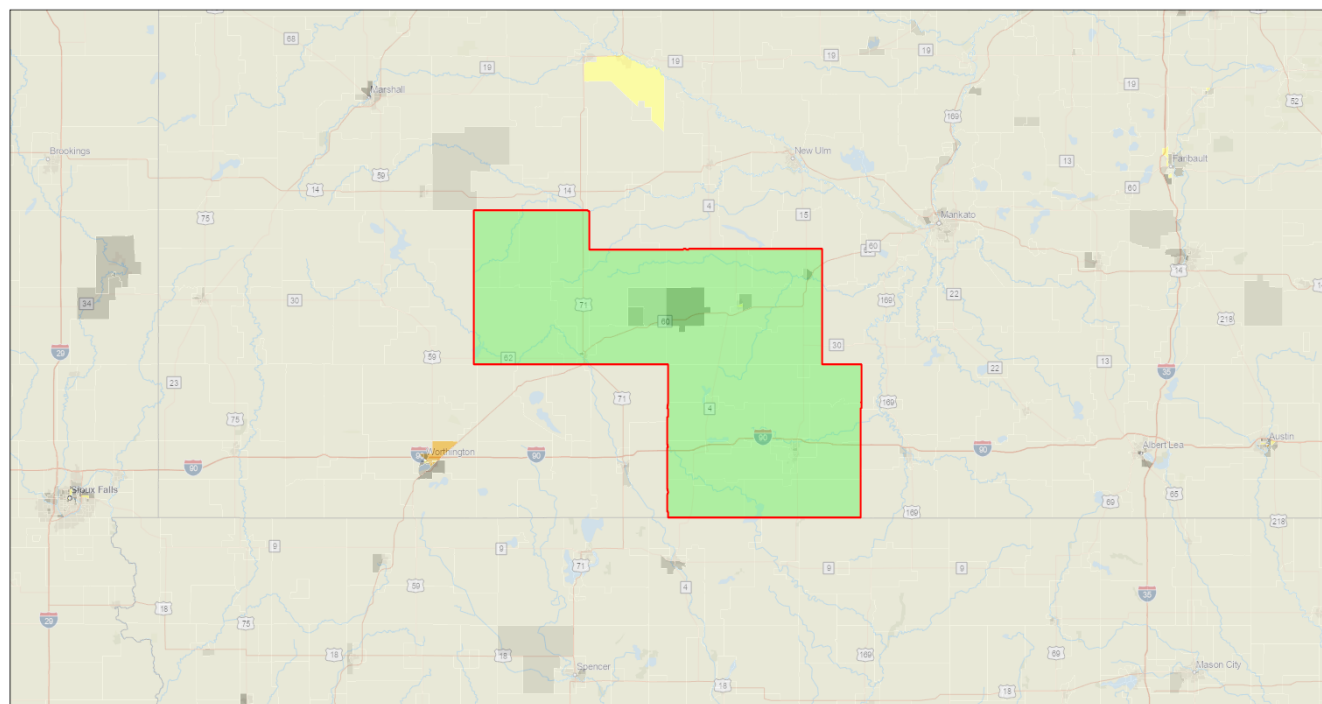


This report shows the values for environmental and demographic indicators and EJSCREEN indexes. It shows environmental and demographic raw data (e.g., the estimated concentration of ozone in the air), and also shows what percentile each raw data value represents. These percentiles provide perspective on how the selected block group or buffer area compares to the entire state, EPA region, or nation. For example, if a given location is at the 95th percentile nationwide, this means that only 5 percent of the US population has a higher block group value than the average person in the location being analyzed. The years for which the data are available, and the methods used, vary across these indicators. Important caveats and uncertainties apply to this screening-level information, so it is essential to understand the limitations on appropriate interpretations and applications of these indicators. Please see EJSCREEN documentation for discussion of these issues before using reports.

County: Cottonwood, Watonwan, Martin, MINNESOTA, EPA Region 5

Approximate Population: 42,309

Input Area (sq. miles): 1817.86



January 17, 2022

 Project 1
 EJSCREEN_Indexes
 Data not available
 Less than 50 percentile

50 - 60 percentile
 60 - 70 percentile
 70 - 80 percentile
 80 - 90 percentile
 90 - 95 percentile
 95 - 100 percentile

1:1,155,581
 0 10 20 40 mi
 0 15 30 60 km

Esri, Canada, Esri, HERE, Garmin, SafeGraph, FAO, METI/ANSA, USGS, EPA, NPS

Sites reporting to EPA

Superfund NPL

0

Hazardous Waste Treatment, Storage, and Disposal Facilities (TSDF)

1

EJSCREEN Report (Version 2020)

County: Cottonwood, Watonwan, Martin, MINNESOTA, EPA Region 5

Approximate Population: 42,309

Input Area (sq. miles): 1817.86

Selected Variables	Value	State Avg.	%ile in State	EPA Region Avg.	%ile in EPA Region	USA Avg.	%ile in USA
Environmental Indicators							
Particulate Matter (PM 2.5 in $\mu\text{g}/\text{m}^3$)	6.68	7.07	27	8.4	9	8.55	10
Ozone (ppb)	40.7	38.5	95	43.8	16	42.9	33
NATA* Diesel PM ($\mu\text{g}/\text{m}^3$)	0.126	0.333	17	0.446	<50th	0.478	<50th
NATA* Cancer Risk (lifetime risk per million)	21	24	38	26	<50th	32	<50th
NATA* Respiratory Hazard Index	0.26	0.31	36	0.34	<50th	0.44	<50th
Traffic Proximity and Volume (daily traffic count/distance to road)	38	440	28	530	23	750	21
Lead Paint Indicator (% Pre-1960 Housing)	0.58	0.31	81	0.38	73	0.28	81
Superfund Proximity (site count/km distance)	0.016	0.19	15	0.13	6	0.13	13
RMP Proximity (facility count/km distance)	1.8	0.77	87	0.83	86	0.74	88
Hazardous Waste Proximity (facility count/km distance)	0.095	1.7	24	2.4	12	5	13
Wastewater Discharge Indicator (toxicity-weighted concentration/m distance)	4.4E-05	1.7	58	2.4	40	9.4	50
Demographic Indicators							
Demographic Index	23%	22%	65	28%	53	36%	36
People of Color Population	14%	20%	53	25%	48	39%	28
Low Income Population	31%	25%	70	30%	58	33%	54
Linguistically Isolated Population	2%	2%	72	2%	72	4%	57
Population With Less Than High School Education	10%	7%	78	10%	63	13%	54
Population Under 5 years of age	6%	6%	53	6%	58	6%	56
Population over 64 years of age	22%	15%	81	16%	80	15%	81

* The National-Scale Air Toxics Assessment (NATA) is EPA's ongoing, comprehensive evaluation of air toxics in the United States. EPA developed the NATA to prioritize air toxics, emission sources, and locations of interest for further study. It is important to remember that NATA provides broad estimates of health risks over geographic areas of the country, not definitive risks to specific individuals or locations. More information on the NATA analysis can be found at: <https://www.epa.gov/national-air-toxics-assessment>.

For additional information, see: www.epa.gov/environmentaljustice

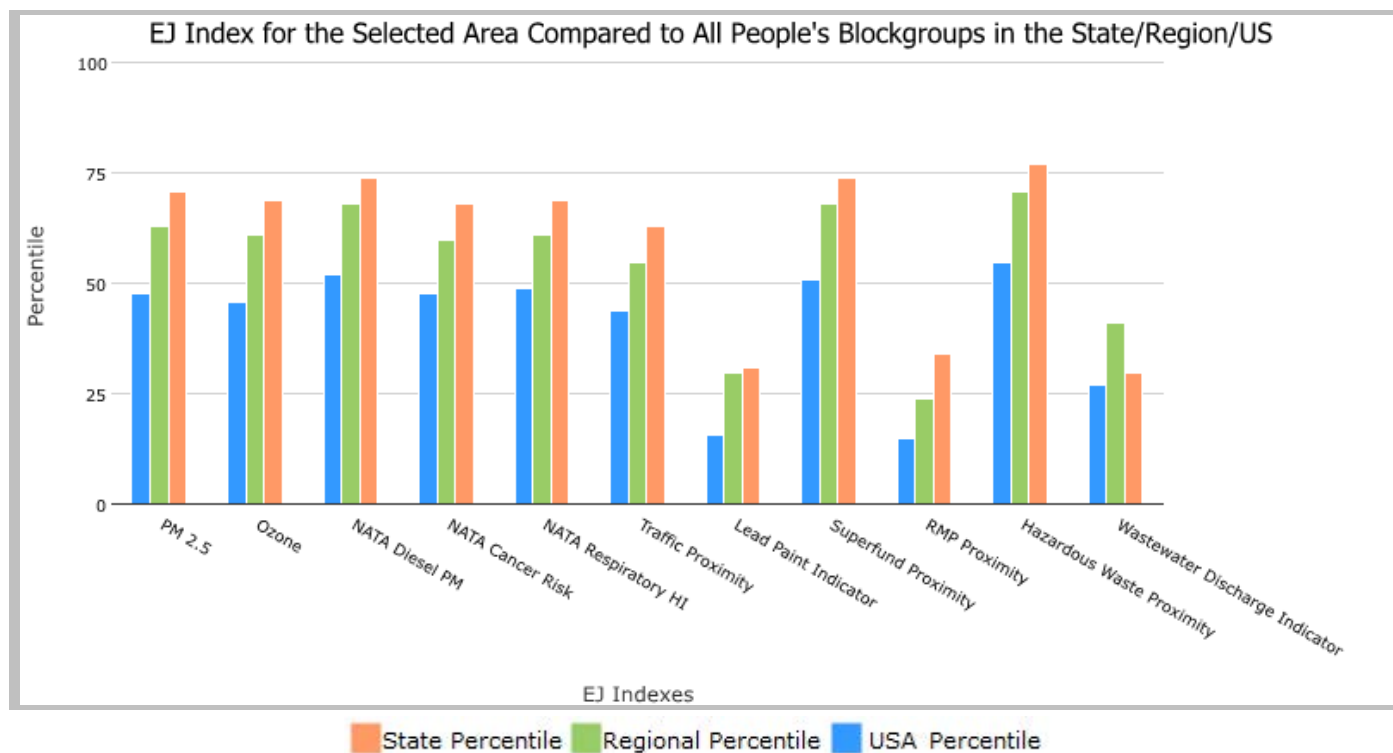
EJSCREEN is a screening tool for pre-decisional use only. It can help identify areas that may warrant additional consideration, analysis, or outreach. It does not provide a basis for decision-making, but it may help identify potential areas of EJ concern. Users should keep in mind that screening tools are subject to substantial uncertainty in their demographic and environmental data, particularly when looking at small geographic areas. Important caveats and uncertainties apply to this screening-level information, so it is essential to understand the limitations on appropriate interpretations and applications of these indicators. Please see EJSCREEN documentation for discussion of these issues before using reports. This screening tool does not provide data on every environmental impact and demographic factor that may be relevant to a particular location. EJSCREEN outputs should be supplemented with additional information and local knowledge before taking any action to address potential EJ concerns.

Tract: 27033270100,27165950300,27033270400,27091790100, MINNESOTA, EPA Region 5

Approximate Population: 11,349

Input Area (sq. miles): 697.58

Selected Variables	State Percentile	EPA Region Percentile	USA Percentile
EJ Indexes			
EJ Index for PM _{2.5}	71	63	48
EJ Index for Ozone	69	61	46
EJ Index for NATA* Diesel PM	74	68	52
EJ Index for NATA* Air Toxics Cancer Risk	68	60	48
EJ Index for NATA* Respiratory Hazard Index	69	61	49
EJ Index for Traffic Proximity and Volume	63	55	44
EJ Index for Lead Paint Indicator	31	30	16
EJ Index for Superfund Proximity	74	68	51
EJ Index for RMP Proximity	34	24	15
EJ Index for Hazardous Waste Proximity	77	71	55
EJ Index for Wastewater Discharge Indicator	30	41	27

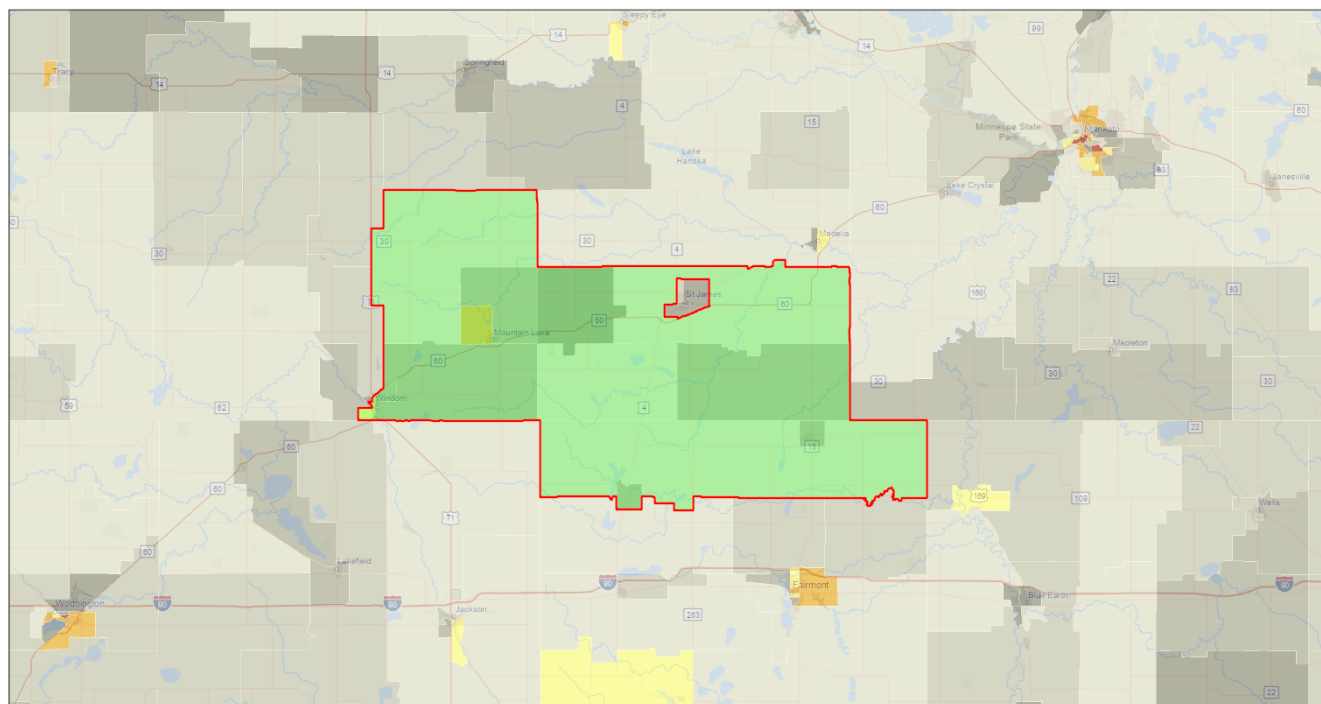


This report shows the values for environmental and demographic indicators and EJSCREEN indexes. It shows environmental and demographic raw data (e.g., the estimated concentration of ozone in the air), and also shows what percentile each raw data value represents. These percentiles provide perspective on how the selected block group or buffer area compares to the entire state, EPA region, or nation. For example, if a given location is at the 95th percentile nationwide, this means that only 5 percent of the US population has a higher block group value than the average person in the location being analyzed. The years for which the data are available, and the methods used, vary across these indicators. Important caveats and uncertainties apply to this screening-level information, so it is essential to understand the limitations on appropriate interpretations and applications of these indicators. Please see EJSCREEN documentation for discussion of these issues before using reports.

Tract: 27033270100,27165950300,27033270400,27091790100, MINNESOTA, EPA Region 5

Approximate Population: 11,349

Input Area (sq. miles): 697.58



January 17, 2022

Project 1
EJSCREEN_Indexes
Data not available
Less than 50 percentile
50 - 60 percentile
60 - 70 percentile
70 - 80 percentile
80 - 90 percentile
90 - 95 percentile
95 - 100 percentile

1:577,791
0 5 10 20 mi
0 5 10 20 km

Esri, Canada, Esri, HERE, Garmin, SafeGraph, FAO, METI/NASA, USGS, EPA, NPS

Sites reporting to EPA

Superfund NPL

0

Hazardous Waste Treatment, Storage, and Disposal Facilities (TSDF)

0

EJSCREEN Report (Version 2020)

Tract: 27033270100,27165950300,27033270400,27091790100, MINNESOTA, EPA Region 5

Approximate Population: 11,349

Input Area (sq. miles): 697.58

Selected Variables	Value	State Avg.	%ile in State	EPA Region Avg.	%ile in EPA Region	USA Avg.	%ile in USA
Environmental Indicators							
Particulate Matter (PM 2.5 in $\mu\text{g}/\text{m}^3$)	6.59	7.07	25	8.4	8	8.55	9
Ozone (ppb)	40.6	38.5	93	43.8	15	42.9	32
NATA* Diesel PM ($\mu\text{g}/\text{m}^3$)	0.114	0.333	13	0.446	<50th	0.478	<50th
NATA* Cancer Risk (lifetime risk per million)	24	24	52	26	<50th	32	<50th
NATA* Respiratory Hazard Index	0.29	0.31	45	0.34	<50th	0.44	<50th
Traffic Proximity and Volume (daily traffic count/distance to road)	50	440	32	530	27	750	24
Lead Paint Indicator (% Pre-1960 Housing)	0.6	0.31	82	0.38	75	0.28	82
Superfund Proximity (site count/km distance)	0.015	0.19	15	0.13	5	0.13	12
RMP Proximity (facility count/km distance)	1.3	0.77	80	0.83	79	0.74	82
Hazardous Waste Proximity (facility count/km distance)	0.037	1.7	9	2.4	2	5	3
Wastewater Discharge Indicator (toxicity-weighted concentration/m distance)	0.00015	1.7	64	2.4	45	9.4	55
Demographic Indicators							
Demographic Index	22%	22%	63	28%	52	36%	34
People of Color Population	13%	20%	50	25%	46	39%	26
Low Income Population	31%	25%	70	30%	58	33%	54
Linguistically Isolated Population	2%	2%	75	2%	74	4%	60
Population With Less Than High School Education	12%	7%	82	10%	69	13%	59
Population Under 5 years of age	7%	6%	58	6%	63	6%	61
Population over 64 years of age	23%	15%	85	16%	84	15%	84

* The National-Scale Air Toxics Assessment (NATA) is EPA's ongoing, comprehensive evaluation of air toxics in the United States. EPA developed the NATA to prioritize air toxics, emission sources, and locations of interest for further study. It is important to remember that NATA provides broad estimates of health risks over geographic areas of the country, not definitive risks to specific individuals or locations. More information on the NATA analysis can be found at: <https://www.epa.gov/national-air-toxics-assessment>.

For additional information, see: www.epa.gov/environmentaljustice

EJSCREEN is a screening tool for pre-decisional use only. It can help identify areas that may warrant additional consideration, analysis, or outreach. It does not provide a basis for decision-making, but it may help identify potential areas of EJ concern. Users should keep in mind that screening tools are subject to substantial uncertainty in their demographic and environmental data, particularly when looking at small geographic areas. Important caveats and uncertainties apply to this screening-level information, so it is essential to understand the limitations on appropriate interpretations and applications of these indicators. Please see EJSCREEN documentation for discussion of these issues before using reports. This screening tool does not provide data on every environmental impact and demographic factor that may be relevant to a particular location. EJSCREEN outputs should be supplemented with additional information and local knowledge before taking any action to address potential EJ concerns.

Location: Cottonwood County
 Ring (buffer): 0-mile radius
 Description:

Summary of ACS Estimates		2014 - 2018	
Population		11,372	
Population Density (per sq. mile)		18	
People of Color Population		1,531	
% People of Color Population		13%	
Households		4,850	
Housing Units		5,435	
Housing Units Built Before 1950		2,092	
Per Capita Income		27,209	
Land Area (sq. miles) (Source: SF1)		639.97	
% Land Area		99%	
Water Area (sq. miles) (Source: SF1)		8.59	
% Water Area		1%	

	2014 - 2018 ACS Estimates	Percent	MOE (±)
Population by Race			
Total	11,372	100%	0
Population Reporting One Race	11,205	99%	496
White	10,209	90%	173
Black	85	1%	37
American Indian	37	0%	29
Asian	398	3%	55
Pacific Islander	26	0%	31
Some Other Race	450	4%	171
Population Reporting Two or More Races	167	1%	49
Total Hispanic Population	844	7%	0
Total Non-Hispanic Population	10,528		
White Alone	9,841	87%	5
Black Alone	76	1%	29
American Indian Alone	32	0%	26
Non-Hispanic Asian Alone	387	3%	53
Pacific Islander Alone	26	0%	31
Other Race Alone	4	0%	5
Two or More Races Alone	162	1%	48
Population by Sex			
Male	5,662	50%	73
Female	5,710	50%	73
Population by Age			
Age 0-4	778	7%	47
Age 0-17	2,756	24%	152
Age 18+	8,616	76%	289
Age 65+	2,556	22%	163

Data Note: Detail may not sum to totals due to rounding. Hispanic population can be of any race.

N/A means not available. **Source:** U.S. Census Bureau, American Community Survey (ACS) 2014 - 2018

Location: Cottonwood County
Ring (buffer): 0-mile radius
Description:

	2014 - 2018 ACS Estimates	Percent	MOE (±)
Population 25+ by Educational Attainment			
Total	7,801	100%	66
Less than 9th Grade	338	4%	83
9th - 12th Grade, No Diploma	414	5%	93
High School Graduate	2,759	35%	175
Some College, No Degree	2,640	34%	204
Associate Degree	793	10%	104
Bachelor's Degree or more	1,650	21%	166
Population Age 5+ Years by Ability to Speak English			
Total	10,594	100%	24
Speak only English	9,644	91%	135
Non-English at Home ¹⁺²⁺³⁺⁴	950	9%	129
¹ Speak English "very well"	601	6%	117
² Speak English "well"	142	1%	57
³ Speak English "not well"	177	2%	69
⁴ Speak English "not at all"	30	0%	32
³⁺⁴ Speak English "less than well"	207	2%	75
²⁺³⁺⁴ Speak English "less than very well"	349	3%	93
Linguistically Isolated Households*			
Total	74	100%	32
Speak Spanish	11	15%	15
Speak Other Indo-European Languages	5	7%	7
Speak Asian-Pacific Island Languages	58	78%	24
Speak Other Languages	0	0%	14
Households by Household Income			
Household Income Base	4,850	100%	148
< \$15,000	492	10%	95
\$15,000 - \$25,000	520	11%	112
\$25,000 - \$50,000	1,291	27%	149
\$50,000 - \$75,000	1,023	21%	125
\$75,000 +	1,524	31%	148
Occupied Housing Units by Tenure			
Total	4,850	100%	148
Owner Occupied	3,792	78%	129
Renter Occupied	1,058	22%	142
Employed Population Age 16+ Years			
Total	8,916	100%	47
In Labor Force	5,624	63%	181
Civilian Unemployed in Labor Force	229	3%	67
Not In Labor Force	3,292	37%	179

Data Note: Detail may not sum to totals due to rounding. Hispanic population can be of anyrace.

N/A means not available. **Source:** U.S. Census Bureau, American Community Survey (ACS)

*Households in which no one 14 and over speaks English "very well" or speaks English only.

Location: Cottonwood County

Ring (buffer): 0-mile radius

Description:

	2014 - 2018 ACS Estimates	Percent	MOE (±)
Population by Language Spoken at Home*			
Total (persons age 5 and above)	10,594	100%	24
English	9,644	91%	126
Spanish	492	5%	82
French	1	0%	13
French Creole	N/A	N/A	N/A
Italian	N/A	N/A	N/A
Portuguese	N/A	N/A	N/A
German	121	1%	66
Yiddish	N/A	N/A	N/A
Other West Germanic	N/A	N/A	N/A
Scandinavian	N/A	N/A	N/A
Greek	N/A	N/A	N/A
Russian	N/A	N/A	N/A
Polish	N/A	N/A	N/A
Serbo-Croatian	N/A	N/A	N/A
Other Slavic	N/A	N/A	N/A
Armenian	N/A	N/A	N/A
Persian	N/A	N/A	N/A
Gujarathi	N/A	N/A	N/A
Hindi	N/A	N/A	N/A
Urdu	N/A	N/A	N/A
Other Indic	N/A	N/A	N/A
Other Indo-European	11	0%	13
Chinese	0	0%	14
Japanese	N/A	N/A	N/A
Korean	0	0%	14
Mon-Khmer, Cambodian	N/A	N/A	N/A
Hmong	N/A	N/A	N/A
Thai	N/A	N/A	N/A
Laotian	N/A	N/A	N/A
Vietnamese	18	0%	24
Other Asian	288	3%	69
Tagalog	2	0%	4
Other Pacific Island	N/A	N/A	N/A
Navajo	N/A	N/A	N/A
Other Native American	N/A	N/A	N/A
Hungarian	N/A	N/A	N/A
Arabic	17	0%	26
Hebrew	N/A	N/A	N/A
African	N/A	N/A	N/A
Other and non-specified	0	0%	14
Total Non-English	950	9%	128

Data Note: Detail may not sum to totals due to rounding. Hispanic population can be of any race.

N/A means not available. **Source:** U.S. Census Bureau, American Community Survey (ACS) 2014 - 2018.

*Population by Language Spoken at Home is available at the census tract summary level and up.

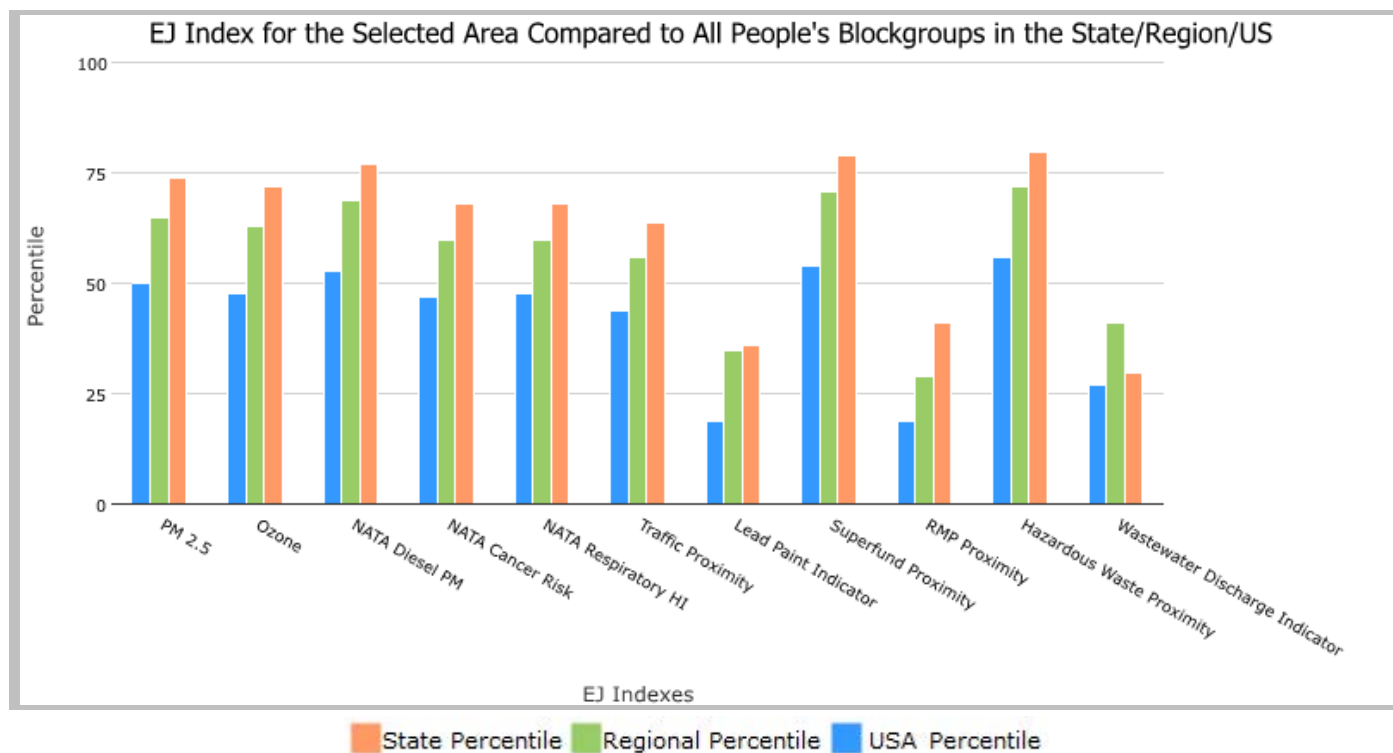
EJSCREEN Report (Version 2020)

County: Cottonwood, MINNESOTA, EPA Region 5

Approximate Population: 11,372

Input Area (sq. miles): 648.56

Selected Variables	State Percentile	EPA Region Percentile	USA Percentile
EJ Indexes			
EJ Index for PM _{2.5}	74	65	50
EJ Index for Ozone	72	63	48
EJ Index for NATA* Diesel PM	77	69	53
EJ Index for NATA* Air Toxics Cancer Risk	68	60	47
EJ Index for NATA* Respiratory Hazard Index	68	60	48
EJ Index for Traffic Proximity and Volume	64	56	44
EJ Index for Lead Paint Indicator	36	35	19
EJ Index for Superfund Proximity	79	71	54
EJ Index for RMP Proximity	41	29	19
EJ Index for Hazardous Waste Proximity	80	72	56
EJ Index for Wastewater Discharge Indicator	30	41	27



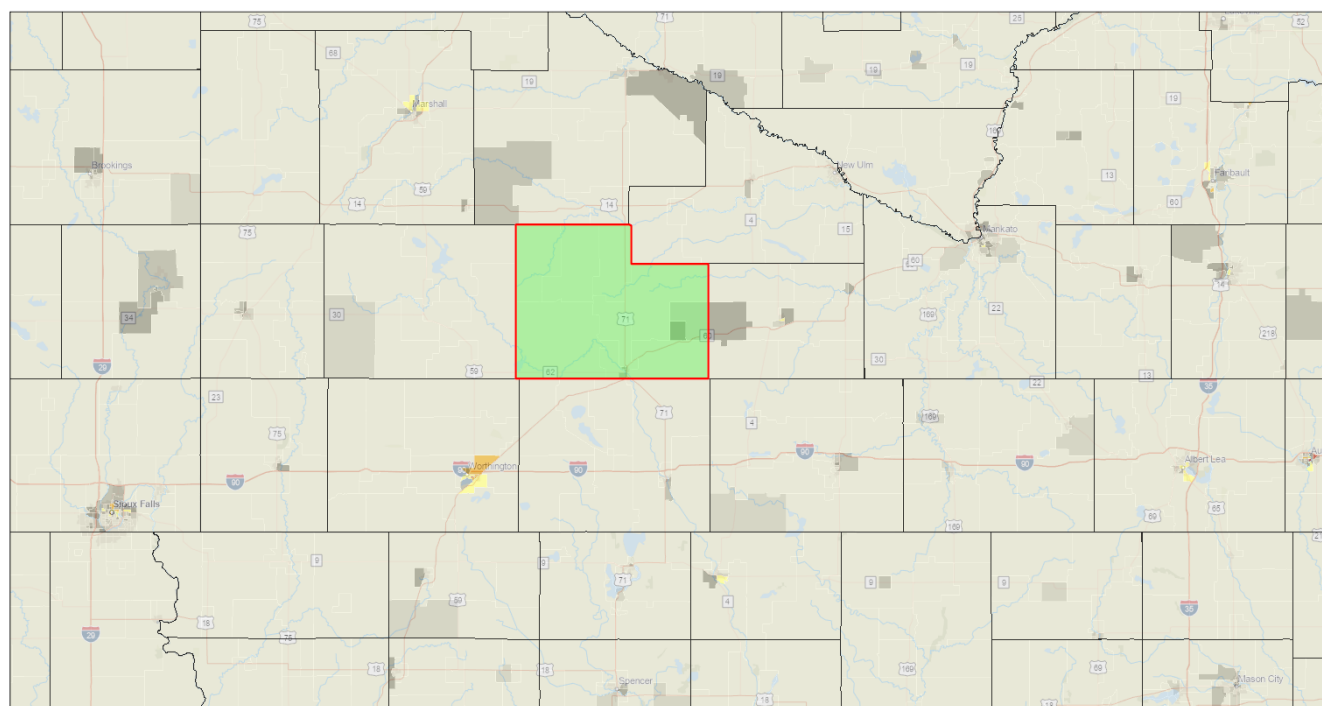
This report shows the values for environmental and demographic indicators and EJSCREEN indexes. It shows environmental and demographic raw data (e.g., the estimated concentration of ozone in the air), and also shows what percentile each raw data value represents. These percentiles provide perspective on how the selected block group or buffer area compares to the entire state, EPA region, or nation. For example, if a given location is at the 95th percentile nationwide, this means that only 5 percent of the US population has a higher block group value than the average person in the location being analyzed. The years for which the data are available, and the methods used, vary across these indicators. Important caveats and uncertainties apply to this screening-level information, so it is essential to understand the limitations on appropriate interpretations and applications of these indicators. Please see EJSCREEN documentation for discussion of these issues before using reports.

EJSCREEN Report (Version 2020)

County: Cottonwood, MINNESOTA, EPA Region 5

Approximate Population: 11,372

Input Area (sq. miles): 648.56



January 17, 2022

 Project 1
 Counties
 Less than 50 percentile
 50 - 60 percentile
 60 - 70 percentile
 70 - 80 percentile
 80 - 90 percentile
 90 - 95 percentile
 95 - 100 percentile
 Data not available

1:1,155,581
 0 10 20 40 mi
 0 15 30 60 km

Esri, Canada, Esri, HERE, Garmin, SafeGraph, FAO, METI/NASA, USGS, EPA, NPS, EPA OEI

Sites reporting to EPA

Superfund NPL	0
Hazardous Waste Treatment, Storage, and Disposal Facilities (TSDF)	0

EJSCREEN Report (Version 2020)

County: Cottonwood, MINNESOTA, EPA Region 5

Approximate Population: 11,372

Input Area (sq. miles): 648.56

Selected Variables	Value	State Avg.	%ile in State	EPA Region Avg.	%ile in EPA Region	USA Avg.	%ile in USA
Environmental Indicators							
Particulate Matter (PM 2.5 in $\mu\text{g}/\text{m}^3$)	6.33	7.07	18	8.4	6	8.55	6
Ozone (ppb)	40.7	38.5	95	43.8	16	42.9	33
NATA* Diesel PM ($\mu\text{g}/\text{m}^3$)	0.108	0.333	10	0.446	<50th	0.478	<50th
NATA* Cancer Risk (lifetime risk per million)	28	24	65	26	60-70th	32	<50th
NATA* Respiratory Hazard Index	0.33	0.31	56	0.34	50-60th	0.44	<50th
Traffic Proximity and Volume (daily traffic count/distance to road)	51	440	32	530	27	750	25
Lead Paint Indicator (% Pre-1960 Housing)	0.55	0.31	79	0.38	72	0.28	80
Superfund Proximity (site count/km distance)	0.011	0.19	8	0.13	1	0.13	6
RMP Proximity (facility count/km distance)	1.1	0.77	75	0.83	75	0.74	79
Hazardous Waste Proximity (facility count/km distance)	0.03	1.7	6	2.4	1	5	2
Wastewater Discharge Indicator (toxicity-weighted concentration/m distance)	0.00016	1.7	64	2.4	46	9.4	56
Demographic Indicators							
Demographic Index	23%	22%	65	28%	54	36%	36
People of Color Population	13%	20%	52	25%	48	39%	27
Low Income Population	32%	25%	72	30%	60	33%	56
Linguistically Isolated Population	2%	2%	68	2%	68	4%	53
Population With Less Than High School Education	10%	7%	75	10%	61	13%	52
Population Under 5 years of age	7%	6%	59	6%	64	6%	62
Population over 64 years of age	22%	15%	83	16%	82	15%	83

* The National-Scale Air Toxics Assessment (NATA) is EPA's ongoing, comprehensive evaluation of air toxics in the United States. EPA developed the NATA to prioritize air toxics, emission sources, and locations of interest for further study. It is important to remember that NATA provides broad estimates of health risks over geographic areas of the country, not definitive risks to specific individuals or locations. More information on the NATA analysis can be found at: <https://www.epa.gov/national-air-toxics-assessment>.

For additional information, see: www.epa.gov/environmentaljustice

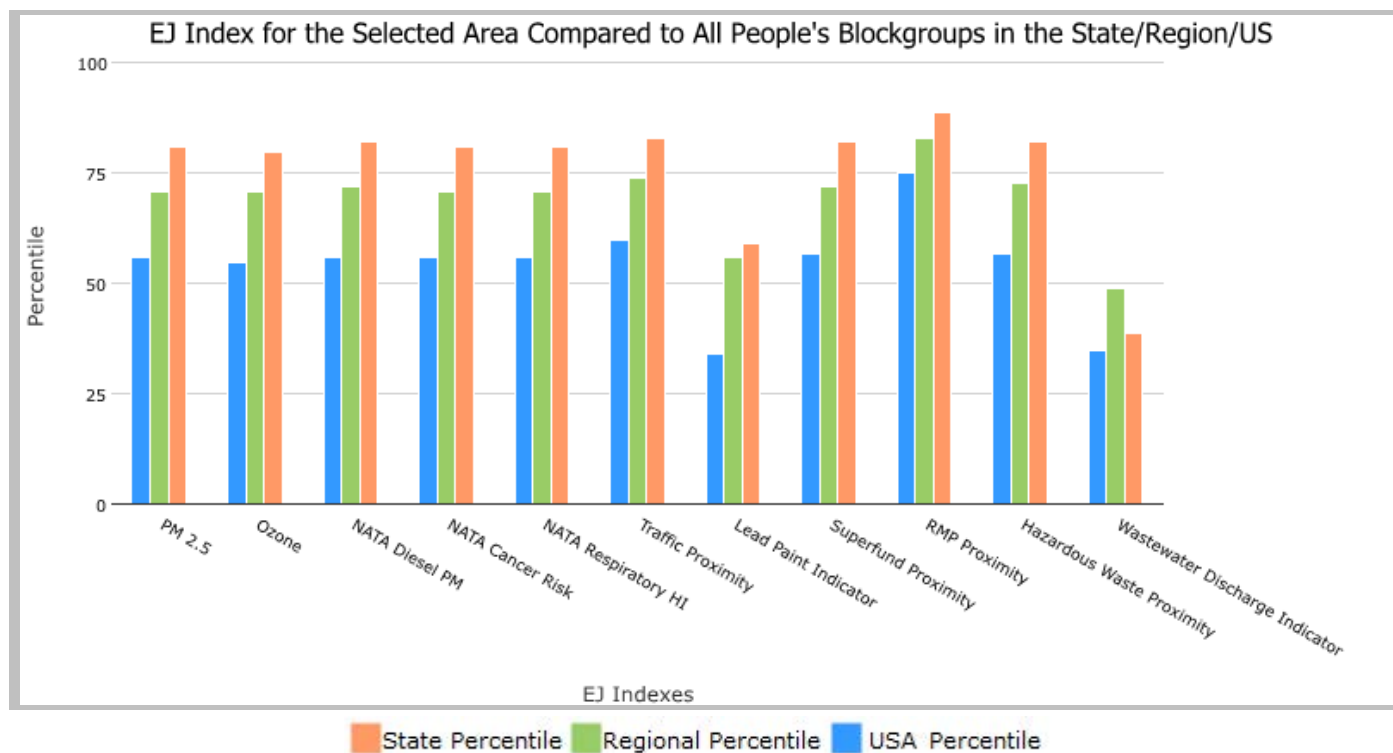
EJSCREEN is a screening tool for pre-decisional use only. It can help identify areas that may warrant additional consideration, analysis, or outreach. It does not provide a basis for decision-making, but it may help identify potential areas of EJ concern. Users should keep in mind that screening tools are subject to substantial uncertainty in their demographic and environmental data, particularly when looking at small geographic areas. Important caveats and uncertainties apply to this screening-level information, so it is essential to understand the limitations on appropriate interpretations and applications of these indicators. Please see EJSCREEN documentation for discussion of these issues before using reports. This screening tool does not provide data on every environmental impact and demographic factor that may be relevant to a particular location. EJSCREEN outputs should be supplemented with additional information and local knowledge before taking any action to address potential EJ concerns.

Tract: 27033270100,27165950100,27165950300, MINNESOTA, EPA Region 5

Approximate Population: 9,254

Input Area (sq. miles): 581.43

Selected Variables	State Percentile	EPA Region Percentile	USA Percentile
EJ Indexes			
EJ Index for PM _{2.5}	81	71	56
EJ Index for Ozone	80	71	55
EJ Index for NATA* Diesel PM	82	72	56
EJ Index for NATA* Air Toxics Cancer Risk	81	71	56
EJ Index for NATA* Respiratory Hazard Index	81	71	56
EJ Index for Traffic Proximity and Volume	83	74	60
EJ Index for Lead Paint Indicator	59	56	34
EJ Index for Superfund Proximity	82	72	57
EJ Index for RMP Proximity	89	83	75
EJ Index for Hazardous Waste Proximity	82	73	57
EJ Index for Wastewater Discharge Indicator	39	49	35

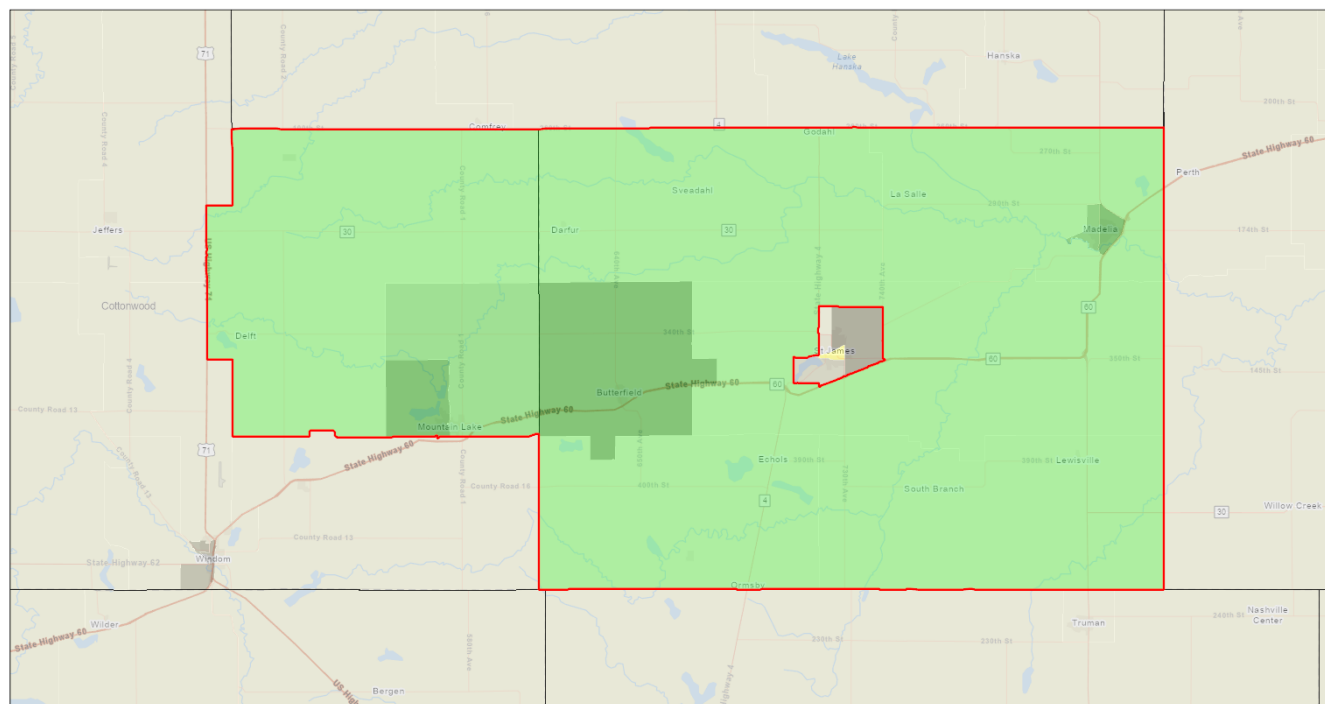


This report shows the values for environmental and demographic indicators and EJSCREEN indexes. It shows environmental and demographic raw data (e.g., the estimated concentration of ozone in the air), and also shows what percentile each raw data value represents. These percentiles provide perspective on how the selected block group or buffer area compares to the entire state, EPA region, or nation. For example, if a given location is at the 95th percentile nationwide, this means that only 5 percent of the US population has a higher block group value than the average person in the location being analyzed. The years for which the data are available, and the methods used, vary across these indicators. Important caveats and uncertainties apply to this screening-level information, so it is essential to understand the limitations on appropriate interpretations and applications of these indicators. Please see EJSCREEN documentation for discussion of these issues before using reports.

Tract: 27033270100,27165950100,27165950300, MINNESOTA, EPA Region 5

Approximate Population: 9,254

Input Area (sq. miles): 581.43



January 17, 2022

Project 1 EJSCREEN_Indexes
Counties Data not available
Less than 50 percentile 50 -60 percentile 60 -70 percentile 70 -80 percentile 80 - 90 percentile 90 - 95 percentile 95 - 100 percentile

1:288,895
0 2.5 5 10 mi
0 4 8 16 km

Esri Canada, Esri, HERE, Garmin, SafeGraph, METINASA, USGS, EPA, NPS, USDA, EPA OEI

Sites reporting to EPA

Superfund NPL	0
Hazardous Waste Treatment, Storage, and Disposal Facilities (TSDF)	0

EJSCREEN Report (Version 2020)

Tract: 27033270100,27165950100,27165950300, MINNESOTA, EPA Region 5

Approximate Population: 9,254

Input Area (sq. miles): 581.43

Selected Variables	Value	State Avg.	%ile in State	EPA Region Avg.	%ile in EPA Region	USA Avg.	%ile in USA
Environmental Indicators							
Particulate Matter (PM 2.5 in $\mu\text{g}/\text{m}^3$)	6.57	7.07	25	8.4	8	8.55	9
Ozone (ppb)	40.4	38.5	91	43.8	15	42.9	31
NATA* Diesel PM ($\mu\text{g}/\text{m}^3$)	0.114	0.333	13	0.446	<50th	0.478	<50th
NATA* Cancer Risk (lifetime risk per million)	22	24	41	26	<50th	32	<50th
NATA* Respiratory Hazard Index	0.26	0.31	38	0.34	<50th	0.44	<50th
Traffic Proximity and Volume (daily traffic count/distance to road)	10	440	15	530	13	750	11
Lead Paint Indicator (% Pre-1960 Housing)	0.58	0.31	81	0.38	73	0.28	81
Superfund Proximity (site count/km distance)	0.021	0.19	21	0.13	11	0.13	19
RMP Proximity (facility count/km distance)	2.2	0.77	93	0.83	90	0.74	92
Hazardous Waste Proximity (facility count/km distance)	0.032	1.7	7	2.4	2	5	2
Wastewater Discharge Indicator (toxicity-weighted concentration/m distance)	3.7E-05	1.7	58	2.4	40	9.4	49
Demographic Indicators							
Demographic Index	27%	22%	74	28%	63	36%	45
People of Color Population	22%	20%	68	25%	61	39%	39
Low Income Population	33%	25%	73	30%	61	33%	57
Linguistically Isolated Population	5%	2%	85	2%	85	4%	73
Population With Less Than High School Education	13%	7%	84	10%	72	13%	62
Population Under 5 years of age	8%	6%	71	6%	74	6%	72
Population over 64 years of age	21%	15%	78	16%	76	15%	78

* The National-Scale Air Toxics Assessment (NATA) is EPA's ongoing, comprehensive evaluation of air toxics in the United States. EPA developed the NATA to prioritize air toxics, emission sources, and locations of interest for further study. It is important to remember that NATA provides broad estimates of health risks over geographic areas of the country, not definitive risks to specific individuals or locations. More information on the NATA analysis can be found at: <https://www.epa.gov/national-air-toxics-assessment>.

For additional information, see: www.epa.gov/environmentaljustice

EJSCREEN is a screening tool for pre-decisional use only. It can help identify areas that may warrant additional consideration, analysis, or outreach. It does not provide a basis for decision-making, but it may help identify potential areas of EJ concern. Users should keep in mind that screening tools are subject to substantial uncertainty in their demographic and environmental data, particularly when looking at small geographic areas. Important caveats and uncertainties apply to this screening-level information, so it is essential to understand the limitations on appropriate interpretations and applications of these indicators. Please see EJSCREEN documentation for discussion of these issues before using reports. This screening tool does not provide data on every environmental impact and demographic factor that may be relevant to a particular location. EJSCREEN outputs should be supplemented with additional information and local knowledge before taking any action to address potential EJ concerns.