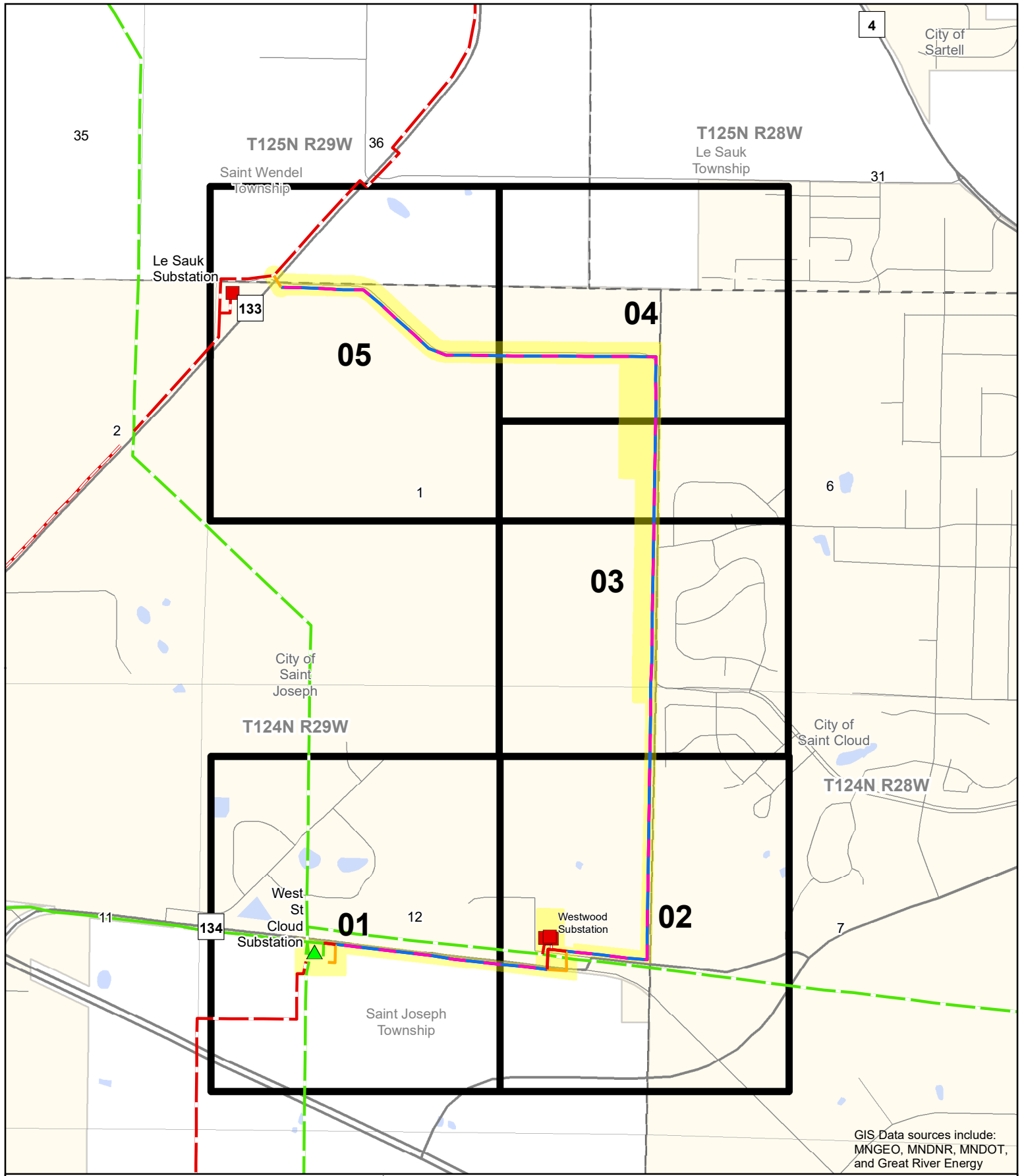


**Appendix A    Maps**

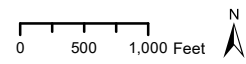


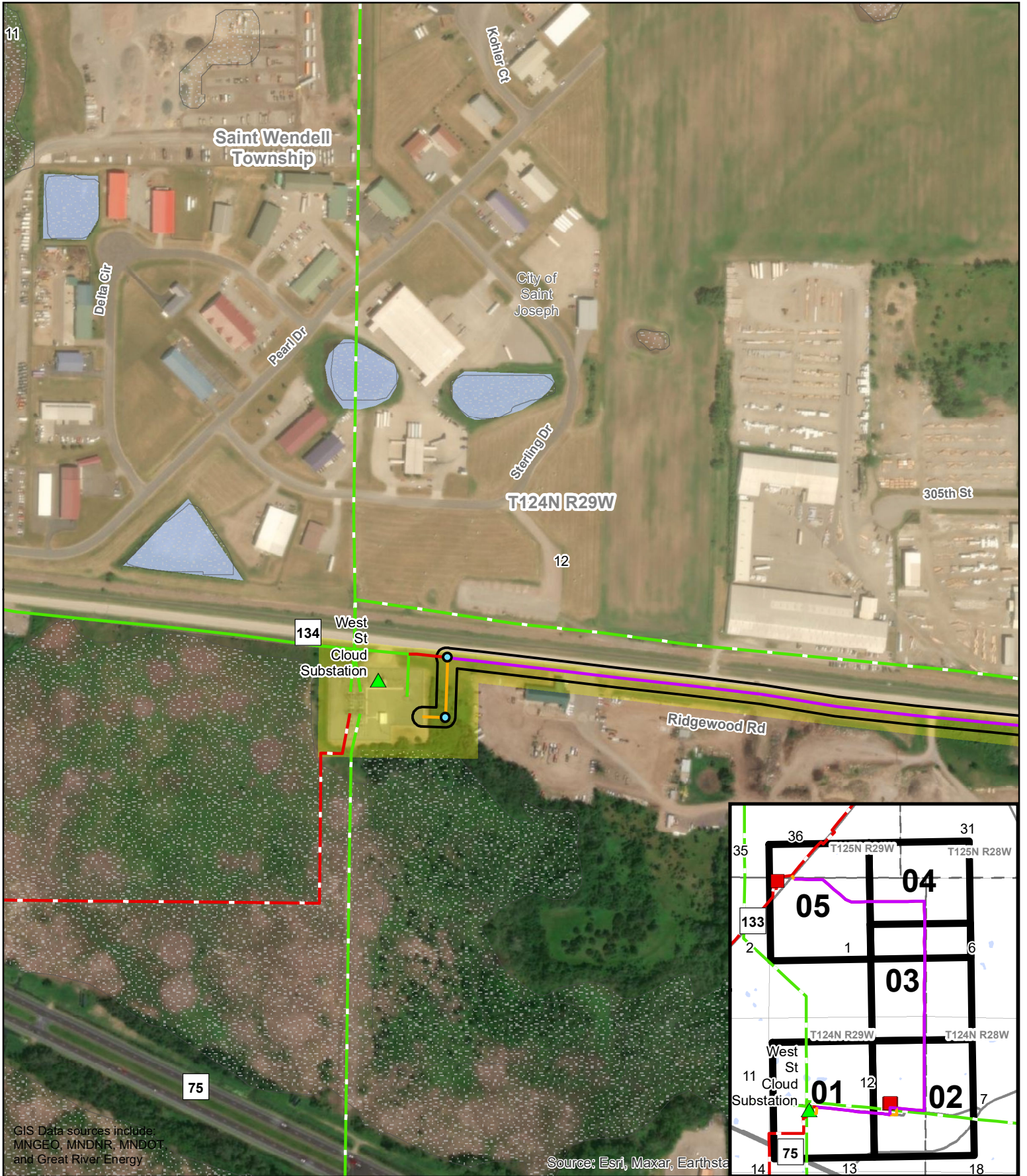
GIS Data sources include:  
MNGEO, MNDNR, MNDOT,  
and Great River Energy

- Great River Energy**
- Proposed 115-kV transmission line replacing existing 69-kV transmission line
  - Proposed 115-kV transmission line
  - Existing 69-kV transmission line to be removed
  - Existing de-energized 69-kV transmission line
  - Existing 115-kV transmission line

- ▲ Existing transmission substation
  - Existing distribution substation
  - Project route
- Non-GRE Transmission**
- Existing 69-kV transmission line
  - Existing 115-kV transmission line

**ST-WW 69-kV to 115-kV Conversion**











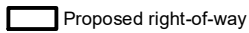
GIS Data sources include:  
 MNGEO, MNDNR, MNDOT,  
 and Great River Energy

Source: Esri, Maxar, Earthstar

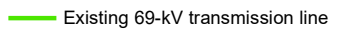
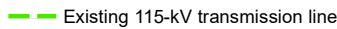
**Great River Energy**

-  Proposed 115-kV transmission line replacing existing 69-kV transmission line
-  Proposed 115-kV transmission line
-  Existing 69-kV transmission line to be removed
-  Existing 115-kV transmission line
-  Existing transmission substation
-  Potential deadend structure

 Project route

 Proposed right-of-way

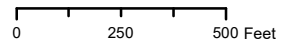
**Non-GRE Transmission**

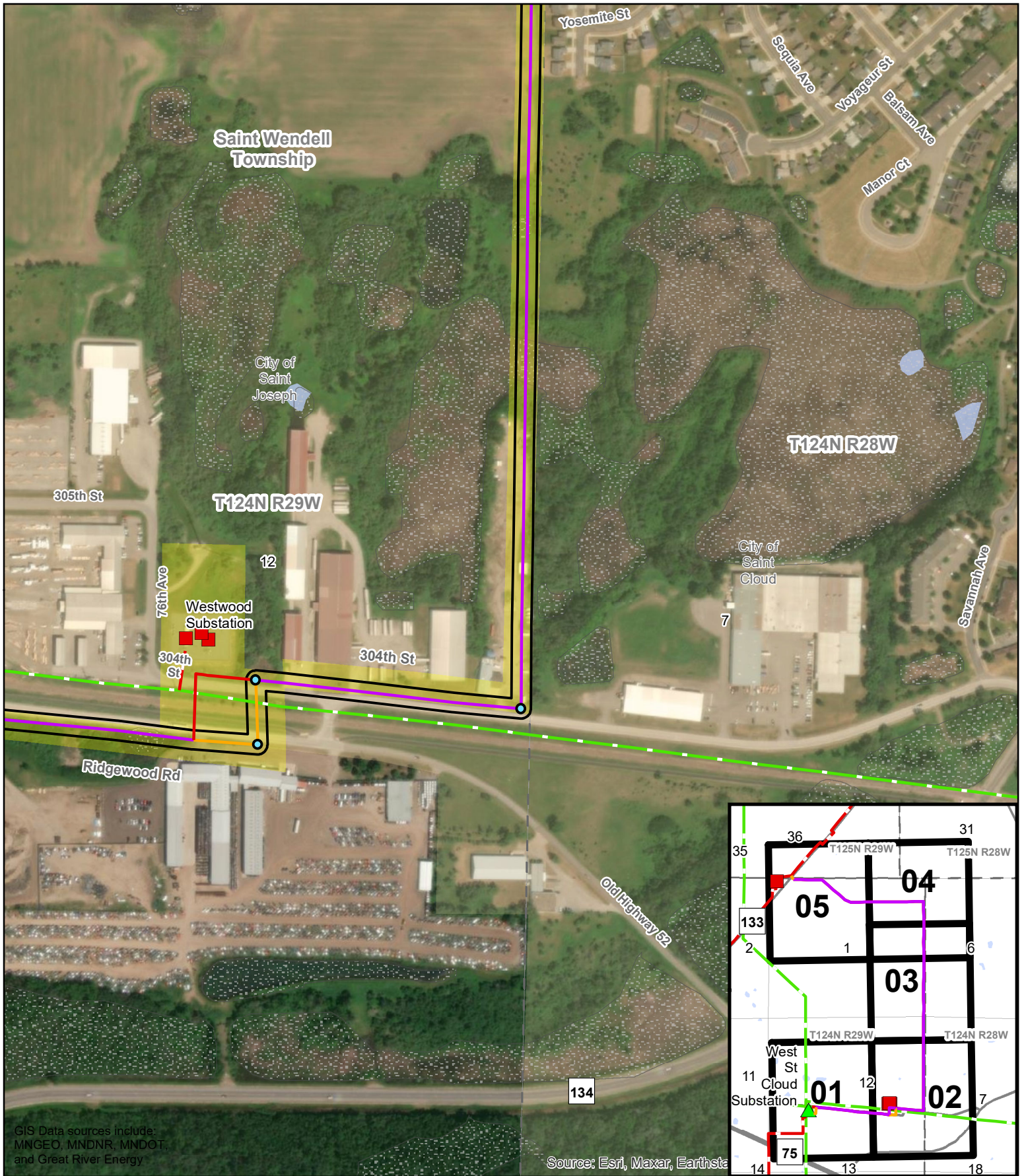
-  Existing 69-kV transmission line
-  Existing 115-kV transmission line

**NWI Wetlands**

 Wetlands

**ST-WW 69-kV to  
 115-kV Conversion**  
 Page 1 of 5



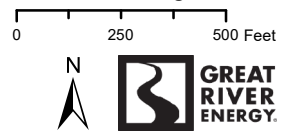


GIS Data sources include:  
 MNGEO, MNDNR, MNDOT,  
 and Great River Energy

Source: Esri, Maxar, Earthstar

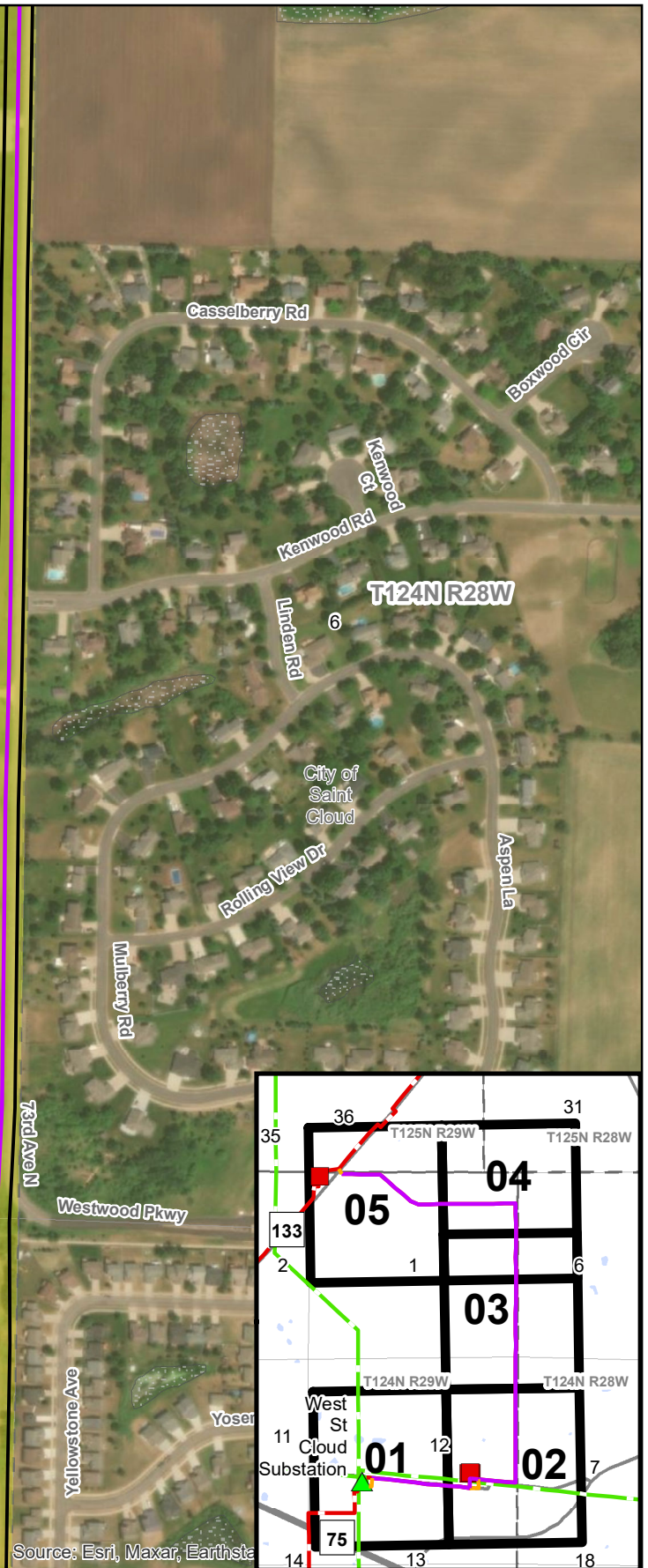
- |  |                                   |
|--|-----------------------------------|
| <b>Great River Energy</b>  | Project route                     |
| Proposed 115-kV transmission line replacing existing 69-kV transmission line | Proposed right-of-way             |
| Proposed 115-kV transmission line  | <b>Non-GRE Transmission</b>       |
| Existing 69-kV transmission line to be removed                               | Existing 115-kV transmission line |
| Existing 115-kV transmission line  | <b>NWI Wetlands</b>               |
| Existing distribution substation   | Wetlands                          |
| Potential deadend structure  |                                   |

**ST-WW 69-kV to  
 115-kV Conversion**  
 Page 2 of 5

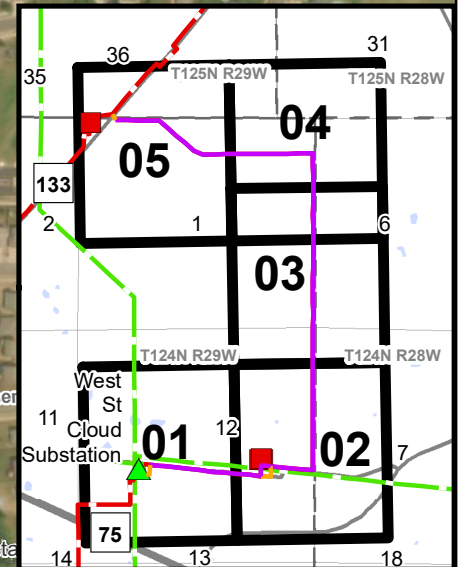




GIS Data sources include:  
MNGEO, MNDNR, MNDOT,  
and Great River Energy



Source: Esri, Maxar, Earthstar



**Great River Energy**

Proposed 115-kV transmission line replacing existing 69-kV transmission line

Project route

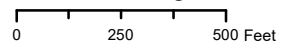
Proposed right-of-way

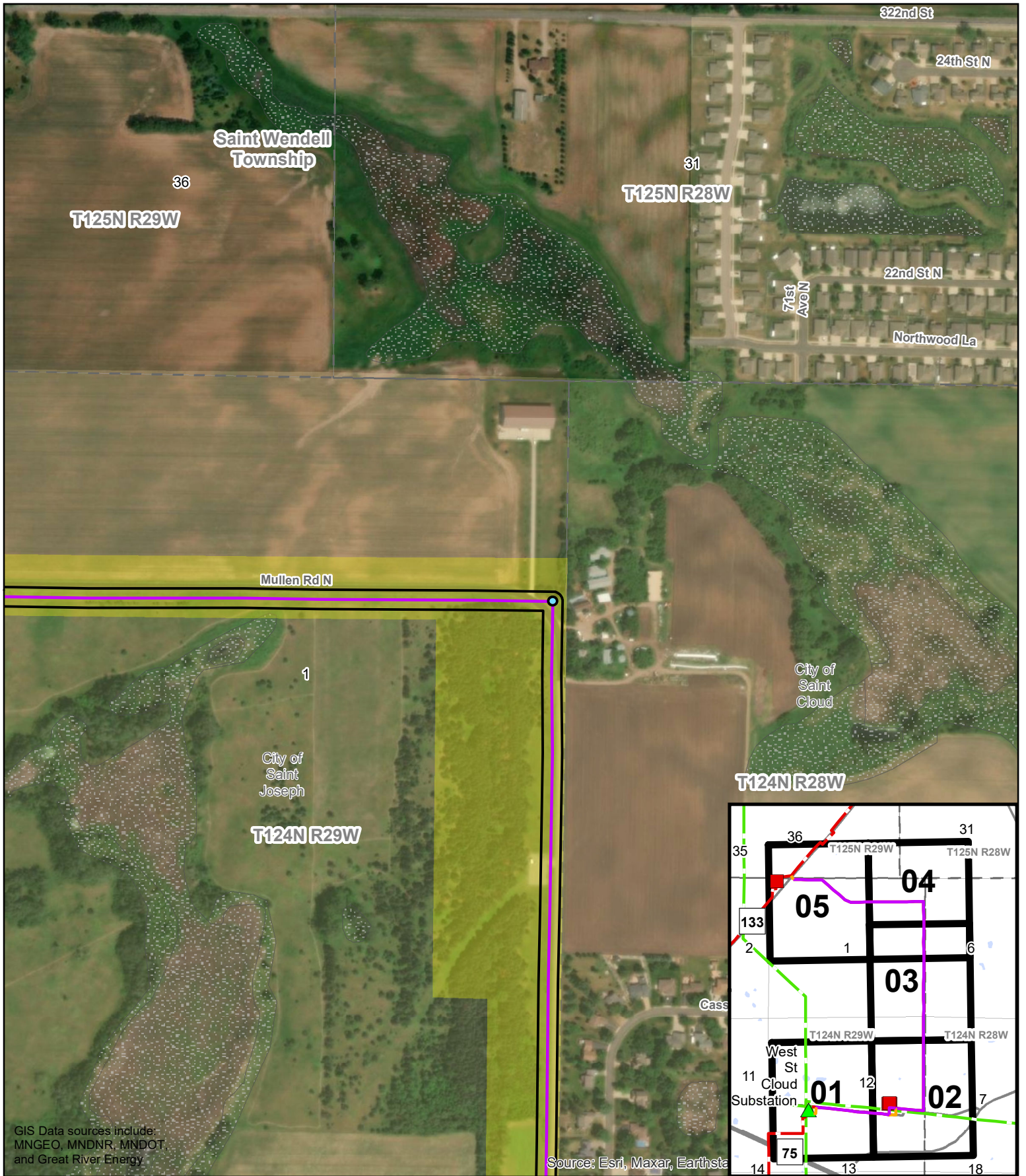
**NWI Wetlands**

Wetlands

**ST-WW 69-kV to 115-kV Conversion**

Page 3 of 5









GIS Data sources include: MNGEO, MNDNR, MNDOT, and Great River Energy

Source: Esri, Maxar, Earthstar

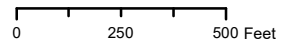
**Great River Energy**

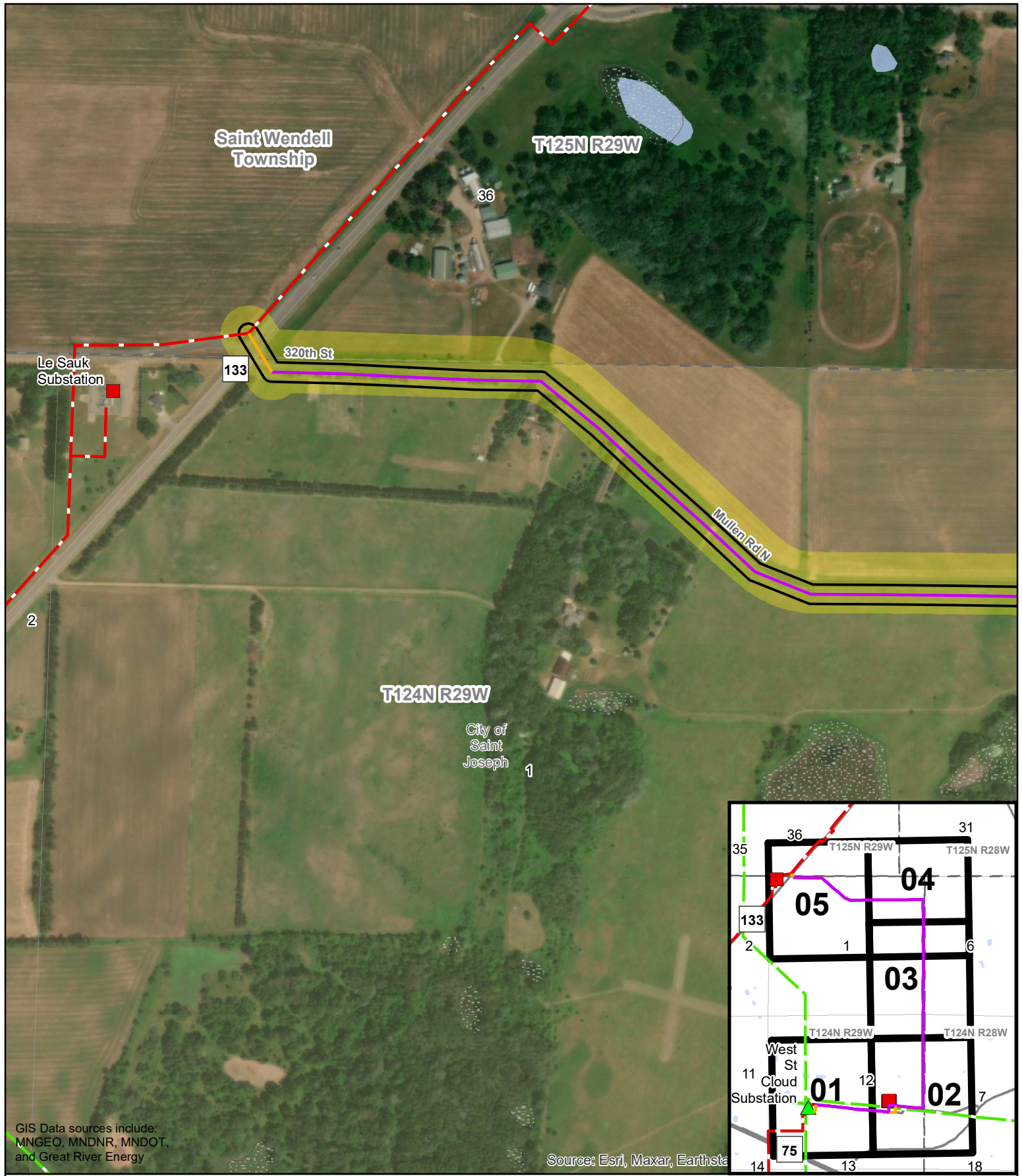
-  Proposed 115-kV transmission line replacing existing 69-kV transmission line
-  Potential deadend structure
-  Project route
-  Proposed right-of-way

**NWI Wetlands**

-  Wetlands

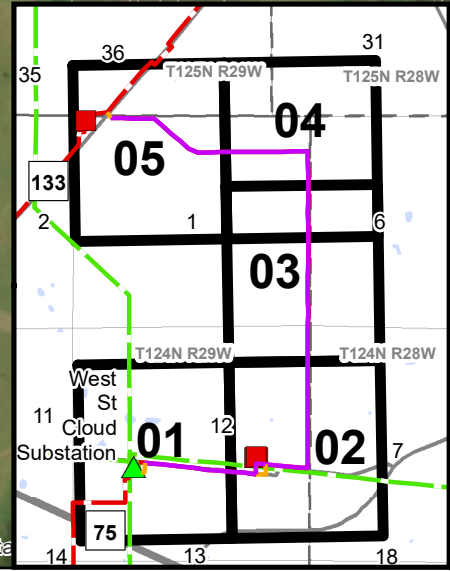
**ST-WW 69-kV to 115-kV Conversion**  
Page 4 of 5





GIS Data sources include:  
 MNGEO, MNDNR, MNDOT,  
 and Great River Energy

Source: Esri, Maxar, Earthstar



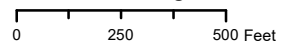
**Great River Energy**

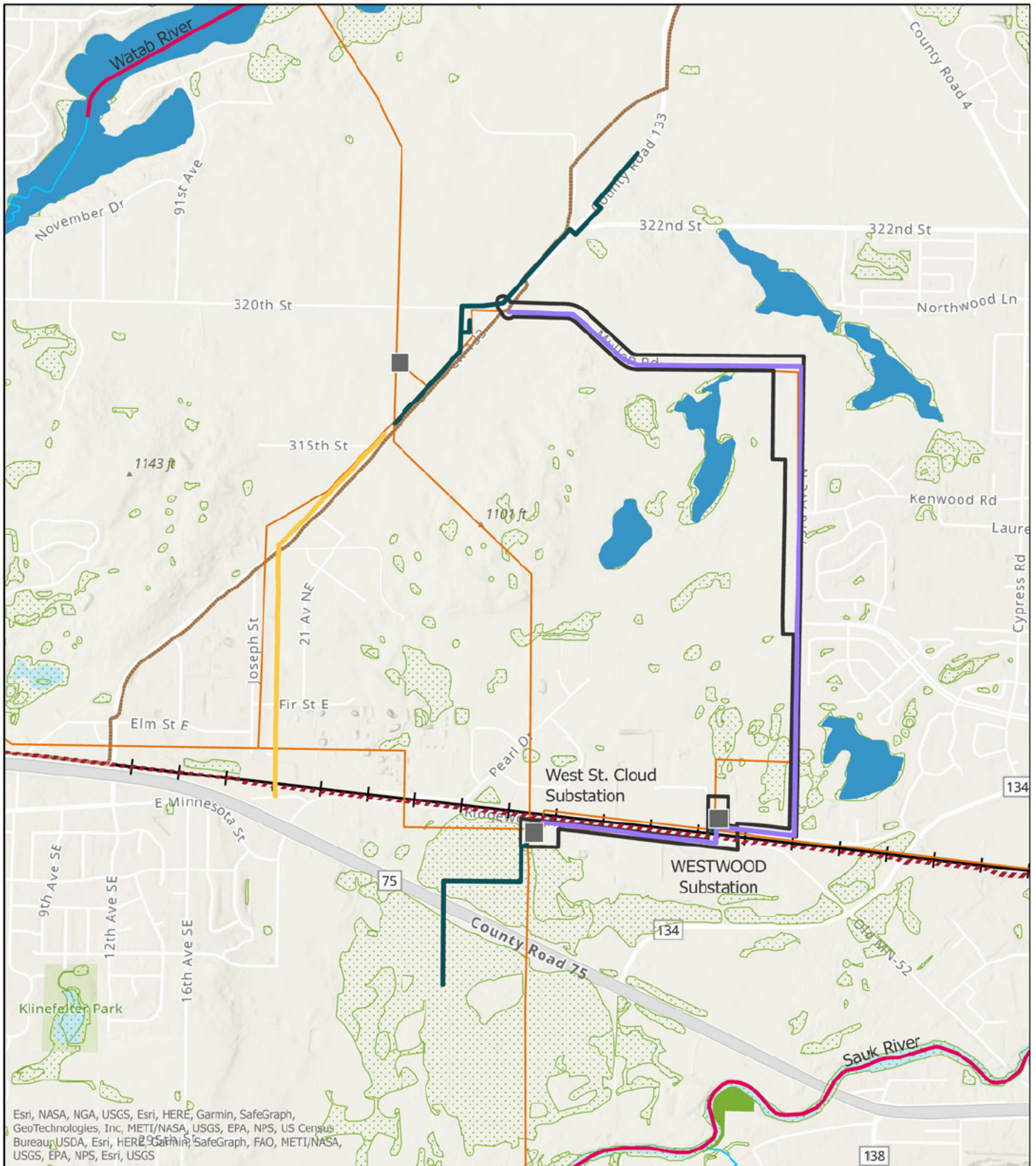
- Proposed 115-kV transmission line replacing existing 69-kV transmission line
- Proposed 115-kV transmission line
- Existing 115-kV transmission line
- Existing distribution substation
- Project route
- Proposed right-of-way

**Non-GRE Transmission**

- Existing 115-kV transmission line
- NWI Wetlands**
- Wetlands

**ST-WW 69-kV to  
 115-kV Conversion**  
 Page 5 of 5





Esri, NASA, NGA, USGS, Esri, HERE, Garmin, SafeGraph, GeoTechnologies, Inc, METI/NASA, USGS, EPA, NPS, US Census Bureau, USDA, Esri, HERE, Garmin, SafeGraph, FAO, METI/NASA, USGS, EPA, NPS, Esri, USGS



### Natural Resources and Recreation Map

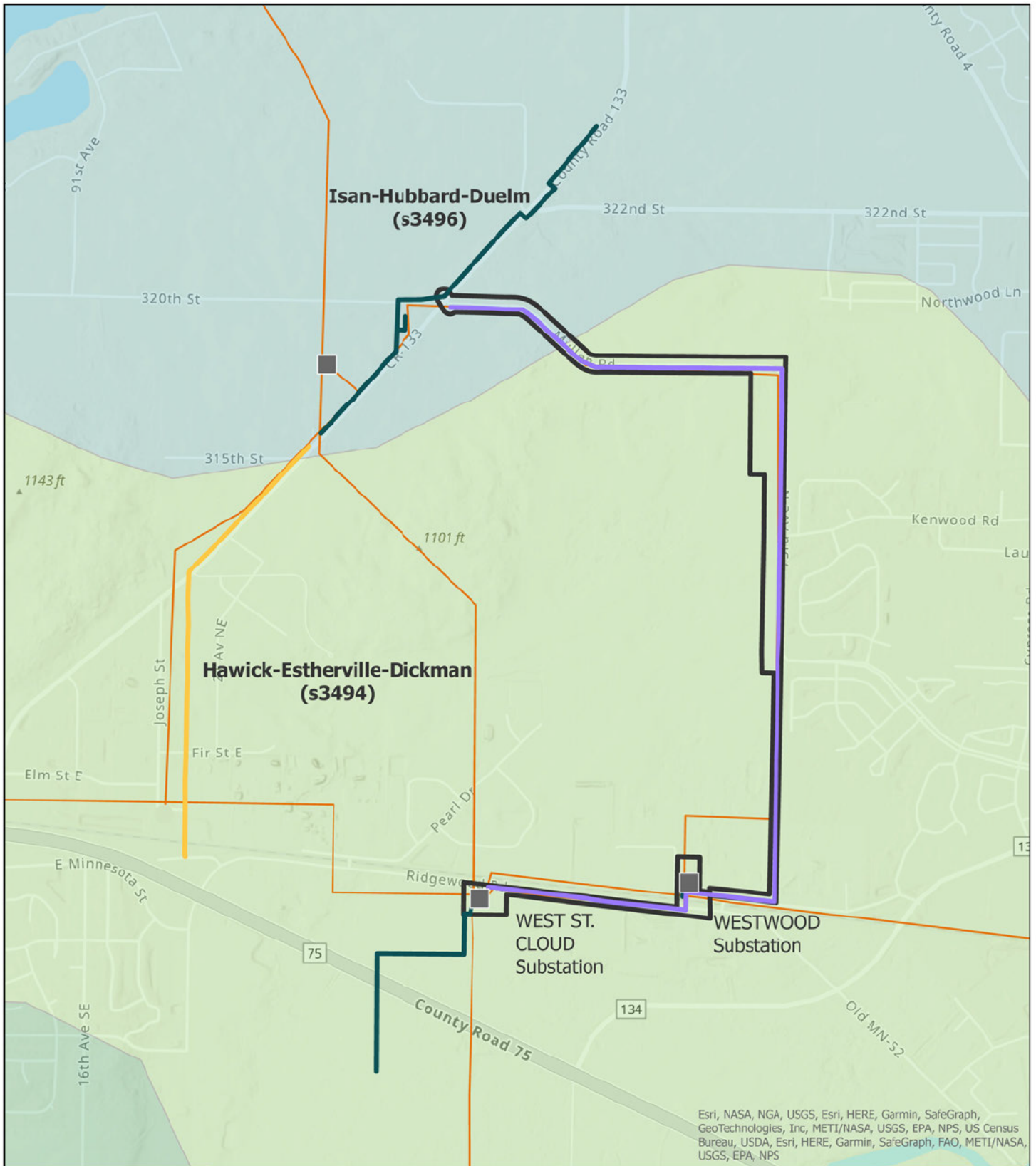
- |   |                             |                     |
|---|-----------------------------|---------------------|
| Substations                                 | Route Width                 | Public Water Basins |
| De-energized 69kV (considered and rejected) | Existing Transmission Lines | Wetlands            |
| Existing 115 kV                             | Rail Lines                  | Lake Wobegon Trail  |
| Project (replacing 69 kV)                   | Snowmobile Trail            | Miller Landing      |
|   | Impaired Waters             |                     |
|   | Public Watercourses         |                     |

North arrow pointing up with 'N' below it.

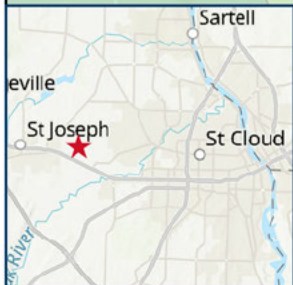
Miles scale: 0, 0.25, 0.5

**mi** COMMERCE DEPARTMENT





Esri, NASA, NGA, USGS, Esri, HERE, Garmin, SafeGraph, GeoTechnologies, Inc, METI/NASA, USGS, EPA, NPS, US Census Bureau, USDA, Esri, HERE, Garmin, SafeGraph, FAO, METI/NASA, USGS, EPA, NPS



### Soils Map

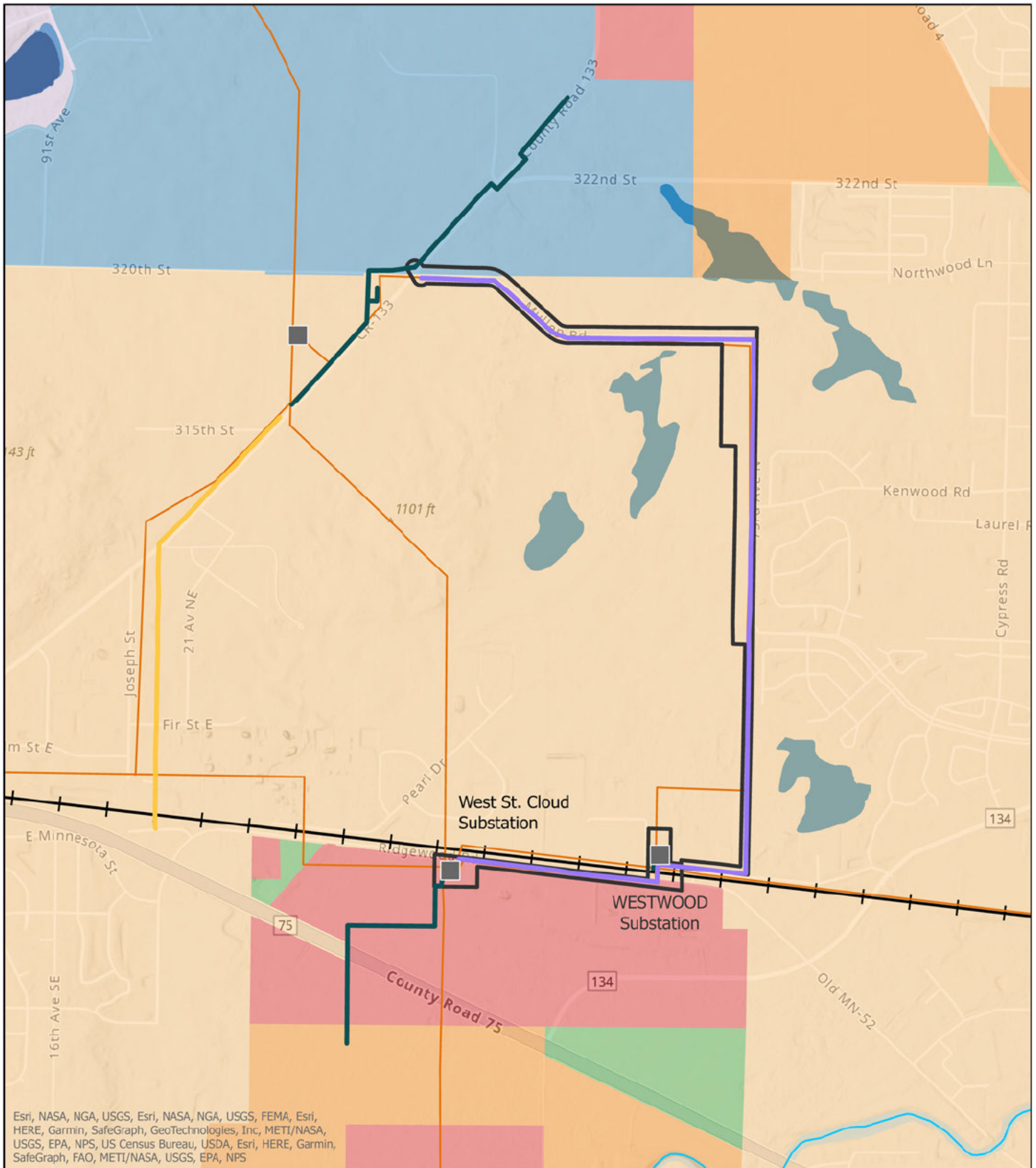
<p><b>Project Line</b></p> <ul style="list-style-type: none"> <li><span style="color: yellow;">—</span> De-energized 69kV (considered and rejected)</li> <li><span style="color: darkgreen;">—</span> Existing 115 kV</li> <li><span style="color: purple;">—</span> Project (replacing 69 kV)</li> </ul>	<ul style="list-style-type: none"> <li><span style="display: inline-block; width: 10px; height: 10px; background-color: grey; border: 1px solid black;"></span> Substations</li> <li><span style="display: inline-block; width: 10px; height: 10px; border: 2px solid black;"></span> Route Width</li> <li><span style="color: orange;">—</span> Existing Transmission Lines</li> </ul> <p><b>Soil Associations</b></p> <ul style="list-style-type: none"> <li><span style="display: inline-block; width: 10px; height: 10px; background-color: lightgreen;"></span> Hawick-Estherville-Dickman (s3494)</li> </ul>	<ul style="list-style-type: none"> <li><span style="display: inline-block; width: 10px; height: 10px; background-color: lightblue;"></span> Isan-Hubbard-Duelm (s3496)</li> <li><span style="display: inline-block; width: 10px; height: 10px; background-color: lightgreen;"></span> Mahtomedi-DeMontreville-Cushing (s3473)</li> </ul>
---	--	--

N

Miles

0 0.1 0.2 0.3 0.4

**COMMERCE DEPARTMENT**



Esri, NASA, NGA, USGS, Esri, NASA, NGA, USGS, FEMA, Esri, HERE, Garmin, SafeGraph, GeoTechnologies, Inc, METI/NASA, USGS, EPA, NPS, US Census Bureau, USDA, Esri, HERE, Garmin, SafeGraph, FAO, METI/NASA, USGS, EPA, NPS



### Zoning Map

<p><b>Project Line</b></p> <ul style="list-style-type: none"> <li><span style="color: yellow;">—</span> De-energized 69kV (considered and rejected)</li> <li><span style="color: darkgreen;">—</span> Existing 115 kV</li> <li><span style="color: purple;">—</span> Project (replacing 69 kV)</li> <li><span style="display: inline-block; width: 10px; height: 10px; background-color: gray; border: 1px solid black;"></span> Substations</li> <li><span style="display: inline-block; width: 10px; height: 10px; border: 2px solid black;"></span> Route Width</li> </ul>	<ul style="list-style-type: none"> <li><span style="color: black;">—</span> Rail Lines</li> <li><span style="color: lightblue;">—</span> Public Watercourses</li> <li><span style="color: blue;">—</span> Public Water Basins</li> </ul> <p><b>Zoning</b></p> <ul style="list-style-type: none"> <li><span style="color: lightblue;">■</span> Agricultural District A-40</li> <li><span style="color: green;">■</span> Commercial (C)</li> <li><span style="color: red;">■</span> Industrial (I)</li> <li><span style="color: orange;">■</span> Municipality</li> </ul>	<ul style="list-style-type: none"> <li><span style="color: lightpurple;">■</span> Protected Lake</li> <li><span style="color: lightpurple;">■</span> Residential District R-1</li> <li><span style="color: lightorange;">■</span> Urban Expansion (UE)</li> <li><span style="color: orange;">—</span> Existing Transmission Lines</li> </ul>
---	---	--

N

Miles

0      0.25

**mn** COMMERCE DEPARTMENT